



SOUTH CAROLINA

2009 WOMEN'S SOCCER

Contact: Miquel Jacobs • **Office:** (803) 777-1516 • **Cell:** (803) 530-5727 • **Fax:** (803) 777-2967
Email: jacobsm2@mailbox.sc.edu • Roost Building B, 1322 Heyward Street, Columbia, SC 29208
www.GamecocksOnline.com

2009 Schedule/Results

DAY	DATE	OPPONENT	TIME/RESULT
Fri.	Aug. 21	Mexican National Team	W, 2-0
Thur.	Aug. 27	College of Charleston	W, 2-0
Sun.	Aug. 30	Western Carolina	W, 2-0
Fri.	Sept. 4	Louisville (1)	W, 3-0
Sun.	Sept. 6	Cincinnati (1)	W, 4-0
Fri.	Sept. 11	Clemson (2)	W, 5-0
Sun.	Sept. 13	UNC Wilmington	W, 2-0
Fri.	Sept. 18	#17 UCF	W, 1-0
Sun.	Sept. 20	South Alabama	W, 6-1
Fri.	Sept. 25	Vanderbilt*	W, 2-1
Sun.	Sept. 27	Kentucky*	W, 1-0
Fri.	Oct. 2	Mississippi*	W, 1-0
Sun.	Oct. 4	Mississippi State*	T, 1-1 (2OT)
Fri.	Oct. 9	Auburn*	W, 1-0 (OT)
Sun.	Oct. 11	Alabama*	W, 2-0
Fri.	Oct. 16	#23 Georgia*	L, 1-2
Sun.	Oct. 18	Tennessee*	W, 2-1
Thur.	Oct. 22	Arkansas*	7 p.m.
Sun.	Oct. 25	#17 LSU* (ESPN)	3 p.m.
Fri.	Oct. 30	Florida*	6 p.m.
Wed.	Nov. 4	(3) SEC Championships	TBA
Fri.	Nov. 6	(3) SEC Championships	TBA
Sun.	Nov. 8	(3) SEC Championships	TBA

All Times Eastern
 Home matches in **BOLD** *SEC Match
 1-Louisville Tournament, Louisville, Ky.
 2-Carolina Cup, Clemson, S.C.
 3-Orange Beach, Ala.

#10 Gamecocks Host Arkansas In Home Finale



Stone Stadium
 Columbia, S.C.



Oct. 22, 2009 • 7 p.m.

#10 South Carolina
 (14-1-1, 6-1-1 SEC)

Arkansas
 (8-4-4, 2-4-2 SEC)

No. 10 South Carolina returns to Stone Stadium for the 2009 home finale when the team hosts Arkansas at Stone Stadium. The game is scheduled to kickoff at 7 p.m. as the Gamecocks look to remain at the top of the SEC Standings with three regular season games remaining.

South Carolina (14-1-1, 6-1-1 SEC) won the last two meetings against the Razorbacks (8-4-4, 2-4-2 SEC) and leads the all-time series with a 6-3-1 advantage. The Gamecocks are one of six teams that have already secured a spot for the SEC Tournament, and Arkansas will look to hold on as the team currently the last team slotted for the tournament with their eighth place position.

The Gamecocks will next travel to Baton Rouge, La., to take on #17 LSU in a 3 p.m. Sunday match that will be nationally televised by ESPN. South Carolina and LSU have identical 6-1-1 records in conference play and are tied for first in the SEC Standings. The Tigers play at #12 Florida Thursday.

Game 17

South Carolina Probable Starters

#	Name	Pos.	Class	GP-GS	G	A	P	Shots	Notes
21	Brittany Rhoades	D	Jr.	16-15	0	0	0	4	2007 Freshman All-American returns at left back
7	Blakely Mattern	D	Sr.	16-16	6	1	13	13	Lowe's Senior CLASS Award finalist with another strong season
20	Ellen Fahey	D	So.	16-16	0	4	4	3	Talented center back having great sophomore season
3	Samantha Diaz-Matosas	D	Sr.	16-16	3	4	10	19	Athletic player can play up top or back
16	Lindsay Small	M	Sr.	16-16	4	2	10	24	Solid midfielder is a mainstay as a defensive mid
5	Kim Miller	M	Sr.	16-16	2	8	12	21	Team engine also has four GW assists this season
12	Shannon Bigbie	M	Sr.	14-12	1	1	3	8	Solid senior plays up top and on the backline
15	Kortney Rhoades	M	So.	16-15	1	2	4	17	Transfer hit first goal as a Gamecock against Vanderbilt
4	Kayla Grimsley	F	So.	16-16	9	4	22	31	Has scored (goal and/or assist) in 12 of 16 games this season
27	Brooke Jacobs	F	Jr.	16-15	3	2	8	34	Career SOG% leader has been converting goals this year

No.	Name	Pos.	Yr.	Min.	GA	GAA.	Svs.	W-L	SO	Notes
29	Mollie Patton	GK	R-Jr.	1437:19	5	0.31	53	14-1-1	11	NCAA's Top 3 with 11 shutouts, 0.31 GAA and .911 save %



2009 NUMERICAL ROSTER

No.	Name	Pos.	Ht.	Cl/Exp.	Hometown (High School)
0	Alex Holland	GK	5-7	Fr./HS	Cary, Ill. (Cary-Grove)
1	Roya Mojarab	GK	5-4	Soph./1L	Tacoma, Wash. (Curtis)
2	Megan Fligg	D/F	5-6	Fr./HS	Gainesville, Ga. (Chestatee)
3	Samantha Diaz-Matosas	D	5-7	Sr./3L	Lilburn, Ga. (Brookwood)
4	Kayla Grimsley	M/F	5-4	Soph./1L	Lakeland, Fla. (George W. Jenkins)
5	Kim Miller	M	5-2	Sr./3L	Farmingdale, N.Y. (Famingdale)
7	Blakely Mattern	D	5-9	Sr./3L	Simpsonville, S.C. (JL Mann)
8	Christine Watts	M	5-6	Fr./HS	Duluth, Ga. (Peachtree Ridge)
9	Maria Petroni	F	5-10	Soph./1L	Flowery Branch, Ga. (Buford)
10	Natalie Aaron	F	5-5	Soph./1L	Brentwood, Tenn. (Battle Ground Academy)
11	Idana DeCecco	D	5-6	Soph./1L	Sherwood Park, Alberta (Archbishop Jordan)
12	Shannon Bigbie	F/M	5-6	Sr./3L	Lexington, S.C. (Lexington)
13	Jocelyn Spurrier	D	5-8	R-Fr./HS	Lawrenceville, Ga. (Brookwood)
14	Lolly Holland	M	5-4	Soph./1L	Suwanee, Ga. (South Forsyth)
15	Kortney Rhoades	M	5-4	Soph.TR	Wilmington, Del. (Padua // St. Joseph's)
16	Lindsay Small	M/D	5-7	Sr./3L	Suffield, Conn. (Suffield)
17	Maggie Blackwell	D	5-6	R-Soph./SQ	Marietta, S.C. (Travelers Rest)
18	Ali Glemser	D	5-3	R-Fr./HS	Collierville, Tenn. (Collierville)
19	Kira Campbell	M	5-8	Soph./1L	Lexington, S.C. (Lexington)
20	Ellen Fahey	D	5-7	Soph./1L	Fort Wright, Ky. (Notre Dame Academy)
21	Brittany Rhoades	D	5-3	Jr./2L	Wilmington, Del. (Padua)
22	Dani Henry	F/D	5-4	R-Fr./HS	Avondole, Pa. (Padua)
23	Kacie Brewer	F/D	5-5	Sr./3L	Merritt Island, Fla. (Merritt Island)
25	Maddy Kill	M	5-7	Jr./TR	Marietta, Ga. (Marist School // Seton Hall)
26	Rae Wilson	F	5-5	Fr./HS	Greenville, S.C. (JL Mann)
27	Brooke Jacobs	F	5-3	Jr./2L	Chambersburg, Pa. (Chambersburg Area)
28	Brittany DeWitt	D	5-6	Fr./HS	Greensboro, N.C. (N.C. School of Science & Math)
29	Mollie Patton	GK	5-7	R-Jr./1L	Milford, Ohio (Milford)
32	Aly Shattls	M	5-1	Sr./3L	Huntington, W.Va. (Huntington)
35	Darien Vercillo	GK	5-6	Fr./HS	Yorba Linda, Calif. (Mater Dei)

2009 ALPHABETICAL ROSTER

No.	Name	Pos.	Ht.	Cl/Exp.	Hometown (High School)
10	Natalie Aaron	F	5-5	Soph./1L	Brentwood, Tenn. (Battle Ground Academy)
12	Shannon Bigbie	F/M	5-6	Sr./3L	Lexington, S.C. (Lexington)
17	Maggie Blackwell	D	5-6	R-Soph./SQ	Marietta, S.C. (Travelers Rest)
23	Kacie Brewer	F/D	5-5	Sr./3L	Merritt Island, Fla. (Merritt Island)
19	Kira Campbell	M	5-8	Soph./1L	Lexington, S.C. (Lexington)
11	Idana DeCecco	D	5-6	Soph./1L	Sherwood Park, Alberta (Archbishop Jordan)
28	Brittany DeWitt	D	5-6	Fr./HS	Greensboro, N.C. (N.C. School of Science & Math)
3	Samantha Diaz-Matosas	D	5-7	Sr./3L	Lilburn, Ga. (Brookwood)
20	Ellen Fahey	D	5-7	Soph./1L	Fort Wright, Ky. (Notre Dame Academy)
2	Megan Fligg	D/F	5-6	Fr./HS	Gainesville, Ga. (Chestatee)
18	Ali Glemser	D	5-3	R-Fr./HS	Collierville, Tenn. (Collierville)
4	Kayla Grimsley	M/F	5-4	Soph./1L	Lakeland, Fla. (George W. Jenkins)
22	Dani Henry	F/D	5-4	R-Fr./HS	Avondole, Pa. (Padua)
0	Alex Holland	GK	5-7	Fr./HS	Cary, Ill. (Cary-Grove)
14	Lolly Holland	M	5-4	Soph./1L	Suwanee, Ga. (South Forsyth)
27	Brooke Jacobs	F	5-3	Jr./2L	Chambersburg, Pa. (Chambersburg Area)
25	Maddy Kill	M	5-7	Jr./TR	Marietta, Ga. (Marist School // Seton Hall)
7	Blakely Mattern	D	5-9	Sr./3L	Simpsonville, S.C. (JL Mann)
5	Kim Miller	M	5-2	Sr./3L	Farmingdale, N.Y. (Famingdale)
1	Roya Mojarab	GK	5-4	Soph./1L	Tacoma, Wash. (Curtis)
29	Mollie Patton	GK	5-7	R-Jr./1L	Milford, Ohio (Milford)
9	Maria Petroni	F	5-10	Soph./1L	Flowery Branch, Ga. (Buford)
21	Brittany Rhoades	D	5-3	Jr./2L	Wilmington, Del. (Padua)
15	Kortney Rhoades	M	5-4	Soph.TR	Wilmington, Del. (Padua // St. Joseph's)
32	Aly Shattls	M	5-1	Sr./3L	Huntington, W.Va. (Huntington)
16	Lindsay Small	M/D	5-7	Sr./3L	Suffield, Conn. (Suffield)
13	Jocelyn Spurrier	D	5-8	R-Fr./HS	Lawrenceville, Ga. (Brookwood)
35	Darien Vercillo	GK	5-6	Fr./HS	Yorba Linda, Calif. (Mater Dei)
8	Christine Watts	M	5-6	Fr./HS	Duluth, Ga. (Peachtree Ridge)
26	Rae Wilson	F	5-5	Fr./HS	Greenville, S.C. (JL Mann)

PRONUNCIATIONS

Kira Campbell -- KEER-uh
Idana DeCecco -- id-DAN-uh de-CHECK-oh
 Sam **Diaz-Matosas** -- DIAZ mah-TOE-sas
 Ellen **Fahey** -- FAYE-he
Roya Mojarab -- ROY-ah mo-JAR-uhb
 Darien **Vercillo** -- ver-SILL-oh

**SOUTH CAROLINA
 2009 SEC RANKINGS
 (as of 10/21/09)**

Category	Pl.	No.
Goals	T-2nd	36
Goals Per Game	3rd	2.25
Goals Allowed	1st	6
GAA	1st	0.37
Assists	T-1st	32
Assists Per Game	T-1st	2.00
Points	2nd	104
Points Per Game	3rd	6.50
Shots	9th	237
Shots Per Game	9th	14.81
Shot %	2nd	.152
Shot on Goal %	1st	.523
Saves	12th	53
Saves Per Game	12th	3.31
Shutouts	1st	11
Shots Allowed	1st	127
SOG Allowed	1st	59
Points Allowed	1st	15
Fouls	10th	143
Corners	T-8th	77
Offsides	T-3rd	36
Yellow Cards	T-8th	6

INDIVIDUAL

Name	Category	Pl.	No.
Diaz-Matosas	Assists	T-10th	4
Fahey	Assists	T-10th	4
Grimsley	Goals	2nd	9
	Assists	T-10th	4
	Points	3rd	22
	Points/gm	3rd	1.38
Mattern	Goals	T-9th	6
	GWG	T-5th	3
Miller	Assists	T-1st	8
Small	GWG	T-5th	3
Patton	GAA	1st	0.31
	Save %	1st	.911
	Shutouts	1st	11
	Saves	12th	53



SEC STANDINGS

EASTERN DIVISION			CONF		ALL	
Team	W-L	Pts	W-L	Pct.		
South Carolina	6-1-1	19	14-1-1	.906		
Florida	5-1-2	17	11-4-2	.706		
Georgia	5-3-0	15	12-3-1	.781		
Tennessee	3-3-2	11	7-6-3	.531		
Kentucky	2-5-1	7	5-7-4	.438		
Vanderbilt	2-6-0	6	8-7-1	.531		

WESTERN DIVISION			CONF		ALL	
Team	W-L	Pts	W-L	Pct.		
LSU	6-1-1	19	10-3-3	.719		
Ole Miss	4-1-2	14	10-3-2	.733		
Auburn	3-5-0	9	6-7-3	.469		
Arkansas	2-4-2	8	8-4-4	.625		
Alabama	2-4-1	7	6-7-1	.464		
Mississippi State	0-6-2	2	8-6-2	.562		

Games through October 21

THIS WEEK IN THE SEC

Thursday, October 22

Alabama at Georgia	7 p.m.
Arkansas at South Carolina	7 p.m.
Auburn at Tennessee	7 p.m.
LSU at Florida	7 p.m.
Ole Miss at Kentucky	7 p.m.
Mississippi State at Vanderbilt	8 p.m.

Sunday, October 25

Florida at Arkansas	1 p.m.
Tennessee at Alabama	2 p.m.
Georgia at Auburn	2 p.m.
Kentucky at Mississippi State	2 p.m.
South Carolina at LSU	3 p.m.
Vanderbilt at Ole Miss	3 p.m.

All Times Eastern

SEC PRESEASON POLL

EASTERN DIVISION		WESTERN DIVISION	
Florida (11).....	66	LSU (8).....	63
Georgia (1).....	53	Auburn (4).....	58
Tennessee	43	Ole Miss.....	43
South Carolina	40	Alabama	39
Vanderbilt	25	Arkansas.....	25
Kentucky	19	Mississippi State	18

Overall Champion: Florida (11), Auburn (1)

2009 Road To Orange Beach

TEAM	REC	PTS	GD	GS
1. LSU*	6-1-1	19	+19	22
2. South Carolina*	6-1-1	19	+5	11
3. Florida*	5-1-2	17	+11	19
4. Georgia*	5-3-0	15	-	10
5. Ole Miss*	4-1-2	14	+3	9
6. Tennessee*	3-3-2	11	-1	10
7. Auburn	3-5-0	9	-1	13
8. Arkansas	2-4-2	8	-2	4

9. Alabama	2-4-1	7	-5	3
10. Kentucky	2-5-1	7	-4	4
11. Vanderbilt	2-6-0	6	-12	5
12. Mississippi State	0-6-2	2	-14	4

ON THE HORIZON

The Gamecocks hit the road Sunday for a nationally televised match at #17 LSU. The game will be broadcast at 3 p.m. by ESPNU from the LSU Soccer Complex. South Carolina and LSU are the only teams remaining in the conference that control their own destiny in the race to the SEC Championship.

SCOUTING ARKANSAS

Arkansas is currently eighth in the SEC under first year coach Erin Aubry. The team is led by junior goalkeeper Britni Williams who has a 0.55 goals against average to go along with 80 saves and nine shutouts, numbers that all rank in the top three in the SEC. Offensively, freshman Allie Chandler leads the team with five goals and two assists for 12 points, and junior Ally Atkins is right behind with three goals and four assists for 10 points.

IN THE POLLS

For the fourth consecutive week, South Carolina has earned a top 10 ranking from all three major publications as Coach Shelley Smith's team comes in at No. 10 by the NSCAA and Soccer America in addition to a No. 9 ranking by Soccer Times. The Gamecocks also come in at No. 12 in the second NCAA RPI report released this week.

LOWE'S SENIOR CLASS AWARD FINALIST BLAKELY MATTERN NEEDS VOTES!

Senior defender **Blakely Mattern** has been named a finalist for the Lowe's Senior CLASS Award, presented annually in eight NCAA Division 1 Sports to a senior student-athlete who excels both on and off the field. Candidates are chosen based on their dedication and achievement in four areas: Classroom, Character, Community and Competition. Fan voting will help decide the winner. Visit "www.seniorclassaward.com" or text "W6" to 74567 to vote for Mattern.

SENIOR CLASS SET THE BAR HIGH

The 2009 senior class will leave Columbia as the winningest senior class in program history. Entering weekend play, the group of seniors hold a 50-20-13 (.681) record, the most wins and best win-percentage for a South Carolina senior class. The group of seven has led Carolina to three consecutive SEC tournament appearances and two consecutive NCAA appearances.

SHUTOUT DEFENSE

South Carolina is currently second in the nation with 11 shutouts on the year and have allowed only six goals through the first 16 games of the season. Junior goalkeeper **Mollie Patton** has held the national lead in all three goalkeeping categories for the majority of the season. This week she clocks in tied for the national lead with 11 solo shutouts, ranks third nationally with a 0.31 goals against average and is fifth nationally with a .911 save percentage.

GRABBING THE SCHOOL RECORD

Senior defender **Blakely Mattern** has started every game of her career, and with 83 career starts is officially the school's all-time leader after surpassing Ashley Kirk's record of 81 starts in last Friday's match at Georgia. She, along with **Samantha Diaz-Matosas** and **Kim Miller**, will surpass the games played record of 83 in Thursday match against Arkansas.

SOUTH CAROLINA VS. RANKED TEAMS

Date	Opponent	Result	Date	Opponent	Result
9-18-96	#9 Clemson	W, 3-2	10-3-04	#19 Tennessee	L, 1-3
10-4-97	at #9 Clemson	L, 0-5	10-29-04	#18 Florida	L, 1-2 (2OT)
10-26-97	at #9 Florida	L, 2-5	10-2-05	at #20 Tennessee	L, 1-2
9-11-98	at #17 Georgia	W, 2-0	10-7-05	#18 Vanderbilt	L, 0-2
10-7-98	#13 Clemson	L, 1-3	10-29-05	at #16 Florida	L, 0-3
11-5-98	vs. #3 Florida	L, 0-6	8-25-06	vs. #13 Illinois	L, 0-1
10-8-99	at #9 Clemson	L, 0-4	9-24-06	at #13 Auburn	W, 1-0
10-29-99	at #3 Florida	L, 0-5	9-29-06	#16 Tennessee	T, 0-0 (2OT)
9-8-00	at #1 UNC	L, 1-9	10-27-06	#13 Florida	T, 1-1 (2OT)
9-12-00	vs. #17 Duke	L, 1-5	9-1-07	at #1 North Carolina	W, 1-0
10-8-00	at #14 Kentucky	L, 1-5	9-22-07	at #20 Clemson	L, 0-1
10-29-00	#16 Florida	L, 0-3	9-27-07	at #10 Tennessee	L, 2-3 (OT)
9-30-01	at #20 Florida	L, 0-1	10-21-07	#25 Auburn	W, 2-0
10-2-01	at #9 Clemson	L, 0-3	10-25-07	at #20 LSU	T, 1-1 (2OT)
10-5-01	#16 Kentucky	L, 0-1	11-2-07	at #22 Florida	L, 0-2
10-21-01	at #25 Tennessee	L, 1-3	11-7-07	vs. #15 Tennessee	W, 2-0
9-11-02	#18 Clemson	L, 0-1	11-9-07	vs. #13 Georgia	L, 0-2
10-20-02	#13 Tennessee	T, 1-1 (2OT)	9-14-08	vs. #7 Florida State	T, 3-3 (2OT)
8-29-03	at #20 Clemson	L, 0-1 (OT)	10-23-08	#13 LSU	T, 0-0 (2OT)
9-12-03	at #5 Texas A&M	L, 1-2 (OT)	10-30-08	#7 Florida	L, 0-1
10-3-03	#14 Auburn	T, 0-0 (2OT)	9-18-09	#17 UCF	W, 1-0
11-1-03	at #10 Florida	L, 0-2	10-16-09	at #23 Georgia	L, 1-2
11-7-03	vs. #16 Tennessee	L, 0-1			
9-12-04	at #4 Virginia	L, 2-5			
9-15-04	#7 Clemson	W, 2-0			

Overall: 8-32-7 vs. Top 10: 3-12-1
Home: 4-8-5 Road: 3-19-1 Neutral: 1-5-1



CAROLINA'S RECORD WHEN ...

Overall	14-1-1
Home	8-0-0
Away	4-1-1
Neutral	2-0-0
Leading At The Half	10-1-0
Tied At The Half	4-0-1
Trailing At The Half	0-0-0
Scores In The First Half	10-1-0
Overtime Games	1-0-1
On Television	1-0-0
In Tournaments	4-0-0
Against 2008 NCAA Participants	4-1-0
Vs. Top 25	1-1-0
Longest Winning Streak	W11
Longest Unbeaten Streak	U14
Active Streak	W1
Against Opponents	
USC Scores First	14-1-1
Opponent Scores First	0-0-0
Scores 1 Goal	4-1-1
Scores 2 Goals	6-0-0
Scores 3+ Goals	4-0-0
Opponent Scores 1 Goal	3-0-1
Opponent Scores 2 Goals	0-1-0
Opponent Scores 3+ Goals	0-0-0
Is Shutout	0-0-0
Shut Out Opponent	11-0-0
Takes More Shots	13-1-0
Opponent Takes More Shots	2-0-0
Time	
Day Games	7-0-1
Night Games	7-1-0
Mondays	0-0-0
Wednesdays	0-0-0
Thursdays	1-0-0
Fridays	6-1-0
Saturdays	0-0-0
Sundays	7-0-1
August	2-0-0
September	8-0-0
October	4-1-1
November	0-0-0
After A Win	11-1-1
After A Loss	1-0-0
After A Tie	1-0-0
Wearing White	9-1-0
Wearing Garnet	0-0-1
Wearing Black	5-0-0

AT THE TOP OF THE NCAA LISTS

Noted as one of the top defensive teams in the country under **Shelley Smith**, South Carolina has continued that excellence this season and added a little offensive flair as well. The Gamecocks have the NCAA's third-ranked defense with a 0.368 goals against average and 11 shutouts. The team is also No. 26 in scoring offense (2.25 goals/game). With that type of production, South Carolina is also at the top of the SEC lists in half of the statistical categories. The team leads the conference in goals allowed, goals against average, shutouts, shots allowed, shots on goal allowed, points allowed, assists and shot on goal percentage.

MEXICAN FORSHADOW

South Carolina's incredible run this season may have been forshadowed by the preseason ending 2-0 shutout win of the Mexican National Team. Since that match, the Mexican team went 4-0 in its collegiate tour and outscored opponents 14-2 with wins at Kennesaw State (5-0), previously ranked TCU (4-1), #14 Southern California (2-0) and Cal State Fullerton (3-1).

THE BEST SEASON EVER?

With a 14-1-1 record and 6-1-1 SEC record, the Gamecocks have already matched program bests for overall and conference wins in a season with at least four games remaining in 2009. Currently tied for first in the overall SEC standings with LSU, the Gamecocks are in search of the first overall and first East Division titles in program history.

PATTON GETS THE RECORD(S)

Redshirt junior goalkeeper **Mollie Patton** set a new South Carolina single-season shutout record when she grabbed her eighth shutout of the year in the win against Kentucky. She then set the career record in the next game at Ole Miss with her 16th shutout in 33 career games, surpassing the previous mark of 15 set by **Laura Armstrong** and **Elise Matthews**.

SPREADING THE WEALTH

Goals have been spread around the entire Gamecock team so far with a different player hitting the game-winning goal in eight of Carolina's 14 wins. Fourteen different players have scored a goal this season, and only half of those players have scored multiple goals this season: **Kayla Grimsley**, **Kim Miller**, **Blakely Mattern**, **Samantha Diaz-Matosas**, **Lindsay Small**, **Brooke Jacobs** and **Christine Watts**.

MILLER TIME

Senior **Kim Miller** has been one of the most consistent performers for South Carolina the past four years, and the New York native has stretched that consistency to another part of her game in her final season. Miller jumped up to 23th in the NCAA and first in the SEC with eight assists so far this season, and she set the South Carolina single-season record with her fourth assist on a game-winning goal in the Alabama game last Sunday. In a two-game stretch, Miller recorded assists on four consecutive goals for the Gamecocks.

GRIMSLEY'S RECORD PLAY

Sophomore **Kayla Grimsley** has continued the stellar play that she exhibited in her freshman season last year. The flashy player set a new South Carolina record with a nine-match scoring streak, and her goal against South Alabama tied her program record four-match goal scoring streak. She currently is second in the SEC lead in goals (9) and is third in points (22).

GAMECOCKS ON TV

South Carolina will have at least two televised games in the 2009 season. The team defeated Vanderbilt, 2-1, in the SEC opener on Sept. 25. The Gamecocks will also appear on ESPNU with their October 25 match at LSU slated for 3 p.m. The broadcast will mark the third consecutive season that the Gamecocks will play on national television.

MATTERN CONTINUES TO PICK UP NATIONAL HONORS

Senior defender **Blakely Mattern** continues to pick up honors in her final season as a Gamecock. A Lowe's Senior CLASS Award finalist, Mattern has been named the SEC Defensive Player of the Week twice, was selected to the Soccer America National Team of the Week three times, earned Top Drawer Soccer Team of the Week honors once and has also earned CollegeSoccer360.com Primetime Player of the Week honors.

PATTON EARNS NATIONAL HONORS

Redshirt junior goalkeeper **Mollie Patton** earned her first career national honor when she was named to the Soccer America National Team of the Week after her stellar play at the Cardinal Classic. Since then, she has also earned SEC Defensive Player of the Week honors and currently leads the nation in shutouts and goals against average. Patton recently set the SEC record for consecutive shutouts when she notched seven straight, passing the previous record of six held by Kentucky's Carrie Kuhnell (1995) and Auburn's Megan Rivera (2003).



HOME MATCHES UNDER SMITH

DATE	OPPONENT	RESULT
9-4-01	Davidson	W, 4-0
9-17-01	Furman	W, 3-0
9-19-01	SC State	W, 12-0
10-5-01	Kentucky	L, 0-1
10-7-01	Vanderbilt	L, 0-1
10-26-01	Ole Miss	W, 1-0
10-28-01	Mississippi State	L, 1-2 (OT)
11-2-01	UNC Greensboro	W, 2-0
8-30-02	Birmingham Southern	W, 3-0
9-11-02	Clemson	L, 0-1
9-14-02	College of Charleston	W, 3-1
9-29-02	Florida	W, 1-0 (OT)
10-11-02	Arkansas	L, 1-2 (OT)
10-13-02	LSU	W, 2-0
10-18-02	Georgia	L, 1-2 (OT)
10-20-02	Tennessee	T, 1-1 (OT)
10-29-02	Wofford	W, 1-0
9-2-03	Furman	L, 0-1
9-5-03	Charleston Southern	W, 2-1
9-7-03	Darmouth	W, 3-1
9-17-03	Davidson	W, 4-1
9-21-03	NC State	W, 1-0
10-3-03	Auburn	T, 0-0 (OT)
10-5-03	Alabama	W, 2-0
10-17-03	Vanderbilt	L, 0-1
10-19-03	Kentucky	W, 2-1
8-27-04	Georgia State	W, 1-0
9-3-04	Houston	W, 4-1
9-5-04	Iowa State	W, 1-0
9-15-04	Clemson	W, 2-0
9-19-04	Charlotte	W, 2-1 (2 OT)
10-1-04	Georgia	T, 1-1 (OT)
10-3-04	Tennessee	L, 1-3
10-15-04	Ole Miss	L, 0-1
10-17-04	Mississippi State	L, 2-3 (OT)
10-24-04	LSU	W, 2-1
10-29-04	Florida	L, 1-2 (2 OT)
8-26-05	Mercer	W, 7-0
8-29-05	Furman	W, 2-1
9-18-05	Miami (Fla.)	W, 2-1
9-23-05	Auburn	L, 0-1
9-25-05	Alabama	W, 2-0
10-7-05	Vanderbilt	L, 0-2
10-9-05	Kentucky	L, 1-2 (2 OT)
10-21-05	Arkansas	L, 1-2
8-31-06	Francis Marion	W, 2-1
9-3-06	James Madison	W, 3-1
9-5-06	The Citadel	W, 4-0
9-15-06	Clemson	W, 1-0
9-17-06	Jacksonville State	W, 6-0
9-29-06	Tennessee	T, 0-0 (2 OT)
10-1-06	Georgia	W, 2-1
10-13-06	Mississippi State	W, 1-0
10-15-06	Ole Miss	T, 0-0 (2 OT)
10-20-06	LSU	W, 2-1 (2 OT)
10-27-06	Florida	T, 1-1 (2 OT)
9-3-07	East Tennessee State	W, 5-2
9-12-07	Winthrop	W, 5-0
9-23-07	Marshall	W, 4-0
10-5-07	Kentucky	W, 2-0
10-7-07	Vanderbilt	L, 0-1 (2OT)
10-19-07	Alabama	W, 2-0
10-21-07	Auburn	W, 1-0
10-28-07	Arkansas	W, 1-0
8-28-08	East Carolina	W, 1-0
8-31-08	Boston University	W, 1-0
9-5-08	Clemson	W, 1-0
9-7-08	Furman	W, 2-1
9-19-08	East Tennessee State	W, 4-0
9-26-08	Tennessee	W, 2-1
9-28-08	Georgia	T, 1-1
10-10-08	Mississippi State	W, 2-1
10-12-08	Ole Miss	W, 3-2
10-23-08	LSU	T, 0-0
10-30-08	Florida	L, 0-1
8-27-09	College of Charleston	W, 2-0
8-30-09	Western Carolina	W, 2-0
9-18-09	UCF	W, 1-0
9-20-09	South Alabama	W, 6-1
9-25-09	Vanderbilt	W, 2-1
9-27-09	Kentucky	W, 1-0
10-9-09	Auburn	W, 1-0 (OT)
10-11-09	Alabama	W, 2-0

TOTAL RECORD: 57-18-8
LONGEST UNBEATEN STREAK: 15
SHUTOUTS RECORDED 41

ELLEN FAHEY'S STEPPING UP

Sophomore defender **Ellen Fahey** started every game at centerback last season as a freshman, continuing the legacy of all-conference caliber freshman defenders after **Blakely Mattern** (2006) and **Brittany Rhoades** (2007). Strong and assertive in the back, Fahey added a new dimension to her play thus far after recording her first four career points, three on game-winning assists. Her three game-winning assists tie the South Carolina sophomore single season record.

HELMET! HELMET! HELMET!

Junior goalkeeper **Mollie Patton** has learned to embrace the helmet she has had to wear the past two seasons due to previous concussions. This year she has company now that **Lindsay Small** and **Brittany Rhoades** have been confined to wearing headgear due to blows to the head recently. Rhoades began wearing headgear after a blow in the Clemson victory led to her getting stitches on her left brow. Small then had to get headgear after taking an inadvertent elbow in the Vanderbilt victory, causing her to get stitches below her right brow.

HOME AT THE STONE

South Carolina has been nearly unstoppable at Stone Stadium the past three seasons, posting a 31-2-5 record at home since 2006. The streak included a 15-game unbeaten streak from Aug. 31, 2006-Oct. 5, 2007 and a 13-game unbeaten streak at "The Graveyard" from Oct. 19, 2007-Oct. 23, 2008. The lone blemishes on the record are a double-overtime loss to Vanderbilt (Oct. 7, 2007) and a loss to #7 Florida (Oct. 30, 2008). The season opening win against College of Charleston was **Coach Shelley Smith's** 50th win at Stone Stadium.

ROCKY TOPPED

South Carolina's 2-1 win at Tennessee last weekend marked the first win in program history in Knoxville. In addition, the victory extended Carolina's current streak in the series. After going winless in the first 13 matches between the SEC East rivals, South Carolina has now won the last three meetings - one at home, one at the SEC tournament and one in Knoxville.

PADUA PALS

Three players on the South Carolina roster played high school soccer at Padua Academy in Wilmington, Del., and a fourth played club soccer with them for the FC Pennsylvania Strikers. **Dani Henry** along with sisters **Brittany Rhoades** and **Kortney Rhoades** each went to Padua and have seen themselves earn regular playing time - the sisters start and Henry is a regular of the bench. In addition, they struck a strong friendship with **Brooke Jacobs** who played with the elder Rhoades and Henry for the FC Penn Strikers club team. Jacobs is a two-year starter at forward.

MATTERN'S CAREER WEEKEND

Senior **Blakely Mattern** had a career weekend at the Carolina's Cup when she scored three goals in two games for six points to earn the Carolina's Cup MVP honor. The senior defender also led the Gamecocks to their sixth shutout - tied for the NCAA lead - in the 5-0 win at Clemson and 2-0 win against UNC Wilmington. For her efforts, she was named the SEC Defensive Player of the Week for the second time in three weeks and also earned a spot on the Soccer America and Top Drawer Soccer National Teams of the Week.

DIAZ-MATOSAS DELIVERS

Senior defender **Samantha Diaz-Matosas** has started off strong for South Carolina with a four-point weekend at the Cardinal Classic. Diaz-Matosas earned an assist in the final seconds of the match against Louisville before scoring her first goal of the season and getting the game-winning assist in the 4-0 win against Cincinnati. On Senior Night, she hit the game-winner in overtime to defeat Auburn. A versatile player, Diaz-Matosas can play anywhere on the field, making her a top threat for the Gamecocks in her fourth year.

FIRST TIME OPPONENTS

South Carolina faced four opponents for the first time in 2009 and went 4-0 in those games. The Gamecocks defeated Louisville (3-0), Cincinnati (4-0), UCF (1-0) and South Alabama (6-1). Last season, Carolina went 0-1-2 against first time opponents, drawing UNC Wilmington and #7 Florida State before dropping a tight game to Western Carolina.

SENIOR CLASS BECOMES FIRST TO WIN AT CLEMSON

South Carolina defeated rival Clemson 5-0 last Sunday for the program's first victory at Historic Riggs Field. In a rivalry that has been played annually since 1995 in a home-and-home series, the Gamecocks not only never won at Riggs Field in seven tries but never scored a goal there until the offensive outburst in a 5-0 win. Senior **Shannon Bigbie** hit the game winner in her first start of the year, classmate **Blakely Mattern** scored two goals and senior **Kim Miller** notched two assists in the victory.



OVERTIME MATCHES

DATE	OPPONENT	RESULT
9-15-95	at VCU	W, 1-0
9-29-95	vs. Marquette (Clemson, S.C.)	L, 1-2
10-13-95	Georgia	T, 1-1
10-16-95	Evansville	W, 1-0
10-19-95	College of Charleston	T, 1-1
1995 OVERTIME RECORD: 2-1-2		
9-29-96	at Georgia	L, 1-2
10-27-96	at Auburn	T, 1-1
10-30-96	at Furman	T, 1-1
1996 OVERTIME RECORD: 0-1-2		
9-14-97	Kentucky	L, 3-4
10-10-97	at Georgia Southern	W, 3-2
1997 OVERTIME RECORD: 1-1		
9-4-98	Wake Forest	T, 1-1
9-25-98	at Kentucky	L, 0-1
10-13-98	at Furman	W, 3-2
1998 OVERTIME RECORD: 1-1-1		
9-12-99	Kentucky	L, 1-2
10-12-99	Wofford	W, 2-1
11-4-99	vs. Vanderbilt (SEC Tourn.)	L, 1-2
1999 OVERTIME RECORD: 1-2		
2000 OVERTIME RECORD: 0-0		
9-1-01	at College of Charleston	T, 0-0
9-9-01	vs. UNLV (San Diego, Calif.)	T, 1-1
10-14-01	at LSU	T, 4-4
10-28-01	Mississippi State	L, 1-2
2001 OVERTIME RECORD: 0-1-3		
9-29-02	Florida	W, 1-0
10-11-02	Arkansas	L, 1-2
10-18-02	Georgia	L, 1-2
10-20-02	Tennessee	T, 1-1
10-25-02	at Auburn	T, 1-1
2002 OVERTIME RECORD: 1-2-2		
8-29-03	at Clemson	L, 0-1
9-12-03	at Texas A&M	L, 1-2
9-14-03	at Houston	T, 1-1
10-3-03	Auburn	T, 0-0
10-24-03	at Ole Miss	T, 0-0
2003 OVERTIME RECORD: 0-2-3		
8-31-04	at James Madison	L, 2-3
9-19-04	Charlotte	W, 2-1
10-1-04	Georgia	T, 1-1
10-8-04	at Vanderbilt	T, 1-1
10-17-04	Mississippi State	L, 2-3
10-29-04	Florida	L, 1-2
2004 OVERTIME RECORD: 1-3-2		
10-10-05	Kentucky	L, 1-2
2005 OVERTIME RECORD: 0-1		
9-29-06	Tennessee	T, 0-0
10-16-06	Ole Miss	T, 0-0
10-20-06	LSU	W, 2-1
10-22-06	at Arkansas	T, 1-1
10-27-06	Florida	T, 1-1
11-1-06	vs. Vanderbilt (SEC Tourn.)	T, 1-1
2006 OVERTIME RECORD: 1-0-5		
9-27-07	at Tennessee	L, 2-3
9-30-07	at Georgia	L, 1-2
10-7-07	Vanderbilt	L, 0-1
10-12-07	at Mississippi State	T, 0-0
10-25-07	at LSU	T, 1-1
11-14-07	vs. Duke (NCAA First Rnd.)	T, 1-1
2007 OVERTIME RECORD: 0-3-3		
8-23-08	at UNC Wilmington	T, 0-0
9-7-08	Furman	W, 2-1
9-14-08	vs. Florida State (Auburn, Ala.)	T, 3-3
9-28-08	Georgia	T, 1-1
10-23-08	LSU	T, 0-0
11-14-08	vs. William & Mary (NCAA)	L, 2-3
2008 OVERTIME RECORD: 1-1-4		
10-4-09	at Mississippi State	T, 1-1
10-9-09	Auburn	W, 1-0
TOTAL RECORD: 10-19-28		
UNDER SHELLEY SMITH: 5-13-23		

RETURNING CATEGORY LEADERS

Carolina returns 10 starters from last season's NCAA Tournament team and only lost one senior from the squad that went 11-7-4. South Carolina will enter 2009 as one of the most experienced teams in the nation, and depth will also be available after Coach Shelley Smith signed seven freshmen and landed two transfers for the 2009 season.

Statistical Category Breakdown

Category	2008 Leader (Total)	% Returning	Top Returner
Points	Grimsley (22)	93%	Grimsley (22)
Goals	Grimsley (8)	93%	Grimsley (8)
Game-Winning Goals	Grimsley, Miller, Small (2)	91%	Grimsley, Miller, Small (2)
Assists	Grimsley (6)	46%	Grimsley (6)
Shots	Jacobs (38)	94%	Jacobs (38)
Shots on Goal	Jacobs (26)	91%	Jacobs (26)
Saves	Patton (58)	100%	Patton (58)
Goals Against Average	Patton (0.96)	100%	Patton (0.96)

ALL-AMERICAN DEFENSE

The South Carolina defense has been consistently one of the top in the SEC and in the nation, and all signs point to this season being another strong one for the Garnet and Black. The Gamecocks return two former Freshman All-Americans in senior **Blakely Mattern** and junior **Brittany Rhoades**.

Mattern (Simpsonville, S.C.) has started every game of her career at center back, earning Freshman All-America honors in 2006 and becoming Carolina's first All-American after picking up honors in 2007. Mattern also picked up 2007 SEC Defensive Player of the Year honors to become the first sophomore in conference history to earn the honor, and earned a trip to the US U-20 National Team camp in 2008. Rhoades (Wilmington, Del.) set a USC freshman record with 23 games played and 22 games started in her first year at left back, becoming the second Freshman All-American in as many years for the defense.

MATTERN, GRIMSLEY NAMED PRESEASON ALL-SEC

South Carolina senior defender **Blakely Mattern** and sophomore forward **Kayla Grimsley** have been selected to the third annual women's soccer Coaches Preseason All-SEC team.

Mattern (Simpsonville, S.C.) has been named to the list in all three years of its existence. She is a three-time postseason All-SEC selection and in 2007 became the first sophomore to earn SEC Defensive Player of the Year honors. A 2007 Soccer Buzz All-American and 2008 CoSIDA/ESPN The Magazine First Team Academic All-American, Mattern has started every game of her career and is a three-time All-Southeast Region selection. In 2008, she was the leader of a defense that finished the season second in the SEC in shutouts (8) and ranked in the top two in every major defensive category, including goals allowed, points allowed, shots allowed and shots on goal allowed. The Gamecocks led the league in shots allowed (8.45/game) and shots on goal allowed (3.68/game).

Grimsley (Lakeland, Fla.) earns her first preseason honor after a strong freshman campaign that culminated in her earning second team All-SEC honors, SEC All-Freshman team honors and Soccer Buzz All-Southeast Region honors. She led the team in her rookie season with eight goals and six assists for 22 points, making her only the second freshman and seventh player overall to score 20 points in a season at South Carolina. She tied the program record with a six-match scoring streak that began with the start of conference play, and she became the only freshman in Gamecock history to score a goal in four consecutive matches. She twice earned SEC weekly honors and brought home four national team of the week honors last season.

COACHES TAB GAMECOCKS FOURTH IN SEC EAST

The South Carolina women's soccer team was picked to finish fourth in the Eastern division of the 2009 SEC preseason poll, the conference office announced Wednesday. The Gamecocks are coming off an 11-7-4 record in 2008 with a third place finish in the East with a 5-4-2 record.

South Carolina returns 10 starters and lost only one senior from the 2008 squad that advanced to the NCAA Tournament for the second consecutive year. Senior defender Blakely Mattern and sophomore forward Kayla Grimsley were named to the 11-player Preseason All-SEC team last week after both earned All-SEC honors last season.

Florida was selected as the favorite to claim the 2009 women's soccer title in the poll voted on by the league's 12 head coaches. In the East, Georgia and Tennessee were selected behind Florida with Vanderbilt picked to finish fifth and Kentucky picked sixth. LSU was favored to win the Western Division with eight first-place votes followed by Auburn with four first place votes. Ole Miss, Alabama, Arkansas and Mississippi State round out selections three thru six in the division, respectively.



GOAL SUMMARY

Player (#)	Opp. (Time)	Asst. (#)
Miller (1)	Col. of Charleston (13:42)	-
Grimsley (1)	Col. of Charleston (29:54)	Small (1)
Grimsley (2)	Western Carolina (22:38)	Fahey (1)
Miller (2)	Western Carolina (26:49)	D-Matosas (1)
Small (1)	Louisville (27:09)	Miller (1)
Watts (1)	Louisville (43:52)	-
Grimsley (3)	Louisville (89:51)	D-Matosas (2)
Mattern (1)	Cincinnati (26:54)	Fahey(2), D-Matosas (3)
Diaz-Matosas (1)	Cincinnati (59:32)	Grimsley (1)
Fligg (1)	Cincinnati (79:09)	Miller (2)
Petroni (1)	Cincinnati (81:13)	Miller (3)
Bigbie (1)	Clemson (3:22)	Miller (4), Jacobs (1)
Mattern (2)	Clemson (35:33)	Miller (5)
Jacobs (2)	Clemson (36:51)	Watts (1)
Grimsley (4)	Clemson (65:44)	-
Mattern (3)	Clemson (71:35)	-
Mattern (4)	UNC-W (55:17)	K. Rhoades (1)
Grimsley (5)	UNC-W (63:52)	Fahey (3), Brewer (1)
Grimsley (6)	UCF (27:18)	Fahey (4)
Small (2)	South Alabama (3:30)	Miller (6)
Diaz-Matosas (2)	South Alabama (19:03)	-
Aaron (1)	South Alabama (27:34)	Jacobs (2)
Grimsley (7)	South Alabama (55:53)	K. Rhoades (2)
Holland (1)	South Alabama (59:32)	Mattern (1)
Brewer (1)	South Alabama (73:39)	Petroni (1), Aaron (1)
K. Rhoades (1)	Vanderbilt (15:47)	Small (2), Grimsley (2)
Jacobs (2)	Vanderbilt (51:38)	Bigbie (1)
Watts (2)	Kentucky (55:24)	-
Small (3)	Ole Miss (67:50)	Miller (7)
Jacobs (3)	Mississippi State (45:50)	Grimsley (3)
Diaz-Matosas (3)	Auburn (97:47)	-
Mattern (5)	Alabama (11:07)	Miller (8)
Mattern (6)	Alabama (12:47)	D-Matosas (4)
Grimsley (8)	Georgia (7:07)	-
Grimsley (9)	Tennessee (32:19)	-
Small (4)	Tennessee (55:38)	Grimsley (4)

GOAL BREAKDOWN

At home	17
On the road	13
Neutral Site.....	6
vs. SEC.....	11
vs. Non-Conference.....	25
First Half	19
Second Half	17

ALL-TIME USC SCORING LIST

Rnk.	Name	G	A	Pts.
1.	Jennie Ondo	50	15	115
2.	Morgan McIntyre	29	5	63
3.	Angela Austin	19	16	54
4.	Mindy Sanders	14	24	52
5.	Debbie Smith	19	11	49
6.	Melinda Carter	15	16	46
7.	Kayla Grimsley	17	10	44
8.	Darcell Mollon	15	7	37
T9.	Blakely Mattern	15	6	36
T9.	Ashley Williams	17	2	36
11.	Lydia Bienias	12	10	34
T12.	Lexi Tourtelotte	14	3	31
T12.	Ashley Kirk	9	13	31
T14.	Becca Epstein	10	10	30
T14.	Erin Sullivan	11	8	30

Current Players

Kayla Grimsley	17	10	44
Blakely Mattern	15	6	36
Kim Miller	7	14	28
Sam Diaz-Matosas	8	12	28

ALL-TIME USC GOALTENDING LIST

Rnk.	Name	GAA	SHO
1.	Mollie Patton	0.69	18
T2.	Laura Armstrong	0.79	15
T2.	Elise Matthews	1.24	15
T4.	Lindsay Thorstenson	1.33	9
T4.	Carrie Warner	1.58	9
6.	Carolyn Ortega	1.14	6.5
7.	Emily Crain	1.78	6
8.	Amy Toms	1.71	5
9.	Amanda Sandling	2.04	4.5
10.	Jessica Freas	3.01	1

Current Players

Mollie Patton	0.69	18
---------------	------	----

2009 HONOR ROLL

Kayla Grimsley - Soccer America Team of the Week (Wk5), CollegeSoccer360 Primetime Performer of the Week (Wk5), Preseason All-SEC, Cardinal Classic All-Tournament Team, Carolina's Cup All-Tournament Team

Blakely Mattern - SEC Defensive Player of the Week (Wk2, Wk4), Soccer America Team of the Week (Wk2, Wk4, Wk8), Top Drawer Soccer Team of the Week (Wk4), CollegeSoccer360 Primetime Performer of the Week (Wk6), Cardinal Classic All-Tournament Team, Carolina's Cup Tournament MVP, Preseason All-SEC, Lowe's Senior CLASS Award Finalist

Kim Miller - Cardinal Classic All-Tournament Team, Carolina's Cup All-Tournament Team

Mollie Patton - SEC Defensive Player of the Week (Wk6), Soccer America Team of the Week (Wk3), Cardinal Classic All-Tournament Team

Lindsay Small - Carolina's Cup All-Tournament Team

SEC WEEKLY HONORS

Week	Defensive POW	Offensive POW	Freshman of the Week
1	Kailey Anders, D (Arkansas)	Carrie Patterson, F (Georgia)	Amy Howard, GK (Auburn)
2	Blakely Mattern, D (South Carolina)	Taylor Cunningham, M (Ole Miss)	Rebekah Perry, M (Georgia)
3	Molly Baird, GK (Tennessee)	Molly Kinsella, F (Vanderbilt)	Monica Alvarado, M (Mississippi State)
4	Blakely Mattern, D (South Carolina)	Mick Ingram, M (Tennessee)	Brooke Thigpen, M (Florida)
5	Justine Bernier, GK (Alabama)	Kat Walsh, F (Mississippi State)	Amy Howard, GK (Auburn)
6	Mollie Patton, GK (South Carolina)	Rachel Yopez, F (LSU)	Carlie Banks, F (LSU)
7	Michelle Betos, GK (Georgia)	Melissa Clarke, M (LSU)	Amy Harrison, F (Tennessee)
8	Sydney Hiance, GK (Kentucky)	Danielle Johnson, M (Ole Miss)	Erika Tymrak, M (Florida)
9	Alley Ronaldi, GK (Ole Miss)	Tahnai Annis, M (Florida)	Carlie Banks, F (LSU)
10			



OPPONENT NOTES

ARKANSAS (8-4-4, 2-4-2 SEC)

QUICK FACTS

Location Fayetteville, Ark.
Nickname LadyBaks
Colors Cardinal & White
Conference SEC
Head Coach Erin Aubry
Record at School (Years) First Season
Career Record (Years) 23-38-9 (4 yrs)
Assistant Coaches.. Christine Liberto, Tim Nowak

2008 Record.....11-8-0
Conference Finish 4-7-0 (9th)
Postseason None
Series Record USC leads, 6-3-1
Last Meeting USC, 3-1 (10/26/08)
Letterwinners Returning/Lost16/7
Starters Returning/Lost9/4

Soccer SID Robby Edwards
SID E-mailrobbye@uark.edu
SID Phone(479) 575-2751
Websitewww.ArkansasRazorbacks.com

PROBABLE STARTERS

No.	Name	Pos	Yr.	GP-GS	G	A	Pts.	Shots
2	Laurel Pastor	F	Jr.	16-12	2	4	8	51
7	Kim Schleif	D	Sr.	16-16	1	0	2	14
8	Allie Chandler	F	Fr.	16-13	5	2	12	60
9	Camille Flores	M	Jr.	15-6	0	0	0	7
10	Kelly O'Connor	D	Jr.	16-16	1	0	2	9
11	Ally Atkins	M	Jr.	16-5	3	4	10	11
15	Kathleen Paulsen	M	Sr.	16-15	0	0	0	26
20	Kat Moffett	M	Sr.	16-6	1	0	2	9
22	Kailey Anders	D	So.	16-16	1	0	2	8
23	Lauren Hallauer	D	Jr.	15-15	1	0	2	6

No.	Name	Pos.	Yr.	Min.	GA	GAA.	Svs.	W-L	SO
1	Britni Williams	GK	Jr.	1475:43	9	0.55	80	7-4-4	9

NSCAA/adidas

Week 9 (10/20)

No.	School	Rec.
1.	Stanford	15-0-0
2.	North Carolina	12-1-1
3.	Portland	14-1-0
4.	UCLA	12-2-1
5.	Wake Forest	12-2-1
6.	Notre Dame	12-3-1
7.	Florida State	11-2-1
8.	Boston College	12-2-1
9.	Rutgers	12-2-3
10.	South Carolina	14-1-1
11.	UCF	12-3-1
12.	Florida	11-4-2
13.	Maryland	11-2-2
14.	Southern California	11-4-0
15.	Virginia Tech	11-4-0
16.	Santa Clara	10-5-1
17.	LSU	10-3-3
18.	Purdue	8-3-3
19.	Ohio State	11-2-2
20.	Texas A&M	10-5-1
21.	BYU	13-2-2
22.	Georgia	12-3-1
23.	Washington State	10-3-1
24.	Indiana	9-3-2
25.	Charlotte	13-2-1

NSCAA South Region

Week 9 (10/20)

No.	School	Rec.
1.	Florida	11-4-2
2.	South Carolina	14-1-1
T3.	LSU	10-3-3
T3.	Ole Miss	10-3-2
5.	Georgia	12-3-1
6.	Tennessee	7-6-3
7.	Western Kentucky	12-3-1
8.	Arkansas	8-4-4
9.	Denver	11-5-1
T10.	Vanderbilt	8-7-1
T10.	North Texas	11-4-1

Soccer America

Week 9 (10/19)

No.	School	Rec.
1.	Stanford	15-0-0
2.	Portland	14-1-0
3.	North Carolina	12-1-1
4.	UCLA	12-2-1
5.	Florida State	11-2-1
6.	Boston College	12-2-1
7.	Notre Dame	12-3-1
8.	Maryland	11-2-2
9.	Southern California	11-4-0
10.	South Carolina	14-1-1
11.	BYU	13-2-2
12.	Wake Forest	12-2-1
13.	Virginia Tech	11-4-0
14.	UCF	12-3-1
15.	Rutgers	12-2-3
16.	LSU	10-3-3
17.	Ole Miss	10-3-2
18.	Marquette	11-4-2
19.	Ohio State	11-2-2
20.	Florida	11-4-2
21.	Washington State	10-3-1
22.	Georgetown	12-2-3
23.	Missouri	10-4-3
24.	Georgia	12-3-1
25.	Dayton	10-0-5

Soccer Times

Week 9 (10/20)

No.	School	Rec.
1.	Stanford	15-0-0
2.	North Carolina	12-1-1
3.	Portland	14-1-0
4.	UCLA	12-2-1
5.	Wake Forest	12-2-1
6.	Boston College	12-2-1
7.	Florida State	11-2-1
8.	Notre Dame	12-3-1
9.	South Carolina	14-1-1
10.	Rutgers	12-2-3
11.	Southern California	11-4-0
12.	BYU	13-2-2
13.	Virginia Tech	11-4-0
14.	LSU	10-3-3
15.	Maryland	11-2-2
16.	UCF	12-3-1
17.	Florida	11-4-2
18.	Ohio State	11-2-2
19.	Georgia	12-3-1
20.	Washington State	10-3-1
21.	Texas A&M	10-5-1
22.	Santa Clara	10-5-1
23.	California	8-5-1
23.	Purdue	8-3-3
T25.	St. John's	11-4-1
T25.	Ole Miss	10-3-2



#17 LSU (10-3-3, 6-1-1 SEC)

QUICK FACTS

Location Baton Rouge, La.
Nickname Tigers
Colors Purple & Gold
Conference SEC
Head Coach Brian Lee
Record at School (Years) 43-27-14 (4 yrs)
Career Record (Years) 187-107-24 (15 yrs)
Assistant Coaches Debbie Hensley
 Daniel Brizzard

2008 Record 14-4-2
Conference Finish 7-3-0 (2nd)
Postseason NCAA First Round
Series Record USC leads, 6-1-3
Last Meeting Tied, 0-0 (10/23/08)
Letterwinners Returning/Lost 13/7
Starters Returning/Lost 8/3

Soccer SID Will Stafford
SID E-mail wstaff2@tigers.lsu.edu
SID Phone (225) 578-8226
Website www.LSUsports.net

PROBABLE STARTERS

No.	Name	Pos	Yr.	GP-GS	G	A	Pts.	Shots
3	Malorie Rutledge	M	Sr.	16-16	8	7	23	43
4	Allysha Chapman	M	So.	16-16	0	2	2	11
6	Courtney Alexander	D	Jr.	16-16	1	3	5	21
8	Melissa Clarke	M	Sr.	15-13	7	3	17	40
11	Chelsea Potts	D	Sr.	16-16	0	0	0	3
14	Nikki Bush	D	Sr.	16-16	0	2	2	0
16	Taryne Boudreau	M	So.	15-14	4	1	9	34
21	Katherine Lagow	D	Sr.	16-16	0	0	0	1
22	Kellie Murphy	F	So.	16-1	1	2	4	12
27	Carlie Banks	F	Fr.	16-14	6	1	13	18

No.	Name	Pos.	Yr.	Min.	GA	GAA.	Svs.	W-L	SO
0	Mo Isom	GK	So.	1492:48	9	0.54	58	10-3-3	9

SOUTH CAROLINA WEEKLY RANKINGS

Week	NSCAA	South Region	S. Times	S. America	TOP DRAWER	CollegeSoccer360
Preseason	-	N/A	-	-	45	-
Week 1 (8/24)	rv	4	-	-	43	-
Week 2 (8/31)	rv	2	rv	-	41	-
Week 3 (9/7)	18	2	23	25	26	23
Week 4 (9/14)	13	3	15	12	20	13
Week 5 (9/21)	12	2	13	11	18	11
Week 6 (9/28)	8	2	7	7	15	8
Week 7 (10/5)	7	2	7	8	11	7
Week 8 (10/12)	5	1	5	5	10	6
Week 9 (10/19)	10	2	9	10	11	-



**2009 South Carolina Women's Soccer
South Carolina Game Results (as of Oct 18, 2009)
All games**

Date	Opponent		Score	Overall	Conf	Att.	Goals scored
Aug 27	COL. OF CHARLESTON	W	2-0	1-0-0	0-0-0	612	Kim Miller (unassisted) Kayla Grimsley (Lindsay Small)
Aug 30	WESTERN CAROLINA	W	2-0	2-0-0	0-0-0	489	Kayla Grimsley (Ellen Fahey) Kim Miller (Sam Diaz-Matosas)
09-04-0	at Louisville	W	3-0	3-0-0	0-0-0	1103	Lindsay Small (Kim Miller) Christine Watts (unassisted) Kayla Grimsley (Sam Diaz-Matosas)
09-06-0	vs Cincinnati Bearcats	W	4-0	4-0-0	0-0-0	229	Blakely Mattern (Ellen Fahey;Sam Diaz-Matosas) Sam Diaz-Matosas (Kayla Grimsley) Megan Fligg (Kim Miller) Maria Petroni (Kim Miller)
Sep 11	at Clemson	W	5-0	5-0-0	0-0-0	917	Shannon Bigbie (Kim Miller;Brooke Jacobs) Blakely Mattern (Kim Miller) Brooke Jacobs (Christine Watts) Kayla Grimsley (unassisted) Blakely Mattern (unassisted)
Sep 13	vs UNC Wilmington	W	2-0	6-0-0	0-0-0	155	Blakely Mattern (Kortney Rhoades) Kayla Grimsley (Ellen Fahey;Kacie Brewer)
Sep 18	#17 UCF	W	1-0	7-0-0	0-0-0	1424	Kayla Grimsley (Ellen Fahey)
Sep 20	SOUTH ALABAMA	W	6-1	8-0-0	0-0-0	443	Lindsay Small (Kim Miller) Sam Diaz-Matosas (unassisted) Natalie Aaron (Brooke Jacobs) Kayla Grimsley (Kortney Rhoades) Lolly Holland (Blakely Mattern) Kacie Brewer (Maria Petroni;Natalie Aaron)
* Sep 25	VANDERBILT	W	2-1	9-0-0	1-0-0	756	Kortney Rhoades (Lindsay Small;Kayla Grimsley) Brooke Jacobs (Shannon Bigbie)
* Sep 27	KENTUCKY	W	1-0	10-0-0	2-0-0	672	Christine Watts (unassisted)
* Oct 02	at Ole Miss	W	1-0	11-0-0	3-0-0	513	Lindsay Small (Kim Miller)
* Oct 04	at Mississippi State	TO2	1-1	11-0-1	3-0-1	142	Brooke Jacobs (Kayla Grimsley)
* Oct 09	AUBURN	WOT	1-0	12-0-1	4-0-1	827	Sam Diaz-Matosas (unassisted)
* Oct 11	ALABAMA	W	2-0	13-0-1	5-0-1	1023	Blakely Mattern (Kim Miller) Blakely Mattern (Sam Diaz-Matosas)
* Oct 16	at #16 Georgia	L	1-2	13-1-1	5-1-1	1715	Kayla Grimsley (unassisted)
* Oct 18	at Tennessee	W	2-1	14-1-1	6-1-1	1332	Kayla Grimsley (unassisted) Lindsay Small (Kayla Grimsley)

Team Record	W-L-T	Attendance	Dates	Total	Avg.
Overall:	14-1-1	Total:	16	12352	772
Conference:	6-1-1	Home:	8	6246	781
Home:	8-0	Away:	6	5722	954
Away:	4-1-1	Neutral:	2	384	192
Neutral:	2-0				
Overtime:	1-0-1				



**2009 South Carolina Women's Soccer
South Carolina Combined Team Statistics (as of Oct 18, 2009)
All games**

RECORD:	OVERALL	HOME	AWAY	NEUTRAL
ALL GAMES	14-1-1	8-0	4-1-1	2-0
CONFERENCE	6-1-1	4-0	2-1-1	0-0
NON-CONFERENCE	8-0	4-0	2-0	2-0

Date	Opponent	Score	Att.	#	Player	gp	g	a	pts	sh	sh%	sog	sog%	gw	pk-att	
Aug 27	COL. OF CHARLESTON	W	2-0	612	4	Kayla Grimsley	16	9	4	22	31	.290	17	.548	2	0-0
Aug 30	WESTERN CAROLINA	W	2-0	489	7	Blakely Mattern	16	6	1	13	13	.462	9	.692	3	0-0
09-04-0	at Louisville	W	3-0	1103	5	Kim Miller	16	2	8	12	21	.095	6	.286	1	0-0
09-06-0	vs Cincinnati Bearcats	W	4-0	229	16	Lindsay Small	16	4	2	10	24	.167	12	.500	3	0-0
Sep 11	at Clemson	W	5-0	917	3	Sam Diaz-Matosas	16	3	4	10	19	.158	12	.632	2	0-0
Sep 13	vs UNC Wilmington	W	2-0	155	27	Brooke Jacobs	16	3	2	8	34	.088	21	.618	1	0-0
Sep 18	#17 UCF	W	1-0	1424	8	Christine Watts	16	2	1	5	16	.125	7	.438	1	0-0
Sep 20	SOUTH ALABAMA	W	6-1	443	15	Kortney Rhoades	16	1	2	4	17	.059	9	.529	0	0-0
* Sep 25	VANDERBILT	W	2-1	756	20	Ellen Fahey	16	0	4	4	3	.000	2	.667	0	0-0
* Sep 27	KENTUCKY	W	1-0	672	12	Shannon Bigbie	14	1	1	3	8	.125	5	.625	1	0-0
* Oct 02	at Ole Miss	W	1-0	513	10	Natalie Aaron	15	1	1	3	8	.125	2	.250	0	0-0
* Oct 04	at Mississippi State	To2	1-1	142	23	Kacie Brewer	16	1	1	3	7	.143	5	.714	0	0-0
* Oct 09	AUBURN	Wot	1-0	827	9	Maria Petroni	13	1	1	3	3	.333	2	.667	0	0-0
* Oct 11	ALABAMA	W	2-0	1023	14	Lolly Holland	12	1	0	2	7	.143	2	.286	0	0-0
* Oct 16	at #16 Georgia	L	1-2	1715	2	Megan Fligg	12	1	0	2	2	.500	2	1.000	0	0-0
* Oct 18	at Tennessee	W	2-1	1332	19	Kira Campbell	14	0	0	0	10	.000	4	.400	0	0-0
					18	Ali Glemser	12	0	0	0	6	.000	4	.667	0	0-0
					21	Brittany Rhoades	16	0	0	0	4	.000	2	.500	0	0-0
					22	Dani Henry	11	0	0	0	3	.000	0	.000	0	0-0
					25	Maddy Kill	7	0	0	0	1	.000	1	1.000	0	0-0
					29	Mollie Patton	16	0	0	0	0	.000	0	.000	0	0-0
					28	Brittany DeWitt	4	0	0	0	0	.000	0	.000	0	0-0
					26	Rae Wilson	4	0	0	0	0	.000	0	.000	0	0-0
					17	Maggie Blackwell	2	0	0	0	0	.000	0	.000	0	0-0
					11	Idana DeCecco	2	0	0	0	0	.000	0	.000	0	0-0
					6	Samantha Abrahart	1	0	0	0	0	.000	0	.000	0	0-0
					1	Roya Mojarab	1	0	0	0	0	.000	0	.000	0	0-0
					Total		16	36	32	104	237	.152	124	.523	14	0-0
					Opponents		16	6	3	15	127	.047	59	.465	1	1-1

TEAM STATISTICS	SC	OPP
SHOT STATISTICS		
Goals-Shot attempts	36-237	6-127
Goals scored per game	2.25	0.38
Shot pct.	.152	.047
Shots on goal-Attempts	124-237	59-127
SOG pct.	.523	.465
Shots/Game	14.8	7.9
CORNER KICKS	77	52
PENALTY KICKS	0-0	1-1
PENALTIES		
Yellow cards	6	8
Red cards	0	0
ATTENDANCE		
Total	6246	5722
Dates/Avg Per Date	8/781	6/954
Neutral Site #/Avg	2/192	

#	Goalie	GP	Min.	GA	GAAvg	Saves	Pct	W-L-T	Sh
29	Mollie Patton	16	1437:19	5	0.31	51	.911	14-1-1	1
1	Roya Mojarab	1	30:28	1	2.95	2	.667	0-0-0	
	Total	16	1467:47	6	0.37	53	.898	14-1-1	1
	Opponents	16	1467:47	36	2.21	88	.710	1-12-1	

Goals by Period	1st	2nd	OT	OT2	Total
South Carolina	19	16	1	0	36
Opponents	0	6	0	0	6

Shots by Period	1st	2nd	OT	OT2	Total
South Carolina	126	107	4	0	237
Opponents	44	79	2	2	127

Saves by Period	1st	2nd	OT	OT2	Total
South Carolina	17	36	0	0	53
Opponents	49	39	0	0	88

Corners by Period	1st	2nd	OT	OT2	Total
South Carolina	42	34	0	1	77
Opponents	20	32	0	0	52

Fouls by Period	1st	2nd	OT	OT2	Total
South Carolina	63	76	4	0	143

**SOUTH CAROLINA MATCH-BY-MATCH STATISTICS**

DATE	OPPONENT	G	A	PTS	SH	PCT	SOG	SOG%	CORNERS	FOULS	YC	SAVES	GA
8/27	Col. Charleston	2	2	6	11	.182	7	.636	3	7	0	1	0
8/31	Western Carolina	2	2	6	11	.182	7	.636	6	4	0	0	0
9/4	Louisville	3	2	8	12	.250	8	.667	7	10	0	6	0
9/6	Cincinnati	4	5	13	22	.182	15	.682	7	7	0	5	0
9/11	Clemson	5	4	14	12	.417	7	.583	4	9	1	6	0
9/13	UNC Wilmington	2	3	7	23	.087	9	.391	3	7	0	6	0
9/18	#17 UCF	1	1	3	8	.125	4	.500	6	10	1	3	0
9/20	South Alabama	6	6	18	23	.261	13	.565	6	7	0	3	1
9/25	Vanderbilt	2	3	7	14	.143	6	.429	6	11	0	0	1
9/27	Kentucky	1	0	2	14	.071	8	.571	8	9	0	1	0
10/2	Ole Miss	1	1	3	10	.100	5	.500	1	5	0	5	0
10/4	Mississippi State	1	1	3	14	.071	3	.214	2	11	1	5	1
10/9	Auburn	1	0	2	17	.059	8	.471	4	13	2	3	0
10/11	Alabama	2	2	6	18	.111	11	.611	7	15	0	1	0
10/16	#23 Georgia	1	0	2	12	.083	8	.667	1	4	0	2	2
10/18	Tennessee	2	1	5	16	.125	5	.313	6	14	1	6	1
10/22	Arkansas												
10/25	#17 LSU												
10/30	Florida												
11/4	SEC Tournament												
South Carolina		36	32	104	237	.152	124	.523	77	143	6	53	6

Bold - Season-High

OPPONENT MATCH-BY-MATCH STATISTICS

DATE	OPPONENT	G	A	PTS	SH	PCT	SOG	SOG%	CORNERS	FOULS	YC	SAVES	GA
8/27	Col. Charleston	0	0	0	2	.000	1	.500	3	7	0	5	2
8/31	Western Carolina	0	0	0	0	N/A	0	N/A	1	9	0	5	2
9/4	Louisville	0	0	0	10	.000	6	.600	3	10	0	5	3
9/6	Cincinnati	0	0	0	10	.000	5	.500	2	12	0	11	4
9/11	Clemson	0	0	0	12	.000	6	.500	4	8	1	2	5
9/13	UNC Wilmington	0	0	0	8	.000	6	.750	0	10	0	7	2
9/18	#17 UCF	0	0	0	12	.000	3	.250	3	11	1	3	1
9/20	South Alabama	1	1	3	4	.250	4	1.000	2	9	0	7	6
9/25	Vanderbilt	1	1	3	8	.125	1	.125	4	8	1	4	2
9/27	Kentucky	0	0	0	2	.000	1	.500	4	10	0	7	1
10/2	Ole Miss	0	0	0	8	.000	5	.625	5	4	0	4	1
10/4	Mississippi State	1	0	2	12	.083	6	.500	0	12	2	2	1
10/9	Auburn	0	0	0	7	.000	3	.429	2	15	1	7	1
10/11	Alabama	0	0	0	5	.000	1	.200	6	12	0	9	2
10/16	#23 Georgia	2	1	5	8	.250	4	.500	5	4	0	7	1
10/18	Tennessee	1	0	2	19	.052	7	.368	8	13	0	3	2
10/22	Arkansas												
10/25	#17 LSU												
10/30	Florida												
11/4	SEC Tournament												
Opponents		6	3	15	127	.047	59	.465	52	154	6	88	36



GAME-BY-GAME INDIVIDUAL LEADERS

DATE	OPPONENT	W/L	SCORE	HIGH SHOTS	HIGH SOG	HIGH GOALS	HIGH ASSISTS	HIGH POINTS
8/27	Col. Charleston	W	2-0	Miller, K. Rhoades (2)	K. Rhoades (2)	Miller, Grimsley (1)	Small (1)	Miller, Grimsley (2)
8/31	Western Carolina	W	2-0	Diaz, Miller, Grimsley (2)	Diaz, Grimsley (2)	Miller, Grimsley (1)	Fahey, Diaz-Matosas (1)	Miller, Grimsley (2)
9/4	Louisville	W	3-0	Watts (3)	Grimsley, Watts (2)	Small, Grimsley, Watts (1)	Miller, Diaz-Matosas (1)	Small, Watts, Grim (2)
9/6	Cincinnati	W	4-0	Small (5)	Mattern, Small (3)	4 players (1)	Miller (2)	Diaz-Matosas (3)
9/11	Clemson	W	5-0	Campbell (4)	Mattern, Campbell (2)	Mattern (2)	Miller (2)	Mattern (4)
9/13	UNC Wilmington	W	2-0	Jacobs (5)	Jacobs (2)	Mattern, Grimsley (1)	Rhoades, Fahey, Brewer (1)	Mattern, Grimsley (2)
9/18	#17 UCF	W	1-0	Diaz-Matosas (2)	4 players (1)	Grimsley (1)	Fahey (1)	Grimsley (2)
9/20	South Alabama	W	6-1	Jacobs, Grimsley (4)	Brewer (3)	6 players (1)	6 players (1)	6 players (2)
9/25	Vanderbilt	W	2-1	Jacobs (4)	Jacobs (3)	K. Rhoades, Jacobs (1)	Grimsley, Bigbie, Small (1)	K. Rhoades, Jacobs (2)
9/27	Kentucky	W	1-0	Watts, Grimsley (3)	Jacobs, Watts (2)	Watts (1)	-	Watts (2)
10/2	Ole Miss	W	1-0	Small (5)	Small (3)	Small (1)	Miller (1)	Small (2)
10/4	Mississippi State	T	1-1	Miller, Jacobs (3)	Diaz, Fahey, Jacobs (1)	Jacobs (1)	Grimsley (1)	Jacobs (2)
10/9	Auburn	W	1-0	Diaz-Matosas (4)	Jacobs (2)	Diaz-Matosas (1)	-	Diaz-Matosas (2)
10/11	Alabama	W	2-0	Jacobs, Diaz-Matosas (3)	Diaz, Mattern, K. Rh (2)	Mattern (2)	Miller, Diaz-Matosas (2)	Mattern (4)
10/16	Georgia	L	1-2	Jacobs (4)	Jacobs (3)	Grimsley (1)	-	Grimsley (2)
10/18	Tennessee	W	2-1	Grimsley (7)	Grimsley (3)	Grimsley, Small (1)	Grimsley (1)	Grimsley (3)
10/22	Arkansas							
10/25	LSU							
10/30	Florida							
11/4	SEC Tournament							

GAME-BY-GAME STARTERS

DATE	OPPONENT	W/L	F	F	M/F	M	M	M	D	D	D	D	GK
8/27	Col. Charleston	W	Jacobs	Grimsley	Campbell	Miller	Small	K. Rhoades	Mattern	Diaz-Matosas	Fahey	B. Rhoades	Patton
8/31	Western Carolina	W	Jacobs	Grimsley	Campbell	Miller	Small	K. Rhoades	Mattern	Diaz-Matosas	Fahey	B. Rhoades	Patton
9/4	Louisville	W	Jacobs	Grimsley	Campbell	Miller	Small	K. Rhoades	Mattern	Diaz-Matosas	Fahey	B. Rhoades	Patton
9/6	Cincinnati	W	Jacobs	Grimsley	Campbell	Miller	Small	K. Rhoades	Mattern	Diaz-Matosas	Fahey	B. Rhoades	Patton
9/11	Clemson	W	Jacobs	Grimsley	Campbell	Miller	Small	Bigbie	Mattern	Diaz-Matosas	Fahey	B. Rhoades	Patton
9/13	UNC Wilmington	W	Jacobs	Grimsley	Campbell	Miller	Small	K. Rhoades	Mattern	Diaz-Matosas	Fahey	Bigbie	Patton
9/18	#17 UCF	W	Jacobs	Grimsley	Bigbie	Miller	Small	K. Rhoades	Mattern	Diaz-Matosas	Fahey	B. Rhoades	Patton
9/20	South Alabama	W	Jacobs	Grimsley	Bigbie	Miller	Small	K. Rhoades	Mattern	Fligg	Fahey	B. Rhoades	Patton
9/25	Vanderbilt	W	Jacobs	Grimsley	Bigbie	Miller	Small	K. Rhoades	Mattern	Diaz-Matosas	Fahey	B. Rhoades	Patton
9/27	Kentucky	W	Jacobs	Grimsley	Bigbie	Miller	Small	K. Rhoades	Mattern	Diaz-Matosas	Fahey	B. Rhoades	Patton
10/2	Ole Miss	W	Jacobs	Grimsley	Bigbie	Miller	Small	K. Rhoades	Mattern	Diaz-Matosas	Fahey	B. Rhoades	Patton
10/4	Mississippi State	T	Jacobs	Grimsley	Bigbie	Miller	Small	K. Rhoades	Mattern	Diaz-Matosas	Fahey	B. Rhoades	Patton
10/9	Auburn	W	Brewer	Grimsley	Bigbie	Miller	Small	K. Rhoades	Mattern	Diaz-Matosas	Fahey	B. Rhoades	Patton
10/11	Alabama	W	Jacobs	Grimsley	Bigbie	Miller	Small	K. Rhoades	Mattern	Diaz-Matosas	Fahey	B. Rhoades	Patton
10/16	#23 Georgia	L	Jacobs	Grimsley	Bigbie	Miller	Small	K. Rhoades	Mattern	Diaz-Matosas	Fahey	B. Rhoades	Patton
10/18	Tennessee	W	Jacobs	Grimsley	Bigbie	Miller	Small	K. Rhoades	Mattern	Diaz-Matosas	Fahey	B. Rhoades	Patton
10/22	Arkansas												
10/25	#17 LSU												
10/30	Florida												
11/4	SEC Tournament												



HOME-ONLY INDIVIDUAL STATISTICS

##	PLAYER	GP-GS	G	A	PTS	SH	PCT	SOG	SOG%	GWG	GWA
2	Megan Fligg	7-1	0	0	0	1	.000	1	1.000	0	0
3	Samantha Diaz-Matosas	8-7	2	2	6	15	.133	9	.600	2	0
4	Kayla Grimsley	8-8	4	1	9	15	.267	9	.600	2	0
5	Kim Miller	8-8	2	2	6	10	.200	2	.200	1	1
7	Blakely Mattern	8-8	2	1	5	4	.500	3	.750	1	0
8	Christine Watts	8-0	1	0	2	9	.111	4	.444	0	1
9	Maria Petroni	6-0	0	1	1	1	.000	0	.000	0	0
10	Natalie Aaron	8-0	1	1	3	5	.200	2	.400	0	0
11	Idana DeCecco	1-0	0	0	0	0	.000	0	.000	0	0
12	Shannon Bigbie	6-6	0	1	1	2	.000	0	.000	0	1
13	Jocelyn Spurrier	0-0	0	0	0	0	.000	0	.000	0	0
14	Lolly Holland	6-0	1	0	2	3	.333	1	.333	0	0
15	Kortney Rhoades	8-8	1	1	3	11	.091	8	.727	0	0
16	Lindsay Small	8-8	1	2	4	7	.143	2	.286	0	0
17	Maggie Blackwell	1-0	0	0	0	0	.000	0	.000	0	0
18	Ali Glemser	7-0	0	0	0	4	.000	3	.750	0	0
19	Kira Campbell	6-2	0	0	0	2	.000	2	1.000	0	0
20	Ellen Fahey	8-8	0	2	2	1	.000	1	1.000	0	2
21	Brittany Rhoades	8-8	0	0	0	2	.000	0	.000	0	0
22	Dani Henry	6-0	0	0	0	2	.000	0	.000	0	0
23	Kacie Brewer	8-1	1	0	2	5	.200	4	.800	0	0
25	Maddy Kill	3-0	0	0	0	1	.000	1	1.000	0	0
26	Rae Wilson	2-0	0	0	0	0	.000	0	.000	0	0
27	Brooke Jacobs	8-7	1	1	3	17	.059	12	.706	0	1
28	Brittany DeWitt	2-0	0	0	0	0	.000	0	.000	0	0
TEAM											
South Carolina		8	17	15	49	116	.116	64	.552	8	4
Opponents		8	2	2	6	40	.050	14	.350	0	0

GOALKEEPERS

	GP-GS	Min.	GA	GAA.	Svs.	Save %	W-L	SO	
0	Alex Holland	0-0	00:00	0	0.00	0	0-0-0	0	
1	Roya Mojarab	1-0	30:28	1	2.95	2	0-0-0	0	
29	Mollie Patton	8-8	697:19	1	0.13	10	8-0-0	6	
35	Darien Vercillo	0-0	00:00	0	0.00	0	0-0-0	0	
TEAM									
South Carolina		8	727:47	2	0.25	12	.857	8-0-0	6
Opponents		8	727:47	17	2.10	47	.734	0-8-0	0

HOME-ONLY TEAM STATS

SCORING	USC	OPP
Goals.....	17	2
Assists.....	15	2
Points.....	49	6
SHOTS		
Shots	116	40
Pct.116	.050
Shots On Goal.....	64	14
SOG%.....	.552	.350
FOULS		
Fouls.....	76	81
Cards	3	3
GOALKEEPING		
Saves	12	47
Goals Against.....	2	17
GAA	0.25	2.10



AWAY-ONLY INDIVIDUAL STATISTICS

##	PLAYER	GP-GS	G	A	PTS	SH	PCT	SOG	SOG%	GWG	GWA
2	Megan Fligg	5-0	1	0	2	1	1.000	1	1.000	0	0
3	Samantha Diaz-Matosas	8-8	1	2	4	4	.250	3	.750	0	1
4	Kayla Grimsley	8-8	5	3	13	16	.313	8	.500	0	1
5	Kim Miller	8-8	0	6	6	11	.000	4	.364	0	3
7	Blakely Mattern	8-8	4	0	8	9	.444	6	.667	2	0
8	Christine Watts	8-0	1	1	3	7	.143	3	.429	0	0
9	Maria Petroni	7-0	1	0	2	2	.500	2	1.000	0	0
10	Natalie Aaron	8-0	0	0	0	3	.000	0	.000	0	0
11	Idana DeCecco	1-0	0	0	0	0	.000	0	.000	0	0
12	Shannon Bigbie	8-6	1	0	2	6	.167	5	.833	1	0
13	Jocelyn Spurrier	0-0	0	0	0	0	.000	0	.000	0	0
14	Lolly Holland	6-0	0	0	0	4	.000	1	.250	0	0
15	Kortney Rhoades	8-7	0	1	1	6	.000	1	.167	0	1
16	Lindsay Small	8-8	3	0	6	18	.167	10	.556	3	0
17	Maggie Blackwell	1-0	0	0	0	0	.000	0	.000	0	0
18	Ali Glemser	5-0	0	0	0	2	.000	1	.500	0	0
19	Kira Campbell	8-4	0	0	0	7	.000	2	.286	0	0
20	Ellen Fahey	8-8	0	2	2	2	.000	1	.500	0	1
21	Brittany Rhoades	8-7	0	0	0	2	.000	2	1.000	0	0
22	Dani Henry	5-0	0	0	0	1	.000	0	.000	0	0
23	Kacie Brewer	8-0	0	1	1	2	.000	1	.500	0	0
25	Maddy Kill	4-0	0	0	0	0	.000	0	.000	0	0
26	Rae Wilson	2-0	0	0	0	0	.000	0	.000	0	0
27	Brooke Jacobs	8-8	2	1	5	17	.118	9	.529	0	1
28	Brittany DeWitt	1-0	0	0	0	0	.000	0	.000	0	0
TEAM											
South Carolina		8	19	17	55	121	.157	60	.496	6	8
Opponents		8	4	1	9	87	.046	45	.517	1	1

GOALKEEPERS

	GP-GS	Min.	GA	GAA.	Svs.	Save %	W-L	SO	
0	Alex Holland	0-0	00:00	0	0.00	0	0-0-0	0	
1	Roya Mojarab	0-0	00:00	0	0.00	0	0-0-0	0	
29	Mollie Patton	8-8	740:00	4	0.48	41	.911	6-1-1	5
35	Darien Vercillo	0-0	00:00	0	0.00	0	0-0-0	0	
TEAM									
South Carolina		8	740:00	4	0.48	41	.911	6-1-1	5
Opponents		8	740:00	19	2.31	41	.683	1-6-1	0

AWAY-ONLY TEAM STATS

SCORING	USC	OPP
Goals.....	19	4
Assists.....	17	1
Points.....	55	9
SHOTS		
Shots	121	87
Pct.157	.046
Shots On Goal.....	60	45
SOG%.....	.496	.517
FOULS		
Fouls.....	67	73
Cards	3	3
GOALKEEPING		
Saves	41	41
Goals Against.....	4	19
GAA	0.48	2.31



EXHIBITION - MEXICAN NAT'L TEAM (2-0)

Soccer Box Score (Final)
The Automated ScoreBook For Soccer
Mexico U20 vs South Carolina (Aug 21, 2009 at Greenville, S.C.)

Mexico U20 vs. South Carolina (1-0-0) vs.
Date: Aug 21, 2009 • Attendance: 3000
Weather:

Table with columns: Po ## Player, Sh, SO, G, A, Min. Lists player stats for Mexico U20.

Table with columns: Po ## Player, Sh, SO, G, A, Min. Lists player stats for South Carolina.

Table with columns: ## Goalkeepers, Min, GA, Saves. Lists goalkeeper stats.

Table with columns: Shots by period, 1, 2, Total. Lists shot statistics.

Table with columns: Corner kicks, 1, 2, Total. Lists corner kick statistics.

Table with columns: Scoring summary, No., Time, Team, Goal scorer, Assist, Description. Lists goal details.

Cautions and ejections:
YC-SC #20 (62:36)
Stadium: MeSA Soccer Complex
Officials:
Offsides: Mexico U20 1, South Carolina 3.

Table with columns: Goals by period, 1, 2, Total. Lists goal statistics.

Table with columns: Po ## Player, Sh, SO, G, A, Min. Lists player stats for Mexico U20.

Table with columns: ## Goalkeepers, Min, GA, Saves. Lists goalkeeper stats.

Table with columns: Shots by period, 1, 2, Total. Lists shot statistics.

Table with columns: Corner kicks, 1, 2, Total. Lists corner kick statistics.

Table with columns: Scoring summary, No., Time, Team, Goal scorer, Assist, Description. Lists goal details.

Cautions and ejections:
YC-SC #20 (62:36)
Stadium: MeSA Soccer Complex
Officials:
Offsides: Mexico U20 1, South Carolina 3.

Official's signature

GAME 2 - WCU (2-0)

Soccer Box Score (Final)
2009 South Carolina Women's Soccer
Western Carolina vs South Carolina (Aug 30, 2009 at Columbia, S.C.)

Western Carolina (2-1-0) vs. South Carolina (2-0-0) vs.
Date: Aug 30, 2009 • Attendance: 489
Weather:

Table with columns: Po ## Player, Sh, SO, G, A, Min. Lists player stats for Western Carolina.

Table with columns: ## Goalkeepers, Min, GA, Saves. Lists goalkeeper stats.

Table with columns: Shots by period, 1, 2, Total. Lists shot statistics.

Table with columns: Corner kicks, 1, 2, Total. Lists corner kick statistics.

Table with columns: Scoring summary, No., Time, Team, Goal scorer, Assist, Description. Lists goal details.

Cautions and ejections:
Stadium: Stone Stadium
Officials: Referee: Joe Balazs; Asst. Referee: Alan Correa; Steve Abbott;
Timekeeper: Adrienne Cunningham; Scorer: Miquel Jacobs;
Offsides: Western Carolina 0, South Carolina 4.

Table with columns: Goals by period, 1, 2, Total. Lists goal statistics.

Table with columns: Po ## Player, Sh, SO, G, A, Min. Lists player stats for South Carolina.

Table with columns: ## Goalkeepers, Min, GA, Saves. Lists goalkeeper stats.

Table with columns: Shots by period, 1, 2, Total. Lists shot statistics.

Table with columns: Corner kicks, 1, 2, Total. Lists corner kick statistics.

Table with columns: Scoring summary, No., Time, Team, Goal scorer, Assist, Description. Lists goal details.

Cautions and ejections:
Stadium: Stone Stadium
Officials: Referee: Joe Balazs; Asst. Referee: Alan Correa; Steve Abbott;
Timekeeper: Adrienne Cunningham; Scorer: Miquel Jacobs;
Offsides: Western Carolina 0, South Carolina 4.

Official's signature

GAME 1 - CoFC (2-0)

Soccer Box Score (Final)
The Automated ScoreBook For Soccer
Col. of Charleston vs South Carolina (Aug 27, 2009 at Columbia, S.C.)

Col. of Charleston (0-1-0) vs. South Carolina (1-0-0) vs.
Date: Aug 27, 2009 • Attendance: 612
Weather:

Table with columns: Po ## Player, Sh, SO, G, A, Min. Lists player stats for Col. of Charleston.

Table with columns: ## Goalkeepers, Min, GA, Saves. Lists goalkeeper stats.

Table with columns: Shots by period, 1, 2, Total. Lists shot statistics.

Table with columns: Corner kicks, 1, 2, Total. Lists corner kick statistics.

Table with columns: Scoring summary, No., Time, Team, Goal scorer, Assist, Description. Lists goal details.

Cautions and ejections:
Stadium: Stone Stadium
Officials: Referee: Jeremy Brooks; Asst. Referee: John Tanverdi; Kenneth Ayers;
Timekeeper: Bryan Powell; Scorer: Miquel Jacobs;
Offsides: Col. of Charleston 1, South Carolina 2.

Table with columns: Goals by period, 1, 2, Total. Lists goal statistics.

Table with columns: Po ## Player, Sh, SO, G, A, Min. Lists player stats for South Carolina.

Table with columns: ## Goalkeepers, Min, GA, Saves. Lists goalkeeper stats.

Table with columns: Shots by period, 1, 2, Total. Lists shot statistics.

Table with columns: Corner kicks, 1, 2, Total. Lists corner kick statistics.

Table with columns: Scoring summary, No., Time, Team, Goal scorer, Assist, Description. Lists goal details.

Cautions and ejections:
Stadium: Stone Stadium
Officials: Referee: Jeremy Brooks; Asst. Referee: John Tanverdi; Kenneth Ayers;
Timekeeper: Bryan Powell; Scorer: Miquel Jacobs;
Offsides: Col. of Charleston 1, South Carolina 2.

Official's signature

GAME 3 - Louisville (3-0)

Soccer Box Score (Final)
2009 South Carolina Women's Soccer
South Carolina vs Louisville (09-04-09 at Louisville, Ky.)

South Carolina (3-0) vs. Louisville (1-2) vs.
Date: 09-04-09 • Attendance: 1103
Weather:

Table with columns: Po ## Player, Sh, SO, G, A, Min. Lists player stats for South Carolina.

Table with columns: ## Goalkeepers, Min, GA, Saves. Lists goalkeeper stats.

Table with columns: Shots by period, 1, 2, Total. Lists shot statistics.

Table with columns: Corner kicks, 1, 2, Total. Lists corner kick statistics.

Table with columns: Scoring summary, No., Time, Team, Goal scorer, Assist, Description. Lists goal details.

Cautions and ejections:
Stadium: Cardinal Park
Officials: Referee: Kelly R. Ross; Asst. Referee: Rachel Bramlage; Andy Ellsworth;
Alt. Official: Mike Dutt; Timekeeper: Kent Jennings; Scorer: Garrett Wall;
Offsides: South Carolina 4, Louisville 2.

Table with columns: Goals by period, 1, 2, Total. Lists goal statistics.

Table with columns: Po ## Player, Sh, SO, G, A, Min. Lists player stats for Louisville.

Table with columns: ## Goalkeepers, Min, GA, Saves. Lists goalkeeper stats.

Table with columns: Shots by period, 1, 2, Total. Lists shot statistics.

Table with columns: Corner kicks, 1, 2, Total. Lists corner kick statistics.

Table with columns: Scoring summary, No., Time, Team, Goal scorer, Assist, Description. Lists goal details.

Cautions and ejections:
Stadium: Cardinal Park
Officials: Referee: Kelly R. Ross; Asst. Referee: Rachel Bramlage; Andy Ellsworth;
Alt. Official: Mike Dutt; Timekeeper: Kent Jennings; Scorer: Garrett Wall;
Offsides: South Carolina 4, Louisville 2.

Official's signature

GAME 8 - SOUTH ALABAMA (6-1)

Soccer Box Score (Final)
2009 South Carolina Women's Soccer
South Alabama vs #12 South Carolina (Sep 20, 2009 at Columbia, S.C.)

South Alabama (2-6-0) vs.
South Carolina (8-0-0)
Date: Sep 20, 2009 • Attendance: 443
Weather:

South Alabama Po ## Player Sh SO G A Min

Goals by period 1 2 Total

South Carolina Po ## Player Sh SO G A Min

Goalkeepers Min GA Saves

Shots by period 1 2 Total

Corner kicks 1 2 Total

Scoring summary:

No. Time Team Goal scorer Assist Description

Cautions and ejections:

Stadium: Stone Stadium
Officials: Referee: Alan Schechtman; Asst. Referee: Kevin Tempel; Karen Tempel;
Offsides: South Alabama 0, South Carolina 5.

Official's signature

GAME 10 - KENTUCKY (1-0)

Soccer Box Score (Final)
2009 South Carolina Women's Soccer
Kentucky vs #11 South Carolina (Sep 27, 2009 at Columbia, S.C.)

Kentucky (3-4-3) vs.
South Carolina (10-0-0)
Date: Sep 27, 2009 • Attendance: 672
Weather:

Kentucky Po ## Player Sh SO G A Min

Goals by period 1 2 Total

South Carolina Po ## Player Sh SO G A Min

Goalkeepers Min GA Saves

Shots by period 1 2 Total

Corner kicks 1 2 Total

Scoring summary:

No. Time Team Goal scorer Assist Description

Cautions and ejections:

Stadium: Stone Stadium
Officials: Referee: Tony Russo; Asst. Referee: Skye Arthur Banning; Melanie Johnson;
Alt. Official: Rob Mann; Scorer: Miquel Jacobs;
Offsides: Kentucky 0, South Carolina 2.

Official's signature

GAME 9 - VANDERBILT (2-1)

Soccer Box Score (Final)
2009 South Carolina Women's Soccer
Vanderbilt vs #11 South Carolina (Sep 25, 2009 at Columbia, S.C.)

Vanderbilt (6-2-1) vs.
South Carolina (9-0-0)
Date: Sep 25, 2009 • Attendance: 756
Weather:

Vanderbilt Po ## Player Sh SO G A Min

Goals by period 1 2 Total

South Carolina Po ## Player Sh SO G A Min

Goalkeepers Min GA Saves

Shots by period 1 2 Total

Corner kicks 1 2 Total

Scoring summary:

No. Time Team Goal scorer Assist Description

Cautions and ejections:

Stadium: Stone Stadium
Officials: Referee: Rachel Woo; Asst. Referee: Steve Abbott; Chris Shanku;
Alt. Official: John Tanverdi; Timekeeper: John Tanverdi; Scorer: Miquel Jacobs;
Offsides: Vanderbilt 1, South Carolina 0.

Official's signature

GAME 11 - Ole Miss (1-0)

Soccer Box Score (Final)
2009 South Carolina Women's Soccer
#7 South Carolina vs Ole Miss (Oct 02, 2009 at Oxford, Miss.)

South Carolina (11-0, 3-0 SEC) vs.
Ole Miss (7-3, 1-1 SEC)
Date: Oct 02, 2009 • Attendance: 513
Weather: Low 70s, clear skies, full moon

South Carolina Po ## Player Sh SO G A Min

Goals by period 1 2 Total

Ole Miss Po ## Player Sh SO G A Min

Goalkeepers Min GA Saves

Shots by period 1 2 Total

Corner kicks 1 2 Total

Scoring summary:

No. Time Team Goal scorer Assist Description

Cautions and ejections:

Stadium: Ole Miss Soccer Stad
Officials: Referee: Daniel Radford; Asst. Referee: Kyle Borne; John White;
Alt. Official: Steve Walker; Timekeeper: Yamika Barnes; Scorer: Joey Jones;
Offsides: South Carolina 2, Ole Miss 1.

Official's signature



GAME 12 - Mississippi State (1-1)

Soccer Box Score (Final) 2009 South Carolina Women's Soccer

#8 South Carolina vs Mississippi State (Oct 04, 2009 at Starkville, Miss.)

South Carolina 11-0-1 (3-0-1 SEC) vs.
Mississippi State 8-2-2 (0-2-2 SEC)
Date: Oct 04, 2009 • Attendance: 142
Weather:

Table with columns: Po ## Player, Sh, SO, G, A, Min. Lists player stats for South Carolina.

Goals by period table with columns: 1, 2, OT, O2, Total. Shows 1 goal in period 1.

Table with columns: Po ## Player, Sh, SO, G, A, Min. Lists player stats for Mississippi State.

Totals table for Mississippi State: 12 6 1 0

Goalkeepers table with columns: ##, Min, GA, Saves. Lists Mollie Patton.

Goalkeepers table with columns: ##, Min, GA, Saves. Lists Taryn Holland.

Saves by period table with columns: 1, 2, OT, O2, Total. Shows 14 saves total.

Saves by period table with columns: 1, 2, OT, O2, Total. Shows 5 saves total.

Corner kicks table with columns: 1, 2, OT, O2, Total. Shows 2 total corner kicks.

Fouls table with columns: 1, 2, OT, O2, Total. Shows 11 total fouls.

Scoring summary:

Table with columns: No., Time Team, Goal scorer, Assist, Description. Lists Brooke Jacobs (3) and Rachel Wannek (4).

Cautions and ejections:

YC-MSU #18 (21:45); YC-SC #10 (30:09); YC-MSU #22 (33:04)

Stadium: MSU Soccer Field

Officials: Referee: Adam Garner; Asst. Referee: Wanda Porter; Peter Valentino;

Alt. Official: Sims Meredith; Scorer: Brock Turmipseid;

Offsides: South Carolina 3, Mississippi State 0.

Official's signature

GAME 14 - ALABAMA (2-0)

Soccer Box Score (Final) 2009 South Carolina Women's Soccer

Alabama vs #7 South Carolina (Oct 11, 2009 at Columbia, S.C.)

Alabama (5-6-1, 1-3-1 SEC) vs.
South Carolina (13-0-1, 5-0-1 SEC)
Date: Oct 11, 2009 • Attendance: 1023
Weather:

Table with columns: Po ## Player, Sh, SO, G, A, Min. Lists player stats for Alabama.

Goals by period table with columns: 1, 2, Total. Shows 2 goals total.

Table with columns: Po ## Player, Sh, SO, G, A, Min. Lists player stats for South Carolina.

Goalkeepers table with columns: ##, Min, GA, Saves. Lists Mollie Patton.

Goalkeepers table with columns: ##, Min, GA, Saves. Lists Justine Bernier.

Saves by period table with columns: 1, 2, Total. Shows 18 saves total.

Saves by period table with columns: 1, 2, Total. Shows 9 saves total.

Corner kicks table with columns: 1, 2, Total. Shows 7 total corner kicks.

Fouls table with columns: 1, 2, Total. Shows 15 total fouls.

Scoring summary:

Table with columns: No., Time Team, Goal scorer, Assist, Description. Lists Blakely Mattern (5) and Sam Diaz-Matosas.

Cautions and ejections:

Stadium: Stone Stadium

Officials: Referee: Tim Deby Singh; Asst. Referee: Mark Sauro; Melvin Machayo;

Alt. Official: John Tanverdi;

Offsides: Alabama 0, South Carolina 2.

Official's signature

GAME 13 - AUBURN (1-0)

Soccer Box Score (Final)

2009 South Carolina Women's Soccer
Auburn vs #7 South Carolina (Oct 09, 2009 at Columbia, S.C.)

Auburn (5-5-3, 2-3-0 SEC) vs.
South Carolina (12-0-1, 4-0-1 SEC)
Date: Oct 09, 2009 • Attendance: 827
Weather:

Table with columns: Po ## Player, Sh, SO, G, A, Min. Lists player stats for Auburn.

Goals by period table with columns: 1, 2, OT, Total. Shows 1 goal total.

Table with columns: Po ## Player, Sh, SO, G, A, Min. Lists player stats for South Carolina.

Totals table for South Carolina: 17 8 1 0

Goalkeepers table with columns: ##, Min, GA, Saves. Lists Amy Howard.

Goalkeepers table with columns: ##, Min, GA, Saves. Lists Mollie Patton.

Saves by period table with columns: 1, 2, OT, Total. Shows 7 saves total.

Saves by period table with columns: 1, 2, OT, Total. Shows 3 saves total.

Corner kicks table with columns: 1, 2, OT, Total. Shows 2 total corner kicks.

Fouls table with columns: 1, 2, OT, Total. Shows 15 total fouls.

Scoring summary:

Table with columns: No., Time Team, Goal scorer, Assist, Description. Lists Sam Diaz-Matosas (3).

Cautions and ejections:

YC-AU #8 (47:39); YC-SC #21 (66:41); YC-SC #23 (74:59)

Stadium: Stone Stadium

Officials: Referee: Robb Mann; Asst. Referee: Casey Black; Michael Sabatelle;

Alt. Official: Georges-Frantz Louis; Timekeeper: Sarah Stephens; Scorer: Miquel Jacobs;

Offsides: Auburn 2, South Carolina 2.

Official's signature

GAME 15 - #23 Georgia (1-2)

Soccer Box Score (Final)

2009 South Carolina Women's Soccer
#5 South Carolina vs #16 Georgia (Oct 16, 2009 at Athens, Ga.)

South Carolina 13-1-1 (4-1-1) vs.
Georgia 12-2-1 (5-2-0)
Date: Oct 16, 2009 • Attendance: 1715
Weather:

Table with columns: Po ## Player, Sh, SO, G, A, Min. Lists player stats for South Carolina.

Goals by period table with columns: 1, 2, Total. Shows 2 goals total.

Table with columns: Po ## Player, Sh, SO, G, A, Min. Lists player stats for Georgia.

Goalkeepers table with columns: ##, Min, GA, Saves. Lists Michelle Betos.

Goalkeepers table with columns: ##, Min, GA, Saves. Lists Mollie Patton.

Saves by period table with columns: 1, 2, Total. Shows 12 saves total.

Saves by period table with columns: 1, 2, Total. Shows 7 saves total.

Corner kicks table with columns: 1, 2, Total. Shows 5 total corner kicks.

Fouls table with columns: 1, 2, Total. Shows 4 total fouls.

Scoring summary:

Table with columns: No., Time Team, Goal scorer, Assist, Description. Lists Kayla Grimsley (8) and Carrie Patterson (7).

Cautions and ejections:

Stadium: UGA Soccer Stadium

Officials: Referee: Ted Unkel; Asst. Referee: Rob Mauws; Kirt Hinkle; Alt. Official: Will Whitlow;

Timekeeper: Patrick Felton; Scorer: Kate Burkholder;

Offsides: South Carolina 1, Georgia 3.

Official's signature



GAME 16 - Tennessee (2-1)

GAME 17

Soccer Box Score (Final)

2009 South Carolina Women's Soccer

#5 South Carolina vs Tennessee (Oct 18, 2009 at Knoxville, Tenn.)

South Carolina (14-1-1, 6-1-1 SEC) vs.

Tennessee (7-6-3, 3-3-2 SEC)

Date: Oct 18, 2009 • Attendance: 1332

Weather: 50 degrees and partly cloudy, wind N at 9 mph

Goals by period	1	2	Total
South Carolina	1	1	2
Tennessee	0	1	1

South Carolina

Po	#	Player	Sh	SO	G	A	Min
gk	29	Mollie Patton	-	-	-	-	90
d	3	Sam Diaz-Matosas	-	-	-	-	90
f	4	Kayla Grimsley	7	3	1	1	82
m	5	Kim Miller	1	-	-	-	75
d	7	Blakely Mattern	1	-	-	-	90
f	12	Shannon Bigbie	1	-	-	-	65
m	19	Korney Rhoades	1	-	-	-	55
m	16	Lindsay Small	3	2	1	-	82
d	20	Ellen Fahey	-	-	-	-	90
d	21	Brittany Rhoades	-	-	-	-	79
f	27	Brooke Jacobs	1	-	-	-	76
-- Substitutes --							
	8	Christine Watts	-	-	-	-	10
	9	Maria Petroni	-	-	-	-	8
	10	Natalie Aaron	-	-	-	-	3
	14	Lolly Holland	-	-	-	-	16
	19	Kira Campbell	1	-	-	-	46
	23	Kacie Brewer	-	-	-	-	11
	25	Maddy Kill	-	-	-	-	22
Totals			16	5	2	1	

#	Goalkeepers	Min	GA	Saves
29	Mollie Patton	90:00	1	6

Shots by period	1	2	Total
South Carolina	9	7	16
Tennessee	8	11	19

Corner kicks	1	2	Total
South Carolina	5	1	6
Tennessee	4	4	8

Scoring summary:

No.	Time	Team	Goal scorer	Assist	Description
1.	32:19	SC	Kayla Grimsley (9)	(unassisted)	Long run up right wing, beat Baird at touch an 6 yds.
2.	55:38	SC	Lindsay Small (4)	Kayla Grimsley	Cross from #4, header by #16 from 6 yards o middle
3.	69:38	TN	Mick Imgram (10)	(unassisted)	Free kick from left wing about 16 yards

Cautions and ejections:

YC-SC #12 (86:59)

Stadium: Regal Soccer Stadium

Officials: Referee: Timothy Debysingh; Asst. Referee: Chad Collins; Chip Fuller;

Alt. Official: Michael Fitzpatrick; Timekeeper: Craig Fain; Scorer: Brian Davis;

Offsides: South Carolina 2, Tennessee 1.

Official's signature

GAME 18

GAME 19



#0 Alex Holland
GK • 5-7 • Fr.

Bests	Season	Career
Saves:	N/A	Same
Minutes:	N/A	Same

Career Statistics

YEAR	GP/GS	MIN	SVS	GA	GAA	SHO
2009	0-0	0	0	0	0	0
TOTALS	0-0	0	0	0	0	0



#1 Roya Mojarab
GK • 5-4 • So.

Bests	Season	Career
Saves:	2, (9/20)	Same
Minutes:	30:28, (9/20)	Same

Career Statistics

YEAR	GP/GS	MIN	SVS	GA	GAA	SHO
2008	1-0	13:07	0	0	0.00	0
2009	1-0	30:28	2	1	2.95	0
TOTALS	2-0	43:35	2	1	2.06	0



#2 Megan Fligg
D • 5-6 • Fr.

Bests	Season	Career
Goals:	1, (9/6)	Same
Assists:	N/A	Same
Points:	2, (9/6)	Same
Shots:	1, 2x* (9/6)	Same
SOG:	1, (9/6)	Same

Career Statistics

YEAR	GP/GS	SH	G	A	PTS	GWG
2009	12-1	2	1	0	2	0
TOTALS	12-1	2	1	0	2	0



#3 Samantha Diaz-Matosas
D • 5-7 • Sr.

Bests	Season	Career
Goals:	1, 3x* (10/9)	1, 8x* (10/9)
Assists:	1, 4x* (10/11)	1, 12x* (10/11)
Points:	2, 3x* (10/9)	3, (10/12/08)
Shots:	4, (10/9)	Same
SOG:	2, 2x* (10/11)	3, 3x* (9/9/06)

Career Statistics

YEAR	GP/GS	SH	G	A	PTS	GWG
2006	22-22	30	2	4	8	0
2007	23-18	9	1	2	4	0
2008	22-22	16	2	2	6	2
2009	16-15	19	3	4	10	2
TOTALS	83-77	74	8	12	28	4

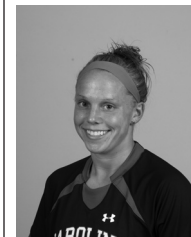


#4 Kayla Grimsley
F • 5-4 • So.

Bests	Season	Career
Goals:	1, 9x* (10/18)	2, (10/3/08)
Assists:	1, 4x* (10/18)	1, 10x* (10/18)
Points:	3, (10/18)	4, (10/3/08)
Shots:	7, (10/18)	Same
SOG:	3, (10/18)	3, 2x* (10/18)

Career Statistics

YEAR	GP/GS	SH	G	A	PTS	GWG
2008	22-20	37	8	6	22	2
2009	16-16	31	9	4	22	2
TOTALS	38-36	68	17	10	44	4



#5 Kim Miller
M • 5-2 • Sr.

Bests	Season	Career
Goals:	1, 2x* (8/30)	2, (10/26/08)
Assists:	2, 2x* (9/11)	2, 2x* (9/11)
Points:	2, 4x* (9/11)	4, (10/26/08)
Shots:	3, 2x* (10/4)	4, (10/28/07)
SOG:	2, (9/6)	2, 8x* (9/6)

Career Statistics

YEAR	GP/GS	SH	G	A	PTS	GWG
2006	22-20	9	0	2	2	0
2007	23-23	17	1	1	3	1
2008	22-22	36	4	3	11	2
2009	16-16	21	2	8	12	1
TOTALS	83-81	83	7	14	28	4



#7 Blakely Mattern
D • 5-9 • Sr.

Bests	Season	Career
Goals:	2, 2x* (10/11)	Same
Assists:	1, (9/20)	1, 6x* (9/20)
Points:	4, 2x* (10/11)	Same
Shots:	3, 2x* (9/11)	4, 2x* (11/5/08)
SOG:	3, (9/6)	Same

Career Statistics

YEAR	GP/GS	SH	G	A	PTS	GWG
2006	22-22	28	3	3	9	2
2007	23-23	18	2	2	6	0
2008	22-22	20	4	0	8	0
2009	16-16	13	6	1	13	3
TOTALS	83-83	79	15	6	36	5



#8 Christine Watts
M • 5-6 • Fr.

Bests	Season	Career
Goals:	1, 2x* (9/27)	Same
Assists:	1, (9/11)	Same
Points:	2, 2x* (9/27)	Same
Shots:	3, 2x* (9/27)	Same
SOG:	2, 2x* (9/27)	Same

Career Statistics

YEAR	GP/GS	SH	G	A	PTS	GWG
2009	16-0	16	2	1	5	1
TOTALS	16-0	16	2	1	5	1



#9 Maria Petroni
F • 5-10 • So.

Bests	Season	Career
Goals:	1, (9/6)	Same
Assists:	1, (9/20)	1, 3x* (9/20)
Points:	2, (9/6)	Same
Shots:	1, 3x* (9/20)	2, 2x* (10/3/08)
SOG:	1, 2x* (9/6)	1, 5x* (9/6)

Career Statistics

YEAR	GP/GS	SH	G	A	PTS	GWG
2008	17-7	8	0	2	2	0
2009	13-0	3	1	1	3	0
TOTALS	30-7	11	1	3	5	0



#10 Natalie Aaron
F • 5-10 • So.

Bests	Season	Career
Goals:	1, (9/20)	1, 3x* (9/20)
Assists:	1, (9/20)	1, 2x* (9/20)
Points:	3, (9/20)	Same
Shots:	2, (9/20)	5, (10/5/08)
SOG:	1, 2x* (10/11)	4, (10/17/08)

Career Statistics

YEAR	GP/GS	SH	G	A	PTS	GWG
2008	21-2	27	2	1	5	1
2009	15-0	8	1	1	3	0
TOTALS	36-2	35	3	2	8	1



#11 Idana DeCecco
D • 5-6 • So.

Bests	Season	Career
Goals:	N/A	1, (9/14/08)
Assists:	N/A	Same
Points:	N/A	2, (9/14/08)
Shots:	N/A	1, 2x* (10/10/08)
SOG:	N/A	1, (9/14/08)

Career Statistics

YEAR	GP/GS	SH	G	A	PTS	GWG
2008	15-0	2	1	0	2	0
2009	2-0	0	0	0	0	0
TOTALS	17-0	2	1	0	2	0



#12 Shannon Bigbie
F • 5-6 • Sr.

Bests	Season	Career
Goals:	1, (9/11)	1, 3x* (9/11)
Assists:	1, (9/25)	1, 6x* (9/25)
Points:	2, (9/11)	2, 3x* (9/11)
Shots:	2, (10/16)	5, (9/9/07)
SOG:	2, (10/16)	4, (9/9/07)

Career Statistics

YEAR	GP/GS	SH	G	A	PTS	GWG
2006	22-5	0	0	0	0	0
2007	23-8	13	1	1	3	1
2008	22-20	24	1	4	6	0
2009	14-12	8	1	1	3	1
TOTALS	81-45	45	3	6	12	2



#13 Jocelyn Spurrier
D • 5-8 • R-Fr.

Bests	Season	Career
Goals:	N/A	Same
Assists:	N/A	Same
Points:	N/A	Same
Shots:	N/A	Same
SOG:	N/A	Same

Career Statistics

YEAR	GP/GS	SH	G	A	PTS	GWG
2008	REDSHIRTED					
2009	0-0	0	0	0	0	0
TOTALS	0-0	0	0	0	0	0



#14 Lolly Holland
M • 5-4 • So.

Bests	Season	Career
Goals:	1, (9/20)	Same
Assists:	N/A	Same
Points:	2, (9/20)	Same
Shots:	4, (9/13)	Same
SOG:	1, 2x* (9/20)	Same

Career Statistics

YEAR	GP/GS	SH	G	A	PTS	GWG
2008	15-0	1	0	0	0	0
2009	12-0	7	1	0	2	0
TOTALS	27-0	8	1	0	2	0



#15 Kortney Rhoades
M • 5-4 • So.

Bests	Season	Career
Goals:	1, (9/25)	1, 4x* (9/25)
Assists:	1, 2x* (9/20)	2, (9/12/08)
Points:	2, (9/25)	2, 5x* (9/25)
Shots:	3, (9/13)	5, 2x* (10/5/08)
SOG:	2, 3x* (10/11)	2, 5x* (10/11)

Career Statistics

YEAR	GP/GS	SH	G	A	PTS	GWG
2008 (SJ)	17-13	34	3	4	10	1
2009	16-15	17	1	2	4	0
TOTALS	33-28	51	4	6	14	1



#16 Lindsay Small
M • 5-7 • Sr.

Bests	Season	Career
Goals:	1, 3x* (10/2)	1, 6x* (10/2)
Assists:	1, 2x* (9/25)	1, 3x* (9/25)
Points:	2, 3x* (10/2)	3, (9/19/08)
Shots:	5, 2x* (10/2)	6, 2x* (10/17/08)
SOG:	3, 2x* (10/2)	Same

Career Statistics

YEAR	GP/GS	SH	G	A	PTS	GWG
2006	16-0	4	0	0	0	0
2007	23-0	5	0	0	0	0
2008	22-22	35	3	1	7	2
2009	16-16	24	4	2	10	3
TOTALS	77-38	68	7	3	17	5

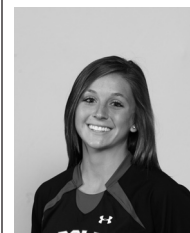


#17 Maggie Blackwell
D • 5-6 • R-So.

Bests	Season	Career
Goals:	N/A	Same
Assists:	N/A	Same
Points:	N/A	Same
Shots:	N/A	Same
SOG:	N/A	Same

Career Statistics

YEAR	GP/GS	SH	G	A	PTS	GWG
2007	REDSHIRTED					
2008	0-0	0	0	0	0	0
2009	2-0	0	0	0	0	0
TOTALS	2-0	0	0	0	0	0



#18 Ali Glemser
F • 5-3 • R-Fr.

Bests	Season	Career
Goals:	N/A	Same
Assists:	N/A	Same
Points:	N/A	Same
Shots:	2, (9/20)	Same
SOG:	1, 4x* (9/20)	Same

Career Statistics

YEAR	GP/GS	SH	G	A	PTS	GWG
2008	REDSHIRTED					
2009	12-0	6	0	0	0	0
TOTALS	12-0	6	0	0	0	0



#19 Kira Campbell
M • 5-8 • So.

Bests	Season	Career
Goals:	N/A	Same
Assists:	N/A	1, (9/5/08)
Points:	N/A	1, (9/5/08)
Shots:	4, (9/11)	Same
SOG:	2, (9/11)	Same

Career Statistics

YEAR	GP/GS	SH	G	A	PTS	GWG
2008	22-12	12	0	1	1	0
2009	14-8	10	0	0	0	0
TOTALS	36-20	22	0	1	1	0

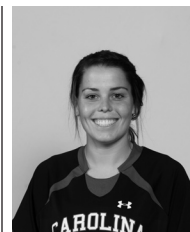


#20 Ellen Fahey
D • 5-7 • So.

Bests	Season	Career
Goals:	N/A	Same
Assists:	1, 4x* (9/18)	Same
Points:	1, 4x* (9/18)	Same
Shots:	2, (10/4)	Same
SOG:	1, 2x* (10/9)	1, 3x* (10/9)

Career Statistics

YEAR	GP/GS	SH	G	A	PTS	GWG
2008	22-22	1	0	0	0	0
2009	16-16	3	0	4	4	0
TOTALS	38-38	4	0	4	4	0

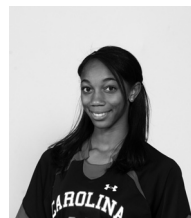


#21 Brittney Rhoades
D • 5-3 • Jr.

Bests	Season	Career
Goals:	N/A	Same
Assists:	N/A	2, (9/26/08)
Points:	N/A	2, (9/26/08)
Shots:	1, 3x* (9/6)	3, (10/19/07)
SOG:	1, 2x* (9/6)	3, (10/19/07)

Career Statistics

YEAR	GP/GS	SH	G	A	PTS	GWG
2007	23-22	5	0	4	4	0
2008	22-22	15	0	5	5	0
2009	16-15	4	0	0	0	0
TOTALS	61-59	24	0	9	9	0



#22 Dani Henry
D • 5-4 • R-Fr.

Bests	Season	Career
Goals:	N/A	Same
Assists:	N/A	Same
Points:	N/A	Same
Shots:	1, 3x* (9/20)	Same
SOG:	N/A	Same

Career Statistics

YEAR	GP/GS	SH	G	A	PTS	GWG
2008	REDSHIRTED					
2009	11-0	3	0	0	0	0
TOTALS	11-0	3	0	0	0	0



#23 Kacie Brewer
F • 5-5 • Sr.

Bests	Season	Career
Goals:	1, (9/20)	1, 2x* (9/20)
Assists:	1, (9/13)	1, 2x* (9/13)
Points:	2, (9/20)	2, 2x* (9/20)
Shots:	3, (9/20)	5, (9/12/07)
SOG:	3, (9/20)	3, 2x* (9/20)

Career Statistics

YEAR	GP/GS	SH	G	A	PTS	GWG
2006	5-0	1	0	0	0	0
2007	13-0	10	1	1	3	0
2008	9-0	3	0	0	0	0
2009	16-1	7	1	1	3	0
TOTALS	43-1	21	2	2	6	0



#25 Maddy Kill
M • 5-7 • Jr.

Bests	Season	Career
Goals:	N/A	1, 2x* (10/7/07)
Assists:	N/A	2, 3x* (8/30/08)
Points:	N/A	2, 4x* (8/30/08)
Shots:	1, (8/27)	4, 2x* (9/14/08)
SOG:	1, (8/27)	2, 3x* (9/14/08)

Career Statistics

YEAR	GP/GS	SH	G	A	PTS	GWG
2007 (SH)	18-5	20	2	5	9	0
2008 (SH)	18-8	17	0	3	3	0
2009	7-0	1	0	0	0	0
TOTALS	43-13	38	2	8	12	0



#26 Rae Wilson
F • 5-5 • Fr.

Bests	Season	Career
Goals:	N/A	Same
Assists:	N/A	Same
Points:	N/A	Same
Shots:	N/A	Same
SOG:	N/A	Same

Career Statistics

YEAR	GP/GS	SH	G	A	PTS	GWG
2009	4-0	0	0	0	0	0
TOTALS	4-0	0	0	0	0	0



#27 Brooke Jacobs
F • 5-3 • Jr.

Bests	Season	Career
Goals:	1, 3x* (10/4)	1, 7x* (10/4)
Assists:	1, 2x* (9/20)	2, (9/23/07)
Points:	2, 3x* (10/4)	3, (11/14/08)
Shots:	5, (9/13)	Same
SOG:	3, 2x* (10/16)	3, 4x* (10/16)

Career Statistics

YEAR	GP/GS	SH	G	A	PTS	GWG
2007	15-4	11	1	3	5	1
2008	21-15	38	3	4	10	1
2009	16-15	34	3	2	8	1
TOTALS	52-34	83	7	9	23	3



#28 Brittany DeWitt
D • 5-6 • Fr.

Bests	Season	Career
Goals:	N/A	Same
Assists:	N/A	Same
Points:	N/A	Same
Shots:	N/A	Same
SOG:	N/A	Same

Career Statistics

YEAR	GP/GS	SH	G	A	PTS	GWG
2009	4-0	0	0	0	0	0
TOTALS	4-0	0	0	0	0	0



#29 Mollie Patton
GK • 5-7 • R-Jr.

Bests	Season	Career
Saves:	6, 3x* (9/13)	8, (9/14/08)
Minutes:	110:00, (10/4)	110:00, 5x* (10/4)

Career Statistics

YEAR	GP/GS	MIN	SVS	GA	GAA	SHO
2006	REDSHIRTED					
2007	0-0	0	0	0	0	0
2008	22-22	2053	58	22	0.96	7
2009	16-16	1437	51	5	0.31	11
TOTALS	38-38	3490	109	27	0.69	18



#35 Darien Vercillo
GK • 5-6 • Fr.

Bests	Season	Career
Saves:	N/A	Same
Minutes:	N/A	Same

Career Statistics

YEAR	GP/GS	MIN	SVS	GA	GAA	SHO
2009	0-0	0	0	0	0	0
TOTALS	0-0	0	0	0	0	0



Shelley Smith Ninth Season

Shelley Smith enters her ninth season at the helm of the USC women's soccer program and looks to continue building upon the success that she has brought to the program after taking the team to the first back-to-back NCAA Tournament appearances in program history.

Smith has cemented Carolina's position as a conference title contender and player on the national stage after guiding the Gamecocks in 2008 to their second consecutive NCAA Tournament bid and third consecutive SEC Tournament bid, both program firsts. The Gamecocks went 11-7-4 overall and earned five SEC wins for the third year in a row with only one senior on the roster. Respected as a top defensive team, the Gamecocks finished the regular season second in the SEC with eight shutouts and ranked in the top two in every major defensive category including goals allowed, points allowed, shots allowed and shots on goal allowed.

Blakely Mattern and Kayla Grimsley both earned All-SEC honors with Mattern earning her second first team and Grimsley picking up spots on the second team and freshman team. The duo also picked up Soccer Buzz All-Southeast Region honors while Mattern also earned a nod by the NSCAA.

Carolina's success in the classroom continued last season as her squad earned two Academic All-District honors in Mattern and Mollie Patton. Mattern was also named to the Academic All-America first team, making South Carolina one of only four teams in the nation – and the only in the SEC – to have an Academic All-American selected each of the past four seasons. Her team was also honored with its seventh NSCAA Team Academic Award. The team had 11 players named to the SEC Academic Honor Roll in addition to nine selections to the SEC Freshman Honor Roll. Overall, Smith has coached 131 SEC Academic Honor Roll recipients since coming to USC in 2001.

Smith has coached several top student-athletes at Carolina including Ashley Kirk, USC's first four-time All-SEC honoree, Carolina's first All-American in three-time All-SEC selection Blakely Mattern and two-time All-SEC performers Melinda Carter, Jessica Julin and Sarah Lentz. Julin is currently the captain of the Finland National Team and Carter played in the WUSA. The Gamecocks have earned 20 All-SEC honors in the last eight years.

In her first season as head coach at Carolina (2001), the Gamecocks were the third most improved team in the nation with an 8-7-3 overall record. Carolina also had one of the school's best home records, going 5-3 at Stone Stadium, allowing opponents to score only four goals in eight matches.

The success continued for USC in 2002 with 13 wins in Smith's second season. The year was highlighted with USC's first ever victories against Florida and Kentucky. Smith also led her team to ties against 2002 SEC champion Auburn and Eastern Division champion Tennessee.

Smith led the Gamecocks to another successful season in 2003 with 10 wins including a USC record eight-game unbeaten streak as well as a 6-2-1 record at home in Stone Stadium.

The 2004 season featured a win over No. 7 Clemson, the Gamecocks' first win over a ranked opponent since 1998, as well as a 6-3 mark in non-conference action. Ashley Kirk also became the first freshman soccer player in school history to be named SEC Freshman of the Year. In addition, Carolina set a school record for a home game-winning streak with six consecutive wins.

Following an injury filled 2005 season, the program took a big step forward in 2006 as USC went undefeated at home for the first time in school history with an 8-0-3 mark at Stone Stadium. The team's cumulative goals against average of 0.69 was the lowest ever tallied at Carolina. The season culminated with the Gamecocks advancing to the SEC Tournament semifinals for the first time in Carolina history, as Blakely Mattern became the team's first Freshman All-America selection since 1998.

Smith directed the 2007 Gamecocks to arguably the best season in school history, tying the school record with 14 victories and advancing to the NCAA Tournament for only the second time in program history. Carolina posted a 14-6-3 overall record including a 5-4-2 mark in the SEC after beginning the season by becoming the first team ever to knock off defending national champion and top-ranked North Carolina in a season opening game at Fetzer Field in Chapel Hill. The Gamecocks ran to a 7-0-0 start to the season – program bests for start to a season and winning streak – and peaked at No. 7 in the national polls. For the second consecutive season South Carolina advanced to the SEC Tournament semifinals after knocking off Tennessee for the first time in program history and earned the school's first bid to the NCAA Tournament since 1998. Blakely Mattern became the first sophomore to ever earn SEC Defensive Player of the Year honors in addition to becoming the first All-American in South Carolina history.

In 12 years as a head coach, Smith has compiled an overall record of 122-97-24. Besides her collegiate coaching, Smith was a member of the Region III ODP staff for the past five years, as well as an assistant for the '90 Regional Team. Smith also was a member of the 2003 U-14 National Camp staff for U.S. Soccer.

With a background in both semi-professional and collegiate soccer, Smith previously served as head coach at Rhode Island from 1997-2000. The 2000 NSCAA Northeast Region Coach of the Year, Smith rebuilt the URI women's soccer program, compiling a 41-35-2 overall record. Smith took a

program that was 2-16 her first year to 12-7-1 in her second season, marking the eighth-most improved won-lost record for a team in NCAA history. In 2000, Smith coached URI to its best record ever of 15-4-1, while reaching the Atlantic 10 Semifinals, a first in URI history.

Smith was nominated for the 2000 National Coach of the Year. The New England Women's Soccer Intercollegiate Soccer Association (NEWISA) also named her its Division I Coach of the Year in 2000. She was the 1998 Atlantic 10 Coach of the Year as well.

In addition to her experience as a coach, Smith brings experience from the semi-professional level. From 1996-2000, Smith played for the Boston Renegades in the W-1 League. Smith was captain in 2000 as she led Boston to the semifinals in the W-1 Championship. The Renegades reached the finals in 1998. Smith also had the opportunity to play overseas in 1994 as a member of the Sheffield United Women's Football Club in England.

Smith, a 1993 graduate of the University of Vermont with a degree in nutritional science, received her teacher's certificate from the same institution in 1995. Smith started all four years for the Catamounts. Her primary positions were center midfielder and central defender. She was a regional All-American in both 1992 and '93 in addition to being named First Team All-North Atlantic Conference each year from 1991-93. During her freshman year, the squad won the ECAC Tournament. Vermont was one of the first programs to offer women's soccer as a varsity sport and it competed on a national level. Smith was named to Vermont's Athletic Hall of Fame in the summer of 2004.

Smith worked as an assistant coach at Dartmouth College from 1995-97. The Big Green made the NCAA Tournament in her second season with the program.

Smith is married to USC associate head coach Jamie Smith. They are the proud parents of two sons, Braden James, born on Nov. 25, 2003 and Evan Addison born on Jan. 6, 2006.

Smith has her USSF B license and the NCAA Advanced National Diploma. She is currently a member of the USYSA Regional Olympic Development Staff.

Year-By-Year Results		
Year	Record	School
1997	2-16	Rhode Island
1998	12-7-1	Rhode Island
1999	12-8	Rhode Island
2000	15-4-1	Rhode Island
2001	8-7-3	South Carolina
2002	13-6-2	South Carolina
2003	10-8-3	South Carolina
2004	8-10-2	South Carolina
2005	6-12	South Carolina
2006	11-6-5	South Carolina
2007	14-6-3	South Carolina
2008	11-7-4	South Carolina
2009	14-1-1	South Carolina