



SOUTH CAROLINA

2009 WOMEN'S SOCCER

Contact: Miquel Jacobs • Office: (803) 777-1516 • Cell: (803) 530-5727 • Fax: (803) 777-2967
 Email: jacobsm2@mailbox.sc.edu • Roost Building B, 1322 Heyward Street, Columbia, SC 29208
 www.GamecocksOnline.com

2009 Schedule/Results

DAY	DATE	OPPONENT	TIME/RESULT
Fri.	Aug. 21	Mexican National Team	W, 2-0
Thur.	Aug. 27	College of Charleston	W, 2-0
Sun.	Aug. 30	Western Carolina	W, 2-0
Fri.	Sept. 4	Louisville (1)	W, 3-0
Sun.	Sept. 6	Cincinnati (1)	W, 4-0
Fri.	Sept. 11	Clemson (2)	W, 5-0
Sun.	Sept. 13	UNC Wilmington	W, 2-0
Fri.	Sept. 18	#17 UCF	W, 1-0
Sun.	Sept. 20	South Alabama	W, 6-1
Fri.	Sept. 25	Vanderbilt*	W, 2-1
Sun.	Sept. 27	Kentucky*	W, 1-0
Fri.	Oct. 2	Mississippi*	W, 1-0
Sun.	Oct. 4	Mississippi State*	T, 1-1 (2OT)
Fri.	Oct. 9	Auburn*	W, 1-0 (OT)
Sun.	Oct. 11	Alabama*	W, 2-0
Fri.	Oct. 16	#23 Georgia*	L, 1-2
Sun.	Oct. 18	Tennessee*	W, 2-1
Thur.	Oct. 22	Arkansas*	W, 2-0
Sun.	Oct. 25	#17 LSU* (ESPNU)	L, 0-1
Fri.	Oct. 30	#10 Florida*	L, 0-3
Wed.	Nov. 4	(3) SEC Quarterfinal - #25 Georgia	W, 3-2
Fri.	Nov. 6	(3) SEC Semifinal - #8 Florida	W, 1-0
Sun.	Nov. 8	(3) SEC Final - #13 LSU (ESPNU)	T, 1-1 (8-7 pks)
Fri.	Nov. 13	(4) Davidson	W, 4-0
Sun.	Nov. 15	(4) #12 Rutgers	W, 1-0
Fri.	Nov. 20	(5) #14 Wake Forest	7 p.m.

Game 25

1-Louisville Tournament, Louisville, Ky.
 2-Carolina Cup, Clemson, S.C.
 3-Orange Beach, Ala.
 4-NCAA First/Second Round, Columbia, S.C.
 5-NCAA Third Round, Columbia, S.C.

#8 South Carolina To Host #14 Wake Forest In NCAA Round of 16



Eugene E. Stone III Stadium
 Columbia, S.C.
 Nov. 20, 2009 • 7 p.m.

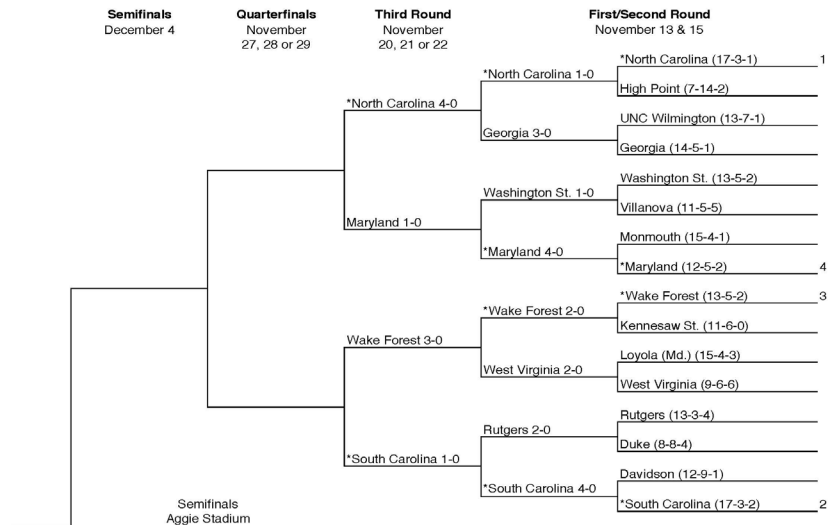


#8 South Carolina
 (19-3-2, 7-3-1 SEC)

#14 Wake Forest
 (15-5-2, 5-3-2 ACC)



2009 NCAA Division I Women's SOCCER CHAMPIONSHIP



South Carolina Probable Starters

#	Name	Pos.	Class	GP-GS	G	A	P	Shots	Notes
21	Brittany Rhoades	D	Jr.	24-23	0	0	0	5	2007 Freshman All-American is team's top lockdown defender
7	Blakely Mattern	D	Sr.	24-24	7	1	15	21	Lowe's Senior CLASS Award finalist with another strong season
20	Ellen Fahey	D	So.	23-23	0	4	4	3	Physical center back has started every game of her career
12	Shannon Bigbie	D	Sr.	22-20	1	1	3	8	Solid senior plays up top and on the backline
5	Kim Miller	M	Sr.	24-24	3	11	17	31	Team engine has five game winning assists this season
16	Lindsay Small	M	Sr.	24-24	4	3	11	38	Consistent player scores and creates as defensive mid
15	Kortney Rhoades	M	So.	24-23	3	2	8	26	Transfer hit GWG to defeat Georgia in SEC Quarters
3	Samantha Diaz-Matosas	F	Sr.	24-24	4	5	13	36	Athletic player can play up top or back
4	Kayla Grimsley	F	So.	24-24	13	7	33	43	One goal shy of tying USC single-season record
27	Brooke Jacobs	F	Jr.	24-23	6	3	15	42	Has scored a first half goal in three straight NCAA games

No.	Name	Pos.	Yr.	Min.	GA	GAA.	Svs.	W-L	SO	Notes
29	Mollie Patton	GK	R-Jr.	2177:19	12	0.50	62	19-3-2	15	Third in the nation with 15 shutouts; ninth in GAA



2009 NUMERICAL ROSTER

No.	Name	Pos.	Ht.	Cl/Exp.	Hometown (High School)
0	Alex Holland	GK	5-7	Fr./HS	Cary, Ill. (Cary-Grove)
1	Roya Mojarab	GK	5-4	Soph./1L	Tacoma, Wash. (Curtis)
2	Megan Fligg	D/F	5-6	Fr./HS	Gainesville, Ga. (Chestatee)
3	Samantha Diaz-Matosas	D	5-7	Sr./3L	Lilburn, Ga. (Brookwood)
4	Kayla Grimsley	M/F	5-4	Soph./1L	Lakeland, Fla. (George W. Jenkins)
5	Kim Miller	M	5-2	Sr./3L	Farmingdale, N.Y. (Famingdale)
7	Blakely Mattern	D	5-9	Sr./3L	Simpsonville, S.C. (JL Mann)
8	Christine Watts	M	5-6	Fr./HS	Duluth, Ga. (Peachtree Ridge)
9	Maria Petroni	F	5-10	Soph./1L	Flowery Branch, Ga. (Buford)
10	Natalie Aaron	F	5-5	Soph./1L	Brentwood, Tenn. (Battle Ground Academy)
11	Idana DeCecco	D	5-6	Soph./1L	Sherwood Park, Alberta (Archbishop Jordan)
12	Shannon Bigbie	F/M	5-6	Sr./3L	Lexington, S.C. (Lexington)
13	Jocelyn Spurrier	D	5-8	R-Fr./HS	Lawrenceville, Ga. (Brookwood)
14	Lolly Holland	M	5-4	Soph./1L	Suwanee, Ga. (South Forsyth)
15	Kortney Rhoades	M	5-4	Soph.TR	Wilmington, Del. (Padua // St. Joseph's)
16	Lindsay Small	M/D	5-7	Sr./3L	Suffield, Conn. (Suffield)
17	Maggie Blackwell	D	5-6	R-Soph./SQ	Marietta, S.C. (Travelers Rest)
18	Ali Glemser	D	5-3	R-Fr./HS	Collierville, Tenn. (Collierville)
19	Kira Campbell	M	5-8	Soph./1L	Lexington, S.C. (Lexington)
20	Ellen Fahey	D	5-7	Soph./1L	Fort Wright, Ky. (Notre Dame Academy)
21	Brittany Rhoades	D	5-3	Jr./2L	Wilmington, Del. (Padua)
22	Dani Henry	F/D	5-4	R-Fr./HS	Avondole, Pa. (Padua)
23	Kacie Brewer	F/D	5-5	Sr./3L	Merritt Island, Fla. (Merritt Island)
25	Maddy Kill	M	5-7	Jr./TR	Marietta, Ga. (Marist School // Seton Hall)
26	Rae Wilson	F	5-5	Fr./HS	Greenville, S.C. (JL Mann)
27	Brooke Jacobs	F	5-3	Jr./2L	Chambersburg, Pa. (Chambersburg Area)
28	Brittany DeWitt	D	5-6	Fr./HS	Greensboro, N.C. (N.C. School of Science & Math)
29	Mollie Patton	GK	5-7	R-Jr./1L	Milford, Ohio (Milford)
32	Aly Shattls	M	5-1	Sr./3L	Huntington, W.Va. (Huntington)
35	Darien Vercillo	GK	5-6	Fr./HS	Yorba Linda, Calif. (Mater Dei)

2009 ALPHABETICAL ROSTER

No.	Name	Pos.	Ht.	Cl/Exp.	Hometown (High School)
10	Natalie Aaron	F	5-5	Soph./1L	Brentwood, Tenn. (Battle Ground Academy)
12	Shannon Bigbie	F/M	5-6	Sr./3L	Lexington, S.C. (Lexington)
17	Maggie Blackwell	D	5-6	R-Soph./SQ	Marietta, S.C. (Travelers Rest)
23	Kacie Brewer	F/D	5-5	Sr./3L	Merritt Island, Fla. (Merritt Island)
19	Kira Campbell	M	5-8	Soph./1L	Lexington, S.C. (Lexington)
11	Idana DeCecco	D	5-6	Soph./1L	Sherwood Park, Alberta (Archbishop Jordan)
28	Brittany DeWitt	D	5-6	Fr./HS	Greensboro, N.C. (N.C. School of Science & Math)
3	Samantha Diaz-Matosas	D	5-7	Sr./3L	Lilburn, Ga. (Brookwood)
20	Ellen Fahey	D	5-7	Soph./1L	Fort Wright, Ky. (Notre Dame Academy)
2	Megan Fligg	D/F	5-6	Fr./HS	Gainesville, Ga. (Chestatee)
18	Ali Glemser	D	5-3	R-Fr./HS	Collierville, Tenn. (Collierville)
4	Kayla Grimsley	M/F	5-4	Soph./1L	Lakeland, Fla. (George W. Jenkins)
22	Dani Henry	F/D	5-4	R-Fr./HS	Avondole, Pa. (Padua)
0	Alex Holland	GK	5-7	Fr./HS	Cary, Ill. (Cary-Grove)
14	Lolly Holland	M	5-4	Soph./1L	Suwanee, Ga. (South Forsyth)
27	Brooke Jacobs	F	5-3	Jr./2L	Chambersburg, Pa. (Chambersburg Area)
25	Maddy Kill	M	5-7	Jr./TR	Marietta, Ga. (Marist School // Seton Hall)
7	Blakely Mattern	D	5-9	Sr./3L	Simpsonville, S.C. (JL Mann)
5	Kim Miller	M	5-2	Sr./3L	Farmingdale, N.Y. (Famingdale)
1	Roya Mojarab	GK	5-4	Soph./1L	Tacoma, Wash. (Curtis)
29	Mollie Patton	GK	5-7	R-Jr./1L	Milford, Ohio (Milford)
9	Maria Petroni	F	5-10	Soph./1L	Flowery Branch, Ga. (Buford)
21	Brittany Rhoades	D	5-3	Jr./2L	Wilmington, Del. (Padua)
15	Kortney Rhoades	M	5-4	Soph.TR	Wilmington, Del. (Padua // St. Joseph's)
32	Aly Shattls	M	5-1	Sr./3L	Huntington, W.Va. (Huntington)
16	Lindsay Small	M/D	5-7	Sr./3L	Suffield, Conn. (Suffield)
13	Jocelyn Spurrier	D	5-8	R-Fr./HS	Lawrenceville, Ga. (Brookwood)
35	Darien Vercillo	GK	5-6	Fr./HS	Yorba Linda, Calif. (Mater Dei)
8	Christine Watts	M	5-6	Fr./HS	Duluth, Ga. (Peachtree Ridge)
26	Rae Wilson	F	5-5	Fr./HS	Greenville, S.C. (JL Mann)

PRONUNCIATIONS

Kira Campbell -- KEER-uh
Idana DeCecco -- id-DAN-uh de-CHECK-oh
 Sam **Diaz-Matosas** -- DIAZ mah-TOE-sas
 Ellen **Fahey** -- FAYE-he
Roya Mojarab -- ROY-ah mo-JAR-uhb
 Darien **Vercillo** -- ver-SILL-oh

**SOUTH CAROLINA
 2009 SEC RANKINGS
 (as of 11/19/09)**

Category	Pl.	No.
Goals	2nd	48
Goals Per Game	3rd	2.00
Goals Allowed	1st	13
GAA	1st	0.53
Assists	3rd	43
Assists Per Game	3rd	1.79
Points	2nd	139
Points Per Game	3rd	5.79
Shots	6th	321
Shots Per Game	9th	13.38
Shot %		.150
Shot on Goal %	1st	.533
Saves	12th	64
Saves Per Game	12th	2.67
Shutouts	1st	15
Shots Allowed	1st	192
SOG Allowed	1st	77
Points Allowed	1st	36
Fouls	10th	194
Corners	3rd	119
Offsides	1st	53
Yellow Cards	T-7th	9

INDIVIDUAL

Name	Category	Pl.	No.
Grimsley	Goals	T-1st	13
	Assists	T-5th	7
	Points	2nd	33
	Points/gm	2nd	1.38
Miller	Assists	2nd	11
	Assists/gm	2nd	0.46
Patton	GAA	1st	0.50
	Shutouts	1st	15
	Save %	2nd	.838
	Saves	12th	62



SEC STANDINGS

EASTERN DIVISION			CONF			ALL		
Team	W-L	Pts	W-L	Pts	W-L	Pct.	W-L	Pct.
Florida	8-1-2	26	16-6-2	.708				
South Carolina	7-3-1	22	19-3-2	.833				
Georgia	7-4-0	21	15-6-1	.705				
Vanderbilt	5-6-0	15	11-8-1	.575				
Tennessee	4-5-2	14	8-9-3	.500				
Kentucky	2-8-1	7	5-10-4	.368				

WESTERN DIVISION			CONF			ALL		
Team	W-L	Pts	W-L	Pts	W-L	Pct.	W-L	Pct.
LSU	8-2-1	25	15-4-5	.729				
Ole Miss	7-2-2	23	13-6-2	.667				
Auburn	6-5-0	18	10-9-3	.523				
Arkansas	2-7-2	8	8-7-4	.526				
Alabama	2-8-1	7	6-11-1	.361				
Mississippi State	1-8-2	5	9-8-2	.526				

Games through November 19

THE SEC IN THE NCAA

Wednesday, November 13

Florida vs. Illinois State (Columbus, Ohio)	UF, 2-0
Ole Miss vs. Washington (Portland, Ore.)	UW, 1-0
South Carolina vs. Davidson (Columbia S.C.)	USC, 4-0
Auburn vs. California (Tallahassee, Fla.)	Cal, 2-1 (OT)
Georgia vs. UNC-Wilmington (Chapel Hill, N.C.)	UGA, 3-0
LSU vs. UAPB (Baton Rouge, La.)	LSU, 7-0

Sunday, November 15

Florida vs. Oregon State (Columbus, Ohio)	OSU, 1-0
South Carolina vs. Rutgers (Columbia S.C.)	USC, 1-0
Georgia vs. North Carolina (Chapel Hill, N.C.)	UNC, 4-0
LSU vs. Texas A&M (Baton Rouge, La.)	A&M, PKs

Friday, November 20

South Carolina vs. Wake Forest (Columbia, S.C.)	7 p.m.
---	--------

All Times Eastern

SEC PRESEASON POLL

EASTERN DIVISION		WESTERN DIVISION	
Florida (11).....	66	LSU (8).....	63
Georgia (1).....	53	Auburn (4).....	58
Tennessee.....	43	Ole Miss.....	43
South Carolina.....	40	Alabama.....	39
Vanderbilt.....	25	Arkansas.....	25
Kentucky.....	19	Mississippi State.....	18

Overall Champion: Florida (11), Auburn (1)

CAROLINA IN THE NCAA TOURNAMENT

South Carolina's won its first NCAA Tournament game last Friday with its 4-0 win against Davidson and advanced to the Round of 16 for the first time by defeating Rutgers 1-0. Playing in its third consecutive tournament and first time as a national seed (No. 2), the Gamecocks improve to 2-2-1 all-time in NCAA Tournament games. The first bid came in a 2-0 loss at Charlotte in 1998 when the Gamecocks went 11-6-1 in the regular season. In 2007, Carolina earned an at-large bid with a 14-6-2 record when the Gamecocks played Duke to a 1-1 draw at Athens, Ga. Duke advanced with a 4-1 edge in penalty kicks. In 2008, South Carolina dropped a 3-2 overtime decision to William & Mary at Durham, N.C.

SCOUTING WAKE FOREST

No. 14 Wake Forest comes into Friday's matchup with a 15-5-2 record after finishing fifth in the unforgiving ACC at 5-3-2. The Demon Deacons posted shutouts in both opening round matches last week, defeating Kennesaw State 2-0 and West Virginia 3-0 at Spry Stadium. The Deacons are led by a pair of senior forwards in Jill Hutchinson (14g, 3a, 31p) and Kaley Fountain (10g, 10a, 30p), but junior midfielder Casey Luckhurst was the star last weekend by scoring her first three career goals. In the net, junior Amanda Barasha sports a 0.70 goals against average with six shutouts in 1278 minutes, and senior Laura Morse has a 0.94 goals against average with three shutouts in 765 minutes.

EARNING 100

South Carolina head coach Shelley Smith earned her 100th victory as head coach of the Gamecocks in Sunday's win against Rutgers. In her ninth season in Columbia, she sports a 100-65-24 record. Her all-time coaching record is 141-100-26 which includes her 41-35-2 record while coaching Rhode Island for four seasons.

SMITH NAMED SEC COACH OF THE YEAR, FOUR GAMECOCKS EARN ALL-SEC HONORS

South Carolina head coach **Shelley Smith** was named SEC Coach of the Year, senior **Blakely Mattern** was named SEC Scholar Athlete of the Year, and four Gamecocks earned All-SEC honors to cap the most successful regular season in program history.

It is the first SEC Coach of the Year honor for Smith, who guided South Carolina to school records for conference (seven) and overall (15) victories this season. The Gamecocks recorded a program-best second place finish in the SEC East and came within one game of winning the overall title.

Mattern and sophomore **Kayla Grimsley** were two of only four unanimous First Team All-SEC selections. Seniors **Kim Miller** and **Samantha Diaz-Matosas** earned their first All-SEC honors after the duo made the second team, as voted by the league's coaches.

SENIOR CLASS SET THE BAR HIGH

The 2009 senior class will leave Columbia as the winningest senior class in program history. Entering weekend play, the group of seniors hold a 55-22-14 (.681) record, the most wins and best win-percentage for a South Carolina senior class. The group of seven has led Carolina to four consecutive SEC tournament appearances, the first SEC title in program history, the first NCAA Tournament national seed in program history and the first NCAA wins in school history.

SOUTH CAROLINA VS. RANKED TEAMS

Date	Opponent	Result	Date	Opponent	Result
9-18-96	#9 Clemson	W, 3-2	10-7-05	#18 Vanderbilt	L, 0-2
10-4-97	at #9 Clemson	L, 0-5	10-29-05	at #16 Florida	L, 0-3
10-26-97	at #9 Florida	L, 2-5	8-25-06	vs. #13 Illinois	L, 0-1
9-11-98	at #17 Georgia	W, 2-0	9-24-06	at #13 Auburn	W, 1-0
10-7-98	#13 Clemson	L, 1-3	9-29-06	#16 Tennessee	T, 0-0 (2OT)
11-5-98	vs. #3 Florida	L, 0-6	10-27-06	#13 Florida	T, 1-1 (2OT)
10-8-99	at #9 Clemson	L, 0-4	9-1-07	at #1 North Carolina	W, 1-0
10-29-99	at #3 Florida	L, 0-5	9-22-07	at #20 Clemson	L, 0-1
9-8-00	at #1 UNC	L, 1-9	9-27-07	at #10 Tennessee	L, 2-3 (OT)
9-12-00	vs. #17 Duke	L, 1-5	10-21-07	#25 Auburn	W, 2-0
10-8-00	at #14 Kentucky	L, 1-5	10-25-07	at #20 LSU	T, 1-1 (2OT)
10-29-00	#16 Florida	L, 0-3	11-2-07	at #22 Florida	L, 0-2
9-30-01	at #20 Florida	L, 0-1	11-7-07	vs. #15 Tennessee	W, 2-0
10-2-01	at #9 Clemson	L, 0-3	11-9-07	vs. #13 Georgia	L, 0-2
10-5-01	#16 Kentucky	L, 0-1	9-14-08	vs. #7 Florida State	T, 3-3 (2OT)
10-21-01	at #25 Tennessee	L, 1-3	10-23-08	#13 LSU	T, 0-0 (2OT)
9-11-02	#18 Clemson	L, 0-1	10-30-08	#7 Florida	L, 0-1
10-20-02	#13 Tennessee	T, 1-1 (2OT)	9-18-09	#17 UCF	W, 1-0
8-29-03	at #20 Clemson	L, 0-1 (OT)	10-16-09	at #23 Georgia	L, 1-2
9-12-03	at #5 Texas A&M	L, 1-2 (OT)	10-25-09	at #14 LSU	L, 0-1
10-3-03	#14 Auburn	T, 0-0 (2OT)	10-30-09	at #10 Florida	L, 0-3
11-1-03	at #10 Florida	L, 0-2	11-04-09	vs. #25 Georgia	W, 3-2
11-7-03	vs. #16 Tennessee	L, 0-1	11-06-09	vs. #8 Florida	W, 1-0
9-12-04	at #4 Virginia	L, 2-5	11-08-09	vs. #13 LSU	T, 1-1
9-15-04	#7 Clemson	W, 2-0	11-20-09	#12 Rutgers	W, 1-0
10-3-04	#19 Tennessee	L, 1-3			
10-29-04	#18 Florida	L, 1-2 (2OT)			
10-2-05	at #20 Tennessee	L, 1-2			

Overall: 11-34-8 **vs. Top 10:** 4-13-1
Home: 5-8-5 **Road:** 3-21-1 **Neutral:** 3-5-2



CAROLINA'S RECORD WHEN ...

Overall	19-3-2
Home	11-0-0
Away	4-3-1
Neutral	4-0-1
Leading At The Half	13-1-0
Tied At The Half	5-0-1
Trailing At The Half	1-2-1
Scores In The First Half	14-1-0
Overtime Games	1-0-2
On Television	1-2-1
In Tournaments	8-0-1
Against 2008 NCAA Participants	7-3-1
Vs. Top 25	4-3-1
Longest Winning Streak	W11
Longest Unbeaten Streak	U14
Active Streak	U5
Against Opponents	
USC Scores First	18-1-1
Opponent Scores First	1-2-1
Scores 1 Goal	6-1-2
Scores 2 Goals	7-0-0
Scores 3+ Goals	6-0-0
Opponent Scores 1 Goal	3-1-2
Opponent Scores 2 Goals	1-1-0
Opponent Scores 3+ Goals	0-1-0
Is Shutout	0-2-0
Shut Out Opponent	15-0-0
Takes More Shots	16-1-2
Opponent Takes More Shots	3-2-0
Time	
Day Games	8-1-2
Night Games	11-2-0
Mondays	0-0-0
Wednesdays	1-0-0
Thursdays	2-0-0
Fridays	8-2-0
Saturdays	0-0-0
Sundays	8-1-2
August	2-0-0
September	8-0-0
October	5-3-1
November	4-0-1
After A Win	14-2-2
After A Loss	2-1-0
After A Tie	2-0-0
Wearing White	13-2-0
Wearing Garnet	0-0-2
Wearing Black	6-1-0

THE BEST SEASON EVER

With a 18-3-2 record and 7-3-1 SEC record, the Gamecocks have already earned program bests for overall and conference wins in a season. The Gamecocks finished a program-best second in the SEC East and came within one game of the winning the SEC title.

JACOBS RELISHES POSTSEASON PLAY

Junior **Brooke Jacobs** annually saves some of her best games for the NCAA Tournament and has scored a first half goal in each of Carolina's last three tournament games. The Chambersburg, Pa., native had a breakout game against William & Mary in the 2007 first round by knocking in Carolina's first goal and adding an assist. The striker matched the effort last Friday by scoring the first goal of the game and adding an assist against Davidson. She then scored a first half goal to defeat Rutgers on Sunday. Her eight points in NCAA matches are a school record.

GRIMSLEY JOINS ELITE COMPANY

Sophomore **Kayla Grimsley** became just the fifth player in South Carolina history to register a 10-goal season after scoring in the 63rd minute against Arkansas. Grimsley joins **Jennie Ondo, Angela Austin, Debbie Smith** and **Darcel Mollon** as players to reach the plateau. She also needs one goal to tie Ondo for the single-season goals record (14).

GETTING THE W'S

South Carolina's 19 wins are tied for third in the country behind the top two teams in this week's national polls: #1 Stanford (22) and #2 Portland (20). UCLA, North Carolina and Notre Dame are the teams that have 19 wins this season along with the Gamecocks.

HOME AT THE STONE

South Carolina has been nearly unstoppable at Stone Stadium the past three seasons, posting a 33-2-5 record at home since 2006. The streak included a 15-game unbeaten streak from Aug. 31, 2006-Oct. 5, 2007 and a 13-game unbeaten streak at "The Graveyard" from Oct. 19, 2007-Oct. 23, 2008. The lone blemishes on the record are a double-overtime loss to Vanderbilt (Oct. 7, 2007) and a loss to #7 Florida (Oct. 30, 2008). The season opening win against College of Charleston was **Coach Shelley Smith's** 50th win at Stone Stadium. Carolina is a perfect 10-0-0 at Stone Stadium this season.

PATTON SETS THE SEC RECORD

Mollie Patton recently set the SEC record for consecutive shutouts when she notched seven straight, passing the previous record of six held by Kentucky's Carrie Kuhnell (1995) and Auburn's Megan Rivera (2003). She also set a new South Carolina single-season shutout record when she grabbed her eighth shutout of the year in the win against Kentucky. She then set the career record in the next game at Ole Miss with her 16th shutout in 33 career games, surpassing the previous mark of 15 set by **Laura Armstrong** and **Elise Matthews**.

SHUTOUT DEFENSE

South Carolina finished the regular season tied for eighth in the nation with 12 shutouts on the year with only 10 goals allowed. Junior goalkeeper **Mollie Patton** has held the national lead in all three goalkeeping categories for the majority of the season. Going into Friday's round of 16 match, she is third in the nation with 15 solo shutouts and ranks ninth nationally with a 0.50 goals against average.

GRIMSLEY'S RECORD PLAY

Sophomore **Kayla Grimsley** has continued the stellar play that she exhibited in her freshman season last year. The flashy player set a new South Carolina record with a nine-match scoring streak, and her goal against South Alabama tied her program record four-match goal scoring streak. She currently is first in the SEC in goals (13) and second in points (33).

FIRST HALF LOCKDOWN

LSU's goal 57 seconds into the regular season game marked the first time this season that South Carolina has allowed a goal in the first half. Florida and SEC Tournament first round opponent Georgia are the only other teams to notch first half goals against South Carolina.

EXCEEDING EXPECTATIONS

For the fourth consecutive year Coach Shelley Smith's squad exceeded preseason expectations by finishing strong in conference play. Picked by the coaches to finish last in 2006, the Gamecocks earned fifth in the Eastern division. Picked to finish last in the East in the 2007 SEC Preseason poll, the Gamecocks tied a program record for wins en route to a fourth place division finish. Carolina was picked fourth in the 2008 preseason poll and again improved in the standings with a third place finish in the Eastern division. Coach Smith's team was again picked fourth in 2009 and responded with an SEC East runner-up finish that earned her SEC Coach of the Year honors.



HOME MATCHES UNDER SMITH

DATE	OPPONENT	RESULT
9-4-01	Davidson	W, 4-0
9-17-01	Furman	W, 3-0
9-19-01	SC State	W, 12-0
10-5-01	Kentucky	L, 0-1
10-7-01	Vanderbilt	L, 0-1
10-26-01	Ole Miss	W, 1-0
10-28-01	Mississippi State	L, 1-2 (OT)
11-2-01	UNC Greensboro	W, 2-0
8-30-02	Birmingham Southern	W, 3-0
9-11-02	Clemson	L, 0-1
9-14-02	College of Charleston	W, 3-1
9-29-02	Florida	W, 1-0 (OT)
10-11-02	Arkansas	L, 1-2 (OT)
10-13-02	LSU	W, 2-0
10-18-02	Georgia	L, 1-2 (OT)
10-20-02	Tennessee	T, 1-1 (OT)
10-29-02	Wofford	W, 1-0
9-2-03	Furman	L, 0-1
9-5-03	Charleston Southern	W, 2-1
9-7-03	Darmouth	W, 3-1
9-17-03	Davidson	W, 4-1
9-21-03	NC State	W, 1-0
10-3-03	Auburn	T, 0-0 (OT)
10-5-03	Alabama	W, 2-0
10-17-03	Vanderbilt	L, 0-1
10-19-03	Kentucky	W, 2-1
8-27-04	Georgia State	W, 1-0
9-3-04	Houston	W, 4-1
9-5-04	Iowa State	W, 1-0
9-15-04	Clemson	W, 2-0
9-19-04	Charlotte	W, 2-1 (2 OT)
10-1-04	Georgia	T, 1-1 (OT)
10-3-04	Tennessee	L, 1-3
10-15-04	Ole Miss	L, 0-1
10-17-04	Mississippi State	L, 2-3 (OT)
10-24-04	LSU	W, 2-1
10-29-04	Florida	L, 1-2 (2 OT)
8-26-05	Mercer	W, 7-0
8-29-05	Furman	W, 2-1
9-18-05	Miami (Fla.)	W, 2-1
9-23-05	Auburn	L, 0-1
9-25-05	Alabama	W, 2-0
10-7-05	Vanderbilt	L, 0-2
10-9-05	Kentucky	L, 1-2 (2 OT)
10-21-05	Arkansas	L, 1-2
8-31-06	Francis Marion	W, 2-1
9-3-06	James Madison	W, 3-1
9-5-06	The Citadel	W, 4-0
9-15-06	Clemson	W, 1-0
9-17-06	Jacksonville State	W, 6-0
9-29-06	Tennessee	T, 0-0 (2 OT)
10-1-06	Georgia	W, 2-1
10-13-06	Mississippi State	W, 1-0
10-15-06	Ole Miss	T, 0-0 (2 OT)
10-20-06	LSU	W, 2-1 (2 OT)
10-27-06	Florida	T, 1-1 (2 OT)
9-3-07	East Tennessee State	W, 5-2
9-12-07	Winthrop	W, 5-0
9-23-07	Marshall	W, 4-0
10-5-07	Kentucky	W, 2-0
10-7-07	Vanderbilt	L, 0-1 (2OT)
10-19-07	Alabama	W, 2-0
10-21-07	Auburn	W, 1-0
10-28-07	Arkansas	W, 1-0
8-28-08	East Carolina	W, 1-0
8-31-08	Boston University	W, 1-0
9-5-08	Clemson	W, 1-0
9-7-08	Furman	W, 2-1
9-19-08	East Tennessee State	W, 4-0
9-26-08	Tennessee	W, 2-1
9-28-08	Georgia	T, 1-1
10-10-08	Mississippi State	W, 2-1
10-12-08	Ole Miss	W, 3-2
10-23-08	LSU	T, 0-0
10-30-08	Florida	L, 0-1
8-27-09	College of Charleston	W, 2-0
8-30-09	Western Carolina	W, 2-0
9-18-09	UCF	W, 1-0
9-20-09	South Alabama	W, 6-1
9-25-09	Vanderbilt	W, 2-1
9-27-09	Kentucky	W, 1-0
10-9-09	Auburn	W, 1-0 (OT)
10-11-09	Alabama	W, 2-0
10-22-09	Arkansas	W, 2-0
11-13-09	Davidson	W, 4-0
11-15-09	Rutgers	W, 1-0

TOTAL RECORD: 60-18-8
LONGEST UNBEATEN STREAK: 15
SHUTOUTS RECORDED 44

MATTERN CONTINUES TO PICK UP NATIONAL HONORS

Senior defender **Blakely Mattern** continues to pick up honors in her final season as a Gamecock. A Lowe's Senior CLASS Award finalist, Mattern has been named the SEC Defensive Player of the Week twice, was selected to the Soccer America National Team of the Week four times, earned Top Drawer Soccer Team of the Week honors once and has also earned CollegeSoccer360.com Primetime Player of the Week honors twice. In addition, she is a first team Academic All-American for the second consecutive year and has earned NSCAA national player of the week honors this year.

MEXICAN FORESHADOW

South Carolina's incredible run this season may have been foreshadowed by the preseason ending 2-0 shutout win of the Mexican National Team. Since that match, the Mexican team went 4-0 in its collegiate tour and outscored opponents 14-2 with wins at Kennesaw State (5-0), previously ranked TCU (4-1), #14 Southern California (2-0) and Cal State Fullerton (3-1).

AT THE TOP OF THE NCAA LISTS

Noted as one of the top defensive teams in the country under **Shelley Smith**, South Carolina has continued that excellence this season and added a little offensive flair as well. The Gamecocks have the NCAA's eighth-ranked defense with a 0.53 goals against average and 15 shutouts. The team is also No. 34 in scoring offense (2.00 goals/game). With that type of production, South Carolina is also at the top of the SEC lists in half of the statistical categories. The team leads the conference in goals allowed, goals against average, shutouts, shots allowed, shots on goal allowed, points allowed and shot on goal percentage.

SPREADING THE WEALTH

Goals have been spread around the entire Gamecock team so far with a different player hitting the game-winning goal in nine of Carolina's 19 wins. Fourteen different players have scored a goal this season, and only half of those players have scored multiple goals this season: **Kayla Grimsley, Kim Miller, Blakely Mattern, Samantha Diaz-Matosas, Lindsay Small, Brooke Jacobs, Kortney Rhoades** and **Christine Watts**.

MILLER TIME

Senior **Kim Miller** has been one of the most consistent performers for South Carolina the past four years, and the New York native has stretched that consistency to another part of her game in her final season. Miller is 12th in the NCAA and second in the SEC with 11 assists so far this season, and she currently has the Carolina record with five game winning goals this season.

THE ROAD TO REDEMPTION

South Carolina lost only three games this season, dropping road matches to No. 23 Georgia (2-1), No. 13 LSU (1-0) and No. 8 Florida (3-0). After earning the fourth seed for the SEC Tournament in Orange Beach, South Carolina's road to the title was setup to allow the Gamecocks to avenge their only three losses of the season. In Wednesday's quarterfinal round, the Gamecocks defeated Georgia 3-2. In Friday's semifinal round, the Gamecocks defeated Florida 1-0. The Gamecocks officially tied LSU (1-1) in the final, but Carolina earned the title with an 8-7 edge in penalty kicks, giving South Carolina the rare chance to post a win or draw against every team on the 2009 schedule (also tied Mississippi State on the road).

FIRST TIME OPPONENTS

South Carolina faced five opponents for the first time in 2009 and went 5-0 in those games. The Gamecocks defeated Louisville (3-0), Cincinnati (4-0), UCF (1-0), South Alabama (6-1) and Rutgers (1-0). Last season, Carolina went 0-1-2 against first time opponents, drawing UNC Wilmington and #7 Florida State before dropping a tight game to Western Carolina.

IN THE POLLS

South Carolina finishes the season with a unanimous No. 8 ranking, jumping as many as seven spots in one of the three polls after the run to the SEC title. The Gamecocks are No. 8 by the NSCAA, Soccer America and Soccer Times - the first SEC team in the rankings.

GRABBING THE SCHOOL RECORD

Senior defender **Blakely Mattern** has started every game of her career, and with 91 career starts is officially the school's all-time leader after surpassing Ashley Kirk's record of 81 starts four weeks ago. She, along with **Samantha Diaz-Matosas** and **Kim Miller**, surpassed the games played record of 83 this season as well and all hold the lead with 91 games played.

GAMECOCKS ON TV

The SEC Championship match was South Carolina's fourth televised game in the 2009 season. The team defeated Vanderbilt, 2-1, in the SEC opener on Sept. 25 before falling 1-0 to LSU on ESPNU and Florida (3-0) on Fox Sports Florida. Carolina and LSU played the SEC final on ESPNU, the second game on the network between the teams this season. The first LSU broadcast marked the third consecutive season that the Gamecocks played a game on national television.



OVERTIME MATCHES

DATE	OPPONENT	RESULT
9-15-95	at VCU	W, 1-0
9-29-95	vs. Marquette (Clemson, S.C.)	L, 1-2
10-13-95	Georgia	T, 1-1
10-16-95	Evansville	W, 1-0
10-19-95	College of Charleston	T, 1-1
1995 OVERTIME RECORD: 2-1-2		
9-29-96	at Georgia	L, 1-2
10-27-96	at Auburn	T, 1-1
10-30-96	at Furman	T, 1-1
1996 OVERTIME RECORD: 0-1-2		
9-14-97	Kentucky	L, 3-4
10-10-97	at Georgia Southern	W, 3-2
1997 OVERTIME RECORD: 1-1		
9-4-98	Wake Forest	T, 1-1
9-25-98	at Kentucky	L, 0-1
10-13-98	at Furman	W, 3-2
1998 OVERTIME RECORD: 1-1-1		
9-12-99	Kentucky	L, 1-2
10-12-99	Wofford	W, 2-1
11-4-99	vs. Vanderbilt (SEC Tourn.)	L, 1-2
1999 OVERTIME RECORD: 1-2		
2000 OVERTIME RECORD: 0-0		
9-1-01	at College of Charleston	T, 0-0
9-9-01	vs. UNLV (San Diego, Calif.)	T, 1-1
10-14-01	at LSU	T, 4-4
10-28-01	Mississippi State	L, 1-2
2001 OVERTIME RECORD: 0-1-3		
9-29-02	Florida	W, 1-0
10-11-02	Arkansas	L, 1-2
10-18-02	Georgia	L, 1-2
10-20-02	Tennessee	T, 1-1
10-25-02	at Auburn	T, 1-1
2002 OVERTIME RECORD: 1-2-2		
8-29-03	at Clemson	L, 0-1
9-12-03	at Texas A&M	L, 1-2
9-14-03	at Houston	T, 1-1
10-3-03	Auburn	T, 0-0
10-24-03	at Ole Miss	T, 0-0
2003 OVERTIME RECORD: 0-2-3		
8-31-04	at James Madison	L, 2-3
9-19-04	Charlotte	W, 2-1
10-1-04	Georgia	T, 1-1
10-8-04	at Vanderbilt	T, 1-1
10-17-04	Mississippi State	L, 2-3
10-29-04	Florida	L, 1-2
2004 OVERTIME RECORD: 1-3-2		
10-10-05	Kentucky	L, 1-2
2005 OVERTIME RECORD: 0-1		
9-29-06	Tennessee	T, 0-0
10-16-06	Ole Miss	T, 0-0
10-20-06	LSU	W, 2-1
10-22-06	at Arkansas	T, 1-1
10-27-06	Florida	T, 1-1
11-1-06	vs. Vanderbilt (SEC Tourn.)	T, 1-1
2006 OVERTIME RECORD: 1-0-5		
9-27-07	at Tennessee	L, 2-3
9-30-07	at Georgia	L, 1-2
10-7-07	Vanderbilt	L, 0-1
10-12-07	at Mississippi State	T, 0-0
10-25-07	at LSU	T, 1-1
11-14-07	vs. Duke (NCAA First Rnd.)	T, 1-1
2007 OVERTIME RECORD: 0-3-3		
8-23-08	at UNC Wilmington	T, 0-0
9-7-08	Furman	W, 2-1
9-14-08	vs. Florida State (Auburn, Ala.)	T, 3-3
9-28-08	Georgia	T, 1-1
10-23-08	LSU	T, 0-0
11-14-08	vs. William & Mary (NCAA)	L, 2-3
2008 OVERTIME RECORD: 1-1-4		
10-4-09	at Mississippi State	T, 1-1
10-9-09	Auburn	W, 1-0
11-8-09	vs. LSU	T, 1-1
TOTAL RECORD: 10-19-29		
UNDER SHELLEY SMITH: 5-13-24		

ELLEN FAHEY'S STEPPING UP

Sophomore defender **Ellen Fahey** started every game at centerback last season as a freshman, continuing the legacy of all-conference caliber freshman defenders after **Blakely Mattern** (2006) and **Brittany Rhoades** (2007). Strong and assertive in the back, Fahey added a new dimension to her play thus far after recording her first four career points, three on game-winning assists. Her three game-winning assists tie the South Carolina sophomore single season record.

HELMET! HELMET! HELMET!

Junior goalkeeper **Mollie Patton** has learned to embrace the helmet she has had to wear the past two seasons due to previous concussions. This year she has company now that **Lindsay Small** and **Brittany Rhoades** have been confined to wearing headgear due to blows to the head recently. Rhoades began wearing headgear after a blow in the Clemson victory led to her getting stitches on her left brow. Small then had to get headgear after taking an inadvertent elbow in the Vanderbilt victory, causing her to get stitches below her right brow.

ROCKY TOPPED

South Carolina's 2-1 win at Tennessee last weekend marked the first win in program history in Knoxville. In addition, the victory extended Carolina's current streak in the series. After going winless in the first 13 matches between the SEC East rivals, South Carolina has now won the last three meetings - one at home, one at the SEC tournament and one in Knoxville.

SENIOR CLASS BECOMES FIRST TO WIN AT CLEMSON

South Carolina defeated rival Clemson 5-0 last Sunday for the program's first victory at Historic Riggs Field. In a rivalry that has been played annually since 1995 in a home-and-home series, the Gamecocks not only never won at Riggs Field in seven tries but never scored a goal there until the offensive outburst in a 5-0 win. Senior **Shannon Bigbie** hit the game winner in her first start of the year, classmate **Blakely Mattern** scored two goals and senior **Kim Miller** notched two assists in the victory.

DIAZ-MATOSAS DELIVERS

Senior defender **Samantha Diaz-Matosas** has started off strong for South Carolina with a four-point weekend at the Cardinal Classic. Diaz-Matosas earned an assist in the final seconds of the match against Louisville before scoring her first goal of the season and getting the game-winning assist in the 4-0 win against Cincinnati. On Senior Night, she hit the game-winner in overtime to defeat Auburn. A versatile player, Diaz-Matosas can play anywhere on the field, making her a top threat for the Gamecocks in her fourth year.

MATTERN'S CAREER WEEKEND

Senior **Blakely Mattern** had a career weekend at the Carolina's Cup when she scored three goals in two games for six points to earn the Carolina's Cup MVP honor. The senior defender also led the Gamecocks to their sixth shutout - tied for the NCAA lead - in the 5-0 win at Clemson and 2-0 win against UNC Wilmington. For her efforts, she was named the SEC Defensive Player of the Week for the second time in three weeks and also earned a spot on the Soccer America and Top Drawer Soccer National Teams of the Week.

RETURNING CATEGORY LEADERS

Carolina returns 10 starters from last season's NCAA Tournament team and only lost one senior from the squad that went 11-7-4. South Carolina will enter 2009 as one of the most experienced teams in the nation, and depth will also be available after Coach Shelley Smith signed seven freshmen and landed two transfers for the 2009 season.

Statistical Category Breakdown

Category	2008 Leader (Total)	% Returning	Top Returner
Points	Grimsley (22)	93%	Grimsley (22)
Goals	Grimsley (8)	93%	Grimsley (8)
Game-Winning Goals	Grimsley, Miller, Small (2)	91%	Grimsley, Miller, Small (2)
Assists	Grimsley (6)	46%	Grimsley (6)
Shots	Jacobs (38)	94%	Jacobs (38)
Shots on Goal	Jacobs (26)	91%	Jacobs (26)
Saves	Patton (58)	100%	Patton (58)
Goals Against Average	Patton (0.96)	100%	Patton (0.96)



GOAL SUMMARY

Player (#)	Opp. (Time)	Asst. (#)
Miller (1)	Col. of Charleston (13:42)	-
Grimsley (1)	Col. of Charleston (29:54)	Small (1)
Grimsley (2)	Western Carolina (22:38)	Fahey (1)
Miller (2)	Western Carolina (26:49)	D-Matosas (1)
Small (1)	Louisville (27:09)	Miller (1)
Watts (1)	Louisville (43:52)	-
Grimsley (3)	Louisville (89:51)	D-Matosas (2)
Mattern (1)	Cincinnati (26:54)	Fahey(2), D-Matosas (3)
Diaz-Matosas (1)	Cincinnati (59:32)	Grimsley (1)
Fligg (1)	Cincinnati (79:09)	Miller (2)
Petroni (1)	Cincinnati (81:13)	Miller (3)
Bigbie (1)	Clemson (3:22)	Miller (4), Jacobs (1)
Mattern (2)	Clemson (35:33)	Miller (5)
Jacobs (2)	Clemson (36:51)	Watts (1)
Grimsley (4)	Clemson (65:44)	-
Mattern (3)	Clemson (71:35)	-
Mattern (4)	UNC-W (55:17)	K. Rhoades (1)
Grimsley (5)	UNC-W (63:52)	Fahey (3), Brewer (1)
Grimsley (6)	UCF (27:18)	Fahey (4)
Small (2)	South Alabama (3:30)	Miller (6)
Diaz-Matosas (2)	South Alabama (19:03)	-
Aaron (1)	South Alabama (27:34)	Jacobs (2)
Grimsley (7)	South Alabama (55:53)	K. Rhoades (2)
Holland (1)	South Alabama (59:32)	Mattern (1)
Brewer (1)	South Alabama (73:39)	Petroni (1), Aaron (1)
K. Rhoades (1)	Vanderbilt (15:47)	Small (2), Grimsley (2)
Jacobs (2)	Vanderbilt (51:38)	Bigbie (1)
Watts (2)	Kentucky (55:24)	-
Small (3)	Ole Miss (67:50)	Miller (7)
Jacobs (3)	Mississippi State (45:50)	Grimsley (3)
Diaz-Matosas (3)	Auburn (97:47)	-
Mattern (5)	Alabama (11:07)	Miller (8)
Mattern (6)	Alabama (12:47)	D-Matosas (4)
Grimsley (8)	Georgia (7:07)	-
Grimsley (9)	Tennessee (32:19)	-
Small (4)	Tennessee (55:38)	Grimsley (4)
K. Rhoades (2)	Arkansas (54:04)	Grimsley (5), Miller (9)
Grimsley (10)	Arkansas (62:39)	Miller (10)
Jacobs (4)	Georgia (11:44)	Miller (11), Small (3)
Grimsley (11)	Georgia (80:20)	-
K. Rhoades (3)	Georgia (88:19)	Grimsley (6)
Miller (3)	Florida (10:36)	-
Mattern (7)	LSU (87:52)	Grimsley (7)
Jacobs (5)	Davidson (29:02)	-
Grimsley (12)	Davidson (51:23)	Diaz-Matosas (5)
Diaz-Matosas (4)	Davidson (54:24)	-
Grimsley (13)	Davidson (55:44)	Jacobs (3)
Jcobs (6)	Rutgers (35:36)	Petroni (2), Watts (2)

GOAL BREAKDOWN

At home	24
On the road	13
Neutral Site.....	11
vs. SEC.....	18
vs. Non-Conference.....	30
First Half	23
Second Half	25

ALL-TIME USC SCORING LIST

Rnk.	Name	G	A	Pts.
1.	Jennie Ondo	50	15	115
2.	Morgan McIntyre	29	5	63
3.	Kayla Grimsley	21	13	55
4.	Angela Austin	19	16	54
5.	Mindy Sanders	14	24	52
6.	Debbie Smith	19	11	49
7.	Melinda Carter	15	16	46
8.	Blakely Mattern	16	6	38
9.	Darcell Mollon	15	7	37
10.	Ashley Williams	17	2	36
11.	Lydia Bienias	12	10	34
12.	Kim Miller	8	17	33
T13.	Lexi Tourtelotte	14	3	31
T13.	Ashley Kirk	9	13	31
T13.	Sam Diaz-Matosas	9	13	31

Current Players

Kayla Grimsley	21	13	55
Blakely Mattern	16	6	38
Kim Miller	8	17	33
Sam Diaz-Matosas	9	13	31
Brooke Jacobs	10	10	30

ALL-TIME USC GOALTENDING LIST

Rnk.	Name	GAA	SHO
1.	Mollie Patton	0.72	22
T2.	Laura Armstrong	0.79	15
T2.	Elise Matthews	1.24	15
T4.	Lindsay Thorstenson	1.33	9
T4.	Carrie Warner	1.58	9
6.	Carolyn Ortega	1.14	6.5
7.	Emily Crain	1.78	6
8.	Amy Toms	1.71	5
9.	Amanda Sandling	2.04	4.5
10.	Jessica Freas	3.01	1

Current Players

Mollie Patton	0.72	22
---------------	------	----

2009 HONOR ROLL

Kacie Brewer - SEC Community Service Team

Samantha Diaz-Matosas - Second Team All-SEC

Kayla Grimsley - First Team All-SEC, Top Drawer Soccer Team of the Season, SEC All-Tournament Team, Soccer America Team of the Week (Wk5, Wk13), CollegeSoccer360 Primetime Performer of the Week (Wk5, Wk12), Preseason All-SEC, Cardinal Classic All-Tournament Team, Carolina's Cup All-Tournament Team

Brooke Jacobs - CollegeSoccer360 Primetime Performer of the Week (Wk13)

Blakely Mattern - First Team All-SEC, SEC Tournament MVP, NSCAA Player of the Week (Wk8), SEC Defensive Player of the Week (Wk2, Wk4), Soccer America Team of the Week (Wk2, Wk4, Wk8, Wk12), Top Drawer Soccer Team of the Week (Wk4), CollegeSoccer360 Primetime Performer of the Week (Wk6, Wk12), Cardinal Classic All-Tournament Team, Carolina's Cup Tournament MVP, Preseason All-SEC, Lowe's Senior CLASS Award Finalist

Kim Miller - Second Team All-SEC, SEC All-Tournament Team, Cardinal Classic All-Tournament Team, Carolina's Cup All-Tournament Team

Mollie Patton - SEC Defensive Player of the Week (Wk6), Soccer America Team of the Week (Wk3), Cardinal Classic All-Tournament Team

Lindsay Small - SEC All-Tournament Team, Carolina's Cup All-Tournament Team

SEC WEEKLY HONORS

Week

Defensive POW

1	Kailey Anders, D (Arkansas)
2	Blakely Mattern, D (South Carolina)
3	Molly Baird, GK (Tennessee)
4	Blakely Mattern, D (South Carolina)
5	Justine Bernier, GK (Alabama)
6	Mollie Patton, GK (South Carolina)
7	Michelle Betos, GK (Georgia)
8	Sydney Hiance, GK (Kentucky)
9	Alley Ronaldi, GK (Ole Miss)
10	Rachel Bachtel, GK (Vanderbilt)
11	Lauren Hyde, D (Florida)

Offensive POW

Carrie Patterson, F (Georgia)
Taylor Cunningham, M (Ole Miss)
Molly Kinsella, F (Vanderbilt)
Mick Imgram, M (Tennessee)
Kat Walsh, F (Mississippi State)
Rachel Yopez, F (LSU)
Melissa Clarke, M (LSU)
Danielle Johnson, M (Ole Miss)
Tahnai Annis, M (Florida)
Rebecca Howell, F (Auburn)
Malorie Rutledge, M (LSU)

Freshman of the Week

Amy Howard, GK (Auburn)
Rebekah Perry, M (Georgia)
Monica Alvarado, M (Mississippi State)
Brooke Thigpen, M (Florida)
Amy Howard, GK (Auburn)
Carlie Banks, F (LSU)
Amy Harrison, F (Tennessee)
Erika Tymrak, M (Florida)
Carlie Banks, F (LSU)
Amy Howard, GK (Auburn)
McKenzie Barney, M (Florida)



OPPONENT NOTES

WAKE FOREST (15-5-2, 5-3-2 ACC)

QUICK FACTS

Location Winston-Salem, N.C.
Nickname Demon Deacons
Color Old Gold & Black
Conference ACC
Head Coach Tony da Luz
Record at School (Years) 144-90-19 (13 yrs)
Career Record (Years) 190-132-23 (19 yrs)
Assistant Coaches... Tim Santoro, Megan Jessee

2008 Record.....13-8-0
Conference Finish 5-5-0 (6th)
Postseason NCAA Second Round
Series Record WFU leads, 1-0-1
Last MeetingWFU, 5-0 (8/27/99)
Letterwinners Returning/Lost.....18/6
Starters Returning/Lost.....7/4
Soccer SID Chad Crunk
SID E-mail crunkmc@wfu.edu
SID Phone(336) 758-5842
Website www.WakeForestSports.com

PROBABLE STARTERS

No.	Name	Pos	Yr.	GP	G	A	Pts.	Shots
2	Casey Luckhurt	M	Jr.	17	3	0	6	9
4	Jill Huthinson	F	Sr.	19	14	3	31	76
6	Kaley Fountain	F	Sr.	21	10	10	30	63
10	Bianca D'Agostino	M	Jr.	22	2	6	10	30
11	Allie Sadow	F	Sr.	22	4	7	15	27
12	Sarah Winslow	D	Sr.	21	1	1	3	8
19	Alisha Woodson	D	Fr.	14	0	0	0	11
20	Caitlin Farrell	D	Sr.	22	1	1	3	11
21	Jackie Logue	D	Fr.	22	1	2	4	12
26	Kristen Meier	M	Fr.	18	0	1	1	6

No.	Name	Pos.	Yr.	Min.	GA	GAA.	Svs.	W-L	SO
13	Amanda Barasha	GK	Jr.	1278:29	10	0.70	41	7-3-2	6

NSCAA/adidas

Week 12 (11/10)

No.	School	Rec.
1.	Stanford	20-0-0
2.	Portland	18-1-0
3.	UCLA	17-2-1
4.	North Carolina	17-3-1
5.	Notre Dame	17-3-1
6.	Florida State	16-4-1
7.	Boston College	15-3-2
8.	South Carolina	17-3-2
9.	Florida	15-5-2
10.	LSU	14-4-4
11.	Santa Clara	13-6-1
12.	Rutgers	13-3-4
13.	UCF	16-4-1
14.	Wake Forest	13-5-2
15.	Ohio State	14-3-2
16.	Penn State	12-5-2
17.	Virginia Tech	14-7-0
18.	Washington State	13-5-2
19.	Maryland	12-5-2
20.	BYU	17-3-2
21.	Southern California	12-6-2
22.	Texas A&M	14-6-2
23.	Dayton	16-0-5
24.	Purdue	12-5-3
25.	Marquette	15-5-2

NSCAA South Region

Week 12 (11/10)

No.	School	Rec.
1.	South Carolina	17-3-2
2.	LSU	14-4-4
3.	Florida	15-5-2
4.	Auburn	10-8-3
5.	Ole Miss	13-5-2
6.	Georgia	14-5-1
7.	Vanderbilt	11-8-1
8.	Denver	17-5-1
9.	Western Kentucky	14-4-2
10.	FIU	11-6-3

Soccer America

Week 12 (11/9)

No.	School	Rec.
1.	Stanford	20-0-0
2.	Portland	18-1-0
3.	North Carolina	17-3-1
4.	UCLA	17-2-1
5.	Notre Dame	17-3-1
6.	Florida State	16-4-1
7.	Boston College	15-3-2
8.	South Carolina	17-3-2
9.	Penn State	12-5-2
10.	Marquette	15-5-2
11.	BYU	17-3-2
12.	UCF	16-4-1
13.	Virginia Tech	14-7-0
14.	LSU	14-4-4
15.	Dayton	16-0-5
16.	San Diego State	14-3-5
17.	Memphis	16-6-0
18.	Ohio State	14-3-2
19.	Florida	15-5-2
20.	Maryland	12-5-2
21.	Wake Forest	13-5-2
22.	Washington State	13-5-2
23.	Rutgers	13-3-4
24.	Southern California	12-6-2
25.	Ole Miss	13-5-2

Soccer Times

Week 12 (11/9)

No.	School	Rec.
1.	Stanford	20-0-0
2.	Portland	18-1-0
3.	UCLA	17-2-1
4.	North Carolina	17-3-1
5.	Florida State	16-4-1
6.	Notre Dame	17-3-1
7.	Boston College	15-3-2
8.	South Carolina	17-3-2
T9.	Wake Forest	13-5-2
T9.	Florida	15-5-2
T11.	BYU	17-3-2
T11.	LSU	14-4-4
13.	Ohio State	14-3-2
14.	Washington State	13-5-2
15.	Virginia Tech	14-7-0
16.	UCF	16-4-1
17.	Penn State	12-5-2
18.	Rutgers	13-3-4
19.	Santa Clara	13-6-1
20.	Maryland	12-5-2
21.	Marquette	15-5-2
22.	Southern California	12-6-2
23.	Texas A&M	14-6-2
24.	Dayton	16-0-5
25.	Georgia	14-5-1



**SOUTH CAROLINA NCAA RECORDS
2-2-1 ALL-TIME**

GOALS

Name	No.	Year	Opponent
Brooke Jacobs	3	2009	Rutgers
Kayla Grimsley	2	2009	Davidson
Sam Diaz-Matosas	1	2009	Davidson
Kayla Grimsley	1	2009	Davidson
Brooke Jacobs	2	2009	Davidson
Dani Monteiro	1	2008	William & Mary
Brooke Jacobs	1	2008	William & Mary
Blakely Mattern	1	2007	Duke

ASSISTS

Name	No.	Year	Opponent
Maria Petroni	1	2009	Rutgers
Christine Watts	1	2009	Rutgers
Brooke Jacobs	2	2009	Davidson
Sam Diaz-Matosas	1	2009	Davidson
Brooke Jacobs	1	2008	William & Mary
Kayla Grimsley	1	2008	William & Mary
Kim Miller	1	2008	William & Mary
Brittiny Rhoades	1	2007	Duke

POINTS - SINGLE GAME

Name	No.	G/A	Year	Opponent
Kayla Grimsley	4	2/0	2009	Davidson
Brooke Jacobs	3	1/1	2009	Davidson
Sam Diaz-Matosas	3	1/1	2009	Davidson
Brooke Jacobs	3	1/1	2008	William & Mary
Brooke Jacobs	2	1/0	2009	Rutgers
Dani Monteiro	2	1/0	2008	William & Mary
Blakely Mattern	2	1/0	2007	Duke
Maria Petroni	1	0/1	2009	Rutgers
Christine Watts	1	0/1	2009	Rutgers
Kayla Grimsley	1	0/1	2008	William & Mary
Kim Miller	1	0/1	2008	William & Mary
Brittiny Rhoades	1	0/1	2007	Duke

POINTS - CAREER

Name	No.	G/A	Games	Last Game Scored
Brooke Jacobs	8	3/2	4	Rutgers (11/15/09)
Kayla Grimsley	5	2/1	3	Davidson (11/13/09)
Sam Diaz-Matosas	3	1/1	4	Davidson (11/13/09)
Dani Monteiro	2	1/0	1	William & Mary (11/14/08)
Blakely Mattern	2	1/0	4	Duke (11/16/07)
4 Players	1	0/1	-	-

SOUTH CAROLINA WEEKLY RANKINGS

Week	NCAA	South Region	S. Times	S. America	TOP DRAWER	CollegeSoccer360
Preseason	-	N/A	-	-	45	-
Week 1 (8/24)	rv	4	-	-	43	-
Week 2 (8/31)	rv	2	rv	-	41	-
Week 3 (9/7)	18	2	23	25	26	23
Week 4 (9/14)	13	3	15	12	20	13
Week 5 (9/21)	12	2	13	11	18	11
Week 6 (9/28)	8	2	7	7	15	8
Week 7 (10/5)	7	2	7	8	11	7
Week 8 (10/12)	5	1	5	5	10	6
Week 9 (10/19)	10	2	9	10	11	9
Week 10 (10/26)	13	3	14	15	16	13
Week 11 (11/2)	15	4	14	19	28	-
Reg. Season Final (11/9)	8	1	8	8	17	8



**2009 NCAA Second Round
South Carolina Game Results (as of Nov 15, 2009)
All games**

Date	Opponent		Score	Overall	Conf	Att.	Goals scored
Aug 27	COL. OF CHARLESTON	W	2-0	1-0-0	0-0-0	612	Kim Miller (unassisted) Kayla Grimsley (Lindsay Small)
Aug 30	WESTERN CAROLINA	W	2-0	2-0-0	0-0-0	489	Kayla Grimsley (Ellen Fahey) Kim Miller (Sam Diaz-Matosas)
09-04-0	at Louisville	W	3-0	3-0-0	0-0-0	1103	Lindsay Small (Kim Miller) Christine Watts (unassisted) Kayla Grimsley (Sam Diaz-Matosas)
09-06-0	vs Cincinnati Bearcats	W	4-0	4-0-0	0-0-0	229	Blakely Mattern (Ellen Fahey;Sam Diaz-Matosas) Sam Diaz-Matosas (Kayla Grimsley) Megan Fligg (Kim Miller) Maria Petroni (Kim Miller)
Sep 11	at Clemson	W	5-0	5-0-0	0-0-0	917	Shannon Bigbie (Kim Miller;Brooke Jacobs) Blakely Mattern (Kim Miller) Brooke Jacobs (Christine Watts) Kayla Grimsley (unassisted) Blakely Mattern (unassisted)
Sep 13	vs UNC Wilmington	W	2-0	6-0-0	0-0-0	155	Blakely Mattern (Kortney Rhoades) Kayla Grimsley (Ellen Fahey;Kacie Brewer)
Sep 18	#17 UCF	W	1-0	7-0-0	0-0-0	1424	Kayla Grimsley (Ellen Fahey)
Sep 20	SOUTH ALABAMA	W	6-1	8-0-0	0-0-0	443	Lindsay Small (Kim Miller) Sam Diaz-Matosas (unassisted) Natalie Aaron (Brooke Jacobs) Kayla Grimsley (Kortney Rhoades) Lolly Holland (Blakely Mattern) Kacie Brewer (Maria Petroni;Natalie Aaron)
* Sep 25	VANDERBILT	W	2-1	9-0-0	1-0-0	756	Kortney Rhoades (Lindsay Small;Kayla Grimsley) Brooke Jacobs (Shannon Bigbie)
* Sep 27	KENTUCKY	W	1-0	10-0-0	2-0-0	672	Christine Watts (unassisted)
* Oct 02	at Ole Miss	W	1-0	11-0-0	3-0-0	513	Lindsay Small (Kim Miller)
* Oct 04	at Mississippi State	TO2	1-1	11-0-1	3-0-1	142	Brooke Jacobs (Kayla Grimsley)
* Oct 09	AUBURN	WOT	1-0	12-0-1	4-0-1	827	Sam Diaz-Matosas (unassisted)
* Oct 11	ALABAMA	W	2-0	13-0-1	5-0-1	1023	Blakely Mattern (Kim Miller) Blakely Mattern (Sam Diaz-Matosas)
* Oct 16	at #16 Georgia	L	1-2	13-1-1	5-1-1	1715	Kayla Grimsley (unassisted)
* Oct 18	at Tennessee	W	2-1	14-1-1	6-1-1	1332	Kayla Grimsley (unassisted) Lindsay Small (Kayla Grimsley)
* Oct 22	ARKANSAS	W	2-0	15-1-1	7-1-1	746	Kortney Rhoades (Kayla Grimsley;Kim Miller) Kayla Grimsley (Kim Miller)
* Oct 25	at #14 LSU	L	0-1	15-2-1	7-2-1	861	-
* Oct 30	at #10 Florida	L	0-3	15-3-1	7-3-1	3104	-
Nov 04	vs Georgia	W	3-2	16-3-1	7-3-1		Brooke Jacobs (Kim Miller;Lindsay Small) Kayla Grimsley (unassisted) Kortney Rhoades (Kayla Grimsley)
Nov 06	vs #10 Florida	W	1-0	17-3-1	7-3-1		Kim Miller (unassisted)
Nov 08	vs #13 LSU	TO2	1-1	17-3-2	7-3-1	1522	Blakely Mattern (Kayla Grimsley)
Nov 13	DAVIDSON	W	4-0	18-3-2	7-3-1	3813	Brooke Jacobs (unassisted) Kayla Grimsley (Sam Diaz-Matosas) Sam Diaz-Matosas (unassisted) Kayla Grimsley (Brooke Jacobs)
Nov 15	#12 RUTGERS	W	1-0	19-3-2	7-3-1	2724	Brooke Jacobs (Maria Petroni;Christine Watts)



**2009 NCAA Second Round
South Carolina Combined Team Statistics (as of Nov 15, 2009)
All games**

RECORD:	OVERALL	HOME	AWAY	NEUTRAL
ALL GAMES	19-3-2	11-0	4-3-1	4-0-1
CONFERENCE	7-3-1	5-0	2-3-1	0-0
NON-CONFERENCE	12-0-1	6-0	2-0	4-0-1

Date	Opponent		Score	Att.	#	Player	gp	g	a	pts	sh	sh%	sog	sog%	gw	pk-att
Aug 27	COL. OF CHARLESTON	W	2-0	612	4	Kayla Grimsley	24	13	7	33	43	.302	24	.558	2	0-0
Aug 30	WESTERN CAROLINA	W	2-0	489	5	Kim Miller	24	3	11	17	31	.097	12	.387	2	0-0
09-04-0	at Louisville	W	3-0	1103	7	Blakely Mattern	24	7	1	15	21	.333	15	.714	3	0-0
09-06-0	vs Cincinnati Bearcats	W	4-0	229	27	Brooke Jacobs	24	6	3	15	42	.143	27	.643	3	0-0
Sep 11	at Clemson	W	5-0	917	3	Sam Diaz-Matosas	24	4	5	13	36	.111	20	.556	2	0-0
Sep 13	vs UNC Wilmington	W	2-0	155	16	Lindsay Small	24	4	3	11	38	.105	19	.500	3	0-0
Sep 18	#17 UCF	W	1-0	1424	15	Kortney Rhoades	24	3	2	8	26	.115	13	.500	2	0-0
Sep 20	SOUTH ALABAMA	W	6-1	443	8	Christine Watts	24	2	2	6	19	.105	8	.421	1	0-0
* Sep 25	VANDERBILT	W	2-1	756	9	Maria Petroni	21	1	2	4	4	.250	3	.750	0	0-0
* Sep 27	KENTUCKY	W	1-0	672	20	Ellen Fahey	23	0	4	4	3	.000	2	.667	0	0-0
* Oct 02	at Ole Miss	W	1-0	513	23	Kacie Brewer	24	1	1	3	8	.125	6	.750	0	0-0
* Oct 04	at Mississippi State	To2	1-1	142	12	Shannon Bigbie	22	1	1	3	8	.125	5	.625	1	0-0
* Oct 09	AUBURN	Wot	1-0	827	10	Natalie Aaron	19	1	1	3	8	.125	2	.250	0	0-0
* Oct 11	ALABAMA	W	2-0	1023	14	Lolly Holland	15	1	0	2	7	.143	2	.286	0	0-0
* Oct 16	at #16 Georgia	L	1-2	1715	2	Megan Fligg	16	1	0	2	2	.500	2	1.000	0	0-0
* Oct 18	at Tennessee	W	2-1	1332	19	Kira Campbell	22	0	0	0	10	.000	4	.400	0	0-0
* Oct 22	ARKANSAS	W	2-0	746	18	Ali Glemser	13	0	0	0	6	.000	4	.667	0	0-0
* Oct 25	at #14 LSU	L	0-1	861	21	Brittany Rhoades	24	0	0	0	5	.000	2	.400	0	0-0
* Oct 30	at #10 Florida	L	0-3	3104	22	Dani Henry	16	0	0	0	3	.000	0	.000	0	0-0
Nov 04	vs Georgia	W	3-2	0	25	Maddy Kill	10	0	0	0	1	.000	1	1.000	0	0-0
Nov 06	vs #10 Florida	W	1-0	0	29	Mollie Patton	24	0	0	0	0	.000	0	.000	0	0-0
Nov 08	vs #13 LSU	To2	1-1	1522	28	Brittany DeWitt	4	0	0	0	0	.000	0	.000	0	0-0
Nov 13	DAVIDSON	W	4-0	3813	26	Rae Wilson	6	0	0	0	0	.000	0	.000	0	0-0
Nov 15	#12 RUTGERS	W	1-0	2724	17	Maggie Blackwell	2	0	0	0	0	.000	0	.000	0	0-0
					11	Idana DeCecco	2	0	0	0	0	.000	0	.000	0	0-0
					6	Samantha Abrahart	1	0	0	0	0	.000	0	.000	0	0-0
					1	Roya Mojarab	1	0	0	0	0	.000	0	.000	0	0-0
						Total	24	48	43	139	321	.150	171	.533	19	0-0
						Opponents	24	13	10	36	192	.068	77	.401	3	1-1

TEAM STATISTICS	SC	OPP
SHOT STATISTICS		
Goals-Shot attempts	48-321	13-192
Goals scored per game	2.00	0.54
Shot pct.	.150	.068
Shots on goal-Attempts	171-321	77-192
SOG pct.	.533	.401
Shots/Game	13.4	8.0
CORNER KICKS	119	77
PENALTY KICKS	0-0	1-1
PENALTIES		
Yellow cards	9	15
Red cards	1	0
ATTENDANCE		
Total	13529	9687
Dates/Avg Per Date	11/1230	8/1211
Neutral Site #/Avg	5/381	

#	Goalie	GP	Min.	GA	GAAvg	Saves	Pct	W-L-T	Sho
29	Mollie Patton	24	2177:19	12	0.50	62	.838	19-3-2	15
1	Roya Mojarab	1	30:28	1	2.95	2	.667	0-0-0	0
	Total	24	2207:47	13	0.53	64	.831	19-3-2	15
	Opponents	24	2207:47	48	1.96	123	.719	3-17-2	2

Goals by Period	1st	2nd	OT	OT2	Total
South Carolina	23	24	1	0	48
Opponents	6	7	0	0	13

Shots by Period	1st	2nd	OT	OT2	Total
South Carolina	164	152	5	0	321
Opponents	75	113	2	2	192

Saves by Period	1st	2nd	OT	OT2	Total
South Carolina	21	43	0	0	64
Opponents	64	58	1	0	123

Corners by Period	1st	2nd	OT	OT2	Total
South Carolina	67	48	1	3	119
Opponents	28	47	0	2	77

Fouls by Period	1st	2nd	OT	OT2	Total
South Carolina	82	107	4	1	194

**SOUTH CAROLINA MATCH-BY-MATCH STATISTICS**

DATE	OPPONENT	G	A	PTS	SH	PCT	SOG	SOG%	CORNERS	FOULS	YC	SAVES	GA
8/27	Col. Charleston	2	2	6	11	.182	7	.636	3	7	0	1	0
8/31	Western Carolina	2	2	6	11	.182	7	.636	6	4	0	0	0
9/4	Louisville	3	2	8	12	.250	8	.667	7	10	0	6	0
9/6	Cincinnati	4	5	13	22	.182	15	.682	7	7	0	5	0
9/11	Clemson	5	4	14	12	.417	7	.583	4	9	1	6	0
9/13	UNC Wilmington	2	3	7	23	.087	9	.391	3	7	0	6	0
9/18	#17 UCF	1	1	3	8	.125	4	.500	6	10	1	3	0
9/20	South Alabama	6	6	18	23	.261	13	.565	6	7	0	3	1
9/25	Vanderbilt	2	3	7	14	.143	6	.429	6	11	0	0	1
9/27	Kentucky	1	0	2	14	.071	8	.571	8	9	0	1	0
10/2	Ole Miss	1	1	3	10	.100	5	.500	1	5	0	5	0
10/4	Mississippi State	1	1	3	14	.071	3	.214	2	11	1	5	1
10/9	Auburn	1	0	2	17	.059	8	.471	4	13	2	3	0
10/11	Alabama	2	2	6	18	.111	11	.611	7	15	0	1	0
10/16	#23 Georgia	1	0	2	12	.083	8	.667	1	4	0	2	2
10/18	Tennessee	2	1	5	16	.125	5	.313	6	14	1	6	1
10/22	Arkansas	2	3	7	15	.133	8	.533	4	7	1	3	0
10/25	#17 LSU	0	0	0	5	.000	3	.600	6	3	2	2	1
10/30	#10 Florida	0	0	0	8	.000	2	.250	3	7	0	0	3
11/4	SEC - #25 Georgia	3	2	8	12	.250	6	.500	8	8	0	1	2
11/6	SEC - #8 Florida	1	0	2	6	.167	3	.500	2	4	0	2	0
11/8	SEC - #13 LSU	1	1	3	11	.091	7	.636	9	6	0	0	1
11/13	NCAA - Davidson	4	2	10	16	.250	12	.750	9	8	0	0	0
11/15	NCAA - #12 Rutgers	1	2	4	11	.091	6	.545	1	8	0	3	0
South Carolina		48	43	139	321	.150	171	.533	119	194	9	64	13

Bold - Season-High

OPPONENT MATCH-BY-MATCH STATISTICS

DATE	OPPONENT	G	A	PTS	SH	PCT	SOG	SOG%	CORNERS	FOULS	YC	SAVES	GA
8/27	Col. Charleston	0	0	0	2	.000	1	.500	3	7	0	5	2
8/31	Western Carolina	0	0	0	0	N/A	0	N/A	1	9	0	5	2
9/4	Louisville	0	0	0	10	.000	6	.600	3	10	0	5	3
9/6	Cincinnati	0	0	0	10	.000	5	.500	2	12	0	11	4
9/11	Clemson	0	0	0	12	.000	6	.500	4	8	1	2	5
9/13	UNC Wilmington	0	0	0	8	.000	6	.750	0	10	0	7	2
9/18	#17 UCF	0	0	0	12	.000	3	.250	3	11	1	3	1
9/20	South Alabama	1	1	3	4	.250	4	1.000	2	9	0	7	6
9/25	Vanderbilt	1	1	3	8	.125	1	.125	4	8	1	4	2
9/27	Kentucky	0	0	0	2	.000	1	.500	4	10	0	7	1
10/2	Ole Miss	0	0	0	8	.000	5	.625	5	4	0	4	1
10/4	Mississippi State	1	0	2	12	.083	6	.500	0	12	2	2	1
10/9	Auburn	0	0	0	7	.000	3	.429	2	15	1	7	1
10/11	Alabama	0	0	0	5	.000	1	.200	6	12	0	9	2
10/16	#23 Georgia	2	1	5	8	.250	4	.500	5	4	0	7	1
10/18	Tennessee	1	0	2	19	.052	7	.368	8	13	0	3	2
10/22	Arkansas	0	0	0	11	.000	3	.273	1	7	1	6	2
10/25	#17 LSU	1	2	4	10	.100	3	.300	4	9	0	3	0
10/30	#10 Florida	3	3	9	11	.273	3	.273	5	8	1	2	0
11/4	SEC - #25 Georgia	2	2	6	8	.250	3	.375	3	11	1	3	3
11/6	SEC - #8 Florida	0	0	0	7	.000	2	.286	1	6	0	2	1
11/8	SEC - #13 LSU	1	0	2	6	.167	1	.167	5	11	1	6	1
11/13	NCAA - Davidson	0	0	0	3	.000	0	.000	4	10	1	8	4
11/15	NCAA - #12 Rutgers	0	0	0	9	.000	3	.333	2	12	2	5	1
Opponents		13	10	36	192	.068	77	.401	77	228	13	123	48



GAME-BY-GAME INDIVIDUAL LEADERS

DATE	OPPONENT	W/L	SCORE	HIGH SHOTS	HIGH SOG	HIGH GOALS	HIGH ASSISTS	HIGH POINTS
8/27	Col. Charleston	W	2-0	Miller, K. Rhoades (2)	K. Rhoades (2)	Miller, Grimsley (1)	Small (1)	Miller, Grimsley (2)
8/31	Western Carolina	W	2-0	Diaz, Miller, Grimsley (2)	Diaz, Grimsley (2)	Miller, Grimsley (1)	Fahey, Diaz-Matosas (1)	Miller, Grimsley (2)
9/4	Louisville	W	3-0	Watts (3)	Grimsley, Watts (2)	Small, Grimsley, Watts (1)	Miller, Diaz-Matosas (1)	Small, Watts, Grim (2)
9/6	Cincinnati	W	4-0	Small (5)	Mattern, Small (3)	4 players (1)	Miller (2)	Diaz-Matosas (3)
9/11	Clemson	W	5-0	Campbell (4)	Mattern, Campbell (2)	Mattern (2)	Miller (2)	Mattern (4)
9/13	UNC Wilmington	W	2-0	Jacobs (5)	Jacobs (2)	Mattern, Grimsley (1)	Rhoades, Fahey, Brewer (1)	Mattern, Grimsley (2)
9/18	#17 UCF	W	1-0	Diaz-Matosas (2)	4 players (1)	Grimsley (1)	Fahey (1)	Grimsley (2)
9/20	South Alabama	W	6-1	Jacobs, Grimsley (4)	Brewer (3)	6 players (1)	6 players (1)	6 players (2)
9/25	Vanderbilt	W	2-1	Jacobs (4)	Jacobs (3)	K. Rhoades, Jacobs (1)	Grimsley, Bigbie, Small (1)	K. Rhoades, Jacobs (2)
9/27	Kentucky	W	1-0	Watts, Grimsley (3)	Jacobs, Watts (2)	Watts (1)	-	Watts (2)
10/2	Ole Miss	W	1-0	Small (5)	Small (3)	Small (1)	Miller (1)	Small (2)
10/4	Mississippi State	T	1-1	Miller, Jacobs (3)	Diaz, Fahey, Jacobs (1)	Jacobs (1)	Grimsley (1)	Jacobs (2)
10/9	Auburn	W	1-0	Diaz-Matosas (4)	Jacobs (2)	Diaz-Matosas (1)	-	Diaz-Matosas (2)
10/11	Alabama	W	2-0	Jacobs, Diaz-Matosas (3)	Diaz, Mattern, K. Rh (2)	Mattern (2)	Miller, Diaz-Matosas (2)	Mattern (4)
10/16	#23 Georgia	L	1-2	Jacobs (4)	Jacobs (3)	Grimsley (1)	-	Grimsley (2)
10/18	Tennessee	W	2-1	Grimsley (7)	Grimsley (3)	Grimsley, Small (1)	Grimsley (1)	Grimsley (3)
10/22	Arkansas	W	2-0	Small (4)	Grimsley (2)	Grimsley, K. Rhoades (1)	Miller (2)	Grimsley (3)
10/25	#17 LSU	L	0-1	Miller (2)	Miller, Mattern, Small (1)	-	-	-
10/30	#10 Florida	L	0-3	Grimsley, Miller (2)	Grimsley, Miller (1)	-	-	-
11/4	SEC - #25 Georgia	W	3-2	K. Rhoades (4)	K. Rhoades (2)	K. Rhoades, Grimsley, Jacobs (1)	Small, Grimsley, Miller (1)	Grimsley (3)
11/6	SEC - #8 Florida	W	1-0	Diaz-Matosas (2)	Miller, Small, Diaz (1)	Miller (1)	-	Miller (2)
11/8	SEC - #13 LSU	T	1-1	Mattern (4)	Mattern (3)	Mattern (1)	Grimsley (1)	Mattern (2)
11/13	NCAA - Davidson	W	4-0	Small (4)	Grimsley, Jacobs (3)	Grimsley (2)	Diaz, Jacobs (1)	Grimsley (4)
11/15	NCAA - #12 Rutgers	W	1-0	Diaz-Matosas (6)	Diaz-Matosas (4)	Jacobs (1)	Petroni, Watts (1)	Jacobs (2)

GAME-BY-GAME STARTERS

DATE	OPPONENT	W/L	F	F	M/F	M	M	M	D	D	D	D	GK
8/27	Col. Charleston	W	Jacobs	Grimsley	Campbell	Miller	Small	K. Rhoades	Mattern	Diaz-Matosas	Fahey	B. Rhoades	Patton
8/31	Western Carolina	W	Jacobs	Grimsley	Campbell	Miller	Small	K. Rhoades	Mattern	Diaz-Matosas	Fahey	B. Rhoades	Patton
9/4	Louisville	W	Jacobs	Grimsley	Campbell	Miller	Small	K. Rhoades	Mattern	Diaz-Matosas	Fahey	B. Rhoades	Patton
9/6	Cincinnati	W	Jacobs	Grimsley	Campbell	Miller	Small	K. Rhoades	Mattern	Diaz-Matosas	Fahey	B. Rhoades	Patton
9/11	Clemson	W	Jacobs	Grimsley	Campbell	Miller	Small	Bigbie	Mattern	Diaz-Matosas	Fahey	B. Rhoades	Patton
9/13	UNC Wilmington	W	Jacobs	Grimsley	Campbell	Miller	Small	K. Rhoades	Mattern	Diaz-Matosas	Fahey	Bigbie	Patton
9/18	#17 UCF	W	Jacobs	Grimsley	Bigbie	Miller	Small	K. Rhoades	Mattern	Diaz-Matosas	Fahey	B. Rhoades	Patton
9/20	South Alabama	W	Jacobs	Grimsley	Bigbie	Miller	Small	K. Rhoades	Mattern	Fligg	Fahey	B. Rhoades	Patton
9/25	Vanderbilt	W	Jacobs	Grimsley	Bigbie	Miller	Small	K. Rhoades	Mattern	Diaz-Matosas	Fahey	B. Rhoades	Patton
9/27	Kentucky	W	Jacobs	Grimsley	Bigbie	Miller	Small	K. Rhoades	Mattern	Diaz-Matosas	Fahey	B. Rhoades	Patton
10/2	Ole Miss	W	Jacobs	Grimsley	Bigbie	Miller	Small	K. Rhoades	Mattern	Diaz-Matosas	Fahey	B. Rhoades	Patton
10/4	Mississippi State	T	Jacobs	Grimsley	Bigbie	Miller	Small	K. Rhoades	Mattern	Diaz-Matosas	Fahey	B. Rhoades	Patton
10/9	Auburn	W	Brewer	Grimsley	Bigbie	Miller	Small	K. Rhoades	Mattern	Diaz-Matosas	Fahey	B. Rhoades	Patton
10/11	Alabama	W	Jacobs	Grimsley	Bigbie	Miller	Small	K. Rhoades	Mattern	Diaz-Matosas	Fahey	B. Rhoades	Patton
10/16	#23 Georgia	L	Jacobs	Grimsley	Bigbie	Miller	Small	K. Rhoades	Mattern	Diaz-Matosas	Fahey	B. Rhoades	Patton
10/18	Tennessee	W	Jacobs	Grimsley	Bigbie	Miller	Small	K. Rhoades	Mattern	Diaz-Matosas	Fahey	B. Rhoades	Patton
10/22	Arkansas	W	Jacobs	Grimsley	Bigbie	Miller	Small	K. Rhoades	Mattern	Diaz-Matosas	Fahey	B. Rhoades	Patton
10/25	#17 LSU	L	Jacobs	Grimsley	Bigbie	Miller	Small	K. Rhoades	Mattern	Diaz-Matosas	Fahey	B. Rhoades	Patton
10/30	#10 Florida	L	Jacobs	Grimsley	Bigbie	Miller	Campbell	K. Rhoades	Mattern	Diaz-Matosas	Small	B. Rhoades	Patton
11/4	SEC - #25 Georgia	W	Jacobs	Grimsley	Bigbie	Miller	Small	K. Rhoades	Mattern	Diaz-Matosas	Fahey	B. Rhoades	Patton
11/6	SEC - #8 Florida	W	Jacobs	Grimsley	Diaz-Matosas	Miller	Small	K. Rhoades	Mattern	Bigbie	Fahey	B. Rhoades	Patton
11/8	SEC - #13 LSU	T	Jacobs	Grimsley	Diaz-Matosas	Miller	Small	K. Rhoades	Mattern	Bigbie	Fahey	B. Rhoades	Patton
11/13	NCAA - Davidson	W	Jacobs	Grimsley	Diaz-Matosas	Miller	Small	K. Rhoades	Mattern	Bigbie	Fahey	B. Rhoades	Patton
11/15	NCAA - #12 Rutgers	W	Jacobs	Grimsley	Diaz-Matosas	Miller	Small	K. Rhoades	Mattern	Bigbie	Fahey	B. Rhoades	Patton



HOME-ONLY INDIVIDUAL STATISTICS

##	PLAYER	GP-GS	G	A	PTS	SH	PCT	SOG	SOG%	GWG	GWA
2	Megan Fligg	9-1	0	0	0	1	.000	1	1.000	0	0
3	Samantha Diaz-Matosas	11-10	3	3	9	26	.115	15	.577	2	0
4	Kayla Grimsley	11-11	7	2	16	22	.318	14	.636	2	1
5	Kim Miller	11-11	2	4	8	13	.154	4	.308	1	2
7	Blakely Mattern	11-11	2	1	5	6	.333	5	.833	1	0
8	Christine Watts	11-0	1	1	3	10	.100	5	.500	0	2
9	Maria Petroni	9-0	0	2	2	2	.000	1	.500	0	1
10	Natalie Aaron	10-0	1	1	3	5	.200	2	.400	0	0
11	Idana DeCecco	1-0	0	0	0	0	.000	0	.000	0	0
12	Shannon Bigbie	9-9	0	1	1	2	.000	0	.000	0	1
13	Jocelyn Spurrier	0-0	0	0	0	0	.000	0	.000	0	0
14	Lolly Holland	7-0	1	0	2	3	.333	1	.333	0	0
15	Kortney Rhoades	11-11	2	1	5	14	.143	9	.643	1	0
16	Lindsay Small	11-11	1	2	4	15	.067	5	.333	0	0
17	Maggie Blackwell	1-0	0	0	0	0	.000	0	.000	0	0
18	Ali Glemser	8-0	0	0	0	4	.000	3	.750	0	0
19	Kira Campbell	9-2	0	0	0	2	.000	2	1.000	0	0
20	Ellen Fahey	11-11	0	2	2	1	.000	1	1.000	0	2
21	Brittany Rhoades	11-11	0	0	0	3	.000	0	.000	0	0
22	Dani Henry	9-0	0	0	0	2	.000	0	.000	0	0
23	Kacie Brewer	11-1	1	0	2	5	.200	4	.800	0	0
25	Maddy Kill	4-0	0	0	0	1	.000	1	1.000	0	0
26	Rae Wilson	4-0	0	0	0	0	.000	0	.000	0	0
27	Brooke Jacobs	11-10	3	2	8	22	.137	17	.773	2	1
28	Brittany DeWitt	2-0	0	0	0	0	.000	0	.000	0	0
TEAM											
South Carolina		11	24	22	70	158	.152	90	.570	11	8
Opponents		11	2	2	6	63	.032	20	.317	0	0

GOALKEEPERS

	GP-GS	Min.	GA	GAA.	Svs.	Save %	W-L	SO	
0	Alex Holland	0-0	00:00	0	0.00	0	0-0-0	0	
1	Roya Mojarab	1-0	30:28	1	2.95	2	0-0-0	0	
29	Mollie Patton	11-11	967:19	1	0.09	16	11-0-0	9	
35	Darien Vercillo	0-0	00:00	0	0.00	0	0-0-0	0	
TEAM									
South Carolina		11	997:47	2	0.18	18	.900	11-0-0	9
Opponents		11	997:47	24	2.16	66	.733	0-11-0	0

HOME-ONLY TEAM STATS

SCORING	USC	OPP
Goals.....	24	2
Assists.....	22	2
Points.....	70	6
SHOTS		
Shots	158	63
Pct.152	.032
Shots On Goal.....	90	20
SOG%.....	.570	.317
FOULS		
Fouls.....	99	110
Cards	4	8
GOALKEEPING		
Saves	18	66
Goals Against.....	2	24
GAA	0.18	2.16



AWAY-ONLY INDIVIDUAL STATISTICS

##	PLAYER	GP-GS	G	A	PTS	SH	PCT	SOG	SOG%	GWG	GWA
2	Megan Fligg	7-0	1	0	2	1	1.000	1	1.000	0	0
3	Samantha Diaz-Matosas	13-13	1	2	4	10	.100	5	.500	0	1
4	Kayla Grimsley	13-13	6	5	17	21	.286	10	.476	0	2
5	Kim Miller	13-13	1	7	9	18	.056	8	.444	1	3
7	Blakely Mattern	13-13	5	0	10	15	.333	10	.667	2	0
8	Christine Watts	13-0	1	1	3	9	.111	3	.333	0	0
9	Maria Petroni	12-0	1	0	2	2	.500	2	1.000	0	0
10	Natalie Aaron	10-0	0	0	0	3	.000	0	.000	0	0
11	Idana DeCecco	1-0	0	0	0	0	.000	0	.000	0	0
12	Shannon Bigbie	13-11	1	0	2	6	.167	5	.833	1	0
13	Jocelyn Spurrier	0-0	0	0	0	0	.000	0	.000	0	0
14	Lolly Holland	8-0	0	0	0	4	.000	1	.250	0	0
15	Kortney Rhoades	13-12	1	1	3	12	.083	4	.333	1	1
16	Lindsay Small	13-13	3	1	7	24	.125	14	.583	3	0
17	Maggie Blackwell	1-0	0	0	0	0	.000	0	.000	0	0
18	Ali Glemser	5-0	0	0	0	2	.000	1	.500	0	0
19	Kira Campbell	13-5	0	0	0	7	.000	2	.286	0	0
20	Ellen Fahey	12-12	0	2	2	2	.000	1	.500	0	1
21	Brittany Rhoades	13-12	0	0	0	2	.000	2	1.000	0	0
22	Dani Henry	7-0	0	0	0	1	.000	0	.000	0	0
23	Kacie Brewer	13-0	0	1	1	3	.000	2	.667	0	0
25	Maddy Kill	6-0	0	0	0	0	.000	0	.000	0	0
26	Rae Wilson	2-0	0	0	0	0	.000	0	.000	0	0
27	Brooke Jacobs	13-13	3	1	7	20	.150	10	.500	0	1
28	Brittany DeWitt	1-0	0	0	0	0	.000	0	.000	0	0
TEAM											
South Carolina		13	24	21	72	163	.147	81	.497	8	9
Opponents		13	11	8	30	129	.085	57	.442	3	4

GOALKEEPERS

	GP-GS	Min.	GA	GAA.	Svs.	Save %	W-L	SO	
0	Alex Holland	0-0	00:00	0	0.00	0	0-0-0	0	
1	Roya Mojarab	0-0	00:00	0	0.00	0	0-0-0	0	
29	Mollie Patton	13-13	1210:00	12	0.89	46	8-3-2	6	
35	Darien Vercillo	0-0	00:00	0	0.00	0	0-0-0	0	
TEAM									
South Carolina		13	1210:00	12	0.89	46	.793	8-3-2	6
Opponents		13	1210:00	24	1.79	57	.704	3-8-2	2

AWAY-ONLY TEAM STATS

SCORING	USC	OPP
Goals.....	24	11
Assists.....	21	8
Points.....	72	30
SHOTS		
Shots	163	129
Pct.147	.085
Shots On Goal.....	81	57
SOG%.....	.497	.442
FOULS		
Fouls	95	118
Cards	6	6
GOALKEEPING		
Saves	46	57
Goals Against.....	12	24
GAA	0.89	1.79



EXHIBITION - MEXICAN NAT'L TEAM (2-0)

Soccer Box Score (Final)
The Automated ScoreBook For Soccer
Mexico U20 vs South Carolina (Aug 21, 2009 at Greenville, S.C.)

Mexico U20 vs. South Carolina (1-0-0) vs.
Date: Aug 21, 2009 • Attendance: 3000
Weather:

Table with columns: Po ## Player, Sh, SO, G, A, Min. Lists players like Erika VANEGAS, Marlene SANDOVAL, etc.

Goals by period table for Mexico U20 vs South Carolina. Shows 2 goals in the 2nd period.

Goalkeepers table for Mexico U20 vs South Carolina. Lists Erika VANEGAS.

Shots by period table for Mexico U20 vs South Carolina. Shows 11 total shots.

Corner kicks table for Mexico U20 vs South Carolina. Shows 4 total corner kicks.

Scoring summary table for Mexico U20 vs South Carolina. Lists goals by Christine Watts and Sam Diaz-Matosas.

Cautions and ejections:
YC-SC #20 (62:36)
Stadium: MeSA Soccer Complex
Officials:
Offsides: Mexico U20 1, South Carolina 3.

Goals by period table for South Carolina vs Mexico U20. Shows 2 goals in the 2nd period.

Table with columns: Po ## Player, Sh, SO, G, A, Min. Lists players like Mollie Patton, Sam Diaz-Matosas, etc.

Goalkeepers table for South Carolina vs Mexico U20. Lists Mollie Patton.

Shots by period table for South Carolina vs Mexico U20. Shows 11 total shots.

Corner kicks table for South Carolina vs Mexico U20. Shows 3 total corner kicks.

Scoring summary table for South Carolina vs Mexico U20. Lists goals by Brittney Rhoades and Kayla Grimsley.

Official's signature

GAME 1 - CofC (2-0)

Soccer Box Score (Final)
The Automated ScoreBook For Soccer
Col. of Charleston vs South Carolina (Aug 27, 2009 at Columbia, S.C.)

Col. of Charleston (0-1-0) vs. South Carolina (1-0-0)
Date: Aug 27, 2009 • Attendance: 612
Weather:

Table with columns: Po ## Player, Sh, SO, G, A, Min. Lists players like Sarah Wiggers, Hope Atkinson, etc.

Goalkeepers table for Col. of Charleston vs South Carolina. Lists Sarah Wiggers.

Shots by period table for Col. of Charleston vs South Carolina. Shows 11 total shots.

Corner kicks table for Col. of Charleston vs South Carolina. Shows 3 total corner kicks.

Scoring summary table for Col. of Charleston vs South Carolina. Lists goals by Kim Miller and Lindsay Small.

Cautions and ejections:
Stadium: Stone Stadium
Officials: Referee: Jeremy Brooks; Asst. Referee: John Tanverdi; Kenneth Ayers;
Timekeeper: Bryan Powell; Scorer: Miquel Jacobs;
Offsides: Col. of Charleston 1, South Carolina 2.

Goals by period table for Col. of Charleston vs South Carolina. Shows 2 goals in the 2nd period.

Table with columns: Po ## Player, Sh, SO, G, A, Min. Lists players like Mollie Patton, Sam Diaz-Matosas, etc.

Goalkeepers table for Col. of Charleston vs South Carolina. Lists Mollie Patton.

Saves by period table for Col. of Charleston vs South Carolina. Shows 5 total saves.

Fouls table for Col. of Charleston vs South Carolina. Shows 7 total fouls.

Scoring summary table for Col. of Charleston vs South Carolina. Lists goals by Miquel Jacobs.

Official's signature

GAME 2 - WCU (2-0)

Soccer Box Score (Final)
2009 South Carolina Women's Soccer
Western Carolina vs South Carolina (Aug 30, 2009 at Columbia, S.C.)

Western Carolina (2-1-0) vs. South Carolina (2-0-0)
Date: Aug 30, 2009 • Attendance: 489
Weather:

Table with columns: Po ## Player, Sh, SO, G, A, Min. Lists players like Caitlin Williams, Liz Eichler, etc.

Goalkeepers table for Western Carolina vs South Carolina. Lists Caitlin Williams.

Shots by period table for Western Carolina vs South Carolina. Shows 11 total shots.

Corner kicks table for Western Carolina vs South Carolina. Shows 1 total corner kick.

Scoring summary table for Western Carolina vs South Carolina. Lists goals by Kayla Grimsley and Kim Miller.

Cautions and ejections:
Stadium: Stone Stadium
Officials: Referee: Joe Balazs; Asst. Referee: Alan Correa; Steve Abbott;
Timekeeper: Adrienne Cunningham; Scorer: Miquel Jacobs;
Offsides: Western Carolina 0, South Carolina 4.

Goals by period table for Western Carolina vs South Carolina. Shows 2 goals in the 2nd period.

Table with columns: Po ## Player, Sh, SO, G, A, Min. Lists players like Mollie Patton, Sam Diaz-Matosas, etc.

Goalkeepers table for Western Carolina vs South Carolina. Lists Mollie Patton.

Saves by period table for Western Carolina vs South Carolina. Shows 5 total saves.

Fouls table for Western Carolina vs South Carolina. Shows 9 total fouls.

Scoring summary table for Western Carolina vs South Carolina. Lists goals by Brittney Rhoades and Brooke Jacobs.

Official's signature

GAME 3 - Louisville (3-0)

Soccer Box Score (Final)
2009 South Carolina Women's Soccer
South Carolina vs Louisville (09-04-09 at Louisville, Ky.)

South Carolina (3-0) vs. Louisville (1-2)
Date: 09-04-09 • Attendance: 1103
Weather:

Table with columns: Po ## Player, Sh, SO, G, A, Min. Lists players like Mollie Patton, Sam Diaz-Matosas, etc.

Goalkeepers table for South Carolina vs Louisville. Lists Mollie Patton.

Shots by period table for South Carolina vs Louisville. Shows 12 total shots.

Corner kicks table for South Carolina vs Louisville. Shows 3 total corner kicks.

Scoring summary table for South Carolina vs Louisville. Lists goals by Lindsay Small, Christine Watts, and Kayla Grimsley.

Cautions and ejections:
Stadium: Cardinal Park
Officials: Referee: Kelly R. Ross; Asst. Referee: Rachel Bramlage; Andy Ellsworth;
Alt. Official: Mike Dutt; Timekeeper: Kent Jennings; Scorer: Garrett Wall;
Offsides: South Carolina 4, Louisville 2.

Goals by period table for South Carolina vs Louisville. Shows 3 goals in the 2nd period.

Table with columns: Po ## Player, Sh, SO, G, A, Min. Lists players like Taylor Vancil, Courtney Holtz, etc.

Goalkeepers table for South Carolina vs Louisville. Lists Taylor Vancil.

Saves by period table for South Carolina vs Louisville. Shows 6 total saves.

Fouls table for South Carolina vs Louisville. Shows 10 total fouls.

Scoring summary table for South Carolina vs Louisville. Lists goals by Miquel Jacobs.

Official's signature



GAME 24 - #12 RUTGERS (1-0)

GAME 25

Soccer Box Score (Final) 2009 NCAA Second Round

#12 Rutgers vs #8 South Carolina (Nov 15, 2009 at Columbia, S.C.)

Rutgers (14-4-4) vs.
South Carolina (19-3-2)
Date: Nov 15, 2009 • Attendance: 2724
Weather:

Goals by period	1	2	Total
Rutgers	0	0	0
South Carolina	1	0	1

Po	#	Player	Sh	SO	G	A	Min
gk	1	GUTHRIE, Erin	-	-	-	-	90
d	2	WOELLER, Shannon	-	-	-	-	90
m	4	HAMLETON, Allie	-	-	-	-	74
f	7	PACE, Stefaniee	-	-	-	-	62
m	12	MEDCALF, Ashley	-	-	-	-	78
d	14	ANZIVINO, Jennifer	-	-	-	-	90
f	17	PRICE, April	-	-	-	-	57
f	19	SCHACHER, Karla	3	2	-	-	82
d	21	WISE, Becky	-	-	-	-	57
m	22	MCLAUGHLIN, Maura	1	-	-	-	50
d	23	LANCOS, Julie	1	-	-	-	90
-- Substitutes --							
3	DUMONT, Kelsey	-	-	-	-	-	21
5	SLEIMAN, Rheanne	3	1	-	-	-	45
9	LANG, Kristie	-	-	-	-	-	10
13	EDWARDS, Jasmine	-	-	-	-	-	6
15	SAVICS, Maja	-	-	-	-	-	19
18	DIPALO, Tricia	-	-	-	-	-	18
25	CONWAY, Caitlin	1	-	-	-	-	64
Totals		9	3	0	0		

Po	#	Player	Sh	SO	G	A	Min
gk	29	Mollie Patton	-	-	-	-	90
f	3	Sam Diaz-Matosas	6	4	-	-	62
f	4	Kayla Grimsley	1	-	-	-	83
m	5	Kim Miller	2	1	-	-	83
d	7	Blakely Mattern	-	-	-	-	90
d	12	Shannon Bigbie	-	-	-	-	90
m	15	Kortney Rhoades	-	-	-	-	49
m	16	Lindsay Small	-	-	-	-	74
d	20	Ellen Fahey	-	-	-	-	90
d	21	Brittany Rhoades	1	-	-	-	90
f	27	Brooke Jacobs	1	1	1	-	84
-- Substitutes --							
8	Christine Watts	-	-	-	-	-	1 31
9	Maria Petroni	-	-	-	-	-	1 28
19	Kira Campbell	-	-	-	-	-	33
22	Dani Henry	-	-	-	-	-	7
23	Kacie Brewer	-	-	-	-	-	6
Totals		11	6	1	2		

#	Goalkeepers	Min	GA	Saves
1	GUTHRIE, Erin	90:00	1	5

#	Goalkeepers	Min	GA	Saves
29	Mollie Patton	90:00	0	3

Shots by period	1	2	Total
Rutgers	3	6	9
South Carolina	3	8	11

Saves by period	1	2	Total
Rutgers	0	5	5
South Carolina	2	1	3

Corner kicks	1	2	Total
Rutgers	0	2	2
South Carolina	1	0	1

Fouls	1	2	Total
Rutgers	4	8	12
South Carolina	3	5	8

Scoring summary:

No.	Time	Team	Goal scorer	Assist	Description
1.	35:36	SC	Brooke Jacobs (6)	Maria Petroni Christine Watts	In box

Cautions and ejections:

YC-RU #12 (57:33); YC-RU #23 (86:00)

Stadium: Stone Stadium

Officials: Referee: Sandra Serafim; Asst. Referee: Melanie Johnson; Mark Bouda;

Alt. Official: Steve Abbott; Timekeeper: Calhoun Hipp; Scorer: Miquel Jacobs;

Offsides: Rutgers 1, South Carolina 2.

Official's signature

GAME 26

GAME 27



#0 Alex Holland
GK • 5-7 • Fr.

Bests	Season	Career
Saves:	N/A	Same
Minutes:	N/A	Same

Career Statistics

YEAR	GP/GS	MIN	SVS	GA	GAA	SHO
2009	0-0	0	0	0	0	0
TOTALS	0-0	0	0	0	0	0



#1 Roya Mojarab
GK • 5-4 • So.

Bests	Season	Career
Saves:	2, (9/20)	Same
Minutes:	30:28, (9/20)	Same

Career Statistics

YEAR	GP/GS	MIN	SVS	GA	GAA	SHO
2008	1-0	13:07	0	0	0.00	0
2009	1-0	30:28	2	1	2.95	0
TOTALS	2-0	43:35	2	1	2.06	0



#2 Megan Fligg
D • 5-6 • Fr.

Bests	Season	Career
Goals:	1, (9/6)	Same
Assists:	N/A	Same
Points:	2, (9/6)	Same
Shots:	1, 2x* (9/6)	Same
SOG:	1, (9/6)	Same

Career Statistics

YEAR	GP/GS	SH	G	A	PTS	GWG
2009	16-1	2	1	0	2	0
TOTALS	16-1	2	1	0	2	0



#3 Samantha Diaz-Matosas
D • 5-7 • Sr.

Bests	Season	Career
Goals:	1, 4x* (11/13)	1, 9x* (11/13)
Assists:	1, 5x* (11/13)	1, 13x* (11/13)
Points:	3, (11/13)	3, 2x* (11/13)
Shots:	6, (11/15)	Same
SOG:	4, (11/15)	Same

Career Statistics

YEAR	GP/GS	SH	G	A	PTS	GWG
2006	22-22	30	2	4	8	0
2007	23-18	9	1	2	4	0
2008	22-22	16	2	2	6	2
2009	24-23	36	4	5	13	2
TOTALS	91-85	91	9	13	31	4

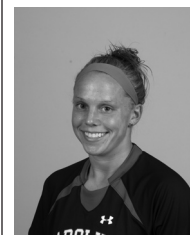


#4 Kayla Grimsley
F • 5-4 • So.

Bests	Season	Career
Goals:	2, (11/13)	2, 2x* (11/13)
Assists:	1, 6x* (11/4)	1, 12x* (11/4)
Points:	4, (11/13)	4, 2x* (11/13)
Shots:	7, (10/18)	Same
SOG:	3, 2x* (11/13)	3, 3x* (11/13)

Career Statistics

YEAR	GP/GS	SH	G	A	PTS	GWG
2008	22-20	37	8	6	22	2
2009	24-24	43	13	7	33	2
TOTALS	46-44	80	21	13	55	4



#5 Kim Miller
M • 5-2 • Sr.

Bests	Season	Career
Goals:	1, 3x* (11/6)	2, (10/26/08)
Assists:	2, 3x* (10/22)	2, 3x* (10/22)
Points:	2, 6x* (11/6)	4, (10/26/08)
Shots:	3, 2x* (10/4)	4, (10/28/07)
SOG:	2, (9/6)	2, 8x* (9/6)

Career Statistics

YEAR	GP/GS	SH	G	A	PTS	GWG
2006	22-20	9	0	2	2	0
2007	23-23	17	1	1	3	1
2008	22-22	36	4	3	11	2
2009	24-24	31	3	11	17	2
TOTALS	91-89	93	8	17	33	5



#7 Blakely Mattern
D • 5-9 • Sr.

Bests	Season	Career
Goals:	2, 2x* (10/11)	Same
Assists:	1, (9/20)	1, 6x* (9/20)
Points:	4, 2x* (10/11)	Same
Shots:	4, (11/8)	4, 3x* (11/8)
SOG:	3, 2x* (11/8)	Same

Career Statistics						
YEAR	GP/GS	SH	G	A	PTS	GWG
2006	22-22	28	3	3	9	2
2007	23-23	18	2	2	6	0
2008	22-22	20	4	0	8	0
2009	24-24	21	7	1	15	3
TOTALS 91-91	87	16	6	38	5	



#8 Christine Watts
M • 5-6 • Fr.

Bests	Season	Career
Goals:	1, 2x* (9/27)	Same
Assists:	1, 2x* (11/15)	Same
Points:	2, 2x* (9/27)	Same
Shots:	3, 2x* (9/27)	Same
SOG:	2, 2x* (9/27)	Same

Career Statistics						
YEAR	GP/GS	SH	G	A	PTS	GWG
2009	24-0	19	2	2	6	1
TOTALS 24-0	19	2	2	6	1	



#9 Maria Petroni
F • 5-10 • So.

Bests	Season	Career
Goals:	1, (9/6)	Same
Assists:	1, 2x* (11/15)	1, 4x* (11/15)
Points:	2, (9/6)	Same
Shots:	1, 4x* (10/22)	2, 2x* (10/3/08)
SOG:	1, 3x* (10/22)	1, 6x* (10/22)

Career Statistics						
YEAR	GP/GS	SH	G	A	PTS	GWG
2008	17-7	8	0	2	2	0
2009	21-0	4	1	2	4	0
TOTALS 38-7	12	1	4	6	0	



#10 Natalie Aaron
F • 5-10 • So.

Bests	Season	Career
Goals:	1, (9/20)	1, 3x* (9/20)
Assists:	1, (9/20)	1, 2x* (9/20)
Points:	3, (9/20)	Same
Shots:	2, (9/20)	5, (10/5/08)
SOG:	1, 2x* (10/11)	4, (10/17/08)

Career Statistics						
YEAR	GP/GS	SH	G	A	PTS	GWG
2008	21-2	27	2	1	5	1
2009	19-0	8	1	1	3	0
TOTALS 40-2	35	3	2	8	1	



#11 Idana DeCecco
D • 5-6 • So.

Bests	Season	Career
Goals:	N/A	1, (9/14/08)
Assists:	N/A	Same
Points:	N/A	2, (9/14/08)
Shots:	N/A	1, 2x* (10/10/08)
SOG:	N/A	1, (9/14/08)

Career Statistics						
YEAR	GP/GS	SH	G	A	PTS	GWG
2008	15-0	2	1	0	2	0
2009	2-0	0	0	0	0	0
TOTALS 17-0	2	1	0	2	0	



#12 Shannon Bigbie
F • 5-6 • Sr.

Bests	Season	Career
Goals:	1, (9/11)	1, 3x* (9/11)
Assists:	1, (9/25)	1, 6x* (9/25)
Points:	2, (9/11)	2, 3x* (9/11)
Shots:	2, (10/16)	5, (9/9/07)
SOG:	2, (10/16)	4, (9/9/07)

Career Statistics						
YEAR	GP/GS	SH	G	A	PTS	GWG
2006	22-5	0	0	0	0	0
2007	23-8	13	1	1	3	1
2008	22-20	24	1	4	6	0
2009	22-20	8	1	1	3	1
TOTALS 89-53	45	3	6	12	2	



#13 Jocelyn Spurrier
D • 5-8 • R-Fr.

Bests	Season	Career
Goals:	N/A	Same
Assists:	N/A	Same
Points:	N/A	Same
Shots:	N/A	Same
SOG:	N/A	Same

Career Statistics

YEAR	GP/GS	SH	G	A	PTS	GWG
2008	REDSHIRTED					
2009	0-0	0	0	0	0	0
TOTALS	0-0	0	0	0	0	0



#14 Lolly Holland
M • 5-4 • So.

Bests	Season	Career
Goals:	1, (9/20)	Same
Assists:	N/A	Same
Points:	2, (9/20)	Same
Shots:	4, (9/13)	Same
SOG:	1, 2x* (9/20)	Same

Career Statistics

YEAR	GP/GS	SH	G	A	PTS	GWG
2008	15-0	1	0	0	0	0
2009	15-0	7	1	0	2	0
TOTALS	30-0	8	1	0	2	0



#15 Kortney Rhoades
M • 5-4 • So.

Bests	Season	Career
Goals:	1, 3x* (11/4)	1, 6x* (11/4)
Assists:	1, 2x* (9/20)	2, (9/12/08)
Points:	2, 3x* (11/4)	2, 7x* (11/4)
Shots:	4, (11/4)	5, 2x* (10/5/08)
SOG:	2, 4x* (11/4)	2, 6x* (11/4)

Career Statistics

YEAR	GP/GS	SH	G	A	PTS	GWG
2008 (SJ)	17-13	34	3	4	10	1
2009	24-23	26	3	2	8	2
TOTALS	41-36	60	6	6	18	3

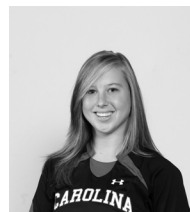


#16 Lindsay Small
M • 5-7 • Sr.

Bests	Season	Career
Goals:	1, 3x* (10/2)	1, 6x* (10/2)
Assists:	1, 3x* (11/4)	1, 4x* (11/4)
Points:	2, 3x* (10/2)	3, (9/19/08)
Shots:	5, 2x* (10/2)	6, 2x* (10/17/08)
SOG:	3, 2x* (10/2)	Same

Career Statistics

YEAR	GP/GS	SH	G	A	PTS	GWG
2006	16-0	4	0	0	0	0
2007	23-0	5	0	0	0	0
2008	22-22	35	3	1	7	2
2009	24-24	37	4	3	11	3
TOTALS	85-46	81	7	4	18	5

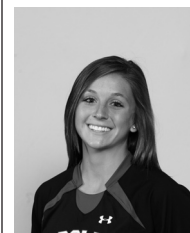


#17 Maggie Blackwell
D • 5-6 • R-So.

Bests	Season	Career
Goals:	N/A	Same
Assists:	N/A	Same
Points:	N/A	Same
Shots:	N/A	Same
SOG:	N/A	Same

Career Statistics

YEAR	GP/GS	SH	G	A	PTS	GWG
2007	REDSHIRTED					
2008	0-0	0	0	0	0	0
2009	2-0	0	0	0	0	0
TOTALS	2-0	0	0	0	0	0



#18 Ali Glemser
F • 5-3 • R-Fr.

Bests	Season	Career
Goals:	N/A	Same
Assists:	N/A	Same
Points:	N/A	Same
Shots:	2, (9/20)	Same
SOG:	1, 4x* (9/20)	Same

Career Statistics

YEAR	GP/GS	SH	G	A	PTS	GWG
2008	REDSHIRTED					
2009	13-0	6	0	0	0	0
TOTALS	13-0	6	0	0	0	0



#19 Kira Campbell
M • 5-8 • So.

Bests	Season	Career
Goals:	N/A	Same
Assists:	N/A	1, (9/5/08)
Points:	N/A	1, (9/5/08)
Shots:	4, (9/11)	Same
SOG:	2, (9/11)	Same

Career Statistics

YEAR	GP/GS	SH	G	A	PTS	GWG
2008	22-12	12	0	1	1	0
2009	22-8	10	0	0	0	0
TOTALS	44-20	22	0	1	1	0

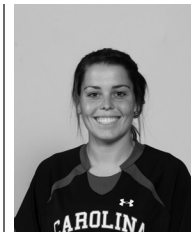


#20 Ellen Fahey
D • 5-7 • So.

Bests	Season	Career
Goals:	N/A	Same
Assists:	1, 4x* (9/18)	Same
Points:	1, 4x* (9/18)	Same
Shots:	2, (10/4)	Same
SOG:	1, 2x* (10/9)	1, 3x* (10/9)

Career Statistics

YEAR	GP/GS	SH	G	A	PTS	GWG
2008	22-22	1	0	0	0	0
2009	23-23	3	0	4	4	0
TOTALS	45-45	4	0	4	4	0

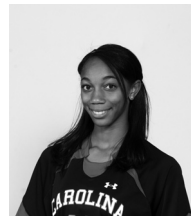


#21 Brittiny Rhoades
D • 5-3 • Jr.

Bests	Season	Career
Goals:	N/A	Same
Assists:	N/A	2, (9/26/08)
Points:	N/A	2, (9/26/08)
Shots:	1, 5x* (11/15)	3, (10/19/07)
SOG:	1, 2x* (9/6)	3, (10/19/07)

Career Statistics

YEAR	GP/GS	SH	G	A	PTS	GWG
2007	23-22	5	0	4	4	0
2008	22-22	15	0	5	5	0
2009	24-23	5	0	0	0	0
TOTALS	69-67	25	0	9	9	0



#22 Dani Henry
D • 5-4 • R-Fr.

Bests	Season	Career
Goals:	N/A	Same
Assists:	N/A	Same
Points:	N/A	Same
Shots:	1, 3x* (9/20)	Same
SOG:	N/A	Same

Career Statistics

YEAR	GP/GS	SH	G	A	PTS	GWG
2008	REDSHIRTED					
2009	16-0	3	0	0	0	0
TOTALS	16-0	3	0	0	0	0

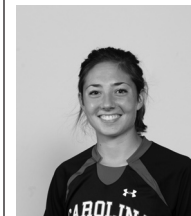


#23 Kacie Brewer
F • 5-5 • Sr.

Bests	Season	Career
Goals:	1, (9/20)	1, 2x* (9/20)
Assists:	1, (9/13)	1, 2x* (9/13)
Points:	2, (9/20)	2, 2x* (9/20)
Shots:	3, (9/20)	5, (9/12/07)
SOG:	3, (9/20)	3, 2x* (9/20)

Career Statistics

YEAR	GP/GS	SH	G	A	PTS	GWG
2006	5-0	1	0	0	0	0
2007	13-0	10	1	1	3	0
2008	9-0	3	0	0	0	0
2009	24-1	8	1	1	3	0
TOTALS	51-1	22	2	2	6	0



#25 Maddy Kill
M • 5-7 • Jr.

Bests	Season	Career
Goals:	N/A	1, 2x* (10/7/07)
Assists:	N/A	2, 3x* (8/30/08)
Points:	N/A	2, 4x* (8/30/08)
Shots:	1, (8/27)	4, 2x* (9/14/08)
SOG:	1, (8/27)	2, 3x* (9/14/08)

Career Statistics

YEAR	GP/GS	SH	G	A	PTS	GWG
2007 (SH)	18-5	20	2	5	9	0
2008 (SH)	18-8	17	0	3	3	0
2009	10-0	1	0	0	0	0
TOTALS	46-13	38	2	8	12	0



#26 Rae Wilson
F • 5-5 • Fr.

Bests	Season	Career
Goals:	N/A	Same
Assists:	N/A	Same
Points:	N/A	Same
Shots:	N/A	Same
SOG:	N/A	Same

Career Statistics

YEAR	GP/GS	SH	G	A	PTS	GWG
2009	5-0	0	0	0	0	0
TOTALS	5-0	0	0	0	0	0

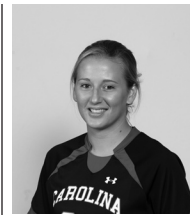


#27 Brooke Jacobs
F • 5-3 • Jr.

Bests	Season	Career
Goals:	1, 6x* (11/15)	1, 10x* (11/15)
Assists:	1, 3x* (11/13)	2, (9/23/07)
Points:	3, (11/13)	3, 2x* (11/13)
Shots:	5, (9/13)	Same
SOG:	3, 3x* (11/13)	3, 5x* (11/13)

Career Statistics

YEAR	GP/GS	SH	G	A	PTS	GWG
2007	15-4	11	1	3	5	1
2008	21-15	38	3	4	10	1
2009	24-23	41	6	3	15	3
TOTALS	60-42	90	10	10	30	5



#28 Brittany DeWitt
D • 5-6 • Fr.

Bests	Season	Career
Goals:	N/A	Same
Assists:	N/A	Same
Points:	N/A	Same
Shots:	N/A	Same
SOG:	N/A	Same

Career Statistics

YEAR	GP/GS	SH	G	A	PTS	GWG
2009	4-0	0	0	0	0	0
TOTALS	4-0	0	0	0	0	0



#29 Mollie Patton
GK • 5-7 • R-Jr.

Bests	Season	Career
Saves:	6, 3x* (9/13)	8, (9/14/08)
Minutes:	110:00, (10/4)	110:00, 5x* (10/4)

Career Statistics

YEAR	GP/GS	MIN	SVS	GA	GAA	SHO
2006	REDSHIRTED					
2007	0-0	0	0	0	0	0
2008	22-22	2053	58	22	0.96	7
2009	24-24	2177	62	12	0.50	15
TOTALS	46-46	4230	120	34	0.72	22



#35 Darien Vercillo
GK • 5-6 • Fr.

Bests	Season	Career
Saves:	N/A	Same
Minutes:	N/A	Same

Career Statistics

YEAR	GP/GS	MIN	SVS	GA	GAA	SHO
2009	0-0	0	0	0	0	0
TOTALS	0-0	0	0	0	0	0



Shelley Smith Ninth Season

Shelley Smith enters her ninth season at the helm of the USC women's soccer program and looks to continue building upon the success that she has brought to the program after taking the team to the first back-to-back NCAA Tournament appearances in program history.

Smith has cemented Carolina's position as a conference title contender and player on the national stage after guiding the Gamecocks in 2008 to their second consecutive NCAA Tournament bid and third consecutive SEC Tournament bid, both program firsts. The Gamecocks went 11-7-4 overall and earned five SEC wins for the third year in a row with only one senior on the roster. Respected as a top defensive team, the Gamecocks finished the regular season second in the SEC with eight shutouts and ranked in the top two in every major defensive category including goals allowed, points allowed, shots allowed and shots on goal allowed.

Blakely Mattern and Kayla Grimsley both earned All-SEC honors with Mattern earning her second first team and Grimsley picking up spots on the second team and freshman team. The duo also picked up Soccer Buzz All-Southeast Region honors while Mattern also earned a nod by the NSCAA.

Carolina's success in the classroom continued last season as her squad earned two Academic All-District honors in Mattern and Mollie Patton. Mattern was also named to the Academic All-America first team, making South Carolina one of only four teams in the nation – and the only in the SEC – to have an Academic All-American selected each of the past four seasons. Her team was also honored with its seventh NSCAA Team Academic Award. The team had 11 players named to the SEC Academic Honor Roll in addition to nine selections to the SEC Freshman Honor Roll. Overall, Smith has coached 131 SEC Academic Honor Roll recipients since coming to USC in 2001.

Smith has coached several top student-athletes at Carolina including Ashley Kirk, USC's first four-time All-SEC honoree, Carolina's first All-American in three-time All-SEC selection Blakely Mattern and two-time All-SEC performers Melinda Carter, Jessica Julin and Sarah Lentz. Julin is currently the captain of the Finland National Team and Carter played in the WUSA. The Gamecocks have earned 20 All-SEC honors in the last eight years.

In her first season as head coach at Carolina (2001), the Gamecocks were the third most improved team in the nation with an 8-7-3 overall record. Carolina also had one of the school's best home records, going 5-3 at Stone Stadium, allowing opponents to score only four goals in eight matches.

The success continued for USC in 2002 with 13 wins in Smith's second season. The year was highlighted with USC's first ever victories against Florida and Kentucky. Smith also led her team to ties against 2002 SEC champion Auburn and Eastern Division champion Tennessee.

Smith led the Gamecocks to another successful season in 2003 with 10 wins including a USC record eight-game unbeaten streak as well as a 6-2-1 record at home in Stone Stadium.

The 2004 season featured a win over No. 7 Clemson, the Gamecocks' first win over a ranked opponent since 1998, as well as a 6-3 mark in non-conference action. Ashley Kirk also became the first freshman soccer player in school history to be named SEC Freshman of the Year. In addition, Carolina set a school record for a home game-winning streak with six consecutive wins.

Following an injury filled 2005 season, the program took a big step forward in 2006 as USC went undefeated at home for the first time in school history with an 8-0-3 mark at Stone Stadium. The team's cumulative goals against average of 0.69 was the lowest ever tallied at Carolina. The season culminated with the Gamecocks advancing to the SEC Tournament semifinals for the first time in Carolina history, as Blakely Mattern became the team's first Freshman All-America selection since 1998.

Smith directed the 2007 Gamecocks to arguably the best season in school history, tying the school record with 14 victories and advancing to the NCAA Tournament for only the second time in program history. Carolina posted a 14-6-3 overall record including a 5-4-2 mark in the SEC after beginning the season by becoming the first team ever to knock off defending national champion and top-ranked North Carolina in a season opening game at Fetzer Field in Chapel Hill. The Gamecocks ran to a 7-0-0 start to the season – program bests for start to a season and winning streak – and peaked at No. 7 in the national polls. For the second consecutive season South Carolina advanced to the SEC Tournament semifinals after knocking off Tennessee for the first time in program history and earned the school's first bid to the NCAA Tournament since 1998. Blakely Mattern became the first sophomore to ever earn SEC Defensive Player of the Year honors in addition to becoming the first All-American in South Carolina history.

In 12 years as a head coach, Smith has compiled an overall record of 122-97-24. Besides her collegiate coaching, Smith was a member of the Region III ODP staff for the past five years, as well as an assistant for the '90 Regional Team. Smith also was a member of the 2003 U-14 National Camp staff for U.S. Soccer.

With a background in both semi-professional and collegiate soccer, Smith previously served as head coach at Rhode Island from 1997-2000. The 2000 NSCAA Northeast Region Coach of the Year, Smith rebuilt the URI women's soccer program, compiling a 41-35-2 overall record. Smith took a

program that was 2-16 her first year to 12-7-1 in her second season, marking the eighth-most improved won-lost record for a team in NCAA history. In 2000, Smith coached URI to its best record ever of 15-4-1, while reaching the Atlantic 10 Semifinals, a first in URI history.

Smith was nominated for the 2000 National Coach of the Year. The New England Women's Soccer Intercollegiate Soccer Association (NEWISA) also named her its Division I Coach of the Year in 2000. She was the 1998 Atlantic 10 Coach of the Year as well.

In addition to her experience as a coach, Smith brings experience from the semi-professional level. From 1996-2000, Smith played for the Boston Renegades in the W-1 League. Smith was captain in 2000 as she led Boston to the semifinals in the W-1 Championship. The Renegades reached the finals in 1998. Smith also had the opportunity to play overseas in 1994 as a member of the Sheffield United Women's Football Club in England.

Smith, a 1993 graduate of the University of Vermont with a degree in nutritional science, received her teacher's certificate from the same institution in 1995. Smith started all four years for the Catamounts. Her primary positions were center midfielder and central defender. She was a regional All-American in both 1992 and '93 in addition to being named First Team All-North Atlantic Conference each year from 1991-93. During her freshman year, the squad won the ECAC Tournament. Vermont was one of the first programs to offer women's soccer as a varsity sport and it competed on a national level. Smith was named to Vermont's Athletic Hall of Fame in the summer of 2004.

Smith worked as an assistant coach at Dartmouth College from 1995-97. The Big Green made the NCAA Tournament in her second season with the program.

Smith is married to USC associate head coach Jamie Smith. They are the proud parents of two sons, Braden James, born on Nov. 25, 2003 and Evan Addison born on Jan. 6, 2006.

Smith has her USSF B license and the NCAA Advanced National Diploma. She is currently a member of the USYSA Regional Olympic Development Staff.

Year-By-Year Results		
Year	Record	School
1997	2-16	Rhode Island
1998	12-7-1	Rhode Island
1999	12-8	Rhode Island
2000	15-4-1	Rhode Island
2001	8-7-3	South Carolina
2002	13-6-2	South Carolina
2003	10-8-3	South Carolina
2004	8-10-2	South Carolina
2005	6-12	South Carolina
2006	11-6-5	South Carolina
2007	14-6-3	South Carolina
2008	11-7-4	South Carolina
2009	19-3-2	South Carolina