

2007 Gamecock
VOLLEYBALL



THE GAMECOCKS



2006 LETTERWINNER

GAMECOCKS



DINELIA CONCEPCION

5-3 • Junior-2L
Libero/Def. Specialist
Deltona, Fla.
(Pine Ridge H.S.)

CAREER HIGHS

| | |
|------------------------------|---|
| Kills |1, 3x, last Alabama (11/13/05) |
| Attacks |2, Boise State (8/25/06) |
| Hitting Pct. (Min. 12 Kills) |N/A |
| Assists |3, 4x, last Mississippi (10/13/06) |
| Service Aces |4, Pittsburgh (9/2/05) |
| Digs |28, Alabama (11/17/06) |
| Block Solos |N/A |
| Block Assists |N/A |
| Total Blocks |N/A |

2006 (SOPHOMORE): Played in all 32 matches and all but one of South Carolina's 123 games ... Made the SEC Academic Honor Roll for the second year in a row ... Finished second on the team in total digs and digs per game with 288 and 2.36 ... Made 14 starts ... Started another 10 as South Carolina's libero and played the role 11 times overall ... Reached double figures in the digs category 12 times ... Did not miss a serve in 24-of-32 matches and had a perfect return percentage in a dozen ... Made all of her serves in 15 consecutive matches during a stretch that began Sept. 24 and ended Nov. 12 ... Posted a career-high at Alabama on Nov. 17 with 28 digs, the most by a Gamecock since Yajaira Cadet tallied 30 versus North Carolina in the 2002 NCAA Tournament ... Was South Carolina's most accurate server with a 97.8 percent mark ... Missed only eight serves on 359 attempts during the year ... Placed fourth on the squad for her serve reception percentage at 93.8 ... Her strong passing skills resulted in just one ball handling error for the entire season ... Opened the season with consecutive double-figure dig performances in Fort Worth, Texas, at the TCU Molten/La Quinta Invitational ... Notched 17 against Boise State in the first match Aug. 25 and followed with 16 versus the host Horned Frogs later in the evening ... Served up three aces on 11 tries in a 3-0 win against Charlotte on Sept. 1 ... Had 11 digs and successfully returned all but one of 27 serves that fell her way when South Carolina defeated Auburn 3-2 Sept. 15 ... A major contributor in the Gamecocks' 3-1 victory over Mississippi on Oct. 13 with a dozen digs and she connected on 13-of-13 serves, as well as 29-of-29 receptions ... Reached double digits in digs in three of four matches from Oct. 22 to Nov. 3 ... Missed just one of 97 service returns during the stretch in addition to averaging 2.73 digs per game ... Had 11 or more digs in four straight matches beginning with the 17 she made Nov. 10 in a 3-2 win over the Kentucky ... Followed with 11, 16 and 28 against Tennessee, Georgia and Alabama on Nov. 12, 15 and 17.

2005 (FRESHMAN): Named to the SEC Freshmen Academic Honor Roll ... Was one of five players to play in all 27 matches and one of only two freshmen to do so ... Used as a defensive specialist for the Gamecocks ... Her 238 digs and 2.43 digs per game were second on the team ... Tallied 157 digs in SEC matches, which was five away from tying Iris Santos' team-leading total ... Ended up with 23 assists on the year as well ... Reached double figures in the digs category 10 times ... Concepcion had at least three digs in 23 matches ... Her season-high in digs was 21 against Arkansas on Sept. 25 ... Recorded six consecutive 10-plus-dig matches beginning with Houston on Sept. 16 when she notched 18 ... Had one less than that figure in South Carolina's next match-up with LSU on Sept. 23 ... After the 21 versus Arkansas, Concepcion saved 14 balls against Mississippi State on Sept. 30 and 18 versus the Lady Rebels of Mississippi on Oct. 2 ... Her streak ended after digging 17 balls in the Oct. 7 Georgia tilt ... Had back-to-back 10-dig performances with 10 and 12 versus Auburn on Oct. 16 and Kentucky on Oct. 23 ... Her final match with at least 10 digs came in the Gamecocks' penultimate contest of the year when she chalked up 13 against Alabama on Nov. 13 ... Gave a strong showing in South Carolina's 3-1 win over North Carolina on Sept. 10 by making 18 digs.

HIGH SCHOOL: Graduated No. 8 out of 500 in her senior class from Pine Ridge High School in Deltona, Fla. ... Was coached by Debbie Hartman ... Four-year letterwinner in volleyball ... Was named best defensive player for her team all four years ... Set a school record for most digs in a season ... Named one of the top 99 defenders by PrepVolleyball.com ... Member of National Honor Society and Italian Honor Society ... Two-time



first-team all-conference recipient ... Named first-team by the *News Journal* and the *Orlando Sentinel* ... In 2003, Concepcion earned second-team recognition on the *Orlando Sentinel's* All-Central Florida Volleyball Team ... Played club volleyball for Orlando Volleyball Academy and was coached by Sindee Snow.

PERSONAL: Is pursuing two degrees in criminal justice and international studies ... Her full name is Dinelia Ailenix Concepcion ... Parents are Carmen Santana and Onix Concepcion ... Was born Nov. 2, 1987 ... Her brother is Onix Iuel Concepcion.

CAREER STATISTICS

| YEAR | MP | GP | KILL | K/G | ERR | ATT | PCT | AST | A/G | SA | SE | SA/G | RE | DIG | D/G | BS | BA | TB | B/G | BE | BHE |
|--------------|-----------|------------|----------|-------------|----------|-----------|--------------|-----------|-------------|-----------|-----------|-------------|-----------|------------|-------------|----------|----------|----------|-------------|----------|----------|
| 2005 | 27 | 98 | 3 | 0.03 | 3 | 7 | .000 | 23 | 0.23 | 17 | 9 | 0.17 | 32 | 238 | 2.43 | 0 | 0 | 0 | 0.00 | 0 | 4 |
| 2006 | 32 | 122 | 0 | 0.00 | 2 | 5 | -.400 | 27 | 0.22 | 13 | 8 | 0.11 | 34 | 288 | 2.36 | 0 | 0 | 0 | 0.00 | 0 | 1 |
| TOTAL | 59 | 220 | 3 | 0.01 | 5 | 12 | -.167 | 50 | 0.23 | 30 | 17 | 0.14 | 66 | 526 | 2.39 | 0 | 0 | 0 | 0.00 | 0 | 5 |



GAMECOCKS



PETRA LORENZI

5-9 • Junior-2L
Setter
Crescent City, Calif.
(Del Norte H.S.)

CAREER HIGHS

| | |
|---|----------------------------------|
| Kills | 2, 2x, last Tennessee (10/26/05) |
| Attacks | 7, Georgia (10/30/05) |
| Hitting Pct. (Min. 12 Kills) | N/A |
| Assists | 52, Georgia (10/30/05) |
| Service Aces | 1, 10x, last CoFC (11/22/06) |
| Digs | 13, LSU (10/29/06) |
| Block Solos | 2, Alabama (10/14/05) |
| Block Assists | 3, Georgia (10/30/05) |
| Total Blocks | 3, Georgia (10/30/05) |

2006 (SOPHOMORE): Played in 20 matches and made four appearances in a starting role ... Became a key contributor for South Carolina when starting setter Iris Santos was sidelined for the final nine matches for medical reasons ... Made 200 assists on the year to push her career total over 500 and become one of 10 Gamecocks in school history to do so ... Had the second-best serving percentage on the team by missing just four on 86 attempts for a 95.3 percent figure ... Reached double digits in the assists category eight times ... Her highest total of the year was 49 at Arkansas on Sept. 24 ... Lorenzi came in for Santos after she suffered a sprained ankle midway through the first game ... Had 10 or more defensive saves twice ... Notched two double-doubles that came in consecutive matches with LSU on Oct. 29 and Mississippi State on Nov. 3 ... Posted 22 assists and 13 digs on the Tigers before putting up 12 helpers and 10 digs versus the Bulldogs ... Played in all three games against Loyola (Md.) in her first appearance of the season Aug. 26 and made 19 assists ... Recorded at least 10 assists in six consecutive contests beginning Oct. 27 when the Gamecocks hosted Arkansas ... Assisted on 23 kills versus the Lady Razorbacks, her second-highest total of the season ... After her two double-doubles against LSU and MSU, Lorenzi piled up 16, 10 and 19 assists against Mississippi, Kentucky and Tennessee on Nov. 5, 10 and 12 ... Used primarily in the back row in South Carolina's last three contests.

2005 (FRESHMAN): Had 387 assists on the season as South Carolina's No. 2 setter ... Lorenzi's total placed her at 10th on South Carolina's career list ... Fell one dig shy of the century mark ... Played in 24 of the Gamecocks' 27 matches and 77-of-100 games ... Reached double figures in the assists category 15 times ... Did likewise in digs two times ... Had a pair of double-doubles that came in consecutive matches ... Her assists per game average was 5.03 ... Received her first dose of significant playing time at setter against Mercer on Sept. 3 when she notched 16 helpers ...

Assisted on at least 10 kills in 12 consecutive matches beginning with the University of Arkansas on Sept. 25 and ending versus Tennessee on Nov. 9 ... Posted a career-high 52 assists in the Oct. 30 Georgia contest ... Had a double-double against the Lady Bulldogs as well by adding 10 digs ... Tallied a career mark for total blocks versus Georgia with three ... Got the first double-double of her career two days earlier with 28 assists and a dozen digs versus Florida ... In the first match-up of the year with Tennessee on Oct. 26, Lorenzi had 41 assists and fell one dig short of a double-double ... Helped the Gamecocks to a 3-1 victory over Auburn on Oct. 16 thanks to 38 assists ... Gave South Carolina 36 assists in its 3-0 loss to Kentucky on Nov. 4 ... Her first 20-assist effort of the year came in South Carolina's first meeting with Alabama on Oct. 14 with 21 ... Her season-high in kills was two coming against Kentucky and Tennessee on Oct. 23 and 26.

HIGH SCHOOL: Graduated from Del Norte High School in Crescent City, Calif. ... Was coached by her mother, Deborah ... Was a three-sport athlete in volleyball, basketball and softball ... A four-time all-conference selection in volleyball and softball ... Named the 2003 and 2004 conference MVP in volleyball ... Was her team's 2004 MVP in softball ... Awarded a CIF-NCA Scholastic Scholar Athlete Award all four years of high school ... Was a member of four league-champion volleyball teams ... Helped lead her softball team to its first-ever conference championship ... Was Del Norte's volleyball captain for two years.

PERSONAL: A political science major ... Full name is Petra Lorenzi ... Parents are Pablo and Deborah Lorenzi ... Her birthday is Sept. 17, 1986 ... Has one younger brother, Brandon, and her older brother is Nathan.



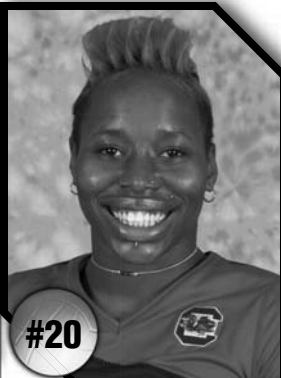
CAREER STATISTICS

| YEAR | MP | GP | KILL | K/G | ERR | ATT | PCT | AST | A/G | SA | SE | SA/G | RE | DIG | D/G | BS | BA | TB | B/G | BE | BHE |
|--------------|-----------|------------|----------|-------------|-----------|-----------|--------------|------------|-------------|-----------|-----------|-------------|----------|------------|-------------|----------|-----------|-----------|-------------|----------|-----------|
| 2005 | 24 | 77 | 7 | 0.09 | 8 | 42 | -.024 | 387 | 5.03 | 5 | 15 | 0.06 | 3 | 99 | 1.29 | 4 | 10 | 14 | 0.18 | 1 | 38 |
| 2006 | 32 | 51 | 2 | 0.04 | 4 | 10 | -.200 | 200 | 3.92 | 5 | 4 | 0.10 | 0 | 66 | 1.29 | 0 | 4 | 4 | 0.08 | 3 | 19 |
| TOTAL | 56 | 128 | 9 | 0.07 | 12 | 52 | -.058 | 587 | 4.59 | 10 | 19 | 0.08 | 3 | 165 | 1.29 | 4 | 14 | 18 | 0.14 | 4 | 57 |



2006 LETTERWINNER

GAMECOCKS



BELITA SALTERS

6-1 • Redshirt Junior-2L
Middle Blocker
Scranton, S.C.
(Lake City H.S.)

CAREER HIGHS

| | |
|------------------------------|------------------------------|
| Kills | 11, 2x, last LSU (9/22/06) |
| Attacks | 24, Auburn (9/15/06) |
| Hitting Pct. (Min. 12 Kills) | N/A |
| Assists | 3, Texas A&M-C.C. (8/26/06) |
| Service Aces | 3, 2x, last Auburn (9/15/06) |
| Digs | 5, 2x, last Auburn (9/15/06) |
| Block Solos | 2, last Tennessee (10/6/06) |
| Block Assists | 10, North Carolina (9/10/05) |
| Total Blocks | 11, North Carolina (9/10/05) |

2006 (REDSHIRT SOPHOMORE): Played in all 32 matches after seeing limited playing time as a redshirt freshman the year before ... Started all but three contests as well ... Finished third on the team in total kills with 202 and was fifth in kills per game at 1.77 ... Was South Carolina's most dangerous blocker, leading the squad with 104 total blocks and a 0.91 per game average ... Reached double figures in the kills column three times ... Had at least one kill in every match ... Salters' streak of 35 consecutive matches with at least one block was halted by the Tennessee Lady Volunteers on Nov. 12 ... Recorded a block in 29-of-32 matches on the year ... Started strong in the Gamecocks' first 13 matches by averaging 1.82 kills per game while hitting .350 (91-28-180) and making 1.08 blocks per game ... Her energy and presence on the court played a strong factor in South Carolina winning the Big Orange Bash tournament in Clemson, S.C., with a perfect 4-0 record ... Her 1.86 kills and 0.86 blocks per game over the course of the event earned Salters a spot on the All-Tournament Team ... In the Gamecocks' first match after winning the Big Orange Bash, Salters had her first double-digit kill outing with 10 against St. John's on Sept. 8 ... The Sept. 15 SEC opener versus Auburn was perhaps Salters' best performance of the year ... Chipped in 11 kills, three aces, five digs and six blocks in a thrilling 3-2 victory for the Gamecocks ... Tallied her third double-figure kill outing at LSU on Sept. 22 with 11 ... Had a very efficient evening at Mississippi State on Nov. 3 with seven kills on eight attempts with no hitting misfires ... Recorded a .467 hitting percentage at Alabama on Nov. 17 thanks to eight kills on 15 tries and only one error.

2005 (REDSHIRT FRESHMAN): Demonstrated a great knack for blocking balls ... Totaled 51 blocks in just 37 of South Carolina's 100 games for an average of 1.38 per game ... Her average rated as the seventh-highest figure in school history ... Compiled 46 kills for 1.24 kills per game ... Notched a pair of contests in which she recorded at least 10 blocks ... Had a career-

high 11 total blocks in the Gamecocks' 3-1 victory over North Carolina on Sept. 10 ... Also posted four kills on the Tar Heels ... Tallied 10 blocks in a Nov. 11 win against Auburn while adding six kills ... Ripped five kills and blocked five attacks in the Oct. 28 Florida match ... Established her high mark of the season with eight kills against Georgia on Oct. 30 ... Rejected six Lady Volunteer attempts in the Gamecocks' second meeting of the season with the Tennessee on Nov. 9 ... Saw her hitting percentage improve in South Carolina's last three matches, racking up 22 kills on 47 attacks with nine errors for a .277 mark ... Tied her season-best with eight kills in the Gamecocks' five-game triumph over Alabama on Nov. 13 ... Had eight kills on 14 attempts with just three errors versus Winthrop on Nov. 26.

2004 (FRESHMAN): Took a redshirt.

HIGH SCHOOL: Attended Lake City High School in Lake City, S.C. ... Four-year letterwinner in volleyball, track and field and basketball ... Named her school's Most Valuable Player for volleyball in 2003 and 2004 ... Was a member of the CAWS All-State and All-Star Teams ... A four-time state champion in the triple jump and won a state championship in the hurdles ... Selected to the all-region team four straight years in track and field.

PERSONAL: Is a media arts major at South Carolina ... Full name is Belita Kamethia Salters ... Born June 20, 1985, in Florence, S.C. ... Her parents are Lillie and Leo McCray ... Her sister, Theris Salters, played basketball for UNC Greensboro.



CAREER STATISTICS

| YEAR | MP | GP | KILL | K/G | ERR | ATT | PCT | AST | A/G | SA | SE | SA/G | RE | DIG | D/G | BS | BA | TB | B/G | BE | BHE |
|--------------|-----------|------------|------------|-------------|------------|------------|-------------|-----------|-------------|-----------|-----------|-------------|----------|-----------|-------------|-----------|------------|------------|-------------|-----------|-----------|
| 2005 | 13 | 37 | 46 | 1.24 | 33 | 126 | .103 | 2 | 0.05 | 0 | 0 | 0.00 | 1 | 12 | 0.32 | 3 | 48 | 51 | 1.38 | 6 | 3 |
| 2006 | 32 | 114 | 202 | 1.77 | 97 | 456 | .230 | 15 | 0.13 | 11 | 16 | 0.10 | 1 | 36 | 0.32 | 14 | 90 | 104 | 0.91 | 16 | 7 |
| TOTAL | 45 | 151 | 248 | 1.64 | 130 | 582 | .203 | 17 | 0.11 | 11 | 16 | 0.07 | 2 | 48 | 0.32 | 17 | 138 | 155 | 1.03 | 22 | 10 |



GAMECOCKS



SARAH CLINE

5-7 • Sophomore-1L
Def. Spec./Outside Hitter
Rock Hill, S.C.
(Northwestern H.S.)

#4

CAREER HIGHS

| | |
|------------------------------|-------------------------------------|
| Kills | 1, College of Charleston (11/22/06) |
| Attacks | 4, Alabama (11/17/06) |
| Hitting Pct. (Min. 12 Kills) | N/A |
| Assists | 3, 2x, last Auburn (10/22/06) |
| Service Aces | 1, 11x, last Alabama (11/17/06) |
| Digs | 17, LSU (10/29/06) |
| Block Solos | N/A |
| Block Assists | N/A |
| Total Blocks | N/A |

2006 (FRESHMAN): A walk-on who played in all 32 of the Gamecocks' matches and made 11 starts ... Member of the SEC Freshmen Academic Honor Roll ... Started at libero in four contests ... Started the final five matches of the season ... Finished fourth on the team in total digs with 214 ... Her 1.86 digs per game ranked fifth for the Gamecocks ... Upped her digs per game average to 2.16 in conference matches ... Reach double digits in the digs category eight times ... Was South Carolina's second-most accurate server with a 95.2 percent figure ... One of the Gamecocks' top receivers on serves as well, with a 94 percent success rate that rated third ... Had the first 10-plus-dig effort of her career in an Aug. 31 win at Clemson with 10 saves ... Did not miss a serve on her 10 tries versus the Tigers as well ... Made her first career start the

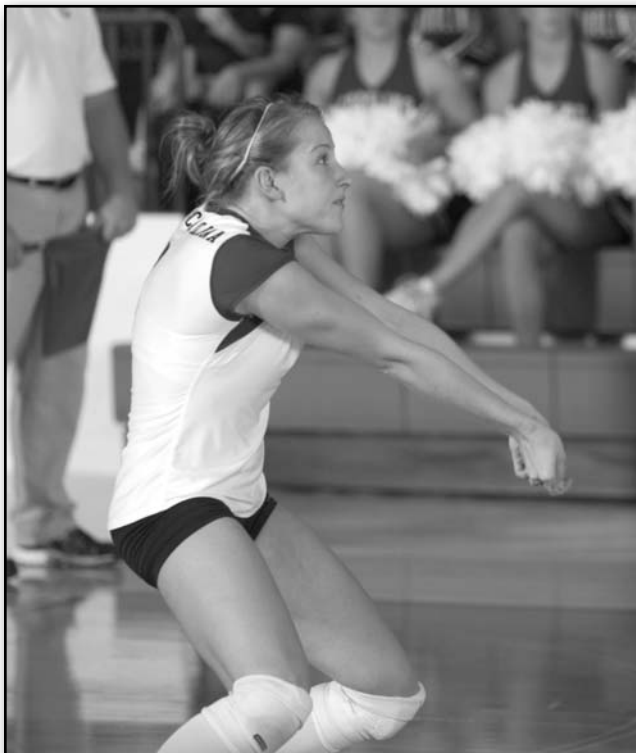
following day against Tennessee State and connected on 17-of-18 service reception attempts ... Played an important role in South Carolina's 3-2 win against Auburn on Sept. 15 by recording 11 digs and going 11-for-11 and 15-for-15 on service returns and attempts ... Had just one miss on the 21 balls served her way when the Gamecocks stunned then-No. 6 Florida 3-1 to snap a 25-match losing streak to the Gators ... Posted her third double-figure dig outing of the season with 10 against Alabama on Oct. 1 ... Did not miss a serve or return versus the Crimson Tide either ... Had a stretch from Sept. 24 to Oct. 15 where she returned 70 serves without an error ... Against Mississippi State on Oct. 15, Cline had 14 digs ... It also was the first of three straight matches with at least a dozen defensive saves ... Tallied 12 at Florida on Oct. 20 in the second match and followed with 13 at Auburn on Oct. 22 ... Posted a career-high with 17 digs in a 3-1 home loss to LSU on Oct. 29 ... The Tigers served 48 balls her way and Cline missed on just one ... Ended her season with 13 digs versus College of Charleston on Nov. 22.

HIGH SCHOOL: Named the South Carolina High School Volleyball State 4A Region 3 Player of the Year in 2005 ... Also earned a place on the all-state team as a senior ... Nabbed a spot on the South Carolina 4A All-Region 3 Team following her junior season ... Her club team, Carolina Juniors 18 Slam coached by Jen Adeva, won the 2006 USA Volleyball Junior Olympics 18-Under Tournament ... Named to the USA Volleyball Junior Olympics 18-Under National All-Tournament Team ... Served as the captain for Northwestern High School's volleyball team as a junior



and senior ... Won the 2006 Tommy Miller Award ... Garnered recognition from USA Volleyball when she was chosen for its All-Region Team in 2006 ... Selected for an Army Reserve National Scholar-Athlete Award ... A Palmetto Fellows Scholarship recipient ... Also chosen as a University Scholar ... Graduated with highest honors from Northwestern High ... A member of National Honor Society.

PERSONAL: An exercise science major at South Carolina ... Full name is Sarah Kathryn Cline ... Born June 16, 1988, in Lancaster, S.C. ... Her parents are David and Laura Cline ... Has an older brother, Andrew, who is a senior at South Carolina.



CAREER STATISTICS

| YEAR | MP | GP | KILL | K/G | ERR | ATT | PCT | AST | A/G | SA | SE | SA/G | RE | DIG | D/G | BS | BA | TB | B/G | BE | BHE |
|--------------|-----------|------------|----------|-------------|----------|-----------|--------------|-----------|-------------|-----------|-----------|-------------|-----------|------------|-------------|----------|----------|----------|-------------|----------|----------|
| 2006 | 32 | 115 | 1 | 0.01 | 8 | 20 | -.350 | 25 | 0.22 | 11 | 15 | 0.10 | 29 | 214 | 1.86 | 0 | 0 | 0 | 0.00 | 1 | 1 |
| TOTAL | 32 | 115 | 1 | 0.01 | 8 | 20 | -.350 | 25 | 0.22 | 11 | 15 | 0.10 | 29 | 214 | 1.86 | 0 | 0 | 0 | 0.00 | 1 | 1 |



2006 LETTERWINNER

GAMECOCKS



#1

IVANA KUJUNDZIC

6-1 • Sophomore-1L
Outside Hitter
Subotica, Serbia
(Bosa Milicevic)

CAREER HIGHS

| | |
|------------------------------|--|
| Kills | 10, Mississippi (10/13/06) |
| Attacks | 21, Auburn (10/22/06) |
| Hitting Pct. (Min. 12 Kills) | N/A |
| Assists | 3, Alabama (10/1/06) |
| Service Aces | 4, TCU (8/25/06) |
| Digs | 6, College of Charleston (11/22/06) |
| Block Solos | 1, 5x, last Mississippi State (10/15/06) |
| Block Assists | 8, 2x, last Tennessee (11/12/06) |
| Total Blocks | 8, 2x, last Tennessee (11/12/06) |

2006 (FRESHMAN): Played in all but two matches for South Carolina and made 17 starts ... A member of the SEC Freshmen Academic Honor Roll ... Averaged close to one kill per game for the year ... Her 0.86 blocks per game was second on the team to Belita Salters ... Led the Gamecocks in blocks during SEC matches with a 1.07 average ... Also increased her kills per game to 1.15 for league contests ... Served up a season-high four aces in her first career match at TCU on Aug. 25 ... Became a major factor for the Gamecocks when it came time to play Southeastern Conference schools ... Made eight kills and just one hitting error on 10 attempts in a 3-0 win over Georgia on Sept. 27 in Athens, Ga. ... Had six block assists against the Bulldogs as well ... Kujundzic played some of her best volleyball of the year beginning with the Georgia match ... Over a five-match span from Sept. 27 to Oct. 13, she averaged 1.79 kills and hit .344 (34-12-64) ... She was easily the

Gamecocks' best blocker during that timeframe as well, averaging 1.26 blocks per game ... Against Mississippi on Oct. 13, Kujundzic had her first and only double-digit kill outing of the year when she tallied 10 in a 3-1 South Carolina victory ... Was crucial in helping the Gamecocks escape with a 3-2 win at Auburn on Oct. 22 ... Kujundzic posted eight kills in the five-game match and made eight block assists ... Her serving was key, taking a season-high 25 attempts with no errors and three aces ... Her presence as a blocker factored into South Carolina's 3-1 victory over Tennessee on Nov. 10 that snapped a seven-match losing streak to the Lady Volunteers ... She contributed eight block assists in the contest to equal her best of the year.

HIGH SCHOOL: Was a late addition to the Gamecocks' volleyball roster, officially joining South Carolina in late July 2006 ... Played for the highly respected Spartak

Volleyball Club in her hometown of Subotica, Serbia ... Attended the Bosa Milicevic Secondary School of Economics.

PERSONAL: Pursuing a degree in psychology ... Kujundzic's date of birth is Sept. 7, 1987 ... Her parents are Josip and Stanka Kujundzic.



CAREER STATISTICS

| YEAR | MP | GP | KILL | K/G | ERR | ATT | PCT | AST | A/G | SA | SE | SA/G | RE | DIG | D/G | BS | BA | TB | B/G | BE | BHE |
|-------|----|----|------|------|-----|-----|------|-----|------|----|----|------|----|-----|------|----|----|----|------|----|-----|
| 2006 | 30 | 99 | 88 | 0.89 | 43 | 240 | .188 | 9 | 0.09 | 21 | 28 | 0.21 | 0 | 59 | 0.60 | 5 | 80 | 85 | 0.86 | 3 | 3 |
| TOTAL | 30 | 99 | 88 | 0.89 | 43 | 240 | .188 | 9 | 0.09 | 21 | 28 | 0.21 | 0 | 59 | 0.60 | 5 | 80 | 85 | 0.86 | 3 | 3 |



GAMECOCKS



#13

MEREDITH MOORHEAD

6-1 • Sophomore-1L
Outside Hitter
Charlotte, N.C.
(Providence Senior H.S.)

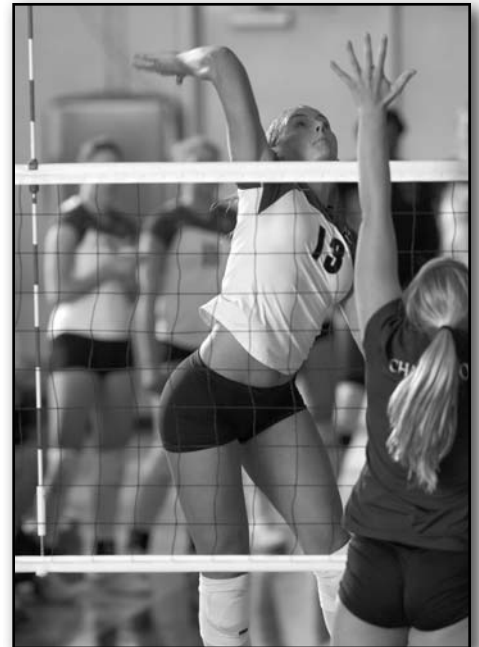
CAREER HIGHS

Kills 15, 2x, last Alabama (11/17/06)
Attacks 39, Alabama (11/17/06)
Hitting Pct. (Min. 12 Kills)520 (15-2-25),
 Kentucky (11/10/06)
Assists 3, 2x, last College of Charleston (11/22/06)
Service Aces 2, 4x, last Tennessee (11/12/06)
Digs 12, Alabama (11/17/06)
Block Solos N/A
Block Assists 5, 2x, last Mississippi (11/5/06)
Total Blocks 5, 2x, last Mississippi (11/5/06)

2006 (FRESHMAN): Named to the SEC Freshmen Academic Honor Roll ... Became one of the Gamecocks' top attackers by the end of the season ... Finished fourth on the team in kills per game with a 1.82 average ... Made nine starts and played in all but four of the Gamecocks' 32 matches ... Possessed one of the most powerful serves on the team ... Displayed solid passing skills, returning 92.2 percent of the serves that fell her way ... Reached double figures in the kills column five times, three of which came in the South Carolina's final five contests of the year ... Had at least 10 digs in two matches ... Posted one double-double performance ... Moorhead's season-high in kills was 15 on two separate occasions ... Played an important role in a 3-2 victory at Clemson on Aug. 31, providing four kills and two aces in game four to push the match into a fifth game ... Finished the night with six kills

and missed only one service return on 22 attempts ... Reached double figures in kills for the first time in her career versus Florida State on Sept. 9 in the Gamecock Invitational with 11 ... Made five assisted blocks at Arkansas on Sept. 24, her best of the season that was later equaled at Mississippi on Nov. 5 ... Moorhead was South Carolina's second-most productive offensive threat over the course of the final eight matches ... Averaged 2.73 kills per game while contributing 1.47 digs and 0.73 blocks per game over the eight-match timeframe ... Her numbers were 1.33 kills, 0.65 digs and 0.16 blocks per game in the previous 20 matches in which she played ... Her hitting percentage increased dramatically as well, going from .086 (73-51-255) to .206 (82-38-214) ... Had the third-highest hitting percentage in school history in a five-game match against Kentucky on Nov. 10 with a .520 clip thanks to 15 kills on 25 attacks with just two errors ... A key factor in South Carolina's 3-1 win over Tennessee on Nov. 12 with 12 kills, snapping a seven-match losing streak to the Lady Volunteers ... Her first career double-double came at Alabama on Nov. 17 with 15 kills and 12 digs ... Posted 10 digs in the match prior with Georgia on Nov. 15.

HIGH SCHOOL: Played for Providence High School in Charlotte, N.C., for coach Zoe Bell ... Was a 2005 PrepVolleyball.com All-America selection ... The Web site also listed Moorhead as one of its Top 100 Senior Aces ... Helped her school win the 2002, 2004 and 2005 state 4A championships ... An all-state performer her junior and senior years ... Tabbed the 2005 *Charlotte Observer* Player of the Year ... Her club team, Carolina Juniors 18 Slam, won the 2006 USA Volleyball Junior Olympics 18-Under National Tournament ... Named the USA Volleyball Junior Olympic 18-



Under National Tournament MVP ... Earned recognition from Mecklenburg County as its Player of the Year and she made the All-County squad ... Took home MVP honors from the 2005 4A state championship match ... Received the same accolade following the Southwestern 4A Conference Tournament ... Was the MVP at the North Carolina Great 8 Tournament ... A nominee for the Wendy's High School Heisman her senior season ... Garnered Providence High School Player of the Week honors from the *News-Record* as a senior ... Voted by her classmates as most athletic her senior year ... Moorhead was a member of Providence High's A/B Honor Roll all four years of school.

PERSONAL: Has plans to major in business ... Was born in Columbia, S.C., on Feb. 15, 1988 ... Her parents are Scott and Sharie Moorhead ... Has one sister, Margaret ... Her full name is Meredith Erin Moorhead.



CAREER STATISTICS

| YEAR | MP | GP | KILL | K/G | ERR | ATT | PCT | AST | A/G | SA | SE | SA/G | RE | DIG | D/G | BS | BA | TB | B/G | BE | BHE |
|--------------|-----------|-----------|------------|-------------|-----------|------------|-------------|-----------|-------------|-----------|-----------|-------------|-----------|-----------|-------------|----------|-----------|-----------|-------------|----------|----------|
| 2006 | 28 | 85 | 155 | 1.82 | 89 | 469 | .141 | 17 | 0.20 | 12 | 26 | 0.14 | 20 | 80 | 0.94 | 0 | 31 | 31 | 0.36 | 4 | 2 |
| TOTAL | 28 | 85 | 155 | 1.82 | 89 | 469 | .141 | 17 | 0.20 | 12 | 26 | 0.14 | 20 | 80 | 0.94 | 0 | 31 | 31 | 0.36 | 4 | 2 |



2006 LETTERWINNER & RETURNER

GAMECOCKS



#11

CHRISTINE HAUER

6-0 • Sophomore-1L
Middle Blocker
Aiken, S.C.
(Aiken H.S.)

CAREER HIGHS

| | |
|------------------------------|---------------------------|
| Kills | 1, Loyola (Md.) (8/26/06) |
| Attacks | 1, Loyola (Md.) (8/26/06) |
| Hitting Pct. (Min. 12 Kills) | N/A |
| Assists | N/A |
| Service Aces | N/A |
| Digs | N/A |
| Block Solos | N/A |
| Block Assists | N/A |
| Total Blocks | N/A |

FRESHMAN (2006): Appeared in two matches on the season ... President's Honor Roll member after earning As in 14 classes ... Awarded the Mary M. Kennemur Business School Scholarship ... Founding member of Alpha Kappa Psi business fraternity ... Given a scholarship to study in China and Tibet for summer school during May 2007 ... A Moore School of Business freshmen orientation leader for summer 2007 ... Staff member at Strom Thurmond Health and Wellness Center ... Became a Certified Personal Trainer.

HIGH SCHOOL: Was coached by Gylton DaMatta, Chee Lee, Cindy Tucci and Rachel Julian Kapps ... Led Aiken High School to a first-place finish at the 2005 South Carolina 4A Regional State Championship ... A three-year letterwinner in volleyball ... Named Aiken's MVP her senior season ... Was a member of the South Carolina Volleyball All-Star Team while playing for the North-South Team ... Picked as the No. 1 player in her region for the squad ... Also tabbed MVP for her Junior Olympic team as a sophomore, junior and senior ... Earned Junior Olympics Regional First Team accolades as a senior ... Served as her high school team's captain her senior year

... Named to the all-state and all-region teams in 2004 and 2005 ... Hauer was on the 2005 USA Volleyball Open Championship team named BAMESO ... Participated in the Newberry International Ambassadors Program to Brazil ... Graduated with honors and was ranked eighth out of a class of 346 ... Was a South Carolina Palmetto Fellows Scholarship winner ... A USC-Aiken Scholar and Wendy's Heisman recipient ... Received the Rotary Club Student of Excellence Award ... Hauer was given the Thornwell Scholarship and was a finalist for one from the Aiken Junior Women's Club ... Was a Daughters of the American Revolution Scholar ... Served as vice president of Aiken Student Government for a year and held the same position in German Club and Future Business Leaders ... Was on Aiken High School Student Council for three years ... A member of National Honor Society ... Hauer was also a four-year member of Beta Club.

PERSONAL: Hauer plans to major in international business ... Was born Oct. 19, 1987, in Manchester, Conn. ... Her parents are Kim and Kathryn Hauer ... Has one brother, Patrick.

CAREER STATISTICS

| YEAR | MP | GP | KILL | K/G | ERR | ATT | PCT | AST | A/G | SA | SE | SA/G | RE | DIG | D/G | BS | BA | TB | B/G | BE | BHE |
|--------------|----------|----------|----------|-------------|----------|----------|--------------|----------|-------------|----------|----------|-------------|----------|----------|-------------|----------|----------|----------|-------------|----------|----------|
| 2006 | 2 | 2 | 1 | 0.50 | 0 | 1 | 1.000 | 0 | 0.00 | 0 | 0 | 0.00 | 0 | 0 | 0.00 | 0 | 0 | 0 | 0.00 | 0 | 0 |
| TOTAL | 2 | 2 | 1 | 0.50 | 0 | 1 | 1.000 | 0 | 0.00 | 0 | 0 | 0.00 | 0 | 0 | 0.00 | 0 | 0 | 0 | 0.00 | 0 | 0 |

GAMECOCKS



#22

CHANNING CANTRELL

6-0 • Redshirt Freshman-RS
Middle Blocker
Pickens, S.C.
(Pickens H.S.)



2006 (FRESHMAN): Redshirted as a true freshman.

HIGH SCHOOL: Was an accomplished three-sport athlete at Pickens High School ... An all-conference volleyball performer as a junior ... Named to the Border Bash All-Tournament Team in 2004 and 2005 ... Helped her school win the South Carolina State Volleyball 3A Championships in 2004 and 2005 ... A member of the 2005 all-state team ... Won Pickens High's Coach's Award for basketball her sophomore and senior years ... Was an all-region team member in 2005 and 2006 ... Snagged team MVP accolades following her junior season ... In track and field, Cantrell was the overall MVP for the county three consecutive years from 2003 to 2005 ... Earned the county MVP award four straight years for field events ... Won the county triple jump

and long jump two times, and the high jump three times ... Claimed the regional titles for the triple jump and long jump as a junior ... Finished third at the state meet in the triple jump in 2005 and was fourth the following year ... Tabbed Pickens' 2004 and 2005 MVP ... Placed fifth at state in the discus her senior season ... Made the A honor roll all through high school ... Graduated with honors and was third in her senior class ... A Converse Junior Scholar recipient ... Received a Palmetto Fellows Scholarship from South Carolina.

PERSONAL: Enrolled in the nursing program at South Carolina ... Full name is Channing Noel Cantrell ... Born Dec. 24, 1987 ... Her parents are Stan Cantrell and Debby Eddins ... Has one sister, Crystal.



GAMECOCKS



#3

DANI BEDORE

**5-9 • Freshman-HS
Outside Hitter/Setter
Goodland, Kan.
(Brewster H.S.)**

HIGH SCHOOL: Played volleyball all four years during her tenure at Brewster High School ... Lettered in basketball three years and earned another two in track and field ... Made the all-state team her freshman, sophomore and senior years ... Was a first-team all-area selection in 2003, 2004 and 2006 ... Earned a place on the all-conference first team following her freshman, sophomore and senior seasons ... Snagged all-region team accolades as a club volleyball player five straight years from 2002 to 2006 ... Her club volleyball squad qualified for the Junior Olympics National Championship Open Division four straight years starting in 2004 ... Her basketball honors included all-league praise in 2004, 2005 and 2006, as well as the all-state team those same years ... She also picked up second-team all-area recognition as a freshman, sophomore and junior ... Qualified for the state track and field meet in the long jump and triple jump her freshman year ... A member of Brewster's state meet-qualifying 4x100-meter relay squad in 2005 ... Listed on her high school's academic honor roll all four years.

PERSONAL: Full name is Danielle Jo Bedore ... Born Feb. 9, 1989, in Colby, Kan. ... Her parents are Dustin and Barb Bedore ... Has two other siblings, Jordan and Taryn ... Plans to study elementary education.

GAMECOCKS



#5

JORDAN BRADOSKY

**5-9 • Freshman-HS
Setter
Centerville, Ohio
(Centerville H.S.)**

HIGH SCHOOL: Played four years of varsity volleyball at Centerville High School ... Was the starting setter for Centerville all four years ... Named team MVP as a sophomore, junior and senior ... Led her squad to sectional championships in 2004 and 2006 ... A member of the Greater Western Ohio All-Conference First Team in 2004, 2005 and 2006 ... Selected as the GWOC Player of the Year as a sophomore ... As a senior, Bradosky was picked as the overall GWOC Athlete of the Year ... Was a GWOC Scholar Athlete each of her final three years of school ... A first-team all-district pick as a sophomore, junior and senior ... Tabbed district player of the year in 2005 and 2006 ... Made the All-Ohio Division I Team in 2004, 2005 and 2006 ... Holds the state record for service aces in a match at 23 ... Is second on the list for most aces as well with 18 ... Chosen as one of PrepVolleyball.com's top 60 freshmen in the nation ... The Web site made her a top-80 sophomore and she was a top-200 senior as well ... Starting setter for the 15-1 and 16-1 Dayton Juniors club ... Went on to become the starting setter for the 17-1 and 18-1 Cincy Classics club ... Picked as a setter for a High Performance team that represented the Ohio Valley

Region in international competition in Texas in 2005 ... Competed in three Junior Olympic National Championships ... Played for the winning club team in the Junior Olympics U-17 American Division prior to her senior year of high school ... Earned a place on the 2006 Junior Olympic National Championship All-Tournament Team and was named Most Valuable Player ... Finished runner-up for the Rae Burick Women in Sports Award, a prestigious honor with criteria that combines athletic and academic accomplishments for female student-athletes among 71 regional high schools ... Graduated from Centerville H.S. with a 3.74 GPA ... A member of National Honor Society and Fellowship of Christian Athletes ... Active in church youth group projects, mission support and study ... A passionate participant of American Sign Language Club.

PERSONAL: Full name is Jordan Ashley Bradosky ... Born Oct. 29, 1988, in Canton, Ohio ... Her parents are John and Kristi Bradosky ... Plans to major in sport and entertainment management ... Has an older sister, Jessica, who played outside hitter for Delaware ... Her older brother, Jacob, runs cross country at Wright State ... Her hobbies include beach volleyball, scuba diving, skiing and boarding.

GAMECOCKS



#12

ERIN KENNEDY

**5-9 • Freshman-HS
Outside Hitter/
Middle Blocker
Charleston, S.C.
(West Ashley H.S.)**

HIGH SCHOOL: Played volleyball during all four years of high school at West Ashley ... Was on the basketball team her freshman and sophomore years ... Helped West Ashley win the 2005 South Carolina State 4A Volleyball Championship ... Team finished as runner-up her senior year ... An all-region selection each year and earned region player of the year in 2005 and 2006 ... Made the all-state team in 2005 and 2006 ... Received third-team academic All-America praise in 2006 ... Honorable mention All-America pick following her senior season ... Earned a spot on the All-Low Country Teams in 2005 and 2006 ... Chosen for the North-South All-Star Game as a senior ... Named West Ashley's MVP after her freshman and senior campaigns ... Listed on the *High School Sports Report* All-State Team ... A member of the West Ashley All-Tournament Teams in 2004, 2005 and 2006 ... Her performance at the Dorman Tournament of Champions was good for a place on the event's All-Tournament Team as a junior and senior ... Other all-tournament honors Kennedy compiled during her prep career included Chapel Hill (2006) and Wando (2004, 2005 and 2006) ... National Honor Society member for three years ... Three-year member of Beta Club as well ... Active in the community service club Interact ... A Board Scholar (4.25 GPA and higher) every year at West Ashley ... On the 1100 and higher SAT "Wall of Fame" at her high school ... Ranked sixth in her class of 427 students ... Graduated with a 4.45 GPA ... A Junior Marshal for her graduating class ... Part of the yearbook staff for three years and served as editor her senior year.

PERSONAL: Full name is Erin Lyn Kennedy ... Born March 4, 1989, in Charleston, S.C. ... Her parents are Jaima and Lynn Kennedy ... Her twin sister, Jordan, is a member of the Gamecock volleyball team ... Also has another sister, Tanner, and a brother, Matthew ... Tanner played volleyball for Stetson ... Considering a degree in arts or media arts ... Has a passion for sculpting.

MEET THE 2007 GAMECOCKS



GAMECOCKS



#7

JORDAN KENNEDY

**5-10 • Freshman-HS
Middle Blocker/
Outside Hitter
Charleston, S.C.
(West Ashley H.S.)**

HIGH SCHOOL: Played volleyball during her entire career at West Ashley High School, but her senior year was cut short when she tore her ACL ... Was on the basketball team for three years ... Helped West Ashley win the 2005 South Carolina State 4A Volleyball Championship ... Team finished as runner-up her senior year ... Made the all-state team as a junior and senior ... A member of the all-region team in 2004 and 2005 ... As a junior, Kennedy made the All-Low Country Team ... Selected by *High School Sports Report* for inclusion on its 2005 and 2006 All-State Team ... Played in the North-South All-Star Game in 2006 ... Her club volleyball team was Charleston Juniors ... The squad qualified for nationals twice during her three years with the team ... A member of National Honor Society and Beta Club ... Was a Junior Marshal for her graduating class ... Ranked 25th out of a graduating class of 427 students ... Her final GPA was 4.07 ... On the yearbook staff as a sophomore, junior and senior ... Served as the sports editor her senior year ... Performed in "Little Shop of Horrors" and was part of the sound crew for "The Wiz."

PERSONAL: Full name is Jordan Elizabeth Kennedy ... Born March 4, 1989, in Charleston, S.C. ... Her parents are Jaima and Lynn Kennedy ... Her twin sister, Erin, is a member of the Gamecock volleyball team ... Also has another sister, Tanner, and a brother, Matthew ... Tanner played volleyball for Stetson.

GAMECOCKS



#6

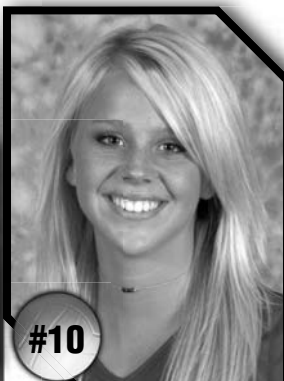
HANNAH LAWING

**5-9 • Freshman-HS
Outside Hitter
Marietta, Ga.
(Lassiter H.S.)**

HIGH SCHOOL: A four-year letterwinner in volleyball at Lassiter High School ... Made the all-state team ... Tabbed the Area 1 State 5A Player of the Year ... Earned a place on the *Marietta Daily Journal* and *The Atlanta Journal-Constitution's* All-Cobb County First Team ... A member of the all-area and all-region first teams ... Recorded the most kills in the state of Georgia one season with 568 ... Region player of the year ... An All-America selection by PrepVolleyball.com ... Chosen as a Defensive Dandy playing club volleyball ... Listed as one of PrepVolleyball.com's Top 150 Senior Aces ... Graduated from Lassiter with honors ... Was a member of German Honor Society.

PERSONAL: Full name is Hannah Marie Lawing ... Born Dec. 26, 1988, in Winston-Salem, N.C. ... Her parents are Joe and Barbara Bennett-Paris ... Has one sister, Katie ... Plans to major in exercise science.

GAMECOCKS



#10

MEGAN LAUGHLIN

**6-1 • Freshman-HS
Middle Blocker
Cornell, Ill.
(Flanagan H.S.)**

HIGH SCHOOL: Earned four letters in volleyball, basketball and track and field while attending Flanagan High School ... Her club volleyball team placed third at the 2006 Amateur Athletic Union Championships ... Served as the team's captain ... A unanimous first-team all-conference pick her sophomore, junior and senior years ... Made the *Pantagraph* All-Area First Team in 2004 ... The *Streator Times-Press* chose her for its All-Area First Team the same year as well ... As a junior, Laughlin was selected to the Iroquois West All-Tournament Team and landed on the *Champaign News-Gazette* Special Mention All-State Team ... Snagged *Pantagraph* and *Streator Times-Press* All-Area First Team accolades in 2005 ... Named Flanagan's Most Improved Player following her junior campaign ... Achieved All-Tournament recognition at the Iroquois West and Effingham Tournaments in 2006 ... In addition to making the *Pantagraph* All-Area First Team for a third consecutive year as a senior, she was named the newspaper's Player of the Year ... After she graduated, Laughlin earned the distinction of *Pantagraph* Female Athlete of the Year ... Garnered



2007 FRESHMEN & TEAM PHOTO



GAMECOCKS



LISA SHELLEY

**5-10 • Freshman-HS
Outside Hitter
Columbia, S.C.
(Blythewood H.S.)**

#2

HIGH SCHOOL: Earned five varsity letters playing volleyball and one in basketball ... Was the 2006 3A/4A South Carolina All-State All-Star Team MVP ... In addition to making the all-area team her senior year, Shelley earned area player of the year honors ... A 2006 Wendy's High School Heisman nominee ... Region MVP for class 3A as a senior after leading Blythewood to the region championship with a 24-1 record ... Chosen for the *High School Sports Report* All-State Team four consecutive years from 2003 to 2006 ... Was Blythewood's MVP as a junior and senior ... While attending Cardinal Newman High School for her freshman and sophomore years, Shelley snagged team MVP honors as well ... Was the South Carolina Independent School Association Player of the Year in 2003 and 2004 ... A member of the SCISA All-State All-Star Team her freshman and sophomore years of high school ... In club volleyball, her team Club South 18N finished fourth at the Big South Tournament and was Palmetto Region champs ... Club South 16N placed 11th at the Salt Lake City Junior Olympics after winning the Palmetto Region ... A member of National Honor Society and a Life Scholarship recipient from South Carolina ... A member of the state's Teaching Fellows Program, whose aim is to recruit talented high school seniors into the teaching profession and help them develop leadership qualities.

PERSONAL: Full name is Lisa Marie Shelley ... Born Nov. 11, 1988, in Columbia, S.C. ... Her parents are Mark and Teresa Shelley ... Has one brother, Paul, and one sister, Vickie ... Plans to major in elementary education.

GAMECOCKS



ANNIE THOMAS

**6-0 • Freshman-HS
Outside Hitter/
Middle Blocker
Harvard, Ill.
(Harvard H.S.)**

#18

HIGH SCHOOL: A four-year letterwinner in volleyball at Harvard High School ... Played for the varsity team for three years ... A unanimous All-Big Northern Conference selection as a junior and senior ... Led Harvard High to third- and fifth-place finishes at the state tournament ... Captain of her team for 2005 and 2006 ... Tabbed the team's Most Valuable Player ... Led Harvard in kills her junior and senior seasons ... Selected Player of the Week three times during her career by the *Northwest Herald* ... Made the Stillman Valley All-Tournament Team twice during her career ... Received Harvard's Most Coachable award following her freshman campaign ... Played club volleyball for Club Fusion ... Squad finished third at the 2004 USA Junior Olympic Championships playing in the National Division of the 15s ... Picked for the All-Tournament Team that same year ... In 2005, Club Fusion placed second in the Open Division 16s of the JOC, and Thomas earned JOC All-Tournament Team recognition again ... Club Fusion took home the runner-up trophy in the Open Division 17s in 2006 as well ... Also played softball her freshman year ... Voted most athletic by her classmates as a senior, as well as most likely to be famous ... An IHSA Scholastic Achievement Award winner ... A 2005 and 2006 All-Big Northern Conference Scholar Athlete choice ... Listed on the Harvard Honor Roll all four years of high school.

PERSONAL: Full name is Anne Mae Thomas ... Born Oct. 18, 1988 in Rockford, Ill. ... Her parents are Tom and Julie Thomas ... Has one brother, Scott, and a sister, Renee ... Has plans to major in visual communications.



THE 2007 GAMECOCKS

Front (L-R): Jordan Bradosky, Sarah Cline, Dinelia Concepcion, Petra Lorenzi, Hannah Lawing
Middle (L-R): Dani Bedore, Annie Thomas, Jordan Kennedy, Erin Kennedy, Christine Hauer, Lisa Shelley
Back (L-R): Megan Laughlin, Ivana Kujundzic, Belita Salters, Meredith Moorhead, Channing Cantrell



CAREER MATCH-BY-MATCH STATISTICS

SARAH CLINE – 2006

| DATE | OPPONENT | GP | KILL | ERR | ATT | PCT | AST | SA | SE | RE | DIG | BS | BA | BE | TB | BHE |
|--------------|-----------------------|------------|----------|----------|-----------|--------------|-----------|-----------|-----------|-----------|------------|----------|----------|----------|----------|----------|
| Aug. 25 | vs Boise State | 2 | 0 | 0 | 0 | .000 | 0 | 0 | 0 | 0 | 0 | 0 | 0 | 0 | 0 | 0 |
| Aug. 25 | at TCU | 4 | 0 | 0 | 1 | .000 | 1 | 0 | 0 | 1 | 2 | 0 | 0 | 1 | 0 | 0 |
| Aug. 26 | vs Loyola (Md.) | 1 | 0 | 0 | 0 | .000 | 0 | 0 | 0 | 0 | 1 | 0 | 0 | 0 | 0 | 0 |
| Aug. 26 | vs Texas A&M-C.C. | 2 | 0 | 0 | 0 | .000 | 0 | 1 | 1 | 0 | 4 | 0 | 0 | 0 | 0 | 0 |
| Aug. 31 | at Clemson | 5 | 0 | 0 | 0 | .000 | 1 | 0 | 1 | 0 | 10 | 0 | 0 | 0 | 0 | 0 |
| Sept. 1 | vs Charlotte | 3 | 0 | 0 | 1 | .000 | 0 | 0 | 0 | 1 | 7 | 0 | 0 | 0 | 0 | 0 |
| Sept. 1 | vs Tennessee State | 4 | 0 | 0 | 0 | .000 | 0 | 0 | 0 | 1 | 8 | 0 | 0 | 0 | 0 | 0 |
| Sept. 2 | vs Western Carolina | 3 | 0 | 1 | 1 | -1.000 | 1 | 0 | 0 | 1 | 1 | 0 | 0 | 0 | 0 | 0 |
| Sept. 8 | ST. JOHN'S | 5 | 0 | 1 | 1 | -1.000 | 0 | 0 | 0 | 3 | 0 | 0 | 0 | 0 | 0 | 0 |
| Sept. 8 | SOUTHERN CALIFORNIA | 3 | 0 | 0 | 0 | .000 | 0 | 0 | 0 | 1 | 3 | 0 | 0 | 0 | 0 | 0 |
| Sept. 9 | FLORIDA STATE | 5 | 0 | 0 | 0 | .000 | 2 | 1 | 0 | 5 | 5 | 0 | 0 | 0 | 0 | 0 |
| Sept. 15 | AUBURN | 4 | 0 | 0 | 1 | .000 | 3 | 1 | 0 | 0 | 11 | 0 | 0 | 0 | 0 | 1 |
| Sept. 17 | FLORIDA | 4 | 0 | 0 | 0 | .000 | 2 | 1 | 0 | 1 | 6 | 0 | 0 | 0 | 0 | 0 |
| Sept. 22 | at LSU | 3 | 0 | 0 | 0 | .000 | 0 | 0 | 0 | 0 | 7 | 0 | 0 | 0 | 0 | 0 |
| Sept. 24 | at Arkansas | 4 | 0 | 1 | 1 | -1.000 | 0 | 1 | 1 | 1 | 7 | 0 | 0 | 0 | 0 | 0 |
| Sept. 27 | at Georgia | 3 | 0 | 0 | 1 | .000 | 2 | 1 | 1 | 0 | 7 | 0 | 0 | 0 | 0 | 0 |
| Oct. 1 | ALABAMA | 5 | 0 | 1 | 1 | -1.000 | 1 | 1 | 0 | 0 | 10 | 0 | 0 | 0 | 0 | 0 |
| Oct. 6 | at Tennessee | 4 | 0 | 0 | 0 | .000 | 2 | 0 | 0 | 0 | 3 | 0 | 0 | 0 | 0 | 0 |
| Oct. 8 | at Kentucky | 3 | 0 | 0 | 0 | .000 | 1 | 0 | 1 | 0 | 9 | 0 | 0 | 0 | 0 | 0 |
| Oct. 13 | MISSISSIPPI | 4 | 0 | 0 | 0 | .000 | 0 | 1 | 0 | 0 | 8 | 0 | 0 | 0 | 0 | 0 |
| Oct. 15 | MISSISSIPPI STATE | 5 | 0 | 0 | 0 | .000 | 2 | 0 | 3 | 1 | 14 | 0 | 0 | 0 | 0 | 0 |
| Oct. 20 | at Florida | 3 | 0 | 0 | 0 | .000 | 1 | 1 | 1 | 1 | 12 | 0 | 0 | 0 | 0 | 0 |
| Oct. 22 | at Auburn | 5 | 0 | 2 | 2 | -1.000 | 3 | 0 | 2 | 2 | 13 | 0 | 0 | 0 | 0 | 0 |
| Oct. 27 | ARKANSAS | 3 | 0 | 2 | 2 | -1.000 | 1 | 0 | 0 | 0 | 7 | 0 | 0 | 0 | 0 | 0 |
| Oct. 29 | LSU | 4 | 0 | 0 | 1 | .000 | 0 | 1 | 1 | 1 | 17 | 0 | 0 | 0 | 0 | 0 |
| Nov. 3 | at Mississippi State | 3 | 0 | 0 | 0 | .000 | 0 | 0 | 0 | 0 | 4 | 0 | 0 | 0 | 0 | 0 |
| Nov. 5 | at Mississippi | 1 | 0 | 0 | 1 | .000 | 0 | 0 | 0 | 1 | 1 | 0 | 0 | 0 | 0 | 0 |
| Nov. 10 | KENTUCKY | 5 | 0 | 0 | 0 | .000 | 1 | 0 | 2 | 2 | 8 | 0 | 0 | 0 | 0 | 0 |
| Nov. 12 | TENNESSEE | 4 | 0 | 0 | 0 | .000 | 1 | 0 | 0 | 2 | 6 | 0 | 0 | 0 | 0 | 0 |
| Nov. 15 | GEORGIA | 3 | 0 | 0 | 0 | .000 | 0 | 0 | 0 | 1 | 1 | 0 | 0 | 0 | 0 | 0 |
| Nov. 17 | at Alabama | 4 | 0 | 0 | 4 | .000 | 0 | 1 | 0 | 1 | 9 | 0 | 0 | 0 | 0 | 0 |
| Nov. 22 | COLLEGE OF CHARLESTON | 4 | 1 | 0 | 2 | .500 | 0 | 0 | 1 | 2 | 13 | 0 | 0 | 0 | 0 | 0 |
| TOTAL | | 115 | 1 | 8 | 20 | -.350 | 25 | 11 | 15 | 29 | 214 | 0 | 0 | 1 | 0 | 1 |

DINELIA CONCEPCION – 2006

| DATE | OPPONENT | GP | KILL | ERR | ATT | PCT | AST | SA | SE | RE | DIG | BS | BA | BE | TB | BHE |
|----------|---------------------|----|------|-----|-----|--------|-----|----|----|----|-----|----|----|----|----|-----|
| Aug. 25 | vs Boise State | 3 | 0 | 1 | 2 | -.500 | 2 | 0 | 1 | 2 | 17 | 0 | 0 | 0 | 0 | 0 |
| Aug. 25 | at TCU | 5 | 0 | 1 | 1 | -1.000 | 2 | 0 | 0 | 4 | 16 | 0 | 0 | 0 | 0 | 0 |
| Aug. 26 | vs Loyola (Md.) | 2 | 0 | 0 | 0 | .000 | 0 | 0 | 0 | 0 | 7 | 0 | 0 | 0 | 0 | 0 |
| Aug. 26 | vs Texas A&M-C.C. | 3 | 0 | 0 | 0 | .000 | 0 | 0 | 0 | 0 | 4 | 0 | 0 | 0 | 0 | 0 |
| Aug. 31 | at Clemson | 5 | 0 | 0 | 0 | .000 | 0 | 0 | 1 | 0 | 1 | 0 | 0 | 0 | 0 | 0 |
| Sept. 1 | vs Charlotte | 3 | 0 | 0 | 0 | .000 | 0 | 3 | 0 | 2 | 2 | 0 | 0 | 0 | 0 | 0 |
| Sept. 1 | vs Tennessee State | 4 | 0 | 0 | 0 | .000 | 0 | 2 | 1 | 2 | 8 | 0 | 0 | 0 | 0 | 0 |
| Sept. 2 | vs Western Carolina | 3 | 0 | 0 | 0 | .000 | 0 | 0 | 0 | 0 | 2 | 0 | 0 | 0 | 0 | 0 |
| Sept. 8 | ST. JOHN'S | 5 | 0 | 0 | 0 | .000 | 0 | 0 | 1 | 1 | 5 | 0 | 0 | 0 | 0 | 0 |
| Sept. 8 | SOUTHERN CALIFORNIA | 3 | 0 | 0 | 0 | .000 | 1 | 0 | 1 | 1 | 9 | 0 | 0 | 0 | 0 | 0 |
| Sept. 9 | FLORIDA STATE | 5 | 0 | 0 | 0 | .000 | 2 | 1 | 0 | 0 | 6 | 0 | 0 | 0 | 0 | 0 |
| Sept. 15 | AUBURN | 5 | 0 | 0 | 0 | .000 | 1 | 0 | 0 | 1 | 11 | 0 | 0 | 0 | 0 | 0 |
| Sept. 17 | FLORIDA | 4 | 0 | 0 | 0 | .000 | 2 | 0 | 0 | 1 | 8 | 0 | 0 | 0 | 0 | 0 |
| Sept. 22 | at LSU | 3 | 0 | 0 | 0 | .000 | 0 | 0 | 1 | 1 | 8 | 0 | 0 | 0 | 0 | 0 |
| Sept. 24 | at Arkansas | 4 | 0 | 0 | 0 | .000 | 1 | 0 | 0 | 1 | 9 | 0 | 0 | 0 | 0 | 0 |
| Sept. 27 | at Georgia | 3 | 0 | 0 | 0 | .000 | 2 | 0 | 0 | 1 | 6 | 0 | 0 | 0 | 0 | 1 |
| Oct. 1 | ALABAMA | 5 | 0 | 0 | 0 | .000 | 0 | 0 | 0 | 0 | 10 | 0 | 0 | 0 | 0 | 0 |
| Oct. 6 | at Tennessee | 4 | 0 | 0 | 0 | .000 | 1 | 0 | 0 | 1 | 6 | 0 | 0 | 0 | 0 | 0 |
| Oct. 8 | at Kentucky | 3 | 0 | 0 | 0 | .000 | 0 | 0 | 0 | 0 | 2 | 0 | 0 | 0 | 0 | 0 |
| Oct. 13 | MISSISSIPPI | 4 | 0 | 0 | 0 | .000 | 3 | 0 | 0 | 0 | 12 | 0 | 0 | 0 | 0 | 0 |
| Oct. 15 | MISSISSIPPI STATE | 5 | 0 | 0 | 0 | .000 | 1 | 0 | 0 | 3 | 7 | 0 | 0 | 0 | 0 | 0 |
| Oct. 20 | at Florida | 3 | 0 | 0 | 0 | .000 | 1 | 0 | 0 | 1 | 3 | 0 | 0 | 0 | 0 | 0 |
| Oct. 22 | at Auburn | 5 | 0 | 0 | 0 | .000 | 0 | 0 | 0 | 0 | 11 | 0 | 0 | 0 | 0 | 0 |

CAREER MATCH-BY-MATCH STATISTICS



DINELIA CONCEPCION – 2006 (CONTINUED)

| DATE | OPPONENT | GP | KILL | ERR | ATT | PCT | AST | SA | SE | RE | DIG | BS | BA | BE | TB | BHE |
|--------------|-----------------------|------------|----------|----------|----------|--------------|-----------|-----------|----------|-----------|------------|----------|----------|----------|----------|----------|
| Oct. 27 | ARKANSAS | 3 | 0 | 0 | 0 | .000 | 0 | 1 | 0 | 0 | 4 | 0 | 0 | 0 | 0 | 0 |
| Oct. 29 | LSU | 4 | 0 | 0 | 0 | .000 | 2 | 0 | 0 | 1 | 12 | 0 | 0 | 0 | 0 | 0 |
| Nov. 3 | at Mississippi State | 3 | 0 | 0 | 1 | .000 | 1 | 0 | 0 | 0 | 14 | 0 | 0 | 0 | 0 | 0 |
| Nov. 5 | at Mississippi | 3 | 0 | 0 | 0 | .000 | 0 | 0 | 0 | 3 | 7 | 0 | 0 | 0 | 0 | 0 |
| Nov. 10 | KENTUCKY | 5 | 0 | 0 | 0 | .000 | 0 | 1 | 0 | 0 | 17 | 0 | 0 | 0 | 0 | 0 |
| Nov. 12 | TENNESSEE | 4 | 0 | 0 | 0 | .000 | 1 | 0 | 0 | 2 | 11 | 0 | 0 | 0 | 0 | 0 |
| Nov. 15 | GEORGIA | 3 | 0 | 0 | 1 | .000 | 1 | 2 | 1 | 6 | 16 | 0 | 0 | 0 | 0 | 0 |
| Nov. 17 | at Alabama | 4 | 0 | 0 | 0 | .000 | 2 | 0 | 1 | 0 | 28 | 0 | 0 | 0 | 0 | 0 |
| Nov. 22 | COLLEGE OF CHARLESTON | 4 | 0 | 0 | 0 | .000 | 1 | 3 | 0 | 0 | 9 | 0 | 0 | 0 | 0 | 0 |
| TOTAL | | 122 | 0 | 2 | 5 | -.400 | 27 | 13 | 8 | 34 | 288 | 0 | 0 | 0 | 0 | 1 |

DINELIA CONCEPCION – 2005

| DATE | OPPONENT | GP | KILL | ERR | ATT | PCT | AST | SA | SE | RE | DIG | BS | BA | BE | TB | BHE |
|--------------|--------------------------|-----------|----------|----------|----------|-------------|-----------|-----------|----------|-----------|------------|----------|----------|----------|----------|----------|
| Sept. 2 | vs Pittsburgh | 4 | 1 | 0 | 1 | 1.000 | 0 | 4 | 0 | 1 | 8 | 0 | 0 | 0 | 0 | 0 |
| Sept. 2 | at Florida State | 4 | 0 | 1 | 1 | -1.000 | 1 | 0 | 0 | 0 | 6 | 0 | 0 | 0 | 0 | 0 |
| Sept. 3 | vs Mercer | 3 | 0 | 0 | 0 | .000 | 1 | 1 | 1 | 1 | 5 | 0 | 0 | 0 | 0 | 0 |
| Sept. 6 | CHARLOTTE | 3 | 0 | 0 | 0 | .000 | 3 | 0 | 0 | 1 | 3 | 0 | 0 | 0 | 0 | 0 |
| Sept. 9 | vs Coastal Carolina | 3 | 0 | 0 | 0 | .000 | 1 | 0 | 0 | 0 | 7 | 0 | 0 | 0 | 0 | 0 |
| Sept. 10 | vs Purdue | 3 | 0 | 0 | 0 | .000 | 0 | 2 | 0 | 1 | 4 | 0 | 0 | 0 | 0 | 0 |
| Sept. 10 | at North Carolina | 4 | 1 | 0 | 1 | 1.000 | 3 | 1 | 1 | 0 | 18 | 0 | 0 | 0 | 0 | 1 |
| Sept. 13 | at Clemson | 3 | 0 | 0 | 0 | .000 | 1 | 0 | 0 | 2 | 4 | 0 | 0 | 0 | 0 | 0 |
| Sept. 15 | at College of Charleston | 1 | 0 | 0 | 0 | .000 | 0 | 0 | 0 | 0 | 0 | 0 | 0 | 0 | 0 | 0 |
| Sept. 16 | vs Houston | 4 | 0 | 0 | 0 | .000 | 3 | 1 | 2 | 1 | 18 | 0 | 0 | 0 | 0 | 0 |
| Sept. 23 | vs LSU | 5 | 0 | 0 | 0 | .000 | 1 | 0 | 0 | 3 | 17 | 0 | 0 | 0 | 0 | 0 |
| Sept. 25 | at Arkansas | 5 | 0 | 0 | 0 | .000 | 0 | 1 | 1 | 6 | 21 | 0 | 0 | 0 | 0 | 0 |
| Sept. 30 | MISSISSIPPI STATE | 4 | 0 | 1 | 1 | -1.000 | 2 | 1 | 0 | 1 | 14 | 0 | 0 | 0 | 0 | 0 |
| Oct. 2 | MISSISSIPPI | 3 | 0 | 0 | 0 | .000 | 0 | 0 | 0 | 3 | 18 | 0 | 0 | 0 | 0 | 1 |
| Oct. 7 | at Georgia | 5 | 0 | 0 | 0 | .000 | 2 | 0 | 0 | 1 | 17 | 0 | 0 | 0 | 0 | 0 |
| Oct. 9 | at Florida | 3 | 0 | 0 | 0 | .000 | 1 | 0 | 1 | 1 | 8 | 0 | 0 | 0 | 0 | 0 |
| Oct. 14 | at Alabama | 3 | 0 | 0 | 0 | .000 | 1 | 0 | 0 | 3 | 6 | 0 | 0 | 0 | 0 | 0 |
| Oct. 16 | at Auburn | 4 | 0 | 0 | 0 | .000 | 0 | 1 | 0 | 0 | 10 | 0 | 0 | 0 | 0 | 2 |
| Oct. 23 | KENTUCKY | 4 | 0 | 0 | 0 | .000 | 0 | 1 | 0 | 3 | 12 | 0 | 0 | 0 | 0 | 0 |
| Oct. 26 | TENNESSEE | 4 | 0 | 0 | 0 | .000 | 1 | 0 | 1 | 0 | 2 | 0 | 0 | 0 | 0 | 0 |
| Oct. 28 | FLORIDA | 3 | 0 | 0 | 0 | .000 | 1 | 0 | 0 | 1 | 1 | 0 | 0 | 0 | 0 | 0 |
| Oct. 30 | GEORGIA | 5 | 0 | 0 | 0 | .000 | 0 | 2 | 1 | 1 | 9 | 0 | 0 | 0 | 0 | 0 |
| Nov. 4 | at Kentucky | 3 | 0 | 0 | 0 | .000 | 0 | 0 | 0 | 1 | 3 | 0 | 0 | 0 | 0 | 0 |
| Nov. 9 | at Tennessee | 3 | 0 | 0 | 1 | .000 | 0 | 0 | 0 | 1 | 2 | 0 | 0 | 0 | 0 | 0 |
| Nov. 11 | AUBURN | 4 | 0 | 1 | 1 | -1.000 | 0 | 2 | 0 | 0 | 4 | 0 | 0 | 0 | 0 | 0 |
| Nov. 13 | ALABAMA | 5 | 1 | 0 | 1 | 1.000 | 0 | 0 | 1 | 0 | 13 | 0 | 0 | 0 | 0 | 0 |
| Nov. 26 | WINTHROP | 3 | 0 | 0 | 0 | .000 | 1 | 0 | 0 | 0 | 8 | 0 | 0 | 0 | 0 | 0 |
| TOTAL | | 98 | 3 | 3 | 7 | .000 | 23 | 17 | 9 | 32 | 238 | 0 | 0 | 0 | 0 | 4 |

CHRISTINE HAUER – 2006

| DATE | OPPONENT | GP | KILL | ERR | ATT | PCT | AST | SA | SE | RE | DIG | BS | BA | BE | TB | BHE |
|--------------|-----------------|----------|----------|----------|----------|--------------|----------|----------|----------|----------|----------|----------|----------|----------|----------|----------|
| Aug. 26 | vs Loyola (Md.) | 1 | 1 | 0 | 1 | 1.000 | 0 | 0 | 0 | 0 | 0 | 0 | 0 | 0 | 0 | 0 |
| Oct. 1 | ALABAMA | 1 | 0 | 0 | 0 | .000 | 0 | 0 | 0 | 0 | 0 | 0 | 0 | 0 | 0 | 0 |
| TOTAL | | 2 | 1 | 0 | 1 | 1.000 | 0 | 0 | 0 | 0 | 0 | 0 | 0 | 0 | 0 | 0 |

IVANA KUJUNDZIC – 2006

| DATE | OPPONENT | GP | KILL | ERR | ATT | PCT | AST | SA | SE | RE | DIG | BS | BA | BE | TB | BHE |
|---------|---------------------|----|------|-----|-----|--------|-----|----|----|----|-----|----|----|----|----|-----|
| Aug. 25 | at TCU | 5 | 0 | 1 | 1 | -1.000 | 0 | 4 | 2 | 0 | 3 | 0 | 2 | 0 | 2 | 0 |
| Aug. 26 | vs Loyola (Md.) | 2 | 0 | 1 | 1 | -1.000 | 0 | 0 | 0 | 0 | 4 | 1 | 2 | 0 | 3 | 0 |
| Aug. 31 | at Clemson | 4 | 0 | 0 | 0 | .000 | 0 | 1 | 3 | 0 | 2 | 0 | 0 | 0 | 0 | 0 |
| Sept. 1 | vs Charlotte | 2 | 0 | 0 | 0 | .000 | 0 | 1 | 0 | 0 | 0 | 0 | 0 | 0 | 0 | 0 |
| Sept. 1 | vs Tennessee State | 3 | 1 | 1 | 4 | .000 | 0 | 0 | 1 | 0 | 0 | 0 | 3 | 0 | 3 | 0 |
| Sept. 2 | vs Western Carolina | 1 | 1 | 0 | 2 | .500 | 0 | 0 | 0 | 0 | 0 | 0 | 0 | 0 | 0 | 0 |
| Sept. 8 | ST. JOHN'S | 5 | 0 | 0 | 0 | .000 | 0 | 2 | 2 | 0 | 2 | 0 | 0 | 0 | 0 | 0 |
| Sept. 8 | SOUTHERN CALIFORNIA | 1 | 0 | 0 | 0 | .000 | 0 | 0 | 0 | 0 | 0 | 0 | 0 | 0 | 0 | 0 |



CAREER MATCH-BY-MATCH STATISTICS

IVANA KUJUNDZIC – 2006 (CONTINUED)

| DATE | OPPONENT | GP | KILL | ERR | ATT | PCT | AST | SA | SE | RE | DIG | BS | BA | BE | TB | BHE |
|--------------|-----------------------|-----------|-----------|-----------|------------|-------------|----------|-----------|-----------|----------|-----------|----------|-----------|----------|-----------|----------|
| Sept. 9 | FLORIDA STATE | 1 | 0 | 0 | 0 | .000 | 0 | 0 | 1 | 0 | 0 | 0 | 0 | 0 | 0 | 0 |
| Sept. 15 | AUBURN | 4 | 5 | 2 | 11 | .273 | 0 | 1 | 1 | 0 | 2 | 1 | 0 | 0 | 1 | 1 |
| Sept. 17 | FLORIDA | 4 | 3 | 0 | 11 | .273 | 0 | 1 | 0 | 0 | 1 | 0 | 3 | 1 | 3 | 0 |
| Sept. 22 | at LSU | 3 | 6 | 3 | 18 | .167 | 0 | 0 | 1 | 0 | 3 | 0 | 6 | 0 | 6 | 0 |
| Sept. 24 | at Arkansas | 4 | 2 | 2 | 7 | .000 | 1 | 0 | 3 | 0 | 1 | 1 | 3 | 0 | 4 | 1 |
| Sept. 27 | at Georgia | 3 | 8 | 1 | 10 | .700 | 0 | 0 | 1 | 0 | 2 | 0 | 6 | 0 | 6 | 0 |
| Oct. 1 | ALABAMA | 5 | 5 | 4 | 18 | .056 | 3 | 1 | 0 | 0 | 5 | 1 | 2 | 0 | 3 | 0 |
| Oct. 6 | at Tennessee | 4 | 5 | 3 | 10 | .200 | 0 | 0 | 2 | 0 | 3 | 0 | 7 | 0 | 7 | 0 |
| Oct. 8 | at Kentucky | 3 | 6 | 2 | 9 | .444 | 0 | 0 | 1 | 0 | 0 | 0 | 2 | 0 | 2 | 0 |
| Oct. 13 | MISSISSIPPI | 4 | 10 | 2 | 17 | .471 | 0 | 0 | 2 | 0 | 3 | 0 | 6 | 1 | 6 | 0 |
| Oct. 15 | MISSISSIPPI STATE | 5 | 2 | 3 | 9 | -.111 | 0 | 2 | 1 | 0 | 2 | 1 | 3 | 0 | 4 | 0 |
| Oct. 20 | at Florida | 3 | 2 | 1 | 9 | .111 | 0 | 1 | 0 | 0 | 1 | 0 | 1 | 0 | 1 | 0 |
| Oct. 22 | at Auburn | 5 | 8 | 3 | 21 | .238 | 0 | 3 | 0 | 0 | 3 | 0 | 8 | 0 | 8 | 0 |
| Oct. 27 | ARKANSAS | 3 | 2 | 1 | 9 | .111 | 0 | 1 | 2 | 0 | 2 | 0 | 2 | 0 | 2 | 0 |
| Oct. 29 | LSU | 2 | 0 | 2 | 5 | -.400 | 1 | 0 | 0 | 0 | 0 | 0 | 2 | 0 | 2 | 0 |
| Nov. 3 | at Mississippi State | 2 | 0 | 0 | 3 | .000 | 1 | 0 | 0 | 0 | 0 | 0 | 5 | 0 | 5 | 0 |
| Nov. 5 | at Mississippi | 3 | 3 | 0 | 11 | .273 | 0 | 0 | 1 | 0 | 2 | 0 | 3 | 0 | 3 | 0 |
| Nov. 10 | KENTUCKY | 3 | 3 | 5 | 13 | -.154 | 0 | 0 | 1 | 0 | 0 | 0 | 2 | 1 | 2 | 1 |
| Nov. 12 | TENNESSEE | 4 | 2 | 2 | 8 | .000 | 1 | 1 | 1 | 0 | 5 | 0 | 8 | 0 | 8 | 0 |
| Nov. 15 | GEORGIA | 3 | 6 | 2 | 11 | .364 | 0 | 0 | 2 | 0 | 5 | 0 | 1 | 0 | 1 | 0 |
| Nov. 17 | at Alabama | 4 | 4 | 2 | 12 | .167 | 1 | 0 | 0 | 0 | 2 | 0 | 2 | 0 | 2 | 0 |
| Nov. 22 | COLLEGE OF CHARLESTON | 4 | 4 | 0 | 10 | .400 | 1 | 2 | 0 | 0 | 6 | 0 | 1 | 0 | 1 | 0 |
| TOTAL | | 99 | 88 | 43 | 240 | .188 | 9 | 21 | 28 | 0 | 59 | 5 | 80 | 3 | 85 | 3 |

PETRA LORENZI – 2006

| DATE | OPPONENT | GP | KILL | ERR | ATT | PCT | AST | SA | SE | RE | DIG | BS | BA | BE | TB | BHE |
|--------------|-----------------------|-----------|----------|----------|-----------|--------------|------------|----------|----------|----------|-----------|----------|----------|----------|----------|-----------|
| Aug. 26 | vs Loyola (Md.) | 3 | 1 | 0 | 2 | .500 | 19 | 1 | 0 | 0 | 6 | 0 | 1 | 0 | 1 | 1 |
| Sept. 1 | vs Charlotte | 1 | 0 | 1 | 1 | -1.000 | 1 | 0 | 0 | 0 | 0 | 0 | 0 | 0 | 0 | 0 |
| Sept. 1 | vs Tennessee State | 2 | 0 | 0 | 0 | .000 | 6 | 0 | 0 | 0 | 0 | 0 | 1 | 0 | 1 | 1 |
| Sept. 2 | vs Western Carolina | 1 | 0 | 0 | 0 | .000 | 3 | 0 | 0 | 0 | 0 | 0 | 0 | 0 | 0 | 2 |
| Sept. 9 | FLORIDA STATE | 1 | 0 | 0 | 0 | .000 | 0 | 0 | 0 | 0 | 0 | 0 | 0 | 0 | 0 | 0 |
| Sept. 24 | at Arkansas | 4 | 0 | 0 | 1 | .000 | 49 | 1 | 1 | 0 | 6 | 0 | 2 | 2 | 2 | 4 |
| Oct. 1 | ALABAMA | 1 | 0 | 0 | 0 | .000 | 0 | 0 | 0 | 0 | 0 | 0 | 0 | 0 | 0 | 0 |
| Oct. 8 | at Kentucky | 2 | 0 | 0 | 0 | .000 | 0 | 0 | 0 | 0 | 0 | 0 | 0 | 0 | 0 | 1 |
| Oct. 13 | MISSISSIPPI | 2 | 0 | 0 | 0 | .000 | 0 | 0 | 0 | 0 | 6 | 0 | 0 | 0 | 0 | 0 |
| Oct. 15 | MISSISSIPPI STATE | 3 | 0 | 1 | 1 | -1.000 | 0 | 0 | 0 | 0 | 0 | 0 | 0 | 0 | 0 | 0 |
| Oct. 20 | at Florida | 1 | 0 | 0 | 1 | .000 | 0 | 0 | 0 | 0 | 0 | 0 | 0 | 0 | 0 | 0 |
| Oct. 27 | ARKANSAS | 3 | 0 | 0 | 0 | .000 | 23 | 0 | 0 | 0 | 6 | 0 | 0 | 1 | 0 | 1 |
| Oct. 29 | LSU | 4 | 0 | 0 | 0 | .000 | 22 | 1 | 1 | 0 | 13 | 0 | 0 | 0 | 0 | 1 |
| Nov. 3 | at Mississippi State | 3 | 0 | 0 | 0 | .000 | 12 | 0 | 1 | 0 | 10 | 0 | 0 | 0 | 0 | 1 |
| Nov. 5 | at Mississippi | 3 | 0 | 1 | 1 | -1.000 | 16 | 0 | 0 | 0 | 2 | 0 | 0 | 0 | 0 | 0 |
| Nov. 10 | KENTUCKY | 3 | 0 | 1 | 1 | -1.000 | 10 | 0 | 0 | 0 | 1 | 0 | 0 | 0 | 0 | 1 |
| Nov. 12 | TENNESSEE | 4 | 0 | 0 | 0 | .000 | 19 | 0 | 0 | 0 | 5 | 0 | 0 | 0 | 0 | 4 |
| Nov. 15 | GEORGIA | 3 | 0 | 0 | 0 | .000 | 6 | 0 | 0 | 0 | 2 | 0 | 0 | 0 | 0 | 0 |
| Nov. 17 | at Alabama | 3 | 0 | 0 | 0 | .000 | 8 | 1 | 1 | 0 | 3 | 0 | 0 | 0 | 0 | 1 |
| Nov. 22 | COLLEGE OF CHARLESTON | 4 | 1 | 0 | 2 | .500 | 6 | 1 | 0 | 0 | 6 | 0 | 0 | 0 | 0 | 1 |
| TOTAL | | 51 | 2 | 4 | 10 | -.200 | 200 | 5 | 4 | 0 | 66 | 0 | 4 | 3 | 4 | 19 |

PETRA LORENZI – 2005

| DATE | OPPONENT | GP | KILL | ERR | ATT | PCT | AST | SA | SE | RE | DIG | BS | BA | BE | TB | BHE |
|----------|-----------------------|----|------|-----|-----|--------|-----|----|----|----|-----|----|----|----|----|-----|
| Sept. 2 | vs Florida State | 1 | 0 | 0 | 0 | .000 | 0 | 0 | 0 | 0 | 0 | 0 | 0 | 0 | 0 | 1 |
| Sept. 3 | vs Mercer | 2 | 0 | 0 | 1 | .000 | 16 | 0 | 0 | 0 | 2 | 1 | 0 | 1 | 0 | 1 |
| Sept. 9 | vs Coastal Carolina | 2 | 1 | 0 | 3 | .333 | 9 | 0 | 0 | 0 | 4 | 0 | 0 | 0 | 0 | 1 |
| Sept. 10 | vs Purdue | 3 | 0 | 0 | 2 | .000 | 4 | 0 | 0 | 0 | 3 | 0 | 0 | 0 | 0 | 0 |
| Sept. 10 | at North Carolina | 4 | 0 | 2 | 2 | -1.000 | 13 | 0 | 1 | 0 | 8 | 0 | 0 | 0 | 0 | 2 |
| Sept. 13 | at Clemson | 3 | 0 | 0 | 0 | .000 | 5 | 0 | 0 | 0 | 3 | 0 | 0 | 0 | 0 | 1 |
| Sept. 15 | at College Charleston | 2 | 0 | 0 | 0 | .000 | 1 | 0 | 0 | 1 | 2 | 0 | 0 | 0 | 0 | 0 |
| Sept. 16 | vs Houston | 1 | 0 | 0 | 0 | .000 | 0 | 0 | 1 | 0 | 1 | 0 | 0 | 0 | 0 | 0 |

CAREER MATCH-BY-MATCH STATISTICS



PETRA LORENZI – 2005 (CONTINUED)

| DATE | OPPONENT | GP | KILL | ERR | ATT | PCT | AST | SA | SE | RE | DIG | BS | BA | BE | TB | BHE |
|--------------|-------------------|-----------|----------|----------|-----------|--------------|------------|----------|-----------|----------|-----------|----------|-----------|-----------|----------|-----------|
| Sept. 23 | vs LSU | 5 | 0 | 1 | 2 | -.500 | 9 | 0 | 1 | 1 | 1 | 0 | 0 | 0 | 0 | 0 |
| Sept. 25 | at Arkansas | 5 | 0 | 1 | 2 | -.500 | 15 | 0 | 0 | 0 | 4 | 0 | 1 | 1 | 0 | 0 |
| Sept. 30 | MISSISSIPPI STATE | 4 | 0 | 0 | 0 | .000 | 12 | 0 | 0 | 0 | 5 | 0 | 0 | 0 | 0 | 2 |
| Oct. 2 | MISSISSIPPI | 3 | 0 | 0 | 0 | .000 | 10 | 0 | 0 | 0 | 1 | 0 | 0 | 0 | 0 | 0 |
| Oct. 7 | at Georgia | 5 | 0 | 0 | 0 | .000 | 13 | 0 | 0 | 0 | 8 | 0 | 0 | 0 | 0 | 0 |
| Oct. 9 | at Florida | 3 | 0 | 0 | 0 | .000 | 12 | 0 | 0 | 0 | 3 | 0 | 0 | 0 | 0 | 1 |
| Oct. 14 | at Alabama | 3 | 1 | 1 | 2 | .000 | 21 | 0 | 0 | 0 | 4 | 2 | 0 | 2 | 0 | 2 |
| Oct. 16 | at Auburn | 4 | 0 | 1 | 4 | -.250 | 38 | 1 | 2 | 0 | 3 | 0 | 2 | 2 | 0 | 9 |
| Oct. 23 | KENTUCKY | 4 | 2 | 0 | 5 | .400 | 29 | 1 | 1 | 0 | 6 | 0 | 0 | 0 | 0 | 2 |
| Oct. 26 | TENNESSEE | 4 | 2 | 0 | 5 | .400 | 41 | 1 | 0 | 0 | 9 | 0 | 2 | 2 | 0 | 3 |
| Oct. 28 | FLORIDA | 3 | 0 | 0 | 1 | .000 | 28 | 1 | 0 | 0 | 12 | 0 | 1 | 1 | 1 | 4 |
| Oct. 30 | GEORGIA | 5 | 1 | 1 | 7 | .000 | 52 | 1 | 1 | 0 | 10 | 0 | 3 | 3 | 0 | 2 |
| Nov. 4 | at Kentucky | 3 | 0 | 0 | 5 | .000 | 36 | 0 | 2 | 0 | 2 | 1 | 1 | 2 | 0 | 3 |
| Nov. 9 | at Tennessee | 3 | 0 | 0 | 0 | .000 | 14 | 0 | 3 | 1 | 4 | 0 | 0 | 0 | 0 | 2 |
| Nov. 11 | AUBURN | 3 | 0 | 1 | 1 | -1.000 | 5 | 0 | 3 | 0 | 2 | 0 | 0 | 0 | 0 | 1 |
| Nov. 13 | ALABAMA | 2 | 0 | 0 | 0 | .000 | 4 | 0 | 0 | 0 | 2 | 0 | 0 | 0 | 0 | 1 |
| TOTAL | | 77 | 7 | 8 | 42 | -.024 | 387 | 5 | 15 | 3 | 99 | 4 | 10 | 14 | 1 | 38 |

MEREDITH MOORHEAD – 2006

| DATE | OPPONENT | GP | KILL | ERR | ATT | PCT | AST | SA | SE | RE | DIG | BS | BA | BE | TB | BHE |
|--------------|-----------------------|-----------|------------|-----------|------------|-------------|-----------|-----------|-----------|-----------|-----------|----------|-----------|----------|-----------|----------|
| Aug. 25 | vs Boise State | 1 | 0 | 0 | 1 | .000 | 0 | 1 | 1 | 0 | 0 | 0 | 0 | 0 | 0 | 0 |
| Aug. 25 | at TCU | 2 | 2 | 1 | 10 | .100 | 0 | 0 | 1 | 2 | 5 | 0 | 0 | 0 | 0 | 0 |
| Aug. 26 | vs Loyola (Md.) | 2 | 5 | 5 | 14 | .000 | 3 | 2 | 1 | 0 | 3 | 0 | 0 | 0 | 0 | 0 |
| Aug. 31 | at Clemson | 4 | 6 | 2 | 15 | .267 | 1 | 2 | 1 | 1 | 1 | 0 | 0 | 0 | 0 | 0 |
| Sept. 1 | vs Charlotte | 1 | 0 | 1 | 3 | -.333 | 0 | 0 | 0 | 0 | 0 | 0 | 0 | 0 | 0 | 0 |
| Sept. 1 | vs Tennessee State | 3 | 8 | 7 | 24 | .042 | 0 | 0 | 2 | 1 | 5 | 0 | 1 | 0 | 1 | 0 |
| Sept. 2 | vs Western Carolina | 1 | 1 | 0 | 2 | .500 | 0 | 0 | 0 | 0 | 1 | 0 | 0 | 0 | 0 | 0 |
| Sept. 8 | ST. JOHN'S | 3 | 4 | 4 | 19 | .000 | 0 | 0 | 0 | 1 | 3 | 0 | 2 | 1 | 2 | 0 |
| Sept. 8 | SOUTHERN CALIFORNIA | 2 | 2 | 1 | 8 | .125 | 1 | 0 | 0 | 0 | 0 | 0 | 0 | 0 | 0 | 0 |
| Sept. 9 | FLORIDA STATE | 5 | 11 | 6 | 27 | .185 | 1 | 2 | 5 | 0 | 7 | 0 | 0 | 0 | 0 | 0 |
| Sept. 15 | AUBURN | 4 | 1 | 2 | 9 | -.111 | 0 | 0 | 1 | 1 | 2 | 0 | 0 | 1 | 0 | 0 |
| Sept. 17 | FLORIDA | 1 | 1 | 0 | 3 | .333 | 0 | 0 | 0 | 0 | 0 | 0 | 0 | 0 | 0 | 0 |
| Sept. 22 | at LSU | 1 | 0 | 0 | 1 | .000 | 0 | 0 | 0 | 0 | 0 | 0 | 0 | 0 | 0 | 0 |
| Sept. 24 | at Arkansas | 4 | 3 | 4 | 19 | -.053 | 0 | 0 | 0 | 0 | 2 | 0 | 5 | 0 | 5 | 0 |
| Oct. 1 | ALABAMA | 3 | 7 | 2 | 16 | .312 | 0 | 0 | 0 | 0 | 1 | 0 | 0 | 0 | 0 | 0 |
| Oct. 6 | at Tennessee | 4 | 4 | 7 | 21 | -.143 | 0 | 0 | 0 | 0 | 1 | 0 | 0 | 1 | 0 | 0 |
| Oct. 13 | MISSISSIPPI | 4 | 8 | 3 | 24 | .208 | 1 | 0 | 0 | 1 | 1 | 0 | 0 | 0 | 0 | 0 |
| Oct. 15 | MISSISSIPPI STATE | 5 | 7 | 3 | 28 | .143 | 0 | 0 | 0 | 1 | 3 | 0 | 0 | 0 | 0 | 0 |
| Oct. 20 | at Florida | 2 | 0 | 1 | 3 | -.333 | 0 | 0 | 0 | 0 | 0 | 0 | 0 | 0 | 0 | 0 |
| Oct. 27 | ARKANSAS | 3 | 3 | 2 | 8 | .125 | 0 | 0 | 0 | 0 | 1 | 0 | 1 | 0 | 1 | 0 |
| Oct. 29 | LSU | 4 | 12 | 5 | 27 | .259 | 1 | 0 | 0 | 0 | 2 | 0 | 3 | 0 | 3 | 0 |
| Nov. 3 | at Mississippi State | 3 | 6 | 7 | 22 | -.045 | 2 | 0 | 0 | 0 | 0 | 0 | 2 | 0 | 2 | 0 |
| Nov. 5 | at Mississippi | 3 | 5 | 3 | 24 | .083 | 1 | 0 | 2 | 1 | 7 | 0 | 5 | 0 | 5 | 1 |
| Nov. 10 | KENTUCKY | 5 | 15 | 2 | 25 | .520 | 1 | 1 | 3 | 3 | 4 | 0 | 4 | 0 | 4 | 1 |
| Nov. 12 | TENNESSEE | 4 | 12 | 5 | 30 | .233 | 2 | 2 | 3 | 0 | 6 | 0 | 3 | 0 | 3 | 0 |
| Nov. 15 | GEORGIA | 3 | 8 | 4 | 19 | .211 | 0 | 1 | 1 | 0 | 10 | 0 | 1 | 0 | 1 | 0 |
| Nov. 17 | at Alabama | 4 | 15 | 7 | 39 | .205 | 0 | 1 | 2 | 3 | 12 | 0 | 1 | 1 | 1 | 0 |
| Nov. 22 | COLLEGE OF CHARLESTON | 4 | 9 | 5 | 28 | .143 | 3 | 0 | 3 | 5 | 3 | 0 | 3 | 0 | 3 | 0 |
| TOTAL | | 85 | 155 | 89 | 469 | .141 | 17 | 12 | 26 | 20 | 80 | 0 | 31 | 4 | 31 | 2 |

BELITA SALTERS – 2006

| DATE | OPPONENT | GP | KILL | ERR | ATT | PCT | AST | SA | SE | RE | DIG | BS | BA | BE | TB | BHE |
|---------|-------------------|----|------|-----|-----|------|-----|----|----|----|-----|----|----|----|----|-----|
| Aug. 25 | vs Boise State | 3 | 6 | 3 | 13 | .231 | 0 | 0 | 0 | 0 | 0 | 0 | 4 | 0 | 4 | 1 |
| Aug. 25 | at TCU | 5 | 5 | 2 | 12 | .250 | 0 | 0 | 0 | 0 | 1 | 0 | 5 | 0 | 5 | 0 |
| Aug. 26 | vs Loyola (Md.) | 3 | 7 | 0 | 9 | .778 | 0 | 0 | 0 | 0 | 5 | 0 | 3 | 0 | 3 | 0 |
| Aug. 26 | vs Texas A&M-C.C. | 3 | 6 | 1 | 10 | .500 | 3 | 0 | 0 | 0 | 2 | 1 | 3 | 0 | 4 | 0 |
| Aug. 31 | at Clemson | 5 | 8 | 3 | 18 | .278 | 2 | 0 | 0 | 0 | 2 | 1 | 2 | 2 | 3 | 0 |
| Sept. 1 | vs Charlotte | 3 | 6 | 3 | 14 | .214 | 1 | 1 | 2 | 0 | 0 | 2 | 4 | 0 | 6 | 0 |



CAREER MATCH-BY-MATCH STATISTICS

BELITA SALTERS – 2006 (CONTINUED)

| DATE | OPPONENT | GP | KILL | ERR | ATT | PCT | AST | SA | SE | RE | DIG | BS | BA | BE | TB | BHE |
|--------------|-----------------------|------------|------------|-----------|------------|-------------|-----------|-----------|-----------|----------|-----------|-----------|-----------|-----------|------------|----------|
| Sept. 1 | vs Tennessee State | 3 | 6 | 1 | 10 | .500 | 1 | 1 | 1 | 0 | 3 | 1 | 0 | 2 | 1 | 0 |
| Sept. 2 | vs Western Carolina | 3 | 6 | 1 | 9 | .556 | 1 | 3 | 0 | 0 | 3 | 0 | 2 | 0 | 2 | 1 |
| Sept. 8 | ST. JOHN'S | 5 | 10 | 2 | 15 | .533 | 2 | 1 | 2 | 1 | 2 | 1 | 4 | 2 | 5 | 0 |
| Sept. 8 | SOUTHERN CALIFORNIA | 3 | 3 | 3 | 10 | .000 | 0 | 0 | 0 | 0 | 1 | 0 | 5 | 0 | 5 | 0 |
| Sept. 9 | FLORIDA STATE | 5 | 8 | 3 | 20 | .250 | 0 | 0 | 1 | 0 | 1 | 1 | 4 | 0 | 5 | 0 |
| Sept. 15 | AUBURN | 5 | 11 | 4 | 24 | .292 | 1 | 3 | 2 | 0 | 5 | 0 | 6 | 0 | 6 | 1 |
| Sept. 17 | FLORIDA | 4 | 9 | 2 | 16 | .438 | 0 | 2 | 1 | 0 | 1 | 0 | 5 | 0 | 5 | 0 |
| Sept. 22 | at LSU | 3 | 11 | 5 | 21 | .286 | 0 | 0 | 1 | 0 | 3 | 0 | 4 | 1 | 4 | 0 |
| Sept. 24 | at Arkansas | 4 | 5 | 8 | 21 | -.143 | 0 | 0 | 1 | 0 | 2 | 1 | 4 | 0 | 5 | 0 |
| Sept. 27 | at Georgia | 3 | 5 | 2 | 16 | .188 | 0 | 0 | 0 | 0 | 0 | 0 | 1 | 1 | 1 | 0 |
| Oct. 1 | ALABAMA | 2 | 4 | 1 | 7 | .429 | 0 | 0 | 0 | 0 | 0 | 0 | 1 | 0 | 1 | 0 |
| Oct. 6 | at Tennessee | 4 | 7 | 3 | 17 | .235 | 0 | 0 | 0 | 0 | 1 | 2 | 2 | 1 | 4 | 0 |
| Oct. 8 | at Kentucky | 3 | 8 | 4 | 20 | .200 | 0 | 0 | 0 | 0 | 0 | 0 | 3 | 0 | 3 | 0 |
| Oct. 13 | MISSISSIPPI | 4 | 8 | 6 | 19 | .105 | 0 | 0 | 0 | 0 | 0 | 0 | 2 | 1 | 2 | 0 |
| Oct. 15 | MISSISSIPPI STATE | 5 | 6 | 7 | 19 | -.053 | 1 | 0 | 0 | 0 | 0 | 0 | 3 | 0 | 3 | 0 |
| Oct. 20 | at Florida | 3 | 6 | 4 | 14 | .143 | 0 | 0 | 3 | 0 | 0 | 1 | 5 | 1 | 6 | 1 |
| Oct. 22 | at Auburn | 5 | 8 | 5 | 22 | .136 | 0 | 0 | 0 | 0 | 1 | 0 | 2 | 0 | 2 | 0 |
| Oct. 27 | ARKANSAS | 2 | 3 | 2 | 9 | .111 | 0 | 0 | 1 | 0 | 1 | 0 | 1 | 0 | 1 | 0 |
| Oct. 29 | LSU | 4 | 6 | 5 | 18 | .056 | 0 | 0 | 1 | 0 | 1 | 1 | 4 | 0 | 5 | 0 |
| Nov. 3 | at Mississippi State | 3 | 7 | 0 | 8 | .875 | 1 | 0 | 0 | 0 | 0 | 1 | 3 | 1 | 4 | 1 |
| Nov. 5 | at Mississippi | 3 | 9 | 6 | 21 | .143 | 0 | 0 | 0 | 0 | 0 | 0 | 4 | 1 | 4 | 0 |
| Nov. 10 | KENTUCKY | 5 | 6 | 5 | 19 | .053 | 1 | 0 | 0 | 0 | 1 | 1 | 2 | 2 | 3 | 1 |
| Nov. 12 | TENNESSEE | 3 | 2 | 2 | 5 | .000 | 0 | 0 | 0 | 0 | 0 | 0 | 0 | 0 | 0 | 1 |
| Nov. 15 | GEORGIA | 2 | 1 | 2 | 3 | -.333 | 0 | 0 | 0 | 0 | 0 | 0 | 0 | 1 | 0 | 0 |
| Nov. 17 | at Alabama | 4 | 8 | 1 | 15 | .467 | 0 | 0 | 0 | 0 | 0 | 0 | 2 | 0 | 2 | 0 |
| Nov. 22 | COLLEGE OF CHARLESTON | 2 | 1 | 1 | 2 | .000 | 1 | 0 | 0 | 0 | 0 | 0 | 0 | 0 | 0 | 0 |
| TOTAL | | 114 | 202 | 97 | 456 | .230 | 15 | 11 | 16 | 1 | 36 | 14 | 90 | 16 | 104 | 7 |

BELITA SALTERS – 2005

| DATE | OPPONENT | GP | KILL | ERR | ATT | PCT | AST | SA | SE | RE | DIG | BS | BA | BE | TB | BHE |
|--------------|--------------------------|-----------|-----------|-----------|------------|-------------|----------|----------|----------|----------|-----------|----------|-----------|-----------|----------|----------|
| Sept. 3 | vs Mercer | 1 | 0 | 1 | 1 | -1.000 | 0 | 0 | 0 | 0 | 0 | 0 | 2 | 2 | 0 | 0 |
| Sept. 10 | at North Carolina | 4 | 4 | 2 | 12 | .167 | 0 | 0 | 0 | 0 | 1 | 1 | 10 | 11 | 2 | 0 |
| Sept. 13 | at Clemson | 3 | 0 | 2 | 3 | -.667 | 0 | 0 | 0 | 0 | 2 | 0 | 2 | 2 | 0 | 0 |
| Sept. 15 | at College of Charleston | 1 | 0 | 0 | 1 | .000 | 0 | 0 | 0 | 0 | 0 | 1 | 2 | 3 | 0 | 0 |
| Sept. 23 | vs LSU | 1 | 0 | 0 | 0 | .000 | 0 | 0 | 0 | 0 | 0 | 0 | 0 | 0 | 1 | 0 |
| Oct. 9 | at Florida | 1 | 1 | 1 | 5 | .000 | 0 | 0 | 0 | 0 | 0 | 0 | 0 | 0 | 0 | 1 |
| Oct. 28 | FLORIDA | 3 | 5 | 6 | 17 | -.059 | 0 | 0 | 0 | 0 | 1 | 0 | 5 | 5 | 0 | 0 |
| Oct. 30 | GEORGIA | 5 | 8 | 6 | 22 | .091 | 0 | 0 | 0 | 0 | 3 | 0 | 3 | 3 | 0 | 0 |
| Nov. 4 | at Kentucky | 3 | 4 | 3 | 11 | .091 | 0 | 0 | 0 | 0 | 2 | 0 | 2 | 2 | 0 | 1 |
| Nov. 9 | at Tennessee | 3 | 2 | 3 | 7 | -.143 | 0 | 0 | 0 | 0 | 0 | 0 | 6 | 6 | 1 | 1 |
| Nov. 11 | AUBURN | 4 | 6 | 3 | 12 | .250 | 1 | 0 | 0 | 1 | 1 | 1 | 9 | 10 | 1 | 0 |
| Nov. 13 | ALABAMA | 5 | 8 | 3 | 21 | .238 | 0 | 0 | 0 | 0 | 0 | 0 | 1 | 1 | 1 | 0 |
| Nov. 26 | WINTHROP | 3 | 8 | 3 | 14 | .357 | 1 | 0 | 0 | 0 | 2 | 0 | 6 | 6 | 0 | 0 |
| TOTAL | | 37 | 46 | 33 | 126 | .103 | 2 | 0 | 0 | 1 | 12 | 3 | 48 | 51 | 6 | 3 |