



SOUTH CAROLINA

2009 WOMEN'S SOCCER

Contact: Miquel Jacobs • **Office:** (803) 777-1516 • **Cell:** (803) 530-5727 • **Fax:** (803) 777-2967
Email: jacobsm2@mailbox.sc.edu • Roost Building B, 1322 Heyward Street, Columbia, SC 29208
www.GamecocksOnline.com

2009 Schedule/Results

DAY	DATE	OPPONENT	TIME/RESULT
Fri.	Aug. 21	Mexican National Team	W, 2-0
Thur.	Aug. 27	College of Charleston	W, 2-0
Sun.	Aug. 30	Western Carolina	W, 2-0
Fri.	Sept. 4	Louisville (1)	W, 3-0
Sun.	Sept. 6	Cincinnati (1)	W, 4-0
Fri.	Sept. 11	Clemson (2)	W, 5-0
Sun.	Sept. 13	UNC Wilmington	W, 2-0
Fri.	Sept. 18	#17 UCF	W, 1-0
Sun.	Sept. 20	South Alabama	W, 6-1
Fri.	Sept. 25	Vanderbilt*	7 p.m.
Sun.	Sept. 27	Kentucky*	1:30 p.m.
Fri.	Oct. 2	Mississippi*	8 p.m.
Sun.	Oct. 4	Mississippi State*	2 p.m.
Fri.	Oct. 9	Auburn*	7 p.m.
Sun.	Oct. 11	Alabama*	3:30 p.m.
Fri.	Oct. 16	Georgia*	7 p.m.
Sun.	Oct. 18	Tennessee*	2 p.m.
Thur.	Oct. 22	Arkansas*	7 p.m.
Sun.	Oct. 25	LSU* (ESPNU)	3 p.m.
Fri.	Oct. 30	Florida*	6 p.m.
Wed.	Nov. 4	(3) SEC Championships	TBA
Fri.	Nov. 6	(3) SEC Championships	TBA
Sun.	Nov. 8	(3) SEC Championships	TBA

All Times Eastern
 Home matches in **BOLD** *SEC Match
 1-Louisville Tournament, Louisville, Ky.
 2-Carolina Cup, Clemson, S.C.
 3-Orange Beach, Ala.

Game 9-10

#11 Gamecocks Open SEC Slate With Vandy, UK



#11 South Carolina
(8-0-0)

Stone Stadium
Columbia, S.C.

Sept. 25, 2009 • 7 p.m.



Vanderbilt
(6-1-1)

Stone Stadium
Columbia, S.C.

Sept. 27, 2009 • 1:30 p.m.



Kentucky
(3-2-3)

No. 11 South Carolina opens its SEC schedule with a televised home match against Vanderbilt Friday night at 7 p.m. The Gamecocks (8-0-0) and Commodores (6-1-1) will both attempt to jump to the top of the SEC in the match that will be broadcast live by Fox Sports South.

Andy Demetra will be the play-by-play broadcaster for the match, and Katie Witham will provide color commentary.

The Gamecocks will then return to the pitch Sunday afternoon at 1:30 p.m. compete against the Kentucky Wildcats (3-2-3). The game is different from the normal Sunday afternoon starting time of 2 p.m.

Vanderbilt holds a 13-1-2 series advantage against South Carolina with the lone Gamecock win coming in the 1999 season. The Commodores defeated the Gamecocks with seven seconds remaining in the second overtime in the last meeting at Stone Stadium (2007).

Kentucky holds a 10-4-0 series advantage but has dropped the past two matchups with the Gamecocks by 2-0 scores. New coach John Lipsitz has faced South Carolina numerous times as the head coach of Charlotte - posting a 3-2 record over Coach Shelley Smith's Gamecocks in that rivalry.

PROMOTIONS FOR SUNDAY'S MATCH

Free Drawstring Backpacks for the first 250 fans

South Carolina Probable Starters

#	Name	Pos.	Class	GS-GP	G	A	P	Shots	Notes
21	Brittany Rhoades	D	Jr.	8-7	0	0	0	3	2007 Freshman All-American returns at left back
7	Blakely Mattern	D	Sr.	8-8	4	1	9	8	Another strong season from the All-America candidate
20	Ellen Fahey	D	So.	8-8	0	4	4	0	Tied USC GW assist season record with third of the year vs. UCF
3	Samantha Diaz-Matosas	D	Sr.	8-8	2	3	7	7	Athletic player can play up top or back
16	Lindsay Small	M	Sr.	8-8	2	1	5	12	Solid midfielder is a mainstay as a defensive mid
5	Kim Miller	M	Sr.	8-8	2	6	10	11	Eighth in the NCAA with 0.75 assists per game (6 on year)
12	Shannon Bigbie	M	Sr.	6-4	1	0	2	2	Returned to starting lineup after missing two games to injury
15	Kortney Rhoades	M	So.	8-7	0	2	2	7	Transfer playing strong as attacking mid
4	Kayla Grimsley	F	So.	8-8	7	1	15	13	Has scored (goal and/or assist) in every game this season
27	Brooke Jacobs	F	Jr.	8-8	1	2	4	15	Career SOG% leader looking to convert goals this season

No.	Name	Pos.	Yr.	Min.	GA	GAA.	Svs.	W-L	SO	Notes
29	Mollie Patton	GK	R-Jr.	689:32	0	0.00	28	8-0-0	8	NCAA leader with seven solo shutouts and 0.00 GAA



2009 NUMERICAL ROSTER

No.	Name	Pos.	Ht.	Cl/Exp.	Hometown (High School)
0	Alex Holland	GK	5-7	Fr./HS	Cary, Ill. (Cary-Grove)
1	Roya Mojarab	GK	5-4	Soph./1L	Tacoma, Wash. (Curtis)
2	Megan Fligg	D/F	5-6	Fr./HS	Gainesville, Ga. (Chestatee)
3	Samantha Diaz-Matosas	D	5-7	Sr./3L	Lilburn, Ga. (Brookwood)
4	Kayla Grimsley	M/F	5-4	Soph./1L	Lakeland, Fla. (George W. Jenkins)
5	Kim Miller	M	5-2	Sr./3L	Farmingdale, N.Y. (Famingdale)
7	Blakely Mattern	D	5-9	Sr./3L	Simpsonville, S.C. (JL Mann)
8	Christine Watts	M	5-6	Fr./HS	Duluth, Ga. (Peachtree Ridge)
9	Maria Petroni	F	5-10	Soph./1L	Flowery Branch, Ga. (Buford)
10	Natalie Aaron	F	5-5	Soph./1L	Brentwood, Tenn. (Battle Ground Academy)
11	Idana DeCecco	D	5-6	Soph./1L	Sherwood Park, Alberta (Archbishop Jordan)
12	Shannon Bigbie	F/M	5-6	Sr./3L	Lexington, S.C. (Lexington)
13	Jocelyn Spurrier	D	5-8	R-Fr./HS	Lawrenceville, Ga. (Brookwood)
14	Lolly Holland	M	5-4	Soph./1L	Suwanee, Ga. (South Forsyth)
15	Kortney Rhoades	M	5-4	Soph.TR	Wilmington, Del. (Padua // St. Joseph's)
16	Lindsay Small	M/D	5-7	Sr./3L	Suffield, Conn. (Suffield)
17	Maggie Blackwell	D	5-6	R-Soph./SQ	Marietta, S.C. (Travelers Rest)
18	Ali Glemser	D	5-3	R-Fr./HS	Collierville, Tenn. (Collierville)
19	Kira Campbell	M	5-8	Soph./1L	Lexington, S.C. (Lexington)
20	Ellen Fahey	D	5-7	Soph./1L	Fort Wright, Ky. (Notre Dame Academy)
21	Brittany Rhoades	D	5-3	Jr./2L	Wilmington, Del. (Padua)
22	Dani Henry	F/D	5-4	R-Fr./HS	Avondole, Pa. (Padua)
23	Kacie Brewer	F/D	5-5	Sr./3L	Merritt Island, Fla. (Merritt Island)
25	Maddy Kill	M	5-7	Jr./TR	Marietta, Ga. (Marist School // Seton Hall)
26	Rae Wilson	F	5-5	Fr./HS	Greenville, S.C. (JL Mann)
27	Brooke Jacobs	F	5-3	Jr./2L	Chambersburg, Pa. (Chambersburg Area)
28	Brittany DeWitt	D	5-6	Fr./HS	Greensboro, N.C. (N.C. School of Science & Math)
29	Mollie Patton	GK	5-7	R-Jr./1L	Milford, Ohio (Milford)
32	Aly Shattls	M	5-1	Sr./3L	Huntington, W.Va. (Huntington)
35	Darien Vercillo	GK	5-6	Fr./HS	Yorba Linda, Calif. (Mater Dei)

2009 ALPHABETICAL ROSTER

No.	Name	Pos.	Ht.	Cl/Exp.	Hometown (High School)
10	Natalie Aaron	F	5-5	Soph./1L	Brentwood, Tenn. (Battle Ground Academy)
12	Shannon Bigbie	F/M	5-6	Sr./3L	Lexington, S.C. (Lexington)
17	Maggie Blackwell	D	5-6	R-Soph./SQ	Marietta, S.C. (Travelers Rest)
23	Kacie Brewer	F/D	5-5	Sr./3L	Merritt Island, Fla. (Merritt Island)
19	Kira Campbell	M	5-8	Soph./1L	Lexington, S.C. (Lexington)
11	Idana DeCecco	D	5-6	Soph./1L	Sherwood Park, Alberta (Archbishop Jordan)
28	Brittany DeWitt	D	5-6	Fr./HS	Greensboro, N.C. (N.C. School of Science & Math)
3	Samantha Diaz-Matosas	D	5-7	Sr./3L	Lilburn, Ga. (Brookwood)
20	Ellen Fahey	D	5-7	Soph./1L	Fort Wright, Ky. (Notre Dame Academy)
2	Megan Fligg	D/F	5-6	Fr./HS	Gainesville, Ga. (Chestatee)
18	Ali Glemser	D	5-3	R-Fr./HS	Collierville, Tenn. (Collierville)
4	Kayla Grimsley	M/F	5-4	Soph./1L	Lakeland, Fla. (George W. Jenkins)
22	Dani Henry	F/D	5-4	R-Fr./HS	Avondole, Pa. (Padua)
0	Alex Holland	GK	5-7	Fr./HS	Cary, Ill. (Cary-Grove)
14	Lolly Holland	M	5-4	Soph./1L	Suwanee, Ga. (South Forsyth)
27	Brooke Jacobs	F	5-3	Jr./2L	Chambersburg, Pa. (Chambersburg Area)
25	Maddy Kill	M	5-7	Jr./TR	Marietta, Ga. (Marist School // Seton Hall)
7	Blakely Mattern	D	5-9	Sr./3L	Simpsonville, S.C. (JL Mann)
5	Kim Miller	M	5-2	Sr./3L	Farmingdale, N.Y. (Famingdale)
1	Roya Mojarab	GK	5-4	Soph./1L	Tacoma, Wash. (Curtis)
29	Mollie Patton	GK	5-7	R-Jr./1L	Milford, Ohio (Milford)
9	Maria Petroni	F	5-10	Soph./1L	Flowery Branch, Ga. (Buford)
21	Brittany Rhoades	D	5-3	Jr./2L	Wilmington, Del. (Padua)
15	Kortney Rhoades	M	5-4	Soph.TR	Wilmington, Del. (Padua // St. Joseph's)
32	Aly Shattls	M	5-1	Sr./3L	Huntington, W.Va. (Huntington)
16	Lindsay Small	M/D	5-7	Sr./3L	Suffield, Conn. (Suffield)
13	Jocelyn Spurrier	D	5-8	R-Fr./HS	Lawrenceville, Ga. (Brookwood)
35	Darien Vercillo	GK	5-6	Fr./HS	Yorba Linda, Calif. (Mater Dei)
8	Christine Watts	M	5-6	Fr./HS	Duluth, Ga. (Peachtree Ridge)
26	Rae Wilson	F	5-5	Fr./HS	Greenville, S.C. (JL Mann)

PRONUNCIATIONS

Kira Campbell -- KEER-uh
Idana DeCecco -- id-DAN-uh de-CHECK-oh
 Sam **Diaz-Matosas** -- DIAZ mah-TOE-sas
 Ellen **Fahey** -- FAYE-he
Roya Mojarab -- ROY-ah mo-JAR-uhb
 Darien **Vercillo** -- ver-SILL-oh

**SOUTH CAROLINA
 2009 SEC RANKINGS
 (as of 9/23/09)**

Category	Pl.	No.
Goals	2nd	25
Goals Per Game	2nd	3.12
Goals Allowed	1st	1
GAA	1st	0.12
Assists	1st	24
Assists Per Game	1st	3.00
Points	T-1st	74
Points Per Game	T-1st	9.25
Shots	8th	122
Shots Per Game	8th	15.25
Shot %	1st	.205
Shot on Goal %	1st	.574
Saves	7th	30
Saves Per Game	7th	3.75
Shutouts	1st	7
Shots Allowed	3rd	58
SOG Allowed	5th	31
Points Allowed	1st	3
Fouls	12th	61
Corners	8th	42
Offsides	T-5th	22
Yellow Cards	T-8th	2

INDIVIDUAL

Name	Category	Pl.	No.
Diaz-Matosas	Assists	T-8th	3
Fahey	Assists	T-4th	4
Grimsley	Goals	T-1st	7
	Points	T-1st	15
	Points/gm	T-1st	1.88
	GWG	T-4th	2
Mattern	Goals	T-7th	4
	GWG	T-4th	2
Miller	Assists	2nd	6
	Points	T-8th	10
	Points/game	T-10th	1.25
Patton	GAA	1st	0.00
	Save %	1st	1.000
	Shutouts	1st	7
	Saves	7th	28



SEC STANDINGS

EASTERN DIVISION			WESTERN DIVISION		
Team	W-L	Pts	Team	W-L	Pts
South Carolina	0-0	-	Mississippi State	0-0	-
Georgia	0-0	-	Arkansas	0-0	-
Vanderbilt	0-0	-	Ole Miss	0-0	-
Florida	0-0	-	LSU	0-0	-
Tennessee	0-0	-	Alabama	0-0	-
Kentucky	0-0	-	Auburn	0-0	-

Games through September 24

THIS WEEK IN THE SEC

Friday, September 25

Kentucky at Florida	7 p.m.
Vanderbilt at South Carolina	7 p.m.
Alabama at Ole Miss	8 p.m.
Tennessee at Arkansas	8 p.m.
Auburn at Mississippi State	8 p.m.
Georgia at LSU	8 p.m.

Sunday, September 27

Kentucky at South Carolina	1:30 p.m.
Alabama at Mississippi State	2 p.m.
Georgia at Arkansas	2 p.m.
Vanderbilt at Florida	2 p.m.
Tennessee at LSU	2 p.m.
Auburn at Ole Miss	3 p.m.

All Times Eastern

SEC PRESEASON POLL

EASTERN DIVISION		WESTERN DIVISION	
Rank	Team	Rank	Team
11	Florida	8	LSU
1	Georgia	4	Auburn
43	Tennessee	43	Ole Miss
40	South Carolina	39	Alabama
25	Vanderbilt	25	Arkansas
19	Kentucky	18	Mississippi State

Overall Champion: Florida (11), Auburn (1)

ON THE HORIZON

The Gamecocks hit the road after the current four-game homestand with a trip to the Magnolia State next weekend. The Gamecocks will face Ole Miss Friday at 7 p.m. before playing Mississippi State at 2 p.m.

SCOUTING VANDERBILT

Vanderbilt comes into the match with a 6-1-1 record with the lone loss coming against Texas Tech. The Commodores have been led by juniors Molly Kinsella (4g, 7a, 15p) and Nicole Lukens (5g, 1a, 11p). Lukens was named to the Top Drawer Soccer Team of the Week this week and leads the team with five goals after missing the 2007 season to injury. Junior Rachel Bachtel holds a 0.55 goals against average with two solo shutouts this year.

Vanderbilt holds a 13-1-2 series advantage with South Carolina, including a 2-1 win last season. Carolina's sole win in the series was a 1-0 win on Sept. 10, 1999. The last time the two teams played at Stone Stadium, Vanderbilt defeated South Carolina 1-0 when Kinsella scored a goal with seven seconds remaining in the second overtime.

SCOUTING KENTUCKY

Kentucky enters the match with a 3-2-3 record under new coach John Lipsitz. The Wildcats have had a difficult time scoring - their 3-0 win against Tennessee Tech Sunday snapped a five-match scoreless streak. However, the team has also limited opponents from scoring as Kentucky holds a 6-4 scoring advantage through eight games. In addition to Tennessee Tech, the team holds wins against Cincinnati (2-1) and Louisville (1-0), teams South Carolina played and defeated 4-0 and 3-0. The Wildcats are led by sophomore Jenna Goblirsch's two goals and five points, while junior keeper Sydney Hiance sports a 0.46 goals against average with five shutouts. Senior forward Katie Fahey is the older sister of South Carolina sophomore defender Ellen Fahey.

Kentucky holds a 10-4-0 series advantage, but South Carolina won the last two matches between the teams by identical 2-0 scores.

IN THE POLLS

With eight consecutive shutout victories to open the season and an 25-1 scoring differential, South Carolina has jumped in the national polls and peaks at No. 11 in the Soccer America poll. The Gamecocks also come in at No. 12 in the NSCAA coaches poll and No. 13 by Soccer Times. The rankings are the highest South Carolina has been ranked since the week of Sept. 17, 2007 when the team came in at No. 7 by Soccer America and No. 10 by the NSCAA.

HOME AT THE STONE

South Carolina has been nearly unstoppable at Stone Stadium the past three seasons, posting a 27-2-5 record at home since 2006. The streak included a 15-game unbeaten streak from Aug. 31, 2006-Oct. 5, 2007 and a 13-game unbeaten streak at "The Graveyard" from Oct. 19, 2007-Oct. 23, 2008. The lone blemishes on the record are a double-overtime loss to Vanderbilt (Oct. 7, 2007) and a loss to #7 Florida (Oct. 30, 2008). The season opening win against College of Charleston was **Coach Shelley Smith's** 50th win at Stone Stadium.

SOUTH CAROLINA VS. RANKED TEAMS

Date	Opponent	Result	Date	Opponent	Result
9-18-96	#9 Clemson	W, 3-2	9-15-04	#7 Clemson	W, 2-0
10-4-97	at #9 Clemson	L, 0-5	10-3-04	#19 Tennessee	L, 1-3
10-26-97	at #9 Florida	L, 2-5	10-29-04	#18 Florida	L, 1-2 (2OT)
9-11-98	at #17 Georgia	W, 2-0	10-2-05	at #20 Tennessee	L, 1-2
10-7-98	#13 Clemson	L, 1-3	10-7-05	#18 Vanderbilt	L, 0-2
11-5-98	vs. #3 Florida	L, 0-6	10-29-05	at #16 Florida	L, 0-3
10-8-99	at #9 Clemson	L, 0-4	8-25-06	vs. #13 Illinois	L, 0-1
10-29-99	at #3 Florida	L, 0-5	9-24-06	at #13 Auburn	W, 1-0
9-8-00	at #1 UNC	L, 1-9	9-29-06	#16 Tennessee	T, 0-0 (2OT)
9-12-00	vs. #17 Duke	L, 1-5	10-27-06	#13 Florida	T, 1-1 (2OT)
10-8-00	at #14 Kentucky	L, 1-5	9-1-07	at #1 North Carolina	W, 1-0
10-29-00	#16 Florida	L, 0-3	9-22-07	at #20 Clemson	L, 0-1
9-30-01	at #20 Florida	L, 0-1	9-27-07	at #10 Tennessee	L, 2-3 (OT)
10-2-01	at #9 Clemson	L, 0-3	10-21-07	#25 Auburn	W, 2-0
10-5-01	#16 Kentucky	L, 0-1	10-25-07	at #20 LSU	T, 1-1 (2OT)
10-21-01	at #25 Tennessee	L, 1-3	11-2-07	at #22 Florida	L, 0-2
9-11-02	#18 Clemson	L, 0-1	11-7-07	vs. #15 Tennessee	W, 2-0
10-20-02	#13 Tennessee	T, 1-1 (2OT)	11-9-07	vs. #13 Georgia	L, 0-2
8-29-03	at #20 Clemson	L, 0-1 (OT)	9-14-08	vs. #7 Florida State	T, 3-3 (2OT)
9-12-03	at #5 Texas A&M	L, 1-2 (OT)	10-23-08	#13 LSU	T, 0-0 (2OT)
10-3-03	#14 Auburn	T, 0-0 (2OT)	10-30-08	#7 Florida	L, 0-1
11-1-03	at #10 Florida	L, 0-2	9-18-09	#17 UCF	W, 1-0
11-7-03	vs. #16 Tennessee	L, 0-1			
9-12-04	at #4 Virginia	L, 2-5			

Overall: 8-31-7 vs. Top 10: 3-12-1
Home: 4-8-5 Road: 3-18-1 Neutral: 1-5-1



CAROLINA'S RECORD WHEN ...

Overall	8-0-0
Home	4-0-0
Away	2-0-0
Neutral	2-0-0
Leading At The Half	7-0-0
Tied At The Half	1-0-0
Trailing At The Half	0-0-0
Scores In The First Half	7-0-0
Overtime Games	0-0-0
On Television	0-0-0
In Tournaments	4-0-0
Against 2008 NCAA Participants	2-0-0
Vs. Top 25	1-0-0
Vs. South Region Teams	4-0-0
Longest Unbeaten Streak	W8
Active Streak	W8
Against Opponents	
USC Scores First	8-0-0
Opponent Scores First	0-0-0
Scores 1 Goal	1-0-0
Scores 2 Goals	3-0-0
Scores 3+ Goals	4-0-0
Opponent Scores 1 Goal	1-0-0
Opponent Scores 2 Goals	0-0-0
Opponent Scores 3+ Goals	0-0-0
Is Shutout	0-0-0
Shut Out Opponent	7-0-0
Takes More Shots	7-0-0
Opponent Takes More Shots	1-0-0
Time	
Day Games	4-0-0
Night Games	4-0-0
Mondays	0-0-0
Wednesdays	0-0-0
Thursdays	1-0-0
Fridays	3-0-0
Saturdays	0-0-0
Sundays	4-0-0
August	2-0-0
September	6-0-0
October	0-0-0
November	0-0-0
After A Win	7-0-0
After A Loss	0-0-0
After A Tie	0-0-0
Wearing White	6-0-0
Wearing Garnet	0-0-0
Wearing Black	2-0-0

AT THE TOP OF THE NCAA LISTS

Noted as one of the top defensive teams in the country under Shelley Smith, South Carolina has continued that excellence this season and added a little offensive flair as well. The Gamecocks are ranked No. 2 in the NCAA in defense (0.125 goals against average) and No. 15 in the NCAA in scoring offense (3.13 goals/game). With the production, South Carolina is also at the top of the SEC lists. The team leads the conference in goals allowed, goals against average, shutouts, assists, points, shot percentage and shot on goal percentage.

SHUTOUT DEFENSE

Headed into last Sunday's game against South Alabama, South Carolina was one of three teams in the nation to start the season with seven consecutive shutouts. The Gamecocks allowed a goal with four minutes to play against the Jaguars, but goalkeeper **Mollie Patton**'s streak remains alive as she was not in the final 30 minutes of the match.

FIRST TIME OPPONENTS

South Carolina faced four opponents for the first time in 2009 and went 4-0 in those games. The Gamecocks defeated Louisville (3-0), Cincinnati (4-0), UCF (1-0) and South Alabama (6-1). Last season, Carolina went 0-1-2 against first time opponents, drawing UNC Wilmington and #7 Florida State before dropping a tight game to Western Carolina.

MILLER TIME

Senior **Kim Miller** has been one of the most consistent performers for South Carolina the past four years, and the New York native has stretched that consistency to another part of her game in her final season. Miller is currently tied for 8th in the NCAA with six assists so far this season. In a two-game stretch, Miller recorded assists on four consecutive goals for the Gamecocks.

PATTON EARNS NATIONAL HONORS

Redshirt junior goalkeeper **Mollie Patton** earned Soccer America National Team of the Week honors after her stellar play at the Cardinal Classic. She earned her first national award after shutting out Louisville and Cincinnati to extend her season-opening shutout streak to 360 minutes. Patton currently is the NCAA leader with seven solo shutouts and a 0.00 goals against average. She recently set the SEC record for consecutive shutouts, passing the previous record of six held by Kentucky's Carrie Kuhnell (1995) and Auburn's Megan Rivera (2003).

GRIMSLEY'S RECORD PLAY

Sophomore **Kayla Grimsley** has continued the stellar play that she exhibited in her freshman season last year. The flashy player set a new South Carolina record with her current eight-match scoring streak, and her goal against South Alabama ties her program record four-match goal scoring streak. She currently is tied for the SEC lead in goals (7) and points (8). She can crack the SEC Top 5 in consecutive games with a point if she scores (goal and/or assist) in both games this weekend.

ELLEN FAHEY'S BEEN HOT LATELY

Sophomore defender **Ellen Fahey** started every game at centerback last season as a freshman, continuing the legacy of all-conference caliber freshman defenders after **Blakely Mattern** (2006) and **Brittany Rhoades** (2007). Strong and assertive in the back, Fahey added a new dimension to her play thus far after recording her first four career points, three on game-winning assists. Her three game-winning assists tie the South Carolina single season record.

SPREADING THE WEALTH

Goals have been spread around the entire Gamecock team so far with a different player hitting the game-winning goal in six of Carolina's eight games. Thirteen different players have scored a goal this season, and only five players have scored multiple goals this season: **Kayla Grimsley**, **Kim Miller**, **Blakely Mattern**, **Samantha Diaz-Matosas** and **Lindsay Small**.

APPROACHING THE RECORD

Senior defender **Blakely Mattern** has started every game of her career, and with 75 career starts is currently third all-time at South Carolina. She is on pace to surpass Ashley Kirk's record of 81 starts in the Oct. 16 away game at Georgia. She, along with **Shannon Bigbie**, **Samantha Diaz-Matosas** and **Kim Miller**, could surpass the games played record of 83 on the Oct. 22 home finale against Arkansas.

CAMPBELL, WILSON DOUBTFUL FOR SEC OPENER

Sophomore **Kira Campbell** and freshman **Rae Wilson**, both South Carolina natives, are doubtful for the SEC opening weekend due to injury. Campbell, who has started all six games she has played, tweaked her shoulder in the 2-0 win against UNC Wilmington and has not played since leaving the game in the second half. Wilson injured her leg the same weekend and should return to the pitch soon.



HOME MATCHES UNDER SMITH

DATE	OPPONENT	RESULT
9-4-01	Davidson	W, 4-0
9-17-01	Furman	W, 3-0
9-19-01	SC State	W, 12-0
10-5-01	Kentucky	L, 0-1
10-7-01	Vanderbilt	L, 0-1
10-26-01	Ole Miss	W, 1-0
10-28-01	Mississippi State	L, 1-2 (OT)
11-2-01	UNC Greensboro	W, 2-0
8-30-02	Birmingham Southern	W, 3-0
9-11-02	Clemson	L, 0-1
9-14-02	College of Charleston	W, 3-1
9-29-02	Florida	W, 1-0 (OT)
10-11-02	Arkansas	L, 1-2 (OT)
10-13-02	LSU	W, 2-0
10-18-02	Georgia	L, 1-2 (OT)
10-20-02	Tennessee	T, 1-1 (OT)
10-29-02	Wofford	W, 1-0
9-2-03	Furman	L, 0-1
9-5-03	Charleston Southern	W, 2-1
9-7-03	Darmouth	W, 3-1
9-17-03	Davidson	W, 4-1
9-21-03	NC State	W, 1-0
10-3-03	Auburn	T, 0-0 (OT)
10-5-03	Alabama	W, 2-0
10-17-03	Vanderbilt	L, 0-1
10-19-03	Kentucky	W, 2-1
8-27-04	Georgia State	W, 1-0
9-3-04	Houston	W, 4-1
9-5-04	Iowa State	W, 1-0
9-15-04	Clemson	W, 2-0
9-19-04	Charlotte	W, 2-1 (2 OT)
10-1-04	Georgia	T, 1-1 (OT)
10-3-04	Tennessee	L, 1-3
10-15-04	Ole Miss	L, 0-1
10-17-04	Mississippi State	L, 2-3 (OT)
10-24-04	LSU	W, 2-1
10-29-04	Florida	L, 1-2 (2 OT)
8-26-05	Mercer	W, 7-0
8-29-05	Furman	W, 2-1
9-18-05	Miami (Fla.)	W, 2-1
9-23-05	Auburn	L, 0-1
9-25-05	Alabama	W, 2-0
10-7-05	Vanderbilt	L, 0-2
10-9-05	Kentucky	L, 1-2 (2 OT)
10-21-05	Arkansas	L, 1-2
8-31-06	Francis Marion	W, 2-1
9-3-06	James Madison	W, 3-1
9-5-06	The Citadel	W, 4-0
9-15-06	Clemson	W, 1-0
9-17-06	Jacksonville State	W, 6-0
9-29-06	Tennessee	T, 0-0 (2 OT)
10-1-06	Georgia	W, 2-1
10-13-06	Mississippi State	W, 1-0
10-15-06	Ole Miss	T, 0-0 (2 OT)
10-20-06	LSU	W, 2-1 (2 OT)
10-27-06	Florida	T, 1-1 (2 OT)
9-3-07	East Tennessee State	W, 5-2
9-12-07	Winthrop	W, 5-0
9-23-07	Marshall	W, 4-0
10-5-07	Kentucky	W, 2-0
10-7-07	Vanderbilt	L, 0-1 (2OT)
10-19-07	Alabama	W, 2-0
10-21-07	Auburn	W, 1-0
10-28-07	Arkansas	W, 1-0
8-28-08	East Carolina	W, 1-0
8-31-08	Boston University	W, 1-0
9-5-08	Clemson	W, 1-0
9-7-08	Furman	W, 2-1
9-19-08	East Tennessee State	W, 4-0
9-26-08	Tennessee	W, 2-1
9-28-08	Georgia	T, 1-1
10-10-08	Mississippi State	W, 2-1
10-12-08	Ole Miss	W, 3-2
10-23-08	LSU	T, 0-0
10-30-08	Florida	L, 0-1
8-27-09	College of Charleston	W, 2-0
8-30-09	Western Carolina	W, 2-0
9-18-09	UCF	W, 1-0
9-20-09	South Alabama	W, 6-1

TOTAL RECORD: 53-18-8
LONGEST UNBEATEN STREAK: 15
SHUTOUTS RECORDED 38

MATTERN'S CAREER WEEKEND

Senior **Blakely Mattern** had a career weekend at the Carolina's Cup when she scored three goals in two games for six points to earn the Carolina's Cup MVP honor. The senior defender also led the Gamecocks to their sixth shutout - tied for the NCAA lead - in the 5-0 win at Clemson and 2-0 win against UNC Wilmington. For her efforts, she was named the SEC Defensive Player of the Week for the second time in three weeks and also earned a spot on the Soccer America and Top Drawer Soccer National Teams of the Week.

DIAZ-MATOSAS DELIVERS

Senior defender **Samantha Diaz-Matosas** has started off strong for South Carolina with a four-point weekend at the Cardinal Classic. Diaz-Matosas earned an assist in the final seconds of the match against Louisville before scoring her first goal of the season and getting the game-winning assist in the 4-0 win against Cincinnati. A versatile player, Diaz-Matosas can play anywhere on the field, making her a top threat for the Gamecocks in her fourth year.

SENIOR CLASS BECOMES FIRST TO WIN AT CLEMSON

South Carolina defeated rival Clemson 5-0 last Sunday for the program's first victory at Historic Riggs Field. In a rivalry that has been played annually since 1995 in a home-and-home series, the Gamecocks not only never won at Riggs Field in seven tries but never scored a goal there until the offensive outburst in a 5-0 win. Senior **Shannon Bigbie** hit the game winner in her first start of the year, classmate **Blakely Mattern** scored two goals and senior **Kim Miller** notched two assists in the victory.

MATTERN EARNS MULTIPLE WEEKLY HONORS

Senior defender **Blakely Mattern** picked up conference and national honors after South Carolina's shutout wins in the season opening weekend. Mattern was named the SEC Defensive Player of the Week and was selected to the Soccer America National Team of the Week after leading a defense that held two opponents to a combined two shots in shutout victories.

RETURNING CATEGORY LEADERS

Carolina returns 10 starters from last season's NCAA Tournament team and only lost one senior from the squad that went 11-7-4. South Carolina will enter 2009 as one of the most experienced teams in the nation, and depth will also be available after Coach Shelley Smith signed seven freshmen and landed two transfers for the 2009 season.

Statistical Category Breakdown

Category	2008 Leader (Total)	% Returning	Top Returner
Points	Grimsley (22)	93%	Grimsley (22)
Goals	Grimsley (8)	93%	Grimsley (8)
Game-Winning Goals	Grimsley, Miller, Small (2)	91%	Grimsley, Miller, Small (2)
Assists	Grimsley (6)	46%	Grimsley (6)
Shots	Jacobs (38)	94%	Jacobs (38)
Shots on Goal	Jacobs (26)	91%	Jacobs (26)
Saves	Patton (58)	100%	Patton (58)
Goals Against Average	Patton (0.96)	100%	Patton (0.96)

LOWE'S SENIOR CLASS AWARD CANDIDATE BLAKELY MATTERN

Senior defender **Blakely Mattern** has been selected as one of 30 candidates for the 2009 Lowe's Senior CLASS Award for women's soccer, presented annually in eight NCAA Division I Sports to a senior student-athlete who excels both on and off the field. Candidates are chosen based on their dedication and achievement in four areas: Classroom, Character, Community and Competition.

An acronym for Celebrating Loyalty and Achievement for Staying in School, the Lowe's Senior CLASS Award focuses on the total student-athlete and encourages students to use their platform in athletics to make a positive impact as leaders in their communities.

From the list of 30 candidates, 10 finalists will be selected midway through the regular season and placed on the official ballot for a nationwide vote. Fan balloting will be coupled with votes from coaches and media to determine the recipient of the award. Winners will be announced during the 2009 NCAA Division I Women's College Cup in College Station, Texas.

MEXICAN EXHIBITION

South Carolina ended its preseason with a 2-0 shutout win of the Mexican National Team. Since that match, the Mexican team went 4-0 in its collegiate tour and outscored opponents 14-2 with wins at Kennesaw State (5-0), TCU (4-1), then-#12 Southern California (2-0) and Cal State Fullerton (3-1).



OVERTIME MATCHES

DATE	OPPONENT	RESULT
9-15-95	at VCU	W, 1-0
9-29-95	vs. Marquette (Clemson, S.C.)	L, 1-2
10-13-95	Georgia	T, 1-1
10-16-95	Evansville	W, 1-0
10-19-95	College of Charleston	T, 1-1
1995 OVERTIME RECORD: 2-1-2		
9-29-96	at Georgia	L, 1-2
10-27-96	at Auburn	T, 1-1
10-30-96	at Furman	T, 1-1
1996 OVERTIME RECORD: 0-1-2		
9-14-97	Kentucky	L, 3-4
10-10-97	at Georgia Southern	W, 3-2
1997 OVERTIME RECORD: 1-1		
9-4-98	Wake Forest	T, 1-1
9-25-98	at Kentucky	L, 0-1
10-13-98	at Furman	W, 3-2
1998 OVERTIME RECORD: 1-1-1		
9-12-99	Kentucky	L, 1-2
10-12-99	Wofford	W, 2-1
11-4-99	vs. Vanderbilt (SEC Tourn.)	L, 1-2
1999 OVERTIME RECORD: 1-2		
2000 OVERTIME RECORD: 0-0		
9-1-01	at College of Charleston	T, 0-0
9-9-01	vs. UNLV (San Diego, Calif.)	T, 1-1
10-14-01	at LSU	T, 4-4
10-28-01	Mississippi State	L, 1-2
2001 OVERTIME RECORD: 0-1-3		
9-29-02	Florida	W, 1-0
10-11-02	Arkansas	L, 1-2
10-18-02	Georgia	L, 1-2
10-20-02	Tennessee	T, 1-1
10-25-02	at Auburn	T, 1-1
2002 OVERTIME RECORD: 1-2-2		
8-29-03	at Clemson	L, 0-1
9-12-03	at Texas A&M	L, 1-2
9-14-03	at Houston	T, 1-1
10-3-03	Auburn	T, 0-0
10-24-03	at Ole Miss	T, 0-0
2003 OVERTIME RECORD: 0-2-3		
8-31-04	at James Madison	L, 2-3
9-19-04	Charlotte	W, 2-1
10-1-04	Georgia	T, 1-1
10-8-04	at Vanderbilt	T, 1-1
10-17-04	Mississippi State	L, 2-3
10-29-04	Florida	L, 1-2
2004 OVERTIME RECORD: 1-3-2		
10-10-05	Kentucky	L, 1-2
2005 OVERTIME RECORD: 0-1		
9-29-06	Tennessee	T, 0-0
10-16-06	Ole Miss	T, 0-0
10-20-06	LSU	W, 2-1
10-22-06	at Arkansas	T, 1-1
10-27-06	Florida	T, 1-1
11-1-06	vs. Vanderbilt (SEC Tourn.)	T, 1-1
2006 OVERTIME RECORD: 1-0-5		
9-27-07	at Tennessee	L, 2-3
9-30-07	at Georgia	L, 1-2
10-7-07	Vanderbilt	L, 0-1
10-12-07	at Mississippi State	T, 0-0
10-25-07	at LSU	T, 1-1
11-14-07	vs. Duke (NCAA First Rnd.)	T, 1-1
2007 OVERTIME RECORD: 0-3-3		
8-23-08	at UNC Wilmington	T, 0-0
9-7-08	Furman	W, 2-1
9-14-08	vs. Florida State (Auburn, Ala.)	T, 3-3
9-28-08	Georgia	T, 1-1
10-23-08	LSU	T, 0-0
11-14-08	vs. William & Mary (NCAA)	L, 2-3
TOTAL RECORD: 9-19-27		
UNDER SHELLEY SMITH: 4-13-22		

GAMECOCKS ON TV

South Carolina will have two televised games in the 2008 season. The SEC opener against Vanderbilt will be broadcast on Fox Sports South Friday, Sept. 25 at 7 p.m. in Columbia. The Gamecocks will also appear on ESPNU with their October 25 match at LSU slated for 3 p.m. The broadcast will mark the third consecutive season that the Gamecocks will play on national television.

ALL-AMERICAN DEFENSE

The South Carolina defense has been consistently one of the top in the SEC and in the nation, and all signs point to this season being another strong one for the Garnet and Black. The Gamecocks return two former Freshman All-Americans in senior **Blakely Mattern** and junior **Brittany Rhoades**.

Mattern (Simpsonville, S.C.) has started every game of her career at center back, earning Freshman All-America honors in 2006 and becoming Carolina's first All-American after picking up honors in 2007. Mattern also picked up 2007 SEC Defensive Player of the Year honors to become the first sophomore in conference history to earn the honor, and earned a trip to the US U-20 National Team camp in 2008. Rhoades (Wilmington, Del.) set a USC freshman record with 23 games played and 22 games started in her first year at left back, becoming the second Freshman All-American in as many years for the defense.

MATTERN, GRIMSLEY NAMED PRESEASON ALL-SEC

South Carolina senior defender **Blakely Mattern** and sophomore forward **Kayla Grimsley** have been selected to the third annual women's soccer Coaches Preseason All-SEC team.

Mattern (Simpsonville, S.C.) has been named to the list in all three years of its existence. She is a three-time postseason All-SEC selection and in 2007 became the first sophomore to earn SEC Defensive Player of the Year honors. A 2007 Soccer Buzz All-American and 2008 CoSIDA/ESPN The Magazine First Team Academic All-American, Mattern has started every game of her career and is a three-time All-Southeast Region selection. In 2008, she was the leader of a defense that finished the season second in the SEC in shutouts (8) and ranked in the top two in every major defensive category, including goals allowed, points allowed, shots allowed and shots on goal allowed. The Gamecocks led the league in shots allowed (8.45/game) and shots on goal allowed (3.68/game).

Grimsley (Lakeland, Fla.) earns her first preseason honor after a strong freshman campaign that culminated in her earning second team All-SEC honors, SEC All-Freshman team honors and Soccer Buzz All-Southeast Region honors. She led the team in her rookie season with eight goals and six assists for 22 points, making her only the second freshman and seventh player overall to score 20 points in a season at South Carolina. She tied the program record with a six-match scoring streak that began with the start of conference play, and she became the only freshman in Gamecock history to score a goal in four consecutive matches. She twice earned SEC weekly honors and brought home four national team of the week honors last season.

COACHES TAB GAMECOCKS FOURTH IN SEC EAST

The South Carolina women's soccer team was picked to finish fourth in the Eastern division of the 2009 SEC preseason poll, the conference office announced Wednesday. The Gamecocks are coming off an 11-7-4 record in 2008 with a third place finish in the East with a 5-4-2 record.

South Carolina returns 10 starters and lost only one senior from the 2008 squad that advanced to the NCAA Tournament for the second consecutive year. Senior defender Blakely Mattern and sophomore forward Kayla Grimsley were named to the 11-player Preseason All-SEC team last week after both earned All-SEC honors last season.

Florida was selected as the favorite to claim the 2009 women's soccer title in the poll voted on by the league's 12 head coaches. In the East, Georgia and Tennessee were selected behind Florida with Vanderbilt picked to finish fifth and Kentucky picked sixth. LSU was favored to win the Western Division with eight first-place votes followed by Auburn with four first place votes. Ole Miss, Alabama, Arkansas and Mississippi State round out selections three thru six in the division, respectively.



GOAL SUMMARY

Player (#)	Opp. (Time)	Asst. (#)
Miller (1)	Col. of Charleston (13:42)	-
Grimsley (1)	Col. of Charleston (29:54)	Small (1)
Grimsley (2)	Western Carolina (22:38)	Fahey (1)
Miller (2)	Western Carolina (26:49)	D-Matosas (1)
Small (1)	Louisville (27:09)	Miller (1)
Watts (1)	Louisville (43:52)	-
Grimsley (3)	Louisville (89:51)	D-Matosas (2)
Mattern (1)	Cincinnati (26:54)	Fahey(2), D-Matosas (3)
Diaz-Matosas (1)	Cincinnati (59:32)	Grimsley (1)
Fligg (1)	Cincinnati (79:09)	Miller (2)
Petroni (1)	Cincinnati (81:13)	Miller (3)
Bigbie (1)	Clemson (3:22)	Miller (4), Jacobs (1)
Mattern (2)	Clemson (35:33)	Miller (5)
Jacobs (2)	Clemson (36:51)	Watts (1)
Grimsley (4)	Clemson (65:44)	-
Mattern (3)	Clemson (71:35)	-
Mattern (4)	UNC-W (55:17)	K. Rhoades (1)
Grimsley (5)	UNC-W (63:52)	Fahey (3), Brewer (1)
Grimsley (6)	UCF (27:18)	Fahey (4)
Small (2)	South Alabama (3:30)	Miller (6)
Diaz-Matosas (2)	South Alabama (19:03)	-
Aaron (1)	South Alabama (27:34)	Jacobs (2)
Grimsley (7)	South Alabama (55:53)	K. Rhoades (2)
Holland (1)	South Alabama (59:32)	Mattern (1)
Brewer (1)	South Alabama (73:39)	Petroni (1), Aaron (1)

GOAL BREAKDOWN

At home	11
On the road	8
Neutral Site.....	6
vs. SEC.....	0
vs. Non-Conference.....	25
First Half	14
Second Half	11

ALL-TIME USC SCORING LIST

Rnk.	Name	G	A	Pts.
1.	Jennie Ondo	50	15	115
2.	Morgan McIntyre	29	5	63
3.	Angela Austin	19	16	54
4.	Mindy Sanders	14	24	52
5.	Debbie Smith	19	11	49
6.	Melinda Carter	15	16	46
T7.	Kayla Grimsley	15	7	37
T7.	Darcell Mollon	15	7	37
9.	Ashley Williams	17	2	36
10.	Lydia Bienias	12	10	34
11.	Blakely Mattern	13	6	32
T12.	Lexi Tourtelotte	14	3	31
T12.	Ashley Kirk	9	13	31
T14.	Becca Epstein	10	10	30
T14.	Erin Sullivan	11	8	30

Current Players

Kayla Grimsley	15	7	37
Blakely Mattern	13	6	32
Kim Miller	7	12	26
Sam Diaz-Matosas	7	11	25

ALL-TIME USC GOALTENDING LIST

Rnk.	Name	GAA	SHO
T1.	Laura Armstrong	0.79	15
T1.	Elise Matthews	1.24	15
3.	Mollie Patton	0.72	14
T4.	Lindsay Thorstenson	1.33	9
T4.	Carrie Warner	1.58	9
6.	Carolyn Ortega	1.14	6.5
7.	Emily Crain	1.78	6
8.	Amy Toms	1.71	5
9.	Amanda Sandling	2.04	4.5
10.	Jessica Freas	3.01	1

Current Players

Mollie Patton	0.72	14
---------------	------	----

2009 HONOR ROLL

Kayla Grimsley - Soccer America Team of the Week (Wk5), CollegeSoccer360 Primetime Performer of the Week (Wk5), Preseason All-SEC, Cardinal Classic All-Tournament Team, Carolina's Cup All-Tournament Team

Blakely Mattern - SEC Defensive Player of the Week (Wk2, Wk4), Soccer America Team of the Week (Wk2, Wk4), Top Drawer Soccer Team of the Week (Wk4), Cardinal Classic All-Tournament Team, Carolina's Cup Tournament MVP, Preseason All-SEC, Lowe's Senior CLASS Award candidate

Kim Miller - Cardinal Classic All-Tournament Team, Carolina's Cup All-Tournament Team

Mollie Patton - Soccer America Team of the Week (Wk3), Cardinal Classic All-Tournament Team

Lindsay Small - Carolina's Cup All-Tournament Team

SEC WEEKLY HONORS

Week	Defensive POW	Offensive POW	Freshman of the Week
1	Kailey Anders, D (Arkansas)	Carrie Patterson, F (Georgia)	Amy Howard, GK (Auburn)
2	Blakely Mattern, D (South Carolina)	Taylor Cunningham, M (Ole Miss)	Rebekah Perry, M (Georgia)
3	Molly Baird, GK (Tennessee)	Molly Kinsella, F (Vanderbilt)	Monica Alvarado, M (Mississippi State)
4	Blakely Mattern, D (South Carolina)	Mick Imgram, M (Tennessee)	Brooke Thigpen, M (Florida)
5	Justine Bernier, GK (Alabama)	Kat Walsh, F (Mississippi State)	Amy Howard, GK (Auburn)
6			
7			
8			
9			
10			



OPPONENT NOTES

VANDERBILT (6-1-1)

QUICK FACTS

Location Nashville, Tenn.
Nickname Commodores
Colors Gold & Black
Conference SEC
Head Coach Ronnie Coveleskie
Record at School (Years) 68-58-25 (8 yrs)
Career Record (Years) 83-79-29 (10 yrs)
Assistant Coaches Cristin Czubik, Eric Vaughter

2008 Record 9-8-2
Conference Finish 3-7-1 (10th)
Postseason None
Series Record Vanderbilt leads, 13-1-2
Last Meeting Vandy, 2-1 (10/5/08)
Letterwinners Returning/Lost 22/4
Starters Returning/Lost 9/2

Soccer SID Thomas Samuel
SID E-mail thomas.samuel@vanderbilt.edu
SID Phone (615) 343-0020
Website www.VUCommodores.com

PROBABLE STARTERS

No.	Name	Pos	Yr.	GP	G	A	Pts.	Shots
7	Nicole Lukens	F	R-Jr.	8	5	1	11	17
8	Margaux Andrews	M	Fr.	8	1	1	3	9
9	Megan Forester	M	Sr.	8	1	4	6	10
10	Elizabeth Lillie	M	So.	8	0	1	1	1
11	Katherine Dean	D	Jr.	7	0	0	0	1
13	Amanda Essay	D	Fr.	8	1	0	2	5
14	Megan Kinsella	M	Jr.	8	2	0	4	12
17	Chelsea Stewart	M	Fr.	8	3	1	7	16
20	Molly Kinsella	F	Jr.	8	4	7	15	29
23	CJ Rhoades	M	Fr.	8	0	1	1	9

No.	Name	Pos.	Yr.	Min.	GA	GAA.	Svs.	W-L	SO
1	Rachel Bachel	GK	Jr.	655:30	4	0.55	25	6-0-1	2

NSCAA/adidas

Week 5 (9/22)

No.	School	Rec.
1.	North Carolina	6-0-0
2.	Stanford	7-0-0
3.	UCLA	4-1-1
4.	Portland	7-0-0
5.	Florida State	6-1-0
6.	Boston College	6-0-0
7.	Wake Forest	7-1-0
8.	California	5-1-0
9.	Santa Clara	5-2-0
10.	Florida	5-2-0
11.	Virginia	4-1-2
12.	South Carolina	6-0-0
13.	Texas A&M	3-3-0
14.	Notre Dame	3-3-0
15.	Purdue	5-2-0
16.	Georgia	6-0-1
17.	Rutgers	4-1-1
18.	Maryland	7-0-0
19.	Indiana	6-1-0
20.	Kansas	7-1-1
21.	Ohio State	5-1-1
22.	UCF	5-1-1
23.	St. John's	7-1-0
24.	San Diego	5-2-1
25.	Connecticut	6-2-0

NSCAA South Region

Week 5 (9/22)

No.	School	Rec.
1.	Florida	6-3-0
2.	South Carolina	8-0-0
3.	Georgia	7-0-1
4.	Denver	5-3-1
5.	Auburn	3-2-3
6.	LSU	4-2-2
7.	Tennessee	4-3-1
8.	Vanderbilt	1-1-1
9.	Ole Miss	6-2-0
T10.	MTSU	6-1-1
T10.	Alabama	4-3-0

Soccer America

Week 5 (9/22)

No.	School	Rec.
1.	Stanford	7-0-0
2.	North Carolina	6-0-0
3.	Boston College	6-0-0
4.	Portland	7-0-0
5.	UCLA	4-1-1
6.	Florida State	6-1-0
7.	California	5-1-0
8.	Georgia	6-0-1
9.	Maryland	7-0-0
10.	Santa Clara	5-2-0
11.	South Carolina	6-0-0
12.	Notre Dame	3-3-0
13.	Michigan State	6-0-2
14.	Virginia	4-1-2
15.	St. John's	7-1-0
16.	Connecticut	6-2-0
17.	Wake Forest	7-1-0
18.	Kansas	7-1-1
19.	Indiana	6-1-0
20.	Rutgers	4-1-1
21.	Texas A&M	3-3-0
22.	Oregon State	7-1-0
23.	Oregon	6-1-1
24.	Florida	5-2-0
T25.	UCF	5-1-1
T25.	Purdue	5-2-0
T25.	Ohio State	6-1-1

Soccer Times

Week 5 (9/22)

No.	School	Rec.
1.	Stanford	7-0-0
2.	North Carolina	6-0-0
3.	UCLA	4-1-1
4.	Portland	7-0-0
5.	Florida State	6-1-0
6.	Boston College	6-0-0
7.	California	5-1-0
8.	Virginia	4-1-2
9.	Wake Forest	7-1-0
10.	Texas A&M	3-3-0
11.	Florida	5-2-0
12.	Santa Clara	5-2-0
13.	South Carolina	6-0-0
14.	Notre Dame	3-3-0
15.	Georgia	6-0-1
16.	Rutgers	4-1-1
17.	Kansas	7-1-1
18.	Purdue	5-2-0
19.	Maryland	7-0-0
20.	UCF	5-1-1
21.	Illinois	5-3-1
22.	West Virginia	3-2-4
23.	Connecticut	6-2-0
24.	Michigan State	6-0-2
25.	BYU	6-2-1



KENTUCKY (3-2-3)

QUICK FACTS

Location Lexington, Ky.
Nickname Wildcats
Colors Blue & White
Conference SEC
Head Coach Jon Lipsitz
Record at School (Years) First Season
Career Record (Years) 101-33-8 (7 yrs)
Assistant Coaches Willie Gage, Michelle Rayner

2008 Record 5-12-2
Conference Finish 3-7-1 (11th)
Postseason None
Series Record Kentucky leads, 10-4-0
Last Meeting USC, 2-0 (10/3/08)
Letterwinners Returning/Lost 18/7
Starters Returning/Lost 8/3

Soccer SID John Hayden
SID E-mail John.Hayden@uky.edu
SID Phone (859) 257-8429
Website www.UKathletics.com

PROBABLE STARTERS

No.	Name	Pos	Yr.	GP	G	A	Pts.	Shots
6	Leslie Twehues	D	Fr.	8	0	0	0	0
8	Taylor Ray	M	So.	8	0	0	0	3
9	Julie Hull	D	Sr.	8	0	0	0	2
11	Jenna Goblirsch	D	So.	8	2	1	5	4
15	Kiandra McGee	F	So.	8	0	1	1	2
16	Katie Fahey	F	Sr.	8	0	0	0	3
23	Ashley Stack	D	Sr.	8	0	0	0	2
24	Stefani Kildare	M	Sr.	8	1	0	2	4
27	Kirsten Robinson	F	Fr.	7	1	1	3	3
30	Alyssa Telang	M	Fr.	8	0	0	0	8

No.	Name	Pos.	Yr.	Min.	GA	GAA.	Svs.	W-L	SO
00	Sydney Hiance	GK	Jr.	780:00	4	0.46	20	3-2-3	5--

SOUTH CAROLINA WEEKLY RANKINGS

Week	NSCAA	South Region	S.Times	S.America	TOP DRAWER	CollegeSoccer360
Preseason	-	N/A	-	-	45	-
Week 1 (8/24)	rv	4	-	-	43	-
Week 2 (8/31)	rv	2	rv	-	41	-
Week 3 (9/7)	18	2	23	25	26	23
Week 4 (9/14)	13	3	15	12	20	13
Week 5 (9/21)	12	2	13	11	18	11



**2009 South Carolina Women's Soccer
South Carolina Game Results (as of Sep 20, 2009)
All games**

Date	Opponent	Score	Overall	Conf	Att.	Goals scored
Aug 27	COL. OF CHARLESTON	W 2-0	1-0-0	0-0-0	612	Kim Miller (unassisted) Kayla Grimsley (Lindsay Small)
Aug 30	WESTERN CAROLINA	W 2-0	2-0-0	0-0-0	489	Kayla Grimsley (Ellen Fahey) Kim Miller (Sam Diaz-Matosas)
09-04-0	at Louisville	W 3-0	3-0-0	0-0-0	1103	Lindsay Small (Kim Miller) Christine Watts (unassisted) Kayla Grimsley (Sam Diaz-Matosas)
09-06-0	vs Cincinnati Bearcats	W 4-0	4-0-0	0-0-0	229	Blakely Mattern (Ellen Fahey;Sam Diaz-Matosas) Sam Diaz-Matosas (Kayla Grimsley) Megan Fligg (Kim Miller) Maria Petroni (Kim Miller)
Sep 11	at Clemson	W 5-0	5-0-0	0-0-0	917	Shannon Bigbie (Kim Miller;Brooke Jacobs) Blakely Mattern (Kim Miller) Brooke Jacobs (Christine Watts) Kayla Grimsley (unassisted) Blakely Mattern (unassisted)
Sep 13	vs UNC Wilmington	W 2-0	6-0-0	0-0-0	155	Blakely Mattern (Kortney Rhoades) Kayla Grimsley (Ellen Fahey;Kacie Brewer)
Sep 18	#17 UCF	W 1-0	7-0-0	0-0-0	1424	Kayla Grimsley (Ellen Fahey)
Sep 20	SOUTH ALABAMA	W 6-1	8-0-0	0-0-0	443	Lindsay Small (Kim Miller) Sam Diaz-Matosas (unassisted) Natalie Aaron (Brooke Jacobs) Kayla Grimsley (Kortney Rhoades) Lolly Holland (Blakely Mattern) Kacie Brewer (Maria Petroni;Natalie Aaron)

Team Record	W-L-T	Attendance	Dates	Total	Avg.
Overall:	8-0	Total:	8	5372	672
Conference:	0-0	Home:	4	2968	742
Home:	4-0	Away:	2	2020	1010
Away:	2-0	Neutral:	2	384	192
Neutral:	2-0				
Overtime:	0-0				



**2009 South Carolina Women's Soccer
South Carolina Combined Team Statistics (as of Sep 20, 2009)
All games**

RECORD:	OVERALL	HOME	AWAY	NEUTRAL
ALL GAMES	8-0	4-0	2-0	2-0
CONFERENCE	0-0	0-0	0-0	0-0
NON-CONFERENCE	8-0	4-0	2-0	2-0

Date	Opponent	Score	Att.	#	Player	gp	g	a	pts	sh	sh%	sog	sog%	gw	pk-att
Aug 27	COL. OF CHARLESTON	W 2-0	612	4	Kayla Grimsley	8	7	1	15	13	.538	10	.769	2	0-0
Aug 30	WESTERN CAROLINA	W 2-0	489	5	Kim Miller	8	2	6	10	11	.182	5	.455	1	0-0
09-04-0	at Louisville	W 3-0	1103	7	Blakely Mattern	8	4	1	9	8	.500	6	.750	2	0-0
09-06-0	vs Cincinnati Bearcats	W 4-0	229	3	Sam Diaz-Matosas	8	2	3	7	7	.286	5	.714	1	0-0
Sep 11	at Clemson	W 5-0	917	16	Lindsay Small	8	2	1	5	12	.167	6	.500	1	0-0
Sep 13	vs UNC Wilmington	W 2-0	155	27	Brooke Jacobs	8	1	2	4	15	.067	9	.600	0	0-0
Sep 18	#17 UCF	W 1-0	1424	20	Ellen Fahey	8	0	4	4	0	.000	0	.000	0	0-0
Sep 20	SOUTH ALABAMA	W 6-1	443	8	Christine Watts	8	1	1	3	10	.100	4	.400	0	0-0

TEAM STATISTICS	SC	OPP
SHOT STATISTICS		
Goals-Shot attempts	25-122	1-58
Goals scored per game	3.12	0.12
Shot pct.	.205	.017
Shots on goal-Attempts	70-122	31-58
SOG pct.	.574	.534
Shots/Game	15.2	7.2
CORNER KICKS	42	18
PENALTY KICKS	0-0	0-0
PENALTIES		
Yellow cards	2	4
Red cards	0	0
ATTENDANCE		
Total	2968	2020
Dates/Avg Per Date	4/742	2/1010
Neutral Site #/Avg	2/192	

23	Kacie Brewer	8	1	1	3	4	.250	4	1.000	0	0-0
10	Natalie Aaron	7	1	1	3	4	.250	1	.250	0	0-0
9	Maria Petroni	5	1	1	3	3	.333	2	.667	0	0-0
14	Lolly Holland	4	1	0	2	6	.167	2	.333	0	0-0
12	Shannon Bigbie	6	1	0	2	2	.500	2	1.000	1	0-0
2	Megan Fligg	8	1	0	2	2	.500	2	1.000	0	0-0
15	Kortney Rhoades	8	0	2	2	7	.000	3	.429	0	0-0
18	Ali Glemser	7	0	0	0	6	.000	4	.667	0	0-0
19	Kira Campbell	6	0	0	0	5	.000	2	.400	0	0-0
22	Dani Henry	8	0	0	0	3	.000	0	.000	0	0-0
21	Brittany Rhoades	8	0	0	0	3	.000	2	.667	0	0-0
25	Maddy Kill	6	0	0	0	1	.000	1	1.000	0	0-0
29	Mollie Patton	8	0	0	0	0	.000	0	.000	0	0-0
28	Brittany DeWitt	4	0	0	0	0	.000	0	.000	0	0-0
26	Rae Wilson	4	0	0	0	0	.000	0	.000	0	0-0
17	Maggie Blackwell	2	0	0	0	0	.000	0	.000	0	0-0
11	Idana DeCecco	2	0	0	0	0	.000	0	.000	0	0-0
6	Samantha Abraham	1	0	0	0	0	.000	0	.000	0	0-0
1	Roya Mojarab	1	0	0	0	0	.000	0	.000	0	0-0
Total		8	25	24	74	122	.205	70	.574	8	0-0
Opponents		8	1	1	3	58	.017	31	.534	0	0-0

#	Goalie	GP	Min.	GA	GAAvg	Saves	Pct	W-L-T	Sh
29	Mollie Patton	8	689:32	0	0.00	28	1.000	6-0-0	
1	Roya Mojarab	1	30:28	1	2.95	2	.667	0-0-0	
	Total	8	720:00	1	0.12	30	.968	6-0-0	
	Opponents	8	720:00	25	3.12	45	.643	0-6-0	

Goals by Period	1st	2nd	Total
South Carolina	14	11	25
Opponents	0	1	1

Shots by Period	1st	2nd	Total
South Carolina	68	54	122
Opponents	18	40	58

Saves by Period	1st	2nd	Total
South Carolina	10	20	30
Opponents	26	19	45

Corners by Period	1st	2nd	Total
South Carolina	27	15	42
Opponents	4	14	18

Fouls by Period	1st	2nd	Total
South Carolina	29	32	61



SOUTH CAROLINA MATCH-BY-MATCH STATISTICS

DATE	OPPONENT	G	A	PTS	SH	PCT	SOG	SOG%	CORNERS	FOULS	YC	SAVES	GA
8/27	Col. Charleston	2	2	6	11	.182	7	.636	3	7	0	1	0
8/31	Western Carolina	2	2	6	11	.182	7	.636	6	4	0	0	0
9/4	Louisville	3	2	8	12	.250	8	.667	7	10	0	6	0
9/6	Cincinnati	4	5	13	22	.182	15	.682	7	7	0	5	0
9/11	Clemson	5	4	14	12	.417	7	.583	4	9	1	6	0
9/13	UNC Wilmington	2	3	7	23	.087	9	.391	3	7	0	6	0
9/18	#17 UCF	1	1	3	8	.125	4	.500	6	10	1	3	0
9/20	South Alabama	6	6	18	23	.261	13	.565	6	7	0	3	1
9/25	Vanderbilt												
9/27	Kentucky												
10/2	Ole Miss												
10/4	Mississippi State												
10/9	Auburn												
10/11	Alabama												
10/16	Georgia												
10/18	Tennessee												
10/22	Arkansas												
10/25	LSU												
10/30	Florida												
11/4	SEC Tournament												

South Carolina

Bold - Season-High

OPPONENT MATCH-BY-MATCH STATISTICS

DATE	OPPONENT	G	A	PTS	SH	PCT	SOG	SOG%	CORNERS	FOULS	YC	SAVES	GA
8/27	Col. Charleston	0	0	0	2	.000	1	.500	3	7	0	5	2
8/31	Western Carolina	0	0	0	0	N/A	0	N/A	1	9	0	5	2
9/4	Louisville	0	0	0	10	.000	6	.600	3	10	0	5	3
9/6	Cincinnati	0	0	0	10	.000	5	.500	2	12	0	11	4
9/11	Clemson	0	0	0	12	.000	6	.500	4	8	1	2	5
9/13	UNC Wilmington	0	0	0	8	.000	6	.750	0	10	0	7	2
9/18	#17 UCF	0	0	0	12	.000	3	.250	3	11	1	3	1
9/20	South Alabama	1	1	3	4	.250	4	1.000	2	9	0	7	6
9/25	Vanderbilt												
9/27	Kentucky												
10/2	Ole Miss												
10/4	Mississippi State												
10/9	Auburn												
10/11	Alabama												
10/16	Georgia												
10/18	Tennessee												
10/22	Arkansas												
10/25	LSU												
10/30	Florida												
11/4	SEC Tournament												

Opponents



GAME-BY-GAME INDIVIDUAL LEADERS

DATE	OPPONENT	W/L	SCORE	HIGH SHOTS	HIGH SOG	HIGH GOALS	HIGH ASSISTS	HIGH POINTS
8/27	Col. Charleston	W	2-0	Miller, K. Rhoades (2)	K. Rhoades (2)	Miller, Grimsley (1)	Small (1)	Miller, Grimsley (2)
8/31	Western Carolina	W	2-0	Diaz, Miller, Grimsley (2)	Diaz, Grimsley (2)	Miller, Grimsley (1)	Fahey, Diaz-Matosas (1)	Miller, Grimsley (2)
9/4	Louisville	W	3-0	Watts (3)	Grimsley, Watts (2)	Small, Grimsley, Watts (1)	Miller, Diaz-Matosas (1)	Small, Watts, Grim (2)
9/6	Cincinnati	W	4-0	Small (5)	Mattern, Small (3)	4 players (1)	Miller (2)	Diaz-Matosas (3)
9/11	Clemson	W	5-0	Campbell (4)	Mattern, Campbell (2)	Mattern (2)	Miller (2)	Mattern (4)
9/13	UNC Wilmington	W	2-0	Jacobs (5)	Jacobs (2)	Mattern, Grimsley (1)	Rhoades, Fahey, Brewer (1)	Mattern, Grimsley (2)
9/18	#17 UCF	W	1-0	Diaz-Matosas (2)	4 players (1)	Grimsley (1)	Fahey (1)	Grimsley (2)
9/20	South Alabama	W	6-1	Jacobs, Grimsley (4)	Brewer (3)	6 players (1)	6 players (1)	6 players (2)
9/25	Vanderbilt							
9/27	Kentucky							
10/2	Ole Miss							
10/4	Mississippi State							
10/9	Auburn							
10/11	Alabama							
10/16	Georgia							
10/18	Tennessee							
10/22	Arkansas							
10/25	LSU							
10/30	Florida							
11/4	SEC Tournament							

GAME-BY-GAME STARTERS

DATE	OPPONENT	W/L	F	F	M/F	M	M	M	D	D	D	D	GK
8/27	Col. Charleston	W	Jacobs	Grimsley	Campbell	Miller	Small	K. Rhoades	Mattern	Diaz-Matosas	Fahey	B. Rhoades	Patton
8/31	Western Carolina	W	Jacobs	Grimsley	Campbell	Miller	Small	K. Rhoades	Mattern	Diaz-Matosas	Fahey	B. Rhoades	Patton
9/4	Louisville	W	Jacobs	Grimsley	Campbell	Miller	Small	K. Rhoades	Mattern	Diaz-Matosas	Fahey	B. Rhoades	Patton
9/6	Cincinnati	W	Jacobs	Grimsley	Campbell	Miller	Small	K. Rhoades	Mattern	Diaz-Matosas	Fahey	B. Rhoades	Patton
9/11	Clemson	W	Jacobs	Grimsley	Campbell	Miller	Small	Bigbie	Mattern	Diaz-Matosas	Fahey	B. Rhoades	Patton
9/13	UNC Wilmington	W	Jacobs	Grimsley	Campbell	Miller	Small	K. Rhoades	Mattern	Diaz-Matosas	Fahey	Bigbie	Patton
9/18	#17 UCF	W	Jacobs	Grimsley	Bigbie	Miller	Small	K. Rhoades	Mattern	Diaz-Matosas	Fahey	B. Rhoades	Patton
9/20	South Alabama	W	Jacobs	Grimsley	Bigbie	Miller	Small	K. Rhoades	Mattern	Fligg	Fahey	B. Rhoades	Patton
9/25	Vanderbilt												
9/27	Kentucky												
10/2	Ole Miss												
10/4	Mississippi State												
10/9	Auburn												
10/11	Alabama												
10/16	Georgia												
10/18	Tennessee												
10/22	Arkansas												
10/25	LSU												
10/30	Florida												
11/4	SEC Tournament												



HOME-ONLY INDIVIDUAL STATISTICS

##	PLAYER	GP-GS	G	A	PTS	SH	PCT	SOG	SOG%	GWG	GWA
2	Megan Fligg	4-1	0	0	0	1	.000	1	1.000	0	0
3	Samantha Diaz-Matosas	4-3	1	1	3	5	.200	4	.800	1	0
4	Kayla Grimsley	4-4	4	0	8	8	.500	6	.750	2	0
5	Kim Miller	4-4	2	1	5	6	.333	2	.333	1	0
6	Samantha Abraham	1-0	0	0	0	0	.000	0	.000	0	0
7	Blakely Mattern	4-4	0	1	1	0	.000	0	.000	0	0
8	Christine Watts	4-0	0	0	0	3	.000	1	.333	0	0
9	Maria Petroni	2-0	0	1	1	1	.000	0	.000	0	0
10	Natalie Aaron	4-0	1	1	3	3	.333	1	.333	0	0
11	Idana DeCecco	1-0	0	0	0	0	.000	0	.000	0	0
12	Shannon Bigbie	2-2	0	0	0	0	.000	0	.000	0	0
13	Jocelyn Spurrier	0-0	0	0	0	0	.000	0	.000	0	0
14	Lolly Holland	2-0	1	0	2	2	.500	1	.500	0	0
15	Kortney Rhoades	4-4	0	1	1	3	.000	2	.667	0	0
16	Lindsay Small	4-4	1	1	3	4	.250	1	.250	0	0
17	Maggie Blackwell	1-0	0	0	0	0	.000	0	.000	0	0
18	Ali Glemser	4-0	0	0	0	4	.000	3	.750	0	0
19	Kira Campbell	2-2	0	0	0	0	.000	0	.000	0	0
20	Ellen Fahey	4-4	0	2	2	0	.000	0	.000	0	2
21	Brittany Rhoades	4-4	0	0	0	1	.000	0	.000	0	0
22	Dani Henry	4-0	0	0	0	2	.000	0	.000	0	0
23	Kacie Brewer	4-0	1	0	2	4	.250	4	1.000	0	0
25	Maddy Kill	3-0	0	0	0	1	.000	1	1.000	0	0
26	Rae Wilson	2-0	0	0	0	0	.000	0	.000	0	0
27	Brooke Jacobs	4-4	0	1	1	6	.000	4	.750	0	0
28	Brittany DeWitt	2-0	0	0	0	0	.000	0	.000	0	0
TEAM											
South Carolina		4	11	10	32	53	.344	31	.585	4	2
Opponents		4	1	1	3	18	.056	8	.444	0	0

GOALKEEPERS

	GP-GS	Min.	GA	GAA.	Svs.	Save %	W-L	SO	
0	Alex Holland	0-0	00:00	0	0.00	0	0-0-0	0	
1	Roya Mojarab	1-0	30:28	1	2.95	2	0-0-0	0	
29	Mollie Patton	4-4	329:32	0	0.00	2	4-0-0	3	
35	Darien Vercillo	0-0	00:00	0	0.00	0	0-0-0	0	
TEAM									
South Carolina		4	360:00	1	0.25	7	.875	4-0-0	3
Opponents		4	360:00	11	2.75	20	.645	0-4-0	0

HOME-ONLY TEAM STATS

SCORING	USC	OPP
Goals.....	11	1
Assists.....	10	1
Points.....	32	3
SHOTS		
Shots	53	18
Pct.344	.056
Shots On Goal.....	31	8
SOG%.....	.585	.444
FOULS		
Fouls	28	36
Cards	1	1
GOALKEEPING		
Saves	7	20
Goals Against.....	1	11
GAA	0.25	2.75



AWAY-ONLY INDIVIDUAL STATISTICS

##	PLAYER	GP-GS	G	A	PTS	SH	PCT	SOG	SOG%	GWG	GWA
2	Megan Fligg	4-0	1	0	2	1	1.000	1	1.000	0	0
3	Samantha Diaz-Matosas	4-4	1	2	4	2	.500	1	.500	0	1
4	Kayla Grimsley	4-4	3	1	7	5	.600	4	.800	0	0
5	Kim Miller	4-4	0	5	5	5	.000	3	.600	0	2
6	Samantha Abraham	0-0	0	0	0	0	.000	0	.000	0	0
7	Blakely Mattern	4-4	4	0	8	8	.500	6	.750	2	0
8	Christine Watts	4-0	1	1	3	7	.143	3	.429	0	0
9	Maria Petroni	3-0	1	0	2	2	.500	2	1.000	0	0
10	Natalie Aaron	4-0	0	0	0	1	.000	0	.000	0	0
11	Idana DeCecco	1-0	0	0	0	0	.000	0	.000	0	0
12	Shannon Bigbie	4-2	1	0	2	2	.500	2	1.000	1	0
13	Jocelyn Spurrier	0-0	0	0	0	0	.000	0	.000	0	0
14	Lolly Holland	2-0	0	0	0	4	.000	1	.250	0	0
15	Kortney Rhoades	4-3	0	1	1	4	.000	1	.250	0	1
16	Lindsay Small	4-4	1	0	2	9	.111	5	.556	1	0
17	Maggie Blackwell	1-0	0	0	0	0	.000	0	.000	0	0
18	Ali Glemser	3-0	0	0	0	2	.000	1	.500	0	0
19	Kira Campbell	4-4	0	0	0	4	.000	2	.500	0	0
20	Ellen Fahey	4-4	0	2	2	0	.000	0	.000	0	1
21	Brittany Rhoades	4-3	0	0	0	2	.000	2	1.000	0	0
22	Dani Henry	4-0	0	0	0	1	.000	0	.000	0	0
23	Kacie Brewer	4-0	0	1	1	0	.000	0	.000	0	0
25	Maddy Kill	3-0	0	0	0	0	.000	0	.000	0	0
26	Rae Wilson	2-0	0	0	0	0	.000	0	.000	0	0
27	Brooke Jacobs	4-4	1	1	3	9	.111	5	.556	0	1
28	Brittany DeWitt	1-0	0	0	0	0	.000	0	.000	0	0
TEAM											
South Carolina		4	14	14	42	69	.203	39	.565	4	6
Opponents		4	0	0	0	40	.000	23	.575	0	0

GOALKEEPERS

	GP-GS	Min.	GA	GAA.	Svs.	Save %	W-L	SO
0	Alex Holland	0-0	00:00	0	0.00	0	0-0-0	0
1	Roya Mojarab	0-0	00:00	0	0.00	0	0-0-0	0
29	Mollie Patton	4-4	360:00	0	0.00	23	4-0-0	4
35	Darien Vercillo	0-0	00:00	0	0.00	0	0-0-0	0
TEAM								
South Carolina		4	360:00	0	0.00	23	4-0-0	4
Opponents		4	360:00	14	3.50	25	0-4-0	0

AWAY-ONLY TEAM STATS

SCORING	USC	OPP
Goals.....	14	0
Assists.....	14	0
Points.....	42	0
SHOTS		
Shots	69	40
Pct.203	.000
Shots On Goal.....	39	23
SOG%.....	.565	.575
FOULS		
Fouls.....	33	40
Cards	1	1
GOALKEEPING		
Saves	23	25
Goals Against.....	0	14
GAA000	3.50



EXHIBITION - MEXICAN NAT'L TEAM (2-0)

Soccer Box Score (Final)
The Automated ScoreBook For Soccer
Mexico U20 vs South Carolina (Aug 21, 2009 at Greenville, S.C.)

Mexico U20 vs. South Carolina
 Date: Aug 21, 2009 • Attendance: 3000
 Weather:

Po #	Player	Sh	SO	G	A	Min
gk 1	Erika VANEAGAS	-	-	-	-	90
d 3	Marlene SANDOVAL	-	-	-	-	90
d 4	Marilyn DIAZ	-	-	-	-	90
d 5	Maria CASTILLO	1	-	-	-	90
m 6	Monica VERGARA	1	-	-	-	90
f 9	Monica OCAÑO	6	5	-	-	90
d 13	Lourdes GORDILLO	-	-	-	-	90
d 14	Leticia VILLALPANDO	-	-	-	-	90
d 15	Luz SAUCEDO	2	-	-	-	72
m 16	Mirelle ARCIENIEGA	-	-	-	-	72
m 17	Tania MORALES	1	-	-	-	90
-- Substitutes --						
8	Asley KOTERO	-	-	-	-	18
10	Norma MENDEZ	-	-	-	-	18
Totals		11	5	0	0	

#	Goalkeepers	Min	GA	Saves
1	Erika VANEAGAS	90:00	2	4

Shots by period	1	2	Total
Mexico U20	5	6	11
South Carolina	7	5	12

Corner kicks	1	2	Total
Mexico U20	3	1	4
South Carolina	2	0	2

Scoring summary:

No.	Time	Team	Goal scorer	Assist	Description
1.	31:43	SC	Christine Watts	Brittany Rhoades	In box
2.	35:12	SC	Sam Diaz-Matosas	Kayla Grimsley	Cross from right into box, inside corner

Cautions and ejections:
 YC-SC #20 (62:36)

Stadium: MeSA Soccer Complex
 Officials:
 Offsides: Mexico U20 1, South Carolina 3.

Official's signature

GAME 2 - WCU (2-0)

Soccer Box Score (Final)
2009 South Carolina Women's Soccer
Western Carolina vs South Carolina (Aug 30, 2009 at Columbia, S.C.)

Western Carolina (2-1-0) vs. South Carolina (2-0-0)
 Date: Aug 30, 2009 • Attendance: 489
 Weather:

Po #	Player	Sh	SO	G	A	Min
gk 00	Caitlin Williams	-	-	-	-	90
m 7	Liz Eichler	-	-	-	-	34
m 8	Kayla Beaudouy	-	-	-	-	62
f 11	Nikki Collins	-	-	-	-	50
m 14	Samantha Hodge	-	-	-	-	69
f 16	Shannon Fowkes	-	-	-	-	72
d 18	Jenny Matteson	-	-	-	-	90
f 19	Rachael Shomper	-	-	-	-	72
m 21	Renee Anderson	-	-	-	-	57
m 23	Shanna Schmoker	-	-	-	-	78
m 24	Nikki Lombardo	-	-	-	-	78
-- Substitutes --						
5	Bri Cunningham	-	-	-	-	29
10	Kellie Oberholtzer	-	-	-	-	41
12	Hilary Holder	-	-	-	-	56
13	Erin Hamilton	-	-	-	-	18
17	Katie Kole	-	-	-	-	30
20	Elizabeth Kozlowski	-	-	-	-	12
26	Lindsay Carter	-	-	-	-	54
Totals		0	0	0	0	

#	Goalkeepers	Min	GA	Saves
00	Caitlin Williams	90:00	2	5

Shots by period	1	2	Total
Western Carolina	0	0	0
South Carolina	6	5	11

Corner kicks	1	2	Total
Western Carolina	1	0	1
South Carolina	4	2	6

Scoring summary:

No.	Time	Team	Goal scorer	Assist	Description
1.	22:38	SC	Kayla Grimsley	Ellen Fahey	Breakaway at midfield after clearance
2.	26:49	SC	Kim Miller (2)	Sam Diaz-Matosas	#3 shot saved, deflection to #5

Cautions and ejections:

Stadium: Stone Stadium
 Officials: Referee: Joe Balazs; Asst. Referee: Alan Correa; Steve Abbott;
 Timekeeper: Adrienne Cunningham; Scorer: Miquel Jacobs;
 Offsides: Western Carolina 0, South Carolina 4.

Official's signature

GAME 1 - CoFC (2-0)

Soccer Box Score (Final)
The Automated ScoreBook For Soccer
Col. of Charleston vs South Carolina (Aug 27, 2009 at Columbia, S.C.)

Col. of Charleston (0-1-0) vs. South Carolina (1-0-0)
 Date: Aug 27, 2009 • Attendance: 612
 Weather:

Po #	Player	Sh	SO	G	A	Min
gk 0	Sarah Wiggers	-	-	-	-	90
m 2	Hope Atkinson	-	-	-	-	25
d 3	Amanda Raymond	1	-	-	-	90
m 6	Hannah Gmerek	-	-	-	-	55
d 7	Emily Morgan	1	1	-	-	90
m 10	Julie Romanik	-	-	-	-	59
d 11	Brittany Schneider	-	-	-	-	90
m 12	Morgan Benz	-	-	-	-	61
d 20	Annie Pease	-	-	-	-	90
f 23	Alyssa Bearden	-	-	-	-	52
m 26	Sarah Schaldie	-	-	-	-	65
-- Substitutes --						
8	Christy Barrow	-	-	-	-	37
9	Chrissy Caruso	-	-	-	-	38
13	Lindsay Frey	-	-	-	-	2
14	Christian Patton	-	-	-	-	31
18	Katie Turner	-	-	-	-	27
21	Liz Miller	-	-	-	-	60
25	Haley Hutchens	-	-	-	-	41
28	Betsy Stewart	-	-	-	-	0
Totals		2	1	0	0	

#	Goalkeepers	Min	GA	Saves
0	Sarah Wiggers	90:00	2	5

Shots by period	1	2	Total
Col. of Charleston	0	2	2
South Carolina	6	5	11

Corner kicks	1	2	Total
Col. of Charleston	0	3	3
South Carolina	2	1	3

Scoring summary:

No.	Time	Team	Goal scorer	Assist	Description
1.	13:42	SC	Kim Miller (1)	(unassisted)	Free kick 25 yards out, center, top of net
2.	29:54	SC	Kayla Grimsley (1)	Lindsay Small	Beat defender, ball into far corner

Cautions and ejections:

Stadium: Stone Stadium
 Officials: Referee: Jeremy Brooks; Asst. Referee: John Tanverdi; Kenneth Ayers;
 Timekeeper: Bryan Powell; Scorer: Miquel Jacobs;
 Offsides: Col. of Charleston 1, South Carolina 2.

Official's signature

GAME 3 - LOUISVILLE (3-0)

Soccer Box Score (Final)
2009 South Carolina Women's Soccer
South Carolina vs Louisville (09-04-09 at Louisville, Ky.)

South Carolina (3-0) vs. Louisville (1-2)
 Date: 09-04-09 • Attendance: 1103
 Weather:

Po #	Player	Sh	SO	G	A	Min
gk 29	Mollie Patton	-	-	-	-	90
d 3	Sam Diaz-Matosas	-	-	-	-	76
f 4	Kayla Grimsley	2	2	1	-	79
m 5	Kim Miller	-	-	-	-	79
d 7	Blakely Mattern	-	-	-	-	90
m 15	Kortney Rhoades	-	-	-	-	22
m 16	Lindsay Small	1	1	1	-	79
m 19	Kira Campbell	1	-	-	-	40
d 20	Ellen Fahey	-	-	-	-	90
d 21	Brittany Rhoades	1	1	-	-	81
f 27	Brooke Jacobs	1	1	-	-	79
-- Substitutes --						
2	Megan Fligg	-	-	-	-	15
8	Christine Watts	3	2	1	-	57
9	Marla Petroni	1	1	-	-	16
10	Natalie Aaron	1	-	-	-	14
12	Shannon Bigbie	-	-	-	-	53
22	Dani Henry	1	-	-	-	15
23	Kacie Brewer	-	-	-	-	14
Totals		12	8	3	2	

#	Goalkeepers	Min	GA	Saves
29	Mollie Patton	90:00	0	6

Shots by period	1	2	Total
South Carolina	7	5	12
Louisville	4	6	10

Corner kicks	1	2	Total
South Carolina	4	3	7
Louisville	0	3	3

Scoring summary:

No.	Time	Team	Goal scorer	Assist	Description
1.	27:09	SC	Lindsay Small	Kim Miller	Header from 3 yards off corner kick.
2.	43:52	SC	Christine Watts	(unassisted)	Upper right corner from 17 yards out.
3.	89:51	SC	Kayla Grimsley	Sam Diaz-Matosas	

Cautions and ejections:

Stadium: Cardinal Park
 Officials: Referee: Kelly R. Ross; Asst. Referee: Rachel Bramlage; Andy Ellsworth;
 Alt. Official: Mike Dutt; Timekeeper: Kent Jennings; Scorer: Garrett Wall;
 Offsides: South Carolina 4, Louisville 2.

Official's signature



GAME 8 - South Alabama (6-1)

GAME 9

Soccer Box Score (Final) 2009 South Carolina Women's Soccer

South Alabama vs. #12 South Carolina (Sep 20, 2009 at Columbia, S.C.)

South Alabama (2-6-0) vs.

South Carolina (8-0-0)

Date: Sep 20, 2009 • Attendance: 443

Weather:

Goals by period	1	2	Total
South Alabama	0	1	1
South Carolina	3	3	6

South Alabama

Po ## Player	Sh	SO	G	A	Min
gk 1 Lythjohan,Cassie	-	-	-	-	90
m 4 Parsons,Natalie	-	-	-	-	84
d 7 Stover,Sam	1	1	-	-	90
f 10 Smith,Brandi	1	1	-	-	74
m 11 Sutton,Kristin	-	-	-	-	29
f 12 Clark,Liz	-	-	-	1	64
d 15 Francis,Shundel	-	-	-	-	75
m 18 Stocker,Sam	1	1	1	-	90
d 21 Frakes,Alle	-	-	-	-	90
d 24 Crowe,Kasey	-	-	-	-	75
m 27 Pannell, Rylie	-	-	-	-	63
-- Substitutes --					
3 Shelton,Whitney	-	-	-	-	1
5 Sanders,Jasmine	-	-	-	-	35
6 Falgout,Rebecca	-	-	-	-	43
8 Owada,Nanae	-	-	-	-	1
13 Conrad,Kayla	-	-	-	-	15
14 Hosford,Laura	-	-	-	-	6
17 Glause,Sandi	-	-	-	-	25
20 Mcnaughton,Katelyn	-	-	-	-	1
25 Wilson, Landi	1	1	-	-	59
Totals	4	4	1	1	

South Carolina

Po ## Player	Sh	SO	G	A	Min
gk 29 Mollie Patton	-	-	-	-	60
d 2 Megan Fligg	-	-	-	-	64
f 4 Kayla Grimsley	4	2	1	-	39
m 5 Kim Miller	1	-	-	1	62
d 7 Blakely Mattern	-	-	-	1	60
f 12 Shannon Bigbie	-	-	-	-	38
m 15 Kortney Rhoades	-	-	-	1	31
m 16 Lindsay Small	1	1	1	-	70
d 20 Ellen Fahey	-	-	-	-	60
d 21 Brittany Rhoades	-	-	-	-	39
f 27 Brooke Jacobs	4	2	-	1	46
-- Substitutes --					
1 Roya Mojarab	-	-	-	-	30
3 Sam Diaz-Matosas	1	1	1	-	31
8 Christine Watts	1	1	-	-	33
9 Maria Petroni	1	-	-	1	27
10 Natalie Aaron	2	1	1	1	47
11 Idiana DeCecco	-	-	-	-	26
14 Lolly Holland	2	1	1	-	26
17 Maggie Blackwell	-	-	-	-	30
18 Ali Glemser	2	1	-	-	27
22 Dani Henry	1	-	-	-	53
23 Kacie Brewer	3	3	1	-	36
25 Maddy Kill	-	-	-	-	29
28 Brittany DeWitt	-	-	-	-	26
Totals	23	13	6	6	

## Goalkeepers	Min	GA	Saves
1 Lythjohan,Cassie	90:00	6	7

## Goalkeepers	Min	GA	Saves
29 Mollie Patton	59:32	0	1
1 Roya Mojarab	30:28	1	2

Shots by period	1	2	Total
South Alabama	1	3	4
South Carolina	13	10	23

Saves by period	1	2	Total
South Alabama	5	2	7
South Carolina	1	2	3

Corner kicks	1	2	Total
South Alabama	0	2	2
South Carolina	4	2	6

Fouls	1	2	Total
South Alabama	3	6	9
South Carolina	4	3	7

Scoring summary:

No.	Time	Team	Goal scorer	Assist	Description
1.	3:30	SC	Lindsay Small (2)	Kim Miller	15 yards out
2.	19:03	SC	Sam Diaz-Matosas (2)	Corner kick	In off corner
3.	27:34	SC	Natalie Aaron (1)	Brooke Jacobs	Cross to #10, open shot
4.	55:53	SC	Kayla Grimsley (7)	Kortney Rhoades	1v1 with keeper
5.	59:32	SC	Lolly Holland (1)	Blakely Mattern	Cleared up, alone with keeper
6.	73:39	SC	Kacie Brewer (1)	Maria Petroni	Header in front of goal
7.	85:46	USA	Stocker,Sam (1)	Natalie Aaron	Header in front of goal
				Clark,Liz	Strike from 25 yards out, over keeper hands

Cautions and ejections:

Stadium: Stone Stadium
 Officials: Referee: Alan Schechtman; Asst. Referee: Kevin Tempel; Karen Tempel;
 Offsides: South Alabama 0, South Carolina 5.

Official's signature

GAME 10

GAME 11



#0 Alex Holland
GK • 5-7 • Fr.

Bests	Season	Career
Saves:	N/A	Same
Minutes:	N/A	Same

Career Statistics

YEAR	GP/GS	MIN	SVS	GA	GAA	SHO
2009	0-0	0	0	0	0	0
TOTALS	0-0	0	0	0	0	0



#1 Roya Mojarab
GK • 5-4 • So.

Bests	Season	Career
Saves:	2, (9/20)	Same
Minutes:	30:28, (9/20)	Same

Career Statistics

YEAR	GP/GS	MIN	SVS	GA	GAA	SHO
2008	1-0	13:07	0	0	0.00	0
2009	1-0	30:28	2	1	2.95	0
TOTALS	2-0	43:35	2	1	2.06	0



#2 Megan Fligg
D • 5-6 • Fr.

Bests	Season	Career
Goals:	1, (9/6)	Same
Assists:	N/A	Same
Points:	2, (9/6)	Same
Shots:	1, 2x* (9/6)	Same
SOG:	1, (9/6)	Same

Career Statistics

YEAR	GP/GS	SH	G	A	PTS	GWG
2009	8-1	2	1	0	2	0
TOTALS	8-1	2	1	0	2	0



#3 Samantha Diaz-Matosas
D • 5-7 • Sr.

Bests	Season	Career
Goals:	1, 2x* (9/20)	1, 7x* (9/20)
Assists:	1, 3x* (9/6)	1, 11* (9/6)
Points:	2, 2x* (9/20)	3, (10/12/08)
Shots:	2, 3x* (9/18)	3, 3x* (9/9/06)
SOG:	2, (8/30)	3, 3x* (9/9/06)

Career Statistics

YEAR	GP/GS	SH	G	A	PTS	GWG
2006	22-22	30	2	4	8	0
2007	23-18	9	1	2	4	0
2008	22-22	16	2	2	6	2
2009	8-7	7	2	3	7	1
TOTALS	75-69	62	7	11	25	3



#4 Kayla Grimsley
F • 5-4 • So.

Bests	Season	Career
Goals:	1, 7x* (9/20)	2, (10/3/08)
Assists:	1, (9/6)	1, 7x* (9/6)
Points:	2, 7x* (9/20)	4, (10/3/08)
Shots:	4, (9/20)	5, (10/5/08)
SOG:	2, 3x* (9/20)	3, (10/5/08)

Career Statistics

YEAR	GP/GS	SH	G	A	PTS	GWG
2008	22-20	37	8	6	22	2
2009	8-8	13	7	1	15	2
TOTALS	30-28	50	15	7	37	4



#5 Kim Miller
M • 5-2 • Sr.

Bests	Season	Career
Goals:	1, 2x* (8/30)	2, (10/26/08)
Assists:	2, 2x* (9/11)	2, 2x* (9/11)
Points:	2, 4x* (9/11)	4, (10/26/08)
Shots:	3, (9/6)	4, (10/28/07)
SOG:	2, (9/6)	2, 8x* (9/6)

Career Statistics

YEAR	GP/GS	SH	G	A	PTS	GWG
2006	22-20	9	0	2	2	0
2007	23-23	17	1	1	3	1
2008	22-22	36	4	3	11	2
2009	8-8	11	2	6	10	1
TOTALS	75-73	73	7	12	26	4

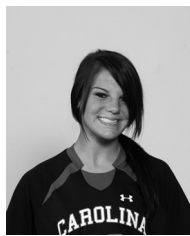


#7 Blakely Mattern
D • 5-9 • Sr.

Bests	Season	Career
Goals:	2, (9/11)	Same
Assists:	1, (9/20)	1, 6x* (9/20)
Points:	4, (9/11)	Same
Shots:	3, 2x* (9/11)	4, 2x* (11/5/08)
SOG:	3, (9/6)	Same

Career Statistics

YEAR	GP/GS	SH	G	A	PTS	GWG
2006	22-22	28	3	3	9	2
2007	23-23	18	2	2	6	0
2008	22-22	20	4	0	8	0
2009	8-8	8	4	1	9	2
TOTALS	75-75	74	13	6	32	4



#8 Christine Watts
M • 5-6 • Fr.

Bests	Season	Career
Goals:	1, (9/4)	Same
Assists:	1, (9/11)	Same
Points:	2, (9/4)	Same
Shots:	3, (9/4)	Same
SOG:	2, (9/4)	Same

Career Statistics

YEAR	GP/GS	SH	G	A	PTS	GWG
2009	8-0	10	1	1	3	0
TOTALS	8-0	10	1	1	3	0



#9 Maria Petroni
F • 5-10 • So.

Bests	Season	Career
Goals:	1, (9/6)	Same
Assists:	1, (9/20)	1, 3x* (9/20)
Points:	2, (9/6)	Same
Shots:	1, 3x* (9/20)	2, 2x* (10/3/08)
SOG:	1, 2x* (9/6)	1, 5x* (9/6)

Career Statistics

YEAR	GP/GS	SH	G	A	PTS	GWG
2008	17-7	8	0	2	2	0
2009	5-0	3	1	1	3	0
TOTALS	22-7	11	1	3	5	0



#10 Natalie Aaron
F • 5-10 • So.

Bests	Season	Career
Goals:	1, (9/20)	1, 3x* (9/20)
Assists:	1, (9/20)	1, 2x* (9/20)
Points:	3, (9/20)	Same
Shots:	2, (9/20)	5, (10/5/08)
SOG:	1, (9/20)	4, (10/17/08)

Career Statistics

YEAR	GP/GS	SH	G	A	PTS	GWG
2008	21-2	27	2	1	5	1
2009	7-0	4	1	1	3	0
TOTALS	28-2	31	3	2	8	1



#11 Idana DeCecco
D • 5-6 • So.

Bests	Season	Career
Goals:	N/A	1, (9/14/08)
Assists:	N/A	Same
Points:	N/A	2, (9/14/08)
Shots:	N/A	1, 2x* (10/10/08)
SOG:	N/A	1, (9/14/08)

Career Statistics

YEAR	GP/GS	SH	G	A	PTS	GWG
2008	15-0	2	1	0	2	0
2009	2-0	0	0	0	0	0
TOTALS	17-0	2	1	0	2	0



#12 Shannon Bigbie
F • 5-6 • Sr.

Bests	Season	Career
Goals:	1, (9/11)	1, 3x* (9/11)
Assists:	N/A	1, 5x* (10/26/08)
Points:	2, (9/11)	2, 3x* (9/11)
Shots:	1, 2x* (9/13)	5, (9/9/07)
SOG:	1, 2x* (9/13)	4, (9/9/07)

Career Statistics

YEAR	GP/GS	SH	G	A	PTS	GWG
2006	22-5	0	0	0	0	0
2007	23-8	13	1	1	3	1
2008	22-20	24	1	4	6	0
2009	6-7	2	1	0	2	1
TOTALS	73-40	39	3	5	11	2



#13 Jocelyn Spurrier
D • 5-8 • R-Fr.

Bests	Season	Career
Goals:	N/A	Same
Assists:	N/A	Same
Points:	N/A	Same
Shots:	N/A	Same
SOG:	N/A	Same

Career Statistics

YEAR	GP/GS	SH	G	A	PTS	GWG
2008	REDSHIRTED					
2009	0-0	0	0	0	0	0
TOTALS	0-0	0	0	0	0	0



#14 Lolly Holland
M • 5-4 • So.

Bests	Season	Career
Goals:	1, (9/20)	Same
Assists:	N/A	Same
Points:	2, (9/20)	Same
Shots:	4, (9/13)	Same
SOG:	1, 2x* (9/20)	Same

Career Statistics

YEAR	GP/GS	SH	G	A	PTS	GWG
2008	15-0	1	0	0	0	0
2009	4-0	6	1	0	2	0
TOTALS	19-0	7	1	0	2	0



#15 Kortney Rhoades
M • 5-4 • So.

Bests	Season	Career
Goals:	N/A	1, 3x* (10/24/08)
Assists:	1, 2x* (9/20)	2, (9/12/08)
Points:	1, 2x* (9/20)	2, 4x* (10/24/08)
Shots:	3, (9/13)	5, 2x* (10/5/08)
SOG:	2, (8/27)	2, 3x* (8/27)

Career Statistics

YEAR	GP/GS	SH	G	A	PTS	GWG
2008 (SJ)	17-13	34	3	4	10	1
2009	8-7	7	0	2	2	0
TOTALS 25-20	41	3	6	12	1	

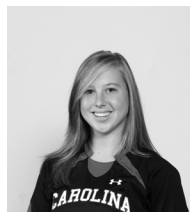


#16 Lindsay Small
M • 5-7 • Sr.

Bests	Season	Career
Goals:	1, 2x* (9/20)	1, 5x* (9/20)
Assists:	1, (8/27)	1, 2x* (8/27)
Points:	2, 2x* (9/20)	3, (9/19/08)
Shots:	5, (9/6)	6, 2x* (10/17/08)
SOG:	3, (9/6)	Same

Career Statistics

YEAR	GP/GS	SH	G	A	PTS	GWG
2006	16-0	4	0	0	0	0
2007	23-0	5	0	0	0	0
2008	22-22	35	3	1	7	2
2009	8-8	12	2	1	5	1
TOTALS 69-30	56	5	2	12	3	



#17 Maggie Blackwell
D • 5-6 • R-So.

Bests	Season	Career
Goals:	N/A	Same
Assists:	N/A	Same
Points:	N/A	Same
Shots:	N/A	Same
SOG:	N/A	Same

Career Statistics

YEAR	GP/GS	SH	G	A	PTS	GWG
2007	REDSHIRTED					
2008	0-0	0	0	0	0	0
2009	2-0	0	0	0	0	0
TOTALS 2-0	0	0	0	0	0	0



#18 Ali Glemser
F • 5-3 • R-Fr.

Bests	Season	Career
Goals:	N/A	Same
Assists:	N/A	Same
Points:	N/A	Same
Shots:	2, (9/20)	Same
SOG:	1, 4x* (9/20)	Same

Career Statistics

YEAR	GP/GS	SH	G	A	PTS	GWG
2008	REDSHIRTED					
2009	7-0	6	0	0	0	0
TOTALS 7-0	6	0	0	0	0	0



#19 Kira Campbell
M • 5-8 • So.

Bests	Season	Career
Goals:	N/A	Same
Assists:	N/A	1, (9/5/08)
Points:	N/A	1, (9/5/08)
Shots:	4, (9/11)	Same
SOG:	2, (9/11)	Same

Career Statistics

YEAR	GP/GS	SH	G	A	PTS	GWG
2008	22-12	12	0	1	1	0
2009	6-6	5	0	0	0	0
TOTALS	28-18	17	0	1	1	0

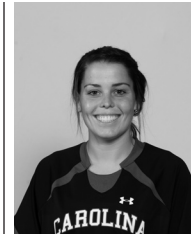


#20 Ellen Fahey
D • 5-7 • So.

Bests	Season	Career
Goals:	N/A	Same
Assists:	1, 4x* (9/18)	Same
Points:	1, 4x* (9/18)	Same
Shots:	N/A	1, (10/23/08)
SOG:	N/A	1, (10/23/08)

Career Statistics

YEAR	GP/GS	SH	G	A	PTS	GWG
2008	22-22	1	0	0	0	0
2009	8-8	0	0	4	4	0
TOTALS	30-30	1	0	4	4	0

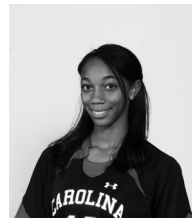


#21 Brittiny Rhoades
D • 5-3 • Jr.

Bests	Season	Career
Goals:	N/A	Same
Assists:	N/A	2, (9/26/08)
Points:	N/A	2, (9/26/08)
Shots:	1, 3x* (9/6)	3, (10/19/07)
SOG:	1, 2x* (9/6)	3, (10/19/07)

Career Statistics

YEAR	GP/GS	SH	G	A	PTS	GWG
2007	23-22	5	0	4	4	0
2008	22-22	15	0	5	5	0
2009	8-7	3	0	0	0	0
TOTALS	53-51	23	0	9	9	0



#22 Dani Henry
D • 5-4 • R-Fr.

Bests	Season	Career
Goals:	N/A	Same
Assists:	N/A	Same
Points:	N/A	Same
Shots:	1, 3x* (9/20)	Same
SOG:	N/A	Same

Career Statistics

YEAR	GP/GS	SH	G	A	PTS	GWG
2008	REDSHIRTED					
2009	8-0	3	0	0	0	0
TOTALS	8-0	3	0	0	0	0



#23 Kacie Brewer
F • 5-5 • Sr.

Bests	Season	Career
Goals:	1, (9/20)	1, 2x* (9/20)
Assists:	1, (9/13)	1, 2x* (9/13)
Points:	2, (9/20)	2, 2x* (9/20)
Shots:	3, (9/20)	5, (9/12/07)
SOG:	3, (9/20)	3, 2x* (9/20)

Career Statistics

YEAR	GP/GS	SH	G	A	PTS	GWG
2006	5-0	1	0	0	0	0
2007	13-0	10	1	1	3	0
2008	9-0	3	0	0	0	0
2009	8-0	4	1	1	3	0
TOTALS	35-0	18	2	2	6	0



#25 Maddy Kill
M • 5-7 • Jr.

Bests	Season	Career
Goals:	N/A	1, 2x* (10/7/07)
Assists:	N/A	2, 3x* (8/30/08)
Points:	N/A	2, 4x* (8/30/08)
Shots:	1, (8/27)	4, 2x* (9/14/08)
SOG:	1, (8/27)	2, 3x* (9/14/08)

Career Statistics

YEAR	GP/GS	SH	G	A	PTS	GWG
2007 (SH)	18-5	20	2	5	9	0
2008 (SH)	18-8	17	0	3	3	0
2009	6-0	1	0	0	0	0
TOTALS	42-13	38	2	8	12	0



#26 Rae Wilson
F • 5-5 • Fr.

Bests	Season	Career
Goals:	N/A	Same
Assists:	N/A	Same
Points:	N/A	Same
Shots:	N/A	Same
SOG:	N/A	Same

Career Statistics

YEAR	GP/GS	SH	G	A	PTS	GWG
2009	4-0	0	0	0	0	0
TOTALS	4-0	0	0	0	0	0

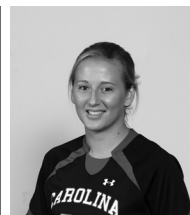


#27 Brooke Jacobs
F • 5-3 • Jr.

Bests	Season	Career
Goals:	1, (9/11)	1, 5x* (9/11)
Assists:	1, 2x* (9/20)	2, (9/23/07)
Points:	2, (9/11)	3, (11/14/08)
Shots:	5, (9/13)	Same
SOG:	2, 2x* (9/20)	3, 2x* (10/26/08)

Career Statistics

YEAR	GP/GS	SH	G	A	PTS	GWG
2007	15-4	11	1	3	5	1
2008	21-15	38	3	4	10	1
2009	8-8	15	1	2	4	0
TOTALS	44-27	64	5	9	19	2



#28 Brittany DeWitt
D • 5-6 • Fr.

Bests	Season	Career
Goals:	N/A	Same
Assists:	N/A	Same
Points:	N/A	Same
Shots:	N/A	Same
SOG:	N/A	Same

Career Statistics

YEAR	GP/GS	SH	G	A	PTS	GWG
2009	4-0	0	0	0	0	0
TOTALS	4-0	0	0	0	0	0



#29 Mollie Patton
GK • 5-7 • R-Jr.

Bests	Season	Career
Saves:	N/A	Same
Minutes:	N/A	Same

Career Statistics

YEAR	GP/GS	MIN	SVS	GA	GAA	SHO
2006	REDSHIRTED					
2007	0-0	0	0	0	0	0
2008	22-22	2053	58	22	0.96	7
2009	8-8	690	28	0	0.00	7
TOTALS	30-30	2743	86	22	0.72	14



#35 Darien Vercillo
GK • 5-6 • Fr.

Bests	Season	Career
Saves:	N/A	Same
Minutes:	N/A	Same

Career Statistics

YEAR	GP/GS	MIN	SVS	GA	GAA	SHO
2009	0-0	0	0	0	0	0
TOTALS	0-0	0	0	0	0	0



Shelley Smith Ninth Season

Shelley Smith enters her ninth season at the helm of the USC women's soccer program and looks to continue building upon the success that she has brought to the program after taking the team to the first back-to-back NCAA Tournament appearances in program history.

Smith has cemented Carolina's position as a conference title contender and player on the national stage after guiding the Gamecocks in 2008 to their second consecutive NCAA Tournament bid and third consecutive SEC Tournament bid, both program firsts. The Gamecocks went 11-7-4 overall and earned five SEC wins for the third year in a row with only one senior on the roster. Respected as a top defensive team, the Gamecocks finished the regular season second in the SEC with eight shutouts and ranked in the top two in every major defensive category including goals allowed, points allowed, shots allowed and shots on goal allowed.

Blakely Mattern and Kayla Grimsley both earned All-SEC honors with Mattern earning her second first team and Grimsley picking up spots on the second team and freshman team. The duo also picked up Soccer Buzz All-Southeast Region honors while Mattern also earned a nod by the NSCAA.

Carolina's success in the classroom continued last season as her squad earned two Academic All-District honors in Mattern and Mollie Patton. Mattern was also named to the Academic All-America first team, making South Carolina one of only four teams in the nation – and the only in the SEC – to have an Academic All-American selected each of the past four seasons. Her team was also honored with its seventh NSCAA Team Academic Award. The team had 11 players named to the SEC Academic Honor Roll in addition to nine selections to the SEC Freshman Honor Roll. Overall, Smith has coached 131 SEC Academic Honor Roll recipients since coming to USC in 2001.

Smith has coached several top student-athletes at Carolina including Ashley Kirk, USC's first four-time All-SEC honoree, Carolina's first All-American in three-time All-SEC selection Blakely Mattern and two-time All-SEC performers Melinda Carter, Jessica Julin and Sarah Lentz. Julin is currently the captain of the Finland National Team and Carter played in the WUSA. The Gamecocks have earned 20 All-SEC honors in the last eight years.

In her first season as head coach at Carolina (2001), the Gamecocks were the third most improved team in the nation with an 8-7-3 overall record. Carolina also had one of the school's best home records, going 5-3 at Stone Stadium, allowing opponents to score only four goals in eight matches.

The success continued for USC in 2002 with 13 wins in Smith's second season. The year was highlighted with USC's first ever victories against Florida and Kentucky. Smith also led her team to ties against 2002 SEC champion Auburn and Eastern Division champion Tennessee.

Smith led the Gamecocks to another successful season in 2003 with 10 wins including a USC record eight-game unbeaten streak as well as a 6-2-1 record at home in Stone Stadium.

The 2004 season featured a win over No. 7 Clemson, the Gamecocks' first win over a ranked opponent since 1998, as well as a 6-3 mark in non-conference action. Ashley Kirk also became the first freshman soccer player in school history to be named SEC Freshman of the Year. In addition, Carolina set a school record for a home game-winning streak with six consecutive wins.

Following an injury filled 2005 season, the program took a big step forward in 2006 as USC went undefeated at home for the first time in school history with an 8-0-3 mark at Stone Stadium. The team's cumulative goals against average of 0.69 was the lowest ever tallied at Carolina. The season culminated with the Gamecocks advancing to the SEC Tournament semifinals for the first time in Carolina history, as Blakely Mattern became the team's first Freshman All-America selection since 1998.

Smith directed the 2007 Gamecocks to arguably the best season in school history, tying the school record with 14 victories and advancing to the NCAA Tournament for only the second time in program history. Carolina posted a 14-6-3 overall record including a 5-4-2 mark in the SEC after beginning the season by becoming the first team ever to knock off defending national champion and top-ranked North Carolina in a season opening game at Fetzer Field in Chapel Hill. The Gamecocks ran to a 7-0-0 start to the season – program bests for start to a season and winning streak – and peaked at No. 7 in the national polls. For the second consecutive season South Carolina advanced to the SEC Tournament semifinals after knocking off Tennessee for the first time in program history and earned the school's first bid to the NCAA Tournament since 1998. Blakely Mattern became the first sophomore to ever earn SEC Defensive Player of the Year honors in addition to becoming the first All-American in South Carolina history.

In 12 years as a head coach, Smith has compiled an overall record of 122-97-24. Besides her collegiate coaching, Smith was a member of the Region III ODP staff for the past five years, as well as an assistant for the '90 Regional Team. Smith also was a member of the 2003 U-14 National Camp staff for U.S. Soccer.

With a background in both semi-professional and collegiate soccer, Smith previously served as head coach at Rhode Island from 1997-2000. The 2000 NSCAA Northeast Region Coach of the Year, Smith rebuilt the URI women's soccer program, compiling a 41-35-2 overall record. Smith took a

program that was 2-16 her first year to 12-7-1 in her second season, marking the eighth-most improved won-lost record for a team in NCAA history. In 2000, Smith coached URI to its best record ever of 15-4-1, while reaching the Atlantic 10 Semifinals, a first in URI history.

Smith was nominated for the 2000 National Coach of the Year. The New England Women's Soccer Intercollegiate Soccer Association (NEWISA) also named her its Division I Coach of the Year in 2000. She was the 1998 Atlantic 10 Coach of the Year as well.

In addition to her experience as a coach, Smith brings experience from the semi-professional level. From 1996-2000, Smith played for the Boston Renegades in the W-1 League. Smith was captain in 2000 as she led Boston to the semifinals in the W-1 Championship. The Renegades reached the finals in 1998. Smith also had the opportunity to play overseas in 1994 as a member of the Sheffield United Women's Football Club in England.

Smith, a 1993 graduate of the University of Vermont with a degree in nutritional science, received her teacher's certificate from the same institution in 1995. Smith started all four years for the Catamounts. Her primary positions were center midfielder and central defender. She was a regional All-American in both 1992 and '93 in addition to being named First Team All-North Atlantic Conference each year from 1991-93. During her freshman year, the squad won the ECAC Tournament. Vermont was one of the first programs to offer women's soccer as a varsity sport and it competed on a national level. Smith was named to Vermont's Athletic Hall of Fame in the summer of 2004.

Smith worked as an assistant coach at Dartmouth College from 1995-97. The Big Green made the NCAA Tournament in her second season with the program.

Smith is married to USC associate head coach Jamie Smith. They are the proud parents of two sons, Braden James, born on Nov. 25, 2003 and Evan Addison born on Jan. 6, 2006.

Smith has her USSF B license and the NCAA Advanced National Diploma. She is currently a member of the USYSA Regional Olympic Development Staff.

Year-By-Year Results		
Year	Record	School
1997	2-16	Rhode Island
1998	12-7-1	Rhode Island
1999	12-8	Rhode Island
2000	15-4-1	Rhode Island
2001	8-7-3	South Carolina
2002	13-6-2	South Carolina
2003	10-8-3	South Carolina
2004	8-10-2	South Carolina
2005	6-12	South Carolina
2006	11-6-5	South Carolina
2007	14-6-3	South Carolina
2008	11-7-4	South Carolina