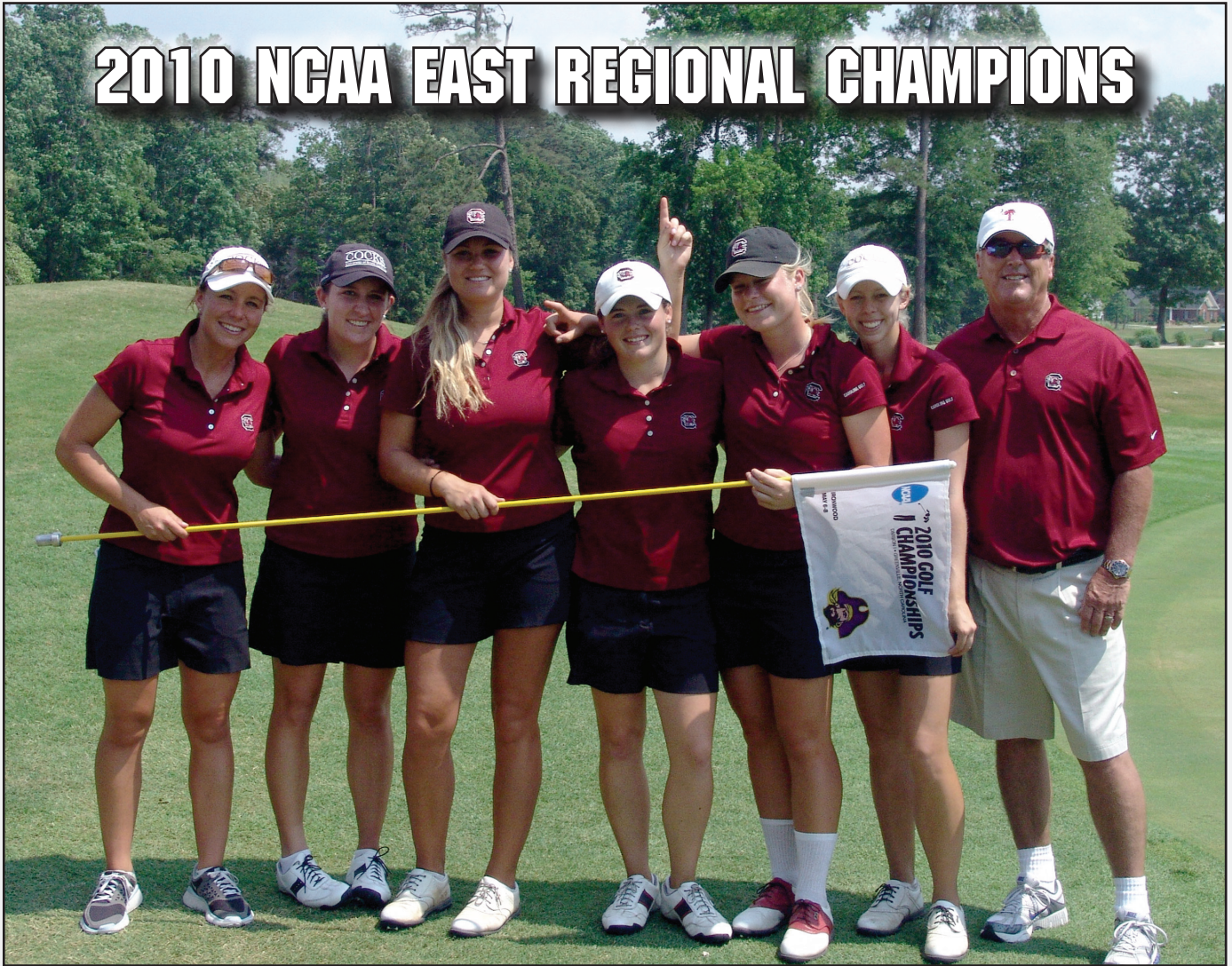


# **SOUTH CAROLINA**

## **GAMECOCKS**

**2010 NCAA EAST REGIONAL CHAMPIONS**



# **2010-2011**

## **WOMEN'S GOLF MEDIA GUIDE**



**TABLE OF CONTENTS**

<b>THE TEAM</b>		<b>2009-10 IN REVIEW</b>		2002 SEC Champions..... 25
Schedule/Quick Facts..... 2		2009-10 Results..... 13		Conference History ..... 26-27
Roster..... 3		Tournament-by-Tournament..... 14-19		Year-by-Year Results ..... 28-30
Head Coach Kalen Anderson..... 4-5		2010 NCAA Championship..... 20		All-Americans ..... 31
Director of Golf Puggy Blackmon..... 6		Statistical Breakdown..... 20		All-Conference..... 32
Student Assistant Corrine Carr..... 7		Individual Results..... 21		Academic Honors..... 33-34
Katie Burnett..... 8		2010 NCAA Regional Champions ..... 22		Team Records..... 35-36
Amanda Strang..... 9				Individual Records ..... 37-38
Meredith Swanson ..... 10				All-Time Individual Stats..... 39-43
Katie Rose Higgins, Suzie Lee..... 11				Gamecocks in the Pros..... 44
Samantha Swinehart..... 12				
		<b>HISTORY &amp; RECORDS</b>		
		NCAA Regional History..... 23		
		NCAA Championship History..... 24		

**2010-11 SCHEDULE**

<b>Dates</b>	<b>Event</b>	<b>Course/Location</b>
Sept. 12-14	Cougar Classic	Yeamans Hall Club (Hanahan, S.C.)
Oct. 8-10	Tar Heel Invitational	UNC Finley Golf Course (Chapel Hill, N.C.)
Oct. 22-24	The Landfall Tradition	Country Club of Landfall (Wilmington, N.C.)
Nov. 5-7	Pac-10/SEC Challenge	Stanford Golf Course (Stanford, Calif.)
Feb. 13-15	UCF Challenge	RedTail Golf Club (Sorrento, Fla.)
March 11-13	LSU Golf Classic	University Club (Baton Rouge, La.)
March 25-27	Bryan National Collegiate	Bryan Park Champions Course (Browns Summit, N.C.)
April 1-3	Liz Murphey Collegiate Classic	UGA Golf Course (Athens, Ga.)
April 15-17	SEC Championship	Auburn University Club (Auburn, Ala.)
May 5-7	NCAA Regional*	TBA*
May 17-20	NCAA Championship	Texas A&M Traditions Club (College Station, Texas)

\*NCAA Regional Sites and Hosts:  
 --LPGA International Golf Club, Daytona Beach, Fla. (Bethune-Cookman University)  
 --Warren Golf Club, Notre Dame, Ind. (University of Notre Dame)  
 --Washington National Golf Course, Auburn, Wash. (University of Washington)

**QUICK FACTS**

Location..... Columbia, S.C.  
 Enrollment..... 28,481  
 Founded ..... 1801  
 Team Name..... Gamecocks  
 President ..... Dr. Harris Pastides  
 Faculty Representative ..... Dr. Zach Kelehear  
 Athletics Director..... Eric Hyman  
 Deputy A.D. .... Marcy Girtton  
 Colors..... Garnet (PMS 202), Black  
 Conference ..... Southeastern  
 Home Course..... Cobblestone Park

**COACHING STAFF**

Head Coach..... Kalen Anderson  
 4th Year (Duke, 2001)  
 Director of Golf/Asst. Coach..... Puggy Blackmon

**PROGRAM HISTORY**

First Year of Women's Golf..... 1980  
 NCAA Champ. Appearances ..... 10  
 NCAA Regional Appearances..... 17  
 All-Americans..... 4  
 All-Conference..... 16  
 SEC Championships..... 1 (2002)

**TEAM INFORMATION**

2010 SEC Finish..... 7th/12  
 2010 NCAA Regional Finish..... 1st/24  
 2010 NCAA Champ. Finish..... T-14th/24  
 Letterwinners R/L..... 3/4  
 Newcomers..... 3

**MEDIA RELATIONS**

Media Relations Director ..... Steve Fink  
 Asst. SID/Golf Contact..... Wes Todd  
 E-mail..... wtodd@sc.edu  
 Office..... 803-777-7872  
 Cell..... 731-445-4705  
 Media Relations Fax ..... 803-777-2967  
 Official Website..... GamecocksOnline.com  
 Twitter..... @GamecockWGolf



# 2010-2011 SOUTH CAROLINA GAMECOCKS



***Kneeling: Student assistant coach Corrine Carr, Meredith Swanson, Katie Rose Higgins, Suzie Lee.  
Standing: Director of Golf Puggy Blackmon, Samantha Swinehart, Katie Burnett,  
Amanda Strang, Head Coach Kalen Anderson.***

## 2010-11 ROSTER

<b>Name</b>	<b>Class</b>	<b>Hometown</b>	<b>Last School</b>
Katie Burnett	Junior	Brunswick, Ga.	Brunswick HS
Katie Rose Higgins	Freshman	Charleston, S.C.	First Baptist Church School
Suzie Lee	Freshman	East Northport, N.Y.	Commack HS
Amanda Strang	Sophomore	Jonstorp, Sweden	--
Meredith Swanson	Sophomore	Roanoke, Va.	Hidden Valley HS
Samantha Swinehart	Freshman	Lancaster, Ohio	Lancaster HS

**Head Coach:** Kalen Anderson - 4th year at South Carolina (Duke, 2001)

**Director of Golf:** Puggy Blackmon - 16th year at South Carolina (Carson-Newman, 1973)

**Student Assistant Coach:** Corrine Carr (South Carolina '10)



# Kalen Anderson

Head Coach :: Duke, 2001 :: 4th year at South Carolina

Kalen Anderson enters her fourth year as the head coach of the South Carolina women's golf team on a high note - as the defending NCAA East Regional Champion.

Anderson led the Gamecocks to their first regional title in 2010 as the team posted an even-par total of 864, holding off Tennessee by two strokes to earn a second NCAA Championship

birth in three years - not a bad start for the 2001 Duke graduate in her initial head coaching position.

Anderson earned that job when South Carolina tabbed her to mentor its program in January 2008. She joined the Gamecocks after two years as an assistant at Duke, where she had an All-American career as a player, and a four-year stint as a professional on the FUTURES Tour.

And her philosophy on coaching has led to immediate success for the Carolina program.

"I am dedicated to building a championship program at the University of South Carolina," Anderson said. "The Gamecock women's golf team is committed to achieving short-game and scoring game excellence, and our much of our practice time reflects this goal. I also place a strong emphasis on building individual relationships and finding what motivates players on an individual level. I focus on individual skill development within a competitive, supportive team environment. I bring intensity to practices and training, while also creating a structure that allows players to lead a balanced life as a student-athlete."

*"I am dedicated to building a championship program at the University of South Carolina. The Gamecock women's golf team is committed to achieving short-game and scoring game excellence, and our much of our practice time reflects this goal. I also place a strong emphasis on building individual relationships and finding what motivates players on an individual level. I focus on individual skill development within a competitive, supportive team environment. I bring intensity to practices and training, while also creating a structure that allows players to lead a balanced life as a student-athlete."*

— Kalen Anderson



## The Anderson File

### Coaching Career

2008-present: Head Coach, University of South Carolina  
2006-07: Assistant Coach, Duke University

### Instructional Background

2001-present: Instructor, Private clients and various clinics

### Playing Career

2001-05: FUTURES Tour, LPGA Qualifying School  
2000: Competed in U.S. Women's Open  
1997-2001: Duke women's golf team

### Playing Accolades

NGCA Second-Team All-American (2000)  
All-Atlantic Coast Conference (1999, 2000, 2001)  
ACC Co-Rookie of the Year (1998)  
Academic All-America (1999, 2000, 2001)  
Liz Murphey Intercollegiate Individual Champion (2001)  
NCAA Team National Champion (1999)  
ACC Team Champion (2001, 2000, 1999, 1998)

### Education

Bachelor of arts in psychology, certificate in markets and management, Duke University, 2001

### Personal

**Given Name:** Kalen Marie Anderson  
**Born:** August 8, 1978 in St. Paul, Minn.  
**High School:** Edina High in Edina, Minn.



In three seasons at South Carolina, Anderson has overseen a seamless, successful transition from the previous coaching staff, highlighted by the program's first tournament title in five years at the 2010 NCAA East Regional. In addition, two players have earned All-America accolades, equaling the number of All-Americans in program history prior to her arrival.

The 2010 season was a banner year for Anderson and the Gamecocks, capped by the team's second NCAA Championship appearance in three years where they earned a tie for 14th place. This followed Katie Burnett's and the Gamecocks' triumph at the NCAA East Regional in Greenville, N.C., where Burnett earned medalist honors in leading Carolina to the regional title.

In 2009, her first full season at Carolina, the team grew together as the season progressed and earned a spot in the NCAA East Regional in Gainesville, Fla. Highlighting the year was Benedicte Toumpsin's tie for medalist honors at the LSU Golf Classic and the emergence of a freshman star in Katie Burnett.

Her first season in 2008, Anderson guided the Gamecocks into the NCAA Championship for the first time since 2003. Team leader Bénédicte Toumpsin earned third-team All-America status from *Golfweek* and an honorable mention All-America nod from the National Golf Coaches Association, becoming South Carolina's first All-American since Kristy McPherson earned the honor for the third time in her career in 2003.

Anderson joined the staff of Duke's Hall of Fame head coach Dan Brooks in the spring of 2006 and helped the Blue Devils to their second-straight national title. Duke went on to add a third title in 2007. Duke also claimed back-to-back Atlantic Coast Conference championships in her time on staff. Anderson was the designated coach during several tournaments and saw four Blue Devils earn All-America status in 2006, including three first-team selections.

"In coaching, we work on skills and techniques during practice, so when we get to tournament play, my major role is to help players keep a positive attitude and stay in the right frame of mind to let their hard work and talent shine," Anderson said. "In addition to being a resource to help players make smart decisions during competition, I like to use humor to keep them loose while also pushing them toward productivity."

Outside of tournament play, Anderson focused on short game, course management and mental coaching with her players. She helped three-time All-ACC selection Jennifer Pandolfi raise her short game from 431st in the nation in December 2005 to 84th in April 2007, while her chipping stats improved from 341st to 15th over the same period. Additionally, Anderson helped personalize fitness plans for players and actively participated in team workouts.

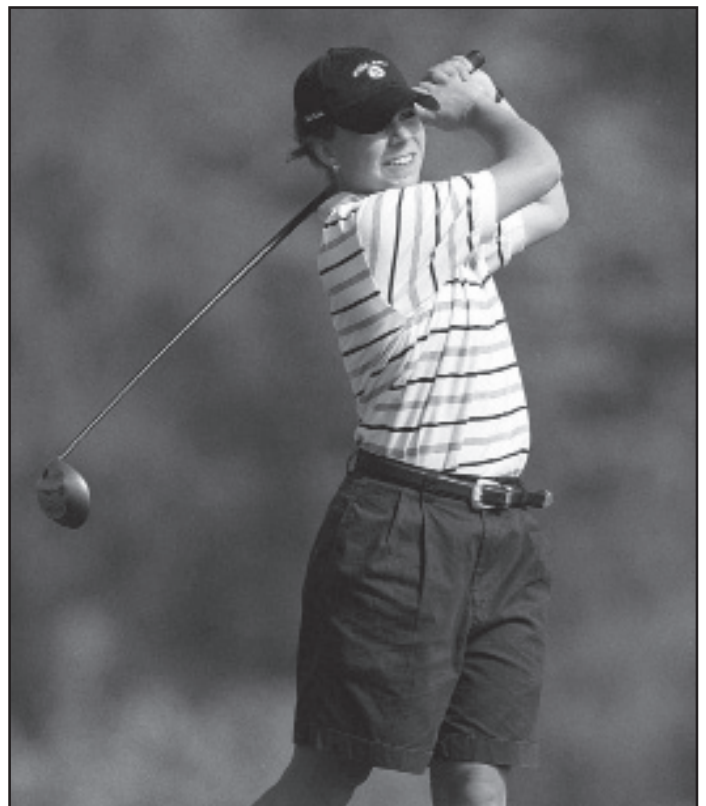
Off the course, Anderson was just as involved with shaping college players. At Duke, she assisted in arranging community service opportunities and monitored academic progress. She designed practices and skill sets, arranged team travel, ordered and managed equipment and uniforms, and assisted in fundraising projects for the Blue Devils. Anderson also worked hard as a recruiter, evaluating top-ranked prospects on the state, national and international level. Organizing and leading recruiting visits, she helped the Blue Devils land the top golfer in the class of 2008.

"I am extremely grateful to have had the opportunity to be mentored by Coach Brooks and be part of an elite program both as a player and a coach," Anderson said. "My many experiences at Duke have taught me how to keep players motivated, excited about golf and focused on attaining their goals. I will draw on that experience to help build South Carolina women's golf into a championship program."

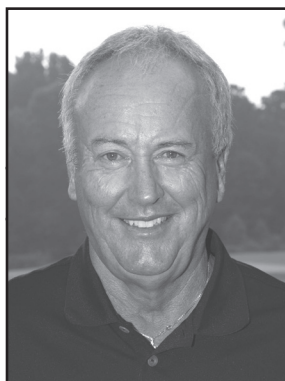
Prior to her start in coaching, Anderson played golf professionally from 2001 through 2005. She played a total of 56 events on the FUTURES Tour, recording her best finish at the 2002 Florida Hospital FUTURES Golf Classic in Sebring, Fla., where she tied for fourth. Anderson also participated in four LPGA Qualifying Schools and played in the 2000 U.S. Women's Open. While playing, she also worked to network and generate sponsorships to support her career, raising \$120,000 of capital.

Anderson kicked off her college career by earning Atlantic Coast Conference co-Rookie of the Year honors in 1998. Playing in the NCAA Championship all four years of her career, she helped the Blue Devils to their first national title in 1999, finishing 12th in the individual standings. She captured All-ACC and Academic All-America honors that year, a feat she would repeat over the remaining two years of her career. With the nation's top-rated total short game in 2000, Anderson picked up second-team All-America status. Finishing ninth in the NCAA Regional in 2000, she was the Blue Devils' top finisher at the NCAA Championship, claiming 21st place. In all, Anderson collected 16 top-10 finishes in her career, including the individual title in the 2001 Liz Murphey Intercollegiate.

A native of Edina, Minn., Anderson earned her bachelor's degree in psychology with a certificate in markets and management from Duke in 2001. She is engaged to Deuce Harris of Durham, N.C., a former wrestler at Duke University.



***As a player at Duke, Anderson was a three-time All-ACC selection. She earned second-team All-America status in 2000 and was part of Duke's first national championship team in 1999.***



# Puggy Blackmon

Director of Golf :: Carson-Newman, 1973 :: 16th year at South Carolina

After 12 seasons at the helm of the South Carolina men's golf program, Puggy Blackmon was named director of golf in July 2007. Blackmon, who was inducted to the Golf Coaches' Association of America Hall of Fame in 2005 and the Georgia Tech Hall of Fame in 2008, is now the unifying presence for Carolina golf, sharing his wealth of knowledge with both the men's and women's teams. His experience building both successful teams and players will help both teams continue to improve and compete at a national level. Since the 2008-09 season, Blackmon has spent the bulk of his time as an assistant coach for the women's team, implementing a short-game program that led the Gamecocks to their first NCAA Regional title in 2010.

As a head coach at South Carolina and Georgia Tech, Blackmon steered his teams to 23 straight trips to NCAA postseason, including all 12 seasons he coached the Gamecocks. At South Carolina, eight of his 12 NCAA Regional berths resulted in NCAA Championship appearances. South Carolina golf won nine team tournament titles in Blackmon's tenure, including the 2007 NCAA West Regional. The Gamecocks have spent a considerable amount of time in the national polls, including a No. 3 national ranking in 1999 and fourth in 2000.

Under Blackmon's tutelage, Gamecocks captured 11 individual titles, including five from All-American Kyle Thompson. Six golfers earned 10 All-America honors, and 11 Gamecocks were named to 17 All-Southeastern Conference first or second teams. Blackmon also coached two SEC Freshmen of the Year (Mark Anderson, 2005 and Eric Ecker, 1998) and an SEC Scholar-Athlete of the Year (West Streib, 2005).

In Blackmon's final season at the helm of the men's program, the team celebrated with a victory at the 2007 NCAA West Regional, during which the team's total of 820 shattered the school record for a 54-hole tournament by 25 strokes. In arguably the most important event of the season, Blackmon's golfers posted just two scores over par among the 15 rounds played. George Bryan IV led the way en route to PING All-Southeast Region and honorable mention All-America honors at season's end.

Blackmon's players excelled academically as well. The men's golf team posted the highest team grade point average of any of the school's men's programs for three consecutive semesters in the spring of 2005, fall of 2005 and spring of 2006. Former Gamecock Lars Cederqvist was named a 2000 CoSIDA Academic All-American as a senior after maintaining a 4.0 in mechanical engineering throughout his collegiate career. Eight different golfers have earned 10 GCAA All-America Scholar honors while 40 players have been named to the SEC Academic Honor Roll.

In addition to serving as director of golf at South Carolina, Blackmon serves as swing coach for PGA Tour players David Duval and Kyle Thompson.

Before coming to Carolina on June 5, 1995, Blackmon coached Georgia Tech to five Atlantic Coast Conference Championships, 11-consecutive NCAA Championship appearances and 34 team tournament titles.

During his 12-year tenure at Georgia Tech, Blackmon built the Yellow Jacket program into one of the most successful and dominant in college golf. At that time, only six other college golf programs had matched his program's 11 straight trips to the NCAA Tournament. Blackmon's Tech squad finished runner-up at the 1993 NCAA Championship, and he led the Ramblin' Wreck to five top-seven national finishes. His Georgia Tech teams either won or finished second in the ACC Championship nine times.

A four-time ACC Coach of the Year (1984, 1985, 1992, 1993), three of Blackmon's former golfers finished second at the NCAA Championships, and his players at South Carolina and Georgia Tech combined for 31 individual tournament crowns. Blackmon coached 31 All-Americans at Tech and Carolina and two national players of the year in the 1990s at Tech. Duval, a four-time All-American, was the 1993 National Player of the Year, while Stewart Cink, the 2009 British Open Champion, was named the 1995 National Player of the Year.

Blackmon has coached 30 All-SEC or All-ACC performers in his tenure, while five of those individuals -- Bob McDonnell (1985), David Duval (1991, 1993), Mikko Rantanen (1994) and Eric Ecker (1998) -- were conference medalists. The Yellow Jackets won the ACC team title in 1985, 1991, 1992, 1993 and 1994, while Carolina was runner up by one stroke at the 1998 SEC Championship -- USC's best finish ever. In addition, Blackmon coached his teams to 43 tournament titles and finished his coaching career with a streak of 23 straight postseason appearances at Carolina and Georgia Tech.

Blackmon has also proven to be an effective fundraiser, which is a role he has expanded as director of golf. At Carolina, Blackmon has orchestrated and raised funds for the Wardle Golf House, South Carolina's state-of-the-art teaching facility, and a complete renovation of the on-campus short-game facility. His creation of "Cock N' Fire" and "Head Ball Coach" wines have raised over \$250,000 for the purchase of a conversion van and two mini-vans for the team's travel. Blackmon also spearheaded the efforts that raised \$1.2 million for endowment of his team's scholarships at Georgia Tech.

Born William Dempsey Blackmon III on Dec. 9, 1950, in Beaufort, S.C., he is a 1969 graduate of Ridgeland High School. Blackmon played collegiately at Carson-Newman College, where he received his bachelor of arts in business administration in 1973. He was chosen one of the Outstanding College Athletes of America in 1971 and 1973. After receiving his master of science in economics from Clemson in 1977, Blackmon worked for six years in the golf resort operations and development field in Florida.

Blackmon and his wife, Gail, also a Ridgeland native, have three children: a daughter, Ashley, and two sons, Jordan and Tate. Ashley, a South Carolina and Medical School at South Carolina graduate, is a physician in Columbia and is married to Jared Jones; the couple has a daughter, Bailey Gail. Jordan is a USC graduate and pursuing a film career in California, and Tate is a current student at Midlands Tech.



Puggy Blackmon and Benedicte Toumpsin at the 2009 SEC Championship at Cobblestone Park.



# Corrine Carr

Student Assistant Coach

Corrine Carr will serve as a student assistant coach for the 2010-11 season as she completes her coursework at the University of South Carolina. Carr played for the Gamecocks from 2008-10 as a junior and senior, helping the team to two NCAA Regional berths and an appearance in the 2010 NCAA Championship.

Carr finished her two-year Carolina career with a 76.39 scoring average through 58 tournament rounds for the Gamecocks, ranking her sixth all-time in program history with a minimum of 55 rounds. In her senior season of 2010, she played in every event and posted a 74.85 stroke average, good enough for the 10th-best single season in Carolina history.

She transferred to South Carolina after two years at Furman University, where she played in 20 events, including the 2008 NCAA Championship. Her best finishes as a Paladin came in back-to-back tournaments as she finished 10th at both the 2008 Southern Conference Championship and the 2008 NCAA East Regional.

Since completing her eligibility with the Gamecocks, Carr has remained competitive on the amateur circuit, winning the 2010 Carolinas Women's Amateur Championship at Furman University Golf Club in late May. She also qualified for and competed in the 2010 U.S. Women's Amateur, where she advanced to the match play round.

Carr is a native of Pinehurst, N.C., and graduated from The O'Neal School. She is a business major and is scheduled to graduate from South Carolina in the fall of 2010.





# Katie Burnett

Junior :: Brunswick, Ga. :: Brunswick



**\*\*NCAA East Regional Medalist\*\***  
**\*\*2010 Second Team All-SEC\*\***  
**\*\*2010 All-American\*\***  
**Golfweek National Ranking: 46**  
**Golfstat Ranking: 52**

**Career Bests**

18-hole Score:	67
54-hole Score:	210
Tournament Finish:	1st
Top 10 Finishes:	5
Top 20 Finishes:	14

**2009-10**

NGCA Honorable Mention All-American...*Golfweek* Honorable Mention All-American... Second Team All-SEC...Voted as the team's MVP... Was Gamecocks' top finisher at NCAA Championship, shooting 72-74-69-71=286 (-2) to tie for ninth place; second-best NCAA finish in school history...Score of 286 was best 72-hole score in school history...Captured her first collegiate title at the NCAA East Regional, shooting 67-72-71=210 (-6) to earn medalist honors by one shot over Auburn's Carlie Yadloczky...Led team to program's first NCAA Regional championship...Her 67 in first round of NCAA Regional tied for second-best score in school history...Has posted eight top-20 finishes in 10 full-field events... Was the team's top finisher in eight tournaments...Has turned in nine rounds at par or better...Prior to NCAA Regional, best finish came at season-opening NGCA Match Play Qualifying, where she tied for third with 69-75=144 (E)... Finished 15th at SEC Championship, leading the Gamecocks to a seventh-place finish... Career scoring average of 74.56 currently ranks second in school history... Carries a 73.86 scoring average for the 2009-10 season, which would rank fourth all-time in SC history...Named to SEC Academic Honor Roll.

**2008-09**

Played in all 10 tournaments as a freshman, recording the second-best stroke average on the team (75.27)...ranks as the best scoring average for a freshman in Gamecock women's golf history and ninth all-time among all players...made a big splash in her collegiate debut with an eighth-place finish at the Cougar Classic, shooting a pair of 70s in the first two rounds...her score of 213 (-1) was the best-ever 54-hole score by a Carolina freshman and the seventh-best overall tournament total in Gamecock history... had three more top-20 finishes on the season, including a 17th-place showing at the Lady Tar Heel Invitational, 16th at the LSU Classic (final-round 70) and a tie for 20th at the Bryan National Collegiate...was the low Carolina finisher in three tournaments... advanced to the second round of match play at the U.S. Women's Amateur Public Links Championship, her first competition in a USGA championship event...Named to SEC Freshman Academic Honor Roll and an NGCA All-American Scholar.

**Prior to South Carolina**

Earned four golf letters for coach Bonita Tanner's Pirates, earning team MVP honors all four years...holds school records for lowest nine-hole and 18-hole scores...captured the 2008 Georgia 4A state tournament individual title... won four events in 2008 – the Hurricane Junior Golf Tour Southeast Georgia Open, the David A. Wall Invitational, the Lady Bear Invitational and the University of Florida Junior Championship...was a 2007 Wendy's Heisman Nominee...named 2006 Georgia PGA Player of the Year, winning the organization's Stroke Average Award that year as well...posted three tournament victories in 2007, winning the Georgia Peach, the Doublegate Junior Classic SJGT and the David A Wall, and was top three at two other AJGA events... helped team to back-to-back third-place finishes in the region tournament (2006, 2007)... also played softball and basketball at Brunswick...holds school records for lowest ERA and highest batting average and pitched in the team's regional championship game in 2005.

**Personal**

Katelyn M. Burnett was born on Oct. 16, 1989, in Brunswick, Ga...parents are Rod and Lisa Burnett...has an older brother, Ben...major is sport and entertainment management.

**Career Results**

**2009-10**

NGCA Match Play Qualifying	69-75-144	T-3rd
NGCA Match Play	vs. B. Altomare (UVA)	Halved
NGCA Match Play	vs. C. Lennarth (UA)	L, 2 & 1
NGCA Match Play	vs. K. Stewart (UTC)	W, 1 up
Mason Rudolph Women's Championship	69-73=142	T-20th
Lady Tar Heel Invitational	76-75-77=228	T-61st
Mercedes-Benz Collegiate	75-73-75=223	T-15th
Central District Invitational	77-80-77=234	T-60th
Kinderlou Challenge	75-74-76=225	T-16th
Liz Murphey Collegiate	82-75-72=229	T-20th
Bryan National Collegiate	70-76-76=222	T-20th
SEC Championship	72-70-72=214	15th
ECU/Duke Tri-Match	72-73=145	T-4th
NCAA East Regional	67-72-71=210	1st
NCAA Championship	72-74-69-71=286	T-9th

**2008-09**

Cougar Classic	70-70-73=213	8th
Lady Tar Heel Invitational	76-72-76=224	T-17th
Mercedes-Benz Collegiate	75-81-82=238	T-83rd
The Derby Invitational	80-73-80=233	T-40th
Central District Invitational	74-83-76=233	T-44th
LSU Golf Classic	73-74-70=217	T-16th
Betsy Rawls Longhorn Inv.	74-78-73=225	T-23rd
Bryan National Collegiate	75-77-75=227	T-20th
SEC Championship	74-78-74=226	T-32nd
NCAA East Regional	75-72-75=222	T-34th

**Burnett's Career Totals**

Season	Tourn.	Rds.	Strokes	Avg.	Low 18	Best Finish
2008-09	10	30	2,258	75.27	70	8th
2009-10	12	34	2,502	73.58	67	1st
<b>Career</b>	<b>22</b>	<b>64</b>	<b>4,760</b>	<b>74.37</b>	<b>67</b>	<b>1st</b>





# Amanda Sträng

Sophomore :: Jonstorp, Sweden

## 2009-10

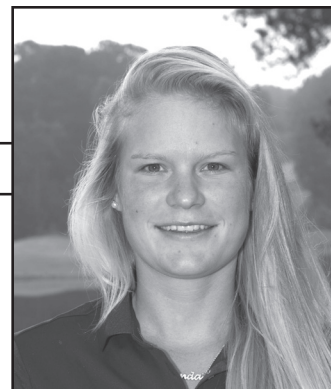
Named to All-SEC Freshman Team...Season scoring average of 75.73 was the third-best freshman season in school history, behind teammates Katie Burnett (75.27 in 2009) and Benedicte Toumpsin (75.61 in 2007)...Played in every tournament as a freshman... Tied teammate Katie Burnett for the top finish in the season-opening NGCA Match Play Qualifier, tying for third place after shooting 72-72=144 (E)...Best round came in the opening round of the NCAA East Regional as she shot 70 (-2) to help the team to a first-day 283 (-5), eventually claiming the team title...Posted four rounds of par or better during the season...Tied for 28th at SEC Championship, shooting 74-74-72=220 (+7) in her first conference championship as a Gamecock... Named to SEC Freshman Academic Honor Roll.

## Prior to South Carolina

Attended ProCivitas private gymnasium from 2006-09...Ranked fifth among Skandia Tour Elite girls in 2009, second among all 19-year-olds...Played in six STE tournaments, winning two events...Played in a Ladies' European Tour event in 2008...Was ranked at the top of her age division as a 13-year-old and again at age 16...Won a Junior Masters Invitation tournament...Finished third on the Skandia Tour Elite in 2006...Finished fifth in Spanish Open Ladies Amateur Championship in 2009...Helped her team to the gold medal at the European Girls Team Championship in 2008 and fifth place in 2009...Helped her team to gold and silver at the South of Sweden competition for juniors...Won gold at the Nordic Championships and silver at the Junior Swedish Masters.

## Personal

Full name is Amanda Ellen Ingvarsdotter Sträng...Born Feb. 17, 1990 in Jonstorp, Sweden...Parents are Ingvar and Peggy Sträng...Father was a goalkeeper in the highest ice hockey league in Sweden...Chose South Carolina because she felt like part of the team after only two days in Columbia and because of the campus and golf facilities...Has not declared a major.



## Career Bests

18-hole Score:	70
54-hole Score:	220
Tournament Finish:	3rd
Top 10 Finishes:	1
Top 20 Finishes:	1

## Career Results

### 2009-10

NGCA Match Play Qualifying .....	72-72=144.....	T3
NGCA Match Play .....	vs. W. Neuhauser (UVA).....	L, 1 up
NGCA Match Play .....	vs. J. Kirby (UA).....	L, 4 & 3
NGCA Match Play .....	vs. C. Wolf (UTC).....	W, 3 & 2
Mason Rudolph.....	74-74=148.....	T61
Lady Tar Heel .....	74-73-80=227.....	T53
Mercedes-Benz .....	79-72-76=227.....	T29
Central District.....		
84-75-76=234.....		T64
Kinderlou Challenge.....	76-82-77=235.....	T53
Liz Murphey Collegiate.....	80-82-77=239.....	T69
Bryan National Collegiate.....	79-73-73=225.....	T35
SEC Championship.....	74-74-72=220.....	T28
ECU/Duke Tri-Match .....	76-72=148.....	T6
NCAA East Regional.....	70-79-73=222.....	T39
NCAA Championship.....	75-73-81-77=306.....	T-99th

## Strang's Career Totals

Season	Tourn.	Rds.	Strokes	Avg.	Low 18	Best Finish
2009-10	12	34	2,575	75.73	70	T-3rd



# Meredith Swanson

Sophomore :: Roanoke, Va. :: Hidden Valley



**2009-10**

Competed in all four tournaments in the fall and one in the spring...Best finish was a tie for 46th in the season-opening NGCA Match Play Qualifier... Won her first match against Virginia's Nicole Agnello, 5 and 3...Best round was a 73 in the first round of the Lady Tar Heel Invitational; she tied for 53rd...Advanced to semifinals of Virginia State Women's Amateur...Named to SEC Freshman Academic Honor Roll.

**Prior to South Carolina**

Graduated from Hidden Valley High School in 2009, where she lettered all four years...Was the only player in school history to qualify for the VHSL Boys' State Championship (2007, 2008)...Four-time all-district and all-region selection...Two-time first-team all-state...Team captain in 2007 and 2008...All honors in the boys' division as school did not sponsor a girls' team...Three-time winner of Roanoke Valley Hall of Fame Women's Championship; youngest winner ever at age 13...Holds women's course record at Roanoke Country Club with a 66 at the age of 15...Was No. 2-ranked junior golfer in Virginia...Won the AJGA Stars of Texas Junior in 2008; set AJGA record in winning by 14 strokes...Earned sponsor's exemption into LPGA Michelob Ultra Classic in Williamsburg, Va., in spring of 2009...Ranked 93rd overall junior by Golfweek...Named one of Golfweek's "Top 25 Upcoming College Freshmen" for the 2009-10 recruiting class.

**Personal**

Full name is Meredith J. Swanson...Born January 17, 1991...Parents are Stuart and Leslie Swanson...Plans to major in business/finance.

**Career Bests**

18-hole Score:	73
54-hole Score:	227
Tournament Finish:	T-46th
Top 10 Finishes:	0
Top 20 Finishes:	0

**Career Results**

**2009-10**

NGCA Match Play Qualifying .....	80-74=154.....	T-46th
NGCA Match Play .....	N. Angello (UVA).....	W, 5 & 3
NGCA Match Play .....	B. Pancake (ALA).....	L, 4 & 3
Mason Rudolph Women's Championship .....	78-77=155.....	84th
Lady Tar Heel Invitational .....	73-75-79=227.....	T-53rd
Mercedes-Benz Collegiate.....	78-79-77=234.....	T-66th
ECU/Duke Tri-Match .....	95-77=172.....	16th

**Swanson's Career Totals**

Season	Tourn.	Rds.	Strokes	Avg.	Low 18	Best Finish
2009-10	5	12	942	78.50	73	T-46th



# Katie Rose Higgins

Freshman :: Charleston, S.C. :: First Baptist Church School

## Prior to South Carolina

Was the 2009 South Carolina Junior Champion...Competed for the First Baptist Church School's boys' golf team...Was named team MVP, SCISA all-region and the region player of the year...Won the Jimmy Self Invitational championship, breaking the tournament record by seven strokes...Upstate Junior Champion...Beth Daniel Junior Azalea Champion... Was a member of the victorious South Carolina team that defeated Georgia in the Georgia/South Carolina Junior Challenge Match...played basketball and volleyball for the Hurricanes...Was named the MVP of the volleyball team as a freshman and a sophomore...Helped the basketball team to the regional championship...Was the student body president...Member of National Honor Society.

## Personal

Born Jan. 3, 1992, in Bethlehem, Pa...Parents are Kevin and Kay Higgins...Father is head football coach at The Citadel...Has a brother, Tim, and a sister, Meaghan... Her brother, Tim, played football at the University of Florida...Plans to major in business... Career goal is to play on the LPGA Tour...Chose South Carolina because she was impressed with Coach Anderson and wanted to play golf at the highest level possible while still staying fairly close to home.



# Suzie Lee

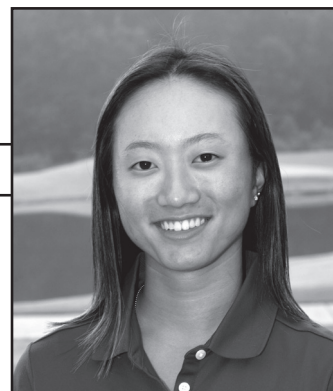
Freshman :: East Northport, N.Y. :: Commack

## Prior to South Carolina

Ranked No. 21 girls' golfer in the class of 2010, according to Golfweek...Competed for Commack High School, where she was the team MVP for three years... Named all-state and all-county all four years... Was New York girls' state champion in 2008...Helped her team to the state title in 2008 and 2009...Won two AJGA events in 2009 in Kingsmill, Va., and Nemaocolin Resort, Pa...Was a 2009 AJGA Rolex All-American...2009 Future Collegians World Tour First-Team All-American...Had five top-5 finishes, including a third-place showing at Furman University...Won four times on the FCWT and three more on the IJGT...Advanced to the round of 16 in match play at the 2009 U.S. Girls Junior Amateur Championship and tied for 17th place in 2007.

## Personal

Born June 28, 1992, in Seoul, South Korea...Moved to the United States when she was three months old...Parents are Sejeah and Jean Lee...Has not declared a major...Chose South Carolina because she felt it was the best place to accomplish her golf goals while obtaining a quality education, and the golf course, facilities and weather were also major factors.





# Samantha Swinehart

Freshman :: Lancaster, Ohio :: Lancaster

## Prior to South Carolina

Ranked No. 32 girls' golfer in the class of 2010, according to Golfweek... Competed for Lancaster High School for four years... 2008 Division I OHSAA State Champion... Was named All-Ohio three times... Also named Academic All-Ohio... Won 2008 Hudson Invitational... Had six top-10 finishes in AJGA tournaments... Two runner-up finishes in 2009 on PGA Junior Series... Advanced to match play at U.S. Girls Junior Amateur in 2008... Honor roll students... Member of National Honor Society... Had a hole-in-one in seventh grade... Also played softball.

## Personal

Born October 9, 1991, in Marietta, Ga.... Parents are Steve and Terri Swinehart... Her father, Steve, is a 1980 South Carolina graduate and was a reserve quarterback for the Gamecock football team from 1976-79... Her brother, Dane, plays baseball at Belmont University... Has not declared a major... Chose South Carolina because of the coaching staff, team and facilities, and because it is a place she feels she can succeed academically and grow athletically.





**2009-10 TEAM RESULTS**

Date	Tournament	Team Score	Finish	Low Individual	Score	Low Individual Finish
Sept. 6-8	NGCA Match Play Qualifying	292-294=586 (+10)	2nd/16	A. Strang/K. Burnett	72-72=144/69-75=144 (E)	T-3rd/80
	--vs. Virginia	L, 2-1 (2 halves)		--	--	--
	--vs. Alabama	L, 3-1 (1 halve)		--	--	--
	--vs. Chattanooga	W, 3-2	7th/16	--	--	--
Sept. 25-27	Mason Rudolph Championship	300-296=596 (+20)	17th/17	Katie Burnett	69-73=142 (-2)	T-20th/90
Oct. 9-11	Lady Tar Heel Invitational	295-296-302=893 (+29)	13th/18	Benedicte Toumpsin	72-74-75=221 (+5)	T-21st/90
Oct. 16-18	Mercedes-Benz Collegiate	302-290-297=889 (+25)	3rd/18	Corrine Carr	73-73-71=217 (+1)	5th/96
Feb. 22-23	Central District Invitational	301-309-305=915 (+51)	11th/15	Corrine Carr	72-80-75=227 (+11)	T-31st/75
Mar. 1-2	Kinderlou Forest Challenge	304-308-307=919 (+43)	11th/18	Katie Burnett	75-74-76=225 (+6)	T-16th/90
Mar. 26-28	Liz Murphey Collegiate Classic	324-309-299=932 (+68)	T-11th/23	Katie Burnett	82-75-72=229 (+13)	T-20th/120
Apr. 2-4	Bryan National Collegiate	294-302-297=893 (+29)	9th/18	K. Burnett/B. Toumpsin	222 (+6)	T-20th/90
Apr. 16-18	SEC Championship	289-290-288=867 (+15)	7th/12	Katie Burnett	72-70-72=214 (+1)	15th/60
Apr. 24	ECU/Duke Tri-Match	295-293=588 (+12)	2nd/3	K. Burnett/C. Carr	145 (+1)	T-4th/17
May 6-8	NCAA Regional	283-291-290=864 (E)	1st/24	Katie Burnett	67-72-71=210 (-6)	1st/123
May 18-21	NCAA Championship	300-297-293-296=1186 (+34)	T-14th/24	Katie Burnett	72-74-69-71=286 (-2)	T-9th/126

**2009-10 INDIVIDUAL STATISTICS**

Player	Total Tournaments	Total Rounds	Total Strokes	Stroke Average	Best 1st Rd.	Best 2nd Rd.	Best Final Rd.	Best 18	Best 54	Top 5	Top 10	Top 20	Best Finish
Katie Burnett	12	34	2,502	73.59	67	70	71	67	210	2	3	9	1
Corrine Carr	12	34	2,545	74.85	71	71	67	67	217	1	2	3	5
Benedicte Toumpsin	10	30	2,249	74.96	68	72	72	68	217	0	0	4	15
Amanda Strang	12	34	2,575	75.73	70	72	72	70	220	1	1	1	3
Taylor Barrett	8	24	1,854	77.25	75	74	76	74	227	0	0	0	44
Meredith Swanson	5	12	942	78.50	73	74	77	73	227	0	0	0	46
Taylor Weaver	1	2	161	80.50	81	--	80	80	--	0	0	0	88
<b>TEAM</b>	<b>12</b>	<b>34</b>	<b>10,128</b>	<b>297.88</b>	<b>283</b>	<b>290</b>	<b>288</b>	<b>283</b>	<b>864</b>	<b>4</b>	<b>7</b>	<b>13</b>	<b>1</b>



*The 2009-10 Gamecocks put together one of the best seasons in school history, including an NCAA Regional title and a top-15 finish at the NCAA Championships. Standing: Assistant coach Michael Burcin, Meredith Swanson, Taylor Barrett, Amanda Strang, Corrine Carr, Head Coach Kalen Anderson. Kneeling: Taylor Weaver, Cayci Ruppe, Benedicte Toumpsin, Katie Burnett.*



**NGCA Match Play Qualifying**  
LPGA International Legends Course  
Sept. 6, 2009 • Daytona Beach, Fla.  
Par 72 • 6,280 Yards  
**2nd of 16**

**TEAM SCORES**

1.	Florida	293-292=585	+9
2.	<b>South Carolina</b>	<b>292-294=586</b>	<b>+10</b>
T3.	Auburn	294-296=590	+14
T3.	LSU	299-291=590	+14
5.	Georgia	295-297=592	+16
6.	Alabama	302-298=600	+24
7.	Virginia	304-297=601	+25
8.	Chattanooga	302-300=602	+26
9.	Kent State	303-300=603	+27
10.	Duke	303-303=606	+30
T11.	North Carolina	305-302=607	+31
T11.	TCU	304-303=607	+31
13.	Georgia State	315-295=610	+34
14.	Mississippi	300-323=623	+47
15.	Colorado	315-309=624	+48
16.	UCF	325-310=635	+59

**INDIVIDUAL MEDALIST**

Cydney Clanton, Auburn	73-69=142	-2
------------------------	-----------	----

**GAMECOCKS**

T3.	Amanda Strang	72-72=144	E
T3.	Katie Burnett	69-75=144	E
T8.	Corrine Carr	72-73=145	+1
T46.	Benedicte Toumpsin	79-75=154	+10
T46.	Meredith Swanson	80-74=154	+10

**DAYTONA BEACH, Fla.** — South Carolina got strong play across the board and finished one stroke behind Florida to take second place in 36 holes of stroke-play qualifying at the NGCA Match Play Championship. Katie Burnett and Amanda Strang tied for third in the stroke-play portion of the event. Burnett fired rounds of 69 and 75 to total an even-par day of 144. Strang, playing in her first collegiate event, went 72-72=144 to tie her Gamecock teammate. Not far behind was senior Corrine Carr, who tied for eighth place with rounds of 72-73=145, one stroke behind Burnett and Strang. Swanson and Toumpsin turned in rounds of 154 to tie for 46th place.

As a team, the Gamecocks shot 292-294=586 to finish one stroke behind Florida and four shots clear of defending SEC champion Auburn to earn the No. 2 seed in the match play portion of the event.

**NGCA Match Play**  
LPGA International Legends Course  
Sept. 7-8, 2009 • Daytona Beach, Fla.  
Par 72 • 6,280 Yards  
**Won 1, Lost 2**

**(7) VIRGINIA 2, (2) SOUTH CAROLINA 1**  
**(Two matches halved)**

**K. Burnett (SC)** vs. B. Altomare (UVA), halved  
W. Neuhauser (UVA) def. **A. Strang (SC)**, 1 up  
**M. Swanson (SC)** def. N. Agnello (UVA), 5 and 3  
C. Nielson (UVA) def. **C. Carr (SC)**, 2 and 1  
**T. Barrett (SC)** vs. E. Collins (UVA), halved

**(6) ALABAMA 3, (2) SOUTH CAROLINA 1**  
**(One match halved)**

C. Lennarth (ALA) def. **K. Burnett (SC)**, 2 and 1  
J. Kirby (ALA) def. **A. Strang (SC)**, 4 and 3  
B. Pancake (ALA) def. **M. Swanson (SC)**, 4 and 3  
**C. Carr (SC)** def. C. Harter (ALA), 7 and 6  
**B. Toumpsin (SC)** vs. R. Nair (ALA), halved

**(2) SOUTH CAROLINA 3, (8) CHATTANOOGA 2**

E. de Groot (UTC) def. **C. Carr (SC)**, 1 up  
**K. Burnett (SC)** def. K. Stewart (UTC), 1 up  
**A. Strang (SC)** def. C. Wolf (UTC), 3 and 2  
M. Salinas (UTC) def. **T. Barrett (SC)**, 2 up  
**B. Toumpsin (SC)** def. M. Loza (UTC), 3 and 1

**DAYTONA BEACH, Fla.** — South Carolina was able to salvage a victory at the Hooters/NGCA Collegiate Match Play Championship, defeating Chattanooga 3-2 to take home seventh place. With the team match tied at two apiece, the outcome came down to the final hole of Katie Burnett's match with Chattanooga's Kayla Stewart. Burnett, who had trailed nearly the whole way, squared the match on their 16th hole with a par on the tricky par-4 sixth. Both would par No. 7 (their 17th) and the match came to the final hole all square. Burnett would record a par on the par-5 eighth while Stewart made bogey, and Burnett won the hole and the match, 1-up. It wrapped a 1-1-1 weekend for Burnett as she began her sophomore campaign.

South Carolina's first two wins came relatively easily as Amanda Strang took down Christine Wolf, 3 and 2. Benedicte Toumpsin wrapped up a 1-0-1 weekend with a win in her match, 3 and 1, over Maria Juliana Loza. Like Strang, Toumpsin led from wire-to-wire, taking as much as a four-hole lead at various points in the match.

Taylor Barrett led most of the way in her match and came to the 17th hole all square with Maria Salinas. But Barrett would make bogey on the final two holes against Salinas' pars to give Salinas a 2-up victory. Corrine Carr would stage a valiant comeback after trailing nearly the whole match, nearly overcoming Emma de Groot after she was dormie with three to play. But the two would halve the final hole, giving de Groot the win, 1-up.

For the weekend, South Carolina finished 1-2 in the competition, defeating Chattanooga but falling to Virginia and Alabama. The Southeastern Conference fared very well in the event with six of the eight teams in the championship bracket being members of the SEC.



### Mason Rudolph Women's Championship

Vanderbilt Legends Club (North Course)

Sept. 25-27, 2009 • Franklin, Tenn.

Par 72 • 6,271 Yards

17th of 17

#### TEAM SCORES

1.	Southern Cal	278-282=560	-16
2.	UCLA	284-278=562	-14
3.	Auburn	278-285=563	-13
T4.	Arizona State	280-285=565	-11
T4.	Duke	283-282=565	-11
6.	LSU	286-283=569	-7
7.	Alabama	280-290=570	-6
8.	Oklahoma State	285-286=571	-5
9.	Georgia	285-288=573	-3
10.	Arizona	286-290=576	E
11.	Vanderbilt	285-293=578	+2
12.	Virginia	292-287=579	+3
13.	Stanford	287-293=580	+4
14.	Florida	292-289=581	+5
15.	Texas	290-294=584	+8
16.	Tulane	296-289=585	+9
17.	<b>South Carolina</b>	<b>300-296=596</b>	<b>+20</b>

#### INDIVIDUAL MEDALIST

Jennifer Song, Southern Cal 66-66=132 -12

#### GAMECOCKS

T20.	Katie Burnett	69-73=142	-2
T61.	Amanda Strang	74-74=148	+4
T76.	Corrine Carr	79-72=151	+7
84.	Meredith Swanson	78-77=155	+10
88.	Taylor Weaver	81-80=161	+17

**FRANKLIN, Tenn.** — South Carolina sophomore Katie Burnett put together a 36-hole total of 142 (-2) to earn her second top-20 finish in as many events and lead the Gamecocks at the Mason Rudolph Women's Championship. With a team score of 296, South Carolina was four strokes better on Sunday than in Friday's first round and finished at 596 (+20) in 17th place at the rain-shortened event at the Vanderbilt Legends Club North Course.

Burnett, who was tied for eighth after Friday's first round, shot a 1-over 73 on Sunday to finish tied for 20th place at 2-under par. Burnett had four birdies, three bogeys and one double-bogey on the day as she led South Carolina for the week.

Senior Corrine Carr had Carolina's best round of the day, shooting an even-par 72 to finish at 7-over-par for the week and tied for 76th place. Carr had only a bogey to blemish her opening-nine scorecard as she made the turn at 1-over, then had three birdies and two bogeys on her back nine to finish at even par for the day.

Freshman Amanda Strang was consistent with a pair of 74s on the week to finish at 148 (+4), tied for 61st. Freshman Meredith Swanson and sophomore Taylor Weaver both improved by one shot on Sunday as Swanson shot 77 to finish 84th and Weaver shot 80, finishing 88th.

Southern California took the team title with a 560 (-16), and UCLA was two strokes behind at 14-under. Auburn finished one stroke back of the Bruins at 13-under par.

The Trojans' Jennifer Song ran away with individual medalist honors, shooting 66-66-132 (-12) to win by three shots over Vanderbilt's Marina Alex, Auburn's Cydney Clanton and UCLA's Sydnee Michaels.

The teams played 18 holes on Sunday to make the tournament a 36-hole event after heavy rains forced the cancellation of Saturday's second round.

### Tar Heel Invitational

UNC Finley Golf Course

Oct. 9-11, 2009 • Chapel Hill, N.C.

Par 72 • 6,285 Yards

13th of 18

#### TEAM SCORES

1.	Michigan State	285-283-292=860	-4
2.	Auburn	296-286-290=872	+8
3.	Alabama	290-289-296=875	+11
T4.	Texas A&M	304-287-289=880	+16
T4.	Vanderbilt	298-284-298=880	+16
6.	Tennessee	291-297-293=881	+17
7.	Duke	299-289-295=883	+19
8.	Virginia	292-292-300=884	+20
9.	Wake Forest	293-291-301=885	+21
10.	Louisville	304-285-298=887	+23
11.	North Carolina	296-296-298=890	+26
12.	Denver	302-300-290=892	+28
13.	<b>South Carolina</b>	<b>295-296-302=893</b>	<b>+29</b>
14.	Florida State	294-297-307=898	+34
15.	NC State	301-293-306=900	+36
16.	UNC Wilmington	310-291-302=903	+39
17.	Kent State	306-293-306=905	+41
18.	East Carolina	316-311-319=946	+82

#### INDIVIDUAL MEDALIST

Sara-Maude Juneau, Louisville 70-68-68=206 -10

#### GAMECOCKS

T21.	Benedicte Toumpsin	73-74-75=221	+5
T38.	Corrine Carr	78-74-71=223	+7
T53.	Meredith Swanson	73-75-79=227	+11
T53.	Amanda Strang	74-73-80=227	+11
T61.	Katie Burnett	76-75-77=228	+12

**CHAPEL HILL, N.C.** — Senior Corrine Carr shot a 1-under-par 71 on Sunday to lead South Carolina in the final round of the Lady Tar Heel Invitational. The Gamecocks shot 302 as a team to finish the tournament in 13th place at 893 (+29) at the UNC Finley Golf Course.

Carr's round of 71 was her best in two years as a Gamecock, surpassing a pair of 72s she shot earlier in the season. Starting on the 12th hole with the shotgun start, Carr made six straight pars before a birdie at the 18th. She would make bogey as she started the front nine, but erased that with birdie at No. 2. Another birdie at the sixth hole got her to 2-under, but a bogey at the 10th would leave her at 1-under for the day. She finished at 223 (+7) for the week, tied for 38th place. Senior Benedicte Toumpsin was the low Gamecock for the week with rounds of 72-74-75=221 (+5). Her closing-round 75 included two bogeys on the front nine and another pair of bogeys along with one birdie on the back side. She would finish tied for 21st.

Freshmen Meredith Swanson and Amanda Strang tied for 53rd place at 227 (+11). Swanson shot 79 on Sunday while Strang finished with an 80. Sophomore Katie Burnett shot 77 on Sunday to finish at 12-over, tied for 61st place.

Michigan State was the wire-to-wire tournament champion at 860 (-4), 12 shots ahead of runner-up Auburn (+8). Alabama finished third at 11-over with Texas A&M and Vanderbilt tied for fourth at 16-over.

Louisville's Sara-Maude Juneau ran away with medalist honors, shooting her second straight round of 68 (-4) on Sunday to finish at 206 (-10) and take a six-stroke victory. Vanderbilt's Marina Alex and Michigan State's Laura Kueny tied for second at 4-under.



### Mercedes-Benz Women's Championship

Fox Den Country Club  
Oct. 16-18, 2009 • Knoxville, Tenn.  
Par 72 • 6,317 Yards  
**3rd of 18**

#### TEAM SCORES

1.	Tennessee	283-291-294=868	+4
2.	Louisville	296-286-305=887	+23
<b>3.</b>	<b>South Carolina</b>	<b>302-290-297=889</b>	<b>+25</b>
4.	Kent State	296-300-301=897	+33
5.	Wake Forest	312-298-289=899	+35
6.	TCU	314-295-291=900	+36
7.	Florida	304-295-303=902	+38
8.	Chattanooga	300-302-305=907	+43
9.	Notre Dame	306-300-302=908	+44
10.	Mississippi	309-296-304=909	+45
T11.	LSU	306-301-303=910	+46
T11.	NC State	302-307-301=910	+46
13.	Tulane	304-307-302=913	+49
14.	Arkansas	304-309-307=920	+56
15.	Ohio State	306-313-302=921	+57
16.	Furman	310-306-312=928	+64
17.	Kentucky	322-309-306=937	+73
18.	UTSA	309-318-321=948	+84

#### INDIVIDUAL MEDALIST

Nathalie Mansson, Tennessee 71-71-71=213 -3

#### GAMECOCKS

5.	Corrine Carr	73-73-71=217	+1
T15.	Benedicte Toumpsin	76-72-75=223	+7
T15.	Katie Burnett	75-73-75=223	+7
T29.	Amanda Strang	79-72-76=227	+11
T66.	Meredith Swanson	78-79-77=234	+18

### Central District Invitational

River Wilderness Golf Club  
Feb. 22-23, 2010 • Parrish, Fla.  
Par 72 • 6,099 Yards  
**11th of 15**

#### TEAM SCORES

1.	Florida	290-281-286=857	-7
2.	TCU	295-296-295=886	+22
3.	Purdue	295-303-291=889	+25
4.	Michigan State	294-313-288=895	+31
T5.	LSU	295-303-300=898	+34
T5.	Ohio State	302-303-293=898	+34
T5.	Texas A&M	295-308-295=898	+34
8.	Arkansas	303-293-304=900	+36
9.	Kent State	306-299-299=904	+40
10.	Texas	304-302-300=906	+42
<b>T11.</b>	<b>South Carolina</b>	<b>301-309-305=915</b>	<b>+51</b>
T11.	Northwestern	302-310-303=915	+51
13.	Missouri	306-309-304=919	+55
14.	Notre Dame	310-308-303=921	+57
15.	Michigan	320-299-304=923	+59

#### INDIVIDUAL MEDALISTS

Isabelle Lendl, Florida	74-67-71=212	-4
Marika Lendl, Florida	72-70-70=212	-4

#### GAMECOCKS

T31.	Corrine Carr	72-80-75=227	+11
T39.	Benedicte Toumpsin	76-76-77=229	+13
T50.	Taylor Barrett	76-78-77=231	+15
T60.	Katie Burnett	77-80-77=234	+18
T64.	Amanda Strang	84-75-76=235	+19

**KNOXVILLE, Tenn.** — Three South Carolina individuals earned top-15 finishes and the Gamecock women's golf team took home its best finish from a 54-hole stroke play event since 2005 with a third-place showing at the Mercedes-Benz Women's Collegiate Championship. The Gamecocks shot 297 (+9) on Sunday to finish at 889 (+25) for the tournament, only two strokes back of runner-up Louisville. South Carolina had its best-ever finish at the Mercedes-Benz, surpassing its fourth-place showing in 1999. It was also a vast improvement from last year's tournament at Fox Den Country Club when the Gamecocks shot 912 to finish in 15th place.

Senior Corrine Carr led the way with a career-best fifth place finish at 1-over par for the tournament. Her 54-hole total of 217 was three shots better than her previous career low, a 220 at the 2008 NCAA East Regional while a sophomore at Furman. She shot 71 in the final round, the Gamecocks' only sub-par round of the week and one of only six in the field Sunday. Benedicte Toumpsin and Katie Burnett entered the day tied, then shot matching rounds of 75 (+3) to remain that way, finishing in a tie for 15th place. Freshman Amanda Strang tied for 29th after shooting 76 in the final round, and fellow rookie Meredith Swanson improved by two strokes in the final round with a 77 to finish in a tie for 66th.

Conditions were highly unfavorable all three days of the event. Rain on Friday coupled with bitter cold and wind for the weekend made low scores rare throughout the field. But the Gamecocks were undeterred, placing three individuals in the top 15 for the first time since the 2005 Chrysler Challenge.

Tennessee was the wire-to-wire winner of their home tournament, taking a 19-shot victory at 868 (+4). Louisville was second at 887 (+23) with the Gamecocks only two shots back of the Cardinals. Carolina was eight shots clear of their next-closest competitor, Kent State (+33).

**PARRISH, Fla.** — South Carolina's women's golf finished Tuesday's final round of the Central District Invitational right where they started as the Gamecocks shot 305 (+17) to earn a tie for 11th-place at River Wilderness Golf Club just outside the Tampa Bay area.

Senior Corrine Carr led the way for the Gamecocks, shooting 75 (+3) on the final day to finish at 11-over-par 227 for the tournament, earning a tie for 31st place. Carr improved by five strokes over her second-round score as she wrapped up her week with a two-birdie, five-bogey performance.

Seniors Benedicte Toumpsin and Taylor Barrett, along with sophomore Katie Burnett, each posted matching rounds of 77 (+5) to round out the weekend. Toumpsin finished the week at 229 (+13), tied for 39th place, as she had an up-and-down day on Tuesday that included four birdies and four bogeys to go along with a double- and triple-bogey. Barrett had a pair of birdies to go along with five bogeys and a double as she finished her tournament at 231 (+15), tied for 50th. Burnett's round was similar to Toumpsin's as she went 36-41 with three birdies, four bogeys and two doubles. The sophomore concluded her tournament at 234 (+18).

Freshman Amanda Strang had a strong round going at 1-over par with just two holes to play, but a double bogey-bogey finish left her at 4-over 76 for the day and 19-over 235 for the tournament.

Florida ran away with the tournament title, shooting a three-day total of 857 (-7) to take a 29-stroke victory over runner-up TCU (+22). Fourth-ranked Purdue was third at 889 (+25). Gator sisters Isabelle and Marika Lendl shared medalist honors at 212 (-4) with Arkansas' Kelli Shean in third place at even par.





**Kinderlou Challenge**  
 Kinderlou Forest Golf Club  
 March 1-2, 2010 • Valdosta, Ga.  
 Par 73 • 6,265 Yards  
**11th of 18**

**TEAM SCORES**

1.	Tulane	293-296-300=889	+13
2.	Ohio State	302-292-302=896	+20
3.	Tennessee	299-298-304=901	+25
4.	Georgia	302-296-305=903	+27
5.	Vanderbilt	301-302-301=904	+28
6.	Virginia	302-305-301=908	+32
T7.	Florida	295-309-309=913	+37
T7.	Mississippi	307-299-307=913	+37
9.	LSU	299-308-308=915	+39
10.	Florida State	307-302-307=916	+40
<b>11.</b>	<b>South Carolina</b>	<b>304-308-307=919</b>	<b>+43</b>
12.	Kent State	307-303-311=921	+45
13.	Arkansas	308-313-305=926	+50
14.	North Carolina	318-318-309=945	+69
T15.	Kentucky	313-322-318=953	+77
T15.	Chattanooga	322-311-320=953	+77
17.	Kennesaw State	315-323-321=959	+83
18.	Mississippi State	323-321-320=964	+88

**INDIVIDUAL MEDALIST**

Janine Fellows, Tulane 74-73-70=217 -2

**GAMECOCKS**

T16.	Katie Burnett	75-74-76=225	+6
T46.	Benedicte Toumpsin	76-81-76=233	+14
T49.	Corrine Carr	77-76-81=234	+15
T53.	Amanda Strang	76-82-77=234	+16
71.	Taylor Barrett	86-77-78=241	+22

**VALDOSTA, Ga.** – South Carolina's women's golf team got a consistent 54 holes from sophomore Katie Burnett en route to an 11th-place team finish at the Kinderlou Challenge, which wrapped up Tuesday at Kinderlou Forest Golf Club. The Gamecocks posted a team score of 304-308-307=919 (+43) to earn 11th place in the 18-team field.

Burnett, a sophomore from Brunswick, Ga., posted rounds of 75-74-76=225 (+6) on the par 73, 6,265-yard track to earn a tie for 16th place, her third top-20 finish of the season. Burnett had to finish her second round this morning along with the rest of the field, but was unshaken by the suspension of play as she posted a two-birdie, three-bogey 74. She was equally consistent in the final round, carding 13 pars and a birdie against just four bogeys to record a 3-over day.

Senior Benedicte Toumpsin had a very steady final round with the only blemishes on her scorecard a double-bogey at the 7th and a bogey at the 14th. She carded rounds of 76-81-76=233 (+14) to finish in a tie for 46th place. One stroke back was senior Corrine Carr, who went 77-76-81=234 (+15) to tie for 49th. Freshman Amanda Strang tied for 53rd with a three-round total of 235 (+16), and senior Taylor Barrett was 71st at 241 (+22).

Tulane held on to its first-round lead to take a seven-stroke victory at 889 (+13) with Ohio State taking the team runner-up spot at 896 (+20). SEC foes Tennessee, Georgia and Vanderbilt took the next three spots. Individually, it was the Green Wave's Janine Fellows turning in the only 54-hole total under par with a 217 (-2). Vanderbilt's Marina Alex, ranked No. 2 in the country, and Georgia's Marta Silva Zamora, the defending SEC Champion, tied for second at 219 (E).

**Liz Murphey Collegiate Classic**  
 UGA Golf Course  
 March 26-28, 2010 • Athens, Ga.  
 Par 72 • 6,335 Yards  
**11th of 23**

**TEAM SCORES**

1.	Duke	300-300-289=889	+25
2.	Alabama	316-302-292=910	+46
3.	Arkansas	312-303-297=912	+48
T4.	Purdue	310-315-290=915	+51
T4.	Auburn	310-299-306=915	+51
6.	Wake Forest	316-304-301=921	+57
T7.	Michigan State	314-307-307=928	+64
T7.	North Carolina	310-304-314=928	+64
9.	Denver	321-312-296=929	+65
10.	Ohio State	315-311-306=931	+67
<b>T11.</b>	<b>South Carolina</b>	<b>324-309-299=932</b>	<b>+68</b>
T11.	Virginia	320-311-301=932	+68
13.	Georgia State	322-305-306=933	+69
14.	Georgia (A)	321-311-302=934	+70
15.	Tulane	319-315-303=937	+73
16.	Tennessee	318-319-301=938	+74
17.	Kent State	320-309-310=939	+75
18.	Florida	314-322-308=944	+80
19.	Furman	323-319-309=951	+87
20.	Mississippi	327-315-310=952	+88
21.	UCF	330-327-317=974	+110
T22.	Mississippi State	342-333-315=990	+126
T22.	Georgia (B)	329-340-321=990	+126

**INDIVIDUAL MEDALIST**

Lindy Duncan, Duke 70-72-71=213 -3

**GAMECOCKS**

T20.	Katie Burnett	82-75-72=229	+13
T28.	Benedicte Toumpsin	81-76-74=231	+15
T69.	Amanda Strang	80-82-77=239	+23
T69.	Corrine Carr	81-79-79=239	+23
T81.	Taylor Barrett	86-79-76=241	+25

**ATHENS, Ga.** – South Carolina was one of only six teams in the field to break 300 on Sunday, climbing up the leaderboard to a tie for 11th place against a very strong field at the Liz Murphey Collegiate Classic. Katie Burnett earned her fifth top-20 of the season after closing with a 72. The Gamecocks posted a closing round of 299 (+15), the sixth-best team round of the day and easily South Carolina's best of the weekend. South Carolina tied Virginia for 11th place at 932 (+68) on a very tough scoring weekend for all 23 teams in the field. All five Gamecocks had their best rounds of the tournament on Sunday, resulting in a 25-stroke improvement in the team score from the opening round and a 10-stroke upgrade from Saturday's second round.

Burnett, a sophomore from Brunswick, Ga., had a rare even-par round of 72 on Sunday, going 36-36 to close strong and tie for 20th place. Benedicte Toumpsin was lights-out on the course's back nine, posting a 3-under 34 on that side. She struggled with the front side, however, with four bogeys and a double-bogey, along with one birdie, on the front nine to finish with a 74 (+2) to tie for 28th place overall. Amanda Strang and Corrine Carr tied for 69th place as Strang potted a 77 (+5) on Sunday, a five-shot improvement over her second round, and Carr signed for a 79 (+7) to match her second-round score. Taylor Barrett had her best round of the week with a 76 (+4) on Sunday that included three birdies plus an eagle at the 385-yard, par-4 fourth hole.



**Bryan National Collegiate**  
 Bryan Park Players Course  
 April 2-4, 2010 • Greensboro, N.C.  
 Par 72 • 6,323 Yards  
**9th of 18**

**TEAM SCORES**

1.	Florida State	291-288-284=873	+9
2.	Wake Forest	289-291-294=874	+10
T3.	Ohio State	292-300-294=886	+22
T3.	Vanderbilt	291-304-291=886	+22
T3.	Duke	293-300-293=886	+22
T6.	Tennessee	287-305-296=888	+24
T6.	North Carolina	301-297-290=888	+24
8.	LSU	306-295-289=890	+26
<b>9.</b>	<b>South Carolina</b>	<b>294-302-297=893</b>	<b>+29</b>
10.	Northwestern	309-298-288=895	+31
11.	Virginia	304-306-289=899	+35
12.	Auburn	303-297-300=900	+36
13.	Arkansas	306-300-297=903	+39
14.	Louisville	308-298-302=908	+44
15.	College of Charleston	302-309-303=914	+50
16.	UNC Greensboro	306-301-317=924	+60
17.	NC State	316-316-309=941	+77
18.	UNC Wilmington	317-314-311=942	+78

**INDIVIDUAL MEDALIST**

Cheyenne Woods, Wake Forest 70-69-72=211 -5

**GAMECOCKS**

T20.	Katie Burnett	70-76-76=222	+6
T20.	Benedicte Toumpsin	74-75-73=222	+6
T35.	Amanda Strang	79-73-73=225	+9
T54.	Taylor Barrett	75-78-78=229	+13
T63.	Corrine Carr	75-81-75=231	+15

**GREENSBORO, N.C.** – Senior Benedicte Toumpsin and sophomore Katie Burnett tied for 20th place as the South Carolina women's golf team finished in ninth place at the Bryan National Collegiate, shooting 297 (+9) in Sunday's final round to finish at 893 (+29) overall.

Toumpsin shot 73 (+1) in her final round – her best score of the week – to get to 222 (+6) for the week and earn her second top-20 finish of the season. Starting on hole No. 7 with the shotgun start, the Belgium native had a bogey on her third hole of the day, but then responded with a birdie and an eagle on consecutive holes to get to 2-under. Three straight bogeys would put her back over par, but she would par her final nine holes to close out the tournament.

Burnett, a native of Brunswick, Ga., also finished at 222 (+6) and tied for 20th place, her sixth top-20 finish in eight events this year. She closed with a 76 (+4) that included two birdies, two bogeys and a pair of double bogeys on the day. Burnett has been either the top finisher or tied for the top spot on the team in five of eight tournaments this season, including three in a row.

Freshman Amanda Strang had her second straight solid round, shooting a 1-over 73 to tie for 35th place at 225 (+9). She had three bogeys on the day, but got two of those shots back on one swing as she eagled the par-4, 389-yard first hole, which was her 12th of the day. Senior Taylor Barrett shot 76 (+4) on Sunday to finish tied for 54th, and senior Corrine Carr tied for 63rd after closing with a 75 (+3) on Sunday.

Florida State outlasted co-host Wake Forest for the team title as both teams posted scores of 294 (+6) on the day; FSU finished at 873 (+9) and Wake was at 874 (+10). Ohio State, Vanderbilt and Duke tied for third at 886 (+22). The Demon Deacons' Cheyenne Woods was the individual medalist at 211 (-5), with Tennessee's Nathalie Mansson in second and Virginia's Brittany Altomare and Duke's Lindy Duncan tied for third.

**SEC Championship**  
 NorthRiver Yacht Club  
 April 16-18, 2010 • Tuscaloosa, Ala.  
 Par 71 • 6,057 Yards  
**7th of 12**

**TEAM SCORES**

1.	Alabama	287-278-283=848	-4
2.	Vanderbilt	284-281-287=852	E
3.	Arkansas	280-288-291=859	+7
4.	Georgia	280-291-289=860	+8
5.	Auburn	289-288-284=861	+9
6.	LSU	284-290-292=866	+14
<b>7.</b>	<b>South Carolina</b>	<b>289-290-288=867</b>	<b>+15</b>
8.	Mississippi	284-298-294=876	+24
9.	Tennessee	298-291-288=877	+25
10.	Florida	298-300-291=889	+37
11.	Kentucky	302-296-308=906	+54
12.	Mississippi State	309-301-315=925	+73

**INDIVIDUAL MEDALISTS**

Marina Alex, Vanderbilt*	71-65-72=208	-5
Erica Popson, Tennessee	73-67-68=208	-5
*won playoff		

**GAMECOCKS**

15.	Katie Burnett	72-70-72=214	+1
20.	Benedicte Toumpsin	68-72-77=217	+4
T21.	Corrine Carr	76-75-67=218	+5
T28.	Amanda Strang	74-74-72=220	+7
T44.	Taylor Barrett	75-74-78=227	+14

**TUSCALOOSA, Ala.** – Senior Corrine Carr shot the best round of her collegiate career with a bogey-free 67 (-4) on Sunday to lead South Carolina in the final round of the SEC Women's Golf Championship at NorthRiver Yacht Club. The Gamecocks shot 288 (+4) on the day to finish in seventh place at 867 (+15) overall, one shot back of LSU.

Carr, a native of Pinehurst, N.C., had the tournament field's low round of the day; it was one of only seven rounds in the 60s in Sunday's final round. It was also the best 18-hole score of her career, surpassing a 69 in the first round of the 2008 NCAA East Regional, which came while she was a sophomore at Furman. Her round was flawless with four birdies and no bogeys on a course that played difficult all week long.

Sophomore Katie Burnett was the high finisher for South Carolina this week, turning in rounds of 72-70-72=214 (+1) to finish alone in 15th place. It was Burnett's seventh top-20 finish in nine events this season and her score of 214 was her season-best by eight shots.

Freshman Amanda Strang completed a successful first SEC Championship with a tie for 28th place after shooting 72 (+1) on Sunday, her best round of the tournament, to finish at 220 (+7) for the week. As with Burnett, it was Strang's best 54-hole total of the season, five shots better than a 225 two weeks ago at the Bryan National Collegiate.

Senior Benedicte Toumpsin earned her third top-20 finish of the season at 217 (+4) despite a 6-over-par 77 in the final round. It was the 17th career top-20 finish for Toumpsin. Taylor Barrett shot 78 (+7) on the final day to finish at 227 (+14) for the week, tied for 44th place.

The Gamecocks' team score of 288 was its second time in three rounds to shoot their best team total of the year and ties for the fourth-lowest score in team history, equaling a second-round effort in the 2006 Dick McGuire Intercollegiate.



**ECU/Duke Tri-Match**  
 Ironwood Country Club  
 April 24, 2010 • Greenville, N.C.  
 Par 72 • 6,321 Yards  
**2nd of 3**

**TEAM SCORES**

1.	East Carolina	293-292=585	+9
2.	<b>South Carolina</b>	<b>295-293=588</b>	<b>+12</b>
3.	Duke	299-295=594	+18

**INDIVIDUAL MEDALIST**

Amber Littman, East Carolina	71-68=139	-5
------------------------------	-----------	----

**GAMECOCKS**

T4. Corrine Carr	71-74=145	+1
T4. Katie Burnett	72-73=145	+1
T6. Amanda Strang	76-72=148	+4
8. Taylor Barrett	76-74=150	+6
16. Meredith Swanson	95-77=172	+28

**GREENVILLE, N.C.** — Corrine Carr and Katie Burnett tied for fourth place in the 17-player field, leading South Carolina to a second-place finish in a tri-match with Duke and East Carolina on Saturday at Ironwood Country Club. The Gamecocks shot 588 (+12) in the 36-hole outing to finish three strokes behind the Pirates and six ahead of the third-ranked Blue Devils.

Burnett and Carr posted totals of 145 (+1) to tie for fourth place. Carr had her second straight sub-par round in the morning with a 71, then followed up with a 74. Burnett went 72-73 on the day to mark her sixth time in 10 events to be one of the Gamecocks' top finishers. Freshman Amanda Strang tied for sixth place with rounds of 76-72=148 (+4), and Taylor Barrett shot 76-74=150 (+6) to finish in eighth place.

East Carolina's Amber Littman was the day's medalist, shooting 71-68=139 (-5) to finish three shots clear of Duke's Kim Donovan, who went 72-70=142 (-2). ECU's Abby Bools was third at even-par 144, followed by Burnett and Carr.

**NCAA East Regional**  
 Ironwood Country Club  
 May 6-8, 2010 • Greenville, N.C.  
 Par 72 • 6,321 Yards  
**1st of 24**

**TEAM SCORES**

1.	<b>South Carolina</b>	<b>283-291-290=864</b>	<b>E</b>
2.	Tennessee	283-287-296=866	+2
T3.	Auburn	280-295-293=868	+4
T3.	Duke	290-278-300=868	+4
5.	Vanderbilt	292-287-292=871	+7
6.	Tulane	285-295-293=873	+9
7.	Pepperdine	281-290-306=877	+13
8.	TCU	287-296-297=880	+16
T9.	Texas Tech	285-298-304=887	+23
T9.	Wake Forest	296-295-296=887	+23
11.	Florida	284-297-309=890	+26
12.	East Carolina	293-305-297=895	+31
13.	North Carolina	294-292-313=899	+35
14.	Campbell	297-307-298=902	+38
15.	East Tennessee State	285-304-314=903	+39
16.	Furman	305-296-303=904	+40
17.	Washington	305-295-307=907	+43
18.	Chattanooga	293-301-316=910	+46
T19.	Stetson	298-306-307=911	+47
T19.	Coastal Carolina	307-296-308=911	+47
21.	Georgia State	290-310-317=917	+53
22.	College of Charleston	297-310-314=921	+57
23.	Charleston Southern	315-318-315=948	+84
24.	Fairleigh Dickinson	327-331-332=990	+126

**INDIVIDUAL MEDALIST**

Katie Burnett, South Carolina	67-72-71=210	-6
-------------------------------	--------------	----

**GAMECOCKS**

1.	Katie Burnett	67-72-71=210	-6
T13.	Corrine Carr	72-71-74=217	+1
T19.	Benedicte Toumpsin	74-72-72=218	+2
T39.	Amanda Strang	70-79-73=222	+6
T73.	Taylor Barrett	76-76-76=228	+12

**GREENVILLE, N.C.** — See Full Story on Page 20.



**2010 NCAA CHAMPIONSHIP**

**May 18-21 • Country Club of Landfall - Dye Course • Wilmington, N.C. • Par 72 • 6,368 Yards  
300-297-293-296=1186 • T-14th of 24**

**TEAM RESULTS**

1. Purdue	284-294-280-295=1153	+1
2. Southern Cal	282-288-295-289=1154	+2
3. Alabama	289-288-294-286=1157	+5
4. Arizona State	288-293-290-290=1161	+9
5. Arizona	296-286-293-291=1166	+14
6. UCLA	288-292-302-287=1169	+17
7. Vanderbilt	296-292-291-291=1170	+18
T8. Duke	288-303-300-288=1179	+27
T8. Oklahoma State	295-294-296-294=1179	+27
10. Florida State	289-302-294-297=1182	+30
T11. Auburn	293-296-295-299=1183	+31
T11. Texas A&M	297-302-286-298=1183	+31
13. Virginia	294-291-307-292=1184	+32
<b>T14. South Carolina</b>	<b>300-297-293-296=1186</b>	<b>+34</b>
T14. Pepperdine	297-306-288-295=1186	+34
T16. New Mexico	303-296-295-295=1189	+37
T16. Texas	299-296-300-294=1189	+37
18. Tulane	311-292-297-293=1193	+41
T19. TCU	292-308-295-304=1199	+47
T19. Tennessee	297-307-300-295=1199	+47
T19. Stanford	300-307-302-290=1199	+47
22. Kent State	307-305-297-291=1200	+48
T23. Oregon	302-309-313-294=1218	+66
T23. San Jose State	298-310-313-297=1218	+66



**T-9th • Katie Burnett**

72-74-69-71=286 (-2)

--Third top-10 NCAA finish in South Carolina history



**T-54th • Corrine Carr**

76-75-76-71=298 (+10)

--Had 10th-best scoring season in Gamecock golf history



**T-67th • Benedicte Toumpsin**

77-75-72-77=301 (+15)

--Finishes Gamecock career third all-time in scoring average



**T-99th • Amanda Strang**

75-73-81-77=306 (+18)

--Competed in every tournament as a freshman



**T-102nd • Taylor Barrett**

77-76-76-78=307 (+21)

--Improved by 21 shots over 2008 NCAA Championship

**2009-10 STATISTICAL BREAKDOWN**

**Rounds at Par or Better**

Katie Burnett.....	12
Corrine Carr.....	10
Benedicte Toumpsin.....	6
Amanda Strang.....	4

**Eagles**

Taylor Barrett.....	2
Amanda Strang.....	1
Benedicte Toumpsin.....	1

**Birdies**

Katie Burnett.....	94
Corrine Carr.....	76
Amanda Strang.....	69
Benedicte Toumpsin.....	66
Taylor Barrett.....	33
Meredith Swanson.....	22
Taylor Weaver.....	1

**Pars Per Round**

Katie Burnett.....	11.44
Benedicte Toumpsin.....	11.33
Corrine Carr.....	11.12
Amanda Strang.....	11.03
Taylor Barrett.....	10.79

**Bogeys Per Round**

Katie Burnett.....	3.24
Benedicte Toumpsin.....	3.73
Amanda Strang.....	4.09
Corrine Carr.....	4.24
Taylor Barrett.....	4.92
Meredith Swanson.....	5.00

**Par 3 Scoring**

Katie Burnett.....	3.13
Amanda Strang.....	3.17
Benedicte Toumpsin.....	3.21
Corrine Carr.....	3.21
Meredith Swanson.....	3.29
Taylor Barrett.....	3.35

**Par 4 Scoring**

Katie Burnett.....	4.12
Corrine Carr.....	4.16
Benedicte Toumpsin.....	4.19
Amanda Strang.....	4.30
Taylor Barrett.....	4.33
Meredith Swanson.....	4.40

**Par 5 Scoring**

Katie Burnett.....	4.97
Amanda Strang.....	5.02
Benedicte Toumpsin.....	5.05
Corrine Carr.....	5.10
Taylor Barrett.....	5.13
Meredith Swanson.....	5.33

**First-Round Average**

Katie Burnett.....	73.00
Corrine Carr.....	75.17
Benedicte Toumpsin.....	75.30
Amanda Strang.....	76.08
Taylor Barrett.....	78.38
Meredith Swanson.....	80.80

**Last-Round Average**

Corrine Carr.....	73.58
Katie Burnett.....	74.00
Amanda Strang.....	74.92
Benedicte Toumpsin.....	75.10
Taylor Barrett.....	76.63
Meredith Swanson.....	76.80

**Taylor Barrett • Senior • York, S.C.**

Tournament	Rounds	Finish
Match Play vs. Virginia	(E. Collins)	Halved
Match Play vs. Chattanooga	(M. Salinas)	L, 2 up
Central District	76-78-77=231 (+15)	T-50th
Kinderlou Challenge	86-77-78=241 (+22)	71st
Liz Murphey Collegiate	86-79-76=241 (+25)	T-81st
Bryan National Collegiate	75-78-76=229 (+13)	T-54th
SEC Championship	75-74-78=227 (+14)	T-44th
ECU/Duke Tri-Match	76-74=150 (+6)	8th
NCAA East Regional	76-76-76=228 (+12)	T-73rd
NCAA Championship	77-76-76-78=307 (+19)	T-102nd

**Katie Burnett • Sophomore • Brunswick, Ga.**

Tournament	Rounds	Finish
NGCA Match Play Qualifier	69-75=144 (E)	T-3rd
Match Play vs. Virginia	(B. Altomare)	Halved
Match Play vs. Alabama	(C. Lennarth)	L, 2 & 1
Match Play vs. Chattanooga	(K. Stewart)	W, 1 up
Mason Rudolph	69-73-142 (-2)	T-20th
Lady Tar Heel	76-75-77=228 (+12)	T-61st
Mercedes-Benz	75-73-75=223 (+7)	T-15th
Central District	77-80-77=234 (+18)	T-60th
Kinderlou Challenge	75-74-76=225 (+6)	T-16th
Liz Murphey Collegiate	82-75-72=229 (+13)	T-20th
Bryan National Collegiate	70-76-76=222 (+6)	T-20th
SEC Championship	72-70-72=214 (+1)	15th
ECU/Duke Tri-Match	72-73=145 (+1)	T-4th
<b>NCAA East Regional</b>	<b>67-72-71=210 (-6)</b>	<b>Medalist</b>
NCAA Championship	72-74-69-71=286 (-2)	T-9th

**Corrine Carr • Senior • Pinehurst, N.C.**

Tournament	Rounds	Finish
NGCA Match Play Qualifier	72-73=145 (+1)	T-8th
Match Play vs. Virginia	(C. Nielson)	L, 2 & 1
Match Play vs. Alabama	(C. Harter)	W, 7 & 6
Match Play vs. Chattanooga	(E. de Groot)	L, 1 up
Mason Rudolph	79-72=151 (+7)	T-76th
Lady Tar Heel	78-74-71=223 (+7)	T-38th
Mercedes-Benz	73-73-71=217 (+1)	5th
Central District	72-80-75=227 (+11)	T-31st
Kinderlou Challenge	77-76-81=234 (+15)	T-49th
Liz Murphey Collegiate	81-79-79=239 (+23)	T-69th
Bryan National Collegiate	75-81-75=231 (+15)	T-63rd
SEC Championship	76-75-67=218 (+5)	T-21st
ECU/Duke Tri-Match	71-74=145 (+1)	T-4th
NCAA East Regional	72-71-74=217 (+1)	T-13th
NCAA Championship	76-75-76-71=298 (+10)	T-54th

**Amanda Strang • Freshman • Jonstorp, Sweden**

Tournament	Rounds	Finish
NGCA Match Play Qualifier	72-72=144 (E)	T-3rd
Match Play vs. Virginia	(W. Neuhauser)	L, 1 up
Match Play vs. Alabama	(J. Kirby)	L, 4 & 3
Match Play vs. Chattanooga	(C. Wolf)	W, 3 & 2
Mason Rudolph	74-74=148 (+4)	T-61st
Lady Tar Heel	74-73-80=227 (+11)	T-53rd
Mercedes-Benz	79-72-76=227 (+11)	T-29th
Central District	84-75-76=234 (+19)	T-64th
Kinderlou Challenge	76-82-77=235 (+16)	T-53rd
Liz Murphey Collegiate	80-82-77=239 (+23)	T-69th
Bryan National Collegiate	79-73-73=225 (+9)	T-35th
SEC Championship	74-74-72=220 (+7)	T-28th
ECU/Duke Tri-Match	76-72=148 (+4)	T-6th
NCAA East Regional	70-79-73=222 (+6)	T-39th
NCAA Championship	75-73-81-77=306 (+18)	T-99th

**Meredith Swanson • Freshman • Roanoke, Va.**

Tournament	Rounds	Finish
NGCA Match Play Qualifier	80-74=154 (+10)	T-46th
Match Play vs. Virginia	(N. Agnello)	W, 5 & 3
Match Play vs. Alabama	(B. Pancake)	L, 4 & 3
Mason Rudolph	78-77=155 (+11)	84th
Lady Tar Heel	73-75-79=227 (+11)	T-53rd
Mercedes-Benz	78-79-77=234 (+18)	T-66th
ECU/Duke Tri-Match	95-77=172 (+28)	16th

**Bénédicte Toumpsin • Senior • Sombrefe, Belgium**

Tournament	Rounds	Finish
NGCA Match Play Qualifier	79-75=154	T-46th
Match Play vs. Alabama	(R. Nair)	Halved
Match Play vs. Chattanooga	(M.J. Loza)	W, 3 & 1
Lady Tar Heel	72-74-75=221 (+5)	T-21st
Mercedes-Benz	76-72-75=223 (+7)	T-15th
Central District	76-76-77=229 (+13)	T-39th
Kinderlou Challenge	76-81-76=233 (+13)	T-46th
Liz Murphey Collegiate	81-76-74=234 (+15)	T-28th
Bryan National Collegiate	74-75-73=222 (+6)	T-20th
SEC Championship	68-72-77=217 (+4)	20th
NCAA East Regional	74-72-72=218 (+2)	T-19th
NCAA Championship	77-75-72-77=301 (+13)	T-67th

**Taylor Weaver • Sophomore • Spartanburg, S.C.**

Tournament	Rounds	Finish
Mason Rudolph	81-80=161 (+17)	88th



# 2010 NCAA East Regional Champions

## *South Carolina holds off Tennessee by two strokes to win first regional title in program history; Burnett shoots 210 (-6) to take medalist honors*

**GREENVILLE, N.C.** – It finally all came together.

After going five years without a team tournament victory of any kind, the South Carolina women's golf team took down some of the nation's best teams in winning the NCAA East Regional on Saturday, posting a 54-hole score of 864 (E) to defeat Tennessee by two shots.

The key component of the Gamecocks' team victory came in the person of sophomore Katie Burnett, who shot a closing round of 71 (-1) to earn medalist honors for the first time in her collegiate career with a 3-day total of 210 (-6), one shot ahead of Auburn's Carlie Yadloczky.

"I'm really proud of them," coach Kalen Anderson said. "They played really steady for three days, and played very well under really windy conditions today. We've been knocking on the door for a couple of tournaments now where they've been close and just haven't finished one, but they finished one at the right time (today) and I'm really proud of them."

The Gamecocks posted the best team round of the final day at 290 (+2) to overcome a five-shot deficit entering Saturday's third round. Duke, who led after two rounds of play, fell back to a tie for third after a closing round of 300 (+12). Tennessee, meanwhile, traded the lead with South Carolina and Duke for most of the day, but struggled down the stretch to post a final-day score of 296 (+8).

Carolina traded the lead back and forth with Duke, Tennessee, Auburn and Pepperdine throughout the day, but it appeared late in the day that it would come down to a duel with the Lady Vols. But the Gamecocks, as a team, were 3-under over their final three holes of the day while Tennessee was 1-over in that same stretch on the back nine, including one double-bogey at 18 that proved to be the difference.

Burnett was steady as a rock throughout the day and throughout the tournament. On a day when par was a very good score, the sophomore from Brunswick, Ga., had 15 of them. She first moved into red figures with a birdie at the dogleg-left par-4 14th, then saw a putt at the 18th just miss as she made the turn at 1-under. She faced a tough start to the more-exposed front nine as she fought her way out of a fairway bunker to make bogey at No. 2, then had a birdie putt at No. 4 lip out. She took dead aim at the par-5 seventh hole to card what would be the clinching birdie, then made pars at the eighth and ninth to hold on for the victory.

"To be honest, I don't think it's really hit me yet," Burnett said. "I'm still a little speechless at the moment. But I really couldn't be happier. I missed a few putts here and there, but I knew that if I kept playing the way I was playing, a few putts would fall coming down to the end."

Coming to the ninth and final hole, Burnett hit her approach past the flag to about 12 feet, but didn't know if she needed to make it to secure the victory. It turned out that all she needed was a two-putt for par, and that's what she managed to do as the awaiting Gamecock team stormed the green for hugs and high-fives all around.

Burnett's round of 210 ties for the fifth-best 54-hole individual total in school history, equaling an effort by Siew-Ai Lim at the 1994 Carolyn Cudone Invitational. In addition to becoming the 12th different Gamecock women's golfer to win an individual title, she is the third to win an NCAA East Regional. Teammate Benedicte Toumpsin won the 2008 event in Athens, Ga., and Lim was the medalist at the 1995 regional in Memphis, Tenn.

But it wasn't just Burnett's effort that led to the 17th team title in program history. Toumpsin turned in her second-straight round of even-par 72 to post a three-day total of 218 (+2) and a likely top-20 finish. She started off her final round with eight consecutive pars before coming to the 18th hole that had been a death trap for the Gamecocks all week. The pond down the left side claimed Toumpsin's tee shot, and she settled for a bogey to make the turn at 1-over. She would get that stroke right back at No. 1 with a birdie, then rolled off five more pars before running into trouble at No. 7. After an errant drive forced a layup, she hit her third shot into the hazard. But somehow, she was able to get up and down for bogey to minimize the damage. And once again, she fought right back for a birdie at No. 8 to get back to even par; a par at the ninth finished a strong day.

Senior Corrine Carr was the second-highest finisher for the Gamecocks, fighting her way to a closing 74 (+2) to finish at 217 (+1) overall, also a likely top-20 placement. Carr fought off bogeys at 12 and 13 by making back-to-back birdies at 14 and 15, then dropped another shot after a three-putt bogey at 16. She would hold on to par 17 and 18, then rolled off three more pars before bogeys at the windswept fourth and fifth holes. She would get one shot back with birdie at the seventh, then made two pars to close. Her 54-hole total of 217 equals a career-best, which previously came at the Mercedes-Benz Collegiate earlier this season.

Amanda Strang recovered from a tough 79 in Friday's second round to sign for a 73 (+1) Saturday, a six-shot improvement for the freshman. Standing 2-over after bogeys at 11 and 18, she finally got one stroke back with a birdie at the par-4 fifth. A bogey at No. 6 dropped her back to 2-over, then she made back-to-back birdies at the par-5 seventh and the lengthy par-3 eighth. However, a missed four-footer at nine kept her from level par as she finished 1-over for the day, 6-over for the week.

Taylor Barrett, the third senior on the Gamecock roster, was consistent throughout the week as she carded rounds of 76 (+4) all three days. A bogey-birdie start preceded six straight pars to keep her even as she came to the 18th. As with two of her teammates, she found rough going on the course's closing hole and made bogey to make the turn at 1-over. The wind got the best of her on the opening holes of the front nine as she made bogey on Nos. 1, 2 and 5, but recovered to post four straight pars to close a solid tournament.

South Carolina joined fellow SEC schools Tennessee, Auburn and Vanderbilt in advancing to the NCAA Championship, which runs May 18-21 at the Country Club of Landfall in Wilmington, N.C. Other schools advancing from the East Regional included Duke, Tulane, Pepperdine and TCU. Burnett's victory came by one shot over Auburn's Carlie Yadloczky, with Texas Tech's Rosalyn Kim earning the individual invitation to the NCAA Championships with her third-place finish at 4-under. First-round leader Nina Muehl of East Tennessee State tied for fourth place at 3-under with Tennessee freshman Erica Popson, the SEC runner-up.



**Head Coach Kalen Anderson, Taylor Barrett, Benedicte Toumpsin, Katie Burnett, Amanda Strang, Corrine Carr, Director of Golf Puggy Blackmon.**



**1993 - 7th of 18**  
**Santa Maria Golf Course**  
**May 13-15 • Baton Rouge, La.**  
**308-305-307=920**

Siew Ai Lim	71-78-75=224	10th
Clarissa Childs	82-76-72=230	29th
Kerry Zebick	76-77-79=232	34th
Rachel Bates	79-78-81=238	62nd
Tara Joy	82-74-84=240	71st

**1994 - 10th of 19**  
**Forest Akers Country Club**  
**May 12-14 • East Lansing, Mich.**  
**326-313-320=959**

Siew Ai Lim	75-75-77=227	6th
Rebekah Lee	82-80-79=241	T-42nd
Clarissa Childs	84-79-79=242	T-46th
Jill Darr	86-79-89=254	T-90th
Lea Bagwell	85-86-85=256	96th

**1995 - 4th of 19**  
**Quail Ridge Country Club**  
**May 11-13 • Memphis, Tenn.**  
**298-307-306=911**

Siew Ai Lim	73-71-70=214	1st
Clarissa Childs	79-76-78=233	T-46th
Rebekah Lee	73-80-82=235	T-57th
Julie Norris	75-80-82=237	T-67th
Karin Fries	77-84-76=237	T-67th

**1996 - T-5th of 19**  
**Grand National Lakes Course**  
**May 9-11 • Auburn, Ala.**  
**307-303-309=919**

Clarissa Childs	77-71-78=226	T-12th
Siew Ai Lim	76-75-77=228	T-18th
Rebekah Lee	77-75-81=233	T-32nd
Karin Fries	77-82-76=235	T-40th
Libby Howard	87-82-78=247	T-83rd

**1997 - 13th of 18**  
**Prairie Vista Golf Course**  
**May 8-10 • Normal, Ill.**  
**320-333-317=970**

Rebekah Lee	74-82-77=233	T-9th
C. Faaborg-Andersen	84-84-77=245	T-57th
Emma Lofgren	82-85-78=245	T-57th
Libby Howard	80-83-85=248	T-75th
Karin Fries	84-84-86=254	T-97th

**1999 - 7th of 19**  
**The University Club**  
**May 6-8 • Blythewood, S.C.**  
**299-302-307=908**

Cecilia Ekelundh	73-79-75=227	T-27th
Emma Lofgren	75-74-79=228	T-33rd
Lotte Moeller	79-70-79=228	T-33rd
Stefanie Reynolds	76-80-74=230	T-47th
Apryl Arrants	75-79-79=233	T-60th

**2000 - 18th of 24**  
**OSU Scarlet Course**  
**May 11-13 • Columbus, Ohio**  
**306-314-314=934**

Kristy McPherson	73-81-76=230	T-40th
Stefanie Reynolds	79-76-79=234	T-65th
Kacy Thompson	77-78-79=234	T-65th
Emma Lofgren	77-79-84=240	T-94th
Apryl Arrants	79-91-80=250	T-118th

**2001 - 6th of 21**  
**Finley Golf Course**  
**May 10-12 • Chapel Hill, N.C.**  
**305-293-306=904**

Kristy McPherson	73-69-72=214	3rd
Stefanie Reynolds	78-72-78=228	T-30th
Marci Robinson	75-75-78=228	T-30th
Sarah Kidd	80-77-85=242	T-70th
Kacy Thompson	79-88-78=245	T-73rd

**2002 - 6th of 21**  
**The University Club**  
**May 9-11 • Baton Rouge, La.**  
**298-293-298=889**

Adrienne Gautreaux	75-69-74=218	T-9th
Marci Robinson	74-74-76=224	T-41st
Kacy Thompson	78-74-73=225	T-45th
Kristy McPherson	75-76-75=226	T-54th
Reetta Laakkonen	74-77-80=231	T-70th

**2003 - 7th of 21**  
**Salem Glen Country Club**  
**May 8-10 • Clemmons, N.C.**  
**303-287-294=884**

Kristy McPherson	68-71-70=209	2nd
Adrienne Gautreaux	80-72-73=225	T-40th
Marci Robinson	81-70-76=227	T-54th
Kacy Thompson	80-74-75=229	T-64th
Tiffany Catafygiotu	75-82-76=233	T-79th

**2004 - 15th of 21**  
**Mission Inn Resort**  
**May 6-8 • Howey-In-The-Hills, Fla.**  
**303-287-294=884**

Adrienne Gautreaux	71-77-74=222	T-9th
Jenna Pearson	83-76-82=241	T-69th
Erica Battle	84-82-77=243	T-78th
Marci Robinson	79-85-81=245	T-83rd
Kory Thompson	83-85-84=252	T-92nd

**2005 - 9th of 21**  
**University of Florida Golf Course**  
**May 5-7 • Gainesville, Fla.**  
**293-307-303=903**

Jenna Pearson	70-77-72=219	14th
Whitney Simons	73-75-76=224	T-28th
Erica Battle	72-78-79=229	T-51st
Caroline Rominger	81-77-77=235	T-77th
Blythe Worley	78-81-78=237	T-81st

**2006 - 13th of 21**  
**Bryan Park Champions Course**  
**May 11-13 • Browns Summit, N.C.**  
**296-297-304=897**

Blythe Worley	75-74-73=222	34th
Laura Raffo	73-75-78=226	T-54th
Erica Battle	72-74-81=227	T-61st
Jenna Pearson	76-74-77=227	T-61st
Whitney Simons	76-80-76=232	T-86th

**2007 - T-9th of 21**  
**The University Club**  
**May 10-12 • Baton Rouge, La.**  
**290-289-295=875**

Bénédicte Toumpsin	72-73-72=217	T-26th
Camila Mori	73-72-73=218	T-36th
Blythe Worley	72-72-74=218	T-36th
Whitney Simons	73-73-76=222	T-56th
Jenna Pearson	73-72-78=223	T-59th

**2008 - T-6th of 21**  
**UGA Golf Course**  
**May 8-10 • Athens, Ga.**  
**291-303-305=899**

Bénédicte Toumpsin	68-70-76=214	1st
Camila Mori	74-76-75=225	T-24th
Blythe Worley	75-78-77=230	T-48th
Whitney Simons	78-79-77=234	T-68th
Taylor Barrett	74-80-81=235	T-68th

**2009 - 12th of 21**  
**Mark Bostick Golf Course**  
**May 7-9 • Gainesville, Fla.**  
**308-290-299=897**

Bénédicte Toumpsin	79-71-71=221	T-30th
Katie Burnett	75-72-75=222	T-34th
Corrine Carr	75-76-76=227	T-58th
Taylor Barrett	80-72-77=229	T-67th
Meredith Taylor	79-75-81=235	T-84th

**2010 - 1st of 24**  
**Ironwood Golf & Country Club**  
**May 6-8 • Greenville, N.C.**  
**283-291-290=864**

Katie Burnett	67-72-71=210	1st
Corrine Carr	72-71-74=217	T-13th
Bénédicte Toumpsin	74-72-72=218	T-19th
Amanda Strang	70-79-73=222	T-39th
Taylor Barrett	76-76-76=228	T-73rd



**1987 - T-14th of 17  
The Championship Course at UNM  
May 27-30 • Albuquerque, N.M.  
298-303-304-320=1225**

Marianne Morris	75-74-72-76=297	T-15th
Truie Timmons	74-77-78-78=307	T-60th
Kim Belk	74-76-77-83=310	T-73rd
Kelly Brannon	75-76-78-83=312	T-77th
Elizabeth Macfie	80-85-77-83=325	T-102nd

**1993 - 12th of 17  
UGA Golf Course  
May 26-29 • Athens, Ga.  
309-310-315-304=1238**

Tara Joy	79-79-77-73=308	T-41st
Rachel Bates	75-76-77-83=311	T-49th
Siew Ai Lim	77-77-82-76=312	T-53rd
Kerry Zebick	78-78-79-80=315	T-61st
Clarissa Childs	83-80-82-75=320	T-74th

**1995 - T-9th of 18  
Pete Dye Course at Landfall  
May 24-27 • Wilmington, N.C.  
299-300-297-308=1204**

Siew Ai Lim	74-73-73-73=293	T-9th
Clarissa Childs	71-75-74-76=296	T-14th
Rebekah Lee	77-74-75-80=306	T-44th
Karin Fries	77-78-75-81=311	T-67th
Katie Weiss	83-89-86-79=337	T-99th

**1996 - 14th of 18  
LaQuinta Dunes Golf Resort  
May 22-25 • Palm Springs, Calif.  
334-311-329-321=1295**

Siew Ai Lim	78-74-84-70=306	T-6th
Libby Howard	87-76-79-82=324	T-51st
Clarissa Childs	84-79-81-83=327	T-61st
Rebekah Lee	87-72-85-86=340	T-86th
Karin Fries	85-87-90-90=352	T-94th

**1999 - 14th of 19  
Tulsa Country Club  
May 19-22 • Tulsa, Okla.  
313-313-315=941**

Cecilia Ekelundh	78-76-77=231	T-35th
Emma Lofgren	79-77-80=236	T-57th
Apryl Arrants	76-78-83=237	T-63rd
Lotte Moeller	80-82-80=242	T-77th
Stefanie Reynolds	82-84-78=244	T-85th

**2001 - 24th of 24  
Mission Inn Resort  
May 22-25 • Howey-In-The-Hills, Fla.  
308-323-311-312=1254**

Kristy McPherson	75-83-72-73=303	T-44th
Marci Robinson	76-77-81-79=313	T-88th
Stefanie Reynolds	78-83-78-78=317	T-100th
Sarah Kidd	79-80-85-84=328	T-114th
Kacy Thompson	81-86-80-82=329	T-116th



*The 1995 Gamecocks posted the best NCAA Championship finish in school history, tying for ninth place as Siew Ai Lim and Clarissa Childs posted top-20 finishes.*

**2002 - 23rd of 24  
Univ. of Washington Golf Course  
May 21-24 • Auburn, Wash.  
298-298-308-313=1217**

Kristy McPherson	76-71-74-79=300	T-55th
Reetta Laakkonen	72-74-80-75=301	T-60th
Adrienne Gautreaux	74-75-78-81=308	T-95th
Kacy Thompson	76-78-77-78=309	T-99th
Marci Robinson	76-78-79-81=314	112th

**2003 - 17th of 24  
Birch Boilermaker Golf Course  
May 20-23 • West Lafayette, Ind.  
318-318-309-303=1248**

Kristy McPherson	79-78-75-73=305	T-39th
Adrienne Gautreaux	80-79-75-76=310	T-61st
Tiffany Catafygiotu	79-81-78-75=313	T-76th
Kacy Thompson	80-81-81-79=321	T-90th
Marci Robinson	85-80-81-82=328	T-115th

**2008 - 22nd of 24  
UNM Championship Course  
May 20-23 • Albuquerque, N.M.  
306-316-310-303=1235**

Camila Mori	78-73-76-74=301	T-41st
Bénédicte Toumpsin	76-79-76-72=303	T-48th
Blythe Worley	75-85-79-76=315	T-96th
Whitney Simons	77-83-79-82=321	T-114th
Taylor Barrett	84-81-82-81=328	T-122nd

**2010 - T-14th of 24  
Country Club of Landfall (Dye)  
May 18-21 • Wilmington, N.C.  
300-297-293-296=1186**

Katie Burnett	72-74-69-71=286	T-9th
Corrine Carr	76-75-76-71=298	T-54th
Bénédicte Toumpsin	77-75-72-77=301	T-67th
Amanda Strang	75-73-81-77=306	T-99th
Taylor Barrett	77-76-76-78=307	T-102nd

**Individual Gamecocks in  
NCAA Championships**

**May 28-31, 1986  
OSU Golf Course • Columbus, Ohio**  
Marianne Morris 76-76-78-75=305 38th

**May 23-26, 1990  
Arthur Hills GC • Hilton Head, S.C.**  
Debbie Eckroth 80-82-77-72=311 35th

**May 25-28, 1994  
Oregon Golf Club • Eugene, Ore.**  
Siew Ai Lim 75-74-79-80=308 20th

**May 21-24, 1997  
OSU Scarlet Course • Columbus, Ohio**  
Rebekah Lee 80-73-76-80=309 61st

**May 18-21, 2004  
Grand National Lake Course • Auburn, Ala.**  
Adrienne Gautreaux 72-78-70=293 22nd

**May 17-20, 2005  
Meadows Golf Course • Sunriver, Ore.**  
Jenna Pearson 79-79-72-73=303 60th





# 2002 SEC Champions

**South Carolina knocks off top-ranked Auburn by three strokes to claim first SEC crown; McPherson earns medalist honors for second-straight year.**

No. 25 South Carolina captured the women's golf program's first Southeastern Conference Championship behind a school-record three-day total of 861. The Gamecocks finished three shots ahead of Auburn after entering the final round tied with the top-ranked team.

While the Gamecocks were posting their first team title, junior All-American Kristy McPherson made it a clean sweep as she became just the second player in SEC women's golf history to win back-to-back individual titles. She carded a three-day 209 to win the title by two strokes over Vanderbilt's Nicki Cutler. McPherson continued her mastery of the SEC Tournament by posting her sixth-straight sub-par round in the event and, after opening last year's tournament with a five-under 67, has led each round in the SEC Championship over the last two seasons. The only other SEC women's golfer to earn back-to-back SEC individual titles was Florida's Deb Richard, who won three-consecutive crowns from 1982-84.

"I'm so proud of the ladies," said head coach Kristi Coggins. "They played with so much heart and fought until the final putt dropped. Our goal was to be in contention coming into the final round because we have played so well all spring on the last day.

The Gamecocks picked the right time to crush the previous school record for team tournament score, topping it by 23 strokes. The 861 was also three strokes better than the SEC Championship record of 864 set by Georgia at the 1988 event at Gulf Breeze, Fla. Prior to posting 290 or lower in all three rounds at the event, Carolina had turned in just four sub-300 rounds all season.

South Carolina shot its highest score of the tournament in the final round, but played a solid back nine to recapture the lead and hold on. USC stood at five-over par after the first nine holes and fell three strokes behind No. 9 Tennessee, which was eight-under at the turn. But the Lady Vols cooled down, and the Gamecocks played the back nine collectively at three-under to win the title. Carolina handed Auburn its fifth second-place showing on the year to go along with its five tournament victories. Tennessee finished third, five shots off the pace.

In the individual competition, McPherson got a scare from Vanderbilt's Nicki Cutler, who finished before her and was in the clubhouse with a five-under 211 after a final-



Head coach Kristi Coggins, Adrienne Gautreaux, Marci Robinson, Kristy McPherson, Reeta Laakkonen, Kacy Thompson and assistant coach Clarissa Childs.

round 67. Tied with Cutler entering the final six holes, McPherson carded three birdies down the stretch and earned the win. Her 209 was the second-best individual three-round score in SEC Tournament history, two strokes off the previous record of 207, which she shot in 2001.

"Every putt ... every shot ... all I wanted to do was make it for the team," McPherson said. "Winning the individual title) this year is so much better because the team won. It was awesome last year - don't get me wrong - but I get to share it with the team this season. I was thinking about team honors all weekend, and it just so happened that the individual victory came around."

Junior Kacy Thompson of Columbia fell from fourth to 15th place with a final-round 79 (219 total). Junior Adrienne Gautreaux had a three-over 75 on the last day and finished tied for 17th place at 222. Reetta Laakkonen had a three-day total of 223 and finished tied for 18th place, thanks to second- and third-round 71s, which tied her lowest career rounds. Sophomore Marci Robinson had a one-over 73 in the last round and tied for 22nd place.

## 2002 SEC Championship

Univ. of Georgia Golf Course :: Par 72 :: 6,104 yards

### Team Standings

1. South Carolina	289-282-290=861
2. Auburn	280-291-293=864
3. Tennessee	295-282-289=866
4. Vanderbilt	300-294-281=875
5. Georgia	298-302-288=888
6. Florida	298-295-304=897
7. Alabama	305-306-307=918
8. LSU	303-313-305=921
9. Mississippi State	317-310-302=929
Ole Miss	310-314-305=929
11. Arkansas	320-301-313=934
12. Kentucky	312-317-315=944

### Individual Top 25

1. Kristy McPherson (S. Car.)	69-69-71=209 (-7)
2. Nicki Cutler (Vanderbilt)	72-72-67=211 (-5)
3. Celeste Troche (Auburn)	70-71-71=212 (-4)
Young-A Yang (Tennessee)	69-72-71=212 (-4)
5. Meredith Duncan (LSU)	69-75-71=215 (-1)
Mary Jan Fernandez (Tenn.)	77-66-72=215 (-1)
Tina Schneeberger (Tenn.)	71-71-73=215 (-1)
8. Danielle Downey (Auburn)	69-76-72=217 (+1)
9. Angela Jerman (Georgia)	74-74-70=218 (+2)
10. Sarah Jacobs (Vanderbilt)	76-71-72=219 (+3)
Diana Ramage (Auburn)	70-75-74=219 (+3)
Summer Simons (Georgia)	73-75-71=219 (+3)
Courtney Swaim (Auburn)	71-72-76=219 (+3)
14. Sarah Johnston (Alabama)	75-72-73=220 (+4)
15. Kacy Thompson (S. Carolina)	72-70-79=221 (+5)
Courtney Wood (Vanderbilt)	78-75-68=221 (+5)
17. Adrienne Gautreaux (S. Car.)	75-72-75=222 (+6)
18. Jeanne Cho (Florida)	76-75-72=223 (+7)
Whitney Code (Florida)	70-73-80=223 (+7)
Elizabeth Hoffman (Ole Miss)	76-76-71=223 (+7)
Reetta Laakkonen (S. Carolina)	81-71-71=223 (+7)
22. Natalia Nicholls (Georgia)	76-75-74=225 (+9)
Marci Robinson (S. Carolina)	73-79-73=225 (+9)
Brittany Straza (Florida)	76-74-75=225 (+9)
Meredith Ward (Vanderbilt)	74-77-74=225 (+9)





**Metro  
Conference**



**1988-91**

**1988 - 2nd of 4  
Sandestin Resort  
May 4-6 • Destin, Fla.  
315-312-304=931**

Elizabeth Macfie	75-77-75=227	3rd
Kim Belk	79-78-77=234	6th
Liz Galbraith	82-78-75=235	T-7th
Cathy Rumpfelt	84-79-77=240	T-9th
Aileen Robertson	79-85-82=246	14th

**1989 - 2nd of 4  
Sandestin Resort  
May 5-7 • Destin, Fla.  
308-307-304=919**

Debbie Eckroth	78-72-72=222	1st
Kim Belk	74-73-79=226	3rd
Cathy Rumpfelt	79-80-76=235	T-8th
Aileen Robertson	77-82-77=236	10th
Vikki Valentine	84-84-80=248	13th

**1990 - 1st of 5  
Sandestin Resort  
May 4-6 • Destin, Fla.  
304-310-304=918**

Aileen Robertson	75-77-73=225	2nd
Vikki Valentine	74-77-77=228	4th
Debbie Eckroth	77-78-75=230	5th
Sofia Gervas	78-78-79=235	8th
Cathy Rumpfelt	85-79-80=244	11th

**1991 - 3rd of 5  
Sandestin Resort  
April 27-28 • Destin, Fla.  
313-333=646**

Debbie Eckroth	77-82=159	9th
Aileen Robertson	79-81=160	10th
Rachel Bates	77-86=163	11th
Vikki Valentine	80-84=164	12th
Sofia Gervas	84-86=170	16th

**Southeastern  
Conference**



**1992-present**

**1992 - 3rd of 10  
Santa Maria Golf Course  
May 11-13 • Baton Rouge, La.  
304-304-304=912**

Vikki Valentine	76-74-72=222	5th
Lea Bagwell	76-75-76=227	11th
Debbie Eckroth	79-74-78=231	T-16th
Margaret Hickey	73-81-78=232	18th
Rachel Bates	84-86-78=248	T-42nd

**1993 - 3rd of 11  
Colonial Country Club  
April 30-May 2 • Jackson, Miss.  
301-315=616**

Rachel Bates	75-79=154	T-11th
Clarissa Childs	72-82=154	T-11th
Siew Ai Lim	76-80=156	T-15th
Tara Joy	81-76=157	T-18th
Kerry Zebick	78-80=158	T-21st

**1994 - 5th of 11  
Old Waverly Golf Club  
April 29-May 1 • West Point, Miss.  
291-292-321=904**

Lea Bagwell	73-73-78=224	T-7th
Siew Ai Lim	71-72-81=224	T-7th
Rebekah Lee	75-73-78=226	T-12th
Clarissa Childs	72-74-84=230	T-20th
Jill Darr	83-80-86=249	T-50th

**1995 - 2nd of 11  
Legends Club of Tennessee  
April 21-23 • Franklin, Tenn.  
310-303-308=921**

Clarissa Childs	76-72-77=225	T-3rd
Siew Ai Lim	81-73-73=227	5th
Rebekah Lee	83-75-76=234	T-12th
Karin Fries	74-83-83=240	25th
Julie Norris	79-85-82=246	T-37th

**1996 - T-3rd of 12  
Willow Creek Golf Club  
April 19-21 • Knoxville, Tenn.  
310-300=610**

Siew Ai Lim	74-72=146	T-2nd
Rebekah Lee	78-76=154	T-11th
Clarissa Childs	78-78=156	T-22nd
Libby Howard	80-76=156	T-22nd
Karin Fries	84-76=160	T-32nd

**1997 - 4th of 12  
The University Club  
April 18-20 • Blythewood, S.C.  
317-294-299=910**

C. Faaborg-Andersen	80-74-71=225	T-6th
Rebekah Lee	78-72-75=225	T-6th
Libby Howard	79-74-75=228	T-14th
Karin Fries	85-75-78=238	T-35th
Emma Lofgren	80-74-85=239	T-38th

**1998 - 8th of 12  
Riverchase Country Club  
April 17-19 • Tuscaloosa, Ala.  
318-312-303=933**

Lotte Moeller	77-74-75=226	11th
Emma Lofgren	81-80-72=233	T-27th
Apryl Arrants	77-80-78=235	29th
Libby Howard	84-78-78=240	T-43rd
Abby Derman	83-84-84=251	T-56th

**1999 - 10th of 12  
Grand National Lake Course  
April 16-18 • Opelika, Ala.  
318-314-320=952**

Cecilia Ekelundh	77-73-80=230	T-9th
Emma Lofgren	78-79-80=237	T-27th
Stefanie Reynolds	80-80-78=238	T-32nd
Lotte Moeller	83-82-83=248	T-46th
Apryl Arrants	84-83-82=249	51st



*Kristy McPherson won the 2001 and 2002 SEC Championships, becoming just the second two-time medalist in SEC Championship history.*



**2000 - 8th of 12  
Pinnacle Country Club  
April 21-23 • Rogers, Ark.  
314-326-319=959**

Kristy McPherson	77-79-74=230	T-11th
Apryl Arrants	80-82-81=243	T-37th
Emma Lofgren	79-86-79=244	T-41st
Stefanie Reynolds	78-84-85=247	T-45th
Kacy Thompson	86-81-85=252	T-52nd

**2001 - T-3rd of 12  
Univ. of Florida Golf Course  
April 20-22 • Gainesville, Fla.  
295-290-302=887**

Kristy McPherson	67-70-70=207	1st
Sarah Kidd	75-74-77=226	T-20th
Marci Robinson	75-73-78=226	T-20th
Stefanie Reynolds	78-73-77=228	T-26th
Kacy Thompson	86-77-81=244	T-51st

**2002 - 1st of 12  
UGA Golf Course  
April 19-21 • Athens, Ga.  
289-282-290=861**

Kristy McPherson	69-69-71=209	1st
Kacy Thompson	72-70-79=221	T-15th
Adrienne Gautreaux	75-72-75=222	T-17th
Reetta Laakkonen	81-71-71=223	T-18th
Marci Robinson	73-79-73=225	T-22nd

**2003 - 4th of 12  
University Club  
April 18-20 • Lexington, Ky.  
295-308-311=914**

Kristy McPherson	68-71-81=220	3rd
Adrienne Gautreaux	73-77-74=224	T-8th
Marci Robinson	84-80-73=237	T-29th
Kacy Thompson	76-80-85=241	T-38th
Tiffany Catafygiotu	78-82-83=243	T-42nd

**2004 - 7th of 12  
UGA Golf Course  
April 16-18 • Athens, Ga.  
303-300-296=899**

Erica Battle	79-74-71=224	T-20th
Adrienne Gautreaux	75-74-75=224	T-20th
Marci Robinson	73-77-75=225	T-26th
Jenna Pearson	76-75-76=227	T-31st
Kory Thompson	79-80-75=234	T-42nd

**2005 - 7th of 12  
Tunica National Golf Course  
April 15-17 • Tunica, Miss.  
313-301-300=914**

Whitney Simons	76-73-78=227	T-12th
Erica Battle	80-78-70=228	T-15th
Caroline Rominger	79-76-73=228	T-15th
Jenna Pearson	78-74-82=234	T-34th
Tiffany Catafygiotu	80-83-79=242	T-51st

**2006 - 8th of 12  
Vanderbilt Legends Club  
April 14-16 • Franklin, Tenn.  
310-293-300=903**

Jenna Pearson	75-74-72=221	T-7th
Whitney Simons	75-73-75=223	T-16th
Erica Battle	79-73-78=230	T-35th
Blythe Worley	84-73-75=232	T-41st
Laura Raffo	81-81-78=240	T-53rd

**2007 - 4th of 12  
Old Waverly Golf Club  
April 20-22 • West Point, Miss.  
295-289-303=887**

Jenna Pearson	74-66-77=217	T-5th
Blythe Worley	70-74-76=220	10th
Camila Mori	76-70-77=223	T-18th
Benedicte Toumpsin	75-79-73=227	T-25th
Whitney Simons	81-81-77=239	T-49th

**2008 - 5th of 12  
Tennessee National  
April 18-20 • Loudon, Tenn.  
300-319-296=915**

Benedicte Toumpsin	72-72-72=216	3rd
Taylor Barrett	76-79-71=226	14th
Camila Mori	78-84-75=237	T-36th
Blythe Worley	77-84-80=241	T-46th
Whitney Simons	75-DQ-78	DQ

**2009 - 9th of 12  
Cobblestone Park Golf Club  
April 17-19 • Blythewood, S.C.  
299-300-298=897**

Bénédicte Toumpsin	72-69-73=213	2nd
Katie Burnett	74-78-74=226	T-32nd
Corrine Carr	73-77-76=226	T-32nd
Taylor Barrett	80-78-75=233	44th
Cayci Ruppe	82-76-84=242	57th

**2010 - 7th of 12  
NorthRiver Yacht Club  
April 16-18 • Tuscaloosa, Ala.  
289-290-288=867**

Katie Burnett	72-70-72=214	15th
Benedicte Toumpsin	68-72-77=217	20th
Corrine Carr	76-75-67=218	T-21st
Amanda Strang	74-74-72=220	T-28th
Taylor Barrett	75-74-78=227	T-44th



*The Gamecocks' home course of Cobblestone Park played host to the SEC Women's Championship in 1997 and 2009.*



**1980-81**

**Head Coach: Bobby Foster**

1980-81	Purdue Invitational (Fall)	317-298-615	1 of 9
1980-81	Duke Fall Invitational	321	2 of 12
1980-81	Lady Tar Heel Invitational (Fall)	326-302-321=949	4 of 27
9/22-24	Lady Seminole Invitational	313-321-308=942	10 of 17
10/13-15	Georgia Invitational	346-344-325=1015	10 of 22
3/6-8	Tiger-Tide Invitational	337-324-318=979	4 of 13
3/20-22	Duke Spring Invitational	311-322-329=962	2 of 18
3/26-28	Lady Paladin Invitational	306-318-305=929	10 of 23
4/3-5	Lady Gamecock Invitational	306-307-312=925	1 of 5
4/6-7	Wake Forest-Appalachian St.-S. Carolina	326-312=638	1 of 3
4/13-15	Lady Kat Invitational	325-315-319=959	6 of 18
4/17-18	Marshall Invitational	315-320=635	3 of 11
6/17-20	AIAW Invitational	311-331-305-320=1267	16 of 25

**1981-82**

**Head Coach: Bobby Foster**

1981-82	Lady Gator Invitational	316-316-304=936	10 of 15
1981-82	Memphis State Invitational (Fall)	314-311-318=943	7 of 15
9/18-20	Lady Seminole Invitational	961	13 of 17
10/1-2	Dick McGuire Tournament	316-318-315=949	14 of 24
2/28-3/2	Peggy Kirk Bell Invitational	Scores Unavailable	NA
3/8-10	NC State Invitational	Scores Unavailable	NA
3/25-27	Lady Paladin Invitational	310-324-314=948	12 of 21
4/9-22	Lady Gamecock Invitational	295-293-309=897	1 of 12
4/23-25	Duke Spring Invitational	319-314-316=949	2
4/30-5/2	Women's Southern Intercollegiate	Scores Unavailable	NA

**1982-83**

**Head Coach: Jeff Howell**

1982-83	University of Alabama Tournament	308-324=632	6
2/11-12	Lady Gator Invitational	656	14 of 18
1982-83	Peggy Kirk Bell Invitational (Spring)	990	13 of 17
1982-83	Azalea Invitational (Spring)	967	3 of 8
1982-83	Duke Spring Invitational	1009	11 of 15
4/29-5/1	Women's Southern Invitational	1007	16 of 17

**1983-84**

**Head Coach: Donna Noonan**

9/25-27	Lady Seminole Classic	308-318-319=945	12 of 16
10/7-9	Duke Invitational	312-321-306=939	5 of 12
10/15-17	Lady Kat Invitational	316-313=629	4 of 15
10/21-23	Lady Tar Heel Tournament	322-315=637	7 of 19
11/6-8	Alabama Seascape Tournament	340-336-323=999	14 of 18
11/13-15	Pat Bradley Invitational Tournament	338-331-336=1005	16 of 17
2/24-26	Lady Gator Invitational	322-331-332=985	16 of 17
3/9-11	Lady Trojan Invitational	336-327-336=999	11 of 18
3/22-24	Lady Paladin	Scores Unavailable	13 of 20
4/6-8	Duke Spring Invitational	318-316-312=946	3 of 15
4/15-17	Fall Creek Falls Cancelled Classic	318-344-316=978	8 of 11
4/27-29	Women's Southern Intercollegiate	321-325-315=961	9 of 17

**1984-85**

**Head Coach: Donna Noonan**

9/23-25	Lady Seminole Classic	307-309-309=925	11 of 17
10/8-9	Lady Tiger Invitational	320-319=639	5 of 18
10/15-17	Lady Kat Invitational	312-319-322=953	11 of 17
10/26-28	Lady Tar Heel Tournament	320-317-310=947	9 of 14
11/3-5	Alabama Seascape Tournament	304-319=623	4 of 18
1/25-27	OSU/Guadalajara Invitational	309-324-326=959	14 of 16
2/22-24	Lady Gator Invitational	321-314-307=942	12 of 15
3/8-10	Hudson Industries Invitational	313-311-314=938	10 of 23
3/21-23	Lady Paladin Invitational	316-341-320=977	12 of 23
3/29-31	South Carolina Women's Invitational	313-304-307=924	1 of 14
4/26-28	Women's Southern Intercollegiate	319-319-324=962	13 of 16

**1985-86**

**Head Coach: Donna Noonan**

9/20-22	Lady Seminole Classic	315-299-309=923	9 of 19
10/6-8	Memphis Women's Intercollegiate	308-313-310=931	2 of 17
10/25-27	Lady Tar Heel Invitational	307-311-302=920	5 of 14
11/1-3	Ford Collegiate Invitational	312-316-316=944	6 of 12
1/26-28	OSU/Guadalajara Invitational	320-312-295=927	9 of 15
3/9-10	Hudson Industries Invitational	312-306-313=931	4 of 21
3/20-22	Lady Paladin Invitational	324-329-317=970	9 of 14

3/28-30	South Carolina Women's Invitational	308-306-303=917	2 of 13
4/11-13	TPC Invitational	297-311-296=904	3 of 7
4/25-27	Women's Southern Intercollegiate	320-312-319=951	10 of 16

**1986-87**

**Head Coach: Donna Noonan**

9/19-21	Ford Collegiate Invitational	306-313-301=920	2 of 12
9/26-28	Lady Seminole Invitational	311-305-318=934	4 of 17
10/5-7	Memphis Women's Intercollegiate	302-309-310=921	3 of 15
10/24-26	Lady Tar Heel Tournament	300-322-305=927	6 of 16
11/17-19	U.S. International Invitational	303-309-312=924	5 of 15
2/27-28	LSU Intercollegiate	311-308=619	2 of 15
3/6-8	Hudson Industries Invitational	296-316-307=919	1 of 14
3/27-29	South Carolina Women's Invitational	305-304-301=910	2 of 12
4/17-19	Woodbridge Collegiate	291-300-299=890	1 of 10
4/24-26	Women's Southern Intercollegiate	312-309-306=927	2 of 17
5/27-30	NCAA Championship	298-303-304-320=1225	14 of 17

**1987-88**

**Head Coach: Linda Mescan**

9/25-27	Lady Seminole Invitational	318-320-314=952	7 of 19
10/4-6	Memphis Women's Intercollegiate	955	6 of 16
10/23-25	Lady Tar Heel Invitational	328-327-331=986	13 of 18
11/23-25	UCLA Desert Classic	315-305-346=966	14 of 15
3/4-6	Hudson Industries Invitational	310-309-314=933	5 of 14
3/25-27	South Carolina Women's Invitational	318-318-326=962	6 of 15
4/8-10	Lady Mustang Roundup	330-334-362=1026	12 of 12
4/15-17	Woodbridge Collegiate	312-304-327=943	8 of 10
4/22-24	Women's Southern Intercollegiate	314-328-312=954	10 of 16
5/6-8	Metro Conference Championship	315-312-304=931	2 of 4

**1988-89**

**Head Coach: Linda Mescan**

9/16-18	Lady Tar Heel Invitational	321-335-320=976	11 of 17
9/23-25	Lady Seminole Invitational	303-317-318=939	4 of 15
10/2-4	Memphis Women's Invitational	314-314-319=947	5 of 17
10/21-23	Lady Lion Invitational	317-315-313=945	1 of 10
10/30-11/1	Pat Bradley Championship	322-328-317=967	12 of 17
3/3-5	Hudson Industries Invitational	328-311-326=965	9 of 18
3/24-26	South Carolina Women's Invitational	316-314-319=949	7 of 13
3/31-4/1	Duke Invitational	326-325-317=966	11 of 19
4/14-16	Woodbridge Collegiate Invitational	331-316-325=972	8 of 9
5/5-7	Metro Conference Championship	308-307-304=919	2 of 4

**1989-90**

**Head Coach: Linda Mescan**

9/18-19	Lady Tar Heel Invitational	307-312-307=926	5 of 16
9/22-24	Duke Classic	317-314-313=944	2 of 5
10/1-3	Memphis Women's Invitational	311-312-303=926	4 of 15
10/27-29	Tiger Tide Invitational	318-314-302=929	11 of 20
11/12-14	Pat Bradley Championship	337-327-327=991	11 of 18
1/19-20	Guadalajara Intercollegiate	316-323-312=951	5 of 15
3/3-5	Hudson Industries Invitational	315-318-319=953	2 of 10
3/23-25	South Carolina Women's Invitational	313-304-310=927	3 of 14
3/30-10/2	Memphis Women's Invitational	321-307-316=944	6 of 15
4/7-8	Furman Invitational	327-325-324=972	5 of 11
4/20-22	Woodbridge Invitational	314-305-318=937	4 of 10
5/4-6	Metro Conference Championship	304-310-304=918	1 of 5

**1990-91**

**Head Coach: Linda Mescan**

9/7-9	Lady Tar Heel Invitational	306-304-300=910	4 of 17
9/21-23	James Madison Invitational	305-297-314=916	1 of 10
11/3-5	Tiger Tide Intercollegiate	325-322-325=972	13 of 19
3/1-3	Alabama Invitational	312-300=612	1 of 8
3/29-31	South Carolina Women's Invitational	307-312-308=927	2 of 13
4/6-7	Lady Paladin Tournament	316-310-304=930	5 of 9
4/19-21	Woodbridge Invitational	318-313-312=943	4 of 9
4/26-28	Metro Conference Championship	313-333=646	3 of 5

**1991-92**

**Head Coach: Kim Erickson**

9/7-9	Lady Tar Heel Invitational	311-307-310=928	7 of 18
9/16-17	Lady Kat Invitational	306-309-320=935	5 of 8
9/29-10/1	Memphis Women's Intercollegiate	314-314-312=940	1 of 14
10/18-20	Lady Paladin Invitational	309-302-316=927	5 of 15



3/8-10	Alabama Invitational.....	306-317-308=931.....	2 of 10
3/27-29	South Carolina Women's Invitational.....	318-305-320=943.....	5 of 14
4/10-12	Woodbridge Invitational.....	313-306-299=918.....	7 of 10
4/17-19	Women's Southern Intercollegiate.....	313-306-320=939.....	4 of 17
5/11-13	SEC Championship.....	304-304-304=912.....	3 of 10

**1992-93** *Head Coach: Kim Erickson*

9/11-13	Lady Tar Heel Invitational.....	315-304-296=915.....	4 of 17
9/27-29	Memphis Intercollegiate.....	318-318-332=968.....	5 of 17
10/9-11	Lady Kat Invitational.....	320-307-303=930.....	5 of 18
10/16-18	Lady Paladin Intercollegiate.....	310-304-314=928.....	4 of 9
11/13-15	Carolyn Cudone Intercollegiate.....	326-325-325=976.....	7 of 15
2/22-23	Arizona Invitational.....	299-312-307=918.....	6 of 14
3/26-28	Lady Gamecock Classic.....	311-300-299=910.....	2 of 18
4/16-18	Women's Southern Intercollegiate.....	336-331-318=985.....	11 of 19
4/30-5/2	SEC Championship.....	301-315-616.....	3 of 11
5/13-15	NCAA East Regional.....	308-305-307=920.....	7 of 18
5/26-29	NCAA Championship.....	309-310-315-304=1238.....	12 of 17

**1993-94** *Head Coach: Kim Erickson*

9/10-12	Lady Tar Heel Invitational.....	312-326-310=948.....	6 of 18
10/8-10	Lady Kat Invitational.....	312-309-321=945.....	6 of 14
10/22-24	Lady Paladin Tournament.....	316-309-313=938.....	6 of 14
11/12-14	Carolyn Cudone Intercollegiate.....	305-311-294=910.....	1 of 16
2/21-23	Chris Johnson Arizona Invitational.....	319-309-317=945.....	15 of 19
3/13-15	Spalding/Peggy Bell Invitational.....	319-309-308=936.....	2 of 18
3/25-27	Lady Gamecock Classic.....	318-306-315=939.....	8 of 14
4/15-17	Women's Southern Intercollegiate.....	315-324-319=958.....	7 of 20
4/29-5/1	SEC Championship.....	291-292-321=904.....	5 of 11
5/12-14	NCAA East Regional.....	326-313-320=959.....	10 of 19

**1994-95** *Head Coach: Kristi Coggins*

9/30-10/2	Lady Tar Heel Invitational.....	312-311-304=927.....	4 of 15
10/22-23	Lady Paladin Invitational.....	307-308-308=923.....	11 of 23
11/4-6	Carolyn Cudone Intercollegiate.....	295-307-305=907.....	6 of 12
11/11-13	National Collegiate Tournament.....	318-310-313=941.....	3 of 22
2/20-22	Chris Johnson Invitational.....	317-301-302=920.....	2 of 19
3/3-5	Lady Gator Invitational.....	314-304-317=935.....	5 of 13
3/24-26	Lady Gamecock Classic.....	303-306-307=916.....	5 of 15
4/14-16	Liz Murphey Collegiate.....	313-305-316=934.....	3 of 15
4/21-23	SEC Championships.....	310-303-308=921.....	2 of 11
5/11-13	NCAA East Regional.....	298-307-306=911.....	4 of 19
5/24-27	NCAA Championship.....	299-300-297-308=1204.....	9 of 18

**1995-96** *Head Coach: Kristi Coggins*

9/15-17	Rolex NCAA Preview.....	322-307-305=934.....	14 of 19
9/28-30	Dick McGuire Invitational.....	307-307-302=916.....	5 of 18
10/20-22	Lady Paladin Invitational.....	311-314-301=926.....	7 of 23
11/10-12	Golf World Invitational.....	305-305-318=928.....	9 of 12
2/26-28	Conquistadores Intercollegiate.....	319-312-298=929.....	14 of 21
3/8-10	Fripp Island Intercollegiate.....	321-340=625.....	2 of 24
3/22-24	Lady Gamecock Classic.....	308-302-294=904.....	3 of 17
4/12-14	Liz Murphey Collegiate Classic.....	311-307-310=928.....	9 of 22
4/19-21	SEC Championship.....	310-300=610.....	3 of 12
5/9-11	NCAA East Regional.....	307-303-309=919.....	5 of 19
5/22-25	NCAA Championship.....	334-311-329-321=1295.....	14 of 18

**1996-97** *Head Coach: Kristi Coggins*

9/19-21	Dick McGuire Invitational.....	312-321-316=949.....	14 of 18
10/4-9	Rolex NCAA Preview.....	329-325-330=984.....	19 of 21
10/18-20	Lady Paladin Invitational.....	322-314-309=945.....	13 of 21
2/9-11	Miami Preview Classic.....	303-313-320=936.....	1 of 17
3/1-2	Lady Gator Invitational.....	306-299-315=920.....	5 of 15
3/7-9	Fripp Island Invitational.....	310-316-316=942.....	5 of 17
3/22-24	Lady Gamecock Classic.....	315-308-310=933.....	11 of 19
4/11-13	Liz Murphey Collegiate Classic.....	320-310-315=945.....	8 of 19
4/18-20	SEC Championship.....	317-294-299=910.....	4 of 12
5/8-10	NCAA East Regional.....	320-333-317=970.....	13 of 18

**1997-98** *Head Coach: Kristi Coggins*

9/12-14	Lady Seminole Invitational.....	332-315-314=961.....	12 of 14
9/26-28	Mercedes-Benz Intercollegiate.....	335-325-324=984.....	17 of 18
10/17-19	Lady Paladin Invitational.....	324-320-326=970.....	14 of 21
2/27-3/1	Lady Gator Invitational.....	309-307-307=923.....	13 of 19
3/6-8	Fripp Island Invitational.....	316-315-312=943.....	3 of 18
3/20-22	Lady Gamecock Classic.....	310-315-315=940.....	5 of 12
3/27-29	Bryan Cup Invitational.....	314-314-320=948.....	11 of 15
4/10-12	Liz Murphey Collegiate Classic.....	331-318-319=968.....	13 of 17
4/17-19	SEC Championship.....	318-312-303=933.....	8 of 12

**1998-99** *Head Coach: Kristi Coggins*

9/18-20	Lady Seminole Invitational.....	296-302-293=891.....	5 of 21
9/25-27	Lady Tar Heel Invitational.....	303-300-299=902.....	3 of 17
10/16-18	Mercedes-Benz Intercollegiate.....	323-306-315=944.....	13 of 17
10/23-25	Lady Paladin Invitational.....	314-307-300=921.....	4 of 18
2/26-27	Lady Gator Invitational.....	311-304=615.....	3 of 19
3/12-13	Casa De Campo Invitational.....	317-312-309=938.....	1 of 13
3/19-21	Lady Gamecock Classic.....	300-296=596.....	2 of 16
4/2-4	Liz Murphey Intercollegiate.....	313-315-310=938.....	10 of 18
4/16-18	SEC Championship.....	318-314-320=952.....	10 of 12
5/6-8	NCAA East Regional.....	299-302-307=908.....	7 of 19
5/19-22	NCAA Championship.....	313-313-315=941.....	14 of 19

**1999-2000** *Head Coach: Kristi Coggins*

9/12-15	NCAA Preview.....	322-309-298=929.....	13 of 20
10/8-10	Lady Tar Heel Invitational.....	313-315-302=930.....	4 of 15
10/15-17	Mercedes-Benz Invitational.....	300-300-311=911.....	4 of 18
10/29-31	Lady Paladin Invitational.....	311-304-302=917.....	5 of 24
2/7-9	SMU/OSU Regional Challenge.....	314-308-316=938.....	17 of 18
2/25-27	Lady Gator Invitational.....	313-301-305=919.....	2 of 15
3/17-19	Lady Gamecock Classic.....	317-320-300=937.....	3 of 11
3/31-4/2	Liz Murphey Collegiate.....	310-302-310=922.....	6 of 17
4/21-23	SEC Championship.....	314-326-319=959.....	9 of 12
5/11-13	NCAA East Regional.....	306-314-314=934.....	18 of 24

**2000-01** *Head Coach: Kristi Coggins*

9/29-10/1	ACC/SEC Shootout.....	316-305-309=930.....	4 of 12
10/6-8	Lady Tar Heel Invitational.....	308-317-321=946.....	9 of 17
10/20-22	Lady Paladin Invitational.....	296-296-292=884.....	2 of 22
2/12-14	TRW Regional Challenge.....	313-319-307=939.....	13 of 18
2/23-25	Lady Gator Invitational.....	309-304-302=915.....	10 of 17
3/16-18	Lady Gamecock Classic.....	309-311-316=936.....	5 of 11
3/30-4/1	Liz Murphey Classic.....	321-320-320=961.....	12 of 18
4/6-8	Bryan National Collegiate.....	303-313-308=924.....	12 of 18
4/20-22	SEC Championship.....	295-290-302=887.....	3 of 12
5/10-12	NCAA East Regional.....	305-293-306=904.....	6 of 21
5/22-25	NCAA Championship.....	308-323-311-312=1254.....	24 of 24

**2001-02** *Head Coach: Kristi Coggins*

9/29-10/1	ACC/SEC Shootout.....	299-302-306=907.....	4 of 11
10/12-14	Mercedes-Benz Championship.....	318-310-334=962.....	13 of 14
10/26-28	Lady Paladin Invitational.....	325-310-304=939.....	14 of 21
2/22-24	Lady Gator Invitational.....	316-305-309=930.....	2 of 15
3/4-6	Spartan Invitational.....	302-309-302=913.....	10 of 16
3/15-17	Lady Gamecock Classic.....	295-300-300=895.....	3 of 15
3/22-24	Liz Murphey Collegiate Classic.....	305-299-298=902.....	4 of 18
4/5-7	LSU/Cleveland Classic.....	303-306-302=911.....	3 of 13
4/19-21	SEC Championship.....	289-282-290=861.....	1 of 12
5/9-11	NCAA East Regional.....	298-293-298=889.....	6 of 21
5/21-24	NCAA Championship.....	298-298-308-313=1217.....	23 of 24

**2002-03** *Head Coach: Kristi Coggins*

9/15-17	NCAA Fall Preview.....	312-318-301=931.....	15 of 18
10/4-6	Tar Heel Invitational.....	300-299-303=902.....	8 of 15
10/25-27	Lady Paladin Invitational.....	300-291-291=884.....	2 of 16
11/1-3	Auburn Tiger Derby Invitational.....	299-300-301=900.....	8 of 13
2/28-3/1	Lady Puerto Rico Classic.....	303-302-303=908.....	7 of 15
3/14	Lady Gamecock Classic.....	302.....	4 of 15
3/28-30	Bryan National Tournament.....	294-307=601.....	6 of 18



4/18-20	SEC Championship.....	295-308-311=914.....	4 of 12
5/8-10	NCAA East Regional.....	303-287-294=884.....	7 of 21
5/20-23	NCAA Championship.....	318-318-309-303=1248.....	17 of 24

**2003-04** *Head Coach: Kristi Coggins*

9/9-11	TOPY Cup of Japan.....	307-301-317=925.....	3 of 5
9/26-28	Mason Rudolph Championships.....	305-303-304=912.....	11 of 17
10/19-21	Mercedes Benz Collegiate Champs.....	304-307-315=926.....	12 of 16
2/9-11	Northrop Grumman Regional Challenge ..	302-333-317=952.....	15 of 15
3/5-7	LSU/Cleveland Classic.....	305-321-302=928.....	7 of 17
3/12-14	Lady Gamecock Classic.....	298-309-307=914.....	2 of 11
3/26-28	Liz Murphey Collegiate Classic.....	311-312-293=916.....	11 of 18
4/2-4	Bryan National Collegiate.....	310-300-318=928.....	14 of 18
4/16-18	SEC Championship.....	303-300-296=899.....	7 of 12
5/6-8	NCAA East Regional.....	316-320-314=950.....	15 of 21

**2004-05** *Head Coach: Kristi Coggins*

9/20-22	NCAA Fall Preview.....	303-302-298=903.....	17 of 21
10/1-3	Mason Rudolph Championship.....	312-310-302=924.....	17 of 18
10/8-10	Franklin Street Partners Invitational.....	315-313-305=933.....	7 of 9
10/29-31	ACC/SEC Challenge.....	297-299-300=895.....	7 of 16
3/4-6	Sun Trust Lady Gator Invitational.....	309-310-310=929.....	9 of 18
3/11-13	Lady Gamecock Classic.....	313-315-319=947.....	4 of 12
3/25-27	Liz Murphey Collegiate Classic.....	313-310-322=945.....	14 of 18
4/1-3	Bryan National Collegiate.....	310-321-329=950.....	15 of 17
4/15-17	SEC Championship.....	313-301-300=914.....	7 of 12
5/5-7	NCAA East Regional.....	293-307-303=903.....	9 of 21

**2005-06** *Head Coach: Kristi Coggins*

9/26-28	Branch Law Firm/Dick McGuire Inter.....	300-312-294=906.....	9 of 18
10/7-9	Lady Tar Heel Invitational.....	325-303-293=921.....	9 of 18
10/28-30	ACC/SEC Challenge.....	297-299-316=903.....	1 of 7
11/4-6	The Derby Invitational.....	301-310-298=909.....	7 of 17
2/24-26	Lady Puerto Rico Classic.....	306-312-304=922.....	11 of 16
3/10-12	Lady Gamecock Classic.....	314-297-303=914.....	8 of 11
3/24-26	Liz Murphey Collegiate Classic.....	317-309-301=927.....	6 of 18
3/31-4/2	Bryan National Collegiate.....	309-295-301=905.....	7 of 17
4/14-16	SEC Championship.....	310-293-300=903.....	8 of 12
5/11-13	NCAA East Regional.....	296-297-304=897.....	13 of 21

**2006-07** *Head Coach: Kristi Coggins*

9/11-12	Branch Law Firm/Dick McGuire Inter.....	295-288-307=890.....	5 of 17
10/6-8	Lady Tar Heel Invitational.....	309-323-304=936.....	15 of 17
10/28-29	The Derby Invitational.....	311-299=610.....	5 of 17
11/3-5	NGCA Match Play Champ..... L, Duke 5-0; L, Florida 2-2-1.....		
2/23-25	Lady Puerto Rico Classic.....	294-295-303=892.....	5 of 16
3/9-11	"Mo" Morial Invitational.....	319-312-322=953.....	7 of 16
3/16-18	LSU Cleveland Classic.....	310-297-300=907.....	9 of 21
3/23-25	Liz Murphey Collegiate Classic.....	302-300-307=909.....	9 of 18
4/6-8	Bryan National Collegiate.....	297-310-310=917.....	8 of 18
4/20-22	SEC Championship.....	295-289-303=887.....	4 of 12
5/10-12	NCAA East Regional.....	290-289-295=874.....	9 of 21

**2007-08** *Head Coach: Kristi Coggins/Kalen Anderson\**

9/9-11	Cougar Classic.....	291-298-300=889.....	6 of 20
9/14-16	Mason Rudolph Championship.....	294-311-300=905.....	14 of 17
10/5-7	Lady Tar Heel Invitational.....	311-296-295=902.....	13 of 18
10/26-28	UA-Ann Rhoades Intercollegiate.....	300-308-297=905.....	7 of 18
11/4-5	NGCA Match Play Champ. .. L, Auburn 4-0-1; L, N. Mex. 3-2.....		
2/24-26*	Lady Puerto Rico Classic.....	299-295-296=890.....	7 of 18
3/14-16	LSU Cleveland Classic.....	306-306-302=914.....	10 of 17
3/21-23	Liz Murphey Collegiate Classic.....	316-319-307=942.....	13 of 18
3/28-30	Bryan National Collegiate.....	321-338-321=980.....	7 of 18
4/18-20	SEC Championship.....	300-319-296=915.....	5 of 12
5/8-10	NCAA East Regional.....	291-303-305=899.....	6 of 21
5/20-23	NCAA Championship.....	306-316-310-303=1235.....	22 of 24

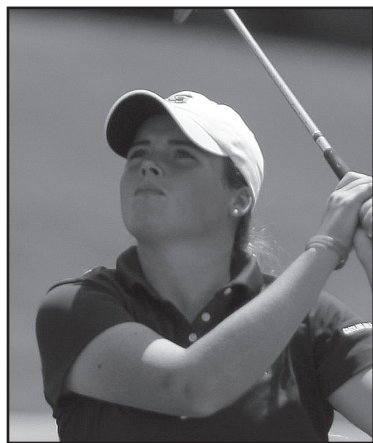
\* Kalen Anderson took over as head coach in February 2008

**2008-09** *Head Coach: Kalen Anderson*

9/14-16	Cougar Classic.....	290-296-296=882.....	6 of 22
10/3-5	Lady Tar Heel Invitational.....	310-307-309=926.....	13 of 18
10/10-12	Mercedes-Benz Collegiate.....	297-313-302=912.....	15 of 18
10/24-26	The Derby Invitational.....	310-304-306=920.....	T-8 of 17
2/16-17	Central District Invitational.....	309-319-308=936.....	11 of 15
3/13-15	LSU Golf Classic.....	292-305-287=884.....	T-10 of 18
3/20-22	Betsy Rawls Longhorn Invitational.....	310-311-308=929.....	T-12 of 18
4/3-5	Bryan National Collegiate.....	311-301-295=907.....	6 of 18
4/17-19	SEC Championship.....	299-300-298=897.....	9 of 12
5/7-9	NCAA East Regional.....	308-290-299=897.....	12 of 21

**2009-10** *Head Coach: Kalen Anderson*

9/6	NGCA Match Play Qualifying.....	292-294=586.....	2 of 16
9/7-8	NGCA Match Play - vs. Virginia.....	L, 2-1-2	
	NGCA Match Play - vs. Alabama.....	L, 3-1-1	
	NGCA Match Play - vs. Chattanooga.....	W, 3-2.....	7 of 16
9/25-27	Mason Rudolph Championship.....	300-296=596.....	17 of 17
10/9-11	Tar Heel Invitational.....	295-296-302=893.....	13 of 18
10/16-18	Mercedes-Benz Collegiate.....	302-290-297=889.....	3 of 18
2/22-23	Central District Invitational.....	301-309-305=915.....	11 of 15
3/1-2	Kinderlou Challenge.....	304-308-307=919.....	11 of 18
3/26-28	Liz Murphey Collegiate Classic.....	324-309-299=932.....	T-11 of 23
4/2-4	Bryan National Collegiate.....	294-302-297=893.....	9 of 18
4/16-18	SEC Championship.....	289-290-288=867.....	7 of 12
4/24	ECU/Duke Tri-Match.....	295-293=588.....	2 of 3
5/6-8	NCAA East Regional.....	283-291-290=864.....	1 of 24
5/18-21	NCAA Championship.....	300-297-293-296=1186.....	T-14 of 24



## Katie Burnett

**2010 - Honorable Mention (Golfweek, NGCA)**

Katie Burnett put together a stellar sophomore campaign that saw her win the NCAA East Regional, tie for the highest NCAA Championship finish in school history (9th place), and put together the second-best single-season scoring average in South Carolina women's golf history. Burnett led the Gamecocks to a team title at the NCAA East Regional in Greenville, N.C., the first regional team title in program history and the first team victory of any kind in five years. In her sophomore season, she amassed a pair of top-5 finishes, three top-10s and nine top-20 showings.

## Siew Ai Lim

**1994 - Second Team (NGCA) • 1995 - First Team (NGCA)**

Siew Ai Lim completed her career in 1995 as the only Gamecock women's golfer to compete in the NCAA Championship four times. She has the best record of any South Carolina player at the national championship, posting three top-20 efforts - including a tie for sixth place in 1996 and a tie for ninth in 1995 - in her four appearances. She propelled the Gamecocks to the 1995 NCAA Championship by winning the NCAA East Regional - the first NCAA Regional title for Gamecock women's golf - and helped the team to its best-ever NCAA finish, a tie for ninth. Named the 1995 SEC Player of the Year, her regional title was one of two individual medalist honors claimed by the Kuala Lumpur, Malaysia, native; the other being a win at the 1994 Carolyn Cudone Intercollegiate. She completed her career as the all-time scoring leader at South Carolina; she now ranks fifth all-time with a 76.23 career stroke average.



## Kristy McPherson

**2001, 2002, 2003 - First Team (NGCA)**

The most decorated golfer in South Carolina history, Kristy McPherson remains one of only two players in Southeastern Conference history to win back-to-back SEC Women's Golf Championship titles, claiming medalist honors in 2001 and 2002. The second year, her 7-under-par 209 helped lead the Gamecocks to its first team SEC Championship, defeating Auburn by three strokes. She led the Gamecocks to the NCAA Championship each year from 2001 to 2003 and was the team's top finisher each time. McPherson is the all-time leader in individual victories at South Carolina, winning six tournaments in her four years. A four-time All-SEC selection and the 2003 SEC Player of the Year, McPherson left USC with the all-time lead in scoring average at 74.42; she currently ranks second all-time. She also posted the top three individual seasons, her best being her senior year of 2002-03 with a 73.42 stroke average.

## Benedicte Toumpsin

**2008 - Third Team (Golfweek); Honorable Mention (NGCA)**

Benedicte Toumpsin was named an All-American following a stellar sophomore campaign in 2008 when she captured medalist honors at the NCAA East Regional, propelling South Carolina into the NCAA Championship for the first time in five seasons. Also a two-time All-SEC selection, Toumpsin won at least a share of medalist honors twice in her career - the 2008 regional and the 2009 LSU Golf Classic. She finished her career with an NCAA Championship appearance in 2010, helping the team to a tie for 14th place





**Metro  
Conference  
(1988-1991)**



**Southeastern  
Conference  
(1992-present)**



**ALL-METRO CONFERENCE**

**Debbie Eckroth**  
1989 - First Team  
1990 - First Team

**Aileen Robertson**  
1990 - First Team

**Vikki Valentine**  
1990 - First Team

**ALL-SEC**

**Libby Bagwell**  
1994 - Second Team

**Rachel Bates**  
1993 - First Team

**Katie Burnett**  
2010 - Second Team

**Clarissa Childs**  
1993 - Second Team  
1994 - First Team  
1995 - First Team  
1996 - Second Team

**Adrienne Gautreaux**  
2002 - Second Team  
2004 - First Team

**Libby Howard**  
1996 - Second Team

**Siew Ai Lim**  
1993 - Second Team  
1994 - First Team  
1995 - First Team  
1996 - First Team

**Emma Lofgren**  
1999 - Second Team

**Kristy McPherson**  
2000 - Second Team  
2001 - First Team  
2002 - First Team  
2003 - First Team

**Jenna Pearson**  
2007 - Second Team

**Benedicte Toumpsin**  
2008 - First Team  
2009 - Second Team

**SEC PLAYERS OF THE WEEK**

**Adrienne Gautreaux**  
March 19, 2004

**Kristy McPherson**  
Feb. 23, 2000  
March 14, 2002  
March 21, 2002  
Third week, 2003

**SEC Players of the Year**



**1995 - Siew Ai Lim**



**2003 - Kristy McPherson**





## NGCA All-American Scholars

**2010**

Taylor Barrett  
Katie Burnett  
Corrine Carr  
Amanda Strang

**2009**

Taylor Barrett  
Katie Burnett  
Corrine Carr

**2008**

Taylor Barrett  
Whitney Simons  
Blythe Worley

**2007**

Taylor Barrett  
Jenna Pearson  
Laura Raffo  
Whitney Simons  
Blythe Worley

**2006**

Erica Battle  
Laura McCaslin  
Jenna Pearson  
Laura Raffo  
Whitney Simons  
Blythe Worley

**2005**

Erica Battle  
Tiffany Catafygiotu  
Jenna Pearson  
Caroline Rominger  
Whitney Simons  
Blythe Worley

**2004**

Erica Battle  
Tiffany Catafygiotu  
Adrienne Gautreaux  
Laura McCaslin  
Jenna Pearson  
Kory Thompson

**2003**

Kacy Thompson  
Kory Thompson

**2002**

Reetta Laakkonen

**2001**

Stephanie Reynolds  
Kacy Thompson

## Southeastern Conference Academic Honor Roll

**2010**

Taylor Barrett  
Corrine Carr  
Katie Burnett  
Cayci Ruppe  
Amanda Strang  
Meredith Swanson  
Benedicte Toumpsin

**2009**

Taylor Barrett  
Katie Burnett  
Corrine Carr  
Cayci Ruppe

**2008**

Taylor Barrett  
Erika Holmen  
Camila Mori  
Laura Raffo  
Whitney Simons  
Meredith Taylor  
Blythe Worley

**2007**

Taylor Barrett  
Camila Mori  
Jenna Pearson  
Laura Raffo  
Whitney Simons  
Meredith Taylor  
Benedicte Toumpsin  
Blythe Worley

**2006**

Erica Battle  
Laura McCaslin  
Jenna Pearson  
Laura Raffo  
Whitney Simons  
Meredith Taylor  
Blythe Worley

**2005**

Erica Battle  
Tiffany Catafygiotu  
Lauren Huhnerkoch  
Laura McCaslin  
Jenna Pearson  
Laura Raffo  
Caroline Rominger  
Whitney Simons  
Blythe Worley

**2004**

Erica Battle

Tiffany Catafygiotu  
Adrienne Gautreaux  
Laura McCaslin  
Megan Miller  
Jenna Pearson  
Kory Thompson

**2003**

Tiffany Catafygiotu  
Adrienne Gautreaux  
Kristy McPherson  
Marci Robinson  
Kacy Thompson  
Kory Thompson

**2002**

Sarah Kidd  
Reetta Laakkonen  
Kristy McPherson  
Kristen Ruble  
Kacy Thompson

**2001**

Abby Derman  
Apryl Arrants  
Sarah Kidd  
Emma Lofgren  
Stefanie Reynolds  
Kristin Ruble  
Kacy Thompson

**2000**

Apryl Arrants  
Abby Derman  
Sarah Kidd  
Emma Lofgren  
Stefanie Reynolds

**1999**

Apryl Arrants  
Emma Lofgren  
Abby Derman  
Lotte Moeller

**1999**

Apryl Arrants  
Libby Howard  
Emma Lofgren  
Katy Schlotman

**1997**

Karin Fries  
Apryl Arrants  
Libby Howard

**1996**

Clarissa Childs  
Karen Fries  
Libby Howard  
Siew Ai Lim  
Julie Norris

**1995**

Siew Ai Lim  
Julie Norris

**1994**

Jill Darr  
Siew Ai Lim  
Julie Norris

**1993**

Rachel Bates  
Jill Darr  
Margaret Hickey  
Tara Joy

### Jenna Pearson 2006 SEC Scholar-Athlete of the Year



### Adrienne Gautreaux 2004 CoSIDA First-Team Academic All-American

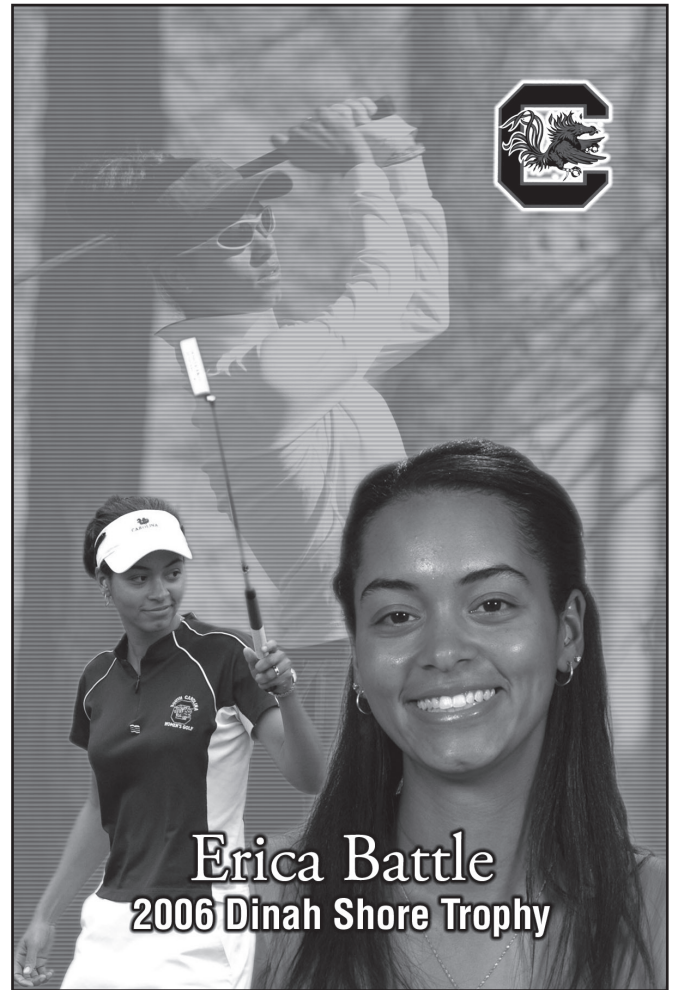




# Dinah Shore Trophy



**Adrienne Gautreaux**  
2004 Dinah Shore Trophy



**Erica Battle**  
2006 Dinah Shore Trophy

The Dinah Shore Trophy Award, a part of the Dinah Shore Scholarship Fund, is a cooperative effort between The LPGA Foundation, the Friends of Golf (FOG), and the Nabisco Dinah Shore, one of the LPGA's four major championships and the largest contributor to the Dinah Shore Scholarship Fund.

The LPGA Foundation introduced the Dinah Shore Scholarship Fund in March 1994 in honor of the late Dinah Shore, and together with FOG and the Nabisco Dinah Shore, developed the Dinah Shore Trophy Award and its criteria. A fundraising organization administered by Eddie Merrins, head golf professional at Bel Air Golf Club in Beverly Hills, CA, FOG contributes annually to collegiate, high school and junior golf programs throughout the country, and Dinah Shore was considered the "First Lady" of FOG.

A selection committee of The LPGA Foundation chooses the Dinah Shore Trophy Award recipient from nominations submitted by the National Golf Coaches Association. Nominees for the award must meet the following criteria:

- \* An overall grade point average (GPA) of at least 3.2 on a 4.0 scale;
- \* Played in at least 50% of her team's scheduled events;
- \* Maintained a scoring average of 78 or less; and
- \* Demonstrated leadership skills and/or extraordinary community affairs work.

The perpetual Dinah Shore Trophy is a crystal trophy, created by Tiffany & Co. with an engraving of Dinah Shore. The trophy is housed at Mission Hills Country Club, site of the annual Nabisco Dinah Shore.

- 2010 - Katie Detlefsen
- 2009 - Amanda Blumenherst
- 2008 - Amanda Blumenherst
- 2007 - Stacy Lewis
- 2006 - Erica Battle**
- 2005 - Karin Sjodin
- 2004 - Adrienne Gautreaux**
- 2003 - Katherine Hull

- Central Florida
- Duke
- Duke
- Arkansas
- South Carolina**
- Oklahoma State
- South Carolina**
- Pepperdine

- 2002 - Meredith Duncan
- 2001 - Melanie Hagewood
- 2000 - Lisette Lee
- 1999 - Mallory Crosland
- 1998 - Riko Higashio
- 1997 - Kellee Booth
- 1996 - Marcie Clemens
- 1995 - Stephanie Neil

- LSU
- Baylor
- LSU
- Vanderbilt
- Florida
- Arizona State
- Auburn
- Wake Forest



**Season Average**

Year	Rds.	Strokes	Avg.
1. 2009-10	34	10,128	297.88
2. 2006-07	29	8,775	302.59
3. 2002-03	31	9,380	302.58
4. 2005-06	30	9,107	303.57
5. 2001-02	34	10,326	303.71
6. 2007-08	34	10,376	305.18
7. 1986-87	33	10,116	306.55
8. 1994-95	34	10,439	307.03
9. 1998-99	31	9,546	307.94
10. 2004-05	30	9,243	308.10

**Single-Season Top-5 Finishes**

1. 1989-90	9
2. 1994-95	8
1980-81	8
4. 1991-92	7
1990-91	7
6. 2001-02	6
1998-99	6
1992-93	6
9. 1999-2000	5
1995-96	5
1986-87	5
1985-86	5

**Team Championships**

NCAA East Regional, 5/6-8/10	283-291-290=864
ACC/SEC Challenge, 10/28-30/05	297-290-316=903
SEC Championship, 4/19-21/02	289-282-290=861
Casa De Campo Inv., 3/12-13/99	317-312-309=938
Miami Preview Classic, 2/9-11/97	303-313-320=936
Carolyn Cudone Inter., 11/12-14/93	305-311-294=910
Memphis Inter., 9/29-10/1/91	314-314-312=940
Alabama Invitational, 3/1-3/91	312-300=612
James Madison Inv., 9/21-23/90	305-297-314=916
Metro Conf. Champ., 5/4-6/90	304-310-304=918
Lady Lion Inv., 10/21-23/88	317-315-313=945
Woodbridge Collegiate, 4/17-19/87	291-300-299=890
Hudson Industries Inv., 3/6-8/87	296-316-307=919
South Carolina Inv., 3/29-31/85	313-304-307=924
Lady Gamecock Inv., 4/9-11/82	295-293-309=897
Lady Gamecock Inv., 4/3-5/81	306-307-312=925
Purdue Invitational, 1980-81	317-298=615



*The 1989-90 Gamecocks finished in the top five of a school-record nine tournaments, including winning the Metro Conference Championship.*

**18-Hole Score**

1. SEC Championship, 2nd Rd., 4/20/02	282
2. NCAA East Regional, 1st Rd., 5/6/10	283
3. NCAA East Regional, 2nd Rd., 5/9/03	287
LSU Golf Classic, 3rd Rd., 3/15/09	287
5. SEC Championship, 3rd Rd., 4/18/10	288
Dick McGuire Inter., 2nd Rd., 9/11/06	288
7. SEC Championship, 1st Rd., 4/16/10	289
NCAA East Regional, 2nd Rd., 5/11/07	289
SEC Championship, 3rd Rd., 4/21/07	289
10. SEC Championship, 2nd Rd., 4/19/02	289

**54-Hole Tournament**

1. SEC Championship, 4/19-21/02	861 (289-282-290)
2. NCAA East Regional, 5/6-8/10	864 (283-291-290)
3. SEC Championship, 4/16-18/10	867 (289-290-288)
4. NCAA East Regional, 5/10-12/07	874 (290-289-295)
5. Cougar Classic, 9/14-16/08	882 (290-296-296)
6. NCAA East Regional, 5/8-10/03	884 (303-287-294)
Lady Paladin Inv., 10/25-27/02	884 (300-291-291)
Lady Paladin Inv., 10/20-22/00	884 (296-296-292)
9. SEC Championship, 4/20-22/07	887 (295-289-303)
SEC Championship, 4/20-22/01	887 (295-290-302)

**36-Hole Tournament**

1. NGCA Match Play Qualifying, 9/6/09	586 (292-294)
2. ECU/Duke Tri-Match, 4/24/10	588 (295-293)
3. Mason Rudolph Women's Championship, 9/25-27/09	596 (300-296)
Lady Gamecock Classic, 3/19-21/99	596 (300-296)
5. Bryan Park National Coll., 3/28-30/03	601 (294-307)
6. The Derby Inv., 10/28-29/06	610 (311-299)
SEC Championship, 4/19-21/96	610 (310-300)
8. Alabama Inv., 3/1-3/91	612 (312-300)
9. Lady Gator Inv., 2/26-27/99	615 (311-304)
Purdue Invitational, 1980-81	615 (317-298)

**72-Hole Tournament**

1. NCAA Championship, 5/18-21/10	1,186 (300-297-293-296)
2. NCAA Championship, 5/24-27/95	1,204 (299-300-297-308)
3. NCAA Championship, 5/21-24/02	1,217 (298-298-308-313)
4. NCAA Championship, 5/27-30/87	1,225 (298-303-304-320)
5. NCAA Championship, 5/20-23/08	1,235 (306-316-310-303)
6. NCAA Championship, 5/26-29/93	1,238 (309-310-315-304)
7. NCAA Championship, 5/20-23/03	1,248 (318-318-309-303)
8. NCAA Championship, 5/22-25/01	1,254 (308-323-311-312)
9. AIAW Invitational, 6/17-20/81	1,267 (311-331-305-320)
10. NCAA Championship, 5/22-25/96	1,295 (334-311-329-321)

**First-Round Score**

1. NCAA East Regional, 5/6/10	283
2. SEC Championship, 4/16/10	289
SEC Championship, 4/19/02	289
4. NCAA East Regional, 5/10/07	290
5. NCAA East Regional, 5/8/08	291
Cougar Classic, 9/9/07	291
SEC Championship, 4/29/94	291
Woodbridge Collegiate, 4/17/87	291
9. NGCA Match Play Qualifying, 9/6/09	292
10. NCAA East Regional, 5/5/05	293

**Second-Round Score**

1. SEC Championship, 4/20/02	282
2. NCAA East Regional, 5/9/03	287
3. Dick McGuire Inter., 9/11/06	288
4. NCAA East Regional, 5/11/07	289
SEC Championship, 4/21/07	289
6. Mercedes-Benz Collegiate, 10/17/09	290
ACC/SEC Challenge, 10/29/05	290
SEC Championship, 4/21/01	290
9. NCAA East Regional, 5/7/10	291
Lady Paladin Inv., 10/26/02	291

**Final-Round Score**

1. LSU Golf Classic, 3/15/09	287
2. SEC Championship, 4/18/10	288
3. NCAA East Regional, 5/8/10	290
SEC Championship, 4/21/02	290
5. Lady Paladin Inv., 10/27/02	291
6. Lady Paladin Inv., 10/22/00	292
7. ECU/Duke Tri-Match, 4/24/10	293
Lady Tar Heel Inv., 10/9/05	293
Liz Murphey Coll., 3/28/04	293
Lady Seminole Inv., 9/20/98	293



**Career Average** (Min. 55 rds. and two years)

Player	Years	Rds.	Strokes	Avg.
1. Katie Burnett	2008-pres.	64	4,760	74.37
2. Kristy McPherson	1999-2003	129	9,600	74.42
3. Bénédicte Toumpsin	2006-2010	122	9,100	74.59
4. Adrienne Gautreaux	2001-04	100	7,575	75.75
5. Siew Ai Lim	1992-96	130	9,910	76.23
6. Corrine Carr	2008-10	58	4,431	76.39
7. Jenna Pearson	2003-07	114	8,723	76.52
8. Camila Mori	2005-08	73	5,627	77.08
9. Erica Battle	2002-06	94	7,260	77.23
10. Whitney Simons	2004-08	101	7,810	77.33
11. Blythe Worley	2004-08	96	7,426	77.35
12. Debbie Eckroth	1988-92	110	8,535	77.59
13. Elizabeth Macfie	1985-88	78	6,055	77.63
14. Clarissa Childs	1992-96	123	9,552	77.66
15. Truie Timmons	1984-88	97	7,557	77.91
16. Marianne Morris	1983-87	121	9,434	77.97
17. Taylor Barrett	2006-10	96	7,499	78.11
18. Emma Lofgren	1996-2000	118	9,241	78.31
19. Kacy Thompson	1999-2003	117	9,170	78.38
20. Stefanie Reynolds	1998-2001	80	6,296	78.70

**Season Average** (Min. 18 rounds)

Player	Years	Rds.	Strokes	Avg.
1. Kristy McPherson	2002-03	31	2,276	73.42
2. Katie Burnett	2009-10	34	2,502	73.58
Kristy McPherson	2001-02	34	2,502	73.58
4. Kristy McPherson	2000-01	34	2,510	73.82
5. Bénédicte Toumpsin	2008-09	30	2,217	73.90
6. Bénédicte Toumpsin	2007-08	34	2,517	74.03
7. Siew Ai Lim	1994-95	31	2,305	74.35
8. Adrienne Gautreaux	2003-04	34	2,531	74.44
9. Jenna Pearson	2006-07	29	2,169	74.79
10. Corrine Carr	2009-10	34	2,545	74.85
11. Bénédicte Toumpsin	2009-10	30	2,249	74.96
12. Bénédicte Toumpsin	2006-07	28	2,117	75.61
13. Lise Russell	1983-84	18	1,362	75.67
14. Amanda Strang	2009-10	34	2,575	75.73
15. Siew Ai Lim	1995-96	32	2,427	75.84
16. Whitney Simons	2005-06	30	2,277	75.90
17. Clarissa Childs	1994-95	34	2,584	76.00
18. Marianne Morris	1986-87	33	2,513	76.15
19. Erica Battle	2005-06	30	2,285	76.17
Jenna Pearson	2005-06	30	2,285	76.17

**Individual Medalists**

Katie Burnett	NCAA East Regional, 5/6-8/10	67-72-71=210
Clarissa Childs	Carolyn Cudone Inter., 11/12-14/93	79-74-76=224
Debbie Eckroth	Metro Conference Champ., 5/5-7/89	78-72-72=222
Siew Ai Lim	Carolyn Cudone Intercollegiate, 11/6/94	68-72-70=210
Siew Ai Lim	NCAA East Regional, 5/11-13/95	73-71-70=214
Kristy McPherson	SEC Championship, 4/20-22/01	67-70-70=207
Kristy McPherson	ACC/SEC Shootout, 9/29-10/1/01	71-70-76=217
Kristy McPherson	Spartan Invitational, 3/4-6/02	71-69-71=211
Kristy McPherson	SEC Championship, 4/19-21/02	69-69-71=209
Kristy McPherson	Bryan Park National Coll., 3/28-30/03	69-73=142
Kristy McPherson	Lady Boilermaker Inv., 4/11-12/03	70-78-70=218
Lotte Moeller	Casa De Campo Inv., 3/12-13/99	79-78-71=228
Marianne Morris	Hudson Industries Inv., 3/6-8/87	72-76-74=222
Jan Rikard	Lady Gamecock Invitational, 4/9-11/82	73-69-77=219
Lynn Stiffler	Lady Gamecock Invitational, 4/3-5/81	69-73-76=218
Kacy Thompson	Lady Gamecock Classic, 3/14/03	72
Bénédicte Toumpsin	NCAA East Regional, 5/8-10/08	68-70-76=214
Bénédicte Toumpsin	LSU Golf Classic, 3/13-15/09	70-71-68=209
Vikki Valentine	Alabama Invitational, 3/1-3/91	75-74=149



**Kristy McPherson was the individual medalist in a school-record six events during her four-year career (1999-2003), including two SEC Championships.**

**Career Top-5 Finishes**

1. Kristy McPherson	1999-2003	18
2. Siew Ai Lim	1992-96	9
3. B. Toumpsin	2006-10	8
4. Clarissa Childs	1992-96	7
Debbie Eckroth	1988-92	7
6. Vikki Valentine	1988-92	6
Truie Timmons	1984-88	6
8. A. Gautreaux	2001-04	4
Elizabeth Macfie	1985-88	4
Marianne Morris	1983-87	4
Lynn Stiffler	1980-82	4

**Career Top-10 Finishes**

1. Kristy McPherson	1999-2003	25
2. Siew Ai Lim	1992-96	24
3. Debbie Eckroth	1988-92	20
4. Marianne Morris	1983-87	16
5. Clarissa Childs	1992-96	11
Vikki Valentine	1988-92	11
7. Elizabeth Macfie	1985-88	10
8. Truie Timmons	1984-88	9
9. A. Gautreaux	2001-04	8
B. Toumpsin	2006-10	8

**Single-Season Top-5 Finishes**

1. Kristy McPherson	2002-03	7
2. B. Toumpsin	2007-08	5
Kristy McPherson	2001-02	5
Kristy McPherson	2000-01	5
Debbie Eckroth	1989-90	5
6. Siew Ai Lim	1994-95	4
Lynn Stiffler	1980-81	4
8. Jenna Pearson	2006-07	3
Clarissa Childs	1994-95	3
Clarissa Childs	1993-94	3
Siew Ai Lim	1993-94	3
Vikki Valentine	1991-92	3
Kim Belk	1988-89	3
Marianne Morris	1986-87	3
Truie Timmons	1986-87	3
Robin Abare	1980-81	3

**Single-Season Top-10s**

1. Siew Ai Lim	1994-95	10
2. Kristy McPherson	2002-03	8
Kristy McPherson	2000-01	8
Debbie Eckroth	1989-90	8
5. Kristy McPherson	2001-02	7
6. Siew Ai Lim	1993-94	6
Debbie Eckroth	1991-92	6
Marianne Morris	1985-86	6
Lynn Stiffler	1980-81	6
10. B. Toumpsin	2007-08	5
Marianne Morris	1986-87	5
Truie Timmons	1986-87	5



**72-Hole Tournament Total**

1. Katie Burnett	NCAA Championship, 5/18-21/10	286 (72-74-69-71)
2. Adrienne Gautreaux	NCAA Championship, 5/18-21/04	293 (73-72-78-70)
Siew Ai Lim	NCAA Championship, 5/24-27/95	293 (74-73-73-73)
4. Clarissa Childs	NCAA Championship, 5/24-27/95	296 (71-75-74-76)
5. Marianna Morris	NCAA Championship, 5/27-30/87	297 (75-74-72-76)
6. Corrine Carr	NCAA Championship, 5/18/21/10	298 (76-75-76-71)
7. Kristy McPherson	NCAA Championship, 5/21-24/02	300 (76-71-74-79)
8. Bénédicte Toumpsin	NCAA Championship, 5/18-21/10	301 (77-75-72-77)
Camila Mori	NCAA Championship, 5/20-23/08	301 (78-73-76-74)
Reetta Laakkonen	NCAA Championship, 5/21-24/04	301 (72-74-80-75)

**54-Hole Tournament Total**

1. Kristy McPherson	SEC Championship, 4/20-22/01	207 (67-70-70)
2. Bénédicte Toumpsin	LSU Golf Classic, 3/13-15/09	209 (70-71-68)
Kristy McPherson	NCAA East Regional, 5/8-10/03	209 (68-71-70)
Kristy McPherson	SEC Championship, 4/19-21/02	209 (69-69-71)
5. Katie Burnett	NCAA East Regional, 5/6-8/10	210 (67-72-71)
Siew Ai Lim	Carolyn Cudone Inter., 11/4-6/94	210 (68-72-70)
7. Kristy McPherson	Spartan inv., 3/4-6/02	211 (71-69-71)
8. Katie Burnett	Cougar Classic, 9/14-16/08	213 (70-70-73)
9. Katie Burnett	SEC Championship, 4/16-18/10	214 (72-70-72)
Bénédicte Toumpsin	NCAA East Regional, 5/8-10/08	214 (68-70-76)
Bénédicte Toumpsin	Lady Puerto Rico Classic, 2/24-26/08	214 (74-68-72)
Kristy McPherson	NCAA East Regional, 5/10-12/01	214 (73-69-72)
Kristy McPherson	Lady Paladin Inv., 10/20-22/00	214 (72-72-70)
Siew Ai Lim	NCAA East Regional, 5/11-13/95	214 (73-71-70)

**36-Hole Tournament Total**

1. Katie Burnett	Mason Rudolph W. Champ., 9/25-27/09	142 (69-73)
Kristy McPherson	Bryan Park National Coll., 3/28-30/03	142 (69-73)
3. Katie Burnett	NGCA Match Play Qualifying, 9/6/09	144 (69-75)
Amanda Strang	NGCA Match Play Qualifying, 9/6/09	144 (72-72)
5. Katie Burnett	ECU/Duke Tri-Match, 4/24/10	145 (72-73)
Corrine Carr	ECU/Duke Tri-Match, 4/24/10	145 (71-74)
Corrine Carr	NGCA Match Play Qualifying, 9/6/09	145 (72-73)
8. Siew Ai Lim	SEC Championship, 4/19-21/96	146 (74-72)
9. Emma Lofgren	Lady Gamecock Classic, 3/19-21/99	147 (73-74)
10. Amanda Strang	ECU/Duke Tri-Match, 4/24/10	148 (76-72)
Amanda Strang	Mason Rudolph W. Champ., 9/25-27/09	148 (74-74)



*Jenna Pearson holds the two best single-round scores in school history, both of which came in her senior season. Her second-round 66 at the 2007 SEC Championship topped her 67 in the second round of the 2006 Dick McGuire Intercollegiate.*

**18-Hole Score**

1. Jenna Pearson	SEC Championship, 2nd Rd., 4/21/07	66
2. Corrine Carr	SEC Championship, 3rd Rd., 4/18/10	67
Katie Burnett	NCAA East Regional, 1st Rd., 5/6/10	67
Jenna Pearson	Dick McGuire Inter., 2nd Rd., 9/11/06	67
Kristy McPherson	SEC Championship, 1st Rd., 4/20/01	67
6. Bénédicte Toumpsin	SEC Championship, 1st Rd., 4/16/10	68
Bénédicte Toumpsin	LSU Golf Classic, 3rd Rd., 3/15/10	68
Bénédicte Toumpsin	NCAA East Regional, 1st Rd., 5/8/08	68
Bénédicte Toumpsin	Lady Puerto Rico Classic, 2nd Rd., 2/25/08	68
Jenna Pearson	Bryan Park National Coll., 1st Rd., 4/6/07	68
Marianne Morris	Lady Seminole Classic, 2nd Rd., 9/21/85	68
Siew Ai Lim	Carolyn Cudone Inter., 1st Rd., 11/4/04	68
Kristy McPherson	NCAA East Regional, 1st Rd., 5/8/03	68
Kristy McPherson	SEC Championship, 1st Rd., 4/18/03	68

**First-Round Score**

1. Katie Burnett	NCAA East Regional, 5/6/10	67
Kristy McPherson	SEC Championship, 4/20/01	67
3. Bénédicte Toumpsin	SEC Championship, 4/16/10	68
Bénédicte Toumpsin	NCAA East Regional, 5/8/08	68
Jenna Pearson	Bryan Park National Coll., 4/6/07	68
Kristy McPherson	NCAA East Regional, 5/8/03	68
Kristy McPherson	SEC Championship, 4/18/03	68
Siew Ai Lim	Carolyn Cudone Inter., 11/4/04	68
9. Katie Burnett	NGCA Match Play Qualifying, 9/6/09	69
Katie Burnett	Mason Rudolph W. Champ., 9/25/09	69
Jenna Pearson	NCAA Fall Preview, 9/20/04	69
Kristy McPherson	Bryan Park National Coll., 3/28/03	69
Kristy McPherson	SEC Championship, 4/19/02	69
Truie Timmons	Alabama Seascape Tourn., 11/3/84	69
Lynn Siffler	Lady Gamecock Inv., 4/3/81	69

**Second-Round Score**

1. Jenna Pearson	SEC Championship, 4/21/07	66
2. Jenna Pearson	Dick McGuire Inter., 9/11/06	67
3. Bénédicte Toumpsin	Lady Puerto Rico Classic, 2/25/08	68
Marianne Morris	Lady Seminole Classic, 9/21/85	68
5. Bénédicte Toumpsin	SEC Championship, 4/19/09	69
Bénédicte Toumpsin	Dick McGuire Inter., 9/11/06	69
Adrienne Gautreaux	NCAA East Regional, 5/10/02	69
Kristy McPherson	SEC Championship, 4/20/02	69
Kristy McPherson	Spartan Invitational, 3/5/02	69
Kristy McPherson	NCAA East Regional, 5/11/01	69
Jan Rikard	Lady Gamecock Inv., 4/10/82	69

**Third-Round Score**

1. Corrine Carr	SEC Championship, 4/18/10	67
2. Katie Burnett	NCAA Championship, 5/20/10	69
Adrienne Gautreaux	Liz Murphey Collegiate, 3/28/04	69
Adrienne Gautreaux	Mason Rudolph Champ., 9/28/03	69
Kristy McPherson	Bryan Park National Collegiate, 4/8/01	69
Kerry Zebick	Carolyn Cudone Inter., 11/14/93	69
Debbie Eckroth	Memphis Women's Inv., 10/3/89	69
8. Katie Burnett	LSU Golf Classic, 3/15/09	70
10 other golfers	16 other occasions	70

**Senior****Season Average** (Min. 18 rounds)

Player	Year	Rds.	Strokes	Avg.
1. Kristy McPherson	2002-03	31	2276	73.42
2. Adrienne Gautreaux	2003-04	34	2531	74.44
3. Jenna Pearson	2006-07	29	2169	74.79
4. Corrine Carr	2009-10	34	2545	74.85
5. Bénédicte Toumpsin	2009-10	30	2249	74.96

**54-Hole Tournament Total**

1. Kristy McPherson	NCAA East Regional, 5/8-10/03	209 (68-71-70)
2. Jenna Pearson	Dick McGuire Inter., 9/11-12/06	216 (72-67-77)
3. Corrine Carr	NCAA East Regional, 5/6-8/10	217 (72-71-74)
Bénédicte Toumpsin	SEC Championship, 4/16-18/10	217 (68-72-77)
Corrine Carr	Mercedes-Benz Collegiate, 10/16-18/10	217 (73-73-71)
Jenna Pearson	SEC Championship, 4/20-22/07	217 (74-66-77)

**18-Hole Score**

1. Jenna Pearson	SEC Championship, 2nd Rd., 4/21/07	66
2. Corrine Carr	SEC Championship, 3rd Rd., 4/18/10	67
Jenna Pearson	Dick McGuire Inter., 2nd Rd., 9/11/06	67
4. Bénédicte Toumpsin	SEC Championship, 1st Rd., 4/16/10	68
Jenna Pearson	Bryan Park National Coll., 1st Rd., 4/6/07	68
Kristy McPherson	NCAA East Regional, 1st Rd., 5/8/03	68
Kristy McPherson	SEC Championship, 1st Rd., 4/18/03	68

**Single-Season Top-5 Finishes**

1. Kristy McPherson	2002-03	7
2. Jenna Pearson	2006-07	3
Vikki Valentine	1991-92	3
Kim Belk	1988-89	3
Marianne Morris	1986-87	3

**Sophomore****Season Average** (Min. 18 rounds)

Player	Year	Rds.	Strokes	Avg.
1. Katie Burnett	2009-10	34	2502	73.59
2. Kristy McPherson	2000-01	34	2510	73.82
3. Bénédicte Toumpsin	2007-08	34	2517	74.03
4. Whitney Simons	2005-06	30	2277	75.90
5. Adrienne Gautreaux	2001-02	34	2596	76.35

**54-Hole Tournament Total**

1. Kristy McPherson	SEC Championship, 4/20-22/01	207 (67-70-70)
2. Katie Burnett	NCAA East Regional, 5/6-8/10	210 (67-72-71)
3. Katie Burnett	SEC Championship, 4/16-18/10	214 (72-70-72)
Bénédicte Toumpsin	NCAA East Regional, 5/8-10/08	214 (68-70-76)
Bénédicte Toumpsin	Lady Puerto Rico Classic, 2/24-26/08	214 (74-68-72)
Kristy McPherson	NCAA East Regional, 5/10-12/01	214 (73-69-72)
Kristy McPherson	Lady Paladin Inv., 10/20-22/00	214 (72-72-70)

**18-Hole Score**

1. Katie Burnett	NCAA East Regional, 1st Rd., 5/6/10	67
Kristy McPherson	SEC Championship, 1st Rd., 4/20/01	67
3. Bénédicte Toumpsin	NCAA East Regional, 1st Rd., 5/8/08	68
Bénédicte Toumpsin	Lady Puerto Rico Classic, 2nd Rd., 2/25/08	68
5. Katie Burnett	Three times...	69
Four other golfers	Five other times...	69

**Single-Season Top-5 Finishes**

1. Bénédicte Toumpsin	2007-08	5
Kristy McPherson	2001-02	5
Debbie Eckroth	1989-90	5
4. Clarissa Childs	1993-94	3
Siew Ai Lim	1993-94	3

**Junior****Season Average** (Min. 18 rounds)

Player	Year	Rds.	Strokes	Avg.
1. Kristy McPherson	2001-02	34	2502	73.59
2. Siew Ai Lim	1994-95	31	2305	74.35
3. Lise Russell	1983-84	18	1362	75.67
4. Clarissa Childs	1994-95	34	2584	76.00
5. Jenna Pearson	2005-06	30	2285	76.17

**54-Hole Tournament Total**

1. Kristy McPherson	SEC Championship, 4/19-21/02	209 (69-69-71)
2. Siew Ai Lim	Carolyn Cudone Inter., 11/4-6/94	210 (68-72-70)
3. Kristy McPherson	Spartan Inv., 3/4-6/02	211 (71-69-71)
4. Siew Ai Lim	NCAA East Regional, 5/11-13/05	214 (73-71-70)
5. Kristy McPherson	Lady Gamecock Classic, 3/15-17/02	215 (72-70-73)

**18-Hole Score**

1. Siew Ai Lim	Carolyn Cudone Inter., 1st Rd., 11/4/94	68
Marianne Morris	Lady Seminole Classic, 2nd Rd., 9/21/85	68
3. Kristy McPherson	SEC Championship, 2nd Rd., 4/20/02	69
Kristy McPherson	SEC Championship, 1st Rd., 4/19/02	69
Kristy McPherson	Spartan Inv., 2nd Rd., 3/5/02	69
Kerry Zebick	Carolyn Cudone, Inter., 3rd Rd., 11/14/93	69

**Single-Season Top-5 Finishes**

1. Kristy McPherson	2001-02	5
2. Siew Ai Lim	1994-95	4
3. Clarissa Childs	1994-95	3
Truie Timmons	1986-87	3
5. Vikki Valentine	1990-91	2
Emma Lofgren	1998-99	2

**Freshman****Season Average** (Min. 18 rounds)

Player	Year	Rds.	Strokes	Avg.
1. Katie Burnett	2008-09	30	2258	75.27
2. Bénédicte Toumpsin	2006-07	28	2117	75.61
3. Amanda Strang	2009-10	34	2575	75.73
4. Kristy McPherson	1999-2000	30	2312	77.07
5. Caroline Rominger	2004-05	27	2097	77.67

**54-Hole Tournament Total**

1. Katie Burnett	Cougar Classic, 9/14-16/08	213 (70-70-73)
2. Bénédicte Toumpsin	Dick McGuire Inter., 9/11-12/06	215 (71-69-75)
3. Bénédicte Toumpsin	NCAA East Regional, 5/10-12/07	217 (72-73-72)
4. Lynn Stiffler	Lady Gamecock Inv., 4/3-5/81	218 (69-73-76)
5. Kristy McPherson	Lady Gator Inv., 2/25-27/00	219 (72-74-73)

**18-Hole Score**

1. Bénédicte Toumpsin	Dick McGuire Inter., 2nd Rd., 9/11/06	69
Truie Timmons	Alabama Seascape Tourn., 1st Rd., 11/3/84	69
Lynn Stiffler	Lady Gamecock Inv., 1st Rd., 4/3/81	69
4. Amanda Strang	NCAA East Regional, 1st Rd., 5/6/10	70
Katie Burnett	LSU Golf Classic, 3rd Rd., 3/15/09	70
Katie Burnett	Cougar Classic, 2nd Rd., 9/15/08	70
Katie Burnett	Cougar Classic, 1st Rd., 9/14/08	70
Erika Holmen	Mason Rudolph Champ., 1st Rd., 9/14/07	70
Taylor Barrett	LSU/Cleveland Classic, 2nd Rd., 3/17/07	70
Kim Belk	TPC Inv., 1st Rd., 4/11/86	70

**Single-Season Top-5 Finishes**

1. Lynn Stiffler	1980-81	4
2. Robin Abare	1980-81	3
3. Debbie Eckroth	1988-89	2



**Robin Abare**

Year	Tourn.	Rds.	Strokes	Avg.	Low	Low	Low	Top	Top	Top	Best
					18	36	54	5	10	20	
1980-81	13	35	2828	80.80	74	156	236	23	3	4	3rd
1981-82	4	12	951	79.25	71	—	227	0	1	1	6th
1982-83	4	14	1162	83.00	NA	NA	NA	NA	NA	NA	NA
1983-84	9	25	2032	81.28	76	164	234	0	0	1	15th
Career	30	86	6973	81.08	71	156	227	23	4	6	3rd

**Dallas Ambrose**

Year	Tourn.	Rds.	Strokes	Avg.	Low	Low	Low	Top	Top	Top	Best
					18	36	54	5	10	20	
1998-99	5	14	1100	78.57	73	167	225	0	0	1	19th
1999-2000	3	9	710	78.89	77	—	233	0	0	1	15th
Career	8	17	1338	78.71	73	167	225	0	0	2	15th

**Apryl Arrants**

Year	Tourn.	Rds.	Strokes	Avg.	Low	Low	Low	Top	Top	Top	Best
					18	36	54	5	10	20	
1996-97	8	24	1940	80.83	75	—	234	0	0	0	21st
1997-98	9	27	2136	79.11	74	—	226	0	0	1	18th
1998-99	11	30	2354	78.47	73	149	226	0	1	1	6th
1999-2000	10	30	2361	78.70	72	—	224	0	2	2	9th
Career	38	111	8791	79.20	72	149	224	0	3	4	6th

**Lea Bagwell**

Year	Tourn.	Rds.	Strokes	Avg.	Low	Low	Low	Top	Top	Top	Best
					18	36	54	5	10	20	
1991-92	8	23	1796	78.09	74	—	227	1	2	4	4th
1992-93	5	15	1197	79.80	76	—	233	0	0	2	14th
1993-94	10	30	2386	79.53	73	—	224	0	1	3	7th
1994-95	6	18	1437	79.83	74	—	230	0	0	1	13th
Career	29	86	6816	79.26	73	—	224	1	3	10	4th

**Cecilia Barksdale**

Year	Tourn.	Rds.	Strokes	Avg.	Low	Low	Low	Top	Top	Top	Best
					18	36	54	5	10	20	
1995-96	2	6	487	81.17	76	—	242	0	0	0	69th

**Taylor Barrett**

Year	Tourn.	Rds.	Strokes	Avg.	Low	Low	Low	Top	Top	Top	Best
					18	36	54	5	10	20	
2006-07	8	17	1338	78.71	70	151	232	0	0	1	14th
2007-08	10	25	1965	78.60	71	—	226	0	0	1	14th
2008-09	10	30	2342	78.07	71	—	228	0	0	0	23rd
2009-10	9	24	1854	77.25	74	150	227	0	0	0	44th
Career	32	96	7499	78.11	70	150	226	0	0	2	14th

**Rachel Bates**

Year	Tourn.	Rds.	Strokes	Avg.	Low	Low	Low	Top	Top	Top	Best
					18	36	54	5	10	20	
1989-90	2	6	523	87.17	81	—	259	0	0	0	71st
1990-91	9	25	1984	79.36	72	151	234	1	1	4	2nd
1991-92	7	21	1665	79.29	74	—	232	0	0	2	16th
1992-93	10	30	2330	77.67	71	154	223	1	3	4	2nd
Career	28	82	6502	79.29	71	151	223	2	4	10	2nd

**Erica Battle**

Year	Tourn.	Rds.	Strokes	Avg.	Low	Low	Low	Top	Top	Top	Best
					18	36	54	5	10	20	
2002-03	5	13	1018	78.31	72	—	221	0	1	0	8th
2003-04	9	27	2109	78.11	71	—	224	1	0	1	5th
2004-05	8	24	1848	77.00	70	—	218	0	0	4	11th
2005-06	10	30	2285	76.17	72	—	223	0	1	2	8th
Career	32	94	7260	77.23	70	—	221	1	2	7	5th

**Kim Belk**

Year	Tourn.	Rds.	Strokes	Avg.	Low	Low	Low	Top	Top	Top	Best
					18	36	54	5	10	20	
1985-86	9	30	2380	79.33	70	—	224	0	1	0	6th
1986-87	9	27	2124	78.67	73	160	228	0	0	3	14th
1987-88	6	18	1443	80.17	71	—	231	0	1	3	6th
1988-89	10	30	2363	78.77	72	—	226	3	4	6	2nd
Career	34	105	8310	79.14	70	160	224	3	6	12	2

**Lynn Berstein**

Year	Tourn.	Rds.	Strokes	Avg.	Low	Low	Low	Top	Top	Top	Best
					18	36	54	5	10	20	
1983-84	3	9	797	88.56	82	—	255	0	0	0	78th
1984-85	1	3	256	85.33	84	—	256	0	0	0	62nd
Career	4	12	1053	87.75	82	—	255	0	0	0	62nd

**Kelly Brannon**

Year	Tourn.	Rds.	Strokes	Avg.	Low	Low	Low	Top	Top	Top	Best
					18	36	54	5	10	20	
1982-83	5	14	1190	85.00	NA	NA	NA	NA	NA	NA	NA
1983-84	11	31	2502	80.71	72	155	229	0	1	3	10th
1984-85	11	31	2418	78.00	71	156	224	0	1	6	8th
1986-87	9	27	2098	77.70	74	158	230	0	3	6	8th
Career	36	103	8208	79.69	71	155	224	1	5	15	3rd

**Katie Burnett**

Year	Tourn.	Rds.	Strokes	Avg.	Low	Low	Low	Top	Top	Top	Best
					18	36	54	5	10	20	
2008-09	10	30	2258	75.27	70	—	213	0	1	4	8th
2009-10	12	34	2502	73.59	67	142	210	2	3	9	1st
Career	22	64	4760	74.37	67	142	210	2	4	13	1st

**Corrine Carr**

Year	Tourn.	Rds.	Strokes	Avg.	Low	Low	Low	Top	Top	Top	Best
					18	36	54	5	10	20	
2008-09	8	24	1886	78.58	73	—	226	0	0	0	32nd
2009-10	12	34	2545	74.85	67	145	217	1	2	3	5th
Career	20	58	4431	76.39	67	145	217	1	2	3	5th

**Tiffany Catafygiotu**

Year	Tourn.	Rds.	Strokes	Avg.	Low	Low	Low	Top	Top	Top	Best
					18	36	54	5	10	20	
2001-02	4	12	972	81.00	75	—	231	0	0	1	19th
2002-03	11	31	2435	78.55	71	159	219	1	0	0	4th
2003-04	7	21	1673	79.67	75	—	235	0	0	1	17th
2004-05	8	24	1891	78.79	73	—	222	0	0	0	21st
Career	30	88	6971	79.22	71	158	219	1	0	2	4th

**Clarissa Childs**

Year	Tourn.	Rds.	Strokes	Avg.	Low	Low	Low	Top	Top	Top	Best
					18	36	54	5	10	20	
1992-93	9	27	2138	79.19	71	154	226	0	2	3	7th
1993-94	10	30	2338	77.93	71	—	224	3	3	7	1st
1994-95	11	34	2584	76.00	72	—	222	3	4	8	3rd
1995-96	11	32	2492	77.88	70	153	224	1	2	5	3rd
Career	41	123	9552	77.66	70	153	222	7	11	23	1st

**Jill Darr**

Year	Tourn.	Rds.	Strokes	Avg.	Low	Low	Low	Top	Top	Top	Best
					18	36	54	5	10	20	
1992-93	2	6	501	83.50	79	—	243	0	0	0	50th
1993-94	7	21	1786	85.05	75	—	241	0	0	0	45th
1994-95	1	3	263	87.67	84	—	263	0	0	0	73rd
Career	10	30	2550	85.00	75	—	241	0	0	0	45th

**Abby Derman**

Year	Tourn.	Rds.	Strokes	Avg.	Low	Low	Low	Top	Top	Top	Best
					18	36	54	5	10	20	
1997-98	8	21	1763	83.95	79	—	247	0	0	0	41st
1999-2000	2	6	496	82.67	78	—	247	0	0	0	48th
2000-01	4	12	971	80.92	78	—	233	0	0	1	17th
Career	14	39	3230	82.82	78	—	233</				



**Debbie Eckroth**

Year	Tourn.	Rds.	Strokes	Avg.	Low	Low	Low	Top	Top	Top	Best
					18	36	54	5	10	20	
1988-89	7	21	1639	78.05	72	—	222	2	2	4	1st
1989-90	12	37	2865	77.43	71	—	225	5	8	9	2nd
1990-91	9	25	1955	78.20	73	157	226	0	4	7	6th
1991-92	9	27	2076	76.89	72	—	224	0	6	7	6th
Career	37	110	8535	77.59	71	157	222	7	20	27	1st

**Cecilia Ekelundh**

Year	Tourn.	Rds.	Strokes	Avg.	Low	Low	Low	Top	Top	Top	Best
					18	36	54	5	10	20	
1998-99	7	19	1465	77.11	73	151	227	1	2	3	5th

**Suzie Ellison**

Year	Tourn.	Rds.	Strokes	Avg.	Low	Low	Low	Top	Top	Top	Best
					18	36	54	5	10	20	
1980-81	2	5	414	82.80	NA	NA	NA	NA	NA	NA	NA
1981-82	8	15	1220	81.33	76	—	232	0	0	2	16th
1982-83	5	14	1153	82.36	78	159	247	NA	NA	NA	NA
Career	12	34	2787	81.97	76	159	232	0	0	2	16th

**Camila Faaborg-Andersen**

Year	Tourn.	Rds.	Strokes	Avg.	Low	Low	Low	Top	Top	Top	Best
					18	36	54	5	10	20	
1996-97	10	30	2332	77.73	71	—	225	0	3	4	6th

**Karin Fries**

Year	Tourn.	Rds.	Strokes	Avg.	Low	Low	Low	Top	Top	Top	Best
					18	36	54	5	10	20	
1994-95	7	22	1779	80.86	74	—	237	0	0	0	25th
1995-96	8	23	1871	81.35	74	160	230	0	0	0	21st
1996-97	8	24	1914	79.75	75	—	234	0	0	1	20th
Career	23	69	5564	80.64	74	160	230	0	0	1	20th

**Liz Galbraith**

Year	Tourn.	Rds.	Strokes	Avg.	Low	Low	Low	Top	Top	Top	Best
					18	36	54	5	10	20	
1984-85	8	23	1910	83.04	78	175	241	0	0	0	47th
1985-86	5	15	1231	82.07	76	—	237	0	0	0	37th
1986-87	3	9	715	79.44	75	—	235	0	0	1	19th
1987-88	9	27	2201	81.52	72	—	235	0	1	1	7th
Career	25	74	6057	81.85	72	175	235	0	1	2	7th

**Adrienne Gautreaux**

Year	Tourn.	Rds.	Strokes	Avg.	Low	Low	Low	Top	Top	Top	Best
					18	36	54	5	10	20	
2001-02	11	34	2596	76.35	69	—	218	2	4	6	4th
2002-03	11	32	2448	76.50	72	—	223	0	1	6	8th
2003-04	11	34	2531	74.44	69	—	218	2	3	8	2nd
Career	33	100	7575	75.75	69	—	218	4	8	20	2nd

**Sofia Gervas**

Year	Tourn.	Rds.	Strokes	Avg.	Low	Low	Low	Top	Top	Top	Best
					18	36	54	5	10	20	
1988-89	4	12	1002	83.50	81	—	246	0	0	0	45th
1989-90	9	27	2197	81.37	73	—	235	0	2	0	8th
1990-91	9	25	2035	81.40	76	161	233	0	1	4	7th
1991-92	4	12	975	81.25	77	—	236	0	0	0	23rd
Career	26	76	6209	81.70	73	161	233	0	3	4	7th

**Margaret Hickey**

Year	Tourn.	Rds.	Strokes	Avg.	Low	Low	Low	Top	Top	Top	Best
					18	36	54	5	10	20	
1989-90	3	9	767	85.22	80	—	252	0	0	1	17th
1990-91	1	3	250	83.33	NA	NA	250	NA	NA	NA	NA
1991-92	6	18	1429	79.39	73	—	232	0	0	2	18th
1992-93	3	9	752	83.56	76	—	239	0	0	1	20th
Career	13	39	3198	82.00	73	—	232	0	0	4	17th

**Erika Holmen**

Year	Tourn.	Rds.	Strokes	Avg.	Low	Low	Low	Top	Top	Top	Best
					18	36	54	5	10	20	
2007-08	6	15	1179	78.60	70	—	225	0	0	0	48th

**Libby Howard**

Year	Tourn.	Rds.	Strokes	Avg.	Low	Low	Low	Top	Top	Top	Best
					18	36	54	5	10	20	
1994-95	3	9	733	81.44	79	—	241	0	0	0	47th
1995-96	9	26	2045	78.65	70	156	226	0	1	2	10th
1996-97	9	27	2181	80.78	73	—	228	0	0	2	14th
1997-98	9	27	2174	80.52	77	—	234	0	0	1	17th
Career	30	89	7133	80.15	70	156	226	0	1	5	10th

**Allison Jarrett**

Year	Tourn.	Rds.	Strokes	Avg.	Low	Low	Low	Top	Top	Top	Best
					18	36	54	5	10	20	
1988-89	4	12	1020	85.00	78	—	242	0	0	0	30th
1989-90	2	6	513	85.50	84	—	249	0	0	0	45th
Career	6	18	1533	85.17	78	—	242	0	0	0	30th

**Tara Joy**

Year	Tourn.	Rds.	Strokes	Avg.	Low	Low	Low	Top	Top	Top	Best
					18	36	54	5	10	20	
1991-92	3	9	728	80.89	74	—	230	1	1	1	5th
1992-93	7	21	1655	78.81	74	—	233	0	0	2	15th
Career	10	30	2383	79.43	74	—	230	1	1	3	5th

**Kandi Kessler**

Year	Tourn.	Rds.	Strokes	Avg.	Low	Low	Low	Top	Top	Top	Best
					18	36	54	5	10	20	
1981-82	7	21	1631	77.67	73	—	229	0	2	4	9th

**Sarah Kidd**

Year	Tourn.	Rds.	Strokes	Avg.	Low	Low	Low	Top	Top	Top	Best
					18	36	54	5	10	20	
1998-99	4	11	929	84.45	79	182	243	0	0	0	52nd
1999-2000	1	3	243	81.00	80	—	243	0	0	0	40th
2000-01	8	25	1990	79.60	74	—	226	0	0	1	20th
2001-02	1	3	245	81.67	78	—	245	0	0	0	41st
Career	14	42	3407	81.12	74	182	226	0	0	1	20th

**Reetta Laakkonen**

Year	Tourn.	Rds.	Strokes	Avg.	Low	Low	Low	Top	Top	Top	Best
					18	36	54	5	10	20	
2000-01	3	9	761	84.56	73	—	236	0	0	0	53rd
2001-02	10	31	2411	77.77	71	—	223	0	0	1	18th
Career	13	40	3172	79.30	71	—	223	0	0	1	18th

**Rebekah Lee**

Year	Tourn.	Rds.	Strokes	Avg.	Low	Low	Low	Top	Top	Top	Best
					18	36	54	5	10	20	
1993-94	6	18	1427	79.28	73	—	226	0	0	1	12th
1994-95	10	31	2450	79.03	73	—	226	0	0	2	12th
1995-96	11	32	2539	79.34	73	154	227	0	1	3	8th
1996-97	10	31	2444	78.84	72	—	225	0	2	4	6th
Career	37	112	8860	79.11	72	154	225	0	3	10	6th

**Siew Ai Lim**

Year	Tourn.	Rds.	Strokes	Avg.	Low	Low	Low	Top	Top	Top	Best
					18	36	54	5	10	20	
1992-93	11	33	2575	78.03	71	156	224	0	4	7	6th
1993-94	11	34	2603	76.56	71	—	224	3	6	9	2nd
1994-95	10	31	2305	74.35	70	—	210	4	10	10	1st
1995-96	11	32	2427	75.84	71	—	218	2	4	9	2nd
Career	43	130	9910	76.23	70	156	210	9	24	35	1st

**Julie Loebis**

Year	Tourn.	Rds.	Strokes	Avg.	Low	Low	Low	Top	Top	Top	Best
					18	36					





**Emma Lofgren**

Year	Tourn.	Rds.	Strokes	Avg.	Low 18	Low 36	Low 54	Top 5	Top 10	Top 20	Best Finish
1996-97	10	30	2389	79.63	74	—	227	0	1	1	10th
1997-98	9	27	2117	78.41	71	—	229	0	2	3	7th
1998-99	11	31	2388	77.03	72	147	222	2	3	5	3rd
1999-2000	9	30	2347	78.23	72	—	225	0	1	2	9th
Career	39	118	9241	78.31	71	147	222	2	7	11	3rd

**Elizabeth Macfie**

Year	Tourn.	Rds.	Strokes	Avg.	Low 18	Low 36	Low 54	Top 5	Top 10	Top 20	Best Finish
1985-86	10	30	2307	76.90	73	—	225	2	4	6	3rd
1986-87	7	21	1630	77.62	71	—	222	1	3	5	3rd
1987-88	9	27	2118	78.44	71	—	225	1	3	6	3rd
Career	26	78	6055	77.63	71	—	222	4	10	17	3rd

**Laura McCaslin**

Year	Tourn.	Rds.	Strokes	Avg.	Low 18	Low 36	Low 54	Top 5	Top 10	Top 20	Best Finish
2003-04	5	15	1183	78.87	72	—	224	0	0	1	17th
2004-05	2	6	492	82.00	81	—	245	0	0	0	33rd
2005-06	7	21	1638	78.00	71	—	219	0	1	2	10th
Career	14	42	3313	78.88	71	—	219	0	1	3	10th

**Kristy McPherson**

Year	Tourn.	Rds.	Strokes	Avg.	Low 18	Low 36	Low 54	Top 5	Top 10	Top 20	Best Finish
1999-2000	10	30	2312	77.07	72	—	219	1	2	5	2nd
2000-01	11	34	2510	73.82	67	—	207	5	8	9	1st
2001-02	11	34	2502	73.59	69	—	209	5	7	9	1st
2002-03	11	31	2276	73.42	68	142	209	7	8	9	1st
Career	43	129	9600	74.42	67	142	207	18	25	32	1st

**Megan Miller**

Year	Tourn.	Rds.	Strokes	Avg.	Low 18	Low 36	Low 54	Top 5	Top 10	Top 20	Best Finish
2003-04	3	9	715	79.44	73	—	226	0	0	0	35th
2004-05	1	3	241	80.33	80	—	241	0	0	0	99th
Career	4	12	956	79.67	73	—	226	0	0	0	35th

**Lotte Moeller**

Year	Tourn.	Rds.	Strokes	Avg.	Low 18	Low 36	Low 54	Top 5	Top 10	Top 20	Best Finish
1997-98	6	18	1395	77.50	74	—	226	0	0	3	11th
1998-99	11	31	2409	77.71	70	150	223	1	3	6	1st
Career	17	49	3804	77.63	70	150	223	1	3	9	1st

**Camila Mori**

Year	Tourn.	Rds.	Strokes	Avg.	Low 18	Low 36	Low 54	Top 5	Top 10	Top 20	Best Finish
2005-06	6	18	1399	77.72	71	—	227	0	0	0	31st
2006-07	9	27	2070	76.67	72	—	218	0	0	2	12th
2007-08	9	28	2158	77.07	72	—	225	0	0	0	24th
Career	24	73	5627	77.08	71	—	218	0	0	2	12th

**Marianne Morris**

Year	Tourn.	Rds.	Strokes	Avg.	Low 18	Low 36	Low 54	Top 5	Top 10	Top 20	Best Finish
1983-84	10	29	2345	80.86	76	156	232	0	1	3	10th
1984-85	10	28	2206	78.79	74	—	227	0	4	4	7th
1985-86	11	31	2370	76.45	68	—	221	1	6	6	4th
1986-87	11	33	2513	76.15	70	155	220	3	5	9	1st
Career	42	121	9434	77.97	68	155	220	4	16	22	1st

**Julie Norris**

Year	Tourn.	Rds.	Strokes	Avg.	Low 18	Low 36	Low 54	Top 5	Top 10	Top 20	Best Finish
1992-93	2	6	514	85.67	83	—	254	0	0	0	36th
1993-94	4	12	980	81.67	76	—	240	0	0	0	24th
1994-95	10	30	2386	79.53	73	—	230	0	0	3	14th
1995-96	1	3	238	79.33	76	—	238	0	0	0	59th
Career	17	51	4118	80.75	73	—	230	0	0	3	14th

**Jenna Pearson**

Year	Tourn.	Rds.	Strokes	Avg.	Low 18	Low 36	Low 54	Top 5	Top 10	Top 20	Best Finish
2003-04	7	21	1650	78.57	72	—	227	0	0	1	15th
2004-05	11	34	2619	77.03	69	—	217	0	0	3	14th
2005-06	10	30	2285	76.17	70	—	221	0	2	2	6th
2006-07	10	29	2169	74.79	66	—	216	3	3	6	5th
Career	38	114	8723	76.52	66	—	216	3	5	12	5th

**Sandy Persinger**

Year	Tourn.	Rds.	Strokes	Avg.	Low 18	Low 36	Low 54	Top 5	Top 10	Top 20	Best Finish
1983-84	9	25	2000	80.00	76	—	236	0	0	3	11th
1984-85	1	3	245	81.67	80	—	245	0	0	0	70th
Career	10	28	2245	80.18	76	—	236	0	0	3	11th

**GayLynn Pohlman**

Year	Tourn.	Rds.	Strokes	Avg.	Low 18	Low 36	Low 54	Top 5	Top 10	Top 20	Best Finish
1983-84	1	2	180	90.00	90	180	—	0	0	0	90th
1984-85	3	8	682	85.25	82	173	252	0	0	0	54th
1986-87	1	3	244	81.33	80	—	244	0	0	0	49th
Career	5	13	1106	85.08	80	173	244	0	0	0	49th

**Laura Raffo**

Year	Tourn.	Rds.	Strokes	Avg.	Low 18	Low 36	Low 54	Top 5	Top 10	Top 20	Best Finish
2004-05	3	9	733	81.44	77	—	233	0	0	0	43rd
2005-06	8	24	1873	78.04	73	—	226	0	0	0	28th
2006-07	6	11	885	80.45	72	156	236	0	0	0	39th
2007-08	4	8	629	78.63	72	—	223	0	0	0	21st
Career	21	52	4120	79.23	72	156	223	0	0	0	21st

**Sue Redard**

Year	Tourn.	Rds.	Strokes	Avg.	Low 18	Low 36	Low 54	Top 5	Top 10	Top 20	Best Finish
1985-86	4	12	956	79.67	74	—	232	0	0	1	16th
1986-87	3	8	638	79.75	76	154	234	1	1	1	5th
1987-88	4	12	984	82.00	75	—	236	0	0	1	15th
Career	11	32	2578	80.56	74	154	232	1	1	3	5th

**Stefanie Reynolds**

Year	Tourn.	Rds.	Strokes	Avg.	Low 18	Low 36	Low 54	Top 5	Top 10	Top 20	Best Finish
1998-99	11	31	2440	78.71	73	158	225	0	0	1	17th
1999-2000	9	27	2127	78.78	71	—	225	0	0	2	12th
2000-01	7	22	1729	78.59	72	—	227	0	0	0	22nd
Career	27	80	6296	78.70	71	158	225	0	0	3	12th

**Jan Rikard**

Year	Tourn.	Rds.	Strokes	Avg.	Low 18	Low 36	Low 54	Top 5	Top 10	Top 20	Best Finish
1980-81	13	23	1852	80.52	74	150	229	1	3	3	3rd
1981-82	6	18	1402	77.89	69	—	219	2	2	3	1st
Career	19	41	3254	79.37	69	159	219	3	5	6	1st

**Aileen Robertson**

Year	Tourn.	Rds.	Strokes	Avg.	Low 18	Low 36	Low 54	Top 5	Top 10	Top 20	Best Finish
1987-88	5	15	1272	84.80	76	—	246	0	0	1	14th
1988-89	4	12	975	81.25	77	—	236	0	1	1	10th
1989-90	11	33	2622	79.45	72	—	225	1	2	6	2nd
1990-91	9	25	1950	78.00	70	—	223	2	4	8	3rd
Career	29	85	6819	80.22	70	—	223	3	7	16	2nd

**Marci Robinson**

Year	Tourn.	Rds.	Strokes	Avg.	Low 18	Low 36	Low 54	Top 5	Top 10	Top 20	Best Finish
2000-01	10	31	2461	79.39	73	—	226	0	0	1	20th
2001-02	10	31	2435	78.55	73	—	224	0	0	1	18th
2002-03	10	31	2425	78.23	70	154	226	0	0	0	28th
2003-04	8	24	1888	78.67	73	—	225	0	1	1	7th
Career	38	117	9209	78.71	70	154	224	0	1	3	7th



**Caroline Rominger**

Year	Tourn.	Rds.	Strokes	Avg.	Low 18	Low 36	Low 54	Top 5	Top 10	Top 20	Best Finish
2004-05	9	27	2097	77.67	72	—	225	1	1	2	3rd

**Kristin Ruble**

Year	Tourn.	Rds.	Strokes	Avg.	Low 18	Low 36	Low 54	Top 5	Top 10	Top 20	Best Finish
1999-2000	3	9	729	81.00	79	—	241	0	0	0	45th
2000-01	2	6	492	82.00	79	—	243	0	0	0	34th
Career	5	15	1221	81.40	79	—	241	0	0	0	34th

**Cathy Rumfelt**

Year	Tourn.	Rds.	Strokes	Avg.	Low 18	Low 36	Low 54	Top 5	Top 10	Top 20	Best Finish
1987-88	10	30	2456	81.87	75	—	235	0	1	1	9th
1988-89	9	27	2155	79.81	74	—	231	1	3	4	4th
1989-90	11	33	2659	80.58	74	—	234	0	1	4	7th
Career	30	90	7270	80.78	74	—	231	1	5	9	4th

**Cayci Ruppe**

Year	Tourn.	Rds.	Strokes	Avg.	Low 18	Low 36	Low 54	Top 5	Top 10	Top 20	Best Finish
2008-09	5	14	1111	79.36	74	—	229	0	0	0	32nd

**Lise Russell**

Year	Tourn.	Rds.	Strokes	Avg.	Low 18	Low 36	Low 54	Top 5	Top 10	Top 20	Best Finish
1981-82	7	21	1670	79.52	74	—	227	0	1	1	6th
1982-83	1	3	242	80.67	NA	—	242	0	1	1	6th
1983-84	7	18	1362	75.67	74	154	233	0	2	3	8th
Career	15	42	3274	77.95	74	154	227	0	4	5	6th

**Lisa Scally**

Year	Tourn.	Rds.	Strokes	Avg.	Low 18	Low 36	Low 54	Top 5	Top 10	Top 20	Best Finish
1982-83	4	11	950	86.36	85	—	261	0	0	0	78th

**Katy Schlotman**

Year	Tourn.	Rds.	Strokes	Avg.	Low 18	Low 36	Low 54	Top 5	Top 10	Top 20	Best Finish
1997-98	2	6	573	95.50	91	—	283	0	0	0	65th

**Kim Simmons**

Year	Tourn.	Rds.	Strokes	Avg.	Low 18	Low 36	Low 54	Top 5	Top 10	Top 20	Best Finish
1981-82	1	3	251	83.67	82	—	251	0	0	0	72nd
1982-83	4	12	993	82.75	83	—	244	0	0	1	12th
Career	5	15	1244	82.93	82	—	244	0	0	1	12th

**Whitney Simons**

Year	Tourn.	Rds.	Strokes	Avg.	Low 18	Low 36	Low 54	Top 5	Top 10	Top 20	Best Finish
2004-05	7	21	1634	77.81	71	—	224	0	0	2	12th
2005-06	10	30	2277	75.90	71	—	219	0	2	5	6th
2006-07	9	20	1556	77.80	73	158	222	0	0	0	39th
2007-08	12	30	2343	78.10	70	—	224	0	0	0	34th
Career	38	101	7810	77.33	70	158	219	0	2	7	6th

**K Smith**

Year	Tourn.	Rds.	Strokes	Avg.	Low 18	Low 36	Low 54	Top 5	Top 10	Top 20	Best Finish
1985-86	1	3	259	86.33	84	—	259	0	0	0	64th

**Monica Smith**

Year	Tourn.	Rds.	Strokes	Avg.	Low 18	Low 36	Low 54	Top 5	Top 10	Top 20	Best Finish
1997-98	5	15	1336	89.07	82	—	258	0	0	0	64th

**Kim Staples**

Year	Tourn.	Rds.	Strokes	Avg.	Low 18	Low 36	Low 54	Top 5	Top 10	Top 20	Best Finish
1983-84	5	14	1212	86.57	81	167	255	0	0	0	54th

**Lynn Stiffler**

Year	Tourn.	Rds.	Strokes	Avg.	Low 18	Low 36	Low 54	Top 5	Top 10	Top 20	Best Finish
1980-81	13	35	2730	78.00	69	154	218	4	6	7	1st
1981-82	1	3	243	81.00	76	—	243	0	0	0	61st
Career	14	38	2973	78.24	69	154	218	4	6	7	1st

**Amanda Strang**

Year	Tourn.	Rds.	Strokes	Avg.	Low 18	Low 36	Low 54	Top 5	Top 10	Top 20	Best Finish
2009-10	12	34	2575	75.73	70	144	220	1	1	1	3rd

**Meredith Swanson**

Year	Tourn.	Rds.	Strokes	Avg.	Low 18	Low 36	Low 54	Top 5	Top 10	Top 20	Best Finish
2009-10	5	12	942	78.50	73	154	227	0	0	0	46th

**Meredith Taylor**

Year	Tourn.	Rds.	Strokes	Avg.	Low 18	Low 36	Low 54	Top 5	Top 10	Top 20	Best Finish
2007-08	2	6	505	84.17	76	—	241	0	0	0	60th
2008-09	8	24	1868	77.83	74	—	229	0	0	0	40th
Career	10	30	2373	79.10	74	—	229	0	0	0	40th

**Kacy Thompson**

Year	Tourn.	Rds.	Strokes	Avg.	Low 18	Low 36	Low 54	Top 5	Top 10	Top 20	Best Finish
1999-2000	9	27	2134	79.04	73	—	227	0	1	2	6th
2000-01	11	34	2689	79.09	71	—	222	0	0	2	15th
2001-02	11	34	2637	77.56	70	—	221	0	1	3	7th
2002-03	8	22	1710	77.73	74	153	228	1	1	1	1st
Career	39	117	9170	78.38	70	153	221	1	3	8	1st

**Kory Thompson**

Year	Tourn.	Rds.	Strokes	Avg.	Low 18	Low 36	Low 54	Top 5	Top 10	Top 20	Best Finish
2000-01	6	18	1445	80.28	74	—	224	0	0	0	21st
2001-02	4	12	951	79.25	73	—	235	0	0	0	35th
2002-03	6	15	1144	76.27	73	157	221	1	2	2	4th
2003-04	8	24	1931	80.46	74	—	232	0	0	0	27th
Career	24	69	5471	79.29	73	157	221	1	2	2	4th

**Truie Timmons**

Year	Tourn.	Rds.	Strokes	Avg.	Low 18	Low 36	Low 54	Top 5	Top 10	Top 20	Best Finish
1984-85	11	31	2420	78.06	72	149	226	2	2	4	3rd
1985-86	7	21	1643	78.24	72	—	225	1	2	4	4th
1986-87	10	31	2375	76.61	72	—	222	3	5	7	2nd
1987-88	3	9	706	78.44	75	—	232	0	0	2	14th
Career	31	92	7144	77.65	72	149	222	6	9	17	2nd

**Bénédicte Toumpsin**

Year	Tourn.	Rds.	Strokes	Avg.	Low 18	Low 36	Low 54	Top 5	Top 10	Top 20	Best Finish
2006-07	12	28	2117	75.61	69	162	215	1	1	2	2nd
2007-08	13	34	2517	74.03	68	—	214	5	5	6	1st
2008-09	10	30	2217	73.90	68	—	209	2	2	6	1st
2009-10	10	30	2249	74.96	68	154	217	0	0	4	15th
Career	45	122	9100	74.59	68	154	209	8	8	18	1st

**Vikki Valentine**

Year	Tourn.	Rds.	Strokes	Avg.	Low 18	Low 36	Low 54	Top 5	Top 10	Top 20	Best Finish
1988-89	9	27	2221	82.26	75	—	237	0	1	3	7th
1989-90	11	33	2619	79.36	74	—	228	1	4	4	4th
1990-91	9	24	1879	78.29	73	149	226	2	4	6	1st
1991-92	9	27	2088	77.33	71	—	222	3	3	6	3rd
Career	38	111	8807	79.34	71	149	222	6	12	19	1st



**Beth Ward**

Year	Tourn.	Rds.	Strokes	Avg.	Low			Top			Best Finish
					18	36	54	5	10	20	
1983-84	5	15	1309	87.27	78	—	251	0	0	0	48th
1984-85	7	19	1554	81.79	78	162	239	0	0	0	26th
Career	12	34	2863	84.21	78	162	239	0	0	0	26th

**Taylor Weaver**

Year	Tourn.	Rds.	Strokes	Avg.	Low			Top			Best Finish
					18	36	54	5	10	20	
2008-09	1	3	232	77.33	76	—	232	0	0	0	81st
2009-10	1	2	161	80.50	80	161	—	0	0	0	88th
Career	2	5	393	78.60	76	161	232	0	0	0	81st

**Katie Weiss**

Year	Tourn.	Rds.	Strokes	Avg.	Low			Top			Best Finish
					18	36	54	5	10	20	
1993-94	3	9	773	85.89	82	—	253	0	0	0	64th
1994-95	5	16	1318	82.38	77	—	242	0	0	0	42nd
1995-96	5	15	1208	80.53	74	—	230	0	0	0	22nd
1996-97	2	6	492	82.00	78	—	241	0	0	0	59th
Career	15	46	3791	82.41	74	—	230	0	0	0	22nd

**Lee Whittemore**

Year	Tourn.	Rds.	Strokes	Avg.	Low			Top			Best Finish
					18	36	54	5	10	20	
1980-81	13	35	2828	80.80	76	163	239	1	1	3	4th
1981-82	2	6	472	78.67	76	—	233	0	0	1	16th
Career	15	41	3300	80.49	76	163	233	1	1	4	4th

**Blythe Worley**

Year	Tourn.	Rds.	Strokes	Avg.	Low			Top			Best Finish
					18	36	54	5	10	20	
2004-05	6	18	1419	78.83	73	—	226	0	0	0	26th
2005-06	6	18	1382	76.78	73	—	222	0	0	0	36th
2006-07	11	26	1998	76.85	70	149	218	0	2	2	7th
2007-08	13	34	2627	77.26	73	—	222	0	0	1	15th
Career	36	96	7426	77.35	70	149	218	0	2	3	7th

**Kerry Zebick**

Year	Tourn.	Rds.	Strokes	Avg.	Low			Top			Best Finish
					18	36	54	5	10	20	
1992-93	8	24	1903	79.29	73	158	221	1	0	2	4th
1993-94	4	12	962	80.17	69	—	228	0	1	1	7th
Career	12	36	2865	79.58	69	158	221	1	1	3	4th



# Former Gamecocks on Tour

## Kristy McPherson



**LPGA Tour: 2007-present**

2009 U.S. Solheim Cup Team  
 Top-10 finishes in first three majors of 2009  
 T-2 at Kraft Nabisco; T-5 at LPGA Championship  
 T-7 at Women's British Open

**Duramed FUTURES Tour: 2003-2006**

Two career wins; 14 career top-10 finishes  
 Never missed a cut in 60 events entered

**University of South Carolina: 1999-2003**

Two-time SEC Champion (2001, 2002)  
 School-record six career wins  
 School-record 18 career top-five finishes  
 School-record 25 career top-10 finishes

## Siew-Ai Lim



**LPGA Tour: 1999-2008**

T-2nd at 2004 Kellogg/Keebler Classic  
 Earned career-best \$177,377 in 2004

**Duramed FUTURES Tour: 1997-2000**

Won 2000 Carolina National FUTURES Classic  
 15 career top-10 finishes

**University of South Carolina: 1993-1997**

First Gamecock to win NCAA Regional title (1995)  
 Nine career top-five finishes  
 Career average of 76.23, fifth-best in school history  
 Only Gamecock to compete in four NCAA Championships  
 T-9th at 1995 NCAA Championship; best finish in school history



**Clarissa Childs**  
 LPGA  
 Duramed FUTURES



**Debbie Eckroth**  
 Duramed FUTURES



**Cecilia Ekelundh**  
 Ladies European



**Adrienne Gautreaux**  
 Duramed FUTURES



**Tara Joy**  
 Duramed FUTURES



**Siew-Ai Lim**  
 LPGA  
 Duramed FUTURES



**Rebekah Lee-Owens**  
 Duramed FUTURES



**Kristy McPherson**  
 LPGA  
 Duramed FUTURES



**Camila Mori**  
 Duramed FUTURES



**Marianne Morris**  
 LPGA  
 Duramed FUTURES



**Jenna Pearson**  
 Duramed FUTURES



**Aileen Robertson**  
 Duramed FUTURES



**Vikki Valentine**  
 Duramed FUTURES



**Katie Weiss**  
 Duramed FUTURES