



# South Carolina Media Outlets

## Print

### Associated Press

1311 Marion Street  
Columbia, S.C. 29201  
(O): 803-799-5510 (F): 803-252-2913  
Pete Iacobelli (piacobelli@ap.org)

### The State

Box 1333  
Columbia, S.C. 29202  
(O): 803-771-8470 (F): 803-771-8613  
Kent Babb (kbabb@thestate.com)  
Beat: Seth Emerson (semerson@thestate.com) (C): 803-622-8820  
Bob Gillespie (bgillespie@thestate.com)  
SE: Rick Millians (rmillians@thestate.com)  
C: Ron Morris (rmorris@thestate.com)  
Joe Person (jperson@thestate.com)  
Bob Spear (bspear@thestate.com)

### Charleston Post & Courier

134 Columbus Street  
Charleston, S.C. 29403  
(O): 843-937-5598 (F): 843-937-5579  
SE: Ken Burger (kburger@postandcourier.com)  
Beat: Travis Haney (thaney@postandcourier.com) (C): 404-273-2583

### Greenville News

Box 1688  
Greenville, S.C. 29602  
(O): 864-298-4239 (F): 864-298-4395  
Beat: Rick Scoppe (rscoppejr@sc.rr.com)  
(H): 803-256-2588  
C: Bart Wright (rbwright@greenvillenews.com)

### Atlanta Journal Constitution

72 Marietta Street NW  
Atlanta, Ga. 30302  
(O): 404-522-4141  
Tony Barnhart (tbarnhart@ajc.com)

### Anderson Independent-Mail

Box 2507  
Anderson, S.C. 29622  
(O): 864-260-1267 (F): 864-260-1267  
SE: John Brasier (brasier@independentmail.com)

### Augusta Chronicle-Herald

725 Broad Street  
Augusta, Ga. 30913  
(O): 706-823-3337 (F): 706-823-3408  
SE: John Boyette (jboyette@augustachronicle.com)  
Scott Michaux (scott.michaux@augustachronicle.com)

### Charlotte Observer

Box 30308  
Charlotte, N.C. 28230  
(O): 704-358-5118 (F): 704-358-5110  
Ron Green, Jr. (rgreenjr@charlotteobserver.com)  
Stan Olson (solson@charlotteobserver.com)

### Florence Morning News

P.O. Box 100528  
Florence, S.C. 29501  
(O): 843-317-7271 (F): 843-317-7292  
SE: Mark Haselden (mhaselden@florencenews.com)

### Hilton Head Island Packet

Box 5727  
Hilton Head, S.C. 29577  
(O): 843-706-8121 (F): 843-706-3070  
SE: Jeff Kidd (jkidd@islandpacket.com)

### Myrtle Beach Sun News

P.O. Box 406  
Myrtle Beach, S.C. 29577  
(O): 843-626-0200  
SE: Rich Griffiths (rgriffiths@thesunnews.com)

### Orangeburg Times & Democrat

1010 Broughton Street  
Orangeburg, S.C. 29116  
(O): 803-534-1060 (F): 803-533-5595  
SE: Thomas Grant, Jr. (tgrant@timesanddemocrat.com)

### Rock Hill Herald-Journal

Box 11707  
Rock Hill, S.C. 29731  
(O): 803-329-4074 (F): 803-329-4021  
Barry Byers (bbyers@heraldonline.com)  
Beat: David Cloninger (dcloninger@heraldonline.com)  
SE: Gary McCann (gmccann@heraldonline.com)

### Spartanburg Herald-Journal

Box 1657  
Spartanburg, S.C. 29304  
(O): 864-582-4511 (F): 803-594-6350  
Beat: Matt Cobbs (matt.cobbs@shj.com) (C): 706-254-4255  
SE: Burke Noel (burke.noel@shj.com)

## Television

### WIS-TV (Channel 10)

1111 Bull Street, Columbia, S.C. 29202  
(O): 803-758-1288 (F): 803-758-1278  
Rick Henry (rhenry@wistv.com)

### WLTX-TV (Channel 19)

6027 Garners Ferry Rd, Columbia, S.C. 29205  
(O): 803-647-0233 (F): 803-776-1791  
Bob Shields (bobshields@wltx.com)

### WOLO-TV (Channel 25)

Box 4217, Columbia, S.C. 29204  
(O): 803-754-7525 (F): 803-691-4015  
Tim Hill (timhill@abcolumbia.com)

### WCSC-TV (Channel 5)

Box 186, Charleston, S.C. 29402  
(O): 843-402-5750 (F): 843-402-5591  
Craig Birnbach (cbirnbach@live5news.com)

### WBTW-TV (Channel 13)

3430 TV Road, Florence, S.C. 29501  
(O): 803-317-1313

### WYFF-TV (Channel 4)

Box 788, Greenville, S.C. 29602  
(O): 864-240-5265 (F): 864-240-5297  
Geoff Hart (ghart@wyff4.com)

### WPDE-TV (Channel 15)

Box 51150, Myrtle Beach, S.C. 29579  
(O): 843-234-9733 (F): 843-234-9739  
Rick Chrampanis (15sports@wpde.com)

### WCBD-TV (Channel 2)

210 West Coleman Blvd.,  
Mt. Pleasant, S.C. 29464  
(O): 843-216-4894 (F): 843-884-6624  
Brendan Clark (bclark@wcdb.com)

### WCIV-TV (Channel 4)

P.O. Box 22165, Mt. Pleasant, S.C. 29413  
(O): 843-884-8513 (F): 843-849-2519  
Josh Morton (josh.morton@wciv.com)

### WRDW-TV (Channel 12)

Box 1212, North Augusta, S.C. 30913  
(O): 803-278-3111 (F): 803-442-4561  
Prentice Elliott (prentice.elliott@wrwd.com)

### WSPA-TV (Channel 7)

Box 1717, Spartanburg, S.C. 29301  
(O): 864-587-4497 (F): 864-587-4480  
Pete Yanity (pyanity@wspa.com)

## Radio

### Citadel Broadcasting

P.O. Box 5106, Columbia, S.C. 29250  
(O): 803-766-7600 (F): 803-796-9291  
Brent Johnson (bjohnson@b106fm.com)  
GM: William McElveen (bill.mcelveen@citcomm.com)

### WISW-AM (1320 AM)

(O): 803-796-9975 (F): 803-466-6453  
Mike Morgan (primetime1320@aol.com)

### WVOC (560 AM)

Box 21567, Columbia, S.C. 29221  
(O): 803-343-1100  
Christopher Thompson (sports@wvoc.com)

### WCOS-AM (1400 AM)

Box 21567, Columbia, S.C. 29204  
Teddy Heffner (teddy@1400theteam.com)

### ESPN (93.1FM)

Rich Taylor (rt@espnscolumbia.com)  
(C): 803-361-2309

### South Carolina News Network

3710 Landmark, Dr., Suite 100  
Columbia, S.C. 29204  
(O): 803-790-4305 (F): 803-790-4309  
Phil Kornblut (philtalk@aol.com)

### Gamecock Sports Properties

Elizabeth McMillan, GM (lmcmillan@learfield.com)  
P.O. Box 50306, Columbia, S.C. 29250  
(O): 803-777-7895 (F): 803-777-7376

### Mike Morgan, Play-by-Play

(primetime1320@aol.com)  
(O): 803-796-9975 (F): 803-466-6453

### Casey Manning, Color Analyst

(O): 803-929-6270

## Campus/ Specialty

### The Gamecock

1400 Greene Street  
Columbia, S.C. 29208  
(O): 803-777-7182 (F): 803-777-6482

### Spurs & Feathers

Box 8055  
Columbia, S.C. 29202  
(O): 803-256-1789 (F): 803-256-1789  
Dexter Hudson (spursusc@aol.com)

### Basketball Video Coordinator

Kris DeBlasio (krisd@gwm.sc.edu)  
803-777-3284

### Multi-Media Services Coordinator

Paul Danna (danna@gwm.sc.edu)  
803-777-5335

# Media Information/Odom Show



The 2007-08 edition of the University of South Carolina basketball media guide is a source of information for the news media. Additional information is available upon request. News releases, action and still photographs, video tapes and digital images are also available to accredited members of the news media.

## Media Credentials

Credentials are limited to working daily print and electronic media and to others whose duties make necessary access to press row. Photo credentials are issued only to working photographers and cinematographers. Photographers are restricted to the baselines and may use natural light only. Flash units are not allowed.

For the fourth straight year, USC will use the on-line credentials system. Please go to [www.sports-systems.com/usc](http://www.sports-systems.com/usc) to register for credentials (photo, press row).

Requests made less than one week prior to the game date will not be mailed, but will be left at the Press Pass Gate on the Gadsden Street side of the Colonial Center. A limited number of media parking spaces are available in the in the media lot located adjacent to the Colonial Center. Media parking passes must be requested well in advance.

Michelle Schmitt can be contacted at the following address and numbers:

Michelle Schmitt  
Media Relations Office  
1322 Heyward Street, Roost Bldg. B  
Columbia, S.C. 29208  
(803) 777-7872 - office  
(803) 463-0359 - cell phone  
(803) 777-2967 - fax

## Interview Policies

**In-Season Interview Policy:** All interview requests must be made in advance to the Media Relations Office. Beginning with the start of practice in October all players and coaches are available for interviews 45 minutes prior to the start of practice or team meeting, whichever is first. Anyone requesting interviews must call Michelle Schmitt in the Media Relations Office prior to 5 pm the day before interviews. All interviews must be finished 20 minutes prior to the start of the scheduled practice.

If a telephone interview is desired, the player will be given the phone number of the media representative and will call that individual prior to the start of practice. Occasionally, USC will set up conference calls for out of town media with specific players.

**Post-Game Interview Policy:** After each home game, Coach Odom will come to the press interview room (located adjacent to the media room) for interviews with the media. The visiting coach is asked to do likewise after Odom finishes. After a brief cooling off period, South Carolina players are available for interviews inside the Gamecock lockerroom in the team meeting area. Opponent lockerroom policies may vary amongst schools. Contact the opponent SID for information.

**Road Interview Policy:** Anyone desiring interviews with Coach Odom must make a request in advance, prior to the Gamecocks' departure from Columbia. Interviews with Coach Odom will take place prior to shootaround the day of the game at the opponents venue. No player interviews are allowed until after the game once the team leaves Columbia.

## Home Game Services

**Press Room:** The South Carolina basketball media room is located behind the visitor bench near the lockerroom cluster at The Colonial Center. This room is open only to accredited media with proper credentials.

**Telephones and Fax Machines:** The Media Relations Office furnishes eight telephones in the press room and on press row. There is wireless and high speed data lines in the press room as well. Those phones and data lines are available on a first come, first served basis. Fax service is also furnished without charge, though media are encouraged to access the athletic web site ([www.gamecocksonline.com](http://www.gamecocksonline.com)) for boxscores, play-by-plays and quotes after games.

**Food Services:** A buffet will be served in the press room prior to all games. Snacks and drinks will be served at halftime. Soft drinks and coffee may be taken to press row, but all food must be consumed in the press room area.

**Statistical Services:** Complete play-by-play, full halftime and final boxscores and post-game coaches' quotes are provided to the media. Computer monitors are on press row for broadcast and print media locations for immediate updates throughout the game.

## Broadcasts

Announce positions for radio and tv broadcasts are at courtside. Under contracted reciprocal agreements, the official designated originating station or network of the visiting team is allowed to originate radio broadcasts without charge. All others will be charged an origination fee.

Stations must contact Liz McMillan of Gamecock Sports Properties at (803) 777-7895 for information.

- SEASON
- TEAM
- STAFF
- RIVALRY**
- REVIEW
- RECORDS
- HISTORY

## Gamecock Basketball TV Show With Head Coach Dave Odom

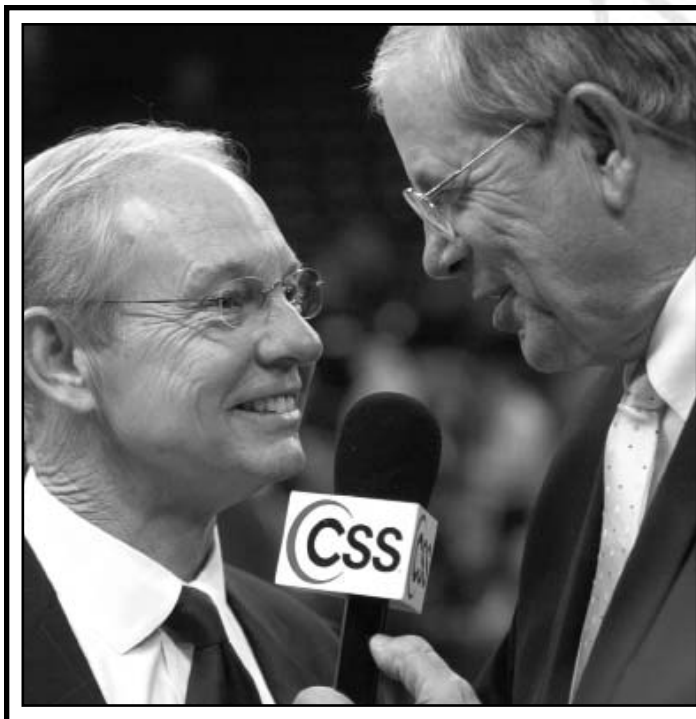
Dave Odom's South Carolina Basketball Television Show, featuring the Gamecocks' seventh-year head coach and Mike Morgan, will be broadcast over four television stations on a two-state network and on the Comcast (CSS) regional cablevision network across the Southeast.

The show, a product of ISP Sports and Learfield Communications, will be featured throughout the state of South Carolina and the entire Southeast. The show will contain highlight analysis, player profiles and special features. Those projected stations airing Gamecock Basketball with Dave Odom are listed in below (all stations to air the show on Sundays unless otherwise noted):

Station	Market	Day	Time
FCS (Fox Coll. Sports)	Nationwide	Sundays	TBD
(Fox College Sports)			
WIS	Columbia, SC	Sundays	11:30 AM
WCIV	Charleston, SC	Sundays	11:30 PM
WBSC	Greenville/Spartanburg, SC	Sundays	11:30 AM
Comcast/Channel 6	Augusta, GA	Sundays	3:30 PM

### Also on cable...

WIS-Florence	Florence/Myrtle Beach	Sundays	11:30 AM
CSS - Comcast	AL, AK, GA, FL, KY, MS, SC, TN	Wednesdays	5:00 PM
WHHI	Hilton Head Island	Wednesdays	9:00 PM



**100 YEARS FACT:** Former Gamecock great, Brian Winters, is the head coach of the WNBA's Indiana Fever.



# SEC Media Information

## SEC Men's Basketball SID Contacts

Name	Direct Line	Email Address
<b>SEC Office</b>		
DeWayne Peevy	205/458-3010	dpeevy@sec.org
<b>Alabama</b>		
Becky Hopf	205/348-6084	bhopf@ia.ua.edu
<b>Arkansas</b>		
Robby Edwards	479/575-2751	robbye@uark.edu
<b>Auburn</b>		
Chuck Gallina	334/844-9800	gallica@auburn.edu
<b>Florida</b>		
Fred Demarest	352/375-4683, ext. 6119	fredd@gators.uaa.ufl.edu
<b>Georgia</b>		
Tim Hix	706/542-1621	thix@sports.uga.edu
<b>Kentucky</b>		
Scott Stricklin	859/257-3838	stricklin@uky.edu
<b>LSU</b>		
Kent Lowe	225/388-8226	clowe@lsu.edu
<b>Mississippi</b>		
Kyle Campbell	662/915-7522	ekcampbe@olemiss.edu
<b>Mississippi State</b>		
David Rosinski	662/325-3595	rosinski@athletics.msstate.edu
<b>South Carolina</b>		
Michelle Schmitt	803/777-7872	mschmitt@gwm.sc.edu
<b>Tennessee</b>		
Craig Pinkerton	865/974-1212	craig@tennessee.edu
<b>Vanderbilt</b>		
Andy Boggs	615/343-1847	andy.boggs@vanderbilt.edu

## SEC Websites

The SEC has an extensive presence on the World Wide Web. SEC information can be accessed on the Web at [www.secsports.com](http://www.secsports.com).

The SEC also offers a media-only section of the website, which can be found at [www.secsportsmedia.com](http://www.secsportsmedia.com). Media covering the SEC can retrieve information from the conference office as well as the 12 SEC institutions. An internet photo gallery and championship credentialing system is also available on the site. All 12 SEC schools place much of their information released to the media online on their websites. The website addresses are below:

Alabama .....	<a href="http://www.rolltide.com">www.rolltide.com</a>
Arkansas.....	<a href="http://www.hogwired.com">www.hogwired.com</a>
Auburn.....	<a href="http://www.auburntigers.com">www.auburntigers.com</a>
Florida.....	<a href="http://www.gatorzone.com">www.gatorzone.com</a>
Georgia.....	<a href="http://www.georgiadogs.com">www.georgiadogs.com</a>
Kentucky.....	<a href="http://www.ukathletics.com">www.ukathletics.com</a>
LSU.....	<a href="http://www.lsusports.net">www.lsusports.net</a>
Mississippi .....	<a href="http://www.olemisssports.com">www.olemisssports.com</a>
Mississippi State.....	<a href="http://www.mstateathletics.com">www.mstateathletics.com</a>
South Carolina.....	<a href="http://www.gamecocksonline.com">www.gamecocksonline.com</a>
Tennessee .....	<a href="http://www.utsports.com">www.utsports.com</a>
Vanderbilt.....	<a href="http://www.vucommodores.com">www.vucommodores.com</a>

## Internet Photo Gallery

The SEC, operates an online photo gallery for media usage. To access the platform, go to [www.secsportsmedia.com](http://www.secsportsmedia.com). The online photo gallery will contain photos of coaches, student-athletes and staff as well as logos, stadiums and other landmarks.

## Weekly Awards

The SEC will name a Player of the Week and Freshman of the Week in men's basketball each Monday of the season. Each week's selections will be released for Monday afternoon publication and will also be announced in the league's weekly releases. Nominations for the award are made each week by the men's basketball sports information contacts.

## E-mail Service

Information on SEC men's basketball will be emailed periodically through the season to accredited media. To be added to the SEC email list, please email the SEC Media Relations Office at [dpeevy@sec.org](mailto:dpeevy@sec.org).

## Coaches Teleconference

The 12 SEC men's head basketball coaches are scheduled to participate every Monday and Thursday (Thurs., Jan. 3 to Mon., March 10, 2008). The NCAA Tournament teleconference is set for Mon., March 17 at 11 a.m. (EST). It will feature coaches from all SEC teams participating in the NCAA Tournament.

### Order of Appearance (All Times Eastern)

11:00 a.m.	Kevin Stallings, Vanderbilt
11:07 a.m.	Billy Donovan, Florida
<b>11:14 a.m.</b>	<b>Dave Odom, South Carolina</b>
11:21 a.m.	Dennis Felton, Georgia
11:28 a.m.	John Brady, LSU
11:35 a.m.	Billy Gillispie, Kentucky
11:42 a.m.	Bruce Pearl, Tennessee
11:49 a.m.	John Pelphrey, Arkansas
11:56 a.m.	Mark Gottfried, Alabama
12:03 p.m.	Jeff Lebo, Auburn
12:10 p.m.	Andy Kennedy, Ole Miss
12:17 p.m.	Rick Stansbury, Mississippi State



- SEASON
- TEAM
- STAFF
- RIVALS
- REVIEW
- RECORDS
- HISTORY



# Gamecock Radio Network

Gamecock Sports Properties, a partnership between the University of South Carolina Athletics Department and two of the country's leaders in the collegiate sports marketing industry, ISP Sports and Learfield Communications, Inc., is the originating medium for radio coverage of the 2007-08 South Carolina basketball games.

Gamecock Sports Properties is responsible for the overall management of the athletic program's corporate partnership effort, which includes producing and selling and distributing the Gamecock Radio Network (live play-by-play and call-in shows) and television programming (pay per view opportunities and coaches shows), print advertising in various athletic department publications, and selected signage in university athletic facilities.

Mike Morgan enters his fifth year as the play-by-play announcer for the Gamecock Radio Network. Morgan has been a part of the basketball broadcasts for the last eight years, and also called the women's basketball games for one year.

Morgan has served as the voice of Carolina Baseball the last eight years, and also worked the telecasts of Gamecock football on CSS and Pay Per View for the last six.

Morgan co-hosts "PrimeTime Sports" on News/Talk WIS (1320 AM), Monday-Fridays from 6 to 8 p.m., as well as "Carolina Calls" featuring Gamecock coaches. The Dave Odom and Ray Tanner television shows are also hosted by Morgan.

Before coming to Columbia, Morgan performed

**2007.08 Gamecock Basketball  
Radio Network**

**Projected Stations as of October 1, 2007**

City	Station	Freq.	City	Station	Freq.
Aiken/Edgefield	WKSX	92.7 FM	Greenville	WYRD	1330 AM
Allendale	WDOG	93.5 FM	Greenwood	WLMA	1350 AM
Anderson	WRIX	103.1 FM	Myrtle Beach	WRNN	99.5 FM
Camden	WPUB	102.7 FM	Newberry	WKDK	1240 AM
Charleston	WTMA	1250 AM	Rock Hill	WRHM	107.1 FM
Chesterfield	WVSZ	107.3 FM	Seneca	WSNW	1150 AM
Clinton	WPCC	1410 AM	Spartanburg	WORD	950 AM
Columbia	WISW	1320 AM	Sumter	WDXY	1240 AM
Columbia	WOMG	103.1 FM	Union	WBCU	1460 AM
Florence	WWFN	100.1 FM	Walterboro	WALI	93.7 FM

*Listen on the Internet at [www.gamecocksonline.com](http://www.gamecocksonline.com)*

various play-by-play stints for football, basketball, and baseball in Georgia, Alabama, and Florida. He also performed play-by-play for the single-A affiliate of the Cleveland Indians, the Columbus Redstixx, for two seasons.

Morgan earned the 2005 and 2006 South Carolina Sportscaster of the Year award by the National Sportscasters and Sportswriters Association (NSSA).

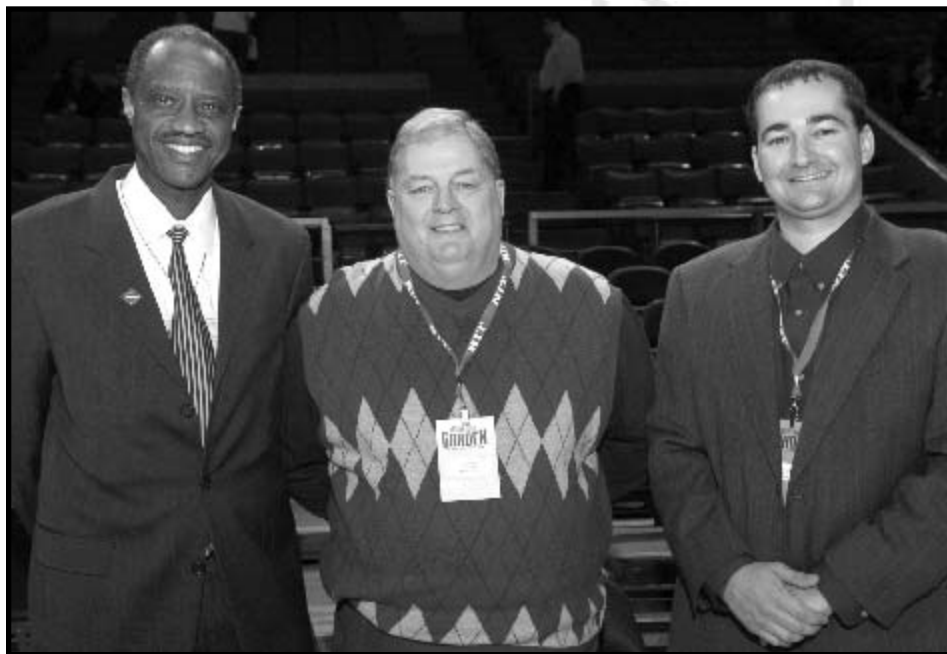
Casey Manning, the color analyst for the

Gamecock Radio Network, earned a varsity letter for the legendary coach Frank McGuire from 1971-1973 (freshmen were not eligible to play varsity basketball) and attended USC from 1969-1973. He won the Freshman Academic Award. He was selected to Who's Who in Colleges and Universities and chosen as a USC outstanding senior. He was a member of USC's ACC Tourney Champ team in 1970-1971. He was player of the year in South Carolina in 1969 and a high school All American.

Manning is currently a Circuit Court Judge for the state of South Carolina, having served in that capacity since April 1994. He served as the Assistant Attorney General for the state of South Carolina for five years (1983-88), and was the Chief of Prosecutions from 1988-89. Manning is a member of the American Bar Association and is a past president of the South Carolina Athletic Hall of Fame.

Carroll Senn has served as Engineer/Producer for the Gamecock Basketball Radio Network since 1981.

Liz McMillan has been General Manager for the Network since 1993 and is the first woman in the SEC to serve in this capacity.



The USC radio team, which called its second-straight NIT title game in 2006, includes (L-R) color analyst Casey Manning, engineer Carroll Senn and play-by-play announcer Mike Morgan.

- SEASON
- TEAM
- STAFF
- RIVALS**
- REVIEW
- RECORDS
- HISTORY

**OLDIES 103**  
Carolina's Greatest Oldies  
HOME OF GAMECOCK BASKETBALL



# The Southeastern Conference

A pioneer in the integration of higher education and athletic competition, the Southeastern Conference stands ready to advance intercollegiate athletics into the 21st century.

Since its formation in 1933, the SEC has achieved both stature and stability by designating governing/voting power to the presidents of the member institutions. They have determined the policies of the conference and through the years this involvement has been the principal source of strength in the evolution of the SEC.

Throughout its history, the SEC has provided leadership on the vital issues facing intercollegiate competition. In 1993, the member institutions adopted the Principles of Gender Equity, committed to increasing the quantity and quality of women's athletic opportunities. Each school will provide at least two more women's intercollegiate programs than the number of men's.

Faced with the task of conference realignment after competing with 10 members since 1966, the SEC welcomed the University of Arkansas on Aug. 1, 1990, and the University of South Carolina on Sept. 25, 1990. Joining charter members Alabama, Auburn, Florida, Georgia, Kentucky, LSU, Mississippi, Mississippi State, Tennessee and Vanderbilt, on July 1, 1991, Arkansas and South Carolina became the first schools added in conference history.

Fully incorporated into conference competition by 1992, Arkansas and South Carolina participated in SEC championships for all sports except football during the 1991-92 academic year. The SEC was again at the forefront, introducing football, basketball and baseball divisional play and the nation's first ever Division I football championship game.

SEC schools began athletic competition with one another 101 years ago as members of the Southern Intercollegiate Athletic Association. Seven institutions (Alabama, Auburn, Georgia, Georgia Tech, North Carolina, Sewanee and Vanderbilt) attended the SIAA organizational meeting of faculty representatives, called by Dr. William L. Dudley of Vanderbilt, in Atlanta Dec. 22, 1894.

Student teams from the schools began meeting in various sports with little pattern to their contests. Baseball was the most popular campus sport, but the American adaptation of the English game rugby, called "football" was drifting down from the East and Midwest. Southerners were quickly attracted to this sport formalized in 1869.

The first football game in the Southeast was played April 9, 1880, on the ground now called Old Stoll Field at the University of Kentucky. Kentucky, then known as Kentucky A&M, was host to the contest in which Transylvania College, then called Kentucky University, upset Centre College 13 3/4 to 0. Kentucky A&M (now UK) organized a team and in November 1881, played Transylvania a three-game series (winning 7 1/2 to 1, then losing 1 to 2 and 2 1/2 to 3 3/4). By 1895, 11 current SEC members were playing football.

Basketball moved quickly to the South as Vanderbilt was playing at the Nashville YMCA in 1893, just two years after Dr. James Naismith originated the game at

Springfield (Mass.) College.

Track was organized on a conference level at the 1895 SIAA meeting presided over by President Dudley who served until his death in 1914. The first annual championship meet was held at Vanderbilt May 15, 1896. By 1900 eight of the 13 charter SEC members were participating.

The seven-member SIAA expanded to 19 institutions in 1895 (Alabama, Auburn, Central, Clemson, Cumberland, Georgia, Georgia Tech, Kentucky, LSU, Mercer, Mississippi State, Nashville, North Carolina, Sewanee, Southwestern Presbyterian, Tennessee, Texas, Tulane and Vanderbilt) and by 1920 there were 30 members.

The larger schools reorganized as the Southern Conference at a meeting in Gainesville Dec. 12-13, 1920. Professor S.V. Sanford of Georgia called the meeting and served as the first president. Charter members of the Southern Conference included: Alabama, Auburn, Clemson, Georgia, Georgia Tech, Kentucky, Maryland, Mississippi State, North Carolina, North Carolina State, Tennessee, Virginia, Virginia Tech and Washington & Lee.

Despite an original limit of 16, the membership grew to 23 by 1928. In 1922, Florida, Louisiana State, Mississippi, South Carolina, Tulane, Vanderbilt and Virginia Military joined, while Sewanee and Duke became members in 1923 and 1928, respectively. At one time or another the SIAA and the SC included most of the Southern colleges from Virginia to Texas.

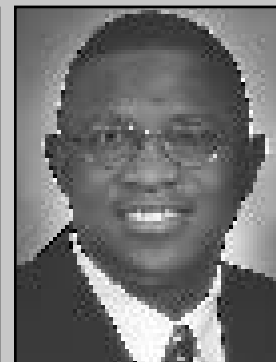
The 13 members west and south of the Appalachian Mountains reorganized as the Southeastern Conference at the annual SC meeting of Dec. 8-9, 1932, in Knoxville. The 10 coast members remained in the Southern Conference. Dr. Frank L. McVey of Kentucky was elected president of the new conference whose charter members were: Alabama, Auburn, Florida, Georgia, Georgia Tech, Kentucky, Louisiana State, Mississippi, Mississippi State, Sewanee, Tennessee, Tulane and Vanderbilt. (Sewanee withdrew Dec. 13, 1940, Georgia Tech on June 1, 1964 and Tulane on June 1, 1966). McVey held an informal meeting of the school presidents in Birmingham Feb. 16, 1933, then the first full meeting in Atlanta Feb. 27.

The Office of the Commissioner was formed in 1940 in Jackson due to the great amount of detail work developing, especially in recruiting and eligibility. Former Mississippi Governor Martin S. Conner took office as commissioner Aug. 21, 1940, as an extension of the authority of the presidents. Conner later became ill and the secretary of the conference, Dean N.W. Dougherty of Tennessee, served as acting commissioner during the fall of 1946.

The Office moved to Birmingham with the appointing of Bernie H. Moore as the second full-time commissioner on Feb. 21, 1948. Moore, a former LSU coach, guided the SEC to national respect in his 18-year tenure.



**Mike Slive**  
**Commissioner**



**Dwayne Peevy**  
**Associate Director**  
**Men's Basketball Contact**

A.M. (Tonto) Coleman succeeded Moore upon his retirement April 1, 1966. The Alabama native who was reared in Texas and experienced in athletic coaching and administration served six and a half years.

Dr. H. Boyd McWhorter, then Dean of Arts and Sciences at Georgia and secretary of the league since 1967, accepted the position upon the retirement of Coleman Aug. 1, 1972. Under his leadership the SEC experienced unparalleled growth. In McWhorter's first year the SEC distributed \$1.57 million and 14 years later (1986) the league distributed \$15 million in revenue to the member institutions.

Dr. Harvey W. Schiller, an Air Force colonel and faculty chair at the U.S. Air Force Academy, followed McWhorter upon retirement, taking office Sept. 15, 1986. Under his guidance the SEC established itself as a leader in the areas of athletic scholarship and marketing.

Roy F. Kramer succeeded Schiller on Jan. 10, 1990. Kramer joined the league Office after spending 12 years as athletic director at Vanderbilt.

Michael L. Slive, first-ever Commissioner of Conference USA and former commissioner of the Great Midwest Conference, was named the seventh commissioner of the SEC on July 2, 2002.

The first SEC champions were crowned in 1933 in baseball, basketball, football and outdoor track. The league's inaugural championship event was a basketball tournament in Atlanta Feb. 24-28, 1933. Records show the first men's team title for cross-country was awarded in 1935, while golf and swimming were added in 1937. The league later began hosting championships in tennis (1953) and indoor track (1957).

In the 1979-80 academic year SEC Championships for women were recognized in basketball, tennis and volleyball. The following year golf, gymnastics, swimming and track and field were added. The administration of women's athletics officially came under the auspices of the conference office on Sept. 1, 1984.

The SEC currently regulates nine men's sports and 10 women's sports: Men — baseball, basketball, football, golf, swimming, tennis and track (cross country, indoor and outdoor). Women — basketball, golf, gymnastics, soccer, swimming, tennis, track (cross country, indoor and outdoor) and volleyball.

- SEASON
- TEAM
- STAFF
- RIVALS**
- REVIEW
- RECORDS
- HISTORY

**100 YEARS FACT: Former Gamecock Brian Winters is one of only seven players to have his jersey retired by the Milwaukee Bucks.**



# Annual SEC Champions



Year	Champion	SEC	Overall	Tourney Champ	Site	Championship Game Result
1933	Kentucky	8-0	20-3	Kentucky	Atlanta	Kentucky 46, Mississippi State 27
1934	Alabama	13-2	16-2	Alabama	Atlanta	Alabama 41, Florida 25
1935	Louisiana State	12-0	14-1	No Tournament		
	Kentucky	11-0	19-2			
1936	Tennessee	8-4	15-6	Tennessee	Knoxville	Tennessee 29, Alabama 25
1937	Kentucky	5-3	17-5	Kentucky	*Knoxville	Kentucky 39, Tennessee 25
1938	Georgia Tech	9-2	18-2	Georgia Tech	Baton Rouge	Georgia Tech 58, Ole Miss 47
1939	Kentucky	5-2	16-4	Kentucky	Knoxville	Kentucky 46, Tennessee 38
1940	Kentucky	4-4	15-6	Kentucky	Knoxville	Kentucky 51, Georgia 43
1941	Tennessee	8-3	17-5	Tennessee	Louisville	Tennessee 36, Kentucky 33
1942	Kentucky	6-2	19-6	Kentucky	Louisville	Kentucky 36, Alabama 34
1943	Tennessee	6-3	14-4	Tennessee	Louisville	Tennessee 33, Kentucky 30
1944	Kentucky	0-0	19-2	Kentucky	**Louisville	Kentucky 62, Tulane 46
1945	Kentucky	4-1	22-4	Kentucky	Louisville	Kentucky 39, Tennessee 35
1946	Kentucky	6-0	28-2	Kentucky	Louisville	Kentucky 59, Louisiana State 36
1947	Kentucky	11-0	34-3	Kentucky	Louisville	Kentucky 55, Tulane 38
1948	Kentucky	9-0	36-3	Kentucky	Louisville	Kentucky 54, Georgia Tech 43
1949	Kentucky	13-0	32-2	Kentucky	Louisville	Kentucky 68, Tulane 52
1950	Kentucky	11-2	25-5	Kentucky	Louisville	Kentucky 95, Tennessee 58
1951	Kentucky	14-0	32-2	Vanderbilt	Louisville	Vanderbilt 61, Kentucky 57
1952	Kentucky	14-0	29-3	Kentucky	Louisville	Kentucky 44, Louisiana State 43
1953	Louisiana State	13-0	25-2	No Tournament		
1954	Kentucky	14-0	25-0	No Tournament		
	Louisiana State	14-0	21-5			
1955	Kentucky	12-2	23-3	No Tournament		
1956	Alabama	14-0	21-3	No Tournament		
1957	Kentucky	12-2	23-5	No Tournament		
1958	Kentucky	12-2	23-6	No Tournament		
1959	Mississippi State	13-1	24-1	No Tournament		
1960	Auburn	12-2	19-3	No Tournament		
1961	Mississippi State	11-3	19-6	No Tournament		
1962	Mississippi State	13-1	24-1	No Tournament		
	Kentucky	13-1	23-3			
1963	Mississippi State	13-1	23-3	No Tournament		
1964	Kentucky	11-3	21-6	No Tournament		
1965	Vanderbilt	15-1	24-4	No Tournament		
1966	Kentucky	15-1	32-2	No Tournament		
1967	Tennessee	15-3	21-7	No Tournament		
1968	Kentucky	15-3	22-5	No Tournament		
1969	Kentucky	16-2	23-5	No Tournament		
1969	Kentucky	16-2	23-5	No Tournament		
1970	Kentucky	17-1	26-2	No Tournament		
1971	Kentucky	16-2	22-4	No Tournament		
1972	Kentucky	14-4	21-7	No Tournament		
	Tennessee	14-4	19-6			
1973	Kentucky	14-4	20-8	No Tournament		
1974	Vanderbilt	15-3	23-3	No Tournament		
	Alabama	15-3	22-4			
1975	Kentucky	15-3	26-5	No Tournament		
	Alabama	15-3	22-5			
1976	Alabama	15-3	23-5	No Tournament		
1977	Kentucky	16-2	26-4	No Tournament		
	Tennessee	16-2	22-6			
1978	Kentucky	16-2	30-2	No Tournament		
1979	Louisiana State	14-4	23-6	Tennessee	Birmingham	Tennessee 75, Kentucky 69 (OT)
1980	Kentucky	15-3	29-6	Louisiana State	Birmingham	Louisiana State 80, Kentucky 78
1981	Louisiana State	17-1	31-5	Ole Miss	Birmingham	Ole Miss 66, Georgia 62
1982	Kentucky	13-5	22-8	Alabama	Lexington	Alabama 48, Kentucky 46
	Tennessee	13-5	20-10			
1983	Kentucky	13-5	23-8	Georgia	Birmingham	Georgia 86, Alabama 71
1984	Kentucky	14-4	29-5	Kentucky	Nashville	Kentucky 51, Auburn 49
1985	Louisiana State	13-5	19-10	Auburn	Birmingham	Auburn 53, Alabama 49 (OT)
1986	Kentucky	17-1	32-4	Kentucky	Lexington	Kentucky 83, Alabama 72
1987	Alabama	16-2	28-5	Alabama	Atlanta	Alabama 69, Louisiana State 62
1988	Vacated			Vacated	Baton Rouge	Kentucky 62, Georgia 57
1989	Florida	13-5	21-13	Alabama	Knoxville	Alabama 72, Florida 60
1990	Georgia	13-5	20-9	Alabama	Orlando	Alabama 70, Ole Miss 51
1991	Mississippi State	13-5	20-9	Alabama	Nashville	Alabama 88, Tennessee 69
	Louisiana State	13-5	20-10			
1992	Arkansas	13-3	26-8	Kentucky	Birmingham	Kentucky 80, Alabama 54
1993	Vanderbilt	14-2	28-6	Kentucky	Lexington	Kentucky 82, Louisiana State 65
1994	Arkansas	14-2	31-3	Kentucky	Memphis	Kentucky 73, Florida 60
1995	Kentucky	14-2	28-5	Kentucky	Atlanta	Kentucky 95, Arkansas 93 (OT)
1996	Kentucky	16-0	34-2	Mississippi State	New Orleans	Mississippi State 84, Kentucky 73
1997	South Carolina	15-1	24-8	Kentucky	Memphis	Kentucky 95, Georgia 68
1998	Kentucky	14-2	35-4	Kentucky	Atlanta	Kentucky 86, South Carolina 56
1999	Auburn	14-2	29-4	Kentucky	Atlanta	Kentucky 76, Arkansas 63
2000	Florida	12-4	29-8	Arkansas	Atlanta	Arkansas 75, Auburn 67
	Kentucky	12-4	23-10			
	Tennessee	12-4	26-7			
2001	Florida	12-4	24-7	Kentucky	Nashville	Kentucky 77, Ole Miss 55
	Kentucky	12-4	24-10			
2002	Alabama	12-4	27-8	Mississippi State	Atlanta	Mississippi State 61, Alabama 58
2003	Kentucky	16-0	32-4	Kentucky	New Orleans	Kentucky 64, Mississippi 57
2004	Mississippi State	14-2	26-4	Kentucky	Atlanta	Kentucky 89, Florida 73
2005	Kentucky	14-2	28-6	Florida	Atlanta	Florida 70, Kentucky 53
2006	LSU	14-2	27-9	Florida	Nashville	Florida 49, South Carolina 47
2007	Florida	13-3	35-5	Florida	Nashville	Florida 77, Arkansas 56

- SEASON
- TEAM
- STAFF
- RIVALS**
- REVIEW
- RECORDS
- HISTORY

NOTES: From 1933-1950 the SEC champion was determined by a tournament, except for 1935. Since 1951, when the round-robin schedule was introduced, the title has been decided by a winning percentage on the conference schedule. \* Only eight teams invited to participate. \*\* Only six teams participated due to World War II.



# Old Spice Classic/Possible Match-ups



Ed Dechellis



## Penn State

Thurs., Nov. 22 \* Noon (ESPN2)

Milk House at Disney Wide World of Sports \* Orlando, Fla.

### GENERAL INFORMATION

**Location:** State College, Pa.  
**Founded:** 1855  
**Enrollment:** 40,709  
**President:** Dr. Graham Spanier  
**Faculty Rep:** Scott Kretchmar  
**Athletics Director:** Tim Curley  
**Nickname:** Nittany Lions  
**Colors:** Blue and White  
**Facility (Capacity):** Bryce Jordan Center (15,261)  
**Conference:** Big Ten

### SPORTS INFORMATION

**Basketball SID:** Brian Siegrist  
**Office Phone:** 814-865-1757  
**Email:** tbs1@psu.edu  
**Mailing Address:**  
101D Bryce Jordan Center  
State College, PA 16802

### BASKETBALL INFORMATION

**Head Coach:** Ed Dechellis (Penn State, 1982)  
**Record at Penn State:** 42-76 (4 years)  
**Overall Record:** 147-169 (12 years)  
**Record vs. South Carolina:** 0-2  
**Assistant Coaches:**  
Kurt Kanaskie (LaSalle, 1980)  
Hilliary Scott (Roanoke College, 1994)  
Dan Earl (Penn State, 1997)

**2006-07 Record:** 11-19  
**2006-07 Post Season:** None  
**Lettermen Returning/Lost:** 8/4  
**Starters Returning/Lost:** 4/2

**Series Record:** Series is tied at 1-1



Kirk Speraw



## Central Florida

### GENERAL INFORMATION

**Location:** Orlando, Fla.  
**Founded:** 1963  
**Enrollment:** 47,000  
**President:** Dr. John C. Hitt  
**Faculty Rep:** Cynthia Young  
**Athletics Director:** Keith R. Tribble  
**Nickname:** Knights  
**Colors:** Black and Gold  
**Facility (Capacity):** UCF Convocation Center (10,000)  
**Conference:** Conference USA

### SPORTS INFORMATION

**Basketball SID:** Doug Richards  
**Office Phone:** 407-823-2142  
**Email:** drichards@athletics.ucf.edu  
**Mailing Address:**  
PO Box 163555  
Orlando, FL 32816

### BASKETBALL INFORMATION

**Head Coach:** Kirk Speraw (Iowa, 1980)  
**Record at Central Florida:** 231-187 (14 years)  
**Record vs. South Carolina:** First Meeting  
**Overall Record:** 313-208 (17 years)  
**Assistant Coaches:**  
Mike Jakulski (St. Norbert's College, 1976)  
Craig Brown (Florida, 1995)  
Dwight Evans (B'ham-Sth. College, 1984)

**2006-07 Record:** 22-9  
**2006-07 Post Season:** None  
**Lettermen Returning/Lost:** 9/4  
**Starters Returning/Lost:** 3/2

**Series Record:** USC leads 2-0



Jim Larrinaga



## George Mason

### GENERAL INFORMATION

**Location:** Fairfax, Va.  
**Founded:** 1957  
**Enrollment:** 29,728  
**President:** Dr. Alan G. Mertan  
**Faculty Rep:** Linda Miller  
**Athletics Director:** Thomas J. O'Connor

**Nickname:** Patriots  
**Colors:** Green and Gold  
**Facility (Capacity):** Patriot Center (10,000)  
**Conference:** Colonial Athletic

### SPORTS INFORMATION

**Basketball SID:** Richard Coco  
**Office Phone:** 703-993-3264  
**Email:** rcoco@gmu.edu  
**Mailing Address:**  
MSN 3A5  
4400 University Drive  
Fairfax, VA 22030

### BASKETBALL INFORMATION

**Head Coach:** Jim Larrinaga (Providence, 1971)  
**Record at George Mason:** 184-119 (10 years)  
**Overall Record:** 382-288 (23 years)  
**Record vs. South Carolina:** First Meeting  
**Assistant Coaches:**  
Chris Caputi (Westfield State College, 2002)  
Scott Cherry (UNC, 1993)  
Michael Huger (Bowling Green State, 1994)

**2006-07 Record:** 18-15  
**2006-07 Post Season:** None  
**Lettermen Returning/Lost:** 9/4  
**Starters Returning/Lost:** 5/0

**Series Record:** George Mason leads 1-0



Frank Martin



## Kansas State

### GENERAL INFORMATION

**Location:** Manhattan, Kan.  
**Founded:** 1863  
**Enrollment:** 23,151  
**President:** Dr. Jon Wefold  
**Faculty Rep:** Dr. Michael Holen  
**Athletics Director:** Tim Weiser  
**Nickname:** Wildcats  
**Colors:** Purple and White  
**Facility (Capacity):** Bramlage Coliseum (13,344)  
**Conference:** Big Twelve

### SPORTS INFORMATION

**Basketball SID:** Tom Gilbert  
**Office Phone:** 785-532-7979  
**Email:** tgilbert@ksu.edu  
**Mailing Address:**  
Suite 31, Bramlage Coliseum  
1800 College Ave.  
Manhattan, KS 66502

### BASKETBALL INFORMATION

**Head Coach:** Frank Martin (Florida International, 1993)  
**Record at Kansas State:** First Season  
**Overall Record:** First Season  
**Record vs. South Carolina:** First Meeting  
**Assistant Coaches:**  
Dalonte Hill (Charlotte, 2001)  
Brad Underwood (Kansas State, 1986)  
Matt Figger (Eastern Kentucky, 1995)

# Old Spice Classic/Possible Match-ups

**2006-07 Record:** 23-12  
**2006-07 Post Season:** NIT Second Round  
**Lettermen Returning/Lost:** 8/7  
**Starters Returning/Lost:** 2/3

**Series Record:** Kansas State leads 1-0



Sidney Lowe



## North Carolina State

### GENERAL INFORMATION

**Location:** Raleigh, N.C.  
**Founded:** 1887  
**Enrollment:** 29,957  
**President:** Chancellor James Oblinger  
**Faculty Rep:** Don Ward  
**Athletics Director:** Lee Fowler  
**Nickname:** Wolfpack  
**Colors:** Red and White  
**Facility (Capacity):** RBC Center (19,722)  
**Conference:** Atlantic Coast

### SPORTS INFORMATION

**Basketball SID:** Brian Reinhardt  
**Office Phone:** 919-515-2102  
**Email:** brian\_Reinhardt@ncsu.edu  
**Mailing Address:**  
 P.O. Box 8502  
 Raleigh, NC 27695

### BASKETBALL INFORMATION

**Head Coach:** Sidney Lowe (St. Paul's, 2006)  
**Record at NC State:** 20-16 (1 year)  
**Overall Record:** 20-16 (1 year)  
**Record vs. South Carolina:** First meeting  
**Assistant Coaches:**  
 Monte Towe (NC State, 1974)  
 Pete Strickland (Pittsburgh, 1979)  
 Larry Harris (Pittsburgh, 1978)

**2006-07 Record:** 20-16  
**2006-07 Post Season:** NIT Quarterfinals  
**Lettermen Returning/Lost:** 7/5  
**Starters Returning/Lost:** 4/1

**Series Record:** N.C. State leads 48-28



Tommy Dempsey



## Rider

### GENERAL INFORMATION

**Location:** Lawrenceville, N.J.  
**Founded:** 1865  
**Enrollment:** 5,822  
**President:** Dr. Mordechai Rozanski  
**Faculty Rep:** Dr. Jonathan Husch  
**Athletics Director:** Don Harnum  
**Nickname:** Broncs  
**Colors:** Cranberry and White  
**Facility (Capacity):** Alumni Gymnasium (1,650)  
**Conference:** Metro Atlantic

### SPORTS INFORMATION

**Basketball SID:** Bud Focht  
**Office Phone:** 609-896-5138  
**Email:** focht@rider.edu  
**Mailing Address:**  
 2083 Lawrenceville Road  
 Lawrenceville, NJ 08648

### BASKETBALL INFORMATION

**Head Coach:** Tommy Dempsey (Susquehanna, 1997)  
**Record at Rider:** 24-35 (2 years)  
**Overall Record:** 24-35 (2 years)  
**Record vs. South Carolina:** First meeting  
**Assistant Coaches:**  
 Kevin Baggett (St. Joseph's, 1989)  
 Dane Fishcer (Ithaca College, 2002)  
 Mike Witcoskie (Susquehanna, 2001)

**2006-07 Record:** 16-15  
**2006-07 Post Season:** None  
**Lettermen Returning/Lost:** 9/1  
**Starters Returning/Lost:** 4/1

**Series Record:** Rider leads 1-0



Jay Wright



## Villanova

### GENERAL INFORMATION

**Location:** Villanova, Pa.  
**Founded:** 1842  
**Enrollment:** 6,290  
**President:** Rev. Peter M. Donohue, OSA  
**Faculty Rep:** Dan Regan  
**Athletics Director:** Vince Nicastro  
**Nickname:** Wildcats  
**Colors:** Blue and White  
**Facility (Capacity):** The Pavilion (6,500)  
**Conference:** Big East

### SPORTS INFORMATION

**Basketball SID:** Michael Sheridan  
**Office Phone:** 610-519-4145  
**Email:** michael.sheridan@villanova.edu  
**Mailing Address:**  
 Jake Nevin Field House  
 800 Lancaster Ave.  
 Villanova, PA 19085

### BASKETBALL INFORMATION

**Head Coach:** Jay Wright (Bucknell, 1983)  
**Record at Villanova:** 126-70 (6 years)  
**Overall Record:** 248-155 (13 years)  
**Record vs. South Carolina:** First Meeting  
**Associate Head Coach:**  
 Brett Gunning (UNLV, 1994)  
**Assistant Coaches:**  
 Ed Pinckney (Villanova, 1985)  
 Patrick Chambers (Philadelphia, 1994)

**2006-07 Record:** 22-11  
**2006-07 Post Season:** NCAA First Round  
**Lettermen Returning/Lost:** 7/5  
**Starters Returning/Lost:** 2/3

**Series Record:** South Carolina leads 7-2

- SEASON
- TEAM
- STAFF
- RIVALS**
- REVIEW
- RECORDS
- HISTORY

**2nd Annual Old Spice Classic \* Nov. 22 - 25, 2007**  
**Milk House at Disney Wide World of Sports • Orlando, Fla.**

<b>Thurs., Nov. 22</b>	12 p.m. Game 1 - South Carolina vs. Penn State 2 p.m. Game 2 - NC State vs. Rider 7 p.m. Game 3 - Villanova vs. Central Florida 9 p.m. Game 4 - George Mason vs. Kansas State	ESPN2 ESPN2 ESPN2 ESPN2
<b>Friday, Nov. 23</b>	10:30 a.m. Game 5 12:30 p.m. Game 6 5 p.m. Game 7 7:30 p.m. Game 8	Game 1 Loser vs. Game 2 Loser Game 1 Winner vs. Game 2 Winner Game 3 Loser vs. Game 4 Loser Game 3 Winner vs. Game 4 Winner
<b>Sunday, Nov. 25</b>	11 a.m. Game 9 1 p.m. Game 10 4:30 p.m. Game 11 6:30 p.m. Game 12	Game 5 Loser vs. Game 7 Loser (7th/8th Place) Game 5 Winner vs. Game 7 Winner (4th/6th Place) Game 6 Loser vs. Game 8 Loser (3rd/5th Place) Game 6 Winner vs. Game 8 Winner (Champion/2nd Place)





# 2007.08 Non-Conference Opponents



Scott Drew



## Baylor

Wed., Dec. 19 \* 7:30 pm (CSS)  
The Colonial Center

### GENERAL INFORMATION

**Location:** Waco, Texas  
**Founded:** 1845  
**Enrollment:** 14,040  
**President:** Dr. John M. Lilley  
**Faculty Rep.:** Michael Rogers  
**Athletic Director:** Ian McCaw  
**Nickname:** Bears  
**Colors:** Green and Gold  
**Arena (Capacity):** Ferrell Center (10,284)  
**Conference:** Big 12

### SPORTS INFORMATION

**Basketball SID:** Heath Nielsen  
**Office Phone:** (254) 710-2743  
**E-mail:** heath\_nielsen@baylor.edu  
**Mailing Address:**  
150 Bear Run  
Waco, TX 76711

### BASKETBALL INFORMATION

**Head Coach (Alma Mater, Year):**  
Scott Drew (Butler 1993)  
**Record at Baylor (Years):** 36-69 (4 years)  
**Career Record (Years):** 56-80 (5 years)  
**Record vs. South Carolina:** 0-1  
**Assistant Coaches:**  
Matthew Driscoll (Slippery Rock, 1992)  
Mark Morefield (Valparaiso, 1998)  
Jerome Tang

**2006-07 Record:** 15-16  
**2006-07 Post Season:** None  
**Lettermen Returning/Lost:** 9/3  
**Starters Returning/Lost:** 5/0

**Series Record:** USC is 1-0



Pat Douglass



## UC-Irvine

Fri., Dec. 28 \* 7:30 pm  
The Colonial Center

### GENERAL INFORMATION

**Location:** Irvine, Calif.  
**Founded:** 1962  
**Enrollment:** 25,000  
**Chancellor:** Dr. Michael Drake  
**Faculty Rep.:** David Snow  
**Interim Athletic Director:** Paula Smith  
**Nickname:** Anteaters  
**Colors:** Blue & Gold  
**Facility (Capacity):** Bren Events Center (5,000)  
**Conference:** Big West

### SPORTS INFORMATION

**Basketball SID:** Bob Olson  
**Office Phone:** (949) 824-5814  
**E-mail:** rkolson@uci.edu  
**Mailing Address:**  
UCI Athletic Communications  
903 West Peltason  
Irvine, CA 92697-4500

### BASKETBALL INFORMATION

**Head Coach (Alma Mater, Year):**  
Pat Douglass (Pacific, 1972)  
**Record at UCI (Years):** 153-138 (10 years)  
**Overall Record (Years):** 529-256 (26 years)  
**Record vs. South Carolina:** 1-0  
**Assistant Coaches (Alma Mater, Year):**  
Tod Murphy (UC Irvine, 1986)  
Ross Land (Northern Arizona, 2001)  
Rhett Soliday (Concordia, 2002)

**2006-07 Record:** 15-18  
**2006-07 Post Season:** None  
**Lettermen Returning/Lost:** 8/4  
**Starters Returning/Lost:** 4/1

**Series Record:** UC Irvine is 1-0



Robbie Laing



## Campbell

Wed., Nov. 28 \* 7:30 pm  
The Colonial Center

### GENERAL INFORMATION

**Location:** Buies Creek, N.C.  
**Founded:** 1887  
**Enrollment:** 10,471  
**President:** Dr. Jerry M. Wallace  
**Faculty Rep.:** Dr. Gary Taylor  
**Athletic Director:** Stan Williamson  
**Nickname:** Fighting Camels  
**Colors:** Orange and Black  
**Arena (Capacity):** Carter Gymnasium (947)  
**Conference:** Atlantic Sun

### SPORTS INFORMATION

**Basketball SID:** Stan Cole  
**Office Phone:** (910) 893-1331  
**E-mail:** cole@campbell.edu  
**Mailing Address:**  
P.O. Box 10  
Buies Creek, NC 27506

### BASKETBALL INFORMATION

**Head Coach:**  
Robbie Laing (Troy State, 1982)  
**Record at Campbell (Years):** 29-84 (4 years)  
**Career Record (Years):** 29-84 (4 years)  
**Record vs. South Carolina:** 0-1  
**Assistant Coaches (Alma Mater, Year):**  
Buck Harris (Augusta State, 1994)  
Bobby Kennen (Palm Beach Atlantic, 1993)  
Darryl LaBarrie (Georgia Tech, 2001)

**2006-07 Record:** 14-17  
**2006-07 Post Season:** None  
**Lettermen Returning/Lost:** 6/6  
**Starters Returning/Lost:** 2/3

**Series Record:** USC leads, 5-1

- SEASON
- TEAM
- STAFF
- RIVALS**
- REVIEW
- RECORDS
- HISTORY

# 2007.08 Non-Conference Opponents



**Ed Conroy**



**Oliver Purnell**



**Bobby Cremins**



## The Citadel

**Mon., Nov. 12 \* 7:30 pm**  
**The Colonial Center**

### GENERAL INFORMATION

**Location:** Charleston, S.C.  
**Founded:** 1842  
**Enrollment:** 1,800  
**President:** Lt. Gen. John W. Rosa, Jr.  
**Faculty Rep.:** Col. William Sharbrough, III  
**Athletic Director:** Les Robinson  
**Nickname:** Bulldogs  
**Colors:** Citadel Blue and White  
**Facility (Capacity):** McAlister Field House (6,000)  
**Conference:** Southern

### SPORTS INFORMATION

**Basketball SID:** Noelle Orr  
**Office Phone:** (843) 953 5353  
**E-mail:** noelle.orr@citadel.edu  
**Mailing Address:**  
 McAlister Field House  
 The Citadel  
 Charleston, SC 29409

### BASKETBALL INFORMATION

**Head Coach (Alma Mater, Year):**  
 Ed Conroy (The Citadel, 1989)  
**Record at The Citadel (Years):** 7-23 (1 year)  
**Overall Record (Years):** 7-23 (1 year)  
**Record vs. South Carolina:** 0-1  
**Assistant Coaches (Alma Mater, Year):**  
 Andy Fox (Cornell College (IA), 2004)  
 Doug Novak (Tennessee, 1990)  
**2006-07 Record:** 7-23  
**2006-07 Post Season:** None  
**Lettermen Returning/Lost:** 4/6  
**Starters Returning/Lost:** 2/3  
**Series Record:** USC leads 74-23

## at Clemson

**Sat., Dec. 1 \* 4 pm (FSN)**  
**Littlejohn Coliseum**

### GENERAL INFORMATION

**Location:** Clemson, S.C.  
**Founded:** 1889  
**Enrollment:** 17,309  
**President:** James F. Barker  
**Faculty Rep.:** Dr. Larry Laforge  
**Athletic Director:** Terry Don Phillips  
**Nickname:** Tigers  
**Colors:** Burnt Orange and Northwest Purple  
**Facility (Capacity):** Littlejohn Coliseum (10,000)  
**Conference:** Atlantic Coast (Atlantic)

### SPORTS INFORMATION

**Basketball SID:** Philip Sikes  
**Office Phone:** 864-656-1985  
**E-mail:** philips@clemson.edu  
**Mailing Address:**  
 PO Box 31  
 Clemson, SC 29633

### BASKETBALL INFORMATION

**Head Coach (Alma Mater, Year):**  
 Oliver Purnell (Old Dominion, 1975)  
**Record at CU (Years):** 70-58 (4 years)  
**Overall Record (Years):** 326-249 (19 years)  
**Record vs. South Carolina:** 3-1  
**Assistant Coaches (Alma Mater, Year):**  
 Ron Bradley (Eastern Nazarene, 1974)  
 Shaka Smart (Kenyon, 1999)  
 Frank Smith (Old Dominion, 1988)  
**2006-07 Record:** 25-11  
**2006-07 Post Season:** NIT Final  
**Lettermen Returning/Lost:** 11/3  
**Starters Returning/Lost:** 4/1  
**Series Record:** USC leads, 86-71

## College of Charleston

**Sat., Dec. 22 • 3 pm (FSN)**  
**The Colonial Center**

### GENERAL INFORMATION

**Location:** Charleston, S.C.  
**Founded:** 1770  
**Enrollment:** 11,617  
**President:** Dr. P. George Benson  
**Faculty Rep.:** Dr. William Moore  
**Interim Athletic Director:** Fred Daniels  
**Nickname:** Cougars  
**Colors:** Maroon, Gold and White  
**Facility (Capacity):** John Kresse Arena (3,500)  
**Conference:** Southern

### SPORTS INFORMATION

**Basketball SID:** Tony Ciuffo  
**Office Phone:** 843-953-5465  
**E-mail:** ciuffo@cofc.edu  
**Mailing Address:**  
 College of Charleston  
 30 George Street  
 Charleston, SC 29424

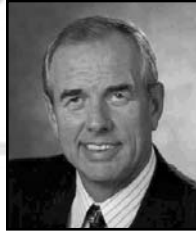
### BASKETBALL INFORMATION

**Head Coach (Alma Mater, Year):**  
 Bobby Cremins (South Carolina, 1970)  
**Record at CoFC (Year):** 22-11 (1 year)  
**Overall Record (Years):** 476 - 318 (26 years)  
**Record vs. South Carolina:** 1-2  
**Assistant Coaches (Alma Mater, Year):**  
 Mark Byington, (UNC Wilmington, 1998)  
 Fred Dupree, (Canisius, 1998)  
 Andrew Wilson (Florida State, 2006)  
**2006-07 Record:** 22-11  
**2006-07 Post Season:** None  
**Lettermen Returning/Lost:** 6/6  
**Starters Returning/Lost:** 2/3  
**Series Record:** USC leads 26-1

- SEASON
- TEAM
- STAFF
- RIVALS**
- REVIEW
- RECORDS
- HISTORY



# 2007.08 Non-Conference Opponents



Eddie Biedenbach



## UNC-Asheville

Sat, Jan. 5 \* 7:30 pm (CSS)  
The Colonial Center

### GENERAL INFORMATION

**Location:** Asheville, N.C.  
**Founded:** 1927  
**Enrollment:** 3,500  
**Chancellor:** Dr. Anne Ponder  
**Faculty Rep:** Dr. Herman Holt  
**Athletics Director:** Janet Cone  
**Colors:** Royal Blue and White  
**Facility (Capacity):** Justice Center (1,100)  
**Conference:** Big South

### SPORTS INFORMATION

**Basketball SID:** Mike Gore  
**Office Phone:** 828-251-6923  
**Email:** mgore@unca.edu  
**Mailing Address:**  
One University Hgts.  
407 Justice Center  
CPO #2600  
Asheville, NC 28804-8513

### BASKETBALL INFORMATION

**Head Coach (Alma Mater, Year):**  
Eddie Biedenbach (N.C. State, 1968)  
**Record at UNCA (Years):** 143-175 (11 years)  
**Overall Record:** 172-223 (14 years)  
**Record vs. South Carolina:** 2-2  
**Assistant Coaches:**  
Thomas Nash (Vanderbilt, 1995)  
Nick McDevitt (UNC Asheville, 2001)  
Trip Cogburn (North Carolina, 2002)  
Jeff Lafave (So. Connecticut State, 1993)

**2006-07 Record:** 12-19  
**2006-07 Post Season:** None  
**Lettermen Returning/Lost:** 5/6  
**Starters Returning/Lost:** 0/5

**Series Record:** South Carolina leads 7-1



Tim Welsh



## vs. Providence

Thur., Dec. 6 \* 7 pm (ESPN)  
The Wachovia Center  
Philadelphia, Penn.

### GENERAL INFORMATION

**Location:** Providence, R.I.  
**Founded:** 1917  
**Enrollment:** 3,998  
**President:** Rev. Brian J. Shanley, O.P.  
**Faculty Rep.:** Rev. Robert Morris, O.P.  
**Athletic Director:** Robert G. Driscoll, Jr.  
**Nickname:** Friars  
**Colors:** Black and White  
**Facility (Capacity):** Dunkin' Donuts Center (10,800)  
**Conference:** Big East



### SPORTS INFORMATION

**Basketball SID:** Arthur Parks  
**Office Phone:** (401) 865-2759  
**E-mail:** aparks@providence.edu  
**Mailing Address:**  
Sports Information Office  
549 River Avenue  
Providence College  
Providence, RI 02918

### BASKETBALL INFORMATION

**Head Coach (Alma Mater, Year):**  
Tim Welsh (Potsdam State 1984)  
**Record at Providence (Years):** 145-127 (9 years)  
**Career Record (Years):** 215-149 (12 years)  
**Record vs. South Carolina:** 1-1  
**Associate Head Coach:**  
Steve DeMeo (SUNY-Buffalo, 1987)  
**Assistant Coaches:**  
Vince Cautero (Florida State, 1988)  
Allen Griffin (Syracuse, 2001)

**2006-07 Record:** 18-13  
**2006-07 Post Season:** None  
**Lettermen Returning/Lost:** 11/2  
**Starters Returning/Lost:** 4-1

**Series Record:** Providence leads, 4-2



Brad Greenberg



## Radford

Wed., Jan. 2 \* 7:30 pm  
The Colonial Center

### GENERAL INFORMATION

**Location:** Radford, Va.  
**Founded:** 1910  
**Enrollment:** 9,220  
**President:** Dr. Penelope W. Kyle  
**Faculty Rep.:** Dr. Elizabeth Dore  
**Athletic Director:** TBA  
**Nickname:** Highlanders  
**Colors:** Red and White  
**Arena (Capacity):** Dedmon Center (5,000)  
**Conference:** Big South

### SPORTS INFORMATION

**Basketball SID:** Drew Dickerson  
**Office Phone:** 540-831-5726  
**E-mail:** adickerso@radford.edu  
**Mailing Address:**  
PO Box 6913  
Radford, VA 24142

### BASKETBALL INFORMATION

**Head Coach (Alma Mater, Year):**  
Brad Greenberg (American University 1977)  
**Record at Radford:** First Season  
**Career Record:** First Season  
**Record vs. South Carolina:** First Meeting  
**Assistant Coaches:**  
Rick Hall (Virginia Tech, 1983)  
Cedric Smith (South Florida, 2002)  
Ali Ton (Davidson, 1999)

**2006-07 Record:** 8-22  
**2006-07 Post Season:** None  
**Lettermen Returning/Lost:** 9/4  
**Starters Returning/Lost:** 3/2

**Series Record:** USC leads, 1-0

SEASON

TEAM

STAFF

RIVALS

REVIEW

RECORDS

HISTORY

# 2007.08 Non-Conference Opponents



Tim Carter



Tim Floyd



## SPORTS INFORMATION

**Basketball SID:** David Tuttle  
**Office Phone:** 213-740-8480  
**E-mail:** davidtut@usc.edu  
**Mailing Address:**  
 HER-103  
 Los Angeles, CA 90089-0601

## S.C. State

**Fri., Nov. 9 \* 7:30 pm**  
**The Colonial Center**

### GENERAL INFORMATION

**Location:** Orangeburg, S.C.  
**Founded:** 1896  
**Enrollment:** 4,700  
**Chancellor:** Dr. Andrew Hugine, Jr.  
**Faculty Rep.:** Dr. Clemmie Hill  
**Athletic Director:** Charlene Johnson  
**Nickname:** Bulldogs  
**Colors:** Garnet and Blue  
**Facility (Capacity):** SHM Memorial Center (3,200)  
**Conference:** Mid-Eastern Athletic

### SPORTS INFORMATION

**Basketball SID:** William Hamilton  
**Office Phone:** 803-516-4628  
**E-mail:** whamilton@scsu.edu  
**Mailing Address:**  
 P.O. Box 7128  
 Orangeburg, SC 29117

### BASKETBALL INFORMATION

**Head Coach (Alma Mater, Year):**  
 Tim Carter (Kansas, 1979)  
**Record at SCSU (Years):** First Season  
**Overall Record (Years):** 171-168 (12 years)  
**Record vs. South Carolina:** First Meeting  
**Assistant Coaches (Alma Mater, Year):**  
 Kyle Perry (Georgia Tech, 2001)  
 Henry "Hank" Harris (Tennessee State, 1981)  
 Jermon Riley (Texas-San Antonio, 1999)

**2006-07 Record:** 13-17  
**2006-07 Post Season:** None  
**Lettermen Returning/Lost:** 7/4  
**Starters Returning/Lost:** 3/2

**Series Record:** USC leads, 16-0

## Southern California

**Sat., Nov. 17 \* 7:30 pm (CSS)**  
**The Colonial Center**

### GENERAL INFORMATION

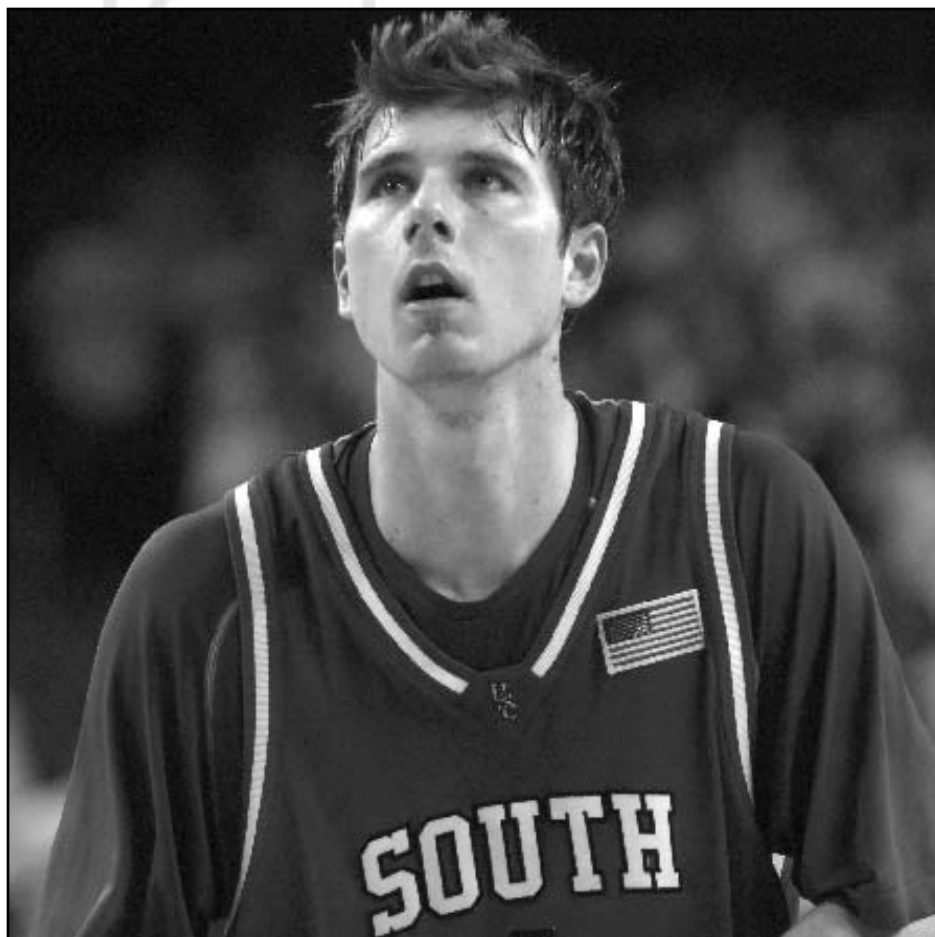
**Location:** Los Angeles, Calif.  
**Founded:** 1880  
**Enrollment:** 32,000  
**President:** Dr. Steven Sample  
**Faculty Rep.:** Dr. Noel Ragsdale  
**Athletic Director:** Mike Garrett  
**Nickname:** Trojans  
**Colors:** Cardinal and Gold  
**Facility (Capacity):** Galen Center (10,258)  
**Conference:** Pacific-10

### BASKETBALL INFORMATION

**Head Coach (Alma Mater, Year):**  
 Tim Floyd (Louisiana Tech, 1977)  
**Record at USC (Years):** 42-25 (2 years)  
**Overall Record (Years):** 285-155 (14 years)  
**Record vs. South Carolina:** 0-1  
**Assistant Coaches (Alma Mater, Year):**  
 Gib Arnold (BYU, 1995)  
 Bob Cantu (Chapman, 1997)  
 Phil Johnson (Central Oklahoma, 1981)

**2006-07 Record:** 25-12  
**2006-07 Post Season:** NCAA Sweet 16  
**Lettermen Returning/Lost:** 9/5  
**Starters Returning/Lost:** 2/3

**Series Record:** South Carolina leads 2-0



Bryce Sheldon scored a career-high 22 points, helping South Carolina defeat Southern California 80-74 and spoil the Trojans' season opener in their new on-campus arena. Sheldon was a career-high 6-7 from beyond the arc.

- SEASON
- TEAM
- STAFF
- RIVALS**
- REVIEW
- RECORDS
- HISTORY



# Series Information vs. SEC Opponents

## Series Breakdown vs. Alabama

Games Won	USC	Alabama
At Columbia	7	5
At Tuscaloosa	1	10
At Neutral Sites	2	4
<b>Total</b>	<b>10</b>	<b>19</b>

### Most Points Scored

By South Carolina		
At Columbia	90 in 1995-96 (90-67) and 2003-04 (90-82)	
At Tuscaloosa	80 in 1992-93 (80-97) Loss	
By Alabama		
At Columbia	92 in 1977-78 (92-67)	
At Tuscaloosa	97 in 1992-93 (97-80)	

### Biggest Winning Margins

By South Carolina		
At Columbia	23 in 1995-96 (90-67)	
At Tuscaloosa	2 in 1996-97 (62-60)	
By Alabama		
At Columbia	25 in 1977-78 (92-67)	
At Tuscaloosa	34 in 1930-31 (45-11)	

## Series Breakdown vs. Florida

Games Won	USC	Florida
At Columbia	11	16
At Gainesville	6	14
At Neutral Sites	2	2
<b>Total</b>	<b>19</b>	<b>32</b>

### Most Points Scored

By South Carolina		
At Columbia	82 in 1999-2000 (82-86) Loss	
At Gainesville	81 in 1992-93 (81-76)	
By Florida		
At Columbia	86 in 1999-2000 (86-62)	
At Gainesville	96 in 2002-03 (63-96)	

### Biggest Winning Margins

By South Carolina		
At Columbia	21 in 1933-34 (42-31)	
At Gainesville	12 in 1934-35 (28-16)	
By Florida		
At Columbia	34 in 2006-07 (50-84)	
At Gainesville	33 in 2002-03 (63-96)	

## Series Breakdown vs. Arkansas

Games Won	USC	Arkansas
At Columbia	4	4
At Fayetteville	2	6
At Neutral Sites	1	2
<b>Total</b>	<b>7</b>	<b>12</b>

### Most Points Scored

By South Carolina		
At Columbia	78 in 1996-97 (78-65)	
At Fayetteville	88 in 1997-98 (88-96) Loss	
By Arkansas		
At Columbia	88 in 1994-95 (88-73)	
At Fayetteville	96 in 1997-98 (96-88)	

### Biggest Winning Margins

By South Carolina		
At Columbia	13 in 1996-97 (78-65)	
At Fayetteville	11 in 1999-2000 (76-65)	
By Arkansas		
At Columbia	15 in 1994-95 (88-73)	
At Fayetteville	26 in 1993-94 (79-53)	

## Series Breakdown vs. Georgia

Games Won	USC	Georgia
At Columbia	26	15
At Athens	14	26
At Neutral Sites	3	5
<b>Total</b>	<b>43</b>	<b>46</b>

### Most Points Scored

By South Carolina		
At Columbia	97 in 1956-57 (97-74) and 1961-62 (97-72)	
At Athens	96 in 1956-57 (96-81)	
By Georgia		
At Columbia	96 in 1993-94 (96-85)	
At Athens	112 in 1963-64 (112-90)	

### Biggest Winning Margins

By South Carolina		
At Columbia	32 in 1943-44 (67-35)	
At Athens	21 in 2003-04 (84-63)	
By Georgia		
At Columbia	15 in 1938-39 (49-34)	
At Athens	28 in 1999-2000 (90-62)	

## Series Breakdown vs. Auburn

Games Won	USC	Auburn
At Columbia	5	8
At Auburn	5	7
At Neutral Sites	1	2
<b>Total</b>	<b>11</b>	<b>17</b>

### Most Points Scored

By South Carolina		
At Columbia	86 in 1970-71 (86-69)	
At Auburn	86 in 1969-70 (86-62)	
By Auburn		
At Columbia	83 in 1992-93 (83-81)	
At Auburn	88 in 1993-94 (88-70)	

### Biggest Winning Margins

By South Carolina		
At Columbia	17 in 1970-71 (86-69)	
At Auburn	24 in 1969-70 (86-62)	
By Auburn		
At Columbia	28 in 1998-99 (76-48)	
At Auburn	18 in two games (last 1993-94)	

## Series Breakdown vs. Kentucky

Games Won	USC	Kentucky
At Columbia	4	15
At Lexington	1	20
At Neutral Sites	2	4
<b>Total</b>	<b>7</b>	<b>39</b>

### Most Points Scored

By South Carolina		
At Columbia	84 in 1996-97 (84-79) OT	
At Lexington	89 in 2006-07 (89-95) Loss	
By Kentucky		
At Columbia	108 in 1992-93 (108-82)	
At Lexington	126 in 1979-80 (126-81)	

### Biggest Winning Margins

By South Carolina		
At Columbia	12 in 2004-05 (73-61)	
At Lexington	6 in 1996-97 (72-66)	
By Kentucky		
At Columbia	38 in 2006-07 (49-87) Loss	
At Lexington	45 in 1979-80 (126-81)	

# Series Information vs. SEC Opponents



## Series Breakdown vs. Louisiana State

Games Won	USC	LSU
At Columbia	5	4
At Baton Rouge	3	5
At Neutral Sites	3	0
<b>Total</b>	<b>11</b>	<b>9</b>

### Most Points Scored

By South Carolina		
At Columbia	106	in 1995-96 (106-68)
At Baton Rouge	80	in 1996-97 (80-65)
By Louisiana State		
At Columbia	77	in 1993-94 (77-71)
At Baton Rouge	85	in 1992-93 (85-62)

### Biggest Winning Margins

By South Carolina		
At Columbia	38	in 1995-96 (106-68)
At Baton Rouge	15	in 1996-97 (80-65)
By Louisiana State		
At Columbia	18	in 1991-92 (74-56)
At Baton Rouge	23	in 1992-93 (85-62)

## Series Breakdown vs. Tennessee

Games Won	USC	Tennessee
At Columbia	14	7
At Knoxville	7	18
At Neutral Sites	2	1
<b>Total</b>	<b>23</b>	<b>26</b>

### Most Points Scored

By South Carolina		
At Columbia	111	in 1992-93 (111-107) 2OT
At Knoxville	95	in 1992-93 (95-85)
By Tennessee		
At Columbia	107	in 1992-93 (107-111) Loss
At Knoxville	96	in 1954-55 (96-82)

### Biggest Winning Margins

By South Carolina		
At Columbia	32	in 1996-97 (73-41)
At Knoxville	34	in 2001-02 (94-60)
By Tennessee		
At Columbia	15	in 1998-99 (65-50)
At Knoxville	29	in 1998-99 (86-57)

## Series Breakdown vs. Ole Miss

Games Won	USC	Ole Miss
At Columbia	7	1
At Oxford	0	8
At Neutral Sites	4	3
<b>Total</b>	<b>11</b>	<b>12</b>

### Most Points Scored

By South Carolina		
At Columbia	88	in 1992-93 (88-73)
At Oxford	75	in 1999-2000 (75-83)
By Ole Miss		
At Columbia	73	in 1992-93 (88-73)
At Oxford	83	in 1999-00 (75-83) Loss

### Biggest Winning Margins

By South Carolina		
At Columbia	13	in 1996-97 (78-65); 13 in 2006-07 (76-63)
At Oxford	11	in 1999-2000 (76-65)
By Ole Miss		
At Columbia	15	in 1994-95 (88-73)
At Oxford	26	in 1993-94 (79-53)

## Series Breakdown vs. Vanderbilt

Games Won	USC	Vanderbilt
At Columbia	10	8
At Nashville	9	10
At Neutral Sites	2	1
<b>Total</b>	<b>21</b>	<b>19</b>

### Most Points Scored

By South Carolina		
At Columbia	91	in 1993-94 (91-96) Loss
At Nashville	99	in 2006-07 (90-99 OT) Loss
By Vanderbilt		
At Columbia	96	in 1993-94 (96-91)
At Nashville	107	in 1995-96 (107-97)

### Biggest Winning Margins

By South Carolina		
At Columbia	21	in 1996-97 (74-53)
At Nashville	23	in 2001-02 (66-43)
By Vanderbilt		
At Columbia	9	in 2001-02 (60-51), 2006-06 (90-99)
At Nashville	28	in 1963-64 (106-78)

## Series Breakdown vs. Mississippi State

Games Won	USC	Miss. State
At Columbia	4	4
At Starkville	2	6
At Neutral Sites	2	0
<b>Total</b>	<b>8</b>	<b>10</b>

### Most Points Scored

By South Carolina		
At Columbia	83	in 2005-06 (83-61)
At Starkville	73	in two games (last 2000-01)
By Mississippi State		
At Columbia	79	in 2003-04 (79-75)
At Starkville	83	in 1992-93 (83-63)

### Biggest Winning Margins

By South Carolina		
At Columbia	22	in 2005-06 (83-61)
At Starkville	8	in 1996-97 (73-65)
By Mississippi State		
At Columbia	7	in 2001-02 (64-57)
At Starkville	20	in 1992-93 (83-63)

## Series Breakdown vs. Southeastern Conference

Games Won	USC	SEC
At Columbia	96	87
On SEC Away Courts	54	130
At Neutral Sites	21	20
<b>Total</b>	<b>171</b>	<b>237</b>

### Most Points Scored

By South Carolina		
At Columbia	111	vs. Tennessee in 1992-93 (111-107)
On the Road	112	vs. Georgia in 1963-64 (112-90)
By SEC Teams		
At Columbia	108	by Kentucky in 1992-93 (108-82)
On the Road	126	by Kentucky in 1979-80 (126-81)

### Biggest Winning Margins

By South Carolina		
At Columbia	38	vs. Louisiana State in 1995-96 (106-68)
On the Road	34	vs. Tennessee in 2001-02 (94-60)
By SEC Teams		
At Columbia	38	by Kentucky in 2006-07 (49-87) Loss
On the Road	45	by Kentucky in 1979-80 (126-81)

- SEASON
- TEAM
- STAFF
- RIVALS**
- REVIEW
- RECORDS
- HISTORY

**100 YEARS FACT:** South Carolina's first indoor basketball home was the Carolina Gymnasium - now known as Longstreet Theater.



# 2008 SEC TV Schedule

## JANUARY

### 8 (Tuesday)

\*Florida at Alabama [ESPN] 8:00 p.m. CT

### 9 (Wednesday)

\*Ole Miss at Tennessee [LFS] 8:00 p.m. ET

### 10 (Thursday)

Arkansas at Auburn [ESPN/ESPN2] 8:00 p.m. CT

### 12 (Saturday)

\*Auburn at Florida [LFS] Noon ET

\*Vanderbilt at Kentucky [CBS] 1:30 p.m. ET

\*Georgia at Mississippi State [LFS] 1:00 p.m. CT

\*LSU at Ole Miss [FSN/SUN] 5:00 p.m. CT

\*Tennessee at S. Carolina [FSN/SUN] 8:00 p.m. ET

### 13 (Sunday)

\*Alabama at Arkansas [LFS] 12:30/3:00 p.m. CT

### 15 (Tuesday)

\*Kentucky at Mississippi State [ESPN] 8:00 p.m. CT

### 16 (Wednesday)

\*Florida at Ole Miss [LFS] 7:00 p.m. CT

### 17 (Thursday)

\*Vanderbilt at Tennessee [ESPN/ESPN2] 7:00 p.m. ET

### 19 (Saturday)

\*LSU at Vanderbilt [LFS] Noon CT

\*Mississippi State at Alabama [LFS] 2:00 p.m. CT

Ohio State at Tennessee [CBS] 3:30 p.m. ET

\*Ole Miss at Auburn [FSN/SUN] 4:00 p.m. CT

\*Arkansas at Georgia [FSN/SUN] 7:00 p.m. ET

\*Kentucky at Florida [ESPN] 9:00 p.m. ET

### 22 (Tuesday)

\*Tennessee at Kentucky [ESPN] 9:00 p.m. ET

### 23 (Wednesday)

\*Florida at South Carolina [LFS] 8:00 p.m. ET

### 26 (Saturday)

\*South Carolina at Kentucky [LFS] 1:00 p.m. ET

\*Auburn at Alabama [LFS] 2:00 p.m. CT

\*Ole Miss at Mississippi St. [FSN/SUN] 4:00 p.m. CT

\*Georgia at Tennessee [FSN/SUN] 7:00 p.m. ET

\*Arkansas at LSU [ESPN Classic] 8:00 p.m. CT

### 27 (Sunday)

\*Vanderbilt at Florida [LFS] 1:00 p.m. ET

### 29 (Tuesday)

\*Tennessee at Alabama [ESPN] 8:00 p.m. CT

### 30 (Wednesday)

\*Mississippi State at Arkansas [LFS] 7:00 p.m. CT

## FEBRUARY

### 2 (Saturday)

\*Kentucky at Georgia [CBS] 1:00 p.m. ET

\*LSU at Alabama [LFS] 2:00 p.m. CT

\*Florida at Arkansas [LFS] 2:00 p.m. CT

\*South Carolina at Ole Miss [SS] 4:00 p.m. CT

\*Auburn at Vanderbilt [FSN/SUN] 4:00 p.m. CT

\*Tennessee at Mississippi St. [FSN/SUN] 6:00 p.m. CT

### 5 (Tuesday)

\*Florida at Tennessee [ESPN] 9:00 p.m. ET

### 6 (Wednesday)

\*Kentucky at Auburn [LFS] 7:00 p.m. CT

### 9 (Saturday)

\*Alabama at Kentucky [LFS] 1:00 p.m. ET

\*Tennessee at LSU [LFS] 2:00 p.m. CT

\*Georgia at Florida [LFS] 3:00 p.m. ET

\*Ole Miss at Arkansas [SS/@FSNSW] 4:00 p.m. CT

\*Vanderbilt at S. Carolina [FSN/SUN] 5:00 p.m. ET

\*Mississippi State at Auburn [FSN/SUN] 6:00 p.m. CT

### 12 (Tuesday)

\*Kentucky at Vanderbilt [ESPN] 8:00 p.m. CT

### 13 (Wednesday)

\*LSU at Florida [LFS] 8:00 p.m. ET

\*Arkansas at Tennessee [LFS] 8:00 p.m. ET

### 16 (Saturday)

\*Kentucky at LSU [LFS] Noon CT

\*Florida at Vanderbilt [LFS] 2:00 p.m. CT

\*Tennessee at Georgia [LFS] 3:00 p.m. ET

\*Arkansas at Mississippi State [ESPN] 3:00 p.m. CT

\*Auburn at Ole Miss [FSN/SUN] 4:00 p.m. CT

\*Alabama at South Carolina [FSN/SUN] 7:00 p.m. ET

### 19 (Tuesday)

\*Georgia at Kentucky [ESPN] 9:00 p.m. ET

### 20 (Wednesday)

\*LSU at Arkansas [LFS] 7:00 p.m. CT

\*South Carolina at Florida [LFS] 8:00 p.m. ET

### 23 (Saturday)

\*Arkansas at Kentucky [CBS] 2:00 p.m. ET

\*Georgia at Vanderbilt [LFS] 3:00 p.m. CT

\*Mississippi State at S. Carolina [LFS] 4:00 p.m. ET

\*Ole Miss at LSU [FSN/SUN] 5:00 p.m. CT

Tennessee at Memphis [ESPN] 8:00 p.m. CT

### 24 (Sunday)

Alabama at Auburn [CBS] 1:00 p.m. CT

### 26 (Tuesday)

Tennessee at Vanderbilt [ESPN] 8:00 p.m. CT

### 27 (Wednesday)

\*Arkansas at Alabama [LFS] 7:00 p.m. CT

\*Ole Miss at Kentucky [LFS] 8:00 p.m. ET

## MARCH

### 1 (Saturday)

\*Alabama at Ole Miss [LFS] 1:00 p.m. CT

\*Mississippi State at Florida [CBS] 2:00 p.m. ET

\*Vanderbilt at Arkansas [LFS] 3:00 p.m. CT

\*South Carolina at Auburn [FSN/SUN] 5:00 p.m. CT

### 2 (Sunday)

\*Kentucky at Tennessee [CBS] Noon ET

\*Georgia at LSU [LFS] 1:00 p.m. CT

### 4 (Tuesday)

Arkansas at Ole Miss [ESPN] 8:00 p.m. CT

### 5 (Wednesday)

\*Kentucky at South Carolina [LFS] 7:00 p.m. ET

\*Alabama at LSU [CST] 7:00 p.m. CT

\*Tennessee at Florida [LFS] 9:00 p.m. ET

### 8 (Saturday)

Wild Card Game #1 [LFS] 2:00 p.m. ET

Wild Card Game #2 [LFS] 4:00 p.m. ET

Wild Card Game #3 [ESPN Classic] 6:00 p.m. ET

\*LSU at Mississippi State TBA

\*Vanderbilt at Alabama TBA

\*Auburn at Arkansas TBA

\*Ole Miss at Georgia TBA

### 9 (Sunday)

\*Florida at Kentucky [CBS] Noon ET

\*South Carolina at Tennessee [LFS] 2:00 p.m. ET

## 2008 SEC Men's Basketball Tournament

### Georgia Dome, Atlanta, Georgia

### 13 (Thursday)

SEC Tournament Game 1 [LFS] 1:00 p.m. ET

SEC Tournament Game 2 [LFS] 3:15 p.m. ET

SEC Tournament Game 3 [LFS] 7:30 p.m. ET

SEC Tournament Game 4 [LFS] 9:45 p.m. ET

### 14 (Friday)

SEC Tournament Game 5 [LFS] 1:00 p.m. ET

SEC Tournament Game 6 [LFS] 3:15 p.m. ET

SEC Tournament Game 7 [LFS] 7:30 p.m. ET

SEC Tournament Game 8 [LFS] 9:45 p.m. ET

### 15 (Saturday)

SEC Tournament Game 9 [LFS] 1:00 p.m. ET

SEC Tournament Game 10 [LFS] 3:15 p.m. ET

### 16 (Sunday)

Championship Game (Game 11) [CBS] 1:00 p.m. ET

## ALL TIMES LOCAL

Game Times and Dates are subject to change.

## KEY

\*SEC Game; [ ] TV Game; #Taped Delay; FSN/SUN includes FSN South, FSN Southwest and SUN Sports; @:State of Arkansas Only; ACN: Alabama Cable Network; ARSN: Arkansas Razorback Sports Network; BBSN: Big Blue Sports Network; CSS: Comcast Sports Southeast; CST: Cox Sports Television; FSN: Fox Sports Net; FSNS: FSN South; FSN Fla: FSN Florida; FSNSW: FSN Southwest; LFS: Lincoln Financial Sports; SS: SportSouth; SUN: Sun Sports; VS: Versus/

# 2008 SEC Opponents



Mark Gottfried



John Pelphrey



Jeff Lebo



## Alabama

Sat., Feb. 16 \* 7 pm (FSN)  
The Colonial Center

### GENERAL INFORMATION

**Location:** Tuscaloosa, Ala.  
**Founded:** 1831  
**Enrollment:** 20,969  
**President:** Dr. Robert E. Witt  
**Faculty Rep.:** Joe Hornsby  
**Athletic Director:** Mal Moore  
**Nickname:** Crimson Tide  
**Colors:** Crimson and White  
**Facility (Capacity):** Coleman Coliseum (15,316)  
**Conference:** Southeastern (West)

### SPORTS INFORMATION

**Basketball SID:** Becky Hopf  
**Office Phone:** 205-348-3600  
**E-mail:** bhopf@ia.ua.edu  
**Mailing Address:**  
Coleman Coliseum Room 170  
23 Paul Bryan Drive  
Tuscaloosa, AL 35487-0391

### BASKETBALL INFORMATION

**Head Coach (Alma Mater, Year):**  
Mark Gottfried (Alabama, 1993)  
**Record at UA (Years):** 157-99 (9 years)  
**Overall Record (Years):** 248-132 (12 years)  
**Record vs. South Carolina:** 4-1  
**Assistant Coaches (Alma Mater, Year):**  
Philip Pearson (Alabama, 1993)  
Tom Asbury (Wyoming, 1968)  
James Holland (USC Spartanburg, 1985)

**2006-07 Records:** 20-12, 7-9 SEC (5th - West)  
**2006-07 Post Season:** NIT First Round  
**Lettermen Returning/Lost:** 8/1  
**Starters Returning/Lost:** 4/1

**Series Record:** Alabama leads, 20-9

## at Arkansas

Wed., Jan. 16 \* 8:05 pm  
Bud Walton Arena

### GENERAL INFORMATION

**Location:** Fayetteville, Ark.  
**Founded:** 1871  
**Enrollment:** 17,938  
**Chancellor:** Dr. John White  
**Faculty Rep.:** Howard Brill  
**Athletic Director:** Frank Broyles  
**Nickname:** Razorbacks  
**Colors:** Cardinal and White  
**Facility (Capacity):** Bud Walton Arena (19,200)  
**Conference:** Southeastern (West)

### SPORTS INFORMATION

**Basketball SID:** Robby Edwards  
**Office Phone:** 479-575-6533  
**E-mail:** robbye@uark.edu  
**Mailing Address:**  
Broyles Athletic Center  
PO Box 7777  
Fayetteville, AR 72702

### BASKETBALL INFORMATION

**Head Coach (Alma Mater, Year):**  
John Pelphrey (Kentucky, 1992)  
**Record at UA (Years):** First Year  
**Overall Record (Years):** 80-67 (5 years)  
**Record vs. South Carolina:** First Meeting  
**Assistant Coaches (Alma Mater, Year):**  
Rob Evans (New Mexico State, 1968)  
Tom Ostrom (Minnesota, 1997)  
Isaac Brown (Northeast Louisiana, 1995)

**2006-07 Records:** 21-14, 7-9 SEC (3rd - West)  
**2006-07 Post Season:** NCAA First Round  
**Lettermen Returning/Lost:** 9/3  
**Starters Returning/Lost:** 5/0

**Series Record:** Arkansas leads, 11-7

## at Auburn

Sat., March 1 \* 6 pm (FSN)  
Beard-Evans Memorial Coliseum

### GENERAL INFORMATION

**Location:** Auburn, Ala.  
**Founded:** 1856  
**Enrollment:** 22,928  
**Interim President:** Dr. Ed Richardson  
**Faculty Rep.:** Marcia L. Boosinger  
**Athletic Director:** Jay Jacobs  
**Nickname:** Tigers  
**Colors:** Burnt Orange and Navy Blue  
**Facility (Capacity):** Beard-Evans Memorial Coliseum (10,500)  
**Conference:** Southeastern (West)

### SPORTS INFORMATION

**Basketball SID:** Chuck Gallina  
**Office Phone:** 334-844-9701  
**E-mail:** gallic@auburn.edu  
**Mailing Address:**  
PO Box 351  
Auburn, AL 36831-0351

### BASKETBALL INFORMATION

**Head Coach (Alma Mater, Year):**  
Jeff Lebo (North Carolina, 1989)  
**Record at AU (Years):** 43-48 (3 years)  
**Overall Record (Years):** 158-111 (9 years)  
**Record vs. South Carolina:** 2-1  
**Assistant Coaches (Alma Mater, Year):**  
John Cooper (Wichita State, 1991)  
Brandon Johnson (Georgia State, 1997)  
Dave Lebo (Elizabethtown, 1966)

**2006-07 Records:** 17-15, 7-9 SEC (4th - West)  
**2006-07 Post Season:** None  
**Lettermen Returning/Lost:** 7/5  
**Starters Returning/Lost:** 5/1

**Series Record:** Auburn leads, 17-11

- SEASON
- TEAM
- STAFF
- RIVALS**
- REVIEW
- RECORDS
- HISTORY





# 2008 SEC Opponents



Billy Donovan



**Florida**  
vs. Wed., Jan 23 \* 8 pm (LF)  
The Colonial Center

at Wed., Feb. 20 \* 8 pm (LF)  
O'Connell Center

### GENERAL INFORMATION

**Location:** Gainesville, Fla.  
**Founded:** 1853  
**Enrollment:** 50,000  
**President:** Dr. J. Bernard Machen  
**Faculty Rep.:** Dr. Jill Varnes  
**Athletic Director:** Jeremy Foley  
**Nickname:** Gators  
**Colors:** Orange and Blue  
**Facility (Capacity):** O'Connell Ctr. (12,000)  
**Conference:** Southeastern (East)

### SPORTS INFORMATION

**Basketball SID:** Fred Demarest  
**Office Phone:** (352) 375-4683 (ext. 6100)  
**E-mail:** Fredd@gators.uaa.ufl.edu  
**Mailing Address:**  
P.O. Box 14485  
Gainesville, FL 32604

### BASKETBALL INFORMATION

**Head Coach (Alma Mater, Year):**  
Billy Donovan (Providence, 1987)  
**Record at Florida (Years):** 261-103 (11 years)  
**Overall Record (Years):** 296-123 (13 years)  
**Record vs. South Carolina:** 16-8  
**Assistant Coaches (Alma Mater, Year):**  
Anthony Grant (Dayton, 1987)  
Rob Lanier (St. Bonaventure, 1990)  
Larry Shyatt (College of Wooster, 1973)  
Lewis Preston (VMI, 1993)

**2006-07 Records:** 35-5, 13-3 SEC (1st – East)  
**2006-07 Post Season:** NCAA Champions  
**Lettermen Returning/Lost:** 4/10  
**Starters Returning/Lost:** 0/5

**Series Record:** Florida leads, 32-19



Dennis Felton



**Georgia**  
vs. Wed., Jan. 30 \* 7:30 pm  
The Colonial Center

at Wed., Feb. 13 \* 7:30 pm  
Stegeman Coliseum

### GENERAL INFORMATION

**Location:** Athens, Ga.  
**Founded:** 1785  
**Enrollment:** 33,660  
**President:** Dr. Michael F. Adams  
**Faculty Rep.:** Jere Morehead  
**Athletic Director:** Damon Evans  
**Nickname:** Bulldogs  
**Colors:** Red and Black  
**Facility (Capacity):** Stegeman Coliseum (10,523)  
**Conference:** Southeastern (East)

### SPORTS INFORMATION

**Basketball SID:** Tim Hix  
**Office Phone:** 706-542-1621  
**E-mail:** thix@sports.uga.edu  
**Mailing Address:**  
P.O. Box 1472  
Athens, GA 30603

### BASKETBALL INFORMATION

**Head Coach (Alma Mater, Year):**  
Dennis Felton (Howard, 1985)  
**Record at UGA (Years):** 58-63 (4 years)  
**Overall Record (Years):** 158-117 (9 years)  
**Record vs. South Carolina:** 4-4  
**Associate Head Coach (Alma Mater, Year):**  
Pete Herrmann (SUNY-Geneseo, 1970)  
**Assistant Coaches (Alma Mater, Year):**  
Mike Jones (Howard, 1990)  
Desmond Oliver (Dominican, 1992)

**2006-07 Record:** 19-14, 8-8 SEC (5th – East)  
**2006-07 Post Season:** NIT Second Round  
**Lettermen Returning/Lost:** 11/4  
**Starters Returning/Lost:** 5/0

**Series Record:** Series Tied , 45-45



Billy Gillispie



**Kentucky**  
at Sat., Jan. 26 \* 1 pm (LF)  
Rupp Arena

vs. Wed., March 5 \* 7 pm (LF)  
The Colonial Center

### GENERAL INFORMATION

**Location:** Lexington, Ky.  
**Founded:** 1865  
**Enrollment:** 26,545  
**President:** Dr. Lee T. Todd, Jr.  
**Faculty Rep.:** Dr. Alan DeSantis  
**Athletic Director:** Mitch Barnhart  
**Nickname:** Wildcats  
**Colors:** Blue and White  
**Facility (Capacity):** Rupp Arena (23,000)  
**Conference:** Southeastern (East)

### SPORTS INFORMATION

**Basketball SID:** Scott Stricklin  
**Office Phone:** 859-257-3838  
**E-mail:** stricklin@email.uky.edu  
**Mailing Address:**  
Room 23, Memorial Coliseum  
Lexington, KY 40506

### BASKETBALL INFORMATION

**Head Coach (Alma Mater, Year):**  
Billy Gillispie (Texas State, 1983)  
**Record at UK (Years):** First Year  
**Overall Record (Years):** 100-58 (5 years)  
**Record vs. South Carolina:** First Meeting  
**Assistant Coaches (Alma Mater, Year):**  
Jeremy Cox (Mesa State, 1991)  
Glynn Cyprien (Texas San Antonio, 2004)

**2006-07 Records:** 22-12, 9-7 SEC (4rd – East)  
**2006-07 Post Season:** NCAA Second Round  
**Lettermen Returning/Lost:** 10/4  
**Starters Returning/Lost:** 3/2

**Series Record:** Kentucky leads, 39-7

- SEASON
- TEAM
- STAFF
- RIVALS
- REVIEW
- RECORDS
- HISTORY

# 2008 SEC Opponents



John Brady



Andy Kennedy



Rick Stansbury



**Louisiana State**  
**Wed., Feb. 27 \* 7:30 pm**  
**The Colonial Center**

**GENERAL INFORMATION**

**Location:** Baton Rouge, La.  
**Founded:** 1860  
**Enrollment:** 31,234  
**Chancellor:** Sean O'Keefe  
**Faculty Rep.:** Dydia Delyser  
**Athletic Director:** Skip Bertman  
**Nickname:** Fighting Tigers  
**Colors:** Purple and Gold  
**Facility (Capacity):** Pete Maravich A.C. (14,164)  
**Conference:** Southeastern (West)

**SPORTS INFORMATION**

**Basketball SID:** C. Kent Lowe  
**Office Phone:** 225-578-8226  
**E-mail:** clowe@lsu.edu  
**Mailing Address:**  
 P.O. Box 25095  
 Baton Rouge, LA 70894

**BASKETBALL INFORMATION**

**Head Coach (Alma Mater, Year):**  
 John Brady (Belhaven, 1976)  
**Record at LSU (Years):** 184-126 (10 years)  
**Overall Record (Years):** 273-204 (16 years)  
**Record vs. South Carolina:** 6-5  
**Assoc. Head Coach (Alma Mater, Year):**  
 Butch Pierre (Mississippi State, 1984)  
**Assistant Coaches (Alma Mater, Year):**  
 John Treloar (Belhaven, 1979)  
 Scott Soprych (Indiana, 2003)  
**2006-07 Records:** 17-15, 5-11 SEC (6st -West)  
**2006-07 Post Season:** None  
**Lettermen Returning/Lost:** 3/2  
**Starters Returning/Lost:** 9/2  
**Series Record:** USC leads, 12-8

**at Mississippi**  
**Sat., Feb. 2 \* 5 pm (FSN)**  
**Tad Smith Coliseum**

**GENERAL INFORMATION**

**Location:** Oxford, Miss.  
**Founded:** 1848  
**Enrollment:** 16,928  
**Chancellor:** Dr. Robert C. Khayat  
**Faculty Rep.:** Dr. Robert Weems  
**Athletic Director:** Pete Boone  
**Nickname:** Rebels  
**Colors:** Red and Navy Blue  
**Facility (Capacity):** C.M. "Tad" Smith Coliseum (8,700)  
**Conference:** Southeastern (West)

**SPORTS INFORMATION**

**Basketball SID:** Kyle Campbell  
**Office Phone:** 662-915-7544  
**E-mail:** ekcampbe@olemiss.edu  
**Mailing Address:**  
 P.O. Box 217  
 Oxford, MS 38677

**BASKETBALL INFORMATION**

**Head Coach (Alma Mater, Year):**  
 Andy Kennedy (UAB, 1991)  
**Record at Mississippi (Years):** 21-13 (1 year)  
**Overall Record (Years):** 21-13 (1 year)  
**Record vs. South Carolina:** 0-1  
**Assistant Coaches (Alma Mater, Year):**  
 Michael White (Ole Miss, 2000)  
 Owen Miller (Mississippi College, 1994)  
 Torrey Ward (UAB, 2001)  
**2006-07 Records:** 21-13, 8-8 SEC (2nd - West)  
**2006-07 Post Season:** NIT (2nd Round)  
**Lettermen Returning/Lost:** 9/4  
**Starters Returning/Lost:** 4/1  
**Series Record:** USC leads 12-11

**Mississippi State**  
**\* 100 Years Reunion \***  
**Sat., Feb. 23 \* 4 pm (LF)**  
**The Colonial Center**

**GENERAL INFORMATION**

**Location:** Starkville, Miss.  
**Founded:** 1878  
**Enrollment:** 16,101  
**President:** Dr. Robert H. Foglesong  
**Faculty Rep.:** Dr. Steven C. Turner  
**Athletic Director:** Larry Templeton  
**Nickname:** Bulldogs  
**Colors:** Maroon and White  
**Facility (Capacity):** Humphrey Coliseum (10,500)  
**Conference:** Southeastern (West)

**SPORTS INFORMATION**

**Basketball SID:** David Rosinski  
**Office Phone:** 662-325-3595  
**E-mail:** rosinski@athletics.msstate.edu  
**Mailing Address:**  
 P.O. Box 5308  
 Mississippi State, MS 39762

**BASKETBALL INFORMATION**

**Head Coach (Alma Mater, Year):**  
 Rick Stansbury (Campbellsville, 1982)  
**Record at MSU (Years):** 185-104 (9 years)  
**Overall Record (Years):** Same  
**Record vs. South Carolina:** 6-5  
**Assistant Coaches (Alma Mater, Year):**  
 Robert Kirby (Pan American, 1983)  
 Phil Cunningham (Campbellsville, 1990)  
 Mark White (Austin Peay State, 1988)  
**2006-07 Records:** 21-14, 8-8 SEC (T. 1st - West)  
**2006-07 Post Season:** NIT (Semi-Finals)  
**Lettermen Returning/Lost:** 9/3  
**Starters Returning/Lost:** 4/1  
**Series Record:** Mississippi State leads, 10-8

- SEASON
- TEAM
- STAFF
- RIVALS**
- RECORDS
- HISTORY



# 2008 SEC Opponents



**Bruce Pearl**



**Kevin Stallings**



## SPORTS INFORMATION

**Basketball SID:** Andy Boggs  
**Office Phone:** 615-343-1847  
**E-mail:** andy.boggs@vanderbilt.edu  
**Mailing Address:**  
2601 Jess Neely Drive  
Nashville, TN 37212

## BASKETBALL INFORMATION

**Head Coach (Alma Mater, Year):**  
Kevin Stallings (Purdue, 1982)  
**Record at VU (Years):** 144-108 (8 years)  
**Overall Record (Years):** 267-171 (14 years)  
**Record vs. South Carolina:** 6-10  
**Assistant Coaches (Alma Mater, Year):**  
Brad Frederick (North Carolina, 1999)  
King Rice (UNC, 1992)  
Dan Muller (Illinois State, 1998)  
Tom Richardson (St. Xavier [Ill.], 1977)

**2006-07 Records:** 22-12, 10-6 SEC (2nd – East)  
**2006-07 Post Season Play:** NCAA Sweet 16  
**Lettermen Returning/Lost:** 7/5  
**Starters Returning/Lost:** 3/2

**Series Record:** USC leads, 21-19

## Tennessee

Sat., Jan. 12 \* 8 pm (FSN)  
The Colonial Center

at Sun., March 9 \* 2 pm (LF)  
Thompson-Boling Arena

### GENERAL INFORMATION

**Location:** Knoxville, Tenn.  
**Founded:** 1794  
**Enrollment:** 25,244  
**President:** Dr. John Petersen  
**Faculty Representative:** Dr. Todd Diacon  
**Athletic Director:** Mike Hamilton  
**Nickname:** Volunteers  
**Colors:** Orange and White  
**Facility (Capacity):** Thompson-Boling Arena (24,535)  
**Conference:** Southeastern (East)

### SPORTS INFORMATION

**Basketball SID:** Craig Pinkerton  
**Office Phone:** 865-974-1212  
**E-mail:** craig@tennessee.edu  
**Mailing Address:**  
PO Box 15016  
Knoxville, TN 37901

### BASKETBALL INFORMATION

**Head Coach (Alma Mater, Year):**  
Bruce Pearl (Boston College, 1982)  
**Record at UT (Years):** 46-19 (2 Years)  
**Overall Record (Years):** 363-103 (15 years)  
**Record vs. South Carolina:** 4-1  
**Associate Head Coach (Alma Mater, Year):**  
Tony Jones (Concordia University, 1993)  
**Assistant Coaches (Alma Mater, Year):**  
Steve Forbes (Southern Arkansas, 1988)  
Jason Shay (Iowa, 1995)

**2006-07 Records:** 24-11, 10-6 SEC (3rd – East)  
**2006-07 Post Season:** NCAA Sweet 16  
**Lettermen Returning/Lost:** 8/1  
**Starters Returning/Lost:** 4/1

**Series Record:** Tennessee leads, 27-22

## Vanderbilt

at Wed., Jan. 9 \* 8 pm  
Memorial Gym

Wed., Feb. 9 \* 5 pm (FSN)  
The Colonial Center

### GENERAL INFORMATION

**Location:** Nashville, Tenn.  
**Founded:** 1873  
**Enrollment:** 6,402  
**Chancellor:** Gordon Gee  
**Faculty Rep.:** Nick Zeppos  
**Nickname:** Commodores  
**Colors:** Black and Gold  
**Facility (Capacity):** Memorial Gym (14,316)  
**Conference:** Southeastern (East)



South Carolina's Tre' Kelley sprints past Tennessee's Chris Lofton on the way to an 81-64 Gamecock win in Columbia on Feb. 17, 2007. Kelley scored a game-high 25 points in the victory.

- SEASON
- TEAM
- STAFF
- RIVALS
- REVIEW
- RECORDS
- HISTORY

**100 YEARS FACT:** No player has ever led the Gamecocks four straight years in scoring, but 13 have led USC three straight years in scoring, including the last - Carlos Powell (2003-05).

# 2008 SEC Tournament



## 2008 SEC TOURNAMENT

Georgia Dome  
Atlanta, Ga.

March 13-16, 2008



### 2008 SEC MEN'S BASKETBALL TOURNAMENT

March 13-16 • Georgia Dome • Atlanta, Ga.

Thursday, March 13

Friday, March 14

Saturday, March 15

Sunday, March 16

#### EASTERN #5

Game 1 1:00 p.m. [LFS]

#### WESTERN #4

Game 5 1:00 p.m. [LFS]

#### EASTERN #1

#### WESTERN #6

Game 2 3:15 p.m. [LFS]

Game 9 1:00 p.m. [LFS]

#### EASTERN #3

Game 6 3:15 p.m. [LFS]

#### WESTERN #2

#### WESTERN #5

Game 3 7:30 p.m. [LFS]

#### EASTERN #4

Game 7 7:30 p.m. [LFS]

#### WESTERN #1

#### EASTERN #6

Game 4 9:45 p.m. [LFS]

Game 10 3:15 p.m. [LFS]

#### WESTERN #3

Game 8 9:45 p.m. [LFS]

#### EASTERN #2

CHAMPIONSHIP  
Game 11  
1:00 p.m. [CBS]

SEC Tournament Champion  
NCAA Tournament Automatic Qualifier



**ALL TIMES EASTERN**

- SEASON
- TEAM
- STAFF
- RIVALS**
- REVIEW
- RECORDS
- HISTORY