



# GAMECOCK

## VOLLEYBALL

52 SEASONS // 5 ALL-AMERICANS // 26 ALL-REGION // 47 ALL-CONFERENCE // 5 SOUTH CAROLINA HALL OF FAME MEMBERS  
11 NCAA TOURNAMENT APPEARANCES: 1984, 1995, 1997, 1998, 2000, 2001, 2002, 2018, 2019, 2021, 2024

## OPPONENTS



### OKLAHOMA SOONERS (11-3, 3-1 SEC)

Friday, Oct. 10, 8:00 PM (ET)  
McCasland Field House  
Norman, Okla.

#### ALL-TIME SERIES

South Carolina leads 4-2

#### LAST MEETING

Gamecocks won, 3-1, at home  
(10/20/24)

The Gamecocks rallied back from  
an opening set loss to defeat Okla-  
homa in four - holding the Sooners  
to less than 20 points in sets 2 and 3.



### ARKANSAS RAZORBACKS (5-10, 1-3 SEC)

Sunday, Oct. 12, 4:00 PM (ET)  
Barnhill Arena  
Fayetteville, Ark.

#### ALL-TIME SERIES

Arkansas leads 34-14

#### LAST MEETING

Gamecocks lost, 0-3, at Arkan-  
sas (11/8/24)

South Carolina was held to a season  
low .073 hitting percentage with 25  
kills in Fayetteville. They clawed back  
for the 3rd set, only falling 25-23.

## SCHEDULE

DATE	OPPONENT	RESULT/TIME
AUG. 29	ETSU	W, 3-0
AUG. 30	CAMPBELL	W, 3-0
AUG. 31	CLEMSON	L, 2-3
Sept. 3	at Coastal Carolina	W, 3-0
Sept. 6	vs. Florida State	L, 0-3
Sept. 7	at South Florida	L, 1-3
Sept. 10	at N.C. State	L, 1-3
SEPT. 12	NORTH CAROLINA	W, 3-2
SEPT. 15	WOFFORD	W, 3-1
SEPT. 19	USC UPSTATE	W, 3-0
Sept. 24	at Kentucky*	L, 0-3
Sept. 26	at Tennessee*	L, 0-3
OCT. 1	TEXAS A&M*	L, 1-3
OCT. 5	GEORGIA*	L, 1-3
Oct. 10	at Oklahoma*	8:00 PM
Oct. 12	at Arkansas*	4:00 PM
OCT. 17	MISSISSIPPI STATE*	7:00 PM
OCT. 19	ALABAMA*	1:00 PM
Oct. 24	at Missouri*	8:00 PM
Oct. 26	at Vanderbilt*	2:00 PM
OCT. 29	AUBURN*	7:00 PM
NOV. 2	FLORIDA*	1:00 PM
NOV. 7	LSU*	7:00 PM
NOV. 12	OLE MISS*	7:00 PM
Nov. 16	at Texas*	2:00 PM
Nov. 21-25	SEC Tournament (Savannah, Ga.)	

All times Eastern (dates and times subject to change) / Home matches **BOLD** / \*-SEC

## TABLE OF CONTENTS

- |   |   |
|---|---|
| ✓ Quick Facts, Notes (pgs. 1-5)           | ✓ Season Stats, Match Highs (pgs. 9-13) |
| ✓ Around the SEC, Stat Rankings (pg. 6)   | ✓ Record Book (pgs. 14-19)              |
| ✓ The Last Time... (pg. 7)                | ✓ Rumely Noble Bio (pgs. 20-21)         |
| ✓ Match-by-Match Starters/Leaders (pg. 8) | ✓ TV Roster/Superlatives (pgs. 22-23)   |

## ROSTER

#	NAME	HT.	POS.	YR.	EXP.	HOMETOWN / PREVIOUS SCHOOL
0	Victoria Harris	5-4	DS/Libero	So.	1L	Columbia, S.C. / Cardinal Newman
1	Phoebe Reyes	6-1	Outside	Jr.	JC	San Francisco de Macoris, D.R. / Barton CC
2	Victoria Hill	5-11	Outside	Fr.	HS	Oviedo, Fla. / Trinity Prep
4	Laiya Ebo	6-1	Opposite	Jr.	TR	Washington, D.C. / Butler
5	Sydney Davis	6-0	Middle	Fr.	HS	Orlando, Fla. / Timber Creek
6	Sydney Floyd	5-9	Setter	Jr.	2L	Manhattan Beach, Calif. / Vistamar
7	Lina Merz	6-2	Opposite	Fr.	HS	Dresden, Germany / Sportgymnasium Dresden
8	Anne Bradley Bing	5-8	DS/Libero	Fr.	HS	Gastonia, N.C. / Gaston Day School
9	Ava Leahy	6-1	Middle	Jr.	TR	Charlotte, N.C. / App State
10	Sarah Jordan	6-0	Setter	Sr.	1L	Leesburg, Va. / Towson
12	Claire Payne	6-1	Middle	Fr.	HS	Wakarusa, Ind. / NorthWood
13	Alayna Johnson	6-1	Outside	Sr.	3L	Kershaw, S.C. / North Central
14	Kaia Pixler	6-0	Setter	Fr.	HS	Phoenix, Ariz. / Sunnyslope
15	Nia Hall	5-10	Outside	Jr.	TR	Lorain, Ohio / Cleveland State
17	Emily Beeker	6-5	Middle	R-Sr.	TR	Hendersonville, N.C. / Tennessee
19	Elizabeth McElveen	5-7	DS/Libero	Jr.	2L	Rock Hill, S.C. / Northwestern
23	Elise Marchal	6-1	Opposite	So.	TR	Kings Mill, Ohio / App State
24	Kimmie Thompson	5-11	Setter	Sr.	3L	Simpsonville, S.C. / St. Joseph's Catholic

## STAFF

**Head Coach**.....Sarah Rumely Noble  
**Alma Mater**.....Kentucky, 2010  
**Overall Record (Years)**.....50-35 (4)  
**Record at South Carolina (Years)**.....0-0 (1)  
**Assistant Coach**.....Connor Zimmick  
**Alma Mater**.....Wisconsin, 2018  
**Year at South Carolina**.....1st  
**Assistant Coach**.....Chanelle Hargreaves  
**Alma Mater**.....Florida, 2020  
**Year at South Carolina**.....1st  
**Assistant Coach**.....Christian Rupert  
**Alma Mater**.....BYU, 2018  
**Year at South Carolina**.....1st  
**Head Athletic Trainer**.....Jenn Herod  
**Strength and Conditioning**.....Katelyn Woolfolk  
**Director of Operations and**  
**Technical Coordinator**.....Jessica O'Brien  
**Team Nutritionist**.....Jeremy Ford  
**Communications Director**.....Sammie Grant

## PRONUNCIATION GUIDE

LAIYA EBO.....	Lay-uh E-Boh
ALAYNA Johnson.....	Ah-Lay-Nuh
NIA Hall.....	Nee-uh
Ava LEAHY.....	Lay-Hee
Elise MARCHAL.....	Like Marshall
Elizabeth MCELVEEN.....	Mac-UL-veen
LINA MERZ.....	LEE-NAH MERS
KAIA Pixler.....	Ky-ah
Sarah RUMELY Noble.....	Rum-lee

## QUICK FACTS

Location.....	Columbia, S.C.
Founded.....	1801
Enrollment.....	36,200
Colors.....	Garnet (PMS 202C) & Black
Nickname.....	Gamecocks
Conference.....	Southeastern (SEC)
President.....	Michael Amiridis
Athletics Director.....	Jeremiah Donati
Home Court.....	Carolina VB Center (Seats 1400)
2024 Record.....	16-12
2024 Conference Finish.....	7-9 (9th)
Starters Returning/Lost.....	2 + Libero / 4
Letterwinners Returning/Lost.....	6 / 10
Newcomers.....	12

## MEDIA INFORMATION

Assistant Director / VB Contact.....	Sammie Grant
Office Phone.....	(803) 777-5539
Email.....	Grantsi@email.sc.edu
Personal Phone.....	(301)-628-8917
Department Website.....	GamecocksOnline.com
Mailing Address.....	Rice Athletics Center 1304 Heyward Street, Columbia, S.C. 29208

## LOGOS/ABBREVIATIONS

When abbreviating South Carolina for scoreboard or broadcasts, the preferred abbreviation is either SC or USC. Please refrain from using SCAR or S. Carolina. Correct logos and wordmarks can be emailed upon request.

## SOCIAL MEDIA



Twitter.....	@GamecockVolley
Instagram.....	@GamecockVB
Facebook.....	/GamecockVolleyball

## NOTEWORTHY

## SCOUTING THE SOONERS

Oklahoma is riding on a two-game win streak, entering Fridays match after upsetting then-No. 21 Missouri 3-2 on the road. Alexis Shelton leads the offense with 196 (3.56 per set) kills this season. The senior recently picked up her second SEC weekly honor of the season on Monday as she was named Co-Offensive Player of the Week after leading the Sooners to the victory against Missouri with a season-high 25 kills (which ranks fifth in the SEC) and .564 hitting percentage (which ranks fourth in the SEC). Avaya Maga leads in assists with 329 (5.98 per set) and Emoni Bush leads in aces with 21 on the season. On the defensive side, Dionii Fraga has dished out 158 digs this season (2.87 per set) and KJ Burgess has 67 blocks (1.22 per set).

## BY THE NUMBERS

GAMECOCKS	NCAA RANK	CATEGORY	SOONERS	NCAA RANK
.215	158th	Hitting Percentage	.262	39th
.234	279th	Opponent Hitting Percentage	.206	175th
12.81	138th	Kills Per Set	13.31	69th
13.36	214th	Digs Per Set	10.71	341st
1.96	208th	Blocks Per Set	2.49	53rd
1.43	210th	Aces Per Set	1.75	66th

## SCOUTING THE RAZORBACKS

The Razorbacks picked up their first SEC win in the conference opener against Ole Miss in a 3-2 victory two weeks ago before going on a three-game losing streak, most recently falling 3-0 to Vanderbilt on the road. Parker Duncan is Arkansas' current top kill leader with 218 on the season (3.96 per set). Kiki Remensperger is one of the top setters in the conference, ranking third for total assists at 577 and fifth for assists per set at 9.62. She has four marks that rank in the top 10 in the SEC for number of assists in five set matches with her highest tab coming at No. 3 with 57 assists against Arkansas. Remensperger also leads the team in aces and digs, tallying 15 and 156 thus far, respectively. Journey Peppers has the highest number of blocks on the team this season with 54, averaging .90 per set.

## BY THE NUMBERS

GAMECOCKS	NCAA RANK	CATEGORY	RAZORBACKS	NCAA RANK
.215	158th	Hitting Percentage	.215	157th
.234	279th	Opponent Hitting Percentage	.234	280th
12.81	138th	Kills Per Set	12.30	196th
13.36	214th	Digs Per Set	13.27	224th
1.96	208th	Blocks Per Set	1.92	220th
1.43	210th	Aces Per Set	1.07	325th

## WEEK SIX NOTABLES

- The Gamecocks look to pick up their first conference win of the season as they are currently 0-4 in SEC play after facing two opponents on the road and two at home
- South Carolina hosted No. 9 Texas A&M for its SEC home opener last week and picked up a set win in the 3-1 loss to the Aggies
- The Gamecocks fought down to the wire against the Aggies in the first set, pushing the score into extra points where it ultimately ended with Texas A&M edging out South Carolina 31-29. Throughout the set there were six lead changes and 14 tied scores
- South Carolina carried the momentum into the second set and strung together a 25-20 win, which marked the team's second time defeating a ranked opponent in the second set this season. The Gamecocks battled in the third set, only falling 25-21, but trailed off in the final set 25-13
- Two Gamecocks set new career highs – Emily Beeker with nine blocks and Kaia Pixler with 20 digs. Victoria Harris had her fourth match of the season in the 20s for digs and seventh consecutive game in double digits at 22. Nia Hall led the offense with 16 kills
- The Garnet & Black rounded out the week against Georgia in a close match where the Gamecocks offense led the charge, out-killing the Bulldogs 50-46 and featuring three players in double-digit kills
- The game was evenly played with both teams finishing with the same number of digs and no more than a two-point difference in aces, blocks, total points and errors
- Similar to the match against the Aggies, the Gamecocks won the second set in a comfortable 25-12 victory. Each of the remaining sets were decided by four points or fewer
- Alayna Johnson led the offense with 16 kills, matching her season high and marking her ninth game of the season with double digits. For the second match of the week another Gamecock, Ava Leahy, had nine blocks which tied her career high

## STAT LEADERS

CATEGORY	PLAYER	VALUE
Kills	Nia Hall	177
Assists	Sarah Jordan	257
Aces	Alayna Johnson	17
Digs	Victoria Harris	205
Blocks	Emily Beeker	56

## NOTEWORTHY

### YA DIG?

Sophomore Victoria Harris is already at 205 digs this season, averaging 3.87 per set. She ranks third in the conference for total digs and seventh for digs per set. Harris has put up the highest amount of digs at every match this season, reaching a season high of 24 against NC State - only three off of her career high. She hit in the 20s three additional times this season, dishing out 22 against UNC and Texas A&M, and 20 against Wofford. For seven consecutive matches, she has reached double digit digs. The Columbia, S.C. native surpassed the 600 dig milestone last week, and currently has 601 so far in her collegiate career. Three other Gamecocks, Victoria Hill (91), Alayna Johnson (77) and Sarah Jordan (74) have tallied 60 or more digs on the season.

### LAST ONE BEST ONE

Senior Alayna Johnson has carried the momentum from her strong junior campaign into this season, emerging as one of the Gamecocks' top offensive threats. She started the season on a high note against Coastal Carolina with a new career high seven aces in the team's win — a mark that ranks second in program history, and she currently leads the team with 12 aces this season. Johnson has recorded double-digit kills in eight matches, highlighted by a season-high 16 at USF, just one shy of her career best. She matched that mark at the last mark against Georgia. For four matches she has been the team's top kill leader. Johnson also posted a career-best .571 hitting percentage against Coastal Carolina, a mark that currently leads the team and has hit .500 or better three total times this season.

### NEWBIE BREAKOUT PERFORMANCES

Junior transfer Laiya Ebo and freshman Kaia Pixler have only played seven and five games, respectively, but have already made a big impact on the team. Ebo has improved her stats everytime she has hit the court - first reaching a season high of three kills at Tennessee before setting a new high of 12 against Georgia - hitting .526 which is the second highest mark on the team this season and ranks ninth in the SEC for four set hitting percentages. Kaia Pixler has followed in a similar fashion, improving her collegiate career highs everytime she enters a match. Against Tennessee she reached a season high four assists before having 20 against Texas A&M and the 23 against Georgia, leading the team in both matches. She had eight digs against the Aggies, also a collegiate career high.

### IN THE RANKINGS

The Gamecocks have tabs all over the SEC top 10 rankings in several different categories. Johnson has etched her name in three different spots - ranking third for attack percentage in five set matches (.571), second for aces (7) and first for five set aces (7). Ava Leahy and Emily Beeker are tied for fifth in four set blocks, both with career highs of nine. Victoria Harris has two marks in four set digs, sitting at fourth with 24 and seventh with 22. In five set digs she ranks sixth with 22. Nia Hall ranks 10th for five set kills with 23.

### DEPTH ON DISPLAY

In eight of South Carolina's ten matches this season, at least two Gamecocks have recorded double-digit kills. The team's most balanced effort came against Coastal Carolina, where four players — Nia Hall (17), Victoria Hill (17), Alayna Johnson (12), and Elise Marchal (10) — each reached double figures. Hall and Johnson have led the way, posting double-digit kills in 10 and eight matches, respectively. In nine matches this season, at least two Gamecocks recorded doubledigit assists and during two matches there were two Gamecocks who reached 20 or more digs; the Coastal match which was led by Kimmie Thompson (28) and Sydney Floyd (22) and the Georgia match, led by Kaia Pixler (23) and Sarah Jordan (20).

### DOUBLE TROUBLE

Victoria Hill and Nia Hall were the first Gamecocks of the season to record double-double stats, reaching double digits in kills and digs during the five set Clemson match (8/21/25). Hill recorded 18 kills and 14 digs while Hall notched 23 kills and 14 digs. Hill had her second double-double of the season at the Coastal Carolina match (9/3/25), notching 17 kills and 10 digs. Hall had her

second double-double against NC State, tallying 14 kills and 10 digs. Against Wofford, three more Gamecocks joined this season's double-double club. Victoria Harris added 12 assists to her 20 digs, Sarah Jordan had 21 assists and 10 digs and Alayna Johnson recorded 15 kills and 16 digs.

### NO FLY ZONE

The Gamecocks have had five matches with 10 or more total blocks this season. Against NC State, South Carolina put up a then-season high 10 blocks with five different Gamecocks getting two or more apiece - led by Emily Beeker with seven and Elise Marchal with four. The Gamecocks raised the bar once more against UNC, setting a new season high of 16 total team blocks, led by the trio of Beeker, Marchal and Ava Leahy who each had seven or more blocks. Against USC Upstate the team had third highest amount of blocks this season, tallying 11 again led by Beeker with seven. Most recently against Georgia, the Garnet & Black reached their second highest amount of the season with 12 led by Leahy with nine and Marchal with six. Beeker and Ebo had three apiece. Beeker leads the team with 56 total blocks this season while Marchal follows with 39. With a value of 1.08 block per set, Beeker ranks 17th in the SEC which is a four spot improvement from last week.

### STADIUM PULSE

Of the six home matches this season, South Carolina has broken the attendance record at the Carolina Volleyball Center three times. The record was first broken against Clemson, where 3405 fans scanned in. It was then rebroken against UNC with 3419 fans before being broken for a third time against Wofford with 4344 fans checking in. At the other three matches the attendance has been at least 2165. This atmosphere and home court advantage is proven in the stats as the Gamecocks are 5-1 at home. At CVC South Carolina also has the best hitting percentage (.242), most kills per set (12.90), most blocks per set (2.29) and holds opponents to the lowest hitting percentage (.187).

### NEW ERA, NEW FACES

Head coach Sarah Rumley Noble's 2025 squad features plenty of new faces, with 12 players not on last year's roster. This group includes six freshmen, one sophomore, four juniors, and one senior. Two of the newcomers, junior Laiya Ebo and senior Emily Beeker, joined the Gamecocks in the spring semester, giving them a head start in adjusting to the program and building chemistry with returners.

### ROOKIE FILES

#### APP TO COLA PIPELINE

Along with assistant coaches Connor Zimmick and Chanelle Hargreaves, head coach Noble also brought over two transfers, Ava Leahy and Elise Marchal, from Appalachian State. Freshmen Claire Payne and Victoria Hill were also committed to her previous program before deciding to join her in Columbia.

### ROOKIE ROLE CALL

Six true freshmen are part of the Gamecock lineup this season.

- Victoria Hill (Oviedo, Fla. - Outside Hitter) is a three-time Florida Girls Private School Athlete of the Year and three-time Varsity Volleyball Servant Leadership Award (MPV) recipient. She played club for Gamepoint 18 Rox, helping the team to a 2020 AAU Nationals title and runner-up finish in 2021. Additionally, she was named an AAU All-American in 2020 and 2021.
- Sydney Davis (Orlando, Fla. - Middle) played club for Gamepoint Volleyball, helping the team to a second place finish at 2021 AAU Nationals. She was named to the 2023 Junior Volleyball Association's World Challenge All-Tournament Team, a 2024 Triple Crown Tournament Show Stopper and 2024 USA Volleyball Nationals Supernova. During her senior season at Timber Creek high school she hit .474 and tallied 211 kills. In 2021 she set the record for blocks in a season, and she was named a Florida Athletic Coaches Association all-state honoree in 2024.
- Lina Merz (Dresden, Germany - Right Side Hitter) played club for VC Olympia Dresden, helping the team win the national U20 championship



## NOTEWORTHY

and Vice-Champion at the U18 level in 2022. During her last season the team finished third at the German U20 National Championship.

- Anne Bradley Bing (Gastonia, N.C. - DS/Libero) was a key contributor at her high school, finishing as one of the most well-rounded players in Gaston Day School's volleyball program history. She held the school records for career digs, single-season kills and single-season assists. Her senior year, she led the team to the North Carolina 2A state championship, marking the second state title of her career. On the club side, she played for Stars Volleyball Club, which were two-time Mideast Qualifier Champions and two-time Southern Exposure tournament champions.
- Claire Payne (Wakarusa, Ind. - Middle) was named an AVCA All-Region and Indiana High School Volleyball Coaches Association (IHSVCA) All-Region Honoree for her performances during her career at NorthWood High School. Her senior year, she made the IHSVCA 1st team All-State and was an IHSCVA North All-Star. Payne finished her career with 1,321 kills, 373 blocks and a hitting percentage of .396. She competed for Northern Indiana Volleyball Association (NIVA) club team, helping it to an AAU 18U Patriot Division National Championship in 2024 and a top five finish at USA Volleyball's 18s Junior National Championship this past April, earning her a spot on the all-tournament team.
- Kaia Pixler (Phoenix, Ariz. - Setter) played club for Arizona Storm Elite VBC which won five USA Volleyball nationals titles in a six-year span (13s, 14s, 16s, 17s and 18s). She helped lead her team to the open division title at USA Volleyball's 18s Junior Nationals, making the division's All-Tournament team in the process. Pixler also finished her career at Sunnyslope High School as a four-year varsity letterwinner, going over 2,500 assists and 100 service aces in addition to several major statistical milestones.

### ALL-AROUND ATHLETES

Two of the freshmen, Victoria Hill and Claire Payne, were multi-sport athletes in high school. Hill competed on the track & field team, recording three gold medal finishes at the 2024 and 2025 Florida State Track Championships. She earned the triple jump title in 2024 and the long and high jump titles in 2025. Payne was also a standout in high school track & field, holding the program record in the high jump and qualifying for the state meet twice in the event. In addition, she played basketball, leading her team last season in points, rebounds, and blocks. Hill and Payne's skills on the field and court are expected to translate to their first collegiate volleyball season.

### RETURNER FILES

#### BACKLINE BOSSES

Columbia native Victoria Harris had a standout freshman season, establishing herself as one of the Gamecocks' top returners for 2025. She anchored the back line of the defense, helping South Carolina reduce total service reception errors from 166 to 114. Harris led the team with 396 digs, averaging 4.04 per set—nearly two more than the next-highest teammate—and ranked sixth in the SEC and 14th nationally among Division I freshmen. She recorded four 20-dig matches, including a season-high 27 against LSU, the most by a freshman in a single game in the rally-scoring era, earning her SEC Freshman of the Week honors on Nov. 18. Following the season, Harris was named to the 2024 SEC All-Freshman team, becoming the ninth Gamecock in program history to earn the honor and the first since 2021. Despite being an underclassman, the sophomore looks to take on a leadership role this season.

Elizabeth McElveen, the other returning libero, developed into a key defensive presence last season. She recorded three double-digit dig matches, including a career-high 17 against Duke. In the Wake Forest match, McElveen tallied a career-best four service aces, all in the first set, and finished the season with 22 aces, the third-most on the team. This season, she brings valuable veteran experience and the ability to contribute critical points with her serve when it matters most.

#### JORDAN YEAR

After transferring from Towson two years ago, Sarah Jordan made an immediate impact in her first season as a Gamecock, becoming a key contributor to the offense. She returns for her senior year as the team's top setter, having led last season with 951 assists. Her 9.91 assists per set ranked eighth in the SEC and marked the eighth-highest single-season total in program

history's rally-scoring era. Jordan also reached the 2,000-career-assist milestone during the Ole Miss match and set the program record for assists in a single game with 66 in a win at LSU. She finished the season with 10 double-doubles, cementing her role as a cornerstone of the Gamecock offense.

### MIDDLE MAKEOVER

Both of South Carolina's primary middles this season—Emily Beeker and Ava Leahy—are newcomers to the program. Beeker, an SEC transfer from Tennessee, played four seasons with the Vols and appeared in 43 sets last year, posting 60 kills on a .396 hitting percentage. She earned SEC Co-Defensive Player of the Week honors as a junior. Leahy arrives from Appalachian State, where she spent two seasons under coach Noble. She played in 52 matches, recording 365 kills (1.87 per set) with a .243 hitting percentage. As a sophomore, she logged double-digit kills in 11 matches, highlighted by a career-high 22 last November, and capped her tenure at App by earning second-team All-Sun Belt Conference recognition. Freshman Claire Payne is also expected to contribute at the net this season.

### PIN POINT PLAYERS

The Gamecock offense takes a hit this year with the graduation of top kill leader Riley Whitesides, who closed her senior season with 438 kills. To fill that void, South Carolina will look to Alayna Johnson, last year's No. 2 in kills. Johnson is coming off a breakout season in which she set career highs across the board earning 236 kills, 18 assists, 23 aces, 148 digs, and 269.5 points. She posted 16 kills in just three sets at Texas, narrowly missing her career high, and capped the year by reaching the 500-career-kill milestone in the regular-season finale.

Elise Marchal is a key addition to the Gamecock offense after a standout freshman season at Appalachian State where she was named Sun Belt Freshman of the Year and earned Second-Team All-SBC honors. Marchal finished with 245 kills (2.19 per set) on a .254 hitting percentage, along with 288 digs (2.57 per set) and 75 total blocks. She recorded double-digit kills in 11 matches and helped the Mountaineers reach their first NIVC Tournament since 2019, where she contributed 11 kills, three blocks, and two aces in the opening round.

Nia Hall rounds out the group of veteran outside hitters, joining the Gamecocks after two seasons at Cleveland State. She appeared in 58 matches for the Vikings and finished second on the team in kills in 2024. Hall played a key role in leading Cleveland State to a Horizon League championship and its first NCAA Tournament appearance since 2017. She earned First-Team All-Horizon League honors last season and closed her time with the Vikings with 550 kills, 185 digs, and 111 blocks. Hall wasted no time making an impact, finishing preseason as the team's kill leader.

## SPLITTING HAIRS: 2025 BY THE NUMBERS

HOME		NON-CONFERENCE	
Kills Per Set.....	12.90	Kills Per Set.....	13.00
Hit Percentage.....	0.242	Hit Percentage.....	0.238
Opponent Hit Pctg.....	0.187	Opponent Hit Pctg.....	0.225
Digs Per Set.....	13.58	Digs Per Set.....	13.54
Blocks Per Set.....	2.29	Blocks Per Set.....	1.85
Aces Per Set.....	1.32	Aces Per Set.....	1.54
Games vs Ranked Opponent.....	2	Games vs Ranked Opponent.....	1
AWAY		CONFERENCE	
Kills Per Set.....	12.79	Kills Per Set.....	12.29
Hit Percentage.....	0.197	Hit Percentage.....	0.156
Opponent Hit Pctg.....	0.294	Opponent Hit Pctg.....	0.257
Digs Per Set.....	12.89	Digs Per Set.....	12.86
Blocks Per Set.....	1.58	Blocks Per Set.....	2.29
Aces Per Set.....	1.68	Aces Per Set.....	1.14
Games vs Ranked Opponent.....	2	Games vs Ranked Opponent.....	3

## AROUND THE SOUTHEASTERN CONFERENCE


**2025-26 SEC Women's Volleyball  
Conference Standings  
All games**

 Page 1/1  
as of Oct 05, 2025

Team	Conf	Pct.	Overall	Pct.	Home	Away	Neut.	Last-10	Streak
Texas	4-0	1.000	12-0	1.000	6-0	4-0	2-0	10-0	W 12
Texas A&M	4-0	1.000	12-2	.857	5-0	5-2	2-0	8-2	W 7
Tennessee	3-0	1.000	12-1	.923	9-0	2-0	1-1	10-0	W 11
Kentucky	3-0	1.000	10-2	.833	5-0	4-0	1-2	9-1	W 7
Auburn	3-1	.750	12-3	.800	6-0	2-3	4-0	8-2	W 1
Oklahoma	3-1	.750	11-3	.786	5-1	3-1	3-1	8-2	W 2
Mississippi St.	2-2	.500	12-2	.857	6-1	3-1	3-0	8-2	L 1
LSU	2-2	.500	9-6	.600	3-3	3-3	3-0	6-4	W 1
Florida	2-2	.500	7-6	.538	4-1	2-4	1-1	5-5	L 1
Georgia	1-3	.250	9-5	.643	5-2	3-3	1-0	5-5	W 1
Missouri	1-3	.250	9-6	.600	1-2	3-4	5-0	6-4	L 1
Ole Miss	1-3	.250	9-6	.600	2-2	2-4	5-0	6-4	L 2
Vanderbilt	1-3	.250	5-8	.385	3-2	2-4	0-2	4-6	W 1
Arkansas	1-3	.250	5-10	.333	3-5	0-4	2-1	4-6	L 3
Alabama	0-4	.000	8-6	.571	5-2	2-3	1-1	4-6	L 5
South Carolina	0-4	.000	6-8	.429	5-3	1-4	0-1	3-7	L 4

## 2025 RECORD BREAKDOWN

Overall.....	6-8	Losing set two.....	1-4	Fewer aces than opponent.....	1-5
Conference.....	0-4	Winning set three.....	5-0	Aces equal.....	0-0
vs. Ranked Teams.....	1-3	Losing set three.....	2-5	More service errors than opponent.....	2-6
Home.....	5-3	Winning set four.....	2-0	Fewer service errors than opponent.....	3-3
Away.....	1-4	Losing set four.....	2-3	Service errors equal.....	2-1
Neutral.....	0-1	Three-set matches.....	3-3	More digs than opponent.....	7-1
August.....	2-1	Four-set matches.....	1-4	Fewer digs than opponent.....	0-6
September.....	4-5	Five-set matches.....	2-1	Digs equal.....	0-1
October.....	0-2	More kills than opponent.....	6-2	More total blocks than opponent.....	3-2
November.....	0-0	Fewer kills than opponent.....	0-6	Fewer total blocks than opponent.....	3-7
December.....	0-0	Kills equal.....	0-0	Total blocks equal.....	0-1
Mondays.....	1-0	More hitting errors than opponent.....	3-7	Wearing Garnet.....	0-4
Tuesdays.....	0-0	Fewer hitting errors than opponent.....	4-1	Wearing Black.....	2-2
Wednesdays.....	1-3	Hitting errors equal.....	1-0	Wearing White.....	4-3
Thursdays.....	0-0	More attacks than opponent.....	3-4		
Fridays.....	3-1	Fewer attacks than opponent.....	2-4		
Saturdays.....	1-1	Attacks equal.....	0-1		
Sundays.....	0-3	Higher hitting % than opponent.....	5-1		
Winning set one.....	5-2	Lower hitting % than opponent.....	1-7		
Losing set one.....	1-5	Hitting % equal.....	0-0		
Winning set two.....	4-2	More aces than opponent.....	6-5		

## SEC/NCAA STATISTICAL RANKINGS (2025)

NCAA Team Rankings			NCAA Top-150 Individual Rankings				SEC-Only Team Rankings			
Category	Figure	Rank	Stat	Athlete	Figure	Rank	Category	Figure	Rank	
Hit Percentage	0.215	158	Kills/Set	-	-	-	Hit Percentage	0.215	12	
Opponent Hit Pct.	0.234	279	Hit Pct.	-	-	-	Opponent Hit Pct.	0.234	14	
Kills/Set	12.81	138	Assists/Set	-	-	-	Kills/Set	12.81	12	
Blocks/Set	1.96	208	Blocks/Set	-	-	-	Blocks/Set	1.96	14	
Service Aces/Set	1.43	210	Aces/Set	-	-	-	Service Aces/Set	1.43	8	
Digs/Set	13.36	214	Digs/Set	Victoria Harris	3.87	128	Digs/Set	13.36	10	
			Points/Set	-	-	-				
SEC Team Rankings			SEC Individual Top-10 Rankings				SEC-Only Individual Rankings			
Category	Figure	Rank	Stat	Athlete	Figure	Rank	Stat	Athlete	Figure	Rank
Hit Percentage	0.215	12	Kills/Set	-	-	-	Kills/Set	-	-	-
Opponent Hit Pct.	0.234	14	Hit Pct.	-	-	-	Hit Pct.	-	-	-
Kills/Set	12.81	12	Assists/Set	-	-	-	Assists/Set	-	-	-
Blocks/Set	1.96	14	Blocks/Set	-	-	-	Blocks/Set	Emily Beeker	1.08	17
Service Aces/Set	1.43	8	Aces/Set	-	-	-	Aces/Set	-	-	-
Digs/Set	13.36	10	Digs/Set	Victoria Harris	3.87	7	Digs/Set	Victoria Harris	3.87	7
			Points/Set	-	-	-	Points/Set	-	-	-

## THE LAST TIME THE TEAM...

Lost the first game in a win  
Lost the first 2 games in a win  
Down 2-1 in a win  
Won the first set in a loss  
Won the first two sets in a loss  
Was up 2-1 in a loss

Beat a ranked opponent  
Beat a ranked opponent in a true road game  
Beat a ranked opponent at a neutral site  
Beat a top-10 opponent

Started a season 10-0  
Was ranked in the top-25

Opponent scored < 40 points in a match\*  
Fewest points allowed in a match\*  
Opponent scored < 10 points in a set\*  
Fewest points allowed in a set\*  
Opponent scored < 15 points in a set\*

\* In a standard 25-point game, best-of-five match

## KILLS/ATTACKS

75 or more kills

85 or more kills

95 or more kills

200 or more attacks

225 or more attacks

Had less than 20 kills

Opponent had less than 20 kills

Out-killed and won

Out-killed opponent and lost

80+ digs

90+ digs

100+ digs

## DIGS

Sept. 12, 2025 (vs. UNC)  
Sept. 8, 2023 (Cincinnati)  
Nov. 13, 2024 (at LSU)  
Nov. 12, 2023 (LSU)  
Oct. 20, 2021 (LSU)  
Nov. 12, 2023 (LSU)

Sept. 12, 2025 (#25 UNC, 3-2)  
Oct. 13, 2024 (#19 Florida, 3-0)  
Previous: Sept. 14, 2003 (#14 Notre Dame, 3-1)  
Dec. 6, 2019 (#10 Colorado State, 3-2)  
Nov. 25, 2023 (#8 Tennessee, 3-0)

2016 (12-0)  
Sept. 6, 2021

Sept. 19, 2025 (USC Upstate, 35)  
Nov. 23, 2008 (vs. Mississippi State, 32)  
Sept. 17, 2024 (East Carolina, 9)  
Sept. 13, 2024 (FIU, 7)  
Nov. 3, 2024 (Tennessee, 12)

Nov. 13, 2024 (at LSU)  
Previous: Nov. 11, 2007 (Tennessee, 82)  
Nov. 2, 2007 (Arkansas, 85)  
Nov. 7, 1986 (North Carolina State, 99)  
Nov. 13, 2010 (Mississippi St., 220)  
Nov. 11, 2007 (Tennessee, 241)  
Sept. 22, 2023 (at Arkansas, 18)  
Aug. 30, 2013 (S.C. State, 16)  
Sept. 1, 2024 (Duke, 63-55)  
Nov. 12, 2023 (LSU, 70-65)

Oct. 8, 2022 (Tennessee, 86)  
Nov. 19, 2014 (Tennessee, 91)  
Sept. 10, 2011 (College of Charleston, 101)

15+ blocks  
20+ blocks  
Outblocked and won  
Outblocked opponent and lost

10+ aces  
15+ aces  
20+ aces  
Recorded 0 aces as a team  
Allowed 0 aces to an opponent  
Allowed 10 or more aces to an opponent

## BLOCKS

Sept. 8, 2023 (Cincinnati, 21.0)  
Sept. 8, 2023 (Cincinnati, 21.0)  
Oct. 27, 2024 (Auburn, 15.5-7.0)  
Nov. 1, 2024 (Kentucky, 7.0-6.0)

## SERVICE ACES

Sept. 3, 2025 (Coastal Carolina, 13)  
Sept. 18, 2003 (Santa Clara, 15)  
Sept. 6, 1991 (Jacksonville, 22)  
Nov. 24, 2024 (at Tennessee)  
Oct. 2, 2022 (Missouri)  
Nov. 1, 2024 (Kentucky, 12)

## HITTING PERCENTAGE

Hit .300 or better 10 times in a season  
Hit over .300  
Hit over .400  
Hit over .500

Hit less than .100  
Hit less than .200  
Hit less than .200 and won  
Hit less than .150 and won  
Ouhit the opponent and lost  
Was outhit and won

Opponent w/ negative total hitting %  
Opponent hit over .350  
Opponent hit over .450  
Opponent hit less than .100

2019 (10 times)  
Sept. 19, 2025 (USC Upstate, .391)  
Nov. 22, 2024 (Alabama, .418)  
Sept. 17, 2024 (East Carolina, .507)  
Previously: Nov. 23, 2008 (Mississippi State, .536)  
Sept. 6, 2025 (Florida State, .098)  
Sept. 12, 2025 (UNC, .182)  
Sept. 12, 2025 (UNC, .182)  
Nov. 7, 2004 (Arkansas, .138)  
Nov. 17, 2023 (at Georgia)  
Oct. 27, 2024 (Auburn)  
Previously: Sept. 25, 2022 (Florida)  
Sept. 21, 2013 (Presbyterian, -.011)  
Nov. 30, 2024 (Texas A&M, .355)  
Nov. 20, 2021 (Florida, .454)  
Sept. 13, 2024 (FIU, .075)

## ASSISTS

Nov. 13, 2024 (LSU, 70)  
Previously: Nov. 2, 2007 (Arkansas, 80)  
Nov. 2, 2007 (Arkansas, 80)  
Nov. 7, 1986 (North Carolina St., 95)

## THE LAST TIME A GAMECOCK HAD...

## KILLS

Five players with 10+ kills  
Three players with 15+ kills  
Two players with 20+ kills  
No player w/10+ kills  
20 or more kills  
25 or more kills

30 or more kills

Back to Back Games with 25+ kills

15+ kills and 15+ digs

20+ kills and 20+ digs

Recorded a triple-double

Three players with a double-double

Four players with a double-double

Nov. 30, 2018 (vs. Colorado)  
Nov. 18, 2018 (at LSU)  
Oct. 18, 2015 (at Tennessee)  
Sept. 19, 2025 (USC Upstate)  
Aug. 31, 2025 (Nia Hall, 23 vs. Clemson)  
Nov. 12, 2023 (Kiune Fletcher, 25 vs. LSU)  
Previous: Nov. 8, 2017 (Mikayla Shields, 29 vs. Missouri)  
Nov. 13, 2024 (Riley Whitesides, 30 at LSU)  
Previous: Sept. 6, 2013 (Juliette Thévenin, 30 at Clemson)

Nov. 8-12 (Kiune Fletcher vs. Miss. State and LSU)  
Previous: Sept. 6-7, 2013 (Juliette Thévenin vs. Clemson and Furman)  
Sept. 20, 2024 (Riley Whitesides, 18 kills, 15 digs at Clemson)  
Sept. 6, 2014 (Taylr McNeil, 22 kills, 23 digs vs. Furman)

Sept. 16, 2005 (Iris Santos, 12K, 57A, 13D vs. Houston)  
Sept. 15, 2025 (vs. Wofford)  
Oct. 1, 2022 (vs. Missouri)

## ATTACKS

50 or more attempts

60 or more attempts

70 or more attempts

Aug. 31, 2025 (Nia Hall, 54 vs. Clemson)  
Nov. 13, 2024 (Riley Whitesides, 66 at LSU)  
Previous: Nov. 18, 2018 (Mikayla Shields, 61 at LSU)  
Sept. 6, 2013 (Juliette Thévenin, 73 at Clemson)

## DIGS

Five players with 10+ digs  
Three players with 15+ digs  
Two players with 20+ digs  
No player w/10+ digs  
20 or more digs  
25 or more digs  
30 or more digs  
35 or more digs

Oct. 22, 2023 (at Auburn)  
Sept. 1, 2017 (vs. UNCW)  
Nov. 9, 2018 (at Texas A&M)  
Sept. 7, 2025 (at USF)  
Sept. 10, 2025 (Victoria Harris, 24 at NC State)  
Nov. 13, 2024 (Victoria Harris, 27 at LSU)  
Sept. 6, 2022 (Jenna Hampton, 31 at Clemson)  
Oct. 13, 2019 (Addie Bryant, 35 at Arkansas)

Box scores are only available from 1993 to the present. Limited historical records prior to 1993 were used to aid in the composition of team match records as well.

## BLOCKS

10 or more total blocks  
15 or more total blocks  
3+ solo blocks  
5+ solo blocks  
Two players with 10+ blocks

4 or more aces

5 or more aces

6+ aces

7+ aces

Two players with 4+ aces

Sept. 8, 2023 (Oby Anadi, 15 at Cincinnati)  
Sept. 8, 2023 (Oby Anadi, 15 at Cincinnati)  
Previous: Sept. 6, 1991 (Libby Ralston, 16 vs. Jacksonville)  
Sept. 27, 2024 (Ellie Ruprich, 3 vs. Mississippi State)  
Oct. 27, 2023 (Ellie Ruprich, 5 vs. Arkansas)  
Oct. 13, 2019 (Robinson 13/Shields 10 at Arkansas)

## ACES

Sept. 10, 2025 (Nia Hall, 4 vs. NC State)  
Previous: Sept. 15, 2024 (Elizabeth McElveen, 4 vs. Wake Forest)  
Sept. 13, 2024 (Alayna Johnson, 5 vs. Stetson)  
Nov. 16, 2018 (Aubrey Ezell, 6 vs. Ole Miss)  
Sept. 3, 2025 (Alayna Johnson, 7 vs. Coastal Carolina)  
Previous: Nov. 10, 2021 (Mallory Dixon, 7 at Auburn)  
9/26/2010 (Bradosky 6/Thevenin 4 vs. The Citadel)

## HITTING PERCENTAGE (Minimum 10 Kills)

.400 hitting percentage  
.500 hitting percentage  
.600 hitting percentage  
.700 hitting percentage  
.800 hitting percentage

Oct. 20, 2024 (Tireh Smith, .476 vs. Oklahoma)  
Sept. 3, 2025 (Alayna Johnson, .571 vs. Coastal Carolina)  
Nov. 27, 2023 (Kiune Fletcher, .600 vs. Tennessee)  
Sept. 17, 2024 (Oby Anadi, .714 vs. East Carolina)  
Aug. 25, 2017 (Mikayla Robinson, .846 vs. Mercer)  
Previous: Sept. 17, 1983 (Lori Rowe, .870 vs. Appalachian St.)

## HITTING PERCENTAGE (Minimum 15 Kills)

.300 hitting percentage  
.400 hitting percentage  
.500 hitting percentage  
.600 hitting percentage  
.700 hitting percentage

Nov. 13, 2024 (Riley Whitesides, .364 at LSU)  
Sept. 6, 2024 (Riley Whitesides, .424 vs. Temple)  
Aug. 26, 2022 (McKenzie Moorman, .556 vs. Sacred Heart)  
Nov. 22, 2024 (Campbell Paris, .625 at Alabama)  
March 6, 2021 (Riley Whitesides, .700 vs. Ole Miss)

## ASSISTS

50 or more assists  
60 or more assists  
2 players w/ 20+ assists  
3 players w/ 15+ assists

Nov. 12, 2021 (Claire Wilson, 55 vs. LSU)  
Nov. 13, 2024 (Sarah Jordan, 66 at LSU)  
Previous: Nov. 30, 2018 (Courtney Koehler, 60 vs. Colorado)  
Sept. 3, 2025 (Thompson 28/Floyd 22 vs. Coastal Carolina)  
Sept. 1, 2023 (Thompson 24/Floyd 20/Wilson 16 vs. Miami)

## MATCH-BY-MATCH STARTERS

DATE	OPPONENT	W/L	MB	MB/DS	LS/OH	LS/OH	RS/DS	SETTER	LIBERO
8/29	ETSU	W	Beeker	Leahy	Hill	Hall	Marchal	Jordan	Harris
8/30	Campbell	W	Beeker	Leahy	Hill	Hall	Marchal	Jordan	Harris
8/31	Clemson	L	Beeker	Leahy	Hill	Hall	Johnson	Thompson	Harris
9/3	Coastal	W	Beeker	Leahy	Hill	Hall	Johnson	Thompson	Harris
9/6	Florida State	L	Beeker	Leahy	Hill	Hall	Johnson	Thompson	Harris
9/7	USF	L	Beeker	Leahy	Marchal	Hall	Johnson	Jordan	Harris
9/10	NC State	L	Beeker	Leahy	Marchal	Hall	Johnson	Jordan	Harris
9/12	UNC	W	Beeker	Leahy	Marchal	Hill	Johnson	Thompson	Harris
9/15	Wofford	W	Beeker	Leahy	Marchal	Hill	Johnson	Thompson	Harris
9/19	USC Upstate	W	Beeker	Leahy	Hill	Hall	Johnson	Jordan	Harris
9/24	Kentucky	L	Beeker	Leahy	Hill	Johnson	Nia Hall	Jordan	Harris
9/26	Tennessee	L	Beeker	Leahy	Hill	Johnson	Hall	Jordan	Harris
10/1	Texas A&M	L	Beeker	Leahy	Hall	Johnson	Ebo	Pixler	Harris
10/5	Georgia	L	Beeker	Leahy	Hill	Johnson	Marchal	Jordan	Harris

## MATCH-BY-MATCH INDIVIDUAL LEADERS

DATE	OPPONENT	W/L	HIGH KILLS	HIGH ASSISTS	HIGH ACES	HIGH DIGS	HIGH BLOCKS
8/29	ETSU	W	Hill/Hall (11)	Thompson (18)	Thompson (1)	Harris (8)	Leahy (3)
8/30	Campbell	W	Hill (11)	Thompson (18)	Thompson (2)	Harris (8)	Hall/Beeker (3)
8/31	Clemson	L	Hall (23)	Thompson (24)	McElveen (2)	Harris (18)	Beeker (4)
9/3	Coastal	W	Hill/Hall (17)	Thompson (25)	Johnson (7)	Harris (19)	Nia Hall (2)
9/6	Florida State	L	Hall (13)	Thompson (11)	Bing/Harris/Leahy (1)	Harris (12)	Marchal (2)
9/7	USF	L	Johnson (16)	Jordan (36)	McElveen (4)	Harris (8)	Beeker (4)
9/10	NC State	L	Johnson (15)	Jordan (36)	Hall (4)	Harris (24)	Beeker (7)
9/12	UNC	W	Hall (18)	Thompson/Jordan (25)	McElveen (3)	Harris (22)	Leahy (8)
9/15	Wofford	W	Hall (16)	Jordan (21)	Marchal/Harris/Floyd/Thompson/Johnson (1)	Harris (20)	Beeker (3)
9/19	USC Upstate	W	Hall (7)	Jordan (15)	Floyd (3)	Harris (10)	Beeker (7)
9/24	Kentucky	L	Hall (15)	Jordan (18)	Thompson (2)	Harris (15)	Marchal/Beeker (3)
9/26	Tennessee	L	Johnson (10)	Jordan (21)	Hill/Johnson (2)	Harris (12)	Beeker (3)
10/1	Texas A&M	L	Hall (16)	Pixler (20)	Johnson (3)	Harris (22)	Beeker (9)
10/5	Georgia	L	Johnson (16)	Pixler (23)	Harris (3)	Harris/Johnson/Jordan (8)	Leahy (9)

## PROGRAM STREAKS AND SUPERLATIVES

Highest-Ranked Opponent Defeated.....#4 Florida (3-2, Nov. 12, 2020)	Longest Losing Streak .....Oct. 11 - Nov. 27, 1992 (13)
Highest top-25 ranking ..... 17th (Oct. 1, 2001)	Longest SEC Win Streak ..... Sept. 20 - Oct. 25, 2002 (10)
Most Matches vs. Ranked Opponents in a Season ..... 10 (2021)	Longest SEC Losing Streak ..... Oct. 4 - Nov. 15, 1991 (11)
Most SEC Matches vs. Ranked Opponents in a Season ..... 8 (2023)	Consecutive Sweep Streak ..... Sept. 17 - Sept. 30, 1983 (9)
Most Wins vs. Ranked Opponents in a Season ..... 3 (2021)	Consecutive SEC Sweep Streak ..... Oct. 25 - Nov. 15, 2019 (5)
Most Five-Set Matches in a Season ..... 9, three times (last: 2014)	Longest Win Streak - True Road ..... Oct. 15, 1983 - Sept. 22, 1984 (9)
Longest Win Streak ..... Oct. 15 - Nov. 18, 1983 (14)	Longest Win Streak - Home ..... Oct. 14, 2001 - Oct. 24, 2002 (17)



## 2025 SEASON STATISTICS



2025-26 South Carolina Women's Volleyball  
Overall Individual Statistics  
All games

Page 1/1  
as of Oct 06, 2025

## Game Records

Overall	Conference	Home	Away	Neutral
6 - 8	0 - 4	5 - 3	1 - 4	0 - 1

## Team Box Score

##	Player	SP	MP-MS	Attack					Set				Serve				
				K	K/S	E	TA	PCT	A	A/S	TA	PCT	SA	SA/S	SE	TA	PCT
0	Harris, Victoria	53	14-0	2	0.04	0	2	1.000	72	1.36	223	.323	10	0.19	12	195	.938
1	Reyes, Phoebe	7	4-0	1	0.14	1	2	.000	0	0.00	2	.000	1	0.14	3	17	.824
2	Hill, Victoria	52	14-11	118	2.27	58	328	.183	2	0.04	29	.069	11	0.21	24	153	.843
4	Ebo, Laiya	13	7-1	20	1.54	6	39	.359	1	0.08	5	.200	0	0.00	0	0	.000
6	Floyd, Sydney	20	11-0	0	0.00	0	0	.000	65	3.25	163	.399	4	0.20	7	41	.829
8	Bing, Anne	4	4-0	0	0.00	0	0	.000	0	0.00	0	.000	1	0.25	1	3	.667
9	Leahy, Ava	52	14-14	61	1.17	19	143	.294	1	0.02	11	.091	2	0.04	15	78	.808
10	Jordan, Sarah	46	13-8	4	0.09	1	8	.375	257	5.59	678	.379	0	0.00	3	30	.900
12	Payne, Claire	9	4-0	5	0.56	2	14	.214	1	0.11	4	.250	0	0.00	0	5	1.000
13	Johnson, Alayna	53	14-12	154	2.91	63	385	.236	20	0.38	60	.333	17	0.32	14	203	.931
14	Pixler, Kaia	11	5-1	0	0.00	0	0	.000	51	4.64	131	.389	1	0.09	1	29	.966
15	Hall, Nia	53	14-11	177	3.34	78	464	.213	4	0.08	29	.138	7	0.13	16	86	.814
17	Beeker, Emily	52	14-14	64	1.23	26	135	.281	2	0.04	11	.182	0	0.00	0	0	.000
19	McElveen, Elizabeth	41	13-0	1	0.02	0	1	1.000	3	0.07	16	.188	10	0.24	13	140	.907
23	Marchal, Elise	53	14-7	71	1.34	46	235	.106	3	0.06	30	.100	3	0.06	7	48	.854
24	Thompson, Kimmie	42	13-5	1	0.02	0	7	.143	159	3.79	420	.379	9	0.21	20	134	.851
<b>SOUTH CAROLINA</b>		<b>53</b>	<b>14-14</b>	<b>679</b>	<b>12.81</b>	<b>300</b>	<b>1763</b>	<b>.215</b>	<b>641</b>	<b>12.09</b>	<b>1812</b>	<b>.354</b>	<b>76</b>	<b>1.43</b>	<b>136</b>	<b>1162</b>	<b>.883</b>
<b>Opponents</b>		<b>53</b>	<b>14-14</b>	<b>649</b>	<b>12.25</b>	<b>250</b>	<b>1708</b>	<b>.234</b>	<b>610</b>	<b>11.51</b>	<b>1730</b>	<b>.353</b>	<b>54</b>	<b>1.02</b>	<b>140</b>	<b>1153</b>	<b>.879</b>

			Receptions			Dig		Blocking						Points	
##	Player	SP	RE	TA	PCT	DIG	DIG/S	BS	BA	TOTAL	BLK/S	BE	BHE	PTS	PTS/S
0	Harris, Victoria	53	9	323	.972	205	3.87	0	0	0	0.00	0	0	12.0	0.23
1	Reyes, Phoebe	7	1	1	.000	1	0.14	1	0	1	0.14	0	0	3.0	0.43
2	Hill, Victoria	52	10	182	.945	91	1.75	2	6	8	0.15	4	0	134.0	2.58
4	Ebo, Laiya	13	0	0	.000	4	0.31	0	9	9	0.69	2	0	24.5	1.88
6	Floyd, Sydney	20	0	0	.000	25	1.25	0	0	0	0.00	0	0	4.0	0.20
8	Bing, Anne	4	0	11	1.000	1	0.25	0	0	0	0.00	0	0	1.0	0.25
9	Leahy, Ava	52	0	1	1.000	22	0.42	2	35	37	0.71	9	0	82.5	1.59
10	Jordan, Sarah	46	0	4	1.000	74	1.61	0	2	2	0.04	0	0	5.0	0.11
12	Payne, Claire	9	0	0	.000	0	0.00	0	5	5	0.56	0	0	7.5	0.83
13	Johnson, Alayna	53	7	203	.966	77	1.45	1	14	15	0.28	1	0	179.0	3.38
14	Pixler, Kaia	11	0	0	.000	13	1.18	0	0	0	0.00	0	0	1.0	0.09
15	Hall, Nia	53	13	230	.943	62	1.17	0	21	21	0.40	4	1	194.5	3.67
17	Beeker, Emily	52	0	0	.000	17	0.33	6	50	56	1.08	1	1	95.0	1.83
19	McElveen, Elizabeth	41	2	16	.875	26	0.63	0	0	0	0.00	0	0	11.0	0.27
23	Marchal, Elise	53	1	31	.968	35	0.66	0	39	39	0.74	3	0	93.5	1.76
24	Thompson, Kimmie	42	0	0	.000	55	1.31	1	1	2	0.05	0	1	11.5	0.27
-	TEAM	-	11	-	-	-	-	-	-	-	-	-	-	-	-
SOUTH CAROLINA		53	54	1013	.947	708	13.36	13	182	104.0	1.96	24	3	859.0	16.21
Opponents		53	76	1026	.926	684	12.91	18	218	127.0	2.40	29	1	830.0	15.66



## INDIVIDUAL MATCH HIGHS

**HITTING PERCENTAGE (K-E-TA)** *Min. 10 Kills*

.571 (12-0-21)	Alayna Johnson	vs. Coastal (9/3/2025)
.526 (12-2-19)	Laiya Ebo	vs. Georgia (10/5/2025)
.519 (15-1-27)	Alayna Johnson	vs. Wofford (9/15/2025)
.333 (11-4-21)	Nia Hall	vs. ETSU (8/29/2025)
.323 (15-5-31)	Nia Hall	vs. Kentucky (9/24/2025)
.320 (10-2-25)	Alayna Johnson	vs. Tennessee (9/26/2025)
.296 (23-7-54)	Nia Hall	vs. Clemson (8/31/2025)
.250 (11-4-28)	Victoria Hill	vs. Campbell (8/30/2025)
.231 (18-9-39)	Nia Hall	vs. UNC (9/12/2025)
.227 (16-6-44)	Alayna Johnson	vs. USF (9/7/2025)
.211 (13-5-38)	Nia Hall	vs. FSU (9/6/2025)
.149 (14-7-47)	Nia Hall	vs. NC State (9/10/2025)
.133 (16-10-45)	Nia Hall	vs. Texas A&M (10/1/2025)

**KILLS 3-SETS (K-E-TA)**

15 (15-5-31)	Nia Hall	vs. Kentucky (9/24/2025)
13 (13-5-38)	Nia Hall	vs. Florida State (9/6/2025)
11 (11-4-21)	Nia Hall	vs. ETSU (8/29/2025)
11 (11-4-28)	Victoria Hill	vs. ETSU (8/29/2025)
11 (11-4-28)	Victoria Hill	vs. Campbell (8/30/2025)
10 (10-2-25)	Alayna Johnson	vs. Kentucky (9/26/2025)
7 (7-2-16)	Nia Hall	vs. USC Upstate (9/19/2025)

**KILLS 4-SETS (K-E-TA)**

16 (16-10-45)	Nia Hall	vs. Texas A&M (10/1/2025)
16 (16-7-40)	Alayna Johnson	vs. Georgia (10/5/2025)
16 (16-6-44)	Alayna Johnson	vs. Florida State (9/6/2025)
16 (16-3-31)	Nia Hall	vs. Wofford (9/15/2025)
15 (15-10-47)	Alayna Johnson	vs. NC State (9/10/2025)

**KILLS 5-SETS (K-E-TA)**

23 (23-7-54)	Nia Hall	vs. Clemson (8/31/25)
18 (18-9-39)	Nia Hall	vs. UNC (9/12/2025)
17 (17-1-31)	Victoria Hill	vs. Coastal (9/3/2025)
17 (17-13-53)	Nia Hall	vs. Coastal (9/3/2025)

**TOTAL ATTEMPTS 3-SETS (K-E-TA)**

38 (13-5-38)	Nia Hall	vs. Florida State (9/6/2025)
31 (15-5-31)	Nia Hall	vs. Kentucky (9/24/2025)
31 (7-6-31)	Victoria Hill	vs. Kentucky (9/24/2025)
29 (9-4-29)	Nia Hall	vs. Tennessee (9/26/2025)
28 (11-4-28)	Victoria Hill	vs. ETSU (8/29/2025)
28 (11-4-28)	Victoria Hill	vs. Campbell (8/30/2025)
16 (7-2-16)	Nia Hall	vs. USC Upstate (9/19/2025)

**TOTAL ATTEMPTS 4-SETS (K-E-TA)**

47 (15-10-47)	Alayna Johnson	vs. NC State (9/10/2025)
47 (14-7-47)	Nia Hall	vs. NC State (9/10/2025)
45 (16-10-45)	Nia Hall	vs. Texas A&M (10/1/2025)
44 (16-6-44)	Alayna Johnson	vs. USF (9/7/2025)
40 (16-7-40)	Alayna Johnson	vs. Georgia (10/5/2025)
33 (11-4-33)	Victoria Hill	vs. Wofford (9/15/2025)

**TOTAL ATTEMPTS 5-SETS (K-E-TA)**

54 (23-7-54)	Nia Hall	vs. Clemson (8/31/2025)
53 (17-13-53)	Nia Hall	vs. Coastal (9/3/2025)
40 (17-9-40)	Victoria Hill	vs. UNC (9/12/2024)

**POINTS 3-SETS (K-SA-TB)**

15 (15-0-0)	Nia Hall	vs. Kentucky (9/24/2025)
13 (13-0-0)	Nia Hall	vs. Florida State (9/6/2025)
12 (10-1-2)	Alayna Johnson	vs. Tennessee (9/26/2025)
12 (11-0-1)	Victoria Hill	vs. ETSU (8/29/2025)
12 (11-1-1)	Victoria Hill	vs. Campbell (8/30/2025)
10.5 (6-0-7)	Emily Beeker	vs. USC Upstate (9/19/2025)

**POINTS 4-SETS (K-SA-TB)**

18.5 (16-2-1)	Alayna Johnson	vs. Georgia (10/5/2025)
18.5 (14-4-1)	Nia Hall	vs. NC State (9/10/2025)
17 (16-0-2)	Nia Hall	vs. Texas A&M (10/1/2025)
17 (15-1-2)	Alayna Johnson	vs. Wofford (9/15/2025)
16.5 (16-0-0.5)	Alayna Johnson	vs. USF (9/7/2025)

**POINTS 5-SETS (K-SA-TB)**

24.5 (23-0-3)	Nia Hall	vs. Clemson (8/31/2025)
20.5 (17-2-3)	Nia Hall	vs. Coastal (9/3/2025)
20 (18-0-4)	Nia Hall	vs. UNC (9/12/2025)

**ASSISTS 3-SETS**

21	Sarah Jordan	vs. Tennessee (9/26/2025)
18	Sarah Jordan	vs. Kentucky (9/24/2025)
18	Kimmie Thompson	vs. ETSU (8/29/2025)
18	Kimmie Thompson	vs. Campbell (8/30/2025)
11	Sarah Jordan	vs. Florida State (9/6/2025)
15	Sarah Jordan	vs. USC Upstate (9/19/2025)

**ASSISTS 4-SETS**

36	Sarah Jordan	vs. USF (9/7/2025)
36	Sarah Jordan	vs. NC State (9/10/2025)
23	Kaia Pixler	vs. Georgia (10/5/2025)
21	Sarah Jordan	vs. Wofford (9/15/2025)
20	Kaia Pixler	vs. Texas A&M (10/1/2025)

**ASSISTS 5-SETS**

25	Sarah Jordan	vs. UNC (9/12/2025)
25	Kimmie Thompson	vs. UNC (9/12/2025)
24	Kimmie Thompson	vs. Clemson (8/31/2025)
22	Sydney Floyd	vs. Coastal (9/3/2025)

**DIGS 3-SETS**

15	Victoria Harris	vs. Kentucky (9/24/2025)
12	Victoria Harris	vs. Tennessee (9/26/2025)
12	Victoria Harris	vs. Florida State (9/7/2025)
10	Victoria Harris	vs. USC Upstate (9/19/2025)
9	Victoria Harris	vs. ETSU (8/29/2025)
8	Victoria Hill	vs. Campbell (8/20/2025)

**DIGS 4-SETS**

24	Victoria Harris	vs. NC State (9/10/2025)
22	Victoria Harris	vs. Texas A&M (10/1/2025)
20	Victoria Harris	vs. Wofford (9/15/2025)
8	Victoria Harris	vs. USF (9/7/2025)
8	Harris, Johnson, Jordan	vs. Georgia (10/5/2025)

**DIGS 5-SETS**

22	Victoria Harris	vs. UNC (9/12/2025)
18	Victoria Harris	vs. Clemson (8/31/2025)
18	Victoria Harris	vs. Coastal (9/3/2025)

**SERVICE ACES**

7	Alayna Johnson	vs. Coastal (9/3/2025)
4	Nia Hall	vs. NC State (9/10/2025)
4	Elizabeth McElveen	vs. USF (9/7/2025)
3	Alayna Johnson	vs. Texas A&M (10/5/2025)
3	Victoria Harris	vs. Georgia (10/5/2025)
3	Sydney Floyd	vs. USC Upstate (9/19/2025)
3	Elizabeth McElveen	vs. UNC (9/12/2025)
2	Kimmie Thompson	vs. Campbell (8/30/2025)
2	Elizabeth McElveen	vs. Clemson (8/31/2025)
2	Kimmie Thompson	vs. Kentucky (9/24/2025)
1	Alayna Johnson	vs. Tennessee (9/26/2025)
1	Victoria Hill	vs. Tennessee (9/26/2025)
1	Alayna Johnson	vs. ETSU (8/29/2025)
1	Kimmie Thompson	vs. ETSU (8/29/2025)
1	Alayna Johnson	vs. Wofford (9/15/2025)
1	Kimmie Thompson	vs. Wofford (9/15/2025)
1	Elise Marchal	vs. Wofford (9/15/2025)
1	Victoria Harris	vs. Wofford (9/15/2025)
1	Sydney Floyd	vs. Wofford (9/15/2025)

**BLOCKS (BS-BA)**

9 (1-8)	Ava Leahy	vs. Georgia (10/5/2025)
9 (0-9)	Emily Beeker	vs. Texas A&M (10/1/2025)
8 (0-8)	Ava Leahy	vs. UNC (9/12/2025)
7 (2-5)	Emily Beeker	vs. USC Upstate (9/19/2025)
7 (1-6)	Emily Beeker	vs. NC State (9/10/2025)
6 (3-3)	Ava Leahy	vs. Clemson (8/31/2025)
4 (1-3)	Emily Beeker	vs. USF (9/7/2025)
4 (3-1)	Ava Leahy	vs. ETSU (8/29/2025)
4 (3-1)	Nia Hall	vs. Campbell (8/30/2025)
3 (0-3)	Emily Beeker	vs. Tennessee (9/26/2025)
3 (0-3)	Emily Beeker	vs. Kentucky (9/24/2025)
3 (0-3)	Elise Marchal	vs. Kentucky (9/24/2025)
3 (0-3)	Emily Beeker	vs. Wofford (9/15/2025)
3 (0-3)	Claire Payne	vs. Coastal (9/3/2025)
3 (0-3)	Elise Marchal	vs. USF (9/7/2025)
3 (0-3)	Nia Hall	vs. Coastal (9/3/2025)

## TEAM MATCH HIGHS

## HITTING PERCENTAGE (K-E-TA)

.391 (36-9-69)	vs. USC Upstate (9/19/2025)
.337 (46-14-95)	vs. ETSU (8/29/2025)
.317 (62-16-145)	vs. Wofford (9/15/2025)
.316 (69-20-155)	vs. Coastal (9/3/2025)
.299 (41-12-97)	vs. Campbell (8/30/2025)
.200 (50-25-125)	vs. Georgia (10/5/2025)
.195 (59-27-164)	vs. Clemson (8/31/2025)
.192 (60-18-125)	vs. USF (9/7/2025)
.182 (62-34-154)	vs. UNC (9/12/2025)
.162 (49-26-142)	vs. NC State (9/10/2025)
.144 (37-20-118)	vs. Tennessee (9/26/2025)
.143 (41-24-119)	vs. Kentucky (9/24/2025)
.136 (44-26-132)	vs. Texas A&M (10/1/2025)
.098 (42-8-100)	vs. Florida State (9/6/2025)

## OPPONENT HITTING PERCENTAGE (K-E-TA)

.102 (28-19-88)	vs. USC Upstate (9/19/2025)
.143 (52-31-147)	vs. UNC (9/12/2025)
.163 (29-14-92)	vs. ETSU (8/29/2025)
.193 (46-23-119)	vs. Georgia (10/5/2025)
.196 (34-16-92)	vs. Campbell (8/30/2025)
.210 (57-23-162)	vs. Clemson (8/31/2025)
.223 (54-19-157)	vs. Wofford (9/15/2025)
.223 (57-24-148)	vs. Texas A&M (10/1/2025)
.232 (50-18-138)	vs. NC State (9/10/2025)
.278 (55-15-144)	vs. Coastal (9/3/2025)
.303 (41-11-99)	vs. Tennessee (9/26/2025)
.336 (60-18-125)	vs. USF (9/7/2025)
.340 (42-8-100)	vs. FSU (9/8/2025)
.340 (44-11-97)	vs. Kentucky (9/24/2025)

## KILLS 3-SETS (K-E-TA)

46 (46-14-95)	vs. ETSU (8/29/2025)
42 (42-8-100)	vs. Florida State (9/6/2025)
41 (41-24-119)	vs. Kentucky (9/24/2025)
41 (41-12-97)	vs. Campbell (8/30/2025)
37 (37-20-118)	vs. Tennessee (9/26/2025)
36 (36-9-69)	vs. USC Upstate (9/19/2025)

## KILLS 4-SETS (K-E-TA)

62 (62-16-145)	vs. Wofford (9/15/2025)
60 (60-18-125)	vs. USF (9/7/2025)
57 (57-24-148)	vs. Texas A&M (10/1/2025)
49 (49-26-142)	vs. NC State (9/10/2025)
46 (46-23-119)	vs. Georgia (10/5/2025)

## KILLS 5-SETS (K-E-TA)

62 (62-34-154)	vs. UNC (9/12/2025)
59 (59-27-164)	vs. Clemson (8/31/2025)
69 (69-20-155)	vs. Coastal (9/3/2025)

## TOTAL ATTEMPTS 3-SETS (K-E-TA)

123 (36-24-123)	vs. Florida State (9/7/2025)
119 (41-24-119)	vs. Kentucky (9/24/2025)
118 (37-20-118)	vs. Tennessee (9/26/2025)
97 (41-12-97)	vs. Campbell (8/30/2025)
95 (46-14-95)	vs. ETSU (8/29/2025)
69 (36-9-69)	vs. USC Upstate (9/19/2025)

## TOTAL ATTEMPTS 4-SETS (K-E-TA)

148 (57-24-148)	vs. Texas A&M (10/1/2025)
145 (62-16-145)	vs. Wofford (9/15/2025)
142 (49-26-142)	vs. NC State (9/10/2025)
125 (47-23-125)	vs. USF (9/7/2025)
119 (46-23-119)	vs. Georgia (10/5/2025)

## TOTAL ATTEMPTS 5-SETS (K-E-TA)

164 (59-27-164)	vs. Clemson (8/31/2025)
155 (69-20-155)	vs. Coastal (9/3/2025)
154 (62-34-154)	vs. UNC (9/12/2025)

## ASSISTS 3-SETS

45	vs. ETSU (8/29/2025)
39	vs. Kentucky (9/24/2025)
36	vs. Tennessee (9/26/2025)
35	vs. Campbell (8/30/2025)
35	vs. Florida State (9/6/2025)
35	vs. USC Upstate (9/19/2025)

## ASSISTS 4-SETS

58	vs. Wofford (9/15/2025)
47	vs. Georgia (10/5/2025)
46	vs. USF (9/7/2025)
44	vs. NC State (9/10/2025)
43	vs. Texas A&M (10/1/2025)

## ASSISTS 5-SETS

58	vs. UNC (9/12/2025)
57	vs. Clemson (8/31/2025)
63	vs. Coastal (9/3/2025)

## DIGS 3-SETS

42	vs. Florida State (9/6/2025)
42	vs. ETSU (8/29/2025)
41	vs. Tennessee (9/26/2025)
39	vs. Campbell (8/30/2025)
37	vs. Kentucky (9/24/2025)
36	vs. USC Upstate (9/19/2025)

## DIGS 4-SETS

75	vs. Wofford (9/15/2025)
64	vs. NC State (9/10/2025)
59	vs. Texas A&M (10/1/2025)
43	vs. Georgia (10/5/2025)
38	vs. USF (9/7/2025)

## DIGS 5-SETS

71	vs. Clemson (8/31/2025)
65	vs. Coastal (9/3/2025)
56	vs. UNC (9/12/2025)

## SERVICE ACES

13	vs. Coastal (9/3/2025)
9	vs. USC Upstate (9/19/2025)
8	vs. USF (9/7/2025)
6	vs. Georgia (10/5/2025)
6	vs. NC State (9/10/2025)
5	vs. Texas A&M (10/1/2025)
5	vs. Wofford (9/15/2025)
5	vs. UNC (9/12/2025)
5	vs. Clemson (8/31/2025)
4	vs. Campbell (8/30/2025)
3	vs. Kentucky (9/24/2025)
3	vs. Florida State (9/6/2025)
2	vs. ETSU (8/29/2025)
2	vs. Tennessee (9/26/2025)

## BLOCKS

15	vs. UNC (9/12/2025)
12	vs. Georgia (10/5/2025)
11	vs. USC Upstate (9/19/2025)
10	vs. Texas A&M (10/1/2025)
10	vs. NC State (9/10/2025)
8	vs. Clemson (8/31/2025)
6	vs. Kentucky (9/24/2025)
6	vs. USF (9/7/2025)
5	vs. Wofford (9/15/2025)
5	vs. ETSU (8/29/2025)
5	vs. Campbell (8/29/2025)
4	vs. Coastal (9/3/2025)
4	vs. Tennessee (9/26/2025)
3	vs. Florida State (9/6/2025)



# SARAH RUMELY NOBLE | HEAD COACH

- Won 50 games in three seasons as head coach at App State; the program had won just 21 games total the three seasons prior.
- Was a four-time All-SEC setter and two-time AVCA All-American at Kentucky from 2006-09.
- Won SEC Freshman of the Year honors in 2006 and SEC Player of the Year honors in 2008 as a Wildcat.
- Worked in the SEC as an assistant coach for seven years, spending five seasons at LSU and two at Arkansas
- Helped LSU bring in three nationally ranked classes in 2019 (13th), 2020 (22nd) and 2022 (17th), including nine top-100 players.

Sarah Rumely Noble, a former SEC Player of the Year and all-American, was named the University of South Carolina's 12th head volleyball coach on March 31. Rumely Noble comes to Columbia after three seasons as head coach of Appalachian State volleyball and previously spent seven seasons as an assistant coach in the SEC following a hall of fame playing career at Kentucky.

The Mountaineers went from averaging seven wins per season in the three years prior to her arrival, to averaging 17 wins over her first three seasons at the helm. In her first year in Boone, Rumely Noble led the Mountaineers to an 18-10 record, highlighted by a season-ending stretch of 11 wins in the final 12 matches. In the most recent fall campaign, App State went 18-10 and earned a spot in the National Invitational Volleyball Championship (NIVC), with four individuals making all-conference.

Rumely Noble joined the Mountaineers from LSU, where she worked as an assistant for five seasons, including as the Tigers' associate head coach in 2021. Serving as LSU's recruiting coordinator, Rumely Noble helped the Tigers bring in three nationally ranked classes in 2019 (13th), 2020 (22nd) and 2022 (17th). In her last four recruiting classes at LSU, Rumely Noble helped sign nine top-100 players, including the top-ranked player from South Carolina in the 2023 freshman class.

Over five seasons on the court, the Tigers posted 67 victories with a berth in the 2017 NCAA Tournament, while she helped implement a faster offensive system and worked primarily with the setters, her position group earned SEC Setter of the Week six times, and two made the SEC All-Freshman Team. Prior to LSU, Rumely Noble spent two seasons at Arkansas, where she ran the defense in 2016 and directed the offense in 2015. She also coached at Wake Forest from 2013-15, recruiting three players that earned All-ACC honors and working primarily with the team's setters. She began coaching at North Texas for two seasons (2010-11) where she helped the team to 43 wins.

Rumely Noble was a four-time All-SEC setter and two-time AVCA All-American at Kentucky from 2006-09, where she earned SEC Freshman of the Year honors in 2006 and SEC Player of the Year honors in 2008. She also was named a third-team Academic All-American in 2009, after making the honorable mention team in 2008. She led the Wildcats to four NCAA Tournament appearances and is still the program's all-time leader in both career and single season assists and service aces. She was inducted into the Kentucky Athletics Hall of Fame in 2017, was named an SEC Women's Legend in 2019, and made the school's "Title IX Top 50" team, honoring the 50 greatest Wildcat women's athletes of the Title IX era, in 2022.

She graduated from Kentucky in the spring of 2010 with a degree in education-kinesiology. Following graduation, she played overseas in the top professional division in France, Ligue A, where she was the starting setter for Nantes Volley Feminin from 2010-11.

*We are thrilled to welcome Sarah to South Carolina. She is a rising star in the coaching circles and is a great fit for us as her values are aligned with ours here at the University. Having been a player and assistant coach in the SEC, she knows what it takes to be successful in our league. She will be a great leader for our volleyball student-athletes and we look forward to her taking our program to greater heights.*

**Athletics Director  
JEREMIAH DONATI**

## CAREER HEAD COACHING RECORD

Year	School	OVERALL		CONFERENCE		
		W/L	PCT	W-L	PCT	Finish
'22	App State	18-10	.643	11-5	.688	t-8th
'23	App State	14-15	.483	4-12	.250	12th
'24	App State	18-10	.643	11-3	.786	t-1st
'25	South Carolina	6-8	.429	0-4	-	-
<b>TOTAL</b>		<b>56-43</b>	<b>.566</b>	<b>26-24</b>	<b>.520</b>	<b>-</b>

## RECORD BREAKDOWN

Year	OVERALL		SEC	
	Home	Road/Neutral	Home	Road
'25	5-3	1-5	0-2	0-2
<b>TOTAL</b>		<b>-</b>	<b>-</b>	<b>-</b>

## CAROLINA SUPERLATIVES

Milestone	Date	Opponent
1st Victory	8/29/25	ETSU
1st SEC Victory	-	-
1st Top-25 Victory	9/12/25	#25 UNC
Streak		Dates
Longest Win Streak	3 matches	(9/12-9/19/2025)
Longest Losing Streak	4 matches	(9/24-10/5/2025)
Longest SEC Win Streak	-	-
Longest SEC Losing Streak	4	(9/24-10/5/2025)

## NOBLE'S CAREER TIMELINE

Coaching		
2025-	Head Coach	South Carolina
2022-24	Head Coach	Appalachian State
2021	Associate Head Coach	LSU
2017-20	Assistant Coach	LSU
2015-17	Assistant Coach	Arkansas
2013-15	Assistant Coach	Wake Forest
2011-13	Assistant Coach	North Texas
Education		
2010	B.A., Kinesiology	Kentucky





# 2025 COACHES AND STAFF



## CONNOR ZIMMICK | ASSISTANT COACH

- Zimmick worked under Sarah Rumely Noble since the 2022 season with Appalachian State. Zimmick oversaw the middles and will continue in the same capacity at South Carolina along with primary scouting duties.
- Most recently, he helped guide App State to its first Sun Belt divisional title and a berth in the NIVC Tournament in 2024. The Mountaineers finished with an 18-10 overall mark, reaching 50 wins for the three seasons under Rumely Noble.
- Through Zimmick's work with the team's middles, junior Maya Winterhoff became the seventh Mountaineer in program history to earn AVCA All-Region honors as well as a spot on First Team All-Sun Belt Conference in 2024.
- The Mountaineers as a team recorded the three highest blocking totals over the program's last decade in Zimmick's three seasons.
- Zimmick joined App State after two seasons as an assistant coach for Butler. His first coaching position out of school came as a graduate assistant at Kentucky for the 2018 and 2019 seasons, seeing the Wildcats advance to the NCAA Regional Semifinals both years.
- Zimmick graduated from Wisconsin in 2018.



## CHANELLE HARGREAVES | ASSISTANT COACH

- Hargreaves worked under Rumely Noble since the 2022 season with Appalachian State and will work with the team's defensive specialists and liberos.
- Hargreaves is no stranger to the Carolina Volleyball Center. She spent her collegiate career at Florida from 2016-19, an era where the Gators collected three SEC titles and made the national title match in 2017.
- The Mountaineers' defensive specialists/libero units averaged over 14 digs per set in each of her three seasons on staff, while also helping improve the defense's serve receiving numbers. The passing quality carried over to the App State offense, which posted two of its highest team hitting percentage totals over the last 10 seasons.
- She earned her degree in sociology from Florida in May 2020 and received her Master's degree in sports management from Florida in May 2022.
- While working towards her postgraduate degree, she worked with the Florida football program in recruiting and student-athlete development.



## CHRISTIAN RUPERT | ASSISTANT COACH

- Rupert joined the Gamecocks staff in May of 2025, after working with the Ball State men's volleyball program since 2021.
- Rupert enjoyed three 20-win seasons in his time at Ball State, highlighted by a historic 2022 season where the Cardinals went 23-4 with Midwestern Intercollegiate Volleyball Association (MIVA) regular season and tournament titles.
- Rupert came to Ball State after serving as a volunteer assistant coach for the Princeton Tigers.
- Prior to his coaching stint at Princeton, Rupert played professional volleyball in Croatia for Mladost Ribola Kaštela in 2018 and 2019, starting for the team as it reached the league title match.
- As a collegiate student-athlete, Rupert was a middle blocker for BYU from 2014-2018. He helped the Cougars make appearances in the NCAA Championship match in 2016 and 2017 and the semifinals in 2018.
- He earned his bachelor's degree in political science from BYU in 2018 and his Graduate Certificate in Business Administration from Ball State in May 2025.

## SUPPORT STAFF



**JESS O'BRIEN**  
Director of Operations  
Technical Coordinator



**KATELYN WOOLFOLK**  
Strength and Conditioning



**JENN HEROD**  
Head Athletic Trainer



**JEREMY FORD**  
Team Nutritionist



**SAMMIE GRANT**  
Communications Director





# #0 VICTORIA HARRIS

5-4 / SOPHOMORE / DEFENSIVE SPECIALIST / BIOLOGY MAJOR / COLUMBIA, S.C. (CARDINAL NEWMAN)

## SEASON HIGHLIGHTS

- All-Tournament Team at Gamecock Classic

## CAREER NOTABLES

- Named to the SEC All-Freshman Team, the ninth Gamecock in program history to make the team and first since 2021.
- She ranked sixth in the SEC for digs per set, at 4.04, 14th nationally among Division I freshmen.
- Finished with four 20-dig matches, most by a Gamecock freshman in the SEC era.
- Had a season-high 27 digs at LSU on Nov. 13, the most in a game by a freshman Gamecock in the rally-scoring era.

## CAREER STATISTICS

YEAR	SP	MP	KILL	K/S	ERR	ATT	PCT	AST	A/S	SA	SA/S	SE	DIG	D/S	RE	BS	BA	TB	B/S	BE	BHE	PTS	PT/S
2024	98	28	1	0.01	1	7	.000	103	1.05	19	0.19	14	396	4.04	15	0	0	0	0.00	0	0	20.0	0.20
2025	53	14	2	0.04	0	2	1.000	72	1.36	10	0.19	12	205	3.87	9	0	0	0	0.00	0	0	12.0	0.23
	<b>151</b>	<b>42</b>	<b>3</b>	<b>.002</b>	<b>1</b>	<b>9</b>	<b>0.222</b>	<b>175</b>	<b>1.16</b>	<b>29</b>	<b>0.19</b>	<b>26</b>	<b>601</b>	<b>3.98</b>	<b>24</b>	<b>0</b>	<b>0</b>	<b>0</b>	<b>0.00</b>	<b>0</b>	<b>0</b>	<b>32.0</b>	<b>0.21</b>

## SEASON HIGHS

Assists	12	Wofford	9/15/25
Aces	3	Georgia	10/5/25
Digs	24	NC State	9/10/25
Serve Reception	-	-	-

## CAREER HIGHS

Assists	12	Wofford	9/15/25
Aces	3	3x, last at Georgia	10/5/25
Digs	27	LSU	11/13/24
Serve Reception	44	Mississippi State	9/27/24



# #1 PHOEBE REYES

6-1 / JUNIOR / OUTSIDE / - MAJOR / SAN FRANCISCO DE MACORIS, DOMINICAN REPUBLIC (BARTON CC)

## SEASON HIGHLIGHTS

- 

## BEFORE SOUTH CAROLINA

- Spent two seasons at Barton Community College. Helped lead Barton to consecutive KJCCC titles and a 58-10 overall mark in her two seasons.
- 2023 KJCCC/Region 6 Freshman of the Year, a two-time KJCCC/Region 6 Most Valuable Player, a 2024 All-Tournament selection at nationals, and a two-time NJCAA All-America selection.
- Played on the Dominican Republic U21 NORCECA Continental Team in 2024, which made the semi-final round before losing to Team USA.

## CAREER STATISTICS

YEAR	SP	MP	KILL	K/S	ERR	ATT	PCT	AST	A/S	SA	SA/S	SE	DIG	D/S	RE	BS	BA	TB	B/S	BE	BHE	PTS	PT/S
2025	7	4	1	0.14	1	2	.000	0	.000	1	0.14	3	1	0.14	1	1	0	1	0.14	0	0	3.0	0.43
	-	-	-	-	-	-	-	-	-	-	-	-	-	-	-	-	-	-	-	-	-	-	-

## SEASON HIGHS

Kills	1	USC Upstate	9/19/25
Attempts	-	-	-
Hit. % (Min. 5 Kills)	-	-	-
Assists	-	-	-
Aces	1	NC State	9/10/25
Digs	1	Florida State	9/6/25
Solo Blocks	1	USC Upstate	9/19/25
Block Assists	-	-	-
Total Blocks	-	-	-

## CAREER HIGHS

Kills	1	USC Upstate	9/19/25
Attempts	-	-	-
Hit. % (Min. 5 Kills)	-	-	-
Assists	-	-	-
Aces	1	NC State	9/10/25
Digs	1	Florida State	9/6/25
Solo Blocks	1	USC Upstate	9/19/25
Block Assists	-	-	-
Total Blocks	-	-	-



## #2 VICTORIA HILL

5-11 / FRESHMAN / OUTSIDE / - MAJOR / OVIEDO, FLA. (TRINITY PREP)

### SEASON HIGHLIGHTS

- All-Tournament Team at Gamecock Classic

### BEFORE SOUTH CAROLINA

- Three-time Girls Private School Athlete of the Year. Played on the Trinity Prep varsity volleyball team for five years.
- At the club level, Hill was part of the Gamepoint 18 Rox club and helped the team to a 2020 AAU Nationals title and runner-up finish in 2021. She was also named an AAU All-American in 2020 and 2021.
- In addition to volleyball, Hill competed on the track and field team. In her five years as a jumps specialist, she made the top three at states 11 times.

### CAREER STATISTICS

YEAR	SP	MP	KILL	K/S	ERR	ATT	PCT	AST	A/S	SA	SA/S	SE	DIG	D/S	RE	BS	BA	TB	B/S	BE	BHE	PTS	PT/S
2025	52	14	118	2.27	58	328	.183	2	0.04	11	0.21	24	91	1.75	10	2	6	8	0.15	4	0	134.0	2.58

### SEASON HIGHS

Kills	18	Clemson	8/31/25
Attempts	47	Clemson	8/31/25
Hit. % (Min. 5 Kills)	.556	USC Upstate	9/19/25
Assists	1	2x, last at Coastal	9/3/25
Aces	2	3x, last at USC Upstate	9/19/25
Digs	14	Clemson	8/31/25
Solo Blocks	1	2x, last at Kentucky	9/24/25
Block Assists	2	ETSU	8/29/25
Total Blocks	2	ETSU	8/29/25

### CAREER HIGHS

Kills	18	Clemson	8/31/25
Attempts	47	Clemson	8/31/25
Hit. % (Min. 5 Kills)	.556	USC Upstate	9/19/25
Assists	1	2x, last at Coastal	9/3/25
Aces	2	2x, last at USF	9/7/25
Digs	14	Clemson	8/31/25
Solo Blocks	1	2x, last at Kentucky	9/24/25
Block Assists	2	ETSU	8/29/25
Total Blocks	2	ETSU	8/29/25



## #4 LAIYA EBO

6-1 / JUNIOR / OPPOSITE / - MAJOR / WASHINGTON, D.C. (BUTLER)

### SEASON HIGHLIGHTS

- 

### BEFORE SOUTH CAROLINA

- Played for two seasons at Butler, highlighted by a 2024 season with 154 kills over 85 sets played.
- Has two seasons of eligibility remaining.
- Majored in political science at Butler, earning a place on the 2024 College Sports Communicators' Academic All-District team.
- Her brother, Mark, played football at Holy Cross from 2016-19 and her sister, Lauren, played college basketball at Penn State, Texas and Notre Dame between 2018 and 2023.

### CAREER STATISTICS

YEAR	SP	MP	KILL	K/S	ERR	ATT	PCT	AST	A/S	SA	SA/S	SE	DIG	D/S	RE	BS	BA	TB	B/S	BE	BHE	PTS	PT/S
2023-24*	138	45	258	1.87	132	646	.195	4	0.03	7	0.08	18	43	0.31	0	2	67	69	0.50	18	0	300.5	2.18

\* - at Butler

YEAR	SP	MP	KILL	K/S	ERR	ATT	PCT	AST	A/S	SA	SA/S	SE	DIG	D/S	RE	BS	BA	TB	B/S	BE	BHE	PTS	PT/S
2025	13	7	20	1.54	6	39	.359	1	.08	0	0.00	0	4	0.31	0	0	9	9	0.69	2	0	24.5	2.15

### SEASON HIGHS

Kills	12	Georgia	10/5/25
Attempts	19	Georgia	10/5/25
Hit. % (Min. 5 Kills)	.526	Georgia	10/5/25
Assists	-	-	-
Aces	-	-	-
Digs	3	Texas A&M	10/1/25
Solo Blocks	-	-	-
Block Assists	4	Texas A&M	10/1/25
Total Blocks	4	Texas A&M	10/1/25

### CAREER HIGHS

Kills	17	Bellarmine	9/20/24
Attempts	26	Bellarmine	9/20/24
Hit. % (Min. 5 Kills)	.615	Bellarmine	9/20/24
Assists	1	4x, last vs. Seton Hall	10/27/23
Aces	3	Pacific	9/13/24
Digs	5	Marquette	11/6/24
Solo Blocks	1	2x, last vs. Villanova	10/26/24
Block Assists	6	Georgetown	11/22/24
Total Blocks	6	2x, last vs. Georgetown	11/22/24



# #5 SYDNEY DAVIS

6-0 / FRESHMAN / MIDDLE / - MAJOR / ORLANDO, FLA. (TIMBER CREEK)

## SEASON HIGHLIGHTS

- 

## BEFORE SOUTH CAROLINA

- Played club for Gamepoint Volleyball, helping the team to a 2nd place at the 2021 AAU Nationals.
- Named to the 2023 Junior Volleyball Association's World Challenge All-Tournament Team, a 2024 Triple Crown tournament Show Stopper and 2024 USA Volleyball Nationals Supernova.
- Hit .474 with 211 kills as a senior; set her high school record for blocks in a season in 2021.
- Florida Athletic Coaches Association 2024 all-state honoree.

## CAREER STATISTICS

YEAR	SP	MP	KILL	K/S	ERR	ATT	PCT	AST	A/S	SA	SA/S	SE	DIG	D/S	RE	BS	BA	TB	B/S	BE	BHE	PTS	PT/S
2025	-	-	-	-	-	-	-	-	-	-	-	-	-	-	-	-	-	-	-	-	-	-	-
	-	-	-	-	-	-	-	-	-	-	-	-	-	-	-	-	-	-	-	-	-	-	-

## SEASON HIGHS

Kills -  
Attempts -  
Hit. % (Min. 5 Kills) -  
Assists -  
Aces -  
Digs -  
Solo Blocks -  
Block Assists -  
Total Blocks -

## CAREER HIGHS

Kills -  
Attempts -  
Hit. % (Min. 5 Kills) -  
Assists -  
Aces -  
Digs -  
Solo Blocks -  
Block Assists -  
Total Blocks -



# #6 SYDNEY FLOYD

5-9 / JUNIOR / SETTER / BUSINESS MAJOR / MANHATTAN BEACH, CALIF. (VISTAMAR)

## SEASON HIGHLIGHTS

- 

## CAREER NOTABLES

- Worked predominantly as a serving sub as a sophomore, playing in 10 matches in 2024.
- Recorded her first collegiate double-double, finishing with 20 assists and 12 digs against 4th-ranked Florida as a freshman in 2023.

## CAREER STATISTICS

YEAR	SP	MP	KILL	K/S	ERR	ATT	PCT	AST	A/S	SA	SA/S	SE	DIG	D/S	RE	BS	BA	TB	B/S	BE	BHE	PTS	PT/S
2023	41	14	0	0.00	0	0	.000	194	4.73	12	0.29	10	66	1.61	0	0	0	0	0.00	0	3	12.0	0.29
2024	26	10	0	0.00	0	0	.000	20	0.77	4	0.15	10	9	0.35	0	0	0	0	0.00	0	0	4.0	0.15
2025	20	11	0	0.00	0	0	.000	65	3.25	4	0.20	7	25	1.25	0	0	0	0	0.00	0	0	4.0	0.20
	87	35	0	0.00	0	0	.000	279	2.92	20	0.21	27	100	1.07	0	0	0	0	0.00	0	3	20.0	0.21

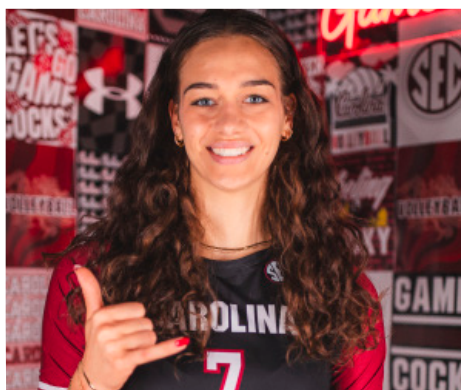
## SEASON HIGHS

Kills -  
Attempts -  
Hit. % (Min. 5 Kills) -  
Assists 22 Coastal 9/3/25  
Aces 3 USC Upstate 9/19/25  
Digs 6 Coastal 9/3/25  
Solo Blocks -  
Block Assists -  
Total Blocks -

## CAREER HIGHS

Kills -  
Attempts -  
Hit. % (Min. 5 Kills) -  
Assists 26 Towson 8/26/23  
Aces 5 Troy 9/3/23  
Digs 12 Florida 10/1/23  
Solo Blocks -  
Block Assists -  
Total Blocks -





# #7 LINA MERZ

6-2 / FRESHMAN / OPPOSITE / - MAJOR / DRESDEN, GERMANY (SPORTGYMNASIUM DRESDEN)

## SEASON HIGHLIGHTS

- 

## BEFORE SOUTH CAROLINA

- Played at the club level for VC Olympia Dresden since 2020-21. Helped her team win the national U20 championship and Vice-Champion at the U18 level in 2022. Her team finished third at this year's German U20 National Championship.
- Intends to major in International Business.
- Her grandfather was a member of the German National Team in rowing, winning Olympic gold medals at the 1968 and 1972 games.

## CAREER STATISTICS

YEAR	SP	MP	KILL	K/S	ERR	ATT	PCT	AST	A/S	SA	SA/S	SE	DIG	D/S	RE	BS	BA	TB	B/S	BE	BHE	PTS	PT/S
2025	-	-	-	-	-	-	-	-	-	-	-	-	-	-	-	-	-	-	-	-	-	-	-

## SEASON HIGHS

Kills	-	-
Attempts	-	-
Hit. % (Min. 5 Kills)	-	-
Assists	-	-
Aces	-	-
Digs	-	-
Solo Blocks	-	-
Block Assists	-	-
Total Blocks	-	-

## CAREER HIGHS

Kills	-	-
Attempts	-	-
Hit. % (Min. 5 Kills)	-	-
Assists	-	-
Aces	-	-
Digs	-	-
Solo Blocks	-	-
Block Assists	-	-
Total Blocks	-	-



# #8 ANNE BRADLEY BING

5-8 / FRESHMAN / DEFENSIVE SPECIALIST / - MAJOR / GASTONIA, N.C. (GASTON DAY SCHOOL)

## SEASON HIGHLIGHTS

- 

## BEFORE SOUTH CAROLINA

- Played at the club level for Stars Volleyball Club, which made the USA Volleyball National tournament four years in a row and had multiple top finishes in the gold bracket at AAU Nationals. Most recently, her Stars team finished third in their division at USA Volleyball's 18s Junior Nationals.
- Helped Gaston Day School win the North Carolina 2A state championship as a senior. Leaves high school holding school records for career digs, single-season kills and single-season assists.

## CAREER STATISTICS

YEAR	SP	MP	KILL	K/S	ERR	ATT	PCT	AST	A/S	SA	SA/S	SE	DIG	D/S	RE	BS	BA	TB	B/S	BE	BHE	PTS	PT/S
2025	4	4	0	0.00	0	0	0.00	0	0.00	1	0.25	1	1	0.25	0	0	0	0	0.00	0	0	1.00	0.25

## SEASON HIGHS

Assists	-	-	-
Aces	1	Florida State	9/6/25
Digs	1	Florida State	9/6/25
Serve Reception	-	-	-

## CAREER HIGHS

Assists	-	-	-
Aces	1	Florida State	9/6/25
Digs	1	Florida State	9/6/25
Serve Reception	-	-	-





# #9 AVA LEAHY

6-1 / JUNIOR / MIDDLE / - MAJOR / CHARLOTTE, N.C. (APP STATE)

## SEASON HIGHLIGHTS

- 

## BEFORE SOUTH CAROLINA

- Spent two seasons at Appalachian State, appearing in 52 matches and 195 sets in Boone.
- Named second-team All-Sun Belt Conference in 2024.
- Totaled 365 kills (1.87 k/s) with a hitting percentage of .243 in her App State career. Defensively, she had 150 total blocks.
- Recorded double-figure kills in 11 matches as a sophomore, including a career high 22 kills against Marshall on Nov. 9, 2024.

## CAREER STATISTICS

YEAR	SP	MP	KILL	K/S	ERR	ATT	PCT	AST	A/S	SA	SA/S	SE	DIG	D/S	RE	BS	BA	TB	B/S	BE	BHE	PTS	PT/S
2023-24*	195	52	365	1.87	154	867	.243	6	0.03	0	0.00	1	46	0.12	0	18	132	150	0.77	17	0	449.0	2.30

\* - at App State

YEAR	SP	MP	KILL	K/S	ERR	ATT	PCT	AST	A/S	SA	SA/S	SE	DIG	D/S	RE	BS	BA	TB	B/S	BE	BHE	PTS	PT/S
2025	52	14	61	1.17	19	143	.294	1	0.02	2	0.04	15	22	0.42	0	2	35	37	0.71	9	0	82.5	1.59
-	-	-	-	-	-	-	-	-	-	-	-	-	-	-	-	-	-	-	-	-	-	-	-

## SEASON HIGHS

Kills	7	Wofford	9/15/25
Attempts	15	Wofford	9/15/25
Hit. % (Min. 5 Kills)	.667	ETSU	8/29/25
Assists	1	Texas A&M	10/1/25
Aces	1	Florida State	9/6/25
Digs	5	2x, last vs. Georgia	10/5/25
Solo Blocks	1	Wofford	9/15/25
Block Assists	8	UNC	9/12/25
Total Blocks	9	Georgia	10/5/25

## CAREER HIGHS

Kills	22	Marshall	11/9/24
Attempts	37	Marshall	11/9/24
Hit. % (Min. 5 Kills)	.714	Bethune-Cookman	9/1/23
Assists	1	6x, last vs. Coastal Carolina	10/24/24
Aces	0	-	-
Digs	5	Campbell	9/1/23
Solo Blocks	2	4x, last vs. Texas St.	11/23/24
Block Assists	9	Coastal Carolina	10/24/24
Total Blocks	9	Coastal Carolina	10/24/24



# #10 SARAH JORDAN

6-0 / SENIOR / SETTER / ECONOMICS / LEESBURG, VA. (TOWSON)

## SEASON HIGHLIGHTS

- 

## CAREER NOTABLES

- Averaged 9.91 assists per set in 2024, eighth-highest in a season in the program's rally-scoring era.
- Led the team to a historic night against ECU, with a team hitting percentage of .507 in three sets, the fifth-highest efficiency in program history.
- Passed out 35 assists and helped the offense hit .320 in a road sweep at #19 Florida.
- Set the program's rally-scoring era record for assists in a game, passing out 66 in a win at LSU.
- Finished the season with 10 double-doubles.

## CAREER STATISTICS

YEAR	SP	MP	KILL	K/S	ERR	ATT	PCT	AST	A/S	SA	SA/S	SE	DIG	D/S	RE	BS	BA	TB	B/S	BE	BHE	PTS	PT/S
2022-23*	197	56	98	0.49	11	212	.396	1515	7.69	45	0.23	79	406	2.06	10	2	22	24	0.12	0	10	156.0	-

\* - at Towson

YEAR	SP	MP	KILL	K/S	ERR	ATT	PCT	AST	A/S	SA	SA/S	SE	DIG	D/S	RE	BS	BA	TB	B/S	BE	BHE	PTS	PT/S
2024	96	28	41	0.43	16	124	.202	951	9.91	17	0.18	46	214	2.23	0	0	29	29	0.30	3	0	72.5	0.75
2025	46	13	4	0.09	1	8	.375	257	5.59	0.00	0	3	74	1.61	0	0	2	2	0.04	0	0	5.00	0.11
	142	41	45	0.32	17	132	.212	1208	8.51	17	0.12	49	288	2.03	0	0	31	31	0.22	3	0	77.5	0.55

## SEASON HIGHS

Kills	3	NC State	9/10/25
Attempts	4	2x, last at NC State	9/10/25
Hit. % (Min. 5 Kills)	-	-	-
Assists	36	2x, last at NC State	9/10/25
Aces	-	-	-
Digs	10	Wofford	9/15/25
Solo Blocks	-	-	-
Block Assists	2	NC State	9/10/25
Total Blocks	2	NC State	9/10/25

## CAREER HIGHS

Kills	6	6x; last vs. Delaware	11/18/23
Attempts	13	Delaware	9/24/23
Hit. % (Min. 5 Kills)	.625	2x; last vs. Stony Brook	10/22/23
Assists	66	LSU	11/13/24
Aces	3	3x, last at Alabama	11/22/24
Digs	18	2x; last vs. Delaware	11/18/23
Solo Blocks	1	2x; last vs. N.C. A&T	10/29/23
Block Assists	4	2x, last vs. Florida	11/27/24
Total Blocks	4	2x, last vs. Florida	11/27/24



# #12 CLAIRE PAYNE

6-1 / FRESHMAN / MIDDLE / - MAJOR / WAKARUSA, IND. (NORTHWOOD)

## SEASON HIGHLIGHTS

- 

## BEFORE SOUTH CAROLINA

- AVCA All-Region and Indiana High School Volleyball Coaches Association All-Region teams during her high school career. As a senior, she made the IHS-VCA 1st team All-State.
- Finished her high school career with 1,321 kills, 373 total blocks and a career hitting percentage of .396.
- Competed for NIVA in club, helping it to a top-five finish at USA Volleyball's 18s Junior National Championship in April 2025, earning her a spot on the all-tournament team.

## CAREER STATISTICS

YEAR	SP	MP	KILL	K/S	ERR	ATT	PCT	AST	A/S	SA	SA/S	SE	DIG	D/S	RE	BS	BA	TB	B/S	BE	BHE	PTS	PT/S
2025	9	4	5	0.56	2	14	.214	1	0.11	0	0.00	0	0	0	0	0	5	5	0.56	0	0	7.5	0.83
	-	-	-	-	-	-	-	-	-	-	-	-	-	-	-	-	-	-	-	-	-	-	-

## SEASON HIGHS

Kills	4	Coastal Carolina	9/3/25
Attempts	10	Coastal Carolina	9/3/25
Hit. % (Min. 5 Kills)	-	-	-
Assists	1	Coastal Carolina	9/3/25
Aces	-	-	-
Digs	-	-	-
Solo Blocks	-	-	-
Block Assists	3	Coastal Carolina	9/3/25
Total Blocks	3	Coastal Carolina	9/3/25

## CAREER HIGHS

Kills	4	Coastal Carolina	9/3/25
Attempts	10	Coastal Carolina	9/3/25
Hit. % (Min. 5 Kills)	-	-	-
Assists	1	Coastal Carolina	9/3/25
Aces	-	-	-
Digs	-	-	-
Solo Blocks	-	-	-
Block Assists	3	Coastal Carolina	9/3/25
Total Blocks	3	Coastal Carolina	9/3/25



# #13 ALAYNA JOHNSON

6-1 / SENIOR / OUTSIDE / SPORT & ENTERTAINMENT MANAGEMENT / KERSHAW, S.C. (NORTH CENTRAL)

## SEASON HIGHLIGHTS

- Set a career high in service aces, recording 7 against Coastal Carolina (9/3/2025)

## CAREER NOTABLES

- Set career highs for kills (236), assists (18), aces (23), digs (148) and points scored (269.5) in a single season in 2024
- Reached 500 career kills in the regular season finale against Texas A&M.

## CAREER STATISTICS

YEAR	SP	MP	KILL	K/S	ERR	ATT	PCT	AST	A/S	SA	SA/S	SE	DIG	D/S	RE	BS	BA	TB	B/S	BE	BHE	PTS	PT/S
2022	58	20	98	1.69	58	322	.124	2	0.03	3	0.05	3	25	0.43	9	1	15	16	0.28	3	1	109.5	1.88
2023	78	24	166	2.13	79	459	.190	3	0.04	10	0.13	11	80	1.03	11	2	20	22	0.28	1	0	188.0	2.41
2024	90	26	242	2.69	114	672	.190	18	0.20	24	0.27	36	151	1.68	38	5	12	17	0.19	2	0	277.0	3.08
2025	53	14	154	2.91	63	385	.236	20	0.38	17	0.32	14	77	1.45	7	1	14	15	0.28	1	0	179.0	3.38
	<b>279</b>	<b>84</b>	<b>660</b>	<b>2.37</b>	<b>314</b>	<b>1838</b>	<b>.188</b>	<b>43</b>	<b>0.15</b>	<b>54</b>	<b>0.19</b>	<b>64</b>	<b>333</b>	<b>1.19</b>	<b>65</b>	<b>9</b>	<b>61</b>	<b>70</b>	<b>0.25</b>	<b>7</b>	<b>1</b>	<b>1753.5</b>	<b>2.70</b>

## SEASON HIGHS

Kills	16	2x, last vs. Georgia	10/5/25
Attempts	47	NC State	9/10/25
Hit. % (Min. 5 Kills)	.571	Coastal Carolina	9/3/25
Assists	4	3x, last at Florida State	9/6/25
Aces	7	Coastal Carolina	9/3/25
Digs	16	Wofford	9/15/25
Solo Blocks	1	NC State	9/10/25
Block Assists	3	Clemson	8/31/25
Total Blocks	3	Clemson	8/31/25

## CAREER HIGHS

Kills	17	2x, last vs. Tennessee	11/25/23
Attempts	47	NC State	9/10/25
Hit. % (Min. 5 Kills)	.571	Coastal Carolina	9/3/25
Assists	3	Ole Miss	10/18/24
Aces	7	Coastal Carolina	9/3/25
Digs	15	LSU	11/12/23
Solo Blocks	2	Auburn	10/8/23
Block Assists	4	Alabama	11/12/22
Total Blocks	4	Alabama	11/12/22



# #14 KAIA PIXLER

6-0 / FRESHMAN / SETTER / - MAJOR / PHOENIX, ARIZ. (SUNNYSLOPE)

## SEASON HIGHLIGHTS

- 

## BEFORE SOUTH CAROLINA

- Played at the club level for Arizona Storm Elite VBC, winning five USA Volleyball nationals titles in a six-year span (13s, 14s, 16s, 17s and 18s).
- While leading her club team to the open division title at USA Volleyball's 18s Junior Nationals, she also made the division's All-Tournament team.
- Was a four-year varsity letterwinner at Sunnyslope High School, going over 2,500 assists and 100 aces.
- Mother played volleyball at Texas Tech and father played volleyball at Arizona State and Long Beach.

## CAREER STATISTICS

YEAR	SP	MP	KILL	K/S	ERR	ATT	PCT	AST	A/S	SA	SA/S	SE	DIG	D/S	RE	BS	BA	TB	B/S	BE	BHE	PTS	PT/S
2025	3	3	0	0.00	0	0	0.00	8	2.67	0	0.00	0	2	0.67	0	0	0	0	0.00	0	0	0	0.00
-	-	-	-	-	-	-	-	-	-	-	-	-	-	-	-	-	-	-	-	-	-	-	-

## SEASON HIGHS

Kills	-	-	-
Attempts	-	-	-
Hit. % (Min. 5 Kills)	-	-	-
Assists	4	Tennessee	9/26/25
Aces	-	-	-
Digs	2	Tennessee	9/26/25
Solo Blocks	-	-	-
Block Assists	-	-	-
Total Blocks	-	-	-

## CAREER HIGHS

Kills	-	-	-
Attempts	-	-	-
Hit. % (Min. 5 Kills)	-	-	-
Assists	4	Tennessee	9/26/25
Aces	-	-	-
Digs	2	Tennessee	9/26/25
Solo Blocks	-	-	-
Block Assists	-	-	-
Total Blocks	-	-	-



# #15 NIA HALL

5-10 / JUNIOR / OUTSIDE / - MAJOR / LORAIN, OHIO (CLEVELAND STATE)

## SEASON HIGHLIGHTS

- All-Tournament Team at Gamecock Classic

## BEFORE SOUTH CAROLINA

- Spent two seasons at Cleveland State, playing in 58 matches for the Vikings.
- Made a big jump in production as a sophomore, ranking second on the team in kills in 2024 while leading the Vikings to a Horizon League title and a spot in the NCAA tournament for the first time since 2017. She earned a spot on the Horizon League's all-conference first team for her efforts.
- Finished her career at Cleveland State with 550 kills, 185 digs and 111 total blocks in 197 sets played.

## CAREER STATISTICS

YEAR	SP	MP	KILL	K/S	ERR	ATT	PCT	AST	A/S	SA	SA/S	SE	DIG	D/S	RE	BS	BA	TB	B/S	BE	BHE	PTS	PT/S
2023-24*	197	58	550	2.79	248	1465	.206	18	0.22	20	0.10	36	185	0.94	15	14	111	125	0.63	23	0	639.5	3.25

\* - at Cleveland State\*

YEAR	SP	MP	KILL	K/S	ERR	ATT	PCT	AST	A/S	SA	SA/S	SE	DIG	D/S	RE	BS	BA	TB	B/S	BE	BHE	PTS	PT/S
2025	53	14	177	3.34	78	464	.213	4	0.08	7	0.13	16	62	1.17	13	0	21	21	0.40	4	1	194.5	3.67
-	-	-	-	-	-	-	-	-	-	-	-	-	-	-	-	-	-	-	-	-	-	-	-

## SEASON HIGHS

Kills	23	Clemson	8/31/25
Attempts	54	Clemson	8/31/25
Hit. % (Min. 5 Kills)	.419	Wofford	9/15/25
Assists	2	ETSU	8/29/25
Aces	4	NC State	9/10/25
Digs	14	Clemson	8/31/25
Solo Blocks	-	-	-
Block Assists	4	UNC	9/12/25
Total Blocks	4	UNC	9/12/25

## CAREER HIGHS

Kills	23	3x, last vs. Clemson	8/31/25
Attempts	55	Milwaukee	11/23/24
Hit. % (Min. 5 Kills)	.424	UNC Greensboro	9/13/24
Assists	2	2x, last vs. Robert Morris	10/25/24
Aces	3	College of Charleston	9/1/24
Digs	14	2x, last vs. Clemson	8/31/25
Solo Blocks	2	2x, last vs. Green Bay	11/24/24
Block Assists	7	Milwaukee	11/16/24
Total Blocks	8	Bucknell	9/9/23





## #17 EMILY BEEKER

6-5 / SENIOR / MIDDLE / - MAJOR / HENDERSONVILLE, N.C. (TENNESSEE)

## SEASON HIGHLIGHTS

- —

BEFORE SOUTH CAROLINA

- Spent four seasons at Tennessee, playing in 47 matches.
- Played in 43 sets during the 2024 campaign, totaling 60 kills with a .396 hitting percentage.
- Has one season of eligibility remaining.
- Her brother, Ben, played basketball at Carson-Newman and her father played basketball at Mars Hill.

## CAREER STATISTICS

YEAR	SP	MP	KILL	K/S	ERR	ATT	PCT	AST	A/S	SA	SA/S	SE	DIG	D/S	RE	BS	BA	TB	B/S	BE	BHE	PTS	PT/S
2021-24*	108	47	120	1.11	36	226	.367	1	0.01	0	0.00	0	11	0.10	0	12	58	70	0.65	4	0	158.5	1.47

\* - at Tennessee\*

YEAR	SP	MP	KILL	K/S	ERR	ATT	PCT	AST	A/S	SA	SA/S	SE	DIG	D/S	RE	BS	BA	TB	B/S	BE	BHE	PTS	PT/S
2025	52	14	64	1.23	26	135	.281	2	0.04	0	0.00	0	17	0.33	0	6	50	56	1.08	1	1	95.0	1.83

.....

## SEASON HIGHS

<b>Kills</b>	9	NC State	9/10/25
<b>Attempts</b>	17	UNC	9/12/25
<b>Hit. % (Min. 5 Kills)</b>	.857	South Florida	9/7/25
<b>Assists</b>	1	Florida State	9/6/25
<b>Aces</b>	-	-	-
<b>Digs</b>	3	ETSU	8/29/25
<b>Solo Blocks</b>	2	USC Upstate	9/19/25
<b>Block Assists</b>	9	Texas A&M	10/1/25
<b>Total Blocks</b>	9	Texas A&M	10/1/25

## CAREER HIGHS

<b>Kills</b>	9	3x, last vs. NC State	9/10/25
<b>Attempts</b>	17	UNC	9/12/25
<b>Hit. %</b> (Min. 5 Kills)	.857	South Florida	9/7/25
<b>Assists</b>	1	LSU	10/08/23
<b>Aces</b>	-	-	-
<b>Digs</b>	3	ETSU	8/29/25
<b>Solo Blocks</b>	2	2x, last vs. USC Upstate	9/19/25
<b>Block Assists</b>	9	Texas A&M	10/1/25
<b>Total Blocks</b>	9	Texas A&M	10/1/25



## #19 ELIZABETH MCELVEEN

5-7 / JUNIOR / DEFENSIVE SPECIALIST / BUSINESS / ROCK HILL, S.C. (NORTHWESTERN)

## SEASON HIGHLIGHTS

- 

## CAREER HIGHLIGHTS

- Grew into a vital role for the defense, playing across the back row as defensive specialist in 89 sets.
- Shattered her career high for digs at Duke, popping up 17. She had 13 digs total as a freshman (31 sets).
- Recorded 12 digs and a career-high four service aces against Wake Forest – all four aces coming in the first set.
- Recorded her third double-digit dig match of the season in the NCAA tournament against Dayton, finishing the night with 11.

## CAREER STATISTICS

YEAR	SP	MP	KILL	K/S	ERR	ATT	PCT	AST	A/S	SA	SA/S	SE	DIG	D/S	RE	BS	BA	TB	B/S	BE	BHE	PTS	PT/S
2023	31	14	0	0.00	0	0	.000	3	0.10	0	0.00	7	13	0.42	1	0	0	0	0.00	0	0	0.0	0.00
2024	93	28	0	0.00	0	1	.000	16	0.17	22	0.24	32	154	1.66	11	0	1	1	0.01	0	0	22.5	0.24
2025	41	13	1	0.02	0	1	1.00	3	0.07	10	0.24	13	26	0.63	2	0	0	0	0.00	0	0	11.0	0.27
	165	55	1	0.01	0	2	.500	22	0.13	32	0.19	52	193	1.17	14	0	1	1	0.01	0	0	33.5	0.20

## SEASON HIGHS

<b>Assists</b>	1	ETSU	8/29/25
<b>Aces</b>	4	South Florida	9/7/25
<b>Digs</b>	9	NC State	9/10/25
<b>Serve Reception</b>	-	-	-

## CAREER HIGHS

<b>Assists</b>	3	East Carolina	9/17/24
<b>Aces</b>	4	South Florida	9/7/25
<b>Digs</b>	17	Duke	9/1/24
<b>Serve Reception</b>	20	LSU	11/13/24





# #23 ELISE MARCHAL

6-1 / SOPHOMORE / OPPOSITE / - MAJOR / KINGS MILL, OHIO (APP STATE)

## SEASON HIGHLIGHTS

- 

## BEFORE SOUTH CAROLINA

- Spent her freshman season with Appalachian State, earning the Sun Belt Conference's Freshman of the Year Award and a Second-Team All-SBC spot.
- Appeared in 28 matches, totaling 245 kills and a hitting percentage of .254 along with 288 digs and 75 total blocks.
- Helped the Mountaineers to their first appearance in the NIVC Tournament since 2018 and went for 11 kills, three blocks, and two aces against Northern Colorado in the first round (12/12).

## CAREER STATISTICS

YEAR	SP	MP	KILL	K/S	ERR	ATT	PCT	AST	A/S	SA	SA/S	SE	DIG	D/S	RE	BS	BA	TB	B/S	BE	BHE	PTS	PT/S
2024*	112	28	245	2.19	81	645	.254	27	0.24	35	0.31	40	288	2.57	17	4	71	75	0.67	6	0	319.5	2.85

\* - at App State\*

YEAR	SP	MP	KILL	K/S	ERR	ATT	PCT	AST	A/S	SA	SA/S	SE	DIG	D/S	RE	BS	BA	TB	B/S	BE	BHE	PTS	PT/S
2025	53	14	71	1.34	46	235	.106	3	0.06	3	0.06	7	35	0.66	1	0	39	39	0.74	3	0	93.5	1.76

## SEASON HIGHS

Kills	10	Coastal Carolina	9/3/25
Attempts	28	Wofford	9/15/25
Hit. % (Min. 5 Kills)	.400	ETSU	8/29/25
Assists	1	3x, last vs. USC Upstate	9/19/25
Aces	1	3x, last vs. USC Upstate	9/19/25
Digs	5	Georgia	10/5/25
Solo Blocks	-	-	-
Block Assists	7	UNC	9/12/25
Total Blocks	7	UNC	9/12/25

## CAREER HIGHS

Kills	15	Troy	11/14/24
Attempts	40	Wofford	9/14/24
Hit. % (Min. 5 Kills)	-	-	-
Assists	3	Georgia State	11/1/24
Aces	4	2x, last vs. Georgia State	11/2/24
Digs	19	Georgia Southern	10/18/24
Solo Blocks	2	Northern Colorado	12/6/24
Block Assists	7	3x, last vs. UNC	9/12/25
Total Blocks	8	Wofford	9/14/24



# #24 KIMMIE THOMPSON

5-11 / SENIOR / SETTER / EXERCISE SCIENCE MAJOR / SIMPSONVILLE, S.C. (ST. JOSEPH'S CATHOLIC)

## SEASON HIGHLIGHTS

- 

## CAREER NOTABLES

- Played in 18 matches as a junior, working in as a back-row setter but predominantly as a serving specialist.
- Ranked second on the team in assists, averaging 4.86 per set in 2023. Finished with 20 or more assists in 12 of her 22 games played and led the team in assists eight times as a sophomore.

## CAREER STATISTICS

YEAR	SP	MP	KILL	K/S	ERR	ATT	PCT	AST	A/S	SA	SA/S	SE	DIG	D/S	RE	BS	BA	TB	B/S	BE	BHE	PTS	PT/S
2022	9	6	0	0.00	0	1	.000	19	2.11	1	0.11	1	9	1.00	0	0	0	0	0.00	0	1	1.0	0.11
2023	74	22	1	0.01	0	3	.333	360	4.86	11	0.15	19	103	1.39	0	0	0	0	0.00	0	8	12.0	0.16
2024	40	18	0	0.00	0	0	.000	53	1.33	3	0.08	10	29	0.73	0	0	0	0	0.00	0	0	3.0	0.08
2025	42	13	1	0.02	0	7	.143	159	3.79	9	0.21	20	55	1.31	0	1	1	2	0.05	0	1	11.5	0.29
	<b>165</b>	<b>59</b>	<b>2</b>	<b>0.01</b>	<b>0</b>	<b>11</b>	<b>.182</b>	<b>591</b>	<b>3.58</b>	<b>24</b>	<b>0.15</b>	<b>50</b>	<b>196</b>	<b>1.19</b>	<b>0</b>	<b>1</b>	<b>1</b>	<b>2</b>	<b>0.01</b>	<b>0</b>	<b>10</b>	<b>27.5</b>	<b>0.17</b>

## SEASON HIGHS

Kills	1	Coastal Carolina	9/3/25
Attempts	2	2x, last vs. Coastal	9/3/25
Hit. % (Min. 5 Kills)	-	-	-
Assists	28	Coastal Carolina	9/3/25
Aces	2	3x, last at Kentucky	9/24/25
Digs	10	2x, last vs. Coastal	9/3/25
Solo Blocks	1	Florida State	9/6/25
Block Assists	1	Clemson	8/31/25
Total Blocks	1	2x, last vs. Florida State	9/6/25

## CAREER HIGHS

Kills	1	Florida	11/22/23
Attempts	1	4x, last at Florida	11/22/23
Hit. % (Min. 5 Kills)	-	-	-
Assists	33	Auburn	10/8/23
Aces	2	5x, last vs. Coastal	9/3/25
Digs	15	Auburn	10/8/23
Solo Blocks	1	Florida State	9/6/25
Block Assists	1	Clemson	8/31/25
Total Blocks	1	2x, last vs. Florida State	9/6/25

# GAMECOCK VOLLEYBALL TV SPOT CHART



**#0 VICTORIA HARRIS**  
SOPHOMORE | COLUMBIA, S.C.



**#1 PHOEBE REYES**  
JUNIOR | SAN FRANCISCO DE MACORIS,



**#2 VICTORIA HILL**  
FRESHMAN | OVIEDO, FLA.



**#4 LAIYA EBO**  
JUNIOR | WASHINGTON, D.C.



**#5 SYDNEY DAVIS**  
FRESHMAN | ORLANDO, FLA.



**#6 SYDNEY FLOYD**  
JUNIOR | MANHATTAN BEACH, CALIF.



**#7 LINA MERZ**  
FRESHMAN | DRESDEN, GERMANY



**#8 ANNE BRADLEY BING**  
FRESHMAN | GASTONIA, N.C.



**#9 AVA LEAHY**  
JUNIOR | CHARLOTTE, N.C.



**#10 SARAH JORDAN**  
SENIOR | LEESBURG, VA.



**#12 CLAIRE PAYNE**  
FRESHMAN | WAKARUSA, IND.



**#13 ALAYNA JOHNSON**  
SENIOR | KERSHAW, S.C.



**#14 KAIA PIXLER**  
FRESHMAN | PHOENIX, ARIZ.



**#15 NIA HALL**  
JUNIOR | LORAIN, OHIO



**#17 EMILY BEEKER**  
R-SENIOR | HENDERSONVILLE, N.C.



**#19 ELIZABETH MCELVEEN**  
JUNIOR | ROCK HILL, S.C.



**#23 ELISE MARCHAL**  
SOPHOMORE | KINGS MILL, OHIO



**#24 KIMMIE THOMPSON**  
SENIOR | SIMPSONVILLE, S.C.