

SOUTH CAROLINA WOMEN'S BASKETBALL



3 NCAA CHAMPIONSHIPS • 7 NCAA FINAL FOURS • 9 SEC CHAMPIONSHIPS • 9 SEC TOURNAMENT TITLES • 26 ALL-AMERICANS

Assoc. AD Comms/PR: Diana Koval | Office: 803.777.7977 | Cell: 314.369.6050 | Email: dkoval@mailbox.sc.edu
Web: www.GamecocksOnline.com | X: @GamecockWBB | Instagram: @GamecockWBB | TikTok: @GamecockWBB | Facebook: @GamecockWBB

GAME 4 • SPROUTS FARMERS MARKET THE REAL SC • NOV. 15, 2025 • LOS ANGELES • CRYPTO.COM ARENA

#2/2 GAMECOCKS
3-0

Head Coach: Dawn Staley
Record at SC: 478-110 (18th)
Career Record: 650-190 (26th)
Top Scorer: Joyce Edwards (18.3)
Top Rebounder: Madina Okot (9.0)



#8/10 SOUTHERN CAL
2-0

Head Coach: Lindsay Gottlieb
Record at USC: 95-26 (5th)
Career Record: 330-164 (16th)
Top Scorer: Londynn Jones (17.5)
Top Rebounder: Kara Dunn/Kennedy Smith (6.0)

SCHEDULE/RESULTS

Oct. 24	Anderson (Exh.)	W, 112-31
Oct. 30	vs. #11/11 N. Carolina (Exh.)	W, 91-82
Nov. 3	Grand Canyon (SECN+)	W, 94-54
Nov. 7	Bowling Green (SECN+)	W, 114-47
Nov. 11	Clemson (ESPN2)	65-37

The Real SC (Los Angeles)
Nov. 15 vs. #8/10 Southern Cal (FOX) 9 p.m.

Nov. 19 Winthrop (SECN) 7 p.m.
Nov. 23 Queens (SECN+) 2 p.m.

Players Era Championship (Las Vegas)
Nov. 26 vs. Duke 4:30 p.m.
Nov. 27 vs. UCLA/Texas 8/10:30 p.m.

ACC/SEC Challenge
Dec. 4 at Louisville (ESPN) 7 p.m.

Dec. 7	NC Central (SECN)	Noon
Dec. 14	Penn State (ESPN)	3:30 p.m.
Dec. 18	at USF (ESPN2)	7 p.m.
Dec. 20	at Florida Gulf Coast	2 p.m.
Dec. 28	Providence (SECN)	Noon
Jan. 1	Alabama* (SECN+)	2 p.m.
Jan. 4	at Florida* (SECN)	2 p.m.
Jan. 8	at Arkansas* (SECN+)	7:30 p.m.
Jan. 11	Georgia* (SECN)	2 p.m.
Jan. 15	Texas* (ESPN2)	7 p.m.
Jan. 18	at Coppin State (ESPN+)	Noon
Jan. 22	at Oklahoma* (ESPN)	7 p.m.
Jan. 25	Vanderbilt* (ESPN)	3 p.m.
Jan. 29	at Auburn* (SECN)	9 p.m.
Feb. 2	at Texas A&M* (ESPN2/U)	8 p.m.
Feb. 5	Mississippi State* (SECN)	6:30 p.m.
Feb. 8	Tennessee* (ABC)	3 p.m.
Feb. 14	at LSU* (ABC)	8:30 p.m.
Feb. 19	at Alabama* (SECN)	8:30 p.m.
Feb. 22	Ole Miss* (ESPN/2)	Noon
Feb. 26	Missouri* (SECN)	8 p.m.
Mar. 1	at Kentucky* (SECN+)	2 p.m.

Mar. 4-8 SEC Tournament (Greenville, SC)

* indicates SEC game
All times Eastern
TV outlet listed in parentheses (SECN is SEC Network; SECN+ is SEC Network online via the ESPN app).

THE SERIES

SC Record/Staley Era: 3-0 / 2-0
H: 1-0 A: 2-0 N: 0-0
Current Streak: W3
Last Meeting: W 70-61, 11/15/14 in Columbia

HOW TO FOLLOW

Watch: FOX (Aaron Goldsmith, Sarah Kustok)
Listen: 107.5 FM; on the SiriusXM app (Brad Muller)
Live Stats: StatBroadcast

GAMECOCK NOTABLES

- The Gamecock offense ranks seventh in the country with a .564 field goal percentage. Nine Gamecocks are shooting at least 50.0 percent from the field, including three who rank among the SEC's top 15 in field goal percentage. On the other side of the ball, South Carolina leads the nation in field goal percentage defense at .249.
- With 9.0 blocks per game, South Carolina is fourth in the nation in that stat and is blocking 26.0 percent of its opponents' 2-point attempts, which ranks second in the country (Her Hoop Stats).
- The Gamecocks rank sixth in the nation with a .564 3-point field goal percentage. The trio of starting guards – Raven and Tessa Johnson and Ta'Niya Latson – combine to shoot 48.1 percent from long range. Freshman guards Agot Makeer and Ayla McDowell are a combined 6-of-11 (.545) from outside the arc.
- The Gamecocks' top two scorers – Joyce Edwards and Ta'Niya Latson, respectively – are on every national player of the year watch list and have been effective on both sides of the ball early this season. Edwards is among the SEC's top 10 in scoring (5th, 18.3 ppg), field goal percentage (9th, .600) and blocks per game (4th, 2.33). The nation's top scorer in 2024-25, Latson is locking in defensively like never before in her career while also adding 16.3 points (14th in SEC) and 3.6 assists per game as she builds chemistry with her new team.
- Tessa Johnson's offseason commitment to her game and her physical presence is yielding numbers that are nearly double her career-high output of last season with 15.3 points, 4.7 rebounds and 3.0 assist per game.
- Four-year starting point guard Raven Johnson's leadership has driven the Gamecocks' success throughout her career and her early numbers this season rival her career-best in the undefeated 2023-24 campaign. Ranking fourth in the SEC in assists per game (6.7) and assist-to-turnover ratio (4.00), she is adding 8.0 points and 4.7 rebounds per game and shooting 50.0 percent from the field.
- Center Madina Okot's two double-doubles are the fifth-most in the NCAA this season and have come in the last two games. She is ninth in the SEC with 9.0 rebounds per game and has netted 12.3 points per game on 57.7 percent shooting. Okot was the SEC's most efficient scorer last season, hitting 64.9 percent from the field.

1.56

South Carolina is scoring 1.56 points per offensive rebound this season.

82.7

The Gamecocks have won 82.7 percent (24-5) of their games against top-10 foes over the last four seasons.

119

South Carolina's 119 consecutive AP Polls in the top 10 is the longest active streak and the eighth longest in the poll's history.

TALE OF THE TAPE

SOUTH CAROLINA	91.0	.564	.476	6.7	.754	16.3	46.0	+45.0	.249	.194	+17.3	18.7	+2.7	9.0	6.0
	Points	FG%	3FG%	3FGM per Game	FT%	FTM per Game	Scoring Def.	Scoring Margin	FG% Def.	3FG% Def.	Reb. Margin	Assist Avg.	TO Margin	Blocks Avg.	Steals Avg.
SOUTHERN CAL	78.0	.387	.300	7.5	.633	15.5	58.0	+20.0	.398	.269	+5.5	15.0	+12.5	5.0	11.0

TA'NIYA LATSON

5-8 • Sr. • G • Miami, FL

tuh-NYE-uh LAT-son

00



Last Gm: 12 pts, 4-8 FGs, 3 assts vs. Clemson
Efficient scorer and distributor, looking to further expand her game ... SEC top-15 in ppg, FT% ... 3x All-America, 3x All-ACC 1st Team.

2025-26	Career*	Career Highs
PPG 16.3	22.3	Pt: 40 at Va. Tech, 1/2/25*
APG 2.7	3.9	Rb: 11 vs. TTU, 11/29/24**
FG% .552	.450	Ast: 12 at Va., 2/6/25*
3FG% .400	.327	Stl: 8 vs. Presby, 12/15/22*
FT% .789	.840	3FG: 5 vs. Miami, 1/19/25*

MADDY McDANIEL

5-9 • So. • G • Upper Marlboro, Md.

1



Last Gm: 3 pts, 2 assts, 8 mins vs. GCU
Court vision, can get to the rim, makes good decisions ... played in 30 games last year, 3.0 A.T.O. ... McDonald's All-American ... #14 in 2024 Class.

2025-26	Career	Career Highs
PPG 3.0	3.1	Pt: 10 vs. Purdue, 11/30/24
RPG 0.0	0.8	Rb: 4 vs. USF, 12/15/24*
APG 2.0	1.7	Ast: 6 vs. ECU, 11/17/24
FG% .500	.500	Stl: 4 vs. ECU, 11/17/24
FT% .688	.688	3FG: 1 vs. GCU, 11/3/25*

TESSA JOHNSON

6-0 • Jr. • G • Albertville, MN

5



Last Gm: 13 pts, 3 assts, 2-4 3FGs vs. Clemson
Multi-level scoring threat, physical defender ... 19th in SEC in ppg ... SEC top-15 in FG%, 3FG%, 3s/gm ... 2024 NCAA Final Four All-Tournament Team.

2025-26	Career	Career Highs
PPG 15.3	7.8	Pt: 22 at Miss. St., 1/5/25
APG 3.0	1.4	Rb: 7 vs. BGSU, 11/7/25*
FG% .594	.472	A: 6 vs. TN Tech, 3/21/25*
3FG% .467	.433	Stl: 3 vs. Ala., 2/22/24*
FT% 1.000	.844	3FG: 4 at Miss. St., 1/5/25*

JOYCE EDWARDS

6-3 • So. • F • Camden, SC

8



Last Gm: 18 pts, 8 rebs, 3 blks vs. Clemson
Size, speed, skill and feel for the game ... SEC top-10 in ppg, FG%, bpg ... 2025 All-Amer., 1st-Team All-SEC ... 2025 FIBA AmeriCup gold.

2025-26	Career	Career Highs
PPG 18.3	13.1	Pt: 28 vs. Fla., 2/13/25
RPG 5.7	5.0	Rb: 12 at Vandy, 2/23/25
BPG 2.3	0.7	Blk: 3 vs. Clem., 11/11/25*
FG% .600	.536	Ast: 6 vs. Texas, 4/4/25
FT% .700	.772	Stl: 4 vs. NC St., 11/10/24

MADINA OKOT

6-6 • Sr. • C • Mumias, Kenya

mah-DEE-nuh oh-COAT

11



Last Gm: 12 pts, 12 rebs vs. Clemson
Size and strength inside, expanding shooting range ... SEC top-15 in rpg, FG%, bpg ... led SEC in FG% and 4th in rpg last season at Miss. State.

2025-26	Career*	Career Highs
PPG 12.3	11.4	Pt: 26 at UMES, 12/20/24*
RPG 9.0	9.5	Rb: 23 at Vandy, 2/13/25*
BPG 1.7	1.2	Blk: 4 vs. BGSU, 11/7/25**
FG% .577	.642	Ast: 3 at Fla., 2/26/25**
FT% .778	.642	Stl: 5 vs. Ala. St., 11/13/24*

ADHEL TAC

6-5 • So. • F • Grand Prairie, TX

uh-DELL TACK

15



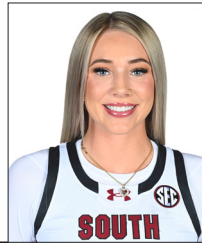
Last Gm: 3 rebs, 6 mins vs. Clemson
Interior presence, high motor ... growing strength and confidence after long injury recovery at end of high school career ... played in 23 games last season.

2025-26	Career	Career Highs
PPG 1.7	1.6	Pt: 9 at Mizzou, 1/2/25
RPG 3.7	1.8	Rb: 6 vs. GCU, 11/3/25*
BPG 0.7	0.2	Blk: 1 vs. GCU, 11/3/25*
FG% .500	.429	Ast: 1 vs. Ark., 2/20/25
FT% .333	.579	Stl: 1 vs. Texas, 4/4/25*

CHLOE KITTS

6-2 • Sr. • F • Oviedo, FL

21



Last Gm: Out for season, October ACL surgery
Tenacious; improved physical, mental strength ... in 2025 SEC Tourn and NCAA Regional MVP, All-American, team's top rebounder.

2024-25	Career	Career Highs
PPG 10.2	8.1	Pt: 25 vs. Vandy, 3/7/25
RPG 7.7	5.8	Rb: 14 vs. Mich., 11/4/24*
APG 1.9	1.5	Blk: 5 vs. Mizzou, 2/8/24
FG% .520	.523	Ast: 10 at Miss., 2/27/25
FT% .798	.734	Stl: 4 at Miss., 2/27/25

AYLA McDOWELL

6-1 • Fr. • G • Cypress, TX

EYE-luh

24



Last Gm: 4 mins vs. Clemson
Three-level scorer, great size and athleticism ... over 2,700 points in high school ... McDonald's All-American, #15 in 2025 Class ... Brazil National Team.

2025-26	Career	Career Highs
PPG 6.7	6.7	Pt: 11 vs. BGSU, 11/7/25
APG 0.3	0.3	Rb: 3 vs. BGSU, 11/7/25
FG% .600	.600	Ast: 1 vs. BGSU, 11/7/25
3FG% .500	.500	Stl: 2 vs. BGSU, 11/7/25
FT% .750	.750	3FG: 2 vs. BGSU, 11/7/25

RAVEN JOHNSON

5-9 • Sr. • G • Atlanta, GA

25



Last Gm: 2 pts, 2 assts vs. Clemson
Great instincts, good decisions ... 10th NCAA in apg (4th in SEC), 4th in SEC A.T.O. (4.00) ... 2024 All-SEC, 2025 SEC All-Defensive Team.

2025-26	Career	Career Highs
PPG 8.0	5.7	Pt: 18 v. SDSU, 11/20/23
RPG 4.7	4.1	Rb: 15 at Tenn., 2/15/24
APG 6.7	3.7	A: 17 v. Clems., 11/16/23
FG% .500	.396	Stl: 6 vs. Auburn, 2/2/25
FT% 1.00	.646	Blk: 2 v. Texas, 1/12/25*

MARYAM DAUDA

6-4 • Sr. • F • Bentonville, Ark.

MARE-ee-um DOW-duh

30



Last Gm: 2 pts, 7 rebs, 16 mins vs. Clemson
Keeps defenders off balance, great footwork inside ... growing confidence ... played in 34 last season ... career-high 10.1 ppg, 6.3 rpg in soph. year (Ark.).

2025-26	Career*	Career Highs
PPG 3.7	5.1	Pt: 22 at Tulsa, 3/21/24*
RPG 5.7	3.7	Rb: 13 v. Miss St., 1/11/24*
FG% .429	.429	Blk: 10 at Ala., 1/14/24*
3FG% .000	.293	Ast: 5 at Ala., 1/14/24
FT% .833	.755	Stl: 4 v. UGa, 1/7/24*

AGOT MAKEER

6-0 • Fr. • G • Thunder Bay, Ontario

uh-GOT muh-KEER

44



Last Gm: 6 pts, 2-3 FGs, 4 rebs vs. Clemson
Size, speed, versatility ... 11th in SEC in bpg (2.0) ... McDonald's All-American, No 6 in 2025 Class ... has played for Team Canada in U17 and U19 events.

2025-26	Career	Career Highs
PPG 7.7	7.7	Pt: 12 vs. BGSU, 11/7/25
APG 0.7	0.7	Rb: 3 vs. BGSU, 11/7/25
FG% .538	.538	Ast: 2 vs. GCU, 11/3/25
3FG% .571	.571	Stl: 1 vs. BGSU, 11/7/25
FT% .714	.714	Blk: 3 vs. GCU, 11/3/25

DAWN STALEY

At SC: 478-110 (18th season)

Career: 650-190 (26th season)

HC



- 3 National Championships, including 10th undefeated title season in NCAA history (2024)
- 7 Final Fours in last 10 NCAA Tournaments
- 9 SEC Regular-Season Championships
- 9 SEC Tournament Championships
- 9th in winning percentage (.774) among active NCAA Div. I coaches, 10th all-time
- 12 WNBA Draft picks since 2020 – more than any other program in that time

* indicates includes games at previous NCAA Div. I institution

* indicates has happened multiple times, most recent listed

QUICK FACTS

The University

Location: Columbia, S.C.

Founded: 1801

Enrollment: 40,000

Colors: Garnet (PMS 202C) and Black

Nickname: Gamecocks

Conference: Southeastern

University President: Michael Amiridis

Athletics Director: Jeremiah Donati

Facility: Colonial Life Arena (18,000)

Coaching Staff

Head Coach: Dawn Staley

Alma Mater: Virginia, 1992

Overall Record: 650-190 (26th season)

School Record: 478-110 (18th season)

Assoc. Head Coach, Alma Mater:

Lisa Boyer, Ithaca, 1979 (18th season)

Assistant Coaches, Alma Mater:

Jollette Law, Iowa, 1990 (9th season)

Wendale Farrow, E. Michigan, 2009 (1st season)

Mary Wooley, USC Aiken, 2002 (3rd season)

Khadjah Sessions, South Carolina, 2016 (3rd season)

Team Information

2024-25 Record: 35-4

Home: 16-1 Away: 8-2 Neutral: 11-1

SEC Record (Finish): 15-1 (T-1st)

Home: 8-0 Away: 7-1

Letterwinners Returning/Lost: 2/3

Starters Returning/Lost: 7/6

Program History

First Year of Women's Basketball: 1974-75

All-Time Record: 1,058-539 (52nd season)

All-Time SEC Record: 278-213 (35th season)

NCAA Appearances (Last): 21 (2025)

NCAA Tournament Record: 55-18

2025 NCAA Result: Runner-Up

WNIT Appearances (Last): 5 (2011)

WNIT Record: 6-4

Media Relations

Women's Basketball Contact: Diana Koval

Office: 803.777.7977

Cell: 314.369.6050

Email: dkoval@mailbox.sc.edu

Women's Basketball on Social Media:

Twitter: @GamecockWBB

Instagram: @GamecockWBB

Facebook: @GamecockWBB

TikTok: @GamecockWBB

Head Coach on Social Media

Twitter: @DawnStaley

Instagram: @Staley05

Athletics Department on the Web

Website: GamecocksOnline.com

Twitter: @GamecocksOnline

Instagram: @GamecocksOnline

Facebook: Facebook.com/GamecocksOnline

YouTube: YouTube.com/GamecocksOnline

CURRENT STREAKS

	Total	Home	Road	Neut.
Overall	W3	W7	W2	L1
SEC	W5	W47	W2	—
Non-Conference	W3	W6	L1	L1
Ranked Teams	L1	W1	L1	L1

The Staley Effect

Under Dawn Staley, South Carolina women's basketball had been a perennial national power since winning its first SEC title in 2013-14. A few of the highlights from that stretch.

- 5 straight NCAA Final Four appearances (2021-2025) is the longest active streak and the second-longest streak in tournament history.
- 3 National Championships are third most by a single program in tournament history.
- 10th undefeated National Championship season in NCAA history (2023-24)
- 84 AP No. 1 rankings are third-most by a program in the poll's history.
- 119 straight AP Top-10 rankings is the longest active streak – more than three times the next program
- 11 Gamecocks have earned All-America status at least once in their careers

The Southern Cal Series

The Gamecocks have won all three games in the series, including the two games in the Dawn Staley era. The two teams played a home-and-home series in 2013-14 and 2014-15, beginning in Los Angeles. The initial meeting was also in LA as part of the 1980 AIAW Satellite Tournament.

In the two modern-era meetings, South Carolina was ranked 17th and second, respectively. The Gamecocks topped the Trojans 70-50 on Nov. 24, 2013, and took their home game 70-61 on Nov. 15, 2014.

Neutral Stance

The Gamecocks are 180-96 (.652) all-time on a neutral court. South Carolina head coach Dawn Staley is 97-27 in games played at neutral sites (.782), including a 35-10 (.778) record in regular-season outings on neutral courts.

Ranked Readings

Against ranked teams, South Carolina is 132-71 (.650) in the Dawn Staley era (beginning 2008-09), and even that mark is skewed by the early seasons of her tenure. Since the start of the 2014-15 campaign, the Gamecocks are 117-32 (.785) against ranked teams, including a 47-5 (.904) mark since the start of the 2021-22 season.

Schedule Sketch

South Carolina's schedule continues to challenge and prepare the team for the postseason. This year's slate features 10 games against teams ranked in the current

2025-26 AWARDS

Maryam Dauda

Cheryl Miller Preseason Top 20 Watch List

Joyce Edwards

Preseason USA Today Second-Team All-America
USBWA Ann Meyers Drysdale Award Watch List
Naismith Trophy Watch List (preseason)
Wade Trophy Watch List (preseason)
Preseason All-SEC First Team (media, coaches)
Katrina McClain Preseason Top 20 Watch List

Raven Johnson

USBWA Ann Meyers Drysdale Award Watch List
Naismith Trophy Watch List (preseason)
Nancy Lieberman Preseason Top 20 Watch List

Ta'Niya Latson

Preseason AP All-America
Preseason USA Today First-Team All-America
USBWA Ann Meyers Drysdale Award Watch List
Naismith Trophy Watch List (preseason)
Wade Trophy Watch List (preseason)
Preseason All-SEC First Team (coaches)
Preseason All-SEC Second Team (media)
Ann Meyers Drysdale Preseason Top 20 Watch List

Madina Okot

Lisa Leslie Preseason Top 20 Watch List

Agot Makeer

Tarnika Catchings Watch List

top 25 – four at home, three on the road and three at neutral sites. Five of the 10 games are against teams in the preseason top 10.

The non-conference schedule is highlighted by four ranked matchups – vs. #8/10 Southern Cal (Nov. 15), vs. #15/11 Duke (Nov. 26) vs. #3/4 UCLA or #4/3 Texas (Nov. 27) and at #22/21 Louisville (Dec. 4).

Ranking Review

South Carolina is currently ranked No. 2 in both the AP Poll and the USA Today/WBCA Coaches' Poll.

It marks the Gamecocks' 119th consecutive entry in the AP top 10, beginning with the 2019-20 preseason poll. It is the longest active streak and the eighth longest in the

GAMECOCKS IN THE RANKINGS (thru games of 11/12)

Team	SEC	NCAA	Actual	Joyce Edwards	SEC	NCAA	Actual
Scoring Offense	5	23	91.0	Points per game	5	77	18.3
Scoring Defense	5	21	46.0	Blocks per game	4	41	2.3
Scoring Margin	3	16	+45.0	FG percentage	8	79	.600
Field Goal Percentage	2	7	.564				
Field Goal %age Def.	1	1	.249	Raven Johnson	SEC	NCAA	Actual
3-Point FG %age	2	6	.476	Assists per game	4	20	6.7
3-Point FG %age Def.	1	26	.194	Assist-to-turnover ratio	4	48	4.0
3-Point FG Made/Gm.	13	149	6.7				
Free Throw Percentage	4	76	.754	Tessa Johnson	SEC	NCAA	Actual
Free Throws Made/Gm.	3	60	16.3	Points per game	19	232	15.3
Rebounding Average	6	46	46.3				
Rebounding Margin	3	23	+17.3	Ta'Niya Latson	SEC	NCAA	Actual
Offensive Rebound Avg.	14	263	10.7	Points per game	14	167	16.3
Assists Per Game	6	47	18.7				
Steals Per Game	16	304	6.0	Madina Okot	SEC	NCAA	Actual
Turnover Margin	11	148	+2.7	Rebounds per game	12	101	9.0
Turnovers Per Game	4	46	12.3	Double-doubles	3	5	2
Assist-to-Turnover Ratio	3	32	1.5				
Blocked Shots Per Game	2	4	9.0				
Bench Points Per Game	12	213	20.7				
Home Attendance Avg.	1	1	16,291				

history of that poll (7th is 137, Baylor). Their 250 straight appearances in the AP Poll, dating back to Dec. 10, 2012, marks the second-longest active streak in the nation and is the seventh longest all-time (6th, Maryland, 251).

In the USA Today/WBCA Coaches' Poll, South Carolina has been in the top 10 since claiming the No. 10 spot in the 2019-20 preseason poll.

Statuesque Staley

In her 26th season as a head coach, Dawn Staley has a .774 (650-190) winning percentage, which ranks ninth in the nation among active head coaches and 10th all-time. With three national championships, she ranks fourth among head coaches all-time in NCAA titles.

Staley is one of just two women's basketball coaches to lead their teams to multiple 40-game win streaks in NCAA history with the Gamecocks' program-record 43-game streak (2023-24) ranking seventh longest in NCAA history. She is one of just 11 men's or women's basketball coaches to win at least three NCAA National Championships and the first Black head coach to win multiple titles. She is one of seven coaches to lead a team to at least four NCAA National Championship games.

Now in her 18th season with the Gamecocks, Staley is the program's all-time winningest coach (478) with a program-record 14 postseason appearances. She accounts for all seven of the Gamecocks' Final Four appearances and the only NCAA National Championships in program history. Her leadership on the court and in the community resulted in the City of Columbia commissioning a statue of Staley, which stands a short distance from the Gamecocks' home Colonial Life Arena.

Staley's nine SEC regular-season championships trail only Pat Summitt's 16 in league history, and her seven SEC Coach of the Year awards trail Summitt's league record by just one. Staley's 214 SEC regular-season wins are the most among active league coaches and third all-time – behind just Summitt (Tennessee, 306) and Andy Landers (Georgia, 273). She was the second-fastest to the 200-win mark in league history with her 255 games trailing Summitt's mark of 229. Staley's .793 SEC winning percentage (214-56) is second only to Summitt (.874) among coaches in the league at least five seasons. She

owns the SEC record for consecutive regular-season conference victories with a 57-game streak that began in the 2021-22 season and ended in 2024-25.

Balancing Act

South Carolina's active roster may only be 10 players, but the talent runs deep. Four Gamecocks average double-figure points this season with three more just behind with at least 6.7 points per game.

Nine Gamecocks are shooting at least 50.0 percent from the field, including three who rank among the SEC's top 15 in field goal percentage led by Joyce Edwards' 60.0 percent coming in ninth.

Four Gamecocks average at least 5.0 rebounds with starting guards Raven Johnson and Tessa Johnson just behind at 4.7 per game. Madina Okot's 9.0 rebounds per game rank 12th in the SEC.

Paint Production

South Carolina has long controlled the paint, and this season looks to be no different.

With 52.0 percent of their points coming in the paint, the Gamecocks are 19th in the nation with 47.3 paint points per game, according to CBBAnalytics.com, and are outscoring opponents in that space by 29.3 points per game. They are shooting 67.6 percent in the paint compared to opponents' 33.8 percent accuracy.

The paint production has been spread across the roster with guards accounting for 23.0 paint points per game – 43.4 percent of the total scoring in that space.

Block Party

The Gamecocks have been a premier shot blocking program since their first national championship in 2017. They ranked in the top 15 in blocks per game that season and have only climbed higher in the eight subsequent seasons, including four years leading the nation in the stat and twice coming in second. Beyond the number of blocks, the team's block percentage has led the nation three seasons.

So far this season, South Carolina has blocked 26.0 percent of its opponents' two-point attempts, which ranks second in the nation according to Her Hoop Stats. The Gamecocks' 9.0 blocks per game, which rank fourth in the nation, include seven players with at least two blocks and three with at least five.

Joyce Edwards leads the way with 2.3 per game, which ranks fourth in the SEC, followed by Madina Okot and Agot Makeer coming in 11th in the league with 1.7 per game.

First Watch

Gamecocks have dominated the many national award watch lists that are announced each preseason.

South Carolina is one of three schools with a player on each of the Naismith Hall of Fame Women's Starting Five watch lists.

Three Gamecocks – Joyce Edwards, Raven Johnson, Ta'Niya Latson – are on the watch lists for the Naismith Women's Player of the Year and the USBWA's Ann Meyers Drysdale Player of the Year award. South Carolina is one of two schools with three players on both lists.

Edwards and Latson are also among the 20 players on the Wade Trophy Watch List, which is the WBCA's national player of the year award.

Latson drew preseason All-America honors from both the Associated Press and USA Today. Edwards earned a spot on the USA Today Preseason All-America Second Team.

The pair was also ranked on ESPN's list of the top 25

NATIONAL RANKINGS

Associated Press Poll (Nov. 10)

1. UConn	2-0
2. South Carolina	2-0
3. UCLA	2-0
4. Texas	2-0
5. LSU	3-0
6. Oklahoma	1-0
7. Baylor	2-0
8. Southern Cal	2-0
9. Maryland	3-0
10. NC State	1-1
11. North Carolina	2-0
12. Tennessee	2-1
13. Ole Miss	2-0
14. Michigan	2-0
15. Duke	1-1
16. Iowa State	3-0
17. TCU	2-0
18. Notre Dame	2-0
19. Vanderbilt	1-0
20. Oklahoma State	4-0
21. Iowa	2-0
22. Louisville	1-1
23. Kentucky	3-0
24. Michigan State	2-0
25. Washington	1-0

USA Today/WBCA Coaches' Poll (Nov. 11)

1. UConn	2-0
2. South Carolina	2-0
4. Texas	3-0
3. UCLA	3-0
5. LSU	3-0
6. Oklahoma	1-1
9. Maryland	3-0
11. North Carolina	2-0
10. NC State	1-1
8. Southern Cal	2-0
15. Duke	1-1
12. Tennessee	2-1
17. TCU	2-0
7. Baylor	2-0
14. Michigan	2-0
13. Ole Miss	2-0
18. Notre Dame	2-0
16. Iowa State	3-0
19. Vanderbilt	2-0
23. Kentucky	3-0
22. Louisville	1-1
20. Oklahoma State	4-0
21. Iowa	2-0
24. Michigan State	2-0
25. Ohio State	1-0

players in the NCAA this season. Latson came in at #7 with Edwards close behind at #11, making South Carolina one of two programs with multiple players in the first 11 places.

Agot Makeer is on the list for the Tamika Catchings Award, the USBWA's National Freshman of the Year.

That's So Raven

Senior point guard Raven Johnson has been at the tip of the spear for the Gamecocks on both sides of the ball and has led the team to nothing but winning.

Now in her fourth full season, South Carolina is 110-5 with her in the lineup (missed one game each in the 2022-

THE STALEY ERA

Wins

30-Win Seasons	8
25-Win Seasons.....	13
20-Win Seasons.....	14
Winning Seasons.....	15

National Rankings

Weeks in the AP Top 25	255
Weeks in the AP Top 10	210
Weeks in the AP Top 3	135
Weeks at AP No. 1	84

Postseason

NCAA Tournament Appearances.....	13
NCAA Sweet 16s.....	12
NCAA Final Fours	7
National Championships	3

In the SEC

Regular-Season Championships.....	9
Regular-Season Top 3 Finishes.....	13
Tournament Championships	9

GAMECOCKS IN 2024-25 NATIONAL POLLS

Poll	Pre	11/10	11/17	11/24	12/1	12/8	12/15	12/22	12/29	1/5	1/12	1/19	1/26	2/2	2/9	2/16	2/23	3/2	3/9	3/16
Associated Press	2	2																		
Coaches	2	2																		

23 and 2023-24 seasons). That stretch features three trips to the Final Four, including a National Championship (2024) and runner-up finish (2025), three SEC Regular-Season titles and three SEC Tournament championships in the three full seasons of her career.

Johnson is eighth in program history in career assists (430) and fifth in the category for SEC play (166). She owns three of the top seven single-season assist-to-turnover ratios in program history, including a program-record 3.33 mark in SEC play in 2024-25. Her current career 2.77 A:TO (430:155) is well ahead of the current program record of 2.55 by WNBA veteran Tyasha Harris (2017-20).

This season, Johnson is fourth in the SEC in assist-to-turnover ratio (4.0) and assists per game (6.7) with the later number ranking 20th in the nation. Her stat stuffing includes 8.0 points, 4.7 rebounds and 2.0 steals per game, and she is shooting 50.0 percent from the field, including 57.1 percent from 3-point range.

Let Us Re-Joyce

Sophomore forward Joyce Edwards announced her presence on the college stage last season as the Gamecocks' top scorer (12.7 ppg) with a team-high 16 games leading the team in points and five 20-point outings.

The production made her just the third freshman in program history to earn First-Team All-SEC honors, and she was an All-America honorable mention selection. Her 11.5 points and 8.0 rebounds per game in the Final Four yielded a spot on the All-Tournament Team.

This season, Edwards is on every national player of the year watch list and the Katrina McClain Power Forward of the Year list as well. She is living up to the predictions as her team-high 18.3 points per game rank fifth in the SEC and have come on 60.0 percent field goal shooting, which is eighth-

best in the league. Her 91.7 percent (11-of-12) accuracy against Bowling Green (Nov. 7) was the fourth-best shooting performance in Gamecock history and the best since Aliyah Boston's perfect 13-of-13 outing in Nov. 2021.

Edwards' season comes after a summer of representing the United States in both 3x3 and 5-on-5 competitions. After claiming a title at the FIBA 3x3 Nations League Americas Conference 2 event, she went on to average 9.9 points at the FIBA AmeriCup to rank among the top 15 scorers in the tournament and help the Americans to a gold medal.

It's T-Time

Junior guard Tessa Johnson is poised to shake off her "Tournament Tessa" moniker to bring "Trusted Tessa" out every time she steps on the court, and she is showing just that on both ends of the floor.

Johnson's 15.3 points per game are third on the team and 19th in the SEC. She is among the league's top 15 in field goal percentage (11th, .594), 3-point percentage (14th, .467) and made 3s per game (11th, 2.33). Within games, she has shaken off challenges to get to the next play or the next way she can help propel the team forward.

Johnson turned in career-high numbers last season with 8.4 points and 1.5 assists per game. That production came after a freshman year that saw her shine in the most crucial moments of the team's undefeated run to the 2024 National Championship. She averaged 14.0 points on 58.8 percent shooting in the final weekend of the season, including a team-best 19 points in the title game, to earn a spot on the NCAA Final Four All-Tournament Team..

Transfer of Power

Dawn Staley added two elite senior transfers and both earned starting spots at the start of the season.

DOUBLE-DOUBLES

Raven Johnson (1)			
11/7	vs. Bowling Green	11 pts/11 assts	
Madina Okot (2)			
11/7	vs. Bowling Green	13 pts/11 rebs	
11/11	vs. Clemson	12 pts/12 rebs	

Guard Ta'Niya Latson (Florida State) was the nation's top scorer last season (25.2 ppg), choosing to join the Gamecocks to test herself, push herself to expand areas of her game she was not able to hone in the team circumstances of her first three seasons. The challenge has not cooled her offense as she averages 16.3 points, which ranks sixth in the SEC, on an efficient 55.2 percent shooting (13th in SEC). She is second on the team with 3.7 assists per game.

Madina Okot was the SEC's top percentage shooter last season (.649) at Mississippi State, and her current 57.7 percent accuracy stands 13th in the league. The 6-foot-6 center has drawn praise from her head coach on her strength and a challenge to impose her will, her dominance every time she steps on the court. After an average season opener, Okot responded in her second game as a Gamecock with back-to-back double-doubles in the next two games.

Okot's 9.0 rebounds per game are 12th in the SEC, and her 1.7 blocks per outing are 11th.

Freshman Findings

South Carolina freshman guards Agot Makeer (#6 in the 2025 Class) and Ayla McDowell (#15 in the 2025 Class) are both McDonald's All-Americans who represented their

GAMES LED TEAM IN...

Scoring	2025-26	Career	Record	Rebounding	2025-26	Career	Record	Assists	2025-26	Career	Record
Joyce Edwards	2	18	16-2	Madina Okot	2	26*	17-9*	Raven Johnson	2	55	54-1
Ta'Niya Latson	1	69*	50-19	Raven Johnson	1	11	10-1	Ta'Niya Latson	1	50*	33-17*
Chloe Kitts	0	10	10-0	Chloe Kitts	0	28	26-2	Tessa Johnson	1	6	6-0
Madina Okot	0	8*	7-1*	Joyce Edwards	0	6	5-1	Chloe Kitts	0	8	8-0
Tessa Johnson	0	5	5-0	Ta'Niya Latson	0	6*	5-1*	Maddy McDaniel	0	5	4-1
Maryam Dauda	0	5*	1-4	Maryam Dauda	0	5*	2-3	Joyce Edwards	0	1	1-0

* indicates includes games at previous NCAA Div. I program

MISCELLANEOUS STATS

Triple-Double	2025-26	Career	Record	10+ Points	2025-26	Career	Record	10+ Assists	2025-26	Career	Record
Chloe Kitts	0	1	1-0	Ta'Niya Latson	3	89*	63-26*	Raven Johnson	1	2	2-0
Ta'Niya Latson	0	1*	1-0*	Joyce Edwards	3	30	28-2	Ta'Niya Latson	0	4*	4-0*
Double-Doubles	2025-26	Career	Record	Tessa Johnson	3	28	26-1	Chloe Kitts	0	1	1-0
Madina Okot	2	14*	12-2*	Raven Johnson	2	24	23-1	5+ Assists	2025-26	Career	Record
Chloe Kitts	0	17	17-0	Madina Okot	3	25*	21-4*	Raven Johnson	2	39	39-0
Ta'Niya Latson	0	5*	5-0*	Agot Makeer	1	1	1-0	Ta'Niya Latson	0	35*	27-8*
Joyce Edwards	0	4	4-0	Ayla McDowell	1	1	1-0	Tessa Johnson	0	5	5-0
Maryam Dauda	0	2*	1-1	Chloe Kitts	0	43	43-0	Chloe Kitts	0	5	5-0
Raven Johnson	0	1	1-0	Maryam Dauda	0	22*	12-10	Maddy McDaniel	0	2	2-0
				Maddy McDaniel	0	1	1-0	Joyce Edwards	0	1	1-0
40+ Points	2025-26	Career	Record	20+ Rebounds	2025-26	Career	Record	5+ Blocks	2025-26	Career	Record
Ta'Niya Latson	0	1*	1-0*	Madina Okot	0	1*	1-0*	Maryam Dauda	0	1*	1-0
30+ Points	2025-26	Career	Record	10+ Rebounds	2025-26	Career	Record	5+ Steals	2025-26	Career	Record
Ta'Niya Latson	0	20*	17-3*	Madina Okot	2	19*	14-5*	Raven Johnson	0	6	6-0
20+ Points	2025-26	Career	Record	Chloe Kitts	0	21	21-0				
Ta'Niya Latson	1	63*	48-15*	Maryam Dauda	0	5*	4-1				
Joyce Edwards	1	6	6-0	Joyce Edwards	0	4	4-0				
Chloe Kitts	0	4	4-0	Raven Johnson	0	3	3-0				
Madina Okot	0	2*	2-0*	Ta'Niya Latson	0	3*	3-0*				
Maryam Dauda	0	1*	0-1								
Tessa Johnson	0	1	1-0								

* indicates includes games at previous NCAA Div. I program

home countries in international competition this summer.

After leading Montverde Academy to a runner-up finish at the Chipotle High School National Championships, Makeer, suited up for Canada at the FIBA U19 World Cup, helping it to a fourth-place finish with 10.3 points, including 46.2 percent 3-point shooting, and 4.9 rebounds per game.

The long, lithe Makeer is adapting well to college, averaging 7.7 points on 53.8 percent shooting, and her 1.7 blocks per game are 11th in the SEC.

McDowell amassed over 2,700 career points in high school before wearing her Brazil jersey at both the FIBA AmeriCup and the FIBA U19 World Cup over the summer. For the U19 team, she was the top scorer with a 16.8 scoring average while averaging 4.5 rebounds and 2.7 steals.

That experience and versatility has translated to her college game with McDowell averaging 6.7 points on 60.0 percent shooting, and she is second on the team with 1.0 steals per game.

Everybody's All-American

The Gamecocks' 11-woman roster includes eight McDonald's All-Americans – Maryam Dauda, Joyce Edwards, Raven Johnson, Tessa Johnson, Ta'Niya Latson, Agot Makeer, Maddy McDaniel and Ayla McDowell.

At South Carolina, Staley has coached 29 McDonald's All-Americans, including 22 who signed as freshmen.

What's Next

Just as the 2025-26 season began, event organizers were already releasing plans for the Gamecocks' 2026-27 season. South Carolina will be making its second appearance at all four events.

The Gamecocks will return to Paris for Oui Play 2026, facing Maryland in the season opener on Nov. 2. The return game of the Sprouts Farmers Market The Real SC game is set for Bon Secours Wellness Arena in Greenville, S.C., on Nov. 15. The Gamecocks are slated to take on UConn in the 2026 Basketball Hall of Fame Women's Showcase on Nov. 24. And the Charlotte Sports Foundation announced South Carolina's three-year commitment to the Ally Tipoff with games against North Carolina (2026), UConn (2027) and NC State (2028).

Who's Next

Head coach Dawn Staley signed a pair of top-20 players in the early signing period in forwards Kelsi Andrews and Kaeli Wynn. Both are on the Naismith Trophy Girls' High

TEAM SPECIALTY STATS

		Pts. in Paint	Pts. Off TOs	2nd Chance Pts	Fast Break Pts
11/3	GCU	40-18	22-10	14-15	32-2
11/7	BGSU	66-18	21-13	20-4	37-2
11/11	Clem.	36-18	11-13	16-2	7-3
Season Avg.		47.3-18.0	18.0-12.0	16.7-7.0	25.3-2.3

STARTERS VS. BENCH

		SC Starters	Opp. Starters	SC Bench	Opp. Bench
11/3	GCU	75	34	19	20
11/7	BGSU	79	25	35	22
11/11	Clem.	57	28	8	9
Season Avg.		70.3	29.0	20.7	17.0

2025-26 SCORING DIFFERENTIALS

All Games

Largest lead in a win	by 68 (110-42), 4th-3:31, vs. Bowling Green, 11/7
Largest deficit overcome to win	by 2 (0-2), 1st-9:21, vs. Bowling Green, 11/7
Best Scoring Run	16 points, 4th-3:31, vs. Bowling Green, 11/7
Best Scoring Run Against	8 points, 3rd-3:30, by Clemson, 11/11
Most Lead Changes	1 vs. Bowling Green, 11/7
Most Times Tied	1 vs. Bowling Green, 11/7

School Player of the Year watch list, released in November.

The 6-foot-3 Andrews is the #18 player in the Class of 2026 after helping lead IMG Academy to a high school national championship in 2025 with a 12-point, 13-rebound performance in the title game. She has also helped the U.S. to gold medals in the 2024 FIBA U17 World Cup and the 2023 FIBA U16 Americas Championship.

Wynn is the #17 player in the 2026 Class, standing 6-foot-2 and coming from basketball coach parents. She was a first-team all-state selection as a junior, averaging 17 points, 7.1 rebounds and 2.7 assists at Mater Dei High School, which was ranked No. 1 in the nation throughout the season.

WNBA Pipeline

Dawn Staley's status as a dream merchant is most evident by the steady stream of Gamecocks being drafted into and enjoying lengthy careers in the WNBA. Since her first Gamecock was drafted in 2015, she has seen 18 have their name called on draft night – the second-most by a program in that time.

Staley's numbers have skyrocketed since 2020 with an NCAA-best 12 draft picks since then, including a best-in-the-nation six first-round selections in that time.

In proof Staley sends players to the league ready, six Gamecocks have earned All-Rookie Team honors, including three WNBA Rookies of the Year – Allisha Gray (2017), A'ja Wilson (2018), Aliyah Boston (2023).

Great Gamecock Fans

South Carolina fans have led the nation in average attendance for the last 11 seasons, although the NCAA does not officially recognize the COVID-limited attendance in the 2020-21 season. The Gamecocks are on track to continue that streak after selling out of season tickets for the second time in as many seasons and opening the 2025-26 slate by hosting the three highest-attended games of the season so far.

The Gamecocks have had at least one sellout of their 18,000-seat Colonial Life Arena for eight straight seasons (excluding COVID-limited 2020-21 season) dating back to the first ever sellout of 18,000 on Feb. 8, 2016. There have been at least five sellouts in each of the last two seasons.

South Carolina's attendance average of 16,437 in 2024-25 is the second-highest in the history of the NCAA, narrowly trailing Tennessee's 1998-99 average of 16,565. That mark included a program-record seven sellouts.

SEASON THEME: BEYOND MEASURE

Each year Dawn Staley chooses a theme for the team and fans to center their season around, and it often reflects not just the state of South Carolina women's basketball, but that of the game overall.

The Gamecocks' 2025-26 season theme is Beyond Measure, which centers on the value of the whole person or group beyond the commonly measured scale. A player's value to the team is not measured solely by her statline but also by a myriad of other ways she elevates her team. Championships and awards are not valued because they yield a trophy but also because they lift up a university, a city, a state. The value of the FAMS who support the team around the country is more than the value of ticket sales, but it is in the way they form a united community that supersedes all their difference.

More broadly, Beyond Measure is a reminder that the ceiling of the team and its players – and that of women's basketball as a sport – will always shatter any limitations others may place on it.

2025-26 ROSTER

No.	Name	Pos.	Ht.	Yr.	Hometown/Last School
00	Ta'Niya Latson	G	5-8	Sr.	Miami, Fla./Florida State
1	Maddy McDaniel	G	5-9	So.	Upper Marlboro, Md./Bishop McNamara
5	Tessa Johnson	G	6-0	Jr.	Albertville, Minn./Saint Michael Albertville
8	Joyce Edwards	F	6-3	So.	Camden, S.C./Camden
11	Madina Okot	C	6-6	Sr.	Mumias, Kenya / Mississippi State
15	Adhel Tac	F	6-5	So.	Grand Prairie, Texas/South Grand Prairie
21	Chloe Kitts	F	6-2	Sr.	Oviedo, Fla./DME Academy
24	Ayla McDowell	G	6-1	Fr.	Cypress, Texas/Cypress Springs
25	Raven Johnson	G	5-9	Sr.	Atlanta, Ga./Westlake
30	Maryam Dauda	F	6-4	Sr.	Bentonville, Ark./Arkansas
44	Agot Makeer	G	6-0	Fr.	Thunder Bay, Ontario / Montverde Academy (FL)

Head Coach: Dawn Staley

Assoc. Head Coach: Lisa Boyer

Assistant Coaches: Jollette Law, Wendale Farrow, Mary Wooley, Khadijah Sessions

Sports Performance Coach: Molly Binetti; **Athletic Trainer:** Craig Oates

2025-26 TEAM HIGH / LOW

South Carolina Highs	South Carolina Lows	Category	Opponent Lows	Opponent Highs
114 vs. Bowling Green, 11/7	65 vs. Clemson, 11/11	Points in Game	37, Clemson, 11/11	54, Grand Canyon, 11/3
60 vs. Grand Canyon (1st), 11/3	30 vs. Clemson (2nd), 11/11	Points in a Half	13, Clemson (2nd), 11/11	31, Grand Canyon (1st), 11/3
31 vs. Bowling Green (3rd), 11/7	10 vs. Clemson (3rd), 11/11	Points in a Quarter	2, Clemson (4th), 11/11	21, Grand Canyon (2nd), 11/3
31 vs. Grand Canyon (2nd), 11/3				
42 vs. Bowling Green, 11/7	26 vs. Clemson, 11/11	Field Goals Made	14, Clemson, 11/11	18, Bowling Green, 11/7
66 vs. Bowling Green, 11/7	57 vs. Grand Canyon, 11/3	Field Goal Attempts	61, Clemson, 11/11	74, Bowling Green, 11/7
.636 (42-66) vs. BGSU, 11/7	.444 (26-58) vs. Clemson, 11/11	FG Percentage	.230 (14-61), Clemson, 11/11	.274 (17-62), GCU, 11/3
9 vs. Grand Canyon, 11/3	5 vs. Clemson, 11/11	3-Point FG Made	5, Clemson, 11/11	7, Grand Canyon, 11/3
19 vs. Grand Canyon, 11/3	9 vs. Clemson, 11/11	3-Point FG Attempts	33, Clemson, 11/11	34, Grand Canyon, 11/3
.556 (5-9) vs. Clemson, 11/11	.429 (6-14) vs. BGSU, 11/7	3-Point FG Percentage	.152 (5-33), Clemson, 11/11	.231 (6-26), BGSU, 11/7
24 vs. Bowling Green, 11/7	8 vs. Clemson, 11/11	Free Throws Made	4, Clemson, 11/11	13, Grand Canyon, 11/3
30 vs. Bowling Green, 11/7	10 vs. Clemson, 11/11	Free Throw Attempts	4, Clemson, 11/11	17, Grand Canyon, 11/3
.800 (24-30) vs. BGSU, 11/7	.680 (17-25) vs. GCU, 11/3	FT Percentage	.765 (13-17), GCU, 11/3	1.00 (4-4), Clemson, 11/11
53 vs. Bowling Green, 11/7	38 vs. Grand Canyon, 11/3	Rebounds	25, Bowling Green, 11/7	31, Clemson, 11/11
				31, Grand Canyon, 11/3
26 vs. Bowling Green, 11/7	11 vs. Clemson, 11/11	Assists	6, Grand Canyon, 11/3	9, Clemson, 11/11
				9, Bowling Green, 11/7
9 vs. Bowling Green, 11/7	3 vs. Clemson, 11/11	Steals	3, Grand Canyon, 11/3	11, Bowling Green, 11/7
11 vs. Bowling Green, 11/7	6 vs. Grand Canyon, 11/3	Blocked Shots	1, Clemson, 11/11	3, Grand Canyon, 11/3
14 vs. Bowling Green, 11/7	11 vs. Grand Canyon, 11/3	Turnovers	10, Clemson, 11/11	18, Bowling Green, 11/7
21 vs. Grand Canyon, 11/3	9 vs. Bowling Green, 11/7	Fouls	14, Clemson, 11/11	26, Grand Canyon, 11/3

* indicates program record; ^ indicates Staley-era program record

2025-26 INDIVIDUAL SUPERLATIVES

Category	South Carolina	Opponent
Points in Game	24 by Joyce Edwards vs. Bowling Green, 11/7	16 by Ale'jah Douglas, Grand Canyon, 11/3
Points in a Half	14 by Joyce Edwards vs. Bowling Green (2nd), 11/7	13 by Chloe Mann, Grand Canyon (1st), 11/3
Points in a Quarter	10 by Tessa Johnson vs. Grand Canyon (2nd), 11/3	13 by Chloe Mann, Grand Canyon (2nd), 11/3
Field Goals Made	11 by Joyce Edwards vs. Bowling Green, 11/7	5 by Anisa Jeffries, Grand Canyon, 11/3
Field Goal Attempts	17 by Joyce Edwards vs. Clemson, 11/11	15 by Paige Kohler, Bowling Green, 11/7
		15 by Johnnea Donahue, Bowling Green, 11/7
FG Percentage (min 5 FGM)	.917 (11-12) by Joyce Edwards vs. Bowling Green, 11/7	.500 (5-10) by Anisa Jeffries, Grand Canyon, 11/3
3-Point FG Made	3 by Raven Johnson vs. Grand Canyon, 11/3	3 by Ale'jah Douglas, Grand Canyon, 11/3
	3 by Tessa Johnson vs. Grand Canyon, 11/3	3 by Chloe Mann, Grand Canyon, 11/3
3-Point FG Attempts	6 by Tessa Johnson vs. Grand Canyon, 11/3	8 by Rusne Augustinaite, Clemson, 11/11
		8 by Chloe Mann, Grand Canyon, 11/3
3FG Percentage (min 3 FGM)	.600 (3-5) by Raven Johnson vs. Grand Canyon, 11/3	.500 (3-6) by Ale'jah Douglas, Grand Canyon, 11/3
Free Throws Made	7 by Ta'Niya Latson vs. Bowling Green, 11/7	5 by Ale'jah Douglas, Grand Canyon, 11/3
Free Throw Attempts	8 by Ta'Niya Latson vs. Grand Canyon, 11/3	6 by Ale'jah Douglas, Grand Canyon, 11/3
FT Percentage (min 5 FGM)	1.00 (7-7) by Ta'Niya Latson vs. Bowling Green, 11/7	.833 (5-6) Ale'jah Douglas, Grand Canyon, 11/3
Rebounds	12 by Madina Okot vs. Clemson, 11/11	8 by Demeara Hinds, Clemson, 11/11
Assists	11 by Raven Johnson vs. Bowling Green, 11/7	5 by Paige Kohler, Bowling Green, 11/7
Steals	3 by Raven Johnson vs. Bowling Green, 11/7	5 by Johnnea Donahue, Bowling Green, 11/7
	3 by Raven Johnson vs. Grand Canyon, 11/3	
Blocked Shots	4 by Madina Okot vs. Bowling Green, 11/7	1 by six players
Turnovers	5 by Tessa Johnson vs. Bowling Green, 11/7	4 by Johnnea Donahue, Bowling Green, 11/7

* indicates program record

^ indicates Staley-era program record

THE LAST TIME...

INDIVIDUAL

Scored 50 Points

South Carolina 51, Jocelyn Penn vs. Stetson, 1/4/03
Opponent Never

Scored 40 Points

South Carolina 51, Jocelyn Penn vs. Stetson, 1/4/03
Opponent 41, Caitlyn Clark, Iowa, 3/31/23

Scored 30 Points

South Carolina 31, Zia Cooke at Georgia, 1/2/23
Opponent 31, DeYona Gaston, Auburn, 2/2/25

Grabbed 20 Rebounds

South Carolina 20, Ashlyn Watkins vs. NC State, 4/5/24
Opponent 24, Teaira McCowan, at Mississippi State, 1/17/19

Grabbed 15 Rebounds

South Carolina 16, Kamilla Cardoso vs. Georgia, 2/18/24
Opponent 15 by Sarah Strong, vs. UConn, 4/6/25

Two Players with 20 or More Points

South Carolina Aliyah Boston 21/Zia Cooke 20 at Kentucky, 1/12/23
Opponent Azzi Fudd 24/Sarah Strong 24, vs. UConn, 4/6/25

Two Players with 10 or More Rebounds

South Carolina Ashlyn Watkins 20/Kamilla Cardoso 11 vs. NC State, 4/5/24
Opponent Angel Reese 13/Aneesah Morrow 10, vs. LSU, 3/10/24

Three or More Players with 10 or More Rebounds

South Carolina Raven Johnson 15/Kamilla Cardoso 10/Ashlyn Watkins 10 at Tennessee, 2/15/24
Opponent W. Rolle 12/J. Breland 10/L. Broomfield 10, vs. North Carolina, 12/19/10

Had 10 Assists

South Carolina 11, Raven Johnson vs. Bowling Green, 11/7/25
Opponent 10, Paige Bueckers, UConn, 2/16/25

Had Five Steals

South Carolina 6, Raven Johnson vs. Auburn, 2/2/25
Opponent 5, Dembele Mama, USF, 12/15/24

Had Five Blocked Shots

South Carolina 5, Sania Feagin at Ole Miss, 2/27/25
Opponent 5, Rita Igbokwe, vs. Ole Miss, 3/4/23

Had 20 Points and 20 Rebounds

South Carolina Aliyah Boston (28 pts/22 rebs) vs. N. Carolina, 3/25/22
Opponent Teaira McCowan (26 pts/24 rebs) at Mississippi State, 1/17/19

Had a Double-Double

South Carolina Madina Okot (12 pts/12 rebs) vs. Clemson, 11/11/25
Opponent Sarah Strong (24 pts/15 rebs), vs. UConn, 4/6/25

Two Players had a Double-Double

South Carolina Madina Okot (13 pts/11 rebs) / Raven Johnson (11 pts/11 assts) vs. Bowling Green, 11/7/25
Opponent Angel Reese (15 pts/13 rebs) / Aneesah Morrow (19 pts/10 rebs) vs. LSU, 3/10/24

Three or More Players had a Double-Double

South Carolina L. Amihere (11 pts/11 rebs) / A. Boston (11 pts/12 rebs) / L. Grissett (13 pts/10 rebs) / V. Saxton (19 pts/12 rebs) vs. Charleston, 11/25/20
Opponent Shakira Austin (10 pts/16 rebs) / Kaila Charles (17 pts/10 rebs) / Channise Lewis (10 pts/12 assts), Maryland, 11/18/18

Had a Triple-Double

South Carolina Chloe Kitts (16 pts/13 rebs/10 assts) at Ole Miss, 2/27/25
Opponent Never

TEAM

Scored 100 Points

South Carolina 114 vs. Bowling Green, 11/7/25
Opponent 103, Clemson, 11/21/03

Won by 50 or More Points

South Carolina 114-47 (67) vs. Bowling Green, 11/7/25
Opponent 97-39 (58) at UConn, 12/17/07

Won by 30-49 Points

South Carolina 94-54 (40) vs. Grand Canyon, 11/3/25
Opponent 66-34 (32), Georgia, 3/4/11

Overcame More Than 15-Point Deficit to Win

South Carolina 18 (16-34) 6:24 in 2nd qtr. vs. Stanford, 12/21/21*
Opponent 16 (21-37) 1:43 in 2nd qtr., at Tennessee, 2/18/21

Shot 65.0% or Better from the Field

South Carolina .672 (39-58) at Texas A&M, 1/21/24
Opponent Never

Shot 60.0-64.9% from the Field

South Carolina .636 (42-66) vs. Bowling Green, 11/7/25
Opponent .604 (29-48), Vanderbilt, 1/18/01

Shot 50.0-59.9% from the Field

South Carolina .596 (34-57) vs. Grand Canyon, 11/3/25
Opponent .500 (25-50), Auburn, 2/2/25

No Players in Double-Figure Points

South Carolina at Auburn, 1/19/12
Opponent at Georgia, 2/6/25

Five Players in Double-Figure Points

South Carolina vs. Grand Canyon, 11/3/25
Opponent vs. Indiana, 3/29/24

More Than Five Players in Double-Figure Points

South Carolina 7 vs. Bowling Green, 11/7/25
Opponent 5, at UCLA, 11/24/24

Faced AP Top-25 Opponent

Win 71-67 vs. No. 18 Maryland, 3/28/25
Loss 67-75 at No. 21 Tennessee, 2/18/21

Faced AP Top-10 Opponent

Win 54-50 vs. No. 7 Duke, 3/30/25
Loss 58-87 vs. No. 7 UConn, 2/16/25

Faced AP Top-5 Opponent

Win 74-57 vs. No. 5 Texas, 4/4/25
Loss 82-59 vs. No. 3 UConn, 4/6/25

Faced AP No. 1 Team

Win 64-45 vs. Texas, 3/9/25 (SEC Tournament championship)
Loss 68-93 vs. Baylor, 3/30/19 (NCAA Sweet 16)

Overtime Game

Win 64-57 at Ole Miss, 2/19/23
Loss 69-70 at Missouri, 12/30/21

Double-Overtime Game

Win 82-73 at Purdue, 12/16/18
Loss 92-94 at Clemson, 11/19/09

South Carolina Was Ranked (AP Poll)

No. 1 No. 1, 11/18/24
Top 5 No. 2, 11/10/25
Top 10 No. 6, 2/24/25
Top 25 No. 15, 3/19/19

* indicates program record

SOUTH CAROLINA SINGLE-QUARTER RECORDS

TEAM			INDIVIDUAL		
Scoring			Scoring		
Most	Points		Most	Points	
1. vs. Saint Peter's, 11/22/16, 1st qtr.	37		1. Kaela Davis at Auburn, 1/5/17, 1st qtr.	19	
2. vs. Florida, 2/13/25, 1st qtr.	36		2. A'ja Wilson vs. Notre Dame, 11/26/17, 4th qtr.	18	
at Kentucky, 1/12/23, 4th qtr.	36		3. Alexis Jennings at Florida, 2/17/19, 3rd qtr.	17	
vs. Alabama, 2/3/22, 1st qtr.	36		4. Zia Cooke at Georgia, 1/2/23, 4th qtr.	15	
at Vanderbilt, 1/12/20, 3rd qtr.	36		Aliyah Boston vs. Florida, 12/31/20, 2nd qtr.	15	
vs. Alabama State, 3rd qtr.	36		M. Herbert Harrigan vs. TX A&M, 3/1/20, 1st qtr.	15	
			Kaela Davis vs. Quinnipiac, 3/25/17, 3rd qtr.	15	
			Tina Roy vs. Arkansas, 1/3/16, 3rd qtr.	15	
Fewest	Points		Rebounding		
1. vs. App State, 12/5/18, 4th qtr.	5		Most	Rebs	
2. vs. Oregon State, 3/23/21, 4th qtr.	6		1. Kamilla Cardoso vs. Ole Miss, 3/4/23, 2nd qtr.	9	
vs. Indiana, 11/28/19, 4th qtr.	6		Aliyah Boston vs. N. Carolina, 3/25/22, 4th qtr.	9	
vs. St. John's, 11/25/17, 2nd qtr.	6		LeLe Grissett at Vanderbilt, 1/14/21, 4th qtr.	9	
vs. Stanford, 3/31/17, 2nd qtr.	6		Aliyah Boston vs. UConn, 2/10/20, 1st qtr.	9	
vs. UCLA, 12/18/16, 1st qtr.	6		Aliyah Boston vs. Arkansas, 1/9/20, 1st qtr.	9	
			Alaina Coates at Arkansas, 2/5/17, 1st qtr.	9	
			Alaina Coates at Georgia, 1/26/17, 2nd qtr.	9	
Fewest Allowed	Points		Rebounding		
1. vs. Texas, 3/30/21, 4th qtr.	0		Total	Rebs	
at Vanderbilt, 1/14/21, 2nd qtr.	0		1. vs. Arkansas, 3/7/20, 4th qtr.	28	
at Ole Miss, 1/30/20, 1st qtr.	0		2. vs. Charleston, 11/25/20, 3rd qtr.	22	
4. vs. Clemson, 11/11/25, 4th qtr.	2		3. vs. Howard, 3/18/22, 1st qtr.	21	
4 other times	2		4. vs Coastal Carolina, 12/21/22, 1st qtr.	20	
			vs. Hampton, 11/27/22, 3rd qtr.	20	
			vs. Howard, 3/18/22, 3rd qtr.	20	
			vs. Howard, 3/18/22, 2nd qtr.	20	
			vs. Charleston, 11/25/20, 1st qtr.	20	
			at Ohio State, 11/14/16, 1st qtr.	20	
Most Allowed	Points		Margin	Rebs	Margin
1. vs. Baylor, 12/2/18, 1st qtr.	32		1. vs. Hampton, 11/27/22, 3rd qtr.	20-2	+18
at Maryland, 11/13/17, 4th qtr.	32		vs. Charleston, 11/25/20, 3rd qtr.	22-4	+18
vs. Kentucky, 2/26/17, 4th qtr.	32		3. vs. Arkansas, 1/22/23, 2nd qtr.	19-2	+17
4. vs. Arkansas, 3/8/19, 3rd qtr.	30		4. vs. Arkansas, 1/22/23, 3rd qtr.	18-2	+16
vs. Connecticut, 3/26/18, 1st qtr.	30		vs. Howard, 3/18/22, 2nd qtr.	20-4	+16
vs. Syracuse, 3/25/16, 4th qtr.	30		vs. Arkansas, 3/7/20, 4th qtr.	21-5	+16
Margin of Difference					
Lead	Score	Margin			
1. vs. Alabama State, 11/5/19, 3rd qtr.	36-9	+37			
2. vs. App State, 11/17/19, 1st qtr.	35-3	+32			
3. vs. Charleston, 11/25/20, 3rd qtr.	34-8	+26			
vs. USC Upstate, 11/21/19, 3rd qtr.	33-7	+26			
vs. Arkansas, 1/3/16, 2nd qtr.	35-9	+26			
5. vs. Saint Peter's, 11/22/16, 1st qtr.	37-12	+25			
Deficit	Score	Margin			
1. vs. UConn, 2/1/18, 2nd qtr.	8-29	-21			
2. at Tennessee, 2/15/18, 3rd qtr.	9-29	-20			
3. vs. Baylor, 12/2/18, 1st qtr.	13-32	-19			
at Mississippi State, 2/5/18, 4th qtr.	9-28	-19			
5. vs. Indiana, 11/28/19, 4th qtr.	6-24	-18			
vs. Connecticut, 3/26/18, 1st qtr.	12-30	-18			
Field Goals					
Made	FGM				
1. at Florida, 2/27/20, 1st qtr.	15				
vs. Saint Peter's, 11/22/16, 1st qtr.	15				
3. vs. Florida, 2/13/25, 1st qtr.	14				
vs. Coastal Carolina, 12/21/22, 1st qtr.	14				
vs. Alabama, 2/3/22, 1st qtr.	14				
vs. App State, 11/17/19, 1st qtr.	14				
vs. Notre Dame, 11/26/17, 4th qtr.	14				
vs. Arkansas, 1/3/16, 2nd qtr.	14				
Attempts	FGA				
1. vs. Arkansas, 3/7/20, 4th qtr.	28				
2. vs. Arkansas, 2/20/25, 3rd qtr.	25				
vs. Oklahoma, 1/19/25, 2nd qtr.	25				
vs. Purdue, 11/30/24, 1st qtr.	25				
vs. Howard, 3/18/22, 1st qtr.	25				
vs. Arkansas, 1/9/20, 3rd qtr.	25				



ALL-TIME SELLOUTS

18,478	Georgia, 2/18/24
18,167	UConn, 2/11/24
18,000	Kentucky, 3/2/25
18,000	UConn, 2/16/25
18,000	Auburn, 2/2/25
18,000	LSU, 1/24/25
18,000	Oklahoma, 1/19/25
18,000	Texas, 1/12/25
18,000	East Carolina, 11/17/24
18,000	Tennessee, 3/3/24
18,000	Ole Miss, 2/5/24
18,000	Vanderbilt, 1/28/24
18,000	Georgia, 2/26/23
18,000	LSU, 2/12/23
18,000	Tennessee, 2/20/22
18,000	Texas A&M, 3/1/20
18,000	UConn, 2/10/20
18,000	Mississippi State, 3/3/19
18,000	UConn, 2/1/18
18,000	Kentucky, 2/26/17
18,000	UConn, 2/8/16

YEAR-BY-YEAR RECORD

Year	Record	Pct.	Att. Avg.
2002-03	14-2	.875	3,244
2003-04	5-6	.455	1,828
2004-05	8-9	.471	1,764
2005-06	12-5	.706	1,455
2006-07	15-5	.750	1,845
2007-08	12-6	.667	1,802
2008-09	6-9	.400	2,793
2009-10	7-5	.583	3,442
2010-11	14-5	.737	2,996
2011-12	12-3	.800	3,139
2012-13	12-3	.800	4,082
2013-14	16-0	1.000	6,371
2014-15	16-0	1.000	12,293
2015-16	16-1	.941	14,364
2016-17	15-1	.938	12,277
2017-18	15-2	.882	13,239
2018-19	11-4	.733	11,542
2019-20	15-0	1.000	12,185
2020-21	10-1	.909	3,500*
2021-22	16-0	1.000	12,268
2022-23	17-0	1.000	12,942
2023-24	17-0	1.000	16,067
2024-25	16-1	.941	16,437
2025-26	3-0	1.000	16,125
Total	300-68	.815	7,794*
Staley Era	234-35	.870	10,025*

* 2020-21 attendance not counted in average or streaks due to COVID-19 restrictions

In women's basketball, Colonial Life Arena has become one of the most feared places to play as enormous crowds fill the building with passion for the Gamecocks.

The state of South Carolina has rallied around head coach Dawn Staley's program in unprecedented numbers as the Gamecocks have led the nation in average attendance in each of the last 10 seasons and boast 21 sellouts (18,000) in the last 10 seasons of full capacity arenas.

Colonial Life Arena is more than just the home of South Carolina men's and women's basketball, though. It is also a thriving entertainment venue that the city of Columbia and its surrounding metropolitan area are able to enjoy throughout the year.

Colonial Life Arena is the largest arena in the state of South Carolina with 18,000 seats, and the 10th-largest on-campus basketball facility in the nation. Located on the beautiful University of South Carolina campus, this one-of-a-kind facility features 41 suites, four entertainment suites, and the Frank McGuire Club, a full-service hospitality room that has a capacity of 300. The state-of-the-art facility also features plush seating, a technologically advanced sound system and a one-of-a-kind selection of unique concession foods that will delight fans of all ages.

In Summer 2017, a 12-display center-hung video board and ribbon boards were added to the arena bowl at a cost of \$4.2 million. The center-hung board features four convex-curved main displays that measure approximately 12' x 20' and can show any combination of live video, instant replays, statistics and game information, graphics and animations, and sponsorship messages.

The Arena has hosted numerous sold out shows, including Barnum and Bailey Circus, Paul McCartney, country superstars Kenny Chesney and Taylor Swift, WWE Wrestling, Kanye West and numerous other acts.

The largest building ever constructed at the University of South Carolina at 342,000 square feet, the Arena has an intimate double-deck design that puts every seat close to the action. The cantilever of the upper deck over the lower deck extends further than any other arena of its size with great sight lines.

Two spacious locker rooms for Gamecock men's and women's basketball include team meeting rooms, recruiting rooms, coaches locker rooms and an athletic training room.

COLONIAL LIFE ARENA NOTABLES

- 10-Time National Attendance Leader (2015-present)
- NCAA Tournament Host in 2015, 2016, 2017, 2018, 2022, 2023, 2024
- 142 consecutive regular-season games with at least 10,000 fans (Jan. 2, 2015)*
- 21 official sellouts (18,000) since 2015-16 season
- 6 undefeated seasons
- Longest home win streak – 71 games (12/17/20-2/13/25)

* 2020-21 attendance not counted in average or streaks due to COVID-19 regulation restrictions

"It is a beautiful thing to see unfold because a lot of people really didn't think it could get done. I tip my hat to Gamecock Nation for making this a wonderful place and creating a home court advantage that allows us to win close basketball games."

– South Carolina Head Coach Dawn Staley



Head Coach DAWN STALEY

18th Season at South Carolina
26th Season in Career

Since thrusting South Carolina into the national spotlight when she was hired in May 2008, Dawn Staley has made the Gamecocks a mainstay in the battle for SEC and national championships. The Naismith Memorial Basketball Hall of Fame inductee as a player is angling for another induction as a coach with her standing as one of five head coaches with at least three women's basketball National Championships and the only Black basketball head coach with multiple national titles, one of five head coaches to lead an undefeated team to a National Championship, and the first Black head coach of the USA Basketball Senior National Team.

In Staley's 17 seasons at the helm of the Gamecocks, highlights include:

- Three National Championships (2017, 2022, 2024)
- Seven NCAA Final Fours in the last 10 tournaments (2015, 2017, 2021, 2022, 2023, 2024, 2025)
- Ranking in the AP Top 25 every week since Dec. 10, 2012, the second-longest active streak in the nation and seventh-longest all-time (250)
- 38 straight weeks at No. 1 in the AP Poll, just the third program to go wire-to-wire in back-to-back seasons
- 86 total weeks at No. 1 in the AP Poll, the third-most in the history of that poll
- Eight 30-win seasons, including a program-record 38 wins in 2023-24
- Nine SEC regular-season championships (2014, 2015, 2016, 2017, 2020, 2022, 2023, 2024, 2025)
- Nine SEC Tournament titles (2015, 2016, 2017, 2018, 2020, 2021, 2023, 2024, 2025)
- SEC-record 57 consecutive league regular-season victories, which ranks sixth in NCAA history for conference win streaks
- Four top-two recruiting classes (#2 in 2024, #1 in 2021, #1 in 2019, #2 in 2014)
- 11 NCAA Attendance titles (2015, 2016, 2017, 2018, 2019, 2020, 2021*, 2022, 2023, 2024, 2025)
- 18 WNBA Draft selections, including 11 first-round and two overall No. 1 picks

While her coaching career is in full bloom, Staley is still recognized for her body of work as a one of the most decorated participants in United States women's basketball history. The Naismith Memorial Basketball Hall of Fame solidified that legacy with her enshrinement as part of the Class of 2013. The Phoenix Club of Philadelphia established the Dawn Staley Award recognizing the nation's top guard in women's Division I basketball in 2013 as well. Staley was inducted into the Women's Basketball Hall of Fame as part of the Class of 2012, and she was part of the FIBA Hall of Fame Class of 2025.

In her 26th season as a head coach, Staley has led her college teams to 15 25-win seasons, a total of 21 postseason appearances (two WNIT) and 210 weeks in the Associated Press top 10, including 86 in the No. 1 spot – the third most times in the top spot in the history of that poll. Her .774 winning percentage (650-190) ranks seventh in the nation among active head coaches with at least 15 years of experience and ninth all-time.

Also a force in USA Basketball, Staley was named the U.S. Women's National Team head coach for 2017-21, leading the U.S. to 2018 FIBA World Cup gold to earn USA National Coach of the Year honors that year, adding gold medals at the 2019 and 2021 FIBA AmeriCups and stretching the U.S. Olympic gold medal streak to seven straight at the 2020 Tokyo Olympic Games, for which she again earned Coach of the Year honors. Prior to that appointment, Staley led three other U.S. teams to gold medals – 2015 FIBA U19 World Championships, 2014 FIBA U18 Americas Championship, 2007 Pan Am Games – and served as an assistant on the Senior National Team 2006-08 and again 2014-16, during which the U.S. claimed gold in the 2014 FIBA World Championship and the 2008 and 2016 Olympics.

STALEY AT SOUTH CAROLINA YEAR-BY-YEAR

Year	School	Record	Conf. Rec.	Conf. Finish	Postseason
2008-09	South Carolina	10-18	2-12	11th	
2009-10	South Carolina	14-15	7-9	T-7th	
2010-11	South Carolina	18-15	8-8	T-5th	WNIT 2nd Round
2011-12	South Carolina	25-10	10-6	T-4th	NCAA Sweet 16
2012-13	South Carolina	25-8	11-5	T-4th	NCAA 2nd Round
2013-14	South Carolina	29-5	14-2	1st	NCAA Sweet 16
2014-15	South Carolina	34-3	15-1	T-1st	SEC Tourn. Champ./NCAA Final Four
2015-16	South Carolina	33-2	16-0	1st	SEC Tourn. Champ./NCAA Sweet 16
2016-17	South Carolina	33-4	14-2	1st	SEC Tourn. Champ./NCAA Champ.
2017-18	South Carolina	29-7	12-4	T-2nd	SEC Tourn. Champ./NCAA Elite Eight
2018-19	South Carolina	23-10	13-3	2nd	NCAA Sweet 16
2019-20	South Carolina	32-1	16-0	1st	SEC Tourn. Champ./NCAA canceled)
2020-21	South Carolina	26-5	14-2	2nd	SEC Tourn. Champ./NCAA Final Four
2021-22	South Carolina	35-2	15-1	1st	NCAA Champion
2022-23	South Carolina	36-1	16-0	1st	SEC Tourn. Champ./NCAA Final Four
2023-24	South Carolina	38-0	16-0	1st	SEC Tourn., Champ./NCAA Champ
2024-25	South Carolina	35-4	15-1	T-1st	SEC Tourn. Champ./NCAA Runner-Up
2025-26	South Carolina	3-0			
At Temple	8 seasons	172-80	99-25	3 A-10 Titles	4 A-10 Tourn. Titles, 6 NCAA appearances
At SC	18th season	478-110	214-56	9 SEC Titles	9 SEC Trn. Titles, 3 NCAA Titles
Career	26th season	650-190	313-81		

STALEY HIGHLIGHTS

Coaching Highlights

College

- 18 NCAA Tournament Appearances (12 at SC)
- 3x NCAA National Champion (2017, 2022, 2024)
- 7 30-Win Seasons
- 10 Regular-Season Conference Titles (SEC 2014, 2015, 2016, 2017, 2020, 2022, 2023, 2024, 2025; A-10 2008)
- 12 Conference Tournament Titles (SEC 2015, 2016, 2017, 2018, 2020, 2021, 2023, 2024; A-10 2002, 2004, 2005, 2006)
- 5-time National Coach of the Year (2014, 2020, 2022, 2023)
- 4-time WBCA Region Coach of the Year (Region 3 2014, 2015, 2016; Region 1 2005)
- 9x Conference Coach of the Year (SEC 2014, 2015, 2016, 2020, 2022, 2023, 2024; A-10 2004, 2005)

USA Basketball

- Senior National Team Head Coach (2017-21) – Tokyo Olympics gold (2020); FIBA AmeriCup gold (2021); co-National Coach of the Year (2021); FIBA AmeriCup gold (2019), FIBA World Cup gold (2018), National Coach of the Year (2018)
- Senior National Team Asst. Coach (2006-08, 2014-16) – Rio Olympics gold medal (2016), FIBA World Championship gold medal (2014), Beijing Olympics gold medal (2008), FIBA Americas Championship gold medal (2007), FIBA World Championship bronze medal (2006)
- U19 National Team Head Coach – FIBA U19 World Championship gold medal (2015), co-National Coach of the Year (2015)
- U18 National Team Head Coach – FIBA U18 Americas Championship gold medal (2014)
- Pan Am Games Head Coach – Gold medal (2007)

Playing Highlights

U.S. Professional – 11 seasons

- Five-time WNBA All-Star (2001, 2002, 2003, 2005, 2006)
- Two-time ABL All-Star (1997, 1998)
- WNBA All-Decade Team

USA Basketball

- Olympic gold medalist (1996, 2000, 2004)
- Flag bearer for U.S. in Olympic Games Opening Ceremony (2004)
- Two-time USA Basketball Female Athlete of the Year (1994, 2004)

College – Virginia (1989-92)

- Kodak All-America (1990, 1991, 1992)
- Honda-Broderick Cup Award for Collegiate Female Athlete of the Year (1991)
- Two-time ACC Player of the Year (1991, 1992)
- NCAA Tournament MOP (1991)

Other Notables

- FIBA Hall of Fame, Class of 2025
- Naismith Mem. Basketball Hall of Fame, Class of 2013
- Order of the Palmetto Recipient (2013)
- Women's Basketball Hall of Fame, Class of 2012
- Two-time Wanamaker Award (1997, 2005)
- Henry P. Iba Citizenship Award (2007)

At the helm of the Gamecocks over the last 17 seasons, Staley has been named National Coach of the Year five times (2014, 2020, 2022, 2023, 2024). Her 2020 unanimous selection made her the first former Naismith Player of the Year to earn the Naismith Coach of the Year award, and she became the first men's or women's coach to claim the award in three straight seasons 2022-24. She is a seven-time SEC Coach of the Year and was the 2012 BCA Female Coach of the Year. She is the only Gamecock basketball coach – men's or women's – to amass 300 victories at South Carolina and became the fastest coach to 200 wins in program history, needing just 277 games at South Carolina to reach the plateau. She is the program's all-time winningest coach with 478 wins, a .813 (478-110) winning percentage and a program-record 14 postseason appearances.

In the vaunted SEC, Staley's 214 league wins are the most among active league coaches and third all-time, trailing just Women's Basketball Hall of Fame Inductees Andy Landers (Georgia, 273) and Pat Summitt (Tennessee, 306). She was the second fastest to 200 league wins (255 games), trailing only Summitt at 229. Her .793 SEC winning percentage (214-56) is second only to Summitt (.874) in league history. Her Gamecocks are the only SEC program with multiple 16-0 seasons in league history, hitting that mark four times (2015-16, 2019-20, 2022-23, 2023-24). Staley's back-to-back SEC undefeated seasons helped the Gamecocks to an SEC-record 57-game win streak in league play, which ranks sixth in NCAA history for conference win streaks.

In addition to coaching two National Players of the Year, two National Defensive Players of the Year and a National Freshman of the Year, Staley has helped 13 Gamecocks collect 29 All-America selections, three to pick up seven SEC Player of the Year honors, four to earn SEC Defensive Player of the Year recognition a total of eight times, three to SEC 6th Player of the Year honors and six to capture SEC Freshman of the Year. She has coached 23 Gamecocks to All-SEC honors a combined 44 times, including 22 first-team selections. Since her first Gamecock was selected in the 2015 WNBA Draft, a total of 18 South Carolina have been chosen, which is the second-most of any program in that timeframe. Of those 18, 11 have been first-round picks, highlighted by two No. 1 overall picks since 2018. Three Gamecocks have been named WNBA Rookie of the Year and have amassed 13 All-Star selections. Aja Wilson went on to become a three-time WNBA MVP and two-time WNBA Defensive Player of the Year.



SOUTH CAROLINA DAWN STALEY ERA SINGLE-GAME RECORDS

Scoring

Most	Points
1. vs. Charleston, 11/25/20	119
2. vs. Bowling Green, 11/7/25	114
vs. Maryland, 11/12/23	114

Fewest

Fewest	Points
1. at Stanford, 11/26/10	32*
2. vs. Georgia, 3/4/11	34
3. vs. Mississippi State, 3/5/09	39

Fewest Allowed

Fewest Allowed	Points
1. vs. Mississippi Valley State, 11/24/23	19*
2. vs. Howard, 3/18/22	21
vs. South Carolina State, 12/14/11	21

Most Allowed

Most Allowed	Points
1. at Connecticut, 2/11/19	97
2. vs. Arkansas, 3/8/19	95
3. 3x, most recent, vs. Baylor, 12/2/18	94

Margin of Victory

Margin of Victory	Score	Margin
1. vs. Miss. Valley State, 11/24/23	101-19	+82
2. vs. Charleston, 11/25/20	119-38	+81
3. 3x, most recent, vs. Presby, 12/16/23	99-29	+70

Margin of Defeat

Margin of Defeat	Score	Margin
1. at Stanford, 11/26/10	32-70	-38
2. vs. Georgia, 3/4/11	34-66	-32
3. vs. Stanford, 12/19/08	47-78	-31

Field Goals

Made	FGM
1. vs. Clemson, 11/16/23	44
2. 4x, most recent, vs. Tenn. Tech, 3/21/25	43

Attempts

Attempts	FGA
1. vs. Clemson, 11/16/23	83
vs. Maryland, 11/12/23	83
3. 2x, most recent, vs. Arkansas, 2/20/25	82

Highest Percentage (Min. 24 FGM)

Highest Percentage	FGM-A	Pct
1. vs. Morgan State, 12/6/23	41-60	.683
2. at Texas A&M, 1/21/24	39-58	.672
3. vs. Tennessee Tech, 3/21/25	43-64	.672

Lowest Percentage

Lowest Percentage	FGM-A	Pct
1. at Stanford, 11/26/10	12-55	.218
2. vs. Georgia, 3/4/11	12-52	.231
3. at Florida, 1/20/13	15-64	.234

Lowest %age Allowed

Lowest %age Allowed	FGM-A	Pct
1. vs. Miss. Valley State, 11/24/23	8-67	.119*
2. vs. South Carolina State, 12/14/11	6-48	.125
3. vs. Howard, 3/18/22	8-54	.148

Highest %age Allowed (Min. 24 FGM)

Highest %age Allowed	FGM-A	Pct
1. vs. UConn, 3/26/18	37-63	.587
2. vs. UConn, 2/11/19	37-65	.569
3. 2x, most recent vs. UConn, 12/28/08	35-62	.565

3-Point Field Goals

Made	3FGM
1. vs. Minnesota, 12/11/16	16
2. vs. Temple, 12/21/18	15
3. 2x, most recent, vs. App. State, 12/5/18	14

Attempts

Attempts	3FGA
1. vs. Howard, 3/18/22	38
2. vs. Minnesota, 12/11/16	33
3. vs. Syracuse, 3/25/16	32

Percentage (Min. 10 3FGM)

Percentage	3FGM-A	Pct
1. vs. ETSU, 11/22/18	11-16	.688
2. vs. Tennessee Tech, 3/21/24	12-19	.632
3. vs. Quinnipiac, 3/25/17	10-16	.625

Free Throws

Made	FTM
1. vs. Savannah State, 12/14/14	34
vs. Oregon State, 3/25/14	34
3. 3x, most recent, vs. Missouri, 1/10/16	32

Attempts

Attempts	FTA
1. at Mississippi State, 1/6/13	50
2. vs. Savannah State, 12/28/13	48
3. 2x, most recent, vs. Charleston, 11/25/20	47

Percentage (Min. 26 FTM)	FTM-A	Pct
1. vs. Arkansas, 1/22/23	27-35	.818
2. vs. ETSU, 11/22/18	28-35	.800
vs. Hampton, 11/20/16	28-35	.800

Rebounding

Total	Rebs
1. vs. Arkansas, 1/22/23	74
2. vs. Clemson, 11/16/23	73
vs. Charleston, 11/25/20	73

Margin

Margin	Rebs	Margin
1. vs. Arkansas, 1/22/23	74-17	+57
2. vs. Hampton, 11/27/22	62-15	+47
3. vs. Clemson, 11/16/23	73-27	+46

Offensive

Offensive	Off. Rebs
1. vs. Arkansas, 1/22/23	32
2. vs. Tennessee, 2/20/22	31
3. 2x, most recent, vs. Purdue, 11/30/24	30

Turnovers

Fewest	TOs
1. vs. Purdue, 11/30/24	4
at Tennessee, 2/2/12	4
2. 10x, most recent, at Ole Miss, 1/4/18	5

Most

Most	TOs
1. at Wake Forest, 12/3/08	32
2. 3x, most recent, at Ole Miss, 2/25/16	29

Assists

Assists	
1. at Kentucky, 2/25/24	30
vs. Clemson, 11/16/23	30
vs. Maryland, 11/12/23	30

Steals

Steals	
1. at Alabama State, 11/11/18	22
2. 3x, most recent, vs. Alabama St., 11/10/17	21

Blocked Shots

Blocked Shots	
1. vs. Presbyterian, 12/16/23	17*
vs. Appalachian State, 11/17/19	17*
3. 5x, most recent, vs. South Dak. St., 11/20/23	16

2025-26 BOX SCORES



Official Basketball Box Score - Final
Grand Canyon at South Carolina
 11/03/25 Colonial Life Arena, Columbia
 2025-26 Women's Basketball

Game Time: 7:00 PM
 Game Duration: 2:03
 Attendance: 15,801

Officials: Tommi Paris, Tiffany Bird, Gina Cantanzarilli

Grand Canyon - 54

Record: 0-1

NO.	Name	Min	FG M-A	3P M-A	FT M-A	Rebounds OR DR TOT	Fouls PF FD	TP	AS	TO	ST	Blocks BS BA	+/
1	Anissa Jeffries	F 29:58	5-10	0-3	1-1	2 3 5	3 1 1	11	1	1	0	0 0	-29
11	Holly Griffiths	F 04:56	0-1	0-1	0-0	0 0 0	2 0 0	0	0	1	0	0 0	-6
0	Chloe Mann	G 22:35	4-12	3-8	4-4	1 0 1	3 5 15	2	2	2	0	0 1	-24
8	Sifa Joyeuse	G 17:45	2-9	1-6	1-2	0 4 4	2 3 6	0	1	0	1	0 0	-16
20	Juliana LaMendola	G 18:38	1-5	0-4	0-0	1 1 2	5 2 2	2	2	2	0	0 0	-20
54	Faith Carson	16:48	1-3	0-2	0-0	0 4 4	3 2 2	0	1	0	1	0 0	-21
3	Ale'Jah Douglas	26:19	4-10	3-6	5-6	1 2 3	2 4 16	0	2	0	0	1 0	-26
15	Favor Ayodele	10:04	0-1	0-0	0-0	2 1 3	3 1 0	0	0	0	1	1 0	-17
33	Ines Zounia	06:28	0-3	0-1	0-0	0 0 0	1 0 0	0	0	3	1	0 0	-13
6	Casey Valenti-Paea	10:08	0-4	0-1	0-0	0 1 1	1 0 0	0	0	1	1	0 2	-6
24	Norah Moo	17:17	0-1	0-0	1-2	2 0 2	0 1 1	0	0	0	0	0 0	-13
7	Karley Johnson	09:12	0-0	0-0	0-0	1 1 2	2 1 0	0	1	1	1	0 0	2
4	Diamond Wright	07:29	0-2	0-1	1-2	0 0 0	0 1 1	0	0	0	0	0 0	-8
22	Kaitlyn Elsholz	02:23	0-1	0-1	0-0	0 0 0	0 0 0	0	0	0	0	0 0	-1
Team						2 2 4	0 0	0	0	2			
Totals			17-62	7-34	13-17	12 19 31	26 21 54	6	17	3	3	6 40	

Major Fouls: NONE

South Carolina - 94

Record: 1-0

NO.	Name	Min	FG M-A	3P M-A	FT M-A	Rebounds OR DR TOT	Fouls PF FD	TP	AS	TO	ST	Blocks BS BA	+/-
8	Joyce Edwards	F 27:10	5-11	0-2	3-4	2 3 5	3 2 13	1	2	0	1	1	30
11	Madina Okot	C 17:26	4-5	0-0	4-6	4 3 7	12 0	0	0	0	0	0	25
00	Ta'Niya Latson	G 28:06	7-10	1-2	5-8	0 1 1	2 6 29	4	2	1	0	1	34
5	Tessa Johnson	G 32:31	8-13	3-6	0-0	1 4 5	1 2 19	3	1	1	1	0	38
25	Raven Johnson	G 25:48	4-6	3-5	0-0	0 8 8	2 0 11	7	1	3	0	0	23
1	Maddy McDaniel	07:41	1-2	1-1	0-0	0 0 0	2 1 3	2	0	0	0	0	15
44	Agot Makeer	19:06	1-3	1-2	2-2	0 2 2	4 2 5	2	3	0	3	0	8
30	Maryam Dauda	09:58	0-0	0-0	0-0	0 2 2	1 0 0	0	0	0	0	0	1
24	Ayla McDowell	17:29	3-5	0-1	3-4	1 1 2	2 4 9	0	2	1	0	0	0
15	Adhel Tac	14:45	1-2	0-0	0-1	1 5 6	1 2 2	0	0	0	0	1	16
Team						0 3 3	0 0	0	0	0			
Totals			34-57	9-19	17-25	5 33 38	21 26 94	19 11	6	6	3	40	

Major Fouls: NONE

	CLM	USC
Biggest lead	0 (1 st 10:00)	41 (4 th 2:19)
Best Scoring Run	5 (2 nd 3:25)	15 (1 st 0:32)
Lead Changes	0	
Times Tied	0	
Time with Lead	00:00	39:49

Points from	CLM	USC
Turnovers	10	22
Paint	18	40
Second Chance	15	14
Fast Breaks	2	32
Bench	20	19

Period by Period Scoring	1st	2nd	3rd	4th	TOT
CLM	10	21	16	7	54
USC	29	31	19	15	94

Record: 1-0

Shooting By Period		
FG%	10-16	62.5%
3PT%	4-9	44.4%
FT%	5-7	71.4%
FG%	12-17	70.6%
3PT%	5-7	71.4%
FT%	2-3	66.7%
FG%	6-12	50.0%
3PT%	0-2	0.0%
FT%	7-11	63.6%
FG%	6-12	50.0%
3PT%	0-1	0.0%
FT%	3-4	75%
FG%	34-57	59.6%
3PT%	9-19	47.4%
FT%	17-25	68.0%
Dead Ball Rebounds: 5.		

Major Fouls: NONE

	BGU	USC
Biggest lead	2 (1 st 9:21)	68 (4 th 3:31)
Best Scoring Run	4 (3 rd 1:37)	16 (4 th 3:31)
Lead Changes	1	
Times Tied	1	
Time with Lead	00:19	37:59

Points from	BGU	USC
Turnovers	13	21
Paint	18	66
Second Chance	4	20
Fast Breaks	2	37
Bench	22	35

Period by Period Scoring	1st	2nd	3rd	4th	TOT
BGU	7	12	16	12	47
USC	27	28	31	28	114

Dead Ball Rebounds: 4.0



Official Basketball Box Score - Final
Clemson at South Carolina
 11/11/25 Colonial Life Arena, Columbia
 2025-26 Women's Basketball

Game Time: 6:00 PM
 Game Duration: 1:36
 Attendance: 16,023

Officials: Katie Lukanich, Denise Brooks, Brandon Entine

Clemson - 37

Record: 0-1

NO.	Name	Min	FG M-A	3P M-A	FT M-A	Rebounds OR DR TOT	Fouls PF FD	TP	AS	TO	ST	Blocks BS BA	+/-							
25	Demeara Hinds	F 17:54	3-6	0-0	2-2	4 4 8	4 2 8	1	2	0	0	1	-10							
32	Raven Thompson	F 20:15	0-1	0-0	0-0	0 3 3	2 1 0	0	2	1	0	0	-17							
10	Taylor Johnson-Matthews	G 25:58	3-12	1-6	2-2	1 3 4	0 1 9	0	2	1	0	3	-22							
12	Mia Moore	G 25:48	2-10	1-3	0-0	0 4 4	1 1 5	0	1	0	0	3	-29							
14	Rachael Rose	G 29:15	3-7	0-4	0-0	0 1 1	2 2 6	1	0	0	0	1	-17							
21	Hadley Periman	35:07	1-5	1-5	0-0	1 1 2	2 3 3	3	1	4	0	0	-20							
11	Rusne Augustinaitis	24:31	1-12	1-8	0-0	0 4 4	0 0 3	2	0	0	0	2	-3							
5	Hannah Kohn	14:57	1-7	1-7	0-0	0 0 0	1 0 3	0	1	0	0	0	-11							
31	Morgan Lee	02:27	0-0	0-0	0-0	0 0 0	2 0 0	0	0	0	0	0	-5							
0	Holland Harris	03:50	0-1	0-0	0-0	0 0 0	0 0 0	0	0	0	0	0	-6							
Team						4	1	5	0	0	2									
Totals						14-61	5-33	4-4	10	21	31	14	10	37	9	10	5	1	10	-28

Major Fouls: NONE

Major Fouls: NONE

South Carolina - 65

Record: 1-0

NO.	Name	Min	FG M-A	3P M-A	FT M-A	Rebounds OR DR TOT	Fouls PF FD	TP	AS	TO	ST	Blocks BS BA	+/-
8	Joyce Edwards	F 30:16	8-17	0-0	2-3	3 5 8	1 3 18	2	1	1	3	1 21	
11	Madina Okot	C 24:46	5-12	0-0	2-2	4 8 12	3 4 12	1	1	1	1	0 27	
00	Ta'Niya Latson	G 34:23	4-8	1-1	3-4	0 8 8	0 3 12	3	4	0	2	0 27	
5	Tessa Johnson	G 35:15	5-8	2-4	1-1	0 2 2	0 2 13	3	1	0	1	0 27	
25	Raven Johnson	G 30:02	1-5	0-0	0-0	0 1 1	1 1 2	2	2	2	0	1 15	
30	Maryam Dauda	15:59	1-4	0-1	0-0	3 4 7	1 0 2	0	1	1	1	0 14	
44	Agot Makeer	19:13	2-4	2-3	0-0	0 4 4	3 1 6	0	1	0	1	0 17	
24	Ayla McDowell	04:09	0-0	0-0	0-0	0 1 1	0 0 0	0	0	0	0	0 7	
15	Adhel Tac	05:57	0-0	0-0	0-0	0 3 3	1 0 0	0	0	1	0	0 3	
Team						1 1 2	0 0	0	0				
Totals			26-58	5-9	8-10	11 37 48	10 14 65	11	12	3	10	1 28	
Major Fouls: NONE													

Major Fouls: NONE

	CLM	USC
Biggest lead	0 (1 st 10:00)	28 (4 th 0:49)
Best Scoring Run	8 (3 rd 3:30)	11 (1 st 5:06)
Lead Changes	0	
Times Tied	0	
Time with Lead	00:00	39:09

Points from	CLM	USC
Turnovers	13	11
Paint	18	36
Second Chance	2	16
Fast Breaks	3	7
Bench	9	8

Period by Period Scoring	1st	2nd	3rd	4th	TOT
CLM	12	12	11	2	37
USC	20	15	10	20	65

Dead Ball Rebounds: 2.0

2025-26 SOUTH CAROLINA GAME-BY-GAME STATS

			Total		3-Pointers		Free throws		Rebounds											
Opponent	Date	Score		FG-FGA	PCT	3FG-3FGA	PCT	FT-FTA	PCT	OFF	DEF	TOT	AVG	PF	A	TO	BLK	STL	PTS	AVG
Grand Canyon	11/03/2025	94-54	W	34-57	.596	9-19	.474	17-25	.680	5	33	38	38.0	21	19	11	6	6	94	94.0
Bowling Green	11/07/2025	114-47	W	42-66	.636	6-14	.429	24-30	.800	16	37	53	45.5	9	26	14	11	9	114	104.0
Clemson	11/11/2025	65-37	W	26-58	.448	5-9	.556	8-10	.800	11	37	48	46.3	10	11	12	10	3	65	91.0
Total		273		102-181	.564	20-42	.476	49-65	.754	32	107	139	46.3	40	56	37	27	18	273	91.0
Opponents		138		49-197	.249	18-93	.194	22-27	.815	39	48	87	29.0	60	24	45	6	19	138	46.0

South Carolina Averages

Games Played	Points/game	FG Pct	3FG Pct	FT Pct	Rebounds/game	Assists/game	Turnovers/game	Assist/Turnover ratio	Steals/game	Blocks/game
3	91.0	56.4	47.6	75.4	46.3	18.7	12.3	1.5	6.0	9.0

2025-26 OPPONENT GAME-BY-GAME STATS

			Total		3-Pointers		Free throws		Rebounds											
Opponent	Date	Score		FG-FGA	PCT	3FG-3FGA	PCT	FT-FTA	PCT	OFF	DEF	TOT	AVG	PF	A	TO	BLK	STL	PTS	AVG
Grand Canyon	11/03/2025	94-54	W	17-62	.274	7-34	.206	13-17	.765	12	19	31	31.0	26	6	17	3	3	54	54.0
Bowling Green	11/07/2025	114-47	W	18-74	.243	6-26	.231	5-6	.833	17	8	25	28.0	20	9	18	2	11	47	50.5
Clemson	11/11/2025	65-37	W	14-61	.230	5-33	.152	4-4	1.000	10	21	31	29.0	14	9	10	1	5	37	46.0
Total		138		49-197	.249	18-93	.194	22-27	.815	39	48	87	29.0	60	24	45	6	19	138	46.0
South Carolina		273		102-181	.564	20-42	.476	49-65	.754	32	107	139	46.3	40	56	37	27	18	273	91.0

Opponents Averages

Games Played	Points/game	FG Pct	3FG Pct	FT Pct	Rebounds/game	Assists/game	Turnovers/game	Assist/Turnover ratio	Steals/game	Blocks/game
3	46.0	24.9	19.4	81.5	29.0	8.0	15.0	0.5	6.3	2.0

2025-26 SOUTH CAROLINA POINTS-REBOUNDS-ASSISTS

Opponent	Date	Score		00 LATSON,TA	1 MCDANIEL,M	5 JOHNSON,TE	8 EDWARDS,JO	11 OKOT,MADIN	15 TAC,ADHEL	24 MCDOWELL,A	25 JOHNSON,RA	30 DAUDA,MARY	44 MAKEER,AGO
Grand Canyon	11/03/2025	94-54	W	20-1-4	3-0-2	19-5-3	13-5-1	12-4-0	2-6-0	9-2-0	11-8-7	0-2-0	5-2-2
Bowling Green	11/07/2025	114-47	W	17-4-4	DNP	14-7-3	24-4-3	13-11-2	3-2-2	11-3-1	11-5-11	9-8-0	12-3-0
Clemson	11/11/2025	65-37	W	12-8-3	DNP	13-2-3	18-8-2	12-12-1	0-3-0	0-1-0	2-1-2	2-7-0	6-4-0

2025-26 CUMULATIVE STATS

Game Records

Record	Overall	Home	Away	Neutral
ALL GAMES	3-0	3-0	0-0	0-0
CONFERENCE	0-0	0-0	0-0	0-0
NON-CONFERENCE	3-0	3-0	0-0	0-0

Score by Periods

Team	1st	2nd	3rd	4th	OT	TOT
South Carolina	76	74	60	63	0	273
Opponents	29	45	43	21	0	138

Team Box Score

No.	Player				Total		3-Point		F-Throw		Rebounds											
		GP-GS	MIN	AVG	FG-FGA	FG%	3FG-3FGA	3FG%	FT-FTA	FT%	OFF	DEF	TOT	AVG	PF	DQ	A	TO	BLK	STL	PTS	AVG
8	EDWARDS, Joyce	3-3	82:36	27.5	24-40	.600	0-2	.000	7-10	.700	8	9	17	5.7	4	0	6	3	7	1	55	18.3
00	LATSON, Ta'Niya	3-3	93:58	31.3	16-29	.552	2-5	.400	15-19	.789	0	13	13	4.3	4	0	11	7	3	1	49	16.3
5	JOHNSON, Tessa	3-3	94:45	31.6	19-32	.594	7-15	.467	1-1	1.000	3	11	14	4.7	3	0	9	7	2	1	46	15.3
11	OKOT, Madina	3-3	63:48	21.3	15-26	.577	0-0	.000	7-9	.778	8	19	27	9.0	6	0	3	1	5	2	37	12.3
25	JOHNSON, Raven	3-3	78:50	26.3	9-18	.500	4-7	.571	2-2	1.000	0	14	14	4.7	5	0	20	5	1	6	24	8.0
44	MAKEER, Agot	3-0	54:04	18.0	7-13	.538	4-7	.571	5-7	.714	1	8	9	3.0	7	0	2	6	5	1	23	7.7
24	MCDOWELL, Ayla	3-0	44:25	14.8	6-10	.600	2-4	.500	6-8	.750	2	4	6	2.0	3	0	1	4	0	3	20	6.7
30	DAUDA, Maryam	3-0	46:50	15.6	3-7	.429	0-1	.000	5-6	.833	7	10	17	5.7	3	0	0	3	2	2	11	3.7
1	MCDANIEL, Maddy	1-0	07:41	7.7	1-2	.500	1-1	1.000	0-0	.000	0	0	0	0.0	2	0	2	0	0	0	3	3.0
15	TAC, Adhel	3-0	33:03	11.0	2-4	.500	0-0	.000	1-3	.333	2	9	11	3.7	3	0	2	1	2	1	5	1.7
Team											1	10	11									
Total		3	600		102-181	.564	20-42	.476	49-65	.754	32	107	139	46.3	40	0	56	37	27	18	273	91.0
Opponents		3	600		49-197	.249	18-93	.194	22-27	.815	39	48	87	29.0	60	1	24	45	6	19	138	46.0

Team Statistics

	SC	OPP
Scoring	273	138
Points per game	91.0	46.0
Scoring margin	+45.0	-
Field goals-att	102-181	49-197
Field goal pct	.564	.249
3 point fg-att	20-42	18-93
3-point FG pct	.476	.194
3-pt FG made per game	6.7	6.0
Free throws-att	49-65	22-27
Free throw pct	.754	.815
F-Throws made per game	16.3	7.3
Rebounds	139	87
Rebounds per game	46.3	29.0
Rebounding margin	+17.3	-
Assists	56	24
Assists per game	18.7	8.0
Turnovers	37	45
Turnovers per game	12.3	15.0
Turnover margin	+2.7	-
Assist/turnover ratio	1.5	0.5
Steals	18	19
Steals per game	6.0	6.3
Blocks	27	6
Blocks per game	9.0	2.0
Winning streak	3	-
Home win streak	3	-
Attendance	48873	0
Home games-Avg/Game	3-16291	0-0
Neutral site-Avg/Game	-	0-0

Team Results

Date	Opponent		Score	Att.
11/03/2025	Grand Canyon	W	94-54	15601
11/07/2025	Bowling Green	W	114-47	16649
11/11/2025	Clemson	W	65-37	16623