

# SOUTH CAROLINA WOMEN'S BASKETBALL



3 NCAA CHAMPIONSHIPS • 7 NCAA FINAL FOURS • 9 SEC CHAMPIONSHIPS • 9 SEC TOURNAMENT TITLES • 26 ALL-AMERICANS

Assoc. AD Comms/PR: Diana Koval | Office: 803.777.7977 | Cell: 314.369.6050 | Email: dkoval@mailbox.sc.edu  
Web: www.GamecocksOnline.com | X: @GamecockWBB | Instagram: @GamecockWBB | TikTok: @GamecockWBB | Facebook: @GamecockWBB

GAME 1 • NOVEMBER 3, 2025 • COLUMBIA, SC • COLONIAL LIFE ARENA (18,000)

## #2/2 GAMECOCKS

0-0

Head Coach: Dawn Staley  
Record at SC: 475-110 (18th)  
Career Record: 647-190 (26th)  
Top Ret. Scorer: Joyce Edwards (12.7)  
Top Ret. Rebounder: Joyce Edwards (5.0)



## GRAND CANYON

0-0

Head Coach: Winston Gandy  
Record at GCU: First Season  
Career Record: First Season  
Top Ret. Scorer: Ale'jah Douglas (3.0)  
Top Ret. Rebounder: Ale'jah Douglas (1.3)

## SCHEDULE/RESULTS

Oct. 24	Anderson (Exh.)	W, 112-31
Oct. 30	vs. #11/11 N. Carolina (Exh.)	W, 91-82
Nov. 3	Grand Canyon (SECN+)	7 p.m.
Nov. 7	Bowling Green (SECN+)	7 p.m.
Nov. 11	Clemson (ESPN2)	6 p.m.

The Real SC (Los Angeles)  
Nov. 15 vs. Southern Cal (FOX) 9 p.m.

Nov. 19 Winthrop (SECN) 7 p.m.  
Nov. 23 Queens (SECN+) 2 p.m.

Players Era Championship (Las Vegas)  
Nov. 26 vs. Duke 4:30 p.m.  
Nov. 27 vs. UCLA/Texas 8/10:30 p.m.

Dec. 4 ACC/SEC Challenge at Louisville (ESPN) 7 p.m.

Dec. 7	NC Central (SECN)	Noon
Dec. 14	Penn State (ESPN)	3:30 p.m.
Dec. 18	at USF (ESPN2)	7 p.m.
Dec. 20	at Florida Gulf Coast	2 p.m.
Dec. 28	Providence (SECN)	Noon
Jan. 1	Alabama* (SECN+)	2 p.m.
Jan. 4	at Florida* (SECN)	2 p.m.
Jan. 8	at Arkansas* (SECN+)	7:30 p.m.
Jan. 11	Georgia* (SECN)	2 p.m.
Jan. 15	Texas* (ESPN2)	7 p.m.
Jan. 18	at Coppin State (ESPN+)	Noon
Jan. 22	at Oklahoma* (ESPN)	7 p.m.
Jan. 25	Vanderbilt* (ESPN)	3 p.m.
Jan. 29	at Auburn* (SECN)	9 p.m.
Feb. 2	at Texas A&M* (ESPN2/U)	8 p.m.
Feb. 5	Mississippi State* (SECN)	6:30 p.m.
Feb. 8	Tennessee* (ABC)	3 p.m.
Feb. 14	at LSU* (ABC)	8:30 p.m.
Feb. 19	at Alabama* (SECN)	8:30 p.m.
Feb. 22	Ole Miss* (ESPN/2)	Noon
Feb. 26	Missouri* (SECN)	8 p.m.
Mar. 1	at Kentucky* (SECN+)	2 p.m.

Mar. 4-8 SEC Tournament (Greenville, SC)

\* indicates SEC game  
All times Eastern  
TV outlet listed in parentheses (WSN in Women's Sports Network;  
SECN is SEC Network; SECN+ is SEC Network online via the ESPN app.

### THE SERIES

SC Record/Staley Era: 0-0 / 0-0  
H: 0-0 A: 0-0 N: 0-0  
Current Streak: First Meeting  
Last Meeting: First Meeting

### HOW TO FOLLOW

Watch: SECN+ (Dave Weinstein, John Williams)  
Listen: 107.5 FM The Game; Sirius XM 106 or 190 and on the SiriusXM app (Brad Muller)  
Live Stats: StatBroadcast

### GAMECOCK NOTABLES

- Prior to the season's first official tipoff, South Carolina will celebrate its 2024-25 season with a ceremony slated to begin at approximately 6:40 p.m. With banners for SEC regular-season and tournament championships and another Final Four appearance, the Gamecocks will receive their rings commemorating those achievements as well. Grand Canyon head coach Winston Gandy and assistant coach Chloe Rice, who were part of the Gamecocks' 2024-25 success, are scheduled to participate in the ceremony as well.
- The Gamecocks are coming off a 91-82 win over #11/11 North Carolina in exhibition action last Thursday in Atlanta. South Carolina out-scored the Tar Heels 54-34 in the paint and shot 50.0 percent from the field in the victory.
- South Carolina's 2025-26 schedule includes 11 games against teams ranked in the preseason national polls. Four of those games are in non-conference action, and six of the 11 are against other preseason top-10 opponents..
- Five Gamecocks earned spots on their position award watch lists, making South Carolina one of three schools with an entry on every list.
- After leading South Carolina in scoring last season, sophomore Joyce Edwards picked up where she left off, averaging a team-high 19.5 points in exhibition action this season, during which she also averaged 8.5 rebounds.
- Point guard Raven Johnson continues to be the engine that drives the Gamecocks on both side of the ball, averaging team highs with 4.0 assists and 3.5 steals in exhibition play.
- The Gamecocks' veteran transfers have been as-advertised already in exhibition games. Ta'Niya Latson, the 2024-25 NCAA scoring leader, averaged 16.5 points and 3.0 assists over the two games, including 19 against #11/11 North Carolina. Madina Okot's exhibition play averaged a double-double of 14.0 points and 10.5 rebounds.
- A pair of reserves stood out in the exhibition against #11/11 North Carolina. Senior forward Maryam Dauda poured in 10 points on 4-of-6 shooting to go with five rebounds in just 18 minutes on the court. Sophomore Maddy McDaniel was equally efficient with a dynamic nine points on 3-of-4 shooting and four assists – against just one turnover – in 23 minutes on the court.

2.73

Raven Johnson's 2.73 career assist-to-turnover ratio would rank as the best in program history.

97.8

The Gamecocks have won 97.8 percent of their home games over the last six seasons (91-2), including four undefeated seasons.

134

South Carolina has been ranked in the AP top three 134 times in the Dawn Staley era, including 56 of the last 62 polls.

### TALE OF THE TAPE (2024-25 STATS)

SOUTH CAROLINA	79.1	.465	.340	5.7	.760	13.1	58.0	+21.1	.356	.292	+7.6	16.3	+4.1	5.7	9.1
	Points	FG%	3FG%	3FGM per Game	FT%	FTM per Game	Scoring Def.	Scoring Margin	FG% Def.	3FG% Def.	Reb. Margin	Assist Avg.	TO Margin	Blocks Avg.	Steals Avg.
GRAND CANYON	76.7	.488	.375	7.3	.722	11.5	57.2	+19.5	.393	.281	+2.2	16.9	+6.7	2.8	12.9

**T'NIYA LATSON**

5-8 • Sr. • G • Miami, FL

tuh-NYE-uh LAT-son

00



Preseason All-SEC 1st Team, All-America ... 3x All-America, All-ACC 1st Team ... led NCAA in ppg last season ... efficient scorer and distributor, looking to further expand her game in final college season.

2024-25*	Career*	Career Highs
PPG 25.2	22.5	Pt: 40 at Va. Tech, 1/2/25*
APG 4.6	3.9	Rb: 11 vs. TTU, 11/29/24*
FG% .451	.448	Ast: 12 at Va., 2/6/25*
3FG% .343	.326	Stl: 8 vs. Presby, 12/15/22*
FT% .818	.842	3FG: 5 vs. Miami, 1/19/25*

**MADDY McDANIEL**

5-9 • So. • G • Upper Marlboro, Md.

1



Court vision ... can get to the rim ... makes good decisions ... played in 30 games last season ... 3.0 A:TO ... McDonald's All-American ... No. 14 player in Class of 2024.

2024-25	Career	Career Highs
PPG 3.1	3.1	Pt: 10 vs. Purdue, 11/30/24
RPG 0.8	0.8	Rb: 4 vs. USF, 12/15/24*
APG 1.7	1.7	Ast: 6 vs. ECU, 11/17/24
FG% .500	.500	Stl: 4 vs. ECU, 11/17/24
FT% .688	.688	3FG: 1 vs. Fla., 2/13/25*

**TESSA JOHNSON**

6-0 • Jr. • G • Albertville, MN

5



Multi-level scoring threat ... career-high ppg, apg, FG% last season ... SEC champion and NCAA Final Four every year of her career ... 2024 NCAA Final Four All-Tournament Team.

2024-25	Career	Career Highs
PPG 8.4	7.5	Pt: 22 at Miss. St., 1/5/25
APG 1.5	1.3	Rb: 7 vs. Md., 11/12/23
FG% .474	.462	A: 6 vs. TN Tech, 3/21/25*
3FG% .430	.431	Stl: 3 vs. Ala., 2/22/24*
FT% .825	.843	3FG: 4 at Miss. St., 1/5/25*

**JOYCE EDWARDS**

6-3 • So. • F • Camden, SC

8



Preseason All-SEC 1st Team ... 2025 All-Amer., 1st-Team All-SEC ... top returning scorer and rebounder ... size, speed, skill and feel for the game ... 2025 FIBA AmeriCup gold medal.

2024-25	Career	Career Highs
PPG 12.7	12.7	Pt: 28 vs. Fla., 2/13/25
RPG 5.0	5.0	Rb: 12 at Vandy, 2/23/25
BPG 0.5	0.5	Blk: 2 at Vandy, 2/23/25*
FG% .529	.529	Ast: 6 vs. Texas, 4/4/25
FT% .777	.777	Stl: 4 vs. NC St., 11/10/24

**MADINA OKOT**

6-6 • Sr. • C • Mumias, Kenya

mah-DEE-nuh oh-COAT

11



Size and strength to play inside with expanding range on her shot ... led SEC in FG% and fourth in rebounding last season ... 12 double-doubles in 34 games in lone season at Mississippi State.

2024-25*	Career*	Career Highs
PPG 11.3	11.3	Pt: 26 at UMES, 12/20/24*
RPG 9.6	9.6	Rb: 23 at Vandy, 2/13/25*
BPG 1.1	1.1	Blk: 4 at Mizzou, 1/27/25*
FG% .649	.649	Ast: 3 at Fla., 2/26/25**
FT% .625	.625	Stl: 5 vs. Ala. St., 11/13/24*

**ADHEL TAC**

6-5 • So. • F • Grand Prairie, TX

uh-DELL TACK

15



Interior presence ... high motor ... can impact the game in many ways ... played in 23 gms ... enrolled in Jan. 2024 after season-ending injury (her 2nd in as many years) ... No. 28 in Class of 2024.

2024-25	Career	Career Highs
PPG 1.6	1.6	Pt: 9 at Mizzou, 1/2/25
RPG 1.6	1.6	Rb: 6 at Mizzou, 1/2/25
BPG 0.1	0.1	Blk: 1 at Mizzou, 1/2/25*
FG% .419	.419	Ast: 1 vs. Ark., 2/20/25
FT% .625	.625	Stl: 1 vs. Texas, 4/4/25*

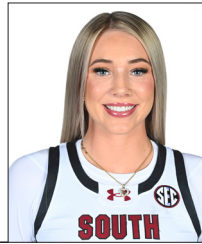
\* indicates includes games at previous NCAA Div. I institution

\* indicates has happened multiple times, most recent listed

**CHLOE KITTS**

6-2 • Sr. • F • Oviedo, FL

21



Tenacious; improved physical, mental strength ... will not play this season after ACL surgery in Oct. 2025 ... in 2025 SEC Tourn and NCAA Regional MVP, All-American, team's top rebounder.

2024-25	Career	Career Highs
PPG 10.2	8.1	Pt: 25 vs Vandy, 3/7/25
RPG 7.7	5.8	Rb: 14 vs Mich., 11/4/24*
APG 1.9	1.5	Blk: 5 vs Mizzou, 2/8/24
FG% .520	.523	Ast: 10 at Miss., 2/27/25
FT% .798	.734	Stl: 4 at Miss., 2/27/25

**AYLA McDOWELL**

6-1 • Fr. • G • Cypress, TX

EYE-luh

24



Three-level scorer, able to guard every position ... great size and athleticism ... amassed over 2,700 points in high school ... McDonald's All-American, No 15 in 2025 Class ... Brazil National Team Pool.

2024-25	Career	Career Highs
PPG —	—	Pt: —
APG —	—	Rb: —
FG% —	—	Ast: —
3FG% —	—	Stl: —
FT% —	—	3FG: —

**RAVEN JOHNSON**

5-9 • Sr. • G • Atlanta, GA

25



Great instincts ... quick with the ball and good decision-maker ... led team to winning at every level ... 10th in program history in assists ... 2024 All-SEC, 2025 SEC All-Defensive Team.

2024-25	Career	Career Highs
PPG 4.9	5.6	Pt: 18 v. SDSU, 11/20/23
RPG 4.5	4.1	Rb: 15 at Tenn., 2/15/24
APG 2.8	3.6	A: 17 v. Clems., 11/16/23
FG% .350	.393	Stl: 6 vs Auburn, 2/2/25
FT% .682	.639	Blk: 2 v. Texas, 1/12/25*

**MARYAM DAUDA**

6-4 • Sr. • F • Bentonville, Ark.

MARE-ee-um DOW-duh

30



Keeps defenders off balance ... great footwork inside ... effective outside shooter ... has played in 102 career games, including 34 last season ... career-high 10.1 ppg, 6.3 rpg in sophomore year.

2024-25	Career	Career Highs
PPG 2.0	5.1	Pt: 22 at Tulsa, 3/21/24*
RPG 1.9	3.6	Rb: 13 v. Miss St., 1/11/24*
FG% .312	.429	Blk: 10 at Ala., 1/14/24*
3FG% .250	.295	Ast: 5 at Ala., 1/14/24
FT% .750	.752	Stl: 4 v. UGa, 1/7/24*

**AGOT MAKEER**

6-0 • Fr. • G • Thunder Bay, Ontario

uh-GOT muh-KEER

44



Size, speed, versatility to spread the floor ... highly competitive ... McDonald's All-American, No 6 in 2025 Class ... led Montverde to national runner-up ... played for team Canada in U17 and U19 events.

2024-25	Career	Career Highs
PPG —	—	Pt: —
APG —	—	Rb: —
FG% —	—	Ast: —
3FG% —	—	Stl: —
FT% —	—	3FG: —

**DAWN STALEY**

At SC: 475-110 (18th season)

Career: 647-190 (26th season)

HC



- 3 National Championships, including 10th undefeated title season in NCAA history (2024)
- 7 Final Fours in last 10 NCAA Tournaments
- 9 SEC Regular-Season Championships
- 9 SEC Tournament Championships
- 9th in winning percentage (.773) among active NCAA Div. I coaches, 10th all-time
- 12 WNBA Draft picks since 2020 – more than any other program in that time

## QUICK FACTS

### The University

**Location:** Columbia, S.C.

**Founded:** 1801

**Enrollment:** 40,000

**Colors:** Garnet (PMS 202C) and Black

**Nickname:** Gamecocks

**Conference:** Southeastern

**University President:** Michael Amiridis

**Athletics Director:** Jeremiah Donati

**Facility:** Colonial Life Arena (18,000)

### Coaching Staff

**Head Coach:** Dawn Staley

**Alma Mater:** Virginia, 1992

**Overall Record:** 647-190 (26th season)

**School Record:** 475-110 (18th season)

**Assoc. Head Coach, Alma Mater:**

Lisa Boyer, Ithaca, 1979 (18th season)

**Assistant Coaches, Alma Mater:**

Jollette Law, Iowa, 1990 (9th season)

Wendale Farrow, E. Michigan, 2009 (1st season)

Mary Wooley, USC Aiken, 2002 (3rd season)

Khadijah Sessions, South Carolina, 2016 (3rd season)

### Team Information

**2024-25 Record:** 35-4

Home: 16-1 Away: 8-2 Neutral: 11-1

**SEC Record (Finish):** 15-1 (T-1st)

Home: 8-0 Away: 7-1

**Letterwinners Returning/Lost:** 2/3

**Starters Returning/Lost:** 7/6

### Program History

**First Year of Women's Basketball:** 1974-75

**All-Time Record:** 1,055-539 (52nd season)

**All-Time SEC Record:** 278-213 (35th season)

**NCAA Appearances (Last):** 21 (2025)

**NCAA Tournament Record:** 55-18

**2025 NCAA Result:** Runner-Up

**WNIT Appearances (Last):** 5 (2011)

**WNIT Record:** 6-4

### Media Relations

**Women's Basketball Contact:** Diana Koval

**Office:** 803.777.7977

**Cell:** 314.369.6050

**Email:** dkoval@mailbox.sc.edu

**Women's Basketball on Social Media:**

**Twitter:** @GamecockWBB

**Instagram:** @GamecockWBB

**Facebook:** @GamecockWBB

**TikTok:** @GamecockWBB

**Head Coach on Social Media**

**Twitter:** @DawnStaley

**Instagram:** @Staley05

**Athletics Department on the Web**

**Website:** GamecocksOnline.com

**Twitter:** @GamecocksOnline

**Instagram:** @GamecocksOnline

**Facebook:** Facebook.com/GamecocksOnline

**YouTube:** YouTube.com/GamecocksOnline

## The Staley Effect

Under Dawn Staley, South Carolina women's basketball had been a perennial national power since winning its first SEC title in 2013-14. A few of the highlights from that.

- 5 straight NCAA Final Four appearances (2021-2025) is the longest active streak and the second-longest streak in tournament history.
- 3 National Championships are third most by a single program in tournament history.
- 10th undefeated National Championship season in NCAA history (2023-24)
- 84 AP No. 1 rankings are third-most by a program in the poll's history.
- 118 straight AP Top-10 rankings is the longest active streak – more than three times the next program (Texas, 30)
- 11 Gamecocks have earned All-America status

## The Grand Canyon Series

The Gamecocks and Lopes have never met in women's basketball. The two teams may be more familiar with each other than expected, though, as Grand Canyon head coach Winston Gandy was on the Gamecocks' bench the last two seasons. GCU assistant coach Chloe Rice was a grad assistant at South Carolina in that time as well.

Both were part of the Gamecocks' undefeated National Championship season in 2023-24 as well as the team's return to the national title game in 2025.

## Season Openers

South Carolina is 15-2 in season openers under head coach Dawn Staley with the two losses coming in her first three seasons at the helm. Five of those 17 season openers were against ranked opponents.

The Gamecocks are opening the season at home for the first time since the 2022-23 season after playing the last two season openers at neutral sites. The are 8-1 when opening the season at home in the Dawn Staley era.

## Home Sweet Home

The Gamecocks are 546-168 (.765) in home games (some records prior to 1976-77 did not include location of games). Current head coach Dawn Staley is 234-35 at home for a program-best .870 winning percentage.

Playing in its 24th season at Colonial Life Arena, South Carolina boasts a 297-68 (.814) record in the building, including four undefeated seasons since 2013-14. Staley's share of that record is 231-35 (.868).

South Carolina's longest home winning streak is 71 (Dec. 17, 2020 - Feb. 13, 2025), which is an SEC record and ranks fourth in NCAA history.

## Exhibition Action

South Carolina won both their exhibition games this season, including a top-15 matchup against No. 11/11 North Carolina on Oct. 30 in Atlanta. Over the two games, Joyce Edwards led five Gamecocks averaging double

## 2025-26 AWARDS

### Maryam Dauda

Cheryl Miller Preseason Top 20 Watch List

### Joyce Edwards

Preseason USA Today Second-Team All-America

Naismith Trophy Watch List (preseason)

Preseason All-SEC First Team (media, coaches)

Katrina McClain Preseason Top 20 Watch List

### Raven Johnson

Naismith Trophy Watch List (preseason)

Nancy Lieberman Preseason Top 20 Watch List

### Ta'Niya Latson

Preseason AP All-America

Preseason USA Today First-Team All-America

Naismith Trophy Watch List (preseason)

Preseason All-SEC First Team (coaches)

Preseason All-SEC Second Team (media)

Ann Meyers Drysdale Preseason Top 20 Watch List

### Madina Okot

Lisa Leslie Preseason Top 20 Watch List

figures with 19.5 points per game. Madina Okot dominated the glass with 10.5 rebounds per game. Raven Johnson's 4.0 assists and 3.5 steals per game led the team.

As a team, South Carolina shot 51.7 percent from the field with six Gamecocks shooting over 50.0 percent.

## Ranking Review

South Carolina opens the season ranked No. 2 in both the AP Poll and the USA Today/WBCA Coaches' Poll.

It marks the Gamecocks' 118th consecutive entry in the AP top 10, beginning with the 2019-20 preseason poll. It is the longest active streak and the eighth longest in the history of that poll (7th is 137, Baylor). Their 249 straight appearances in the AP Poll, dating back to Dec. 10, 2012, marks the second-longest active streak in the nation and is the seventh longest all-time (6th, Maryland, 251).

In the USA Today/WBCA Coaches' Poll, South Carolina has been in the top 10 since claiming the No. 10 spot in the 2019-20 preseason poll.

## Schedule Sketch

South Carolina's schedule continues to challenge and prepare the team for the postseason. This year's slate features 11 games against teams ranked in the preseason top 25 – four at home, four on the road and three at neutral sites. Six of the 11 games are against teams in the preseason top 10.

The non-conference schedule is highlighted by four ranked matchups – vs. #18/16 Southern Cal (Nov. 15), vs. #7/6 Duke (Nov. 26) vs. #3/4 UCLA or #4/3 Texas (Nov. 27) and at #20/19 Louisville (Dec. 4).

## SEASON THEME: BEYOND MEASURE

Each year Dawn Staley chooses a theme for the team and fans to center their season around, and it often reflects not just the state of South Carolina women's basketball, but that of the game overall.

The Gamecocks' 2025-26 season theme is Beyond Measure, which centers on the value of the whole person or group beyond the commonly measured scale. A player's value to the team is not measured solely by her statline but also by a myriad of other ways she elevates her team. Championships and awards are not valued because they yield a trophy but also because they lift up a university, a city, a state. The value of the FAMS who support the team around the country is more than the value of ticket sales, but it is in the way they form a united community that supersedes all their difference.

More broadly, Beyond Measure is a reminder that the ceiling of the team and its players – and that of women's basketball as a sport – will always shatter any limitations others may place on it.

## CURRENT STREAKS

	Total	Home	Road	Neut.
Overall	L1	W4	W2	L1
SEC	W5	W47	W2	–
Non-Conference	L1	W2	L1	L1
Ranked Teams	L1	W1	L1	L1



## The Staley File

In her 26th season as a head coach, Dawn Staley has a .773 (647-190) winning percentage, which ranks ninth in the nation among active head coaches and 10th all-time. With three national championships, she ranks fourth among head coaches all-time in NCAA titles.

Staley is one of just two women's basketball coaches to lead their teams to multiple 40-game win streaks in NCAA history with the Gamecocks' recent program-record 43-game streak ranking seventh longest in NCAA history. She is the first Black head coach to win multiple national championships in men's or women's basketball and one of just 11 men's or women's coaches to win at least three. She is one of seven coaches to lead a team to at least four NCAA National Championship games.

Now in her 18th season with the Gamecocks, Staley is the program's all-time winningest coach (475) with a program-record 14 postseason appearances. She accounts for all seven of the Gamecocks' Final Four appearances and the only NCAA National Championships in program history.

Staley's nine SEC regular-season championships trail only Pat Summitt's 16 in league history, and her seven SEC Coach of the Year awards trail Summitt's league record by just one. Staley's 214 SEC regular-season wins are the most among active league coaches and third all-time – behind just Summitt (Tennessee, 306) and Andy Landers (Georgia, 273). She was the second-fastest to the 200-win mark in league history with her 255 games trailing Summitt's mark of 229. Staley's .793 SEC winning percentage (214-56) is second only to Summitt (.874) among coaches in the league at least five seasons. She owns the SEC record for consecutive regular-season conference victories with a 57-game streak that began in the 2021-22 season and ended in 2024-25.

## First Watch

Gamecocks have dominated the many national award watch lists that are announced each preseason.

South Carolina is one of three schools with a player on each of the Naismith Hall of Fame Women's Starting Five watch lists.

Three Gamecocks are on the Naismith Women's Player of the Year Watch List – Joyce Edwards, Raven Johnson, Ta'Niya Latson – to make South Carolina one of five teams with at least three entires on the list.

Latson drew preseason All-America honors from both the Associated Press and USA Today. Edward earned a spot on the USA Today Preseason All-America Second Team.

The pair was also ranked on ESPN's list of the top 25 players in the NCAA this season. Latson came in at #7 with Edwards close behind at #11, making South Carolina one of two programs with multiple players in the first 11 places.

## Back in (Garnet and) Black

South Carolina's 11-player roster includes seven returning letterwinners from last season's SEC championship and NCAA runner-up squad. The group lost leading rebounder Chloe Kitts to a season-ending injury prior to the start of the season, it still includes honorable mention All-American Joyce Edwards, who led the team in scoring.

Veteran guards Raven Johnson – a program top-10 entry in career assists – and Tessa Johnson, whose offense powered the Gamecocks' 2024 National Championship, are back to guide their less experienced teammates.

## Newcomer News

Dawn Staley added four newcomers to her roster this season – two elite senior transfers and a pair of top-15 freshmen.

Transfers Ta'Niya Latson (Florida State) – the nation's top scorer last season (25.2 ppg) – and Madina Okot (Mississippi State) – the SEC's top percentage shooter last season (.649) – earned starting spots in both exhibition games. Latson averaged 16.5 points and 3.0 assists, while Okot averaged a double-double (14.0 ppg, 10.5 rpg).

Freshman guards Agot Makeer (#6 in the Class of 2025) and Ayla McDowell (#15 in the Class of 2025) are both McDonald's All-Americans who represented their home countries in international competition this summer.

After leading Montverde Academy to a runner-up finish at the Chipotle High School National Championships, Makeer, suited up for Canada at the FIBA U19 World Cup, helping it to a fourth-place finish with 10.3 points, including 46.2 percent 3-point shooting, and 4.9 rebounds per game.

McDowell amassed over 2,700 career points in high school before wearing her Brazil jersey at both the FIBA AmeriCup and the FIBA U19 World Cup over the summer. For the U19 team, she was the top scorer with a 16.8 scoring average while averaging 4.5 rebounds and 2.7 steals.

## Everybody's All-American

The Gamecocks' 11-woman roster includes eight McDonald's All-Americans – Maryam Dauda, Joyce Edwards, Raven Johnson, Tessa Johnson, Ta'Niya Latson, Agot Makeer, Maddy McDaniel and Ayla McDowell.

At South Carolina, Staley has coached 29 McDonald's All-Americans, including 22 who signed as freshmen.

## GAMES LED TEAM IN...

Scoring	2025-26	Career	Record
Ta'Niya Latson	0	68*	49-19
Joyce Edwards	0	16	14-2
Chloe Kitts	0	10	10-0
Madina Okot	0	8*	7-1*
Tessa Johnson	0	5	5-0
Maryam Dauda	0	5*	1-4

Rebounding	2025-26	Career	Record
Chloe Kitts	0	28	26-2
Madina Okot	0	24*	15-9*
Raven Johnson	0	10	9-1
Joyce Edwards	0	6	5-1
Ta'Niya Latson	0	6*	5-1*
Maryam Dauda	0	5*	2-3

Assists	2025-26	Career	Record
Raven Johnson	0	53	52-1
Ta'Niya Latson	0	49*	32-17*
Chloe Kitts	0	8	8-0
Tessa Johnson	0	5	5-0
Maddy McDaniel	0	5	4-1
Joyce Edwards	0	1	1-0

\* indicates includes games at previous NCAA Div. I program

## MISCELLANEOUS STATS

Triple-Double	2025-26	Career	Record
Chloe Kitts	0	1	1-0
Ta'Niya Latson	0	1*	1-0*

Double-Doubles	2025-26	Career	Record
Chloe Kitts	0	17	17-0
Madina Okot	0	12*	10-2*
Ta'Niya Latson	0	5*	5-0*
Joyce Edwards	0	4	4-0
Maryam Dauda	0	2*	1-1
Raven Johnson	0	1	1-0

40+ Points	2025-26	Career	Record
Ta'Niya Latson	0	1*	1-0*

30+ Points	2025-26	Career	Record
Ta'Niya Latson	0	20*	17-3*

20+ Points	2025-26	Career	Record
Ta'Niya Latson	0	62*	47-15*
Joyce Edwards	0	5	5-0
Chloe Kitts	0	4	4-0
Madina Okot	0	2*	2-0*
Maryam Dauda	0	1*	0-1
Tessa Johnson	0	1	1-0

10+ Points	2025-26	Career	Record
Ta'Niya Latson	0	86*	60-26*
Chloe Kitts	0	43	43-0
Joyce Edwards	0	27	25-2
Tessa Johnson	0	25	24-1
Maryam Dauda	0	22*	12-10
Raven Johnson	0	22	21-1
Madina Okot	0	22*	18-4*
Maddy McDaniel	0	1	1-0

20+ Rebounds	2025-26	Career	Record
Madina Okot	0	1*	1-0*

10+ Rebounds	2025-26	Career	Record
Chloe Kitts	0	21	21-0
Madina Okot	0	17*	12-5*
Maryam Dauda	0	5*	4-1
Joyce Edwards	0	4	4-0
Raven Johnson	0	3	3-0
Ta'Niya Latson	0	3*	3-0*

10+ Assists	2025-26	Career	Record
Ta'Niya Latson	0	4*	4-0*

5+ Assists	2025-26	Career	Record
Raven Johnson	0	37	37-0
Ta'Niya Latson	0	35*	27-8*
Tessa Johnson	0	5	5-0
Chloe Kitts	0	5	5-0
Maddy McDaniel	0	2	2-0
Joyce Edwards	0	1	1-0

5+ Blocks	2025-26	Career	Record
Maryam Dauda	0	1*	1-0

5+ Steals	2025-26	Career	Record
Raven Johnson	0	6	6-0

\* indicates includes games at previous NCAA Div. I program

## WNBA Pipeline

Dawn Staley's status as a dream merchant is most evident by the steady stream of Gamecocks being drafted into and enjoying lengthy careers in the WNBA. Since her first Gamecock was drafted in 2015, she has seen 18 have their name called on draft night – the second-most by a program in that time.

Staley's numbers have skyrocketed since 2020 with an NCAA-best 12 draft picks since then, including a best-in-the-nation six first-round selections in that time.

In proof Staley sends players to the league ready, six Gamecocks have earned All-Rookie Team honors, including three WNBA Rookies of the Year – Allisha Gray (2017), A'ja Wilson (2018), Aliyah Boston (2023).

## Great Gamecock Fans

South Carolina fans have led the nation in average attendance for the last 11 seasons, although the NCAA does not officially recognize the COVID-limited attendance in the 2020-21 season. The Gamecocks are on track to continue that streak after selling out of season tickets for the second time in as many seasons.

South Carolina's attendance average of 16,437 in 2024-25 is the second-highest in the history of the NCAA, narrowly trailing Tennessee's 1998-99 average of 16,565. That mark included a program-record seven sellouts.

The Gamecocks have had at least one sellout of their 18,000-seat Colonial Life Arena for eight straight seasons (excluding COVID-limited 2020-21 season) dating back to the first ever sellout of 18,000 on Feb. 8, 2016. There have been at least five sellouts in each of the last two seasons.

## NATIONAL RANKINGS

### Associated Press Poll (Preseason)

1. UConn	0-0
<b>2. South Carolina</b>	<b>0-0</b>
3. UCLA	0-0
4. Texas	0-0
5. LSU	0-0
6. Oklahoma	0-0
7. Duke	0-0
8. Tennessee	0-0
9. NC State	0-0
10. Maryland	0-0
11. North Carolina	0-0
12. Ole Miss	0-0
13. Michigan	0-0
14. Iowa State	0-0
15. Notre Dame	0-0
16. Baylor	0-0
17. TCU	0-0
18. Southern Cal	0-0
19. Vanderbilt	0-0
20. Louisville	0-0
21. Iowa	0-0
22. Oklahoma State	0-0
23. Michigan State	0-0
24. Richmond	0-0
Kentucky	0-0

### USA Today/WBCA Coaches' Poll (Preseason)

1. UConn	0-0
<b>2. South Carolina</b>	<b>0-0</b>
3. Texas	0-0
4. UCLA	0-0
5. LSU	0-0
6. Duke	0-0
7. Oklahoma	0-0
8. NC State	0-0
9. Tennessee	0-0
10. Maryland	0-0
11. North Carolina	0-0
12. TCU	0-0
13. Notre Dame	0-0
14. Ole Miss	0-0
15. Michigan	0-0
16. Southern Cal	0-0
17. Iowa State	0-0
18. Baylor	0-0
19. Louisville	0-0
20. Kentucky	0-0
21. Vanderbilt	0-0
22. Oklahoma State	0-0
23. Iowa	0-0
24. Ohio State	0-0
25. Kansas State	0-0

## THE STALEY ERA

### Wins

30-Win Seasons .....	8
25-Win Seasons.....	13
20-Win Seasons.....	14
Winning Seasons.....	15

### National Rankings

Weeks in the AP Top 25 .....	254
Weeks in the AP Top 10.....	209
Weeks in the AP Top 3 .....	134
Weeks at AP No. 1 .....	84

### Postseason

NCAA Tournament Appearances.....	13
NCAA Sweet 16s.....	12
NCAA Final Fours.....	7
National Championships.....	3

### In the SEC

Regular-Season Championships.....	9
Regular-Season Top 3 Finishes.....	13
Tournament Championships.....	9

## 2025-26 ROSTER

No.	Name	Pos.	Ht.	Yr.	Hometown/Last School
00	Ta'Niya Latson	G	5-8	Sr.	Miami, Fla./Florida State
1	Maddy McDaniel	G	5-9	So.	Upper Marlboro, Md./Bishop McNamara
5	Tessa Johnson	G	6-0	Jr.	Albertville, Minn./Saint Michael Albertville
8	Joyce Edwards	F	6-3	So.	Camden, S.C./Camden
11	Madina Okot	C	6-6	Sr.	Mumias, Kenya / Mississippi State
15	Adhel Tac	F	6-5	So.	Grand Prairie, Texas/South Grand Prairie
21	Chloe Kitts	F	6-2	Sr.	Oviedo, Fla./DME Academy
24	Ayla McDowell	G	6-1	Fr.	Cypress, Texas/Cypress Springs
25	Raven Johnson	G	5-9	Sr.	Atlanta, Ga./Westlake
30	Maryam Dauda	F	6-4	Sr.	Bentonville, Ark./Arkansas
44	Agot Makeer	G	6-0	Fr.	Thunder Bay, Ontario / Montverde Academy (FL)

**Head Coach:** Dawn Staley

**Assoc. Head Coach:** Lisa Boyer

**Assistant Coaches:** Jollette Law, Wendale Farrow, Mary Wooley, Khadijah Sessions

**Sports Performance Coach:** Molly Binetti; **Athletic Trainer:** Craig Oates

## THE LAST TIME...

### INDIVIDUAL

#### Scored 50 Points

**South Carolina** 51, Jocelyn Penn vs. Stetson, 1/4/03  
**Opponent** Never

#### Scored 40 Points

**South Carolina** 51, Jocelyn Penn vs. Stetson, 1/4/03  
**Opponent** 41, Caitlyn Clark, Iowa, 3/31/23

#### Scored 30 Points

**South Carolina** 31, Zia Cooke at Georgia, 1/2/23  
**Opponent** 31, DeYona Gaston, Auburn, 2/2/25

#### Grabbed 20 Rebounds

**South Carolina** 20, Ashlyn Watkins vs. NC State, 4/5/24  
**Opponent** 24, Teaira McCowan, at Mississippi State, 1/17/19

#### Grabbed 15 Rebounds

**South Carolina** 16, Kamilla Cardoso vs. Georgia, 2/18/24  
**Opponent** 15 by Sarah Strong, vs. UConn, 4/6/25

#### Two Players with 20 or More Points

**South Carolina** Aliyah Boston 21/Zia Cooke 20 at Kentucky, 1/12/23  
**Opponent** Azzi Fudd 24/Sarah Strong 24, vs. UConn, 4/6/25

#### Two Players with 10 or More Rebounds

**South Carolina** Ashlyn Watkins 20/Kamilla Cardoso 11 vs. NC State, 4/5/24  
**Opponent** Angel Reese 13/Aneesah Morrow 10, vs. LSU, 3/10/24

#### Three or More Players with 10 or More Rebounds

**South Carolina** Raven Johnson 15/Kamilla Cardoso 10/Ashlyn Watkins 10 at Tennessee, 2/15/24  
**Opponent** W. Rolle 12/J. Breland 10/L. Broomfield 10, vs. North Carolina, 12/19/10

#### Had 10 Assists

**South Carolina** 10, Chloe Kitts, at Ole Miss, 2/27/25  
**Opponent** 10, Paige Bueckers, UConn, 2/16/25

#### Had Five Steals

**South Carolina** 6, Raven Johnson vs. Auburn, 2/2/25  
**Opponent** 5, Dembele Mama, USF, 12/15/24

#### Had Five Blocked Shots

**South Carolina** 5, Sania Feagin at Ole Miss, 2/27/25  
**Opponent** 5, Rita Igbokwe, vs. Ole Miss, 3/4/23

#### Had 20 Points and 20 Rebounds

**South Carolina** Aliyah Boston (28 pts/22 rebs) vs. N. Carolina, 3/25/22  
**Opponent** Teaira McCowan (26 pts/24 rebs) at Mississippi State, 1/17/19

#### Had a Double-Double

**South Carolina** Joyce Edwards (13 pts/11 rebs) vs. Texas, 4/4/25  
**Opponent** Sarah Strong (24 pts/15 rebs), vs. UConn, 4/6/25

#### Two Players had a Double-Double

**South Carolina** Chloe Kitts (21 pts/13 rebs) / Sania Feagin (12 pts/10 rebs) vs. Presbyterian, 3/22/24  
**Opponent** Angel Reese (15 pts/13 rebs) / Aneesah Morrow (19 pts/10 rebs) vs. LSU, 3/10/24

#### Three or More Players had a Double-Double

**South Carolina** L. Amihere (11 pts/11 rebs) / A. Boston (11 pts/12 rebs) / L. Grissett (13 pts/10 rebs) / V. Saxton (19 pts/12 rebs) vs. Charleston, 11/25/20  
**Opponent** Shakira Austin (10 pts/16 rebs) / Kaila Charles (17 pts/10 rebs) / Channise Lewis (10 pts/12 assts), Maryland, 11/18/18

#### Had a Triple-Double

**South Carolina** Chloe Kitts (16 pts/13 rebs/10 assts) at Ole Miss, 2/27/25  
**Opponent** Never

### TEAM

#### Scored 100 Points

**South Carolina** 101 vs. Florida, 2/13/25  
**Opponent** 103, Clemson, 11/21/03

#### Won by 30 or More Points

**South Carolina** 108-48 (60) vs. Tennessee Tech, 3/21/25  
**Opponent** 66-34 (32), Georgia, 3/4/11

#### Overcame More Than 15-Point Deficit to Win

**South Carolina** 18 (16-34) 6:24 in 2nd qtr. vs. Stanford, 12/21/21\*  
**Opponent** 16 (21-37) 1:43 in 2nd qtr., at Tennessee, 2/18/21

#### Shot 65% or Better from the Field

**South Carolina** .672 (39-58) at Texas A&M, 1/21/24  
**Opponent** Never

#### Shot 60% or Better from the Field

**South Carolina** .606 (40-66) at Arkansas, 2/29/24  
**Opponent** .604 (29-48), Vanderbilt, 1/18/01

#### Shot 50% or Better from the Field

**South Carolina** .509 (29-57) vs. Texas, 4/4/25  
**Opponent** .500 (25-50), Auburn, 2/2/25

#### No Players in Double-Figure Points

**South Carolina** at Auburn, 1/19/12  
**Opponent** at Georgia, 2/6/25

#### Five Players in Double-Figure Points

**South Carolina** vs. Oklahoma, 3/8/25  
**Opponent** vs. Indiana, 3/29/24

#### More Than Five Players in Double-Figure Points

**South Carolina** 6 vs. Texas A&M, 1/9/25  
**Opponent** 5, at UCLA, 11/24/24

#### Faced AP Top-25 Opponent

**Win** 71-67 vs. No. 18 Maryland, 3/28/25  
**Loss** 67-75 at No. 21 Tennessee, 2/18/21

#### Faced AP Top-10 Opponent

**Win** 54-50 vs. No. 7 Duke, 3/30/25  
**Loss** 58-87 vs. No. 7 UConn, 2/16/25

#### Faced AP Top-5 Opponent

**Win** 74-57 vs. No. 5 Texas, 4/4/25  
**Loss** 82-59 vs. No. 3 UConn, 4/6/25

#### Faced AP No. 1 Team

**Win** 64-45 vs. Texas, 3/9/25 (SEC Tournament championship)  
**Loss** 68-93 vs. Baylor, 3/30/19 (NCAA Sweet 16)

#### Overtime Game

**Win** 64-57 at Ole Miss, 2/19/23  
**Loss** 69-70 at Missouri, 12/30/21

#### Double-Overtime Game

**Win** 82-73 at Purdue, 12/16/18  
**Loss** 92-94 at Clemson, 11/19/09

#### South Carolina Was Ranked (AP Poll)

**No. 1** No. 1, 11/18/24  
**Top 5** No. 2, 10/14/25  
**Top 10** No. 6, 2/24/25  
**Top 25** No. 15, 3/19/19

\* indicates program record

TEAM			INDIVIDUAL		
<b>Scoring</b>			<b>Scoring</b>		
<b>Most</b>		<b>Points</b>	<b>Most</b>		<b>Points</b>
1. vs. Saint Peter's, 11/22/16, 1st qtr.		37	1. Kaela Davis at Auburn, 1/5/17, 1st qtr.		19
2. vs. Florida, 2/13/25, 1st qtr.		36	2. Aja Wilson vs. Notre Dame, 11/26/17, 4th qtr.		18
at Kentucky, 1/12/23, 4th qtr.		36	3. Alexis Jennings at Florida, 2/17/19, 3rd qtr.		17
vs. Alabama, 2/3/22, 1st qtr.		36	4. Zia Cooke at Georgia, 1/2/23, 4th qtr.		15
at Vanderbilt, 1/12/20, 3rd qtr.		36	Aliyah Boston vs. Florida, 12/31/20, 2nd qtr.		15
vs. Alabama State, 3rd qtr.		36	M. Herbert Harrigan vs. TX A&M, 3/1/20, 1st qtr.		15
			Kaela Davis vs. Quinnipiac, 3/25/17, 3rd qtr .		15
			Tina Roy vs. Arkansas, 1/3/16, 3rd qtr.		15
<b>Fewest</b>		<b>Points</b>	<b>Rebounding</b>		<b>Rebs</b>
1. vs. App State, 12/5/18, 4th qtr.		5	<b>Most</b>		<b>Rebs</b>
2. vs. Oregon State, 3/23/21, 4th qtr.		6	1. Kamilla Cardoso vs. Ole Miss, 3/4/23, 2nd qtr.		9
vs. Indiana, 11/28/19, 4th qtr.		6	Aliyah Boston vs. N. Carolina, 3/25/22, 4th qtr.		9
vs. St. John's, 11/25/17, 2nd qtr.		6	LeLe Grissett at Vanderbilt, 1/14/21, 4th qtr.		9
vs. Stanford, 3/31/17, 2nd qtr.		6	Aliyah Boston vs. UConn, 2/10/20, 1st qtr.		9
vs. UCLA, 12/18/16, 1st qtr.		6	Aliyah Boston vs. Arkansas, 1/9/20, 1st qtr.		9
			Alaina Coates at Arkansas, 2/5/17, 1st qtr.		9
			Alaina Coates at Georgia, 1/26/17, 2nd qtr .		9
<b>Fewest Allowed</b>		<b>Points</b>			
1. vs. Texas, 3/30/21, 4th qtr.		0			
at Vanderbilt, 1/14/21, 2nd qtr.		0			
at Ole Miss, 1/30/20, 1st qtr.		0			
4. at Cal Poly, 11/22/22, 1st qtr.		2			
vs. Howard, 3/18/22, 2nd qtr.		2			
vs. Howard, 3/18/22, 1st qtr.		2			
vs. UConn, 2/10/20, 1st qtr.		2			
<b>Most Allowed</b>		<b>Points</b>			
1. vs. Baylor, 12/2/18, 1st qtr.		32			
at Maryland, 11/13/17, 4th qtr.		32			
vs. Kentucky, 2/26/17, 4th qtr.		32			
4. vs. Arkansas, 3/8/19, 3rd qtr.		30			
vs. Connecticut, 3/26/18, 1st qtr.		30			
vs. Syracuse, 3/25/16, 4th qtr.		30			
<b>Margin of Difference</b>					
<b>Lead</b>	<b>Score</b>	<b>Margin</b>			
1. vs. Alabama State, 11/5/19, 3rd qtr.	36-9	+37			
2. vs. App State, 11/17/19, 1st qtr.	35-3	+32			
3. vs. Charleston, 11/25/20, 3rd qtr.	34-8	+26			
vs. USC Upstate, 11/21/19, 3rd atr.	33-7	+26			
vs. Arkansas, 1/3/16, 2nd qtr.	35-9	+26			
5. vs. Saint Peter's, 11/22/16, 1st qtr.	37-12	+25			
<b>Deficit</b>	<b>Score</b>	<b>Margin</b>			
1. vs. UConn, 2/1/18, 2nd qtr.	8-29	-21			
2. at Tennessee, 2/15/18, 3rd qtr.	9-29	-20			
3. vs. Baylor, 12/2/18, 1st qtr.	13-32	-19			
at Mississippi State, 2/5/18, 4th qtr.	9-28	-19			
5. vs. Indiana, 11/28/19, 4th qtr.	6-24	-18			
vs. Connecticut, 3/26/18, 1st qtr.	12-30	-18			
<b>Field Goals</b>					
<b>Made</b>		<b>FGM</b>			
1. at Florida, 2/27/20, 1st qtr.		15			
vs. Saint Peter's, 11/22/16, 1st qtr.		15			
3. vs. Florida, 2/13/25, 1st qtr.		14			
vs. Coastal Carolina, 12/21/22, 1st qtr.		14			
vs. Alabama, 2/3/22, 1st qtr.		14			
vs. App State, 11/17/19, 1st qtr.		14			
vs. Notre Dame, 11/26/17, 4th qtr.		14			
vs. Arkansas, 1/3/16, 2nd qtr.		14			
<b>Attempts</b>		<b>FGA</b>			
1. vs. Arkansas, 3/7/20, 4th qtr.		28			
2. vs. Arkansas, 2/20/25, 3rd qtr.		25			
vs. Oklahoma, 1/19/25, 2nd qtr.		25			
vs. Purdue, 11/30/24, 1st qtr.		25			
vs. Howard, 3/18/22, 1st qtr.		25			
vs. Arkansas, 1/9/20, 3rd qtr.		25			
<b>Highest Percentage</b>			<b>FGM-A</b>	<b>Pct</b>	
1. vs. Vanderbilt, 3/7/25 4th qtr.		10-11	.909		
2. vs. Kentucky, 3/5/16, 4th qtr.		11-13	.846		
3. at Georgia, 1/2/23, 4th qtr.		5-6	.833		
4. at Kentucky, 1/21/18, 3rd qtr.		9-11	.818		
5. vs. Belmont, 3/22/19, 3rd qtr.		13-16	.813		
vs. Quinnipiac, 3/25/17, 3rd qtr.		13-16	.813		
<b>Lowest Percentage</b>			<b>FGM-A</b>	<b>Pct</b>	



# Head Coach DAWN STALEY

**18th Season at South Carolina**  
**26th Season in Career**

Since thrusting South Carolina into the national spotlight when she was hired in May 2008, Dawn Staley has made the Gamecocks a mainstay in the battle for SEC and national championships. The Naismith Memorial Basketball Hall of Fame inductee as a player is angling for another induction as a coach with her standing as one of five head coaches with at least three women's basketball National Championships and the only Black basketball head coach with multiple national titles, one of five head coaches to lead an undefeated team to a National Championship, and the first Black head coach of the USA Basketball Senior National Team.

In Staley's 17 seasons at the helm of the Gamecocks, highlights include:

- Three National Championships (2017, 2022, 2024)
- Seven NCAA Final Fours in the last 10 tournaments (2015, 2017, 2021, 2022, 2023, 2024, 2025)
- Ranking in the AP Top 25 every week since Dec. 10, 2012, the second-longest active streak in the nation and ninth-longest all-time (248)
- 38 straight weeks at No. 1 in the AP Poll, just the third program to go wire-to-wire in back-to-back seasons
- 86 total weeks at No. 1 in the AP Poll, the third-most in the history of that poll
- Eight 30-win seasons, including a program-record 38 wins in 2023-24
- Nine SEC regular-season championships (2014, 2015, 2016, 2017, 2020, 2022, 2023, 2024, 2025)
- Nine SEC Tournament titles (2015, 2016, 2017, 2018, 2020, 2021, 2023, 2024, 2025)
- SEC-record 57 consecutive league regular-season victories, which ranks sixth in NCAA history for conference win streaks
- Four top-two recruiting classes (#2 in 2024, #1 in 2021, #1 in 2019, #2 in 2014)
- 11 NCAA Attendance titles (2015, 2016, 2017, 2018, 2019, 2020, 2021\*, 2022, 2023, 2024, 2025)
- 18 WNBA Draft selections, including 11 first-round and two overall No. 1 picks

While her coaching career is in full bloom, Staley is still recognized for her body of work as a one of the most decorated participants in United States women's basketball history. The Naismith Memorial Basketball Hall of Fame solidified that legacy with her enshrinement as part of the Class of 2013. The Phoenix Club of Philadelphia established the Dawn Staley Award recognizing the nation's top guard in women's Division I basketball in 2013 as well. Staley was inducted into the Women's Basketball Hall of Fame as part of the Class of 2012, and she was part of the FIBA Hall of Fame Class of 2025.

In 25 seasons as a head coach, Staley has led her college teams to 15 25-win seasons, a total of 21 postseason appearances (two WNIT) and 239 weeks in the Associated Press top 10, including 86 in the No. 1 spot – the third most times in the top spot in the history of that poll. Her .773 winning percentage (647-190) ranks seventh in the nation among active head coaches with at least 15 years of experience and ninth all-time.

Also a force in USA Basketball, Staley was named the U.S. Women's National Team head coach for 2017-21, leading the U.S. to 2018 FIBA World Cup gold to earn USA National Coach of the Year honors that year, adding gold medals at the 2019 and 2021 FIBA AmeriCups and stretching the U.S. Olympic gold medal streak to seven straight at the 2020 Tokyo Olympic Games, for which she again earned Coach of the Year honors. Prior to that appointment, Staley led three other U.S. teams to gold medals – 2015 FIBA U19 World Championships, 2014 FIBA U18 Americas Championship, 2007 Pan Am Games – and served as an assistant on the Senior National Team 2006-08 and again 2014-16, during which the U.S. claimed gold in the 2014 FIBA World Championship and the 2008 and 2016 Olympics.

## STALEY AT SOUTH CAROLINA YEAR-BY-YEAR

Year	School	Record	Conf. Rec.	Conf. Finish	Postseason
2008-09	South Carolina	10-18	2-12	11th	
2009-10	South Carolina	14-15	7-9	T-7th	
2010-11	South Carolina	18-15	8-8	T-5th	WNIT 2nd Round
2011-12	South Carolina	25-10	10-6	T-4th	NCAA Sweet 16
2012-13	South Carolina	25-8	11-5	T-4th	NCAA 2nd Round
2013-14	South Carolina	29-5	14-2	1st	NCAA Sweet 16
2014-15	South Carolina	34-3	15-1	T-1st	SEC Tourn. Champ./NCAA Final Four
2015-16	South Carolina	33-2	16-0	1st	SEC Tourn. Champ./NCAA Sweet 16
2016-17	South Carolina	33-4	14-2	1st	SEC Tourn. Champ./NCAA Champ.
2017-18	South Carolina	29-7	12-4	T-2nd	SEC Tourn. Champ./NCAA Elite Eight
2018-19	South Carolina	23-10	13-3	2nd	NCAA Sweet 16
2019-20	South Carolina	32-1	16-0	1st	SEC Tourn. Champ./NCAA canceled)
2020-21	South Carolina	26-5	14-2	2nd	SEC Tourn. Champ./NCAA Final Four
2021-22	South Carolina	35-2	15-1	1st	NCAA Champion
2022-23	South Carolina	36-1	16-0	1st	SEC Tourn. Champ./NCAA Final Four
2023-24	South Carolina	38-0	16-0	1st	SEC Tourn., Champ./NCAA Champ
2024-25	South Carolina	35-4	15-1	T-1st	SEC Tourn. Champ./NCAA Runner-Up
2025-26	South Carolina	0-0			
<b>At Temple</b>	<b>8 seasons</b>	<b>172-80</b>	<b>99-25</b>	<b>3 A-10 Titles</b>	<b>4 A-10 Tourn. Titles, 6 NCAA appearances</b>
<b>At SC</b>	<b>18th season</b>	<b>475-110</b>	<b>214-56</b>	<b>9 SEC Titles</b>	<b>9 SEC Trn. Titles, 3 NCAA Titles</b>
<b>Career</b>	<b>26th season</b>	<b>647-190</b>	<b>313-81</b>		

## STALEY HIGHLIGHTS

### Coaching Highlights

#### College

- 18 NCAA Tournament Appearances (12 at SC)
- 3x NCAA National Champion (2017, 2022, 2024)
- 7 30-Win Seasons
- 10 Regular-Season Conference Titles (SEC 2014, 2015, 2016, 2017, 2020, 2022, 2023, 2024, 2025; A-10 2008)
- 12 Conference Tournament Titles (SEC 2015, 2016, 2017, 2018, 2020, 2021, 2023, 2024; A-10 2002, 2004, 2005, 2006)
- 5-time National Coach of the Year (2014, 2020, 2022, 2023)
- 4-time WBCA Region Coach of the Year (Region 3 2014, 2015, 2016; Region 1 2005)
- 9x Conference Coach of the Year (SEC 2014, 2015, 2016, 2020, 2022, 2023, 2024; A-10 2004, 2005)

#### USA Basketball

- Senior National Team Head Coach (2017-21) – Tokyo Olympics gold (2020); FIBA AmeriCup gold (2021); co-National Coach of the Year (2021); FIBA AmeriCup gold (2019), FIBA World Cup gold (2018), National Coach of the Year (2018)
- Senior National Team Asst. Coach (2006-08, 2014-16) – Rio Olympics gold medal (2016), FIBA World Championship gold medal (2014), Beijing Olympics gold medal (2008), FIBA Americas Championship gold medal (2007), FIBA World Championship bronze medal (2006)
- U19 National Team Head Coach – FIBA U19 World Championship gold medal (2015), co-National Coach of the Year (2015)
- U18 National Team Head Coach – FIBA U18 Americas Championship gold medal (2014)
- Pan Am Games Head Coach – Gold medal (2007)

### Playing Highlights

#### U.S. Professional – 11 seasons

- Five-time WNBA All-Star (2001, 2002, 2003, 2005, 2006)
- Two-time ABL All-Star (1997, 1998)
- WNBA All-Decade Team

#### USA Basketball

- Olympic gold medalist (1996, 2000, 2004)
- Flag bearer for U.S. in Olympic Games Opening Ceremony (2004)
- Two-time USA Basketball Female Athlete of the Year (1994, 2004)

#### College – Virginia (1989-92)

- Kodak All-America (1990, 1991, 1992)
- Honda-Broderick Cup Award for Collegiate Female Athlete of the Year (1991)
- Two-time ACC Player of the Year (1991, 1992)
- NCAA Tournament MOP (1991)

### Other Notables

- FIBA Hall of Fame, Class of 2025
- Naismith Mem. Basketball Hall of Fame, Class of 2013
- Order of the Palmetto Recipient (2013)
- Women's Basketball Hall of Fame, Class of 2012
- Two-time Wanamaker Award (1997, 2005)
- Henry P. Iba Citizenship Award (2007)



At the helm of the Gamecocks over the last 17 seasons, Staley has been named National Coach of the Year five times (2014, 2020, 2022, 2023, 2024). Her 2020 unanimous selection made her the first former Naismith Player of the Year to earn the Naismith Coach of the Year award, and she became the first men's or women's coach to claim the award in three straight seasons 2022-24. She is a seven-time SEC Coach of the Year and was the 2012 BCA Female Coach of the Year. She is the only Gamecock basketball coach – men's or women's – to amass 300 victories at South Carolina and became the fastest coach to 200 wins in program history, needing just 277 games at South Carolina to reach the plateau. She is the program's all-time winningest coach with 475 wins, a .812 (475-110) winning percentage and a program-record 14 postseason appearances.

In the vaunted SEC, Staley's 214 league wins are the most among active league coaches and third all-time, trailing just Women's Basketball Hall of Fame Inductees Andy Landers (Georgia, 273) and Pat Summitt (Tennessee, 306). She was the second fastest to 200 league wins (255 games), trailing only Summitt at 229. Her .793 SEC winning percentage (214-56) is second only to Summitt (.874) in league history. Her Gamecocks are the only SEC program with multiple 16-0 seasons in league history, hitting that mark four times (2015-16, 2019-20, 2022-23, 2023-24). Staley's back-to-back SEC undefeated seasons helped the Gamecocks to an SEC-record 57-game win streak in league play, which ranks sixth in NCAA history for conference win streaks.

In addition to coaching two National Players of the Year, two National Defensive Players of the Year and a National Freshman of the Year, Staley has helped 13 Gamecocks collect 29 All-America selections, three to pick up seven SEC Player of the Year honors, four to earn SEC Defensive Player of the Year recognition a total of eight times, three to SEC 6th Player of the Year honors and six to capture SEC Freshman of the Year. She has coached 23 Gamecocks to All-SEC honors a combined 44 times, including 22 first-team selections. Since her first Gamecock was selected in the 2015 WNBA Draft, a total of 18 South Carolina have been chosen, which is the second-most of any program in that timeframe. Of those 18, 11 have been first-round picks, highlighted by two No. 1 overall picks since 2018. Three Gamecocks have been named WNBA Rookie of the Year and have amassed 13 All-Star selections. Aja Wilson went on to become a three-time WNBA MVP and two-time WNBA Defensive Player of the Year.



## SOUTH CAROLINA DAWN STALEY ERA SINGLE-GAME RECORDS

### Scoring

Most	Points
1. vs. Charleston, 11/25/20	119
2. vs. Maryland, 11/12/23	114
3. vs. Savannah State, 12/14/14	111

Fewest	Points
1. at Stanford, 11/26/10	32*
2. vs. Georgia, 3/4/11	34
3. vs. Mississippi State, 3/5/09=	39

Fewest Allowed	Points
1. vs. Mississippi Valley State, 11/24/23	19*
2. vs. Howard, 3/18/22	21
vs. South Carolina State, 12/14/11	21

Most Allowed	Points
1. at Connecticut, 2/11/19	97
2. vs. Arkansas, 3/8/19	95
3. 3x, most recent, vs. Baylor, 12/2/18	94

Margin of Victory	Score	Margin
1. vs. Miss. Valley State, 11/24/23	101-19	+82
2. vs. Charleston, 11/25/20	119-38	+81
3. 3x, most recent, vs. Presby., 12/16/23	99-29	+70

Margin of Defeat	Score	Margin
1. at Stanford, 11/26/10	32-70	-38
2. vs. Georgia, 3/4/11	34-66	-32
3. vs. Stanford, 12/19/08	47-78	-31

### Field Goals

Made	FGM
1. vs. Clemson, 11/16/23	44
2. 4x, most recent, vs. Tenn. Tech, 3/21/25	43

Attempts	FGA
1. vs. Clemson, 11/16/23	83
vs. Maryland, 11/12/23	83
3. 2x, most recent, vs. Arkansas, 2/20/25	82

Highest Percentage (Min. 40 FGA)	FGM-A	Pct
1. vs. Morgan State, 12/6/23	41-60	.683
2. at Texas A&M, 1/21/24	39-58	.672
3. vs. Tennessee Tech, 3/21/25	43-64	.672

Lowest Percentage (Min. 40 FGA)	FGM-A	Pct
1. at Stanford, 11/26/10	12-55	.218
2. vs. Georgia, 3/4/11	12-52	.231
3. at Florida, 1/20/13	15-64	.234

Lowest %age Allowed (Min. 40 FGA)	FGM-A	Pct
1. vs. Miss. Valley State, 11/24/23	8-67	.119*
2. vs. South Carolina State, 12/14/11	6-48	.125
3. vs. Howard, 3/18/22	8-54	.148

Highest %age Allowed (Min. 40 FGA)	FGM-A	Pct
1. vs. UConn, 3/26/18	37-63	.587
2. vs. UConn, 2/11/19	37-65	.569
3. 2x, most recent vs. UConn, 12/28/08	35-62	.565

### 3-Point Field Goals

Made	3FGM
1. vs. Minnesota, 12/11/16	16
2. vs. Temple, 12/21/18	15
3. 2x, most recent, vs. App. State, 12/5/18	14

Attempts	3FGA
1. vs. Howard, 3/18/22	38
2. vs. Minnesota, 12/11/16	33
3. vs. Syracuse, 3/25/16	32

Percentage (Min. 5 3FGA)	3FGM-A	Pct
1. vs. ETSU, 11/22/18	11-16	.688
2. 4x, most recent, at UCLA, 11/24/24	8-12	.667

### Free Throws

Made	FTM
1. vs. Savannah State, 12/14/14	34
vs. Oregon State, 3/25/14	34
3. 3x, most recent, vs. Missouri, 1/10/16	32

Attempts	FTA
1. at Mississippi State, 1/6/13	50
2. vs. Savannah State, 12/28/13	48
3. 2x, most recent, vs. Charleston, 11/25/20	47

Percentage (Min. 10 FTA)	FTM-A	Pct
1. vs. Florida, 2/13/25	21-22	.955
2. vs. Alabama, 1/31/21	19-20	.950
3. vs. Quinnipiac, 3/25/17	18-19	.947

Rebounding	Rebs
Total	
1. vs. Arkansas, 1/22/23	74
2. vs. Clemson, 11/16/23	73
vs. Charleston, 11/25/20	73

Margin	Rebs	Margin
1. vs. Arkansas, 1/22/23	74-17	+57
2. vs. Hampton, 11/27/22	62-15	+47
3. vs. Clemson, 11/16/23	73-27	+46

Offensive	Off. Rebs
1. vs. Arkansas, 1/22/23	32
2. vs. Tennessee, 2/20/22	31
3. 2x, most recent, vs. Purdue, 11/30/24	30

### Turnovers

Fewest	TOs
1. vs. Purdue, 11/30/24	4
at Tennessee, 2/2/12	4
2. 10x, most recent, at Ole Miss, 1/4/18	5

Most	TOs
1. at Wake Forest, 12/3/08	32
2. 3x, most recent, at Ole Miss, 2/25/16	29

### Assists

1. at Kentucky, 2/25/24	30
vs. Clemson, 11/16/23	30
vs. Maryland, 11/12/23	30

### Steals

1. at Alabama State, 11/11/18	22
2. 3x, most recent, vs. Alabama St., 11/10/17	21

### Blocked Shots

1. vs. Presbyterian, 12/16/23	17*
vs. Appalachian State, 11/17/19	17*
3. 5x, most recent, vs. South Dak. St., 11/20/23	16

\* indicates also a school record



### ALL-TIME SELLOUTS

18,478	Georgia, 2/18/24
18,167	UConn, 2/11/24
18,000	Kentucky, 3/2/25
18,000	UConn, 2/16/25
18,000	Auburn, 2/2/25
18,000	LSU, 1/24/25
18,000	Oklahoma, 1/19/25
18,000	Texas, 1/12/25
18,000	East Carolina, 11/17/24
18,000	Tennessee, 3/3/24
18,000	Ole Miss, 2/5/24
18,000	Vanderbilt, 1/28/24
18,000	Georgia, 2/26/23
18,000	LSU, 2/12/23
18,000	Tennessee, 2/20/22
18,000	Texas A&M, 3/1/20
18,000	UConn, 2/10/20
18,000	Mississippi State, 3/3/19
18,000	UConn, 2/1/18
18,000	Kentucky, 2/26/17
18,000	UConn, 2/8/16

### YEAR-BY-YEAR RECORD

Year	Record	Pct.	Att. Avg.
2002-03	14-2	.875	3,244
2003-04	5-6	.455	1,828
2004-05	8-9	.471	1,764
2005-06	12-5	.706	1,455
2006-07	15-5	.750	1,845
2007-08	12-6	.667	1,802
2008-09	6-9	.400	2,793
2009-10	7-5	.583	3,442
2010-11	14-5	.737	2,996
2011-12	12-3	.800	3,139
2012-13	12-3	.800	4,082
2013-14	16-0	1.000	6,371
2014-15	16-0	1.000	12,293
2015-16	16-1	.941	14,364
2016-17	15-1	.938	12,277
2017-18	15-2	.882	13,239
2018-19	11-4	.733	11,542
2019-20	15-0	1.000	12,185
2020-21	10-1	.909	3,500*
2021-22	16-0	1.000	12,268
2022-23	17-0	1.000	12,942
2023-24	17-0	1.000	16,067
2024-25	16-1	.941	16,437
2025-26	0-0		
<b>Total</b>	<b>297-68</b>	<b>.814</b>	<b>7,722*</b>
<b>Staley Era</b>	<b>231-35</b>	<b>.868</b>	<b>9,951*</b>

\* 2020-21 attendance not counted in average or streaks due to COVID-19 restrictions

In women's basketball, Colonial Life Arena has become one of the most feared places to play as enormous crowds fill the building with passion for the Gamecocks.

The state of South Carolina has rallied around head coach Dawn Staley's program in unprecedented numbers as the Gamecocks have led the nation in average attendance in each of the last 10 seasons and boast 21 sellouts (18,000) in the last 10 seasons of full capacity arenas.

Colonial Life Arena is more than just the home of South Carolina men's and women's basketball, though. It is also a thriving entertainment venue that the city of Columbia and its surrounding metropolitan area are able to enjoy throughout the year.

Colonial Life Arena is the largest arena in the state of South Carolina with 18,000 seats, and the 10th-largest on-campus basketball facility in the nation. Located on the beautiful University of South Carolina campus, this one-of-a-kind facility features 41 suites, four entertainment suites, and the Frank McGuire Club, a full-service hospitality room that has a capacity of 300. The state-of-the-art facility also features plush seating, a technologically advanced sound system and a one-of-a-kind selection of unique concession foods that will delight fans of all ages.

In Summer 2017, a 12-display center-hung video board and ribbon boards were added to the arena bowl at a cost of \$4.2 million. The center-hung board features four convex-curved main displays that measure approximately 12' x 20' and can show any combination of live video, instant replays, statistics and game information, graphics and animations, and sponsorship messages.

The Arena has hosted numerous sold out shows, including Barnum and Bailey Circus, Paul McCartney, country superstars Kenny Chesney and Taylor Swift, WWE Wrestling, Kanye West and numerous other acts.

The largest building ever constructed at the University of South Carolina at 342,000 square feet, the Arena has an intimate double-deck design that puts every seat close to the action. The cantilever of the upper deck over the lower deck extends further than any other arena of its size with great sight lines.

Two spacious locker rooms for Gamecock men's and women's basketball include team meeting rooms, recruiting rooms, coaches locker rooms and an athletic training room.

### COLONIAL LIFE ARENA NOTABLES

- 10-Time National Attendance Leader (2015-present)
- NCAA Tournament Host in 2015, 2016, 2017, 2018, 2022, 2023, 2024
- 139 consecutive regular-season games with at least 10,000 fans (Jan. 2, 2015)\*
- 21 official sellouts (18,000) since 2015-16 season
- 6 undefeated seasons
- Longest home win streak – 71 games (12/17/20-2/13/25)

\* 2020-21 attendance not counted in average or streaks due to COVID-19 regulation restrictions

*"It is a beautiful thing to see unfold because a lot of people really didn't think it could get done. I tip my hat to Gamecock Nation for making this a wonderful place and creating a home court advantage that allows us to win close basketball games."*

– South Carolina Head Coach Dawn Staley

## EXHIBITION STATS

	GP	GS	Min	Avg	FG	FGA	Pct	3FG	FGA	Pct	FT	FTA	Pct	Off	Def	Tot	Avg	PF	FO	A	TO	Blk	Stl	Pts	Avg
Joyce Edwards	2	2	54	27.0	13	22	.591	2	21.000	11	13	.846	6	11	17	8.5	2	0	5	3	2	5	39	19.5	
Ta'Niya Latson	2	2	49	24.5	11	22	.500	1	4.250	10	10	1.000	0	8	8	4.0	2	0	6	2	3	3	33	16.5	
Madina Okot	2	2	44	22.0	12	28	.429	0	3.000	4	5	.800	7	14	21	10.5	5	0	2	4	6	5	28	14.0	
Tessa Johnson	2	2	47	23.5	9	18	.500	4	12.333	2	2	1.000	1	12	13	6.5	5	0	3	0	1	1	24	12.0	
Agot Makeer	2	0	45	22.5	7	15	.467	0	4.000	6	10	.600	2	6	8	4.0	2	0	6	6	1	5	20	10.0	
Maryam Dauda	2	0	37	18.5	7	10	.700	0	2.000	2	2	1.000	2	3	5	2.5	4	0	1	0	2	1	16	8.0	
Raven Johnson	2	2	46	23.0	6	13	.462	1	6.167	2	4	.500	3	1	4	2.0	1	0	8	1	0	7	15	7.5	
Maddy McDaniel	2	0	39	19.5	5	10	.500	0	2.000	3	6	.500	3	4	7	3.5	3	0	7	2	0	2	13	6.5	
Ayla McDowell	1	0	15	15.0	3	6	.500	0	1.000	0	0	—	2	0	2	2.0	1	0	1	0	0	1	6	6.0	
Adhel Tac	2	0	24	12.0	4	5	.800	0	0	—	1	2	.500	2	8	10	5.0	3	0	1	1	2	1	0	4.5
Team														3	4	7									
TOTALS	2		400		77	149	.517	8	36.222	41	54	.759	31	71	102	51.0	28	0	40	19	17	31	203	101.5	
Opponents	2		400		40	128	.313	9	50.180	24	35	.686	23	45	68	34.0	38	0	21	39	8	11	113	56.5	

## EXHIBITION BOX SCORES



Official Basketball Box Score - Final  
**Anderson (SC) at South Carolina**  
 10/24/25 Colonial Life Arena, Columbia  
 2025-26 Women's Basketball

Game Time: 7:00 PM  
Game Duration: 1:42

**Officials:** Kristen Bell, Roy Jackson, Nic Cappe

Anderson (SC) - 31		Record: 0-0																			
NO.	Name	Min	FG		3P	FT	Rebounds		Fouls		TP	AS	TO	ST	Blocks		+/-	Shooting By Period			
			M	A			M	A	OR	DR					PF	FO		BS	BA	1 <sup>st</sup>	FG
15	Rose Gravel	F 18:44	2-7	0-2	0-0	2	6	8	4	0	4	0	3	0	2	3	-48	1 <sup>st</sup>	FG	3-19	15.8%
1	Ciara Harris	G 3:54	12-17	0-9	0-0	1	4	5	5	2	10	0	5	2	0	2	-63	3 <sup>PT</sup>	0-11	0.0%	
3	Jayla Cal	G 26:24	0-8	0-0	0-0	0	1	1	2	0	5	6	0	0	1	1	-61	FT	0-0		
24	Kyla Can	G 26:32	2-11	0-6	0	3	3	4	3	4	1	1	0	0	1	1	-59	2 <sup>nd</sup>	FG	1-12	8.3%
44	Ashlyn Sheridan	G 23:10	3-10	1-5	0-0	1	0	1	0	2	0	1	2	0	1	1	-58	3 <sup>PT</sup>	0-5	0.0%	
3	Kyla Barrett	F 16:50	0-0	0-0	2-2	2	2	2	1	2	0	6	0	0	0	0	-52	FT	0-2	0.0%	
3	Jessica Cost	11:48	0-4	0-2	0-0	1	1	2	1	0	0	0	0	0	1	1	-14	3 <sup>rd</sup>	FG	7-16	38.9%
00	Amiya Ta	17:09	0-2	0-0	0-0	0	0	0	2	1	0	0	0	0	0	1	-33	FT	0-0	0.0%	
20	LaKeyah Barnes	11:19	0-2	0-0	2-4	0	1	1	0	3	2	0	1	0	0	2	-20	3 <sup>rd</sup>	FG	1-5	20.0%
4	Ashley Him	04:23	0-1	0-0	0-0	0	0	0	0	0	1	0	0	0	0	0	-8	4 <sup>th</sup>	FG	2-14	14.3%
13	Ashlynn Bleisath	03:17	1-1	0-0	0-0	0	0	0	1	0	2	0	0	0	1	0	-8	3 <sup>PT</sup>	0-4	0.0%	
Team						4	1	5	0	0	0	0	0	0	0	1	-8	FT	4-6	100%	
Totals			13:63	1-25	4-6	0	9	18	20	10	31	7	24	2	5	11	-81	GM FG	13-63	20.6%	
																	3 <sup>PT</sup>	1-25	4.0%		
																	FT	4-6	66.7%		
																	Major Fouls: NONE				

Major Fouls: NONE

Dead Ball Rebounds: 1, 0

South Carolina - 112			Record: 0-0														
NO.	NAME	Min	FG	M-A	FT	Rebounds	Fouls	TP	AS	TO	ST	Blocks		+/-			
						OR	DR	TO				BS	BA				
8	Joyce Edwards	F 26:19	9-13	2-2	7-8	5	3	8	1	6	27	3	0	3	1	57	
11	Madina Okot	C 22:22	8-17	0-1	6-6	1	4	11	15	1	2	1	2	3	6	47	
00	Ta'Niya Latson	C 23:21	4-10	0-2	1-1	0	7	7	2	14	3	0	2	2	0	42	
5	Tessa Johnson	C 22:25	2-7	1-5	0-0	1	5	6	1	0	5	1	0	1	0	52	
25	Raven Johnson	G 23:35	4-6	1-3	1-2	1	1	2	0	1	10	3	1	4	0	41	
1	Maddy McDaniel	16:19	2-6	0-2	0-1	1	3	4	2	2	4	3	1	1	0	32	
44	Agot Makeke	24:27	5-9	0-1	6-6	1	5	6	1	4	16	4	1	5	0	49	
15	Adhel Tac	11:41	3-3	0-0	1-2	2	6	8	1	1	7	1	1	1	0	25	
24	Alay McDowell	14:53	3-6	0-0	0-0	2	0	2	1	1	6	1	0	1	0	27	
30	Maryam Dauda	18:38	3-4	0-1	0-0	0	0	0	0	0	6	0	1	1	0	33	
Team						2	1	3	0	0	0	0					
Totals			43-81	4-18	22-26	19	42	61	10	20	112	20	6	22	11	5	81

Shooting By Period		
1 <sup>st</sup> FG	12-22	54.5%
3PT%	3-6	50.0%
FT%	4-5	80.0%
2 <sup>nd</sup> FG	13-26	50.0%
3PT%	0-5	0.0%
FT%	4-5	80.0%
3 <sup>rd</sup> FG	8-14	57.1%
3PT%	1-5	20.0%
FT%	7-8	87.5%
4 <sup>th</sup> FG	10-19	52.6%
3PT%	0-2	0.0%
FT%	7-8	87.5%
GM FG	43-81	53.1%
3PT%	4-18	22.2%

Major Fouls: NONE

Major Fouls: NONE

Dead Ball Rebounds: 4, C

	AND		USC		Points from		AND		USC		Period by Period Scoring				
Biggest lead	0 (1 <sup>st</sup> 10:00)		81 (4 <sup>th</sup> 1:37)		Turnovers	4	34				1st	2nd	3rd	4th	TOT
Best Scoring Run	8 (3 <sup>rd</sup> 7:10)		19 (3 <sup>rd</sup> 9:26)		Paint	12	68		AND	6	2	15	8	31	
Lead Changes	0				Second Chance	0	19								
Times Tied	0				Fast Breaks	6	52		USC	31	30	24	27	112	
Time with Lead	00:00		39:46		Bench	6	39								



Official Basketball Box Score - Final  
**North Carolina at South Carolina**  
 10/30/25 State Farm Arena, Atl ga  
 2025-26 Women's Basketball

Game Time: 6:00 PM  
Game Duration: 1:48  
Attendance: 500

**Officials:** Pualani Spurlock, Angelica Suffren, Maj Forsberg

North Carolina - 82			Record: 0-0																				
NO.	Name	Min	FG			3P	FT	Rebounds		Fouls		TP	AS	TO	ST	Blocks	+/-	Shooting By Period					
			M-A	M-A	M-A			OR	DR	TO	PF										FD		
2	Nyla Harris	F 27:26	6-9	0-1	2-3	5	5	10	4	2	14	2	2	1	0	1	-15	1 <sup>st</sup> GM	6-17	35.3%			
21	Ciera Toomey	F 28:27	4-9	1-4	2-4	2	6	8	3	2	11	2	0	1	1	1	-2	3PT%	2-8	25.0%			
0	Clarie Grant	G 30:52	3-8	2-5	2-2	0	1	1	1	2	10	2	4	1	0	0	-13	FT%	5-8	63.3%			
17	Elia Astakhova	F 27:04	3-10	0-0	3-4	1	1	1	1	3	10	1	1	0	0	0	-1	2 <sup>nd</sup> GM	5-18	27.8%			
24	Indya Nwira	G 29:53	3-9	1-3	7-10	2	3	5	3	14	3	4	3	1	1	7	3	3PT%	1-6	16.7%			
26	Taissa Queiroz	04:46	1-3	1-2	0-0	0	0	0	1	0	3	0	1	0	0	0	-8	FT%	8-10	80%			
4	Laila Hull	11:23	1-2	1-1	0-0	0	1	1	1	0	3	0	1	0	1	1	-7	3 <sup>rd</sup> GM	6-13	46.2%			
7	Nyla Brooks	22:58	4-11	2-5	2-4	2	5	7	2	2	12	1	1	2	0	1	-7	3PT%	4-7	57.1%			
1	Jordan Zubich	03:28	0-0	0-0	0-0	0	0	0	0	0	0	1	0	0	0	0	-2	FT%	2-5	40%			
3	Taliyah Henderson	10:54	2-4	0-0	2-2	1	2	3	2	2	6	0	1	0	0	1	-6	4 <sup>th</sup> GM	8-15	53.3%			
5	Liza Astakhova	02:49	0-0	0-0	0-0	0	0	0	0	0	0	1	1	0	0	0	-7	3PT%	1-4	25.0%			
Team						2			2			4			0			FT%			5-8	62.5%	
Totals			27:65	8:25	20:29	14	26	40	18	18	82	14	5	9	3	6	-9		GM FG:	27:65	41.5%		
																		Major Fouls: NONE					
																		3PT%				8-25	32.0%
																		FT%				20:29	69.0%

**Major Fouls: NONE**

Dead Ball Rebounds: 4, 0

South Carolina - 91				Record: 0-0																		
NO.	Name		Min	FG		3P		FT		Rebounds		Fouls		TP	AS	TO	ST	Blocks		+/-		
				M/A	P/A	M/A	P/A	M/A	P/A	OR	DR	TOT	PF					FD	BS		BA	
8	Joyce Edwards	F	28:11	4-9	0-0	4-5		1	8	9	1	4	12	2	3	2	1	1	12	1 <sup>st</sup>	FG% 10-19 52.6%	
11	Madina Otor	C	20:49	4-11	0-2	3-4		3	3	6	4	3	11	1	2	2	0	-2	FG% 4-4 100%			
00	Ta'Niya Latson	G	27:17	7-12	1-2	0-4		1	0	1	0	2	19	3	2	1	1	15	2 <sup>nd</sup>	FG% 8-16 50.0%		
5	Tessa Johnson	G	25:13	7-7	3-7	2-2		0	7	7	4	0	19	2	0	0	1	8	3PT%	0-2 0.0%		
25	Raven Johnson	G	25:20	2-7	0-3	1-2		2	0	2	1	2	5	2	0	3	0	4	FT%	7-11 63.6%		
1	Maddy McDaniel		23:08	3-4	0-0	3-5		2	1	3	1	3	9	4	1	1	0	3	3 <sup>rd</sup>	FG% 10-18 55.6%		
30	Maryam Dauda		18:12	4-6	0-1	2-2		2	3	5	4	1	10	1	0	0	1	11	3PT%	1-4 25.0%		
44	Agot Makeer		20:16	2-6	0-3	0-4		1	1	2	1	3	4	2	5	0	1	0	FT%	5-6 83.3%		
15	Adhel Tac		11:34	1-2	0-0	0-0		0	2	2	0	0	2	0	0	0	1	-6	4 <sup>th</sup>	FG% 6-15 40.0%		
Team								1		3		4		0		0				3PT%	1-5 20.0%	
Totals				34-68	4-18	19-28	12	29	41	18	18	91	20	13	9	6	3	9		FT%	3-7 42.9%	
Major Fouls: NONE																				GM FG%	34-68	50.0%
																				3PT%	4-18	22.2%

Dead Ball Rebounds: 5, 0

	UNC	USC			Points from	UNC	USC	Period by Period Scoring				
Biggest lead	5 (1 <sup>st</sup> 8:26)	20 (4 <sup>th</sup> 4:27)	Turnovers	20	13			1st	2nd	3rd	4th	TOT
Best Scoring Run	9 (4 <sup>th</sup> 0:59)	8 (1 <sup>st</sup> 0:31)	Paint	34	54			UNC	19	19	22	82
Lead Changes			Second Chance	11	15			USC	26	23	26	91
Times Tied		3	Fast Breaks	12	12							
Time with Lead	03:54	34:06	Bench	24	25							



2024-25 FINAL STATS



2024-25 South Carolina Women's Basketball  
Combined Team Statistics  
All games

Page 1/1  
as of Apr 23, 2025

Game Records

Record	Overall	Home	Away	Neutral
ALL GAMES	35-4	16-1	8-2	11-1
CONFERENCE	15-1	8-0	7-1	0-0
NON-CONFERENCE	20-3	8-1	1-1	11-1

Score by Periods

Team	1st	2nd	3rd	4th	OT	TOT
South Carolina	757	751	794	784	0	3086
Opponents	534	529	589	611	0	2263

Team Box Score

No.	Player				Total		3-Point		F-Throw		Rebounds											
		GP-GS	MIN	AVG	FG-FGA	FG%	3FG-3FGA	3FG%	FT-FTA	FT%	OFF	DEF	TOT	AVG	PF	DQ	A	TO	BLK	STL	PTS	AVG
8	EDWARDS, Joyce	39-1	831:08	21.3	193-365	.529	0-3	.000	108-139	.777	85	110	195	5.0	63	0	48	69	21	42	494	12.7
12	FULWILEY, MiLaysia	39-0	737:29	18.9	173-406	.426	33-128	.258	79-102	.775	25	84	109	2.8	56	0	77	73	30	60	458	11.7
21	KITTS, Chloe	38-38	850:11	22.4	153-294	.520	7-21	.333	75-94	.798	107	186	293	7.7	65	0	73	58	19	28	388	10.2
0	PAOPAO, Te-Hina	39-39	980:15	25.1	140-315	.444	60-162	.370	28-38	.737	14	91	105	2.7	34	0	111	48	13	42	368	9.4
5	JOHNSON, Tessa	37-0	783:00	21.2	108-228	.474	46-107	.430	47-57	.825	16	64	80	2.2	45	0	54	46	13	25	309	8.4
20	FEAGIN, Sania	39-39	772:30	19.8	131-218	.601	2-6	.333	51-64	.797	57	120	177	4.5	81	0	50	67	58	29	315	8.1
2	WATKINS, Ashlyn	14-0	265:04	18.9	43-84	.512	0-2	.000	15-22	.682	32	53	85	6.1	17	0	15	11	26	18	101	7.2
23	HALL, Bree	39-39	918:27	23.6	86-225	.382	44-115	.383	28-42	.667	30	86	116	3.0	48	0	40	25	9	25	244	6.3
25	JOHNSON, Raven	39-39	944:25	24.2	76-217	.350	23-78	.295	15-22	.682	49	125	174	4.5	35	0	108	39	24	54	190	4.9
1	MCDANIEL, Maddy	30-0	328:41	11.0	34-68	.500	3-13	.231	22-32	.688	2	23	25	0.8	18	0	51	17	1	21	93	3.1
30	DAUDA, Maryam	34-0	217:17	6.4	18-56	.321	6-24	.250	27-36	.750	26	39	65	1.9	29	0	4	14	5	8	69	2.0
15	TAC, Adhel	23-0	87:23	3.8	13-31	.419	0-0	.000	10-16	.625	15	22	37	1.6	20	0	1	5	2	2	36	1.6
35	WALKER, Sakima	15-0	84:11	5.6	8-20	.400	0-0	.000	5-7	.714	7	4	11	0.7	11	0	4	3	2	2	21	1.4
Team											73	89	162					9				
Total		39	7800		1176-2527	.465	224-659	.340	510-671	.760	538	1096	1634	41.9	522	0	636	484	223	356	3086	79.1
Opponents		39	7800		857-2405	.356	200-684	.292	349-489	.714	477	860	1337	34.3	650	13	453	643	126	247	2263	58.0

Team Statistics

	SC	OPP
Scoring	3086	2263
Points per game	79.1	58.0
Scoring margin	+21.1	-
Field goals-att	1176-2527	857-2405
Field goal pct	.465	.356
3 point fg-att	224-659	200-684
3-point FG pct	.340	.292
3-pt FG made per game	5.7	5.1
Free throws-att	510-671	349-489
Free throw pct	.760	.714
F-Throws made per game	13.1	8.9
Rebounds	1634	1337
Rebounds per game	41.9	34.3
Rebounding margin	+7.6	-
Assists	636	453
Assists per game	16.3	11.6
Turnovers	484	643
Turnovers per game	12.4	16.5
Turnover margin	+4.1	-
Assist/turnover ratio	1.3	0.7
Steals	356	247
Steals per game	9.1	6.3
Blocks	223	126
Blocks per game	5.7	3.2
Winning streak	0	-
Home win streak	4	-
Attendance	279423	75105
Home games-Avg/Game	17-16437	10-7511
Neutral site-Avg/Game	-	12-11028

Team Results

Date	Opponent		Score	Att.
11/04/2024	vs Michigan	W	68-62	6397
11/10/2024	vs NC State	W	71-57	15424
11/14/2024	Coppin St.	W	92-60	15550
11/17/2024	East Carolina	W	95-44	18000
11/20/2024	at Clemson	W	77-45	5008
11/24/2024	at UCLA	L	62-77	13660
11/28/2024	vs Iowa St.	W	76-36	2122
11/30/2024	vs Purdue	W	99-51	1913
12/05/2024	Duke	W	81-70	15677
12/08/2024	vs TCU	W	85-52	8004
12/15/2024	South Fla.	W	78-62	16501
12/19/2024	Charleston So.	W	82-46	15154
12/29/2024	Wofford	W	93-47	17711
01/02/2025	at Missouri	W	83-52	5154
01/05/2025	at Mississippi St.	W	95-68	6164
01/09/2025	Texas A&M	W	90-49	15479
01/12/2025	Texas	W	67-50	18000
01/16/2025	at Alabama	W	76-58	3669
01/19/2025	Oklahoma	W	101-60	18000
01/24/2025	LSU	W	66-56	18000
01/27/2025	at Tennessee	W	70-63	12033
02/02/2025	Auburn	W	83-66	18000
02/06/2025	at Georgia	W	74-42	6031
02/09/2025	at Texas	L	62-66	10517
02/13/2025	Florida	W	101-63	16708
02/16/2025	UConn	L	58-87	18000
02/20/2025	Arkansas	W	95-55	16638
02/23/2025	at Vanderbilt	W	82-54	7805
02/27/2025	at Ole Miss	W	75-59	5064
03/02/2025	Kentucky	W	78-66	18000
03/07/2025	vs Vanderbilt	W	84-63	9853
03/08/2025	vs Oklahoma	W	93-75	13275
03/09/2025	vs Texas	W	64-45	13532
03/21/2025	Tennessee Tech	W	108-48	11683
03/23/2025	Indiana	W	64-53	12322
03/28/2025	vs Maryland	W	71-67	11055
03/30/2025	vs Duke	W	54-50	11252
04/04/2025	vs Texas	W	74-57	19731
04/06/2025	vs UConn	L	59-82	19777