

SOUTH CAROLINA WOMEN'S BASKETBALL



3 NCAA CHAMPIONSHIPS • 7 NCAA FINAL FOURS • 9 SEC CHAMPIONSHIPS • 9 SEC TOURNAMENT TITLES • 26 ALL-AMERICANS

Assoc. AD Comms/PR: Diana Koval | Office: 803.777.7977 | Cell: 314.369.6050 | Email: dkoval@mailbox.sc.edu
Web: www.GamecocksOnline.com | X: @GamecockWBB | Instagram: @GamecockWBB | TikTok: @GamecockWBB | Facebook: @GamecockWBB

GAME 2 • NOVEMBER 7, 2025 • COLUMBIA, SC • COLONIAL LIFE ARENA (18,000)

#2/2 GAMECOCKS 1-0

Head Coach: Dawn Staley
Record at SC: 476-110 (18th)
Career Record: 648-190 (26th)
Top Scorer: Ta’Niya Latson (20.0)
Top Rebounder: Raven Johnson (8.0)



BOWLING GREEN 1-0

Head Coach: Fred Chmiel
Record at BG: 35-28 (3rd)
Career Record: Same
Top Scorer: Paige Kohler (18.0)
Top Rebounder: Lauren Gerken (10.0)

SCHEDULE/RESULTS

Oct. 24	Anderson (Exh.)	W, 112-31
Oct. 30	vs. #11/11 N. Carolina (Exh.)	W, 91-82
Nov. 3	Grand Canyon (SECN+)	W, 94-54
Nov. 7	Bowling Green (SECN+)	7 p.m.
Nov. 11	Clemson (ESPN2)	6 p.m.

The Real SC (Los Angeles)
Nov. 15 vs. Southern Cal (FOX) 9 p.m.

Nov. 19 Winthrop (SECN) 7 p.m.
Nov. 23 Queens (SECN+) 2 p.m.

Players Era Championship (Las Vegas)
Nov. 26 vs. Duke 4:30 p.m.
Nov. 27 vs. UCLA/Texas 8/10:30 p.m.

ACC/SEC Challenge
Dec. 4 at Louisville (ESPN) 7 p.m.

Dec. 7	NC Central (SECN)	Noon
Dec. 14	Penn State (ESPN)	3:30 p.m.
Dec. 18	at USF (ESPN2)	7 p.m.
Dec. 20	at Florida Gulf Coast	2 p.m.
Dec. 28	Providence (SECN)	Noon
Jan. 1	Alabama* (SECN+)	2 p.m.
Jan. 4	at Florida* (SECN)	2 p.m.
Jan. 8	at Arkansas* (SECN+)	7:30 p.m.
Jan. 11	Georgia* (SECN)	2 p.m.
Jan. 15	Texas* (ESPN2)	7 p.m.
Jan. 18	at Coppin State (ESPN+)	Noon
Jan. 22	at Oklahoma* (ESPN)	7 p.m.
Jan. 25	Vanderbilt* (ESPN)	3 p.m.
Jan. 29	at Auburn* (SECN)	9 p.m.
Feb. 2	at Texas A&M* (ESPN2/U)	8 p.m.
Feb. 5	Mississippi State* (SECN)	6:30 p.m.
Feb. 8	Tennessee* (ABC)	3 p.m.
Feb. 14	at LSU* (ABC)	8:30 p.m.
Feb. 19	at Alabama* (SECN)	8:30 p.m.
Feb. 22	Ole Miss* (ESPN/2)	Noon
Feb. 26	Missouri* (SECN)	8 p.m.
Mar. 1	at Kentucky* (SECN+)	2 p.m.

Mar. 4-8 SEC Tournament (Greenville, SC)

* indicates SEC game
All times Eastern
TV outlet listed in parentheses (WSN in Women's Sports Network;
SECN is SEC Network; SECN+ is SEC Network online via the ESPN app.

THE SERIES

SC Record/Staley Era: 2-0 / 1-0
H: 1-0 A: 1-0 N: 0-0
Current Streak: W2
Last Meeting: W 93-62, 12/19/23 at Bowling Green

HOW TO FOLLOW

Watch: SECN+ (Dave Weinstein, John Williams)
Listen: 107.5 FM The Game; Sirius XM 162 or 191 and on the SiriusXM app (Brad Muller)
Live Stats: StatBroadcast

GAMECOCK NOTABLES

- Friday night's game is the second-straight welcome home for a former Gamecock assistant coach. Fred Chmiel was on the South Carolina sideline for eight seasons (2015-16 through 2022-23), helping the Gamecocks to a pair of National Championships, two additional trips to the NCAA Final Four, five SEC regular-season titles and six SEC Tournament championships.
- South Carolina's trio of starting guards combined for 50 of the team's 94 points in Monday's season opener, but scoring wasn't all they did. The trio combined for 14 of the team's 19 assists in the game against just four turnovers. All three rank among the SEC's top 15 in assist-to-turnover ratio as well, led by **Raven Johnson's** 7.0 mark, which is fourth in the nation and tops in the SEC.
- Guards may have led the way in scoring, but the Gamecocks still build their success in the paint. South Carolina, out-scored Grand Canyon 40-18 in the high-percentage area.
- Senior **Raven Johnson** wasted little time showing off all aspects of her game in Monday's season opener. She poured in 11 points, including matching her career high with three 3-pointers, while leading the team in assists (7), rebounds (8) and steals (3).
- Senior guard **Ta’Niya Latson's** team-high 20 points in Monday's season opener – which rank her 10th in the SEC in scoring average – came on an efficient 7-of-10 shooting, and her four assists were second on the team. Her .700 field goal percentage is eighth in the SEC.
- Sophomore **Adhel Tac** tied her career high in rebounds with six Monday against Grand Canyon, coming in just 15 minutes on the court.
- South Carolina's freshmen got their first look at college basketball Monday night, and neither were shy about making their presence felt. **Agot Makeer's** three blocks have her ranked third in the SEC in blocks per game, and **Ayla McDowell** was efficient offensively with her nine points coming on 3-of-5 shooting from the field and 3-of-4 accuracy from the free throw line.

3

This game marks Staley's third all-time against a former assistant coach. She is 2-0 in the previous two meetings.

7

Seven of the 10 Gamecocks who took the floor in the season opener shot at least 50.0 percent from the field.

63

Ta’Niya Latson's 20-point showing in the season opener was the 63rd such outing in the 94 games of her career.

TALE OF THE TAPE

SOUTH CAROLINA	94.0	.596	.474	9.0	.680	17.0	54.0	+40.0	.274	.206	+7.0	19.0	+6.0	6.0	6.0
	Points	FG%	3FG%	3FGM per Game	FT%	FTM per Game	Scoring Def.	Scoring Margin	FG% Def.	3FG% Def.	Reb. Margin	Assist Avg.	TO Margin	Blocks Avg.	Steals Avg.
BOWLING GREEN	82.0	.519	.313	5.0	.793	23.0	67.0	+15.0	.418	.267	+2.0	11.0	-2.0	3.0	7.0

TA'NIYA LATSON

5-8 • Sr. • G • Miami, FL

tuh-NYE-uh LAT-son

00



Last Gm: 20 pts, 7-10 FGs, 4 assists vs. GCU
Efficient scorer and distributor, looking to further expand her game ... SEC top-10 in ppg, FG% ... 3x All-America, 3x All-ACC 1st Team.

2025-26	Career*	Career Highs
PPG 20.0	22.5	Pt: 40 at Va. Tech, 1/2/25*
APG 4.0	3.9	Rb: 11 vs. TTU, 11/29/24**
FG% .700	.449	Ast: 12 at Va., 2/6/25*
3FG% .500	.327	Stl: 8 vs. Presby, 12/15/22*
FT% .625	.839	3FG: 5 vs. Miami, 1/19/25*

MADDY McDANIEL

5-9 • So. • G • Upper Marlboro, Md.

1



Last Gm: 3 pts, 2 assts, 8 mins vs. GCU
Court vision, can get to the rim, makes good decisions ... played in 30 games last year, 3.0 A.T.O. ... McDonald's All-American ... #14 in 2024 Class.

2025-26	Career	Career Highs
PPG 3.0	3.1	Pt: 10 vs. Purdue, 11/30/24
RPG 0.0	0.8	Rb: 4 vs. USF, 12/15/24*
APG 2.0	1.7	Ast: 6 vs. ECU, 11/17/24
FG% .500	.500	Stl: 4 vs. ECU, 11/17/24
FT% .688	.688	3FG: 1 vs. GCU, 11/3/25*

TESSA JOHNSON

6-0 • Jr. • G • Albertville, MN

5



Last Gm: 19 pts, 3-6 3FG, 5 rebs, 5 assts vs. GCU
Multi-level scoring threat ... SEC top-5 in 3s/gm, A.T.O., top 15 ppg, FG% and 3FG% ... 2024 NCAA Final Four All-Tournament Team.

2025-26	Career	Career Highs
PPG 19.0	7.7	Pt: 22 at Miss. St., 1/5/25
APG 3.0	1.3	Rb: 7 vs. Md., 11/12/23
FG% .615	.467	A: 6 vs. TN Tech, 3/21/25*
3FG% .500	.433	Stl: 3 vs. Ala., 2/22/24*
FT% —	.843	3FG: 4 at Miss. St., 1/5/25*

JOYCE EDWARDS

6-3 • So. • F • Camden, SC

8



Last Gm: 13 pts, 5 rebs vs. GCU
Size, speed, skill and feel for the game ... top returning scorer and rebounder ... 2025 All-Amer, 1st-Team All-SEC ... 2025 FIBA AmeriCup gold.

2025-26	Career	Career Highs
PPG 13.0	12.7	Pt: 28 vs. Fla., 2/13/25
RPG 5.0	5.0	Rb: 12 at Vandy, 2/23/25
BPG 1.0	0.6	Blk: 2 at Vandy, 2/23/25*
FG% .455	.527	Ast: 6 vs. Texas, 4/4/25
FT% .750	.776	Stl: 4 vs. NC St., 11/10/24

MADINA OKOT

6-6 • Sr. • C • Mumias, Kenya

mah-DEE-nuh oh-COAT

11



Last Gm: 12 pts, 4 rebs, 17 mins vs. GCU
Size and strength inside, expanding shooting range ... led SEC in FG% and fourth in rebounding last season at Mississippi State.

2025-26	Career*	Career Highs
PPG 12.0	11.3	Pt: 26 at UMES, 12/20/24*
RPG 4.0	9.4	Rb: 23 at Vandy, 2/13/25*
BPG 0.0	1.1	Blk: 4 at Mizzou, 1/27/25*
FG% .800	.652	Ast: 3 at Fla., 2/26/25**
FT% .667	.628	Stl: 5 vs. Ala. St., 11/13/24*

ADHEL TAC

6-5 • So. • F • Grand Prairie, TX

uh-DELL TACK

15



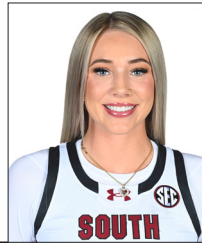
Last Gm: 2 pts, 6 rebs, 15 mins vs. GCU
Interior presence, high motor ... growing strength and confidence after long injury recovery at end of high school career ... played in 23 games last season.

2025-26	Career	Career Highs
PPG 2.0	1.6	Pt: 9 at Mizzou, 1/2/25
RPG 6.0	1.8	Rb: 6 vs. GCU, 11/3/25*
BPG 1.0	0.1	Blk: 1 vs. GCU, 11/3/25*
FG% .500	.424	Ast: 1 vs. Ark., 2/20/25
FT% .000	.588	Stl: 1 vs. Texas, 4/4/25*

CHLOE KITTS

6-2 • Sr. • F • Oviedo, FL

21



Last Gm: Out for season, October ACL surgery
Tenacious; improved physical, mental strength ... in 2025 SEC Tourn and NCAA Regional MVP, All-American, team's top rebounder.

2024-25	Career	Career Highs
PPG 10.2	8.1	Pt: 25 vs. Vandy, 3/7/25
RPG 7.7	5.8	Rb: 14 vs. Mich., 11/4/24*
APG 1.9	1.5	Blk: 5 vs. Mizzou, 2/8/24
FG% .520	.523	Ast: 10 at Miss., 2/27/25
FT% .798	.734	Stl: 4 at Miss., 2/27/25

AYLA McDOWELL

6-1 • Fr. • G • Cypress, TX

EYE-luh

24



Last Gm: 9 pts, 3-5 FGs, 18 mins vs. GCU
Three-level scorer, great size and athleticism ... over 2,700 points in high school ... McDonald's All-American, #15 in 2025 Class ... Brazil National Team.

2025-26	Career	Career Highs
PPG 9.0	9.0	Pt: 9 vs. GCU, 11/3/25
APG 0.0	0.0	Rb: 2 vs. GCU, 11/3/25
FG% .600	.600	Ast: —
3FG% .000	.000	Stl: 1 vs. GCU, 11/3/25
FT% .750	.750	3FG: —

RAVEN JOHNSON

5-9 • Sr. • G • Atlanta, GA

25



Last Gm: 11 pts, 8 rebs, 7 assts, 3 stls vs. GCU
Great instincts, good decisions ... 4th in NCAA in A.T.O. (7.0) ... SEC top-5 in apg, made 3s/gm ... 2024 All-SEC, 2025 SEC All-Defensive Team.

2025-26	Career	Career Highs
PPG 11.0	5.7	Pt: 18 v. SDSU, 11/20/23
RPG 8.0	4.1	Rb: 15 at Tenn., 2/15/24
APG 7.0	3.6	A: 17 v. Clems., 11/16/23
FG% .667	.395	Stl: 6 vs. Auburn, 2/2/25
FT% —	.639	Blk: 2 v. Texas, 1/12/25*

MARYAM DAUDA

6-4 • Sr. • F • Bentonville, Ark.

MARE-ee-um DOW-duh

30



Last Gm: 2 rebs, 10 mins vs. GCU
Keeps defenders off balance, great footwork inside ... 102 career games, including 34 last season ... career-high 10.1 ppg, 6.3 rpg in soph. year (Ark.).

2025-26	Career*	Career Highs
PPG 0.0	5.1	Pt: 22 at Tulsa, 3/21/24*
RPG 19.2	3.6	Rb: 13 v. Miss St., 1/11/24*
FG% —	.429	Blk: 10 at Ala., 1/14/24*
3FG% —	.295	Ast: 5 at Ala., 1/14/24
FT% —	.752	Stl: 4 v. UGa, 1/7/24*

AGOT MAKEER

6-0 • Fr. • G • Thunder Bay, Ontario

uh-GOT muh-KEER

44



Last Gm: 5 pts, 2 rebs, 2 assts, 3 stls vs. GCU
Size, speed, versatility ... 3rd in SEC in bpg (3.0) ... McDonald's All-American, No 6 in 2025 Class ... has played for Team Canada in U17 and U19 events.

2025-26	Career	Career Highs
PPG 5.0	5.0	Pt: 5 vs. GCU, 11/3/25
APG 2.0	2.0	Rb: 2 vs. GCU, 11/3/25
FG% .333	.333	Ast: 2 vs. GCU, 11/3/25
3FG% .500	.500	Stl: —
FT% 1.00	1.00	Blk: 3 vs. GCU, 11/3/25

DAWN STALEY

At SC: 476-110 (18th season)

Career: 648-190 (26th season)

HC



- 3 National Championships, including 10th undefeated title season in NCAA history (2024)
- 7 Final Fours in last 10 NCAA Tournaments
- 9 SEC Regular-Season Championships
- 9 SEC Tournament Championships
- 9th in winning percentage (.773) among active NCAA Div. I coaches, 10th all-time
- 12 WNBA Draft picks since 2020 – more than any other program in that time

* indicates includes games at previous NCAA Div. I institution

* indicates has happened multiple times, most recent listed

QUICK FACTS

The University

Location: Columbia, S.C.

Founded: 1801

Enrollment: 40,000

Colors: Garnet (PMS 202C) and Black

Nickname: Gamecocks

Conference: Southeastern

University President: Michael Amiridis

Athletics Director: Jeremiah Donati

Facility: Colonial Life Arena (18,000)

Coaching Staff

Head Coach: Dawn Staley

Alma Mater: Virginia, 1992

Overall Record: 648-190 (26th season)

School Record: 476-110 (18th season)

Assoc. Head Coach, Alma Mater:

Lisa Boyer, Ithaca, 1979 (18th season)

Assistant Coaches, Alma Mater:

Jollette Law, Iowa, 1990 (9th season)

Wendale Farrow, E. Michigan, 2009 (1st season)

Mary Wooley, USC Aiken, 2002 (3rd season)

Khadijah Sessions, South Carolina, 2016 (3rd season)

Team Information

2024-25 Record: 35-4

Home: 16-1 Away: 8-2 Neutral: 11-1

SEC Record (Finish): 15-1 (T-1st)

Home: 8-0 Away: 7-1

Letterwinners Returning/Lost: 2/3

Starters Returning/Lost: 7/6

Program History

First Year of Women's Basketball: 1974-75

All-Time Record: 1,056-539 (52nd season)

All-Time SEC Record: 278-213 (35th season)

NCAA Appearances (Last): 21 (2025)

NCAA Tournament Record: 55-18

2025 NCAA Result: Runner-Up

WNIT Appearances (Last): 5 (2011)

WNIT Record: 6-4

Media Relations

Women's Basketball Contact: Diana Koval

Office: 803.777.7977

Cell: 314.369.6050

Email: dkoval@mailbox.sc.edu

Women's Basketball on Social Media:

Twitter: @GamecockWBB

Instagram: @GamecockWBB

Facebook: @GamecockWBB

TikTok: @GamecockWBB

Head Coach on Social Media

Twitter: @DawnStaley

Instagram: @Staley05

Athletics Department on the Web

Website: GamecocksOnline.com

Twitter: @GamecocksOnline

Instagram: @GamecocksOnline

Facebook: Facebook.com/GamecocksOnline

YouTube: YouTube.com/GamecocksOnline

CURRENT STREAKS

	Total	Home	Road	Neut.
Overall	W1	W5	W2	L1
SEC	W5	W47	W2	—
Non-Conference	W1	W3	L1	L1
Ranked Teams	L1	W1	L1	L1

The Staley Effect

Under Dawn Staley, South Carolina women's basketball has been a perennial national power since winning its first SEC title in 2013-14. A few of the highlights from that.

- 5 straight NCAA Final Four appearances (2021-2025) is the longest active streak and the second-longest streak in tournament history.
- 3 National Championships are third most by a single program in tournament history.
- 10th undefeated National Championship season in NCAA history (2023-24)
- 84 AP No. 1 rankings are third-most by a program in the poll's history.
- 118 straight AP Top-10 rankings is the longest active streak – more than three times the next program (Texas, 30)
- 11 Gamecocks have earned All-America status at least once in their careers

The Bowling Green Series

The Gamecocks and Falcons have met twice before in women's basketball with South Carolina winning both matchups. The most recent meeting was a reconnection of the two programs with then-first-year head coach Fred Chmiel welcoming is former Gamecock team and reigning National Champs to Bowling Green on Dec. 19, 2023.

South Carolina prevailed in that meeting 93-62 behind stellar 58.7 percent shooting, including 56.3 percent from 3-point range. Just two Gamecocks eligible to play tonight remain from that team – Raven Johnson (5 pts, 4 assts) and Tessa Johnson (4 pts, 1 reb).

Home Sweet Home

The Gamecocks are 547-168 (.765) in home games (some records prior to 1976-77 did not include location of games). Current head coach Dawn Staley is 235-35 at home for a program-best .870 winning percentage.

Playing in its 24th season at Colonial Life Arena, South Carolina boasts a 298-68 (.814) record in the building, including four undefeated seasons since 2013-14. Staley's share of that record is 232-35 (.869).

South Carolina's longest home winning streak is 71 (Dec. 17, 2020 - Feb. 13, 2025), which is an SEC record and ranks fourth in NCAA history.

2025-26 AWARDS

Maryam Dauda

Cheryl Miller Preseason Top 20 Watch List

Joyce Edwards

Preseason USA Today Second-Team All-America
USBWA Ann Meyers Drysdale Award Watch List
Naismith Trophy Watch List (preseason)
Wade Trophy Watch List (preseason)
Preseason All-SEC First Team (media, coaches)
Katrina McClain Preseason Top 20 Watch List

Raven Johnson

USBWA Ann Meyers Drysdale Award Watch List
Naismith Trophy Watch List (preseason)
Nancy Lieberman Preseason Top 20 Watch List

Ta'Niya Latson

Preseason AP All-America
Preseason USA Today First-Team All-America
USBWA Ann Meyers Drysdale Award Watch List
Naismith Trophy Watch List (preseason)
Wade Trophy Watch List (preseason)
Preseason All-SEC First Team (coaches)
Preseason All-SEC Second Team (media)
Ann Meyers Drysdale Preseason Top 20 Watch List

Madina Okot

Lisa Leslie Preseason Top 20 Watch List

Agot Makeer

Tarnika Catchings Watch List

Ranking Review

South Carolina opens the season ranked No. 2 in both the AP Poll and the USA Today/WBCA Coaches' Poll.

It marks the Gamecocks' 118th consecutive entry in the AP top 10, beginning with the 2019-20 preseason poll. It is the longest active streak and the eighth longest in the history of that poll (7th is 137, Baylor). Their 249 straight appearances in the AP Poll, dating back to Dec. 10, 2012, marks the second-longest active streak in the nation and is the seventh longest all-time (6th, Maryland, 251).

In the USA Today/WBCA Coaches' Poll, South Carolina has been in the top 10 since claiming the No. 10 spot in the 2019-20 preseason poll.

GAMECOCKS IN THE RANKINGS (thru games of 11/5)

Team	SEC	NCAA	Actual	Raven Johnson	SEC	NCAA	Actual
Scoring Offense	4	49	94.0	Assists per game	3	28	7.0
Scoring Defense	5	131	54.0	Steals per game	12	144	3.0
Scoring Margin	4	70	+40.0	3-Point FG percentage	8	174	.600
Field Goal Percentage	2	9	.596	3-Point FGs made per game	3	88	3.0
Field Goal %age Def.	1	51	.274	Assist-to-turnover ratio	1	4	7.0
3-Point FG %age	2	20	.474				
3-Point FG %age Def.	3	96	.206	Tessa Johnson	SEC	NCAA	Actual
3-Point FG Made/Gm.	2	65	9.0	Points per game	13	133	19.0
Free Throw Percentage	11	174	.680	Field goal percentage	14	247	.615
Free Throws Made/Gm.	7	75	17.0	3-Point FG percentage	12	219	.500
Rebounding Average	14	187	38.0	3-Point FGs made per game	3	88	3.0
Rebounding Margin	13	146	+7.0	Assist-to-turnover ratio	5	101	3.0
Offensive Rebound Avg.	16	309	5.0				
Assists Per Game	5	60	19.0	Ta'Niya Latson	SEC	NCAA	Actual
Steals Per Game	13	239	6.0	Points per game	10	103	20.0
Turnover Margin	9	110	+6.0	Field goal percentage	8	134	.700
Turnovers Per Game	2	46	11.0	Assists per game	14	204	4.0
Assist-to-Turnover Ratio	1	50	1.7	Assist-to-turnover ratio	14	242	2.0
Blocked Shots Per Game	6	40	6.0				
Bench Points Per Game	8	202	19.0	Agot Makeer	SEC	NCAA	Actual
Home Attendance Avg.	1	1	15,601	Blocks per game	3	30	3.0

Schedule Sketch

South Carolina's schedule continues to challenge and prepare the team for the postseason. This year's slate features 11 games against teams ranked in the preseason top 25 – four at home, four on the road and three at neutral sites. Six of the 11 games are against teams in the preseason top 10.

The non-conference schedule is highlighted by four ranked matchups – vs. #18/16 Southern Cal (Nov. 15), vs. #7/6 Duke (Nov. 26) vs. #3/4 UCLA or #4/3 Texas (Nov. 27) and at #20/19 Louisville (Dec. 4).

The Staley File

In her 26th season as a head coach, Dawn Staley has a .773 (648-190) winning percentage, which ranks ninth in the nation among active head coaches and 10th all-time. With three national championships, she ranks fourth among head coaches all-time in NCAA titles.

Staley is one of just two women's basketball coaches to lead their teams to multiple 40-game win streaks in NCAA history with the Gamecocks' recent program-record 43-game streak ranking seventh longest in NCAA history. She is the first Black head coach to win multiple national championships in men's or women's basketball and one of just 11 men's or women's coaches to win at least three. She is one of seven coaches to lead a team to at least four NCAA National Championship games.

Now in her 18th season with the Gamecocks, Staley is the program's all-time winningest coach (476) with a program-record 14 postseason appearances. She accounts for all seven of the Gamecocks' Final Four appearances and the only NCAA National Championships in program history.

Staley's nine SEC regular-season championships trail only Pat Summitt's 16 in league history, and her seven SEC Coach of the Year awards trail Summitt's league record by just one. Staley's 214 SEC regular-season wins are the most among active league coaches and third all-time – behind just Summitt (Tennessee, 306) and Andy Landers (Georgia, 273). She was the second-fastest to the 200-win mark in league history with her 255 games

trailing Summitt's mark of 229. Staley's .793 SEC winning percentage (214-56) is second only to Summitt (.874) among coaches in the league at least five seasons. She owns the SEC record for consecutive regular-season conference victories with a 57-game streak that began in the 2021-22 season and ended in 2024-25.

First Watch

Gamecocks have dominated the many national award watch lists that are announced each preseason.

South Carolina is one of three schools with a player on each of the Naismith Hall of Fame Women's Starting Five watch lists.

Three Gamecocks – Joyce Edwards, Raven Johnson, Ta'Niya Latson – are on the watch lists for the Naismith Women's Player of the Year and the USBWA's Ann Meyers Drysdale Player of the Year award. South Carolina is one of two schools with three players on both lists.

Edwards and Latson are also among the 20 players on the Wade Trophy Watch List, which is the WBCA's national player of the year award.

Latson drew preseason All-America honors from both the Associated Press and USA Today. Edward earned a spot on the USA Today Preseason All-America Second Team.

The pair was also ranked on ESPN's list of the top 25 players in the NCAA this season. Latson came in at #7 with Edwards close behind at #11, making South Carolina one of two programs with multiple players in the first 11 places.

Agot Makeer is on the list for the Tamika Catchings Award, the USBWA's National Freshman of the Year.

Back in (Garnet and) Black

South Carolina's 11-player roster includes seven returning letterwinners from last season's SEC championship and NCAA runner-up squad. The group lost leading rebounder Chloe Kitts to a season-ending injury prior to the start of the season, it still includes honorable mention All-American Joyce Edwards, who led the team in scoring.

Veteran guards Raven Johnson – a program top-10 entry in career assists – and Tessa Johnson, whose offense powered the Gamecocks' 2024 National Championship, are back to guide their less experienced teammates.

Newcomer News

Dawn Staley added four newcomers to her roster – two elite senior transfers and a pair of top-15 freshmen.

Transfers Ta'Niya Latson (Florida State) – the nation's top scorer last season (25.2 ppg) – and Madina Okot (Mississippi State) – the SEC's top percentage shooter last season (.649) – earned starting spots in both exhibition games. Latson averaged 16.5 points and 3.0 assists, while Okot averaged a double-double (14.0 ppg, 10.5 rpg).

Freshman guards Agot Makeer (#6 in the Class of 2025) and Ayla McDowell (#15 in the Class of 2025) are both McDonald's All-Americans who represented their home countries in international competition this summer.

After leading Montverde Academy to a runner-up finish at the Chipotle High School National Championships, Makeer, suited up for Canada at the FIBA U19 World Cup, helping it to a fourth-place finish with 10.3 points,

NATIONAL RANKINGS

Associated Press Poll (Preseason)

1. UConn	0-0
2. South Carolina	0-0
3. UCLA	0-0
4. Texas	0-0
5. LSU	0-0
6. Oklahoma	0-0
7. Duke	0-0
8. Tennessee	0-0
9. NC State	0-0
10. Maryland	0-0
11. North Carolina	0-0
12. Ole Miss	0-0
13. Michigan	0-0
14. Iowa State	0-0
15. Notre Dame	0-0
16. Baylor	0-0
17. TCU	0-0
18. Southern Cal	0-0
19. Vanderbilt	0-0
20. Louisville	0-0
21. Iowa	0-0
22. Oklahoma State	0-0
23. Michigan State	0-0
24. Richmond	0-0
Kentucky	0-0

USA Today/WBCA Coaches' Poll (Preseason)

1. UConn	0-0
2. South Carolina	0-0
3. Texas	0-0
4. UCLA	0-0
5. LSU	0-0
6. Duke	0-0
7. Oklahoma	0-0
8. NC State	0-0
9. Tennessee	0-0
10. Maryland	0-0
11. North Carolina	0-0
12. TCU	0-0
13. Notre Dame	0-0
14. Ole Miss	0-0
15. Michigan	0-0
16. Southern Cal	0-0
17. Iowa State	0-0
18. Baylor	0-0
19. Louisville	0-0
20. Kentucky	0-0
21. Vanderbilt	0-0
22. Oklahoma State	0-0
23. Iowa	0-0
24. Ohio State	0-0
25. Kansas State	0-0

including 46.2 percent 3-point shooting, and 4.9 rebounds per game.

McDowell amassed over 2,700 career points in high school before wearing her Brazil jersey at both the FIBA AmeriCup and the FIBA U19 World Cup over the summer. For the U19 team, she was the top scorer with a 16.8 scoring average while averaging 4.5 rebounds and 2.7 steals.

THE STALEY ERA

Wins

30-Win Seasons	8
25-Win Seasons.....	13
20-Win Seasons.....	14
Winning Seasons.....	15

National Rankings

Weeks in the AP Top 25	254
Weeks in the AP Top 10	209
Weeks in the AP Top 3	134
Weeks at AP No. 1	84

Postseason

NCAA Tournament Appearances.....	13
NCAA Sweet 16s	12
NCAA Final Fours	7
National Championships	3

In the SEC

Regular-Season Championships	9
Regular-Season Top 3 Finishes	13
Tournament Championships	9

GAMECOCKS IN 2024-25 NATIONAL POLLS

Poll	Pre	11/10	11/17	11/24	12/1	12/8	12/15	12/22	12/29	1/5	1/12	1/19	1/26	2/2	2/9	2/16	2/23	3/2	3/9	3/16
Associated Press	2																			
Coaches	2																			

That's So Raven

Senior point guard Raven Johnson has been at the tip of the spear on both sides of the ball and has led the Gamecocks to nothing but win.

Now in her fourth full season, South Carolina is 108-5 with her in the lineup (missed one game each in the 2022-23 and 2023-24 seasons). That stretch features three trips to the Final Four, including a National Championship (2024) and runner-up finish (2025), three SEC Regular-Season titles and three SEC Tournament championships in the three full seasons of her career.

Johnson is 10th in program history in career assists (417) and fifth in the category for SEC play (166). She owns three of the top seven single-season assist-to-turnover ratios in program history, including a program-record 3.33 mark in SEC play in 2024-25. Her current career 2.76 ATO (417:151) is well ahead of the current program record of 2.55 by WNBA veteran Tyasha Harris (2017-20).

The powerful guard makes her presence felt on the glass as well, averaging 4.1 rebounds for her career, and she has been the team's top rebounder in 11 games, including this season's opener against Grand Canyon (Nov. 3).

Let Us Re-Joyce

Sophomore forward Joyce Edwards announced her presence on the college stage last season as the Gamecocks' top scorer (12.7 ppg) with a team-high 16 games leading the team in points and five 20-point outings.

The production made her just the third freshman in program history to earn First-Team All-SEC honors, and

she was an All-America honorable mention selection. Her 11.5 points and 8.0 rebounds per game in the Final Four yielded a spot on the All-Tournament Team.

This season, Edwards is on every national player of the year watch list and the Katrina McClain Power Forward of the Year list as well. It comes after a summer of representing the United States in both 3x3 and 5-on-5 competitions. After claiming a title at the FIBA 3x3 Nations League Americas Conference 2 event, she went on to average 9.9 points at the FIBA AmeriCup to rank among the top 15 scorers in the tournament and help the Americans to a gold medal.

It's T-Time

Junior guard Tessa Johnson is poised to shake off her "Tournament Tessa" moniker to bring "Trusted Tessa" out every time she steps on the court and has shown her coaches enough to earn a starting position early this season.

Johnson turned in career-high numbers last season with 8.4 points and 1.5 assists per game. That production was muted by inconsistent outings throughout the year that belied her capabilities, which she showed off in the most crucial moments of the team's undefeated run to the 2024 National Championship in her freshman season when she averaged 14.0 points on 58.8 percent shooting in the final weekend of the season, including a team-best 19 points in the title game, to earn a spot on the NCAA Final Four All-Tournament Team..

In her first career start, Johnson stuffed the stat sheet with 19 points, five rebounds and three assists. The effort came on the heels of a 19-point (7-of-11 FGs), seven-rebound exhibition outing against #11/11 North Carolina (Oct. 30).

Everybody's All-American

The Gamecocks' 11-woman roster includes eight McDonald's All-Americans – Maryam Dauda, Joyce Edwards, Raven Johnson, Tessa Johnson, Ta'Niya Latson, Agot Makeer, Maddy McDaniel and Ayla McDowell, .

At South Carolina, Staley has coached 29 McDonald's All-Americans, including 22 who signed as freshmen.

Up Next

Just as the 2025-26 season began, fans can make plans for the Gamecocks' 2026-27 season with three games already announced on the team's schedule – all are a return to events that have featured South Carolina before..

The Gamecocks will return to Paris for Oui Play 2026, facing Maryland in the season opener on Nov. 2. The Gamecocks are also slated to take on UConn in the 2026 Basketball Hall of Fame Women's Showcase on Nov. 24. Most recently, the Charlotte Sports Foundation announced South Carolina's three-year commitment to the Ally Tipoff with games against North Carolina (2026), UConn (2027) and NC State (2028).

WNBA Pipeline

Dawn Staley's status as a dream merchant is most evident by the steady stream of Gamecocks being drafted into and enjoying lengthy careers in the WNBA. Since her first Gamecock was drafted in 2015, she has seen 18 have their name called on draft night – the second-most by a program in that time.

Staley's numbers have skyrocketed since 2020 with an NCAA-best 12 draft picks since then, including a best-in-the-nation six first-round selections in that time.

GAMES LED TEAM IN...

Scoring	2025-26	Career	Record
Ta'Niya Latson	1	69*	50-19
Joyce Edwards	0	16	14-2
Chloe Kitts	0	10	10-0
Madina Okot	0	8*	7-1*
Tessa Johnson	0	5	5-0
Maryam Dauda	0	5*	1-4

Rebounding	2025-26	Career	Record
Raven Johnson	1	11	10-1
Chloe Kitts	0	28	26-2
Madina Okot	0	24*	15-9*
Joyce Edwards	0	6	5-1
Ta'Niya Latson	0	6*	5-1*
Maryam Dauda	0	5*	2-3

Assists	2025-26	Career	Record
Raven Johnson	1	54	53-1
Ta'Niya Latson	0	49*	32-17*
Chloe Kitts	0	8	8-0
Tessa Johnson	0	5	5-0
Maddy McDaniel	0	5	4-1
Joyce Edwards	0	1	1-0

* indicates includes games at previous NCAA Div. I program

MISCELLANEOUS STATS

Triple-Double	2025-26	Career	Record
Chloe Kitts	0	1	1-0
Ta'Niya Latson	0	1*	1-0*

Double-Doubles	2025-26	Career	Record
Chloe Kitts	0	17	17-0
Madina Okot	0	12*	10-2*
Ta'Niya Latson	0	5*	5-0*
Joyce Edwards	0	4	4-0
Maryam Dauda	0	2*	1-1
Raven Johnson	0	1	1-0

40+ Points	2025-26	Career	Record
Ta'Niya Latson	0	1*	1-0*

30+ Points	2025-26	Career	Record
Ta'Niya Latson	0	20*	17-3*

20+ Points	2025-26	Career	Record
Ta'Niya Latson	1	63*	48-15*
Joyce Edwards	0	5	5-0
Chloe Kitts	0	4	4-0
Madina Okot	0	2*	2-0*
Maryam Dauda	0	1*	0-1
Tessa Johnson	0	1	1-0

10+ Points	2025-26	Career	Record
Ta'Niya Latson	1	87*	61-26*
Joyce Edwards	1	28	26-2
Tessa Johnson	1	26	25-1
Raven Johnson	1	23	22-1
Madina Okot	1	23*	19-4*
Chloe Kitts	0	43	43-0
Maryam Dauda	0	22*	12-10
Maddy McDaniel	0	1	1-0

20+ Rebounds	2025-26	Career	Record
Madina Okot	0	1*	1-0*

10+ Rebounds	2025-26	Career	Record
Chloe Kitts	0	21	21-0
Madina Okot	0	17*	12-5*
Maryam Dauda	0	5*	4-1
Joyce Edwards	0	4	4-0
Raven Johnson	0	3	3-0
Ta'Niya Latson	0	3*	3-0*

10+ Assists	2025-26	Career	Record
Raven Johnson	0	1	1-0
Chloe Kitts	0	1	1-0
Ta'Niya Latson	0	4*	4-0*

5+ Assists	2025-26	Career	Record
Raven Johnson	1	38	38-0
Ta'Niya Latson	0	35*	27-8*
Tessa Johnson	0	5	5-0
Chloe Kitts	0	5	5-0
Maddy McDaniel	0	2	2-0
Joyce Edwards	0	1	1-0

5+ Blocks	2025-26	Career	Record
Maryam Dauda	0	1*	1-0

5+ Steals	2025-26	Career	Record
Raven Johnson	0	6	6-0

* indicates includes games at previous NCAA Div. I program

In proof Staley sends players to the league ready, six Gamecocks have earned All-Rookie Team honors, including three WNBA Rookies of the Year – Allisha Gray (2017), A’ja Wilson (2018), Aliyah Boston (2023).

Great Gamecock Fans

South Carolina fans have led the nation in average attendance for the last 11 seasons, although the NCAA does not officially recognize the COVID-limited attendance in the 2020-21 season. The Gamecocks are on track to continue that streak after selling out of season tickets for the second time in as many seasons and opened the 2025-26 slate on Nov. 3 against Grand Canyon with the highest-attended game of the season at 15,601.

The Gamecocks have had at least one sellout of their 18,000-seat Colonial Life Arena for eight straight seasons (excluding COVID-limited 2020-21 season) dating back to the first ever sellout of 18,000 on Feb. 8, 2016. There have been at least five sellouts in each of the last two seasons.

South Carolina’s attendance average of 16,437 in 2024-25 is the second-highest in the history of the NCAA, narrowly trailing Tennessee’s 1998-99 average of 16,565. That mark included a program-record seven sellouts.

TEAM SPECIALTY STATS

		Pts. in Paint	Pts. Off TOs	2nd Chance Pts	Fast Break Pts
11/3	GCU	40-18	22-10	14-15	32-2
11/7	BGSU				
11/11	Clem.				
11/15	vs SoCal				
11/19	Winthrop				
11/23	Queens				
11/26	vs. Duke				
11/27	vs. TBD				
12/4	at UL				
12/7	NCCU				
12/14	PSU				
12/18	at USF				
12/20	at FGCU				
12/28	Prov.				
1/1	Ala.				
1/4	at FL				
1/8	at Ark.				
1/11	GA				
1/15	TX				
1/18	at CSU				
1/22	at OK				
1/25	Vandy				
1/29	at Aub.				
2/2	at TAM				
2/5	M State				
2/8	TN				
2/14	at LSU				
2/19	at AL				
2/22	OM				
2/26	MO				
3/1	at KY				
Season Avg.		40.0-18.0	22.0-10.0	14.0-15.0	32.0-2.0

STARTERS VS. BENCH

		SC Starters	Opp. Starters	SC Bench	Opp. Bench
11/3	GCU	75	34	19	20
11/7	BGSU				
11/11	Clem.				
11/15	vs SoCal				
11/19	Winthrop				
11/23	Queens				
11/26	vs. Duke				
11/27	vs. TBD				
12/4	at UL				
12/7	NCCU				
12/14	PSU				
12/18	at USF				
12/20	at FGCU				
12/28	Prov.				
1/1	Ala.				
1/4	at FL				
1/8	at Ark.				
1/11	GA				
1/15	TX				
1/18	at CSU				
1/22	at OK				
1/25	Vandy				
1/29	at Aub.				
2/2	at TAM				
2/5	M State				
2/8	TN				
2/14	at LSU				
2/19	at AL				
2/22	OM				
2/26	MO				
3/1	at KY				
Season Avg.		75.0	34.0	19.0	20.0

SEASON THEME:
BEYOND MEASURE

Each year Dawn Staley chooses a theme for the team and fans to center their season around, and it often reflects not just the state of South Carolina women’s basketball, but that of the game overall.

The Gamecocks’ 2025-26 season theme is Beyond Measure, which centers on the value of the whole person or group beyond the commonly measured scale. A player’s value to the team is not measured solely by her statline but also by a myriad of other ways she elevates her team. Championships and awards are not valued because they yield a trophy but also because they lift up a university, a city, a state. The value of the FAMS who support the team around the country is more than the value of ticket sales, but it is in the way they form a united community that supersedes all their difference.

More broadly, Beyond Measure is a reminder that the ceiling of the team and its players – and that of women’s basketball as a sport – will always shatter any limitations others may place on it.

2025-26 ROSTER

No.	Name	Pos.	Ht.	Yr.	Hometown/Last School
00	Ta’Niya Latson	G	5-8	Sr.	Miami, Fla./Florida State
1	Maddy McDaniel	G	5-9	So.	Upper Marlboro, Md./Bishop McNamara
5	Tessa Johnson	G	6-0	Jr.	Albertville, Minn./Saint Michael Albertville
8	Joyce Edwards	F	6-3	So.	Camden, S.C./Camden
11	Madina Okot	C	6-6	Sr.	Mumias, Kenya / Mississippi State
15	Adhel Tac	F	6-5	So.	Grand Prairie, Texas/South Grand Prairie
21	Chloe Kitts	F	6-2	Sr.	Oviedo, Fla./DME Academy
24	Ayla McDowell	G	6-1	Fr.	Cypress, Texas/Cypress Springs
25	Raven Johnson	G	5-9	Sr.	Atlanta, Ga./Westlake
30	Maryam Dauda	F	6-4	Sr.	Bentonville, Ark./Arkansas
44	Agot Makeer	G	6-0	Fr.	Thunder Bay, Ontario / Montverde Academy (FL)

Head Coach: Dawn Staley

Assoc. Head Coach: Lisa Boyer

Assistant Coaches: Jollette Law, Wendale Farrow, Mary Wooley, Khadijah Sessions

Sports Performance Coach: Molly Binetti; Athletic Trainer: Craig Oates

THE LAST TIME...

INDIVIDUAL

Scored 50 Points

South Carolina 51, Jocelyn Penn vs. Stetson, 1/4/03
Opponent Never

Scored 40 Points

South Carolina 51, Jocelyn Penn vs. Stetson, 1/4/03
Opponent 41, Caitlyn Clark, Iowa, 3/31/23

Scored 30 Points

South Carolina 31, Zia Cooke at Georgia, 1/2/23
Opponent 31, DeYona Gaston, Auburn, 2/2/25

Grabbed 20 Rebounds

South Carolina 20, Ashlyn Watkins vs. NC State, 4/5/24
Opponent 24, Teaira McCowan, at Mississippi State, 1/17/19

Grabbed 15 Rebounds

South Carolina 16, Kamilla Cardoso vs. Georgia, 2/18/24
Opponent 15 by Sarah Strong, vs. UConn, 4/6/25

Two Players with 20 or More Points

South Carolina Aliyah Boston 21/Zia Cooke 20 at Kentucky, 1/12/23
Opponent Azzi Fudd 24/Sarah Strong 24, vs. UConn, 4/6/25

Two Players with 10 or More Rebounds

South Carolina Ashlyn Watkins 20/Kamilla Cardoso 11 vs. NC State, 4/5/24
Opponent Angel Reese 13/Aneesah Morrow 10, vs. LSU, 3/10/24

Three or More Players with 10 or More Rebounds

South Carolina Raven Johnson 15/Kamilla Cardoso 10/Ashlyn Watkins 10 at Tennessee, 2/15/24
Opponent W. Rolle 12/J. Breland 10/L. Broomfield 10, vs. North Carolina, 12/19/10

Had 10 Assists

South Carolina 10, Chloe Kitts, at Ole Miss, 2/27/25
Opponent 10, Paige Bueckers, UConn, 2/16/25

Had Five Steals

South Carolina 6, Raven Johnson vs. Auburn, 2/2/25
Opponent 5, Dembele Mama, USF, 12/15/24

Had Five Blocked Shots

South Carolina 5, Sania Feagin at Ole Miss, 2/27/25
Opponent 5, Rita Igbokwe, vs. Ole Miss, 3/4/23

Had 20 Points and 20 Rebounds

South Carolina Aliyah Boston (28 pts/22 rebs) vs. N. Carolina, 3/25/22
Opponent Teaira McCowan (26 pts/24 rebs) at Mississippi State, 1/17/19

Had a Double-Double

South Carolina Joyce Edwards (13 pts/11 rebs) vs. Texas, 4/4/25
Opponent Sarah Strong (24 pts/15 rebs), vs. UConn, 4/6/25

Two Players had a Double-Double

South Carolina Chloe Kitts (21 pts/13 rebs) / Sania Feagin (12 pts/10 rebs) vs. Presbyterian, 3/22/24
Opponent Angel Reese (15 pts/13 rebs) / Aneesah Morrow (19 pts/10 rebs) vs. LSU, 3/10/24

Three or More Players had a Double-Double

South Carolina L. Amihere (11 pts/11 rebs) / A. Boston (11 pts/12 rebs) / L. Grissett (13 pts/10 rebs) / V. Saxton (19 pts/12 rebs) vs. Charleston, 11/25/20
Opponent Shakira Austin (10 pts/16 rebs) / Kaila Charles (17 pts/10 rebs) / Channise Lewis (10 pts/12 assts), Maryland, 11/18/18

Had a Triple-Double

South Carolina Chloe Kitts (16 pts/13 rebs/10 assts) at Ole Miss, 2/27/25
Opponent Never

TEAM

Scored 100 Points

South Carolina 101 vs. Florida, 2/13/25
Opponent 103, Clemson, 11/21/03

Won by 50 or More Points

South Carolina 108-48 (60) vs. Tennessee Tech, 3/21/25
Opponent 97-39 (58) at UConn, 12/17/07

Won by 30-49 Points

South Carolina 94-54 (40) vs. Grand Canyon, 11/3/25
Opponent 66-34 (32), Georgia, 3/4/11

Overcame More Than 15-Point Deficit to Win

South Carolina 18 (16-34) 6:24 in 2nd qtr. vs. Stanford, 12/21/21*
Opponent 16 (21-37) 1:43 in 2nd qtr., at Tennessee, 2/18/21

Shot 65% or Better from the Field

South Carolina .672 (39-58) at Texas A&M, 1/21/24
Opponent Never

Shot 60% or Better from the Field

South Carolina .606 (40-66) at Arkansas, 2/29/24
Opponent .604 (29-48), Vanderbilt, 1/18/01

Shot 50% or Better from the Field

South Carolina .596 (34-57) vs. Grand Canyon, 11/3/25
Opponent .500 (25-50), Auburn, 2/2/25

No Players in Double-Figure Points

South Carolina at Auburn, 1/19/12
Opponent at Georgia, 2/6/25

Five Players in Double-Figure Points

South Carolina vs. Grand Canyon, 11/3/25
Opponent vs. Indiana, 3/29/24

More Than Five Players in Double-Figure Points

South Carolina 6 vs. Texas A&M, 1/9/25
Opponent 5, at UCLA, 11/24/24

Faced AP Top-25 Opponent

Win 71-67 vs. No. 18 Maryland, 3/28/25
Loss 67-75 at No. 21 Tennessee, 2/18/21

Faced AP Top-10 Opponent

Win 54-50 vs. No. 7 Duke, 3/30/25
Loss 58-87 vs. No. 7 UConn, 2/16/25

Faced AP Top-5 Opponent

Win 74-57 vs. No. 5 Texas, 4/4/25
Loss 82-59 vs. No. 3 UConn, 4/6/25

Faced AP No. 1 Team

Win 64-45 vs. Texas, 3/9/25 (SEC Tournament championship)
Loss 68-93 vs. Baylor, 3/30/19 (NCAA Sweet 16)

Overtime Game

Win 64-57 at Ole Miss, 2/19/23
Loss 69-70 at Missouri, 12/30/21

Double-Overtime Game

Win 82-73 at Purdue, 12/16/18
Loss 92-94 at Clemson, 11/19/09

South Carolina Was Ranked (AP Poll)

No. 1 No. 1, 11/18/24
Top 5 No. 2, 10/14/25
Top 10 No. 6, 2/24/25
Top 25 No. 15, 3/19/19

SOUTH CAROLINA SINGLE-QUARTER RECORDS

TEAM			INDIVIDUAL		
Scoring			Scoring		
Most	Points		Most	Points	
1. vs. Saint Peter's, 11/22/16, 1st qtr.	37		1. Kaela Davis at Auburn, 1/5/17, 1st qtr.	19	
2. vs. Florida, 2/13/25, 1st qtr.	36		2. A'ja Wilson vs. Notre Dame, 11/26/17, 4th qtr.	18	
at Kentucky, 1/12/23, 4th qtr.	36		3. Alexis Jennings at Florida, 2/17/19, 3rd qtr.	17	
vs. Alabama, 2/3/22, 1st qtr.	36		4. Zia Cooke at Georgia, 1/2/23, 4th qtr.	15	
at Vanderbilt, 1/12/20, 3rd qtr.	36		Aliyah Boston vs. Florida, 12/31/20, 2nd qtr.	15	
vs. Alabama State, 3rd qtr.	36		M. Herbert Harrigan vs. TX A&M, 3/1/20, 1st qtr.	15	
			Kaela Davis vs. Quinnipiac, 3/25/17, 3rd qtr.	15	
			Tina Roy vs. Arkansas, 1/3/16, 3rd qtr.	15	
Fewest	Points		Rebounding		
1. vs. App State, 12/5/18, 4th qtr.	5		Most	Rebs	
2. vs. Oregon State, 3/23/21, 4th qtr.	6		1. Kamilla Cardoso vs. Ole Miss, 3/4/23, 2nd qtr.	9	
vs. Indiana, 11/28/19, 4th qtr.	6		Aliyah Boston vs. N. Carolina, 3/25/22, 4th qtr.	9	
vs. St. John's, 11/25/17, 2nd qtr.	6		LeLe Grissett at Vanderbilt, 1/14/21, 4th qtr.	9	
vs. Stanford, 3/31/17, 2nd qtr.	6		Aliyah Boston vs. UConn, 2/10/20, 1st qtr.	9	
vs. UCLA, 12/18/16, 1st qtr.	6		Aliyah Boston vs. Arkansas, 1/9/20, 1st qtr.	9	
			Alaina Coates at Arkansas, 2/5/17, 1st qtr.	9	
			Alaina Coates at Georgia, 1/26/17, 2nd qtr.	9	
Fewest Allowed	Points		Rebounding		
1. vs. Texas, 3/30/21, 4th qtr.	0		Total	Rebs	
at Vanderbilt, 1/14/21, 2nd qtr.	0		1. vs. Arkansas, 3/7/20, 4th qtr.	28	
at Ole Miss, 1/30/20, 1st qtr.	0		2. vs. Charleston, 11/25/20, 3rd qtr.	22	
4. at Cal Poly, 11/22/22, 1st qtr.	2		3. vs. Howard, 3/18/22, 1st qtr.	21	
vs. Howard, 3/18/22, 2nd qtr.	2		4. vs Coastal Carolina, 12/21/22, 1st qtr.	20	
vs. Howard, 3/18/22, 1st qtr.	2		vs. Hampton, 11/27/22, 3rd qtr.	20	
vs. UConn, 2/10/20, 1st qtr.	2		vs. Howard, 3/18/22, 3rd qtr.	20	
			vs. Howard, 3/18/22, 2nd qtr.	20	
			vs. Charleston, 11/25/20, 1st qtr.	20	
			at Ohio State, 11/14/16, 1st qtr.	20	
Most Allowed	Points		Margin	Rebs	Margin
1. vs. Baylor, 12/2/18, 1st qtr.	32		1. vs. Hampton, 11/27/22, 3rd qtr.	20-2	+18
at Maryland, 11/13/17, 4th qtr.	32		vs. Charleston, 11/25/20, 3rd qtr.	22-4	+18
vs. Kentucky, 2/26/17, 4th qtr.	32		3. vs. Arkansas, 1/22/23, 2nd qtr.	19-2	+17
4. vs. Arkansas, 3/8/19, 3rd qtr.	30		4. vs. Arkansas, 1/22/23, 3rd qtr.	18-2	+16
vs. Connecticut, 3/26/18, 1st qtr.	30		vs. Howard, 3/18/22, 2nd qtr.	20-4	+16
vs. Syracuse, 3/25/16, 4th qtr.	30		vs. Arkansas, 3/7/20, 4th qtr.	21-5	+16
Margin of Difference			Rebounding		
Lead	Score	Margin	Total	Rebs	
1. vs. Alabama State, 11/5/19, 3rd qtr.	36-9	+37	1. vs. Arkansas, 3/7/20, 4th qtr.	28	
2. vs. App State, 11/17/19, 1st qtr.	35-3	+32	2. vs. Charleston, 11/25/20, 3rd qtr.	22	
3. vs. Charleston, 11/25/20, 3rd qtr.	34-8	+26	3. vs. Howard, 3/18/22, 1st qtr.	21	
vs. USC Upstate, 11/21/19, 3rd qtr.	33-7	+26	4. vs Coastal Carolina, 12/21/22, 1st qtr.	20	
vs. Arkansas, 1/3/16, 2nd qtr.	35-9	+26	vs. Hampton, 11/27/22, 3rd qtr.	20	
5. vs. Saint Peter's, 11/22/16, 1st qtr.	37-12	+25	vs. Howard, 3/18/22, 3rd qtr.	20	
			vs. Howard, 3/18/22, 2nd qtr.	20	
			vs. Charleston, 11/25/20, 1st qtr.	20	
			at Ohio State, 11/14/16, 1st qtr.	20	
Deficit	Score	Margin	Margin	Rebs	Margin
1. vs. UConn, 2/1/18, 2nd qtr.	8-29	-21	1. vs. Hampton, 11/27/22, 3rd qtr.	20-2	+18
2. at Tennessee, 2/15/18, 3rd qtr.	9-29	-20	vs. Charleston, 11/25/20, 3rd qtr.	22-4	+18
3. vs. Baylor, 12/2/18, 1st qtr.	13-32	-19	3. vs. Arkansas, 1/22/23, 2nd qtr.	19-2	+17
at Mississippi State, 2/5/18, 4th qtr.	9-28	-19	4. vs. Arkansas, 1/22/23, 3rd qtr.	18-2	+16
5. vs. Indiana, 11/28/19, 4th qtr.	6-24	-18	vs. Howard, 3/18/22, 2nd qtr.	20-4	+16
vs. Connecticut, 3/26/18, 1st qtr.	12-30	-18	vs. Arkansas, 3/7/20, 4th qtr.	21-5	+16
Field Goals			Rebounding		
Made	FGM		Total	Rebs	
1. at Florida, 2/27/20, 1st qtr.	15		1. vs. Arkansas, 3/7/20, 4th qtr.	28	
vs. Saint Peter's, 11/22/16, 1st qtr.	15		2. vs. Charleston, 11/25/20, 3rd qtr.	22	
3. vs. Florida, 2/13/25, 1st qtr.	14		3. vs. Howard, 3/18/22, 1st qtr.	21	
vs. Coastal Carolina, 12/21/22, 1st qtr.	14		4. vs Coastal Carolina, 12/21/22, 1st qtr.	20	
vs. Alabama, 2/3/22, 1st qtr.	14		vs. Hampton, 11/27/22, 3rd qtr.	20	
vs. App State, 11/17/19, 1st qtr.	14		vs. Howard, 3/18/22, 3rd qtr.	20	
vs. Notre Dame, 11/26/17, 4th qtr.	14		vs. Howard, 3/18/22, 2nd qtr.	20	
vs. Arkansas, 1/3/16, 2nd qtr.	14		vs. Charleston, 11/25/20, 1st qtr.	20	
			at Ohio State, 11/14/16, 1st qtr.	20	
Attempts	FGA		Margin	Rebs	Margin
1. vs. Arkansas, 3/7/20, 4th qtr.	28		1. vs. Hampton, 11/27/22, 3rd qtr.	20-2	+18
2. vs. Arkansas, 2/20/25, 3rd qtr.	25		vs. Charleston, 11/25/20, 3rd qtr.	22-4	+18
vs. Oklahoma, 1/19/25, 2nd qtr.	25		3. vs. Arkansas, 1/22/23, 2nd qtr.	19-2	+17
vs. Purdue, 11/30/24, 1st qtr.	25		4. vs. Arkansas, 1/22/23, 3rd qtr.	18-2	+16
vs. Howard, 3/18/22, 1st qtr.	25		vs. Howard, 3/18/22, 2nd qtr.	20-4	+16
vs. Arkansas, 1/9/20, 3rd qtr.	25		vs. Arkansas, 3/7/20, 4th qtr.	21-5	+16



Head Coach DAWN STALEY

18th Season at South Carolina
26th Season in Career

Since thrusting South Carolina into the national spotlight when she was hired in May 2008, Dawn Staley has made the Gamecocks a mainstay in the battle for SEC and national championships. The Naismith Memorial Basketball Hall of Fame inductee as a player is angling for another induction as a coach with her standing as one of five head coaches with at least three women's basketball National Championships and the only Black basketball head coach with multiple national titles, one of five head coaches to lead an undefeated team to a National Championship, and the first Black head coach of the USA Basketball Senior National Team.

In Staley's 17 seasons at the helm of the Gamecocks, highlights include:

- Three National Championships (2017, 2022, 2024)
- Seven NCAA Final Fours in the last 10 tournaments (2015, 2017, 2021, 2022, 2023, 2024, 2025)
- Ranking in the AP Top 25 every week since Dec. 10, 2012, the second-longest active streak in the nation and ninth-longest all-time (248)
- 38 straight weeks at No. 1 in the AP Poll, just the third program to go wire-to-wire in back-to-back seasons
- 86 total weeks at No. 1 in the AP Poll, the third-most in the history of that poll
- Eight 30-win seasons, including a program-record 38 wins in 2023-24
- Nine SEC regular-season championships (2014, 2015, 2016, 2017, 2020, 2022, 2023, 2024, 2025)
- Nine SEC Tournament titles (2015, 2016, 2017, 2018, 2020, 2021, 2023, 2024, 2025)
- SEC-record 57 consecutive league regular-season victories, which ranks sixth in NCAA history for conference win streaks
- Four top-two recruiting classes (#2 in 2024, #1 in 2021, #1 in 2019, #2 in 2014)
- 11 NCAA Attendance titles (2015, 2016, 2017, 2018, 2019, 2020, 2021*, 2022, 2023, 2024, 2025)
- 18 WNBA Draft selections, including 11 first-round and two overall No. 1 picks

While her coaching career is in full bloom, Staley is still recognized for her body of work as a one of the most decorated participants in United States women's basketball history. The Naismith Memorial Basketball Hall of Fame solidified that legacy with her enshrinement as part of the Class of 2013. The Phoenix Club of Philadelphia established the Dawn Staley Award recognizing the nation's top guard in women's Division I basketball in 2013 as well. Staley was inducted into the Women's Basketball Hall of Fame as part of the Class of 2012, and she was part of the FIBA Hall of Fame Class of 2025.

In her 26th season as a head coach, Staley has led her college teams to 15 25-win seasons, a total of 21 postseason appearances (two WNIT) and 239 weeks in the Associated Press top 10, including 86 in the No. 1 spot – the third most times in the top spot in the history of that poll. Her .773 winning percentage (648-190) ranks seventh in the nation among active head coaches with at least 15 years of experience and ninth all-time.

Also a force in USA Basketball, Staley was named the U.S. Women's National Team head coach for 2017-21, leading the U.S. to 2018 FIBA World Cup gold to earn USA National Coach of the Year honors that year, adding gold medals at the 2019 and 2021 FIBA AmeriCups and stretching the U.S. Olympic gold medal streak to seven straight at the 2020 Tokyo Olympic Games, for which she again earned Coach of the Year honors. Prior to that appointment, Staley led three other U.S. teams to gold medals – 2015 FIBA U19 World Championships, 2014 FIBA U18 Americas Championship, 2007 Pan Am Games – and served as an assistant on the Senior National Team 2006-08 and again 2014-16, during which the U.S. claimed gold in the 2014 FIBA World Championship and the 2008 and 2016 Olympics.

STALEY AT SOUTH CAROLINA YEAR-BY-YEAR

Year	School	Record	Conf. Rec.	Conf. Finish	Postseason
2008-09	South Carolina	10-18	2-12	11th	
2009-10	South Carolina	14-15	7-9	T-7th	
2010-11	South Carolina	18-15	8-8	T-5th	WNIT 2nd Round
2011-12	South Carolina	25-10	10-6	T-4th	NCAA Sweet 16
2012-13	South Carolina	25-8	11-5	T-4th	NCAA 2nd Round
2013-14	South Carolina	29-5	14-2	1st	NCAA Sweet 16
2014-15	South Carolina	34-3	15-1	T-1st	SEC Tourn. Champ./NCAA Final Four
2015-16	South Carolina	33-2	16-0	1st	SEC Tourn. Champ./NCAA Sweet 16
2016-17	South Carolina	33-4	14-2	1st	SEC Tourn. Champ./NCAA Champ.
2017-18	South Carolina	29-7	12-4	T-2nd	SEC Tourn. Champ./NCAA Elite Eight
2018-19	South Carolina	23-10	13-3	2nd	NCAA Sweet 16
2019-20	South Carolina	32-1	16-0	1st	SEC Tourn. Champ./NCAA canceled)
2020-21	South Carolina	26-5	14-2	2nd	SEC Tourn. Champ./NCAA Final Four
2021-22	South Carolina	35-2	15-1	1st	NCAA Champion
2022-23	South Carolina	36-1	16-0	1st	SEC Tourn. Champ./NCAA Final Four
2023-24	South Carolina	38-0	16-0	1st	SEC Tourn., Champ./NCAA Champ
2024-25	South Carolina	35-4	15-1	T-1st	SEC Tourn. Champ./NCAA Runner-Up
2025-26	South Carolina	1-0			
At Temple	8 seasons	172-80	99-25	3 A-10 Titles	4 A-10 Tourn. Titles, 6 NCAA appearances
At SC	18th season	476-110	214-56	9 SEC Titles	9 SEC Trn. Titles, 3 NCAA Titles
Career	26th season	648-190	313-81		

STALEY HIGHLIGHTS

Coaching Highlights

College

- 18 NCAA Tournament Appearances (12 at SC)
- 3x NCAA National Champion (2017, 2022, 2024)
- 7 30-Win Seasons
- 10 Regular-Season Conference Titles (SEC 2014, 2015, 2016, 2017, 2020, 2022, 2023, 2024, 2025; A-10 2008)
- 12 Conference Tournament Titles (SEC 2015, 2016, 2017, 2018, 2020, 2021, 2023, 2024; A-10 2002, 2004, 2005, 2006)
- 5-time National Coach of the Year (2014, 2020, 2022, 2023)
- 4-time WBCA Region Coach of the Year (Region 3 2014, 2015, 2016; Region 1 2005)
- 9x Conference Coach of the Year (SEC 2014, 2015, 2016, 2020, 2022, 2023, 2024; A-10 2004, 2005)

USA Basketball

- Senior National Team Head Coach (2017-21) – Tokyo Olympics gold (2020); FIBA AmeriCup gold (2021); co-National Coach of the Year (2021); FIBA AmeriCup gold (2019), FIBA World Cup gold (2018), National Coach of the Year (2018)
- Senior National Team Asst. Coach (2006-08, 2014-16) – Rio Olympics gold medal (2016), FIBA World Championship gold medal (2014), Beijing Olympics gold medal (2008), FIBA Americas Championship gold medal (2007), FIBA World Championship bronze medal (2006)
- U19 National Team Head Coach – FIBA U19 World Championship gold medal (2015), co-National Coach of the Year (2015)
- U18 National Team Head Coach – FIBA U18 Americas Championship gold medal (2014)
- Pan Am Games Head Coach – Gold medal (2007)

Playing Highlights

U.S. Professional – 11 seasons

- Five-time WNBA All-Star (2001, 2002, 2003, 2005, 2006)
- Two-time ABL All-Star (1997, 1998)
- WNBA All-Decade Team

USA Basketball

- Olympic gold medalist (1996, 2000, 2004)
- Flag bearer for U.S. in Olympic Games Opening Ceremony (2004)
- Two-time USA Basketball Female Athlete of the Year (1994, 2004)

College – Virginia (1989-92)

- Kodak All-America (1990, 1991, 1992)
- Honda-Broderick Cup Award for Collegiate Female Athlete of the Year (1991)
- Two-time ACC Player of the Year (1991, 1992)
- NCAA Tournament MOP (1991)

Other Notables

- FIBA Hall of Fame, Class of 2025
- Naismith Mem. Basketball Hall of Fame, Class of 2013
- Order of the Palmetto Recipient (2013)
- Women's Basketball Hall of Fame, Class of 2012
- Two-time Wanamaker Award (1997, 2005)
- Henry P. Iba Citizenship Award (2007)

At the helm of the Gamecocks over the last 17 seasons, Staley has been named National Coach of the Year five times (2014, 2020, 2022, 2023, 2024). Her 2020 unanimous selection made her the first former Naismith Player of the Year to earn the Naismith Coach of the Year award, and she became the first men's or women's coach to claim the award in three straight seasons 2022-24. She is a seven-time SEC Coach of the Year and was the 2012 BCA Female Coach of the Year. She is the only Gamecock basketball coach – men's or women's – to amass 300 victories at South Carolina and became the fastest coach to 200 wins in program history, needing just 277 games at South Carolina to reach the plateau. She is the program's all-time winningest coach with 475 wins, a .812 (475-110) winning percentage and a program-record 14 postseason appearances.

In the vaunted SEC, Staley's 214 league wins are the most among active league coaches and third all-time, trailing just Women's Basketball Hall of Fame Inductees Andy Landers (Georgia, 273) and Pat Summitt (Tennessee, 306). She was the second fastest to 200 league wins (255 games), trailing only Summitt at 229. Her .793 SEC winning percentage (214-56) is second only to Summitt (.874) in league history. Her Gamecocks are the only SEC program with multiple 16-0 seasons in league history, hitting that mark four times (2015-16, 2019-20, 2022-23, 2023-24). Staley's back-to-back SEC undefeated seasons helped the Gamecocks to an SEC-record 57-game win streak in league play, which ranks sixth in NCAA history for conference win streaks.

In addition to coaching two National Players of the Year, two National Defensive Players of the Year and a National Freshman of the Year, Staley has helped 13 Gamecocks collect 29 All-America selections, three to pick up seven SEC Player of the Year honors, four to earn SEC Defensive Player of the Year recognition a total of eight times, three to SEC 6th Player of the Year honors and six to capture SEC Freshman of the Year. She has coached 23 Gamecocks to All-SEC honors a combined 44 times, including 22 first-team selections. Since her first Gamecock was selected in the 2015 WNBA Draft, a total of 18 South Carolina have been chosen, which is the second-most of any program in that timeframe. Of those 18, 11 have been first-round picks, highlighted by two No. 1 overall picks since 2018. Three Gamecocks have been named WNBA Rookie of the Year and have amassed 13 All-Star selections. Aja Wilson went on to become a three-time WNBA MVP and two-time WNBA Defensive Player of the Year.



SOUTH CAROLINA DAWN STALEY ERA SINGLE-GAME RECORDS

Scoring

Most	Points
1. vs. Charleston, 11/25/20	119
2. vs. Maryland, 11/12/23	114
3. vs. Savannah State, 12/14/14	111

Fewest	Points
1. at Stanford, 11/26/10	32*
2. vs. Georgia, 3/4/11	34
3. vs. Mississippi State, 3/5/09	39

Fewest Allowed	Points
1. vs. Mississippi Valley State, 11/24/23	19*
2. vs. Howard, 3/18/22	21
vs. South Carolina State, 12/14/11	21

Most Allowed	Points
1. at Connecticut, 2/11/19	97
2. vs. Arkansas, 3/8/19	95
3. 3x, most recent, vs. Baylor, 12/2/18	94

Margin of Victory	Score	Margin
1. vs. Miss. Valley State, 11/24/23	101-19	+82
2. vs. Charleston, 11/25/20	119-38	+81
3. 3x, most recent, vs. Presby., 12/16/23	99-29	+70

Margin of Defeat	Score	Margin
1. at Stanford, 11/26/10	32-70	-38
2. vs. Georgia, 3/4/11	34-66	-32
3. vs. Stanford, 12/19/08	47-78	-31

Field Goals

Made	FGM
1. vs. Clemson, 11/16/23	44
2. 4x, most recent, vs. Tenn. Tech, 3/21/25	43

Attempts	FGA
1. vs. Clemson, 11/16/23	83
vs. Maryland, 11/12/23	83
3. 2x, most recent, vs. Arkansas, 2/20/25	82

Highest Percentage (Min. 40 FGA)	FGM-A	Pct
1. vs. Morgan State, 12/6/23	41-60	.683
2. at Texas A&M, 1/21/24	39-58	.672
3. vs. Tennessee Tech, 3/21/25	43-64	.672

Lowest Percentage (Min. 40 FGA)	FGM-A	Pct
1. at Stanford, 11/26/10	12-55	.218
2. vs. Georgia, 3/4/11	12-52	.231
3. at Florida, 1/20/13	15-64	.234

Lowest %age Allowed (Min. 40 FGA)	FGM-A	Pct
1. vs. Miss. Valley State, 11/24/23	8-67	.119*
2. vs. South Carolina State, 12/14/11	6-48	.125
3. vs. Howard, 3/18/22	8-54	.148

Highest %age Allowed (Min. 40 FGA)	FGM-A	Pct
1. vs. UConn, 3/26/18	37-63	.587
2. vs. UConn, 2/11/19	37-65	.569
3. 2x, most recent vs. UConn, 12/28/08	35-62	.565

3-Point Field Goals

Made	3FGM
1. vs. Minnesota, 12/11/16	16
2. vs. Temple, 12/21/18	15
3. 2x, most recent, vs. App. State, 12/5/18	14

Attempts	3FGA
1. vs. Howard, 3/18/22	38
2. vs. Minnesota, 12/11/16	33
3. vs. Syracuse, 3/25/16	32

Percentage (Min. 5 3FGA)	3FGM-A	Pct
1. vs. ETSU, 11/22/18	11-16	.688
2. 4x, most recent, at UCLA, 11/24/24	8-12	.667

Free Throws

Made	FTM
1. vs. Savannah State, 12/14/14	34
vs. Oregon State, 3/25/14	34
3. 3x, most recent, vs. Missouri, 1/10/16	32

Attempts	FTA
1. at Mississippi State, 1/6/13	50
2. vs. Savannah State, 12/28/13	48
3. 2x, most recent, vs. Charleston, 11/25/20	47

Percentage (Min. 10 FTA)	FTM-A	Pct
1. vs. Florida, 2/13/25	21-22	.955
2. vs. Alabama, 1/31/21	19-20	.950
3. vs. Quinnipiac, 3/25/17	18-19	.947

Rebounding

Total	Rebs
1. vs. Arkansas, 1/22/23	74
2. vs. Clemson, 11/16/23	73
vs. Charleston, 11/25/20	73

Margin	Rebs	Margin
1. vs. Arkansas, 1/22/23	74-17	+57
2. vs. Hampton, 11/27/22	62-15	+47
3. vs. Clemson, 11/16/23	73-27	+46

Offensive	Off. Rebs
1. vs. Arkansas, 1/22/23	32
2. vs. Tennessee, 2/20/22	31
3. 2x, most recent, vs. Purdue, 11/30/24	30

Turnovers

Fewest	TOs
1. vs. Purdue, 11/30/24	4
at Tennessee, 2/2/12	4
2. 10x, most recent, at Ole Miss, 1/4/18	5

Most	TOs
1. at Wake Forest, 12/3/08	32
2. 3x, most recent, at Ole Miss, 2/25/16	29

Assists

1. at Kentucky, 2/25/24	30
vs. Clemson, 11/16/23	30
vs. Maryland, 11/12/23	30

Steals

1. at Alabama State, 11/11/18	22
2. 3x, most recent, vs. Alabama St., 11/10/17	21

Blocked Shots

1. vs. Presbyterian, 12/16/23	17*
vs. Appalachian State, 11/17/19	17*
3. 5x, most recent, vs. South Dak. St., 11/20/23	16

* indicates also a school record



ALL-TIME SELLOUTS

18,478	Georgia, 2/18/24
18,167	UConn, 2/11/24
18,000	Kentucky, 3/2/25
18,000	UConn, 2/16/25
18,000	Auburn, 2/2/25
18,000	LSU, 1/24/25
18,000	Oklahoma, 1/19/25
18,000	Texas, 1/12/25
18,000	East Carolina, 11/17/24
18,000	Tennessee, 3/3/24
18,000	Ole Miss, 2/5/24
18,000	Vanderbilt, 1/28/24
18,000	Georgia, 2/26/23
18,000	LSU, 2/12/23
18,000	Tennessee, 2/20/22
18,000	Texas A&M, 3/1/20
18,000	UConn, 2/10/20
18,000	Mississippi State, 3/3/19
18,000	UConn, 2/1/18
18,000	Kentucky, 2/26/17
18,000	UConn, 2/8/16

YEAR-BY-YEAR RECORD

Year	Record	Pct.	Att. Avg.
2002-03	14-2	.875	3,244
2003-04	5-6	.455	1,828
2004-05	8-9	.471	1,764
2005-06	12-5	.706	1,455
2006-07	15-5	.750	1,845
2007-08	12-6	.667	1,802
2008-09	6-9	.400	2,793
2009-10	7-5	.583	3,442
2010-11	14-5	.737	2,996
2011-12	12-3	.800	3,139
2012-13	12-3	.800	4,082
2013-14	16-0	1.000	6,371
2014-15	16-0	1.000	12,293
2015-16	16-1	.941	14,364
2016-17	15-1	.938	12,277
2017-18	15-2	.882	13,239
2018-19	11-4	.733	11,542
2019-20	15-0	1.000	12,185
2020-21	10-1	.909	3,500*
2021-22	16-0	1.000	12,268
2022-23	17-0	1.000	12,942
2023-24	17-0	1.000	16,067
2024-25	16-1	.941	16,437
2025-26	1-0	1.000	15,601
Total	298-68	.814	7,744*
Staley Era	232-35	.869	9,973*

* 2020-21 attendance not counted in average or streaks due to COVID-19 restrictions

In women's basketball, Colonial Life Arena has become one of the most feared places to play as enormous crowds fill the building with passion for the Gamecocks.

The state of South Carolina has rallied around head coach Dawn Staley's program in unprecedented numbers as the Gamecocks have led the nation in average attendance in each of the last 10 seasons and boast 21 sellouts (18,000) in the last 10 seasons of full capacity arenas.

Colonial Life Arena is more than just the home of South Carolina men's and women's basketball, though. It is also a thriving entertainment venue that the city of Columbia and its surrounding metropolitan area are able to enjoy throughout the year.

Colonial Life Arena is the largest arena in the state of South Carolina with 18,000 seats, and the 10th-largest on-campus basketball facility in the nation. Located on the beautiful University of South Carolina campus, this one-of-a-kind facility features 41 suites, four entertainment suites, and the Frank McGuire Club, a full-service hospitality room that has a capacity of 300. The state-of-the-art facility also features plush seating, a technologically advanced sound system and a one-of-a-kind selection of unique concession foods that will delight fans of all ages.

In Summer 2017, a 12-display center-hung video board and ribbon boards were added to the arena bowl at a cost of \$4.2 million. The center-hung board features four convex-curved main displays that measure approximately 12' x 20' and can show any combination of live video, instant replays, statistics and game information, graphics and animations, and sponsorship messages.

The Arena has hosted numerous sold out shows, including Barnum and Bailey Circus, Paul McCartney, country superstars Kenny Chesney and Taylor Swift, WWE Wrestling, Kanye West and numerous other acts.

The largest building ever constructed at the University of South Carolina at 342,000 square feet, the Arena has an intimate double-deck design that puts every seat close to the action. The cantilever of the upper deck over the lower deck extends further than any other arena of its size with great sight lines.

Two spacious locker rooms for Gamecock men's and women's basketball include team meeting rooms, recruiting rooms, coaches locker rooms and an athletic training room.

COLONIAL LIFE ARENA NOTABLES

- 10-Time National Attendance Leader (2015-present)
- NCAA Tournament Host in 2015, 2016, 2017, 2018, 2022, 2023, 2024
- 140 consecutive regular-season games with at least 10,000 fans (Jan. 2, 2015)*
- 21 official sellouts (18,000) since 2015-16 season
- 6 undefeated seasons
- Longest home win streak – 71 games (12/17/20-2/13/25)

* 2020-21 attendance not counted in average or streaks due to COVID-19 regulation restrictions

"It is a beautiful thing to see unfold because a lot of people really didn't think it could get done. I tip my hat to Gamecock Nation for making this a wonderful place and creating a home court advantage that allows us to win close basketball games."

– South Carolina Head Coach Dawn Staley

2025-26 BOX SCORES

NCAA

Official Basketball Box Score - Final

Grand Canyon at South Carolina

11/03/25 Colonial Life Arena, Columbia

2025-26 Women's Basketball

Game Time: 7:00 PM

Game Duration: 2:03

Attendance: 15,601

Officials: Tommi Paris, Tiffany Bird, Gina Cantanzariti

Grand Canyon - 54

Record: 0-1

NO.	Name	Min	FG M-A	3P M-A	FT M-A	Rebounds OR DR TOT	Fouls PF FD	TP	AS	TO	ST	Blocks BS BA	+/-	
1	Anisa Jeffries	F 29:58	5-10	0-3	1-1	2 3 5	3 1 11	1	1	0	0	0	-29	
11	Holly Griffiths	F 04:56	0-1	0-1	0-0	0 0 0	2 0 0	0	0	1	0	0	-6	
0	Chloe Mann	G 22:35	4-12	3-8	4-4	1 0 1	3 5 15	2	2	0	0	1	-24	
8	Sifa Joyeuse	G 17:45	2-9	1-6	1-2	0 4 4	2 3 6	0	1	0	1	0	-16	
20	Juliana LaMendola	G 18:38	1-5	0-4	0-0	1 1 2	5 2 2	2	2	0	0	0	-20	
54	Faith Carson	16:48	1-3	0-2	0-0	0 4 4	3 2 2	0	1	0	1	0	-21	
3	AleJah Douglas	26:19	4-10	3-6	5-6	1 2 3	2 4 16	0	2	0	0	1	-26	
15	Favor Ayodele	10:04	0-1	0-0	0-0	2 1 3	3 1 0	0	0	0	1	1	-17	
33	Ines Zounia	06:28	0-3	0-1	0-0	0 0 0	1 0 0	0	0	3	1	0	-13	
6	Casey Valenti-Paea	10:08	0-4	0-1	0-0	0 1 1	0 0 0	0	1	1	0	2	-6	
24	Norah Moo	17:17	0-1	0-0	1-2	2 0 2	0 1 1	0	0	0	0	1	-13	
7	Karley Johnson	09:12	0-0	0-0	0-0	1 1 2	2 1 0	0	1	1	1	0	2	
4	Diamond Wright	07:29	0-2	0-1	1-2	0 0 0	0 1 1	0	0	0	0	0	-8	
22	Kaitlyn Elsholz	02:23	0-1	0-1	0-0	0 0 0	0 0 0	0	0	0	0	0	-1	
Team						2 2 4	0 0	0	2					
Totals			17:62	7-34	13-17	12 19 31	26 21	54	6	17	3	3	6	-40

Major Fouls: NONE

Shooting By Period		
1 st FG%	4-13	30.8%
3PT%	1-7	14.3%
FT%	1-1	100%
2 nd FG%	5-17	29.4%
3PT%	4-13	30.8%
FT%	7-10	70%
3 rd FG%	6-17	35.3%
3PT%	2-8	25.0%
FT%	2-2	100%
4 th FG%	2-15	13.3%
3PT%	0-6	0.0%
FT%	3-4	75%
GM FG%	17-62	27.4%
3PT%	7-34	20.6%
FT%	13-17	76.5%

Dead Ball Rebounds: 3, 2

South Carolina - 94

Record: 1-0

NO.	Name	Min	FG M-A	3P M-A	FT M-A	Rebounds OR DR TOT	Fouls PF FD	TP	AS	TO	ST	Blocks BS BA	+/-	
8	Joyce Edwards	F 27:10	5-11	0-2	3-4	2 3 5	3 2 13	1	2	0	1	1	30	
11	Madina Okoi	C 17:26	4-5	0-0	4-6	0 4 4	3 7 12	0	0	0	0	0	25	
00	Ta'Niya Latson	G 28:06	7-10	1-2	5-8	0 1 1	2 6 20	4	2	1	0	1	34	
5	Tessa Johnson	G 32:31	8-13	3-6	0-0	1 4 5	1 2 19	3	1	1	1	0	38	
25	Raven Johnson	G 25:48	4-6	3-5	0-0	0 8 8	2 0 11	7	1	3	0	0	23	
1	Maddy McDaniel	07:41	1-2	1-1	0-0	0 0 0	2 1 3	2	0	0	0	0	15	
44	Agot Makeer	19:06	1-3	1-2	2-2	0 2 2	4 2 5	2	3	0	3	0	8	
30	Maryam Dauda	09:58	0-0	0-0	0-0	0 2 2	1 0 0	0	0	0	0	0	1	
24	Ayla McDowell	17:29	3-5	0-1	3-4	1 1 2	2 4 9	0	2	1	0	0	10	
15	Adhel Tac	14:45	1-2	0-0	0-1	1 5 6	1 2 2	0	0	0	0	1	16	
Team						0 3 3	0 0	0	0					
Totals			34:57	9-19	17-25	5 33 38	21 26	94	19	11	6	6	3	40

Major Fouls: NONE

Shooting By Period		
1 st FG%	10-16	62.5%
3PT%	4-9	44.4%
FT%	5-7	71.4%
2 nd FG%	12-17	70.6%
3PT%	5-7	71.4%
FT%	2-3	66.7%
3 rd FG%	6-12	50.0%
3PT%	0-2	0.0%
FT%	7-11	63.6%
4 th FG%	6-12	50.0%
3PT%	0-1	0.0%
FT%	3-4	75%
GM FG%	34-57	59.6%
3PT%	9-19	47.4%
FT%	17-25	68.0%

Dead Ball Rebounds: 5, 1

GCU

USC

Biggest lead

0 (1st 10:00) 41 (4th 2:19)

Best Scoring Run

5 (2nd 3:25) 15 (1st 0:32)

Lead Changes

0

Times Tied

0

Time with Lead

00:00 39:49

Points from

GCU

USC

Turnovers

10

22

Paint

18

40

Second Chance

15

14

Fast Breaks

2

32

Bench

20

19

Period by Period Scoring

1st2nd3rd4thTOT

GCU

10

21

16

7

54

USC

29

31

19

15

94

2025-26 CUMULATIVE STATS



2025-26 South Carolina Women's Basketball
Combined Team Statistics
All games

Page 1/1
as of Nov 04, 2025

Game Records

Record	Overall	Home	Away	Neutral
ALL GAMES	1-0	1-0	0-0	0-0
CONFERENCE	0-0	0-0	0-0	0-0
NON-CONFERENCE	1-0	1-0	0-0	0-0

Score by Periods

Team	1st	2nd	3rd	4th	OT	TOT
South Carolina	29	31	19	15	0	94
Opponents	10	21	16	7	0	54

Team Box Score

No.	Player				Total		3-Point		F-Throw		Rebounds											
		GP-GS	MIN	AVG	FG-FGA	FG%	3FG-3FGA	3FG%	FT-FTA	FT%	OFF	DEF	TOT	AVG	PF	DQ	A	TO	BLK	STL	PTS	AVG
00	LATSON, Ta'Niya	1-1	28:06	28.1	7-10	.700	1-2	.500	5-8	.625	0	1	1	1.0	2	0	4	2	0	1	20	20.0
5	JOHNSON, Tessa	1-1	32:31	32.5	8-13	.615	3-6	.500	0-0	.000	1	4	5	5.0	1	0	3	1	1	1	19	19.0
8	EDWARDS, Joyce	1-1	27:10	27.2	5-11	.455	0-2	.000	3-4	.750	2	3	5	5.0	3	0	1	2	1	0	13	13.0
11	OKOT, Madina	1-1	17:26	17.4	4-5	.800	0-0	.000	4-6	.667	0	4	4	4.0	3	0	0	0	0	0	12	12.0
25	JOHNSON, Raven	1-1	25:48	25.8	4-6	.667	3-5	.600	0-0	.000	0	8	8	8.0	2	0	7	1	0	3	11	11.0
24	MCDOWELL, Ayla	1-0	17:29	17.5	3-5	.600	0-1	.000	3-4	.750	1	1	2	2.0	2	0	0	2	0	1	9	9.0
44	MAKEER, Agot	1-0	19:06	19.1	1-3	.333	1-2	.500	2-2	1.000	0	2	2	2.0	4	0	2	3	3	0	5	5.0
1	MCDANIEL, Maddy	1-0	07:41	7.7	1-2	.500	1-1	1.000	0-0	.000	0	0	0	0.0	2	0	2	0	0	0	3	3.0
15	TAC, Adhel	1-0	14:45	14.8	1-2	.500	0-0	.000	0-1	.000	1	5	6	6.0	1	0	0	0	1	0	2	2.0
30	DAUDA, Maryam	1-0	09:58	10.0	0-0	.000	0-0	.000	0-0	.000	0	2	2	2.0	1	0	0	0	0	0	0	0.0
Team												3	3									
Total		1	200		34-57	.596	9-19	.474	17-25	.680	5	33	38	38.0	21	0	19	11	6	6	94	94.0
Opponents		1	200		17-62	.274	7-34	.206	13-17	.765	12	19	31	31.0	26	1	6	17	3	3	54	54.0

Team Statistics

	SC	OPP
Scoring	94	54
Points per game	94.0	54.0
Scoring margin	+40.0	-
Field goals-att	34-57	17-62
Field goal pct	.596	.274
3 point fg-att	9-19	7-34
3-point FG pct	.474	.206
3-pt FG made per game	9.0	7.0
Free throws-att	17-25	13-17
Free throw pct	.680	.765
F-Throws made per game	17.0	13.0
Rebounds	38	31
Rebounds per game	38.0	31.0
Rebounding margin	+7.0	-
Assists	19	6
Assists per game	19.0	6.0
Turnovers	11	17
Turnovers per game	11.0	17.0
Turnover margin	+6.0	-
Assist/turnover ratio	1.7	0.4
Steals	6	3
Steals per game	6.0	3.0
Blocks	6	3
Blocks per game	6.0	3.0
Winning streak	1	-
Home win streak	1	-
Attendance	15601	0
Home games-Avg/Game	1-15601	0-0
Neutral site-Avg/Game	-	0-0

Team Results

Date	Opponent		Score	Att.
11/03/2025	Grand Canyon	W	94-54	15601