

SOUTH CAROLINA WOMEN'S BASKETBALL



3 NCAA CHAMPIONSHIPS • 7 NCAA FINAL FOURS • 9 SEC CHAMPIONSHIPS • 9 SEC TOURNAMENT TITLES • 26 ALL-AMERICANS

Assoc. AD Comms/PR: Diana Koval | Office: 803.777.7977 | Cell: 314.369.6050 | Email: dkoval@mailbox.sc.edu
Web: www.GamecocksOnline.com | X: @GamecockWBB | Instagram: @GamecockWBB | TikTok: @GamecockWBB | Facebook: @GamecockWBB

GAME 12 • DECEMBER 18, 2025 • TAMPA, FL • YUENGLING CENTER

#3/3 GAMECOCKS 10-1

Head Coach: Dawn Staley
Record at SC: 485-112 (18th)
Career Record: 657-192 (26th)
Top Scorer: Joyce Edwards (20.3)
Top Rebounder: Madina Okot (11.1)



Head Coach: Michele Woods-Baxter
Record at USF: 6-5 (1st)
Career Record: 57-56 (5th)
Top Scorer: Edyn Battle (14.2)
Top Rebounder: Lor Mputu (8.7)

USF 6-5

SCHEDULE/RESULTS

Oct. 24	Anderson (Exh.)	W, 112-31
Oct. 30	vs. #11/11 N. Carolina (Exh.)	W, 91-82
Nov. 3	Grand Canyon (SECN+)	W, 94-54
Nov. 7	Bowling Green (SECN+)	W, 114-47
Nov. 11	Clemson (ESPN2)	65-37

The Real SC (Los Angeles)
Nov. 15 vs. #8/10 Southern Cal (FOX) W, 69-52

Nov. 19	Winthrop (SECN)	W, 106-56
Nov. 23	Queens (SECN+)	W, 121-49

Players Era Championship (Las Vegas)
Nov. 26 vs. Duke W, 83-66
Nov. 27 vs. #4/4 Texas L, 64-66

ACC/SEC Challenge
Dec. 4 at #22/21 Louisville (ESPN) W, 79-77

Dec. 7	NC Central (SECN)	W, 106-42
Dec. 14	Penn State (ESPN)	W, 95-55
Dec. 18	at USF (ESPN2)	7 p.m.
Dec. 20	at Florida Gulf Coast (ESPN+)	2 p.m.
Dec. 28	Providence (SECN)	Noon
Jan. 1	Alabama* (SECN+)	2 p.m.
Jan. 4	at Florida* (SECN)	2 p.m.
Jan. 8	at Arkansas* (SECN+)	7:30 p.m.
Jan. 11	Georgia* (SECN)	2 p.m.
Jan. 15	Texas* (ESPN2)	7 p.m.
Jan. 18	at Coppin State (ESPN+)	Noon
Jan. 22	at Oklahoma* (ESPN)	7:30 p.m.
Jan. 25	Vanderbilt* (ESPN)	3 p.m.
Jan. 29	at Auburn* (SECN)	9 p.m.
Feb. 2	at Texas A&M* (ESPN2/U)	8 p.m.
Feb. 5	Mississippi State* (SECN)	6:30 p.m.
Feb. 8	Tennessee* (ABC)	3 p.m.
Feb. 14	at LSU* (ABC)	8:30 p.m.
Feb. 19	at Alabama* (SECN)	8:30 p.m.
Feb. 22	Ole Miss* (ESPN/2)	Noon
Feb. 26	Missouri* (SECN)	8 p.m.
Mar. 1	at Kentucky* (SECN+)	2 p.m.

Mar. 4-8 SEC Tournament (Greenville, SC)

* indicates SEC game
All times Eastern
TV outlet listed in parentheses (SECN is SEC Network; SECN+ is SEC Network online via the ESPN app.)

THE SERIES

SC Record/Staley Era: 2-0 / 2-0
H: 2-0 A: 0-0 N: 0-0
Current Streak: W2
Last Meeting: W, 78-62, 12/15/24 in Columbia

HOW TO FOLLOW

Watch: ESPN2 (Eric Frede, Debbie Antonelli)
Listen: 106.5 FM WTCB; Sirius 106 or 190 and on the SiriusXM app (Brad Muller)
Live Stats: StatBroadcast

GAMECOCK NOTABLES

- As the South Carolina defense continues to gel, the Gamecocks have yielded more than 69 points just once this season and have not allowed any opponent to reach 50.0 percent shooting with just two reaching 40.0 percent. The latter figure has South Carolina ranked sixth in the nation in field goal percentage defense at .256.
- On the other side of the ball, the Gamecocks have scored at least 90 points six times this season, including three 100-point games and shot at least 50.0 percent six times, highlighted by three games of at least 60.0 percent accuracy. South Carolina is eighth in the NCAA with a 90.5 scoring average and third in field goal percentage at .527.
- South Carolina has been outstanding in transition this season, averaging 26.0 fast break points per game to rank second in the nation. The Gamecocks have allowed just 7.2 fast break points per game.
- National Player of the Year candidate Joyce Edwards is 18th in the nation with 20.3 points per game this season. She has six 20-point games already this season – one more than her freshman year total – including 25 and a career-high 29 points in her last two outings. She became the first Gamecock to have back-to-back 25-point games since A'ja Wilson had 29 and 27 against Kentucky and LSU, respectively, in February 2018.
- Preseason All-American Ta'Niya Latson is growing more and more comfortable with her new more balanced role. Over the last three games, she is second on the team in both scoring (19.7 ppg) and assists (5.0 apg). Between the two, she has had her hands on 30.3 points per game, which is 32.5 percent of the team's total scoring in that stretch.
- Senior point guard Raven Johnson's basketball career is among the most successful in the country. Since her redshirt freshman season, she has led South Carolina to a 117-6 record, including a 36-4 mark against ranked opponents. This season the pass-first point guard has been showing off a career-best offensive efficiency of her own. Johnson is scoring 9.4 points per game on 50.0 percent shooting, including 40.7 percent from 3-point range.
- South Carolina's bench is coming alive in December as it benefits from more experience. The three primary reserves over the last three games – Ayla McDowell (7.7 ppg), Maddy McDaniel (5.7 ppg) and Maryam Dauda (4.5 ppg) – have combined for 16.7 points per game, shot 47.1 percent from 3-point range and averaged 8.7 rebounds in that stretch.

5

Over the last five games, all five South Carolina starters average at least 10.0 points and 3.2 rebounds.

+9.9

The Gamecocks are outscoring opponents in the first quarter by an average of 9.9 points.

130

South Carolina is third in the nation with 130 more free throw attempts than its opponents.

TALE OF THE TAPE

SOUTH CAROLINA	90.5	.527	.396	5.9	.711	15.9	54.6	+35.9	.318	.256	+12.2	19.6	+6.5	7.0	8.9
	Points	FG%	3FG%	3FGM per Game	FT%	FTM per Game	Scoring Def.	Scoring Margin	FG% Def.	3FG% Def.	Reb. Margin	Assist Avg.	TO Margin	Blocks Avg.	Steals Avg.
USF	69-9	.422	.288	4.6	.770	14.9	70.3	-0.4	.401	.319	+5.1	14.0	-1.5	3.0	4.6

TA'NIYA LATSON

5-8 • Sr. • G • Miami, FL

tuh-NYE-uh LAT-son

00



Last Gm: 18 pts, 6 rebs, 8 assts, 4 stls vs Penn State
Efficient scorer and distributor, growing defensively ... SEC top-15 in ppg, FG%, apg, FT%, A:TO ... 66 career 20-point games (4 SC) ... 3x All-American.

2025-26	Career*	Career Highs
PPG 17.8	22.0	Pt: 40 at Va. Tech, 1/2/25*
APG 3.7	3.9	Rb: 11 vs. TTU, 11/29/24**
FG% .519	.453	Ast: 12 at Va., 2/6/25*
3FG% .452	.337	Stl: 8 vs. Presby, 12/15/22*
FT% .836	.842	3FG: 5 vs. NCCU, 12/7/25**

MADDY McDANIEL

5-9 • So. • G • Upper Marlboro, Md.

1



Last Gm: 9 pts, 4 rebs, 2 assts vs Penn State
Court vision, can get to the rim, makes good decisions ... 14.7 mpg, 13.0 A:TO ... last two games – 8.5 ppg, 3.5 rpg, 2.5 apg, 22.5 mpg.

2025-26	Career	Career Highs
PPG 3.9	3.2	Pt: 10 vs Purdue, 11/30/24
RPG 1.4	0.9	Rb: 4 vs. PSU, 12/14/25*
APG 1.9	1.7	Ast: 6 vs. ECU, 11/17/24
FG% .389	.477	Stl: 4 vs. ECU, 11/17/24
FT% .667	.681	3FG: 2 vs PSU, 12/14/25*

TESSA JOHNSON

6-0 • Jr. • G • Albertville, MN

5



Last Gm: 15 pts, 6 rebs vs Penn State
Multi-level scoring threat, strong ... SEC top-5 in 3FG%, 3s/gm (2.2) ... vs ranked – 15.0 ppg 3.6 apg... 2024 NCAA Final Four All-Tournament Team.

2025-26	Career	Career Highs
PPG 13.3	8.2	Pt: 22 at Miss. St., 1/5/25
APG 2.7	1.5	Rb: 7 at UofL, 12/4/25*
FG% .495	.469	A: 6 vs. TN Tech, 3/21/25*
3FG% .458	.436	Stl: 3 vs. Ala., 2/22/24*
FT% .818	.840	3FG: 4 at UofL, 12/4/25*

JOYCE EDWARDS

6-3 • So. • F • Camden, SC

8



Last Gm: 29 pts, 5 assts, 4 blks, 6 stls vs Penn State
Size, speed, skill and feel for game ... SEC top-10 in ppg, bpg, FG% ... 6 20-pt gms this season ... 2025 All-Amer., 1st-Tm All-SEC ... 2025 FIBA AmeriCup gold.

2025-26	Career	Career Highs
PPG 20.3	14.3	Pt: 29 vs. PSU, 12/14/25
RPG 5.9	5.2	Rb: 12 at Vandy, 2/23/25
BPG 1.7	0.8	Blk: 4 vs. PSU, 12/14/25
FG% .586	.546	Ast: 6 vs. NCCU, 12/7/25*
FT% .617	.729	Stl: 6 vs. PSU, 12/14/25

MADINA OKOT

6-6 • Sr. • C • Mumias, Kenya

mah-DEE-nuh oh-CAUGHT

11



Last Gm: 10 pts, 9 rebs, 11 mins vs. NCCU
Size and strength inside, shooting range ... leads NCAA with 7 dbl-dbls ... NCAA top-20 in rpg, FG% ... vs ranked – 13.7 ppg, .563 FG%, 13.0 rpg.

2025-26	Career*	Career Highs
PPG 14.8	12.1	P: 26 at UMES, 12/20/24*
RPG 11.1	9.9	R: 23 at Vandy, 2/13/25*
BPG 1.7	1.3	B: 4 vs. BGSU, 11/7/25**
FG% .610	.638	A: 3 v. Wnthrop, 11/19/25**
FT% .690	.644	S: 5 vs Ala. St., 11/13/24*

ADHEL TAC

6-5 • So. • F • Grand Prairie, TX

uh-DELL TACK

15



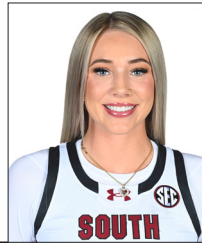
Last Gm: 2 pts, 3 rebs, 1 stl vs Penn State
High motor, great teammate ... growing strength and confidence after long injury recovery to start college ... has two starts this season.

2025-26	Career	Career Highs
PPG 3.1	2.0	P: 11 v. Queens, 11/23/25
RPG 3.8	2.3	R: 10 v. Queens, 11/23/25
BPG 0.7	0.3	B: 2 vs. Texas, 11/27/25
FG% .556	.469	A: 2 vs. BGSU, 11/7/25
FT% .579	.600	S: 1 vs PSU, 12/14/25*

CHLOE KITTS

6-2 • Sr. • F • Oviedo, FL

21



2025-26: Out for season, October ACL surgery
Tenacious; improved physical, mental strength ... in 2025 SEC Tourn and NCAA Regional MVP, All-American, team's top rebounder.

2024-25	Career	Career Highs
PPG 10.2	8.1	Pt: 25 vs Vandy, 3/7/25
RPG 7.7	5.8	Rb: 14 vs Mich., 11/4/24*
APG 1.9	1.5	Blk: 5 vs Mizzou, 2/8/24
FG% .520	.523	Ast: 10 at Miss., 2/27/25
FT% .798	.734	Stl: 4 at Miss., 2/27/25

AYLA McDOWELL

6-1 • Fr. • G • Cypress, TX

EYE-luh

24



Last Gm: 4 pts, 4 rebs (3 off.) vs Penn State
3-level scorer, great size, athleticism ... last 3 gms – 7.7 ppg, 50.0 FG%, 60.0 3FG% ... McDonald's All-American, #15 in 2025 Class ... Brazil National Team.

2025-26	Career	Career Highs
PPG 5.2	5.2	Pt: 11 vs. BGSU, 11/7/25
APG 0.4	0.4	Rb: 4 vs. PSU, 12/14/25*
FG% .462	.462	Ast: 1 at UofL, 12/4/25*
3FG% .429	.429	Stl: 2 vs. BGSU, 11/7/25
FT% .800	.800	3FG: 2 vs. BGSU, 11/7/25

RAVEN JOHNSON

5-9 • Sr • G • Atlanta, GA

25



Last Gm: 15 pts, 7 rebs, 4 assts, 3 stls vs Penn State
Great instincts, good decision-maker ... 13th NCAA in apg (5th SEC), 6th in A:TO (3.9, 3rd SEC) ... 2 dbl-dbls ... 2024 All-SEC, 2025 SEC All-Defensive.

2025-26	Career	Career Highs
PPG 9.4	5.9	Pt: 18 v. SDSU, 11/20/23
RPG 4.5	4.1	Rb: 15 at Tenn., 2/15/24
APG 6.4	3.8	A: 17 v. Clems., 11/16/23
FG% .500	.404	Stl: 6 vs Auburn, 2/2/25
FT% .824	.667	B: 2 v. Queens, 11/23/25*

MARYAM DAUDA

6-4 • Sr. • F • Bentonville, Ark.

MARE-ee-um DOW-duh

30



Last Gm: 3 pts, 3 rebs, 1 stl vs Penn State
Keeps defenders off balance, great footwork inside ... growing confidence ... 5 games 5+ rebounds ... 13.1 mpg ... played in 34 games last season.

2025-26	Career*	Career Highs
PPG 3.1	5.0	Pt: 22 at Tulsa, 3/21/24*
RPG 4.2	3.7	Rb: 13 v. Miss St, 1/11/24*
FG% .407	.427	Blk: 10 at Ala., 1/14/24*
3FG% .000	.283	Ast: 5 at Ala., 1/14/24
FT% .563	.733	Stl: 4 v. UGa, 1/7/24*

AGOT MAKEER

6-0 • Fr. • G • Thunder Bay, Ontario

uh-GOT muh-KEER

44



Last Gm: 2 rebs, 3 mins vs. Texas
Size, speed, versatility ... USWBA Freshman of the Year watch list ... McDonald's All-American, No 6 in 2025 Class ... Team Canada U17, U19.

2025-26	Career	Career Highs
PPG 5.9	5.9	P: 12 v. Wnthrop, 11/19/25*
APG 1.1	1.1	R: 7 v. Wnthrop, 11/19/25
FG% .439	.439	A: 4 v. Wnthrop, 11/19/25
3FG% .250	.250	S: 2 v. Wnthrop, 11/19/25
FT% .778	.778	B: 3 vs. GCU, 11/3/25

DAWN STALEY

At SC: 485-111 (18th season)

Career: 657-191 (26th season)

HC



- 3 National Championships, including 10th undefeated title season in NCAA history (2024)
- 7 Final Fours in last 10 NCAA Tournaments
- 9 SEC Regular-Season Championships
- 9 SEC Tournament Championships
- 9th in winning percentage (.775) among active NCAA Div. I coaches, 10th all-time
- 12 WNBA Draft picks since 2020 – more than any other program in that time

* indicates includes games at previous NCAA Div. I institution

* indicates has happened multiple times, most recent listed

QUICK FACTS

The University

Location: Columbia, S.C.

Founded: 1801

Enrollment: 40,000

Colors: Garnet (PMS 202C) and Black

Nickname: Gamecocks

Conference: Southeastern

University President: Michael Amiridis

Athletics Director: Jeremiah Donati

Facility: Colonial Life Arena (18,000)

Coaching Staff

Head Coach: Dawn Staley

Alma Mater: Virginia, 1992

Overall Record: 657-191 (26th season)

School Record: 485-111 (18th season)

Assoc. Head Coach, Alma Mater:

Lisa Boyer, Ithaca, 1979 (18th season)

Assistant Coaches, Alma Mater:

Jollette Law, Iowa, 1990 (9th season)

Wendale Farrow, E. Michigan, 2009 (1st season)

Mary Wooley, USC Aiken, 2002 (3rd season)

Khadijah Sessions, South Carolina, 2016 (3rd season)

Team Information

2024-25 Record: 35-4

Home: 16-1 Away: 8-2 Neutral: 11-1

SEC Record (Finish): 15-1 (T-1st)

Home: 8-0 Away: 7-1

Letterwinners Returning/Lost: 2/3

Starters Returning/Lost: 7/6

Program History

First Year of Women's Basketball: 1974-75

All-Time Record: 1,065-540 (52nd season)

All-Time SEC Record: 278-213 (35th season)

NCAA Appearances (Last): 21 (2025)

NCAA Tournament Record: 55-18

2025 NCAA Result: Runner-Up

WNIT Appearances (Last): 5 (2011)

WNIT Record: 6-4

Media Relations

Women's Basketball Contact: Diana Koval

Office: 803.777.7977

Cell: 314.369.6050

Email: dkoval@mailbox.sc.edu

Women's Basketball on Social Media:

Twitter: @GamecockWBB

Instagram: @GamecockWBB

Facebook: @GamecockWBB

TikTok: @GamecockWBB

Head Coach on Social Media

Twitter: @DawnStaley

Instagram: @Staley05

Athletics Department on the Web

Website: GamecocksOnline.com

Twitter: @GamecocksOnline

Instagram: @GamecocksOnline

Facebook: Facebook.com/GamecocksOnline

YouTube: YouTube.com/GamecocksOnline

Perennial Power

Under Dawn Staley, South Carolina women's basketball had been a perennial national power since winning its first SEC title in 2013-14. A few highlights from that stretch.

- 5 straight NCAA Final Four appearances (2021-2025) is the longest active streak and the second-longest streak in tournament history.
- 3 National Championships are third most by a single program in tournament history.
- 10th undefeated National Championship season in NCAA history (2023-24)
- 84 AP No. 1 rankings are third-most by a program in the poll's history.
- 124 straight AP Top-10 rankings is the longest active streak – more than three times the next program
- 11 Gamecocks have earned All-America status at least once in their careers

The USF Series

The Gamecocks are 2-0 all-time against the Bulls with both games played in Columbia in the last four seasons.

Then-No. 3 South Carolina defeated USF 78-62 on Dec. 15, 2024, behind dominant first and third quarters and 51.7 percent shooting for the game. Joyce Edwards led the Gamecocks with 15 points and Raven Johnson handed out six assists.

The two teams first met on Mar. 19, 2023, in the second round of the NCAA Tournament with South Carolina posting a 76-45 victory en route to its third-straight NCAA Final Four.

Road Ready

The Gamecocks are 319-263 (.548) all-time in road games (some records prior to 1976-77 did not include location of games), including a 145-48 mark (.751) under head coach Dawn Staley, giving her the best road winning percentage in program history.

Ranked Readings

Against ranked teams, South Carolina is 134-72 (.650) in the Dawn Staley era (beginning 2008-09), and even that mark is skewed by the early seasons of her tenure. Since the start of the 2014-15 campaign, the Gamecocks are 119-33 (.783) against ranked teams, including a 49-6 (.891) mark since the start of the 2021-22 season.

This season, South Carolina is 2-1 against ranked opponents with all three games happening outside of

2025-26 AWARDS

Maryam Dauda

Cheryl Miller Preseason Top 20 Watch List

Joyce Edwards

SEC Player of the Week (11/11-17)

Preseason USA Today Second-Team All-America

USBWA Ann Meyers Drysdale Award Watch List

Wooden Award Preseason Top 50 Watchlist

Naismith Trophy Watch List (preseason)

Wade Trophy Watch List (preseason)

Preseason All-SEC First Team (media, coaches)

Katrina McClain Preseason Top 20 Watch List

Raven Johnson

USBWA Ann Meyers Drysdale Award Watch List

Wooden Award Preseason Top 50 Watchlist

Naismith Trophy Watch List (preseason)

Nancy Lieberman Preseason Top 20 Watch List

Chloe Kitts

Wooden Award Preseason Top 50 Watchlist

Ta'Niya Latson

USBWA Player of the Week (11/17-23)

Preseason AP All-America

Preseason USA Today First-Team All-America

Wooden Award Preseason Top 50 Watchlist

USBWA Ann Meyers Drysdale Award Watch List

Naismith Trophy Watch List (preseason)

Wade Trophy Watch List (preseason)

Preseason All-SEC First Team (coaches)

Preseason All-SEC Second Team (media)

Ann Meyers Drysdale Preseason Top 20 Watch List

Agot Makeer

Wooden Award Preseason Top 50 Watchlist

Tamika Catchings Watch List

Madina Okot

Lisa Leslie Preseason Top 20 Watch List

USBWA Player of the Week (12/1-7)

SEC Player of the Week (12/2-8)

GAMECOCKS IN THE RANKINGS (thru games of 12/15)

Team	SEC	NCAA	Actual	Joyce Edwards	SEC	NCAA	Actual
Scoring Offense	4	8	90.5	Points per game	3	18	20.3
Scoring Defense	6	27	54.6	FG percentage	6	26	.586
Scoring Margin	3	7	+35.9	Blocks per game	6	47	1.7
Field Goal Percentage	2	3	.527				
Field Goal %age Def.	3	6	.318	Raven Johnson	SEC	NCAA	Actual
3-Point FG %age	2	8	.396	Assists per game	5	13	6.4
3-Point FG %age Def.	2	36	.256	Assist-to-turnover ratio	3	6	3.9
3-Point FG Made/Gm.	12	199	5.9				
Free Throw Percentage	11	147	.711	Tessa Johnson	SEC	NCAA	Actual
Free Throws Made/Gm.	6	32	15.9	3-Point FG percentage	3	28	.458
Rebounding Average	5	17	44.5	3-Point FGs made/game	9	134	2.2
Rebounding Margin	5	15	+12.2				
Offensive Rebound Avg.	12	80	13.8	Ta'Niya Latson	SEC	NCAA	Actual
Assists Per Game	5	14	19.6	Points per game	10	56	17.8
Steals Per Game	12	153	8.9	FT percentage	7	97	.836
Turnover Margin	7	35	+6.5	Assist-to-turnover ratio	10	57	2.3
Turnovers Per Game	4	14	11.6				
Assist-to-Turnover Ratio	3	8	1.7	Madina Okot	SEC	NCAA	Actual
Blocked Shots Per Game	2	5	7.0	Rebounds per game	1	9	11.1
Bench Points Per Game	15	250	17.2	FG percentage	4	14	.610
Home Attendance Avg.	1	1	15,880	Blocks per game	7	54	1.7
				Off. rebs. per game	3	—	3.7
				Double-doubles	2	2	7

CURRENT STREAKS

	Total	Home	Road	Neut.
Overall	W3	W11	W3	L1
SEC	W6	W48	W3	—
Non-Conference	W10	W10	L1	W2
Ranked Teams	W1	W1	W1	L1

Columbia – W 69-52 vs. #8/10 Southern Cal (Nov. 15), L 64-66 vs. #4/4 Texas (Nov. 27), W 79-77 at #22/21 Louisville (Dec. 4).

Schedule Sketch

South Carolina's schedule continues to challenge and prepare the team for the postseason. This year's slate features 12 games against teams ranked in the current top 25 – five home, five road and two neutral sites. Four of the 10 games are against teams in the top 10.

The non-conference schedule is highlighted by three ranked matchups – vs. #8/10 Southern Cal (W, 69-52), vs. #4/4 Texas (L, 64-66) and at #22/21 Louisville (W, 79-77).

In the NET rankings released on Dec. 9, South Carolina is ranked sixth and has 12 Quad 1 games on the schedule, including three non-conference matchups. The Gamecocks are second in the SEC in the NET rankings but have the best average opponent NET ranking.

Ranking Review

South Carolina is currently ranked No. 3 in both the AP Poll and the USA Today/WBCA Coaches' Poll.

It marks the Gamecocks' 124th consecutive entry in the AP top 10, beginning with the 2019-20 preseason poll. It is the longest active streak and the eighth longest in the history of that poll (7th is 137, Baylor). Their 255 straight appearances in the AP Poll, dating back to Dec. 10, 2012, mark the second-longest active streak in the nation and is the tied for the sixth longest all-time (5th, Duke/Stanford, 312).

In the USA Today/WBCA Coaches' Poll, South Carolina has been in the top 10 since claiming the No. 10 spot in the 2019-20 preseason poll.

Staley's Standard

In her 26th season as a head coach, Dawn Staley has a .775 (657-191) winning percentage, which ranks ninth in the nation among active head coaches and 10th all-time. With three national championships, she ranks fourth among head coaches all-time in NCAA titles.

Staley is one of just two women's basketball coaches to lead their teams to multiple 40-game win streaks

in NCAA history with the Gamecocks' program-record 43-game streak (2023-24) ranking seventh longest in NCAA history. She is one of just 11 men's or women's basketball coaches to win at least three NCAA National Championships and the first Black head coach to win multiple titles. She is one of seven coaches to lead a team to at least four NCAA National Championship games.

Now in her 18th season with the Gamecocks, Staley is the program's all-time winningest coach (485) with a program-record 14 postseason appearances. She accounts for all seven of the Gamecocks' Final Four appearances and the only NCAA National Championships in program history. Her leadership on the court and in the community resulted in the City of Columbia commissioning a statue of Staley, which stands a short distance from the Gamecocks' home Colonial Life Arena.

Staley's nine SEC regular-season championships trail only Pat Summitt's 16 in league history, and her seven SEC Coach of the Year awards trail Summitt's league record by just one. Staley's 214 SEC regular-season wins are the most among active league coaches and third all-time – behind just Summitt (Tennessee, 306) and Andy Landers (Georgia, 273). She was the second-fastest to the 200-win mark in league history with her 255 games trailing Summitt's mark of 229. Staley's .793 SEC winning percentage (214-56) is second only to Summitt (.874) among coaches in the league at least five seasons. She owns the SEC record for consecutive regular-season conference victories with a 57-game streak that began in the 2021-22 season and ended in 2024-25.

Efficiency Report

A focus for South Carolina on both sides of the ball is efficiency – creating its own and disrupting its opponents'. This season, they are among the best in the nation in both categories – ranking third in the NCAA in field goal percentage (.527) and sixth in field goal percentage defense (.319).

Individually, three Gamecock starters are among the SEC's top 15 in field goal percentage – Madina Okot (4th, .610), Joyce Edwards (6th, .586) and Ta'Niya Latson (14th, .519). In all, five Gamecocks are shooting at least 50.0 percent from the field.

From 3-point range, the Gamecocks are eighth in the nation with a .396 shooting percentage. Tessa Johnson is among the nation's most accurate outside shooters with her 45.8 percent accuracy ranking 28th in the nation (3rd in SEC). Her 2.2 made 3s per game are ninth in the SEC.

Paint Production

South Carolina has long controlled the paint, and this season is no different, even with a guard-dominated roster.

With 55.8 percent of the Gamecocks' points coming in the paint, the Gamecocks are second in the nation with 50.5 paint points per game and are out-scoring opponents in that space by an average of 28.5 points, including a +10.7 edge against ranked opponents. They are shooting 63.8 percent in the paint compared to opponents' 40.9 percent accuracy.

Glass Shattering

South Carolina is 15th in the nation in rebounding margin (+12.2) and 17th in rebounding average (44.5). They have corralled 42.6 percent of their missed shots for an offensive rebounding percentage that ranks eighth.

Senior Madina Okot is ninth in the nation with an SEC-best 11.1 rebounds per game, and her 3.7 offensive rebounds per game are third in the SEC. She has been in double figures in the rebounds in eight games.

NATIONAL RANKINGS

Associated Press Poll (Dec. 15)

1. UConn	10-0
2. Texas	12-0
3. South Carolina	10-1
4. UCLA	9-1
5. LSU	11-0
6. Michigan	9-1
7. Maryland	12-0
8. Oklahoma	11-1
9. TCU	11-0
10. Iowa State	12-0
11. Iowa	10-1
12. Kentucky	11-1
13. Vanderbilt	9-0
14. Ole Miss	10-1
15. Baylor	10-2
16. Louisville	10-3
17. Tennessee	7-2
18. North Carolina	9-3
19. Southern Cal	7-3
20. Notre Dame	8-2
21. Ohio State	9-1
22. Washington	9-1
23. Nebraska	11-0
24. Michigan State	9-1
25. Princeton	10-1

USA Today/WBCA Coaches' Poll (Dec. 16)

1. UConn	10-0
2. Texas	12-0
3. South Carolina	10-1
4. UCLA	9-1
5. LSU	11-0
6. Maryland	12-0
7. TCU	11-0
8. Oklahoma	11-1
9. Michigan	9-1
10. Iowa State	12-0
11. Vanderbilt	9-0
12. Iowa	10-1
13. Kentucky	11-1
14. Ole Miss	10-1
15. Baylor	10-2
16. North Carolina	9-3
17. Louisville	10-3
18. Tennessee	7-2
19. Southern Cal	7-3
20. Notre Dame	8-2
21. Ohio State	9-1
22. Washington	9-1
23. Michigan State	9-1
24. Alabama	11-0
23. Nebraska	11-0

Sophomore Joyce Edwards is next in line at 5.9 rebounds per game, and senior guard Raven Johnson's 4.5 per game, including a season-high 11 against #8/10 Southern Cal (Nov. 15), leads the guards. She has led the team in rebounding twice this season and 12 times in her career.

Block Party

The Gamecocks have been a premier shot blocking program since their first national championship in 2017. They ranked in the top 15 in blocks per game that season and have only climbed higher in the eight subsequent seasons, including four years leading the nation in the stat

THE STALEY ERA

Wins

30-Win Seasons	8
25-Win Seasons	13
20-Win Seasons	14
Winning Seasons	15

National Rankings

Weeks in the AP Top 25	260
Weeks in the AP Top 10	215
Weeks in the AP Top 3	140
Weeks at AP No. 1	84

Postseason

NCAA Tournament Appearances	13
NCAA Sweet 16s	12
NCAA Final Fours	7
National Championships	3

In the SEC

Regular-Season Championships	9
Regular-Season Top 3 Finishes	13
Tournament Championships	9

GAMECOCKS IN 2025-26 NATIONAL POLLS

Poll	Pre	11/10	11/17	11/24	12/1	12/8	12/15	12/22	12/29	1/5	1/12	1/19	1/26	2/2	2/9	2/16	2/23	3/2	3/9	3/16
Associated Press	2	2	2	2	3	3	3													
Coaches	2	2	2	2	3	3	3													

and twice coming in second. Beyond the number of blocks, their block percentage has led the nation three seasons.

This season, South Carolina is fifth in the nation with 7.0 blocks per game, including 4.3 against ranked opponents. The Gamecocks have blocked 16.6 percent of opponents' 2-point attempts, which ranks fifth in the nation, according to Her Hoop Stats.

Joyce Edwards tops the individual list with 1.73 blocks per game to rank sixth in the SEC. Madina Okot is just behind at 1.70 per game (7th SEC). Gamecock guards have added 2.4 blocks per game to the team's average.

Quarter Breakdown

South Carolina has been starting strong this season with a +9.9 scoring margin in the first quarter and finishing well with a +9.5 margin in the fourth. The offense has been most efficient in the first period as well when the Gamecocks are shooting 55.4 percent. Opponents have been least efficient in the fourth quarter, shooting just 25.6 percent in the final 10 minutes.

Here's a more detailed look at the quarter-by-quarter production for the Gamecocks this season:

Qtr.	SC-Opp		SC-Opp	
	Avg. Pts	Avg. Reb	Avg. Pts	Avg. Reb
1	24.1-14.2	+9.9	10.1-8.2	+1.9
2	22.0-13.8	+8.2	12.9-8.4	+4.5
3	23.1-14.8	+8.3	10.9-7.4	+3.5
4	21.4-11.8	+9.5	10.5-8.4	+2.2

Individually, four Gamecocks have scored double digits in a single quarter a combined nine times – Joyce Edwards (4), Tessa Johnson (2), Ta’Niya Latson (2), Madina Okot (1). The top single-quarter individual scoring this season is 13

points by Latson in the third and fourth quarters against NC Central (Dec. 4).

First Watch

Gamecocks have dominated the many national award watch lists that are announced each preseason.

South Carolina is one of three schools with a player on each of the Naismith Hall of Fame Women's Starting Five watch lists. And one of two programs with five entries on the Wooden Award Top 50 Preseason Watchlist.

Three Gamecocks – Joyce Edwards, Raven Johnson, Ta’Niya Latson – are on the watch lists for the Naismith Trophy, the Wooden Award and the USBWA's Ann Meyers Drysdale Player of the Year award. South Carolina is one of two schools with three players on all three lists.

Edwards and Latson are also among the 20 players on the Wade Trophy Watch List, which is the WBCA's national player of the year award.

Latson drew preseason All-America honors from both the Associated Press and USA Today. Edward earned a spot on the USA Today Preseason All-America Second Team.

The pair was also ranked on ESPN's list of the top 25 players in the NCAA this season. Latson came in at #7 with Edwards close behind at #11, making South Carolina one of two programs with multiple players in the first 11 places.

Agot Makeer is on the list for the Tamika Catchings Award, the USBWA's National Freshman of the Year. and on the Wooden Award watch list, which also recognized senior Chloe Kitts despite her season-ending injury.

DOUBLE-DOUBLES

Joyce Edwards (2)		
11/15	vs. #8/10 Southern Cal	17 pts/10 rebs
12/7	NC Central	25 pts/10 rebs

Raven Johnson (2)		
11/7	Bowling Green	11 pts/11 assts
11/15	vs. #8/10 Southern Cal	14 pts/11 rebs

Madina Okot (7)		
11/7	Bowling Green	13 pts/11 rebs
11/11	Clemson	12 pts/12 rebs
11/19	Winthrop	23 pts/11 rebs
11/23	Queens	14 pts/12 rebs
11/26	vs. Duke	23 pts/13 rebs
11/27	vs. #4/4 Texas	12 pts/11 rebs
12/4	at #22/21 Louisville	23 pts/13 rebs

Adhel Tac (1)		
11/23	Queens	11 pts/10 rebs

That's So Raven

Senior point guard Raven Johnson has been at the tip of the spear for the Gamecocks on both sides of the ball and has led the team to nothing but winning.

In Johnson's fourth full season, South Carolina is 117-6 with her in the lineup (missed one game each in the 2022-23 and 2023-24 seasons), including a 36-4 mark against ranked teams. That stretch features three trips to the Final Four, including a National Championship (2024) and runner-up finish (2025), three SEC Regular-Season titles and three SEC Tournament championships in the

GAMES LED TEAM IN...

Scoring	2025-26	Career	Record	Rebounding	2025-26	Career	Record	Assists	2025-26	Career	Record
Joyce Edwards	6	22	19-3	Madina Okot	8	32*	22-10*	Raven Johnson	7	60	58-2
Ta’Niya Latson	4	72*	52-20	Raven Johnson	2	12	11-1	Ta’Niya Latson	2	51*	34-17*
Madina Okot	2	10*	9-1*	Joyce Edwards	1	7	6-1	Tessa Johnson	2	7	7-0
Chloe Kitts	0	10	10-0	Chloe Kitts	0	28	26-2	Joyce Edwards	2	3	3-0
Tessa Johnson	0	5	5-0	Ta’Niya Latson	0	6*	5-1*	Chloe Kitts	0	8	8-0
Maryam Dauda	0	5*	1-4	Maryam Dauda	0	5*	2-3	Maddy McDaniel	0	5	4-1

* indicates includes games at previous NCAA Div. I program

MISCELLANEOUS STATS

Triple-Double	2025-26	Career	Record	10+ Points	2025-26	Career	Record	10+ Assists	2025-26	Career	Record
Chloe Kitts	0	1	1-0	Joyce Edwards	11	38	35-3	Raven Johnson	2	3	3-0
Ta’Niya Latson	0	1*	1-0*	Ta’Niya Latson	10	96*	69-27*	Ta’Niya Latson	0	4*	4-0*
Double-Doubles	2025-26	Career	Record	Madina Okot	9	31*	26-5*	Chloe Kitts	0	1	1-0
Madina Okot	7	19*	16-3*	Tessa Johnson	8	33	32-1	5+ Assists	2025-26	Career	Record
Joyce Edwards	2	6	6-0	Raven Johnson	7	29	28-1	Raven Johnson	7	44	43-1
Raven Johnson	2	3	3-0	Agot Makeer	2	2	2-0	Ta’Niya Latson	3	38*	30-8*
Adhel Tac	1	1	1-0	Ayla McDowell	2	2	2-0	Joyce Edwards	3	4	4-0
Chloe Kitts	0	17	17-0	Adhel Tac	1	1	1-0	Tessa Johnson	1	6	6-0
Ta’Niya Latson	0	5*	5-0*	Chloe Kitts	0	43	43-0	Chloe Kitts	0	5	5-0
Maryam Dauda	0	2*	1-1	Maryam Dauda	0	22*	12-10	Maddy McDaniel	0	2	2-0
40+ Points	2025-26	Career	Record	Maddy McDaniel	0	1	1-0	5+ Blocks	2025-26	Career	Record
Ta’Niya Latson	0	1*	1-0*	20+ Rebounds	2025-26	Career	Record	Maryam Dauda	0	1*	1-0
Madina Okot	0	1*	1-0*	Madina Okot	0	1*	1-0*	5+ Steals	2025-26	Career	Record
30+ Points	2025-26	Career	Record	10+ Rebounds	2025-26	Career	Record	Raven Johnson	1	7	7-0
Ta’Niya Latson	1	21*	18-3*	Madina Okot	8	25*	19-6*	Joyce Edwards	1	1	1-0
20+ Points	2025-26	Career	Record	Joyce Edwards	2	6	6-0				
Joyce Edwards	6	11	11-0	Raven Johnson	1	4	4-0				
Ta’Niya Latson	4	66*	51-15*	Adhel Tac	1	1	1-0				
Madina Okot	3	5*	5-0*	Chloe Kitts	0	21	21-0				
Tessa Johnson	1	2	2-0	Maryam Dauda	0	5*	4-1				
Chloe Kitts	0	4	4-0	Ta’Niya Latson	0	3*	3-0*				
Maryam Dauda	0	1*	0-1								

* indicates includes games at previous NCAA Div. I program

three full seasons of her career.

Johnson is seventh in program history in career assists (480 – 6th is Lisa Diaz, 498) and fifth in the category for SEC play (166). She owns three of the top seven single-season assist-to-turnover ratios in program history, including a program-record 3.33 mark in SEC play in 2024-25. Her current career 2.86 A:TO (480:168) is well ahead of the current program record of 2.55 by WNBA veteran Tyasha Harris (2017-20).

The powerful guard makes her presence felt on the glass as well, averaging 4.1 rebounds for her career, and she has been the team's top rebounder in 12 games, including two games this season (Grand Canyon, Penn State).

This season, Johnson is 13th in the nation and fifth in the SEC in assists per game (6.4), including a pair of double-digit assist games. She is sixth in the nation and third in the SEC with a 3.9 assist-to-turnover ratio. Her stat stuffing includes 9.4 points, 4.5 rebounds and 1.8 steals per game. She is shooting 50.0 percent from the field, including 40.7 percent from 3-point range – both career-best numbers. Against ranked opponents, her numbers rise to 10.7 points per game on 52.0 percent shooting, 60.0 percent from 3-point range, and 5.0 rebounds per game.

Johnson has a pair of double-doubles this season in two different ways – 11 points, 11 assists vs. Bowling Green; 14 points, 11 rebounds vs. #8/10 Southern Cal.

Let Us Re-Joyce

Sophomore forward Joyce Edwards announced her presence on the college stage last season as the Gamecocks' top scorer (12.7 ppg) with a team-high 16 games leading the team in points and five 20-point outings.

The production made her just the third freshman in program history to earn First-Team All-SEC honors, and she was an All-America honorable mention selection. This season, she is on the watch lists for every national player of the year award and the Katrina McClain Power Forward of the Year list as well.

Edwards is living up to the predictions as her team-high 20.3 points per game rank third in the SEC (18th in the nation), including a team-best six 20-point outings, which surpasses her freshman-year total. Her scoring has come on 58.6 percent field goal shooting, which is sixth in the league and 26th in the nation. Her 91.7 percent (11-of-12) accuracy against Bowling Green (Nov. 7) was the fourth-best shooting performance in Gamecock history and the best since Aliyah Boston's perfect 13-of-13 outing in Nov. 2021.

She is stuffing the box score beyond scoring, averaging 3.1 assists per game, including three outings of at least five, and upping her rebounding to 5.9 per game.

Edwards was named SEC Player of the Week (11/11-17) in the season's second week after leading the Gamecocks to a pair of wins, including her double-double in a win over #8/10 Southern Cal (Nov. 15).

Edwards' success this season comes after a summer of representing the United States in both 3x3 and 5-on-5 competitions. After claiming a title at the FIBA 3x3 Nations League Americas Conference 2 event, she went on to average 9.9 points at the FIBA AmeriCup to rank among the top 15 scorers in the tournament and help the Americans to a gold medal.

It's T-Time

Junior guard Tessa Johnson is shaking off her "Tournament Tessa" moniker to bring "Trusted Tessa" out every time she steps on the court and on both sides of the ball while adapting to a starting role this season.

After an offseason focused on her physical conditioning and how nutrition multiplies that effort, Johnson is logging a team-high 31.4 minutes per game (13th in SEC) and seeing her scoring and efficiency rise to career-best levels.

Johnson's 13.3 points per game are fourth on the team, and she is tied for the team lead with 15.0 points per game against ranked opponents. Her .458 3-point percentage ranks third in the league as part of her overall 49.5 percent accuracy. Her 2.2 made 3s per game are ninth in the SEC. She is also handing out a career-best 2.7 assists per game.

Johnson have built steadily year over year, beginning with a freshman year that saw her shine in the most crucial moments of the team's undefeated run to the 2024 National Championship. She averaged 14.0 points on 58.8 percent shooting in the final weekend of the season, including a team-best 19 points in the title game to earn a spot on the NCAA Final Four All-Tournament Team.

Changes in Lat-itude

The top scorer in the nation last season, senior guard Ta'Niya Latson decided to join South Carolina for her final college season because she knew head coach Dawn Staley and the Gamecocks had what she needed to challenge herself to expand areas of her game she was not able to hone at Florida State. Without the pressure of being the sole focal point on offense, Latson's efficiency is skyrocketing and her defensive skills are steadily expanding.

Named an AP Preseason All-American and to the watch lists of every national player of the year award, Latson improved her strength in the offseason, which has helped her make strides defensively, and she is seeing the court better on offense.

TEAM SPECIALTY STATS

		Pts. in Paint	Pts. Off TOs	2nd Chance Pts	Fast Break Pts
11/3	GCU	40-18	22-10	14-15	32-2
11/7	BGSU	66-18	21-13	20-4	37-2
11/11	Clem.	36-18	11-13	16-2	7-3
11/15	vs SoCal	44-28	16-9	15-7	11-9
11/19	Winthrop	70-20	26-8	27-17	33-7
11/23	Queens	66-12	22-12	11-13	56-13
11/26	vs Duke	58-28	18-13	14-6	24-8
11/27	vs. TX	38-28	18-18	8-12	7-8
12/4	at UL	36-30	11-13	6-10	0-6
12/7	NCCU	42-18	42-9	20-2	38-12
12/14	PSU	60-24	33-5	17-21	41-9
12/18	at USF				
12/20	at FGCU				
12/28	Prov.				
1/1	Ala.				
1/4	at FL				
1/8	at Ark.				
1/11	GA				
1/15	TX				
1/18	at CSU				
1/22	at OK				
1/25	Vandy				
1/29	at Aub.				
2/2	at TAM				
2/5	M State				
2/8	TN				
2/14	at LSU				
2/19	at AL				
2/22	OM				
2/26	MO				
3/1	at KY				
Season Avg.		50.5-22.0	21.8-11.2	15.3-9.9	26.0-7.2
SEC Avg.					

STARTERS VS. BENCH

		SC Starters	Opp. Starters	SC Bench	Opp. Bench
11/3	GCU	75	34	19	20
11/7	BGSU	79	25	35	22
11/11	Clem.	57	28	8	9
11/15	vs SoCal	63	38	6	14
11/19	Winthrop	81	48	25	8
11/23	Queens	88	31	33	18
11/26	vs Duke	72	44	11	22
11/27	vs. TX	62	49	2	17
12/4	at UL	75	43	4	34
12/7	NCCU	76	34	30	8
12/14	PSU	79	50	16	5
12/18	at USF				
12/20	at FGCU				
12/28	Prov.				
1/1	Ala.				
1/4	at FL				
1/8	at Ark.				
1/11	GA				
1/15	TX				
1/18	at CSU				
1/22	at OK				
1/25	Vandy				
1/29	at Aub.				
2/2	at TAM				
2/5	M State				
2/8	TN				
2/14	at LSU				
2/19	at AL				
2/22	OM				
2/26	MO				
3/1	at KY				
Season Avg.		73.4	38.5	17.2	16.1
SEC Avg.					

2025-26 SCORING DIFFERENTIALS

All Games

Largest lead in a win.....	by 74 (119-45), 4th-1:12, vs. Queens, 11/23
Largest deficit overcome to win.....	by 5 (68-73), 4th-4:23, at #22/21 Louisville, 12/4
Largest deficit in a loss.....	by 8 (19-27), 2nd-6:57, vs. #4/4 Texas, 11/27
Best Scoring Run.....	30 points, 3rd-2:13, vs. Queens, 12/7
Best Scoring Run Against.....	9 points, 3rd-5:18, vs. Duke, 11/26
Most Lead Changes.....	13 at #22/21 Louisville, 12/4
Most Times Tied.....	8 vs. #4/4 Texas, 11/27
Most minutes trailed.....	27:18 vs. #4/4 Texas, 11/27

vs. Ranked Opponents

Largest lead in a win.....	by 17 (69-52), 4th-0:30, vs. #8/10 Southern Cal, 11/15
Largest deficit overcome to win.....	by 5 (68-73), 4th-4:23, at #22/21 Louisville, 12/4
Largest deficit in a loss.....	by 8 (19-27), 2nd-6:57, vs. #4/4 Texas, 11/27
Best Scoring Run.....	8 points (2nd-9:19, at #22/21 Louisville, 12/4
Best Scoring Run Against.....	8 points, 1st-1:31, vs. #8/10 Southern Cal, 11/15
Most Lead Changes.....	13 at #22/21 Louisville, 12/4
Most Times Tied.....	8 vs. #4/4 Texas, 11/27
Most minutes trailed.....	27:18 vs. #4/4 Texas, 11/27

Latson is 10th in the SEC in scoring at 17.8 points per game and 14th in field goal percentage, hitting 51.9 percent, including 45.2 percent from 3-point range. Her 3.7 assists per game (13th in SEC) have led to another 8.5 points per game, meaning she has her hands on 26.3 percent of the Gamecocks' total offense.

M.O.-mentum

After just starting the sport at 17 years old, 6-foot-6 center Madina Okot is becoming one of the most dominant centers in the sport. Last season at Mississippi State, she was the SEC's top percentage shooter (.649) and fourth in rebounding. With a year of eligibility remaining, she chose to come to South Carolina with the mindset to be the next entry in the Gamecocks' legacy of dominant post players.

The quiet Okot has drawn praise from her head coach on her strength and agility and been challenged to show her dominance every time she steps on the court. After an average season opener, Okot has been rising to that challenge, and both her production and her comfort level have been growing exponentially.

Okot is second in the nation with seven double-doubles and her SEC-best 11.1 rebounds per game are ninth in the nation. Shooting 61.0 percent from the field, including three games over 70.0 percent, she is fourth in the SEC and 14th in the nation in that category. Her 1.7 blocks per game are seventh in the SEC, and her 3.7 offensive boards per game are third.

Agot Send

Freshman guard Agot Makeer was ranked sixth in the Class of 2025 and drew McDonald's All-America and honorable mention Naismith All-America honors out of Montverde Academy (FL). She opened her college career on the USWBA Tamika Catchings Freshman of the Year and the Wooden Award watch lists.

After leading Montverde to a runner-up finish at the Chipotle High School National Championships, Makeer, suited up for Canada at the FIBA U19 World Cup, helping it to a fourth-place finish with 10.3 points, including 46.2 percent 3-point shooting, and 4.9 rebounds per game.

The long, lithe Makeer is averaging 5.9 points to go along with 3.6 rebounds per game.

Ay-aye Captain

The #15 player in the 2025 Class, freshman guard Ayla McDowell is a McDonald's All-American and a three-time district MVP out of Cypress, Texas, who's international

experience with Brazil's national team has helped smooth her transition to college basketball.

McDowell amassed over 2,700 career points in high school before donning a Brazil jersey at the FIBA AmeriCup and the FIBA U19 World Cup over the summer. For the U19 team, she was the top scorer with a 16.8 scoring average while averaging 4.5 rebounds and 2.7 steals.

Coaches have praised her competitive fire and her predictability on the defensive end, meaning she is trusted to make the right play. On the other end of the court, McDowell is finding her spots in the flow of the offense, learning when to shoot and when to defer.

McDowell is scoring 5.2 points per game on 40.0 percent shooting, including 42.9 percent from 3-point range, and she is hitting 80.0 percent of her free throws.

In the last three games, McDowell's confidence has soared. She hit a clutch 3 and came up with a pair of offensive rebounds at #22/21 Louisville (Dec. 4). In the next game, she poured in 16 points, including five 3s against NC Central (Dec. 7). Over her last three outings, she has posted 7.7 points per game on 50.0 percent shooting, including 60.0 percent (6-of-10) from 3-point range.

Everybody's All-American

The Gamecocks' 11-woman roster includes eight McDonald's All-Americans – Maryam Dauda, Joyce Edwards, Raven Johnson, Tessa Johnson, Ta'Niya Latson, Agot Makeer, Maddy McDaniel and Ayla McDowell.

At South Carolina, Staley has coached 29 McDonald's All-Americans, including 22 who signed as freshmen.

What's Next

Just as the 2025-26 season began, event organizers were already releasing plans for the Gamecocks' 2026-27 season. South Carolina will be making its second appearance at all four events.

The Gamecocks will return to Paris for Oui Play 2026, facing Maryland in the season opener on Nov. 2. The return game of the Sprouts Farmers Market The Real SC game is set for Bon Secours Wellness Arena in Greenville, S.C., on Nov. 15. The Gamecocks are slated to take on UConn in the 2026 Basketball Hall of Fame Women's Showcase on Nov. 24. And the Charlotte Sports Foundation announced South Carolina's three-year commitment to the Ally Tipoff with games against North Carolina (2026), UConn (2027) and NC State (2028).

Who's Next

Head coach Dawn Staley signed a pair of top-20 players in the early signing period in forwards Kelsi Andrews and Kaeli Wynn. Both are on the Naismith Trophy Girls' High School Player of the Year watch list, released in November.

The 6-foot-3 Andrews is the #18 player in the Class of 2026 after helping lead IMG Academy to a high school national championship in 2025 with a 12-point, 13-rebound performance in the title game. She has also helped the U.S. to gold medals in the 2024 FIBA U17 World Cup and the 2023 FIBA U16 Americas Championship.

Wynn is the #17 player in the 2026 Class, standing 6-foot-2 and coming from basketball coach parents. She was a first-team all-state selection as a junior, averaging 17 points, 7.1 rebounds and 2.7 assists at Mater Dei High School, which was ranked No. 1 in the nation throughout the season.

WNBA Pipeline

Dawn Staley's status as a dream merchant is most evident by the steady stream of Gamecocks being drafted into and enjoying lengthy careers in the WNBA. Since her first Gamecock was drafted in 2015, she has seen 18 have their name called on draft night – the second-most by a program in that time.

Staley's numbers have skyrocketed since 2020 with an NCAA-best 12 draft picks since then, including a best-in-the-nation six first-round selections in that time.

In proof Staley sends players to the league ready, six Gamecocks have earned All-Rookie Team honors, including three WNBA Rookies of the Year – Allisha Gray (2017), Aja Wilson (2018), Aliyah Boston (2023).

Great Gamecock Fans

South Carolina fans have led the nation in average attendance for the last 11 seasons, although the NCAA does not officially recognize the COVID-limited attendance in the 2020-21 season. The Gamecocks are on track to continue that streak after selling out of season tickets for the second time in as many seasons and opening the 2025-26 slate by hosting the seven highest-attended games of the season to average 15,880 fans per game.

The Gamecocks have had at least one sellout of their 18,000-seat Colonial Life Arena for eight straight seasons (excluding COVID-limited 2020-21 season) dating back to the first ever sellout of 18,000 on Feb. 8, 2016. There have been at least five sellouts in each of the last two seasons.

South Carolina's 2024-25 attendance average of 16,437 was the second-highest in the history of the NCAA, narrowly trailing Tennessee's 1998-99 average of 16,565. That mark included a program-record seven sellouts.

SEASON THEME: BEYOND MEASURE

Each year Dawn Staley chooses a theme for the team and fans to center their season around, and it often reflects not just the state of South Carolina women's basketball, but that of the game overall.

The Gamecocks' 2025-26 season theme is Beyond Measure, which centers on the value of the whole person or group beyond the commonly measured scale. A player's value to the team is not measured solely by her statline but also by a myriad of other ways she elevates her team. Championships and awards are not valued because they yield a trophy but also because they lift up a university, a city, a state. The value of the FAMS who support the team around the country is more than the value of ticket sales, but it is in the way they form a united community that supersedes all their difference.

More broadly, Beyond Measure is a reminder that the ceiling of the team and its players – and that of women's basketball as a sport – will always shatter any limitations others may place on it.

2025-26 ROSTER

No.	Name	Pos.	Ht.	Yr.	Hometown/Last School
00	Ta'Niya Latson	G	5-8	Sr.	Miami, Fla./Florida State
1	Maddy McDaniel	G	5-9	So.	Upper Marlboro, Md./Bishop McNamara
5	Tessa Johnson	G	6-0	Jr.	Albertville, Minn./Saint Michael Albertville
8	Joyce Edwards	F	6-3	So.	Camden, S.C./Camden
11	Madina Okot	C	6-6	Sr.	Mumias, Kenya / Mississippi State
15	Adhel Tac	F	6-5	So.	Grand Prairie, Texas/South Grand Prairie
21	Chloe Kitts	F	6-2	Sr.	Oviedo, Fla./DME Academy
24	Ayla McDowell	G	6-1	Fr.	Cypress, Texas/Cypress Springs
25	Raven Johnson	G	5-9	Sr.	Atlanta, Ga./Westlake
30	Maryam Dauda	F	6-4	Sr.	Bentonville, Ark./Arkansas
44	Agot Makeer	G	6-0	Fr.	Thunder Bay, Ontario / Montverde Academy (FL)

Head Coach: Dawn Staley

Assoc. Head Coach: Lisa Boyer

Assistant Coaches: Jollette Law, Wendale Farrow, Mary Wooley, Khadijah Sessions

Sports Performance Coach: Molly Binetti; **Athletic Trainer:** Craig Oates

SOUTH CAROLINA'S RECORD WHEN ...

	vs. Ranked	SEC	All
Record	2-1		9-1
Playing a ranked opponent	2-1		2-1
Playing at home			7-0
Playing on the road	1-0		1-0
Playing at neutral site	1-1		2-1
Leading at half	2-0		10-0
Trailing at half	0-1		0-1
Tied at half			0-0
Playing an overtime game			0-0
0 players score in double figures			0-0
1 player scores in double figures			0-0
2 players score in double figures			0-0
3 players score in double figures			0-0
4 players score in double figures	2-1		7-1
5 players score in double figures			1-0
More than 5 players in double figures			2-0
Starters out-score opponent's starters	2-1		10-1
Opponent's starters score equal/more			0-0
Bench out-scores opponent's bench			5-0
Opponent's bench scores equal/more	2-1		5-1
Shooting 60% or better			3-0
Shooting between 50-59%			3-0
Shooting between 40-49%	2-1		4-1
Shooting between 30-39%			0-0
Shooting lower than 30%			0-0
Opponent shoots 50% or better			0-0
Opponent shoots between 40-49%	1-1		1-1
Opponent shoots between 30-39%	1-0		4-0
Opponent shoots between 20-29%			5-0
Opponent shoots less than 20%			0-0
Shooting better than opponent	2-1		10-1
Shooting worse than/equal to opponent			0-0
Having more FTs made than opponent	1-0		9-0
Having equal/fewer FTs made than opponent	1-1		1-1
Out-rebounding opponent	1-0		8-0
Having equal rebounds as opponent	1-0		1-0
Having fewer rebounds than opponent	0-1		1-1
Having fewer TOs than opponent	1-0		8-0
Having equal TOs as opponent	1-0		1-0
Having more TOs than opponent	0-1		1-1
Attempting more FT than 3FG	2-1		10-1
Attempting equal/fewer FT than 3FG			0-0
Making 5 or more 3FGs	1-0		8-0
Making fewer than 5 3FGs	1-1		2-1
Making no 3 FGs			0-0
Attempting 15 or more 3FGs	1-0		6-0
Attempting fewer than 15 3FGs	1-1		4-1
No South Carolina players foul out	2-0		10-0
One or more SC players foul out	0-1		0-1
No opposing players foul out	2-1		6-1
One or more opposing players foul out			4-0

	vs. Ranked	SEC	All
Assist at least half of field goals made	2-1		9-1
Assist on less than half of field goals made			1-0
Scoring more pts. in paint than opponent	2-1		10-1
Scoring equal/fewer pts. in paint than opp.			0-0
Scoring more pts. off TOs than opponent	1-0		8-0
Scoring equal/fewer pts. off TOs than opp.	1-1		2-1
Scoring more 2nd-chance pts.	1-0		7-0
Scoring equal/fewer 2nd-chance pts.	1-1		3-1
Scoring more fast break pts.	1-0		9-0
Scoring equal/fewer fast break pts.	1-1		1-1
Wearing primary white uniforms			7-0
Wearing secondary (Cocky) white uniforms	0-1		0-1
Wearing black script Carolina uniforms	2-0		3-0
Wearing garnet uniforms			0-0
Playing in November	1-1		7-1
Playing in December	1-0		3-0
Playing in January			0-0
Playing in February			0-0
Playing in March			0-0
Playing in April			0-0
Playing during the day			4-0
Playing at night	2-1		6-1
Playing on Sunday			3-0
Playing on Monday			1-0
Playing on Tuesday			1-0
Playing on Wednesday			2-0
Playing on Thursday	1-1		1-1
Playing on Friday			1-0
Playing on Saturday	1-0		1-0
Margin is less than 5 pts.	1-1		1-1
Margin is between 5-9 pts.			0-0
Margin is between 10-19 pts.	1-0		2-0
Margin is between 20-29 pts.			1-0
Margin is between 30-39 pts.			0-0
Margin is between 40-49 pts.			2-0
Margin is 50 pts. or more			4-0
Having a 20-pt. scorer	1-0		8-0
Having more than one 20-pt scorer	1-0		5-0
Having a 30-pt. scorer			0-0
Scoring 49 points or less			0-0
Scoring 50-59 points			0-0
Scoring 60-69 points	1-1		2-1
Scoring 70-79 points	1-0		1-0
Scoring 80-89 points			1-0
Scoring 90-99 points			3-0
Scoring 100 points or more			3-0
Opponent scores 39 points or less			1-0
Opponent scores 40-49 points			3-0
Opponent scores 50-59 points	1-0		4-0
Opponent scores 60-69 points	0-1		1-1
Opponent scores 70-79 points	1-0		1-0
Opponent scores 80-89 points			0-0
Opponent scores 90-99 points			0-0
Opponent scores 100 points or more			0-0

2025-26 TEAM HIGH / LOW

South Carolina Highs	South Carolina Lows	Category	Opponent Lows	Opponent Highs
121 vs. Queens, 11/23*	64 vs. Texas, 11/27	Points in Game	37, Clemson, 11/11	77, at Louisville, 12/4
63 vs. Queens (2nd), 11/23	29 vs. Texas (1st), 11/27	Points in a Half	13, Clemson (2nd), 11/11	39, at Louisville (1st), 12/4
			39, vs. Duke (2nd), 11/26	
33 vs. Queens (4th), 11/23	10 vs. Texas, 11/27	Points in a Quarter	2, NC Central (3rd), 12/7	25, at Louisville (1st), 12/4
33 vs. Winthrop (2nd), 11/19	10 vs. Clemson (3rd), 11/11		2, Clemson (4th), 11/11	
43 vs. Queens, 11/23	25 vs. Texas, 11/27	Field Goals Made	14, Clemson, 11/11	31, at Louisville, 12/4
43 vs. Winthrop, 11/19				
74 vs. Duke, 11/26	57 vs. Grand Canyon, 11/3	Field Goal Attempts	54, NC Central, 12/7	74, Bowling Green, 11/7
.662 (43-65) vs. Queens, 11/23	.408 (29-71) vs. SoCal, 11/15	FG Percentage	.229 (16-70), Queens, 11/23	.477 (31-65), at Louisville, 12/4
11 vs. NC Central, 12/7	1 vs. Duke, 11/26	3-Point FG Made	1, vs. Texas, 11/27	9, at Louisville, 12/4
			1, vs. Southern Cal, 11/15	9, Queens, 11/23
21 vs. Penn State, 12/14	7 vs. Texas, 11/27	3-Point FG Attempts	6, vs. Texas, 11/27	34, Grand Canyon, 11/3
21 vs. NC Central, 12/7				
.556 (5-9) vs. Clemson, 11/11	.100 (1-10) vs. Duke, 11/26	3-Point FG Percentage	.071 (1-14), vs. SoCal, 11/15	.400 (8-20), vs. Duke, 11/26
27 vs. NC Central, 12/7	7 vs. Southern Cal, 11/15	Free Throws Made	4, Penn State, 12/14	15, vs. Texas, 11/27
27 vs. Queens, 11/23			4, NC Central, 12/7	
			4, Clemson, 11/11	
34 vs. NC Central, 12/7	10 vs. Clemson, 11/11	Free Throw Attempts	4, Clemson, 11/11	20, vs. Texas, 11/27
34 vs. Queens, 11/23				
.800 (24-30) vs. BGSU, 11/7	.536 (15-28) vs. Penn State, 12/14	FT Percentage	.400 (4-10), Penn State, 12/14	.833 (5-6), Bowling Green, 11/7
53 vs. Bowling Green, 11/7	32 vs. Texas, 11/27	Rebounds	24, Winthrop, 11/19	51, Penn State, 12/14
26 vs. Queens, 11/23	11 vs. Clemson, 11/11	Assists	6, Grand Canyon, 11/3	17, vs. Duke, 11/26
26 vs. Bowling Green, 11/7				
17 vs. Penn State, 12/14	3 vs. Clemson, 11/11	Steals	2, Winthrop, 11/19	11, Bowling Green, 11/7
12 vs. Queens, 11/23	1 at Louisville, 12/4	Blocked Shots	0, Winthrop, 11/19x	7, vs. Southern Cal, 11/15
17 vs. NC Central, 12/7	5 vs. Penn State, 12/14	Turnovers	7, vs. Duke, 11/26	36, NC Central, 12/7
17 vs. Southern Cal, 11/15				
21 vs. Grand Canyon, 11/3	9 vs. Bowling Green, 11/7	Fouls	13, vs. Duke, 11/26	26, Grand Canyon, 11/3
			13, vs. Southern Cal, 11/15	

* indicates program record; ^ indicates Staley-era program record

2025-26 INDIVIDUAL SUPERLATIVES

Category	South Carolina	Opponent
Points in Game	32 by Ta'Niya Latson vs. NC Central, 12/7	22 by Kiyomi McMiller, Penn State, 12/14
Points in a Half	26 by Ta'Niya Latson vs. NC Central (2nd), 12/7	14 by Kiyomi McMiller, Penn State, 12/14
Points in a Quarter	13 by Ta'Niya Latson vs. NC Central (4th), 12/7	13 by Chloe Mann, Grand Canyon (2nd), 11/3
	13 by Ta'Niya Latson vs. NC Central (3rd), 12/7	
Field Goals Made	13 by Joyce Edwards vs. Penn State, 12/14	9 by Kiyomi McMiller, Penn State, 12/14
Field Goal Attempts	20 by Joyce Edwards vs. Penn State, 12/14	27 by Kiyomi McMiller, Penn State, 12/14
FG Percentage (min 5 FGM)	.917 (11-12) by Joyce Edwards vs. Bowling Green, 11/7	.600 (6-10) by Elif Istanbuluoglu, at Louisville, 12/4
3-Point FG Made	5 by Ta'Niya Latson vs. NC Central, 12/7	4 by Tierney Coleman, NC Central, 12/7
	5 by Ayla McDowell vs. NC Central, 12/7	4 by Tajianna Roberts, at Louisville, 12/4
		4 by Mya Pierfax, Winthrop, 11/19
3-Point FG Attempts	7 by Ta'Niya Latson vs. Penn State, 12/14	9 by Moriah Murray, Penn State, 12/14
	7 by Ayla McDowell vs. NC Central, 12/7	
	7 by Tessa Johnson at Louisville, 12/4	
	7 by Tessa Johnson vs. Winthrop, 11/19	
3FG Percentage (min 3 FGM)	.833 (5-6) by Ta'Niya Latson vs. NC Central, 12/7	.667 (4-6) by Tierney Coleman, NC Central, 12/7
Free Throws Made	8 by Maddy McDaniel vs. NC Central, 12/7	6 by Jordan Lee, vs. Texas, 11/27
Free Throw Attempts	10 by Joyce Edwards vs. NC Central, 12/7	8 by Justice Carlton, vs. Texas, 11/27
	10 by Maddy McDaniel vs. NC Central, 12/7	
FT Percentage (min 5 FTM)	1.00 (7-7) by Ta'Niya Latson vs. Penn State, 12/14	1.000 (6-6) by Jordan Lee, vs. Texas, 11/27
	1.00 (7-7) by Ta'Niya Latson vs. Bowling Green, 11/7	
Rebounds	15 by Madina Okot vs. Southern Cal, 11/15	9, 4x, most recent Gracie Merkle/Shayla Smith, Penn State, 12/14
Assists	11 by Raven Johnson vs. Bowling Green, 11/7	9 by Rori Harmon, vs. Texas, 11/27
Steals	6 by Joyce Edwards vs. Penn State, 12/14	5 by Madison Booker, vs. Texas, 11/27
	6 by Raven Johnson vs. NC Central, 12/7	5 by Johna Donahue, Bowling Green, 11/7
Blocked Shots	4 by Joyce Edwards vs. Penn State, 12/14	3 by Kennedy Smith, vs. Southern Cal, 11/15
	4 by Madina Okot vs. Bowling Green, 11/7	
Turnovers	7 by Joyce Edwards vs. NC Central, 12/7	9 b Najah Lane, NC Central, 12/7

* indicates program record

^ indicates Staley-era program record

THE LAST TIME...

INDIVIDUAL

Scored 50 Points

South Carolina 51, Jocelyn Penn vs. Stetson, 1/4/03
Opponent Never

Scored 40 Points

South Carolina 51, Jocelyn Penn vs. Stetson, 1/4/03
Opponent 41, Caitlyn Clark, Iowa, 3/31/23

Scored 30 Points

South Carolina 32, Ta'Niya Latson vs. NC Central, 12/7/25
Opponent 31, DeYona Gaston, Auburn, 2/2/25

Grabbed 20 Rebounds

South Carolina 20, Ashlyn Watkins vs. NC State, 4/5/24
Opponent 24, Teaira McCowan, at Mississippi State, 1/17/19

Grabbed 15 Rebounds

South Carolina 15, Madina Okot vs. Southern Cal, 11/15/25
Opponent 15, Sarah Strong, vs. UConn, 4/6/25

Two Players with 20 or More Points

South Carolina Ta'Niya Latson 32/Joyce Edwards 25 vs. NC Central, 12/7/25
Opponent Azzi Fudd 24/Sarah Strong 24, vs. UConn, 4/6/25

Three or More Players with 20 or More Points

South Carolina T. Latson 24/M. Okot/J. Edwards 22 vs. Winthrop, 11/19/25
Opponent B McCain 29/T Stocks 23/N Mobley 20, Florida, 1/21/01

Two Players with 10 or More Rebounds

South Carolina Madina Okot 12/Adhel Tac 10 vs. Queens, 11/23/25
Opponent Angel Reese 13/Aneesah Morrow 10, vs. LSU, 3/10/24

Three or More Players with 10 or More Rebounds

South Carolina M. Okot 15/R. Johnson 11/J. Edwards 10 vs. Southern Cal, 11/15/25
Opponent W. Rolle 12/J. Breland 10/L. Broomfield 10, vs. North Carolina, 12/19/10

Had 10 Assists

South Carolina 10, Raven Johnson vs. Winthrop, 11/19/25
Opponent 10, Paige Bueckers, UConn, 2/16/25

Had Five Steals

South Carolina 6, Joyce Edwards vs. Penn State, 12/14/25
Opponent 5, Madison Booker, vs. Texas, 11/27/25

Had Five Blocked Shots

South Carolina 5, Sania Feagin at Ole Miss, 2/27/25
Opponent 5, Rita Igboke, vs. Ole Miss, 3/4/23

Had 20 Points and 20 Rebounds

South Carolina Aliyah Boston (28 pts/22 rebs) vs. N. Carolina, 3/25/22
Opponent Teaira McCowan (26 pts/24 rebs) at Mississippi State, 1/17/19

Two Players had a Double-Double

South Carolina Madina Okot (14 pts/12 rebs) / Adhel Tac (11 pts/10 rebs) vs. Queens, 11/23/25
Opponent Angel Reese (15 pts/13 rebs) / Aneesah Morrow (19 pts/10 rebs) vs. LSU, 3/10/24

Three or More Players had a Double-Double

South Carolina L. Amihere (11 pts/11 rebs) / A. Boston (11 pts/12 rebs) / L. Grissett (13 pts/10 rebs) / V. Saxton (19 pts/12 rebs) vs. Charleston, 11/25/20
Opponent Shakira Austin (10 pts/16 rebs) / Kaila Charles (17 pts/10 rebs) / Channise Lewis (10 pts/12 assts), Maryland, 11/18/18

Had a Triple-Double

South Carolina Chloe Kitts (16 pts/13 rebs/10 assts) at Ole Miss, 2/27/25
Opponent Never

TEAM

Scored 100 Points

South Carolina 121 vs. Queens, 11/23/25
Opponent 103, Clemson, 11/21/03

Won by 50 or More Points

South Carolina 106-42 (64) vs. NC Central, 12/7/25
Opponent 97-39 (58) at UConn, 12/17/07

Won by 30-49 Points

South Carolina 95-55 (40) vs. Penn State, 12/14/25
Opponent 66-34 (32), Georgia, 3/4/11

Overcame More Than 15-Point Deficit to Win

South Carolina 18 (16-34) 6:24 in 2nd qtr. vs. Stanford, 12/21/21*
Opponent 16 (21-37) 1:43 in 2nd qtr., at Tennessee, 2/18/21

Shot 65.0% or Better from the Field

South Carolina .662 (43-65) vs. Queens, 11/23/25
Opponent Never

Shot 60.0-64.9% from the Field

South Carolina .642 (43-67) vs. Winthrop, 11/19/25
Opponent .604 (29-48), Vanderbilt, 1/18/01

Shot 50.0-59.9% from the Field

South Carolina .507 (37-73) vs. Penn State, 12/14/25
South Carolina .507 (34-67) vs. NC Central, 12/7/25
Opponent .500 (25-50), Auburn, 2/2/25

No Players in Double-Figure Points

South Carolina at Auburn, 1/19/12
Opponent at Georgia, 2/6/25

Five Players in Double-Figure Points

South Carolina vs. Grand Canyon, 11/3/25
Opponent vs. Indiana, 3/29/24

More Than Five Players in Double-Figure Points

South Carolina 6 vs. Queens, 11/23/25
Opponent 5, at UCLA, 11/24/24

Faced AP Top-25 Opponent

Win 79-77 at No. 22 Louisville, 12/4/25
Loss 67-75 at No. 21 Tennessee, 2/18/21

Faced AP Top-10 Opponent

Win 69-52 vs. No. 8 Southern Cal, 11/15/25
Loss 58-87 vs. No. 7 UConn, 2/16/25

Faced AP Top-5 Opponent

Win 74-57 vs. No. 5 Texas, 4/4/25
Loss 66-64 vs. No. 4 Texas, 11/27/25

Faced AP No. 1 Team

Win 64-45 vs. Texas, 3/9/25 (SEC Tournament championship)
Loss 68-93 vs. Baylor, 3/30/19 (NCAA Sweet 16)

Overtime Game

Win 64-57 at Ole Miss, 2/19/23
Loss 69-70 at Missouri, 12/30/21

Double-Overtime Game

Win 82-73 at Purdue, 12/16/18
Loss 92-94 at Clemson, 11/19/09

South Carolina Was Ranked (AP Poll)

No. 1 No. 1, 11/18/24
Top 5 No. 3, 12/15/25
Top 10 No. 6, 2/24/25
Top 25 No. 15, 3/19/19

* indicates program record

SOUTH CAROLINA SINGLE-QUARTER RECORDS

TEAM			INDIVIDUAL		
Scoring			Scoring		
Most	Points		Most	Points	
1. vs. Saint Peter's, 11/22/16, 1st qtr.	37		1. Kaela Davis at Auburn, 1/5/17, 1st qtr.	19	
2. vs. Florida, 2/13/25, 1st qtr.	36		2. A'ja Wilson vs. Notre Dame, 11/26/17, 4th qtr.	18	
at Kentucky, 1/12/23, 4th qtr.	36		3. Alexis Jennings at Florida, 2/17/19, 3rd qtr.	17	
vs. Alabama, 2/3/22, 1st qtr.	36		4. Zia Cooke at Georgia, 1/2/23, 4th qtr.	15	
at Vanderbilt, 1/12/20, 3rd qtr.	36		Aliyah Boston vs. Florida, 12/31/20, 2nd qtr.	15	
vs. Alabama State, 3rd qtr.	36		M. Herbert Harrigan vs. TX A&M, 3/1/20, 1st qtr.	15	
			Kaela Davis vs. Quinnipiac, 3/25/17, 3rd qtr.	15	
			Tina Roy vs. Arkansas, 1/3/16, 3rd qtr.	15	
Fewest	Points		Rebounding		
1. vs. App State, 12/5/18, 4th qtr.	5		Most	Rebs	
2. vs. Oregon State, 3/23/21, 4th qtr.	6		1. Kamilla Cardoso vs. Ole Miss, 3/4/23, 2nd qtr.	9	
vs. Indiana, 11/28/19, 4th qtr.	6		Aliyah Boston vs. N. Carolina, 3/25/22, 4th qtr.	9	
vs. St. John's, 11/25/17, 2nd qtr.	6		LeLe Grissett at Vanderbilt, 1/14/21, 4th qtr.	9	
vs. Stanford, 3/31/17, 2nd qtr.	6		Aliyah Boston vs. UConn, 2/10/20, 1st qtr.	9	
vs. UCLA, 12/18/16, 1st qtr.	6		Aliyah Boston vs. Arkansas, 1/9/20, 1st qtr.	9	
			Alaina Coates at Arkansas, 2/5/17, 1st qtr.	9	
			Alaina Coates at Georgia, 1/26/17, 2nd qtr.	9	
Fewest Allowed	Points		Rebounding		
1. vs. Texas, 3/30/21, 4th qtr.	0		Total	Rebs	
at Vanderbilt, 1/14/21, 2nd qtr.	0		1. vs. Arkansas, 3/7/20, 4th qtr.	28	
at Ole Miss, 1/30/20, 1st qtr.	0		2. vs. Charleston, 11/25/20, 3rd qtr.	22	
4. vs. NC Central, 12/7/25 3rd qtr.	2		3. vs. Howard, 3/18/22, 1st qtr.	21	
vs. Clemson, 11/11/25, 4th qtr.	2		4. vs Coastal Carolina, 12/21/22, 1st qtr.	20	
4 other times	2		vs. Hampton, 11/27/22, 3rd qtr.	20	
			vs. Howard, 3/18/22, 3rd qtr.	20	
			vs. Howard, 3/18/22, 2nd qtr.	20	
			vs. Charleston, 11/25/20, 1st qtr.	20	
			at Ohio State, 11/14/16, 1st qtr.	20	
Most Allowed	Points		Margin		
1. vs. Baylor, 12/2/18, 1st qtr.	32		Rebs	Margin	
at Maryland, 11/13/17, 4th qtr.	32		1. vs. Hampton, 11/27/22, 3rd qtr.	20-2	+18
vs. Kentucky, 2/26/17, 4th qtr.	32		vs. Charleston, 11/25/20, 3rd qtr.	22-4	+18
4. vs. Arkansas, 3/8/19, 3rd qtr.	30		3. vs. Arkansas, 1/22/23, 2nd qtr.	19-2	+17
vs. Connecticut, 3/26/18, 1st qtr.	30		4. vs. Arkansas, 1/22/23, 3rd qtr.	18-2	+16
vs. Syracuse, 3/25/16, 4th qtr.	30		vs. Howard, 3/18/22, 2nd qtr.	20-4	+16
			vs. Arkansas, 3/7/20, 4th qtr.	21-5	+16
Margin of Difference	Score	Margin	Rebounding		
Lead			Total	Rebs	
1. vs. Alabama State, 11/5/19, 3rd qtr.	36-9	+37	1. vs. Arkansas, 3/7/20, 4th qtr.	28	
2. vs. App State, 11/17/19, 1st qtr.	35-3	+32	2. vs. Charleston, 11/25/20, 3rd qtr.	22	
3. vs. NC Central, 12/7/25, 3rd qtr.	28-2	+26	3. vs. Howard, 3/18/22, 1st qtr.	21	
vs. Charleston, 11/25/20, 3rd qtr.	34-8	+26	4. vs Coastal Carolina, 12/21/22, 1st qtr.	20	
vs. USC Upstate, 11/21/19, 3rd qtr.	33-7	+26	vs. Hampton, 11/27/22, 3rd qtr.	20	
vs. Arkansas, 1/3/16, 2nd qtr.	35-9	+26	vs. Howard, 3/18/22, 3rd qtr.	20	
			vs. Howard, 3/18/22, 2nd qtr.	20	
			vs. Charleston, 11/25/20, 1st qtr.	20	
			at Ohio State, 11/14/16, 1st qtr.	20	
Deficit	Score	Margin	Margin		
1. vs. UConn, 2/1/18, 2nd qtr.	8-29	-21	Rebs	Margin	
2. at Tennessee, 2/15/18, 3rd qtr.	9-29	-20	1. vs. Hampton, 11/27/22, 3rd qtr.	20-2	+18
3. vs. Baylor, 12/2/18, 1st qtr.	13-32	-19	vs. Charleston, 11/25/20, 3rd qtr.	22-4	+18
at Mississippi State, 2/5/18, 4th qtr.	9-28	-19	3. vs. Arkansas, 1/22/23, 2nd qtr.	19-2	+17
5. vs. Indiana, 11/28/19, 4th qtr.	6-24	-18	4. vs. Arkansas, 1/22/23, 3rd qtr.	18-2	+16
vs. Connecticut, 3/26/18, 1st qtr.	12-30	-18	vs. Howard, 3/18/22, 2nd qtr.	20-4	+16
			vs. Arkansas, 3/7/20, 4th qtr.	21-5	+16
Field Goals	FGM		Margin		
Made			Rebs	Margin	
1. at Florida, 2/27/20, 1st qtr.	15		1. vs. Hampton, 11/27/22, 3rd qtr.	20-2	+18
vs. Saint Peter's, 11/22/16, 1st qtr.	15		vs. Charleston, 11/25/20, 3rd qtr.	22-4	+18
3. vs. Florida, 2/13/25, 1st qtr.	14		3. vs. Arkansas, 1/22/23, 2nd qtr.	19-2	+17
vs. Coastal Carolina, 12/21/22, 1st qtr.	14		4. vs. Arkansas, 1/22/23, 3rd qtr.	18-2	+16
vs. Alabama, 2/3/22, 1st qtr.	14		vs. Howard, 3/18/22, 2nd qtr.	20-4	+16
vs. App State, 11/17/19, 1st qtr.	14		vs. Arkansas, 3/7/20, 4th qtr.	21-5	+16
vs. Notre Dame, 11/26/17, 4th qtr.	14				
vs. Arkansas, 1/3/16, 2nd qtr.	14				
Attempts	FGA				
1. vs. Arkansas, 3/7/20, 4th qtr.	28				
2. vs. Duke, 11/26/25, 2nd qtr.	26				
3. vs. Arkansas, 2/20/25, 3rd qtr.	25				
vs. Oklahoma, 1/19/25, 2nd qtr.	25				
vs. Purdue, 11/30/24, 1st qtr.	25				
vs. Howard, 3/18/22, 1st qtr.	25				
vs. Arkansas, 1/9/20, 3rd qtr.	25				



ALL-TIME SELLOUTS

18,478	Georgia, 2/18/24
18,167	UConn, 2/11/24
18,000	Kentucky, 3/2/25
18,000	UConn, 2/16/25
18,000	Auburn, 2/2/25
18,000	LSU, 1/24/25
18,000	Oklahoma, 1/19/25
18,000	Texas, 1/12/25
18,000	East Carolina, 11/17/24
18,000	Tennessee, 3/3/24
18,000	Ole Miss, 2/5/24
18,000	Vanderbilt, 1/28/24
18,000	Georgia, 2/26/23
18,000	LSU, 2/12/23
18,000	Tennessee, 2/20/22
18,000	Texas A&M, 3/1/20
18,000	UConn, 2/10/20
18,000	Mississippi State, 3/3/19
18,000	UConn, 2/1/18
18,000	Kentucky, 2/26/17
18,000	UConn, 2/8/16

YEAR-BY-YEAR RECORD

Year	Record	Pct.	Att. Avg.
2002-03	14-2	.875	3,244
2003-04	5-6	.455	1,828
2004-05	8-9	.471	1,764
2005-06	12-5	.706	1,455
2006-07	15-5	.750	1,845
2007-08	12-6	.667	1,802
2008-09	6-9	.400	2,793
2009-10	7-5	.583	3,442
2010-11	14-5	.737	2,996
2011-12	12-3	.800	3,139
2012-13	12-3	.800	4,082
2013-14	16-0	1.000	6,371
2014-15	16-0	1.000	12,293
2015-16	16-1	.941	14,364
2016-17	15-1	.938	12,277
2017-18	15-2	.882	13,239
2018-19	11-4	.733	11,542
2019-20	15-0	1.000	12,185
2020-21	10-1	.909	3,500*
2021-22	16-0	1.000	12,268
2022-23	17-0	1.000	12,942
2023-24	17-0	1.000	16,067
2024-25	16-1	.941	16,437
2025-26	7-0	1.000	15,880
Total	304-68	.817	7,880*
Staley Era	238-35	.872	10,109*

* 2020-21 attendance not counted in average or streaks due to COVID-19 restrictions

In women's basketball, Colonial Life Arena has become one of the most feared places to play as enormous crowds fill the building with passion for the Gamecocks.

The state of South Carolina has rallied around head coach Dawn Staley's program in unprecedented numbers as the Gamecocks have led the nation in average attendance in each of the last 10 seasons and boast 21 sellouts (18,000) in the last 10 seasons of full capacity arenas.

Colonial Life Arena is more than just the home of South Carolina men's and women's basketball, though. It is also a thriving entertainment venue that the city of Columbia and its surrounding metropolitan area are able to enjoy throughout the year.

Colonial Life Arena is the largest arena in the state of South Carolina with 18,000 seats, and the 10th-largest on-campus basketball facility in the nation. Located on the beautiful University of South Carolina campus, this one-of-a-kind facility features 41 suites, four entertainment suites, and the Frank McGuire Club, a full-service hospitality room that has a capacity of 300. The state-of-the-art facility also features plush seating, a technologically advanced sound system and a one-of-a-kind selection of unique concession foods that will delight fans of all ages.

In Summer 2017, a 12-display center-hung video board and ribbon boards were added to the arena bowl at a cost of \$4.2 million. The center-hung board features four convex-curved main displays that measure approximately 12' x 20' and can show any combination of live video, instant replays, statistics and game information, graphics and animations, and sponsorship messages.

The Arena has hosted numerous sold out shows, including Barnum and Bailey Circus, Paul McCartney, country superstars Kenny Chesney and Taylor Swift, WWE Wrestling, Kanye West and numerous other acts.

The largest building ever constructed at the University of South Carolina at 342,000 square feet, the Arena has an intimate double-deck design that puts every seat close to the action. The cantilever of the upper deck over the lower deck extends further than any other arena of its size with great sight lines.

Two spacious locker rooms for Gamecock men's and women's basketball include team meeting rooms, recruiting rooms, coaches locker rooms and an athletic training room.

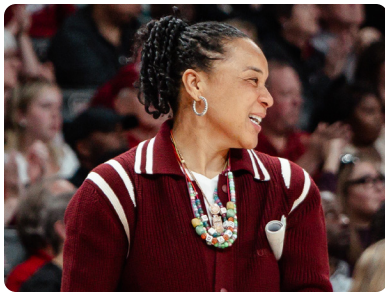
COLONIAL LIFE ARENA NOTABLES

- 10-Time National Attendance Leader (2015-present)
- NCAA Tournament Host in 2015, 2016, 2017, 2018, 2022, 2023, 2024
- 146 consecutive regular-season games with at least 10,000 fans (Jan. 2, 2015-present)*
- 21 official sellouts (18,000) since 2015-16 season
- 6 undefeated seasons
- Longest home win streak – 71 games (12/17/20-2/13/25)

* 2020-21 attendance not counted in average or streaks due to COVID-19 regulation restrictions

"It is a beautiful thing to see unfold because a lot of people really didn't think it could get done. I tip my hat to Gamecock Nation for making this a wonderful place and creating a home court advantage that allows us to win close basketball games."

– South Carolina Head Coach Dawn Staley



Head Coach DAWN STALEY

18th Season at South Carolina
26th Season in Career

Since thrusting South Carolina into the national spotlight when she was hired in May 2008, Dawn Staley has made the Gamecocks a mainstay in the battle for SEC and national championships. The Naismith Memorial Basketball Hall of Fame inductee as a player is angling for another induction as a coach with her standing as one of five head coaches with at least three women's basketball National Championships and the only Black basketball head coach with multiple national titles, one of five head coaches to lead an undefeated team to a National Championship, and the first Black head coach of the USA Basketball Senior National Team.

In Staley's 17 seasons at the helm of the Gamecocks, highlights include:

- Three National Championships (2017, 2022, 2024)
- Seven NCAA Final Fours in the last 10 tournaments (2015, 2017, 2021, 2022, 2023, 2024, 2025)
- Ranking in the AP Top 25 every week since Dec. 10, 2012, the second-longest active streak in the nation and sixth-longest all-time (255)
- 38 straight weeks at No. 1 in the AP Poll, just the third program to go wire-to-wire in back-to-back seasons
- 86 total weeks at No. 1 in the AP Poll, the third-most in the history of that poll
- Eight 30-win seasons, including a program-record 38 wins in 2023-24
- Nine SEC regular-season championships (2014, 2015, 2016, 2017, 2020, 2022, 2023, 2024, 2025)
- Nine SEC Tournament titles (2015, 2016, 2017, 2018, 2020, 2021, 2023, 2024, 2025)
- SEC-record 57 consecutive league regular-season victories, which ranks sixth in NCAA history for conference win streaks
- Four top-two recruiting classes (#2 in 2024, #1 in 2021, #1 in 2019, #2 in 2014)
- 11 NCAA Attendance titles (2015, 2016, 2017, 2018, 2019, 2020, 2021*, 2022, 2023, 2024, 2025)
- 18 WNBA Draft selections, including 11 first-round and two overall No. 1 picks

While her coaching career is in full bloom, Staley is still recognized for her body of work as a one of the most decorated participants in United States women's basketball history. The Naismith Memorial Basketball Hall of Fame solidified that legacy with her enshrinement as part of the Class of 2013. The Phoenix Club of Philadelphia established the Dawn Staley Award recognizing the nation's top guard in women's Division I basketball in 2013 as well. Staley was inducted into the Women's Basketball Hall of Fame as part of the Class of 2012, and she was part of the FIBA Hall of Fame Class of 2025.

In her 26th season as a head coach, Staley has led her college teams to 15 25-win seasons, a total of 21 postseason appearances (two WNIT) and 214 weeks in the Associated Press top 10, including 86 in the No. 1 spot – the third most times in the top spot in the history of that poll. Her .775 winning percentage (657-191) ranks ninth in the nation among active head coaches and 10th all-time.

Also a force in USA Basketball, Staley was named the U.S. Women's National Team head coach for 2017-21, leading the U.S. to 2018 FIBA World Cup gold to earn USA National Coach of the Year honors that year, adding gold medals at the 2019 and 2021 FIBA AmeriCups and stretching the U.S. Olympic gold medal streak to seven straight at the 2020 Tokyo Olympic Games, for which she again earned Coach of the Year honors. Prior to that appointment, Staley led three other U.S. teams to gold medals – 2015 FIBA U19 World Championships, 2014 FIBA U18 Americas Championship, 2007 Pan Am Games – and served as an assistant on the Senior National Team 2006-08 and again 2014-16, during which the U.S. claimed gold in the 2014 FIBA World Championship and the 2008 and 2016 Olympics.

STALEY AT SOUTH CAROLINA YEAR-BY-YEAR

Year	School	Record	Conf. Rec.	Conf. Finish	Postseason
2008-09	South Carolina	10-18	2-12	11th	
2009-10	South Carolina	14-15	7-9	T-7th	
2010-11	South Carolina	18-15	8-8	T-5th	WNIT 2nd Round
2011-12	South Carolina	25-10	10-6	T-4th	NCAA Sweet 16
2012-13	South Carolina	25-8	11-5	T-4th	NCAA 2nd Round
2013-14	South Carolina	29-5	14-2	1st	NCAA Sweet 16
2014-15	South Carolina	34-3	15-1	T-1st	SEC Tourn. Champ./NCAA Final Four
2015-16	South Carolina	33-2	16-0	1st	SEC Tourn. Champ./NCAA Sweet 16
2016-17	South Carolina	33-4	14-2	1st	SEC Tourn. Champ./NCAA Champ.
2017-18	South Carolina	29-7	12-4	T-2nd	SEC Tourn. Champ./NCAA Elite Eight
2018-19	South Carolina	23-10	13-3	2nd	NCAA Sweet 16
2019-20	South Carolina	32-1	16-0	1st	SEC Tourn. Champ./NCAA canceled)
2020-21	South Carolina	26-5	14-2	2nd	SEC Tourn. Champ./NCAA Final Four
2021-22	South Carolina	35-2	15-1	1st	NCAA Champion
2022-23	South Carolina	36-1	16-0	1st	SEC Tourn. Champ./NCAA Final Four
2023-24	South Carolina	38-0	16-0	1st	SEC Tourn., Champ./NCAA Champ
2024-25	South Carolina	35-4	15-1	T-1st	SEC Tourn. Champ./NCAA Runner-Up
2025-26	South Carolina	10-1			
At Temple	8 seasons	172-80	99-25	3 A-10 Titles	4 A-10 Tourn. Titles, 6 NCAA appearances
At SC	18th season	485-111	214-56	9 SEC Titles	9 SEC Trn. Titles, 3 NCAA Titles
Career	26th season	657-191	313-81		

STALEY HIGHLIGHTS

Coaching Highlights

College

- 18 NCAA Tournament Appearances (12 at SC)
- 3x NCAA National Champion (2017, 2022, 2024)
- 7 30-Win Seasons
- 10 Regular-Season Conference Titles (SEC 2014, 2015, 2016, 2017, 2020, 2022, 2023, 2024, 2025; A-10 2008)
- 12 Conference Tournament Titles (SEC 2015, 2016, 2017, 2018, 2020, 2021, 2023, 2024; A-10 2002, 2004, 2005, 2006)
- 5-time National Coach of the Year (2014, 2020, 2022, 2023)
- 4-time WBCA Region Coach of the Year (Region 3 2014, 2015, 2016; Region 1 2005)
- 9x Conference Coach of the Year (SEC 2014, 2015, 2016, 2020, 2022, 2023, 2024; A-10 2004, 2005)

USA Basketball

- Senior National Team Head Coach (2017-21) – Tokyo Olympics gold (2020); FIBA AmeriCup gold (2021); co-National Coach of the Year (2021); FIBA AmeriCup gold (2019), FIBA World Cup gold (2018), National Coach of the Year (2018)
- Senior National Team Asst. Coach (2006-08, 2014-16) – Rio Olympics gold medal (2016), FIBA World Championship gold medal (2014), Beijing Olympics gold medal (2008), FIBA Americas Championship gold medal (2007), FIBA World Championship bronze medal (2006)
- U19 National Team Head Coach – FIBA U19 World Championship gold medal (2015), co-National Coach of the Year (2015)
- U18 National Team Head Coach – FIBA U18 Americas Championship gold medal (2014)
- Pan Am Games Head Coach – Gold medal (2007)

Playing Highlights

U.S. Professional – 11 seasons

- Five-time WNBA All-Star (2001, 2002, 2003, 2005, 2006)
- Two-time ABL All-Star (1997, 1998)
- WNBA All-Decade Team

USA Basketball

- Olympic gold medalist (1996, 2000, 2004)
- Flag bearer for U.S. in Olympic Games Opening Ceremony (2004)
- Two-time USA Basketball Female Athlete of the Year (1994, 2004)

College – Virginia (1989-92)

- Kodak All-America (1990, 1991, 1992)
- Honda-Broderick Cup Award for Collegiate Female Athlete of the Year (1991)
- Two-time ACC Player of the Year (1991, 1992)
- NCAA Tournament MOP (1991)

Other Notables

- FIBA Hall of Fame, Class of 2025
- Naismith Mem. Basketball Hall of Fame, Class of 2013
- Order of the Palmetto Recipient (2013)
- Women's Basketball Hall of Fame, Class of 2012
- Two-time Wanamaker Award (1997, 2005)
- Henry P. Iba Citizenship Award (2007)

In her 19th season at the helm of the Gamecocks, Staley has been named National Coach of the Year five times (2014, 2020, 2022, 2023, 2024). Her 2020 unanimous selection made her the first former Naismith Player of the Year to earn the Naismith Coach of the Year award, and she became the first men's or women's coach to claim the award in three straight seasons 2022-24. She is a seven-time SEC Coach of the Year and was the 2012 BCA Female Coach of the Year. She is the only Gamecock basketball coach – men's or women's – to amass 300 victories at South Carolina and became the fastest coach to 200 wins in program history, needing just 277 games at South Carolina to reach the plateau. She is the program's all-time winningest coach with 484 wins, a .813 (484-111) winning percentage and a program-record 14 postseason appearances.

In the vaunted SEC, Staley's 214 league wins are the most among active league coaches and third all-time, trailing just Women's Basketball Hall of Fame Inductees Andy Landers (Georgia, 273) and Pat Summitt (Tennessee, 306). She was the second fastest to 200 league wins (255 games), trailing only Summitt at 229. Her .793 SEC winning percentage (214-56) is second only to Summitt (.874) in league history. Her Gamecocks are the only SEC program with multiple 16-0 seasons in league history, hitting that mark four times (2015-16, 2019-20, 2022-23, 2023-24). Staley's back-to-back SEC undefeated seasons helped the Gamecocks to an SEC-record 57-game win streak in league play, which ranks sixth in NCAA history for conference win streaks.

In addition to coaching two National Players of the Year, two National Defensive Players of the Year and a National Freshman of the Year, Staley has helped 13 Gamecocks collect 29 All-America selections, three to pick up seven SEC Player of the Year honors, four to earn SEC Defensive Player of the Year recognition a total of eight times, three to SEC 6th Player of the Year honors and six to capture SEC Freshman of the Year. She has coached 23 Gamecocks to All-SEC honors a combined 44 times, including 22 first-team selections. Since her first Gamecock was selected in the 2015 WNBA Draft, a total of 18 South Carolina have been chosen, which is the second-most of any program in that timeframe. Of those 18, 11 have been first-round picks, highlighted by two No. 1 overall picks since 2018. Three Gamecocks have been named WNBA Rookie of the Year and have amassed 13 All-Star selections. Aja Wilson went on to become a three-time WNBA MVP and two-time WNBA Defensive Player of the Year.



SOUTH CAROLINA DAWN STALEY ERA SINGLE-GAME RECORDS

Scoring

Most	Points
1. vs. Queens, 11/23/25	121
2. vs. Charleston, 11/25/20	119
3. 2x, last, vs. Bowling Green, 11/7/25	114

Fewest	Points
1. at Stanford, 11/26/10	32*
2. vs. Georgia, 3/4/11	34
3. vs. Mississippi State, 3/5/09	39

Fewest Allowed	Points
1. vs. Mississippi Valley State, 11/24/23	19*
2. vs. Howard, 3/18/22	21
vs. South Carolina State, 12/14/11	21

Most Allowed	Points
1. at Connecticut, 2/11/19	97
2. vs. Arkansas, 3/8/19	95
3. 3x, most recent, vs. Baylor, 12/2/18	94

Margin of Victory	Score	Margin
1. vs. Miss. Valley State, 11/24/23	101-19	+82
2. vs. Charleston, 11/25/20	119-38	+81
3. vs. Queens, 11/23/25	121-49	+72

Margin of Defeat	Score	Margin
1. at Stanford, 11/26/10	32-70	-38
2. vs. Georgia, 3/4/11	34-66	-32
3. vs. Stanford, 12/19/08	47-78	-31

Field Goals

Made	FGM
1. vs. Clemson, 11/16/23	44
2. 6x, most recent, vs. Queens, 11/23/25	43

Attempts	FGA
1. vs. Clemson, 11/16/23	83
vs. Maryland, 11/12/23	83
3. 2x, most recent, vs. Arkansas, 2/20/25	82

Highest Percentage (Min. 24 FGM)	FGM-A	Pct
1. vs. Morgan State, 12/6/23	41-60	.683
2. at Texas A&M, 1/21/24	39-58	.672
3. vs. Tennessee Tech, 3/21/25	43-64	.672

Lowest Percentage	FGM-A	Pct
1. at Stanford, 11/26/10	12-55	.218
2. vs. Georgia, 3/4/11	12-52	.231
3. at Florida, 1/20/13	15-64	.234

Lowest %age Allowed	FGM-A	Pct
1. vs. Miss. Valley State, 11/24/23	8-67	.119*
2. vs. South Carolina State, 12/14/11	6-48	.125
3. vs. Howard, 3/18/22	8-54	.148

Highest %age Allowed (Min. 24 FGM)	FGM-A	Pct
1. vs. UConn, 3/26/18	37-63	.587
2. vs. UConn, 2/11/19	37-65	.569
3. 2x, most recent vs. UConn, 12/28/08	35-62	.565

3-Point Field Goals

Made	3FGM
1. vs. Minnesota, 12/11/16	16
2. vs. Temple, 12/21/18	15
3. 2x, most recent, vs. App. State, 12/5/18	14

Attempts	3FGA
1. vs. Howard, 3/18/22	38
2. vs. Minnesota, 12/11/16	33
3. vs. Syracuse, 3/25/16	32

Percentage (Min. 10 3FGM)	3FGM-A	Pct
1. vs. ETSU, 11/22/18	11-16	.688
2. vs. Tennessee Tech, 3/21/24	12-19	.632
3. vs. Quinnipiac, 3/25/17	10-16	.625

Free Throws

Made	FTM
1. vs. Savannah State, 12/14/14	34
vs. Oregon State, 3/25/14	34
3. 3x, most recent, vs. Missouri, 1/10/16	32

Attempts	FTA
1. at Mississippi State, 1/6/13	50
2. vs. Savannah State, 12/28/13	48
3. 2x, most recent, vs. Charleston, 11/25/20	47

Percentage (Min. 26 FTM)	FTM-A	Pct
1. vs. Arkansas, 1/22/23	27-35	.818
2. vs. ETSU, 11/22/18	28-35	.800
vs. Hampton, 11/20/16	28-35	.800

Rebounding

Total	Rebs
1. vs. Arkansas, 1/22/23	74
2. vs. Clemson, 11/16/23	73
vs. Charleston, 11/25/20	73

Margin	Rebs	Margin
1. vs. Arkansas, 1/22/23	74-17	+57
2. vs. Hampton, 11/27/22	62-15	+47
3. vs. Clemson, 11/16/23	73-27	+46

Offensive	Off. Rebs
1. vs. Arkansas, 1/22/23	32
2. vs. Tennessee, 2/20/22	31
3. 2x, most recent, vs. Purdue, 11/30/24	30

Turnovers

Fewest	TOs
1. vs. Purdue, 11/30/24	4
at Tennessee, 2/2/12	4
2. 11x, most recent, vs. Penn State, 12/14/25	5

Most	TOs
1. at Wake Forest, 12/3/08	32
2. 3x, most recent, at Ole Miss, 2/25/16	29

Assists

1. at Kentucky, 2/25/24	30
vs. Clemson, 11/16/23	30
vs. Maryland, 11/12/23	30

Steals

1. at Alabama State, 11/11/18	22
2. 3x, most recent, vs. Alabama St., 11/10/17	21

Blocked Shots

1. vs. Presbyterian, 12/16/23	17*
vs. Appalachian State, 11/17/19	17*
3. 5x, most recent, vs. South Dak. St., 11/20/23	16

2025-26 BOX SCORES



Official Basketball Box Score - Final
Grand Canyon at South Carolina
 11/03/25 Colonial Life Arena, Columbia
 2025-26 Women's Basketball

Game Time: 7:00 PM
 Game Duration: 2:03
 Attendance: 15,801

Officials: Tommi Piria, Tiffany Bird, Gina Cantanzarri

Grand Canyon - 54

Record: 0-1

NO.	Name	Min	FG	3P	FT	Rebounds	Fouls	TP	AS	TO	ST	Blocks	BS	BA	+/		
1	Anisa Jeffries	F 29:58	5-10	0-3	1-1	2	3	5	3	11	1	1	0	0	0	-29	
11	Holly Griffiths	F 04:56	0-1	0-1	0-0	0	0	0	2	0	0	1	0	0	0	-6	
0	Chloe Mann	G 22:35	4-12	3-8	4-4	1	0	1	3	5	15	2	2	0	0	-24	
8	Sifa Joyeuse	G 17:45	2-9	1-6	1-2	0	4	4	2	3	6	0	1	0	1	-16	
20	Juliana LaMendola	G 18:38	1-5	0-4	0-0	1	1	2	5	2	2	2	2	0	0	-20	
54	Faith Carson	16:48	1-3	0-2	0-0	0	4	4	3	2	2	0	1	0	1	-21	
3	AleJah Douglas	26:19	4-10	3-6	5-6	1	2	3	2	4	16	0	2	0	0	1	-26
15	Favor Ayodele	10:04	0-1	0-0	0-0	2	1	3	3	1	0	0	0	0	1	1	-17
33	Ines Zounia	06:28	0-3	0-1	0-0	0	0	0	1	0	0	0	3	1	0	0	-13
6	Casey Valenti-Paea	10:08	0-4	0-1	0-0	0	1	1	0	0	0	0	1	1	0	2	-6
24	Norah Moo	17:17	0-1	0-0	1-2	2	0	2	0	1	1	0	0	0	0	0	-13
7	Karley Johnson	09:12	0-0	0-0	0-0	1	1	2	2	0	1	1	1	1	0	0	2
4	Diamond Wright	07:29	0-2	0-1	1-2	0	0	0	0	1	1	0	0	0	0	0	-8
22	Kaitlyn Elsholz	02:23	0-1	0-1	0-0	0	0	0	0	0	0	0	0	0	0	0	-1
Team						2	2	4	0	0	2						
Totals			17:62	7:34	13:17	12	19	31	26	21	54	6	17	3	3	6	-40

Major Fouls: NONE

South Carolina - 94

Record: 1-0

NO.	Name	Min	FG	3P	FT	Rebounds	Fouls	TP	AS	TO	ST	Blocks	BS	BA			
						OR	DR	OT									
8	Joyce Edwards	F 27:10	5-11	0-2	3-4	2	3	5	3	2	13	1	2	0	1	30	
11	Madina Okot	C 17:26	4-5	0-0	4-6	4	4	3	7	12	0	0	0	1	0	25	
00	Ta'Niya Latson	G 28:06	7-10	1-2	5-8	0	1	1	2	6	20	4	2	1	0	1	34
5	Tessa Johnson	G 32:31	8-13	3-6	0-0	1	4	5	1	2	19	3	1	1	1	0	38
25	Raven Johnson	G 25:48	4-6	3-5	0-0	0	8	8	2	0	11	7	1	3	0	0	23
1	Maddy McDaniel	07:41	1-2	1-1	0-0	0	0	0	2	1	3	2	0	0	0	1	15
44	Agot Makeer	19:06	1-3	1-2	2-2	0	2	2	4	2	5	2	3	0	3	0	8
30	Maryam Dauda	09:58	0-0	0-0	0-0	0	2	2	1	0	0	0	0	0	0	0	1
24	Ayla McDowell	17:29	3-5	0-1	3-4	1	1	2	2	4	9	0	2	1	0	0	10
15	Adhel Tac	14:45	1-2	0-0	0-1	1	5	6	1	2	2	0	0	0	0	1	16
Team						0			3			0					
Totals			34:57	9:19	17:25	5	33	38	21	26	94	11	6	6	3	40	

Major Fouls: NONE

	CLM	USC
Biggest lead	0 (1 st 10:00)	41 (4 th 2:19)
Best Scoring Run	5 (2 nd 3:25)	15 (1 st 0:32)
Lead Changes	0	
Times Tied	0	
Time with Lead	00:00	39:49

Points from	CLM	USC
Turnovers	10	22
Paint	18	40
Second Chance	15	14
Fast Breaks	2	32
Bench	20	19

Period by Period Scoring	1st	2nd	3rd	4th	TOT
CLM	10	21	16	7	54
USC	29	31	19	15	94

Shooting By Period	1st	2nd	3rd	4th	GM
FG	4-13	30.8%			
3P	1-7	14.3%			
FT	1-1	100%			
2nd FG	5-17	29.4%			
3P	4-13	30.8%			
3P	2-8	25.0%			
FT	7-10	70%			
4th FG	6-17	35.3%			
3P	2-8	25.0%			
FT	2-2	100%			
4th FG	2-15	13.3%			
3P	0-6	0.0%			
FT	3-4	75%			
GM FG	17:62	27.4%			
3P	7:34	20.6%			
FT	13:17	76.0%			

Dead Ball Rebounds: 3, 2



Official Basketball Box Score - Final
Bowling Green at South Carolina
 11/07/25 Colonial Life Arena, Columbia
 2025-26 Women's Basketball

Game Time: 7:00 PM
 Game Duration: 1:46
 Attendance: 16,549

Officials: Natasha Camy, Jeffrey Smith, Chris Saucido

Bowling Green - 47

Record: 1-1

NO.	Name	Min	FG	3P	FT	Reb	Obt	Fouls	TP	AS	TO	ST	Blocks	BS	BA		
11	Taya Ellis	F 17:00	0-5	0-0	0-0	2	2	4	2	0	0	1	2	2	0	1	-32
22	Lauren Gerken	F 15:32	1-9	1-7	0-0	1	0	1	3	0	3	0	0	1	0	-31	
3	Johnna Donahue	G 34:36	4-15	0-1	1-2	3	1	4	0	3	9	1	4	5	0	0	-56
10	Paige Kohler	G 35:42	3-15	1-5	0-0	0	0	0	3	2	7	5	1	0	0	1	-63
12	Ky Aira Miller	G 26:07	2-7	2-4	0-0	1	1	2	3	1	6	0	2	0	0	1	-52
8	Joniya Bland-Fitzpatrick	27:15	3-11	0-1	4-4	2	0	2	4	3	10	0	2	1	0	4	-45
2	Emily Sessel	16:09	1-4	1-4	0-0	1	1	2	3	0	3	2	1	2	0	1	-23
33	Kendal Moxey	04:12	0-0	0-0	0-0	0	0	0	0	0	0	0	0	0	1	0	-7
4	Jaedyn Cook	08:50	2-3	0-0	0-0	0	1	1	1	0	4	0	0	0	0	1	-7
20	Jasmine Fearnie	07:05	1-4	0-3	0-0	1	1	2	1	0	2	0	0	0	0	0	-9
0	Laila Harrison	05:10	0-0	0-0	0-0	0	0	0	0	0	0	0	0	0	0	0	-9
13	Sofia Moschen	02:16	1-1	1-1	0-0	0	0	0	0	0	3	0	0	0	0	0	-1
Team						6			1			7			0		
Totals			18:74	6:26	5:6	17	8	25	20	9	47	9	18	11	2	11	-67

Major Fouls: NONE

Dead Ball Rebounds: 3, 2

South Carolina - 114

Record: 2-0

NO.	Name	Min	FG	3P	FT	Rebounds	Fouls	TP	AS	TO	ST	Blocks	BS	BA			
8	Joyce Edwards	F 25:10	11-12	0-0	2-3	3	1	4	0	3	24	3	0	0	3	0	42
11	Madina Okot	C 21:36	6-9	0-0	1-1	4	7	11	0	2	13	2	0	1	4	1	48
00	Ta'Niya Latson	G 31:29	5-11	0-2	7-7	0	4	4	2	4	17	4	1	0	1	1	54
5	Tessa Johnson	G 26:59	6-11	2-5	0-0	2	5	7	2	1	14	3	5	0	0	0	44
25	Raven Johnson	G 23:00	4-7	1-2	2-2	5	5	2	1	11	11	2	3	0	0	0	42
44	Agot Makeer	15:45	4-6	1-2	3-5	1	2	3	0	3	12	0	2	1	1	0	25
30	Maryam Dauda	20:53	2-3	0-0	5-6	4	4	8	1	3	9	0	2	1	1	0	28
24	Ayla McDowell	22:47	3-5	2-3	3-4	1	2	3	1	2	11	1	2	2	0	0	36
15	Adhel Tac	12:21	1-2	0-0	1-2	1	1	2	1	3	2	0	1	1	0	1	16
Team						0			6			0			0		
Totals			42:66	6:14	24:30	16	37	53	9	20	114	26	14	9	11	2	67

Major Fouls: NONE

Dead Ball Rebounds: 4, 0

	BGU	USC
Biggest lead	2 (1 st 9:21)	68 (4 th 3:31)
Best Scoring Run	4 (3 rd 1:37)	16 (4 th 3:31)
Lead Changes	1	
Times Tied	1	
Time with Lead	00:19	37:59

Points from	BGU	USC
Turnovers	13	21
Paint	18	66
Second Chance	4	20
Fast Breaks	2	37
Bench	22	35

Period by Period Scoring	1st	2nd	3rd	4th	TOT
BGU	7	12	16	12	47
USC	27	28	31	28	114



Official Basketball Box Score - Final
Clemson at South Carolina
 11/11/25 Colonial Life Arena, Columbia
 2025-26 Women's Basketball

Game Time: 6:00 PM
 Game Duration: 1:36
 Attendance: 16,923

Officials: Katie Lukanich, Denise Brooks, Brandon Entine

Clemson - 37

Record: 2-1

NO.	Name		Min	FG	3P	FT	Rebounds	Fouls	TP	AS	TO	ST	Blocks		+/-			
				MA	MA	MA	OR	DR	TT				BS	BA				
25	Demeara Hinds	F	17:54	3-6	0-0	2-2	4	4	8	4	2	8	1	2	0	1	-10	
32	Raven Thompson	F	20:15	0-1	0-0	0-0	0	3	3	2	1	0	2	1	0	0	-17	
10	Taylor Johnson-Matthews	G	25:58	3-12	1-6	2-2	1	3	4	0	1	9	0	2	1	0	3	-22
12	Mia Moore	G	25:48	2-10	1-3	0-0	0	4	4	1	1	5	0	1	0	0	3	-29
14	Rachael Rose	G	29:15	3-7	0-4	0-0	0	1	1	2	2	6	1	0	0	0	1	-17
21	Hadley Periman		35:07	1-5	1-5	0-0	1	1	2	2	3	3	1	4	1	0	0	-20
11	Rusne Augustinate		24:31	1-12	1-8	0-0	0	4	4	0	3	2	0	0	0	0	2	-3
5	Hannah Kohn		14:57	1-7	1-7	0-0	0	0	0	1	0	3	0	1	0	0	0	-11
31	Morgan Lee		02:27	0-0	0-0	0-0	0	0	0	2	0	0	0	0	0	0	0	-5
0	Holland Harris		03:50	0-1	0-0	0-0	0	0	0	0	0	0	0	0	0	0	0	-6
Team							4	1	5	0	0	2						
Totals				14-61	5-33	4-4	10	21	31	14	10	37	9	10	5	1	0	-28

2025-26 BOX SCORES



Official Basketball Box Score - Final
Winthrop at South Carolina
 11/25/25 Colonial Life Arena, Columbia
 2025-26 Women's Basketball

Game Time: 7:00 PM
 Game Duration: 1:47
 Attendance: 15,787

Officials: Gina Cross, Charles Watson, Deanna Jackson

Winthrop - 56

Record: 2-2

NO.	Name	Min	FG	3P	FT	Rebounds	Fouls	TP	AS	TO	ST	Blocks	BB	
			M-A	M-A	M-A	OR DR TOT	PF	FD				BS	BA	
11	Naomi Wilson	F 17:55	3-4	0-0	1-2	2 2 4	4	3	7	0	2	0	0	-20
3	Madison Ruff	G 13:43	4-10	0-0	2-3	1 2 3	2	6	10	0	1	0	2	-3
13	Mya Pierfax	G 33:09	6-12	4-8	0-0	1 0 1	0	0	16	2	4	1	0	-46
15	Amourie Porter	G 28:39	3-14	0-2	4-4	3 1 4	3	2	10	2	1	0	0	-45
22	Cori Lard	G 25:29	1-8	0-0	0-0	1 2 3	5	0	5	1	2	0	0	-29
7	Riyah Wilson	30:22	2-7	2-5	0-0	2 1 3	1	1	6	1	3	0	0	-47
25	Tocarra Johnson	15:07	0-4	0-0	0-0	0 0 0	4	0	0	0	1	0	0	-19
21	Persais Williams	21:25	1-5	0-0	0-0	2 0 2	1	1	2	2	0	0	0	-28
5	Mya Hamilton	14:11	0-2	0-2	0-0	0 0 0	0	0	0	0	0	0	0	-13
Team						3 1 4	0	0	1	2				
Totals			21-66	7-21	7-9	15 9 24	20	13	56	8	15	2	0	7 -50

Major Fouls: NONE

Shooting By Period		
1 st FG%	5-16	31.3%
3PT%	2-6	33.3%
FT%	3-3	100%
2 nd FG%	4-20	20.0%
3PT%	2-5	40.0%
FT%	2-2	100%
3 rd FG%	8-18	44.4%
3PT%	1-4	25.0%
FT%	1-2	50%
4 th FG%	4-12	33.3%
3PT%	2-6	33.3%
FT%	1-2	50%
GM FG%	21-66	31.8%
3PT%	7-21	33.3%
FT%	7-9	77.8%

Dead Ball Rebounds: 4-0

South Carolina - 106

Record: 5-0

NO.	Name	Min	FG	3P	FT	Rebounds	Fouls	TP	AS	TO	ST	Blocks	BS	+/			
			M-A	M-A	M-A	OR	DR	TOT	PF	FD		BS	BA				
8	Joyce Edwards	F 27:33	9-13	0-0	4-6	3	2	5	1	5	22	1	2	1	0	40	
11	Madina Okot	C 25:16	10-12	0-0	3-4	6	5	11	2	2	23	3	2	1	3	36	
00	Ta'Niya Latson	G 25:03	8-11	2-4	6-8	1	4	5	1	5	24	4	2	1	0	31	
5	Tessa Johnson	G 29:21	3-8	3-7	0-0	1	0	1	1	9	1	0	1	0	1	28	
25	Raven Johnson	G 21:20	1-4	0-3	1-2	0	4	4	2	2	3	10	1	0	1	33	
30	Maryam Dauda	11:43	0-2	0-1	0-2	0	1	1	2	2	0	1	1	0	1	7	7
44	Agot Makeer	21:17	6-10	0-1	0-0	3	4	7	2	1	12	4	0	2	0	23	7
24	Ayla McDowell	25:43	3-4	0-1	1-1	2	2	4	0	0	1	7	1	0	1	0	38
15	Adhel Tac	12:44	3-3	0-0	0-0	1	4	5	2	0	6	0	0	0	1	14	14
Team						2		1	3	0	0	1					
Totals			43-67	5-17	15-24	18	28	46	13	20	106	25	9	6	7	0	50

Major Fouls: NONE

Shooting By Period		
1 st FG%	10-13	76.9%
3PT%	0-1	0.0%
FT%	8-8	100%
2 nd FG%	13-17	76.5%
3PT%	3-5	60.0%
FT%	4-8	50%
3 rd FG%	10-18	55.6%
3PT%	2-7	28.6%
FT%	2-4	50%
4 th FG%	10-19	52.6%
3PT%	0-4	0.0%
FT%	1-4	25%
GM FG%	43-67	64.2%
3PT%	5-17	29.4%
FT%	15-24	62.5%

Dead Ball Rebounds: 6-0

	WIN	USC
Biggest lead	2 (1 st 9:33)	52 (4 th 1:09)
Best Scoring Run	3 (1 st 3:40)	12 (2 nd 5:24)
Lead Changes	1	
Times Tied	1	
Time with Lead	00:08	38:56

Points from	WIN	USC
Turnovers	8	26
Paint	20	70
Second Chance	17	27
Fast Breaks	7	33
Bench	8	25

Period by Period Scoring	1st	2nd	3rd	4th	TOT
WIN	15	12	18	11	56
USC	28	33	24	21	106



Official Basketball Box Score - Final
Queens (NC) at South Carolina
 11/23/25 Colonial Life Arena, Columbia
 2025-26 Women's Basketball

Game Time: 2:00 PM
 Game Duration: 1:51
 Attendance: 15,222

Officials: Maggie Terman, Adrienne Gilmore, Kevin Fahy

Queens (NC) - 49

Record: 3-3

NO.	Name	Min	FG	3P	FT	Rebounds	Fouls	TP	AS	TO	ST	Blocks	+/-	
			M-A	M-A	M-A	OR DR TOT	PF	FD				BS BA		
5	Brenae Jones-Grant	F 25:05	3-11	1-4	3-4	4 3 7	3	2	10	1	2	0	0	-34
21	Hannah Hicks	F 21:08	0-4	0-0	1-2	1 0 1	1	4	1	0	0	0	0	-46
3	Jermamy Mapp	G 25:41	3-13	1-2	2-2	0 2 2	1	1	9	2	4	1	0	-60
10	Ana Barreto	G 22:49	2-12	2-6	0-0	0 1 1	2	0	6	2	2	2	0	-44
22	Dayana Colvin	G 20:56	1-6	1-2	2-2	0 2 2	2	1	5	3	5	0	0	-38
8	Tamar Kogelovich	10:58	2-3	1-2	0-0	1 0 1	5	0	5	1	1	0	0	-21
31	Bresh Franks	18:38	1-2	0-0	0-0	2 1 3	4	1	2	1	1	0	1	-26
6	Magda Freire	09:54	1-3	0-2	0-0	0 0 0	2	0	2	0	3	1	0	-25
11	Imani Morris	06:53	0-2	0-0	0-0	0 0 0	5	2	0	1	0	0	0	-18
9	Kelley Hutcherson	23:05	1-6	1-3	0-0	0 0 0	0	0	1	3	1	0	1	-32
1	Alyssa Lewis	14:52	2-8	2-7	0-0	0 2 2	0	0	6	0	1	0	0	-16
Team						4 2 6	0	0	1					
Totals			16-70	9-28	8-10	12 13 25	25	12	49	11	21	5	1	12 -72

Major Fouls: NONE

Shooting By Period		
1 st FG%	1-15	6.7%
3PT%	1-3	33.3%
FT%	2-2	100%
2 nd FG%	5-17	29.4%
3PT%	3-9	33.3%
FT%	1-2	50%
3 rd FG%	5-18	27.8%
3PT%	4-5	80.0%
FT%	2-2	100%
4 th FG%	5-20	25.0%
3PT%	1-11	9.1%
FT%	3-4	75%
GM FG%	16-70	22.9%
3PT%	9-28	32.1%
FT%	8-10	80.0%

Dead Ball Rebounds: 3-2

South Carolina - 121

Record: 6-0

NO.	Name	Min	FG	3P	FT	Rebounds	Fouls	TP	AS	TO	ST	Blocks	BS	BA	
			M-A	M-A	M-A	OR DR TOT	PF	FD							
8	Joyce Edwards	F 25:10	9-11	0-0	7-9	2 2 4	3	8	25	3	1	2	2	46	
11	Madina Okot	C 19:16	5-8	0-1	4-4	2 10 12	1	2	14	0	0	2	3	41	
00	Ta'Niya Latson	G 27:40	9-11	2-2	4-5	0 2 2	1	3	24	5	2	3	1	50	
5	Tessa Johnson	G 21:21	5-8	3-5	0-0	1 1 0	0	13	5	1	0	0	0	36	
25	Raven Johnson	G 22:09	5-6	2-2	0-0	0 2 2	2	0	12	7	2	3	2	39	
44	Agot Makeer	19:49	1-5	0-4	2-2	0 3 3	1	1	4	1	1	1	0	39	
1	Maddy McDaniel	12:16	1-2	0-0	0-0	0 1 1	1	2	3	0	1	0	0	18	
24	Ayla McDowell	16:45	1-4	1-4	4-4	2 3 5	1	4	7	1	0	1	0	34	
30	Maryam Dauda	16:45	4-7	0-2	1-2	0 5 5	2	1	9	0	2	0	1	0	34
15	Adhel Tac	18:49	3-3	0-0	5-8	1 9 10	0	4	11	2	1	1	0	23	
Team						3 3 6	0	0	0	0	0				

Major Fouls: NONE

Shooting By Period		
1 st FG%	10-16	62.5%
3PT%	0-2	0.0%
FT%	9-10	90%
2 nd FG%	10-13	76.9%
3PT%	3-5	60.0%
FT%	6-8	75%
3 rd FG%	13-22	59.1%
3PT%	3-9	33.3%
FT%	1-2	50%
4 th FG%	10-14	71.4%
3PT%	2-4	50.0%
FT%	11-14	78.6%
GM FG%	43-65	66.2%
3PT%	8-20	40.0%
FT%	27-34	79.4%

Dead Ball Rebounds: 4-0

	QUE	USC
Biggest lead	0 (1 st 10:00)	74 (4 th 1:12)
Best Scoring Run	6 (4 th 9:27)	28 (2 nd 8:50)
Lead Changes	0	
Times Tied	2	
Time with Lead	00:00	38:55

Points from	QUE	USC
Turnovers	12	22
Paint	12	66
Second Chance	13	11
Fast Breaks	13	56
Bench	18	33

Period by Period Scoring	1st	2nd	3rd	4th	TOT
QUE	5	14	16	14	49
USC	29	29	30	33	121



Official Basketball Box Score - Final
South Carolina at Duke
 11/20/25 Michelé ULTRA Arena, Las Vegas
 2025-26 Women's Basketball

Game Time: 4:30 PM
 Game Duration: 1:56
 Attendance: 2,380

Officials: Tiffany Bird, Fatou Cissoko-Stephens, Ray Gubeyan

South Carolina - 83

Record: 7-0

NO.	Name	Min	FG	3P	FT	Rebounds	Fouls	TP	AS	TO	ST	Blocks	BS	+/			
			M-A	M-A	M-A	OR	DR	TOT	PF	FD							
8	Joyce Edwards	F 31:51	9-18	0-1	4-5	1	5	6	1	3	22	6	1	3	0	10	
11	Madina Okot	C 30:32	11-18	0-1	1-2	5	8	13	1	2	23	2	3	4	2	14	
00	Ta'Niya Latson	G 25:57	6-13	0-2	0-0	0	0	1	1	2	12	2	0	0	1	5	
5	Tessa Johnson	G 31:32	2-6	1-2	0-0	0	1	1	1	1	5	0	0	1	1	0	18
25	Raven Johnson	G 25:45	3-8	0-2	4-5	3	2	5	3	3	10	6	1	0	0	0	18
15	Adhel Tac	07:02	0-0	0-0	2-2	1	0	1	1	1	2	0	1	0	0	0	-3
1	Maddy McDaniel	19:21	2-3	0-1	1-2	0	1	1	0	2	5	1	0	0	0	2	0
30	Maryam Dauda	10:35	0-1	0-0	0-0	2	4	6	3	0	0	0	0	0	0	0	13
44	Agot Makeke	16:24	2-6	0-1	0-0	1	3	4	1	0	4	1	0	0	0	0	9
24	Ayla McDowell	01:31	0-1	0-0	0-0	0	0	0	0	0	0	0	0	0	0	0	-1
Team						2	3	5	0	0	0	0	0	0	0	0	0

2025-26 BOX SCORES



Official Basketball Box Score - Final
South Carolina at Louisville
 12/04/25 KYFC Yum! Center, Louisville, KY
 2025-26 Women's Basketball

Game Time: 7:02 PM
 Game Duration: 1:56
 Attendance: 10,012

Officials: Maj Forsberg, Pulant Spurlock, Billy Smith

South Carolina - 79

Record: 8-1

NO.	Name	Min	FG	3P	FT	Rebounds	Fouls	TP	AS	TO	ST	Blocks	+/
M-A	M-A	M-A	M-A	M-A	OR DR TOT	PF FD						BS BA	
8	Joyce Edwards	F 35:17	5-12	1-1	1-2	1 4 5	1 3	12	0	3	3	0 0	-1
11	Madina Okot	C 32:38	10-16	0-0	3-7	3 10 13	2 4	23	2	4	0	0 0	1
00	Ta'Niya Latson	G 38:19	3-9	1-4	2-2	0 1 1	2 1	9	5	1	0 0	1 1	
5	Tessa Johnson	G 38:10	7-13	4-7	2-2	2 5 7	1 4	20	3	1	0	0 4	
25	Raven Johnson	G 38:18	4-7	1-2	2-2	1 3 4	2 2	11	8	1	0	1 0	1
1	Maddy McDaniel	05:13	0-1	0-1	0-0	0 1 1	0 1	0	0	0	1	0 0	0
15	Adhel Tac	03:23	0-1	0-0	1-2	1 0 1	1 1	1	0	0	0	0 0	2
24	Ayla McDowell	08:42	1-2	1-1	0-0	2 0 2	1 0	3	1	1	0	0 0	2
Team						0 0 0	0	0	1				
Totals			30-61	8-16	11-17	10 24 34	10 16	79	19	12	4	1 1	2

Major Fouls: NONE

Shooting By Period	FG%	3P%	FT%
1 st FG%	12-19 63.2%	3P%	2-4 50.0%
FT%	1-1 100%	2 nd FG%	6-11 54.5%
3 rd FG%	6-14 42.9%	FT%	4-6 66.7%
4 th FG%	6-17 35.3%	3P%	1-3 33.3%
FT%	3-6 50%	GM FG%	30-61 49.2%
3P%	8-16 50.0%	FT%	11-17 64.7%

Dead Ball Rebounds: 4, 0

Louisville - 77

Record: 7-3

NO.	Name	Min	FG	3P	FT	Rebounds	Fouls	TP	AS	TO	ST	Blocks	+/
M-A	M-A	M-A	M-A	M-A	OR DR TOT	PF FD						BS BA	
0	Laura Ziegler	F 25:35	0-2	0-2	0-0	1 3 4	2 0	0	1	4	0	0 0	-3
4	Mackeny Randolph	F 12:05	1-2	0-0	0-0	2 0 2	1 0	2	0	0	0	0 0	-11
9	Aranya Hardy	F 22:49	3-4	0-0	0-0	2 3 5	4 1	6	0	0	1 0	1 1	
11	Elif Istanbuloglu	F 34:06	6-10	2-6	1-2	7 9 2	4 15	11	1	0	0 0	1 1	
22	Tajanna Roberts	G 31:45	8-18	4-8	0-0	1 3 4	2 0	20	3	2	0	0 1	-3
1	Reyna Scott	37:14	6-13	1-2	2-2	1 2 3	2 2	15	4	3	1	0 0	-3
2	Imari Berry	17:04	2-7	1-3	2-2	0 4 4	0 1	7	2	1	1	0 0	2
23	Skylar Jones	19:22	5-9	1-2	1-4	1 1 2	3 2	12	0	0	1	0 0	8
Team						1 0 1	0	0	1				
Totals			31-65	9-23	6-10	11 23 34	16 10	77	11	12	3	1 1	-2

Major Fouls: NONE

Shooting By Period	FG%	3P%	FT%
1 st FG%	12-19 63.2%	3P%	1-5 20.0%
FT%	0-0 0%	2 nd FG%	5-12 41.7%
3 rd FG%	3-6 50.0%	FT%	1-2 50%
4 th FG%	9-16 56.3%	3P%	2-4 50.0%
FT%	3-6 50%	GM FG%	31-65 47.7%
3P%	9-23 39.1%	FT%	6-10 60.0%

Dead Ball Rebounds: 3, 0

	SC	LOU
Biggest lead	11 (3 rd 8:59)	5 (4 th 4:23)
Best Scoring Run	8 (2 nd 9:19)	9 (4 th 8:55)
Lead Changes	13	
Times Tied	6	
Time with Lead	25:45	11:03

Points from	SC	LOU
Turnovers	11	13
Paint	36	30
Second Chance	6	10
Fast Breaks	0	6
Bench	4	34

Period by Period Scoring	1st	2nd	3rd	4th	TOT
SC	27	18	18	16	79
LOU	25	14	23	15	77



Official Basketball Box Score - Final
N.C. Central at South Carolina
 12/07/25 Colonial Life Arena, Columbia
 2025-26 Women's Basketball

Game Time: 12:00 PM
 Game Duration: 1:59
 Attendance: 15,877

Officials: Brian Garland, Cori Chambers, Kyle Bacon

N.C. Central - 42

Record: 1-8

NO.	Name	Min	FG	3P	FT	Rebounds	Fouls	TP	AS	TO	ST	Blocks	+/
M-A	M-A	M-A	M-A	M-A	OR DR TOT	PF FD						BS BA	
15	Dianna Blake	F 28:14	1-2	0-0	0-0	1 4 5	4 1	2	0	3	1	0 0	-37
24	Aniya Finger	F 20:30	4-13	1-3	0-0	0 1 1	5 0	9	0	0	0	0 0	-32
2	Victoria Morris	G 21:36	3-8	0-0	0-0	2 2 4	1 2	6	1	4	0	1 2	-26
4	Tierney Coleman	G 20:13	5-8	4-6	0-1	3 1 4	2 2	14	1	3	2	0 1	-33
23	Najah Lane	G 35:12	1-6	0-1	1-2	0 2 2	0 2	3	6	9	0	0 1	-58
5	Nia Young	12:50	0-3	0-2	1-2	0 0 0	4 1	1	1	4	0	0 0	-21
22	Madiguenne Pene	16:00	0-3	0-0	0-0	2 0 2	0 0	0	1	1	0 1	1	-19
10	Shakiria Foster	18:07	0-2	0-0	0-0	1 2 3	2 0	0	0	6	0	0 0	-31
0	Aysia Hinton	06:22	1-2	1-2	0-0	0 0 0	0 1	3	0	0	0	0 0	-9
11	Amaya Harris	09:13	0-1	0-1	2-2	0 0 0	2 1	2	0	3	0	0 0	-28
12	Aaliyah Grant	01:12	0-0	0-0	0-0	0 0 0	0 0	0	0	0	0	0 0	-4
20	Natalie Jasper	08:22	1-5	0-2	0-0	0 0 0	0 4	2	0	0	1	2	-16
13	Kendall Alexander	02:09	0-1	0-0	0-0	0 0 0	0 0	0	0	0	0	0 1	-6
Team						6 1 7	0	0	3				
Totals			16-54	6-19	4-7	15 13 28	24 10	42	9	36	4	2 10	-64

Major Fouls: NONE

Shooting By Period	FG%	3P%	FT%
1 st FG%	5-15 33.3%	3P%	3-7 42.9%
FT%	1-2 50%	2 nd FG%	5-8 62.5%
3 rd FG%	1-3 33.3%	FT%	0-1 0%
4 th FG%	1-16 6.3%	3P%	0-4 0.0%
FT%	0-0 0%	GM FG%	16-54 29.6%
3P%	6-19 31.6%	FT%	4-7 57.1%

Dead Ball Rebounds: 2, 0

South Carolina - 106

Record: 9-1

NO.	Name	Min	FG	3P	FT	Rebounds	Fouls	TP	AS	TO	ST	Blocks	+/
M-A	M-A	M-A	M-A	M-A	OR DR TOT	PF FD						BS BA	
8	Joyce Edwards	F 33:38	9-11	0-0	7-10	4 6 10	3 7	25	6	7	4	3 1	57
15	Adhel Tac	F 21:59	0-3	0-0	2-2	1 2 3	1 1	2	0	1	0	1 1	31
11	Madina Okot	C 10:53	5-9	0-0	0-1	7 2 9	0 1	10	1	2	1	1 0	11
00	Ta'Niya Latson	G 34:39	11-18	5-6	5-5	1 3 4	2 5	32	2	0	3	1 0	54
25	Raven Johnson	G 29:24	2-9	1-5	2-2	1 2 3	0 1	7	5	3	6	1 0	46
1	Maddy McDaniel	24:16	0-2	0-1	8-10	1 2 3	2 5	8	3	0	2	0 0	38
24	Ayla McDowell	26:56	5-9	5-7	1-2	0 2 2	2 1	16	0	3	0	0 0	52
30	Maryam Dauda	18:15	2-6	0-2	2-2	3 4 7	0 3	6	2	0	0	3 0	31
Team						4 0 4	0	0	1				
Totals			34-67	11-21	27-34	22 23 45	10 24	106	19	17	16	10	2 64

Major Fouls: NONE

Shooting By Period	FG%	3P%	FT%
1 st FG%	8-16 50.0%	3P%	1-3 33.3%
FT%	9-10 90%	2 nd FG%	7-21 33.3%
3 rd FG%	1-7 14.3%	FT%	5-7 71.4%
4 th FG%	9-15 60.0%	3P%	4-5 80.0%
FT%	10-12 83.3%	GM FG%	34-67 50.7%
3P%	11-21 52.4%	FT%	27-34 79.4%

Dead Ball Rebounds: 5, 1

	NCC	USC
Biggest lead	3 (1 st 6:57)	64 (4 th 0:37)
Best Scoring Run	7 (4 th 4:32)	30 (3 rd 2:13)
Lead Changes	4	
Times Tied	1	
Time with Lead	01:56	37:17

Points from	NCC	USC
Turnovers	9	42
Paint	18	42
Second Chance	2	20
Fast Breaks	12	38
Bench	8	30

Period by Period Scoring	1st	2nd	3rd	4th	TOT
NCC	14	11	2	15	42
USC	26	20	28	32	106



Official Basketball Box Score - Final
Penn St. at South Carolina
 12/14/25 Colonial Life Arena, Columbia
 2025-26 Women's Basketball

Game Time: 3:30 PM
 Game Duration: 1:52
 Attendance: 15,801

Officials: Natasha Camy, Kevin Pethel, Kristen Bel

Penn St. - 55

Record: 6-4

NO.	Name	Min	FG	3P	FT	Rebounds	Fouls	TP	AS	TO	ST	Blocks	+/
M-A	M-A	M-A	M-A	M-A	OR DR TOT	PF FD						BS BA	
44	Gracie Merkle	C 23:43	4-6	0-0	1-2	5 4 9	5 1	9	1	0	0	0 1	-31
3	Moriah Murray	G 36:53	1-11	1-9	0-0	0 5 5	1 0	3	2	2	0	0 0	-38
19	Tea Cleante	G 28:27	1-5	1-4	0-0	2 1 3	2 0	3	1	4	2	1 0	-25
23	Kiyomi McMiller	G 34:40	9-27	2-6	2-4	2 4 6	3 3	22	3	8	1	0 1	-29
24	Shayla Smith	G 24:09	6-13	0-3	1-4	2 7 9	1 4	13	0	4	0	0 2	-35
14	Amiya Evans	F 17:15	1-4	0-0	0-0	4 1 5	1 0	2	1	1	0	1 1	-11
10	Victoria Santana	04:29	1-2	1-2	0-0	1 1 2	0 3	0	2	0	0	0 0	-10
2	Shaelyn Steele	13:22	0-3	0-2	0-0	3 2 5	0 0	0	1	2	0	0 0	-9
8	Nyla McFadden	06:13	0-0	0-0	0-0	0 3 3	1 1	0	0	1	0	0 0	-7
7	Viktoria Ranasavljevic	01:40	0-0	0-0	0-0	0 0 0	0 0	0	1	0	0	0 0	-2
25	Rachael Okokoh	09:10	0-2	0-0	0-0	2 0 2	4 1	0	1	1	0	0 0	-3
Team						2 1 3	0	0	0				
Totals			23-73	5-26	4-10	22 29 51	20 10	55	10	26	3	2 5	-40

Major Fouls: NONE

Shooting By Period	FG%	3P%	FT%
1 st FG%	6-15 40.0%	3P%	1-6 16.7%
FT%	1-1 100%	2 nd FG%	9-22 40.9%
3 rd FG%	3-14 21.4%	FT%	1-4 25%
4 th FG%	5-22 22.7%	3P%	1-3 33.3%
FT%	2-3 66.7%	GM FG%	23-73 31.5%
3P%	5-26 19.2%	FT%	4-10 40.0%

Dead Ball Rebounds: 4, 0

South Carolina - 95

Record: 10-1

PLAYER GAME-BY-GAME AND CAREER STATS

#00 LATSON, Ta'Niya

Opponent	Date	GS	MIN	Total		3-Pointers		Free throws		Rebounds												
				FG-FGA	PCT	3FG-3FGA	PCT	FT-FTA	PCT	OFF	DEF	TOT	AVG	PF	A	TO	BLK	STL	PTS	AVG		
Grand Canyon	11/03/2025	*	28:06	7-10	.700	1-2	.500	5-8	.625	0	1	1	1.0	2	4	2	0	1	20	20.0		
Bowling Green	11/07/2025	*	31:29	5-11	.455	0-2	.000	7-7	1.000	0	4	4	2.5	2	4	1	1	0	17	18.5		
Clemson	11/11/2025	*	34:23	4-8	.500	1-1	1.000	3-4	.750	0	8	8	4.3	0	3	4	2	0	12	16.3		
vs Southern California	11/15/2025	*	28:22	6-14	.429	0-0	.000	0-0	.000	2	2	4	4.3	3	2	1	0	1	12	15.3		
Winthrop	11/19/2025	*	25:03	8-11	.727	2-4	.500	6-9	.667	1	4	5	4.4	1	4	2	0	1	24	17.0		
Queens (NC)	11/23/2025	*	27:40	9-11	.818	2-2	1.000	4-5	.800	0	2	2	4.0	1	5	2	1	3	24	18.2		
vs Duke	11/26/2025	*	25:57	6-13	.462	0-2	.000	0-0	.000	0	1	1	3.6	2	2	1	0	0	12	17.3		
vs Texas	11/27/2025	*	31:47	4-12	.333	1-1	1.000	7-8	.875	4	0	4	3.6	1	2	3	0	2	16	17.1		
at Louisville	12/04/2025	*	38:19	3-9	.333	1-4	.250	2-2	1.000	0	1	1	3.3	2	5	1	0	0	9	16.2		
N.C. Central	12/07/2025	*	34:39	11-18	.611	5-6	.833	5-5	1.000	1	3	4	3.4	2	2	0	1	3	32	17.8		
Penn St.	12/14/2025	*	35:16	5-14	.357	1-7	.143	7-7	1.000	0	6	6	3.6	1	8	1	1	4	18	17.8		
Totals			11 341:02	68-131	.519	14-31	.452	46-55	.836	8	32	40	3.6	17	41	18	6	15	196	17.8		

Player Averages

Games Played	Minutes/ game	Points/ game	FG Pct	3FG Pct	FT Pct	Rebounds/ game	Assists/ game	Turnovers/ game	Assist/Turnover ratio	Steals/ game	Blocks/ game
11	31.0	17.8	51.9	45.2	83.6	3.6	3.7	1.6	2.3	1.4	0.5

LATSON, Ta'niya

				Field Goals		3-Point		F-Throws		Rebounds											Scoring	
SEASON	TEAM	GP-GS	MIN/AVG	FG-FGA	FG%	3FG-3FGA	3FG%	FT-FTA	FT%	OFF	DEF	TOT	AVG	PF-FO	A	TO	BLK	STL	PTS	AVG	PTS	AVG
2022-23	FSU	31-31	913/29.5	225-494	.455	38-105	.362	171-199	.859	40	99	139	4.5	61-2	90	82	21	51	659	21.3		
2023-24	FSU	33-33	1023/31.0	258-589	.438	27-100	.270	162-190	.853	18	119	137	4.2	53-3	137	100	15	50	705	21.4		
2024-25	FSU	29-29	874/30.2	255-565	.451	37-108	.343	184-225	.818	33	100	133	4.6	52-2	134	89	14	63	731	25.2		
2025-26	SC	11-11	341/31.0	68-131	.519	14-31	.452	46-55	.836	8	32	40	3.6	17-0	41	18	6	15	196	17.8		
TOTAL FOR SC		11-11	341/31.0	68-131	.519	14-31	.452	46-55	.836	8	32	40	3.6	17-0	41	18	6	15	196	17.8		
TOTAL		104-104	3151/30.3	806-1779	.453	116-344	.337	563-669	.842	99	350	449	4.3	183-7	402	289	56	179	2291	22.0		

#1 MCDANIEL, Maddy

Opponent	Date	GS	MIN	Total		3-Pointers		Free throws		Rebounds												
				FG-FGA	PCT	3FG-3FGA	PCT	FT-FTA	PCT	OFF	DEF	TOT	AVG	PF	A	TO	BLK	STL	PTS	AVG		
Grand Canyon	11/03/2025		07:41	1-2	.500	1-1	1.000	0-0	.000	0	0	0	0.0	2	2	0	0	0	3	3.0		
Queens (NC)	11/23/2025		12:16	1-2	.500	0-0	.000	0-0	.000	0	1	1	0.5	1	3	0	0	1	2	2.5		
vs Duke	11/26/2025		19:21	2-3	.667	0-1	.000	1-2	.500	0	1	1	0.7	0	1	0	0	1	5	3.3		
vs Texas	11/27/2025		13:00	0-2	.000	0-1	.000	0-0	.000	0	0	0	0.5	0	2	0	0	0	0	2.5		
at Louisville	12/04/2025		05:13	0-1	.000	0-1	.000	0-0	.000	0	1	1	0.6	0	0	0	0	1	0	2.0		
N.C. Central	12/07/2025		24:16	0-2	.000	0-1	.000	8-10	.800	1	2	3	1.0	2	3	0	0	2	8	3.0		
Penn St.	12/14/2025		21:27	3-6	.500	2-3	.667	1-3	.333	1	3	4	1.4	2	2	1	0	1	9	3.9		
Totals			0 103:14	7-18	.389	3-8	.375	10-15	.667	2	8	10	1.4	7	13	1	0	6	27	3.9		

Player Averages

Games Played	Minutes/ game	Points/ game	FG Pct	3FG Pct	FT Pct	Rebounds/ game	Assists/ game	Turnovers/ game	Assist/Turnover ratio	Steals/ game	Blocks/ game
7	14.7	3.9	38.9	37.5	66.7	1.4	1.9	0.1	13.0	0.9	0.0

MCDANIEL, Maddy

				Field Goals		3-Point		F-Throws		Rebounds											Scoring	
SEASON	TEAM	GP-GS	MIN/AVG	FG-FGA	FG%	3FG-3FGA	3FG%	FT-FTA	FT%	OFF	DEF	TOT	AVG	PF-FO	A	TO	BLK	STL	PTS	AVG	PTS	AVG
2024-25	SC	30-0	329/11.0	34-68	.500	3-13	.231	22-32	.688	2	23	25	0.8	18-0	51	17	1	21	93	3.1		
2025-26	SC	7-0	103/14.7	7-18	.389	3-8	.375	10-15	.667	2	8	10	1.4	7-0	13	1	0	6	27	3.9		
TOTAL		37-0	432/11.7	41-86	.477	6-21	.286	32-47	.681	4	31	35	0.9	25-0	64	18	1	27	120	3.2		

PLAYER GAME-BY-GAME AND CAREER STATS

#5 JOHNSON, Tessa

Opponent	Date	GS	MIN	Total		3-Pointers		Free throws		Rebounds				PF	A	TO	BLK	STL	PTS	AVG
				FG-FGA	PCT	3FG-3FGA	PCT	FT-FTA	PCT	OFF	DEF	TOT	AVG							
Grand Canyon	11/03/2025	*	32:31	8-13	.615	3-6	.500	0-0	.000	1	4	5	5.0	1	3	1	1	1	19	19.0
Bowling Green	11/07/2025	*	26:59	6-11	.545	2-5	.400	0-0	.000	2	5	7	6.0	2	3	5	0	0	14	16.5
Clemson	11/11/2025	*	35:15	5-8	.625	2-4	.500	1-1	1.000	0	2	2	4.7	0	3	1	1	0	13	15.3
vs Southern California	11/15/2025	*	36:34	4-11	.364	2-4	.500	4-4	1.000	1	3	4	4.5	2	5	3	0	1	14	15.0
Winthrop	11/19/2025	*	29:21	3-8	.375	3-7	.429	0-0	.000	0	1	1	3.8	1	1	0	1	0	9	13.8
Queens (NC)	11/23/2025	*	21:21	5-8	.625	3-5	.600	0-0	.000	0	1	1	3.3	0	5	1	0	0	13	13.7
vs Duke	11/26/2025	*	31:02	2-6	.333	1-2	.500	0-0	.000	0	1	1	3.0	1	0	0	1	1	5	12.4
vs Texas	11/27/2025	*	36:43	5-10	.500	1-3	.333	0-0	.000	0	0	0	2.6	3	3	2	0	0	11	12.3
at Louisville	12/04/2025	*	38:10	7-13	.538	4-7	.571	2-2	1.000	2	5	7	3.1	1	3	1	0	0	20	13.1
Penn St.	12/14/2025	*	25:41	6-15	.400	1-5	.200	2-4	.500	1	5	6	3.4	0	1	1	0	1	15	13.3
Totals			10 313:37	51-103	.495	22-48	.458	9-11	.818	7	27	34	3.4	11	27	15	4	4	133	13.3

Player Averages

Games Played	Minutes/game	Points/game	FG Pct	3FG Pct	FT Pct	Rebounds/game	Assists/game	Turnovers/game	Assist/Turnover ratio	Steals/game	Blocks/game
10	31.4	13.3	49.5	45.8	81.8	3.4	2.7	1.5	1.8	0.4	0.4

JOHNSON, Tessa

				Field Goals		3-Point		F-Throws		Rebounds										Scoring	
SEASON	TEAM	GP-GS	MIN/AVG	FG-FGA	FG%	3FG-3FGA	3FG%	FT-FTA	FT%	OFF	DEF	TOT	AVG	PF-FO	A	TO	BLK	STL	PTS	AVG	
2023-24	SC	35-2	625/17.9	76-170	.447	35-81	.432	44-51	.863	11	50	61	1.7	24-0	40	32	3	24	231	6.6	
2024-25	SC	37-0	783/21.2	108-228	.474	46-107	.430	47-57	.825	16	64	80	2.2	45-0	54	46	13	25	309	8.4	
2025-26	SC	10-10	314/31.4	51-103	.495	22-48	.458	9-11	.818	7	27	34	3.4	11-0	27	15	4	4	133	13.3	
TOTAL		82-12	1722/21.0	235-501	.469	103-236	.436	100-119	.840	34	141	175	2.1	80-0	121	93	20	53	673	8.2	

#8 EDWARDS, Joyce

Opponent	Date	GS	MIN	Total		3-Pointers		Free throws		Rebounds				PF	A	TO	BLK	STL	PTS	AVG
				FG-FGA	PCT	3FG-3FGA	PCT	FT-FTA	PCT	OFF	DEF	TOT	AVG							
Grand Canyon	11/03/2025	*	27:10	5-11	.455	0-2	.000	3-4	.750	2	3	5	5.0	3	1	2	1	0	13	13.0
Bowling Green	11/07/2025	*	25:10	11-12	.917	0-0	.000	2-3	.667	3	1	4	4.5	0	3	0	3	0	24	18.5
Clemson	11/11/2025	*	30:16	8-17	.471	0-0	.000	2-3	.667	3	5	8	5.7	1	2	1	3	1	18	18.3
vs Southern California	11/15/2025	*	35:09	7-16	.438	0-0	.000	3-8	.375	4	6	10	6.8	3	4	6	2	2	17	18.0
Winthrop	11/19/2025	*	27:33	9-13	.692	0-0	.000	4-6	.667	3	2	5	6.4	1	1	2	0	1	22	18.8
Queens (NC)	11/23/2025	*	25:10	9-11	.818	0-0	.000	7-9	.778	2	2	4	6.0	3	3	1	2	2	25	19.8
vs Duke	11/26/2025	*	31:51	9-18	.500	0-1	.000	4-5	.800	1	5	6	6.0	1	6	1	0	3	22	20.1
vs Texas	11/27/2025	*	30:36	7-16	.438	0-0	.000	2-4	.500	1	3	4	5.8	3	3	0	1	2	16	19.6
at Louisville	12/04/2025	*	35:17	5-12	.417	1-1	1.000	1-2	.500	1	4	5	5.7	1	0	3	0	3	12	18.8
N.C. Central	12/07/2025	*	33:38	9-11	.818	0-0	.000	7-10	.700	4	6	10	6.1	3	6	7	3	4	25	19.4
Penn St.	12/14/2025	*	32:59	13-20	.650	1-1	1.000	2-6	.333	2	2	4	5.9	1	5	0	4	6	29	20.3
Totals			11 334:49	92-157	.586	2-5	.400	37-60	.617	26	39	65	5.9	20	34	23	19	24	223	20.3

Player Averages

Games Played	Minutes/game	Points/game	FG Pct	3FG Pct	FT Pct	Rebounds/game	Assists/game	Turnovers/game	Assist/Turnover ratio	Steals/game	Blocks/game
11	30.4	20.3	58.6	40.0	61.7	5.9	3.1	2.1	1.5	2.2	1.7

EDWARDS, Joyce

				Field Goals		3-Point		F-Throws		Rebounds										Scoring	
SEASON	TEAM	GP-GS	MIN/AVG	FG-FGA	FG%	3FG-3FGA	3FG%	FT-FTA	FT%	OFF	DEF	TOT	AVG	PF-FO	A	TO	BLK	STL	PTS	AVG	
2024-25	SC	39-1	831/21.3	193-365	.529	0-3	.000	108-139	.777	85	110	195	5.0	63-0	48	69	21	42	494	12.7	
2025-26	SC	11-11	335/30.4	92-157	.586	2-5	.400	37-60	.617	26	39	65	5.9	20-0	34	23	19	24	223	20.3	
TOTAL		50-12	1166/23.3	285-522	.546	2-8	.250	145-199	.729	111	149	260	5.2	83-0	82	92	40	66	717	14.3	

PLAYER GAME-BY-GAME AND CAREER STATS

#11 OKOT, Madina

Opponent	Date	GS	MIN	Total		3-Pointers		Free throws		Rebounds				PF	A	TO	BLK	STL	PTS	AVG
				FG-FGA	PCT	3FG-3FGA	PCT	FT-FTA	PCT	OFF	DEF	TOT	AVG							
Grand Canyon	11/03/2025	*	17:26	4-5	.800	0-0	.000	4-6	.667	0	4	4	4.0	3	0	0	0	0	12	12.0
Bowling Green	11/07/2025	*	21:36	6-9	.667	0-0	.000	1-1	1.000	4	7	11	7.5	0	2	0	4	1	13	12.5
Clemson	11/11/2025	*	24:46	5-12	.417	0-0	.000	2-2	1.000	4	8	12	9.0	3	1	1	1	1	12	12.3
vs Southern California	11/15/2025	*	34:45	3-9	.333	0-0	.000	0-0	.000	5	10	15	10.5	2	0	2	2	1	6	10.8
Winthrop	11/19/2025	*	25:16	10-12	.833	0-0	.000	3-4	.750	6	5	11	10.6	2	3	2	3	1	23	13.2
Queens (NC)	11/23/2025	*	19:16	5-8	.625	0-1	.000	4-4	1.000	2	10	12	10.8	1	0	0	3	2	14	13.3
vs Duke	11/26/2025	*	30:32	11-18	.611	0-1	.000	1-2	.500	5	8	13	11.1	1	2	3	2	4	23	14.7
vs Texas	11/27/2025	*	34:05	5-7	.714	0-0	.000	2-2	1.000	1	10	11	11.1	5	1	4	1	1	12	14.4
at Louisville	12/04/2025	*	32:38	10-16	.625	0-0	.000	3-7	.429	3	10	13	11.3	2	2	4	0	0	23	15.3
N.C. Central	12/07/2025	*	10:53	5-9	.556	0-0	.000	0-1	.000	7	2	9	11.1	0	1	2	1	1	10	14.8
Totals			10 251:14	64-105	.610	0-2	.000	20-29	.690	37	74	111	11.1	19	12	18	17	12	148	14.8

Player Averages

Games Played	Minutes/ game	Points/ game	FG Pct	3FG Pct	FT Pct	Rebounds/ game	Assists/ game	Turnovers/ game	Assist/Turnover ratio	Steals/ game	Blocks/ game
10	25.1	14.8	61.0	0.0	69.0	11.1	1.2	1.8	0.7	1.2	1.7

OKOT, Madina

				Field Goals		3-Point		F-Throws		Rebounds										Scoring	
SEASON	TEAM	GP-GS	MIN/AVG	FG-FGA	FG%	3FG-3FGA	3FG%	FT-FTA	FT%	OFF	DEF	TOT	AVG	PF-FO	A	TO	BLK	STL	PTS	AVG	
2024-25	MS	34-34	769/22.6	170-262	.649	0-0	.000	45-72	.625	120	205	325	9.6	90-3	24	85	38	46	385	11.3	
2025-26	SC	10-10	251/25.1	64-105	.610	0-2	.000	20-29	.690	37	74	111	11.1	19-1	12	18	17	12	148	14.8	
TOTAL FOR SC		10-10	251/25.1	64-105	.610	0-2	.000	20-29	.690	37	74	111	11.1	19-1	12	18	17	12	148	14.8	
TOTAL		44-44	1020/23.2	234-367	.638	0-2	.000	65-101	.644	157	279	436	9.9	109-4	36	103	55	58	533	12.1	

#15 TAC, Adhel

Opponent	Date	GS	MIN	Total		3-Pointers		Free throws		Rebounds				PF	A	TO	BLK	STL	PTS	AVG
				FG-FGA	PCT	3FG-3FGA	PCT	FT-FTA	PCT	OFF	DEF	TOT	AVG							
Grand Canyon	11/03/2025		14:45	1-2	.500	0-0	.000	0-1	.000	1	5	6	6.0	1	0	0	1	0	2	2.0
Bowling Green	11/07/2025		12:21	1-2	.500	0-0	.000	1-2	.500	1	1	2	4.0	1	2	0	1	1	3	2.5
Clemson	11/11/2025		05:57	0-0	.000	0-0	.000	0-0	.000	0	3	3	3.7	1	0	1	0	0	0	1.7
Winthrop	11/19/2025		12:44	3-3	1.000	0-0	.000	0-0	.000	1	4	5	4.0	2	0	0	1	0	6	2.8
Queens (NC)	11/23/2025		18:49	3-3	1.000	0-0	.000	5-8	.625	1	9	10	5.2	0	1	2	1	1	11	4.4
vs Duke	11/26/2025		07:02	0-0	.000	0-0	.000	2-2	1.000	1	0	1	4.5	1	0	1	0	0	2	4.0
vs Texas	11/27/2025		07:58	1-1	1.000	0-0	.000	0-0	.000	0	4	4	4.4	0	0	0	2	0	2	3.7
at Louisville	12/04/2025		03:23	0-1	.000	0-0	.000	1-2	.500	1	0	1	4.0	1	0	0	0	0	1	3.4
N.C. Central	12/07/2025	*	21:59	0-3	.000	0-0	.000	2-2	1.000	1	2	3	3.9	1	0	1	1	0	2	3.2
Penn St.	12/14/2025	*	14:31	1-3	.333	0-0	.000	0-2	.000	2	1	3	3.8	2	0	1	0	1	2	3.1
Totals			2 119:29	10-18	.556	0-0	.000	11-19	.579	9	29	38	3.8	10	3	6	7	3	31	3.1

Player Averages

Games Played	Minutes/ game	Points/ game	FG Pct	3FG Pct	FT Pct	Rebounds/ game	Assists/ game	Turnovers/ game	Assist/Turnover ratio	Steals/ game	Blocks/ game
10	11.9	3.1	55.6	0.0	57.9	3.8	0.3	0.6	0.5	0.3	0.7

TAC, Adhel

				Field Goals		3-Point		F-Throws		Rebounds									Scoring	
SEASON	TEAM	GP-GS	MIN/AVG	FG-FGA	FG%	3FG-3FGA	3FG%	FT-FTA	FT%	OFF	DEF	TOT	AVG	PF-FO	A	TO	BLK	STL	PTS	AVG
2024-25	SC	23-0	87/3.8	13-31	.419	0-0	.000	10-16	.625	15	22	37	1.6	20-0	1	5	2	2	36	1.6
2025-26	SC	10-2	119/11.9	10-18	.556	0-0	.000	11-19	.579	9	29	38	3.8	10-0	3	6	7	3	31	3.1
TOTAL		33-2	207/6.3	23-49	.469	0-0	.000	21-35	.600	24	51	75	2.3	30-0	4	11	9	5	67	2.0

PLAYER GAME-BY-GAME AND CAREER STATS

#24 MCDOWELL, Ayla

Opponent	Date	GS	MIN	Total		3-Pointers		Free throws		Rebounds				PF A TO BLK STL PTS AVG							
				FG-FGA	PCT	3FG-3FGA	PCT	FT-FTA	PCT	OFF	DEF	TOT	AVG	PF	A	TO	BLK	STL	PTS	AVG	
Grand Canyon	11/03/2025		17:29	3-5	.600	0-1	.000	3-4	.750	1	1	2	2.0	2	0	2	0	1	9	9.0	
Bowling Green	11/07/2025		22:47	3-5	.600	2-3	.667	3-4	.750	1	2	3	2.5	1	1	2	0	2	11	10.0	
Clemson	11/11/2025		04:09	0-0	.000	0-0	.000	0-0	.000	0	1	1	2.0	0	0	0	0	0	0	6.7	
vs Southern California	11/15/2025		03:33	0-1	.000	0-1	.000	0-0	.000	0	0	0	1.5	0	0	0	0	0	0	5.0	
Winthrop	11/19/2025		25:43	3-4	.750	0-1	.000	1-1	1.000	2	2	4	2.0	0	1	0	0	1	7	5.4	
Queens (NC)	11/23/2025		16:45	1-4	.250	1-4	.250	4-4	1.000	2	3	5	2.5	1	1	0	1	1	7	5.7	
vs Duke	11/26/2025		01:31	0-1	.000	0-0	.000	0-0	.000	0	0	0	2.1	0	0	0	0	0	0	4.9	
vs Texas	11/27/2025		05:12	0-3	.000	0-1	.000	0-0	.000	1	0	1	2.0	0	0	0	0	0	0	4.3	
at Louisville	12/04/2025		08:42	1-2	.500	1-1	1.000	0-0	.000	2	0	2	2.0	1	1	1	0	0	3	4.1	
N.C. Central	12/07/2025		26:56	5-9	.556	5-7	.714	1-2	.500	0	2	2	2.0	2	0	3	0	0	16	5.3	
Penn St.	12/14/2025		20:33	2-5	.400	0-2	.000	0-0	.000	3	1	4	2.2	1	0	0	0	0	4	5.2	
Totals		0	153:20	18-39	.462	9-21	.429	12-15	.800	12	12	24	2.2	8	4	8	1	5	57	5.2	

Player Averages

Games Played	Minutes/ game	Points/ game	FG Pct	3FG Pct	FT Pct	Rebounds/ game	Assists/ game	Turnovers/ game	Assist/Turnover ratio	Steals/ game	Blocks/ game
11	13.9	5.2	46.2	42.9	80.0	2.2	0.4	0.7	0.5	0.5	0.1

#25 JOHNSON, Raven

Opponent	Date	GS	MIN	Total		3-Pointers		Free throws		Rebounds											
				FG-FGA	PCT	3FG-3FGA	PCT	FT-FTA	PCT	OFF	DEF	TOT	AVG	PF	A	TO	BLK	STL	PTS	AVG	
Grand Canyon	11/03/2025	*	25:48	4-6	.667	3-5	.600	0-0	.000	0	8	8	8.0	2	7	1	0	3	11	11.0	
Bowling Green	11/07/2025	*	23:00	4-7	.571	1-2	.500	2-2	1.000	0	5	5	6.5	2	11	2	0	3	11	11.0	
Clemson	11/11/2025	*	30:02	1-5	.200	0-0	.000	0-0	.000	0	1	1	4.7	1	2	2	1	0	2	8.0	
vs Southern California	11/15/2025	*	37:41	6-12	.500	2-3	.667	0-0	.000	4	7	11	6.3	2	4	2	2	0	14	9.5	
Winthrop	11/19/2025	*	21:20	1-4	.250	0-3	.000	1-2	.500	0	4	4	5.8	2	10	1	1	0	3	8.2	
Queens (NC)	11/23/2025	*	22:09	5-6	.833	2-2	1.000	0-0	.000	0	2	2	5.2	2	7	2	2	3	12	8.8	
vs Duke	11/26/2025	*	25:45	3-8	.375	0-2	.000	4-5	.800	3	2	5	5.1	3	6	1	0	0	10	9.0	
vs Texas	11/27/2025	*	35:13	3-6	.500	0-0	.000	1-2	.500	0	0	0	4.5	0	6	3	1	2	7	8.8	
at Louisville	12/04/2025	*	38:18	4-7	.571	1-2	.500	2-2	1.000	1	3	4	4.4	2	8	1	1	0	11	9.0	
N.C. Central	12/07/2025	*	29:24	2-9	.222	1-5	.200	2-2	1.000	1	2	3	4.3	0	5	3	1	6	7	8.8	
Penn St.	12/14/2025	*	31:21	6-8	.750	1-3	.333	2-2	1.000	1	6	7	4.5	2	4	0	0	3	15	9.4	
Totals		11	320:01	39-78	.500	11-27	.407	14-17	.824	10	40	50	4.5	18	70	18	9	20	103	9.4	

Player Averages

Games Played	Minutes/ game	Points/ game	FG Pct	3FG Pct	FT Pct	Rebounds/ game	Assists/ game	Turnovers/ game	Assist/Turnover ratio	Steals/ game	Blocks/ game
11	29.1	9.4	50.0	40.7	82.4	4.5	6.4	1.6	3.9	1.8	0.8

JOHNSON, Raven

				Field Goals		3-Point		F-Throws		Rebounds									Scoring	
SEASON	TEAM	GP-GS	MIN/AVG	FG-FGA	FG%	3FG-3FGA	3FG%	FT-FTA	FT%	OFF	DEF	TOT	AVG	PF-FO	A	TO	BLK	STL	PTS	AVG
2021-22	SC	2-0	8/4.2	0-1	.000	0-0	.000	0-0	.000	0	1	1	0.5	0-0	0	1	0	0	0	0.0
2022-23	SC	36-3	674/18.7	60-163	.368	14-58	.241	17-26	.654	20	74	94	2.6	38-0	123	52	13	40	151	4.2
2023-24	SC	37-35	1034/27.9	120-271	.443	28-80	.350	30-49	.612	37	156	193	5.2	44-0	179	58	7	78	298	8.1
2024-25	SC	39-39	944/24.2	76-217	.350	23-78	.295	15-22	.682	49	125	174	4.5	35-0	108	39	24	54	190	4.9
2025-26	SC	11-11	320/29.1	39-78	.500	11-27	.407	14-17	.824	10	40	50	4.5	18-0	70	18	9	20	103	9.4
TOTAL		125-88	2981/23.9	295-730	.404	76-243	.313	76-114	.667	116	396	512	4.1	135-0	480	168	53	192	742	5.9

PLAYER GAME-BY-GAME AND CAREER STATS

#30 DAUDA, Maryam

Opponent	Date	GS	MIN	Total		3-Pointers		Free throws		Rebounds				PF A TO BLK STL PTS AVG						
				FG-FGA	PCT	3FG-3FGA	PCT	FT-FTA	PCT	OFF	DEF	TOT	AVG	PF	A	TO	BLK	STL	PTS	AVG
Grand Canyon	11/03/2025		09:58	0-0	.000	0-0	.000	0-0	.000	0	2	2	2.0	1	0	0	0	0	0	0.0
Bowling Green	11/07/2025		20:53	2-3	.667	0-0	.000	5-6	.833	4	4	8	5.0	1	0	2	1	1	9	4.5
Clemson	11/11/2025		15:59	1-4	.250	0-1	.000	0-0	.000	3	4	7	5.7	1	0	1	1	1	2	3.7
vs Southern California	11/15/2025		06:53	1-2	.500	0-0	.000	0-0	.000	2	1	3	5.0	1	0	1	1	1	2	3.3
Winthrop	11/19/2025		11:43	0-2	.000	0-1	.000	0-2	.000	0	1	1	4.2	2	1	1	1	0	0	2.6
Queens (NC)	11/23/2025		16:45	4-7	.571	0-2	.000	1-2	.500	0	5	5	4.3	2	0	2	1	0	9	3.7
vs Duke	11/26/2025		10:35	0-1	.000	0-0	.000	0-0	.000	2	4	6	4.6	3	0	0	0	0	0	3.1
vs Texas	11/27/2025		02:09	0-0	.000	0-0	.000	0-0	.000	0	0	0	4.0	0	0	1	0	0	0	2.8
N.C. Central	12/07/2025		18:15	2-6	.333	0-2	.000	2-2	1.000	3	4	7	4.3	0	2	0	3	0	6	3.1
Penn St.	12/14/2025		18:12	1-2	.500	0-0	.000	1-4	.250	3	0	3	4.2	1	0	1	0	1	3	3.1
Totals		0	131:22	11-27	.407	0-6	.000	9-16	.563	17	25	42	4.2	12	3	9	8	4	31	3.1

Player Averages

Games Played	Minutes/ game	Points/ game	FG Pct	3FG Pct	FT Pct	Rebounds/ game	Assists/ game	Turnovers/ game	Assist/Turnover ratio	Steals/ game	Blocks/ game
10	13.1	3.1	40.7	0.0	56.3	4.2	0.3	0.9	0.3	0.4	0.8

DAUDA, Maryam

				Field Goals		3-Point		F-Throws		Rebounds				Scoring						
SEASON	TEAM	GP-GS	MIN/AVG	FG-FGA	FG%	3FG-3FGA	3FG%	FT-FTA	FT%	OFF	DEF	TOT	AVG	PF-FO	A	TO	BLK	STL	PTS	AVG
2022-23	AR	35-0	386/11.0	47-112	.420	6-24	.250	23-31	.742	45	49	94	2.7	64-0	23	42	22	11	123	3.5
2023-24	AR	33-33	947/28.7	121-266	.455	29-91	.319	62-82	.756	79	130	209	6.3	96-1	41	67	74	24	333	10.1
2024-25	SC	34-0	217/6.4	18-56	.321	6-24	.250	27-36	.750	26	39	65	1.9	29-0	4	14	5	8	69	2.0
2025-26	SC	10-0	131/13.1	11-27	.407	0-6	.000	9-16	.563	17	25	42	4.2	12-0	3	9	8	4	31	3.1
TOTAL FOR SC		44-0	349/7.9	29-83	.349	6-30	.200	36-52	.692	43	64	107	2.4	41-0	7	23	13	12	100	2.3
TOTAL		112-33	1681/15.0	197-461	.427	41-145	.283	121-165	.733	167	243	410	3.7	201-1	71	132	109	47	556	5.0

#44 MAKEER, Agot

Opponent	Date	GS	MIN	Total		3-Pointers		Free throws		Rebounds				PF A TO BLK STL PTS AVG						
				FG-FGA	PCT	3FG-3FGA	PCT	FT-FTA	PCT	OFF	DEF	TOT	AVG	PF	A	TO	BLK	STL	PTS	AVG
Grand Canyon	11/03/2025		19:06	1-3	.333	1-2	.500	2-2	1.000	0	2	2	2.0	4	2	3	3	0	5	5.0
Bowling Green	11/07/2025		15:45	4-6	.667	1-2	.500	3-5	.600	1	2	3	2.5	0	0	2	1	1	12	8.5
Clemson	11/11/2025		19:13	2-4	.500	2-3	.667	0-0	.000	0	4	4	3.0	3	0	1	1	0	6	7.7
vs Southern California	11/15/2025		17:03	2-6	.333	0-2	.000	0-0	.000	1	3	4	3.3	1	1	2	0	1	4	6.8
Winthrop	11/19/2025		21:17	6-10	.600	0-1	.000	0-0	.000	3	4	7	4.0	2	4	0	0	2	12	7.8
Queens (NC)	11/23/2025		19:49	1-5	.200	0-4	.000	2-2	1.000	0	3	3	3.8	1	1	1	1	1	4	7.2
vs Duke	11/26/2025		16:24	2-6	.333	0-1	.000	0-0	.000	1	3	4	3.9	1	1	0	0	0	4	6.7
vs Texas	11/27/2025		03:17	0-1	.000	0-1	.000	0-0	.000	0	2	2	3.6	1	0	0	0	0	0	5.9
Totals		0	131:54	18-41	.439	4-16	.250	7-9	.778	6	23	29	3.6	13	9	9	6	5	47	5.9

Player Averages

Games Played	Minutes/ game	Points/ game	FG Pct	3FG Pct	FT Pct	Rebounds/ game	Assists/ game	Turnovers/ game	Assist/Turnover ratio	Steals/ game	Blocks/ game
8	16.5	5.9	43.9	25.0	77.8	3.6	1.1	1.1	1.0	0.6	0.8

2025-26 SOUTH CAROLINA GAME-BY-GAME STATS

				Total		3-Pointers		Free throws		Rebounds											
Opponent	Date	Score		FG-FGA	PCT	3FG-3FGA	PCT	FT-FTA	PCT	OFF	DEF	TOT	AVG	PF	A	TO	BLK	STL	PTS	AVG	
Grand Canyon	11/03/2025	94-54	W	34-57	.596	9-19	.474	17-25	.680	5	33	38	38.0	21	19	11	6	6	94	94.0	
Bowling Green	11/07/2025	114-47	W	42-66	.636	6-14	.429	24-30	.800	16	37	53	45.5	9	26	14	11	9	114	104.0	
Clemson	11/11/2025	65-37	W	26-58	.448	5-9	.556	8-10	.800	11	37	48	46.3	10	11	12	10	3	65	91.0	
vs Southern California	11/15/2025	69-52	W	29-71	.408	4-10	.400	7-12	.583	21	35	56	48.8	14	16	17	7	7	69	85.5	
Winthrop	11/19/2025	106-56	W	43-67	.642	5-17	.294	15-24	.625	18	28	46	48.2	13	25	9	7	6	106	89.6	
Queens (NC)	11/23/2025	121-49	W	43-65	.662	8-20	.400	27-34	.794	10	41	51	48.7	12	26	11	12	14	121	94.8	
vs Duke	11/26/2025	83-66	W	35-74	.473	1-10	.100	12-16	.750	15	28	43	47.9	13	18	7	3	9	83	93.1	
vs Texas	11/27/2025	64-66	L	25-58	.431	2-7	.286	12-16	.750	11	21	32	45.9	13	17	13	5	7	64	89.5	
at Louisville	12/04/2025	79-77	W	30-61	.492	8-16	.500	11-17	.647	10	24	34	44.6	10	19	12	1	4	79	88.3	
N.C. Central	12/07/2025	106-42	W	34-67	.507	11-21	.524	27-34	.794	22	23	45	44.6	10	19	17	10	16	106	90.1	
Penn St.	12/14/2025	95-55	W	37-73	.507	6-21	.286	15-28	.536	13	30	43	44.5	10	20	5	5	17	95	90.5	
Total		996		378-717	.527	65-164	.396	175-246	.711	152	337	489	44.5	135	216	128	77	98	996	90.5	
Opponents		601		227-713	.318	64-250	.256	83-116	.716	150	205	355	32.3	208	120	199	28	50	601	54.6	

South Carolina Averages

Games Played	Points/game	FG Pct	3FG Pct	FT Pct	Rebounds/game	Assists/game	Turnovers/game	Assist/Turnover ratio	Steals/game	Blocks/game
11	90.5	52.7	39.6	71.1	44.5	19.6	11.6	1.7	8.9	7.0

2025-26 OPPONENT GAME-BY-GAME STATS

				Total		3-Pointers		Free throws		Rebounds											
Opponent	Date	Score		FG-FGA	PCT	3FG-3FGA	PCT	FT-FTA	PCT	OFF	DEF	TOT	AVG	PF	A	TO	BLK	STL	PTS	AVG	
Grand Canyon	11/03/2025	94-54	W	17-62	.274	7-34	.206	13-17	.765	12	19	31	31.0	26	6	17	3	3	54	54.0	
Bowling Green	11/07/2025	114-47	W	18-74	.243	6-26	.231	5-6	.833	17	8	25	28.0	20	9	18	2	11	47	50.5	
Clemson	11/11/2025	65-37	W	14-61	.230	5-33	.152	4-4	1.000	10	21	31	29.0	14	9	10	1	5	37	46.0	
vs Southern California	11/15/2025	69-52	W	22-67	.328	1-14	.071	7-10	.700	10	22	32	29.8	13	15	13	7	5	52	47.5	
Winthrop	11/19/2025	106-56	W	21-66	.318	7-21	.333	7-9	.778	15	9	24	28.6	20	8	15	0	2	56	49.2	
Queens (NC)	11/23/2025	121-49	W	16-70	.229	9-28	.321	8-10	.800	12	13	25	28.0	25	11	21	1	5	49	49.2	
vs Duke	11/26/2025	83-66	W	24-61	.393	8-20	.400	10-13	.769	10	25	35	29.0	12	17	16	4	1	66	51.6	
vs Texas	11/27/2025	64-66	L	25-60	.417	1-6	.167	15-20	.750	16	23	39	30.3	18	15	15	5	8	66	53.4	
at Louisville	12/04/2025	79-77	W	31-65	.477	9-23	.391	6-10	.600	11	23	34	30.7	16	11	12	1	3	77	56.0	
N.C. Central	12/07/2025	106-42	W	16-54	.296	6-19	.316	4-7	.571	15	13	28	30.4	24	9	36	2	4	42	54.6	
Penn St.	12/14/2025	95-55	W	23-73	.315	5-26	.192	4-10	.400	22	29	51	32.3	20	10	26	2	3	55	54.6	
Total		601		227-713	.318	64-250	.256	83-116	.716	150	205	355	32.3	208	120	199	28	50	601	54.6	
South Carolina		996		378-717	.527	65-164	.396	175-246	.711	152	337	489	44.5	135	216	128	77	98	996	90.5	

Opponents Averages

Games Played	Points/game	FG Pct	3FG Pct	FT Pct	Rebounds/game	Assists/game	Turnovers/game	Assist/Turnover ratio	Steals/game	Blocks/game
11	54.6	31.8	25.6	71.6	32.3	10.9	18.1	0.6	4.5	2.5

2025-26 SOUTH CAROLINA POINTS-REBOUNDS-ASSISTS

Opponent	Date	Score		00	1	5	8	11	15	24	25	30	44
				LATSON,TA'	MCDANIEL,M	JOHNSON,TE	EDWARDS,JO	OKOT,MADIN	TAC,ADHEL	MCDOWELL,A	JOHNSON,RA	DAUDA,MARY	MAKEER,AGO
Grand Canyon	11/03/2025	94-54	W	20-1-4	3-0-2	19-5-3	13-5-1	12-4-0	2-6-0	9-2-0	11-8-7	0-2-0	5-2-2
Bowling Green	11/07/2025	114-47	W	17-4-4	DNP	14-7-3	24-4-3	13-11-2	3-2-2	11-3-1	11-5-11	9-8-0	12-3-0
Clemson	11/11/2025	65-37	W	12-8-3	DNP	13-2-3	18-8-2	12-12-1	0-3-0	0-1-0	2-1-2	2-7-0	6-4-0
vs Southern California	11/15/2025	69-52	W	12-4-2	DNP	14-4-5	17-10-4	6-15-0	DNP	0-0-0	14-11-4	2-3-0	4-4-1
Winthrop	11/19/2025	106-56	W	24-5-4	DNP	9-1-1	22-5-1	23-11-3	6-5-0	7-4-1	3-4-10	0-1-1	12-7-4
Queens (NC)	11/23/2025	121-49	W	24-2-5	2-1-3	13-1-5	25-4-3	14-12-0	11-10-1	7-5-1	12-2-7	9-5-0	4-3-1
vs Duke	11/26/2025	83-66	W	12-1-2	5-1-1	5-1-0	22-6-6	23-13-2	2-1-0	0-0-0	10-5-6	0-6-0	4-4-1
vs Texas	11/27/2025	64-66	L	16-4-2	0-0-2	11-0-3	16-4-3	12-11-1	2-4-0	0-1-0	7-0-6	0-0-0	0-2-0
at Louisville	12/04/2025	79-77	W	9-1-5	0-1-0	20-7-3	12-5-0	23-13-2	1-1-0	3-2-1	11-4-8	DNP	DNP
N.C. Central	12/07/2025	106-42	W	32-4-2	8-3-3	DNP	25-10-6	10-9-1	2-3-0	16-2-0	7-3-5	6-7-2	DNP
Penn St.	12/14/2025	95-55	W	18-6-8	9-4-2	15-6-1	29-4-5	DNP	2-3-0	4-4-0	15-7-4	3-3-0	DNP

2025-26 VS. RANKED OPPONENTS

Game Records

Record	Overall	Home	Away	Neutral
ALL GAMES	2-1	0-0	1-0	1-1
CONFERENCE	0-0	0-0	0-0	0-0
NON-CONFERENCE	2-1	0-0	1-0	1-1

Score by Periods

Team	1st	2nd	3rd	4th	OT	TOT
South Carolina	66	40	62	44	0	212
Opponents	64	38	51	42	0	195

Team Box Score

No.	Player				Total		3-Point		F-Throw		Rebounds											
		GP-GS	MIN	AVG	FG-FGA	FG%	3FG-3FGA	3FG%	FT-FTA	FT%	OFF	DEF	TOT	AVG	PF	DQ	A	TO	BLK	STL	PTS	AVG
5	JOHNSON, Tessa	3-3	111:27	37.2	16-34	.471	7-14	.500	6-6	1.000	3	8	11	3.7	6	0	11	6	0	1	45	15.0
8	EDWARDS, Joyce	3-3	101:02	33.7	19-44	.432	1-1	1.000	6-14	.429	6	13	19	6.3	7	0	7	9	3	7	45	15.0
11	OKOT, Madina	3-3	101:28	33.8	18-32	.563	0-0	.000	5-9	.556	9	30	39	13.0	9	1	3	10	3	2	41	13.7
00	LATSON, Ta'Niya	3-3	98:28	32.8	13-35	.371	2-5	.400	9-10	.900	6	3	9	3.0	6	0	9	5	0	3	37	12.3
25	JOHNSON, Raven	3-3	111:12	37.1	13-25	.520	3-5	.600	3-4	.750	5	10	15	5.0	4	0	18	6	4	2	32	10.7
44	MAKEER, Agot	2-0	20:20	10.2	2-7	.286	0-3	.000	0-0	.000	1	5	6	3.0	2	0	1	2	0	1	4	2.0
15	TAC, Adhel	2-0	11:21	5.7	1-2	.500	0-0	.000	1-2	.500	1	4	5	2.5	1	0	0	0	2	0	3	1.5
30	DAUDA, Maryam	2-0	09:02	4.5	1-2	.500	0-0	.000	0-0	.000	2	1	3	1.5	1	0	0	2	1	1	2	1.0
24	MCDOWELL, Ayla	3-0	17:27	5.8	1-6	.167	1-3	.333	0-0	.000	3	0	3	1.0	1	0	1	1	0	0	3	1.0
1	MCDANIEL, Maddy	2-0	18:13	9.1	0-3	.000	0-2	.000	0-0	.000	0	1	1	0.5	0	0	2	0	0	1	0	0.0
Team											6	5	11					1				
Total		3	600		84-190	.442	14-33	.424	30-45	.667	42	80	122	40.7	37	1	52	42	13	18	212	70.7
Opponents		3	600		78-192	.406	11-43	.256	28-40	.700	37	68	105	35.0	47	0	41	40	13	16	195	65.0

Team Results

Date	Opponent		Score	Att.
11/15/2025	vs Southern California	W	69-52	8150
11/27/2025	vs Texas	L	64-66	1950
12/04/2025	at Louisville	W	79-77	10012

LAST 5 GAMES

Game Records

Record	Overall	Home	Away	Neutral
ALL GAMES	4-1	2-0	1-0	1-1
CONFERENCE	0-0	0-0	0-0	0-0
NON-CONFERENCE	4-1	2-0	1-0	1-1

Score by Periods

Team	1st	2nd	3rd	4th	OT	TOT
South Carolina	112	94	117	104	0	427
Opponents	91	67	71	77	0	306

Team Box Score

No.	Player				Total		3-Point		F-Throw		Rebounds											
		GP-GS	MIN	AVG	FG-FGA	FG%	3FG-3FGA	3FG%	FT-FTA	FT%	OFF	DEF	TOT	AVG	PF	DQ	A	TO	BLK	STL	PTS	AVG
8	EDWARDS, Joyce	5-5	164:21	32.9	43-77	.558	2-3	.667	16-27	.593	9	20	29	5.8	9	0	20	11	8	18	104	20.8
00	LATSON, Ta'Niya	5-5	165:58	33.2	29-66	.439	8-20	.400	21-22	.955	5	11	16	3.2	8	0	19	6	2	9	87	17.4
11	OKOT, Madina	4-4	108:08	27.0	31-50	.620	0-1	.000	6-12	.500	16	30	46	11.5	8	1	6	13	4	6	68	17.0
5	JOHNSON, Tessa	4-4	131:36	32.9	20-44	.455	7-17	.412	4-6	.667	3	11	14	3.5	5	0	7	4	1	2	51	12.8
25	JOHNSON, Raven	5-5	160:01	32.0	18-38	.474	3-12	.250	11-13	.846	6	13	19	3.8	7	0	29	8	3	11	50	10.0
24	MCDOWELL, Ayla	5-0	62:54	12.6	8-20	.400	6-11	.545	1-2	.500	6	3	9	1.8	4	0	1	4	0	0	23	4.6
1	MCDANIEL, Maddy	5-0	83:17	16.7	5-14	.357	2-7	.286	10-15	.667	2	7	9	1.8	4	0	8	1	0	5	22	4.4
30	DAUDA, Maryam	4-0	49:11	12.3	3-9	.333	0-2	.000	3-6	.500	8	8	16	4.0	4	0	2	2	3	1	9	2.3
44	MAKEER, Agot	2-0	19:41	9.8	2-7	.286	0-2	.000	0-0	.000	1	5	6	3.0	2	0	1	0	0	0	4	2.0
15	TAC, Adhel	5-2	54:53	11.0	2-8	.250	0-0	.000	5-8	.625	5	7	12	2.4	5	0	0	3	3	1	9	1.8
Team											10	11	21					2				
Total		5	1000		161-333	.483	28-75	.373	77-111	.694	71	126	197	39.4	56	1	93	54	24	53	427	85.4
Opponents		5	1000		119-313	.380	29-94	.309	39-60	.650	74	113	187	37.4	90	2	62	105	14	19	306	61.2

Team Results

Date	Opponent		Score	Att.
11/26/2025	vs Duke	W	83-66	2386
11/27/2025	vs Texas	L	64-66	1950
12/04/2025	at Louisville	W	79-77	10012
12/07/2025	N.C. Central	W	106-42	15677
12/14/2025	Penn St.	W	95-55	15601

2025-26 OVERALL STATS

Game Records

Record	Overall	Home	Away	Neutral
ALL GAMES	10-1	7-0	1-0	2-1
CONFERENCE	0-0	0-0	0-0	0-0
NON-CONFERENCE	10-1	7-0	1-0	2-1

Score by Periods

Team	1st	2nd	3rd	4th	OT	TOT
South Carolina	265	242	254	235	0	996
Opponents	156	152	163	130	0	601

Team Box Score

No.	Player	GP-GS			Total		3-Point		F-Throw		Rebounds											
		GP-GS	MIN	AVG	FG-FGA	FG%	3FG-3FGA	3FG%	FT-FTA	FT%	OFF	DEF	TOT	AVG	PF	DQ	A	TO	BLK	STL	PTS	AVG
8	EDWARDS, Joyce	11-11	334:49	30.4	92-157	.586	2-5	.400	37-60	.617	26	39	65	5.9	20	0	34	23	19	24	223	20.3
00	LATSON, Ta'Niya	11-11	341:02	31.0	68-131	.519	14-31	.452	46-55	.836	8	32	40	3.6	17	0	41	18	6	15	196	17.8
11	OKOT, Madina	10-10	251:14	25.1	64-105	.610	0-2	.000	20-29	.690	37	74	111	11.1	19	1	12	18	17	12	148	14.8
5	JOHNSON, Tessa	10-10	313:37	31.4	51-103	.495	22-48	.458	9-11	.818	7	27	34	3.4	11	0	27	15	4	4	133	13.3
25	JOHNSON, Raven	11-11	320:01	29.1	39-78	.500	11-27	.407	14-17	.824	10	40	50	4.5	18	0	70	18	9	20	103	9.4
44	MAKEER, Agot	8-0	131:54	16.5	18-41	.439	4-16	.250	7-9	.778	6	23	29	3.6	13	0	9	9	6	5	47	5.9
24	MCDOWELL, Ayla	11-0	153:20	13.9	18-39	.462	9-21	.429	12-15	.800	12	12	24	2.2	8	0	4	8	1	5	57	5.2
1	MCDANIEL, Maddy	7-0	103:14	14.7	7-18	.389	3-8	.375	10-15	.667	2	8	10	1.4	7	0	13	1	0	6	27	3.9
30	DAUDA, Maryam	10-0	131:22	13.1	11-27	.407	0-6	.000	9-16	.563	17	25	42	4.2	12	0	3	9	8	4	31	3.1
15	TAC, Adhel	10-2	119:29	11.9	10-18	.556	0-0	.000	11-19	.579	9	29	38	3.8	10	0	3	6	7	3	31	3.1
Team											18	28	46					3				
Total		11	2200		378-717	.527	65-164	.396	175-246	.711	152	337	489	44.5	135	1	216	128	77	98	996	90.5
Opponents		11	2200		227-713	.318	64-250	.256	83-116	.716	150	205	355	32.3	208	6	120	199	28	50	601	54.6

Team Statistics

	SC	OPP
Scoring	996	601
Points per game	90.5	54.6
Scoring margin	+35.9	-
Field goals-att	378-717	227-713
Field goal pct	.527	.318
3 point fg-att	65-164	64-250
3-point FG pct	.396	.256
3-pt FG made per game	5.9	5.8
Free throws-att	175-246	83-116
Free throw pct	.711	.716
F-Throws made per game	15.9	7.5
Rebounds	489	355
Rebounds per game	44.5	32.3
Rebounding margin	+12.2	-
Assists	216	120
Assists per game	19.6	10.9
Turnovers	128	199
Turnovers per game	11.6	18.1
Turnover margin	+6.5	-
Assist/turnover ratio	1.7	0.6
Steals	98	50
Steals per game	8.9	4.5
Blocks	77	28
Blocks per game	7.0	2.5
Winning streak	3	-
Home win streak	7	-
Attendance	111160	10012
Home games-Avg/Game	7-15880	1-10012
Neutral site-Avg/Game	-	3-4162

Team Results

Date	Opponent		Score	Att.
11/03/2025	Grand Canyon	W	94-54	15601
11/07/2025	Bowling Green	W	114-47	16649
11/11/2025	Clemson	W	65-37	16623
11/15/2025	vs Southern California	W	69-52	8150
11/19/2025	Winthrop	W	106-56	15787
11/23/2025	Queens (NC)	W	121-49	15222
11/26/2025	vs Duke	W	83-66	2386
11/27/2025	vs Texas	L	64-66	1950
12/04/2025	at Louisville	W	79-77	10012
12/07/2025	N.C. Central	W	106-42	15677
12/14/2025	Penn St.	W	95-55	15601