

SOUTH CAROLINA WOMEN'S BASKETBALL



3 NCAA CHAMPIONSHIPS • 7 NCAA FINAL FOURS • 9 SEC CHAMPIONSHIPS • 9 SEC TOURNAMENT TITLES • 26 ALL-AMERICANS

Assoc. AD Comms/PR: Diana Koval | Office: 803.777.7977 | Cell: 314.369.6050 | Email: dkoval@mailbox.sc.edu
Web: www.GamecocksOnline.com | X: @GamecockWBB | Instagram: @GamecockWBB | TikTok: @GamecockWBB | Facebook: @GamecockWBB

GAME 11 • DECEMBER 14, 2025 • COLUMBIA, SC • COLONIAL LIFE ARENA (18,000)

#3/3 GAMECOCKS

9-1

Head Coach: Dawn Staley
Record at SC: 484-112 (18th)
Career Record: 656-192 (26th)
Top Scorer: Joyce Edwards (19.4)
Top Rebounder: Madina Okot (11.1)



PENN STATE

6-3

Head Coach: Carolyn Kieger
Record at PSU: 79-108 (7th)
Career Record: 178-172 (12th)
Top Scorer: Gracie Merkle (22.3)
Top Rebounder: Gracie Merkle (8.0)

SCHEDULE/RESULTS

Oct. 24	Anderson (Exh.)	W, 112-31
Oct. 30	vs. #11/11 N. Carolina (Exh.)	W, 91-82
Nov. 3	Grand Canyon (SECN+)	W, 94-54
Nov. 7	Bowling Green (SECN+)	W, 114-47
Nov. 11	Clemson (ESPN2)	65-37

The Real SC (Los Angeles)
Nov. 15 vs. #8/10 Southern Cal (FOX) W, 69-52

Nov. 19 Winthrop (SECN) W, 106-56
Nov. 23 Queens (SECN+) W, 121-49

Players Era Championship (Las Vegas)
Nov. 26 vs. Duke W, 83-66
Nov. 27 vs. #4/4 Texas L, 64-66

ACC/SEC Challenge
Dec. 4 at #22/21 Louisville (ESPN) W, 79-77

Dec. 7	NC Central (SECN)	106-42
Dec. 14	Penn State (ESPN)	3:30 p.m.
Dec. 18	at USF (ESPN2)	7 p.m.
Dec. 20	at Florida Gulf Coast (ESPN+)	2 p.m.
Dec. 28	Providence (SECN)	Noon
Jan. 1	Alabama* (SECN+)	2 p.m.
Jan. 4	at Florida* (SECN)	2 p.m.
Jan. 8	at Arkansas* (SECN+)	7:30 p.m.
Jan. 11	Georgia* (SECN)	2 p.m.
Jan. 15	Texas* (ESPN2)	7 p.m.
Jan. 18	at Coppin State (ESPN+)	Noon
Jan. 22	at Oklahoma* (ESPN)	7:30 p.m.
Jan. 25	Vanderbilt* (ESPN)	3 p.m.
Jan. 29	at Auburn* (SECN)	9 p.m.
Feb. 2	at Texas A&M* (ESPN2/U)	8 p.m.
Feb. 5	Mississippi State* (SECN)	6:30 p.m.
Feb. 8	Tennessee* (ABC)	3 p.m.
Feb. 14	at LSU* (ABC)	8:30 p.m.
Feb. 19	at Alabama* (SECN)	8:30 p.m.
Feb. 22	Ole Miss* (ESPN/2)	Noon
Feb. 26	Missouri* (SECN)	8 p.m.
Mar. 1	at Kentucky* (SECN+)	2 p.m.

Mar. 4-8 SEC Tournament (Greenville, SC)

* indicates SEC game
All times Eastern
TV outlet listed in parentheses (SECN is SEC Network; SECN+ is SEC Network online via the ESPN app)

THE SERIES

SC Record/Staley Era: 4-6 / 1-3
H: 2-2 A: 2-4 N: 0-0
Current Streak: L2
Last Meeting: L 50-55, 11/20/11 in Columbia

HOW TO FOLLOW

Watch: ESPN (Tiffany Greene, Carolyn Peck)
Listen: 107.5 FM; Sirius 145 and on the SiriusXM app (Brad Muller)
Live Stats: StatBroadcast

GAMECOCK NOTABLES

- South Carolina's 53.0 percent shooting this season ranks fourth in the nation, putting their offensive rebound numbers lower than usual. Still, the Gamecocks are eighth in the nation in offensive rebounding percentage, pulling down 44.1 percent of their own misses.
- The Gamecocks' 1.03 points per play and 1.20 points per scoring attempt are the highest of the Dawn Staley era and both rank sixth in the country, according to Her Hoop Stats.
- South Carolina has been outstanding in transition this season, ranking second in the nation with 24.5 fast break points per game. Defensively, the Gamecocks have allowed just 7.0 fast break points per game.
- Preseason AP All-American **Ta'Niya Latson** has her hands on 28.2 percent of the Gamecocks' offense with her 17.8 points per game (8th in SEC) added to the additional 7.6 points per game scored off her assists (3.3, 15th in SEC). Her scoring includes three 20-point games and a 30-point outing and is highlighted by career-best shooting percentages overall (.538, 10th in SEC) and from 3-point range (.542).
- Senior **Madina Okot** is the national leader with seven double-doubles this season, and her SEC-best 11.1 rebounds per game rank 10th in the country. Her 15 rebounds at #8/10 Southern Cal (Nov. 15) were the most by a Gamecock against a ranked opponent since Kamilla Cardoso grabbed 17 in the 2024 National Championship game.
- Junior guard **Tessa Johnson** is 19th in the nation in 3-point percentage, hitting 48.8 percent from beyond the arc. She is the only player in the SEC ranked among the league's top 15 in 3-point percentage (2nd) and overall field goal percentage (14th, .511).
- South Carolina's leading scorer **Joyce Edwards** is third in the SEC and 29th in the country at 19.4 points per game. She has five 20-point outings, which matches her freshman season total. The athletic forward is eighth in the SEC in field goal percentage (.577) and second on the team in rebounding at 6.1 per game. Over the last five games, she has expanded her court vision as well, averaging 3.6 assists per game in that stretch.

3

In the first five weeks of the season, three Gamecocks have been named SEC and/or USBWA Player of the Week.

48.0

South Carolina averaged 48.0 points in the paint over the last five games, accounting for 53.0 percent of its total offense.

98.6

The Gamecocks have won 98.6 percent of their games at Colonial Life Arena over the last five seasons.

TALE OF THE TAPE

SOUTH CAROLINA	90.1	.530	.413	5.9	.734	16.0	54.6	+35.5	.319	.263	+14.2	19.6	+5.0	7.2	8.1
	Points	FG%	3FG%	3FGM per Game	FT%	FTM per Game	Scoring Def.	Scoring Margin	FG% Def.	3FG% Def.	Reb. Margin	Assist Avg.	TO Margin	Blocks Avg.	Steals Avg.
PENN STATE	82.8	.504	.371	7.0	.710	9.8	75.2	+7.6	.426	.382	+8.0	19.2	-1.4	4.1	12.0

TA'NIYA LATSON

5-8 • Sr. • G • Miami, FL

tuh-NYE-uh LAT-son

00



Last Gm: 32 pts, 5 3FGs, 4 rebs, 3 stls vs. NCCU
Efficient scorer and distributor, growing defensively ... SEC top-15 in ppg, FG%, apg, FT%, A:TO ... 66 career 20-point games (4 SC) ... 3x All-American.

2025-26	Career*	Career Highs
PPG 17.8	22.1	Pt: 40 at Va. Tech, 1/2/25*
APG 3.3	3.8	Rb: 11 vs. TTU, 11/29/24**
FG% .538	.454	Ast: 12 at Va., 2/6/25*
3FG% .542	.341	Stl: 8 vs. Presby, 12/15/22*
FT% .813	.840	3FG: 5 vs. NCCU, 12/7/25**

MADDY McDANIEL

5-9 • So. • G • Upper Marlboro, Md.

1



Last Gm: 8 pts, 3 rebs, 3 assts, 2 stls vs. NCCU
Court vision, can get to the rim, makes good decisions ... 11.6 mpg, 11.0 A:TO ... no turnovers this season.

2025-26	Career	Career Highs
PPG 3.0	3.1	Pt: 10 vs. Purdue, 11/30/24
RPG 1.0	0.9	Rb: 4 vs. USF, 12/15/24*
APG 1.8	1.7	Ast: 6 vs. ECU, 11/17/24
FG% .333	.475	Stl: 4 vs. ECU, 11/17/24
FT% .750	.705	3FG: 1 vs. GCU, 11/3/25*

TESSA JOHNSON

6-0 • Jr. • G • Albertville, MN

5



Last Gm: 20 pts, 4 3FGs, 7 rebs, 3 assts at Louisville
Multi-level scoring threat, strong ... SEC top-5 in 3FG%, 3s/gm (2.3) ... vs. ranked – 15.0 ppg 3.6 apg... 2024 NCAA Final Four All-Tournament Team.

2025-26	Career	Career Highs
PPG 13.1	8.1	Pt: 22 at Miss. St., 1/5/25
APG 2.9	1.5	Rb: 7 at UofL, 12/4/25*
FG% .511	.471	A: 6 vs. TN Tech, 3/21/25*
3FG% .488	.442	Stl: 3 vs. Ala., 2/22/24*
FT% 1.000	.852	3FG: 4 at UofL, 12/4/25*

JOYCE EDWARDS

6-3 • So. • F • Camden, SC

8



Last Gm: 25 pts, 10 rebs, 6 assts, 3 blks vs. NCCU
Size, speed, skill and feel for game ... SEC top-10 in ppg, bpg, FG% ... 5 20-pt gms this season ... 2025 All-Amer., 1st-Tm All-SEC ... 2025 FIBA AmeriCup gold.

2025-26	Career	Career Highs
PPG 19.4	14.0	Pt: 28 vs. Fla., 2/13/25
RPG 6.1	5.2	Rb: 12 at Vandy, 2/23/25
BPG 1.5	0.7	Blk: 3 vs. NCCU, 12/7/25*
FG% .577	.542	Ast: 6 vs. NCCU, 12/7/25*
FT% .648	.741	Stl: 4 vs. NCCU, 12/7/25*

MADINA OKOT

6-6 • Sr. • C • Mumias, Kenya

mah-DEE-nuh oh-COAT

11



Last Gm: 10 pts, 9 rebs, 11 mins vs. NCCU
Size and strength inside, shooting range ... leads NCAA with 7 dbl-dbls ... NCAA top-20 in rpg, FG% ... vs. ranked – 13.7 ppg, .563 FG%, 13.0 rpg.

2025-26	Career*	Career Highs
PPG 14.8	12.1	P: 26 at UMES, 12/20/24*
RPG 11.1	9.9	R: 23 at Vandy, 2/13/25*
BPG 1.7	1.3	B: 4 vs. BGSU, 11/7/25**
FG% .610	.638	A: 3 v. Wnthrop, 11/19/25**
FT% .690	.644	S: 5 vs. Ala. St., 11/13/24*

ADHEL TAC

6-5 • So. • F • Grand Prairie, TX

uh-DELL TACK

15



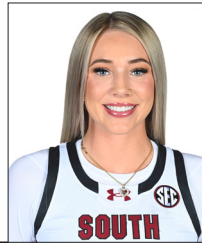
Last Gm: 2 pts, 3 rebs, 1 blk vs. NCCU
High motor, great teammate ... growing strength and confidence after long injury recovery to start college ... first career start vs. NC Central (Dec. 7).

2025-26	Career	Career Highs
PPG 3.2	2.0	P: 11 v. Queens, 11/23/25
RPG 3.9	2.3	R: 10 v. Queens, 11/23/25
BPG 0.8	0.3	B: 2 vs. Texas, 11/27/25
FG% .600	.478	A: 2 v. BGSU, 11/7/25
FT% .647	.636	S: 1 v. Queens, 11/23/25*

CHLOE KITTS

6-2 • Sr. • F • Oviedo, FL

21



2025-26: Out for season, October ACL surgery
Tenacious; improved physical, mental strength ... in 2025 SEC Tourn and NCAA Regional MVP, All-American, team's top rebounder.

2024-25	Career	Career Highs
PPG 10.2	8.1	Pt: 25 vs. Vandy, 3/7/25
RPG 7.7	5.8	Rb: 14 vs. Mich., 11/4/24*
APG 1.9	1.5	Blk: 5 vs. Mizzou, 2/8/24
FG% .520	.523	Ast: 10 at Miss., 2/27/25
FT% .798	.734	Stl: 4 at Miss., 2/27/25

AYLA McDOWELL

6-1 • Fr. • G • Cypress, TX

EYE-luh

24



Last Gm: 16 pts, 5 3FGs, 2 rebs, 27 mins vs. NCCU
3-level scorer, great size and athleticism ... over 2,700 points in high school ... McDonald's All-American, #15 in 2025 Class ... Brazil National Team.

2025-26	Career	Career Highs
PPG 5.3	5.3	Pt: 11 vs. BGSU, 11/7/25
APG 0.4	0.4	Rb: 4 v. Wnthrop, 11/19/25
FG% .471	.471	Ast: 1 at UofL, 12/4/25*
3FG% .474	.474	Stl: 2 vs. BGSU, 11/7/25
FT% .800	.800	3FG: 2 vs. BGSU, 11/7/25

RAVEN JOHNSON

5-9 • Sr. • G • Atlanta, GA

25



Last Gm: 7 pts, 5 assts, 6 stls, 3 rebs vs. NCCU
Great instincts, good decision-maker ... 13th NCAA in apg (5th SEC), 8th in A:TO (3.8, 3rd SEC) ... 2 dbl-dbls ... 2024 All-SEC, 2025 SEC All-Defensive.

2025-26	Career	Career Highs
PPG 8.8	5.9	Pt: 18 v. SDSU, 11/20/23
RPG 4.3	4.1	Rb: 15 at Tenn., 2/15/24
APG 6.6	3.8	A: 17 v. Clems., 11/16/23
FG% .471	.400	Stl: 6 vs. Auburn, 2/2/25
FT% .800	.661	B: 2 v. Queens, 11/23/25*

MARYAM DAUDA

6-4 • Sr. • F • Bentonville, Ark.

MARE-ee-um DOW-duh

30



Last Gm: 6 pts, 7 rebs, 3 blks, 2 assts vs. NCCU
Keeps defenders off balance, great footwork inside ... growing confidence ... 5 games 5+ rebounds ... 12.6 mpg ... played in 34 games last season.

2025-26	Career*	Career Highs
PPG 3.1	5.0	Pt: 22 at Tulsa, 3/21/24*
RPG 4.3	3.7	Rb: 13 v. Miss St, 1/11/24*
FG% .400	.427	Blk: 10 at Ala., 1/14/24*
3FG% .000	.283	Ast: 5 at Ala., 1/14/24
FT% .667	.745	Stl: 4 v. UGa, 1/7/24*

AGOT MAKEER

6-0 • Fr. • G • Thunder Bay, Ontario

uh-GOT muh-KEER

44



Last Gm: 2 rebs, 3 mins vs. Texas
Size, speed, versatility ... USWBA Freshman of the Year watch list ... McDonald's All-American, No 6 in 2025 Class ... Team Canada U17, U19.

2025-26	Career	Career Highs
PPG 5.9	5.9	P: 12 v. Wnthrop, 11/19/25*
APG 1.1	1.1	R: 7 v. Wnthrop, 11/19/25
FG% .439	.439	A: 4 v. Wnthrop, 11/19/25
3FG% .250	.250	S: 2 v. Wnthrop, 11/19/25
FT% .778	.778	B: 3 vs. GCU, 11/3/25

DAWN STALEY

At SC: 484-111 (18th season)

Career: 656-191 (26th season)

HC



- 3 National Championships, including 10th undefeated title season in NCAA history (2024)
- 7 Final Fours in last 10 NCAA Tournaments
- 9 SEC Regular-Season Championships
- 9 SEC Tournament Championships
- 9th in winning percentage (.774) among active NCAA Div. I coaches, 10th all-time
- 12 WNBA Draft picks since 2020 – more than any other program in that time

* indicates includes games at previous NCAA Div. I institution

* indicates has happened multiple times, most recent listed

Facility: Colonial Life Arena (18,000)

Starters Returning/Lost: 7/6

WNIT Record: 6-4

YouTube: [YouTube.com/GamecocksOnline](https://www.youtube.com/GamecocksOnline)

	Total	Home	Road	Neut.
Overall	W2	W10	W3	L1
SEC	W6	W48	W3	—
Non-Conference	W9	W9	L1	W2
Ranked Teams	W1	W1	W1	L1

- 5 straight NCAA Final Four appearances (2021-2025) is the longest active streak and the second-longest streak in tournament history.
- 3 National Championships are third most by a single program in tournament history.
- 10th undefeated National Championship season in NCAA history (2023-24)
- 84 AP No. 1 rankings are third-most by a program in the poll's history.
- 123 straight AP Top-10 rankings is the longest active streak – more than three times the next program
- 11 Gamecocks have earned All-America status at least once in their careers

GAMECOCKS IN THE RANKINGS (thru games of 12/10)

Team	SEC	NCAA	Actual	Joyce Edwards	SEC	NCAA	Actual
Scoring Offense	4	10	90.1	Points per game	3	29	19.4
Scoring Defense	7	29	54.6	FG percentage	8	33	.577
Scoring Margin	3	9	+35.5	Blocks per game	8	73	1.5
Field Goal Percentage	2	4	.530				
Field Goal %age Def.	3	10	.319	Raven Johnson	SEC	NCAA	Actual
3-Point FG %age	2	3	.413	Assists per game	5	13	6.6
3-Point FG %age Def.	3	56	.263	Assist-to-turnover ratio	3	8	3.7
3-Point FG Made/Gm.	12	203	5.9				
Free Throw Percentage	6	93	.734	Tessa Johnson	SEC	NCAA	Actual
Free Throws Made/Gm.	5	27	16.0	3-Point FG percentage	2	19	.488
Rebounding Average	4	18	44.6	3-Point FGs made/game	5	109	2.3
Rebounding Margin	2	6	+14.2				
Offensive Rebound Avg.	10	71	13.9	Ta'Niya Latson	SEC	NCAA	Actual
Assists Per Game	4	13	19.6	Points per game	8	7	17.8
Steals Per Game	13	211	8.1	FG percentage	10	62	.538
Turnover Margin	12	54	+5.0	FT percentage	10	144	.813
Turnovers Per Game	4	17	12.3				
Assist-to-Turnover Ratio	4	11	1.6	Madina Okot	SEC	NCAA	Actual
Blocked Shots Per Game	2	4	7.2	Rebounds per game	1	10	11.1
Bench Points Per Game	14	252	17.3	FG percentage	5	16	.610
Home Attendance Avg.	1	1	15,927	Blocks per game	5	50	1.7
				Off. rebs. per game	4	—	3.7
				Double-doubles	1	1	

SEC Player of the Week (12/2-8)

Columbia – W 69-52 vs. #8/10 Southern Cal (Nov. 15), L 64-66 vs. #4/4 Texas (Nov. 27), W 79-77 at #22/21 Louisville (Dec. 4).

Schedule Sketch

South Carolina's schedule continues to challenge and prepare the team for the postseason. This year's slate features 12 games against teams ranked in the current top 25 – five home, five road and two neutral sites. Four of the 10 games are against teams in the top 10.

The non-conference schedule is highlighted by three ranked matchups – vs. #8/10 Southern Cal (W, 69-52), vs. #4/4 Texas (L, 64-66) and at #22/21 Louisville (W, 79-77).

In the NET rankings released on Dec. 9, South Carolina is ranked fifth and has 11 Quad 1 games on the schedule, including three non-conference matchups.

Ranking Review

South Carolina is currently ranked No. 3 in both the AP Poll and the USA Today/WBCA Coaches' Poll.

It marks the Gamecocks' 123rd consecutive entry in the AP top 10, beginning with the 2019-20 preseason poll. It is the longest active streak and the eighth longest in the history of that poll (7th is 137, Baylor). Their 254 straight appearances in the AP Poll, dating back to Dec. 10, 2012, mark the second-longest active streak in the nation and is the tied for the sixth longest all-time (5th, Duke/Stamford, 312).

In the USA Today/WBCA Coaches' Poll, South Carolina has been in the top 10 since claiming the No. 10 spot in the 2019-20 preseason poll.

Staley's Standard

In her 26th season as a head coach, Dawn Staley has a .774 (656-191) winning percentage, which ranks ninth in the nation among active head coaches and 10th all-time. With three national championships, she ranks fourth among head coaches all-time in NCAA titles.

Staley is one of just two women's basketball coaches to lead their teams to multiple 40-game win streaks in NCAA history with the Gamecocks' program-record 43-game streak (2023-24) ranking seventh longest in

NCAA history. She is one of just 11 men's or women's basketball coaches to win at least three NCAA National Championships and the first Black head coach to win multiple titles. She is one of seven coaches to lead a team to at least four NCAA National Championship games.

Now in her 18th season with the Gamecocks, Staley is the program's all-time winningest coach (484) with a program-record 14 postseason appearances. She accounts for all seven of the Gamecocks' Final Four appearances and the only NCAA National Championships in program history. Her leadership on the court and in the community resulted in the City of Columbia commissioning a statue of Staley, which stands a short distance from the Gamecocks' home Colonial Life Arena.

Staley's nine SEC regular-season championships trail only Pat Summitt's 16 in league history, and her seven SEC Coach of the Year awards trail Summitt's league record by just one. Staley's 214 SEC regular-season wins are the most among active league coaches and third all-time – behind just Summitt (Tennessee, 306) and Andy Landers (Georgia, 273). She was the second-fastest to the 200-win mark in league history with her 255 games trailing Summitt's mark of 229. Staley's .793 SEC winning percentage (214-56) is second only to Summitt (.874) among coaches in the league at least five seasons. She owns the SEC record for consecutive regular-season conference victories with a 57-game streak that began in the 2021-22 season and ended in 2024-25.

Glass Shattering

South Carolina is sixth in the nation in rebounding margin (+14.2) and 18th in rebounding average (44.6). They have corralled 44.1 percent of their missed shots for an offensive rebounding percentage that ranks eighth.

Senior Madina Okot is 10th in the nation with an SEC-best 11.1 rebounds per game, and her 3.7 offensive rebounds per game are fourth in the SEC. She has been in double figures in the rebounds in all but two games.

Sophomore Joyce Edwards is next in line at 6.1 rebounds per game, and senior guard Raven Johnson's 4.3 per game, including a season-high 11 against #8/10 Southern Cal (Nov. 15), leads the guards.

Efficiency Report

A focus for South Carolina on both sides of the ball is efficiency – creating their own and disrupting their opponents'. This season, they are among the best in the nation in both categories – ranking fourth in the NCAA in field goal percentage (.530) and 10th in field goal percentage defense (.319).

Individually, four Gamecock starters are among the SEC's top 15 in field goal percentage – Madina Okot (5th, .610), Joyce Edwards (8th, .577), Ta'Niya Latson (10th, .538) and Tessa Johnson (14th, .511). In all, five Gamecocks are shooting at least 50.0 percent from the field.

From 3-point range, the Gamecocks are third in the nation with a .413 shooting percentage. Tessa Johnson is among the nation's most accurate outside shooters with her 48.8 percent accuracy ranking 19th in the nation (2nd in SEC). Her 2.3 made 3s per game are fifth in the SEC. She is the only player ranked among the league's top 15 in overall and 3-point shooting percentage.

Paint Production

South Carolina has long controlled the paint, and this season is no different, even with a guard-dominated roster.

With 55.0 percent of the Gamecocks' points coming in the paint, the Gamecocks are second in the nation with 49.6 paint points per game and are out-scoring

NATIONAL RANKINGS

Associated Press Poll (Dec. 8)

1. UConn	9-0
2. Texas	10-0
3. South Carolina	9-1
4. UCLA	9-1
5. LSU	10-0
6. Michigan	8-1
7. Maryland	11-0
8. TCU	10-0
9. Oklahoma	9-1
10. Iowa State	10-0
11. Iowa	9-0
12. North Carolina	9-2
13. Baylor	9-1
14. Vanderbilt	9-0
15. Kentucky	10-1
16. Southern Cal	7-2
17. Ole Miss	8-1
18. Tennessee	6-2
19. Notre Dame	6-2
20. Washington	8-1
21. Ohio State	7-1
22. Louisville	8-3
23. Oklahoma State	10-1
24. Nebraska	9-0
25. Michigan State	8-1

USA Today/WBCA Coaches' Poll (Dec. 9)

1. UConn	9-0
2. Texas	10-0
3. South Carolina	9-1
4. UCLA	9-1
5. LSU	10-0
6. Maryland	11-0
7. TCU	10-0
8. Michigan	8-1
9. Oklahoma	9-1
10. Iowa State	10-0
11. North Carolina	9-2
12. Iowa	9-0
13. Vanderbilt	9-0
14. Baylor	9-1
15. Kentucky	10-1
16. Ole Miss	8-1
17. Southern Cal	7-2
18. Tennessee	6-2
19. Notre Dame	6-2
20. Louisville	8-3
21. Ohio State	7-1
22. Oklahoma State	10-1
23. Washington	8-1
24. Michigan State	8-1
25. Alabama	10-0

opponents in that space by an average of 27.8 points, including a +10.7 edge against ranked opponents. They are shooting 63.1 percent in the paint compared to opponents' 40.7 percent accuracy.

Block Party

The Gamecocks have been a premier shot blocking program since their first national championship in 2017. They ranked in the top 15 in blocks per game that season and have only climbed higher in the eight subsequent seasons, including four years leading the nation in the stat and twice coming in second. Beyond the number of blocks,

THE STALEY ERA

Wins

30-Win Seasons	8
25-Win Seasons	13
20-Win Seasons	14
Winning Seasons	15

National Rankings

Weeks in the AP Top 25	259
Weeks in the AP Top 10	214
Weeks in the AP Top 3	139
Weeks at AP No. 1	84

Postseason

NCAA Tournament Appearances	13
NCAA Sweet 16s	12
NCAA Final Fours	7
National Championships	3

In the SEC

Regular-Season Championships	9
Regular-Season Top 3 Finishes	13
Tournament Championships	9

GAMECOCKS IN 2025-26 NATIONAL POLLS

Poll	Pre	11/10	11/17	11/24	12/1	12/8	12/15	12/22	12/29	1/5	1/12	1/19	1/26	2/2	2/9	2/16	2/23	3/2	3/9	3/16
Associated Press	2	2	2	2	3	3														
Coaches	2	2	2	2	3	3														

their block percentage has led the nation three seasons.

This season, South Carolina is fourth in the nation with 7.2 blocks per game, including 4.3 against ranked opponents. The Gamecocks have blocked 17.3 percent of opponents' 2-point attempts, which ranks fourth in the nation, according to Her Hoop Stats.

Madina Okot tops the individual list with 1.7 blocks per game to rank fifth in the SEC. Joyce Edwards is not far behind at 1.5 per game (8th SEC). Gamecock guards have added 2.5 blocks per game to the team's average.

Quarter Breakdown

South Carolina has been started and finished strong this season with matching +9.7 scoring margins in the first and fourth quarters. The offense has been most efficient in the final period when the Gamecocks are shooting 56.2 percent. Opponents have been least efficient in the fourth quarter, shooting just 25.9 percent in the final 10 minutes.

Here's a more detailed look at the quarter-by-quarter production for the Gamecocks this season:

	SC-Opp	Avg. Pts.	SC-Opp	Avg. Reb.
Qtr.	Avg. Pts	Margin	Avg. Reb	Margin
1	23.9-14.2	+9.7	10.0-8.1	+1.9
2	22.2-13.2	+9.0	13.3-7.5	+5.8
3	22.5-15.4	+7.1	11.0-7.1	+3.9
4	21.5-11.8	+9.7	10.3-7.7	+2.6

Individually, four Gamecocks have scored double digits in a single quarter a combined eight times – Joyce Edwards (3), Tessa Johnson (2), Ta’Niya Latson (2), Madina Okot (1). The top single-quarter individual scoring this season is 13 points by Latson in the third and fourth quarters against NC Central (Dec. 4).

First Watch

Gamecocks have dominated the many national award watch lists that are announced each preseason.

South Carolina is one of three schools with a player on each of the Naismith Hall of Fame Women's Starting Five watch lists. And one of two programs with five entries on the Wooden Award Top 50 Preseason Watchlist.

Three Gamecocks – Joyce Edwards, Raven Johnson, Ta’Niya Latson – are on the watch lists for the Naismith Trophy, the Wooden Award and the USBWA's Ann Meyers Drysdale Player of the Year award. South Carolina is one of two schools with three players on all three lists.

Edwards and Latson are also among the 20 players on the Wade Trophy Watch List, which is the WBCA's national player of the year award.

Latson drew preseason All-America honors from both the Associated Press and USA Today. Edward earned a spot on the USA Today Preseason All-America Second Team.

The pair was also ranked on ESPN's list of the top 25 players in the NCAA this season. Latson came in at #7 with Edwards close behind at #11, making South Carolina one of two programs with multiple players in the first 11 places.

Agot Makeer is on the list for the Tamika Catchings Award, the USBWA's National Freshman of the Year. and on the Wooden Award watch list, which also recognized senior Chloe Kitts despite her season-ending injury.

That's So Raven

Senior point guard Raven Johnson has been at the tip of the spear for the Gamecocks on both sides of the ball and has led the team to nothing but winning.

DOUBLE-DOUBLES

Joyce Edwards (2)			
11/15	vs. #8/10 Southern Cal	17 pts/10 rebs	
12/7	NC Central	25 pts/10 rebs	
Raven Johnson (2)			
11/7	Bowling Green	11 pts/11 assts	
11/15	vs. #8/10 Southern Cal	14 pts/11 rebs	
Madina Okot (7)			
11/7	Bowling Green	13 pts/11 rebs	
11/11	Clemson	12 pts/12 rebs	
11/19	Winthrop	23 pts/11 rebs	
11/23	Queens	14 pts/12 rebs	
11/26	vs. Duke	23 pts/13 rebs	
11/27	vs. #4/4 Texas	12 pts/11 rebs	
12/4	at #22/21 Louisville	23 pts/13 rebs	
Adhel Tac (1)			
11/23	Queens	11 pts/10 rebs	

In Johnson's fourth full season, South Carolina is 116-6 with her in the lineup (missed one game each in the 2022-23 and 2023-24 seasons), including a 36-4 mark against ranked teams. That stretch features three trips to the Final Four, including a National Championship (2024) and runner-up finish (2025), three SEC Regular-Season titles and three SEC Tournament championships in the three full seasons of her career.

Johnson is seventh in program history in career assists (476 – 6th is Lisa Diaz, 498) and fifth in the category for SEC play (166). She owns three of the top seven single-

GAMES LED TEAM IN...

Scoring	2025-26	Career	Record	Rebounding	2025-26	Career	Record	Assists	2025-26	Career	Record
Joyce Edwards	5	21	18-3	Madina Okot	8	32*	22-10*	Raven Johnson	7	60	58-2
Ta’Niya Latson	4	72*	52-20	Raven Johnson	1	11	10-1	Tessa Johnson	2	7	7-0
Madina Okot	2	10*	9-1*	Joyce Edwards	1	7	6-1	Joyce Edwards	2	3	3-0
Chloe Kitts	0	10	10-0	Chloe Kitts	0	28	26-2	Ta’Niya Latson	1	50*	33-17*
Tessa Johnson	0	5	5-0	Ta’Niya Latson	0	6*	5-1*	Chloe Kitts	0	8	8-0
Maryam Dauda	0	5*	1-4	Maryam Dauda	0	5*	2-3	Maddy McDaniel	0	5	4-1

* indicates includes games at previous NCAA Div. I program

MISCELLANEOUS STATS

Triple-Double	2025-26	Career	Record	10+ Points	2025-26	Career	Record	10+ Assists	2025-26	Career	Record
Chloe Kitts	0	1	1-0	Joyce Edwards	10	37	34-3	Raven Johnson	2	3	3-0
Ta’Niya Latson	0	1*	1-0*	Ta’Niya Latson	9	95*	68-27*	Ta’Niya Latson	0	4*	4-0*
Double-Doubles	2025-26	Career	Record	Madina Okot	9	31*	26-5*	Chloe Kitts	0	1	1-0
Madina Okot	7	19*	16-3*	Tessa Johnson	7	32	31-1	5+ Assists	2025-26	Career	Record
Joyce Edwards	2	6	6-0	Raven Johnson	6	28	27-1	Raven Johnson	7	44	43-1
Raven Johnson	2	3	3-0	Agot Makeer	2	2	2-0	Ta’Niya Latson	2	37*	29-8*
Adhel Tac	1	1	1-0	Ayla McDowell	2	2	2-0	Joyce Edwards	2	3	3-0
Chloe Kitts	0	17	17-0	Adhel Tac	1	1	1-0	Tessa Johnson	1	6	6-0
Ta’Niya Latson	0	5*	5-0*	Chloe Kitts	0	43	43-0	Chloe Kitts	0	5	5-0
Maryam Dauda	0	2*	1-1	Maryam Dauda	0	22*	12-10	Maddy McDaniel	0	2	2-0
40+ Points	2025-26	Career	Record	Maddy McDaniel	0	1	1-0	5+ Blocks	2025-26	Career	Record
Ta’Niya Latson	0	1*	1-0*	20+ Rebounds	2025-26	Career	Record	Maryam Dauda	0	1*	1-0
Ta’Niya Latson	1	21*	18-3*	Madina Okot	0	1*	1-0*	5+ Steals	2025-26	Career	Record
20+ Points	2025-26	Career	Record	10+ Rebounds	2025-26	Career	Record	Raven Johnson	1	7	7-0
Joyce Edwards	5	10	10-0	Madina Okot	8	25*	19-6*				
Ta’Niya Latson	4	66*	51-15*	Joyce Edwards	2	6	6-0				
Madina Okot	3	5*	5-0*	Raven Johnson	1	4	4-0				
Tessa Johnson	1	2	2-0	Adhel Tac	1	1	1-0				
Chloe Kitts	0	4	4-0	Chloe Kitts	0	21	21-0				
Maryam Dauda	0	1*	0-1	Maryam Dauda	0	5*	4-1				
				Ta’Niya Latson	0	3*	3-0*				

* indicates includes games at previous NCAA Div. I program

season assist-to-turnover ratios in program history, including a program-record 3.33 mark in SEC play in 2024-25. Her current career 2.83 A:TO (476:168) is well ahead of the current program record of 2.55 by WNBA veteran Tyasha Harris (2017-20).

The powerful guard makes her presence felt on the glass as well, averaging 4.1 rebounds for her career, and she has been the team's top rebounder in 11 games, including this season's opener against Grand Canyon (Nov. 3).

This season, Johnson is 13th in the nation and fifth in the SEC in assists per game (6.6), including a pair of double-digit assist games. She is eighth in the nation and third in the SEC with a 3.7 assist-to-turnover ratio. Her stat stuffing

includes 8.8 points, 4.3 rebounds and 1.7 steals per game. She is shooting 47.1 percent from the field, including 1.7 percent from 3-point range – both career-best numbers. Against ranked opponents, her numbers rise to 10.7 points per game on 52.0 percent shooting, 60.0 percent from 3-point range, and 5.0 rebounds per game.

Johnson has a pair of double-doubles this season in two different ways – 11 points, 11 assists vs. Bowling Green; 14 points, 11 rebounds vs. #8/10 Southern Cal.

Let Us Re-Joyce

Sophomore forward Joyce Edwards announced her presence on the college stage last season as the

Gamecocks' top scorer (12.7 ppg) with a team-high 16 games leading the team in points and five 20-point outings.

The production made her just the third freshman in program history to earn First-Team All-SEC honors, and she was an All-America honorable mention selection. This season, she is on the watch lists for every national player of the year award and the Katrina McClain Power Forward of the Year list as well.

Edwards is living up to the predictions as her team-high 19.4 points per game rank third in the SEC (29th in the nation), including a team-best five 20-point outings, which already match her freshman-year total. Her scoring has come on 57.7 percent field goal shooting, which is eighth in the league. Her 91.7 percent (11-of-12) accuracy against Bowling Green (Nov. 7) was the fourth-best shooting performance in Gamecock history and the best since Aliyah Boston's perfect 13-of-13 outing in Nov. 2021.

She is stuffing the box score beyond scoring, averaging 2.9 assists per game, including two six-assist outings, and upping her rebounding to 6.1 per game.

Edwards was named SEC Player of the Week (11/11-17) in the season's second week after leading the Gamecocks to a pair of wins, including her double-double in a win over #8/10 Southern Cal (Nov. 15).

Edwards' success this season comes after a summer of representing the United States in both 3x3 and 5-on-5 competitions. After claiming a title at the FIBA 3x3 Nations League Americas Conference 2 event, she went on to average 9.9 points at the FIBA AmeriCup to rank among the top 15 scorers in the tournament and help the Americans to a gold medal.

It's T-Time

Junior guard Tessa Johnson is shaking off her "Tournament Tessa" moniker to bring "Trusted Tessa" out every time she steps on the court and on both sides of the ball while adapting to a starting role this season.

After an offseason focused on her physical conditioning and how nutrition multiplies that effort, Johnson is logging a team-high 32.0 minutes per game (11th in SEC) and seeing her scoring and efficiency rise to career-best levels.

Johnson's 13.1 points per game are fourth on the team, and she is tied for the team lead with 15.0 points per game against ranked opponents. She is the only player ranked among the SEC's top 15 in both overall and 3-point field goal percentage. Her .488 3-point percentage ranks second in the league and 19th in the nation, while she is 14th in the SEC with 51.1 percent overall accuracy. Her 2.3 made 3s per game are fifth in the SEC. She is also handing out a career-best 2.9 assists per game.

Johnson turned in career-high numbers last season with 8.4 points and 1.5 assists per game. That production came after a freshman year that saw her shine in the most crucial moments of the team's undefeated run to the 2024 National Championship. She averaged 14.0 points on 58.8 percent shooting in the final weekend of the season, including a team-best 19 points in the title game to earn a spot on the NCAA Final Four All-Tournament Team.

Changes in Lat-itude

The top scorer in the nation last season, senior guard Tai'Niya Latson decided to join South Carolina for her final college season because she knew head coach Dawn Staley and the Gamecocks had what she needed to challenge herself to expand areas of her game she was not able to hone at Florida State. Without the pressure of being the sole focal point on offense, Latson's efficiency is skyrocketing and her defensive skills are steadily expanding.

Named an AP Preseason All-American and to the watch lists of every national player of the year award, Latson improved her strength in the offseason, which has helped her make strides defensively, and she is seeing the court better on offense.

TEAM SPECIALTY STATS

		Pts. in Paint	Pts. Off TOs	2nd Chance Pts	Fast Break Pts
11/3	GCU	40-18	22-10	14-15	32-2
11/7	BGSU	66-18	21-13	20-4	37-2
11/11	Clem.	36-18	11-13	16-2	7-3
11/15	vs SoCal	44-28	16-9	15-7	11-9
11/19	Winthrop	70-20	26-8	27-17	33-7
11/23	Queens	66-12	22-12	11-13	56-13
11/26	vs. Duke	58-28	18-13	14-6	24-8
11/27	vs. TX	38-28	18-18	8-12	7-8
12/4	at UL	36-30	11-13	6-10	0-6
12/7	NCCU	42-18	42-9	20-2	38-12
12/14	PSU				
12/18	at USF				
12/20	at FGCU				
12/28	Prov.				
1/1	Ala.				
1/4	at FL				
1/8	at Ark.				
1/11	GA				
1/15	TX				
1/18	at CSU				
1/22	at OK				
1/25	Vandy				
1/29	at Aub.				
2/2	at TAM				
2/5	M State				
2/8	TN				
2/14	at LSU				
2/19	at AL				
2/22	OM				
2/26	MO				
3/1	at KY				
Season Avg.		49.6-21.8	20.7-11.8	15.1-8.8	24.5-7.0
SEC Avg.					

STARTERS VS. BENCH

		SC Starters	Opp. Starters	SC Bench	Opp. Bench
11/3	GCU	75	34	19	20
11/7	BGSU	79	25	35	22
11/11	Clem.	57	28	8	9
11/15	vs SoCal	63	38	6	14
11/19	Winthrop	81	48	25	8
11/23	Queens	88	31	33	18
11/26	vs. Duke	72	44	11	22
11/27	vs. TX	62	49	2	17
12/4	at UL	75	43	4	34
12/7	NCCU	76	34	30	8
12/14	PSU				
12/18	at USF				
12/20	at FGCU				
12/28	Prov.				
1/1	Ala.				
1/4	at FL				
1/8	at Ark.				
1/11	GA				
1/15	TX				
1/18	at CSU				
1/22	at OK				
1/25	Vandy				
1/29	at Aub.				
2/2	at TAM				
2/5	M State				
2/8	TN				
2/14	at LSU				
2/19	at AL				
2/22	OM				
2/26	MO				
3/1	at KY				
Season Avg.		72.8	37.4	17.3	17.2
SEC Avg.					

2025-26 SCORING DIFFERENTIALS

All Games

Largest lead in a win.....	by 74 (119-45), 4th-1:12, vs. Queens, 11/23
Largest deficit overcome to win.....	by 5 (68-73), 4th-4:23, at #22/21 Louisville, 12/4
Largest deficit in a loss.....	by 8 (19-27), 2nd-6:57, vs. #4/4 Texas, 11/27
Best Scoring Run.....	30 points, 3rd-2:13, vs. Queens, 12/7
Best Scoring Run Against.....	9 points, 3rd-5:18, vs. Duke, 11/26
Most Lead Changes.....	13 at #22/21 Louisville, 12/4
Most Times Tied.....	8 vs. #4/4 Texas, 11/27
Most minutes trailed.....	27:18 vs. #4/4 Texas, 11/27

vs. Ranked Opponents

Largest lead in a win.....	by 17 (69-52), 4th-0:30, vs. #8/10 Southern Cal, 11/15
Largest deficit overcome to win.....	by 5 (68-73), 4th-4:23, at #22/21 Louisville, 12/4
Largest deficit in a loss.....	by 8 (19-27), 2nd-6:57, vs. #4/4 Texas, 11/27
Best Scoring Run.....	8 points (2nd-9:19, at #22/21 Louisville, 12/4
Best Scoring Run Against.....	8 points, 1st-1:31, vs. #8/10 Southern Cal, 11/15
Most Lead Changes.....	13 at #22/21 Louisville, 12/4
Most Times Tied.....	8 vs. #4/4 Texas, 11/27
Most minutes trailed.....	27:18 vs. #4/4 Texas, 11/27

Latson is eighth in the SEC in scoring at 17.8 points per game and 10th in field goal percentage, hitting 53.8 percent, including 54.2 percent from 3-point range. Her 3.3 assists per game (15th in SEC) are adding another 7.6 points per game, meaning she has her hands on 28.2 percent of the Gamecocks' total offense.

M.O.-mentum

After just starting the sport at 17 years old, 6-foot-6 center Madina Okot is becoming one of the most dominant centers in the sport. Last season at Mississippi State, she was the SEC's top percentage shooter (.649) and fourth in rebounding. With a year of eligibility remaining, she chose to come to South Carolina with the mindset to be the next entry in the Gamecocks' legacy of dominant post players.

The quiet Okot has drawn praise from her head coach on her strength and agility and been challenged to show her dominance every time she steps on the court. After an average season opener, Okot has been rising to that challenge, and both her production and her comfort level have been growing exponentially.

Okot is leading the nation with seven double-doubles and her SEC-best 11.1 rebounds per game are 10th in the nation. Shooting 61.0 percent from the field, including three games over 70.0 percent, she is fifth in the SEC and 16th in the nation in that category. Her 1.7 blocks per game are fifth in the SEC, and her 3.7 offensive boards per game are fourth.

Agot Send

Freshman guard Agot Makeer was ranked sixth in the Class of 2025 and drew McDonald's All-America and honorable mention Naismith All-America honors out of Montverde Academy (FL). She opened her college career on the USWBA Tamika Catchings Freshman of the Year and the Wooden Award watch lists.

After leading Montverde to a runner-up finish at the Chipotle High School National Championships, Makeer, suited up for Canada at the FIBA U19 World Cup, helping it to a fourth-place finish with 10.3 points, including 46.2 percent 3-point shooting, and 4.9 rebounds per game.

The long, lithe Makeer is averaging 5.9 points to go along with 3.6 rebounds per game.

Ay-aye Captain

The #15 player in the 2025 Class, freshman guard Ayla McDowell is a McDonald's All-American and a three-time district MVP out of Cypress, Texas, who's international

experience with Brazil's national team has helped smooth her transition to college basketball.

McDowell amassed over 2,700 career points in high school before donning a Brazil jersey at the FIBA AmeriCup and the FIBA U19 World Cup over the summer. For the U19 team, she was the top scorer with a 16.8 scoring average while averaging 4.5 rebounds and 2.7 steals.

Coaches have praised her competitive fire and her predictability on the defensive end, meaning she is trusted to make the right play. On the other end of the court, McDowell is finding her spots in the flow of the offense, learning when to shoot and when to defer.

McDowell is scoring 5.3 points per game on 47.1 percent shooting, including 47.4 percent from 3-point range, and she is hitting 80.0 percent of her free throws.

In the last week, McDowell's confidence has soared. She hit a clutch 3 and came up with a pair of offensive rebounds at #22/21 Louisville (Dec. 4). In the next game, she poured in 16 points, including five 3s against NC Central (Dec. 7).

Everybody's All-American

The Gamecocks' 11-woman roster includes eight McDonald's All-Americans – Maryam Dauda, Joyce Edwards, Raven Johnson, Tessa Johnson, Ta'Niya Latson, Agot Makeer, Maddy McDaniel and Ayla McDowell.

At South Carolina, Staley has coached 29 McDonald's All-Americans, including 22 who signed as freshmen.

What's Next

Just as the 2025-26 season began, event organizers were already releasing plans for the Gamecocks' 2026-27 season. South Carolina will be making its second appearance at all four events.

The Gamecocks will return to Paris for Oui Play 2026, facing Maryland in the season opener on Nov. 2. The return game of the Sprouts Farmers Market The Real SC game is set for Bon Secours Wellness Arena in Greenville, S.C., on Nov. 15. The Gamecocks are slated to take on UConn in the 2026 Basketball Hall of Fame Women's Showcase on Nov. 24. And the Charlotte Sports Foundation announced South Carolina's three-year commitment to the Ally Tipoff with games against North Carolina (2026), UConn (2027) and NC State (2028).

Who's Next

Head coach Dawn Staley signed a pair of top-20 players in the early signing period in forwards Kelsi Andrews and Kaeli Wynn. Both are on the Naismith Trophy Girls' High School Player of the Year watch list, released in November.

The 6-foot-3 Andrews is the #18 player in the Class of 2026 after helping lead IMG Academy to a high school national championship in 2025 with a 12-point, 13-rebound performance in the title game. She has also helped the U.S. to gold medals in the 2024 FIBA U17 World Cup and the 2023 FIBA U16 Americas Championship.

Wynn is the #17 player in the 2026 Class, standing 6-foot-2 and coming from basketball coach parents. She was a first-team all-state selection as a junior, averaging 17 points, 7.1 rebounds and 2.7 assists at Mater Dei High School, which was ranked No. 1 in the nation throughout the season.

WNBA Pipeline

Dawn Staley's status as a dream merchant is most evident by the steady stream of Gamecocks being drafted into and enjoying lengthy careers in the WNBA. Since her first Gamecock was drafted in 2015, she has seen 18 have their name called on draft night – the second-most by a program in that time.

Staley's numbers have skyrocketed since 2020 with an NCAA-best 12 draft picks since then, including a best-in-the-nation six first-round selections in that time.

In proof Staley sends players to the league ready, six Gamecocks have earned All-Rookie Team honors, including three WNBA Rookies of the Year – Allisha Gray (2017), Aja Wilson (2018), Aliyah Boston (2023).

Great Gamecock Fans

South Carolina fans have led the nation in average attendance for the last 11 seasons, although the NCAA does not officially recognize the COVID-limited attendance in the 2020-21 season. The Gamecocks are on track to continue that streak after selling out of season tickets for the second time in as many seasons and opening the 2025-26 slate by hosting the six highest-attended games of the season to average 15,976 fans per game.

The Gamecocks have had at least one sellout of their 18,000-seat Colonial Life Arena for eight straight seasons (excluding COVID-limited 2020-21 season) dating back to the first ever sellout of 18,000 on Feb. 8, 2016. There have been at least five sellouts in each of the last two seasons.

South Carolina's 2024-25 attendance average of 16,437 is the second-highest in the history of the NCAA, narrowly trailing Tennessee's 1998-99 average of 16,565. That mark included a program-record seven sellouts.

SEASON THEME: BEYOND MEASURE

Each year Dawn Staley chooses a theme for the team and fans to center their season around, and it often reflects not just the state of South Carolina women's basketball, but that of the game overall.

The Gamecocks' 2025-26 season theme is Beyond Measure, which centers on the value of the whole person or group beyond the commonly measured scale. A player's value to the team is not measured solely by her statline but also by a myriad of other ways she elevates her team. Championships and awards are not valued because they yield a trophy but also because they lift up a university, a city, a state. The value of the FAMS who support the team around the country is more than the value of ticket sales, but it is in the way they form a united community that supersedes all their difference.

More broadly, Beyond Measure is a reminder that the ceiling of the team and its players – and that of women's basketball as a sport – will always shatter any limitations others may place on it.

2025-26 ROSTER

No.	Name	Pos.	Ht.	Yr.	Hometown/Last School
00	Ta'Niya Latson	G	5-8	Sr.	Miami, Fla./Florida State
1	Maddy McDaniel	G	5-9	So.	Upper Marlboro, Md./Bishop McNamara
5	Tessa Johnson	G	6-0	Jr.	Albertville, Minn./Saint Michael Albertville
8	Joyce Edwards	F	6-3	So.	Camden, S.C./Camden
11	Madina Okot	C	6-6	Sr.	Mumias, Kenya / Mississippi State
15	Adhel Tac	F	6-5	So.	Grand Prairie, Texas/South Grand Prairie
21	Chloe Kitts	F	6-2	Sr.	Oviedo, Fla./DME Academy
24	Ayla McDowell	G	6-1	Fr.	Cypress, Texas/Cypress Springs
25	Raven Johnson	G	5-9	Sr.	Atlanta, Ga./Westlake
30	Maryam Dauda	F	6-4	Sr.	Bentonville, Ark./Arkansas
44	Agot Makeer	G	6-0	Fr.	Thunder Bay, Ontario / Montverde Academy (FL)

Head Coach: Dawn Staley

Assoc. Head Coach: Lisa Boyer

Assistant Coaches: Jollette Law, Wendale Farrow, Mary Wooley, Khadijah Sessions

Sports Performance Coach: Molly Binetti; **Athletic Trainer:** Craig Oates

SOUTH CAROLINA'S RECORD WHEN ...

	vs. Ranked	SEC	All
Record	2-1		9-1
Playing a ranked opponent	2-1		2-1
Playing at home			6-0
Playing on the road	1-0		1-0
Playing at neutral site	1-1		2-1
Leading at half	2-0		9-0
Trailing at half	0-1		0-1
Tied at half			0-0
Playing an overtime game			0-0
0 players score in double figures			0-0
1 player scores in double figures			0-0
2 players score in double figures			0-0
3 players score in double figures			0-0
4 players score in double figures	2-1		6-1
5 players score in double figures			1-0
More than 5 players in double figures			2-0
Starters out-score opponent's starters	2-1		9-1
Opponent's starters score equal/more			0-0
Bench out-scores opponent's bench			4-0
Opponent's bench scores equal/more	2-1		5-1
Shooting 60% or better			3-0
Shooting between 50-59%			2-0
Shooting between 40-49%	2-1		4-1
Shooting between 30-39%			0-0
Shooting lower than 30%			0-0
Opponent shoots 50% or better			0-0
Opponent shoots between 40-49%	1-1		1-1
Opponent shoots between 30-39%	1-0		3-0
Opponent shoots between 20-29%			5-0
Opponent shoots less than 20%			0-0
Shooting better than opponent	2-1		9-1
Shooting worse than/equal to opponent			0-0
Having more FTs made than opponent	1-0		8-0
Having equal/fewer FTs made than opponent	1-1		1-1
Out-rebounding opponent	1-0		8-0
Having equal rebounds as opponent	1-0		1-0
Having fewer rebounds than opponent	0-1		0-1
Having fewer TOs than opponent	1-0		7-0
Having equal TOs as opponent	1-0		1-0
Having more TOs than opponent	0-1		1-1
Attempting more FT than 3FG	2-1		9-1
Attempting equal/fewer FT than 3FG			0-0
Making 5 or more 3FGs	1-0		7-0
Making fewer than 5 3FGs	1-1		2-1
Making no 3 FGs			0-0
Attempting 15 or more 3FGs	1-0		5-0
Attempting fewer than 15 3FGs	1-1		4-1
No South Carolina players foul out	2-0		9-0
One or more SC players foul out	0-1		0-1
No opposing players foul out	2-1		5-1
One or more opposing players foul out			4-0

	vs. Ranked	SEC	All
Assist at least half of field goals made	2-1		8-1
Assist on less than half of field goals made			1-0
Scoring more pts. in paint than opponent	2-1		9-1
Scoring equal/fewer pts. in paint than opp.			0-0
Scoring more pts. off TOs than opponent	1-0		7-0
Scoring equal/fewer pts. off TOs than opp.	1-1		2-1
Scoring more 2nd-chance pts.	1-0		6-0
Scoring equal/fewer 2nd-chance pts.	1-1		3-1
Scoring more fast break pts.	1-0		8-0
Scoring equal/fewer fast break pts.	1-1		1-1
Wearing primary white uniforms			6-0
Wearing secondary (Cocky) white uniforms	0-1		0-1
Wearing black script Carolina uniforms	2-0		3-0
Wearing garnet uniforms			0-0
Playing in November	1-1		7-1
Playing in December	1-0		2-0
Playing in January			0-0
Playing in February			0-0
Playing in March			0-0
Playing in April			0-0
Playing during the day			3-0
Playing at night	2-1		6-1
Playing on Sunday			2-0
Playing on Monday			1-0
Playing on Tuesday			1-0
Playing on Wednesday			2-0
Playing on Thursday	1-1		1-1
Playing on Friday			1-0
Playing on Saturday	1-0		1-0
Margin is less than 5 pts.	1-1		1-1
Margin is between 5-9 pts.			0-0
Margin is between 10-19 pts.	1-0		2-0
Margin is between 20-29 pts.			1-0
Margin is between 30-39 pts.			0-0
Margin is between 40-49 pts.			1-0
Margin is 50 pts. or more			4-0
Having a 20-pt. scorer	1-0		7-0
Having more than one 20-pt scorer	1-0		5-0
Having a 30-pt. scorer			0-0
Scoring 49 points or less			0-0
Scoring 50-59 points			0-0
Scoring 60-69 points	1-1		2-1
Scoring 70-79 points	1-0		1-0
Scoring 80-89 points			1-0
Scoring 90-99 points			2-0
Scoring 100 points or more			3-0
Opponent scores 39 points or less			1-0
Opponent scores 40-49 points			3-0
Opponent scores 50-59 points	1-0		3-0
Opponent scores 60-69 points	0-1		1-1
Opponent scores 70-79 points	1-0		1-0
Opponent scores 80-89 points			0-0
Opponent scores 90-99 points			0-0
Opponent scores 100 points or more			0-0

2025-26 TEAM HIGH / LOW

South Carolina Highs	South Carolina Lows	Category	Opponent Lows	Opponent Highs
121 vs. Queens, 11/23*	64 vs. Texas, 11/27	Points in Game	37, Clemson, 11/11	77, at Louisville, 12/4
63 vs. Queens (2nd), 11/23	29 vs. Texas (1st), 11/27	Points in a Half	13, Clemson (2nd), 11/11	39, at Louisville (1st), 12/4 39, vs. Duke (2nd), 11/26
33 vs. Queens (4th), 11/23	10 vs. Texas, 11/27	Points in a Quarter	2, NC Central (3rd), 12/7	25, at Louisville (1st), 12/4
33 vs. Winthrop (2nd), 11/19	10 vs. Clemson (3rd), 11/11	Field Goals Made	2, Clemson (4th), 11/11	
43 vs. Queens, 11/23	25 vs. Texas, 11/27	Field Goal Attempts	14, Clemson, 11/11	31, at Louisville, 12/4
43 vs. Winthrop, 11/19		FG Percentage	54, NC Central, 12/7	74, Bowling Green, 11/7
74 vs. Duke, 11/26	57 vs. Grand Canyon, 11/3	3-Point FG Made	.229 (16-70), Queens, 11/23	.477 (31-65), at Louisville, 12/4
.662 (43-65) vs. Queens, 11/23	.408 (29-71) vs. SoCal, 11/15	3-Point FG Attempts	1, vs. Texas, 11/27	9, at Louisville, 12/4
11 vs. NC Central, 12/7	1 vs. Duke, 11/26	3-Point FG Percentage	1, vs. Southern Cal, 11/15	9, Queens, 11/23
21 vs. NC Central, 12/7	7 vs. Texas, 11/27	Free Throws Made	6, vs. Texas, 11/27	34, Grand Canyon, 11/3
.556 (5-9) vs. Clemson, 11/11	.100 (1-10) vs. Duke, 11/26	Free Throw Attempts	.071 (1-14), vs. SoCal, 11/15	400 (8-20), vs. Duke, 11/26
27 vs. NC Central, 12/7	7 vs. Southern Cal, 11/15	FT Percentage	4, NC Central, 12/7	15, vs. Texas, 11/27
27 vs. Queens, 11/23		Rebounds	4, Clemson, 11/11	
34 vs. NC Central, 12/7	10 vs. Clemson, 11/11	Assists	4, Clemson, 11/11	20, vs. Texas, 11/27
34 vs. Queens, 11/23		Steals		
800 (24-30) vs. BGSU, 11/7	.583 (7-12) vs. SoCal, 11/15	Blocked Shots	.600 (6-10), at Louisville, 12/4	833 (5-6), Bowling Green, 11/7
53 vs. Bowling Green, 11/7	32 vs. Texas, 11/27	Turnovers	24, Winthrop, 11/19	39, vs. Texas, 11/27
26 vs. Queens, 11/23	11 vs. Clemson, 11/11	Fouls	6, Grand Canyon, 11/3	17, vs. Duke, 11/26
26 vs. Bowling Green, 11/7				
16 vs. NC Central, 12/7	3 vs. Clemson, 11/11			
12 vs. Queens, 11/23	1 at Louisville, 12/4			
17 vs. NC Central, 12/7	7 vs. Duke, 11/26			
17 vs. Southern Cal, 11/15				
21 vs. Grand Canyon, 11/3	9 vs. Bowling Green, 11/7			

* indicates program record; ^ indicates Staley-era program record

2025-26 INDIVIDUAL SUPERLATIVES

Category	South Carolina	Opponent
Points in Game	32 by Ta'Niya Latson vs. NC Central, 12/7	16 by Toby Fournier, vs. Duke, 11/26 16 by Ale'Jah Douglas, Grand Canyon, 11/3
Points in a Half	26 by Ta'Niya Latson vs. NC Central (2nd), 12/7	13 by Chloe Mann, Grand Canyon (1st), 11/3
Points in a Quarter	13 by Ta'Niya Latson vs. NC Central (4th), 12/7 13 by Ta'Niya Latson vs. NC Central (3rd), 12/7	13 by Chloe Mann, Grand Canyon (2nd), 11/3
Field Goals Made	11 by Ta'Niya Latson vs. NC Central, 12/7 11 by Madina Okot, vs. Duke, 11/26 11 by Joyce Edwards vs. Bowling Green, 11/7	8 by Tajianna Roberts, at Louisville, 12/4
Field Goal Attempts	18 by Ta'Niya Latson vs. NC Central, 12/7 18 by Madina Okot vs. Duke, 11/26	18 by Tajianna Roberts, at Louisville, 12/4 18 by Jordan Lee, vs. Texas, 11/27
FG Percentage (min 5 FGM)	.917 (11-12) by Joyce Edwards vs. Bowling Green, 11/7	.600 (6-10) by Elif Istanbuluoglu, at Louisville, 12/4
3-Point FG Made	5 by Ta'Niya Latson vs. NC Central, 12/7 5 by Ayla McDowell vs. NC Central, 12/7	4 by Tierney Coleman, NC Central, 12/7 4 by Tajianna Roberts, at Louisville, 12/4 4 by Mya Pierfax, Winthrop, 11/19
3-Point FG Attempts	7 by Ayla McDowell vs. NC Central, 12/7 7 by Tessa Johnson at Louisville, 12/4 7 by Tessa Johnson vs. Winthrop, 11/19	8, 4 times, last by Tajianna Roberts, at Louisville, 12/4
3FG Percentage (min 3 FGM)	.833 (5-6) by Ta'Niya Latson vs. NC Central, 12/7	.667 (4-6) by Tierney Coleman, NC Central, 12/7
Free Throws Made	8 by Maddy McDaniel vs. NC Central, 12/7	6 by Jordan Lee, vs. Texas, 11/27
Free Throw Attempts	10 by Joyce Edwards vs. NC Central, 12/7 10 by Maddy McDaniel vs. NC Central, 12/7	8 by Justice Carlton, vs. Texas, 11/27
FT Percentage (min 5 FTM)	1.00 (7-7) by Ta'Niya Latson vs. Bowling Green, 11/7	1.000 (6-6) by Jordan Lee, vs. Texas, 11/27
Rebounds	15 by Madina Okot vs. Southern Cal, 11/15	9 by Elif Istanbuluoglu, at Louisville, 12/4 9 by Madison Booker, vs. Texas, 11/27
Assists	11 by Raven Johnson vs. Bowling Green, 11/7	9 by Rori Harmon, vs. Texas, 11/27
Steals	6 by Raven Johnson vs. NC Central, 12/7	5 by Madison Booker, vs. Texas, 11/27 5 by Johna Donahue, Bowling Green, 11/7
Blocked Shots	4 by Madina Okot vs. Bowling Green, 11/7	3 by Kennedy Smith, vs. Southern Cal, 11/15
Turnovers	7 by Joyce Edwards vs. NC Central, 12/7	9 b Najah Lane, NC Central, 12/7

* indicates program record

^ indicates Staley-era program record

THE LAST TIME...

INDIVIDUAL

Scored 50 Points

South Carolina 51, Jocelyn Penn vs. Stetson, 1/4/03
Opponent Never

Scored 40 Points

South Carolina 51, Jocelyn Penn vs. Stetson, 1/4/03
Opponent 41, Caitlyn Clark, Iowa, 3/31/23

Scored 30 Points

South Carolina 32, Ta'Niya Latson vs. NC Central, 12/7/25
Opponent 31, DeYona Gaston, Auburn, 2/2/25

Grabbed 20 Rebounds

South Carolina 20, Ashlyn Watkins vs. NC State, 4/5/24
Opponent 24, Teaira McCowan, at Mississippi State, 1/17/19

Grabbed 15 Rebounds

South Carolina 15, Madina Okot vs. Southern Cal, 11/15/25
Opponent 15, Sarah Strong, vs. UConn, 4/6/25

Two Players with 20 or More Points

South Carolina Ta'Niya Latson 32/Joyce Edwards 25 vs. NC Central, 12/7/25
Opponent Azzi Fudd 24/Sarah Strong 24, vs. UConn, 4/6/25

Three or More Players with 20 or More Points

South Carolina T. Latson 24/M. Okot/J. Edwards 22 vs. Winthrop, 11/19/25
Opponent B McCain 29/T Stocks 23/N Mobley 20, Florida, 1/21/01

Two Players with 10 or More Rebounds

South Carolina Madina Okot 12/Adhel Tac 10 vs. Queens, 11/23/25
Opponent Angel Reese 13/Aneesah Morrow 10, vs. LSU, 3/10/24

Three or More Players with 10 or More Rebounds

South Carolina M. Okot 15/R. Johnson 11/J. Edwards 10 vs. Southern Cal, 11/15/25
Opponent W. Rolle 12/J. Breland 10/L. Broomfield 10, vs. North Carolina, 12/19/10

Had 10 Assists

South Carolina 10, Raven Johnson vs. Winthrop, 11/19/25
Opponent 10, Paige Bueckers, UConn, 2/16/25

Had Five Steals

South Carolina 6, Raven Johnson vs. NC Central, 12/7/25
Opponent 5, Madison Booker, vs. Texas, 11/27/25

Had Five Blocked Shots

South Carolina 5, Sania Feagin at Ole Miss, 2/27/25
Opponent 5, Rita Igboke, vs. Ole Miss, 3/4/23

Had 20 Points and 20 Rebounds

South Carolina Aliyah Boston (28 pts/22 rebs) vs. N. Carolina, 3/25/22
Opponent Teaira McCowan (26 pts/24 rebs) at Mississippi State, 1/17/19

Two Players had a Double-Double

South Carolina Madina Okot (14 pts/12 rebs) / Adhel Tac (11 pts/10 rebs) vs. Queens, 11/23/25
Opponent Angel Reese (15 pts/13 rebs) / Aneesah Morrow (19 pts/10 rebs) vs. LSU, 3/10/24

Three or More Players had a Double-Double

South Carolina L. Amihere (11 pts/11 rebs) / A. Boston (11 pts/12 rebs) / L. Grissett (13 pts/10 rebs) / V. Saxton (19 pts/12 rebs) vs. Charleston, 11/25/20
Opponent Shakira Austin (10 pts/16 rebs) / Kaila Charles (17 pts/10 rebs) / Channise Lewis (10 pts/12 assts), Maryland, 11/18/18

Had a Triple-Double

South Carolina Chloe Kitts (16 pts/13 rebs/10 assts) at Ole Miss, 2/27/25
Opponent Never

TEAM

Scored 100 Points

South Carolina 121 vs. Queens, 11/23/25
Opponent 103, Clemson, 11/21/03

Won by 50 or More Points

South Carolina 106-42 (64) vs. NC Central, 12/7/25
Opponent 97-39 (58) at UConn, 12/17/07

Won by 30-49 Points

South Carolina 94-54 (40) vs. Grand Canyon, 11/3/25
Opponent 66-34 (32), Georgia, 3/4/11

Overcame More Than 15-Point Deficit to Win

South Carolina 18 (16-34) 6:24 in 2nd qtr. vs. Stanford, 12/21/21*
Opponent 16 (21-37) 1:43 in 2nd qtr., at Tennessee, 2/18/21

Shot 65.0% or Better from the Field

South Carolina .662 (43-65) vs. Queens, 11/23/25
Opponent Never

Shot 60.0-64.9% from the Field

South Carolina .642 (43-67) vs. Winthrop, 11/19/25
Opponent .604 (29-48), Vanderbilt, 1/18/01

Shot 50.0-59.9% from the Field

South Carolina .507 (34-67) vs. NC Central, 12/7/25
Opponent .500 (25-50), Auburn, 2/2/25

No Players in Double-Figure Points

South Carolina at Auburn, 1/19/12
Opponent at Georgia, 2/6/25

Five Players in Double-Figure Points

South Carolina vs. Grand Canyon, 11/3/25
Opponent vs. Indiana, 3/29/24

More Than Five Players in Double-Figure Points

South Carolina 6 vs. Queens, 11/23/25
Opponent 5, at UCLA, 11/24/24

Faced AP Top-25 Opponent

Win 79-77 at No. 22 Louisville, 12/4/25
Loss 67-75 at No. 21 Tennessee, 2/18/21

Faced AP Top-10 Opponent

Win 69-52 vs. No. 8 Southern Cal, 11/15/25
Loss 58-87 vs. No. 7 UConn, 2/16/25

Faced AP Top-5 Opponent

Win 74-57 vs. No. 5 Texas, 4/4/25
Loss 66-64 vs. No. 4 Texas, 11/27/25

Faced AP No. 1 Team

Win 64-45 vs. Texas, 3/9/25 (SEC Tournament championship)
Loss 68-93 vs. Baylor, 3/30/19 (NCAA Sweet 16)

Overtime Game

Win 64-57 at Ole Miss, 2/19/23
Loss 69-70 at Missouri, 12/30/21

Double-Overtime Game

Win 82-73 at Purdue, 12/16/18
Loss 92-94 at Clemson, 11/19/09

South Carolina Was Ranked (AP Poll)

No. 1 No. 1, 11/18/24
Top 5 No. 3, 12/8/25
Top 10 No. 6, 2/24/25
Top 25 No. 15, 3/19/19

* indicates program record

SOUTH CAROLINA SINGLE-QUARTER RECORDS

TEAM			INDIVIDUAL		
Scoring			Scoring		
Most	Points		Most	Points	
1. vs. Saint Peter's, 11/22/16, 1st qtr.	37		1. Kaela Davis at Auburn, 1/5/17, 1st qtr.	19	
2. vs. Florida, 2/13/25, 1st qtr.	36		2. A'ja Wilson vs. Notre Dame, 11/26/17, 4th qtr.	18	
at Kentucky, 1/12/23, 4th qtr.	36		3. Alexis Jennings at Florida, 2/17/19, 3rd qtr.	17	
vs. Alabama, 2/3/22, 1st qtr.	36		4. Zia Cooke at Georgia, 1/2/23, 4th qtr.	15	
at Vanderbilt, 1/12/20, 3rd qtr.	36		Aliyah Boston vs. Florida, 12/31/20, 2nd qtr.	15	
vs. Alabama State, 3rd qtr.	36		M. Herbert Harrigan vs. TX A&M, 3/1/20, 1st qtr.	15	
			Kaela Davis vs. Quinnipiac, 3/25/17, 3rd qtr.	15	
			Tina Roy vs. Arkansas, 1/3/16, 3rd qtr.	15	
Fewest	Points		Rebounding		
1. vs. App State, 12/5/18, 4th qtr.	5		Most	Rebs	
2. vs. Oregon State, 3/23/21, 4th qtr.	6		1. Kamilla Cardoso vs. Ole Miss, 3/4/23, 2nd qtr.	9	
vs. Indiana, 11/28/19, 4th qtr.	6		Aliyah Boston vs. N. Carolina, 3/25/22, 4th qtr.	9	
vs. St. John's, 11/25/17, 2nd qtr.	6		LeLe Grissett at Vanderbilt, 1/14/21, 4th qtr.	9	
vs. Stanford, 3/31/17, 2nd qtr.	6		Aliyah Boston vs. UConn, 2/10/20, 1st qtr.	9	
vs. UCLA, 12/18/16, 1st qtr.	6		Aliyah Boston vs. Arkansas, 1/9/20, 1st qtr.	9	
			Alaina Coates at Arkansas, 2/5/17, 1st qtr.	9	
			Alaina Coates at Georgia, 1/26/17, 2nd qtr.	9	
Fewest Allowed	Points		Rebounding		
1. vs. Texas, 3/30/21, 4th qtr.	0		Total	Rebs	
at Vanderbilt, 1/14/21, 2nd qtr.	0		1. vs. Arkansas, 3/7/20, 4th qtr.	28	
at Ole Miss, 1/30/20, 1st qtr.	0		2. vs. Charleston, 11/25/20, 3rd qtr.	22	
4. vs. NC Central, 12/7/25 3rd qtr.	2		3. vs. Howard, 3/18/22, 1st qtr.	21	
vs. Clemson, 11/11/25, 4th qtr.	2		4. vs Coastal Carolina, 12/21/22, 1st qtr.	20	
4 other times	2		vs. Hampton, 11/27/22, 3rd qtr.	20	
			vs. Howard, 3/18/22, 3rd qtr.	20	
			vs. Howard, 3/18/22, 2nd qtr.	20	
			vs. Charleston, 11/25/20, 1st qtr.	20	
			at Ohio State, 11/14/16, 1st qtr.	20	
Most Allowed	Points		Margin	Rebs	Margin
1. vs. Baylor, 12/2/18, 1st qtr.	32		1. vs. Hampton, 11/27/22, 3rd qtr.	20-2	+18
at Maryland, 11/13/17, 4th qtr.	32		vs. Charleston, 11/25/20, 3rd qtr.	22-4	+18
vs. Kentucky, 2/26/17, 4th qtr.	32		3. vs. Arkansas, 1/22/23, 2nd qtr.	19-2	+17
4. vs. Arkansas, 3/8/19, 3rd qtr.	30		4. vs. Arkansas, 1/22/23, 3rd qtr.	18-2	+16
vs. Connecticut, 3/26/18, 1st qtr.	30		vs. Howard, 3/18/22, 2nd qtr.	20-4	+16
vs. Syracuse, 3/25/16, 4th qtr.	30		vs. Arkansas, 3/7/20, 4th qtr.	21-5	+16
Margin of Difference	Score	Margin			
Lead					
1. vs. Alabama State, 11/5/19, 3rd qtr.	36-9	+37			
2. vs. App State, 11/17/19, 1st qtr.	35-3	+32			
3. vs. NC Central, 12/7/25, 3rd qtr.	28-2	+26			
vs. Charleston, 11/25/20, 3rd qtr.	34-8	+26			
vs. USC Upstate, 11/21/19, 3rd qtr.	33-7	+26			
vs. Arkansas, 1/3/16, 2nd qtr.	35-9	+26			
Deficit	Score	Margin			
1. vs. UConn, 2/1/18, 2nd qtr.	8-29	-21			
2. at Tennessee, 2/15/18, 3rd qtr.	9-29	-20			
3. vs. Baylor, 12/2/18, 1st qtr.	13-32	-19			
at Mississippi State, 2/5/18, 4th qtr.	9-28	-19			
5. vs. Indiana, 11/28/19, 4th qtr.	6-24	-18			
vs. Connecticut, 3/26/18, 1st qtr.	12-30	-18			
Field Goals	Made	FGM			
1. at Florida, 2/27/20, 1st qtr.		15			
vs. Saint Peter's, 11/22/16, 1st qtr.		15			
3. vs. Florida, 2/13/25, 1st qtr.		14			
vs. Coastal Carolina, 12/21/22, 1st qtr.		14			
vs. Alabama, 2/3/22, 1st qtr.		14			
vs. App State, 11/17/19, 1st qtr.		14			
vs. Notre Dame, 11/26/17, 4th qtr.		14			
vs. Arkansas, 1/3/16, 2nd qtr.		14			
Attempts	FGA				
1. vs. Arkansas, 3/7/20, 4th qtr.	28				
2. vs. Duke, 11/26/25, 2nd qtr.	26				
3. vs. Arkansas, 2/20/25, 3rd qtr.	25				
vs. Oklahoma, 1/19/25, 2nd qtr.	25				
vs. Purdue, 11/30/24, 1st qtr.	25				
vs. Howard, 3/18/22, 1st qtr.	25				
vs. Arkansas, 1/9/20, 3rd qtr.	25				



ALL-TIME SELLOUTS

18,478	Georgia, 2/18/24
18,167	UConn, 2/11/24
18,000	Kentucky, 3/2/25
18,000	UConn, 2/16/25
18,000	Auburn, 2/2/25
18,000	LSU, 1/24/25
18,000	Oklahoma, 1/19/25
18,000	Texas, 1/12/25
18,000	East Carolina, 11/17/24
18,000	Tennessee, 3/3/24
18,000	Ole Miss, 2/5/24
18,000	Vanderbilt, 1/28/24
18,000	Georgia, 2/26/23
18,000	LSU, 2/12/23
18,000	Tennessee, 2/20/22
18,000	Texas A&M, 3/1/20
18,000	UConn, 2/10/20
18,000	Mississippi State, 3/3/19
18,000	UConn, 2/1/18
18,000	Kentucky, 2/26/17
18,000	UConn, 2/8/16

YEAR-BY-YEAR RECORD

Year	Record	Pct.	Att. Avg.
2002-03	14-2	.875	3,244
2003-04	5-6	.455	1,828
2004-05	8-9	.471	1,764
2005-06	12-5	.706	1,455
2006-07	15-5	.750	1,845
2007-08	12-6	.667	1,802
2008-09	6-9	.400	2,793
2009-10	7-5	.583	3,442
2010-11	14-5	.737	2,996
2011-12	12-3	.800	3,139
2012-13	12-3	.800	4,082
2013-14	16-0	1.000	6,371
2014-15	16-0	1.000	12,293
2015-16	16-1	.941	14,364
2016-17	15-1	.938	12,277
2017-18	15-2	.882	13,239
2018-19	11-4	.733	11,542
2019-20	15-0	1.000	12,185
2020-21	10-1	.909	3,500*
2021-22	16-0	1.000	12,268
2022-23	17-0	1.000	12,942
2023-24	17-0	1.000	16,067
2024-25	16-1	.941	16,437
2025-26	6-0	1.000	15,97
Total	303-68	.817	7,859*
Staley Era	237-35	.871	10,088*

* 2020-21 attendance not counted in average or streaks due to COVID-19 restrictions

In women's basketball, Colonial Life Arena has become one of the most feared places to play as enormous crowds fill the building with passion for the Gamecocks.

The state of South Carolina has rallied around head coach Dawn Staley's program in unprecedented numbers as the Gamecocks have led the nation in average attendance in each of the last 10 seasons and boast 21 sellouts (18,000) in the last 10 seasons of full capacity arenas.

Colonial Life Arena is more than just the home of South Carolina men's and women's basketball, though. It is also a thriving entertainment venue that the city of Columbia and its surrounding metropolitan area are able to enjoy throughout the year.

Colonial Life Arena is the largest arena in the state of South Carolina with 18,000 seats, and the 10th-largest on-campus basketball facility in the nation. Located on the beautiful University of South Carolina campus, this one-of-a-kind facility features 41 suites, four entertainment suites, and the Frank McGuire Club, a full-service hospitality room that has a capacity of 300. The state-of-the-art facility also features plush seating, a technologically advanced sound system and a one-of-a-kind selection of unique concession foods that will delight fans of all ages.

In Summer 2017, a 12-display center-hung video board and ribbon boards were added to the arena bowl at a cost of \$4.2 million. The center-hung board features four convex-curved main displays that measure approximately 12' x 20' and can show any combination of live video, instant replays, statistics and game information, graphics and animations, and sponsorship messages.

The Arena has hosted numerous sold out shows, including Barnum and Bailey Circus, Paul McCartney, country superstars Kenny Chesney and Taylor Swift, WWE Wrestling, Kanye West and numerous other acts.

The largest building ever constructed at the University of South Carolina at 342,000 square feet, the Arena has an intimate double-deck design that puts every seat close to the action. The cantilever of the upper deck over the lower deck extends further than any other arena of its size with great sight lines.

Two spacious locker rooms for Gamecock men's and women's basketball include team meeting rooms, recruiting rooms, coaches locker rooms and an athletic training room.

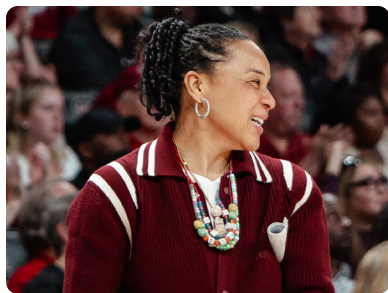
COLONIAL LIFE ARENA NOTABLES

- 10-Time National Attendance Leader (2015-present)
- NCAA Tournament Host in 2015, 2016, 2017, 2018, 2022, 2023, 2024
- 145 consecutive regular-season games with at least 10,000 fans (Jan. 2, 2015-present)*
- 21 official sellouts (18,000) since 2015-16 season
- 6 undefeated seasons
- Longest home win streak – 71 games (12/17/20-2/13/25)

* 2020-21 attendance not counted in average or streaks due to COVID-19 regulation restrictions

"It is a beautiful thing to see unfold because a lot of people really didn't think it could get done. I tip my hat to Gamecock Nation for making this a wonderful place and creating a home court advantage that allows us to win close basketball games."

– South Carolina Head Coach Dawn Staley



Head Coach DAWN STALEY

18th Season at South Carolina
26th Season in Career

Since thrusting South Carolina into the national spotlight when she was hired in May 2008, Dawn Staley has made the Gamecocks a mainstay in the battle for SEC and national championships. The Naismith Memorial Basketball Hall of Fame inductee as a player is angling for another induction as a coach with her standing as one of five head coaches with at least three women's basketball National Championships and the only Black basketball head coach with multiple national titles, one of five head coaches to lead an undefeated team to a National Championship, and the first Black head coach of the USA Basketball Senior National Team.

In Staley's 17 seasons at the helm of the Gamecocks, highlights include:

- Three National Championships (2017, 2022, 2024)
- Seven NCAA Final Fours in the last 10 tournaments (2015, 2017, 2021, 2022, 2023, 2024, 2025)
- Ranking in the AP Top 25 every week since Dec. 10, 2012, the second-longest active streak in the nation and sixth-longest all-time (254)
- 38 straight weeks at No. 1 in the AP Poll, just the third program to go wire-to-wire in back-to-back seasons
- 86 total weeks at No. 1 in the AP Poll, the third-most in the history of that poll
- Eight 30-win seasons, including a program-record 38 wins in 2023-24
- Nine SEC regular-season championships (2014, 2015, 2016, 2017, 2020, 2022, 2023, 2024, 2025)
- Nine SEC Tournament titles (2015, 2016, 2017, 2018, 2020, 2021, 2023, 2024, 2025)
- SEC-record 57 consecutive league regular-season victories, which ranks sixth in NCAA history for conference win streaks
- Four top-two recruiting classes (#2 in 2024, #1 in 2021, #1 in 2019, #2 in 2014)
- 11 NCAA Attendance titles (2015, 2016, 2017, 2018, 2019, 2020, 2021*, 2022, 2023, 2024, 2025)
- 18 WNBA Draft selections, including 11 first-round and two overall No. 1 picks

While her coaching career is in full bloom, Staley is still recognized for her body of work as a one of the most decorated participants in United States women's basketball history. The Naismith Memorial Basketball Hall of Fame solidified that legacy with her enshrinement as part of the Class of 2013. The Phoenix Club of Philadelphia established the Dawn Staley Award recognizing the nation's top guard in women's Division I basketball in 2013 as well. Staley was inducted into the Women's Basketball Hall of Fame as part of the Class of 2012, and she was part of the FIBA Hall of Fame Class of 2025.

In her 26th season as a head coach, Staley has led her college teams to 15 25-win seasons, a total of 21 postseason appearances (two WNIT) and 213 weeks in the Associated Press top 10, including 86 in the No. 1 spot – the third most times in the top spot in the history of that poll. Her .774 winning percentage (656-191) ranks ninth in the nation among active head coaches and 10th all-time.

Also a force in USA Basketball, Staley was named the U.S. Women's National Team head coach for 2017-21, leading the U.S. to 2018 FIBA World Cup gold to earn USA National Coach of the Year honors that year, adding gold medals at the 2019 and 2021 FIBA AmeriCups and stretching the U.S. Olympic gold medal streak to seven straight at the 2020 Tokyo Olympic Games, for which she again earned Coach of the Year honors. Prior to that appointment, Staley led three other U.S. teams to gold medals – 2015 FIBA U19 World Championships, 2014 FIBA U18 Americas Championship, 2007 Pan Am Games – and served as an assistant on the Senior National Team 2006-08 and again 2014-16, during which the U.S. claimed gold in the 2014 FIBA World Championship and the 2008 and 2016 Olympics.

STALEY AT SOUTH CAROLINA YEAR-BY-YEAR

Year	School	Record	Conf. Rec.	Conf. Finish	Postseason
2008-09	South Carolina	10-18	2-12	11th	
2009-10	South Carolina	14-15	7-9	T-7th	
2010-11	South Carolina	18-15	8-8	T-5th	WNIT 2nd Round
2011-12	South Carolina	25-10	10-6	T-4th	NCAA Sweet 16
2012-13	South Carolina	25-8	11-5	T-4th	NCAA 2nd Round
2013-14	South Carolina	29-5	14-2	1st	NCAA Sweet 16
2014-15	South Carolina	34-3	15-1	T-1st	SEC Tourn. Champ./NCAA Final Four
2015-16	South Carolina	33-2	16-0	1st	SEC Tourn. Champ./NCAA Sweet 16
2016-17	South Carolina	33-4	14-2	1st	SEC Tourn. Champ./NCAA Champ.
2017-18	South Carolina	29-7	12-4	T-2nd	SEC Tourn. Champ./NCAA Elite Eight
2018-19	South Carolina	23-10	13-3	2nd	NCAA Sweet 16
2019-20	South Carolina	32-1	16-0	1st	SEC Tourn. Champ./NCAA canceled)
2020-21	South Carolina	26-5	14-2	2nd	SEC Tourn. Champ./NCAA Final Four
2021-22	South Carolina	35-2	15-1	1st	NCAA Champion
2022-23	South Carolina	36-1	16-0	1st	SEC Tourn. Champ./NCAA Final Four
2023-24	South Carolina	38-0	16-0	1st	SEC Tourn., Champ./NCAA Champ
2024-25	South Carolina	35-4	15-1	T-1st	SEC Tourn. Champ./NCAA Runner-Up
2025-26	South Carolina	9-1			
At Temple	8 seasons	172-80	99-25	3 A-10 Titles	4 A-10 Tourn. Titles, 6 NCAA appearances
At SC	18th season	484-111	214-56	9 SEC Titles	9 SEC Trn. Titles, 3 NCAA Titles
Career	26th season	656-191	313-81		

STALEY HIGHLIGHTS

Coaching Highlights

College

- 18 NCAA Tournament Appearances (12 at SC)
- 3x NCAA National Champion (2017, 2022, 2024)
- 7 30-Win Seasons
- 10 Regular-Season Conference Titles (SEC 2014, 2015, 2016, 2017, 2020, 2022, 2023, 2024, 2025; A-10 2008)
- 12 Conference Tournament Titles (SEC 2015, 2016, 2017, 2018, 2020, 2021, 2023, 2024; A-10 2002, 2004, 2005, 2006)
- 5-time National Coach of the Year (2014, 2020, 2022, 2023)
- 4-time WBCA Region Coach of the Year (Region 3 2014, 2015, 2016; Region 1 2005)
- 9x Conference Coach of the Year (SEC 2014, 2015, 2016, 2020, 2022, 2023, 2024; A-10 2004, 2005)

USA Basketball

- Senior National Team Head Coach (2017-21) – Tokyo Olympics gold (2020); FIBA AmeriCup gold (2021); co-National Coach of the Year (2021); FIBA AmeriCup gold (2019), FIBA World Cup gold (2018), National Coach of the Year (2018)
- Senior National Team Asst. Coach (2006-08, 2014-16) – Rio Olympics gold medal (2016), FIBA World Championship gold medal (2014), Beijing Olympics gold medal (2008), FIBA Americas Championship gold medal (2007), FIBA World Championship bronze medal (2006)
- U19 National Team Head Coach – FIBA U19 World Championship gold medal (2015), co-National Coach of the Year (2015)
- U18 National Team Head Coach – FIBA U18 Americas Championship gold medal (2014)
- Pan Am Games Head Coach – Gold medal (2007)

Playing Highlights

U.S. Professional – 11 seasons

- Five-time WNBA All-Star (2001, 2002, 2003, 2005, 2006)
- Two-time ABL All-Star (1997, 1998)
- WNBA All-Decade Team

USA Basketball

- Olympic gold medalist (1996, 2000, 2004)
- Flag bearer for U.S. in Olympic Games Opening Ceremony (2004)
- Two-time USA Basketball Female Athlete of the Year (1994, 2004)

College – Virginia (1989-92)

- Kodak All-America (1990, 1991, 1992)
- Honda-Broderick Cup Award for Collegiate Female Athlete of the Year (1991)
- Two-time ACC Player of the Year (1991, 1992)
- NCAA Tournament MOP (1991)

Other Notables

- FIBA Hall of Fame, Class of 2025
- Naismith Mem. Basketball Hall of Fame, Class of 2013
- Order of the Palmetto Recipient (2013)
- Women's Basketball Hall of Fame, Class of 2012
- Two-time Wanamaker Award (1997, 2005)
- Henry P. Iba Citizenship Award (2007)

In her 19th season at the helm of the Gamecocks, Staley has been named National Coach of the Year five times (2014, 2020, 2022, 2023, 2024). Her 2020 unanimous selection made her the first former Naismith Player of the Year to earn the Naismith Coach of the Year award, and she became the first men's or women's coach to claim the award in three straight seasons 2022-24. She is a seven-time SEC Coach of the Year and was the 2012 BCA Female Coach of the Year. She is the only Gamecock basketball coach – men's or women's – to amass 300 victories at South Carolina and became the fastest coach to 200 wins in program history, needing just 277 games at South Carolina to reach the plateau. She is the program's all-time winningest coach with 484 wins, a .813 (484-111) winning percentage and a program-record 14 postseason appearances.

In the vaunted SEC, Staley's 214 league wins are the most among active league coaches and third all-time, trailing just Women's Basketball Hall of Fame Inductees Andy Landers (Georgia, 273) and Pat Summitt (Tennessee, 306). She was the second fastest to 200 league wins (255 games), trailing only Summitt at 229. Her .793 SEC winning percentage (214-56) is second only to Summitt (.874) in league history. Her Gamecocks are the only SEC program with multiple 16-0 seasons in league history, hitting that mark four times (2015-16, 2019-20, 2022-23, 2023-24). Staley's back-to-back SEC undefeated seasons helped the Gamecocks to an SEC-record 57-game win streak in league play, which ranks sixth in NCAA history for conference win streaks.

In addition to coaching two National Players of the Year, two National Defensive Players of the Year and a National Freshman of the Year, Staley has helped 13 Gamecocks collect 29 All-America selections, three to pick up seven SEC Player of the Year honors, four to earn SEC Defensive Player of the Year recognition a total of eight times, three to SEC 6th Player of the Year honors and six to capture SEC Freshman of the Year. She has coached 23 Gamecocks to All-SEC honors a combined 44 times, including 22 first-team selections. Since her first Gamecock was selected in the 2015 WNBA Draft, a total of 18 South Carolina have been chosen, which is the second-most of any program in that timeframe. Of those 18, 11 have been first-round picks, highlighted by two No. 1 overall picks since 2018. Three Gamecocks have been named WNBA Rookie of the Year and have amassed 13 All-Star selections. Aja Wilson went on to become a three-time WNBA MVP and two-time WNBA Defensive Player of the Year.



SOUTH CAROLINA DAWN STALEY ERA SINGLE-GAME RECORDS

Scoring

Most	Points
1. vs. Queens, 11/23/25	121
2. vs. Charleston, 11/25/20	119
3. 2x, last, vs. Bowling Green, 11/7/25	114

Fewest	Points
1. at Stanford, 11/26/10	32*
2. vs. Georgia, 3/4/11	34
3. vs. Mississippi State, 3/5/09	39

Fewest Allowed	Points
1. vs. Mississippi Valley State, 11/24/23	19*
2. vs. Howard, 3/18/22	21
vs. South Carolina State, 12/14/11	21

Most Allowed	Points
1. at Connecticut, 2/11/19	97
2. vs. Arkansas, 3/8/19	95
3. 3x, most recent, vs. Baylor, 12/2/18	94

Margin of Victory	Score	Margin
1. vs. Miss. Valley State, 11/24/23	101-19	+82
2. vs. Charleston, 11/25/20	119-38	+81
3. vs. Queens, 11/23/25	121-49	+72

Margin of Defeat	Score	Margin
1. at Stanford, 11/26/10	32-70	-38
2. vs. Georgia, 3/4/11	34-66	-32
3. vs. Stanford, 12/19/08	47-78	-31

Field Goals

Made	FGM
1. vs. Clemson, 11/16/23	44
2. 6x, most recent, vs. Queens, 11/23/25	43

Attempts	FGA
1. vs. Clemson, 11/16/23	83
vs. Maryland, 11/12/23	83
3. 2x, most recent, vs. Arkansas, 2/20/25	82

Highest Percentage (Min. 24 FGM)	FGM-A	Pct
1. vs. Morgan State, 12/6/23	41-60	.683
2. at Texas A&M, 1/21/24	39-58	.672
3. vs. Tennessee Tech, 3/21/25	43-64	.672

Lowest Percentage	FGM-A	Pct
1. at Stanford, 11/26/10	12-55	.218
2. vs. Georgia, 3/4/11	12-52	.231
3. at Florida, 1/20/13	15-64	.234

Lowest %age Allowed	FGM-A	Pct
1. vs. Miss. Valley State, 11/24/23	8-67	.119*
2. vs. South Carolina State, 12/14/11	6-48	.125
3. vs. Howard, 3/18/22	8-54	.148

Highest %age Allowed (Min. 24 FGM)	FGM-A	Pct
1. vs. UConn, 3/26/18	37-63	.587
2. vs. UConn, 2/11/19	37-65	.569
3. 2x, most recent vs. UConn, 12/28/08	35-62	.565

3-Point Field Goals

Made	3FGM
1. vs. Minnesota, 12/11/16	16
2. vs. Temple, 12/21/18	15
3. 2x, most recent, vs. App. State, 12/5/18	14

Attempts	3FGA
1. vs. Howard, 3/18/22	38
2. vs. Minnesota, 12/11/16	33
3. vs. Syracuse, 3/25/16	32

Percentage (Min. 10 3FGM)	3FGM-A	Pct
1. vs. ETSU, 11/22/18	11-16	.688
2. vs. Tennessee Tech, 3/21/24	12-19	.632
3. vs. Quinnipiac, 3/25/17	10-16	.625

Free Throws

Made	FTM
1. vs. Savannah State, 12/14/14	34
vs. Oregon State, 3/25/14	34
3. 3x, most recent, vs. Missouri, 1/10/16	32

Attempts	FTA
1. at Mississippi State, 1/6/13	50
2. vs. Savannah State, 12/28/13	48
3. 2x, most recent, vs. Charleston, 11/25/20	47

Percentage (Min. 26 FTM)	FTM-A	Pct
1. vs. Arkansas, 1/22/23	27-35	.818
2. vs. ETSU, 11/22/18	28-35	.800
vs. Hampton, 11/20/16	28-35	.800

Rebounding

Total	Rebs
1. vs. Arkansas, 1/22/23	74
2. vs. Clemson, 11/16/23	73
vs. Charleston, 11/25/20	73

Margin	Rebs	Margin
1. vs. Arkansas, 1/22/23	74-17	+57
2. vs. Hampton, 11/27/22	62-15	+47
3. vs. Clemson, 11/16/23	73-27	+46

Offensive	Off. Rebs
1. vs. Arkansas, 1/22/23	32
2. vs. Tennessee, 2/20/22	31
3. 2x, most recent, vs. Purdue, 11/30/24	30

Turnovers

Fewest	TOs
1. vs. Purdue, 11/30/24	4
at Tennessee, 2/2/12	4
2. 10x, most recent, at Ole Miss, 1/4/18	5

Most	TOs
1. at Wake Forest, 12/3/08	32
2. 3x, most recent, at Ole Miss, 2/25/16	29

Assists

1. at Kentucky, 2/25/24	30
vs. Clemson, 11/16/23	30
vs. Maryland, 11/12/23	30

Steals

1. at Alabama State, 11/11/18	22
2. 3x, most recent, vs. Alabama St., 11/10/17	21

Blocked Shots

1. vs. Presbyterian, 12/16/23	17*
vs. Appalachian State, 11/17/19	17*
3. 5x, most recent, vs. South Dak. St., 11/20/23	16

2025-26 BOX SCORES



Official Basketball Box Score - Final
Grand Canyon at South Carolina
 11/03/25 Colonial Life Arena, Columbia
 2025-26 Women's Basketball

Game Time: 7:00 PM
 Game Duration: 2:03
 Attendance: 15,801

Officials: Tommi Piria, Tiffany Bird, Gina Cantanzarri

Grand Canyon - 54

Record: 0-1

NO.	Name	Min	FG	3P	FT	Rebounds	Fouls	TP	AS	TO	ST	Blocks	BS	BA	+/		
1	Anisa Jeffries	F 29:58	5-10	0-3	1-1	2	3	5	3	11	1	1	0	0	0	-25	
11	Holly Griffiths	F 04:56	0-1	0-1	0-0	0	0	0	2	0	0	1	0	0	0	-6	
0	Chloe Mann	G 22:35	4-12	3-8	4-4	1	0	1	3	5	15	2	2	0	0	0	-24
8	Sifa Joyeuse	G 17:45	2-9	1-6	1-2	0	4	4	2	3	6	0	1	0	1	0	-16
20	Juliana LaMendola	G 18:38	1-5	0-4	0-0	1	1	2	5	2	2	2	2	0	0	0	-20
54	Faith Carson	16:48	1-3	0-2	0-0	0	4	4	3	2	2	0	1	0	1	0	-21
3	AleJah Douglas	26:19	4-10	3-6	5-6	1	2	3	2	4	16	0	2	0	0	1	-26
15	Favor Ayodele	10:04	0-1	0-0	0-0	2	1	3	3	1	0	0	0	0	1	1	-17
33	Ines Zouina	06:28	0-3	0-1	0-0	0	0	0	1	0	0	0	3	1	0	0	-13
6	Casey Valenti-Paea	10:08	0-4	0-1	0-0	0	1	1	0	0	0	0	1	1	0	2	-6
24	Norah Moo	17:17	0-1	0-0	1-2	2	0	2	0	1	1	0	0	0	0	0	-13
7	Karley Johnson	09:12	0-0	0-0	0-0	1	1	2	2	0	1	1	1	0	0	0	2
4	Diamond Wright	07:29	0-2	0-1	1-2	0	0	0	0	1	1	0	0	0	0	0	-8
22	Kaitlyn Elsholz	02:23	0-1	0-1	0-0	0	0	0	0	0	0	0	0	0	0	0	-1
Team						2	2	4	0	0	0	2					
Totals			17:62	7:34	13:17	12	19	31	26	21	54	6	17	3	3	6	-40

Major Fouls: NONE

South Carolina - 94

Record: 1-0

NO.	Name	Min	FG	3P	FT	Reb	Obt	Fouls	TP	AS	TO	ST	Blocks	BS	BA		
8	Joyce Edwards	F 27:10	5-11	0-2	3-4	2	3	5	3	2	13	1	2	0	1	30	
11	Madina Okot	C 17:26	4-5	0-0	4-6	4	4	3	7	12	0	0	0	1	0	25	
00	Ta'Niya Latson	G 28:06	7-10	1-2	5-8	0	1	1	2	6	20	4	2	1	0	1	34
5	Tessa Johnson	G 32:31	8-13	3-6	0-0	1	4	5	1	2	19	3	1	1	1	0	38
25	Raven Johnson	G 25:48	4-6	3-5	0-0	0	8	8	2	0	11	7	1	3	0	0	23
1	Maddy McDaniel	07:41	1-2	1-1	0-0	0	0	0	2	1	3	2	0	0	0	1	15
44	Agot Makeer	19:06	1-3	1-2	2-2	0	2	2	4	5	2	3	0	3	0	8	
30	Maryam Dauda	09:58	0-0	0-0	0-0	0	2	2	1	0	0	0	0	0	0	1	
24	Ayla McDowell	17:29	3-5	0-1	3-4	1	1	2	2	4	9	0	2	1	0	0	10
15	Adhel Tac	14:45	1-2	0-0	0-1	1	5	6	1	2	2	0	0	0	0	1	16
Team						0	3	3	0	0	0	0					
Totals			34:57	9:19	17:25	5	33	38	21	26	94	11	6	6	3	40	

Major Fouls: NONE

	CLM	USC
Biggest lead	0 (1 st 10:00)	41 (4 th 2:19)
Best Scoring Run	5 (2 nd 3:25)	15 (1 st 0:32)
Lead Changes	0	
Times Tied	0	
Time with Lead	00:00	39:49

Points from	CLM	USC
Turnovers	10	22
Paint	18	40
Second Chance	15	14
Fast Breaks	2	32
Bench	20	19

Period by Period Scoring	1st	2nd	3rd	4th	TOT
CLM	10	21	16	7	54
USC	29	31	19	15	94

Shooting By Period	1st	2nd	3rd	4th	GM
FG	4-13	30.8%			
3P	1-7	14.3%			
FT	1-1	100%			
2nd FG	5-17	29.4%			
3P	4-13	30.8%			
3P	2-8	25.0%			
FT	7-10	70%			
4th FG	6-17	35.3%			
3P	2-8	25.0%			
FT	2-2	100%			
4th FG	2-15	13.3%			
3P	0-6	0.0%			
FT	3-4	75%			
GM FG	17:62	27.4%			
3P	7:34	20.6%			
FT	13:17	76.0%			

Dead Ball Rebounds: 3, 2



Official Basketball Box Score - Final
Bowling Green at South Carolina
 11/07/25 Colonial Life Arena, Columbia
 2025-26 Women's Basketball

Game Time: 7:00 PM
 Game Duration: 1:46
 Attendance: 16,549

Officials: Natasha Camy, Jeffrey Smith, Chris Saucido

Bowling Green - 47

Record: 1-1

NO.	Name	Min	FG	3P	FT	Reb	TD	Fouls	TP	AS	TO	ST	Blocks	BS	BA		
11	Taya Ellis	F 17:00	0-5	0-0	0-0	2	2	4	2	0	0	1	2	2	0	1	
22	Lauren Gerken	F 15:32	1-9	1-7	0-0	1	0	1	3	0	3	0	0	1	0	-31	
3	Johnna Donahue	G 34:36	4-15	0-1	1-2	3	1	4	0	3	9	1	4	5	0	3	
10	Paige Kohler	G 35:42	3-15	1-5	0-0	0	0	0	3	2	7	5	1	0	0	1	
12	Ky Aira Miller	G 26:07	2-7	2-4	0-0	1	1	2	3	1	6	0	2	0	0	1	
8	Joniya Bland-Fitzpatrick	27:15	3-11	0-1	4-4	2	0	2	4	3	10	0	2	1	0	4	
2	Emily Sessel	16:09	1-4	1-4	0-0	1	1	2	3	0	3	2	1	2	0	1	
33	Kendal Mowley	04:12	0-0	0-0	0-0	0	0	0	0	0	0	0	0	0	1	0	
4	Jaedyn Cook	08:50	2-3	0-0	0-0	0	1	1	1	0	4	0	0	0	0	1	
20	Jasmine Fearnie	07:05	1-4	0-3	0-0	1	1	2	1	0	2	0	0	0	0	0	
0	Laila Harrison	05:10	0-0	0-0	0-0	0	0	0	0	0	0	0	0	0	0	0	
13	Sofia Moschen	02:16	1-1	1-1	0-0	0	0	0	0	0	3	0	0	0	0	0	
Team						6	1	7	0	0	0	3					
Totals			18:74	6:26	5:6	17	8	25	20	9	47	9	18	11	2	11	-67

Major Fouls: NONE

Dead Ball Rebounds: 3, 2

South Carolina - 114

Record: 2-0

NO.	Name		Min	FG	3P	FT	Reb	FOULS	TP	AS	TO	ST	Blocks	BS	BA			
				M-A	M-A	M-A	OR	DR	PF	FF								
8	Joyce Edwards	F	25:10	11-12	0-0	2-3	3	1	4	0	3	24	3	0	0	3	42	
11	Madina Okot	C	21:36	6-9	0-0	1-1	4	7	11	0	2	13	2	0	1	4	48	
00	Ta'Niya Latson	G	31:29	5-11	0-2	7-7	0	4	4	2	4	17	4	1	0	1	54	
5	Tessa Johnson	G	26:59	6-11	2-5	0-0	2	5	7	2	1	14	3	5	0	0	44	
25	Raven Johnson	G	23:00	4-7	1-2	2-2	5	5	2	1	11	11	2	3	0	0	42	
44	Agot Makeer		15:45	4-6	1-2	3-5	1	2	3	0	3	12	0	2	1	1	25	
30	Maryam Dauda		20:53	2-3	0-0	5-6	4	4	8	1	3	9	0	2	1	1	28	
24	Ayla McDowell		22:47	3-5	2-3	3-4	1	2	3	1	2	11	1	2	2	0	36	
15	Adhel Tac		12:21	1-2	0-0	1-2	1	1	2	1	3	2	0	1	1	0	16	
Team						0	6	6	0	0	0	0						
Totals				42:66	6:14	24:30	16	37	53	9	20	114	26	14	9	11	2	67

Major Fouls: NONE

Dead Ball Rebounds: 4, 0

	BGU	USC
Biggest lead	2 (1 st 9:21)	68 (4 th 3:31)
Best Scoring Run	4 (3 rd 1:37)	16 (4 th 3:31)
Lead Changes	1	
Times Tied	1	
Time with Lead	00:19	37:59

Points from	BGU	USC
Turnovers	13	21
Paint	18	66
Second Chance	4	20
Fast Breaks	2	37
Bench	22	35

Period by Period Scoring	1st	2nd	3rd	4th	TOT
BGU	7	12	16	12	47
USC	27	28	31	28	114



Official Basketball Box Score - Final
Clemson at South Carolina
 11/11/25 Colonial Life Arena, Columbia
 2025-26 Women's Basketball

Game Time: 6:00 PM
 Game Duration: 1:36
 Attendance: 16,923

Officials: Katie Lukanich, Denise Brooks, Brandon Entine

Clemson - 37

Record: 2-1

NO.	Name	Min	FG	3P	FT	Rebounds	Fouls	TP	AS	TO	ST	Blocks	BS	BA	+/		
25	Demeara Hinds	F 17:54	3-6	0-0	2-2	4	4	8	4	2	8	1	2	0	0	-10	
32	Raven Thompson	F 20:15	0-1	0-0	0-0	0	3	3	2	1	0	2	1	0	0	-17	
10	Taylor Johnson-Matthews	G 25:58	3-12	1-6	2-2	1	3	4	0	1	9	0	2	1	0	-22	
12	Mia Moore	G 25:48	2-10	1-3	0-0	0	4	4	1	1	5	0	1	0	0	-29	
14	Rachael Rose	G 29:15	3-7	0-4	0-0	1	1	2	2	6	1	0	0	0	0	-17	
21	Hadley Periman	35:07	1-5	1-5	0-0	1	1	2	2	3	3	1	4	1	0	-20	
11	Rusne Augustinaitis	24:31	1-12	1-8	0-0	0	4	4	0	3	2	0	0	0	2	-3	
5	Hannah Kohn	14:57	1-7	1-7	0-0	0	0	0	1	0	3	0	1	0	0	-11	
31	Morgan Lee	02:27	0-0	0-0	0-0	0	0	0	2	0	0	0	0	0	0	-5	
0	Holland Harris	03:50	0-1	0-0	0-0	0	0	0	0	0	0	0	0	0	0	-6	
Total			4 1 5 0 0 2														
Totals			14:61	5-33	4-4	10	21	31	14	10	37	9	10	5	1	10	-28

2025-26 BOX SCORES



Official Basketball Box Score - Final
Winthrop at South Carolina
11/19/25 Colonial Life Arena, Columbia
2025-26 Women's Basketball

Game Time: 7:00 PM
Game Duration: 1:47
Attendance: 15,787

Officials: Gina Cross, Charles Watson, Deanna Jackson

Winthrop - 56

Record: 2-2

NO.	Name		Min	FG		3P		FT		Rebounds		Fouls		TP	AS	TO	ST	Blocks		B/A
				M	A	M	A	M	A	OR	DR	TOT	PF					FD	BS	
11	Naomi Wilson	F	17:55	3-4	0-0	0-0	1-2	2	2	4	4	3	7	0	2	0	0	0	0	-20
3	Madison Ruff	G	13:43	4-10	0-0	0-0	2-3	1	2	3	2	6	10	0	0	1	0	2	-3	
13	Mya Pierfax	G	33:09	6-12	4-8	0-0	1	0	1	0	0	0	16	2	4	1	0	1	-46	
15	Amourie Porter	G	28:39	3-14	0-2	4-4	3	1	4	3	2	10	2	1	0	0	0	1	-45	
22	Cori Lard	G	25:29	2-8	1-4	0-0	0	0	1	2	3	5	0	5	1	2	0	0	0	-29
7	Riyah Wilson		30:22	2-7	2-5	0-0	2	1	3	1	1	6	1	6	1	3	0	0	1	-47
20	Tocarra Johnson		15:07	0-4	0-0	0-0	0	0	0	0	0	4	0	0	0	1	0	0	1	-19
21	Persais Williams		21:25	1-5	0-0	0-0	0	2	0	2	1	1	2	2	0	0	0	0	1	-28
5	Mya Hamilton		14:11	0-2	0-2	0-0	0	0	0	0	0	0	0	0	0	0	0	0	0	-13
Team				3		1		4		0		0		1		2				
Totals				21-66	7-21	7-9	15	9	24	20	13	56	8	15	2	0	7	-50		

Major Fouls: NONE

Shooting By Period	1st	2nd	3rd	4th	OT
FG%	51.6	31.3	26.3	44.4	
3PT%	2.6	33.3	0.0	50.0	
FT%	3.3	100%	2.2	100%	
2nd FG%	4.2	20.0			
3PT%	2.5	40.0%			
FT%	2.2	100%			
3rd FG%	8.18	44.4%			
3PT%	1.4	25.0%			
FT%	1.2	50%			
4th FG%	4.12	33.3%			
3PT%	2.6	33.3%			
FT%	1.2	50%			
GM FG%	21.66	31.8%			
3PT%	7.21	33.3%			
FT%	7.9	77.8%			

Dead Ball Rebounds: 4.0

South Carolina - 106

Record: 5-0

NO.	Name	Min	FG	3P	FT	Rebounds	Fouls	TP	AS	TO	ST	Blocks	BS	+/			
			M-A	M-A	M-A	OR DR TOT	PF FD					BS	BA				
8	Joyce Edwards	F 27:33	9-13	0-0	4-6	3 2 5	1 5 22	1	2	1	0	0	40				
11	Madina Okot	C 25:16	10-12	0-0	3-4	6 5 11	2 2 23	3	2	1	3	0	36				
00	Ta'Niya Latson	G 25:03	8-11	2-4	6-8	1 4 5	1 5 24	4	2	1	0	0	31				
5	Tessa Johnson	G 29:21	3-8	3-7	0-0	1 1 2	1 9 11	0	0	1	0	1	28				
25	Raven Johnson	G 21:20	1-4	0-3	1-2	0 4 4	2 2 3	10	1	0	1	0	33				
30	Maryam Dauda	11:43	0-2	0-1	0-2	0 1 1	2 2 0	1	1	0	1	0	-7				
44	Agot Makeer	21:17	6-10	0-1	0-0	3 4 7	2 1 12	4	0	2	0	0	23				
24	Ayla McDowell	25:43	3-4	0-1	1-1	2 2 4	0 0 1	7	1	0	1	0	38				
15	Adhel Tac	12:44	3-3	0-0	0-0	1 4 5	2 0 6	0	0	0	0	1	14				
Team						2 1 3		0		0		1					
Totals			43-67	5-17	15-24	18	28	46	13	20	106	25	9	6	7	0	50

Major Fouls: NONE

Shooting By Period	1st	2nd	3rd	4th	OT
FG%	10.13	76.9%			
3PT%	0-1	0.0%			
FT%	8-8	100%			
2nd FG%	13.17	76.5%			
3PT%	3.5	60.0%			
FT%	4.8	50%			
3rd FG%	10.18	55.6%			
3PT%	2.7	28.6%			
FT%	2.4	50%			
4th FG%	10.19	52.6%			
3PT%	0-4	0.0%			
FT%	1-4	25%			
GM FG%	43.67	64.2%			
3PT%	5.17	29.4%			
FT%	15.24	62.5%			

Dead Ball Rebounds: 6.0

	WIN	USC
Biggest lead	2 (1 st 9:33)	52 (4 th 1:09)
Best Scoring Run	3 (1 st 3:40)	12 (2 nd 5:24)
Lead Changes	1	
Times Tied	1	
Time with Lead	00:08	38:56

Points from	WIN	USC
Turnovers	8	26
Paint	20	70
Second Chance	17	27
Fast Breaks	7	33
Bench	8	25

Period by Period Scoring	1st	2nd	3rd	4th	TOT
WIN	15	12	18	11	56
USC	28	33	24	21	106



Official Basketball Box Score - Final
Queens (NC) at South Carolina
11/23/25 Colonial Life Arena, Columbia
2025-26 Women's Basketball

Game Time: 2:00 PM
Game Duration: 1:51
Attendance: 15,222

Officials: Maggie Terman, Adrienne Gilmore, Kevin Fahy

Queens (NC) - 49

Record: 3-3

NO.	Name	Min	FG	3P	FT	Rebounds	Fouls	TP	AS	TO	ST	Blocks	+/-				
			M-A	M-A	M-A	OR DR TOT	PF FD					BS BA					
5	Brenae Jones-Grant	F 25:05	3-11	1-4	3-4	4 3 7	3 2 10	1	2	0	0	4	-34				
21	Hannah Hicks	F 21:08	0-4	0-0	1-2	1 0 1	1 4 1	1	0	0	0	2	-46				
3	Jermamy Mapp	G 25:41	3-13	1-2	2-2	0 2 2	1 1 1	9	2	4	1	0	-60				
10	Ana Barreto	G 22:49	2-12	2-6	0-0	0 1 1	2 0 6	2	2	2	0	1	-44				
22	Dayana Colvin	G 20:56	1-6	1-2	2-2	0 2 2	2 1 5	3	5	0	0	1	-38				
8	Tamar Kogelovich	10:58	2-3	1-2	0-0	1 0 1	5 0 5	1	1	0	0	0	-21				
31	Bresh Franks	18:38	1-2	0-0	0-0	2 1 3	4 1 2	1	1	0	1	0	-26				
6	Magda Freire	09:54	1-3	0-2	0-0	0 0 0	2 0 2	0	3	1	0	2	-25				
11	Imani Morris	06:53	0-2	0-0	0-0	0 0 0	5 2 0	0	1	0	0	0	-18				
9	Kelley Hutcherson	23:05	1-6	1-3	0-0	0 0 0	0 1 3	1	0	1	0	1	-32				
1	Alyssa Lewis	14:52	2-8	2-7	0-0	0 2 2	0 0 6	0	1	0	0	0	-16				
Team			4		2	6	0	0	1								
Totals			16-70	9-28	8-10	12	13	25	25	12	49	11	21	5	1	12	-72

Major Fouls: NONE

Shooting By Period	1st	2nd	3rd	4th	OT
FG%	1.15	6.7%			
3PT%	1-5	33.3%			
FT%	2-2	100%			
2nd FG%	5-17	29.4%			
3PT%	3-9	33.3%			
FT%	1-2	50%			
3rd FG%	5-18	27.8%			
3PT%	4-5	80.0%			
FT%	2-2	100%			
4th FG%	5-20	25.0%			
3PT%	1-11	9.1%			
FT%	3-4	75%			
GM FG%	16.70	22.9%			
3PT%	9.28	32.1%			
FT%	8-10	80.0%			

Dead Ball Rebounds: 3.2

South Carolina - 121

Record: 6-0

NO.	Name	Min	FG	3P	FT	Rebounds	Fouls	TP	AS	TO	ST	Blocks	BS	BA
			M-A	M-A	M-A	OR DR TOT	PF FD					BS	BA	
8	Joyce Edwards	F 25:10	9-11	0-0	7-9	2 2 4	3 8	25	3	1	2	2	0	46
11	Madina Okot	C 19:16	5-8	0-1	4-4	2 10 12	1 2	14	0	0	2	3	0	41
00	Ta'Niya Latson	G 27:40	9-11	2-2	4-5	0 2 2	1 3	24	5	2	3	1	0	50
5	Tessa Johnson	G 21:21	5-8	3-5	0-0	0 1 1	0 0	13	5	1	0	0	0	36
25	Raven Johnson	G 22:09	5-6	2-2	0-0	0 2 2	2 0	10	12	7	2	3	2	0 39
44	Agot Makeer	19:49	1-5	0-4	2-2	0 3 3	1 1	4	1	1	1	1	0	39
1	Maddy McDaniel	12:16	1-2	0-0	0-0	0 1 1	1 2	2	3	0	1	0	1	18
24	Ayla McDowell	16:45	1-4	1-4	4-4	2 3 5	1 4	7	1	0	1	1	0	34
30	Maryam Dauda	16:45	4-7	0-2	1-2	0 5 5	2 1	9	0	2	0	1	0	34
15	Adhel Tac	18:49	3-3	0-0	5-8	1 9 10	0 4	11	1	2	1	1	0	23
Team						3 3 6	0	0	0	0				

Major Fouls: NONE

Shooting By Period	1st	2nd	3rd	4th	OT
FG%	10.16	62.5%			
3PT%	0-2	0.0%			
FT%	9-10	90%			
2nd FG%	10-13	76.9%			
3PT%	3-5	60.0%			
FT%	6-8	75%			
3rd FG%	13-22	59.1%			
3PT%	3-9	33.3%			
FT%	1-2	50%			
4th FG%	10-14	71.4%			
3PT%	2-4	50.0%			
FT%	11-14	78.6%			
GM FG%	43.65	66.2%			
3PT%	8-20	40.0%			
FT%	27-34	79.4%			

Dead Ball Rebounds: 4.0

	QUE	USC
Biggest lead	0 (1 st 10:00)	74 (4 th 1:12)
Best Scoring Run	6 (4 th 9:27)	28 (2 nd 8:50)
Lead Changes	0	
Times Tied	2	
Time with Lead	00:00	38:55

Points from	QUE	USC
Turnovers	12	22
Paint	12	66
Second Chance	13	11
Fast Breaks	13	56
Bench	18	33

Period by Period Scoring	1st	2nd	3rd	4th	TOT
QUE	5	14	16	14	49
USC	29	29	30	33	121



Official Basketball Box Score - Final
South Carolina at Duke
11/20/25 Michelé ULTRA Arena, Las Vegas
2025-26 Women's Basketball

Game Time: 4:30 PM
Game Duration: 1:56
Attendance: 2,380

Officials: Tiffany Bird, Fatou Cissoko-Stephens, Ray Gubeyan

South Carolina - 83

Record: 7-0

NO.	Name	Min	FG	3P	FT	Rebounds	Fouls	TP	AS	TO	ST	Blocks	BS	+/			
			M-A	M-A	M-A	OR	DR	TOT	PF	FD		BS	BA				
8	Joyce Edwards	F 31:51	9-18	0-1	4-5	1	5	6	1	3	22	6	1	3	0	1	10
11	Madina Okot	C 30:32	11-18	0-1	1-2	5	8	13	1	23	6	1	3	4	2	2	14
40	Ta'Niya Latson	G 25:57	6-13	0-2	0-0	0	1	1	2	12	2	1	0	1	0	1	5
5	Tessa Johnson	G 31:02	2-6	1-2	0-0	1	1	2	1	0	0	1	1	1	0	1	5
25	Raven Johnson	G 31:31	0-2	0-5	4-5	3	2	5	3	3	10	6	1	0	1	15	10
15	Adriel Tac	07:02	0-0	0-0	2-2	1	0	1	1	2	0	1	0	0	0	0	-3
1	Maddy McDaniel	19:21	2-3	0-1	1-2	0	1	1	0	2	5	1	0	1	0	2	2
30	Maryam Dauda	10:35	0-1	0-0	0-0	2	4	6	3	0	0	0	0	0	0	0	13
44	Agot Makeke	16:24	2-6	0-1	0-0	1	3	4	1	0	4	1	0	0	0	0	9
24	Ayla McDowell	01:31	0-1	0-0	0-0	0	0	0	0	0	0	0	0	0	0	0	-1
Team						2	3	5	0	0	0	0	0	0	0	0	0

2025-26 BOX SCORES

NCAA

Official Basketball Box Score - Final

South Carolina at Louisville

12/04/25 KFC Yum! Center, Louisville, KY

2025-26 Women's Basketball

Game Time: 7:02 PM

Game Duration: 1:56

Attendance: 10,012

Officials: Maj Forsberg, Pualani Spurlock, Bily Smith

South Carolina - 79

Record: 8-1

NO.	Name	Min	FG	3P	FT	Rebounds	Fouls	TP	AS	TO	ST	Blocks	+/-
			M-A	M-A	M-A	OR DR TOT	PF FD					BS BA	
8	Joyce Edwards	F 35:17	5-12	1-1	1-2	1 4 5	1 3	12	0	3	3	0 0 0	-1
11	Madina Okot	C 32:38	10-16	0-0	3-7	3 10 13	2 4	23	2	4	0	0 0 0	1
00	Ta'Niya Latson	G 38:19	3-9	1-4	2-2	0 1 1	2 1	9	5	1	0	0 0 1	1
5	Tessa Johnson	G 38:10	7-13	4-7	2-2	2 5 7	1 4	20	3	1	0	0 0 4	4
25	Raven Johnson	G 38:18	4-7	1-2	2-2	1 3 4	2 2	11	8	1	0	1 0 1	1
1	Maddy McDaniel	05:13	0-1	0-1	0-0	0 1 1	0 1	0	0	0	1	0 0 0	0
15	Adhel Tac	03:23	0-1	0-0	1-2	1 0 1	1 1	1	0	0	0	0 0 2	2
24	Ayla McDowell	08:42	1-2	1-1	0-0	2 0 2	1 0	3	1	1	0	0 0 2	2
Team						0 0 0	0	0	1				
Totals			30-61	8-16	11-17	10 24 34	10 16	79	19	12	4	1 1 2	

Major Fouls: NONE

Shooting By Period

1 st FG%	12-19	63.2%
3PT%	2-4	50.0%
FT%	1-1	100%
2 nd FG%	6-11	54.5%
3PT%	2-3	66.7%
FT%	4-6	66.7%
3 rd FG%	6-14	42.9%
3PT%	3-6	50.0%
FT%	3-4	75%
4 th FG%	6-17	35.3%
3PT%	1-3	33.3%
FT%	3-6	50%
GM FG%	30-61	49.2%
3PT%	8-16	50.0%
FT%	11-17	64.7%

Dead Ball Rebounds: 4 0

Louisville - 77

Record: 7-3

NO.	Name	Min	FG	3P	FT	Rebounds	Fouls	TP	AS	TO	ST	Blocks	+/-
			M-A	M-A	M-A	OR DR TOT	PF FD					BS BA	
0	Laura Ziegler	F 25:35	0-2	0-2	0-0	1 3 4	2 0	0	1	4	0	0 0 0	-3
4	Mackeny Randolph	F 12:05	1-2	0-0	0-0	2 0 2	1 0	2	0	0	0	0 0 0	-11
9	Anaya Hardy	F 22:49	3-4	0-0	0-0	2 3 5	4 1	6	0	0	1	0 0	-1
11	Elif Istanbuliuglu	F 34:06	6-10	2-6	1-2	7 9	2 4	15	1	1	0	0 0 1	1
22	Tajanna Roberts	G 31:45	8-18	4-8	0-0	1 3 4	2 0	20	3	2	0	0 0 1	-3
1	Reyna Scott	37:14	6-13	1-2	2-2	1 2 3	2 2	15	4	3	1	0 0 0	-3
2	Imari Berry	17:04	2-7	1-3	2-2	0 4 4	0 1	7	2	1	1	0 0 2	2
23	Skylar Jones	19:22	5-9	1-2	1-4	1 1 2	3 2	12	0	0	1	0 0 0	8
Team						1 0 1	0	0	1				
Totals			31-65	9-23	6-10	11 23 34	16 10	77	11	12	3	1 1 2	

Major Fouls: NONE

Shooting By Period

1 st FG%	12-19	63.2%
3PT%	1-5	20.0%
FT%	0-0	0%
2 nd FG%	5-12	41.7%
3PT%	3-6	50.0%
FT%	1-2	50%
3 rd FG%	9-16	56.3%
3PT%	2-4	50.0%
FT%	3-6	50%
4 th FG%	5-18	27.8%
3PT%	3-8	37.5%
FT%	2-2	100%
GM FG%	31-65	47.7%
3PT%	9-23	39.1%
FT%	6-10	60.0%

Dead Ball Rebounds: 3 0

N.C. Central at South Carolina

Record: 1-8

NO.	Name	Min	FG	3P	FT	Rebounds	Fouls	TP	AS	TO	ST	Blocks	+/-
			M-A	M-A	M-A	OR DR TOT	PF FD					BS BA	
15	Dianna Blake	F 28:14	1-2	0-0	0-0	1 4 5	4 1	2	0	3	1	0 0 0	-37
24	Aniya Finger	F 20:30	4-13	1-3	0-0	0 1 1	5 0	9	0	0	0	0 0 0	-32
2	Victoria Morris	G 21:36	3-8	0-0	0-0	2 2 4	1 2	6	1	4	0	1 2	-26
4	Tierney Coleman	G 20:13	5-8	4-6	0-1	3 1 4	2 2	14	1	3	2	0 1	-33
23	Najah Lane	G 35:12	1-6	0-1	1-2	0 2 2	0 2	3	6	9	0	0 1	-58
5	Nia Young	12:50	0-3	0-2	1-2	0 0 0	4 1	1	1	4	0	0 1	-21
22	Madiguene Pene	16:00	0-3	0-0	0-0	2 0 2	0 0	0	0	1	1	0 1	-19
10	Shakiria Foster	18:07	0-2	0-2	0-0	1 2 3	2 0	0	0	6	0	0 0	-31
0	Aysia Hinton	06:22	1-2	1-2	0-0	0 0 0	0 1	3	0	0	0	0 1	-9
11	Amaya Harris	09:13	0-1	0-1	2-2	0 0 0	2 1	2	0	3	0	0 0	-28
12	Aaliyah Grant	01:12	0-0	0-0	0-0	0 0 0	0 0	0	0	0	0	0 0	-4
20	Natalie Jasper	08:22	1-5	0-2	0-0	0 0 0	4 0	2	0	0	0	1 2	-16
13	Kendall Alexander	02:09	0-1	0-0	0-0	0 0 0	0 0	0	0	0	0	0 1	-6
Team						6 1 7	0	0	3				
Totals			16-54	6-19	4-7	15 13 28	24 10	42	9	36	4	2 10	-64

Major Fouls: NONE

Shooting By Period

1 st FG%	5-15	33.3%
3PT%	3-7	42.9%
FT%	1-2	50%
2 nd FG%	5-8	62.5%
3PT%	1-3	33.3%
FT%	0-1	0%
3 rd FG%	1-16	6.3%
3PT%	0-4	0.0%
FT%	3-4	75%
GM FG%	16-54	29.6%
3PT%	6-19	31.6%
FT%	4-7	57.1%

Dead Ball Rebounds: 2 0

SC

LOU

Biggest lead	11 (3 rd 8:59)	5 (4 th 4:23)
Best Scoring Run	8 (2 nd 9:19)	9 (4 th 8:55)
Lead Changes	13	
Times Tied	6	
Time with Lead	25:45	11:03

Points from

Turnovers	SC	LOU
Paint	36	30
Second Chance	6	10
Fast Breaks	0	6
Bench	4	34

Period by Period Scoring

	1st	2nd	3rd	4th	TOT
SC	27	18	18	16	79
LOU	25	14	23	15	77

NCC

USC

Biggest lead	3 (1 st 6:57)	64 (4 th 0:37)
Best Scoring Run	7 (4 th 4:32)	30 (3 rd 2:13)
Lead Changes	4	
Times Tied	1	
Time with Lead	01:56	37:17

Points from

Turnovers	NCC	USC
Paint	18	42
Second Chance	2	20
Fast Breaks	12	38
Bench	8	30

Period by Period Scoring

	1st	2nd	3rd	4th	TOT
NCC	14	11	2	15	42
USC	26	20	28	32	106

PLAYER GAME-BY-GAME AND CAREER STATS

#00 LATSON, Ta'Niya

Opponent	Date	GS	MIN	Total		3-Pointers		Free throws		Rebounds				PF	A	TO	BLK	STL	PTS	AVG
				FG-FGA	PCT	3FG-3FGA	PCT	FT-FTA	PCT	OFF	DEF	TOT	AVG							
Grand Canyon	11/03/2025	*	28:06	7-10	.700	1-2	.500	5-8	.625	0	1	1	1.0	2	4	2	0	1	20	20.0
Bowling Green	11/07/2025	*	31:29	5-11	.455	0-2	.000	7-7	1.000	0	4	4	2.5	2	4	1	1	0	17	18.5
Clemson	11/11/2025	*	34:23	4-8	.500	1-1	1.000	3-4	.750	0	8	8	4.3	0	3	4	2	0	12	16.3
vs Southern California	11/15/2025	*	28:22	6-14	.429	0-0	.000	0-0	.000	2	2	4	4.3	3	2	1	0	1	12	15.3
Winthrop	11/19/2025	*	25:03	8-11	.727	2-4	.500	6-9	.667	1	4	5	4.4	1	4	2	0	1	24	17.0
Queens (NC)	11/23/2025	*	27:40	9-11	.818	2-2	1.000	4-5	.800	0	2	2	4.0	1	5	2	1	3	24	18.2
vs Duke	11/26/2025	*	25:57	6-13	.462	0-2	.000	0-0	.000	0	1	1	3.6	2	2	1	0	0	12	17.3
vs Texas	11/27/2025	*	31:47	4-12	.333	1-1	1.000	7-8	.875	4	0	4	3.6	1	2	3	0	2	16	17.1
at Louisville	12/04/2025	*	38:19	3-9	.333	1-4	.250	2-2	1.000	0	1	1	3.3	2	5	1	0	0	9	16.2
N.C. Central	12/07/2025	*	34:39	11-18	.611	5-6	.833	5-5	1.000	1	3	4	3.4	2	2	0	1	3	32	17.8
Totals		10	305:45	63-117	.538	13-24	.542	39-48	.813	8	26	34	3.4	16	33	17	5	11	178	17.8

Player Averages

Games Played	Minutes/ game	Points/ game	FG Pct	3FG Pct	FT Pct	Rebounds/ game	Assists/ game	Turnovers/ game	Assist/Turnover ratio	Steals/ game	Blocks/ game
10	30.6	17.8	53.8	54.2	81.3	3.4	3.3	1.7	1.9	1.1	0.5

LATSON, Ta'niya

				Field Goals		3-Point		F-Throws		Rebounds										Scoring	
SEASON	TEAM	GP-GS	MIN/AVG	FG-FGA	FG%	3FG-3FGA	3FG%	FT-FTA	FT%	OFF	DEF	TOT	AVG	PF-FO	A	TO	BLK	STL	PTS	AVG	
2022-23	FSU	31-31	913/29.5	225-494	.455	38-105	.362	171-199	.859	40	99	139	4.5	61-2	90	82	21	51	659	21.3	
2023-24	FSU	33-33	1023/31.0	258-589	.438	27-100	.270	162-190	.853	18	119	137	4.2	53-3	137	100	15	50	705	21.4	
2024-25	FSU	29-29	874/30.2	255-565	.451	37-108	.343	184-225	.818	33	100	133	4.6	52-2	134	89	14	63	731	25.2	
2025-26	SC	10-10	306/30.6	63-117	.538	13-24	.542	39-48	.813	8	26	34	3.4	16-0	33	17	5	11	178	17.8	
TOTAL FOR SC		10-10	306/30.6	63-117	.538	13-24	.542	39-48	.813	8	26	34	3.4	16-0	33	17	5	11	178	17.8	
TOTAL		103-103	3116/30.3	801-1765	.454	115-337	.341	556-662	.840	99	344	443	4.3	182-7	394	288	55	175	2273	22.1	

#1 MCDANIEL, Maddy

Opponent	Date	GS	MIN	Total		3-Pointers		Free throws		Rebounds											
				FG-FGA	PCT	3FG-3FGA	PCT	FT-FTA	PCT	OFF	DEF	TOT	AVG	PF	A	TO	BLK	STL	PTS	AVG	
Grand Canyon	11/03/2025		07:41	1-2	.500	1-1	1.000	0-0	.000	0	0	0	0.0	2	2	0	0	0	3	3.0	
Queens (NC)	11/23/2025		12:16	1-2	.500	0-0	.000	0-0	.000	0	1	1	0.5	1	3	0	0	1	2	2.5	
vs Duke	11/26/2025		19:21	2-3	.667	0-1	.000	1-2	.500	0	1	1	0.7	0	1	0	0	1	5	3.3	
vs Texas	11/27/2025		13:00	0-2	.000	0-1	.000	0-0	.000	0	0	0	0.5	0	2	0	0	0	0	2.5	
at Louisville	12/04/2025		05:13	0-1	.000	0-1	.000	0-0	.000	0	1	1	0.6	0	0	0	0	1	0	2.0	
N.C. Central	12/07/2025		24:16	0-2	.000	0-1	.000	8-10	.800	1	2	3	1.0	2	3	0	0	2	8	3.0	
Totals		0	81:47	4-12	.333	1-5	.200	9-12	.750	1	5	6	1.0	5	11	0	0	5	18	3.0	

Player Averages

Games Played	Minutes/ game	Points/ game	FG Pct	3FG Pct	FT Pct	Rebounds/ game	Assists/ game	Turnovers/ game	Assist/Turnover ratio	Steals/ game	Blocks/ game
6	13.6	3.0	33.3	20.0	75.0	1.0	1.8	0.0	11.0	0.8	0.0

MCDANIEL, Maddy

				Field Goals		3-Point		F-Throws		Rebounds										Scoring	
SEASON	TEAM	GP-GS	MIN/AVG	FG-FGA	FG%	3FG-3FGA	3FG%	FT-FTA	FT%	OFF	DEF	TOT	AVG	PF-FO	A	TO	BLK	STL	PTS	AVG	
2024-25	SC	30-0	329/11.0	34-68	.500	3-13	.231	22-32	.688	2	23	25	0.8	18-0	51	17	1	21	93	3.1	
2025-26	SC	6-0	82/13.6	4-12	.333	1-5	.200	9-12	.750	1	5	6	1.0	5-0	11	0	0	5	18	3.0	
TOTAL		36-0	410/11.4	38-80	.475	4-18	.222	31-44	.705	3	28	31	0.9	23-0	62	17	1	26	111	3.1	

PLAYER GAME-BY-GAME AND CAREER STATS

#5 JOHNSON, Tessa

Opponent	Date	GS	MIN	Total		3-Pointers		Free throws		Rebounds				PF	A	TO	BLK	STL	PTS	AVG	
				FG-FGA	PCT	3FG-3FGA	PCT	FT-FTA	PCT	OFF	DEF	TOT	AVG								
Grand Canyon	11/03/2025	*	32:31	8-13	.615	3-6	.500	0-0	.000	1	4	5	5.0	1	3	1	1	1	19	19.0	
Bowling Green	11/07/2025	*	26:59	6-11	.545	2-5	.400	0-0	.000	2	5	7	6.0	2	3	5	0	0	14	16.5	
Clemson	11/11/2025	*	35:15	5-8	.625	2-4	.500	1-1	1.000	0	2	2	4.7	0	3	1	1	0	13	15.3	
vs Southern California	11/15/2025	*	36:34	4-11	.364	2-4	.500	4-4	1.000	1	3	4	4.5	2	5	3	0	1	14	15.0	
Winthrop	11/19/2025	*	29:21	3-8	.375	3-7	.429	0-0	.000	0	1	1	3.8	1	1	0	1	0	9	13.8	
Queens (NC)	11/23/2025	*	21:21	5-8	.625	3-5	.600	0-0	.000	0	1	1	3.3	0	5	1	0	0	13	13.7	
vs Duke	11/26/2025	*	31:02	2-6	.333	1-2	.500	0-0	.000	0	1	1	3.0	1	0	0	1	1	5	12.4	
vs Texas	11/27/2025	*	36:43	5-10	.500	1-3	.333	0-0	.000	0	0	0	2.6	3	3	2	0	0	11	12.3	
at Louisville	12/04/2025	*	38:10	7-13	.538	4-7	.571	2-2	1.000	2	5	7	3.1	1	3	1	0	0	20	13.1	
Totals			9	287:56	45-88	.511	21-43	.488	7-7	1.000	6	22	28	3.1	11	26	14	4	3	118	13.1

Player Averages

Games Played	Minutes/ game	Points/ game	FG Pct	3FG Pct	FT Pct	Rebounds/ game	Assists/ game	Turnovers/ game	Assist/Turnover ratio	Steals/ game	Blocks/ game
9	32.0	13.1	51.1	48.8	100.0	3.1	2.9	1.6	1.9	0.3	0.4

JOHNSON, Tessa

				Field Goals		3-Point		F-Throws		Rebounds												Scoring	
SEASON	TEAM	GP-GS	MIN/AVG	FG-FGA	FG%	3FG-3FGA	3FG%	FT-FTA	FT%	OFF	DEF	TOT	AVG	PF-FO	A	TO	BLK	STL	PTS	AVG			
2023-24	SC	35-2	625/17.9	76-170	.447	35-81	.432	44-51	.863	11	50	61	1.7	24-0	40	32	3	24	231	6.6			
2024-25	SC	37-0	783/21.2	108-228	.474	46-107	.430	47-57	.825	16	64	80	2.2	45-0	54	46	13	25	309	8.4			
2025-26	SC	9-9	288/32.0	45-88	.511	21-43	.488	7-7	1.000	6	22	28	3.1	11-0	26	14	4	3	118	13.1			
TOTAL		81-11	1696/20.9	229-486	.471	102-231	.442	98-115	.852	33	136	169	2.1	80-0	120	92	20	52	658	8.1			

#8 EDWARDS, Joyce

Opponent	Date	GS	MIN	Total		3-Pointers		Free throws		Rebounds				PF	A	TO	BLK	STL	PTS	AVG
				FG-FGA	PCT	3FG-3FGA	PCT	FT-FTA	PCT	OFF	DEF	TOT	AVG							
Grand Canyon	11/03/2025	*	27:10	5-11	.455	0-2	.000	3-4	.750	2	3	5	5.0	3	1	2	1	0	13	13.0
Bowling Green	11/07/2025	*	25:10	11-12	.917	0-0	.000	2-3	.667	3	1	4	4.5	0	3	0	3	0	24	18.5
Clemson	11/11/2025	*	30:16	8-17	.471	0-0	.000	2-3	.667	3	5	8	5.7	1	2	1	3	1	18	18.3
vs Southern California	11/15/2025	*	35:09	7-16	.438	0-0	.000	3-8	.375	4	6	10	6.8	3	4	6	2	2	17	18.0
Winthrop	11/19/2025	*	27:33	9-13	.692	0-0	.000	4-6	.667	3	2	5	6.4	1	1	2	0	1	22	18.8
Queens (NC)	11/23/2025	*	25:10	9-11	.818	0-0	.000	7-9	.778	2	2	4	6.0	3	3	1	2	2	25	19.8
vs Duke	11/26/2025	*	31:51	9-18	.500	0-1	.000	4-5	.800	1	5	6	6.0	1	6	1	0	3	22	20.1
vs Texas	11/27/2025	*	30:36	7-16	.438	0-0	.000	2-4	.500	1	3	4	5.8	3	3	0	1	2	16	19.6
at Louisville	12/04/2025	*	35:17	5-12	.417	1-1	1.000	1-2	.500	1	4	5	5.7	1	0	3	0	3	12	18.8
N.C. Central	12/07/2025	*	33:38	9-11	.818	0-0	.000	7-10	.700	4	6	10	6.1	3	6	7	3	4	25	19.4
Totals		10	301:50	79-137	.577	1-4	.250	35-54	.648	24	37	61	6.1	19	29	23	15	18	194	19.4

Player Averages

Games Played	Minutes/ game	Points/ game	FG Pct	3FG Pct	FT Pct	Rebounds/ game	Assists/ game	Turnovers/ game	Assist/Turnover ratio	Steals/ game	Blocks/ game
10	30.2	19.4	57.7	25.0	64.8	6.1	2.9	2.3	1.3	1.8	1.5

EDWARDS, Joyce

				Field Goals		3-Point		F-Throws		Rebounds									Scoring	
SEASON	TEAM	GP-GS	MIN/AVG	FG-FGA	FG%	3FG-3FGA	3FG%	FT-FTA	FT%	OFF	DEF	TOT	AVG	PF-FO	A	TO	BLK	STL	PTS	AVG
2024-25	SC	39-1	831/21.3	193-365	.529	0-3	.000	108-139	.777	85	110	195	5.0	63-0	48	69	21	42	494	12.7
2025-26	SC	10-10	302/30.2	79-137	.577	1-4	.250	35-54	.648	24	37	61	6.1	19-0	29	23	15	18	194	19.4
TOTAL		49-11	1133/23.1	272-502	.542	1-7	.143	143-193	.741	109	147	256	5.2	82-0	77	92	36	60	688	14.0

PLAYER GAME-BY-GAME AND CAREER STATS

#11 OKOT, Madina

Opponent	Date	GS	MIN	Total		3-Pointers		Free throws		Rebounds				PF	A	TO	BLK	STL	PTS	AVG
				FG-FGA	PCT	3FG-3FGA	PCT	FT-FTA	PCT	OFF	DEF	TOT	AVG							
Grand Canyon	11/03/2025	*	17:26	4-5	.800	0-0	.000	4-6	.667	0	4	4	4.0	3	0	0	0	0	12	12.0
Bowling Green	11/07/2025	*	21:36	6-9	.667	0-0	.000	1-1	1.000	4	7	11	7.5	0	2	0	4	1	13	12.5
Clemson	11/11/2025	*	24:46	5-12	.417	0-0	.000	2-2	1.000	4	8	12	9.0	3	1	1	1	1	12	12.3
vs Southern California	11/15/2025	*	34:45	3-9	.333	0-0	.000	0-0	.000	5	10	15	10.5	2	0	2	2	1	6	10.8
Winthrop	11/19/2025	*	25:16	10-12	.833	0-0	.000	3-4	.750	6	5	11	10.6	2	3	2	3	1	23	13.2
Queens (NC)	11/23/2025	*	19:16	5-8	.625	0-1	.000	4-4	1.000	2	10	12	10.8	1	0	0	3	2	14	13.3
vs Duke	11/26/2025	*	30:32	11-18	.611	0-1	.000	1-2	.500	5	8	13	11.1	1	2	3	2	4	23	14.7
vs Texas	11/27/2025	*	34:05	5-7	.714	0-0	.000	2-2	1.000	1	10	11	11.1	5	1	4	1	1	12	14.4
at Louisville	12/04/2025	*	32:38	10-16	.625	0-0	.000	3-7	.429	3	10	13	11.3	2	2	4	0	0	23	15.3
N.C. Central	12/07/2025	*	10:53	5-9	.556	0-0	.000	0-1	.000	7	2	9	11.1	0	1	2	1	1	10	14.8
Totals			10 251:14	64-105	.610	0-2	.000	20-29	.690	37	74	111	11.1	19	12	18	17	12	148	14.8

Player Averages

Games Played	Minutes/ game	Points/ game	FG Pct	3FG Pct	FT Pct	Rebounds/ game	Assists/ game	Turnovers/ game	Assist/Turnover ratio	Steals/ game	Blocks/ game
10	25.1	14.8	61.0	0.0	69.0	11.1	1.2	1.8	0.7	1.2	1.7

OKOT, Madina

				Field Goals		3-Point		F-Throws		Rebounds										Scoring	
SEASON	TEAM	GP-GS	MIN/AVG	FG-FGA	FG%	3FG-3FGA	3FG%	FT-FTA	FT%	OFF	DEF	TOT	AVG	PF-FO	A	TO	BLK	STL	PTS	AVG	
2024-25	MS	34-34	769/22.6	170-262	.649	0-0	.000	45-72	.625	120	205	325	9.6	90-3	24	85	38	46	385	11.3	
2025-26	SC	10-10	251/25.1	64-105	.610	0-2	.000	20-29	.690	37	74	111	11.1	19-1	12	18	17	12	148	14.8	
TOTAL FOR SC		10-10	251/25.1	64-105	.610	0-2	.000	20-29	.690	37	74	111	11.1	19-1	12	18	17	12	148	14.8	
TOTAL		44-44	1020/23.2	234-367	.638	0-2	.000	65-101	.644	157	279	436	9.9	109-4	36	103	55	58	533	12.1	

#15 TAC, Adhel

Opponent	Date	GS	MIN	Total		3-Pointers		Free throws		Rebounds				PF	A	TO	BLK	STL	PTS	AVG
				FG-FGA	PCT	3FG-3FGA	PCT	FT-FTA	PCT	OFF	DEF	TOT	AVG							
Grand Canyon	11/03/2025		14:45	1-2	.500	0-0	.000	0-1	.000	1	5	6	6.0	1	0	0	1	0	2	2.0
Bowling Green	11/07/2025		12:21	1-2	.500	0-0	.000	1-2	.500	1	1	2	4.0	1	2	0	1	1	3	2.5
Clemson	11/11/2025		05:57	0-0	.000	0-0	.000	0-0	.000	0	3	3	3.7	1	0	1	0	0	0	1.7
Winthrop	11/19/2025		12:44	3-3	1.000	0-0	.000	0-0	.000	1	4	5	4.0	2	0	0	1	0	6	2.8
Queens (NC)	11/23/2025		18:49	3-3	1.000	0-0	.000	5-8	.625	1	9	10	5.2	0	1	2	1	1	11	4.4
vs Duke	11/26/2025		07:02	0-0	.000	0-0	.000	2-2	1.000	1	0	1	4.5	1	0	1	0	0	2	4.0
vs Texas	11/27/2025		07:58	1-1	1.000	0-0	.000	0-0	.000	0	4	4	4.4	0	0	0	2	0	2	3.7
at Louisville	12/04/2025		03:23	0-1	.000	0-0	.000	1-2	.500	1	0	1	4.0	1	0	0	0	0	1	3.4
N.C. Central	12/07/2025	*	21:59	0-3	.000	0-0	.000	2-2	1.000	1	2	3	3.9	1	0	1	1	0	2	3.2
Totals			1 104:58	9-15	.600	0-0	.000	11-17	.647	7	28	35	3.9	8	3	5	7	2	29	3.2

Player Averages

Games Played	Minutes/ game	Points/ game	FG Pct	3FG Pct	FT Pct	Rebounds/ game	Assists/ game	Turnovers/ game	Assist/Turnover ratio	Steals/ game	Blocks/ game
9	11.7	3.2	60.0	0.0	64.7	3.9	0.3	0.6	0.6	0.2	0.8

TAC, Adhel

				Field Goals		3-Point		F-Throws		Rebounds									Scoring	
SEASON	TEAM	GP-GS	MIN/AVG	FG-FGA	FG%	3FG-3FGA	3FG%	FT-FTA	FT%	OFF	DEF	TOT	AVG	PF-FO	A	TO	BLK	STL	PTS	AVG
2024-25	SC	23-0	87/3.8	13-31	.419	0-0	.000	10-16	.625	15	22	37	1.6	20-0	1	5	2	2	36	1.6
2025-26	SC	9-1	105/11.7	9-15	.600	0-0	.000	11-17	.647	7	28	35	3.9	8-0	3	5	7	2	29	3.2
TOTAL		32-1	192/6.0	22-46	.478	0-0	.000	21-33	.636	22	50	72	2.3	28-0	4	10	9	4	65	2.0

PLAYER GAME-BY-GAME AND CAREER STATS

#24 MCDOWELL, Ayla

Opponent	Date	GS	MIN	Total		3-Pointers		Free throws		Rebounds				PF	A	TO	BLK	STL	PTS	AVG
				FG-FGA	PCT	3FG-3FGA	PCT	FT-FTA	PCT	OFF	DEF	TOT	AVG							
Grand Canyon	11/03/2025		17:29	3-5	.600	0-1	.000	3-4	.750	1	1	2	2.0	2	0	2	0	1	9	9.0
Bowling Green	11/07/2025		22:47	3-5	.600	2-3	.667	3-4	.750	1	2	3	2.5	1	1	2	0	2	11	10.0
Clemson	11/11/2025		04:09	0-0	.000	0-0	.000	0-0	.000	0	1	1	2.0	0	0	0	0	0	0	6.7
vs Southern California	11/15/2025		03:33	0-1	.000	0-1	.000	0-0	.000	0	0	0	1.5	0	0	0	0	0	0	5.0
Winthrop	11/19/2025		25:43	3-4	.750	0-1	.000	1-1	1.000	2	2	4	2.0	0	1	0	0	1	7	5.4
Queens (NC)	11/23/2025		16:45	1-4	.250	1-4	.250	4-4	1.000	2	3	5	2.5	1	1	0	1	1	7	5.7
vs Duke	11/26/2025		01:31	0-1	.000	0-0	.000	0-0	.000	0	0	0	2.1	0	0	0	0	0	0	4.9
vs Texas	11/27/2025		05:12	0-3	.000	0-1	.000	0-0	.000	1	0	1	2.0	0	0	0	0	0	0	4.3
at Louisville	12/04/2025		08:42	1-2	.500	1-1	1.000	0-0	.000	2	0	2	2.0	1	1	1	0	0	3	4.1
N.C. Central	12/07/2025		26:56	5-9	.556	5-7	.714	1-2	.500	0	2	2	2.0	2	0	3	0	0	16	5.3
Totals		0	132:47	16-34	.471	9-19	.474	12-15	.800	9	11	20	2.0	7	4	8	1	5	53	5.3

Player Averages

Games Played	Minutes/ game	Points/ game	FG Pct	3FG Pct	FT Pct	Rebounds/ game	Assists/ game	Turnovers/ game	Assist/Turnover ratio	Steals/ game	Blocks/ game
10	13.3	5.3	47.1	47.4	80.0	2.0	0.4	0.8	0.5	0.5	0.1

#25 JOHNSON, Raven

Opponent	Date	GS	MIN	Total		3-Pointers		Free throws		Rebounds				PF	A	TO	BLK	STL	PTS	AVG
				FG-FGA	PCT	3FG-3FGA	PCT	FT-FTA	PCT	OFF	DEF	TOT	AVG							
Grand Canyon	11/03/2025	*	25:48	4-6	.667	3-5	.600	0-0	.000	0	8	8	8.0	2	7	1	0	3	11	11.0
Bowling Green	11/07/2025	*	23:00	4-7	.571	1-2	.500	2-2	1.000	0	5	5	6.5	2	11	2	0	3	11	11.0
Clemson	11/11/2025	*	30:02	1-5	.200	0-0	.000	0-0	.000	0	1	1	4.7	1	2	2	1	0	2	8.0
vs Southern California	11/15/2025	*	37:41	6-12	.500	2-3	.667	0-0	.000	4	7	11	6.3	2	4	2	2	0	14	9.5
Winthrop	11/19/2025	*	21:20	1-4	.250	0-3	.000	1-2	.500	0	4	4	5.8	2	10	1	1	0	3	8.2
Queens (NC)	11/23/2025	*	22:09	5-6	.833	2-2	1.000	0-0	.000	0	2	2	5.2	2	7	2	2	3	12	8.8
vs Duke	11/26/2025	*	25:45	3-8	.375	0-2	.000	4-5	.800	3	2	5	5.1	3	6	1	0	0	10	9.0
vs Texas	11/27/2025	*	35:13	3-6	.500	0-0	.000	1-2	.500	0	0	0	4.5	0	6	3	1	2	7	8.8
at Louisville	12/04/2025	*	38:18	4-7	.571	1-2	.500	2-2	1.000	1	3	4	4.4	2	8	1	1	0	11	9.0
N.C. Central	12/07/2025	*	29:24	2-9	.222	1-5	.200	2-2	1.000	1	2	3	4.3	0	5	3	1	6	7	8.8
Totals		10	288:40	33-70	.471	10-24	.417	12-15	.800	9	34	43	4.3	16	66	18	9	17	88	8.8

Player Averages

Games Played	Minutes/ game	Points/ game	FG Pct	3FG Pct	FT Pct	Rebounds/ game	Assists/ game	Turnovers/ game	Assist/Turnover ratio	Steals/ game	Blocks/ game
10	28.9	8.8	47.1	41.7	80.0	4.3	6.6	1.8	3.7	1.7	0.9

JOHNSON, Raven

				Field Goals		3-Point		F-Throws		Rebounds				Scoring						
SEASON	TEAM	GP-GS	MIN/AVG	FG-FGA	FG%	3FG-3FGA	3FG%	FT-FTA	FT%	OFF	DEF	TOT	AVG	PF-FO	A	TO	BLK	STL	PTS	AVG
2021-22	SC	2-0	8/4.2	0-1	.000	0-0	.000	0-0	.000	0	1	1	0.5	0-0	0	1	0	0	0	0.0
2022-23	SC	36-3	674/18.7	60-163	.368	14-58	.241	17-26	.654	20	74	94	2.6	38-0	123	52	13	40	151	4.2
2023-24	SC	37-35	1034/27.9	120-271	.443	28-80	.350	30-49	.612	37	156	193	5.2	44-0	179	58	7	78	298	8.1
2024-25	SC	39-39	944/24.2	76-217	.350	23-78	.295	15-22	.682	49	125	174	4.5	35-0	108	39	24	54	190	4.9
2025-26	SC	10-10	289/28.9	33-70	.471	10-24	.417	12-15	.800	9	34	43	4.3	16-0	66	18	9	17	88	8.8
TOTAL		124-87	2950/23.8	289-722	.400	75-240	.313	74-112	.661	115	390	505	4.1	133-0	476	168	53	189	727	5.9

PLAYER GAME-BY-GAME AND CAREER STATS

#30 DAUDA, Maryam

Opponent	Date	GS	MIN	Total		3-Pointers		Free throws		Rebounds										
				FG-FGA	PCT	3FG-3FGA	PCT	FT-FTA	PCT	OFF	DEF	TOT	AVG	PF	A	TO	BLK	STL	PTS	AVG
Grand Canyon	11/03/2025		09:58	0-0	.000	0-0	.000	0-0	.000	0	2	2	2.0	1	0	0	0	0	0	0.0
Bowling Green	11/07/2025		20:53	2-3	.667	0-0	.000	5-6	.833	4	4	8	5.0	1	0	2	1	1	9	4.5
Clemson	11/11/2025		15:59	1-4	.250	0-1	.000	0-0	.000	3	4	7	5.7	1	0	1	1	1	2	3.7
vs Southern California	11/15/2025		06:53	1-2	.500	0-0	.000	0-0	.000	2	1	3	5.0	1	0	1	1	1	2	3.3
Winthrop	11/19/2025		11:43	0-2	.000	0-1	.000	0-2	.000	0	1	1	4.2	2	1	1	1	0	0	2.6
Queens (NC)	11/23/2025		16:45	4-7	.571	0-2	.000	1-2	.500	0	5	5	4.3	2	0	2	1	0	9	3.7
vs Duke	11/26/2025		10:35	0-1	.000	0-0	.000	0-0	.000	2	4	6	4.6	3	0	0	0	0	0	3.1
vs Texas	11/27/2025		02:09	0-0	.000	0-0	.000	0-0	.000	0	0	0	4.0	0	0	1	0	0	0	2.8
N.C. Central	12/07/2025		18:15	2-6	.333	0-2	.000	2-2	1.000	3	4	7	4.3	0	2	0	3	0	6	3.1
Totals		0	113:10	10-25	.400	0-6	.000	8-12	.667	14	25	39	4.3	11	3	8	8	3	28	3.1

Player Averages

Games Played	Minutes/ game	Points/ game	FG Pct	3FG Pct	FT Pct	Rebounds/ game	Assists/ game	Turnovers/ game	Assist/Turnover ratio	Steals/ game	Blocks/ game
9	12.6	3.1	40.0	0.0	66.7	4.3	0.3	0.9	0.4	0.3	0.9

DAUDA, Maryam

				Field Goals		3-Point		F-Throws		Rebounds				Scoring						
SEASON	TEAM	GP-GS	MIN/AVG	FG-FGA	FG%	3FG-3FGA	3FG%	FT-FTA	FT%	OFF	DEF	TOT	AVG	PF-FO	A	TO	BLK	STL	PTS	AVG
2022-23	AR	35-0	386/11.0	47-112	.420	6-24	.250	23-31	.742	45	49	94	2.7	64-0	23	42	22	11	123	3.5
2023-24	AR	33-33	947/28.7	121-266	.455	29-91	.319	62-82	.756	79	130	209	6.3	96-1	41	67	74	24	333	10.1
2024-25	SC	34-0	217/6.4	18-56	.321	6-24	.250	27-36	.750	26	39	65	1.9	29-0	4	14	5	8	69	2.0
2025-26	SC	9-0	113/12.6	10-25	.400	0-6	.000	8-12	.667	14	25	39	4.3	11-0	3	8	8	3	28	3.1
TOTAL FOR SC		43-0	330/7.7	28-81	.346	6-30	.200	35-48	.729	40	64	104	2.4	40-0	7	22	13	11	97	2.3
TOTAL		111-33	1663/15.0	196-459	.427	41-145	.283	120-161	.745	164	243	407	3.7	200-1	71	131	109	46	553	5.0

#44 MAKEER, Agot

Opponent	Date	GS	MIN	Total		3-Pointers		Free throws		Rebounds										
				FG-FGA	PCT	3FG-3FGA	PCT	FT-FTA	PCT	OFF	DEF	TOT	AVG	PF	A	TO	BLK	STL	PTS	AVG
Grand Canyon	11/03/2025		19:06	1-3	.333	1-2	.500	2-2	1.000	0	2	2	2.0	4	2	3	3	0	5	5.0
Bowling Green	11/07/2025		15:45	4-6	.667	1-2	.500	3-5	.600	1	2	3	2.5	0	0	2	1	1	12	8.5
Clemson	11/11/2025		19:13	2-4	.500	2-3	.667	0-0	.000	0	4	4	3.0	3	0	1	1	0	6	7.7
vs Southern California	11/15/2025		17:03	2-6	.333	0-2	.000	0-0	.000	1	3	4	3.3	1	1	2	0	1	4	6.8
Winthrop	11/19/2025		21:17	6-10	.600	0-1	.000	0-0	.000	3	4	7	4.0	2	4	0	0	2	12	7.8
Queens (NC)	11/23/2025		19:49	1-5	.200	0-4	.000	2-2	1.000	0	3	3	3.8	1	1	1	1	1	4	7.2
vs Duke	11/26/2025		16:24	2-6	.333	0-1	.000	0-0	.000	1	3	4	3.9	1	1	0	0	0	4	6.7
vs Texas	11/27/2025		03:17	0-1	.000	0-1	.000	0-0	.000	0	2	2	3.6	1	0	0	0	0	0	5.9
Totals		0	131:54	18-41	.439	4-16	.250	7-9	.778	6	23	29	3.6	13	9	9	6	5	47	5.9

Player Averages

Games Played	Minutes/ game	Points/ game	FG Pct	3FG Pct	FT Pct	Rebounds/ game	Assists/ game	Turnovers/ game	Assist/Turnover ratio	Steals/ game	Blocks/ game
8	16.5	5.9	43.9	25.0	77.8	3.6	1.1	1.1	1.0	0.6	0.8

2025-26 SOUTH CAROLINA GAME-BY-GAME STATS

			Total		3-Pointers		Free throws		Rebounds											
Opponent	Date	Score		FG-FGA	PCT	3FG-3FGA	PCT	FT-FTA	PCT	OFF	DEF	TOT	AVG	PF	A	TO	BLK	STL	PTS	AVG
Grand Canyon	11/03/2025	94-54	W	34-57	.596	9-19	.474	17-25	.680	5	33	38	38.0	21	19	11	6	6	94	94.0
Bowling Green	11/07/2025	114-47	W	42-66	.636	6-14	.429	24-30	.800	16	37	53	45.5	9	26	14	11	9	114	104.0
Clemson	11/11/2025	65-37	W	26-58	.448	5-9	.556	8-10	.800	11	37	48	46.3	10	11	12	10	3	65	91.0
vs Southern California	11/15/2025	69-52	W	29-71	.408	4-10	.400	7-12	.583	21	35	56	48.8	14	16	17	7	7	69	85.5
Winthrop	11/19/2025	106-56	W	43-67	.642	5-17	.294	15-24	.625	18	28	46	48.2	13	25	9	7	6	106	89.6
Queens (NC)	11/23/2025	121-49	W	43-65	.662	8-20	.400	27-34	.794	10	41	51	48.7	12	26	11	12	14	121	94.8
vs Duke	11/26/2025	83-66	W	35-74	.473	1-10	.100	12-16	.750	15	28	43	47.9	13	18	7	3	9	83	93.1
vs Texas	11/27/2025	64-66	L	25-58	.431	2-7	.286	12-16	.750	11	21	32	45.9	13	17	13	5	7	64	89.5
at Louisville	12/04/2025	79-77	W	30-61	.492	8-16	.500	11-17	.647	10	24	34	44.6	10	19	12	1	4	79	88.3
N.C. Central	12/07/2025	106-42	W	34-67	.507	11-21	.524	27-34	.794	22	23	45	44.6	10	19	17	10	16	106	90.1
Total		901		341-644	.530	59-143	.413	160-218	.734	139	307	446	44.6	125	196	123	72	81	901	90.1
Opponents		546		204-640	.319	59-224	.263	79-106	.745	128	176	304	30.4	188	110	173	26	47	546	54.6

South Carolina Averages

Games Played	Points/game	FG Pct	3FG Pct	FT Pct	Rebounds/game	Assists/game	Turnovers/game	Assist/Turnover ratio	Steals/game	Blocks/game
10	90.1	53.0	41.3	73.4	44.6	19.6	12.3	1.6	8.1	7.2

2025-26 OPPONENT GAME-BY-GAME STATS

				Total		3-Pointers		Free throws		Rebounds											
Opponent	Date	Score		FG-FGA	PCT	3FG-3FGA	PCT	FT-FTA	PCT	OFF	DEF	TOT	AVG	PF	A	TO	BLK	STL	PTS	AVG	
Grand Canyon	11/03/2025	94-54	W	17-62	.274	7-34	.206	13-17	.765	12	19	31	31.0	26	6	17	3	3	54	54.0	
Bowling Green	11/07/2025	114-47	W	18-74	.243	6-26	.231	5-6	.833	17	8	25	28.0	20	9	18	2	11	47	50.5	
Clemson	11/11/2025	65-37	W	14-61	.230	5-33	.152	4-4	1.000	10	21	31	29.0	14	9	10	1	5	37	46.0	
vs Southern California	11/15/2025	69-52	W	22-67	.328	1-14	.071	7-10	.700	10	22	32	29.8	13	15	13	7	5	52	47.5	
Winthrop	11/19/2025	106-56	W	21-66	.318	7-21	.333	7-9	.778	15	9	24	28.6	20	8	15	0	2	56	49.2	
Queens (NC)	11/23/2025	121-49	W	16-70	.229	9-28	.321	8-10	.800	12	13	25	28.0	25	11	21	1	5	49	49.2	
vs Duke	11/26/2025	83-66	W	24-61	.393	8-20	.400	10-13	.769	10	25	35	29.0	12	17	16	4	1	66	51.6	
vs Texas	11/27/2025	64-66	L	25-60	.417	1-6	.167	15-20	.750	16	23	39	30.3	18	15	15	5	8	66	53.4	
at Louisville	12/04/2025	79-77	W	31-65	.477	9-23	.391	6-10	.600	11	23	34	30.7	16	11	12	1	3	77	56.0	
N.C. Central	12/07/2025	106-42	W	16-54	.296	6-19	.316	4-7	.571	15	13	28	30.4	24	9	36	2	4	42	54.6	
Total		546		204-640	.319	59-224	.263	79-106	.745	128	176	304	30.4	188	110	173	26	47	546	54.6	
South Carolina		901		341-644	.530	59-143	.413	160-218	.734	139	307	446	44.6	125	196	123	72	81	901	90.1	

Opponents Averages

Games Played	Points/game	FG Pct	3FG Pct	FT Pct	Rebounds/game	Assists/game	Turnovers/game	Assist/Turnover ratio	Steals/game	Blocks/game
10	54.6	31.9	26.3	74.5	30.4	11.0	17.3	0.6	4.7	2.6

2025-26 SOUTH CAROLINA POINTS-REBOUNDS-ASSISTS

Opponent	Date	Score		00	1	5	8	11	15	24	25	30	44
				LATSON,TA'	MCDANIEL,M	JOHNSON,TE	EDWARDS,JO	OKOT,MADIN	TAC,ADHEL	MCDOWELL,A	JOHNSON,RA	DAUDA,MARY	MAKEER,AGO
Grand Canyon	11/03/2025	94-54	W	20-1-4	3-0-2	19-5-3	13-5-1	12-4-0	2-6-0	9-2-0	11-8-7	0-2-0	5-2-2
Bowling Green	11/07/2025	114-47	W	17-4-4	DNP	14-7-3	24-4-3	13-11-2	3-2-2	11-3-1	11-5-11	9-8-0	12-3-0
Clemson	11/11/2025	65-37	W	12-8-3	DNP	13-2-3	18-8-2	12-12-1	0-3-0	0-1-0	2-1-2	2-7-0	6-4-0
vs Southern California	11/15/2025	69-52	W	12-4-2	DNP	14-4-5	17-10-4	6-15-0	DNP	0-0-0	14-11-4	2-3-0	4-4-1
Winthrop	11/19/2025	106-56	W	24-5-4	DNP	9-1-1	22-5-1	23-11-3	6-5-0	7-4-1	3-4-10	0-1-1	12-7-4
Queens (NC)	11/23/2025	121-49	W	24-2-5	2-1-3	13-1-5	25-4-3	14-12-0	11-10-1	7-5-1	12-2-7	9-5-0	4-3-1
vs Duke	11/26/2025	83-66	W	12-1-2	5-1-1	5-1-0	22-6-6	23-13-2	2-1-0	0-0-0	10-5-6	0-6-0	4-4-1
vs Texas	11/27/2025	64-66	L	16-4-2	0-0-2	11-0-3	16-4-3	12-11-1	2-4-0	0-1-0	7-0-6	0-0-0	0-2-0
at Louisville	12/04/2025	79-77	W	9-1-5	0-1-0	20-7-3	12-5-0	23-13-2	1-1-0	3-2-1	11-4-8	DNP	DNP
N.C. Central	12/07/2025	106-42	W	32-4-2	8-3-3	DNP	25-10-6	10-9-1	2-3-0	16-2-0	7-3-5	6-7-2	DNP

2025-26 VS. RANKED OPPONENTS

Game Records

Record	Overall	Home	Away	Neutral
ALL GAMES	2-1	0-0	1-0	1-1
CONFERENCE	0-0	0-0	0-0	0-0
NON-CONFERENCE	2-1	0-0	1-0	1-1

Score by Periods

Team	1st	2nd	3rd	4th	OT	TOT
South Carolina	66	40	62	44	0	212
Opponents	64	38	51	42	0	195

Team Box Score

No.	Player				Total		3-Point		F-Throw		Rebounds											
		GP-GS	MIN	AVG	FG-FGA	FG%	3FG-3FGA	3FG%	FT-FTA	FT%	OFF	DEF	TOT	AVG	PF	DQ	A	TO	BLK	STL	PTS	AVG
5	JOHNSON, Tessa	3-3	111:27	37.2	16-34	.471	7-14	.500	6-6	1.000	3	8	11	3.7	6	0	11	6	0	1	45	15.0
8	EDWARDS, Joyce	3-3	101:02	33.7	19-44	.432	1-1	1.000	6-14	.429	6	13	19	6.3	7	0	7	9	3	7	45	15.0
11	OKOT, Madina	3-3	101:28	33.8	18-32	.563	0-0	.000	5-9	.556	9	30	39	13.0	9	1	3	10	3	2	41	13.7
00	LATSON, Ta'Niya	3-3	98:28	32.8	13-35	.371	2-5	.400	9-10	.900	6	3	9	3.0	6	0	9	5	0	3	37	12.3
25	JOHNSON, Raven	3-3	111:12	37.1	13-25	.520	3-5	.600	3-4	.750	5	10	15	5.0	4	0	18	6	4	2	32	10.7
44	MAKEER, Agot	2-0	20:20	10.2	2-7	.286	0-3	.000	0-0	.000	1	5	6	3.0	2	0	1	2	0	1	4	2.0
15	TAC, Adhel	2-0	11:21	5.7	1-2	.500	0-0	.000	1-2	.500	1	4	5	2.5	1	0	0	0	2	0	3	1.5
30	DAUDA, Maryam	2-0	09:02	4.5	1-2	.500	0-0	.000	0-0	.000	2	1	3	1.5	1	0	0	2	1	1	2	1.0
24	MCDOWELL, Ayla	3-0	17:27	5.8	1-6	.167	1-3	.333	0-0	.000	3	0	3	1.0	1	0	1	1	0	0	3	1.0
1	MCDANIEL, Maddy	2-0	18:13	9.1	0-3	.000	0-2	.000	0-0	.000	0	1	1	0.5	0	0	2	0	0	1	0	0.0
Team											6	5	11				1					
Total		3	600		84-190	.442	14-33	.424	30-45	.667	42	80	122	40.7	37	1	52	42	13	18	212	70.7
Opponents		3	600		78-192	.406	11-43	.256	28-40	.700	37	68	105	35.0	47	0	41	40	13	16	195	65.0

Team Results

Date	Opponent		Score	Att.
11/15/2025	vs Southern California	W	69-52	8150
11/27/2025	vs Texas	L	64-66	1950
12/04/2025	at Louisville	W	79-77	10012

LAST 5 GAMES

Game Records

Record	Overall	Home	Away	Neutral
ALL GAMES	4-1	2-0	1-0	1-1
CONFERENCE	0-0	0-0	0-0	0-0
NON-CONFERENCE	4-1	2-0	1-0	1-1

Score by Periods

Team	1st	2nd	3rd	4th	OT	TOT
South Carolina	115	103	118	117	0	453
Opponents	82	61	78	79	0	300

Team Box Score

No.	Player				Total		3-Point		F-Throw		Rebounds											
		GP-GS	MIN	AVG	FG-FGA	FG%	3FG-3FGA	3FG%	FT-FTA	FT%	OFF	DEF	TOT	AVG	PF	DQ	A	TO	BLK	STL	PTS	AVG
8	EDWARDS, Joyce	5-5	156:32	31.3	39-68	.574	1-2	.500	21-30	.700	9	20	29	5.8	11	0	18	12	6	14	100	20.0
00	LATSON, Ta'Niya	5-5	158:22	31.7	33-63	.524	9-15	.600	18-20	.900	5	7	12	2.4	8	0	16	7	2	8	93	18.6
11	OKOT, Madina	5-5	127:24	25.5	36-58	.621	0-2	.000	10-16	.625	18	40	58	11.6	9	1	6	13	7	8	82	16.4
5	JOHNSON, Tessa	4-4	127:16	31.8	19-37	.514	9-17	.529	2-2	1.000	2	7	9	2.3	5	0	11	4	1	1	49	12.3
25	JOHNSON, Raven	5-5	150:49	30.2	17-36	.472	4-11	.364	9-11	.818	5	9	14	2.8	7	0	32	10	5	11	47	9.4
24	MCDOWELL, Ayla	5-0	59:06	11.8	7-19	.368	7-13	.538	5-6	.833	5	5	10	2.0	4	0	2	4	1	1	26	5.2
30	DAUDA, Maryam	4-0	47:44	11.9	6-14	.429	0-4	.000	3-4	.750	5	13	18	4.5	5	0	2	3	4	0	15	3.8
15	TAC, Adhel	5-1	59:11	11.8	4-8	.500	0-0	.000	10-14	.714	4	15	19	3.8	3	0	1	4	4	1	18	3.6
1	MCDANIEL, Maddy	5-0	74:06	14.8	3-10	.300	0-4	.000	9-12	.750	1	5	6	1.2	3	0	9	0	0	5	15	3.0
44	MAKEER, Agot	3-0	39:30	13.2	3-12	.250	0-6	.000	2-2	1.000	1	8	9	3.0	3	0	2	1	1	1	8	2.7
Team											13	8	21				2					
Total		5	1000		167-325	.514	30-74	.405	89-117	.761	68	137	205	41.0	58	1	99	60	31	50	453	90.6
Opponents		5	1000		112-310	.361	33-96	.344	43-60	.717	64	97	161	32.2	95	3	63	100	13	21	300	60.0

Team Results

Date	Opponent		Score	Att.
11/23/2025	Queens (NC)	W	121-49	15222
11/26/2025	vs Duke	W	83-66	2386
11/27/2025	vs Texas	L	64-66	1950
12/04/2025	at Louisville	W	79-77	10012
12/07/2025	N.C. Central	W	106-42	15677

2025-26 OVERALL STATS

Game Records

Record	Overall	Home	Away	Neutral
ALL GAMES	9-1	6-0	1-0	2-1
CONFERENCE	0-0	0-0	0-0	0-0
NON-CONFERENCE	9-1	6-0	1-0	2-1

Score by Periods

Team	1st	2nd	3rd	4th	OT	TOT
South Carolina	239	222	225	215	0	901
Opponents	142	132	154	118	0	546

Team Box Score

No.	Player				Total		3-Point		F-Throw		Rebounds											
		GP-GS	MIN	AVG	FG-FGA	FG%	3FG-3FGA	3FG%	FT-FTA	FT%	OFF	DEF	TOT	AVG	PF	DQ	A	TO	BLK	STL	PTS	AVG
8	EDWARDS, Joyce	10-10	301:50	30.2	79-137	.577	1-4	.250	35-54	.648	24	37	61	6.1	19	0	29	23	15	18	194	19.4
00	LATSON, Ta'Niya	10-10	305:45	30.6	63-117	.538	13-24	.542	39-48	.813	8	26	34	3.4	16	0	33	17	5	11	178	17.8
11	OKOT, Madina	10-10	251:14	25.1	64-105	.610	0-2	.000	20-29	.690	37	74	111	11.1	19	1	12	18	17	12	148	14.8
5	JOHNSON, Tessa	9-9	287:56	32.0	45-88	.511	21-43	.488	7-7	1.000	6	22	28	3.1	11	0	26	14	4	3	118	13.1
25	JOHNSON, Raven	10-10	288:40	28.9	33-70	.471	10-24	.417	12-15	.800	9	34	43	4.3	16	0	66	18	9	17	88	8.8
44	MAKEER, Agot	8-0	131:54	16.5	18-41	.439	4-16	.250	7-9	.778	6	23	29	3.6	13	0	9	9	6	5	47	5.9
24	MCDOWELL, Ayla	10-0	132:47	13.3	16-34	.471	9-19	.474	12-15	.800	9	11	20	2.0	7	0	4	8	1	5	53	5.3
15	TAC, Adhel	9-1	104:58	11.7	9-15	.600	0-0	.000	11-17	.647	7	28	35	3.9	8	0	3	5	7	2	29	3.2
30	DAUDA, Maryam	9-0	113:10	12.6	10-25	.400	0-6	.000	8-12	.667	14	25	39	4.3	11	0	3	8	8	3	28	3.1
1	MCDANIEL, Maddy	6-0	81:47	13.6	4-12	.333	1-5	.200	9-12	.750	1	5	6	1.0	5	0	11	0	0	5	18	3.0
Team											18	22	40					3				
Total		10	2000		341-644	.530	59-143	.413	160-218	.734	139	307	446	44.6	125	1	196	123	72	81	901	90.1
Opponents		10	2000		204-640	.319	59-224	.263	79-106	.745	128	176	304	30.4	188	5	110	173	26	47	546	54.6

Team Statistics

	SC	OPP
Scoring	901	546
Points per game	90.1	54.6
Scoring margin	+35.5	-
Field goals-att	341-644	204-640
Field goal pct	.530	.319
3 point fg-att	59-143	59-224
3-point FG pct	.413	.263
3-pt FG made per game	5.9	5.9
Free throws-att	160-218	79-106
Free throw pct	.734	.745
F-Throws made per game	16.0	7.9
Rebounds	446	304
Rebounds per game	44.6	30.4
Rebounding margin	+14.2	-
Assists	196	110
Assists per game	19.6	11.0
Turnovers	123	173
Turnovers per game	12.3	17.3
Turnover margin	+5.0	-
Assist/turnover ratio	1.6	0.6
Steals	81	47
Steals per game	8.1	4.7
Blocks	72	26
Blocks per game	7.2	2.6
Winning streak	2	-
Home win streak	6	-
Attendance	95559	10012
Home games-Avg/Game	6-15927	1-10012
Neutral site-Avg/Game	-	3-4162

Team Results

Date	Opponent		Score	Att.
11/03/2025	Grand Canyon	W	94-54	15601
11/07/2025	Bowling Green	W	114-47	16649
11/11/2025	Clemson	W	65-37	16623
11/15/2025	vs Southern California	W	69-52	8150
11/19/2025	Winthrop	W	106-56	15787
11/23/2025	Queens (NC)	W	121-49	15222
11/26/2025	vs Duke	W	83-66	2386
11/27/2025	vs Texas	L	64-66	1950
12/04/2025	at Louisville	W	79-77	10012
12/07/2025	N.C. Central	W	106-42	15677