

SOUTH CAROLINA WOMEN'S BASKETBALL



3 NCAA CHAMPIONSHIPS • 7 NCAA FINAL FOURS • 9 SEC CHAMPIONSHIPS • 9 SEC TOURNAMENT TITLES • 26 ALL-AMERICANS

Assoc. AD Comms/PR: Diana Koval | Office: 803.777.7977 | Cell: 314.369.6050 | Email: dkoval@mailbox.sc.edu
Web: www.GamecocksOnline.com | X: @GamecockWBB | Instagram: @GamecockWBB | TikTok: @GamecockWBB | Facebook: @GamecockWBB

GAME 13 • DECEMBER 20, 2025 • FORT MYERS, FL • ALICO ARENA

#3/3 GAMECOCKS

11-1

Head Coach: Dawn Staley
Record at SC: 486-112 (18th)
Career Record: 658-192 (26th)
Top Scorer: Joyce Edwards (21.4)
Top Rebounder: Madina Okot (11.0)



FGCU
3-5
Head Coach: Raina Harmon
Record at FGCU: 3-5 (1st)
Career Record: Same
Top Scorer: Sinai Douglas (10.4)
Top Rebounder: Sinai Douglas (6.3)

SCHEDULE/RESULTS

Oct. 24	Anderson (Exh.)	W, 112-31
Oct. 30	vs. #11/11 N. Carolina (Exh.)	W, 91-82
Nov. 3	Grand Canyon (SECN+)	W, 94-54
Nov. 7	Bowling Green (SECN+)	W, 114-47
Nov. 11	Clemson (ESPN2)	W, 65-37

The Real SC (Los Angeles)
Nov. 15 vs. #8/10 Southern Cal (FOX) W, 69-52

Nov. 19 Winthrop (SECN) W, 106-56
Nov. 23 Queens (SECN+) W, 121-49

Players Era Championship (Las Vegas)
Nov. 26 vs. Duke W, 83-66
Nov. 27 vs. #4/4 Texas L, 64-66

ACC/SEC Challenge
Dec. 4 at #22/21 Louisville (ESPN) W, 79-77

Dec. 7	NC Central (SECN)	W, 106-42
Dec. 14	Penn State (ESPN)	W, 95-55
Dec. 18	at USF (ESPN2)	W, 103-44
Dec. 20	at Florida Gulf Coast (ESPN+)	2 p.m.
Dec. 28	Providence (SECN)	Noon
Jan. 1	Alabama* (SECN+)	2 p.m.
Jan. 4	at Florida* (SECN)	2 p.m.
Jan. 8	at Arkansas* (SECN+)	7:30 p.m.
Jan. 11	Georgia* (SECN)	2 p.m.
Jan. 15	Texas* (ESPN2)	7 p.m.
Jan. 18	at Coppin State (ESPN+)	Noon
Jan. 22	at Oklahoma* (ESPN)	7:30 p.m.
Jan. 25	Vanderbilt* (ESPN)	3 p.m.
Jan. 29	at Auburn* (SECN)	9 p.m.
Feb. 2	at Texas A&M* (ESPN2/U)	8 p.m.
Feb. 5	Mississippi State* (SECN)	6:30 p.m.
Feb. 8	Tennessee* (ABC)	3 p.m.
Feb. 14	at LSU* (ABC)	8:30 p.m.
Feb. 19	at Alabama* (SECN)	8:30 p.m.
Feb. 22	Ole Miss* (ESPN/2)	Noon
Feb. 26	Missouri* (SECN)	8 p.m.
Mar. 1	at Kentucky* (SECN+)	2 p.m.

Mar. 4-8 SEC Tournament (Greenville, SC)

* indicates SEC game
All times Eastern
TV outlet listed in parentheses (SECN is SEC Network; SECN+ is SEC Network online via the ESPN app.)

THE SERIES

SC Record/Staley Era: 1-0 / 1-0
H: 0-0 A: 0-0 N: 1-0
Current Streak: W1
Last Meeting: W, 65-46, 11/23/12 in St. Thomas, USVI

HOW TO FOLLOW

Watch: ESPN+ (Tom James, Greg Anderson, Ty Maranzatto)
Listen: 107.6 The Game; Sirius 123 or 192 and on the SiriusXM app (Brad Muller)
Live Stats: StatBroadcast

GAMECOCK NOTABLES

- South Carolina's paint dominance reached a record level on Thursday at USF as the Gamecocks tied the program best with 74 points in the paint. On the season, they are second in the nation with 52.5 paint points per game and are out-scoring opponents in that space by 30.0 points per game.
- All five Gamecock starters are shooting over 50.0 percent from the field on the season, led by Madina Okot (.625) and Joyce Edwards (.616) who rank eighth and 11th in the nation, respectively, in that category. Tessa Johnson is the only player in the SEC ranked among the league's top 15 in overall and 3-point field goal percentage, hitting 51.8 percent overall (11th) and 46.2 percent from the arc (3rd). Ta'Niya Latson is 12th in the SEC at 51.4 percent, and Raven Johnson rounds out the group at 51.8 percent. The numbers are career-bests for all but Okot, who was second in the SEC last season at 64.9 percent shooting.
- South Carolina is fourth in the nation with 7.1 blocks per game and has blocked 16.6 percent of its opponents' 2-point attempts to rank fourth in the country as well, according to Her Hoop Stats.
- The Gamecock defense has been working its way onto the wrong list for Santa, averaging 16.7 steals over the last three games. In that time, they have forced opponents into an average of 28.3 turnovers and turned those into 37.7 points per game.
- Junior guard Tessa Johnson is finding confidence and balance in her game this season, balancing her scoring with 48.3 percent of her points coming from 3-point range and 34.9 percent in the paint en route to a career-high 13.5 points per game. She also is at a career-high level with 2.6 assists per game. Over the last three games, Johnson averaged 17.0 points on 54.1 percent shooting, including 43.8 percent from 3-point range.
- The silver lining of a few Gamecocks being out for injury or illness the last three games has been the increased playing time for the bench. The quartet of Maryam Dauda, Maddy McDaniel, Ayla McDowell and Adhel Tac has seen its minutes increase to nearly 20 minutes per game each and the group has added 21.7 points and 15.7 rebounds per game in that stretch.

2

The Gamecocks are second in the nation in field goal percentage, hitting 53.6 percent of their shots.

+10.6

Over the last five games, including a pair of ranked opponents, South Carolina has a +10.6 turnover margin

40.7

The Gamecocks have allowed opponents to shoot just 40.7 percent in the paint this season.

TALE OF THE TAPE

SOUTH CAROLINA	91.6	.536	.385	5.8	.705	15.5	53.8	+37.8	.317	.252	+12.3	19.7	+6.8	7.1	9.6
	Points	FG%	3FG%	3FGM per Game	FT%	FTM per Game	Scoring Def.	Scoring Margin	FG% Def.	3FG% Def.	Reb. Margin	Assist Avg.	TO Margin	Blocks Avg.	Steals Avg.
FGCU	64.0	.450	.279	5.4	.655	12.1	64.6	-0.6	.377	.266	-1.3	12.0	-3.8	3.0	6.9

TA'NIYA LATSON

5-8 • Sr. • G • Miami, FL

tuh-NYE-uh LAT-son

00



Last Gm: 15 pts, 4 assts, 6 stls at USF
Efficient scorer and distributor, growing defensively ... SEC top-15 in ppg, FG%, apg, FT%, A:TO ... 66 career 20-point games (4 SC) ... 3x All-American.

2025-26	Career*	Career Highs
PPG 17.6	22.0	Pt: 40 at Va. Tech, 1/2/25*
APG 3.8	3.9	Rb: 11 vs. TTU, 11/29/24**
FG% .514	.453	Ast: 12 at Va., 2/6/25*
3FG% .438	.336	Stl: 8 vs. Presby, 12/15/22*
FT% .825	.842	3FG: 5 vs. NCCU, 12/7/25**

MADDY McDANIEL

5-9 • So. • G • Upper Marlboro, Md.

1



Last Gm: 7 pts, 2 rebs, 5 assts, 3 stls at USF
Court vision, can get to the rim, makes good decisions ... 15.7 mpg, 18.0 A:TO ... last 3 games – 8.0 ppg, 3.0 rpg, 3.3 apg, 22.6 mpg.

2025-26	Career	Career Highs
PPG 4.3	3.4	Pt: 10 vs Purdue, 11/30/24
RPG 1.5	2.0	Rb: 4 vs. PSU, 12/14/25*
APG 2.3	1.8	Ast: 6 vs. ECU, 11/17/24
FG% .375	.467	Stl: 4 vs. ECU, 11/17/24
FT% .684	.686	3FG: 2 vs PSU, 12/14/25*

TESSA JOHNSON

6-0 • Jr. • G • Albertville, MN

5



Last Gm: 16 pts, 4 reb, 2 assts, 2 3FGs at USF
Multi-level scoring threat, strong ... SEC top-10 in 3FG%, 3s/gm (2.2) ... vs ranked – 15.0 ppg 3.6 apg... 2024 NCAA Final Four All-Tournament Team.

2025-26	Career	Career Highs
PPG 13.5	8.4	Pt: 22 at Miss. St., 1/5/25
APG 2.6	1.5	Rb: 7 at UofL, 12/4/25*
FG% .518	.475	A: 6 vs. TN Tech, 3/21/25*
3FG% .462	.438	Stl: 3 vs. Ala., 2/22/24*
FT% .818	.840	3FG: 4 at UofL, 12/4/25*

JOYCE EDWARDS

6-3 • So. • F • Camden, SC

8



Last Gm: 34 pts, 5 rebs, 2 blks at USF
Size, speed, skill and feel for game ... NCAA top-15 in ppg, FG% ... 7 20-pt gms this season ... last 3 gms – 29.3 ppg, .783 FG% ... 2025 All-Amer, 1st-tn All-SEC.

2025-26	Career	Career Highs
PPG 21.4	14.7	Pt: 34 at USF, 12/18/25
RPG 5.8	5.2	Rb: 12 at Vandy, 2/23/25
BPG 1.8	0.8	Blk: 4 vs. PSU, 12/14/25
FG% .616	.557	Ast: 6 vs. NCCU, 12/7/25*
FT% .632	.729	Stl: 6 vs. PSU, 12/14/25

MADINA OKOT

6-6 • Sr. • C • Mumias, Kenya

mah-DEE-nuh oh-CAUGHT

11



Last Gm: 12 pts, 10 rebs, 6-7 FGs at USF
Size and strength inside, shooting range ... NCAA top 10 in double-doubles, rpg, FG% ... vs ranked – 13.7 ppg, .563 FG%, 13.0 rpg.

2025-26	Career*	Career Highs
PPG 14.4	12.1	P: 26 at UMES, 12/20/24*
RPG 11.0	9.9	R: 23 at Vandy, 2/13/25*
BPG 1.6	1.2	B: 4 vs. BGSU, 11/7/25**
FG% .625	.653	A: 3 v. Wnthrop, 11/19/25**
FT% .690	.644	S: 5 vs Ala. St., 11/13/24*

ADHEL TAC

6-5 • So. • F • Grand Prairie, TX

uh-DELL TACK

15



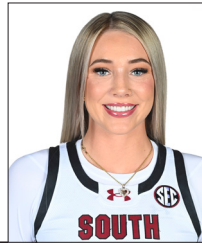
Last Gm: 5 pts, 8 rebs, 2 blks, 11 mins at USF
High motor, great teammate ... growing strength and confidence after long injury recovery to start college ... has two starts ... 4 gms of at least 5 rebs.

2025-26	Career	Career Highs
PPG 3.3	2.2	P: 11 v. Queens, 11/23/25
RPG 4.2	2.5	R: 10 v. Queens, 11/23/25
BPG 0.8	0.3	B: 2 vs. Texas, 11/27/25
FG% .571	.482	A: 2 vs. BGSU, 11/7/25
FT% .571	.595	S: 1 vs PSU, 12/14/25*

CHLOE KITTS

6-2 • Sr. • F • Oviedo, FL

21



2025-26: Out for season, October ACL surgery
Tenacious; improved physical, mental strength ... in 2025 SEC Tourn and NCAA Regional MVP, All-American, team's top rebounder.

2024-25	Career	Career Highs
PPG 10.2	8.1	Pt: 25 vs Vandy, 3/7/25
RPG 7.7	5.8	Rb: 14 vs Mich., 11/4/24*
APG 1.9	1.5	Blk: 5 vs Mizzou, 2/8/24
FG% .520	.523	Ast: 10 at Miss., 2/27/25
FT% .798	.734	Stl: 4 at Miss., 2/27/25

AYLA McDOWELL

6-1 • Fr. • G • Cypress, TX

EYE-luh

24



Last Gm: 3 pts, 3 stls, 20 mins at USF
3-level scorer, great size, athleticism ... last 3 gms – 7.7 ppg, 40.0 FG%, 42.9 3FG% ... McDonald's All-American, #15 in 2025 Class ... Brazil National Team.

2025-26	Career	Career Highs
PPG 5.0	5.0	Pt: 11 vs. BGSU, 11/7/25
APG 0.3	0.3	Rb: 4 vs. PSU, 12/14/25*
FG% .422	.422	Ast: 1 at UofL, 12/4/25*
3FG% .385	.385	Stl: 3 at USF, 12/18/25
FT% .706	.706	3FG: 2 vs. BGSU, 11/7/25

RAVEN JOHNSON

5-9 • Sr • G • Atlanta, GA

25



Last Gm: 15 pts, 6 assts, 3 stls, 4 rebs at USF
Great instincts, good decision-maker ... 15th NCAA in apg (5th SEC), 5th in A:TO (4.0 2nd SEC) ... 2 dbl-dbls ... 2024 All-SEC, 2025 SEC All-Defensive.

2025-26	Career	Career Highs
PPG 9.5	6.0	Pt: 18 v. SDSU, 11/20/23
RPG 4.5	4.1	Rb: 15 at Tenn., 2/15/24
APG 6.3	3.9	A: 17 v. Clems., 11/16/23
FG% .518	.407	Stl: 6 vs Auburn, 2/2/25
FT% .824	.667	B: 2 v. Queens, 11/23/25*

MARYAM DAUDA

6-4 • Sr. • F • Bentonville, Ark.

MARE-ee-um DOW-duh

30



Last Gm: 7 rebs, 1 asst, 1 blk at USF
Keeps defenders off balance, great footwork inside ... growing confidence ... 6 games 5+ rebounds ... 13.7 mpg ... last 3 gms – 5.7 rpg, 18.6 mpg.

2025-26	Career*	Career Highs
PPG 2.8	4.9	Pt: 22 at Tulsa, 3/21/24*
RPG 4.5	3.7	Rb: 13 v. Miss St, 1/11/24*
FG% .379	.425	Blk: 10 at Ala., 1/14/24*
3FG% .000	.279	Ast: 5 at Ala., 1/14/24
FT% .563	.733	Stl: 4 v. UGa, 1/7/24*

AGOT MAKEER

6-0 • Fr. • G • Thunder Bay, Ontario

uh-GOT muh-KEER

44



Last Gm: 2 rebs, 3 mins vs. Texas
Size, speed, versatility ... USWBA Freshman of the Year watch list ... McDonald's All-American, No 6 in 2025 Class ... Team Canada U17, U19.

2025-26	Career	Career Highs
PPG 5.9	5.9	P: 12 v. Wnthrop, 11/19/25*
APG 1.1	1.1	R: 7 v. Wnthrop, 11/19/25
FG% .439	.439	A: 4 v. Wnthrop, 11/19/25
3FG% .250	.250	S: 2 v. Wnthrop, 11/19/25
FT% .778	.778	B: 3 vs. GCU, 11/3/25

DAWN STALEY

At SC: 486-111 (18th season)

Career: 658-191 (26th season)

HC



- 3 National Championships, including 10th undefeated title season in NCAA history (2024)
- 7 Final Fours in last 10 NCAA Tournaments
- 9 SEC Regular-Season Championships
- 9 SEC Tournament Championships
- 9th in winning percentage (.775) among active NCAA Div. I coaches, 10th all-time
- 12 WNBA Draft picks since 2020 – more than any other program in that time

* indicates includes games at previous NCAA Div. I institution

* indicates has happened multiple times, most recent listed

QUICK FACTS

The University

Location: Columbia, S.C.

Founded: 1801

Enrollment: 40,000

Colors: Garnet (PMS 202C) and Black

Nickname: Gamecocks

Conference: Southeastern

University President: Michael Amiridis

Athletics Director: Jeremiah Donati

Facility: Colonial Life Arena (18,000)

Coaching Staff

Head Coach: Dawn Staley

Alma Mater: Virginia, 1992

Overall Record: 658-191 (26th season)

School Record: 486-111 (18th season)

Assoc. Head Coach, Alma Mater:

Lisa Boyer, Ithaca, 1979 (18th season)

Assistant Coaches, Alma Mater:

Jollette Law, Iowa, 1990 (9th season)

Wendale Farrow, E. Michigan, 2009 (1st season)

Mary Wooley, USC Aiken, 2002 (3rd season)

Khadijah Sessions, South Carolina, 2016 (3rd season)

Team Information

2024-25 Record: 35-4

Home: 16-1 Away: 8-2 Neutral: 11-1

SEC Record (Finish): 15-1 (T-1st)

Home: 8-0 Away: 7-1

Letterwinners Returning/Lost: 2/3

Starters Returning/Lost: 7/6

Program History

First Year of Women's Basketball: 1974-75

All-Time Record: 1,065-540 (52nd season)

All-Time SEC Record: 278-213 (35th season)

NCAA Appearances (Last): 21 (2025)

NCAA Tournament Record: 55-18

2025 NCAA Result: Runner-Up

WNIT Appearances (Last): 5 (2011)

WNIT Record: 6-4

Media Relations

Women's Basketball Contact: Diana Koval

Office: 803.777.7977

Cell: 314.369.6050

Email: dkoval@mailbox.sc.edu

Women's Basketball on Social Media:

Twitter: @GamecockWBB

Instagram: @GamecockWBB

Facebook: @GamecockWBB

TikTok: @GamecockWBB

Head Coach on Social Media

Twitter: @DawnStaley

Instagram: @Staley05

Athletics Department on the Web

Website: GamecocksOnline.com

Twitter: @GamecocksOnline

Instagram: @GamecocksOnline

Facebook: Facebook.com/GamecocksOnline

YouTube: YouTube.com/GamecocksOnline

CURRENT STREAKS

	Total	Home	Road	Neut.
Overall	W4	W11	W4	L1
SEC	W6	W48	W3	—
Non-Conference	W11	W10	W2	W2
Ranked Teams	W1	W1	W1	L1

Perennial Power

Under Dawn Staley, South Carolina women's basketball had been a perennial national power since winning its first SEC title in 2013-14. A few highlights from that stretch.

- 5 straight NCAA Final Four appearances (2021-2025) is the longest active streak and the second-longest streak in tournament history.
- 3 National Championships are third most by a single program in tournament history.
- 10th undefeated National Championship season in NCAA history (2023-24)
- 84 AP No. 1 rankings are third-most by a program in the poll's history.
- 124 straight AP Top-10 rankings is the longest active streak – more than three times the next program
- 11 Gamecocks have earned All-America status at least once in their careers

The FGCU Series

The Gamecocks are 1-0 all-time against FGCU with the lone meeting coming in the 2012 Paradise Jam in St. Thomas, USVI. South Carolina took the 65-46 victory en route to winning their division at the tournament.

Road Ready

The Gamecocks are 320-263 (.549) all-time in road games (some records prior to 1976-77 did not include location of games), including a 146-48 mark (.753) under head coach Dawn Staley, giving her the best road winning percentage in program history.

Ranked Readings

Against ranked teams, South Carolina is 134-72 (.650) in the Dawn Staley era (beginning 2008-09), and even that mark is skewed by the early seasons of her tenure. Since the start of the 2014-15 campaign, the Gamecocks are 119-33 (.783) against ranked teams, including a 49-6 (.891) mark since the start of the 2021-22 season.

This season, South Carolina is 2-1 against ranked opponents with all three games happening outside of Columbia – W 69-52 vs. #8/10 Southern Cal (Nov. 15), L 64-66 vs. #4/4 Texas (Nov. 27), W 79-77 at #22/21 Louisville (Dec. 4).

Schedule Sketch

South Carolina's schedule continues to challenge and prepare the team for the postseason. This year's slate

2025-26 AWARDS

Maryam Dauda

Cheryl Miller Preseason Top 20 Watch List

Joyce Edwards

SEC Player of the Week (11/11-17)

Preseason USA Today Second-Team All-America

USBWA Ann Meyers Drysdale Award Watch List

Wooden Award Preseason Top 50 Watchlist

Naismith Trophy Watch List (preseason)

Wade Trophy Watch List (preseason)

Preseason All-SEC First Team (media, coaches)

Katrina McClain Preseason Top 20 Watch List

Raven Johnson

USBWA Ann Meyers Drysdale Award Watch List

Wooden Award Preseason Top 50 Watchlist

Naismith Trophy Watch List (preseason)

Nancy Lieberman Preseason Top 20 Watch List

Chloe Kitts

Wooden Award Preseason Top 50 Watchlist

Ta'Niya Latson

USBWA Player of the Week (11/17-23)

Preseason AP All-America

Preseason USA Today First-Team All-America

Wooden Award Preseason Top 50 Watchlist

USBWA Ann Meyers Drysdale Award Watch List

Naismith Trophy Watch List (preseason)

Wade Trophy Watch List (preseason)

Preseason All-SEC First Team (coaches)

Preseason All-SEC Second Team (media)

Ann Meyers Drysdale Preseason Top 20 Watch List

Agot Makeer

Wooden Award Preseason Top 50 Watchlist

Tamika Catchings Watch List

Madina Okot

Lisa Leslie Preseason Top 20 Watch List

USBWA Player of the Week (12/1-7)

SEC Player of the Week (12/2-8)

features 12 games against teams ranked in the current top 25 – five home, five road and two neutral sites. Four of the 10 games are against teams in the top 10.

The non-conference schedule is highlighted by three

GAMECOCKS IN THE RANKINGS (thru games of 12/18)

Team	SEC	NCAA	Actual	Joyce Edwards	SEC	NCAA	Actual
Scoring Offense	4	8	91.6	Points per game	3	12	21.4
Scoring Defense	6	19	53.8	FG percentage	3	11	.616
Scoring Margin	3	6	+37.8	Blocks per game	6	45	1.8
Field Goal Percentage	2	2	.536				
Field Goal %age Def.	3	6	.317				
3-Point FG %age	3	12	.385	Raven Johnson	SEC	NCAA	Actual
3-Point FG %age Def.	1	24	.252	Assists per game	5	15	6.3
3-Point FG Made/Gm.	12	219	5.8	Assist-to-turnover ratio	2	5	4.0
Free Throw Percentage	13	161	.705				
Free Throws Made/Gm.	6	35	15.5	Tessa Johnson	SEC	NCAA	Actual
Rebounding Average	6	17	44.5	3-Point FG percentage	3	25	.462
Rebounding Margin	5	13	+12.3	3-Point FGs made/game	9	140	2.2
Offensive Rebound Avg.	12	97	13.5				
Assists Per Game	4	12	19.7	Ta'Niya Latson	SEC	NCAA	Actual
Steals Per Game	11	108	9.6	Points per game	10	64	17.6
Turnover Margin	7	29	+6.8	FT percentage	9	116	.825
Turnovers Per Game	4	13	11.7				
Assist-to-Turnover Ratio	3	9	1.7	Madina Okot	SEC	NCAA	Actual
Blocked Shots Per Game	2	4	7.1	Rebounds per game	1	8	11.0
Bench Points Per Game	15	255	17.0	FG percentage	2	8	.625
Home Attendance Avg.	1	1	15,880	Blocks per game	8	58	1.6
				Off. rebs. per game	6	—	3.6
				Double-doubles	2	2	8

ranked matchups – vs. #8/10 Southern Cal (W, 69-52), vs. #4/4 Texas (L, 64-66) and at #22/21 Louisville (W, 79-77).

In the NET rankings, South Carolina is ranked sixth and has 12 Quad 1 games on the schedule, including three non-conference matchups. The Gamecocks are second in the SEC in the NET rankings but have the best average opponent NET ranking.

Ranking Review

South Carolina is currently ranked No. 3 in both the AP Poll and the USA Today/WBCA Coaches' Poll.

It marks the Gamecocks' 124th consecutive entry in the AP top 10, beginning with the 2019-20 preseason poll. It is the longest active streak and the eighth longest in the history of that poll (7th is 137, Baylor). Their 255 straight appearances in the AP Poll, dating back to Dec. 10, 2012, mark the second-longest active streak in the nation and is the tied for the sixth longest all-time (5th, Duke/Stanford, 312).

In the USA Today/WBCA Coaches' Poll, South Carolina has been in the top 10 since claiming the No. 10 spot in the 2019-20 preseason poll.

Staley's Standard

In her 26th season as a head coach, Dawn Staley has a .775 (658-191) winning percentage, which ranks ninth in the nation among active head coaches and 10th all-time. With three national championships, she ranks fourth among head coaches all-time in NCAA titles.

Staley is one of just two women's basketball coaches to lead their teams to multiple 40-game win streaks in NCAA history with the Gamecocks' program-record 43-game streak (2023-24) ranking seventh longest in NCAA history. She is one of just 11 men's or women's basketball coaches to win at least three NCAA National Championships and the first Black head coach to win multiple titles. She is one of seven coaches to lead a team to at least four NCAA National Championship games.

Now in her 18th season with the Gamecocks, Staley is the program's all-time winningest coach (486) with a program-record 14 postseason appearances. She accounts for all seven of the Gamecocks' Final Four

appearances and the only NCAA National Championships in program history. Her leadership on the court and in the community resulted in the City of Columbia commissioning a statue of Staley, which stands a short distance from the Gamecocks' home Colonial Life Arena.

Staley's nine SEC regular-season championships trail only Pat Summitt's 16 in league history, and her seven SEC Coach of the Year awards trail Summitt's league record by just one. Staley's 214 SEC regular-season wins are the most among active league coaches and third all-time – behind just Summitt (Tennessee, 306) and Andy Landers (Georgia, 273). She was the second-fastest to the 200-win mark in league history with her 255 games trailing Summitt's mark of 229. Staley's .793 SEC winning percentage (214-56) is second only to Summitt (.874) among coaches in the league at least five seasons. She owns the SEC record for consecutive regular-season conference victories with a 57-game streak that began in the 2021-22 season and ended in 2024-25.

Efficiency Report

A focus for South Carolina on both sides of the ball is efficiency – creating its own and disrupting its opponents'. This season, they are among the best in the nation in both categories – ranking second in the NCAA in field goal percentage (.536) and sixth in field goal percentage defense (.317).

Individually, four Gamecock starters are among the SEC's top 15 in field goal percentage – Madina Okot (2nd, .625), Joyce Edwards (3rd, .616), Tessa Johnson (11th, .518) and Ta'Niya Latson (12th, .514). In all, five Gamecocks are shooting at least 50.0 percent from the field.

From 3-point range, the Gamecocks are 12th in the nation with a .385 shooting percentage. Tessa Johnson is among the nation's most accurate outside shooters with her 46.2 percent accuracy ranking 25th in the nation (3rd in SEC). Her 2.2 made 3s per game are ninth in the SEC. She is the only player ranked in the SEC's top 15 in both overall and 3-point field goal percentage.

Paint Production

South Carolina has long controlled the paint, and this season is no different, even with a guard-dominated roster.

With 57.3 percent of their points coming in the paint, the Gamecocks are second in the nation with 52.5 paint points per game and are out-scoring opponents in that space by an average of 30.0 points, including a +10.7 edge against ranked opponents. They tied the program record for paint points in a game with 74 at USF (Dec. 18).

The paint production has been spread across the roster with guards accounting for 21.6 paint points per game – 41.3 percent of the total scoring in that space.

The Gamecocks are shooting 64.8 percent in the paint compared to opponents' 40.7 percent accuracy.

Glass Shattering

South Carolina is 13th in the nation in rebounding margin (+12.3) and 17th in rebounding average (44.5). They have corralled 41.8 percent of their missed shots for an offensive rebounding percentage that ranks 18th.

Senior Madina Okot is eighth in the nation with an SEC-best 11.0 rebounds per game, and her 3.6 offensive rebounds per game are sixth in the SEC. She has been in double figures in the rebounds in nine games.

Sophomore Joyce Edwards is next in line at 5.8 rebounds per game, and senior guard Raven Johnson's 4.5 per game, including a season-high 11 against #8/10 Southern Cal (Nov. 15), lead the guards. She has led the team in rebounding twice this season and 12 times in her career.

NATIONAL RANKINGS

Associated Press Poll (Dec. 15)

1. UConn	10-0
2. Texas	12-0
3. South Carolina	10-1
4. UCLA	9-1
5. LSU	11-0
6. Michigan	9-1
7. Maryland	12-0
8. Oklahoma	11-1
9. TCU	11-0
10. Iowa State	12-0
11. Iowa	10-1
12. Kentucky	11-1
13. Vanderbilt	9-0
14. Ole Miss	10-1
15. Baylor	10-2
16. Louisville	10-3
17. Tennessee	7-2
18. North Carolina	9-3
19. Southern Cal	7-3
20. Notre Dame	8-2
21. Ohio State	9-1
22. Washington	9-1
23. Nebraska	11-0
24. Michigan State	9-1
25. Princeton	10-1

USA Today/WBCA Coaches' Poll (Dec. 16)

1. UConn	10-0
2. Texas	12-0
3. South Carolina	10-1
4. UCLA	9-1
5. LSU	11-0
6. Maryland	12-0
7. TCU	11-0
8. Oklahoma	11-1
9. Michigan	9-1
10. Iowa State	12-0
11. Vanderbilt	9-0
12. Iowa	10-1
13. Kentucky	11-1
14. Ole Miss	10-1
15. Baylor	10-2
16. North Carolina	9-3
17. Louisville	10-3
18. Tennessee	7-2
19. Southern Cal	7-3
20. Notre Dame	8-2
21. Ohio State	9-1
22. Washington	9-1
23. Michigan State	9-1
24. Alabama	11-0
23. Nebraska	11-0

Block Party

The Gamecocks have been a premier shot blocking program since their first national championship in 2017. They ranked in the top 15 in blocks per game that season and have only climbed higher in the eight subsequent seasons, including four years leading the nation in the stat and twice coming in second. Beyond the number of blocks, their block percentage has led the nation three seasons.

This season, South Carolina is fourth in the nation with 7.1 blocks per game, including 4.3 against ranked opponents. The Gamecocks have blocked 16.6 percent

THE STALEY ERA

Wins

30-Win Seasons	8
25-Win Seasons	13
20-Win Seasons	14
Winning Seasons	15

National Rankings

Weeks in the AP Top 25	260
Weeks in the AP Top 10	215
Weeks in the AP Top 3	140
Weeks at AP No. 1	84

Postseason

NCAA Tournament Appearances	13
NCAA Sweet 16s	12
NCAA Final Fours	7
National Championships	3

In the SEC

Regular-Season Championships	9
Regular-Season Top 3 Finishes	13
Tournament Championships	9

GAMECOCKS IN 2025-26 NATIONAL POLLS

Poll	Pre	11/10	11/17	11/24	12/1	12/8	12/15	12/22	12/29	1/5	1/12	1/19	1/26	2/2	2/9	2/16	2/23	3/2	3/9	3/16
Associated Press	2	2	2	2	3	3	3													
Coaches	2	2	2	2	3	3	3													

of opponents' 2-point attempts, which ranks fourth in the nation, according to Her Hoop Stats.

Joyce Edwards tops the individual list with 1.8 blocks per game to rank sixth in the SEC. Madina Okot is just behind at 1.6 per game (8th SEC). Gamecock guards have added 2.4 blocks per game to the team's average.

Quarter Breakdown

South Carolina has been started and finished strong this season with a +10.2 scoring margin in the first quarter and a +10.5 margin in the fourth. The offense has been most efficient in the two periods as well, shooting 56.4 percent in each. Opponents have been least efficient in the fourth quarter, shooting just 24.6 percent in the final 10 minutes.

Here's a more detailed look at the quarter-by-quarter production for the Gamecocks this season:

Qtr.	SC-Opp Avg. Pts	Avg. Pts. Margin	SC-Opp Avg. Reb	Avg. Reb. Margin
1	24.4-14.3	+10.2	10.0-7.8	+2.2
2	22.2-13.5	+8.7	12.8-8.4	+4.4
3	23.2-14.7	+8.5	11.0-7.3	+3.7
4	21.8-11.3	+10.5	10.7-8.6	+2.1

Individually, four Gamecocks have scored double digits in a single quarter a combined 10 times – Joyce Edwards (5), Tessa Johnson (2), Ta’Niya Latson (2), Madina Okot (1). The top single-quarter individual scoring this season is 13 points by Latson in the third and fourth quarters against NC Central (Dec. 4).

First Watch

Gamecocks have dominated the many national award watch lists that are announced each preseason.

South Carolina is one of three schools with a player on each of the Naismith Hall of Fame Women’s Starting Five

watch lists. And one of two programs with five entire on the Wooden Award Top 50 Preseason Watchlist.

Three Gamecocks – Joyce Edwards, Raven Johnson, Ta’Niya Latson – are on the watch lists for the Naismith Trophy, the Wooden Award and the USBWA’s Ann Meyers Drysdale Player of the Year award. South Carolina is one of two schools with three players on all three lists.

Edwards and Latson are also among the 20 players on the Wade Trophy Watch List, which is the WBCA’s national player of the year award.

Latson drew preseason All-America honors from both the Associated Press and USA Today. Edward earned a spot on the USA Today Preseason All-America Second Team.

The pair was also ranked on ESPN’s list of the top 25 players in the NCAA this season. Latson came in at #7 with Edwards close behind at #11, making South Carolina one of two programs with multiple players in the first 11 places.

Agot Makeer is on the list for the Tamika Catchings Award, the USBWA’s National Freshman of the Year. and on the Wooden Award watch list, which also recognized senior Chloe Kitts despite her season-ending injury.

That’s So Raven

Senior point guard Raven Johnson has been at the tip of the spear for the Gamecocks on both sides of the ball and has led the team to nothing but winning.

In Johnson’s fourth full season, South Carolina is 118-6 with her in the lineup (missed one game each in the 2022-23 and 2023-24 seasons), including a 36-4 mark against ranked teams. That stretch features three trips to the Final Four, including a National Championship (2024) and runner-up finish (2025), three SEC Regular-Season titles and three SEC Tournament championships in the three full seasons of her career.

DOUBLE-DOUBLES

Joyce Edwards (2)		
11/15	vs. #8/10 Southern Cal	17 pts/10 rebs
12/7	NC Central	25 pts/10 rebs

Raven Johnson (2)		
11/7	Bowling Green	11 pts/11 assts
11/15	vs. #8/10 Southern Cal	14 pts/11 rebs

Madina Okot (8)		
11/7	Bowling Green	13 pts/11 rebs
11/11	Clemson	12 pts/12 rebs
11/19	Winthrop	23 pts/11 rebs
11/23	Queens	14 pts/12 rebs
11/26	vs. Duke	23 pts/13 rebs
11/27	vs. #4/4 Texas	12 pts/11 rebs
12/4	at #22/21 Louisville	23 pts/13 rebs
12/18	at USF	12 pts/10 rebs

Adhel Tac (1)		
11/23	Queens	11 pts/10 rebs

Johnson is seventh in program history in career assists (486 – 6th is Lisa Diaz, 498) and fifth in the category for SEC play (166). She owns three of the top seven single-season assist-to-turnover ratios in program history, including a program-record 3.33 mark in SEC play in 2024-25. Her current career 2.88 A:TO (486:169) is well ahead of the current program record of 2.55 by WNBA veteran Tyasha Harris (2017-20).

The powerful guard makes her presence felt on the glass as well, averaging 4.1 rebounds for her career, and she has been the team’s top rebounder in 12 games, including two games this season (Grand Canyon, Penn State).

GAMES LED TEAM IN...

Scoring	2025-26	Career	Record
Joyce Edwards	7	23	20-3
Ta’Niya Latson	4	72*	52-20
Madina Okot	2	10*	9-1*
Tessa Johnson	0	5	5-0
Maryam Dauda	0	5*	1-4

Rebounding	2025-26	Career	Record
Madina Okot	9	33*	23-10*
Raven Johnson	2	12	11-1
Joyce Edwards	1	7	6-1
Ta’Niya Latson	0	6*	5-1*
Maryam Dauda	0	5*	2-3

Assists	2025-26	Career	Record
Raven Johnson	8	61	59-2
Ta’Niya Latson	2	51*	34-17*
Tessa Johnson	2	7	7-0
Joyce Edwards	2	3	3-0
Maddy McDaniel	0	5	4-1

* indicates includes games at previous NCAA Div. I program

MISCELLANEOUS STATS

Triple-Double	2025-26	Career	Record
Chloe Kitts	0	1	1-0
Ta’Niya Latson	0	1*	1-0*

Double-Doubles	2025-26	Career	Record
Madina Okot	8	20*	17-3*
Joyce Edwards	2	6	6-0
Raven Johnson	2	3	3-0
Adhel Tac	1	1	1-0
Ta’Niya Latson	0	5*	5-0*
Maryam Dauda	0	2*	1-1

40+ Points	2025-26	Career	Record
Ta’Niya Latson	0	1*	1-0*

30+ Points	2025-26	Career	Record
Ta’Niya Latson	1	21*	18-3*
Joyce Edwards	1	1	1-0

20+ Points	2025-26	Career	Record
Joyce Edwards	7	12	12-0
Ta’Niya Latson	4	66*	51-15*
Madina Okot	3	5*	5-0*
Tessa Johnson	1	2	2-0
Maryam Dauda	0	1*	0-1

10+ Points	2025-26	Career	Record
Joyce Edwards	12	39	36-3
Ta’Niya Latson	11	97*	70-27*
Madina Okot	10	32*	27-5*
Tessa Johnson	9	34	33-1
Raven Johnson	8	30	29-1
Agot Makeer	2	2	2-0
Ayla McDowell	2	2	2-0
Adhel Tac	1	1	1-0
Maryam Dauda	0	22*	12-10
Maddy McDaniel	0	1	1-0

20+ Rebounds	2025-26	Career	Record
Madina Okot	0	1*	1-0*

10+ Rebounds	2025-26	Career	Record
Madina Okot	9	26*	20-6*
Joyce Edwards	2	6	6-0
Raven Johnson	1	4	4-0
Adhel Tac	1	1	1-0
Maryam Dauda	0	5*	4-1
Ta’Niya Latson	0	3*	3-0*

10+ Assists	2025-26	Career	Record
Raven Johnson	2	3	3-0
Ta’Niya Latson	0	4*	4-0*

5+ Assists	2025-26	Career	Record
Raven Johnson	8	45	44-1
Ta’Niya Latson	3	38*	30-8*
Joyce Edwards	3	4	4-0
Tessa Johnson	1	6	6-0
Maddy McDaniel	1	3	3-0

5+ Blocks	2025-26	Career	Record
Maryam Dauda	0	1*	1-0

5+ Steals	2025-26	Career	Record
Raven Johnson	1	7	7-0
Ta’Niya Latson	1	5	5-0
Joyce Edwards	1	1	1-0

* indicates includes games at previous NCAA Div. I program

This season, Johnson is 15th in the nation and fifth in the SEC in assists per game (6.3), including a pair of double-digit assist games. She is fifth in the nation and second in the SEC with a 4.0 assist-to-turnover ratio. Her stat stuffing includes 9.5 points, 4.5 rebounds and 1.9 steals per game. She is shooting 51.8 percent from the field, including 41.4 percent from 3-point range – both career-best numbers. Against ranked opponents, her numbers rise to 10.7 points per game on 52.0 percent shooting, 60.0 percent from 3-point range, and 5.0 rebounds per game.

Johnson has a pair of double-doubles this season in two different ways – 11 points, 11 assists vs. Bowling Green; 14 points, 11 rebounds vs. #8/10 Southern Cal.

TEAM SPECIALTY STATS

		Pts. in Paint	Pts. Off TOs	2nd Chance Pts	Fast Break Pts
11/3	GCU	40-18	22-10	14-15	32-2
11/7	BGSU	66-18	21-13	20-4	37-2
11/11	Clem.	36-18	11-13	16-2	7-3
11/15	vs SoCal	44-28	16-9	15-7	11-9
11/19	Winthrop	70-20	26-8	27-17	33-7
11/23	Queens	66-12	22-12	11-13	56-13
11/26	vs. Duke	58-28	18-13	14-6	24-8
11/27	vs. TX	38-28	18-18	8-12	7-8
12/4	at UL	36-30	11-13	6-10	0-6
12/7	NCCU	42-18	42-9	20-2	38-12
12/14	PSU	60-24	33-5	17-21	41-9
12/18	at USF	74-28	38-5	11-2	34-5
12/20	at FGCU				
12/28	Prov.				
1/1	Ala.				
1/4	at FL				
1/8	at Ark.				
1/11	GA				
1/15	TX				
1/18	at CSU				
1/22	at OK				
1/25	Vandy				
1/29	at Aub.				
2/2	at TAM				
2/5	M State				
2/8	TN				
2/14	at LSU				
2/19	at AL				
2/22	OM				
2/26	MO				
3/1	at KY				
Season Avg.		52.5-22.5	23.2-10.7	14.9-9.3	26.7-7.0
SEC Avg.					

Let Us Re-Joyce

Sophomore forward Joyce Edwards announced her presence on the college stage last season as the Gamecocks' top scorer (12.7 ppg) with a team-high 16 games leading the team in points and five 20-point outings.

The production made her just the third freshman in program history to earn First-Team All-SEC honors, and she was an All-America honorable mention selection. This season, she is on the watch lists for every national player of the year award and the Katrina McClain Power Forward of the Year list as well.

Edwards is living up to the predictions as her team-high 21.4 points per game rank third in the SEC (12th in the

STARTERS VS. BENCH

		SC Starters	Opp. Starters	SC Bench	Opp. Bench
11/3	GCU	75	34	19	20
11/7	BGSU	79	25	35	22
11/11	Clem.	57	28	8	9
11/15	vs SoCal	63	38	6	14
11/19	Winthrop	81	48	25	8
11/23	Queens	88	31	33	18
11/26	vs. Duke	72	44	11	22
11/27	vs. TX	62	49	2	17
12/4	at UL	75	43	4	34
12/7	NCCU	76	34	30	8
12/14	PSU	79	50	16	5
12/18	at USF	88	19	15	25
12/20	at FGCU				
12/28	Prov.				
1/1	Ala.				
1/4	at FL				
1/8	at Ark.				
1/11	GA				
1/15	TX				
1/18	at CSU				
1/22	at OK				
1/25	Vandy				
1/29	at Aub.				
2/2	at TAM				
2/5	M State				
2/8	TN				
2/14	at LSU				
2/19	at AL				
2/22	OM				
2/26	MO				
3/1	at KY				
Season Avg.		74.6	36.9	17.0	16.8
SEC Avg.					

nation), including a team-best seven 20-point outings. Her scoring has come on 61.6 percent field goal shooting, which is third in the league and 11th in the nation. She has a pair of games shooting over 90.0 percent, including a 14-of-15 (.933) outing at USF (Dec. 18), which tied for the second-highest single-game percentage in program history.

She is stuffing the box score beyond scoring, averaging 2.9 assists, including three outings of at least five, and upping her rebounding to 5.8 per game.

Edwards was named SEC Player of the Week (11/11-17) in the season's second week after leading the Gamecocks to a pair of wins, including her double-double in a win over #8/10 Southern Cal (Nov. 15).

Edwards' success this season comes after a summer of representing the United States in both 3x3 and 5-on-5 competitions. After claiming a title at the FIBA 3x3 Nations League Americas Conference 2 event, she went on to average 9.9 points at the FIBA AmeriCup to rank among the top 15 scorers in the tournament and help the Americans to a gold medal.

It's T-Time

Junior guard Tessa Johnson is shaking off her "Tournament Tessa" moniker to bring "Trusted Tessa" out every time she steps on the court and on both sides of the ball while adapting to a starting role this season.

After an offseason focused on her physical conditioning and how nutrition multiplies that effort, Johnson is logging a team-high 30.9 minutes per game and her scoring and efficiency are at career-best levels.

Johnson's 13.5 points per game are fourth on the team, and she is tied for the team lead with 15.0 points per game against ranked opponents. Her .462 3-point percentage, which is 25th in the nation, ranks third in the league as part of her overall 51.8 percent accuracy (11th in SEC). She is the only player ranked in the SEC's top 15 in both overall and 3-point percentage. Her 2.2 made 3s per game are ninth in the SEC. She is also handing out a career-best 2.6 assists per game.

Johnson have built steadily year over year, beginning with a freshman year that saw her shine in the most crucial moments of the team's undefeated run to the 2024 National Championship. She averaged 14.0 points on 58.8 percent shooting in the final weekend of the season, including a team-best 19 points in the title game to earn a spot on the NCAA Final Four All-Tournament Team.

Changes in Lat-itude

The top scorer in the nation last season, senior guard Ta'Niya Latson decided to join South Carolina for her final college season because she knew head coach Dawn Staley and the Gamecocks had what she needed to challenge herself to expand areas of her game she was not able to hone at Florida State. Without the pressure of being the sole focal point on offense, Latson's efficiency is skyrocketing and her defensive skills are steadily expanding.

Named an AP Preseason All-American and to the watch lists of every national player of the year award, Latson improved her strength in the offseason, which has helped her make strides defensively, and she is seeing the court better on offense.

Latson is 10th in the SEC in scoring at 17.6 points per game and 12th in field goal percentage, hitting 51.4 percent, including 43.8 percent from 3-point range. Her 3.8 assists per game (13th in SEC) have led to another 8.4 points per game, meaning she has her hands on 28.4 percent of the Gamecocks' total offense (26.0 ppg).

M.O.-mentum

After just starting the sport at 17 years old, 6-foot-6 center Madina Okot is becoming one of the most dominant centers in the sport. Last season at Mississippi State, she was the SEC's top percentage shooter (.649) and fourth in rebounding. With a year of eligibility remaining,

2025-26 SCORING DIFFERENTIALS

All Games

Largest lead in a win	by 74 (119-45), 4th-1:12, vs. Queens, 11/23
Largest deficit overcome to win	by 5 (68-73), 4th-4:23, at #22/21 Louisville, 12/4
Largest deficit in a loss	by 8 (19-27), 2nd-6:57, vs. #4/4 Texas, 11/27
Best Scoring Run	30 points, 3rd-2:13, vs. Queens, 12/7
Best Scoring Run Against	9 points, 3rd-5:18, vs. Duke, 11/26
Most Lead Changes	13 at #22/21 Louisville, 12/4
Most Times Tied	8 vs. #4/4 Texas, 11/27
Most minutes trailed	27:18 vs. #4/4 Texas, 11/27

vs. Ranked Opponents

Largest lead in a win	by 17 (69-52), 4th-0:30, vs. #8/10 Southern Cal, 11/15
Largest deficit overcome to win	by 5 (68-73), 4th-4:23, at #22/21 Louisville, 12/4
Largest deficit in a loss	by 8 (19-27), 2nd-6:57, vs. #4/4 Texas, 11/27
Best Scoring Run	8 points (2nd-9:19, at #22/21 Louisville, 12/4
Best Scoring Run Against	8 points, 1st-1:31, vs. #8/10 Southern Cal, 11/15
Most Lead Changes	13 at #22/21 Louisville, 12/4
Most Times Tied	8 vs. #4/4 Texas, 11/27
Most minutes trailed	27:18 vs. #4/4 Texas, 11/27

she chose to come to South Carolina with the mindset to be the next entry in the Gamecocks' legacy of dominant post players.

The quiet Okot has drawn praise from her head coach on her strength and agility and been challenged to show her dominance every time she steps on the court. After an average season opener, Okot has been rising to that challenge, and both her production and her comfort level have been growing exponentially.

Okot is second in the nation with eight double-doubles and her SEC-best 11.0 rebounds per game are eighth in the nation. Shooting 62.5 percent from the field, including four games over 70.0 percent, she is second in the SEC and eighth in the nation in that category. Her 1.6 blocks per game are eighth in the SEC, and her 3.6 offensive boards per game are sixth.

Agot Send

Freshman guard Agot Makeer was ranked sixth in the Class of 2025 and drew McDonald's All-America and honorable mention Naismith All-America honors out of Montverde Academy (FL). She opened her college career on the USWBA Tamika Catchings Freshman of the Year and the Wooden Award watch lists.

After leading Montverde to a runner-up finish at the Chipotle High School National Championships, Makeer, suited up for Canada at the FIBA U19 World Cup, helping it to a fourth-place finish with 10.3 points, including 46.2 percent 3-point shooting, and 4.9 rebounds per game.

The long, lithe Makeer is averaging 5.9 points to go along with 3.6 rebounds per game.

Ay-aye Captain

The #15 player in the 2025 Class, freshman guard Ayla McDowell is a McDonald's All-American and a three-time district MVP out of Cypress, Texas, who's international experience with Brazil's national team has helped smooth her transition to college basketball.

McDowell amassed over 2,700 career points in high school before donning a Brazil jersey at the FIBA AmeriCup and the FIBA U19 World Cup over the summer. For the U19 team, she was the top scorer with a 16.8 scoring average while averaging 4.5 rebounds and 2.7 steals.

Coaches have praised her competitive fire and her predictability on the defensive end, meaning she is trusted to make the right play. On the other end of the court, McDowell is finding her spots in the flow of the

offense, learning when to shoot and when to defer.

McDowell is scoring 5.0 points per game on 42.2 percent shooting and she is hitting 80.0 percent of her free throws.

In the last three games, McDowell's confidence has soared. She hit a clutch 3 and came up with a pair of offensive rebounds at #22/21 Louisville (Dec. 4). In the next game, she poured in 16 points, including five 3s against NC Central (Dec. 7). Over her last three outings, she has posted 7.7 points per game on 40.0 percent shooting, including 42.9 percent (6-of-14) from 3-point range.

Everybody's All-American

The Gamecocks' 11-woman roster includes eight McDonald's All-Americans – Maryam Dauda, Joyce Edwards, Raven Johnson, Tessa Johnson, Ta'Niya Latson, Agot Makeer, Maddy McDaniel and Ayla McDowell.

At South Carolina, Staley has coached 29 McDonald's All-Americans, including 22 who signed as freshmen.

What's Next

Just as the 2025-26 season began, event organizers were already releasing plans for the Gamecocks' 2026-27 season. South Carolina will be making its second appearance at all four events.

The Gamecocks will return to Paris for Oui Play 2026, facing Maryland in the season opener on Nov. 2. The return game of the Sprouts Farmers Market The Real SC game is set for Bon Secours Wellness Arena in Greenville, S.C., on Nov. 15. The Gamecocks are slated to take on UConn in the 2026 Basketball Hall of Fame Women's Showcase on Nov. 24. And the Charlotte Sports Foundation announced South Carolina's three-year commitment to the Ally Tipoff with games against North Carolina (2026), UConn (2027) and NC State (2028).

Who's Next

Head coach Dawn Staley signed a pair of top-20 players in the early signing period in forwards Kelsi Andrews and Kaeli Wynn. Both are on the Naismith Trophy Girls' High School Player of the Year watch list, released in November.

The 6-foot-3 Andrews is the #18 player in the Class of 2026 after helping lead IMG Academy to a high school national championship in 2025 with a 12-point, 13-rebound performance in the title game. She has also helped the U.S. to gold medals in the 2024 FIBA U17 World Cup and the 2023 FIBA U16 Americas Championship.

Wynn is the #17 player in the 2026 Class, standing 6-foot-2 and coming from basketball coach parents. She was a first-team all-state selection as a junior, averaging 17 points, 7.1 rebounds and 2.7 assists at Mater Dei High School, which was ranked No. 1 in the nation throughout the season.

WNBA Pipeline

Dawn Staley's status as a dream merchant is most evident by the steady stream of Gamecocks being drafted into and enjoying lengthy careers in the WNBA. Since her first Gamecock was drafted in 2015, she has seen 18 have their name called on draft night – the second-most by a program in that time.

Staley's numbers have skyrocketed since 2020 with an NCAA-best 12 draft picks since then, including a best-in-the-nation six first-round selections in that time.

In proof Staley sends players to the league ready, six Gamecocks have earned All-Rookie Team honors, including three WNBA Rookies of the Year – Allisha Gray (2017), Aja Wilson (2018), Aliyah Boston (2023).

Great Gamecock Fans

South Carolina fans have led the nation in average attendance for the last 11 seasons, although the NCAA does not officially recognize the COVID-limited attendance in the 2020-21 season. The Gamecocks are on track to continue that streak after selling out of season tickets for the second time in as many seasons and opening the 2025-26 slate by hosting the seven highest-attended games of the season to average 15,880 fans per game.

The Gamecocks have had at least one sellout of their 18,000-seat Colonial Life Arena for eight straight seasons (excluding COVID-limited 2020-21 season) dating back to the first ever sellout of 18,000 on Feb. 8, 2016. There have been at least five sellouts in each of the last two seasons.

South Carolina's 2024-25 attendance average of 16,437 was the second-highest in the history of the NCAA, narrowly trailing Tennessee's 1998-99 average of 16,565. That mark included a program-record seven sellouts.

SEASON THEME: BEYOND MEASURE

Each year Dawn Staley chooses a theme for the team and fans to center their season around, and it often reflects not just the state of South Carolina women's basketball, but that of the game overall.

The Gamecocks' 2025-26 season theme is Beyond Measure, which centers on the value of the whole person or group beyond the commonly measured scale. A player's value to the team is not measured solely by her statline but also by a myriad of other ways she elevates her team. Championships and awards are not valued because they yield a trophy but also because they lift up a university, a city, a state. The value of the FAMS who support the team around the country is more than the value of ticket sales, but it is in the way they form a united community that supersedes all their difference.

More broadly, Beyond Measure is a reminder that the ceiling of the team and its players – and that of women's basketball as a sport – will always shatter any limitations others may place on it.

2025-26 ROSTER

No.	Name	Pos.	Ht.	Yr.	Hometown/Last School
00	Ta'Niya Latson	G	5-8	Sr.	Miami, Fla./Florida State
1	Maddy McDaniel	G	5-9	So.	Upper Marlboro, Md./Bishop McNamara
5	Tessa Johnson	G	6-0	Jr.	Albertville, Minn./Saint Michael Albertville
8	Joyce Edwards	F	6-3	So.	Camden, S.C./Camden
11	Madina Okot	C	6-6	Sr.	Mumias, Kenya / Mississippi State
15	Adhel Tac	F	6-5	So.	Grand Prairie, Texas/South Grand Prairie
21	Chloe Kitts	F	6-2	Sr.	Oviedo, Fla./DME Academy
24	Ayla McDowell	G	6-1	Fr.	Cypress, Texas/Cypress Springs
25	Raven Johnson	G	5-9	Sr.	Atlanta, Ga./Westlake
30	Maryam Dauda	F	6-4	Sr.	Bentonville, Ark./Arkansas
44	Agot Makeer	G	6-0	Fr.	Thunder Bay, Ontario / Montverde Academy (FL)

Head Coach: Dawn Staley

Assoc. Head Coach: Lisa Boyer

Assistant Coaches: Jollette Law, Wendale Farrow, Mary Wooley, Khadijah Sessions

Sports Performance Coach: Molly Binetti; **Athletic Trainer:** Craig Oates

SOUTH CAROLINA'S RECORD WHEN ...

	vs. Ranked	SEC	All
Record	2-1		11-1
Playing a ranked opponent	2-1		2-1
Playing at home			7-0
Playing on the road	1-0		2-0
Playing at neutral site	1-1		2-1
Leading at half	2-0		11-0
Trailing at half	0-1		0-1
Tied at half			0-0
Playing an overtime game			0-0
0 players score in double figures			0-0
1 player scores in double figures			0-0
2 players score in double figures			0-0
3 players score in double figures			0-0
4 players score in double figures	2-1		7-1
5 players score in double figures			2-0
More than 5 players in double figures			2-0
Starters out-score opponent's starters	2-1		11-1
Opponent's starters score equal/more			0-0
Bench out-scores opponent's bench			5-0
Opponent's bench scores equal/more	2-1		6-1
Shooting 60% or better			4-0
Shooting between 50-59%			3-0
Shooting between 40-49%	2-1		4-1
Shooting between 30-39%			0-0
Shooting lower than 30%			0-0
Opponent shoots 50% or better			0-0
Opponent shoots between 40-49%	1-1		1-1
Opponent shoots between 30-39%	1-0		5-0
Opponent shoots between 20-29%			5-0
Opponent shoots less than 20%			0-0
Shooting better than opponent	2-1		11-1
Shooting worse than/equal to opponent			0-0
Having more FTs made than opponent	1-0		10-0
Having equal/fewer FTs made than opponent	1-1		1-1
Out-rebounding opponent	1-0		9-0
Having equal rebounds as opponent	1-0		1-0
Having fewer rebounds than opponent	0-1		1-1
Having fewer TOs than opponent	1-0		9-0
Having equal TOs as opponent	1-0		1-0
Having more TOs than opponent	0-1		1-1
Attempting more FT than 3FG	2-1		11-1
Attempting equal/fewer FT than 3FG			0-0
Making 5 or more 3FGs	1-0		8-0
Making fewer than 5 3FGs	1-1		3-1
Making no 3 FGs			0-0
Attempting 15 or more 3FGs	1-0		7-0
Attempting fewer than 15 3FGs	1-1		4-1
No South Carolina players foul out	2-0		11-0
One or more SC players foul out	0-1		0-1
No opposing players foul out	2-1		7-1
One or more opposing players foul out			4-0

	vs. Ranked	SEC	All
Assist at least half of field goals made	2-1		9-1
Assist on less than half of field goals made			2-0
Scoring more pts. in paint than opponent	2-1		11-1
Scoring equal/fewer pts. in paint than opp.			0-0
Scoring more pts. off TOs than opponent	1-0		9-0
Scoring equal/fewer pts. off TOs than opp.	1-1		2-1
Scoring more 2nd-chance pts.	1-0		8-0
Scoring equal/fewer 2nd-chance pts.	1-1		3-1
Scoring more fast break pts.	1-0		10-0
Scoring equal/fewer fast break pts.	1-1		1-1
Wearing primary white uniforms			8-0
Wearing secondary (Cocky) white uniforms	0-1		0-1
Wearing black script Carolina uniforms	2-0		3-0
Wearing garnet uniforms			0-0
Playing in November	1-1		7-1
Playing in December	1-0		4-0
Playing in January			0-0
Playing in February			0-0
Playing in March			0-0
Playing in April			0-0
Playing during the day			4-0
Playing at night	2-1		7-1
Playing on Sunday			3-0
Playing on Monday			1-0
Playing on Tuesday			1-0
Playing on Wednesday			2-0
Playing on Thursday	1-1		2-1
Playing on Friday			1-0
Playing on Saturday	1-0		1-0
Margin is less than 5 pts.	1-1		1-1
Margin is between 5-9 pts.			0-0
Margin is between 10-19 pts.	1-0		2-0
Margin is between 20-29 pts.			1-0
Margin is between 30-39 pts.			0-0
Margin is between 40-49 pts.			2-0
Margin is 50 pts. or more			5-0
Having a 20-pt. scorer	1-0		9-0
Having more than one 20-pt scorer	1-0		5-0
Having a 30-pt. scorer			2-0
Scoring 49 points or less			0-0
Scoring 50-59 points			0-0
Scoring 60-69 points	1-1		2-1
Scoring 70-79 points	1-0		1-0
Scoring 80-89 points			1-0
Scoring 90-99 points			3-0
Scoring 100 points or more			4-0
Opponent scores 39 points or less			1-0
Opponent scores 40-49 points			4-0
Opponent scores 50-59 points	1-0		4-0
Opponent scores 60-69 points	0-1		1-1
Opponent scores 70-79 points	1-0		1-0
Opponent scores 80-89 points			0-0
Opponent scores 90-99 points			0-0
Opponent scores 100 points or more			0-0

2025-26 TEAM HIGH / LOW

South Carolina Highs	South Carolina Lows	Category	Opponent Lows	Opponent Highs
121 vs. Queens, 11/23*	64 vs. Texas, 11/27	Points in Game	37, Clemson, 11/11	77, at Louisville, 12/4
63 vs. Queens (2nd), 11/23	29 vs. Texas (1st), 11/27	Points in a Half	13, Clemson (2nd), 11/11	39, at Louisville (1st), 12/4 39, vs. Duke (2nd), 11/26
33 vs. Queens (4th), 11/23	10 vs. Texas, 11/27	Points in a Quarter	2, NC Central (3rd), 12/7 2, Clemson (4th), 11/11	25, at Louisville (1st), 12/4
33 vs. Winthrop (2nd), 11/19	10 vs. Clemson (3rd), 11/11	Field Goals Made	14, Clemson, 11/11	31, at Louisville, 12/4
44 at USF, 12/18	25 vs. Texas, 11/27	Field Goal Attempts	54, NC Central, 12/7	74, Bowling Green, 11/7
74 vs. Duke, 11/26	57 vs. Grand Canyon, 11/3	FG Percentage	.229 (16-70), Queens, 11/23	.477 (31-65), at Louisville, 12/4
.662 (43-65) vs. Queens, 11/23	.408 (29-71) vs. SoCal, 11/15	3-Point FG Made	1, vs. Texas, 11/27 1, vs. Southern Cal, 11/15	9, at Louisville, 12/4 9, Queens, 11/23
11 vs. NC Central, 12/7	1 vs. Duke, 11/26	3-Point FG Attempts	6, vs. Texas, 11/27	34, Grand Canyon, 11/3
21 vs. Penn State, 12/14	7 vs. Texas, 11/27	3-Point FG Percentage	.071 (1-14), vs. SoCal, 11/15	.400 (8-20), vs. Duke, 11/26
21 vs. NC Central, 12/7		Free Throws Made	4, at USF, 12/18 4, Penn State, 12/14 4, NC Central, 12/7 4, Clemson, 11/11	15, vs. Texas, 11/27
.556 (5-9) vs. Clemson, 11/11	.100 (1-10) vs. Duke, 11/26	Free Throw Attempts	4, Clemson, 11/11	20, vs. Texas, 11/27
27 vs. NC Central, 12/7	7 vs. Southern Cal, 11/15	FT Percentage	.400 (4-10), Penn State, 12/14	.833 (5-6), Bowling Green, 11/7
27 vs. Queens, 11/23		Rebounds	24, Winthrop, 11/19	51, Penn State, 12/14
34 vs. NC Central, 12/7	10 vs. Clemson, 11/11	Assists	6, Grand Canyon, 11/3	17, vs. Duke, 11/26
34 vs. Queens, 11/23		Steals	2, Winthrop, 11/19	11, Bowling Green, 11/7
.800 (24-30) vs. BGSU, 11/7	.536 (15-28) vs. Penn State, 12/14	Blocked Shots	0, Winthrop, 11/19x	7, vs. Southern Cal, 11/15
53 vs. Bowling Green, 11/7	32 vs. Texas, 11/27	Turnovers	7, vs. Duke, 11/26	36, NC Central, 12/7
26 vs. Queens, 11/23	11 vs. Clemson, 11/11	Fouls	13, vs. Duke, 11/26 13, vs. Southern Cal, 11/15	26, Grand Canyon, 11/3
26 vs. Bowling Green, 11/7				
17 at USF, 12/18	3 vs. Clemson, 11/11			
17 vs. Penn State, 12/14				
12 vs. Queens, 11/23	1 at Louisville, 12/4			
17 vs. NC Central, 12/7	5 vs. Penn State, 12/14			
17 vs. Southern Cal, 11/15				
21 vs. Grand Canyon, 11/3	9 vs. Bowling Green, 11/7			

* indicates program record; * indicates Staley-era program record

2025-26 INDIVIDUAL SUPERLATIVES

Category	South Carolina	Opponent
Points in Game	32 by Ta'Niya Latson vs. NC Central, 12/7	22 by Kiyomi McMiller, Penn State, 12/14
Points in a Half	26 by Ta'Niya Latson vs. NC Central (2nd), 12/7	14 by Kiyomi McMiller, Penn State, 12/14
Points in a Quarter	13 by Ta'Niya Latson vs. NC Central (4th), 12/7 13 by Ta'Niya Latson vs. NC Central (3rd), 12/7	13 by Chloe Mann, Grand Canyon (2nd), 11/3
Field Goals Made	14 by Joyce Edwards at USF, 12/18	9 by Kiyomi McMiller, Penn State, 12/14
Field Goal Attempts	20 by Joyce Edwards vs. Penn State, 12/14	27 by Kiyomi McMiller, Penn State, 12/14
FG Percentage (min 5 FGM)	.933 (14-15) by Joyce Edwards at USF, 12/18	.600 (6-10) by Elif Istanbuluoglu, at Louisville, 12/4
3-Point FG Made	5 by Ta'Niya Latson vs. NC Central, 12/7 5 by Ayla McDowell vs. NC Central, 12/7	4 by Tierney Coleman, NC Central, 12/7 4 by Tajianna Roberts, at Louisville, 12/4 4 by Mya Pierfax, Winthrop, 11/19
3-Point FG Attempts	7 by Ta'Niya Latson vs. Penn State, 12/14 7 by Ayla McDowell vs. NC Central, 12/7 7 by Tessa Johnson at Louisville, 12/4 7 by Tessa Johnson vs. Winthrop, 11/19	9 by Moriah Murray, Penn State, 12/14
3FG Percentage (min 3 FGM)	.833 (5-6) by Ta'Niya Latson vs. NC Central, 12/7	.667 (4-6) by Tierney Coleman, NC Central, 12/7
Free Throws Made	8 by Maddy McDaniel vs. NC Central, 12/7	6 by Jordan Lee, vs. Texas, 11/27
Free Throw Attempts	10 by Joyce Edwards vs. NC Central, 12/7 10 by Maddy McDaniel vs. NC Central, 12/7	8 by Justice Carlton, vs. Texas, 11/27
FT Percentage (min 5 FTM)	1.00 (7-7) by Ta'Niya Latson vs. Penn State, 12/14 1.00 (7-7) by Ta'Niya Latson vs. Bowling Green, 11/7	1.000 (6-6) by Jordan Lee, vs. Texas, 11/27
Rebounds	15 by Madina Okot vs. Southern Cal, 11/15	9, 4x, most recent Gracie Merkle/Shayla Smith, Penn State, 12/14
Assists	11 by Raven Johnson vs. Bowling Green, 11/7	9 by Rori Harmon, vs. Texas, 11/27
Steals	6 by Ta'Niya Latson at USF, 12/18 6 by Joyce Edwards vs. Penn State, 12/14 6 by Raven Johnson vs. NC Central, 12/7	5 by Madison Booker, vs. Texas, 11/27 5 by Johna Donahue, Bowling Green, 11/7
Blocked Shots	4 by Joyce Edwards vs. Penn State, 12/14 4 by Madina Okot vs. Bowling Green, 11/7	3 by Kennedy Smith, vs. Southern Cal, 11/15
Turnovers	7 by Joyce Edwards vs. NC Central, 12/7	9 b Najah Lane, NC Central, 12/7

* indicates program record

* indicates Staley-era program record

THE LAST TIME...

INDIVIDUAL

Scored 50 Points

South Carolina 51, Jocelyn Penn vs. Stetson, 1/4/03
Opponent Never

Scored 40 Points

South Carolina 51, Jocelyn Penn vs. Stetson, 1/4/03
Opponent 41, Caitlyn Clark, Iowa, 3/31/23

Scored 30 Points

South Carolina 34, Joyce Edwards at USF, 12/18/25
Opponent 31, DeYona Gaston, Auburn, 2/2/25

Grabbed 20 Rebounds

South Carolina 20, Ashlyn Watkins vs. NC State, 4/5/24
Opponent 24, Teaira McCowan, at Mississippi State, 1/17/19

Grabbed 15 Rebounds

South Carolina 15, Madina Okot vs. Southern Cal, 11/15/25
Opponent 15, Sarah Strong, vs. UConn, 4/6/25

Two Players with 20 or More Points

South Carolina Ta'Niya Latson 32/Joyce Edwards 25 vs. NC Central, 12/7/25
Opponent Azzi Fudd 24/Sarah Strong 24, vs. UConn, 4/6/25

Three or More Players with 20 or More Points

South Carolina T. Latson 24/M. Okot/J. Edwards 22 vs. Winthrop, 11/19/25
Opponent B McCain 29/T Stocks 23/N Mobley 20, Florida, 1/21/01

Two Players with 10 or More Rebounds

South Carolina Madina Okot 12/Adhel Tac 10 vs. Queens, 11/23/25
Opponent Angel Reese 13/Aneesah Morrow 10, vs. LSU, 3/10/24

Three or More Players with 10 or More Rebounds

South Carolina M. Okot 15/R. Johnson 11/J. Edwards 10 vs. Southern Cal, 11/15/25
Opponent W. Rolle 12/J. Breland 10/L. Broomfield 10, vs. North Carolina, 12/19/10

Had 10 Assists

South Carolina 10, Raven Johnson vs. Winthrop, 11/19/25
Opponent 10, Paige Bueckers, UConn, 2/16/25

Had Five Steals

South Carolina 6, Ta'Niya Latson at USF, 12/18/25
Opponent 5, Madison Booker, vs. Texas, 11/27/25

Had Five Blocked Shots

South Carolina 5, Sania Feagin at Ole Miss, 2/27/25
Opponent 5, Rita Igboke, vs. Ole Miss, 3/4/23

Had 20 Points and 20 Rebounds

South Carolina Aliyah Boston (28 pts/22 rebs) vs. N. Carolina, 3/25/22
Opponent Teaira McCowan (26 pts/24 rebs) at Mississippi State, 1/17/19

Two Players had a Double-Double

South Carolina Madina Okot (14 pts/12 rebs) / Adhel Tac (11 pts/10 rebs) vs. Queens, 11/23/25
Opponent Angel Reese (15 pts/13 rebs) / Aneesah Morrow (19 pts/10 rebs) vs. LSU, 3/10/24

Three or More Players had a Double-Double

South Carolina L. Amihere (11 pts/11 rebs) / A. Boston (11 pts/12 rebs) / L. Grissett (13 pts/10 rebs) / V. Saxton (19 pts/12 rebs) vs. Charleston, 11/25/20
Opponent Shakira Austin (10 pts/16 rebs) / Kaila Charles (17 pts/10 rebs) / Channise Lewis (10 pts/12 assts), Maryland, 11/18/18

Had a Triple-Double

South Carolina Chloe Kitts (16 pts/13 rebs/10 assts) at Ole Miss, 2/27/25
Opponent Never

TEAM

Scored 100 Points

South Carolina 103 at USF, 12/18/25
Opponent 103, Clemson, 11/21/03

Won by 50 or More Points

South Carolina 103-44 (59) at USF, 12/18/25
Opponent 97-39 (58) at UConn, 12/17/07

Won by 30-49 Points

South Carolina 95-55 (40) vs. Penn State, 12/14/25
Opponent 66-34 (32), Georgia, 3/4/11

Overcame More Than 15-Point Deficit to Win

South Carolina 18 (16-34) 6:24 in 2nd qtr. vs. Stanford, 12/21/21*
Opponent 16 (21-37) 1:43 in 2nd qtr., at Tennessee, 2/18/21

Shot 65.0% or Better from the Field

South Carolina .662 (43-65) vs. Queens, 11/23/25
Opponent Never

Shot 60.0-64.9% from the Field

South Carolina .629 (44-70) at USF, 12/18/25
Opponent .604 (29-48), Vanderbilt, 1/18/01

Shot 50.0-59.9% from the Field

South Carolina .507 (37-73) vs. Penn State, 12/14/25
South Carolina .507 (34-67) vs. NC Central, 12/7/25
Opponent .500 (25-50), Auburn, 2/2/25

No Players in Double-Figure Points

South Carolina at Auburn, 1/19/12
Opponent at Georgia, 2/6/25

Five Players in Double-Figure Points

South Carolina at USF, 12/18/25
Opponent vs. Indiana, 3/29/24

More Than Five Players in Double-Figure Points

South Carolina 6 vs. Queens, 11/23/25
Opponent 5, at UCLA, 11/24/24

Faced AP Top-25 Opponent

Win 79-77 at No. 22 Louisville, 12/4/25
Loss 67-75 at No. 21 Tennessee, 2/18/21

Faced AP Top-10 Opponent

Win 69-52 vs. No. 8 Southern Cal, 11/15/25
Loss 58-87 vs. No. 7 UConn, 2/16/25

Faced AP Top-5 Opponent

Win 74-57 vs. No. 5 Texas, 4/4/25
Loss 66-64 vs. No. 4 Texas, 11/27/25

Faced AP No. 1 Team

Win 64-45 vs. Texas, 3/9/25 (SEC Tournament championship)
Loss 68-93 vs. Baylor, 3/30/19 (NCAA Sweet 16)

Overtime Game

Win 64-57 at Ole Miss, 2/19/23
Loss 69-70 at Missouri, 12/30/21

Double-Overtime Game

Win 82-73 at Purdue, 12/16/18
Loss 92-94 at Clemson, 11/19/09

South Carolina Was Ranked (AP Poll)

No. 1 No. 1, 11/18/24
Top 5 No. 3, 12/15/25
Top 10 No. 6, 2/24/25
Top 25 No. 15, 3/19/19

* indicates program record

SOUTH CAROLINA SINGLE-QUARTER RECORDS

TEAM			INDIVIDUAL		
Scoring			Scoring		
Most	Points		Most	Points	
1. vs. Saint Peter's, 11/22/16, 1st qtr.	37		1. Kaela Davis at Auburn, 1/5/17, 1st qtr.	19	
2. vs. Florida, 2/13/25, 1st qtr.	36		2. A'ja Wilson vs. Notre Dame, 11/26/17, 4th qtr.	18	
at Kentucky, 1/12/23, 4th qtr.	36		3. Alexis Jennings at Florida, 2/17/19, 3rd qtr.	17	
vs. Alabama, 2/3/22, 1st qtr.	36		4. Zia Cooke at Georgia, 1/2/23, 4th qtr.	15	
at Vanderbilt, 1/12/20, 3rd qtr.	36		Aliyah Boston vs. Florida, 12/31/20, 2nd qtr.	15	
vs. Alabama State, 3rd qtr.	36		M. Herbert Harrigan vs. TX A&M, 3/1/20, 1st qtr.	15	
			Kaela Davis vs. Quinnipiac, 3/25/17, 3rd qtr.	15	
			Tina Roy vs. Arkansas, 1/3/16, 3rd qtr.	15	
Fewest	Points		Rebounding		
1. vs. App State, 12/5/18, 4th qtr.	5		Most	Rebs	
2. vs. Oregon State, 3/23/21, 4th qtr.	6		1. Kamilla Cardoso vs. Ole Miss, 3/4/23, 2nd qtr.	9	
vs. Indiana, 11/28/19, 4th qtr.	6		Aliyah Boston vs. N. Carolina, 3/25/22, 4th qtr.	9	
vs. St. John's, 11/25/17, 2nd qtr.	6		LeLe Grissett at Vanderbilt, 1/14/21, 4th qtr.	9	
vs. Stanford, 3/31/17, 2nd qtr.	6		Aliyah Boston vs. UConn, 2/10/20, 1st qtr.	9	
vs. UCLA, 12/18/16, 1st qtr.	6		Aliyah Boston vs. Arkansas, 1/9/20, 1st qtr.	9	
			Alaina Coates at Arkansas, 2/5/17, 1st qtr.	9	
			Alaina Coates at Georgia, 1/26/17, 2nd qtr.	9	
Fewest Allowed	Points		Rebounding		
1. vs. Texas, 3/30/21, 4th qtr.	0		Total	Rebs	
at Vanderbilt, 1/14/21, 2nd qtr.	0		1. vs. Arkansas, 3/7/20, 4th qtr.	28	
at Ole Miss, 1/30/20, 1st qtr.	0		2. vs. Charleston, 11/25/20, 3rd qtr.	22	
4. vs. NC Central, 12/7/25 3rd qtr.	2		3. vs. Howard, 3/18/22, 1st qtr.	21	
vs. Clemson, 11/11/25, 4th qtr.	2		4. vs Coastal Carolina, 12/21/22, 1st qtr.	20	
4 other times	2		vs. Hampton, 11/27/22, 3rd qtr.	20	
			vs. Howard, 3/18/22, 3rd qtr.	20	
			vs. Howard, 3/18/22, 2nd qtr.	20	
			vs. Charleston, 11/25/20, 1st qtr.	20	
			at Ohio State, 11/14/16, 1st qtr.	20	
Most Allowed	Points		Margin		
1. vs. Baylor, 12/2/18, 1st qtr.	32		Rebs	Margin	
at Maryland, 11/13/17, 4th qtr.	32		1. vs. Hampton, 11/27/22, 3rd qtr.	20-2	+18
vs. Kentucky, 2/26/17, 4th qtr.	32		vs. Charleston, 11/25/20, 3rd qtr.	22-4	+18
4. vs. Arkansas, 3/8/19, 3rd qtr.	30		3. vs. Arkansas, 1/22/23, 2nd qtr.	19-2	+17
vs. Connecticut, 3/26/18, 1st qtr.	30		4. vs. Arkansas, 1/22/23, 3rd qtr.	18-2	+16
vs. Syracuse, 3/25/16, 4th qtr.	30		vs. Howard, 3/18/22, 2nd qtr.	20-4	+16
			vs. Arkansas, 3/7/20, 4th qtr.	21-5	+16
Margin of Difference	Score	Margin	Rebounding		
Lead			Total	Rebs	
1. vs. Alabama State, 11/5/19, 3rd qtr.	36-9	+37	1. vs. Arkansas, 3/7/20, 4th qtr.	28	
2. vs. App State, 11/17/19, 1st qtr.	35-3	+32	2. vs. Charleston, 11/25/20, 3rd qtr.	22	
3. vs. NC Central, 12/7/25, 3rd qtr.	28-2	+26	3. vs. Howard, 3/18/22, 1st qtr.	21	
vs. Charleston, 11/25/20, 3rd qtr.	34-8	+26	4. vs Coastal Carolina, 12/21/22, 1st qtr.	20	
vs. USC Upstate, 11/21/19, 3rd qtr.	33-7	+26	vs. Hampton, 11/27/22, 3rd qtr.	20	
vs. Arkansas, 1/3/16, 2nd qtr.	35-9	+26	vs. Howard, 3/18/22, 3rd qtr.	20	
			vs. Howard, 3/18/22, 2nd qtr.	20	
			vs. Charleston, 11/25/20, 1st qtr.	20	
			at Ohio State, 11/14/16, 1st qtr.	20	
Deficit	Score	Margin	Margin		
1. vs. UConn, 2/1/18, 2nd qtr.	8-29	-21	Rebs	Margin	
2. at Tennessee, 2/15/18, 3rd qtr.	9-29	-20	1. vs. Hampton, 11/27/22, 3rd qtr.	20-2	+18
3. vs. Baylor, 12/2/18, 1st qtr.	13-32	-19	vs. Charleston, 11/25/20, 3rd qtr.	22-4	+18
at Mississippi State, 2/5/18, 4th qtr.	9-28	-19	3. vs. Arkansas, 1/22/23, 2nd qtr.	19-2	+17
5. vs. Indiana, 11/28/19, 4th qtr.	6-24	-18	4. vs. Arkansas, 1/22/23, 3rd qtr.	18-2	+16
vs. Connecticut, 3/26/18, 1st qtr.	12-30	-18	vs. Howard, 3/18/22, 2nd qtr.	20-4	+16
			vs. Arkansas, 3/7/20, 4th qtr.	21-5	+16
Field Goals	FGM		Margin		
Made			Rebs	Margin	
1. at Florida, 2/27/20, 1st qtr.	15		1. vs. Hampton, 11/27/22, 3rd qtr.	20-2	+18
vs. Saint Peter's, 11/22/16, 1st qtr.	15		vs. Charleston, 11/25/20, 3rd qtr.	22-4	+18
3. vs. Florida, 2/13/25, 1st qtr.	14		3. vs. Arkansas, 1/22/23, 2nd qtr.	19-2	+17
vs. Coastal Carolina, 12/21/22, 1st qtr.	14		4. vs. Arkansas, 1/22/23, 3rd qtr.	18-2	+16
vs. Alabama, 2/3/22, 1st qtr.	14		vs. Howard, 3/18/22, 2nd qtr.	20-4	+16
vs. App State, 11/17/19, 1st qtr.	14		vs. Arkansas, 3/7/20, 4th qtr.	21-5	+16
vs. Notre Dame, 11/26/17, 4th qtr.	14				
vs. Arkansas, 1/3/16, 2nd qtr.	14				
Attempts	FGA				
1. vs. Arkansas, 3/7/20, 4th qtr.	28				
2. vs. Duke, 11/26/25, 2nd qtr.	26				
3. vs. Arkansas, 2/20/25, 3rd qtr.	25				
vs. Oklahoma, 1/19/25, 2nd qtr.	25				
vs. Purdue, 11/30/24, 1st qtr.	25				
vs. Howard, 3/18/22, 1st qtr.	25				
vs. Arkansas, 1/9/20, 3rd qtr.	25				



ALL-TIME SELLOUTS

18,478	Georgia, 2/18/24
18,167	UConn, 2/11/24
18,000	Kentucky, 3/2/25
18,000	UConn, 2/16/25
18,000	Auburn, 2/2/25
18,000	LSU, 1/24/25
18,000	Oklahoma, 1/19/25
18,000	Texas, 1/12/25
18,000	East Carolina, 11/17/24
18,000	Tennessee, 3/3/24
18,000	Ole Miss, 2/5/24
18,000	Vanderbilt, 1/28/24
18,000	Georgia, 2/26/23
18,000	LSU, 2/12/23
18,000	Tennessee, 2/20/22
18,000	Texas A&M, 3/1/20
18,000	UConn, 2/10/20
18,000	Mississippi State, 3/3/19
18,000	UConn, 2/1/18
18,000	Kentucky, 2/26/17
18,000	UConn, 2/8/16

YEAR-BY-YEAR RECORD

Year	Record	Pct.	Att. Avg.
2002-03	14-2	.875	3,244
2003-04	5-6	.455	1,828
2004-05	8-9	.471	1,764
2005-06	12-5	.706	1,455
2006-07	15-5	.750	1,845
2007-08	12-6	.667	1,802
2008-09	6-9	.400	2,793
2009-10	7-5	.583	3,442
2010-11	14-5	.737	2,996
2011-12	12-3	.800	3,139
2012-13	12-3	.800	4,082
2013-14	16-0	1.000	6,371
2014-15	16-0	1.000	12,293
2015-16	16-1	.941	14,364
2016-17	15-1	.938	12,277
2017-18	15-2	.882	13,239
2018-19	11-4	.733	11,542
2019-20	15-0	1.000	12,185
2020-21	10-1	.909	3,500*
2021-22	16-0	1.000	12,268
2022-23	17-0	1.000	12,942
2023-24	17-0	1.000	16,067
2024-25	16-1	.941	16,437
2025-26	7-0	1.000	15,880
Total	304-68	.817	7,880*
Staley Era	238-35	.872	10,109*

* 2020-21 attendance not counted in average or streaks due to COVID-19 restrictions

In women's basketball, Colonial Life Arena has become one of the most feared places to play as enormous crowds fill the building with passion for the Gamecocks.

The state of South Carolina has rallied around head coach Dawn Staley's program in unprecedented numbers as the Gamecocks have led the nation in average attendance in each of the last 10 seasons and boast 21 sellouts (18,000) in the last 10 seasons of full capacity arenas.

Colonial Life Arena is more than just the home of South Carolina men's and women's basketball, though. It is also a thriving entertainment venue that the city of Columbia and its surrounding metropolitan area are able to enjoy throughout the year.

Colonial Life Arena is the largest arena in the state of South Carolina with 18,000 seats, and the 10th-largest on-campus basketball facility in the nation. Located on the beautiful University of South Carolina campus, this one-of-a-kind facility features 41 suites, four entertainment suites, and the Frank McGuire Club, a full-service hospitality room that has a capacity of 300. The state-of-the-art facility also features plush seating, a technologically advanced sound system and a one-of-a-kind selection of unique concession foods that will delight fans of all ages.

In Summer 2017, a 12-display center-hung video board and ribbon boards were added to the arena bowl at a cost of \$4.2 million. The center-hung board features four convex-curved main displays that measure approximately 12' x 20' and can show any combination of live video, instant replays, statistics and game information, graphics and animations, and sponsorship messages.

The Arena has hosted numerous sold out shows, including Barnum and Bailey Circus, Paul McCartney, country superstars Kenny Chesney and Taylor Swift, WWE Wrestling, Kanye West and numerous other acts.

The largest building ever constructed at the University of South Carolina at 342,000 square feet, the Arena has an intimate double-deck design that puts every seat close to the action. The cantilever of the upper deck over the lower deck extends further than any other arena of its size with great sight lines.

Two spacious locker rooms for Gamecock men's and women's basketball include team meeting rooms, recruiting rooms, coaches locker rooms and an athletic training room.

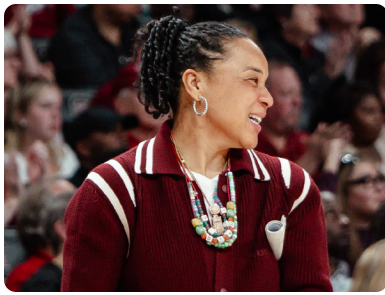
COLONIAL LIFE ARENA NOTABLES

- 10-Time National Attendance Leader (2015-present)
- NCAA Tournament Host in 2015, 2016, 2017, 2018, 2022, 2023, 2024
- 146 consecutive regular-season games with at least 10,000 fans (Jan. 2, 2015-present)*
- 21 official sellouts (18,000) since 2015-16 season
- 6 undefeated seasons
- Longest home win streak – 71 games (12/17/20-2/13/25)

* 2020-21 attendance not counted in average or streaks due to COVID-19 regulation restrictions

"It is a beautiful thing to see unfold because a lot of people really didn't think it could get done. I tip my hat to Gamecock Nation for making this a wonderful place and creating a home court advantage that allows us to win close basketball games."

– South Carolina Head Coach Dawn Staley



Head Coach DAWN STALEY

18th Season at South Carolina
26th Season in Career

Since thrusting South Carolina into the national spotlight when she was hired in May 2008, Dawn Staley has made the Gamecocks a mainstay in the battle for SEC and national championships. The Naismith Memorial Basketball Hall of Fame inductee as a player is angling for another induction as a coach with her standing as one of five head coaches with at least three women's basketball National Championships and the only Black basketball head coach with multiple national titles, one of five head coaches to lead an undefeated team to a National Championship, and the first Black head coach of the USA Basketball Senior National Team.

In Staley's 17 seasons at the helm of the Gamecocks, highlights include:

- Three National Championships (2017, 2022, 2024)
- Seven NCAA Final Fours in the last 10 tournaments (2015, 2017, 2021, 2022, 2023, 2024, 2025)
- Ranking in the AP Top 25 every week since Dec. 10, 2012, the second-longest active streak in the nation and sixth-longest all-time (255)
- 38 straight weeks at No. 1 in the AP Poll, just the third program to go wire-to-wire in back-to-back seasons
- 86 total weeks at No. 1 in the AP Poll, the third-most in the history of that poll
- Eight 30-win seasons, including a program-record 38 wins in 2023-24
- Nine SEC regular-season championships (2014, 2015, 2016, 2017, 2020, 2022, 2023, 2024, 2025)
- Nine SEC Tournament titles (2015, 2016, 2017, 2018, 2020, 2021, 2023, 2024, 2025)
- SEC-record 57 consecutive league regular-season victories, which ranks sixth in NCAA history for conference win streaks
- Four top-two recruiting classes (#2 in 2024, #1 in 2021, #1 in 2019, #2 in 2014)
- 11 NCAA Attendance titles (2015, 2016, 2017, 2018, 2019, 2020, 2021*, 2022, 2023, 2024, 2025)
- 18 WNBA Draft selections, including 11 first-round and two overall No. 1 picks

While her coaching career is in full bloom, Staley is still recognized for her body of work as a one of the most decorated participants in United States women's basketball history. The Naismith Memorial Basketball Hall of Fame solidified that legacy with her enshrinement as part of the Class of 2013. The Phoenix Club of Philadelphia established the Dawn Staley Award recognizing the nation's top guard in women's Division I basketball in 2013 as well. Staley was inducted into the Women's Basketball Hall of Fame as part of the Class of 2012, and she was part of the FIBA Hall of Fame Class of 2025.

In her 26th season as a head coach, Staley has led her college teams to 15 25-win seasons, a total of 21 postseason appearances (two WNIT) and 214 weeks in the Associated Press top 10, including 86 in the No. 1 spot – the third most times in the top spot in the history of that poll. Her .775 winning percentage (658-191) ranks ninth in the nation among active head coaches and 10th all-time.

Also a force in USA Basketball, Staley was named the U.S. Women's National Team head coach for 2017-21, leading the U.S. to 2018 FIBA World Cup gold to earn USA National Coach of the Year honors that year, adding gold medals at the 2019 and 2021 FIBA AmeriCups and stretching the U.S. Olympic gold medal streak to seven straight at the 2020 Tokyo Olympic Games, for which she again earned Coach of the Year honors. Prior to that appointment, Staley led three other U.S. teams to gold medals – 2015 FIBA U19 World Championships, 2014 FIBA U18 Americas Championship, 2007 Pan Am Games – and served as an assistant on the Senior National Team 2006-08 and again 2014-16, during which the U.S. claimed gold in the 2014 FIBA World Championship and the 2008 and 2016 Olympics.

STALEY AT SOUTH CAROLINA YEAR-BY-YEAR

Year	School	Record	Conf. Rec.	Conf. Finish	Postseason
2008-09	South Carolina	10-18	2-12	11th	
2009-10	South Carolina	14-15	7-9	T-7th	
2010-11	South Carolina	18-15	8-8	T-5th	WNIT 2nd Round
2011-12	South Carolina	25-10	10-6	T-4th	NCAA Sweet 16
2012-13	South Carolina	25-8	11-5	T-4th	NCAA 2nd Round
2013-14	South Carolina	29-5	14-2	1st	NCAA Sweet 16
2014-15	South Carolina	34-3	15-1	T-1st	SEC Tourn. Champ./NCAA Final Four
2015-16	South Carolina	33-2	16-0	1st	SEC Tourn. Champ./NCAA Sweet 16
2016-17	South Carolina	33-4	14-2	1st	SEC Tourn. Champ./NCAA Champ.
2017-18	South Carolina	29-7	12-4	T-2nd	SEC Tourn. Champ./NCAA Elite Eight
2018-19	South Carolina	23-10	13-3	2nd	NCAA Sweet 16
2019-20	South Carolina	32-1	16-0	1st	SEC Tourn. Champ./NCAA canceled)
2020-21	South Carolina	26-5	14-2	2nd	SEC Tourn. Champ./NCAA Final Four
2021-22	South Carolina	35-2	15-1	1st	NCAA Champion
2022-23	South Carolina	36-1	16-0	1st	SEC Tourn. Champ./NCAA Final Four
2023-24	South Carolina	38-0	16-0	1st	SEC Tourn., Champ./NCAA Champ
2024-25	South Carolina	35-4	15-1	T-1st	SEC Tourn. Champ./NCAA Runner-Up
2025-26	South Carolina	11-1			
At Temple	8 seasons	172-80	99-25	3 A-10 Titles	4 A-10 Tourn. Titles, 6 NCAA appearances
At SC	18th season	486-111	214-56	9 SEC Titles	9 SEC Trn. Titles, 3 NCAA Titles
Career	26th season	658-191	313-81		

STALEY HIGHLIGHTS

Coaching Highlights

College

- 18 NCAA Tournament Appearances (12 at SC)
- 3x NCAA National Champion (2017, 2022, 2024)
- 7 30-Win Seasons
- 10 Regular-Season Conference Titles (SEC 2014, 2015, 2016, 2017, 2020, 2022, 2023, 2024, 2025; A-10 2008)
- 12 Conference Tournament Titles (SEC 2015, 2016, 2017, 2018, 2020, 2021, 2023, 2024; A-10 2002, 2004, 2005, 2006)
- 5-time National Coach of the Year (2014, 2020, 2022, 2023)
- 4-time WBCA Region Coach of the Year (Region 3 2014, 2015, 2016; Region 1 2005)
- 9x Conference Coach of the Year (SEC 2014, 2015, 2016, 2020, 2022, 2023, 2024; A-10 2004, 2005)

USA Basketball

- Senior National Team Head Coach (2017-21) – Tokyo Olympics gold (2020); FIBA AmeriCup gold (2021); co-National Coach of the Year (2021); FIBA AmeriCup gold (2019), FIBA World Cup gold (2018), National Coach of the Year (2018)
- Senior National Team Asst. Coach (2006-08, 2014-16) – Rio Olympics gold medal (2016), FIBA World Championship gold medal (2014), Beijing Olympics gold medal (2008), FIBA Americas Championship gold medal (2007), FIBA World Championship bronze medal (2006)
- U19 National Team Head Coach – FIBA U19 World Championship gold medal (2015), co-National Coach of the Year (2015)
- U18 National Team Head Coach – FIBA U18 Americas Championship gold medal (2014)
- Pan Am Games Head Coach – Gold medal (2007)

Playing Highlights

U.S. Professional – 11 seasons

- Five-time WNBA All-Star (2001, 2002, 2003, 2005, 2006)
- Two-time ABL All-Star (1997, 1998)
- WNBA All-Decade Team

USA Basketball

- Olympic gold medalist (1996, 2000, 2004)
- Flag bearer for U.S. in Olympic Games Opening Ceremony (2004)
- Two-time USA Basketball Female Athlete of the Year (1994, 2004)

College – Virginia (1989-92)

- Kodak All-America (1990, 1991, 1992)
- Honda-Broderick Cup Award for Collegiate Female Athlete of the Year (1991)
- Two-time ACC Player of the Year (1991, 1992)
- NCAA Tournament MOP (1991)

Other Notables

- FIBA Hall of Fame, Class of 2025
- Naismith Mem. Basketball Hall of Fame, Class of 2013
- Order of the Palmetto Recipient (2013)
- Women's Basketball Hall of Fame, Class of 2012
- Two-time Wanamaker Award (1997, 2005)
- Henry P. Iba Citizenship Award (2007)

In her 19th season at the helm of the Gamecocks, Staley has been named National Coach of the Year five times (2014, 2020, 2022, 2023, 2024). Her 2020 unanimous selection made her the first former Naismith Player of the Year to earn the Naismith Coach of the Year award, and she became the first men's or women's coach to claim the award in three straight seasons 2022-24. She is a seven-time SEC Coach of the Year and was the 2012 BCA Female Coach of the Year. She is the only Gamecock basketball coach – men's or women's – to amass 300 victories at South Carolina and became the fastest coach to 200 wins in program history, needing just 277 games at South Carolina to reach the plateau. She is the program's all-time winningest coach with **484 wins, a .813 (484-111) winning percentage** and a program-record 14 postseason appearances.

In the vaunted SEC, Staley's 214 league wins are the most among active league coaches and third all-time, trailing just Women's Basketball Hall of Fame Inductees Andy Landers (Georgia, 273) and Pat Summitt (Tennessee, 306). She was the second fastest to 200 league wins (255 games), trailing only Summitt at 229. Her .793 SEC winning percentage (214-56) is second only to Summitt (.874) in league history. Her Gamecocks are the only SEC program with multiple 16-0 seasons in league history, hitting that mark four times (2015-16, 2019-20, 2022-23, 2023-24). Staley's back-to-back SEC undefeated seasons helped the Gamecocks to an SEC-record 57-game win streak in league play, which ranks sixth in NCAA history for conference win streaks.

In addition to coaching two National Players of the Year, two National Defensive Players of the Year and a National Freshman of the Year, Staley has helped 13 Gamecocks collect 29 All-America selections, three to pick up seven SEC Player of the Year honors, four to earn SEC Defensive Player of the Year recognition a total of eight times, three to SEC 6th Player of the Year honors and six to capture SEC Freshman of the Year. She has coached 23 Gamecocks to All-SEC honors a combined 44 times, including 22 first-team selections. Since her first Gamecock was selected in the 2015 WNBA Draft, a total of 18 South Carolina have been chosen, which is the second-most of any program in that timeframe. Of those 18, 11 have been first-round picks, highlighted by two No. 1 overall picks since 2018. Three Gamecocks have been named WNBA Rookie of the Year and have amassed 13 All-Star selections. Aja Wilson went on to become a three-time WNBA MVP and two-time WNBA Defensive Player of the Year.



SOUTH CAROLINA DAWN STALEY ERA SINGLE-GAME RECORDS

Scoring

Most	Points
1. vs. Queens, 11/23/25	121
2. vs. Charleston, 11/25/20	119
3. 2x, last, vs. Bowling Green, 11/7/25	114

Fewest

Fewest	Points
1. at Stanford, 11/26/10	32*
2. vs. Georgia, 3/4/11	34
3. vs. Mississippi State, 3/5/09	39

Fewest Allowed

Fewest Allowed	Points
1. vs. Mississippi Valley State, 11/24/23	19*
2. vs. Howard, 3/18/22	21
vs. South Carolina State, 12/14/11	21

Most Allowed

Most Allowed	Points
1. at Connecticut, 2/11/19	97
2. vs. Arkansas, 3/8/19	95
3. 3x, most recent, vs. Baylor, 12/2/18	94

Margin of Victory

Margin of Victory	Score	Margin
1. vs. Miss. Valley State, 11/24/23	101-19	+82
2. vs. Charleston, 11/25/20	119-38	+81
3. vs. Queens, 11/23/25	121-49	+72

Margin of Defeat

Margin of Defeat	Score	Margin
1. at Stanford, 11/26/10	32-70	-38
2. vs. Georgia, 3/4/11	34-66	-32
3. vs. Stanford, 12/19/08	47-78	-31

Field Goals

Made	FGM
1. at USF, 12/18/25	44
vs. Clemson, 11/16/23	44
3. 6x, most recent, vs. Queens, 11/23/25	43

Attempts

Attempts	FGA
1. vs. Clemson, 11/16/23	83
vs. Maryland, 11/12/23	83
3. 2x, most recent, vs. Arkansas, 2/20/25	82

Highest Percentage (Min. 24 FGM)

Highest Percentage (Min. 24 FGM)	FGM-A	Pct
1. vs. Morgan State, 12/6/23	41-60	.683
2. at Texas A&M, 1/21/24	39-58	.672
3. vs. Tennessee Tech, 3/21/25	43-64	.672

Lowest Percentage

Lowest Percentage	FGM-A	Pct
1. at Stanford, 11/26/10	12-55	.218
2. vs. Georgia, 3/4/11	12-52	.231
3. at Florida, 1/20/13	15-64	.234

Lowest %age Allowed

Lowest %age Allowed	FGM-A	Pct
1. vs. Miss. Valley State, 11/24/23	8-67	.119*
2. vs. South Carolina State, 12/14/11	6-48	.125
3. vs. Howard, 3/18/22	8-54	.148

Highest %age Allowed (Min. 24 FGM)

Highest %age Allowed (Min. 24 FGM)	FGM-A	Pct
1. vs. UConn, 3/26/18	37-63	.587
2. vs. UConn, 2/11/19	37-65	.569
3. 2x, most recent vs. UConn, 12/28/08	35-62	.565

3-Point Field Goals

Made	3FGM
1. vs. Minnesota, 12/11/16	16
2. vs. Temple, 12/21/18	15
3. 2x, most recent, vs. App. State, 12/5/18	14

Attempts

Attempts	3FGA
1. vs. Howard, 3/18/22	38
2. vs. Minnesota, 12/11/16	33
3. vs. Syracuse, 3/25/16	32

Percentage (Min. 10 3FGM)

Percentage (Min. 10 3FGM)	3FGM-A	Pct
1. vs. ETSU, 11/22/18	11-16	.688
2. vs. Tennessee Tech, 3/21/24	12-19	.632
3. vs. Quinnipiac, 3/25/17	10-16	.625

Free Throws

Made	FTM
1. vs. Savannah State, 12/14/14	34
vs. Oregon State, 3/25/14	34
3. 3x, most recent, vs. Missouri, 1/10/16	32

Attempts

Attempts	FTA
1. at Mississippi State, 1/6/13	50
2. vs. Savannah State, 12/28/13	48
3. 2x, most recent, vs. Charleston, 11/25/20	47

Percentage (Min. 26 FTM)

Percentage (Min. 26 FTM)	FTM-A	Pct
1. vs. Arkansas, 1/22/23	27-33	.818
2. vs. ETSU, 11/22/18	28-35	.800
vs. Hampton, 11/20/16	28-35	.800

Rebounding

Total	Rebs
1. vs. Arkansas, 1/22/23	74
2. vs. Clemson, 11/16/23	73
vs. Charleston, 11/25/20	73

Margin

Margin	Rebs	Margin
1. vs. Arkansas, 1/22/23	74-17	+57
2. vs. Hampton, 11/27/22	62-15	+47
3. vs. Clemson, 11/16/23	73-27	+46

Offensive

Offensive	Off. Rebs
1. vs. Arkansas, 1/22/23	32
2. vs. Tennessee, 2/20/22	31
3. 2x, most recent, vs. Purdue, 11/30/24	30

Turnovers

Fewest	TOs
1. vs. Purdue, 11/30/24	4
at Tennessee, 2/2/12	4
2. vs. Penn State, 12/14/25	5
10 other times	5

Most

Most	TOs
1. at Wake Forest, 12/3/08	32
2. 3x, most recent, at Ole Miss, 2/25/16	29

Assists

Assists	
1. at Kentucky, 2/25/24	30
vs. Clemson, 11/16/23	30
vs. Maryland, 11/12/23	30

Steals

Steals	
1. at Alabama State, 11/11/18	22
2. 3x, most recent, vs. Alabama St., 11/10/17	21

Blocked Shots

Blocked Shots	
1. vs. Presbyterian, 12/16/23	17*
vs. Appalachian State, 11/17/19	17*
3. 5x, most recent, vs. South Dak. St., 11/20/23	16

* indicates also a school record

PLAYER GAME-BY-GAME AND CAREER STATS

#00 LATSON, Ta'Niya

Opponent	Date	GS	MIN	Total		3-Pointers		Free throws		Rebounds				PF	A	TO	BLK	STL	PTS	AVG
				FG-FGA	PCT	3FG-3FGA	PCT	FT-FTA	PCT	OFF	DEF	TOT	AVG							
Grand Canyon	11/03/2025	*	28:06	7-10	.700	1-2	.500	5-8	.625	0	1	1	1.0	2	4	2	0	1	20	20.0
Bowling Green	11/07/2025	*	31:29	5-11	.455	0-2	.000	7-7	1.000	0	4	4	2.5	2	4	1	1	0	17	18.5
Clemson	11/11/2025	*	34:23	4-8	.500	1-1	1.000	3-4	.750	0	8	8	4.3	0	3	4	2	0	12	16.3
vs Southern California	11/15/2025	*	28:22	6-14	.429	0-0	.000	0-0	.000	2	2	4	4.3	3	2	1	0	1	12	15.3
Winthrop	11/19/2025	*	25:03	8-11	.727	2-4	.500	6-9	.667	1	4	5	4.4	1	4	2	0	1	24	17.0
Queens (NC)	11/23/2025	*	27:40	9-11	.818	2-2	1.000	4-5	.800	0	2	2	4.0	1	5	2	1	3	24	18.2
vs Duke	11/26/2025	*	25:57	6-13	.462	0-2	.000	0-0	.000	0	1	1	3.6	2	2	1	0	0	12	17.3
vs Texas	11/27/2025	*	31:47	4-12	.333	1-1	1.000	7-8	.875	4	0	4	3.6	1	2	3	0	2	16	17.1
at Louisville	12/04/2025	*	38:19	3-9	.333	1-4	.250	2-2	1.000	0	1	1	3.3	2	5	1	0	0	9	16.2
N.C. Central	12/07/2025	*	34:39	11-18	.611	5-6	.833	5-5	1.000	1	3	4	3.4	2	2	0	1	3	32	17.8
Penn St.	12/14/2025	*	35:16	5-14	.357	1-7	.143	7-7	1.000	0	6	6	3.6	1	8	1	1	4	18	17.8
at South Fla.	12/18/2025	*	29:15	7-15	.467	0-1	.000	1-2	.500	0	3	3	3.6	0	4	3	1	6	15	17.6
Totals		12	370:17	75-146	.514	14-32	.438	47-57	.825	8	35	43	3.6	17	45	21	7	21	211	17.6

Player Averages

Games Played	Minutes/game	Points/game	FG Pct	3FG Pct	FT Pct	Rebounds/game	Assists/game	Turnovers/game	Assist/Turnover ratio	Steals/game	Blocks/game
12	30.9	17.6	51.4	43.8	82.5	3.6	3.8	1.8	2.1	1.8	0.6

LATSON, Ta'niya

				Field Goals		3-Point		F-Throws		Rebounds									Scoring	
SEASON	TEAM	GP-GS	MIN/AVG	FG-FGA	FG%	3FG-3FGA	3FG%	FT-FTA	FT%	OFF	DEF	TOT	AVG	PF-FO	A	TO	BLK	STL	PTS	AVG
2022-23	FSU	31-31	913/29.5	225-494	.455	38-105	.362	171-199	.859	40	99	139	4.5	61-2	90	82	21	51	659	21.3
2023-24	FSU	33-33	1023/31.0	258-589	.438	27-100	.270	162-190	.853	18	119	137	4.2	53-3	137	100	15	50	705	21.4
2024-25	FSU	29-29	874/30.2	255-565	.451	37-108	.343	184-225	.818	33	100	133	4.6	52-2	134	89	14	63	731	25.2
2025-26	SC	12-12	370/30.9	75-146	.514	14-32	.438	47-57	.825	8	35	43	3.6	17-0	45	21	7	21	211	17.6
TOTAL FOR SC		12-12	370/30.9	75-146	.514	14-32	.438	47-57	.825	8	35	43	3.6	17-0	45	21	7	21	211	17.6
TOTAL		105-105	3181/30.3	813-1794	.453	116-345	.336	564-671	.841	99	353	452	4.3	183-7	406	292	57	185	2306	22.0

#1 MCDANIEL, Maddy

Opponent	Date	GS	MIN	Total		3-Pointers		Free throws		Rebounds				PF	A	TO	BLK	STL	PTS	AVG
				FG-FGA	PCT	3FG-3FGA	PCT	FT-FTA	PCT	OFF	DEF	TOT	AVG							
Grand Canyon	11/03/2025		07:41	1-2	.500	1-1	1.000	0-0	.000	0	0	0	0.0	2	2	0	0	0	3	3.0
Queens (NC)	11/23/2025		12:16	1-2	.500	0-0	.000	0-0	.000	0	1	1	0.5	1	3	0	0	1	2	2.5
vs Duke	11/26/2025		19:21	2-3	.667	0-1	.000	1-2	.500	0	1	1	0.7	0	1	0	0	1	5	3.3
vs Texas	11/27/2025		13:00	0-2	.000	0-1	.000	0-0	.000	0	0	0	0.5	0	2	0	0	0	0	2.5
at Louisville	12/04/2025		05:13	0-1	.000	0-1	.000	0-0	.000	0	1	1	0.6	0	0	0	0	1	0	2.0
N.C. Central	12/07/2025		24:16	0-2	.000	0-1	.000	8-10	.800	1	2	3	1.0	2	3	0	0	2	8	3.0
Penn St.	12/14/2025		21:27	3-6	.500	2-3	.667	1-3	.333	1	3	4	1.4	2	2	1	0	1	9	3.9
at South Fla.	12/18/2025		22:04	2-6	.333	0-0	.000	3-4	.750	1	1	2	1.5	3	5	0	0	3	7	4.3
Totals		0	125:19	9-24	.375	3-8	.375	13-19	.684	3	9	12	1.5	10	18	1	0	9	34	4.3

Player Averages

Games Played	Minutes/game	Points/game	FG Pct	3FG Pct	FT Pct	Rebounds/game	Assists/game	Turnovers/game	Assist/Turnover ratio	Steals/game	Blocks/game
8	15.7	4.3	37.5	37.5	68.4	1.5	2.3	0.1	18.0	1.1	0.0

MCDANIEL, Maddy

				Field Goals		3-Point		F-Throws		Rebounds										Scoring	
SEASON	TEAM	GP-GS	MIN/AVG	FG-FGA	FG%	3FG-3FGA	3FG%	FT-FTA	FT%	OFF	DEF	TOT	AVG	PF-FO	A	TO	BLK	STL	PTS	AVG	
2024-25	SC	30-0	329/11.0	34-68	.500	3-13	.231	22-32	.688	2	23	25	0.8	18-0	51	17	1	21	93	3.1	
2025-26	SC	8-0	125/15.7	9-24	.375	3-8	.375	13-19	.684	3	9	12	1.5	10-0	18	1	0	9	34	4.3	
TOTAL		38-0	454/11.9	43-92	.467	6-21	.286	35-51	.686	5	32	37	1.0	28-0	69	18	1	30	127	3.3	

PLAYER GAME-BY-GAME AND CAREER STATS

#5 JOHNSON, Tessa

Opponent	Date	GS	MIN	Total		3-Pointers		Free throws		Rebounds				PF	A	TO	BLK	STL	PTS	AVG
				FG-FGA	PCT	3FG-3FGA	PCT	FT-FTA	PCT	OFF	DEF	TOT	AVG							
Grand Canyon	11/03/2025	*	32:31	8-13	.615	3-6	.500	0-0	.000	1	4	5	5.0	1	3	1	1	1	19	19.0
Bowling Green	11/07/2025	*	26:59	6-11	.545	2-5	.400	0-0	.000	2	5	7	6.0	2	3	5	0	0	14	16.5
Clemson	11/11/2025	*	35:15	5-8	.625	2-4	.500	1-1	1.000	0	2	2	4.7	0	3	1	1	0	13	15.3
vs Southern California	11/15/2025	*	36:34	4-11	.364	2-4	.500	4-4	1.000	1	3	4	4.5	2	5	3	0	1	14	15.0
Winthrop	11/19/2025	*	29:21	3-8	.375	3-7	.429	0-0	.000	0	1	1	3.8	1	1	0	1	0	9	13.8
Queens (NC)	11/23/2025	*	21:21	5-8	.625	3-5	.600	0-0	.000	0	1	1	3.3	0	5	1	0	0	13	13.7
vs Duke	11/26/2025	*	31:02	2-6	.333	1-2	.500	0-0	.000	0	1	1	3.0	1	0	0	1	1	5	12.4
vs Texas	11/27/2025	*	36:43	5-10	.500	1-3	.333	0-0	.000	0	0	0	2.6	3	3	2	0	0	11	12.3
at Louisville	12/04/2025	*	38:10	7-13	.538	4-7	.571	2-2	1.000	2	5	7	3.1	1	3	1	0	0	20	13.1
Penn St.	12/14/2025	*	25:41	6-15	.400	1-5	.200	2-4	.500	1	5	6	3.4	0	1	1	0	1	15	13.3
at South Fla.	12/18/2025	*	25:45	7-9	.778	2-4	.500	0-0	.000	0	4	4	3.5	2	2	0	0	0	16	13.5
Totals			11 339:22	58-112	.518	24-52	.462	9-11	.818	7	31	38	3.5	13	29	15	4	4	149	13.5

Player Averages

Games Played	Minutes/ game	Points/ game	FG Pct	3FG Pct	FT Pct	Rebounds/ game	Assists/ game	Turnovers/ game	Assist/Turnover ratio	Steals/ game	Blocks/ game
11	30.9	13.5	51.8	46.2	81.8	3.5	2.6	1.4	1.9	0.4	0.4

JOHNSON, Tessa

				Field Goals		3-Point		F-Throws		Rebounds										Scoring	
SEASON	TEAM	GP-GS	MIN/AVG	FG-FGA	FG%	3FG-3FGA	3FG%	FT-FTA	FT%	OFF	DEF	TOT	AVG	PF-FO	A	TO	BLK	STL	PTS	AVG	
2023-24	SC	35-2	625/17.9	76-170	.447	35-81	.432	44-51	.863	11	50	61	1.7	24-0	40	32	3	24	231	6.6	
2024-25	SC	37-0	783/21.2	108-228	.474	46-107	.430	47-57	.825	16	64	80	2.2	45-0	54	46	13	25	309	8.4	
2025-26	SC	11-11	339/30.9	58-112	.518	24-52	.462	9-11	.818	7	31	38	3.5	13-0	29	15	4	4	149	13.5	
TOTAL		83-13	1748/21.1	242-510	.475	105-240	.438	100-119	.840	34	145	179	2.2	82-0	123	93	20	53	689	8.3	

#8 EDWARDS, Joyce

Opponent	Date	GS	MIN	Total		3-Pointers		Free throws		Rebounds				PF	A	TO	BLK	STL	PTS	AVG
				FG-FGA	PCT	3FG-3FGA	PCT	FT-FTA	PCT	OFF	DEF	TOT	AVG							
Grand Canyon	11/03/2025	*	27:10	5-11	.455	0-2	.000	3-4	.750	2	3	5	5.0	3	1	2	1	0	13	13.0
Bowling Green	11/07/2025	*	25:10	11-12	.917	0-0	.000	2-3	.667	3	1	4	4.5	0	3	0	3	0	24	18.5
Clemson	11/11/2025	*	30:16	8-17	.471	0-0	.000	2-3	.667	3	5	8	5.7	1	2	1	3	1	18	18.3
vs Southern California	11/15/2025	*	35:09	7-16	.438	0-0	.000	3-8	.375	4	6	10	6.8	3	4	6	2	2	17	18.0
Winthrop	11/19/2025	*	27:33	9-13	.692	0-0	.000	4-6	.667	3	2	5	6.4	1	1	2	0	1	22	18.8
Queens (NC)	11/23/2025	*	25:10	9-11	.818	0-0	.000	7-9	.778	2	2	4	6.0	3	3	1	2	2	25	19.8
vs Duke	11/26/2025	*	31:51	9-18	.500	0-1	.000	4-5	.800	1	5	6	6.0	1	6	1	0	3	22	20.1
vs Texas	11/27/2025	*	30:36	7-16	.438	0-0	.000	2-4	.500	1	3	4	5.8	3	3	0	1	2	16	19.6
at Louisville	12/04/2025	*	35:17	5-12	.417	1-1	1.000	1-2	.500	1	4	5	5.7	1	0	3	0	3	12	18.8
N.C. Central	12/07/2025	*	33:38	9-11	.818	0-0	.000	7-10	.700	4	6	10	6.1	3	6	7	3	4	25	19.4
Penn St.	12/14/2025	*	32:59	13-20	.650	1-1	1.000	2-6	.333	2	2	4	5.9	1	5	0	4	6	29	20.3
at South Fla.	12/18/2025	*	27:40	14-15	.933	0-0	.000	6-8	.750	1	4	5	5.8	2	1	4	2	1	34	21.4
Totals			12 362:29	106-172	.616	2-5	.400	43-68	.632	27	43	70	5.8	22	35	27	21	25	257	21.4

Player Averages

Games Played	Minutes/ game	Points/ game	FG Pct	3FG Pct	FT Pct	Rebounds/ game	Assists/ game	Turnovers/ game	Assist/Turnover ratio	Steals/ game	Blocks/ game
12	30.2	21.4	61.6	40.0	63.2	5.8	2.9	2.3	1.3	2.1	1.8

EDWARDS, Joyce

				Field Goals		3-Point		F-Throws		Rebounds									Scoring	
SEASON	TEAM	GP-GS	MIN/AVG	FG-FGA	FG%	3FG-3FGA	3FG%	FT-FTA	FT%	OFF	DEF	TOT	AVG	PF-FO	A	TO	BLK	STL	PTS	AVG
2024-25	SC	39-1	831/21.3	193-365	.529	0-3	.000	108-139	.777	85	110	195	5.0	63-0	48	69	21	42	494	12.7
2025-26	SC	12-12	362/30.2	106-172	.616	2-5	.400	43-68	.632	27	43	70	5.8	22-0	35	27	21	25	257	21.4
TOTAL		51-13	1194/23.4	299-537	.557	2-8	.250	151-207	.729	112	153	265	5.2	85-0	83	96	42	67	751	14.7

PLAYER GAME-BY-GAME AND CAREER STATS

#11 OKOT, Madina

Opponent	Date	GS	MIN	Total		3-Pointers		Free throws		Rebounds				PF	A	TO	BLK	STL	PTS	AVG
				FG-FGA	PCT	3FG-3FGA	PCT	FT-FTA	PCT	OFF	DEF	TOT	AVG							
Grand Canyon	11/03/2025	*	17:26	4-5	.800	0-0	.000	4-6	.667	0	4	4	4.0	3	0	0	0	0	12	12.0
Bowling Green	11/07/2025	*	21:36	6-9	.667	0-0	.000	1-1	1.000	4	7	11	7.5	0	2	0	4	1	13	12.5
Clemson	11/11/2025	*	24:46	5-12	.417	0-0	.000	2-2	1.000	4	8	12	9.0	3	1	1	1	1	12	12.3
vs Southern California	11/15/2025	*	34:45	3-9	.333	0-0	.000	0-0	.000	5	10	15	10.5	2	0	2	2	1	6	10.8
Winthrop	11/19/2025	*	25:16	10-12	.833	0-0	.000	3-4	.750	6	5	11	10.6	2	3	2	3	1	23	13.2
Queens (NC)	11/23/2025	*	19:16	5-8	.625	0-1	.000	4-4	1.000	2	10	12	10.8	1	0	0	3	2	14	13.3
vs Duke	11/26/2025	*	30:32	11-18	.611	0-1	.000	1-2	.500	5	8	13	11.1	1	2	3	2	4	23	14.7
vs Texas	11/27/2025	*	34:05	5-7	.714	0-0	.000	2-2	1.000	1	10	11	11.1	5	1	4	1	1	12	14.4
at Louisville	12/04/2025	*	32:38	10-16	.625	0-0	.000	3-7	.429	3	10	13	11.3	2	2	4	0	0	23	15.3
N.C. Central	12/07/2025	*	10:53	5-9	.556	0-0	.000	0-1	.000	7	2	9	11.1	0	1	2	1	1	10	14.8
at South Fla.	12/18/2025	*	20:38	6-7	.857	0-1	.000	0-0	.000	2	8	10	11.0	1	1	1	1	1	12	14.5
Totals		11	271:52	70-112	.625	0-3	.000	20-29	.690	39	82	121	11.0	20	13	19	18	13	160	14.5

Player Averages

Games Played	Minutes/game	Points/game	FG Pct	3FG Pct	FT Pct	Rebounds/game	Assists/game	Turnovers/game	Assist/Turnover ratio	Steals/game	Blocks/game
11	24.7	14.5	62.5	0.0	69.0	11.0	1.2	1.7	0.7	1.2	1.6

OKOT, Madina

				Field Goals		3-Point		F-Throws		Rebounds										Scoring	
SEASON	TEAM	GP-GS	MIN/AVG	FG-FGA	FG%	3FG-3FGA	3FG%	FT-FTA	FT%	OFF	DEF	TOT	AVG	PF-FO	A	TO	BLK	STL	PTS	AVG	
2024-25	MS	34-34	769/22.6	170-262	.649	0-0	.000	45-72	.625	120	205	325	9.6	90-3	24	85	38	46	385	11.3	
2025-26	SC	11-11	272/24.7	70-112	.625	0-3	.000	20-29	.690	39	82	121	11.0	20-1	13	19	18	13	160	14.5	
TOTAL FOR SC		11-11	272/24.7	70-112	.625	0-3	.000	20-29	.690	39	82	121	11.0	20-1	13	19	18	13	160	14.5	
TOTAL		45-45	1041/23.1	240-374	.642	0-3	.000	65-101	.644	159	287	446	9.9	110-4	37	104	56	59	545	12.1	

#15 TAC, Adhel

Opponent	Date	GS	MIN	Total		3-Pointers		Free throws		Rebounds				PF	A	TO	BLK	STL	PTS	AVG
				FG-FGA	PCT	3FG-3FGA	PCT	FT-FTA	PCT	OFF	DEF	TOT	AVG							
Grand Canyon	11/03/2025		14:45	1-2	.500	0-0	.000	0-1	.000	1	5	6	6.0	1	0	0	1	0	2	2.0
Bowling Green	11/07/2025		12:21	1-2	.500	0-0	.000	1-2	.500	1	1	2	4.0	1	2	0	1	1	3	2.5
Clemson	11/11/2025		05:57	0-0	.000	0-0	.000	0-0	.000	0	3	3	3.7	1	0	1	0	0	0	1.7
Winthrop	11/19/2025		12:44	3-3	1.000	0-0	.000	0-0	.000	1	4	5	4.0	2	0	0	1	0	6	2.8
Queens (NC)	11/23/2025		18:49	3-3	1.000	0-0	.000	5-8	.625	1	9	10	5.2	0	1	2	1	1	11	4.4
vs Duke	11/26/2025		07:02	0-0	.000	0-0	.000	2-2	1.000	1	0	1	4.5	1	0	1	0	0	2	4.0
vs Texas	11/27/2025		07:58	1-1	1.000	0-0	.000	0-0	.000	0	4	4	4.4	0	0	0	2	0	2	3.7
at Louisville	12/04/2025		03:23	0-1	.000	0-0	.000	1-2	.500	1	0	1	4.0	1	0	0	0	0	1	3.4
N.C. Central	12/07/2025	*	21:59	0-3	.000	0-0	.000	2-2	1.000	1	2	3	3.9	1	0	1	1	0	2	3.2
Penn St.	12/14/2025	*	14:31	1-3	.333	0-0	.000	0-2	.000	2	1	3	3.8	2	0	1	0	1	2	3.1
at South Fla.	12/18/2025		11:18	2-3	.667	0-0	.000	1-2	.500	2	6	8	4.2	1	0	0	2	0	5	3.3
Totals		2	130:47	12-21	.571	0-0	.000	12-21	.571	11	35	46	4.2	11	3	6	9	3	36	3.3

Player Averages

Games Played	Minutes/game	Points/game	FG Pct	3FG Pct	FT Pct	Rebounds/game	Assists/game	Turnovers/game	Assist/Turnover ratio	Steals/game	Blocks/game
11	11.9	3.3	57.1	0.0	57.1	4.2	0.3	0.5	0.5	0.3	0.8

TAC, Adhel

				Field Goals		3-Point		F-Throws		Rebounds									Scoring	
SEASON	TEAM	GP-GS	MIN/AVG	FG-FGA	FG%	3FG-3FGA	3FG%	FT-FTA	FT%	OFF	DEF	TOT	AVG	PF-FO	A	TO	BLK	STL	PTS	AVG
2024-25	SC	23-0	87/3.8	13-31	.419	0-0	.000	10-16	.625	15	22	37	1.6	20-0	1	5	2	2	36	1.6
2025-26	SC	11-2	131/11.9	12-21	.571	0-0	.000	12-21	.571	11	35	46	4.2	11-0	3	6	9	3	36	3.3
TOTAL		34-2	218/6.4	25-52	.481	0-0	.000	22-37	.595	26	57	83	2.4	31-0	4	11	11	5	72	2.1

PLAYER GAME-BY-GAME AND CAREER STATS

#24 MCDOWELL, Ayla

Opponent	Date	GS	MIN	Total		3-Pointers		Free throws		Rebounds											
				FG-FGA	PCT	3FG-3FGA	PCT	FT-FTA	PCT	OFF	DEF	TOT	AVG	PF	A	TO	BLK	STL	PTS	AVG	
Grand Canyon	11/03/2025		17:29	3-5	.600	0-1	.000	3-4	.750	1	1	2	2.0	2	0	2	0	1	9	9.0	
Bowling Green	11/07/2025		22:47	3-5	.600	2-3	.667	3-4	.750	1	2	3	2.5	1	1	2	0	2	11	10.0	
Clemson	11/11/2025		04:09	0-0	.000	0-0	.000	0-0	.000	0	1	1	2.0	0	0	0	0	0	0	6.7	
vs Southern California	11/15/2025		03:33	0-1	.000	0-1	.000	0-0	.000	0	0	0	1.5	0	0	0	0	0	0	5.0	
Winthrop	11/19/2025		25:43	3-4	.750	0-1	.000	1-1	1.000	2	2	4	2.0	0	1	0	0	1	7	5.4	
Queens (NC)	11/23/2025		16:45	1-4	.250	1-4	.250	4-4	1.000	2	3	5	2.5	1	1	0	1	1	7	5.7	
vs Duke	11/26/2025		01:31	0-1	.000	0-0	.000	0-0	.000	0	0	0	2.1	0	0	0	0	0	0	4.9	
vs Texas	11/27/2025		05:12	0-3	.000	0-1	.000	0-0	.000	1	0	1	2.0	0	0	0	0	0	0	4.3	
at Louisville	12/04/2025		08:42	1-2	.500	1-1	1.000	0-0	.000	2	0	2	2.0	1	1	1	0	0	3	4.1	
N.C. Central	12/07/2025		26:56	5-9	.556	5-7	.714	1-2	.500	0	2	2	2.0	2	0	3	0	0	16	5.3	
Penn St.	12/14/2025		20:33	2-5	.400	0-2	.000	0-0	.000	3	1	4	2.2	1	0	0	0	0	4	5.2	
at South Fla.	12/18/2025		19:50	1-6	.167	1-5	.200	0-2	.000	1	0	1	2.1	2	0	0	0	3	3	5.0	
Totals			0 173:10	19-45	.422	10-26	.385	12-17	.706	13	12	25	2.1	10	4	8	1	8	60	5.0	

Player Averages

Games Played	Minutes/ game	Points/ game	FG Pct	3FG Pct	FT Pct	Rebounds/ game	Assists/ game	Turnovers/ game	Assist/Turnover ratio	Steals/ game	Blocks/ game
12	14.4	5.0	42.2	38.5	70.6	2.1	0.3	0.7	0.5	0.7	0.1

#25 JOHNSON, Raven

Opponent	Date	GS	MIN	Total		3-Pointers		Free throws		Rebounds											
				FG-FGA	PCT	3FG-3FGA	PCT	FT-FTA	PCT	OFF	DEF	TOT	AVG	PF	A	TO	BLK	STL	PTS	AVG	
Grand Canyon	11/03/2025	*	25:48	4-6	.667	3-5	.600	0-0	.000	0	8	8	8.0	2	7	1	0	3	11	11.0	
Bowling Green	11/07/2025	*	23:00	4-7	.571	1-2	.500	2-2	1.000	0	5	5	6.5	2	11	2	0	3	11	11.0	
Clemson	11/11/2025	*	30:02	1-5	.200	0-0	.000	0-0	.000	0	1	1	4.7	1	2	2	1	0	2	8.0	
vs Southern California	11/15/2025	*	37:41	6-12	.500	2-3	.667	0-0	.000	4	7	11	6.3	2	4	2	2	0	14	9.5	
Winthrop	11/19/2025	*	21:20	1-4	.250	0-3	.000	1-2	.500	0	4	4	5.8	2	10	1	1	0	3	8.2	
Queens (NC)	11/23/2025	*	22:09	5-6	.833	2-2	1.000	0-0	.000	0	2	2	5.2	2	7	2	2	3	12	8.8	
vs Duke	11/26/2025	*	25:45	3-8	.375	0-2	.000	4-5	.800	3	2	5	5.1	3	6	1	0	0	10	9.0	
vs Texas	11/27/2025	*	35:13	3-6	.500	0-0	.000	1-2	.500	0	0	0	4.5	0	6	3	1	2	7	8.8	
at Louisville	12/04/2025	*	38:18	4-7	.571	1-2	.500	2-2	1.000	1	3	4	4.4	2	8	1	1	0	11	9.0	
N.C. Central	12/07/2025	*	29:24	2-9	.222	1-5	.200	2-2	1.000	1	2	3	4.3	0	5	3	1	6	7	8.8	
Penn St.	12/14/2025	*	31:21	6-8	.750	1-3	.333	2-2	1.000	1	6	7	4.5	2	4	0	0	3	15	9.4	
at South Fla.	12/18/2025	*	24:09	5-7	.714	1-2	.500	0-0	.000	2	2	4	4.5	2	6	1	1	3	11	9.5	
Totals		12	344:09	44-85	.518	12-29	.414	14-17	.824	12	42	54	4.5	20	76	19	10	23	114	9.5	

Player Averages

Games Played	Minutes/ game	Points/ game	FG Pct	3FG Pct	FT Pct	Rebounds/ game	Assists/ game	Turnovers/ game	Assist/Turnover ratio	Steals/ game	Blocks/ game
12	28.7	9.5	51.8	41.4	82.4	4.5	6.3	1.6	4.0	1.9	0.8

JOHNSON, Raven

				Field Goals		3-Point		F-Throws		Rebounds									Scoring	
SEASON	TEAM	GP-GS	MIN/AVG	FG-FGA	FG%	3FG-3FGA	3FG%	FT-FTA	FT%	OFF	DEF	TOT	AVG	PF-FO	A	TO	BLK	STL	PTS	AVG
2021-22	SC	2-0	8/4.2	0-1	.000	0-0	.000	0-0	.000	0	1	1	0.5	0-0	0	1	0	0	0	0.0
2022-23	SC	36-3	674/18.7	60-163	.368	14-58	.241	17-26	.654	20	74	94	2.6	38-0	123	52	13	40	151	4.2
2023-24	SC	37-35	1034/27.9	120-271	.443	28-80	.350	30-49	.612	37	156	193	5.2	44-0	179	58	7	78	298	8.1
2024-25	SC	39-39	944/24.2	76-217	.350	23-78	.295	15-22	.682	49	125	174	4.5	35-0	108	39	24	54	190	4.9
2025-26	SC	12-12	344/28.7	44-85	.518	12-29	.414	14-17	.824	12	42	54	4.5	20-0	76	19	10	23	114	9.5
TOTAL		126-89	3005/23.9	300-737	.407	77-245	.314	76-114	.667	118	398	516	4.1	137-0	486	169	54	195	753	6.0

PLAYER GAME-BY-GAME AND CAREER STATS

#30 DAUDA, Maryam

Opponent	Date	GS	MIN	Total		3-Pointers		Free throws		Rebounds										
				FG-FGA	PCT	3FG-3FGA	PCT	FT-FTA	PCT	OFF	DEF	TOT	AVG	PF	A	TO	BLK	STL	PTS	AVG
Grand Canyon	11/03/2025		09:58	0-0	.000	0-0	.000	0-0	.000	0	2	2	2.0	1	0	0	0	0	0	0.0
Bowling Green	11/07/2025		20:53	2-3	.667	0-0	.000	5-6	.833	4	4	8	5.0	1	0	2	1	1	9	4.5
Clemson	11/11/2025		15:59	1-4	.250	0-1	.000	0-0	.000	3	4	7	5.7	1	0	1	1	1	2	3.7
vs Southern California	11/15/2025		06:53	1-2	.500	0-0	.000	0-0	.000	2	1	3	5.0	1	0	1	1	1	2	3.3
Winthrop	11/19/2025		11:43	0-2	.000	0-1	.000	0-2	.000	0	1	1	4.2	2	1	1	1	0	0	2.6
Queens (NC)	11/23/2025		16:45	4-7	.571	0-2	.000	1-2	.500	0	5	5	4.3	2	0	2	1	0	9	3.7
vs Duke	11/26/2025		10:35	0-1	.000	0-0	.000	0-0	.000	2	4	6	4.6	3	0	0	0	0	0	3.1
vs Texas	11/27/2025		02:09	0-0	.000	0-0	.000	0-0	.000	0	0	0	4.0	0	0	1	0	0	0	2.8
N.C. Central	12/07/2025		18:15	2-6	.333	0-2	.000	2-2	1.000	3	4	7	4.3	0	2	0	3	0	6	3.1
Penn St.	12/14/2025		18:12	1-2	.500	0-0	.000	1-4	.250	3	0	3	4.2	1	0	1	0	1	3	3.1
at South Fla.	12/18/2025		19:21	0-2	.000	0-2	.000	0-0	.000	0	7	7	4.5	1	1	2	1	0	0	2.8
Totals		0	150:43	11-29	.379	0-8	.000	9-16	.563	17	32	49	4.5	13	4	11	9	4	31	2.8

Player Averages

Games Played	Minutes/ game	Points/ game	FG Pct	3FG Pct	FT Pct	Rebounds/ game	Assists/ game	Turnovers/ game	Assist/Turnover ratio	Steals/ game	Blocks/ game
11	13.7	2.8	37.9	0.0	56.3	4.5	0.4	1.0	0.4	0.4	0.8

DAUDA, Maryam

				Field Goals		3-Point		F-Throws		Rebounds				Scoring						
SEASON	TEAM	GP-GS	MIN/AVG	FG-FGA	FG%	3FG-3FGA	3FG%	FT-FTA	FT%	OFF	DEF	TOT	AVG	PF-FO	A	TO	BLK	STL	PTS	AVG
2022-23	AR	35-0	386/11.0	47-112	.420	6-24	.250	23-31	.742	45	49	94	2.7	64-0	23	42	22	11	123	3.5
2023-24	AR	33-33	947/28.7	121-266	.455	29-91	.319	62-82	.756	79	130	209	6.3	96-1	41	67	74	24	333	10.1
2024-25	SC	34-0	217/6.4	18-56	.321	6-24	.250	27-36	.750	26	39	65	1.9	29-0	4	14	5	8	69	2.0
2025-26	SC	11-0	151/13.7	11-29	.379	0-8	.000	9-16	.563	17	32	49	4.5	13-0	4	11	9	4	31	2.8
TOTAL FOR SC		45-0	368/8.2	29-85	.341	6-32	.188	36-52	.692	43	71	114	2.5	42-0	8	25	14	12	100	2.2
TOTAL		113-33	1701/15.1	197-463	.425	41-147	.279	121-165	.733	167	250	417	3.7	202-1	72	134	110	47	556	4.9

#44 MAKEER, Agot

Opponent	Date	GS	MIN	Total		3-Pointers		Free throws		Rebounds										
				FG-FGA	PCT	3FG-3FGA	PCT	FT-FTA	PCT	OFF	DEF	TOT	AVG	PF	A	TO	BLK	STL	PTS	AVG
Grand Canyon	11/03/2025		19:06	1-3	.333	1-2	.500	2-2	1.000	0	2	2	2.0	4	2	3	3	0	5	5.0
Bowling Green	11/07/2025		15:45	4-6	.667	1-2	.500	3-5	.600	1	2	3	2.5	0	0	2	1	1	12	8.5
Clemson	11/11/2025		19:13	2-4	.500	2-3	.667	0-0	.000	0	4	4	3.0	3	0	1	1	0	6	7.7
vs Southern California	11/15/2025		17:03	2-6	.333	0-2	.000	0-0	.000	1	3	4	3.3	1	1	2	0	1	4	6.8
Winthrop	11/19/2025		21:17	6-10	.600	0-1	.000	0-0	.000	3	4	7	4.0	2	4	0	0	2	12	7.8
Queens (NC)	11/23/2025		19:49	1-5	.200	0-4	.000	2-2	1.000	0	3	3	3.8	1	1	1	1	1	4	7.2
vs Duke	11/26/2025		16:24	2-6	.333	0-1	.000	0-0	.000	1	3	4	3.9	1	1	0	0	0	4	6.7
vs Texas	11/27/2025		03:17	0-1	.000	0-1	.000	0-0	.000	0	2	2	3.6	1	0	0	0	0	0	5.9
Totals		0	131:54	18-41	.439	4-16	.250	7-9	.778	6	23	29	3.6	13	9	9	6	5	47	5.9

Player Averages

Games Played	Minutes/ game	Points/ game	FG Pct	3FG Pct	FT Pct	Rebounds/ game	Assists/ game	Turnovers/ game	Assist/Turnover ratio	Steals/ game	Blocks/ game
8	16.5	5.9	43.9	25.0	77.8	3.6	1.1	1.1	1.0	0.6	0.8

2025-26 SOUTH CAROLINA GAME-BY-GAME STATS

			Total		3-Pointers		Free throws		Rebounds											
Opponent	Date	Score		FG-FGA	PCT	3FG-3FGA	PCT	FT-FTA	PCT	OFF	DEF	TOT	AVG	PF	A	TO	BLK	STL	PTS	AVG
Grand Canyon	11/03/2025	94-54	W	34-57	.596	9-19	.474	17-25	.680	5	33	38	38.0	21	19	11	6	6	94	94.0
Bowling Green	11/07/2025	114-47	W	42-66	.636	6-14	.429	24-30	.800	16	37	53	45.5	9	26	14	11	9	114	104.0
Clemson	11/11/2025	65-37	W	26-58	.448	5-9	.556	8-10	.800	11	37	48	46.3	10	11	12	10	3	65	91.0
vs Southern California	11/15/2025	69-52	W	29-71	.408	4-10	.400	7-12	.583	21	35	56	48.8	14	16	17	7	7	69	85.5
Winthrop	11/19/2025	106-56	W	43-67	.642	5-17	.294	15-24	.625	18	28	46	48.2	13	25	9	7	6	106	89.6
Queens (NC)	11/23/2025	121-49	W	43-65	.662	8-20	.400	27-34	.794	10	41	51	48.7	12	26	11	12	14	121	94.8
vs Duke	11/26/2025	83-66	W	35-74	.473	1-10	.100	12-16	.750	15	28	43	47.9	13	18	7	3	9	83	93.1
vs Texas	11/27/2025	64-66	L	25-58	.431	2-7	.286	12-16	.750	11	21	32	45.9	13	17	13	5	7	64	89.5
at Louisville	12/04/2025	79-77	W	30-61	.492	8-16	.500	11-17	.647	10	24	34	44.6	10	19	12	1	4	79	88.3
N.C. Central	12/07/2025	106-42	W	34-67	.507	11-21	.524	27-34	.794	22	23	45	44.6	10	19	17	10	16	106	90.1
Penn St.	12/14/2025	95-55	W	37-73	.507	6-21	.286	15-28	.536	13	30	43	44.5	10	20	5	5	17	95	90.5
at South Fla.	12/18/2025	103-44	W	44-70	.629	4-15	.267	11-18	.611	10	35	45	44.5	14	20	12	8	17	103	91.6
Total		1099		422-787	.536	69-179	.385	186-264	.705	162	372	534	44.5	149	236	140	85	115	1099	91.6
Opponents		645		246-775	.317	66-262	.252	87-125	.696	160	226	386	32.2	225	130	222	31	55	645	53.8

South Carolina Averages

Games Played	Points/game	FG Pct	3FG Pct	FT Pct	Rebounds/game	Assists/game	Turnovers/game	Assist/Turnover ratio	Steals/game	Blocks/game
12	91.6	53.6	38.5	70.5	44.5	19.7	11.7	1.7	9.6	7.1

2025-26 OPPONENT GAME-BY-GAME STATS

			Total		3-Pointers		Free throws		Rebounds											
Opponent	Date	Score		FG-FGA	PCT	3FG-3FGA	PCT	FT-FTA	PCT	OFF	DEF	TOT	AVG	PF	A	TO	BLK	STL	PTS	AVG
Grand Canyon	11/03/2025	94-54	W	17-62	.274	7-34	.206	13-17	.765	12	19	31	31.0	26	6	17	3	3	54	54.0
Bowling Green	11/07/2025	114-47	W	18-74	.243	6-26	.231	5-6	.833	17	8	25	28.0	20	9	18	2	11	47	50.5
Clemson	11/11/2025	65-37	W	14-61	.230	5-33	.152	4-4	1.000	10	21	31	29.0	14	9	10	1	5	37	46.0
vs Southern California	11/15/2025	69-52	W	22-67	.328	1-14	.071	7-10	.700	10	22	32	29.8	13	15	13	7	5	52	47.5
Winthrop	11/19/2025	106-56	W	21-66	.318	7-21	.333	7-9	.778	15	9	24	28.6	20	8	15	0	2	56	49.2
Queens (NC)	11/23/2025	121-49	W	16-70	.229	9-28	.321	8-10	.800	12	13	25	28.0	25	11	21	1	5	49	49.2
vs Duke	11/26/2025	83-66	W	24-61	.393	8-20	.400	10-13	.769	10	25	35	29.0	12	17	16	4	1	66	51.6
vs Texas	11/27/2025	64-66	L	25-60	.417	1-6	.167	15-20	.750	16	23	39	30.3	18	15	15	5	8	66	53.4
at Louisville	12/04/2025	79-77	W	31-65	.477	9-23	.391	6-10	.600	11	23	34	30.7	16	11	12	1	3	77	56.0
N.C. Central	12/07/2025	106-42	W	16-54	.296	6-19	.316	4-7	.571	15	13	28	30.4	24	9	36	2	4	42	54.6
Penn St.	12/14/2025	95-55	W	23-73	.315	5-26	.192	4-10	.400	22	29	51	32.3	20	10	26	2	3	55	54.6
at South Fla.	12/18/2025	103-44	W	19-62	.306	2-12	.167	4-9	.444	10	21	31	32.2	17	10	23	3	5	44	53.8
Total		645		246-775	.317	66-262	.252	87-125	.696	160	226	386	32.2	225	130	222	31	55	645	53.8
South Carolina		1099		422-787	.536	69-179	.385	186-264	.705	162	372	534	44.5	149	236	140	85	115	1099	91.6

Opponents Averages

Games Played	Points/game	FG Pct	3FG Pct	FT Pct	Rebounds/game	Assists/game	Turnovers/game	Assist/Turnover ratio	Steals/game	Blocks/game
12	53.8	31.7	25.2	69.6	32.2	10.8	18.5	0.6	4.6	2.6

2025-26 SOUTH CAROLINA POINTS-REBOUNDS-ASSISTS

Opponent	Date	Score		00	1	5	8	11	15	24	25	30	44
				LATSON,TA'	MCDANIEL,M	JOHNSON,TE	EDWARDS,JO	OKOT,MADIN	TAC,ADHEL	MCDOWELL,A	JOHNSON,RA	DAUDA,MARY	MAKEER,AGO
Grand Canyon	11/03/2025	94-54	W	20-1-4	3-0-2	19-5-3	13-5-1	12-4-0	2-6-0	9-2-0	11-8-7	0-2-0	5-2-2
Bowling Green	11/07/2025	114-47	W	17-4-4	DNP	14-7-3	24-4-3	13-11-2	3-2-2	11-3-1	11-5-11	9-8-0	12-3-0
Clemson	11/11/2025	65-37	W	12-8-3	DNP	13-2-3	18-8-2	12-12-1	0-3-0	0-1-0	2-1-2	2-7-0	6-4-0
vs Southern California	11/15/2025	69-52	W	12-4-2	DNP	14-4-5	17-10-4	6-15-0	DNP	0-0-0	14-11-4	2-3-0	4-4-1
Winthrop	11/19/2025	106-56	W	24-5-4	DNP	9-1-1	22-5-1	23-11-3	6-5-0	7-4-1	3-4-10	0-1-1	12-7-4
Queens (NC)	11/23/2025	121-49	W	24-2-5	2-1-3	13-1-5	25-4-3	14-12-0	11-10-1	7-5-1	12-2-7	9-5-0	4-3-1
vs Duke	11/26/2025	83-66	W	12-1-2	5-1-1	5-1-0	22-6-6	23-13-2	2-1-0	0-0-0	10-5-6	0-6-0	4-4-1
vs Texas	11/27/2025	64-66	L	16-4-2	0-0-2	11-0-3	16-4-3	12-11-1	2-4-0	0-1-0	7-0-6	0-0-0	0-2-0
at Louisville	12/04/2025	79-77	W	9-1-5	0-1-0	20-7-3	12-5-0	23-13-2	1-1-0	3-2-1	11-4-8	DNP	DNP
N.C. Central	12/07/2025	106-42	W	32-4-2	8-3-3	DNP	25-10-6	10-9-1	2-3-0	16-2-0	7-3-5	6-7-2	DNP
Penn St.	12/14/2025	95-55	W	18-6-8	9-4-2	15-6-1	29-4-5	DNP	2-3-0	4-4-0	15-7-4	3-3-0	DNP
at South Fla.	12/18/2025	103-44	W	15-3-4	7-2-5	16-4-2	34-5-1	12-10-1	5-8-0	3-1-0	11-4-6	0-7-1	DNP

2025-26 VS. RANKED OPPONENTS

Game Records

Record	Overall	Home	Away	Neutral
ALL GAMES	2-1	0-0	1-0	1-1
CONFERENCE	0-0	0-0	0-0	0-0
NON-CONFERENCE	2-1	0-0	1-0	1-1

Score by Periods

Team	1st	2nd	3rd	4th	OT	TOT
South Carolina	66	40	62	44	0	212
Opponents	64	38	51	42	0	195

Team Box Score

No.	Player				Total		3-Point		F-Throw		Rebounds											
		GP-GS	MIN	AVG	FG-FGA	FG%	3FG-3FGA	3FG%	FT-FTA	FT%	OFF	DEF	TOT	AVG	PF	DQ	A	TO	BLK	STL	PTS	AVG
5	JOHNSON, Tessa	3-3	111:27	37.2	16-34	.471	7-14	.500	6-6	1.000	3	8	11	3.7	6	0	11	6	0	1	45	15.0
8	EDWARDS, Joyce	3-3	101:02	33.7	19-44	.432	1-1	1.000	6-14	.429	6	13	19	6.3	7	0	7	9	3	7	45	15.0
11	OKOT, Madina	3-3	101:28	33.8	18-32	.563	0-0	.000	5-9	.556	9	30	39	13.0	9	1	3	10	3	2	41	13.7
00	LATSON, Ta'Niya	3-3	98:28	32.8	13-35	.371	2-5	.400	9-10	.900	6	3	9	3.0	6	0	9	5	0	3	37	12.3
25	JOHNSON, Raven	3-3	111:12	37.1	13-25	.520	3-5	.600	3-4	.750	5	10	15	5.0	4	0	18	6	4	2	32	10.7
44	MAKEER, Agot	2-0	20:20	10.2	2-7	.286	0-3	.000	0-0	.000	1	5	6	3.0	2	0	1	2	0	1	4	2.0
15	TAC, Adhel	2-0	11:21	5.7	1-2	.500	0-0	.000	1-2	.500	1	4	5	2.5	1	0	0	0	2	0	3	1.5
30	DAUDA, Maryam	2-0	09:02	4.5	1-2	.500	0-0	.000	0-0	.000	2	1	3	1.5	1	0	0	2	1	1	2	1.0
24	MCDOWELL, Ayla	3-0	17:27	5.8	1-6	.167	1-3	.333	0-0	.000	3	0	3	1.0	1	0	1	1	0	0	3	1.0
1	MCDANIEL, Maddy	2-0	18:13	9.1	0-3	.000	0-2	.000	0-0	.000	0	1	1	0.5	0	0	2	0	0	1	0	0.0
Team											6	5	11				1					
Total		3	600		84-190	.442	14-33	.424	30-45	.667	42	80	122	40.7	37	1	52	42	13	18	212	70.7
Opponents		3	600		78-192	.406	11-43	.256	28-40	.700	37	68	105	35.0	47	0	41	40	13	16	195	65.0

Team Results

Date	Opponent		Score	Att.
11/15/2025	vs Southern California	W	69-52	8150
11/27/2025	vs Texas	L	64-66	1950
12/04/2025	at Louisville	W	79-77	10012

LAST 5 GAMES

Game Records

Record	Overall	Home	Away	Neutral
ALL GAMES	4-1	2-0	2-0	0-1
CONFERENCE	0-0	0-0	0-0	0-0
NON-CONFERENCE	4-1	2-0	2-0	0-1

Score by Periods

Team	1st	2nd	3rd	4th	OT	TOT
South Carolina	126	92	120	109	0	447
Opponents	91	65	60	68	0	284

Team Box Score

No.	Player				Total		3-Point		F-Throw		Rebounds											
		GP-GS	MIN	AVG	FG-FGA	FG%	3FG-3FGA	3FG%	FT-FTA	FT%	OFF	DEF	TOT	AVG	PF	DQ	A	TO	BLK	STL	PTS	AVG
8	EDWARDS, Joyce	5-5	160:10	32.0	48-74	.649	2-2	1.000	18-30	.600	9	19	28	5.6	10	0	15	14	10	16	116	23.2
00	LATSON, Ta'Niya	5-5	169:16	33.9	30-68	.441	8-19	.421	22-24	.917	5	13	18	3.6	6	0	21	8	3	15	90	18.0
5	JOHNSON, Tessa	4-4	126:19	31.6	25-47	.532	8-19	.421	4-6	.667	3	14	17	4.3	6	0	9	4	0	1	62	15.5
11	OKOT, Madina	4-4	98:14	24.6	26-39	.667	0-1	.000	5-10	.500	13	30	43	10.8	8	1	5	11	3	3	57	14.3
25	JOHNSON, Raven	5-5	158:25	31.7	20-37	.541	4-12	.333	7-8	.875	5	13	18	3.6	6	0	29	8	4	14	51	10.2
24	MCDOWELL, Ayla	5-0	81:13	16.2	9-25	.360	7-16	.438	1-4	.250	7	3	10	2.0	6	0	1	4	0	3	26	5.2
1	MCDANIEL, Maddy	5-0	86:01	17.2	5-17	.294	2-6	.333	12-17	.706	3	7	10	2.0	7	0	12	1	0	7	24	4.8
15	TAC, Adhel	5-2	59:09	11.8	4-11	.364	0-0	.000	4-8	.500	6	13	19	3.8	5	0	0	2	5	1	12	2.4
30	DAUDA, Maryam	4-0	57:57	14.5	3-10	.300	0-4	.000	3-6	.500	6	11	17	4.3	2	0	3	4	4	1	9	2.3
44	MAKEER, Agot	1-0	03:17	3.3	0-1	.000	0-1	.000	0-0	.000	0	2	2	2.0	1	0	0	0	0	0	0	0.0
Team											9	8	17				3					
Total		5	1000		170-329	.517	31-80	.388	76-113	.673	66	133	199	39.8	57	1	95	59	29	61	447	89.4
Opponents		5	1000		114-314	.363	23-86	.267	33-56	.589	74	109	183	36.6	95	2	55	112	13	23	284	56.8

Team Results

Date	Opponent		Score	Att.
11/27/2025	vs Texas	L	64-66	1950
12/04/2025	at Louisville	W	79-77	10012
12/07/2025	N.C. Central	W	106-42	15677
12/14/2025	Penn St.	W	95-55	15601
12/18/2025	at South Fla.	W	103-44	3767

2025-26 OVERALL STATS

Game Records

Record	Overall	Home	Away	Neutral
ALL GAMES	11-1	7-0	2-0	2-1
CONFERENCE	0-0	0-0	0-0	0-0
NON-CONFERENCE	11-1	7-0	2-0	2-1

Score by Periods

Team	1st	2nd	3rd	4th	OT	TOT
South Carolina	293	266	278	262	0	1099
Opponents	171	162	176	136	0	645

Team Box Score

No.	Player				Total		3-Point		F-Throw		Rebounds											
		GP-GS	MIN	AVG	FG-FGA	FG%	3FG-3FGA	3FG%	FT-FTA	FT%	OFF	DEF	TOT	AVG	PF	DQ	A	TO	BLK	STL	PTS	AVG
8	EDWARDS, Joyce	12-12	362:29	30.2	106-172	.616	2-5	.400	43-68	.632	27	43	70	5.8	22	0	35	27	21	25	257	21.4
00	LATSON, Ta'Niya	12-12	370:17	30.9	75-146	.514	14-32	.438	47-57	.825	8	35	43	3.6	17	0	45	21	7	21	211	17.6
11	OKOT, Madina	11-11	271:52	24.7	70-112	.625	0-3	.000	20-29	.690	39	82	121	11.0	20	1	13	19	18	13	160	14.5
5	JOHNSON, Tessa	11-11	339:22	30.9	58-112	.518	24-52	.462	9-11	.818	7	31	38	3.5	13	0	29	15	4	4	149	13.5
25	JOHNSON, Raven	12-12	344:09	28.7	44-85	.518	12-29	.414	14-17	.824	12	42	54	4.5	20	0	76	19	10	23	114	9.5
44	MAKEER, Agot	8-0	131:54	16.5	18-41	.439	4-16	.250	7-9	.778	6	23	29	3.6	13	0	9	9	6	5	47	5.9
24	MCDOWELL, Ayla	12-0	173:10	14.4	19-45	.422	10-26	.385	12-17	.706	13	12	25	2.1	10	0	4	8	1	8	60	5.0
1	MCDANIEL, Maddy	8-0	125:19	15.7	9-24	.375	3-8	.375	13-19	.684	3	9	12	1.5	10	0	18	1	0	9	34	4.3
15	TAC, Adhel	11-2	130:47	11.9	12-21	.571	0-0	.000	12-21	.571	11	35	46	4.2	11	0	3	6	9	3	36	3.3
30	DAUDA, Maryam	11-0	150:43	13.7	11-29	.379	0-8	.000	9-16	.563	17	32	49	4.5	13	0	4	11	9	4	31	2.8
Team											19	28	47					4				
Total		12	2400		422-787	.536	69-179	.385	186-264	.705	162	372	534	44.5	149	1	236	140	85	115	1099	91.6
Opponents		12	2400		246-775	.317	66-262	.252	87-125	.696	160	226	386	32.2	225	6	130	222	31	55	645	53.8

Team Statistics

	SC	OPP
Scoring	1099	645
Points per game	91.6	53.8
Scoring margin	+37.8	-
Field goals-att	422-787	246-775
Field goal pct	.536	.317
3 point fg-att	69-179	66-262
3-point FG pct	.385	.252
3-pt FG made per game	5.8	5.5
Free throws-att	186-264	87-125
Free throw pct	.705	.696
F-Throws made per game	15.5	7.3
Rebounds	534	386
Rebounds per game	44.5	32.2
Rebounding margin	+12.3	-
Assists	236	130
Assists per game	19.7	10.8
Turnovers	140	222
Turnovers per game	11.7	18.5
Turnover margin	+6.8	-
Assist/turnover ratio	1.7	0.6
Steals	115	55
Steals per game	9.6	4.6
Blocks	85	31
Blocks per game	7.1	2.6
Winning streak	4	-
Home win streak	7	-
Attendance	111160	13779
Home games-Avg/Game	7-15880	2-6890
Neutral site-Avg/Game	-	3-4162

Team Results

Date	Opponent		Score	Att.
11/03/2025	Grand Canyon	W	94-54	15601
11/07/2025	Bowling Green	W	114-47	16649
11/11/2025	Clemson	W	65-37	16623
11/15/2025	vs Southern California	W	69-52	8150
11/19/2025	Winthrop	W	106-56	15787
11/23/2025	Queens (NC)	W	121-49	15222
11/26/2025	vs Duke	W	83-66	2386
11/27/2025	vs Texas	L	64-66	1950
12/04/2025	at Louisville	W	79-77	10012
12/07/2025	N.C. Central	W	106-42	15677
12/14/2025	Penn St.	W	95-55	15601
12/18/2025	at South Fla.	W	103-44	3767