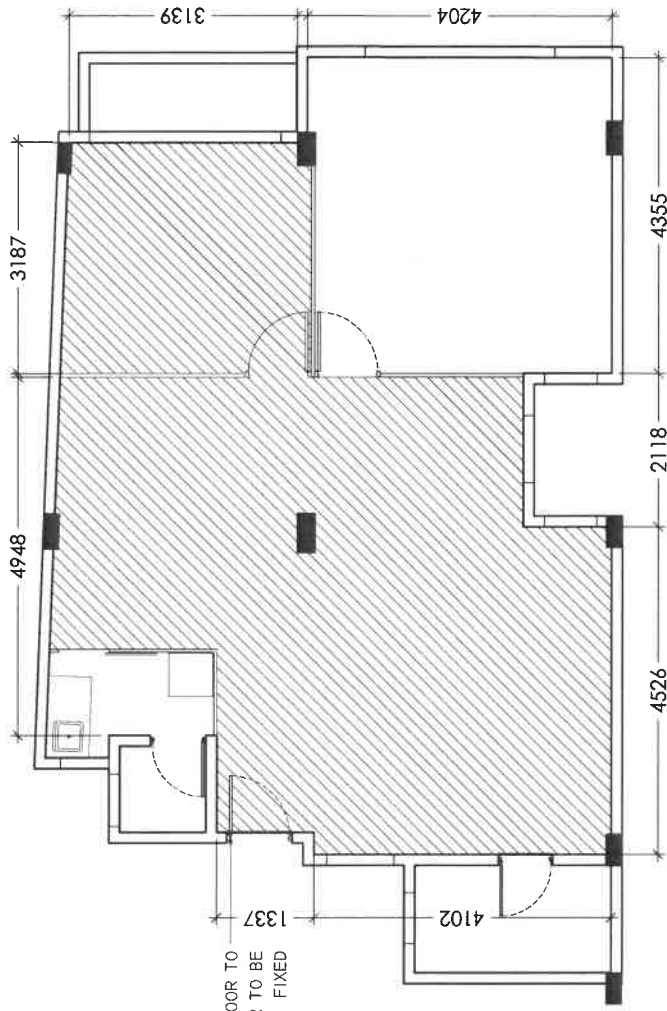


FLOOR PLANS

1. MFMC Office – H.Orchid, 9A
2. MFMC Office – H.Orchid, 9B
3. MFMC / OCM Office – H. Suez, 2nd Floor



EXISTING ENTRANCE DOOR TO
REMOVED AND NEW DOOR TO BE
FIXED

LAMINATE FLOOR FINISH
APPROX. AREA 52.1M2

MFMC OFFICE LAYOUT - 9A

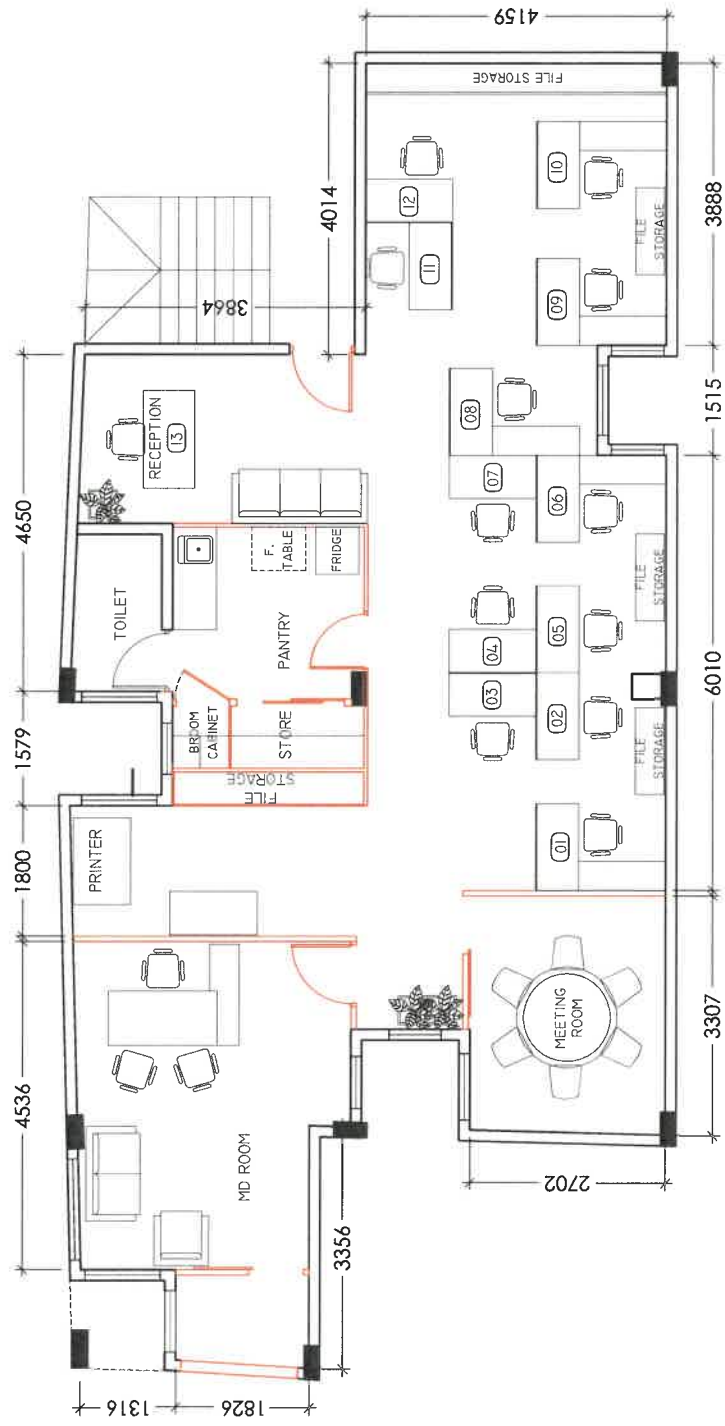
SCALE 1:100



MFMC
MALDIVES FUND
MANAGEMENT CORPORATION

9A, H. ORCHID, AMEER AHMED MAGU, MALE' 20095, MALDIVES
PHONE: 3316362

PROJECT: PARTITIONS AND INTERIOR WORKS



9B LAYOUT
SCALE 1:100

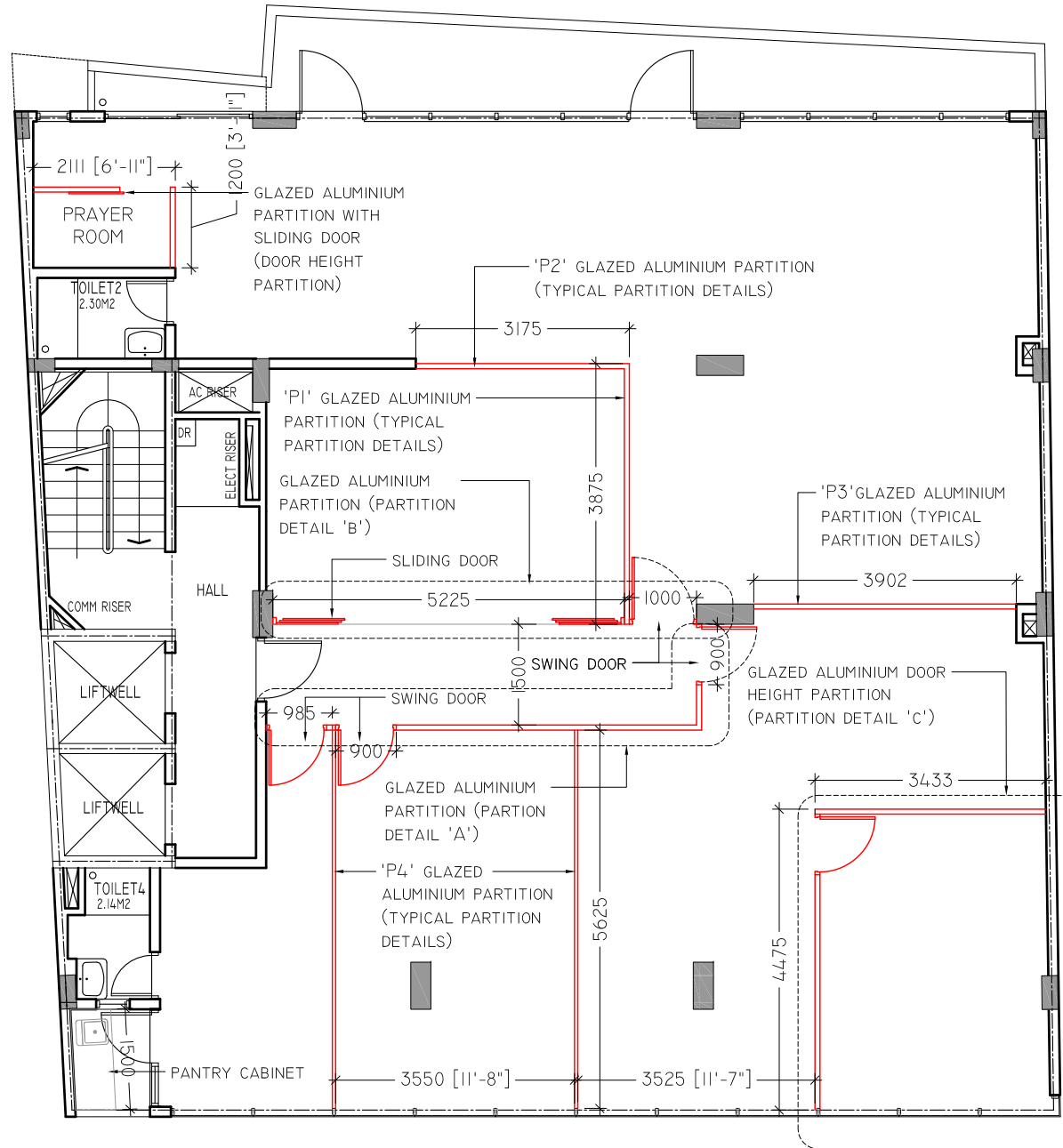


[Handwritten signature]

MFMC
MALDIVES FUND
MANAGEMENT CORPORATION

9A, H. ORCHID, AMEER AHMED MAGU, MALE' 30095, MALDIVES
PHONE: 3316362

PROJECT: PARTITIONS AND INTERIOR WORKS



H. SUEZ 2ND FLOOR - FLOOR LAYOUT

SCALE 1:100

PROJECT: H. SUEZ 2ND FLOOR PARTITION WORKS