

3" GI PIPE

144"

24"

3" GI PIPE

3" GI PIPE

3" GI PIPE

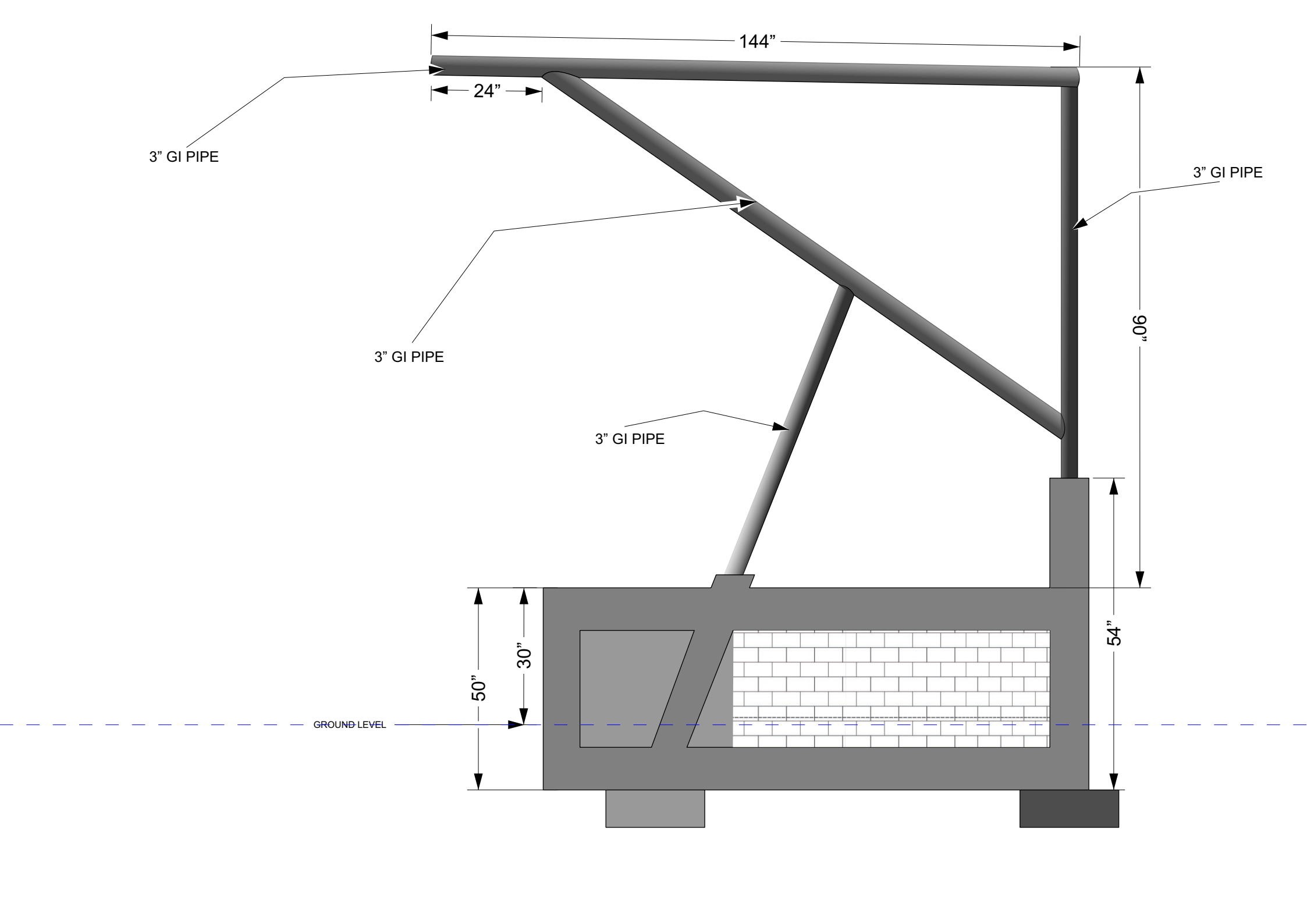
66"

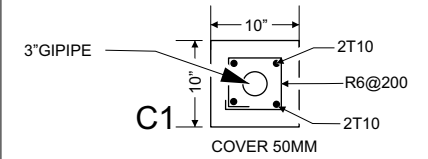
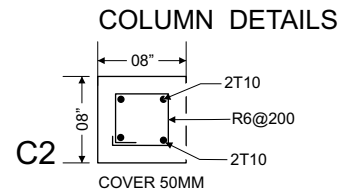
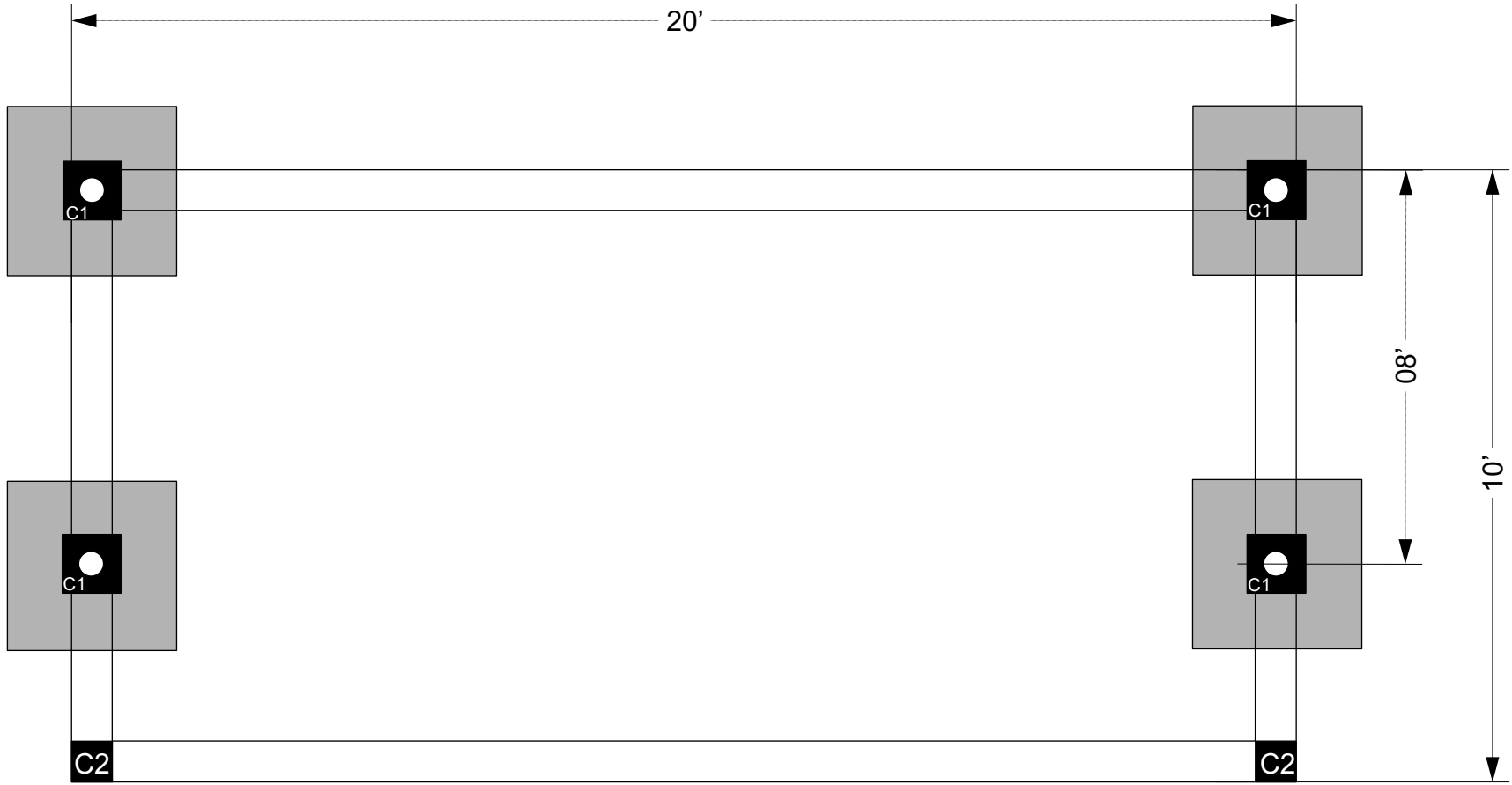
GROUND LEVEL

50"

30"

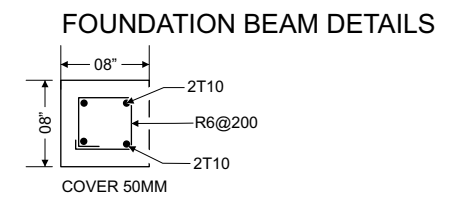
54"





FOOTING DETAILS

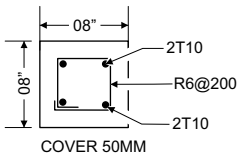
SIZE
750MM X 750MM X 300MM
REINFORCEMENT
12T10 @ 150MM C/C



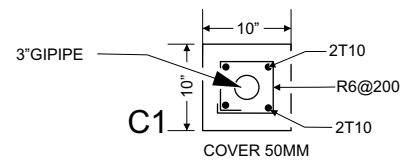
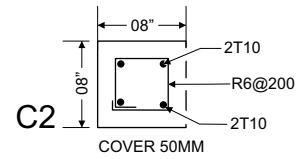
FOUNDATION & COLUMN PLAN



STAGE BEAM DETAILS



COLUMN DETAILS



STAGE BEAM PLAN

