

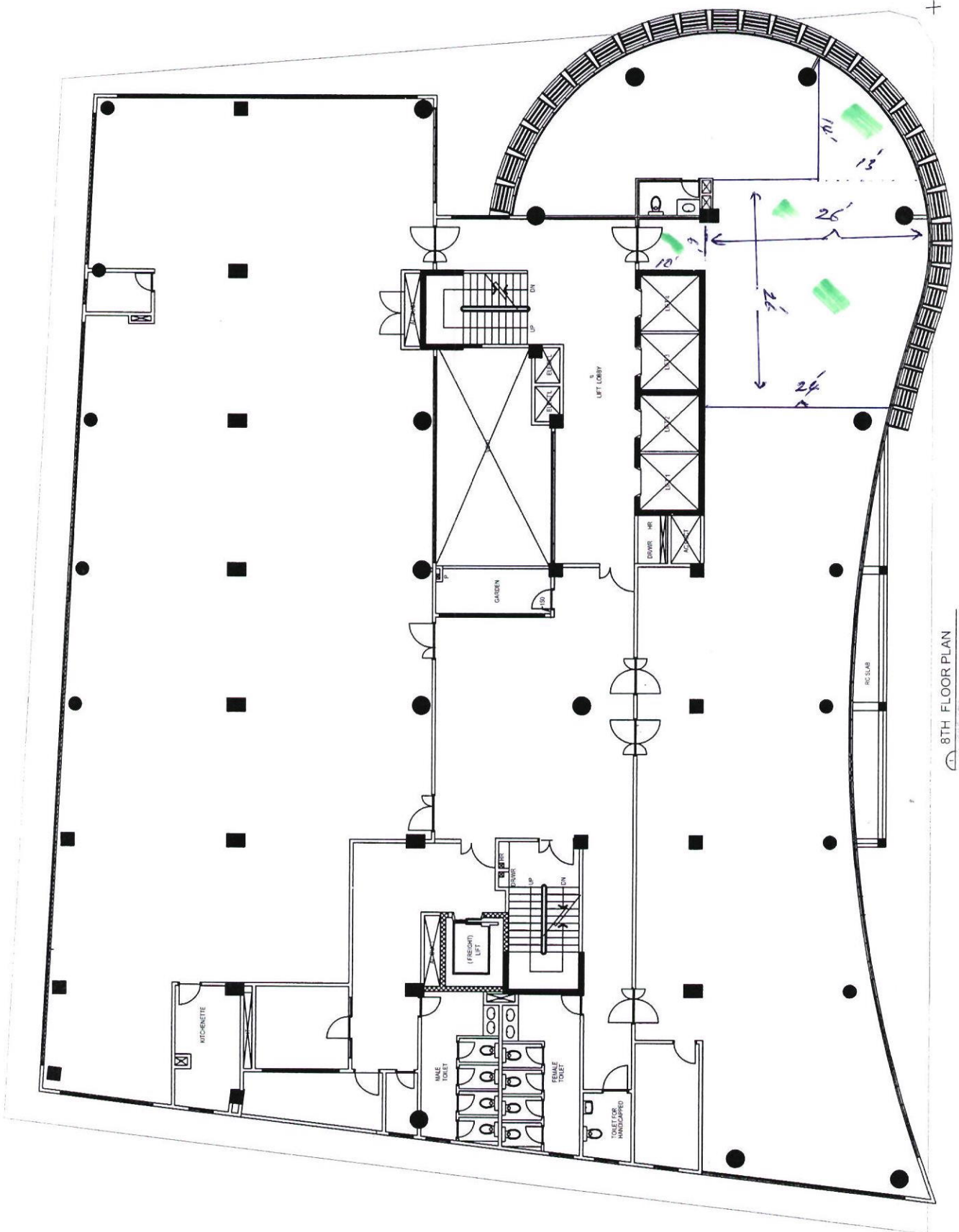


SOUTH WING: (463.31sqm)
MINISTRY OF
EDUCATION

NOTES:

- The south wing accommodates 78 people without any rooms.
- The North wing accommodates 48 people including rooms for the Minister & P.S.
- Cubicle space for Senior staffs are provided.
- A total of 126 people can be accommodated in both wings.

NORTH WING: (378.81 sqm)
MINISTRY OF
EDUCATION



8TH FLOOR PLAN
0 10 20 30 40 50