

ސަލާމަތް-2: ބަނގުލުގެ ފެންވަރު ދިނުމާ ގުޅޭގޮތުން

- 1 ބަނގުލުގެ ފެންވަރު ދިނުމާ ގުޅޭގޮތުން ބަނގުލުގެ ފެންވަރު ދިނުމާ ގުޅޭގޮތުން ބަނގުލުގެ ފެންވަރު ދިނުމާ ގުޅޭގޮތުން
- 2 (ހ) ބަނގުލުގެ ފެންވަރު ދިނުމާ ގުޅޭގޮތުން ބަނގުލުގެ ފެންވަރު ދިނުމާ ގުޅޭގޮތުން ބަނގުލުގެ ފެންވަރު ދިނުމާ ގުޅޭގޮތުން
(ށ) ބަނގުލުގެ ފެންވަރު ދިނުމާ ގުޅޭގޮތުން ބަނގުލުގެ ފެންވަރު ދިނުމާ ގުޅޭގޮތުން ބަނގުލުގެ ފެންވަރު ދިނުމާ ގުޅޭގޮތުން
- 3 (ނ) ބަނގުލުގެ ފެންވަރު ދިނުމާ ގުޅޭގޮތުން ބަނގުލުގެ ފެންވަރު ދިނުމާ ގުޅޭގޮތުން ބަނގުލުގެ ފެންވަރު ދިނުމާ ގުޅޭގޮތުން
- 4 ބަނގުލުގެ ފެންވަރު ދިނުމާ ގުޅޭގޮތުން ބަނގުލުގެ ފެންވަރު ދިނުމާ ގުޅޭގޮތުން ބަނގުލުގެ ފެންވަރު ދިނުމާ ގުޅޭގޮތުން (8-މަހުގެ ތެރޭގައި)
- 5 ބަނގުލުގެ ފެންވަރު ދިނުމާ ގުޅޭގޮތުން ބަނގުލުގެ ފެންވަރު ދިނުމާ ގުޅޭގޮތުން ބަނގުލުގެ ފެންވަރު ދިނުމާ ގުޅޭގޮތުން (1-މަހުގެ ތެރޭގައި)
- 6 ބަނގުލުގެ ފެންވަރު ދިނުމާ ގުޅޭގޮތުން ބަނގުލުގެ ފެންވަރު ދިނުމާ ގުޅޭގޮތުން ބަނގުލުގެ ފެންވަރު ދިނުމާ ގުޅޭގޮތުން
- 7 ބަނގުލުގެ ފެންވަރު ދިނުމާ ގުޅޭގޮތުން ބަނގުލުގެ ފެންވަރު ދިނުމާ ގުޅޭގޮތުން ބަނގުލުގެ ފެންވަރު ދިނުމާ ގުޅޭގޮތުން 60 (ފަށަންދެމެ)
- 8 ބަނގުލުގެ ފެންވަރު ދިނުމާ ގުޅޭގޮތުން ބަނގުލުގެ ފެންވަރު ދިނުމާ ގުޅޭގޮތުން ބަނގުލުގެ ފެންވަރު ދިނުމާ ގުޅޭގޮތުން
- 9 ބަނގުލުގެ ފެންވަރު ދިނުމާ ގުޅޭގޮތުން ބަނގުލުގެ ފެންވަރު ދިނުމާ ގުޅޭގޮތުން ބަނގުލުގެ ފެންވަރު ދިނުމާ ގުޅޭގޮތުން



اگر کسی شخص نے ایک سڑک کی تعمیر کے لیے زمین کی خریداری کی ہے تو اس شخص کو

سوال نمبر _____		
اگر کسی شخص نے ایک سڑک کی تعمیر کے لیے زمین کی خریداری کی ہے تو اس شخص کو		

سوال نمبر	پوائنٹس	سوال
1	20	<p>1. (دیکھ کر زمین کی خریداری کے لیے) 10 ایکڑ زمین کی خریداری کے لیے ایک شخص نے ایک سڑک کی تعمیر کے لیے زمین کی خریداری کی ہے۔ اس شخص کو کیا ملے گا؟</p> <p>(تعمیر کے وقت اس شخص کو پانچ لاکھ روپے کی رقم ملے گی، اس کے علاوہ اس کے پاس 20 لاکھ روپے)</p>
پاس کا جواب لکھیں		
<p>اس شخص کو _____ ملے گا۔</p> <p>اس شخص کو _____ ملے گا۔</p> <p>اس شخص کو _____ ملے گا۔</p> <p>اس شخص کو _____ ملے گا۔</p>		

سوال نمبر _____		
اگر کسی شخص نے ایک سڑک کی تعمیر کے لیے زمین کی خریداری کی ہے تو اس شخص کو		

سوال نمبر	پوائنٹس	سوال
2	10	<p>2- اگر کسی شخص نے ایک سڑک کی تعمیر کے لیے زمین کی خریداری کی ہے تو اس شخص کو</p> <p>_____ ملے گا۔</p> <p>اس شخص کو _____ ملے گا۔</p>
3	20	<p>3- اگر کسی شخص نے ایک سڑک کی تعمیر کے لیے زمین کی خریداری کی ہے تو اس شخص کو</p> <p>_____ ملے گا۔</p> <p>اس شخص کو _____ ملے گا۔</p>
پاس کا جواب لکھیں		

تجزیاتی پیمانہ کی تفصیل:			
تجزیاتی پیمانہ کی تفصیل	تجزیاتی پیمانہ کی تفصیل	تجزیاتی پیمانہ کی تفصیل	تجزیاتی پیمانہ کی تفصیل
			تجزیاتی پیمانہ کی تفصیل
			تجزیاتی پیمانہ کی تفصیل (تجزیاتی)
			تجزیاتی پیمانہ کی تفصیل (تجزیاتی)
			تجزیاتی پیمانہ کی تفصیل

تجزیاتی پیمانہ کی تفصیل (تجزیاتی)	تجزیاتی پیمانہ کی تفصیل:
تجزیاتی پیمانہ کی تفصیل:	تجزیاتی پیمانہ کی تفصیل:
تجزیاتی پیمانہ کی تفصیل:	تجزیاتی پیمانہ کی تفصیل:
تجزیاتی پیمانہ کی تفصیل:	تجزیاتی پیمانہ کی تفصیل:

تجزیاتی پیمانہ کی تفصیل

تجزیاتی پیمانہ کی تفصیل 3 اجزاء میں (تجزیاتی پیمانہ کی تفصیل) : (05 تجزیاتی)

20	20	20	تجزیاتی پیمانہ کی تفصیل
			تجزیاتی پیمانہ کی تفصیل
تجزیاتی پیمانہ کی تفصیل 3 اجزاء میں (تجزیاتی پیمانہ کی تفصیل):			

تجزیاتی پیمانہ کی تفصیل (15 تجزیاتی)

تجزیاتی پیمانہ کی تفصیل 50% تک

تجزیاتی پیمانہ کی تفصیل			
#	تجزیاتی پیمانہ کی تفصیل	تجزیاتی پیمانہ کی تفصیل	تجزیاتی پیمانہ کی تفصیل

تاریخ	تاریخ	تاریخ	تاریخ
1			
2			
3			
4			
5			
6			
			تاریخ

تاریخ	تاریخ
تاریخ	تاریخ
تاریخ	تاریخ
تاریخ	تاریخ

دستورالعمل برگزاری مسابقات علمی و فرهنگی دانش آموزان و دبیران مدارس متوسطه

ردیف (شماره)	نام مسابقه	موضوع	دسته بندی (مدرسه/کلاس)	تاریخ برگزاری
1				
2				
3				
4				
5				
6				
7				
8				
9				
10				

توضیح: نتایج این مسابقات در صورتی که در تاریخ 10 اردیبهشت ماه اعلام شود، در صورتی که نتایج آن اعلام نشود، در تاریخ 15 اردیبهشت ماه اعلام خواهد شد. این مسابقات در سطح مدارس برگزار خواهد شد و نتایج آن در سطح شهرستان اعلام خواهد شد. نتایج این مسابقات در سطح استان اعلام خواهد شد.

نام:	
آدرس:	
تاریخ برگزاری:	
نام دبیران و مدرسه:	

ސަލާމް ސަލާމް - 3: ބަލަވާ ސަލާމް ސަލާމް / ސަލާމް ސަލާމް ސަލާމް
ސަލާމް ސަލާމް ސަލާމް ސަލާމް ސަލާމް ސަލާމް ސަލާމް ސަލާމް



Annex-1

فہرست افہامیہ ناموں کے ساتھ 02 نمبر شدہ کیسوں کی فہرست

نمبر

کیسوں کی فہرست:

- 1. کیس نمبر 01 افہامیہ ناموں کے ساتھ کیسوں کی فہرست کے ساتھ 02 نمبر شدہ کیسوں کی فہرست۔
کیس نمبر 01 نمبر شدہ کیسوں کے ساتھ افہامیہ ناموں کی فہرست کے ساتھ ہونا۔
- 2. کیسوں کی فہرست کے ساتھ کیسوں کی فہرست کے ساتھ ہونا۔ کیسوں کی فہرست کے ساتھ ہونا۔
کیسوں کی فہرست کے ساتھ کیسوں کی فہرست کے ساتھ ہونا۔ کیسوں کی فہرست کے ساتھ ہونا۔
- 3. کیس نمبر 01 کے ساتھ کیسوں کی فہرست کے ساتھ ہونا۔ کیسوں کی فہرست کے ساتھ ہونا۔
کیسوں کی فہرست کے ساتھ کیسوں کی فہرست کے ساتھ ہونا۔ کیسوں کی فہرست کے ساتھ ہونا۔

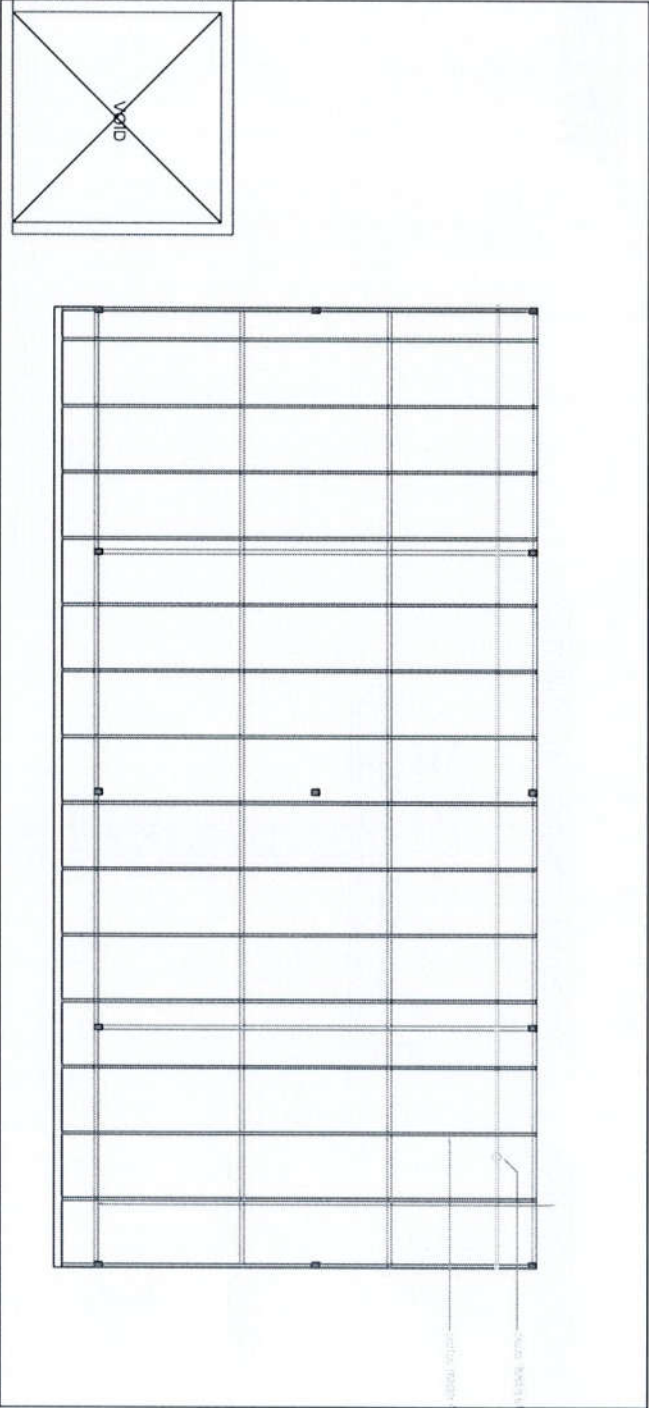
نتیجہ:

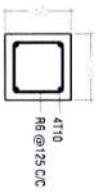
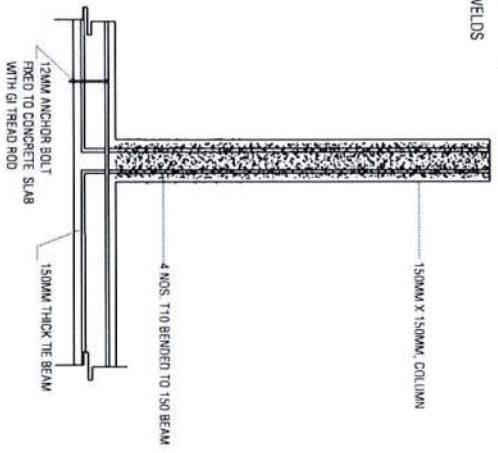
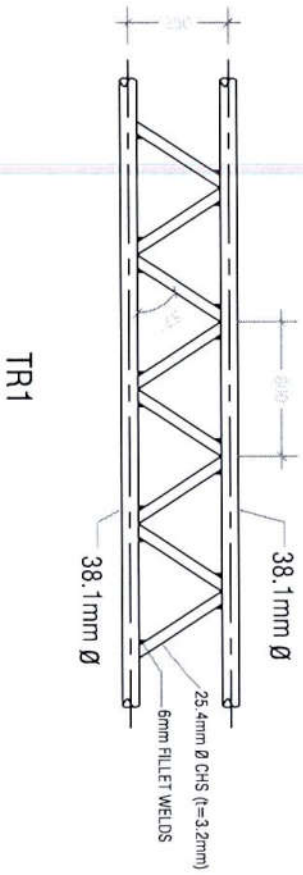
- کیسوں کی فہرست کے ساتھ ہونا۔
- کیسوں کی فہرست کے ساتھ ہونا۔
- کیسوں کی فہرست کے ساتھ ہونا۔
- کیسوں کی فہرست کے ساتھ ہونا۔
- کیسوں کی فہرست کے ساتھ ہونا۔
- کیسوں کی فہرست کے ساتھ ہونا۔



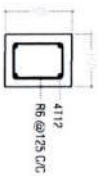
Annex-2

ROOF FRAMING PLAN SCALE 1:100

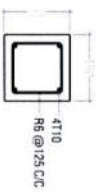




COLUMN DETAIL



TIE BEAM DETAIL



ROOF BEAM DETAIL

COLUMN STUMP CONNECTION DETAIL

DETAIL



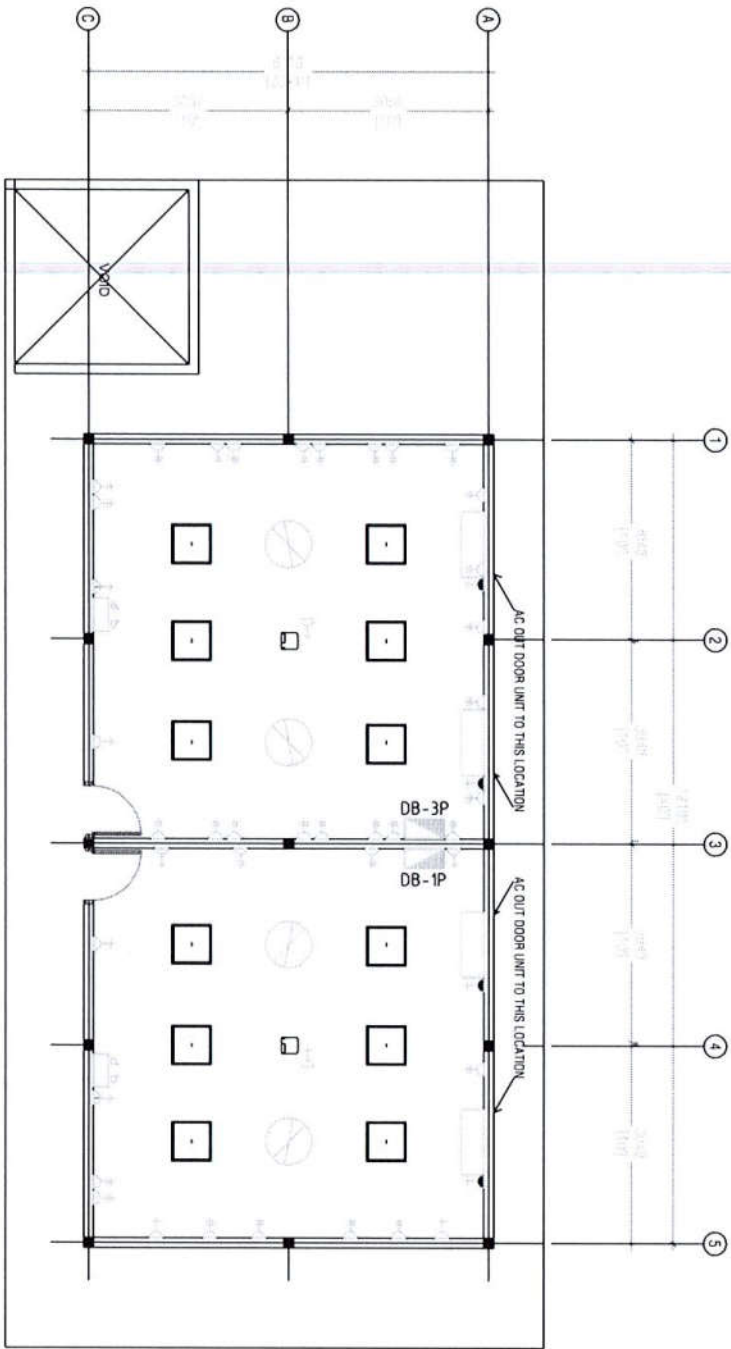
Plans :	
Elevations :	
Finish Floor F . F . L	
Area sqm:	1.65
Door no :	D1
Door :	Timber Frame Openable Door Panel with clear glass fixed in half
Frame :	38mm x 100mm Timber Frame
Hardware :	01 no. Timber Plywood Door Panel 01 no. Lock set 04 nos. Hinges 01 nos. Door Closer
Glazing :	-
Remarks :	

Note : All the measurements to be checked at site by contractor before fabrication

DOORS & WINDOWS SCHEDULE

Scale 1:50

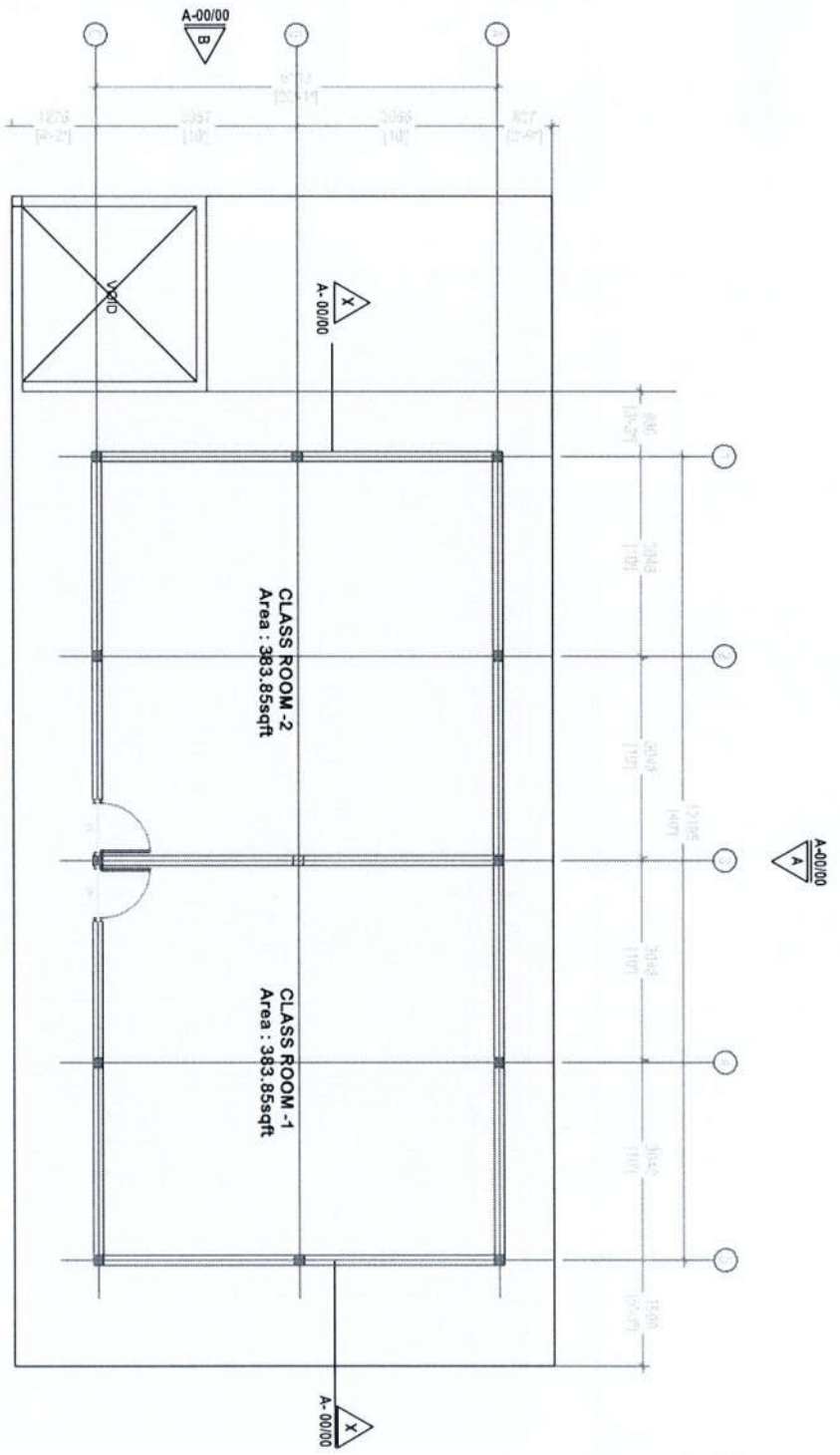




ELECTRICAL /AIR CONDITION PLAN
SCALE 1":100

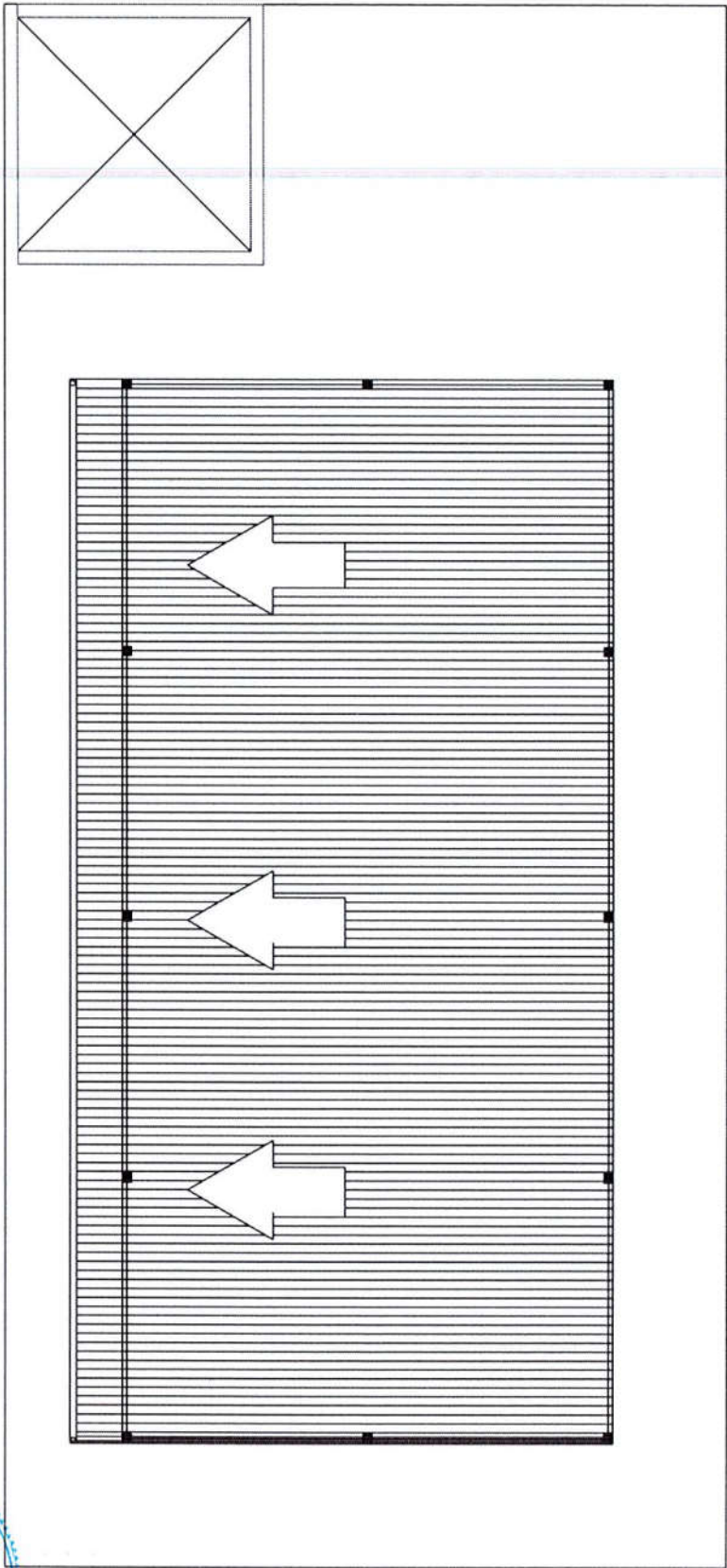
	DB-00	DISTRIBUTION BOARD
		EMERGENCY LIGHT
		18000BTU WALL MOUNT AC
		DOUBLE GANG 13A POWER OUTLET
		SINGLE GANG 13A POWER OUTLET
		15A POWER OUTLET
		3GANG SWITCH
		30" CEILING FAN
		LED LIGHT 2'X2' (4.8W)
		PROJECTOR (MINIMUM 2000 LUMENS)





TERRACE FLOOR PLAN

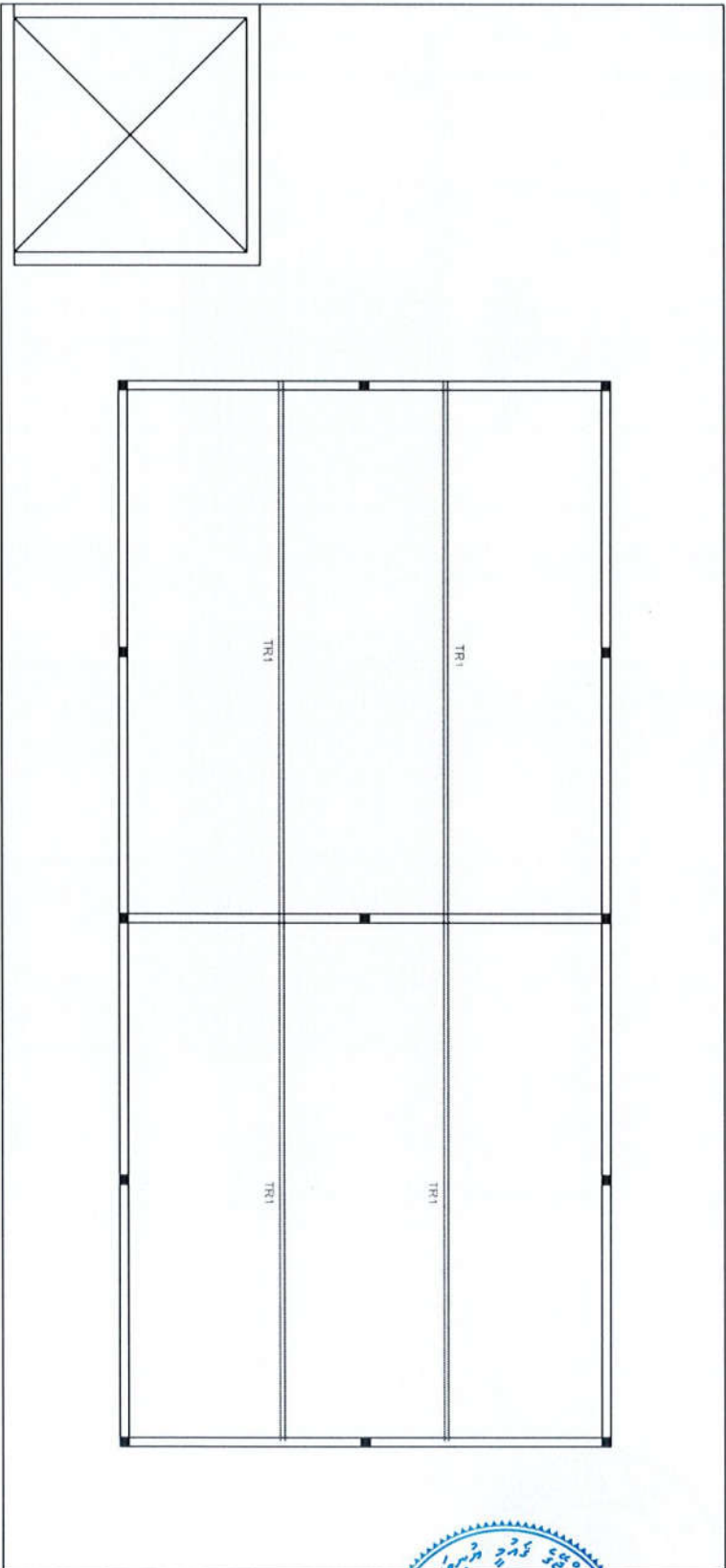
SCALE 1:100



ROOF PLAN

SCALE 1 : 100

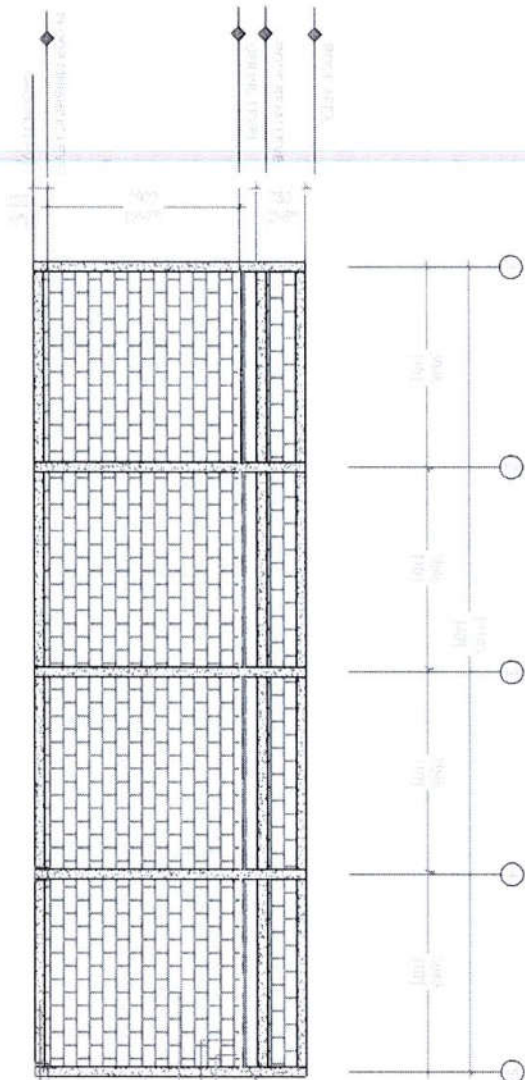




ROOF TRUSS AND BEAM PLAN

SCALE 1: 100

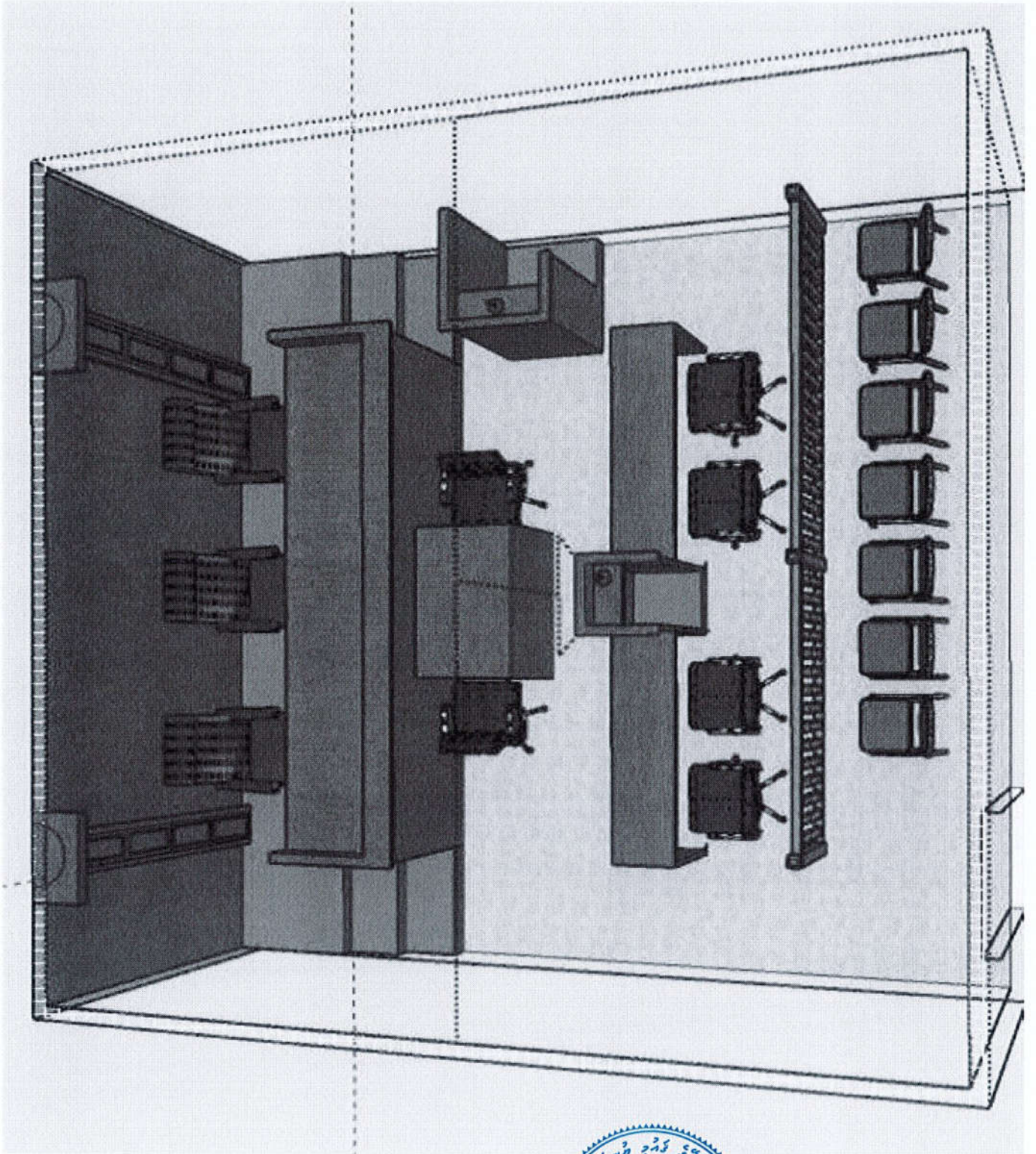


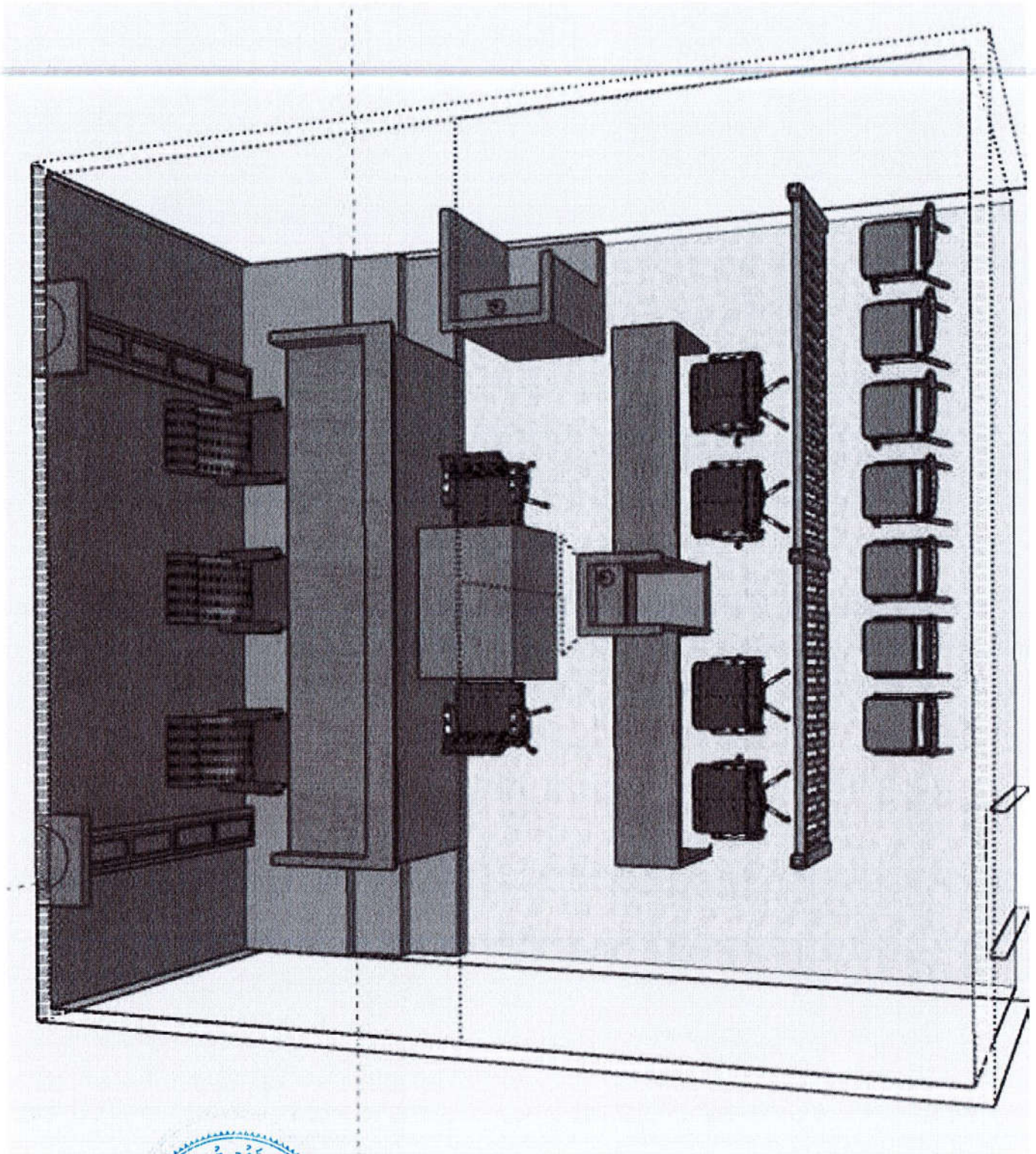


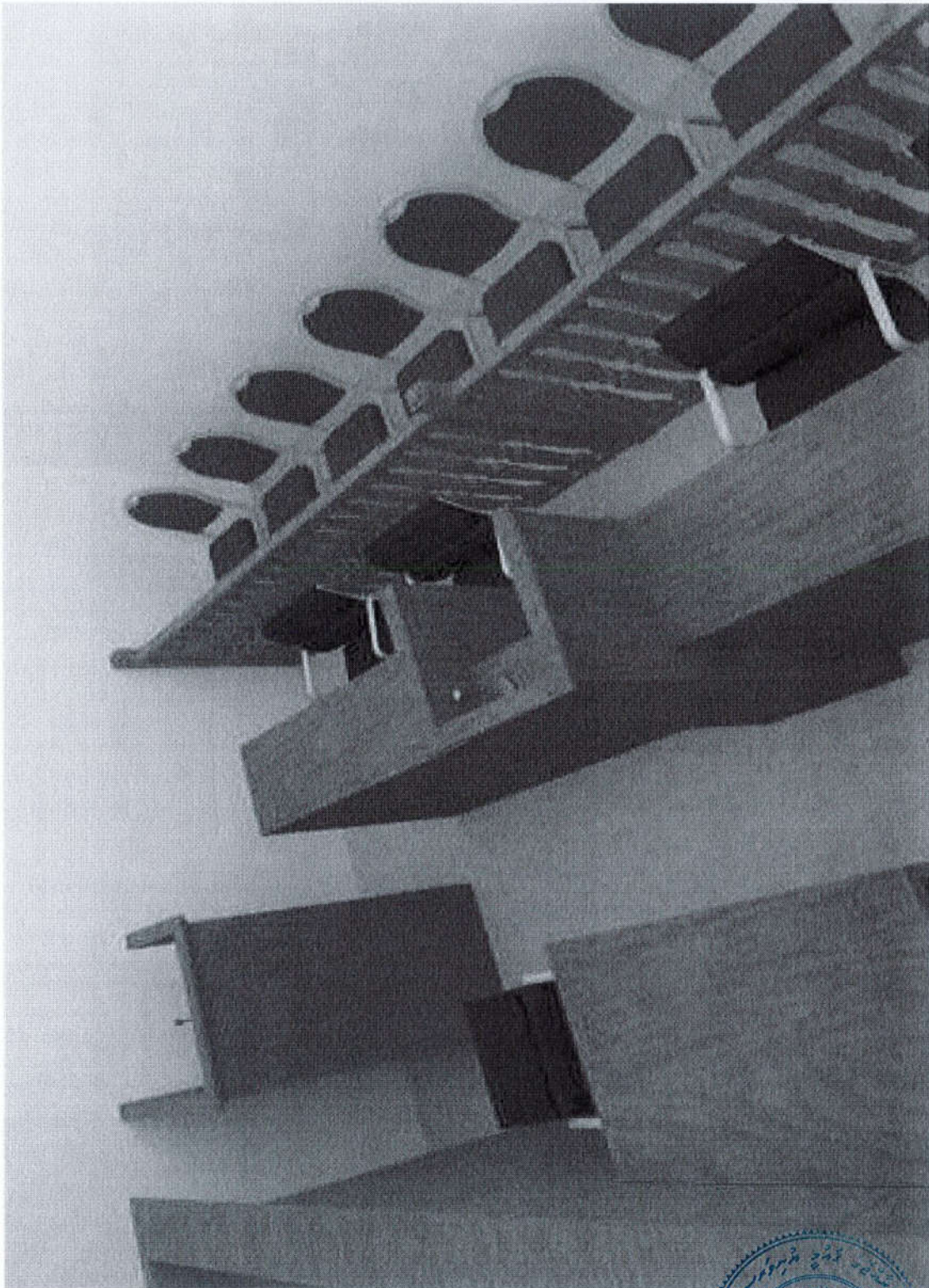
SECTION X-X
SCALE 1:100

۱- ضخامت دیوار ۲۰ سانتیمتر
 ۲- ضخامت کف ۱۰ سانتیمتر
 ۳- ضخامت سقف ۱۰ سانتیمتر
 ۴- ضخامت تیرچه ۱۰ سانتیمتر
 ۵- ضخامت تیرچه ۱۰ سانتیمتر
 ۶- ضخامت تیرچه ۱۰ سانتیمتر
 ۷- ضخامت تیرچه ۱۰ سانتیمتر
 ۸- ضخامت تیرچه ۱۰ سانتیمتر
 ۹- ضخامت تیرچه ۱۰ سانتیمتر
 ۱۰- ضخامت تیرچه ۱۰ سانتیمتر











Proposed Building FE Terrace Classroom, Maldives.

SUMMARY		
A	PRELIMINARIES	MRf. -
C	CONCRETE WORK	MRf. -
D	MASONARY WORK	MRf. -
F	DOORS AND WINDOWS	MRf. -
H	FLOOR, WALL & CEILING FINISHES	MRf. -
J	PAITING WORK	MRf. -
K	ROOF WORK	MRf. -
M	DRAINAGE AND STORM WATER DISPOSAL	MRf. -
N	ELECTRICAL INSTALLATION	MRf. -
O	MECHANICAL INSTALLATION	MRf. -
P	FURNITURES	MRf. -
X	MISCELLANEOUS	MRf. -
GRAND SUMMARY		MRfs. -



NO	DESCRIPTION	UNIT	QTY	RATE	AMOUNT
A	PRELIMINARIES				
1	GENERAL NOTES <u>ABBREVIATIONS</u> m - Metre Nr - Numbers m3 - Cubic metres m2 - Square metres m - Linear metre t - Tons inc - Including mm - Millimetre SS - Stainless steel GI - Galvanized iron				
2	Allow for setting out the work	Item	1.00		
3	Allow for all on and off site management cost including costs of foreman and	Item	1.00		
4	Allow for clean - up upon completion of works.	Item	1.00		
5	Insurance, bonds, gurantees and warranties (Insurance as stated in the	Item	1.00		
TOTAL FOR PRELIMINARIES CARRIED TO SUMMARY					-

No	Description	Unit	Qty	Rate	Amount
B	CONCRETE WORK				
	<u>Concrete</u> All concrete shall be made dence with a vibrator and finished to receive respective finishes. The type and stability shall be agreed with the consultant prior to commencement of concreting of each item. Rates shall include for plant for mixing, handling, hoisting, depositing, compacting, vibrating, curing, making good after removal of formwork and for any tests as necessary. Rate for concrete shall include forming joints between new concrete and old concrete as per drawings and specification unless otherwise measured separately. Concrete mix design details to be submitted to consultant's/ Engineer's approval.	Note			
	<u>Foundation Beam</u> Reinforced concrete in the following as per the detailed drawing-	Note			
1	Foundation Beam	m ³	1.60		
2	Column shafts up to roof beam	m ³	1.10		
3	Roof beams	m ³	0.96		
	<u>Reinforcement</u> The size of reinforcement rods described in the drawing or elsewhere shall be minimum size and the rolling margin and any other tolerance shall be wholly above this size. Hooks and laps have been measured with the quantities. All reinforcement shall be free from dirt, oil, paint, grease, or loose rust before fixing in position and shall be brushed with stiff wire brush. Reinforcement shall be bent cold by applying a slow even pressure on an approved type of bending apparatus.	Note			



NO	DESCRIPTION	UNIT	QTY	RATE	AMOUNT
	Rate shall include for cutting, bending, fabricating, placing in position, holding and supporting including temporary fixing supports, hangers and binding wire, ties, spaces, chairs.	Note			
	Formwork Rate shall include for all necessary boarding, supporting, application of mould oil as necessary erecting, framing, cutting angles, cleaning, wetting and treatment before placing concrete and striking or removal etc. construction joints.	Note			
	All formwork shall be in plywood (to provide fair face finish on concrete surfaces specially at slab soffit) not less than 1/2" Thk. With application of mould oil or laid on polythene layer with suitable laps to prevent leaking with suitable upstand at edges. Scaffolding shall be G.I. scaffolding system.				
	Back filling				
	a) Rates shall include for: leveling, grading, trimming and compacting.				
	(b) Polythene damp proof membrane (500 gauge) laid on blinding layer.				
4	Polythene memberane	m	11.00		
5	Sand fill up to foundation beam level	m	11.00		
	Miscellaneous Lintel 150x150mm high reinforced with 2Nos 12mm Dia. Torsteel rods and necessary formwork in the following				
6	Lintel above doors	m	0.14		
	TOTAL FOR CONCRETE WORK CARRIED TO SUMMARY				-
No	Description	Unit	Qty	Rate	Amount
D	MASONRY WORK Rate shall include for reinforcement concrete vertical and horizontal stiffeners for all 4 1/2 walls exceeding 10' length and 10' in height. All block shall be well burnt standard size block with specified strength. Rate shall include for scaffoldings. contractor shall finish the exterior and interior surface of brick work neatly strictly as per the instruction of the architect.	note note note note note			
1	Brick work 150x150x300mm hollow block wall in cement and sand 1:5 filling	m ²	23.8		
	TOTAL FOR MASONRY WORK CARRIED TO SUMMARY				-
No	Description	Unit	Qty	Rate	Amount
E	DOORS & WINDOWS Rates shall include for cutting, notching, drilling, linkage, trimming forming, joining, splayed edges and the like including fixing in position complete with all nails, spikes and screws and priming to joints and ends. Rates shall include for all labour materials, hardware materials, all fixing materials, adhesive, sanding finish/polishing and ironmongery.	Note Note			



NO	DESCRIPTION	UNIT	QTY	RATE	AMOUNT
	All timber solid doors, plywood doors and windows shall be finished with sanding sealer/polishing to all timber surfaces including preparation of surfaces with sand papering and filling all uneven surfaces with an approved filling materials. All ironmongery and fixing hardware for this section shall be high quality fittings and rates shall include for all necessary ironmongery.	Note Note			
1	D1 - Timber Door - 120mm thick Timber Frame & 40mm thick Solid Timber Panel with View Glass panel as per the drawing	Nr.	2.00		
TOTAL FOR CARPENTRY AND JOINERY CARRIED TO SUMMARY					-
No	Description	Unit	Qty	Rate	Amount
F	FLOOR, WALL AND CEILING FINISHES				
	The contractor shall submit samples of all materials, tile layout etc for prior approval of the Consultant/Engineer as necessary.	Note			
	The contractor shall use adhesives compatible with properties of tile, etc. material as per manufacturer's instruction of which shall not effect to any discoloration on the surface of tiles, discoloration on the surface of tiles, etc to be rectified by the contractor by replacing the same if necessary without any additional cost to the Employer	Note			
	Rates shall include for laying 50mm thick cement mortar in 1:5 mix ratio.				
	Floor Finishes				
1	50mm floor screeding	m ²	3.72		
2	Floor tiles in approved manufacture, 600x600 mm size, colour and design laid on and including 3/4" thick cement and sand 1:3 bedding and pointing with tile grout to match the colour of tiles to all areas	m ²	22.00		
	Skirting				
3	Supply & fixing 100mm high tile skirting's to walls and finished w as per the Engineer's approval.	m	8.70		
4	Non skid outdoor floor tiles in approved manufacture, 600x300mm size, colour and design laid on and including 3/4" thick cement and sand 1:3 bedding and pointing with tile grout to match the colour of classroom tiles for the adjoining area to the classroom and the existing building .	m ²	2.00		
	Wall finishes				
	Rates for plastering shall include for providing expanded joints, plastering the reveals, moldings, door window reveals, etc. as per the detailed drawings.	Note			
	Plastering				
	(a) 25mm thick Cement plastering on Exterior surface of External masonry walls and concrete surfaces and 15mm thick plastering on interior walls and concrete surface as specified incl. wire mesh shall be fixed at the joints of concrete surfaces and walls before plastering. Quantity is measured including concrete surfaces - Parapetwalls, Liftwalls, columns & beams.	Note			
	b) River Fine Sand / M.Sand shall be used for all plastering work. Local sand is not approved for Plastering works.				
	c) Rates shall include for approved brand water proofing compound shall be mixed with cement mortar for external wall plastering as per manufacturers specifications.				
	Internal				
5	Walls of classroom	m ²	5.20		



NO	DESCRIPTION	UNIT	QTY	RATE	AMOUNT
6	<u>External</u> External walls of classroom	m ²	4.00		
	<u>Ceiling finishes</u> Supply and installed gypsum board seamless flat ceiling with all accessories with seamless finish with 50 x 50 wooden frame for internal	Note			
	Supply and installed cement board flat ceiling with all accessories and finish with 50 x 50 wooden frame for external ceiling. Wooden beads to be put to cover the joints.				
7	Internal Ceiling	m ²	22.00		
8	Outside Ceiling	m ²	2.84		
	TOTAL FLOOR, WALL AND CEILING FINISHES CARRIED TO SUMMARY				-
No	Description	Unit	Qty	Rate	Amount
G	<u>PAINING WORK</u>				
	External weather shield paint C.I.C. or equivalent quality application of two coats and a primer undercoat as per manufacturer's instruction including preparation of surfaces to receive paint to external plastered walls in the following.	Note			
	<u>Wall painting</u> <u>External painting</u> External weather shield paint (Architect approved colour) C.I.C. or equivalent quality application of two coats and a primer undercoat as per manufacturer's instruction including preparation of surfaces to receive paint to external plastered walls in the following	Note			
1	External walls	m ²	41.00		
	<u>Internal painting</u> Internal paint mug mixing with chemfix in an approved manufacture C.I.C. or equivalent finish with two coats paint and suitable under coat including preparation of surfaces of internal plastered walls in the following.	Note			
2	Internal walls	m ²	54.00		
2	Ceiling Paints	m ³	25.50		
	TOTAL FOR PAINTING WORK CARRIED TO SUMMARY				-
No	Description	Unit	Qty	Rate	Amount
H	<u>ROOFER AND ROOF PLUMBING</u>				
	Rates shall included for all shop fabrication, transport to the site and erection in the final position. Rates shall include for all site welding, drilling, splay cutting, notching, etc.	Note			
	Rate shall include for all structural anchore bolts, nuts, washers and bolts, unless stated as per detail drawing.	Note			
	Rates shall include for allow for all costs associated with undertaking all precautions against fire while welding and cutting as specified	Note			



NO	DESCRIPTION	UNIT	QTY	RATE	AMOUNT
	Rates shall include for allow for all establishment , plant, cartages, scaffolding and hoisting equipment, two coats of anti corrosive paint and two coats of enamel paint and for co-operating with other trades.	Note			
1	TR1 - Supply fabrication and fixing 38.1 x 38.1 x 6mm and 25.4 x 25.4 x 6mm equal anagles as per the truss details welded to form 3.05 m long truses complete including epoxy / rust proof protection paint finishes	no	4.00		
2	Supply and fixing of timber rafters 50 x 150 mm x 6.8 m @ 800mm spacing	no	16.00		
3	Supply and fixing of timber battens 50 x 35 mm x 12.2 m @ 600mm spacing		11.00		
4	Supply & fixing of - lysaght roofing sheets Colourbond white	m ²	25.50		
5	supply and fixing of glasswool insulation with aluminium foil on both sides fixed underside of the roof covering with 25 mm grid GI mesh underneath to support the insulation	m	25.50		
6	Gutter made of lysaght sheets Colourbond white connected to the drainage system via 2 ends of the classroom	m	12.20		
7	Lysaght Colourbond white, edge flashing fixed with necessary clips and accessories complete to working order as per the drawing.	m	24.00		
	TOTAL FOR ROOF WORK CARRIED TO SUMMARY.				0.00
No	Description	Unit	Qty	Rate	Amount
I	<u>DRAINAGE AND STORM WATER DISPOSAL</u>				
	Supply and fixing 75 mm dia pvc down pipes including pipe works up to the side down pipes	Note			
	Rates shall include for screws, nails, pipe hooks, saddles, brackets, sockets, connections, lagging short length, back nuts, nipple joints, concrete blocks and the like and all holes chasings etc. and making good in other trades such as plaster and painting.	Note			
	All pipe diameters stated here shall be the nominal internal bore of the pipes.	Note			
	<u>Storm water disposal</u>				
1	110mm (4") dia storm water pipes with required fittings	m	9.00		
	TOTAL FOR DRAINAGE WORK CARRIED TO SUMMARY				-
No	Description	Unit	Qty	Rate	Amount
N	<u>ELECTRICAL INSTALLATION</u>				
	<u>Distribution Board</u>				
5	6 mm Cables installed from the main distribution boardl in the 4th floor of the CA Building including the cable of about 60 feet per distribution board, including 32A ELCB, 32 A MCB single phase with respective circuits for the electrical wiring listed below for AC, lights, power points etc.				
	Separate Cable for 2 distribution boards 6 mm (60 feet per classroom)	item	2.00		
	Distribution board for each classroom (inbuilt to the wall per classroom)	item	2.00		
	Wiring				



NO	DESCRIPTION	UNIT	QTY	RATE	AMOUNT
	Light point wiring complete with switches, conduit accessories, ceiling rose and all other accessories required to complete lighting circuits.	Note			
	Socket outlet (double) power switched socket on wall point wiring complete with switches, controllers, conduit, and all other accessories required to complete power circuits.				
	Electrical Wiring				
6	2.5 sq mm wiring to light points	Nr	18.00		
	2.5 sq mm wiring to power points	Nr	42.00		
7	2.5 sq mm wiring to AC points	Nr	4.00		
	Fixtures				
	Fans 1500mm dia KDK barand fan	Nr	4.00		
	Surface mount Led lights 24 Watts	Nr	14.00		
	1 x 13 A socket outlet at 300mm above floor level	Nr	6.00		
	2 x 13 A socket outlet at 300mm above floor level	Nr	32.00		
	1 x 15 A socket outlet at 1200mm above floor level	Nr	4.00		
	1 x 13 A socket outlet at 1200mm above floor level	Nr	2.00		
	1 x 13 A socket outlet at ceiling mount level	Nr	2.00		
	1 gang 1 way switches	Nr	2.00		
	3 gang 1 way switch	Nr	4.00		
	Emergency light	Nr	2.00		
	Fan dimmer	Nr	4.00		
	Multimedia Projector				
	Multimedia Projector mounted on the ceiling with the projector stand and connected to the computer near the Teacher station via HDMI cable.	Nr	2.00		
	Specification of the projector	Minimum Requirements			
	Image Brightness	3000 Lumens			
	Lamp Type	LCD / DLP			
	Resolution	1200 x 800			
	Features	Keystone, Focus			
	Video Input	HDMI and VGA			
	Projection Method	Rear, Front and Ceiling			
	TOTAL FOR ELECTRICAL INSTALLATION CARRIED TO SUMMARY				-
No	Description	Unit	Qty	Rate	Amount
0	MECHANICAL INSTALLATION				
	ACMV				
	Supply of spit air conditioner unit with indoor,outdoor units, pipes and other accessories as per the engineers instruction and specifications (Hitachi or Panasonic)	Note			
1	24000btu AC units for indoor restaurant area	Nr	4.00		
	TOTAL FOR MECHANICAL INSTALLATION CARRIED TO SUMMARY				-
No	Description	Unit	Qty	Rate	Amount
P	Furniture				
1	Computer table as per the drawing	Nr.	20.00		
2	Teacher Table (standard 4 ft x 2 ft table)	Nr.	2.00		
3	Lecture chair	Nr.	2.00		
4	Moot court set up as per the drawing	Nr.	1.00		



NO	DESCRIPTION	UNIT	QTY	RATE	AMOUNT
	TOTAL FOR FURNITURE CARRIED TO SUMMARY				-
No	Description	Unit	Qty	Rate	Amount
X	Include any variations	Nr.	-	-	-
	TOTAL FOR MISCELLANEOUS WORK CARRIED TO SUMMARY				-



ސަލާމަތުގެ ލިޔެކިޔުން ބޭނުންކުރާ ފަރާތްތަކުގެ ތެރޭގައި ހިމެނޭ ބަޔާން ފޮޓޯ

		ސަލާމަތުގެ ލިޔެކިޔުން ބޭނުންކުރާ ފަރާތްތަކުގެ ތެރޭގައި ހިމެނޭ ބަޔާން ފޮޓޯ
80	<ul style="list-style-type: none"> • ފަހަރު ފަހަރު ހަފްތާ ގޮތުގައި / ފަހަރު ފަހަރު $80 \times$ (އަދަދު ފަދަ ފެން ފަހަރު ފަހަރު ހަފްތާ ގޮތުގައި ހަފްތާ ގޮތުގައި ބަޔާން ފޮޓޯ ފަހަރު ފަހަރު ހަފްތާ ގޮތުގައި ހަފްތާ ގޮތުގައި ބަޔާން ފޮޓޯ) 	ހަފްތާ
20	<ul style="list-style-type: none"> • ބަޔާން ފޮޓޯ ބަޔާން ފޮޓޯ ބަޔާން ފޮޓޯ ބަޔާން ފޮޓޯ ބަޔާން ފޮޓޯ ބަޔާން ފޮޓޯ ބަޔާން ފޮޓޯ ބަޔާން ފޮޓޯ • ބަޔާން ފޮޓޯ ބަޔާން ފޮޓޯ ބަޔާން ފޮޓޯ ބަޔާން ފޮޓޯ ބަޔާން ފޮޓޯ ބަޔާން ފޮޓޯ ބަޔާން ފޮޓޯ 	ބަޔާން ފޮޓޯ ބަޔާން ފޮޓޯ
100		ހަފްތާ

