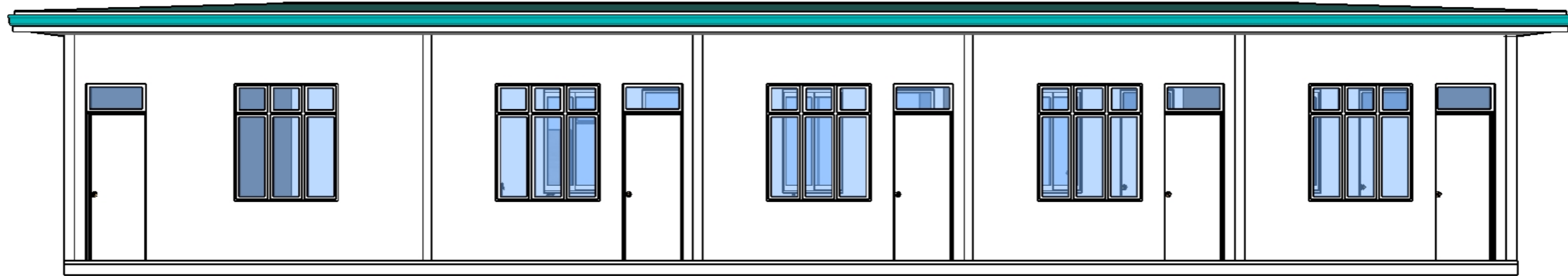




Secretariat of the Uligan Council
HA. Uligan, Rep. of Maldives



Ijuthimaeee Hiyaage Kulee Kotarithakah Badhalugenaumaai Maraamaathukurun

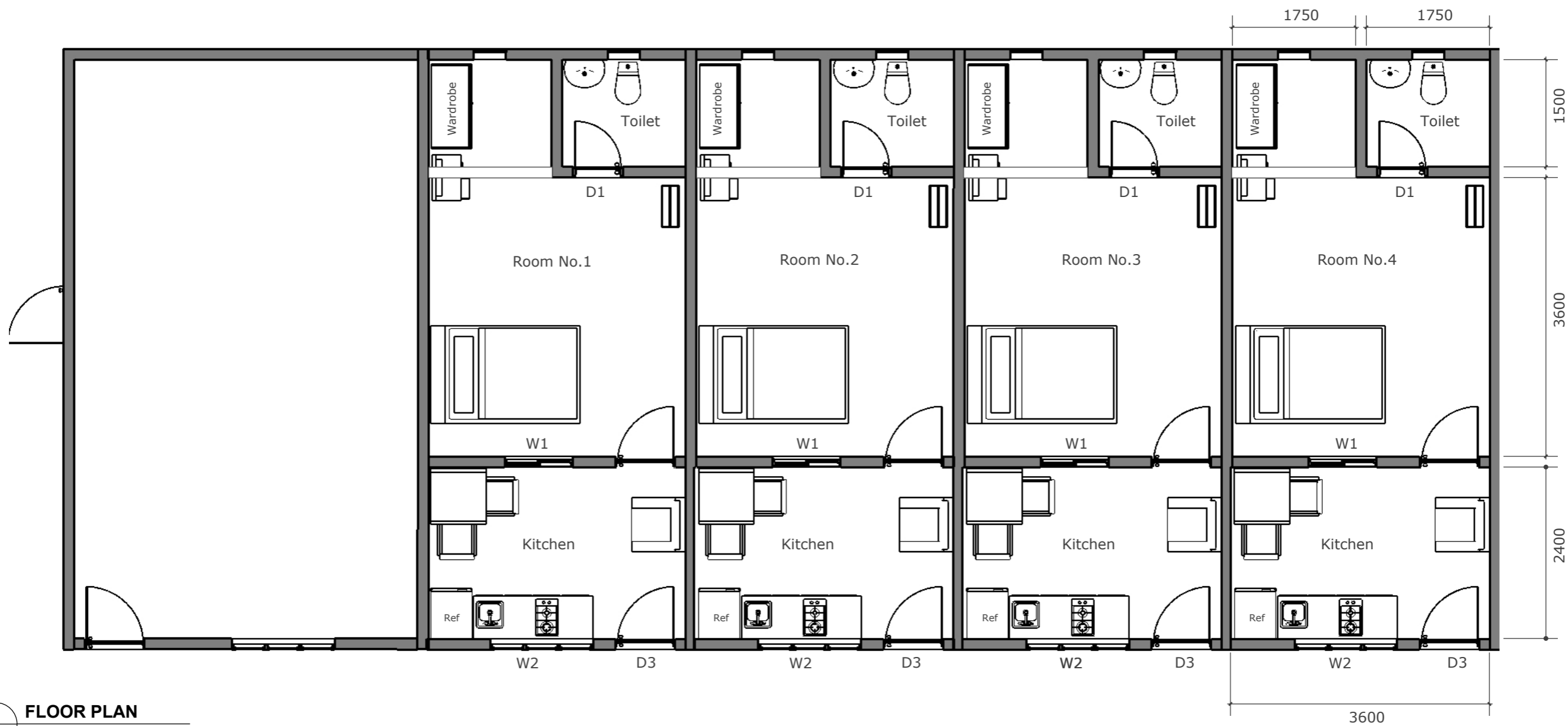
Project Number: PC-245/2023/W-04



Secretariat of the Uligan Council

Ali Magu
HA. Uligan, 01020
projects@uligan.gov.mv
www.uligan.gov.mv

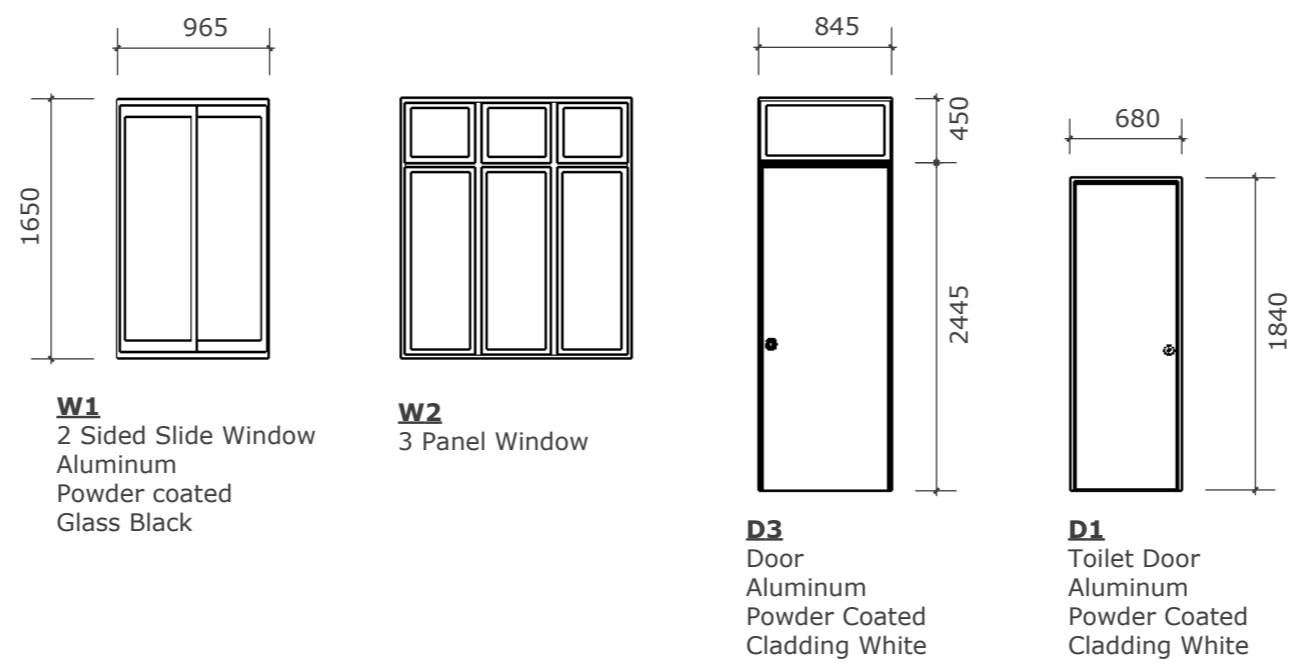
**Ijuthimaeee Hiyaage Kulee Kotarithakah
Badhalugenaumaai, Maraamaathukurun**

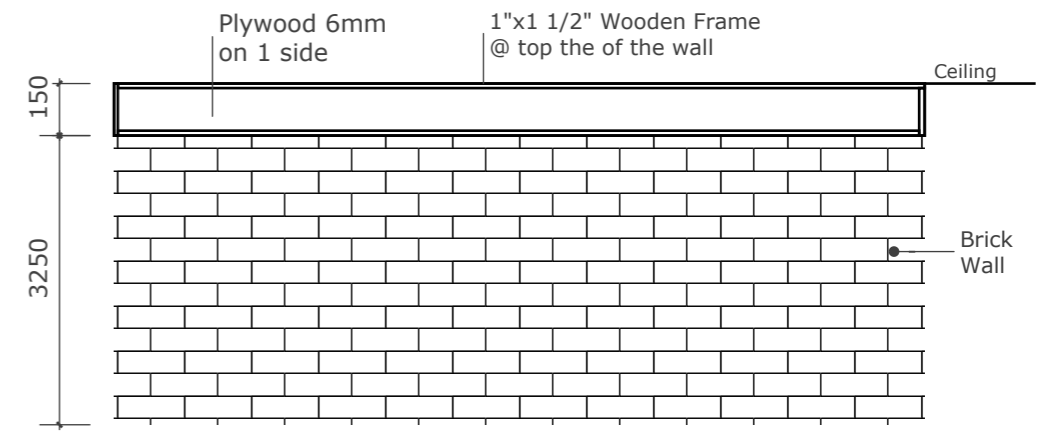
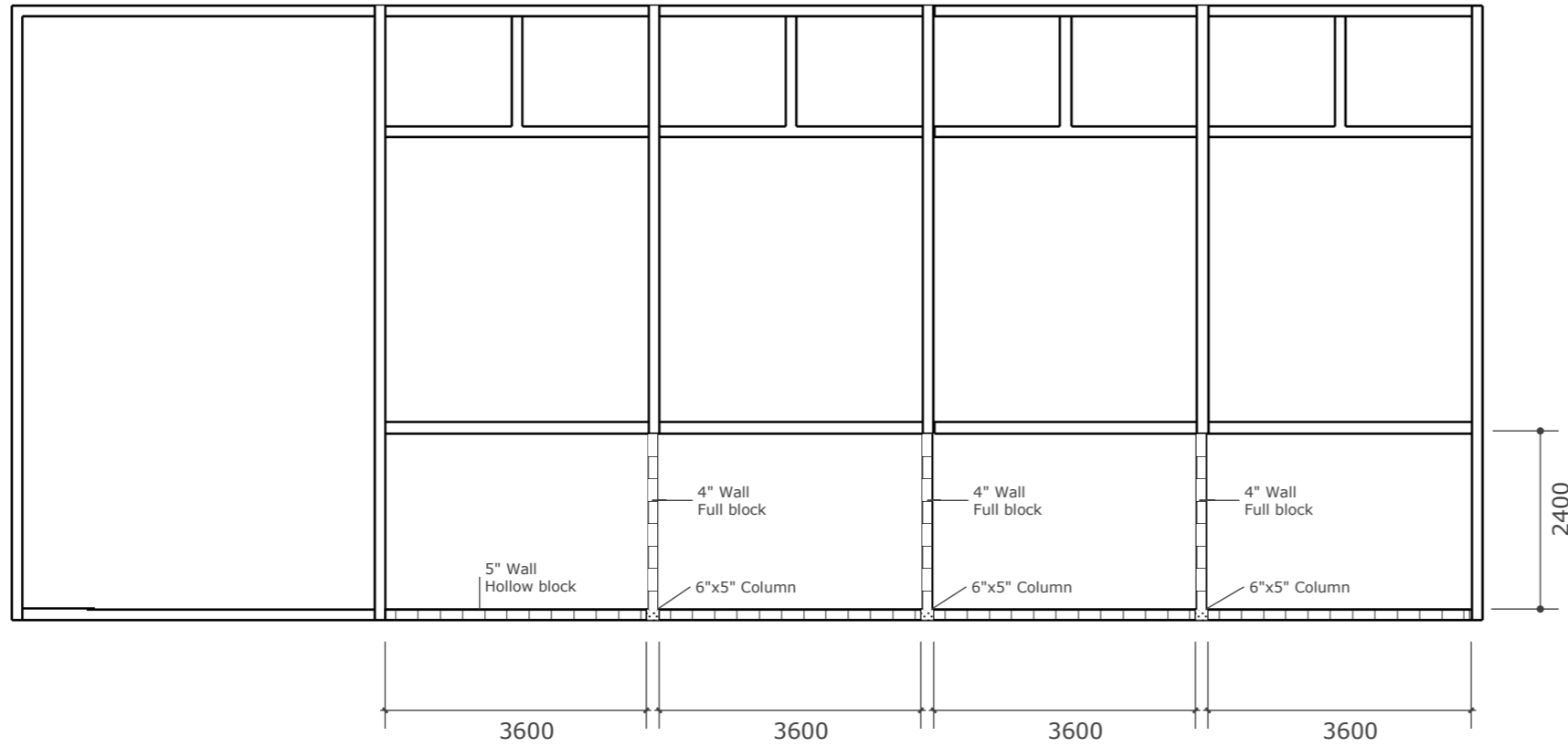


1 FLOOR PLAN
A01 Scale: 3/16" : 1' (1:64)

Note: All rooms, toilets, and kitchens are equal in size.

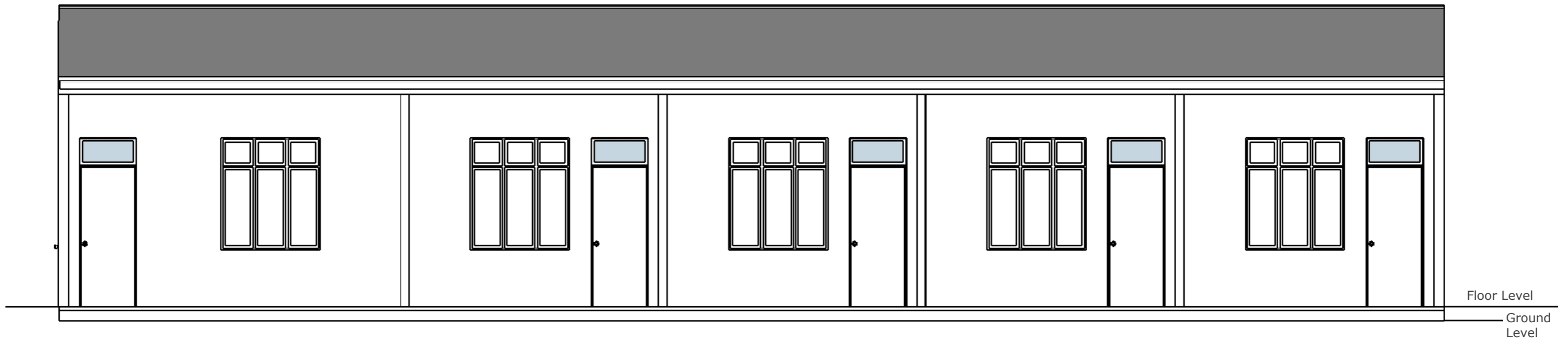
2 DOOR & WINDOW
A01 Not to Scale



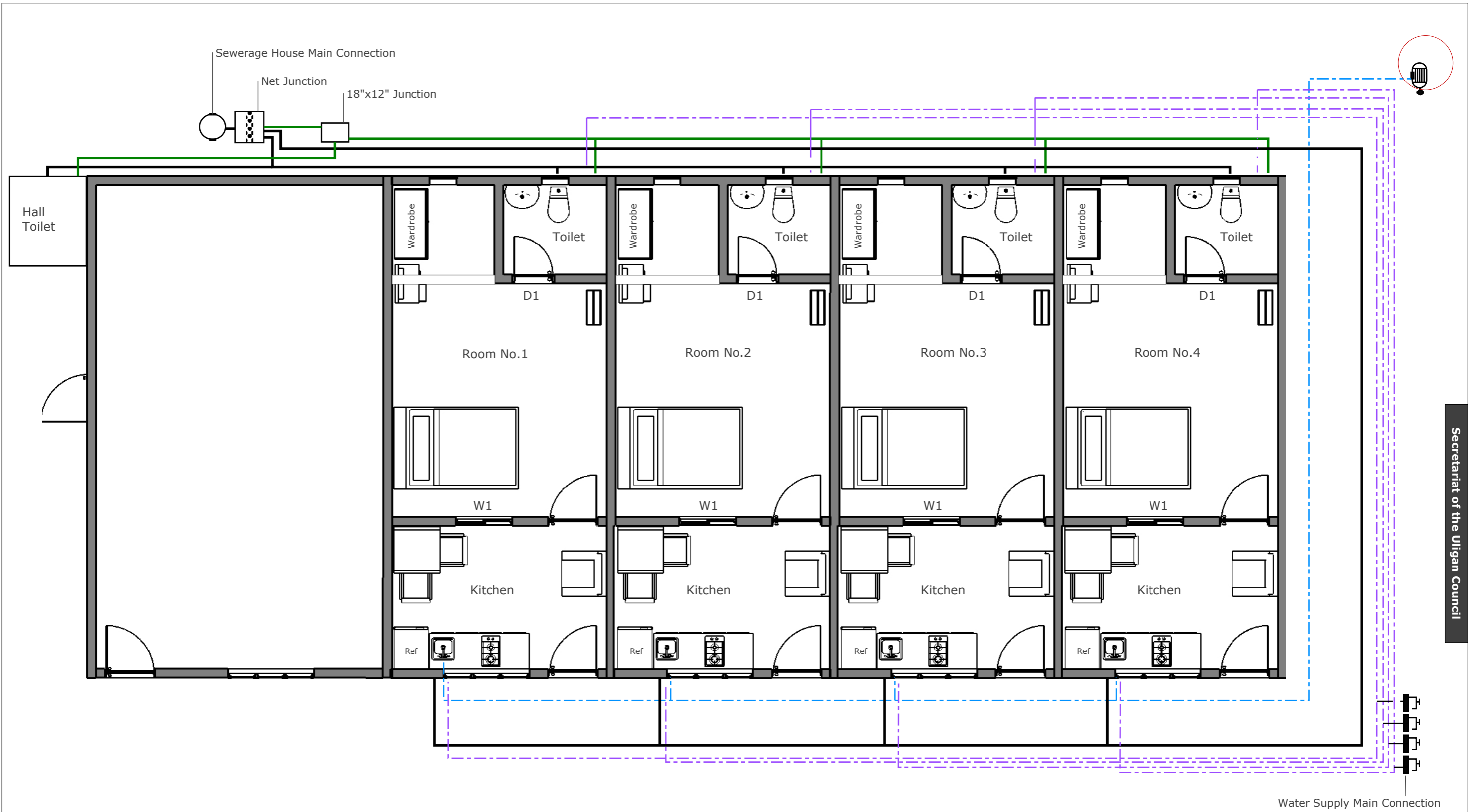


WALL DETAILS
Not to Scale






1 MASONRY WALL
A02 Scale: 1/8" : 1' (1:96)



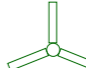






2 FRONT ELEVATION
A02 Scale: 3/16" : 1' (1:64)



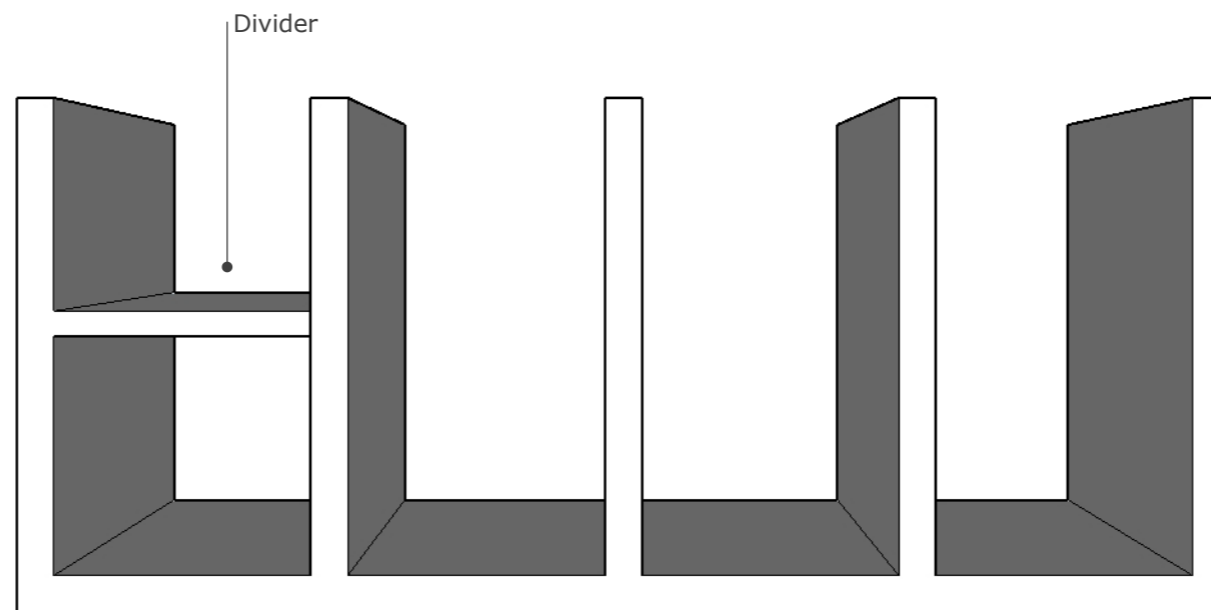
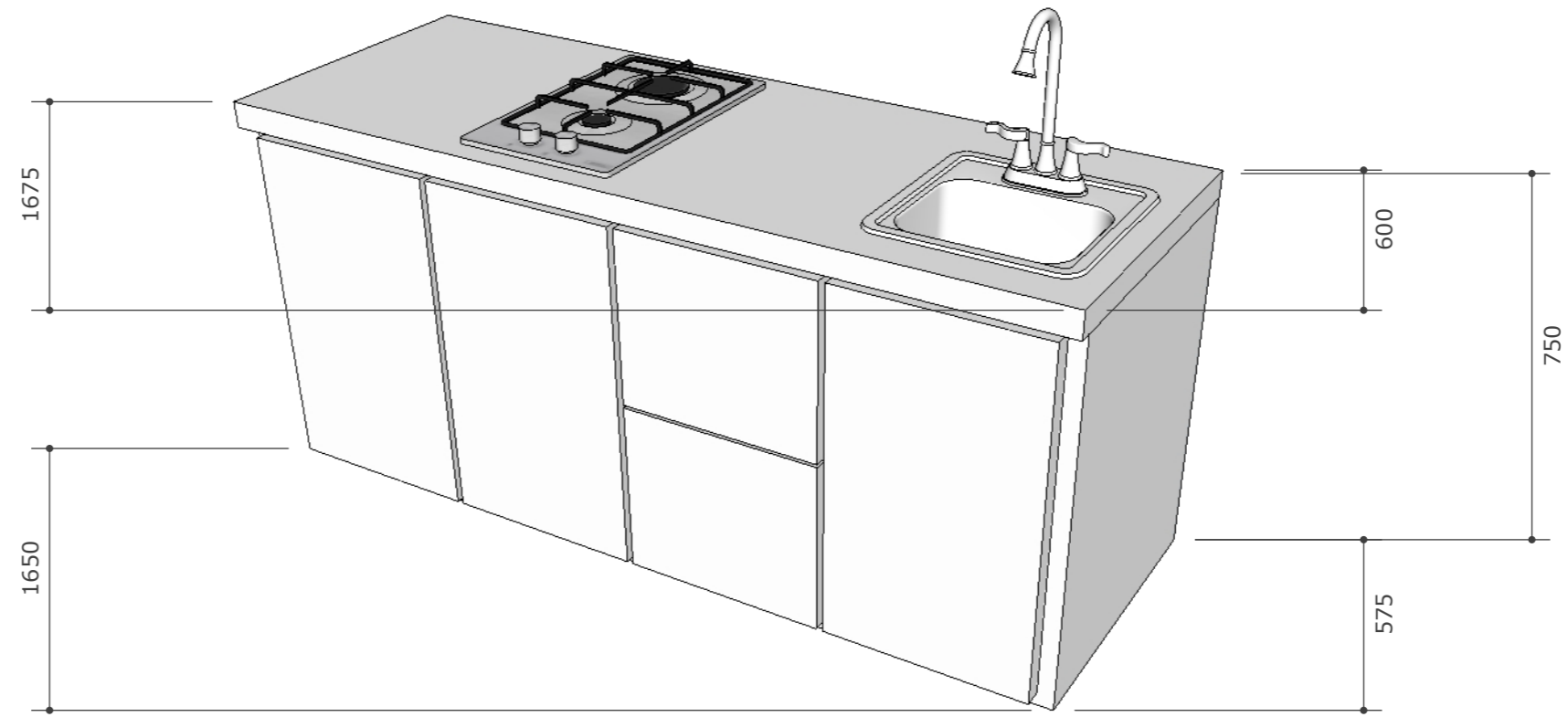
1 PLUMBING LAYOUT
A03 Scale: 3/16" : 1' (1:64)

-  Water Pump 150W 1"
-  4" PVC Class 5 Pipe
-  3" PVC Class 5 Pipe
-  1" PVC Class 5 Pipe (Well Water line)
-  1" PVC Class 5 Pipe (Water Supply line)



-  Ceiling Fan 1200mm
-  Recessed Down Light 12W
-  Ceiling Mounted Surface Round LED Panel Light 22W
-  House Hour Meter Single Phase
-  Flush Mounted Distribution Box 12S
-  Socket outlet Single Gang
-  Double Gang Switch
-  Three Gang Switch
-  Fan Control

1 ELECTRICAL PLAN
A04 Scale: 3/16" : 1' (1:64)



1 KITCHEN CABINET
 A06 Scale: 3/16" : 1' (1:64)