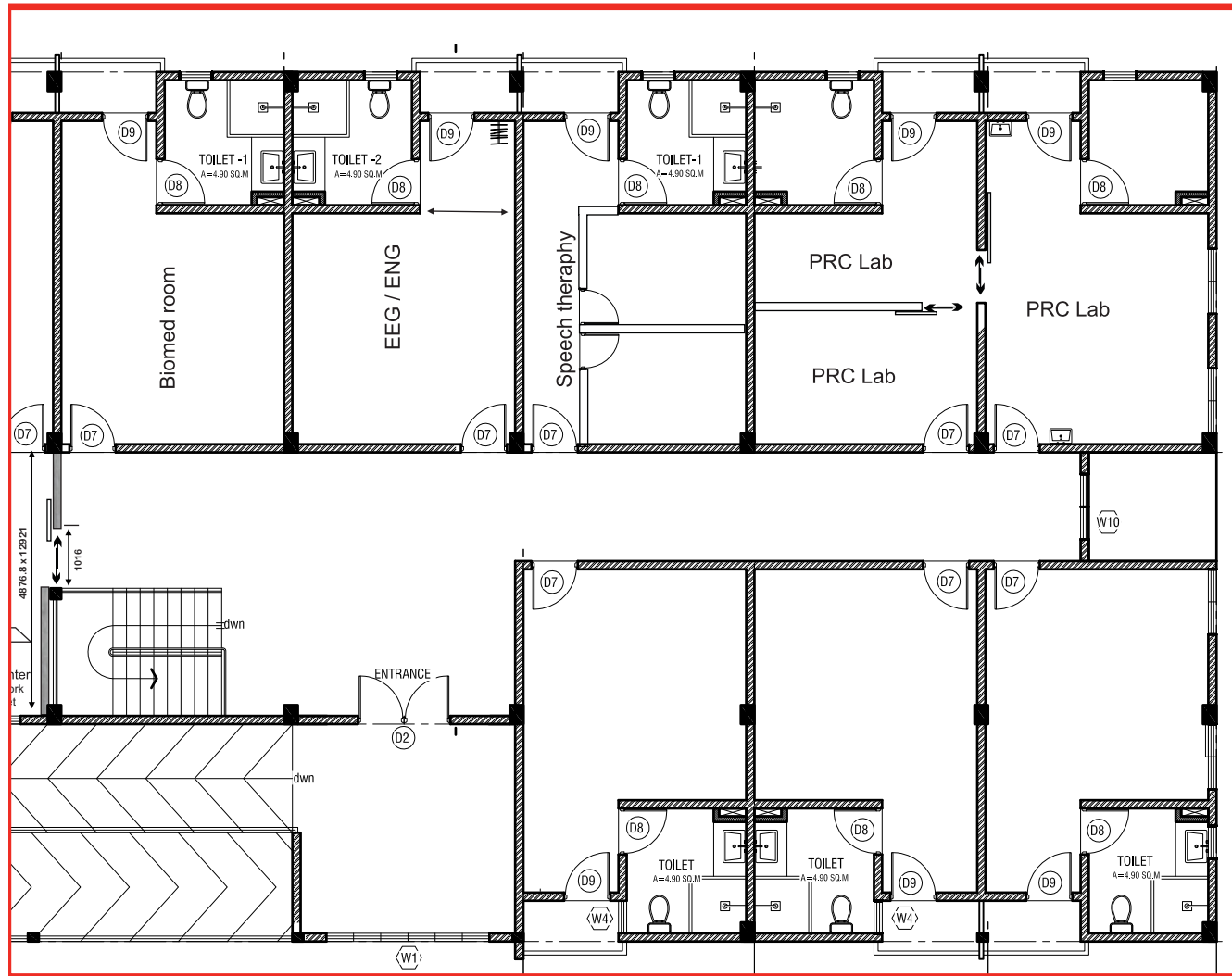
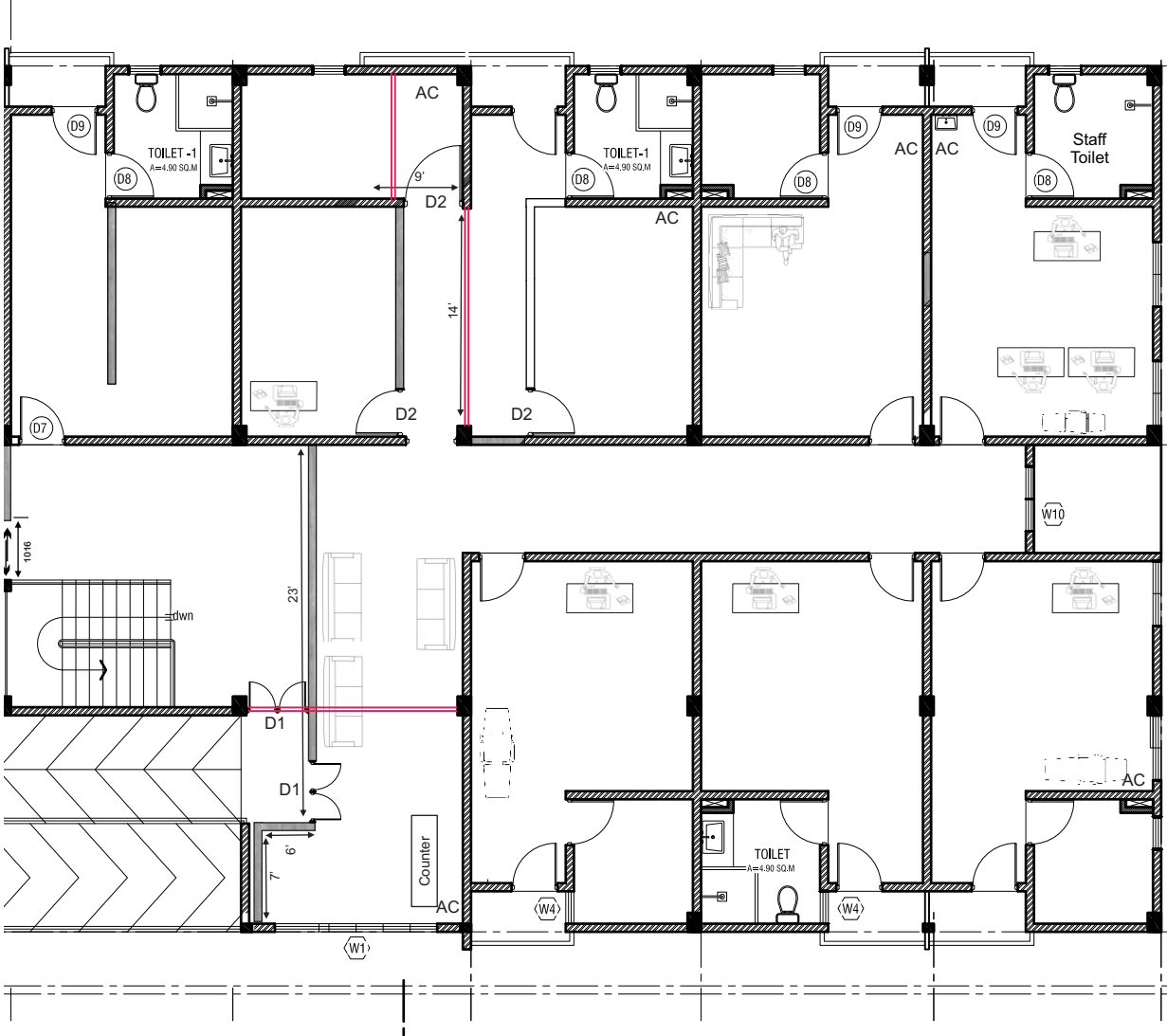


Existing Floor Plan

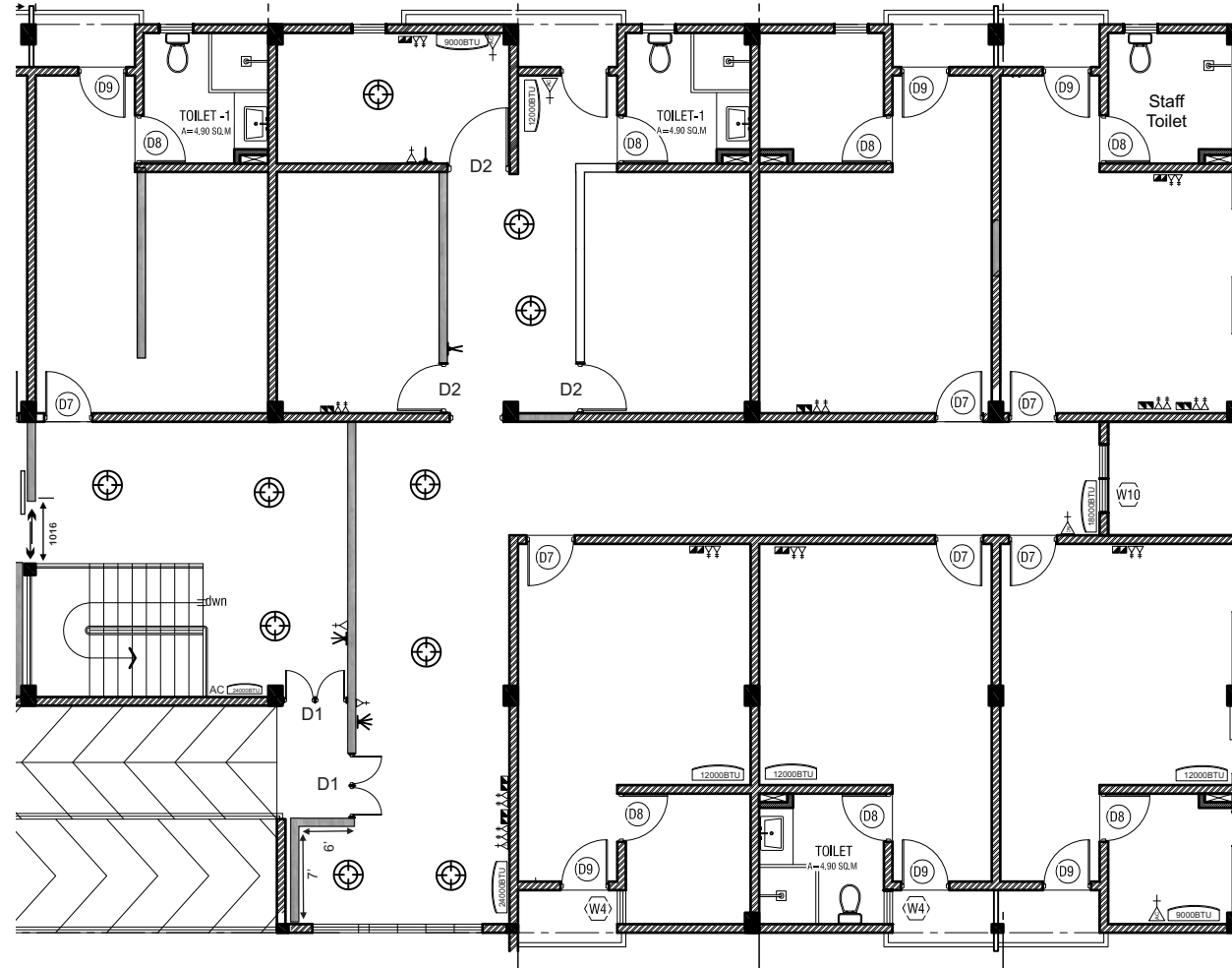


Proposed floor plan



Partition  
Existing wall

## Electric and net work layout



SYMBOL	DESCRIPTION
	LED BULB 18W 150MM
	2 x 13 AMP SOCKET OUTLET (600MM ABOVE FFL)
	1 x 15 AMP AC SOCKET OUTLET ( 300MM BLW, CEILING)
	NETWORK KEYSTONE
	TWO GANG SWITCH
	AIR CONDITION
	DISTRIBUTION BOARD (WALL EMBEDDED)

# Kulhudhuffushi Regional Hospital

## DOORS SCHEDULE

SYMBOL	D1	D2	
ELEVATION			
DESCRIPTION	40MM THICK OPENABLE ALUMINUM FRAMED DOOR	40MM THICK OPENABLE ALUMINUM FRAMED DOOR	40MM THICK OPENABLE ALUMINUM FRAMED DOOR
FRAME	120MM ALUMINUM FRAME 80 MICRON WHITE POWDER COATED	120MM ALUMINUM FRAME 80 MICRON WHITE POWDER COATED	120MM ALUMINUM FRAME 80 MICRON WHITE POWDER COATED
HARDWARE	DOOR CLOSER HANDLE LOCK BUTT HINGE STOPPER HOLDER KICKER DOOR LATCH	DOOR CLOSER HANDLE LOCK BUTT HINGE STOPPER HOLDER KICKER	DOOR CLOSER HANDLE LOCK BUTT HINGE STOPPER HOLDER KICKER

GL = 6MM THICK CLEAR GLASS

CL = 6MM THICK WHITE POWDER COATED CLADDING

ALL THE ALUMINUM PROFILE MUST BE MINIMUM 2MM THICK.

Kulhudhuffushi Regonal Hospital  
Kulhudhuffushi City

# Furniture

