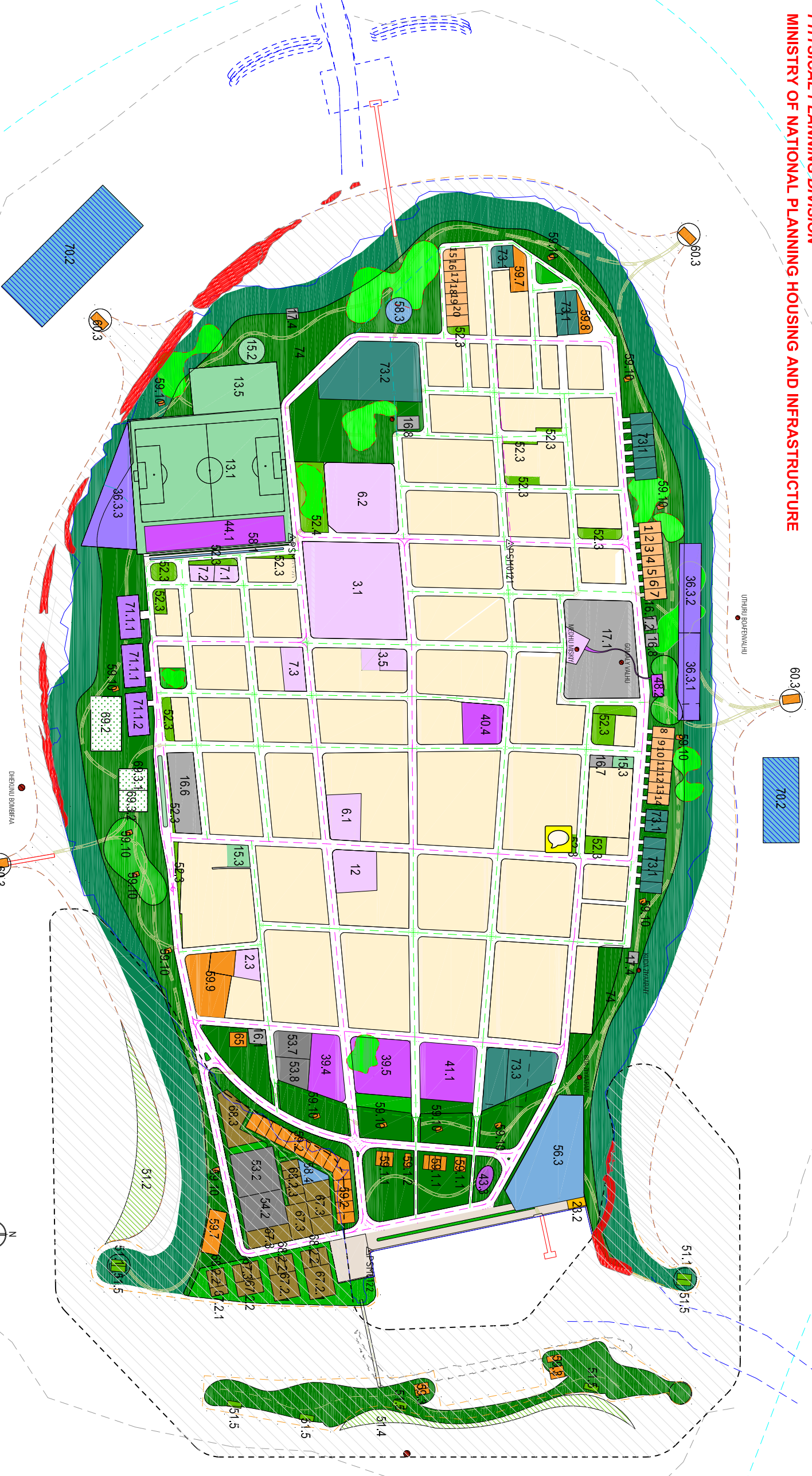


**APPROVED**

Reference to Letter 471-DNPS2/288/2022/17 (15 DECEMBER 2022)

PHYSICAL PLANNING DIVISION

MINISTRY OF NATIONAL PLANNING HOUSING AND INFRASTRUCTURE



**NOTE: ALL MEASUREMENTS SHOULD BE CHECKED PHYSICALLY ON THE GROUND BEFORE LAND ALLOCATION.**

# KUDAFARI LANDUSE PLAN 2022

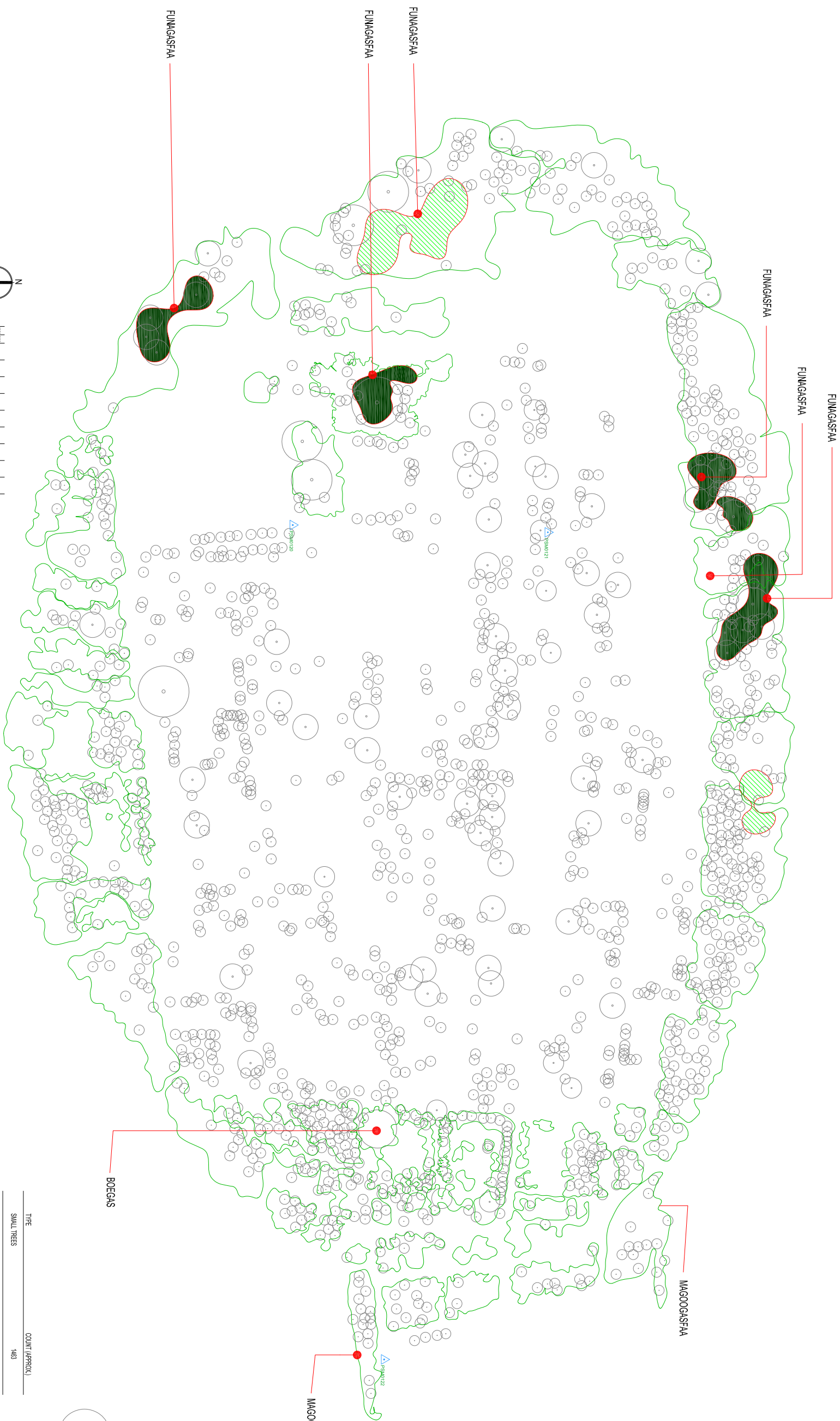
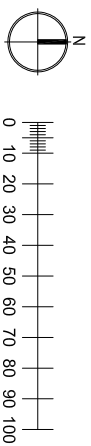
1:2000

	<b>SECRETARIAT OF KUDAFARI COUNCIL</b> POLICY, PLANNING, RESEARCH & MONITORING UNIT VILLET MASJID KUDAFARI (KUDAFARI) MALDIWIVANU ATOLL I info@kudafarimn.gov.mv   776-254	<b>CONSULTANTS:</b> PLANNING CONSULTANT: ATOLSPACE STUDIO CONSTRUCTION CONSULTANT: HISHAM TRANSPORTATION CONSULTANT: ON-ENG PVT. LTD. COMMUNITY DEVELOPMENT CONSULTANT: LAND SEA MALDIVES SOCIO-ECONOMIC RESEARCH: ARISHAD DIRECTOR: AHMED HASNID (by her previous)	<b>DRAWING NUMBER:</b> A01
--	---	--	-------------------------------

<b>REFERENCE DOCUMENTS:</b> DPRDC SURVEY: NOVEMBER 2021 TOPOGRAPHIC SURVEY: DECEMBER 2021 BASELINE SURVEY:	<b>SCALE:</b> 1:2000 PAPER: A1
---	-----------------------------------

<b>PROPOSED LAND USES</b>	<b>EXISTING LAND USES</b>
<ul style="list-style-type: none"><li>RESIDENTIAL PLOTS (RGB 252,242,207)</li><li>INSTITUTIONAL &amp; COMMUNITY ZONE (RGB 242,204,255)<ul style="list-style-type: none"><li>2 Public Administration</li><li>2.3 Council Storage (Bandha)</li></ul></li><li>UTILITY &amp; MUNICIPAL SERVICES ZONE (RGB 173,173,173)<ul style="list-style-type: none"><li>16 Utility<ul style="list-style-type: none"><li>16.1.1 Dhiragu Tower</li><li>16.1.2 Ooredoo Tower</li><li>16.3 Water Plant</li><li>16.7 Water Storage Tanks</li><li>16.8 Cable TV (lease land)</li></ul></li><li>17 Municipal<ul style="list-style-type: none"><li>17.1 Cemetery</li><li>17.4 Pump Station</li></ul></li></ul></li><li>COMMERCIAL USE (RGB 255,191,0)<ul style="list-style-type: none"><li>23 Markets</li><li>23.2 - Fish Market</li></ul></li><li>INDUSTRIAL ZONE (RGB 204,178,102)<ul style="list-style-type: none"><li>32 Light</li><li>32.2-32.9 Others</li></ul></li><li>TOURISM (RGB 159,127,255)<ul style="list-style-type: none"><li>36.3.1 Guest House (Navaratu)</li><li>36.3.2 Guest House (Suvasthi)</li><li>36.3.3 Guest House (Seaside Funama)</li></ul></li><li>MIXED USE ZONE (RGB 56,138,128)<ul style="list-style-type: none"><li>73.1 Mixed Commercial Residential (Shop House - Housing exchange)</li><li>73.2 Mixed Commercial Residential (Land Plots)</li><li>73.3 Commercial Mixed Use</li></ul></li><li>INSTITUTIONAL &amp; COMMUNITY ZONE (RGB 212,82,255)<ul style="list-style-type: none"><li>39 Public Administration<ul style="list-style-type: none"><li>39.4 Public Administration Office (Emmedhu Inaarai)</li><li>39.5 Town Hall</li></ul></li><li>40 Education<ul style="list-style-type: none"><li>40.4 Kudafaree Training Institute</li></ul></li><li>41 Health<ul style="list-style-type: none"><li>41.1 Health Center/Public Health Unit</li></ul></li><li>43 Islamic Affairs<ul style="list-style-type: none"><li>43.3 Travellers Mosque</li></ul></li><li>44 Private Organizations<ul style="list-style-type: none"><li>44.1 Club House Complex</li></ul></li><li>48 Arts, Culture and Heritage<ul style="list-style-type: none"><li>48.2 Culture Center (Medhu Miskiy)</li></ul></li></ul></li><li>SPORTS &amp; RECREATION ZONE (RGB 97,194,0)<ul style="list-style-type: none"><li>51 Water Sports<ul style="list-style-type: none"><li>51.1 Diving &amp; Water sports</li><li>51.2 Safe Swimming Area</li><li>51.4 Surf Break Point</li><li>51.5 Lifeguard &amp; Surf Station</li></ul></li><li>52 Parks and Open Spaces<ul style="list-style-type: none"><li>52.3 Pocket Park</li><li>52.4 Embury Park</li></ul></li></ul></li><li>UTILITY &amp; MUNICIPAL SERVICES ZONE (RGB 132,132,132)<ul style="list-style-type: none"><li>53 Utility<ul style="list-style-type: none"><li>53.2 Power House</li><li>53.7 Utility Office (Electricity &amp; Water)</li><li>53.8 Boiling Plant</li></ul></li><li>54 Municipal<ul style="list-style-type: none"><li>54.2 Waste Management Center / Recycle Center</li></ul></li><li>TRANSPORTATION (RGB 122,175,223)<ul style="list-style-type: none"><li>56 Ferry Terminal</li><li>56.3 Ferry Terminal / Bandharu Exchange Complex</li><li>58 Land Transportation<ul style="list-style-type: none"><li>58.1 School Parking</li><li>58.3 Terminal</li><li>58.4 Public Transport Vehicles Parking &amp; Management</li></ul></li></ul></li><li>COMMERCIAL USE (RGB 247,148,29)<ul style="list-style-type: none"><li>59 Shops<ul style="list-style-type: none"><li>59.1.1 FNB and Shops</li><li>59.1.2 FNB and Shops (KFC)</li><li>59.2 Showrooms / Wholesale Shops</li><li>59.3 FNB Shops at Gul Thoshi</li><li>59.7 Commercial Plots (KFC)</li><li>59.8 Commercial Plots (KFC)</li><li>59.9 Mas Badhige (KFC)</li><li>59.10 Gaadhya (KFC)</li></ul></li><li>60 Markets<ul style="list-style-type: none"><li>60.3 Farm2table - Pier</li></ul></li><li>65 Reserve for future commercial use</li></ul></li><li>INDUSTRIAL ZONE (RGB 153,128,51)<ul style="list-style-type: none"><li>67 Heavy<ul style="list-style-type: none"><li>67.2.1 Boat Building and Repair - Dockyard</li><li>67.2.2 Boat Building and Repair - Dockyard (KFC)</li><li>67.3 Heavy Industrial Plots</li></ul></li><li>68 Light<ul style="list-style-type: none"><li>68.2.1 Dockyard Workshops (KFC)</li><li>68.2.2 Dockyard Workshops</li><li>68.2.3 Light Workshops</li><li>68.3 Makers Space</li></ul></li></ul></li><li>AGRICULTURE AND MARICULTURE (RGB 0,76,0)<ul style="list-style-type: none"><li>69 Land<ul style="list-style-type: none"><li>69.2 Organic Farmland</li><li>69.3.1 Kudafaree Nursery</li><li>69.3.2 Kudafaree Native Species Nursery</li><li>69.4 Agriculture Lease Land</li><li>69.5-69.9 Others</li></ul></li><li>70 Water (62,145,165)<ul style="list-style-type: none"><li>70.2 Mariculture / Coral Farming</li></ul></li></ul></li><li>TOURISM (RGB 191,127,255)<ul style="list-style-type: none"><li>71.1 Guest House &amp; FNB</li><li>71.2 Guest House &amp; FNB (KFC)</li></ul></li><li>OPENGREEN BUFFER AREAS (RGB 0,127,0)<ul style="list-style-type: none"><li>74 Green Buffer Areas</li><li>75 Jungle area</li></ul></li><li>ENVIRONMENTAL PROTECTION ZONE (EPZ) (RGB 7,131,83)</li></ul></li></ul>	<ul style="list-style-type: none"><li>RESIDENTIAL PLOTS (RGB 252,242,207)</li><li>INSTITUTIONAL &amp; COMMUNITY ZONE (RGB 242,204,255)<ul style="list-style-type: none"><li>2 Public Administration</li><li>2.3 Council Storage (Bandha)</li></ul></li><li>UTILITY &amp; MUNICIPAL SERVICES ZONE (RGB 173,173,173)<ul style="list-style-type: none"><li>16 Utility<ul style="list-style-type: none"><li>16.1.1 Dhiragu Tower</li><li>16.1.2 Ooredoo Tower</li><li>16.3 Water Plant</li><li>16.7 Water Storage Tanks</li><li>16.8 Cable TV (lease land)</li></ul></li><li>17 Municipal<ul style="list-style-type: none"><li>17.1 Cemetery</li><li>17.4 Pump Station</li></ul></li></ul></li><li>COMMERCIAL USE (RGB 255,191,0)<ul style="list-style-type: none"><li>23 Markets</li><li>23.2 - Fish Market</li></ul></li><li>INDUSTRIAL ZONE (RGB 204,178,102)<ul style="list-style-type: none"><li>32 Light</li><li>32.2-32.9 Others</li></ul></li><li>TOURISM (RGB 159,127,255)<ul style="list-style-type: none"><li>36.3.1 Guest House (Navaratu)</li><li>36.3.2 Guest House (Suvasthi)</li><li>36.3.3 Guest House (Seaside Funama)</li></ul></li><li>MIXED USE ZONE (RGB 56,138,128)<ul style="list-style-type: none"><li>73.1 Mixed Commercial Residential (Shop House - Housing exchange)</li><li>73.2 Mixed Commercial Residential (Land Plots)</li><li>73.3 Commercial Mixed Use</li></ul></li><li>INSTITUTIONAL &amp; COMMUNITY ZONE (RGB 212,82,255)<ul style="list-style-type: none"><li>39 Public Administration<ul style="list-style-type: none"><li>39.4 Public Administration Office (Emmedhu Inaarai)</li><li>39.5 Town Hall</li></ul></li><li>40 Education<ul style="list-style-type: none"><li>40.4 Kudafaree Training Institute</li></ul></li><li>41 Health<ul style="list-style-type: none"><li>41.1 Health Center/Public Health Unit</li></ul></li><li>43 Islamic Affairs<ul style="list-style-type: none"><li>43.3 Travellers Mosque</li></ul></li><li>44 Private Organizations<ul style="list-style-type: none"><li>44.1 Club House Complex</li></ul></li><li>48 Arts, Culture and Heritage<ul style="list-style-type: none"><li>48.2 Culture Center (Medhu Miskiy)</li></ul></li></ul></li><li>SPORTS &amp; RECREATION ZONE (RGB 97,194,0)<ul style="list-style-type: none"><li>51 Water Sports<ul style="list-style-type: none"><li>51.1 Diving &amp; Water sports</li><li>51.2 Safe Swimming Area</li><li>51.4 Surf Break Point</li><li>51.5 Lifeguard &amp; Surf Station</li></ul></li><li>52 Parks and Open Spaces<ul style="list-style-type: none"><li>52.3 Pocket Park</li><li>52.4 Embury Park</li></ul></li></ul></li><li>UTILITY &amp; MUNICIPAL SERVICES ZONE (RGB 132,132,132)<ul style="list-style-type: none"><li>53 Utility<ul style="list-style-type: none"><li>53.2 Power House</li><li>53.7 Utility Office (Electricity &amp; Water)</li><li>53.8 Boiling Plant</li></ul></li><li>54 Municipal<ul style="list-style-type: none"><li>54.2 Waste Management Center / Recycle Center</li></ul></li><li>TRANSPORTATION (RGB 122,175,223)<ul style="list-style-type: none"><li>56 Ferry Terminal</li><li>56.3 Ferry Terminal / Bandharu Exchange Complex</li><li>58 Land Transportation<ul style="list-style-type: none"><li>58.1 School Parking</li><li>58.3 Terminal</li><li>58.4 Public Transport Vehicles Parking &amp; Management</li></ul></li></ul></li><li>COMMERCIAL USE (RGB 247,148,29)<ul style="list-style-type: none"><li>59 Shops<ul style="list-style-type: none"><li>59.1.1 FNB and Shops</li><li>59.1.2 FNB and Shops (KFC)</li><li>59.2 Showrooms / Wholesale Shops</li><li>59.3 FNB Shops at Gul Thoshi</li><li>59.7 Commercial Plots (KFC)</li><li>59.8 Commercial Plots (KFC)</li><li>59.9 Mas Badhige (KFC)</li><li>59.10 Gaadhya (KFC)</li></ul></li><li>60 Markets<ul style="list-style-type: none"><li>60.3 Farm2table - Pier</li></ul></li><li>65 Reserve for future commercial use</li></ul></li><li>INDUSTRIAL ZONE (RGB 153,128,51)<ul style="list-style-type: none"><li>67 Heavy<ul style="list-style-type: none"><li>67.2.1 Boat Building and Repair - Dockyard</li><li>67.2.2 Boat Building and Repair - Dockyard (KFC)</li><li>67.3 Heavy Industrial Plots</li></ul></li><li>68 Light<ul style="list-style-type: none"><li>68.2.1 Dockyard Workshops (KFC)</li><li>68.2.2 Dockyard Workshops</li><li>68.2.3 Light Workshops</li><li>68.3 Makers Space</li></ul></li></ul></li><li>AGRICULTURE AND MARICULTURE (RGB 0,76,0)<ul style="list-style-type: none"><li>69 Land<ul style="list-style-type: none"><li>69.2 Organic Farmland</li><li>69.3.1 Kudafaree Nursery</li><li>69.3.2 Kudafaree Native Species Nursery</li><li>69.4 Agriculture Lease Land</li><li>69.5-69.9 Others</li></ul></li><li>70 Water (62,145,165)<ul style="list-style-type: none"><li>70.2 Mariculture / Coral Farming</li></ul></li></ul></li><li>TOURISM (RGB 191,127,255)<ul style="list-style-type: none"><li>71.1 Guest House &amp; FNB</li><li>71.2 Guest House &amp; FNB (KFC)</li></ul></li><li>OPENGREEN BUFFER AREAS (RGB 0,127,0)<ul style="list-style-type: none"><li>74 Green Buffer Areas</li><li>75 Jungle area</li></ul></li><li>ENVIRONMENTAL PROTECTION ZONE (EPZ) (RGB 7,131,83)</li></ul></li></ul>

<b>ROAD NETWORK</b>
HARBOR LOADING / UNLOADING 15M (RGB 233,222,211)
2.8M SERVICE ROAD
2.2M VESHI FAHI STREET
2M-3M VAAKURIMAGU (PEDESTRIAN)



TYPE	COUNT (APPROX.)
SMALL TREES	1483
LARGE TREES	81

	PALM TREES	XXX	m <sup>2</sup>
	ISLAND GREEN AREA	26,242	m <sup>2</sup>
	TOTAL LAND AREA		

**NOONU KUDAFARI COUNCIL | MALDIVES**  
**UNOFFICIAL EXISTING TREES MAPPING**

REFERENCE FROM BASELINE SURVEY & DRONE SURVEY - NOVEMBER 2022

EXISTING LAND BEZ AREA	8368	m <sup>2</sup>
CONSERVED GREENAREAS	5063.04	m <sup>2</sup>

12 METER ABOVE TREES