

## GN. FUVAHMULAH HOADHANDU FOOTBALL STADIUM LIGHT

### SUMMARY

NO.	DESCRIPTION	AMOUNT (MVR)
1	PRELIMINARIES	
2	EARTH WORKS	
3	CONCRETE	
4	METAL WORKS	
5	ELECTRICAL & SPECIFIC INSTALLATIONS	
<b>TOTAL</b>		
GST (8%)		
<b>GRAND TOTAL</b>		

#### In Words

CONTRACTOR :

SIGNATURE :

DURATION :

DATE :

# STADIUM LIGHT POST

Republic of Maldives

## BILL OF QUANTITIES GENERAL CONSTRUCTION WORKS

Item	Description	Qty	Unit	Rate	Amount (MVR)
1.0	<b><u>PRELIMINARIES</u></b>				
1.1	<p><b>General Notes</b></p> <p><b>Abbreviations</b></p> <p>m - meter            No - numbers            m<sup>3</sup> - cubic meter            m<sup>2</sup> - square meter            Lm - Linear meter            Kg - Kilograms            t - tonnes            incl - including            mm - millimeter            dia - diameter            SS - Stainless Steel            GI - Galvanised Iron</p> <p><b>General:</b></p> <p>a The General Contractor is to provide any sum he considers necessary in complying with the following requirements and terms. The monetary value of any item which is left unpriced shall be deemed to have been included in the rates of each item of work in the Bill of Quantities.</p> <p>b The Contractor shall be deemed to have satisfied himself as to the correctness and sufficiency of his tender for the works and of the rates and prices stated in the priced Bill of Quantities, which rates and prices shall be inclusive of all ancillary and other works and expenditure whether separately or specifically mentioned or described in the Contract Documents or not, which are either indispensably necessary to carry out and bring completion the works described in the Contract Documents or which may contingently become necessary to overcome difficulties' before completion.</p> <p>c Where any clause or item in these Bills of Quantities is not priced, it shall be deemed that the cost of such clause or item has been allowed elsewhere within these Bills of Quantities. No subsequent claim against such item or clause will be considered.</p> <p>d The Bill of Quantities are prepared and grouped in sections. Within each section the items are set out in trade order.</p> <p>e The General Contractor is requested to check the number of pages of the Bill of Quantities and if any page is missing or duplicating or if any figure is indistinctive, he shall notify the Project Manager who will rectify the matter. No claims for loss consequent upon the General Contractor's failure to observe this Clause will be considered.</p> <p>f "Approved equivalent" shall mean material, product, component or assembly having a similar standard of quality and identical level of performance in all respect of the materials and/or product specified. The contractor shall ensure such instruction adhered when submitting the sample for approval. Any sub standard materials and performance will be subjected to a cost reduction by <b>Engineer</b></p> <p>g Wherever the term "Allow" occur in the Generally and Preliminaries, the General Contractor shall provide cost/price on such items. The cost / price indicated on such items will be at the General Contractor's risk and no adjustment in relation thereto will be made at the Final Account, except where such adjustment is expressly provided for in the Conditions of Contract. In the absence of any price against such items, the cost of such items will be deemed to be included on the other rates contained in the Bill of Quantities.</p>				

Item	Description	Qty	Unit	Rate	Amount (MVR)
h	Wherever the term "Provisional Sum" occur in the Main Works, the General Contractor shall provide cost on such items. The cost indicated on such items will be subject to remeasurement based on the actual quantity installed. Provisional Sums may be used in whole or in part as directed in writing by the Project Manager. The balance shall be deductible from the Contract Price				
i	All items in the Bill of Quantities shall be priced in detail not grouped together as total prices for any trades or sections.				
j	The items of work and corresponding quantities indicated in the Bill of Quantities should remain unchanged.				
k	The General Contractor shall be deemed to have taken into account all possible inclement weather when preparing his Bid and shall not be entitled to extra payment by reason of the occurrence or effect of excessive wind, typhoon or other meteorological phenomena.				
l	The General Contractor shall be responsible for checking all drawings issued to him and if he finds discrepancies in the drawings he shall, before proceeding with the works, inform the Engineer of such discrepancies and the Engineer's ruling shall be taken as final. No claims by the Contractor for any extra costs incurred as a result of discrepancies in the Contract Drawings will be entertained if he fails to inform the Architect of such discrepancies before proceeding with the Works.				
m	The rates and prices inserted shall be deemed to have allowed for compliance with the above stipulations and other documents forming part of the Contract. All rates and prices entered against items measured and described in the Bills of Quantities shall be for the full inclusive value of the finished work described or shown on the Drawings or stipulated in the Specifications				
<b>1.2</b>	<b><u>SITE MANAGEMENT</u></b> Allow for all on & off site management cost including cost of site staff, temporary services such as electricity water and telephone, provide and maintain necessary documents and all management related cost.	1.00	Item		
<b>1.3</b>	<b><u>GENERAL CLEAN-UP</u></b> Daily removal of debris and unnecessary materials from the project site to the dump site area as designated by the Engineer. The General Contractor shall allow all costs for proper housekeeping of the project site at all times. Making good of the compacted areas during final completion.	1.00	Item		
<b>1.4</b>	<b><u>SIGN BOARD</u></b> Allow for sign board	1.00	Item		
<b>1.5</b>	<b><u>SETTING OUT WORK</u></b> Setting out of all flooring, paving, planting areas & bends as shown in the drawings including the setting out work for laying Electricity network where applicable as per the specifications and levels provided by the authorized statuaries.	1.00	Item		
<b>TOTAL OF BILL No: 01 - Carried over to summary</b>					

Item	Description	Qty	Unit	Rate	Amount (MVR)
<b>2.0</b>	<b><u>EARTH WORKS</u></b>				
a	Rates for excavation shall include for: leveling, grading, trimming, compacting to faces of excavation, keep sides plumb, backfilling, consolidating, additional working space and disposing surplus soil, Keeping all excavations free from the storm or percolating water as required or directed to keep excavation dry etc.				
b	Excavation quantities are measured to the faces of concrete members. Rates shall include for all additional excavation required to place the formwork/shuttering and dewatering the trenches for the required days.  Rates should include excavation and removal of any bedrocks if necessary				
c	Rates for filling/backfilling shall include; spreading, levelling and compacting, decrease in bulk volume.				
d	Clearing site is measured area on plan				
e	Unless otherwise described in the Bills of Quantities, excavation shall be deemed to commence at existing ground level.				
f	Ground needs to be compacted to the density required by the Engineer				
g	Rates for waterproofing system shall include for screeding, dressing around and into pipes and outlets, and or providing the necessary agreed (accepted local) years guarantee for workmanship and materials and testing by flooding.				
h	Rate for damp proof membrane shall include for laying, dressing around, sealing all penetration and laps.				
<b>2.1</b>	<b><u>SITE CLEARING</u></b>				
2.1.1	Demolition ,leveling and cleang, waste materials away from the site.	1.00	Item		
<b>2.2</b>	<b><u>EXCAVATION</u></b>				
2.2.2	Footing	90.00	m <sup>3</sup>		
<b>2.3</b>	<b><u>DAMP PROOFING</u></b>				
2.2.3	Damp proof membrane under footing and beam	54.00	m <sup>2</sup>		
<b>2.4</b>	<b><u>WATER PROOFING</u></b>				
	Apply 2 coats of Bituminous paint or similar on all concrete surfaces below ground level in accordance with manufacturer's instructions				
2.4.1	Concrete base	1.00	Item		
<b>2.5</b>	<b><u>EARTH FILLING</u></b>				
	Rates shall include for levelling, grading, trimming and compacting.				
2.5.1	Back filling for footings.	47.76	m <sup>2</sup>		
<b>TOTAL OF BILL No: 02 - Carried over to summary</b>					

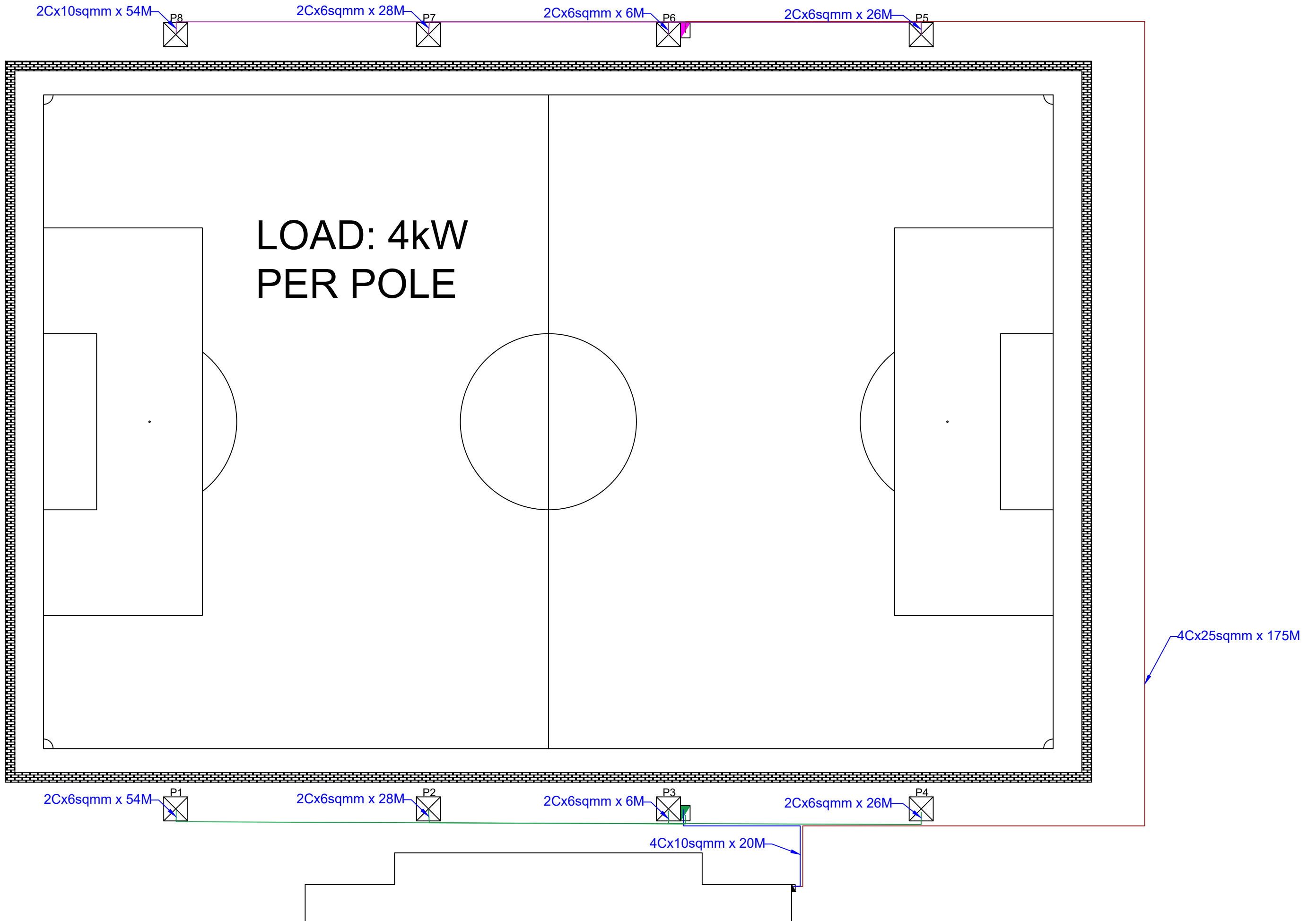
Item	Description	Qty	Unit	Rate	Amount (MVR)
<b>3.0</b>	<b><u>CONCRETE WORKS</u></b>				
a	Rates shall include for: placing in position; making good after removal of formwork, mortar touch up to all concrete and casting in all required items; additional concrete required to conform to structural and excavated tolerances.				
b	Concrete is measured net without deduction for the volume of reinforcement.				
c	All concrete admixtures shall be administered in accordance with manufacturer's recommendations.				
d	Mix ratio for reinforced concrete shall be 1:2:3 and lean concrete shall be 1:3:6 by volume				
e	Rates for concrete shall include; mixing, depositing, hoisting or pumping and placing in position, compacting by suitable means, packing and tamping around reinforcement including mechanical vibration, curing and protection, removing or cutting rebates, grooves, chases, mortises and the like, including making good after removal of formwork and casting in all required items, additional concrete required to place the formwork and to conform to structural and excavated tolerances.				
f	Concrete Quantity is measured to the edges of concrete foundation members. Rates shall be inclusive for any additional concrete required to place the formwork.				
g	No allowance has been made in the weight of steel reinforcement for rolling margin, tying wires, spacers, chairs and weight of weld etc				
h	Rates for bar reinforcement shall include; allowance for rolling margin, weight of welds and wastage, cutting to length and fabricating including bending to various bend and radii, placing in position, holding and supporting, providing and tying with galvanised steel wire at all intersections, providing and seating of spacer blocks and chairs, providing all necessary laps, bends and anchorages, cleaning by wire brushing.				
i	Rates for formwork shall include for: all necessary boarding, supports, erecting, framing, temporary cambering, cutting, perforations for reinforcing bars, bolts, straps, ties, hangers, pipes and removal of formwork.				
j	Rates for concrete shall include all concrete test according to the engineers instructions.				
<b>3.1</b>	<b><u>LEAN CONCRETE</u></b>				
3.1.1	75mm thick lean concrete to bottom of footing	6.97	m <sup>2</sup>		
<b>3.2</b>	<b><u>REINFORCED CONCRETE</u></b>				
	BELOW GROUND LEVEL				
3.2.1	Footing (2500x2500x750mm)	35.27	m <sup>3</sup>		
3.2.2	Cloumn (750x750x1050mm)	12.60	m <sup>3</sup>		
<b>3.3</b>	<b><u>FORMWORK</u></b>				
3.3.1	Footing	64.00	m <sup>2</sup>		
	Column	26.53	m <sup>2</sup>		
<b>3.4</b>	<b><u>REINFORCEMENT</u></b>				
	<u>Footing</u>				
3.4.1	T10 (T10@ 200mm C/C BW)	2,907	Kg		
	<u>Column</u>				
3.4.2	T10 (T10 @ 150mm C/C)	468	kg		
3.4.4	T12	568	Kg		
<b>TOTAL OF BILL No: 03 - Carried over to summary</b>					

Item	Description	Qty	Unit	Rate	Amount (MVR)
4.0	<p style="text-align: center;"><b><u>METAL WORKS</u></b></p> <p>Rates shall include for: all fabrication work, welding, marking, drilling for bolts including those securing timbers, steel plates, bolts, nuts and any type of washer, riveted work, counter sinking and tapping for bolts or machine screws.</p> <p>Rates shall include for all fittings such as bends, junctions, inspection pieces/plugs, brass floor cleanouts etc. clamps/ structural steel supports as required/directed at site.</p> <p>Rates shall include for all galvanized steel pipe.</p> <p>Rates shall include fabrication of the ladder to the post as per the drawing and specification.</p> <p>Rates shall include for fabrication and erection of temporary supports and fixing into position</p> <p>Rate to include any other works, fixing arrangements including anchor GI bolts and provision of conduits for Electric Cable as per drawing.</p>				
4.1 4.1.1	<p><b>Installaion of GI post</b></p> <p>Poles 4000W per pole 13meter</p> <p>4 head pole lamp Flange 300x400x20mm Inside and outside hot galvanized spray</p>	8.00	item		
<b>TOTAL OF BILL No: 04 - Carried over to summary</b>					

Item	Description	Qty	Unit	Rate	Amount (MVR)
5.0	<p style="text-align: center;"><b><u>ELECTRICAL INSTALLATIONS</u></b></p> <p>Design, provide and install electrical network for the entire building complete in accordance to standards set by the local governing body STELCO. The scope of Electrical work includes the complete electrical installation for the proposed extension building and re-wiring &amp; fixing of light fittings for a part of the existine buildinge.</p> <p>The following items and description and the drawings are given as a guidance as to the nature of the information required to be returned by the</p> <p>The cost shall include for: screws, nails, bolts, nuts, standard cable fixing or supporting clips, brackets, straps, rivets, plugs and all incidental accessories</p> <p>The cost shall also include for trenching including: excavation, maintaining faces of excavations, backfilling, compaction, appropriate cable covers, warning tape and disposal of surplus spoil</p> <p>Rates for electrical isolators, conduits, fittings, equipment and similar items shall include for: all fixings to various building surfaces</p> <p>A point wiring for power points is measured (regardless of 1 gang, 2 gang etc) as one point for each socket outlet; other end of wire is not included in the quantity.</p> <p>The Bidders are requested to refer the Preamble Notes, General notes, Specifications, and other relevant information prior to pricing of the following items.</p> <p>Rate shall include for necessary chasing, trenching, conduits, cables, cable trays, fittings and clips, cutting holes and chases in brick work/ block work/ concrete work complete with all necessary accessories such as sockets, connections, cable glands and boxes hardware clips, etc., for proper installing and lavinø of cables.</p> <p>All under ground cables directly buried in ground to be properly laid in ground trenches and covered with cable tiles. Rate for under ground cables shall include for all necessary excavation, sand layers, cable tiles, warning strips and back filling with approved quality earth properly compacted.</p> <p>Rates for all electrical panels shall include for supply and installation of all necessary MCCB's, MCB's, EFR's, ELCB's auxiliary contacts, Volt meters, ammeters, kWh meters, indicator lamps, selector switches, inter connecting copper bus bars, inter locks aligning and grounding the panel, interconnections, internal wiring instrument wiring loops, connecting to switch gears, cable gland lugs, steel channels and necessary hardware fixing and insulating materials with fully enclosed metal clad panels and distribution boards where ever necessary and complete as shown in drawing and comply with the specifications, and as per relevant latest B.S. standards and I.E.T. regulations and all complete to working order to the approval of the Engineer.</p> <p><u>Point wiring</u> Rates shall include for all conduits, conduit fittings, clips, earth cables, draw wire, wiring accessories, hardware fixing, insulating materials, making holes and chases in brick work, concrete work...etc. and making good the same.</p> <p>Rates for socket outlets shall be inclusive of cables, switch socket outlets of correct rating, sunk boxes etc.</p> <p><u>Fittings</u></p>				

Item	Description	Qty	Unit	Rate	Amount (MVR)
	<p>All the light fittings to be provided under this Contract shall be of the best quality without any defects to the complete satisfaction of the Architect/Engineer.</p> <p>Rates shall also include for supply and installation of all the fittings complete with all the accessories, such as starters, bulbs, chokes, power factor correction capacitors...etc</p> <p>Rates shall also include for all the fixing material such as rawl plugs, hooks, chains, flexible cords...etc.</p> <p>Contractor shall get approval from the Engineer for Electrical fittings before installation.</p> <p>All lighting and power circuits shall include earth cable of 2.5mm2 unless otherwise specified</p> <p>Rate shall include for cutting ,trimming , dressing , connecting cables ,cutting holes &amp; chase holes in brick work and connecting cables to supply points and equipments complete with all accessories such as sockets, connectors, conduits, cable trays, cable glands,cable lugs, and boxes, hardware clips , fixing etc</p>				
5.1	<b>MAIN CONNECTION AND MAIN POWER DISTRIBUTION</b>				
	Supply and installation of Main power distribution cabinet for 240K including meter to be located as directed by Engineer. Rate shall include for Main connection charge, earthing,all other accessories and testing and similar to complete.Rate shall include for concrete base with wall and painting.				
5.1.1	connection charge, earthing,all other accessories and testing and similar to complete.Rate shall include for concrete base with wall and painting.				
5.1.2	1 Main Power Distribution Cabinet for 44KW 100A circuit breaker 2x63A 3P MCB, 2X40A 3P MCB O/G feeders Outdoors	1.00	Nos		
5.20	<b>SINGLE POWER DISTRIBUTION</b>				
5.2.1	Supply and installation of Single power distribution cabinet for 69K of each post, as directed by Engineer. Rate shall include for Main connection charge, earthing,all other accessories and testing and similar to complete.Rate shall include for concrete base with wall and painting.				
5.2.2	Sub Distribution Box 63A, 3P (outdoors) 1x63A 3P I/C MCB, 4x32A Single Pole MCB O/G feeder	2.00	Nos		
5.2.3	Single Phase Pole DB (Outdoors) 1x32A SP I/C MCB. 2x40A,30mA ELCB, 4x10A 1P MCB	8.00	Nos		
5.2.4					
5.30	<b>ELECTRICAL CABLE LAYING</b>				
5.3.1	4C x 10sqmm XLPE/PVC cable	20.00	m		
	2C x 6sqmm XLPE/PVC cable	175.00	m		
5.3.2	2C x 10sqmm XLPE/PVC cable	54.00	m		
	4C x 25sqmm XLPE/PVC cable	175.00	m		
5.3.3					
5.40	<b>LAMP POST LIGHTS</b>				
5.4.1	LED floodlight 1000W,5000K Driver,AC100-240V Beam Angle 30Deg	32.00	nos		
5.4.2	Light Cables 2Cx2.5sqmm	416.00	m		
	Earth Cable 6sqmm	130.00	m		
	Earth Rod & Eath Clamps	8.00	Nos		
5.50	<b>TESTING AND COMMISSIONING</b>				
5.5.1	Test the entire system as per STELCO regulations	1.00	Item		
<b>TOTAL OF BILL No: 05- Carried over to summary</b>					

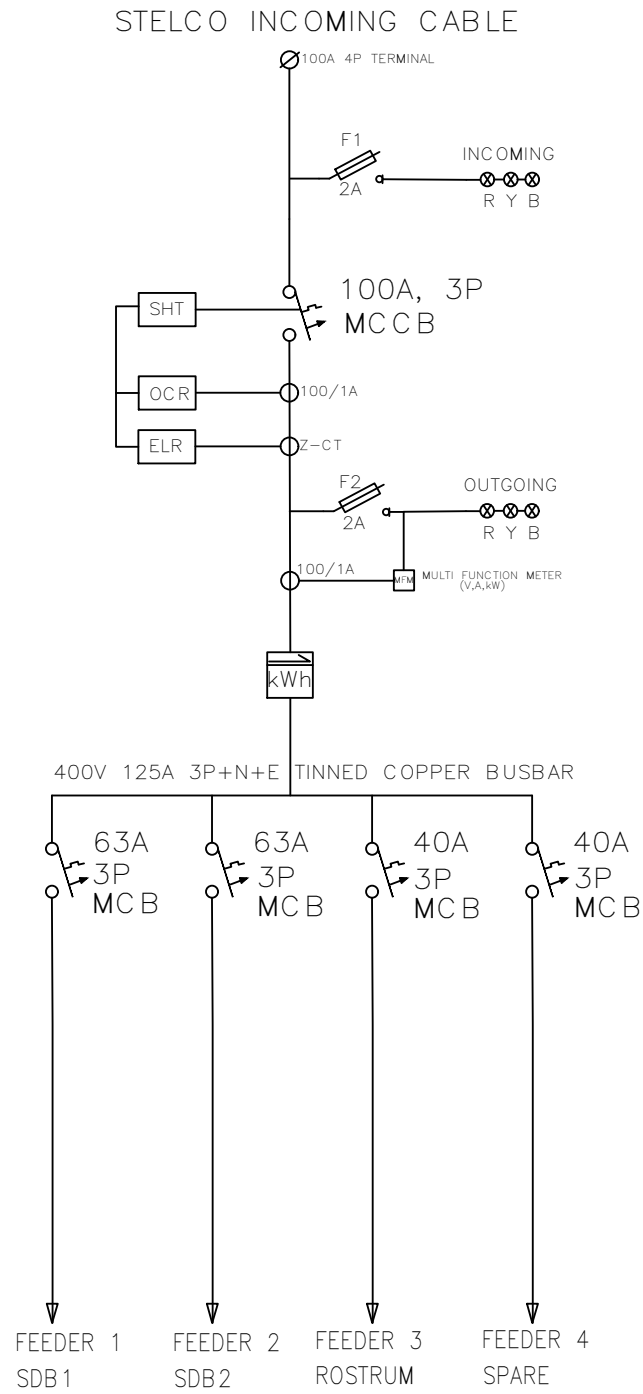




1 2 3 4 5 6 7 8 9

A  
B  
C  
D  
E  
F

A  
B  
C  
D  
E  
F



					PROJECT	TITLE	Page: -/-
						MAIN POWER DISTRIBUTION PANEL	
						SLD	T.Sheet: -
Rev	Date	Detail	Drawing by:	Checked by:			
	24.05.2024	PRELIM. DESIGN					

1 2 3 4 5 6 7 8 9

A

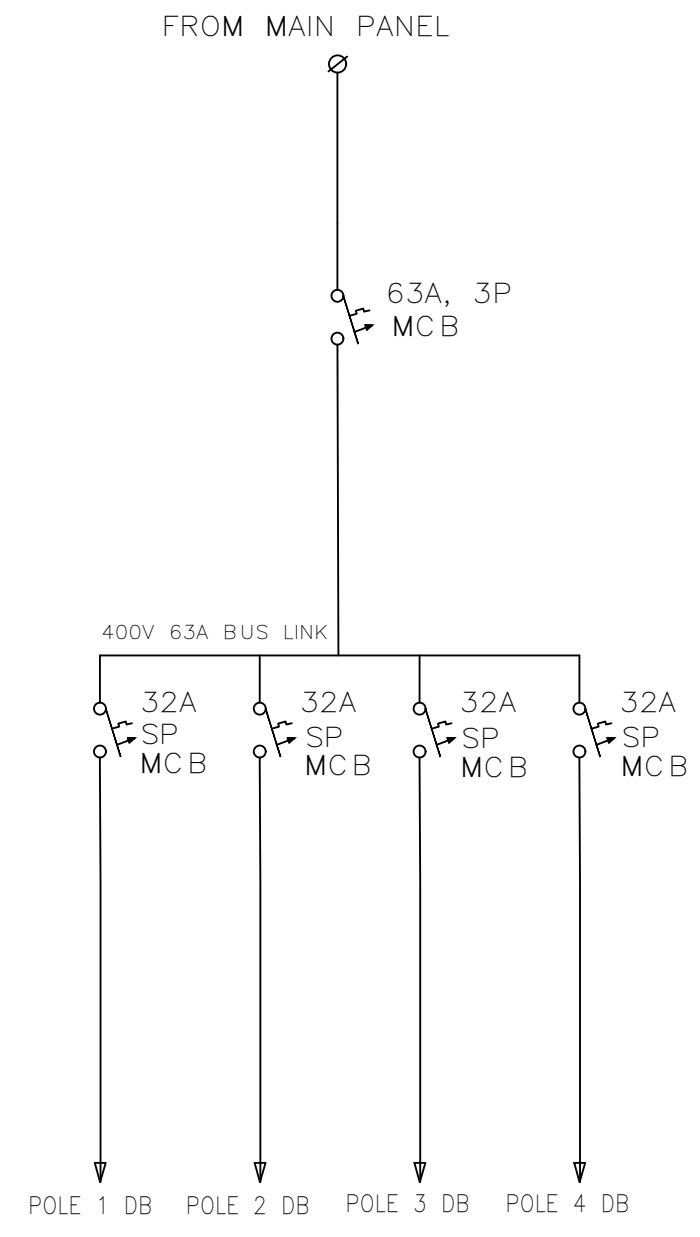
B

C

D

E

F

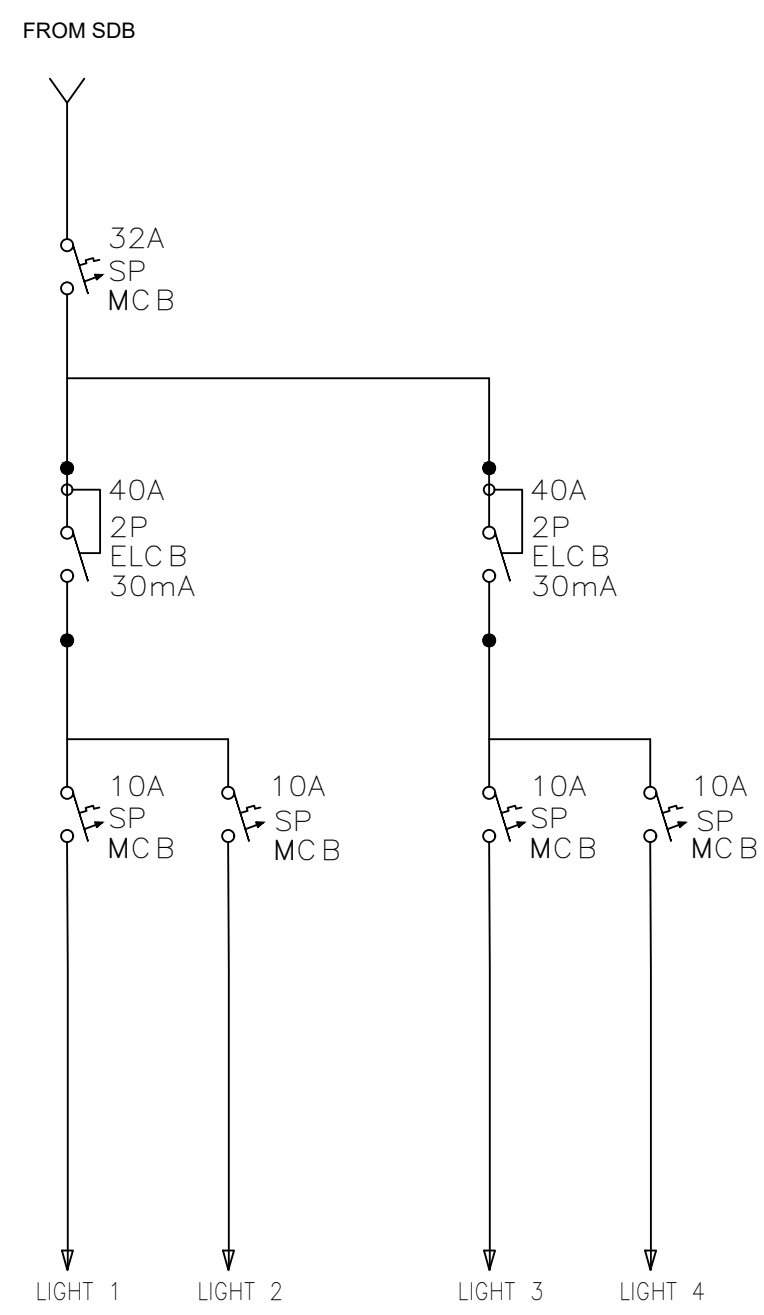


					PROJECT	TITLE	Page: -/-
						TYPICAL SDB DESIGN	T.Sheet: -
Rev	Date	Detail	Drawing by:	Checked by:			
	24.05.2022	PRELIM. DESIGN	S. HAMEED (120011)	A. NIYAZ (10462)			

1 2 3 4 5 6 7 8 9

A  
B  
C  
D  
E  
F

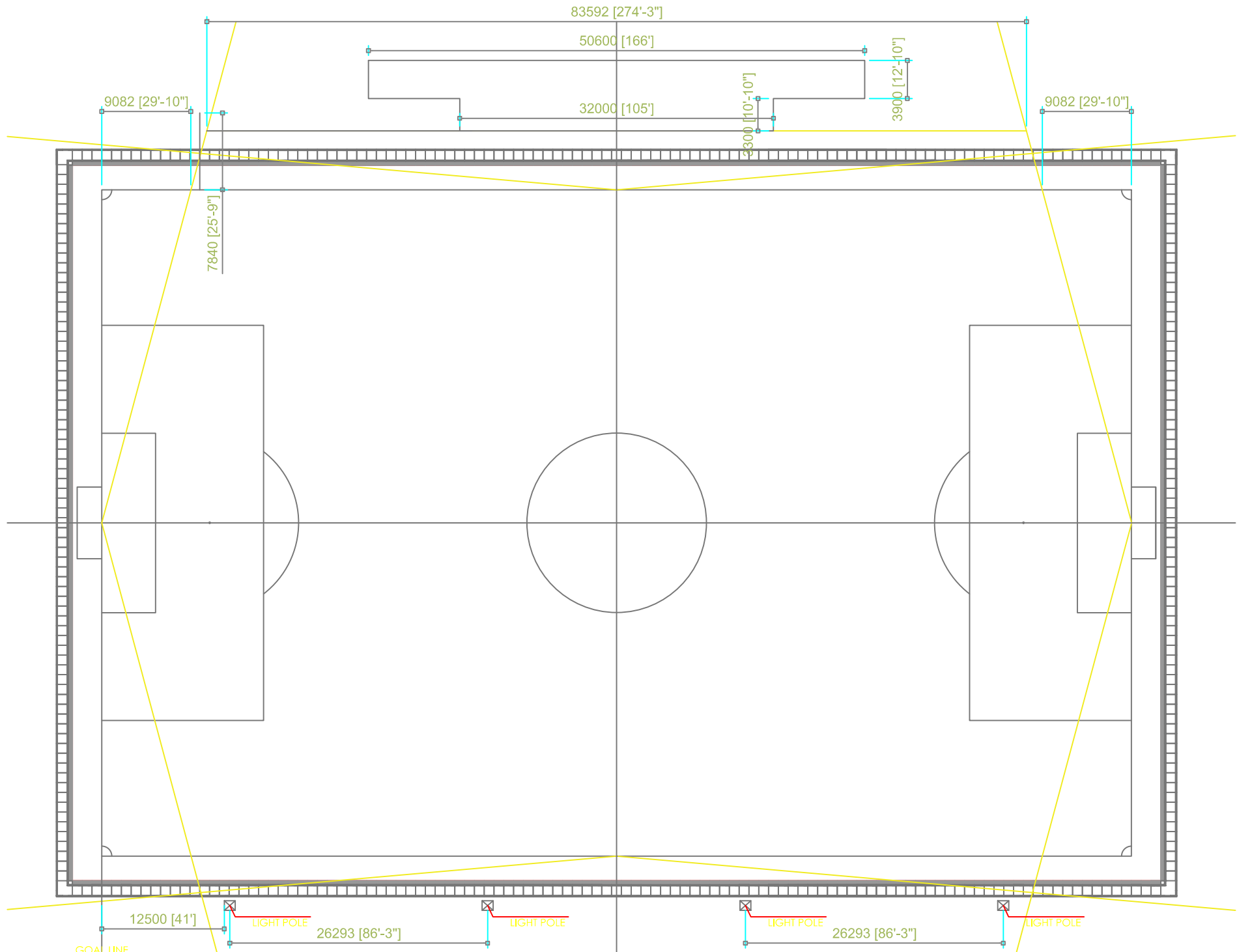
A  
B  
C  
D  
E  
F



					PROJECT
24.05.2024	PRELIM DESIGN	S. HAMEED (120011)	A. NIYAZ (10462)		
Rev	Date	Detail	Drawing by:	Checked by:	

TITLE	TYPICAL POLE DB
Page: -/-	T.Sheet: -

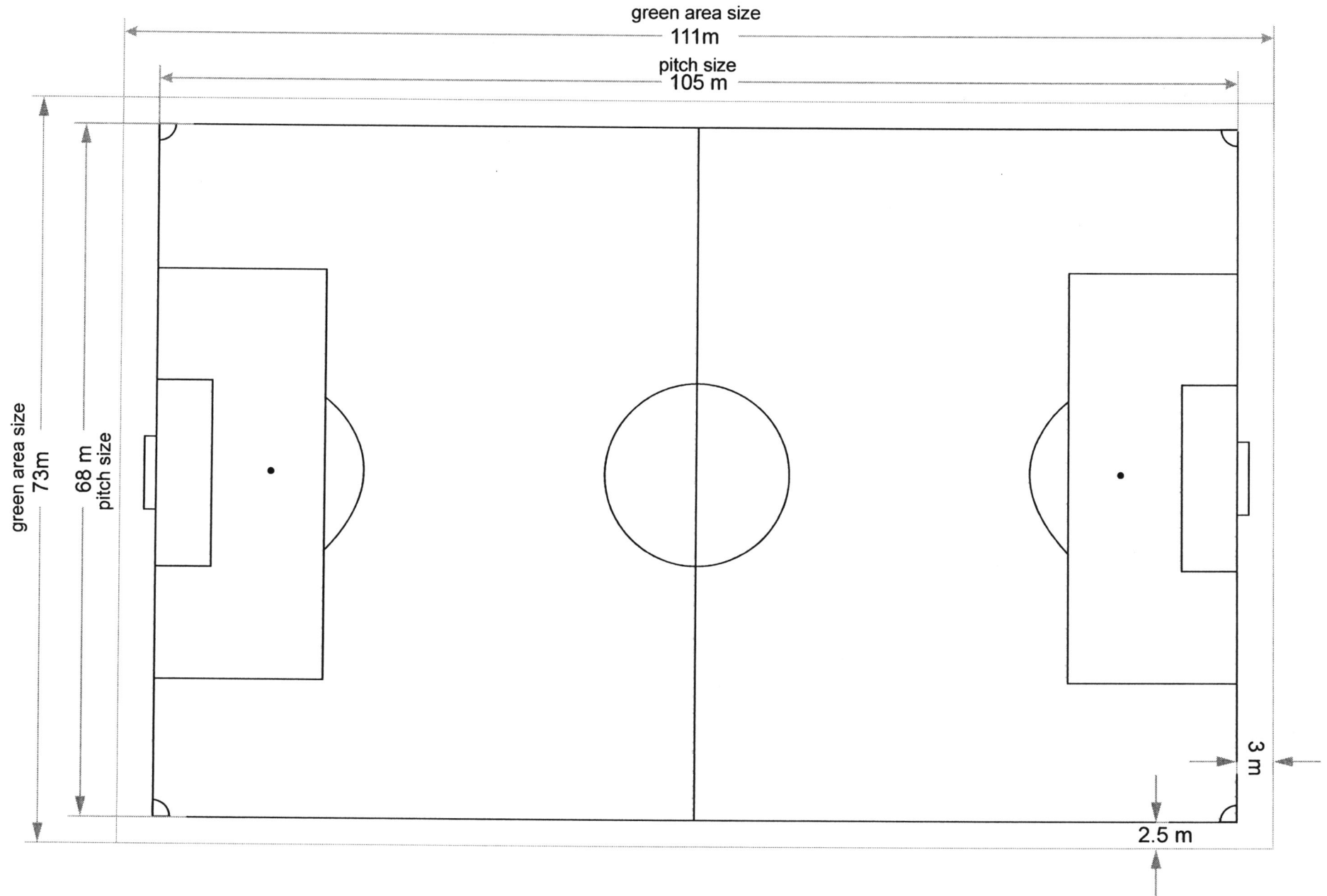


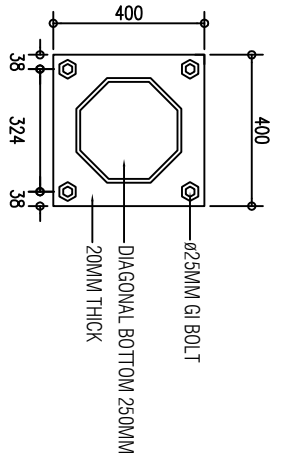


**STANDARD ARTIFICIAL TURF FULL PITCH PLAN**

POSITIONING OF LIGHT POLES WILL BE MIRRORED TO THE OTHER SIDE OF THE PITCH

# STANDARD FOOTBALL GROUND SIZE

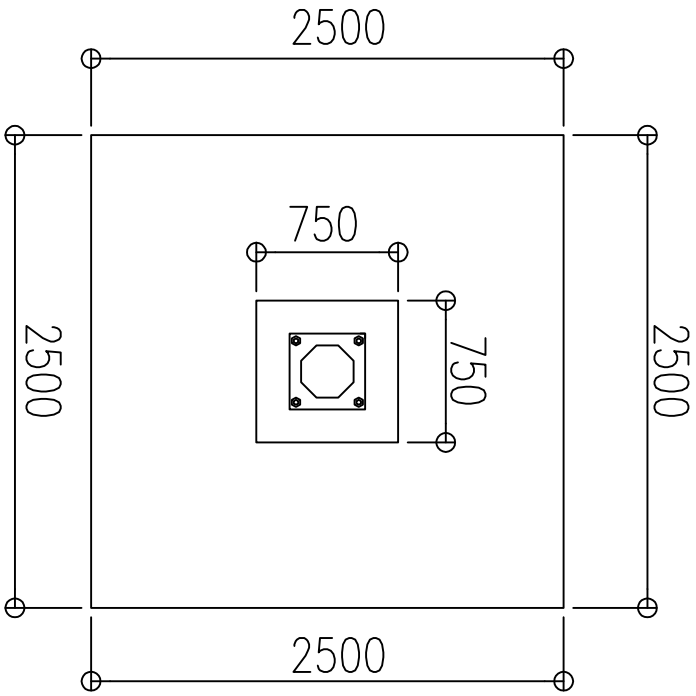




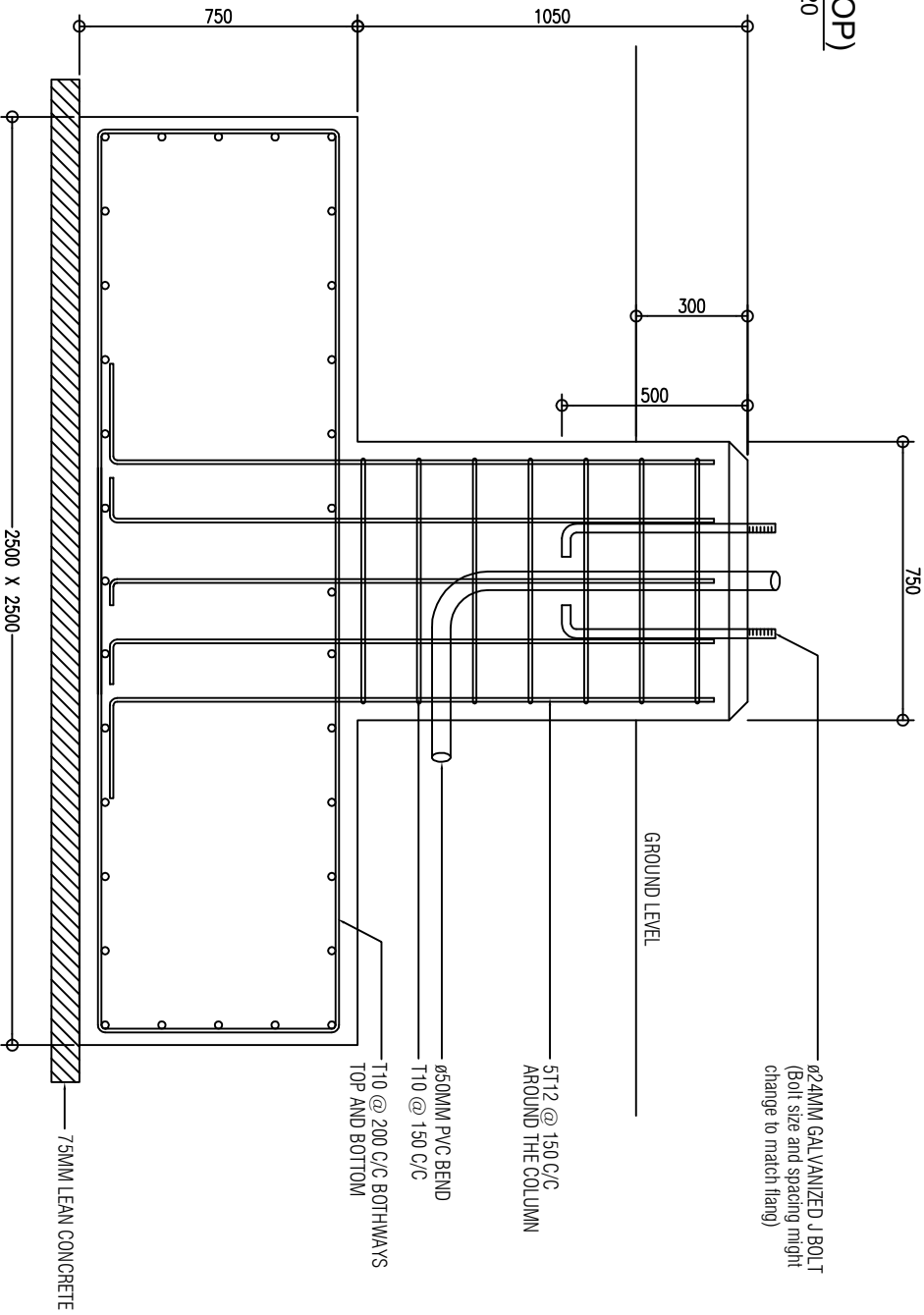
**MAST FLANG (BOTTOM)**  
SCALE - 1:20



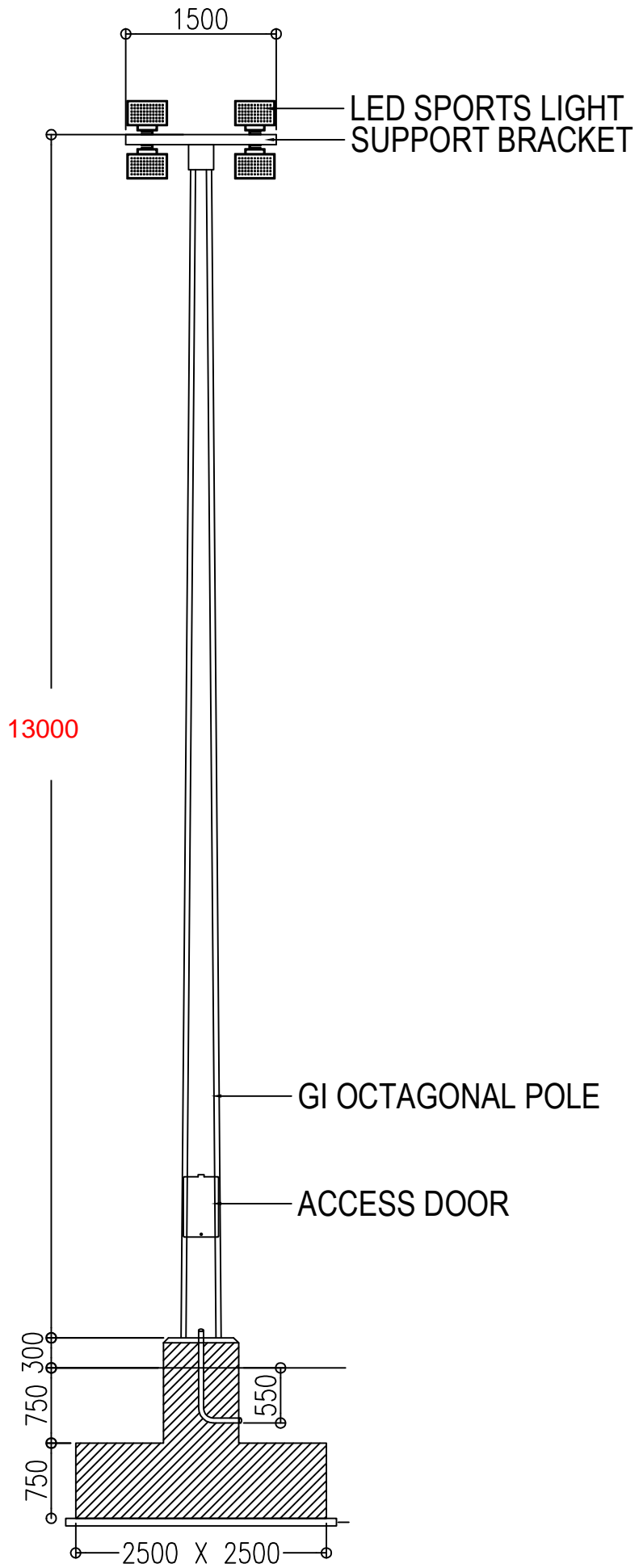
**MAST (TOP)**  
SCALE - 1:20



**PAD PLAN LAYOUT**  
SCALE - 1:50



**PAD DETAILS**  
SCALE - 1:20



ELEVATION