

| Attendance Device Minimum Specification | |
|---|------------------------------------|
| Fingerprint Capacity | 8000 |
| Card Capacity (RFID) | 10,000 |
| Record Capacity | 200,000 |
| Display | 3.5-inch Screen |
| Communication | TCP/IP, RS232/485, USB host/Client |
| Power Supply | DC 12V 1.5A |
| Verification Speed | ≤ 1 sec |
| Software | ZK |

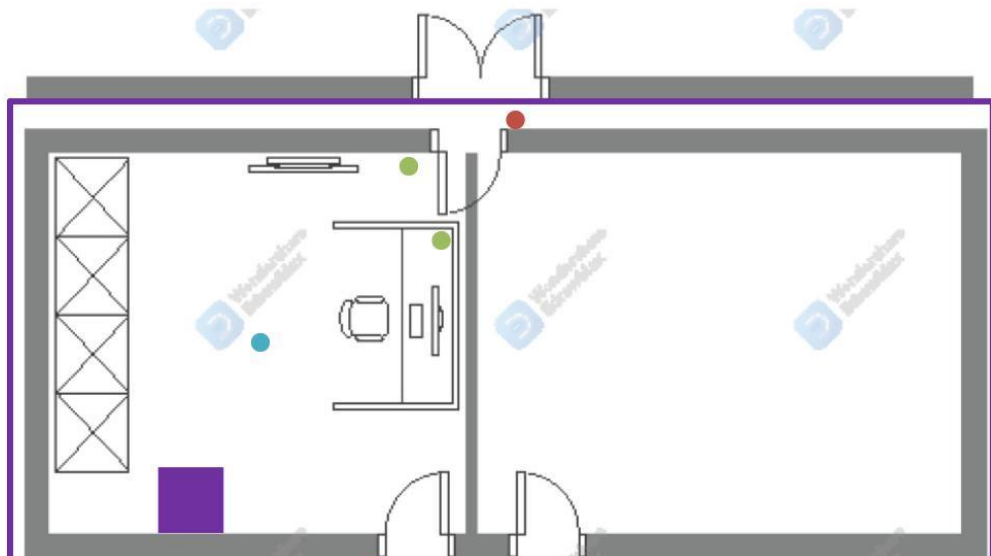
| Door Access Device Minimum Specification | |
|--|--|
| Reader Terminal | |
| Credential Support | RFID Card Only (No fingerprint reader or number pads needed) |
| Card Processing time | less than 1 Sec |
| Power failure | Fail-Safe/Fail secure mode |
| Backup Power | Battery backed up power supply unit |
| Exit Button Type | Touchless button |
| Card capacity | 10,000 |
| Log/record Capacity | 200,000 |
| Communication | TCP IP / Ethernet 10/100/1000 |
| Supported software | ZK Access 3-5 |

HPSN Network Layout

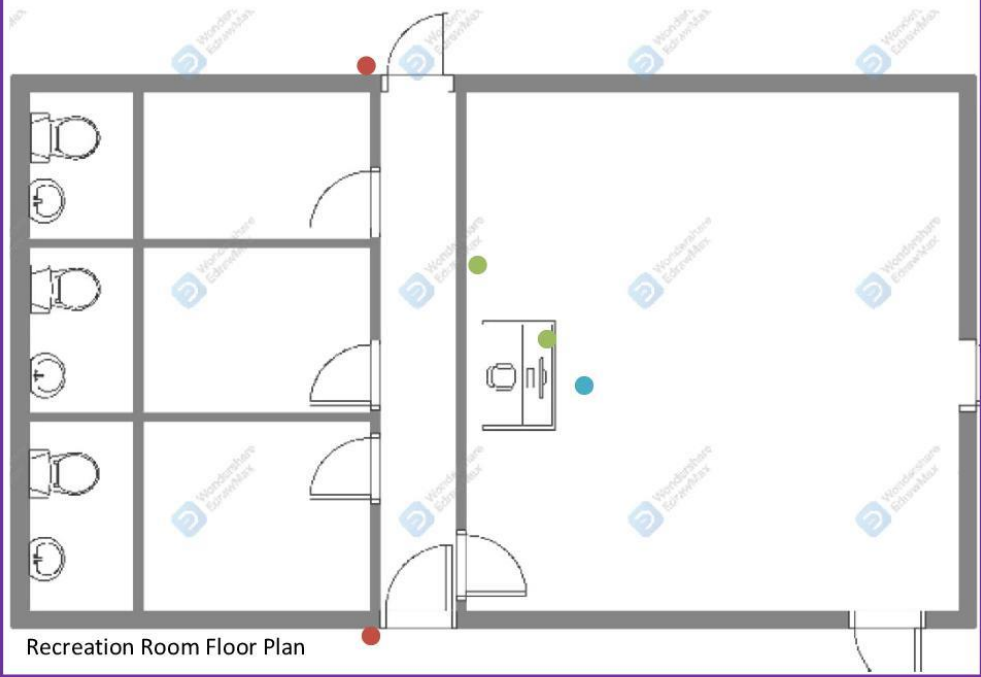
- Computer Network point
- Door Access Devices
- WIFI (Ceiling Points)
- Printer/Scanner
- Attendance Device
- Access Switch 1(48P SW)
- Access Switch 2(24P SW)
- Access Switch 3(16P SW)



Office Floor Plan



Security post Floor Plan



Recreation Room Floor Plan

