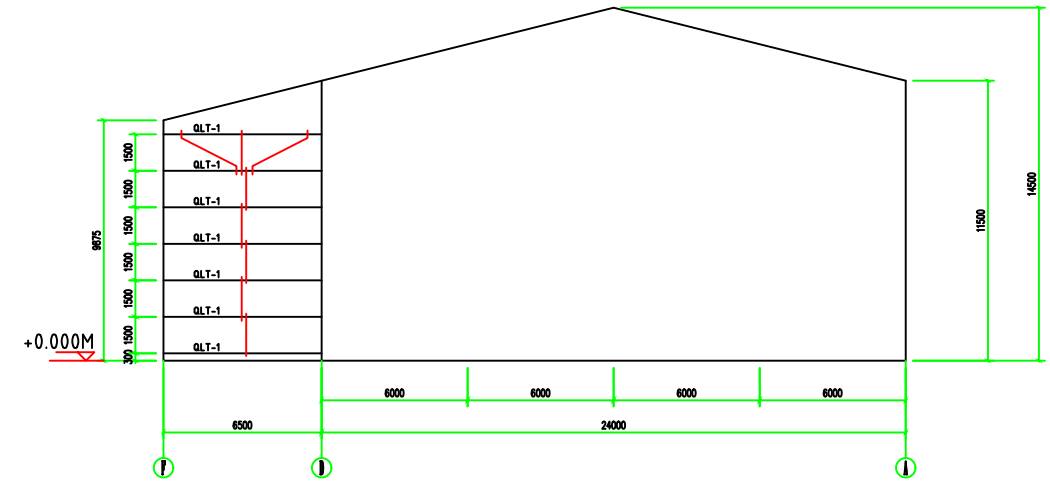
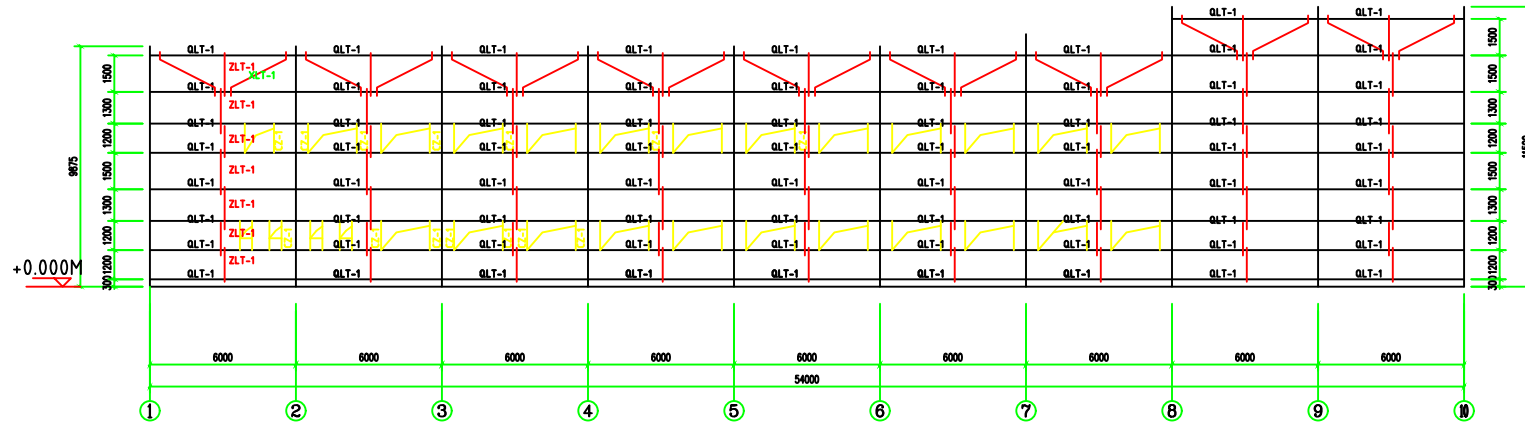


A axile wall purlin layout



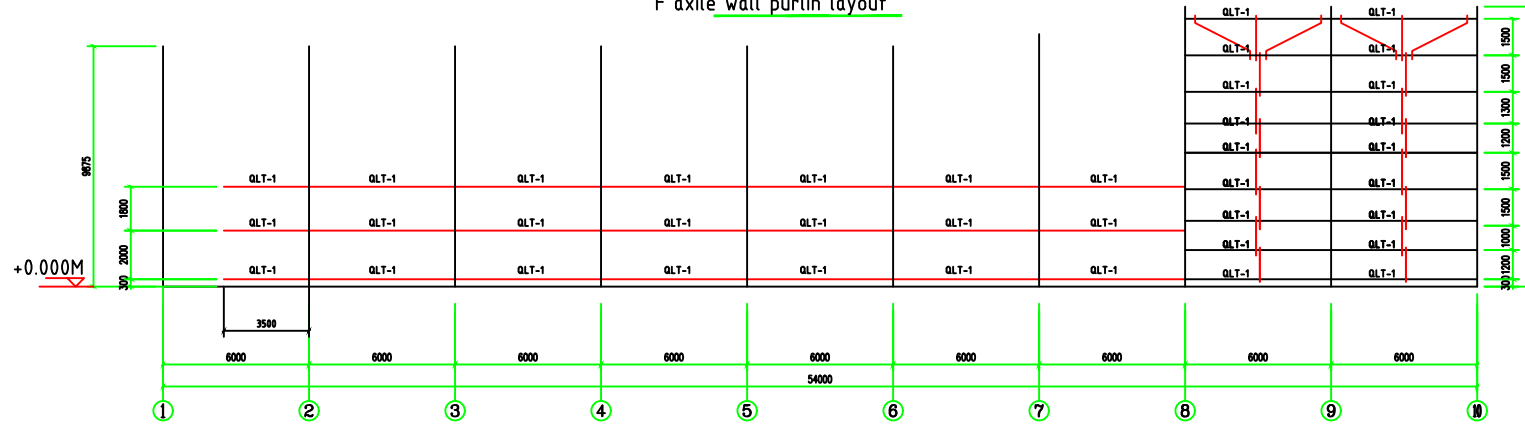
9 axile wall purlin layout



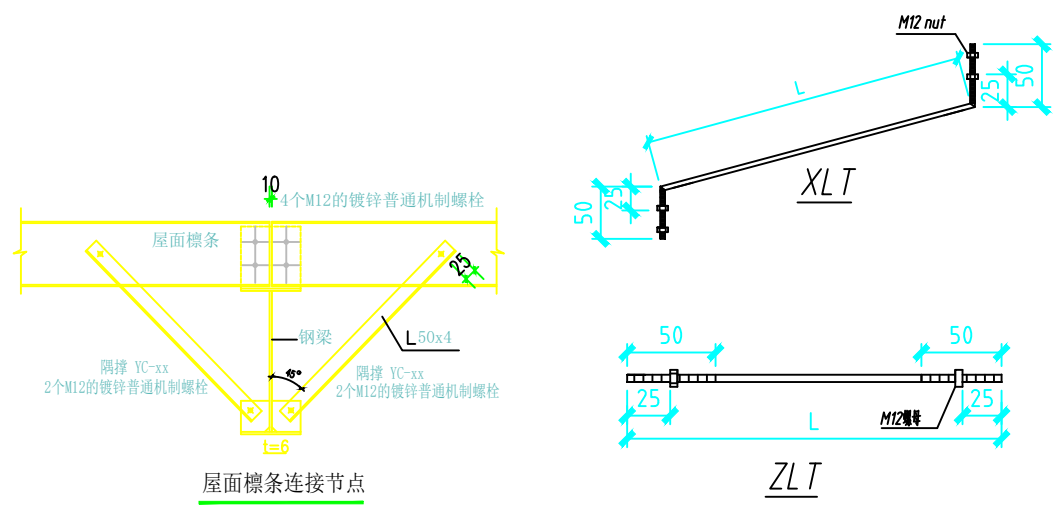
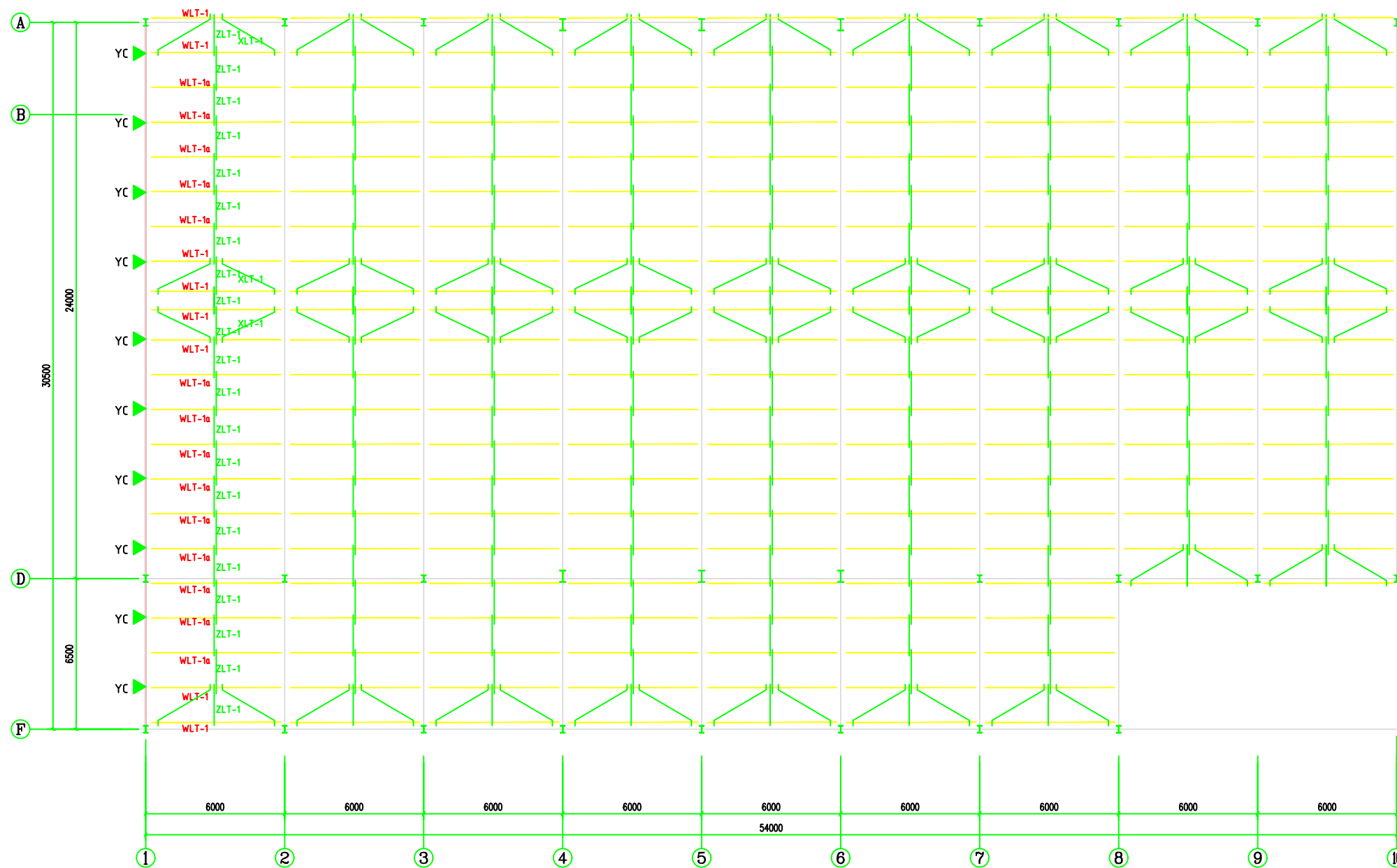
F axile wall purlin layout



1 axile wall purlin view



D axile wall purlin layout



roof purlin layout

- Remark: 1. roof purlin: WLT:C200×70×20×2.5 ,Q235B (galvanized);
 2. ZLT.XLT use $\phi 12$ steel bar
 3. YC use L50×4 angle steel