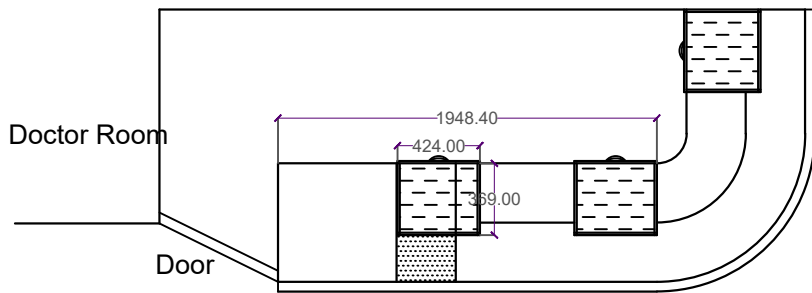
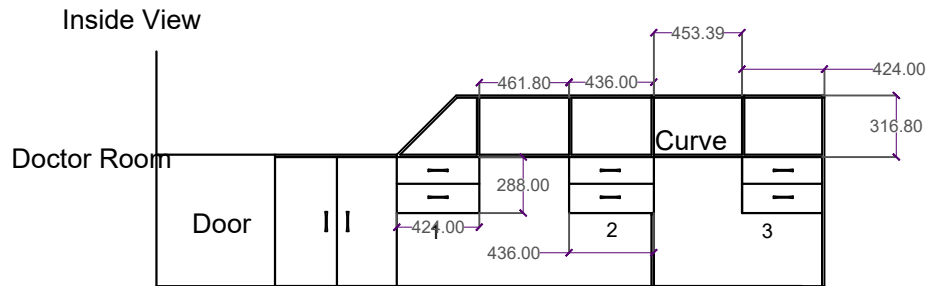
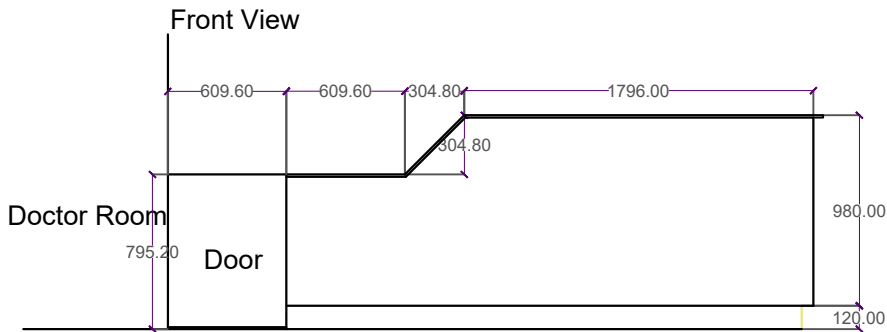
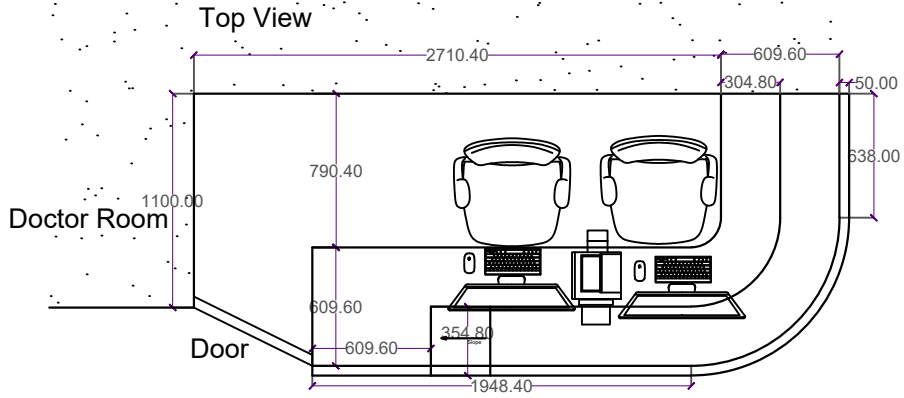


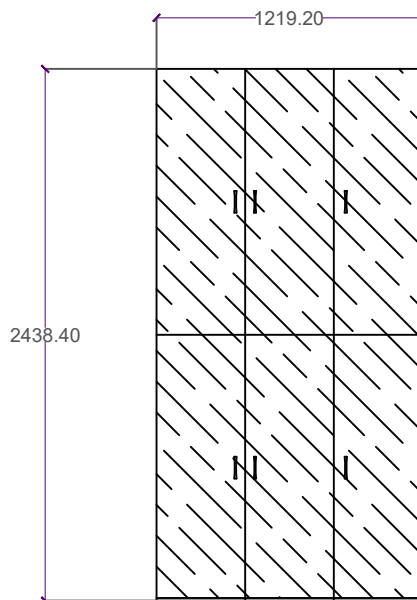
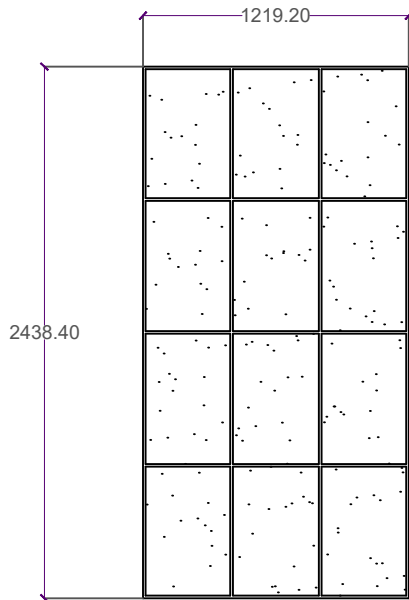
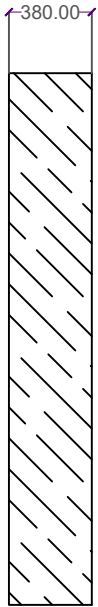
# Reception Counter



### Cupboard (C1)

Side View

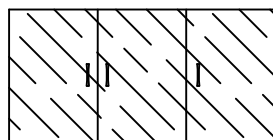
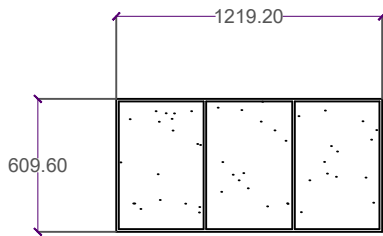
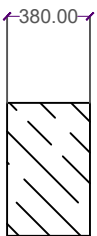
Front View



### Cupboard C2 (wall mount)

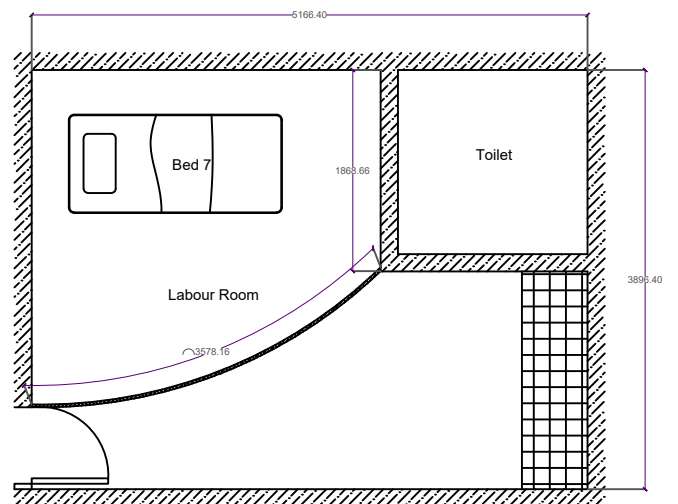
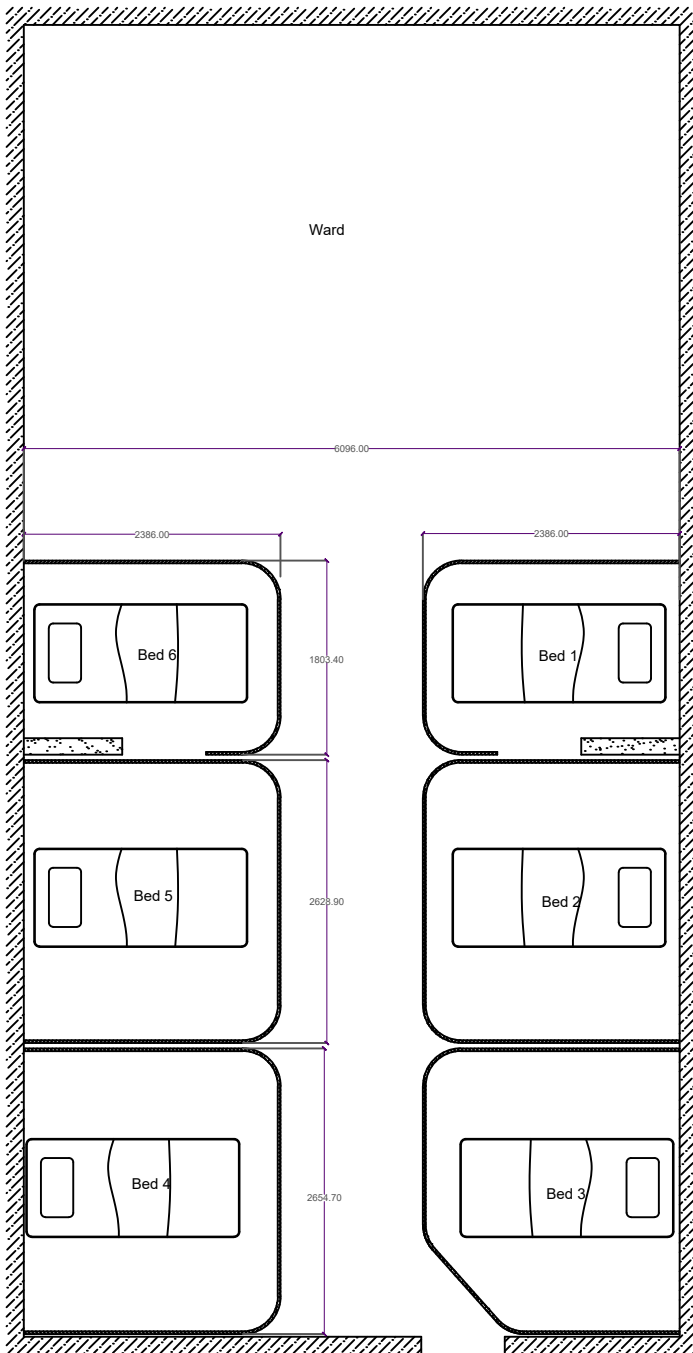
Side View

Front View



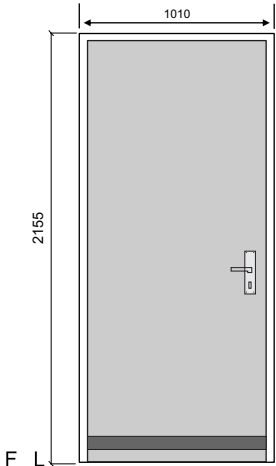
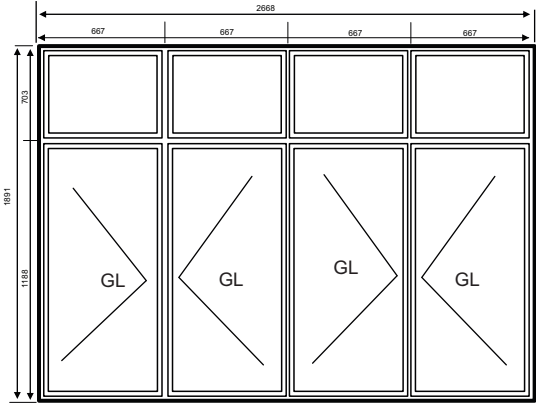
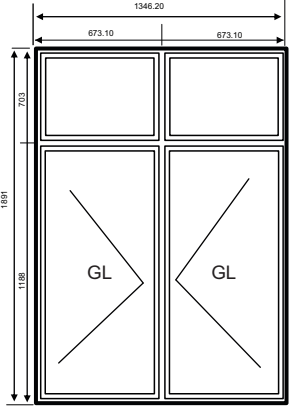
Ward and Labour Room Bed Curtain

Top View





# DOORS AND WINDOWS SCHEDULE

| SYMBOL      | D1  | W1   | W2  |
|-------------|---|--|---|
| ELEVATION   |  |  |  |
| DESCRIPTION | 40MM THICK OPENABLE ALUMINUM DOOR   | 40MM THICK OPENABLE ALUMINUM FRAMED DOOR   | 40MM THICK OPENABLE ALUMINUM FRAMED DOOR  |
| FRAME       | 120MM ALUMINUM FRAME  | 120MM ALUMINUM FRAME   | 120MM ALUMINUM FRAME  |
|             | 80 MICRON WHITE POWDER COATED   | 80 MICRON WHITE POWDER COATED  | 80 MICRON WHITE POWDER COATED   |
| HARDWARE    | DOOR CLOSER<br>TOILET LOCK x 1<br>BUTT HINGE<br>KICKER                            |  |   |
| NOTE        | ALL MEASUREMENT TO BE CHECKED ON SITE   | ALL MEASUREMENT TO BE CHECKED ON SITE  | ALL MEASUREMENT TO BE CHECKED ON SITE   |