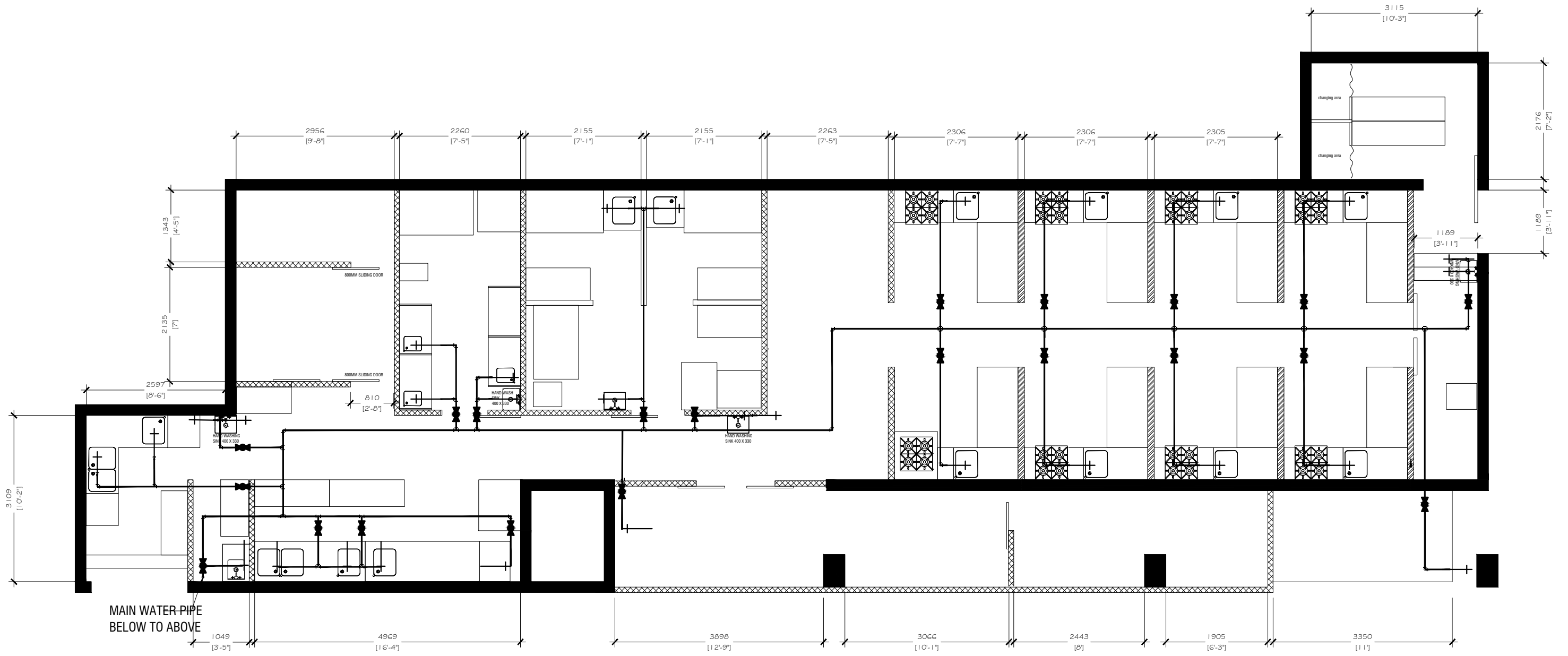


BCC COMMERCIAL KITCHEN PROJECT

SEWAGE	
SYMBOLS	DESCRIPTION
	CLEAN OUT
	ACO HYGIENIC BOX CHANNEL
	ACO HYGIENIC GULLY
	1000 UPVC WASTE PIPE

	PROPERTY NAME	UNIT NUMBER	DRAWING TITLE	DATE	NOTE	PAGE NO
	INDOOR SPORTS COMPLEX	11594-ISC-1-01	DRAINAGE LAYOUT	5/12/2022		
	TENANT NAME	USAGE	SCALE	REVISION NUMBER		
	BCC	COMMERCIAL KITCHEN	1:75	12		

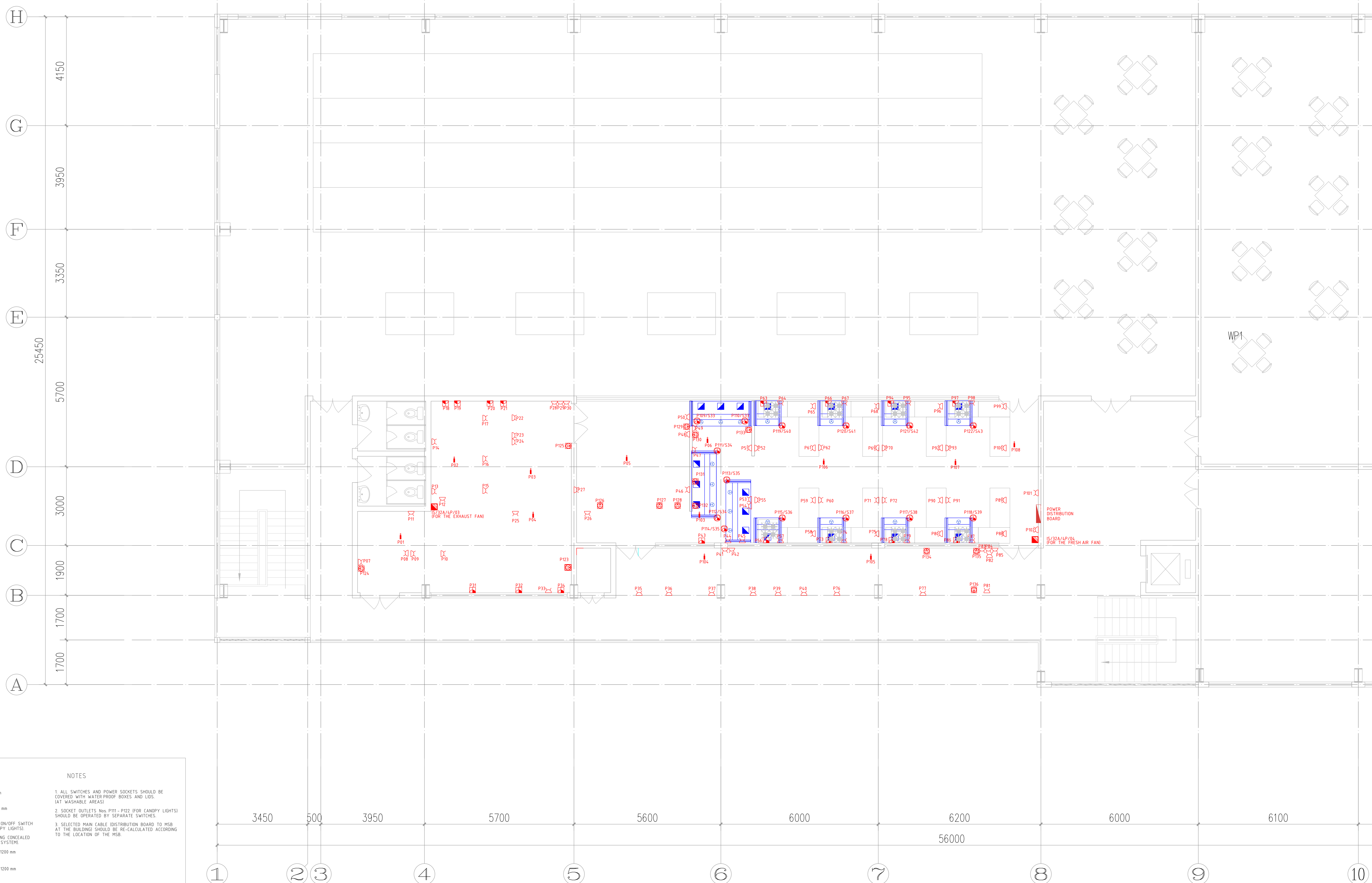


BCC COMMERCIAL KITCHEN PROJECT

WATER SUPPLY	
SYMBOLS	DESCRIPTION
	TAP
	BALL VALVE
	FRESH WATER PIPE

NOTE: HEATER TO BE ALLOCATED TO THE STORAGE TOP  
 ALL SINKS EXCEPT THE SMALLEST SINKS TO HAVE BOTH HOT AND COLD  
 BESIDE ALL SMALL SINKS IN THE COMMON AREAS, TO HAVE A  
 RETRACTABLE HOSE REEL WITH SPRAY GUN

	PROPERTY NAME	UNIT NUMBER	DRAWING TITLE	DATE	NOTE	PAGE NO
	INDOOR SPORTS COMPLEX	11594-ISC-1-01	WATER SUPPLY PLAN	5/12/2022	DO NOT SCALE ALL DIMENSIONS SHALL BE VERIFIED ON SITE BY THE CONTRACTOR.	
	TENANT NAME	USAGE	SCALE	REVISION NUMBER	ANY DISCREPANCIES SHALL BE MADE KNOWN TO THE DESIGNER FOR DECISION BEFORE PROCEEDING WITH THE WORK.	04
	BCC	COMMERCIAL KITCHEN	1:75	12		

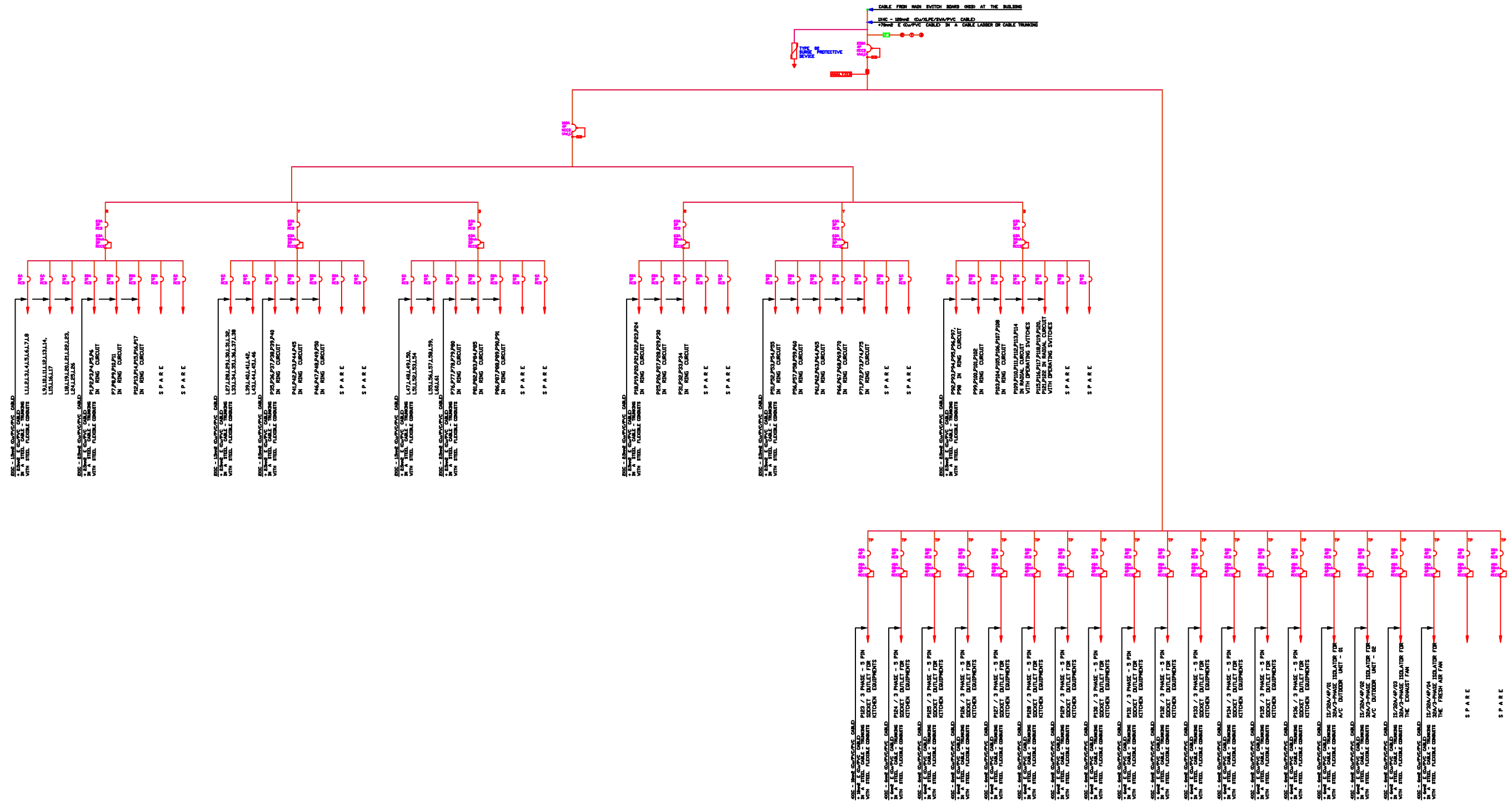


**LEGEND**

- 13 A - TWIN SOCKET OUTLET AT 450 mm ABOVE F.F.L. WITH COVER.
- 13 A - SINGLE SOCKET OUTLET AT 2200 mm ABOVE F.F.L. (FOR THE HOOD).
- 13 A - SINGLE SOCKET OUTLET WITH A ON/OFF SWITCH AT CEILING CONCEALED (FOR THE CANOPY LIGHTS).
- 13 A - SINGLE SOCKET OUTLET AT CEILING CONCEALED (FOR THE IN-DOOR UNITS OF THE A/C SYSTEM).
- 32 A - 5 POINTS 3 PHASE SOCKETS AT 1200 mm ABOVE F.F.L.
- 40 A - 5 POINTS 3 PHASE SOCKETS AT 1200 mm ABOVE F.F.L.
- 32 A/4P (3 PHASE) ISOLATOR AT 1200 mm ABOVE F.F.L. WITH A MOUNTING BOX (FOR THE OUT-DOOR UNITS OF THE A/C SYSTEM).
- 32 A/4P (3 PHASE) ISOLATOR AT 2200 mm ABOVE F.F.L. WITH A MOUNTING BOX (FOR THE VENTILATION SYSTEM).
- DISTRIBUTION BOARD.

**NOTES**

1. ALL SWITCHES AND POWER SOCKETS SHOULD BE COVERED WITH WATER-PROOF BOXES AND LIDS (AT WASHABLE AREAS).
2. SOCKET OUTLETS Nos. P111 - P122 (FOR CANOPY LIGHTS) SHOULD BE OPERATED BY SEPARATE SWITCHES.
3. SELECTED MAIN CABLE (DISTRIBUTION BOARD TO MSB AT THE BUILDING) SHOULD BE RE-CALCULATED ACCORDING TO THE LOCATION OF THE MSB.



## DISTRIBUTION SYSTEM FOR SDB - FFL1 LIGHTING & GENERAL PURPOSE POWER

Tenant: Business Center Corporation  
 Unit Number: 11594-ICS-1-01  
 Property: Indoor Sports Complex  
 Usage: Commercial Kitchen

CLIENT  
 CENTILION MALDIVES PVT. LTD.  
 H. RAY JANVAREE MAGU  
 MALE, REPUBLIC OF MALDIVES  
 MOBILE: +960 77893390

DRAWING & ELECTRICAL DISTRIBUTION DESIGN BY  
**MPCCI** MEPCI PVT. LTD.  
 8/3, DE BECKWITHS MARKAZA  
 COLOMBO 11  
 MOBILE: 94 77474254 PHONE: 94 11 2383631  
 EMAIL: mpcce@mpcci.com

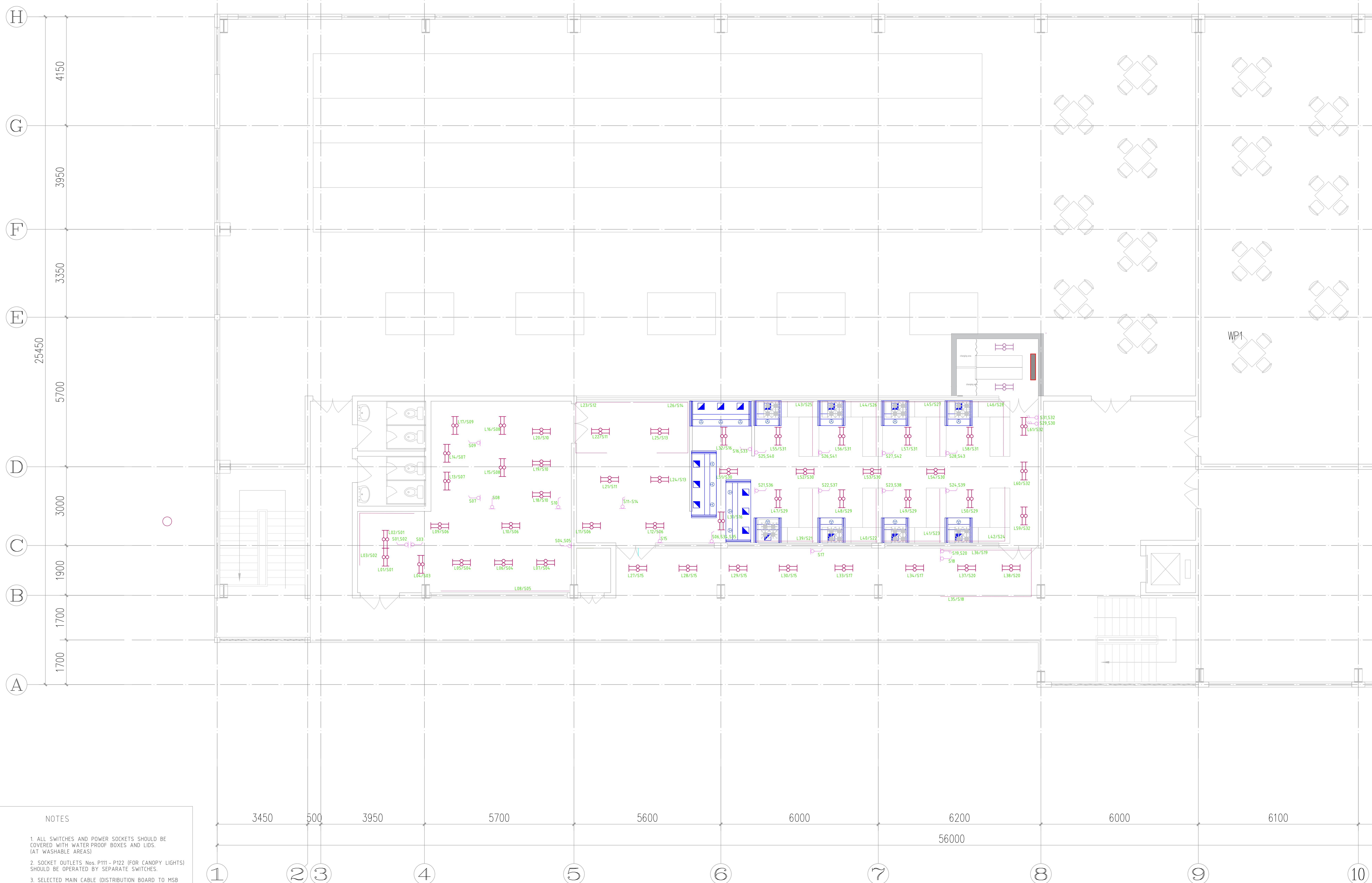
PROJECT  
**BCC COMMERCIAL  
 KITCHEN PROJECT  
 MALDIVES**

DRAWING TITLE  
**FIRST FLOOR ELECTRICAL  
 DISTRIBUTION PANEL  
 SINGLE LINE DIAGRAM**

SCALE	DATE	BY	CHKD	APP	REV	DESCRIPTION
	19.08.22	MBP	BCC	BCC	01	GENERALLY REVISED AS PER EQUIPMENT CHANGE
PAGE NO	01/01	CAR FILE	BOCCENT			
DWG. NO.	MBP/BCC/104 R1					
						21.09.22

NOTE:  
 1. ALL DIMENSIONS ARE IN MILLIMETERS UNLESS NOTED OTHERWISE  
 2. PLEASE REFER DWG. NO. MEP-BCC001 FOR LEGEND & ABBREVIATIONS.



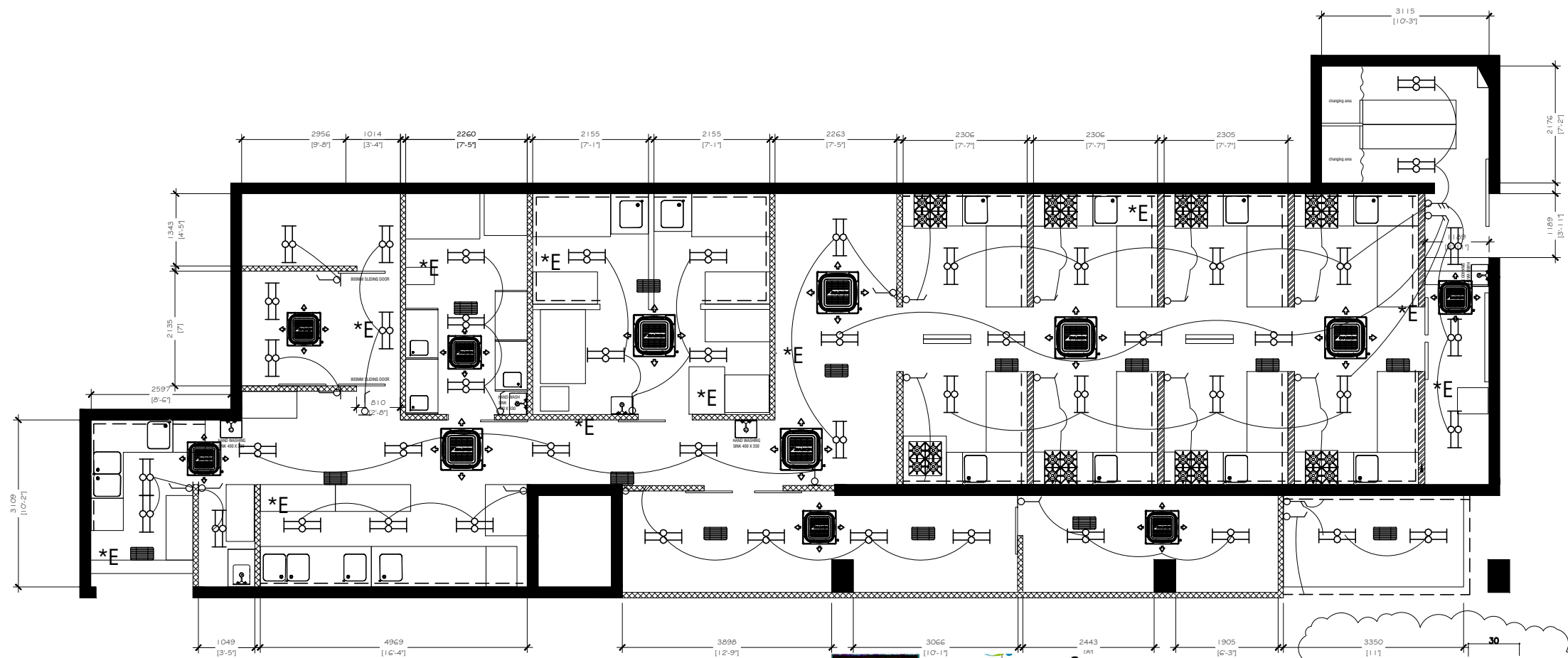


**LEGEND**

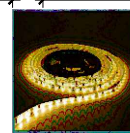
- DISTRIBUTION BOARD.
- ONE GANG SWITCH
- TWO GANG SWITCH
- THREE GANG SWITCH
- PENDANT LIGHT  
3900 K 24 WATTS  
OR SIMILAR
- 4500 K LED STRIP LIGHT  
AT 900 mm FROM F.F.L.

**NOTES**

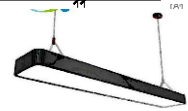
1. ALL SWITCHES AND POWER SOCKETS SHOULD BE COVERED WITH WATER PROOF BOXES AND LIDS. (AT WASHABLE AREAS)
2. SOCKET OUTLETS Nos. P111 - P122 (FOR CANOPY LIGHTS) SHOULD BE OPERATED BY SEPARATE SWITCHES.
3. SELECTED MAIN CABLE (DISTRIBUTION BOARD TO MSB AT THE BUILDING) SHOULD BE RE-CALCULATED ACCORDING TO THE LOCATION OF THE MSB.



LIGHTING & SWITCHES PLAN



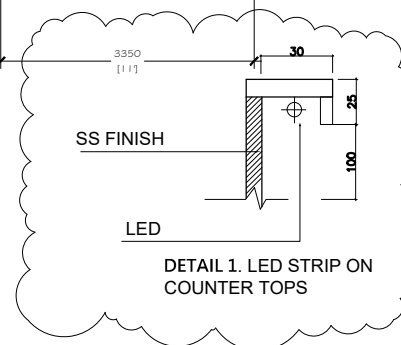
LED STRIP



PENDANT LIGHT



switches similar



PROPERTY NAME	UNIT NUMBER	DRAWING TITLE	DATE	NOTE	PAGE NO
INDOOR SPORTS COMPLEX	11594-ISC-1-01	LIGHTING & SWITCHES PLAN	5/12/2022	DO NOT SCALE ALL DIMENSIONS SHALL BE VERIFIED ON SITE BY THE CONTRACTOR.	02
TENANT NAME	USAGE	SCALE	REVISION NUMBER	ANY DISCREPANCIES SHALL BE MADE KNOWN TO THE DESIGNER FOR DECISION BEFORE PROCEEDING WITH THE WORK.	
BCC	COMMERCIAL KITCHEN	1:100	12		

