



MALDIVES INDUSTRIAL FISHERIES COMPANY LTD (MIFCO)

COMPETITIVE BIDDING
FOR
CONDUCTING AN ENVIRONMENTAL IMPACT ASSESSMENT
FOR BUILDING 1000TON STORAGE FOR FROZEN TUNA
AT G.DH. THINADHOO

REFERENCE NO: 134-PRO/I/2023/37

DATE: 07th MAY 2023

REQUEST FOR QUOTATION | 2023

BID REFERENCE	134-PRO/I/2023/37
REQUEST FOR PROPOSALS (RFP)	07 th May 2023
REGISTRATION FOR AN INFORMATION SESSION (ONLINE)	10 th May 2023 10:00 am, Male 'Time
INFORMATION SESSION	10 th May 2023 11:00 am, Male 'Time
REGISTERING FOR BID OPENING MEETING (OPTIONAL)	15 th May 2023 01:00 pm, Male 'Time
LAST DATE AND TIME FOR RECEIPT OF BIDS	15 th May 2023 01:00 pm, Male 'Time
TIME AND DATE OF OPENING OF BIDS	15 th May 2023 02:00 pm, Male' Time
BID SUBMISSION	Bids should be submitted only to contract@mifco.mv email.
PLACE OF OPENING OF BIDS	Via Microsoft Teams Head Office, Maldives Industrial Company Ltd. Hilaalee Magu, Maafannu, Male Maldives.
ADDRESS OF COMMUNICATION	Procurement Department, Maldives Industrial Fisheries Company, Hilaalee Magu, Maafannu, Male, Maldives

**TERMS OF REFERENCE FOR
CONDUCTING AN ENVIRONMENTAL IMPACT ASSESSMENT FOR BUILDING 1000TON
STORAGE FOR FROZEN TUNA AT G.DH. THINADHOO**

1. INVITATION TO BID

Maldives Industrial Fisheries Company Limited (MIFCO) invites interested bidders to submit quotation to conduct an Environmental Impact Analysis and submit a report on this analysis, related to the building and operation of cold storage and related facilities for storage of 1000 tons of frozen tuna and 120 tons per shift brine freezing facility planned at Gdh. Thinadhoo.

2. BACKGROUND

MIFCO is the leader of Maldives Fisherman with more than 3 decades of service to the Maldives fisheries as a state-run corporate enterprise for the processing and exportation of fisheries products. Throughout our successful history, we have shown our commitment to the development of the fisheries sector in the Maldives while maintain the unique identity of the Maldives pole and line fishery.

MIFCO manages the largest fish procuring operation in Maldives collecting pole & line Skipjack tuna and hand line caught Yellow Fin tuna. MIFCO, has its operations based in 04 factories located in 04 strategic geographic regions across Maldives. Thinadhoo operation will be an addition to the present operations.

Thinadhoo in Gaafu Alifu Atoll is an inhabited island and has a big fishing community. This is one of the best fishing islands in the Southern region of Maldives. Mifco collects an average of 16,000 tons annually from Thinadhoo harbour. Mifco sends its fish collector vessels to Thinadhoo harbour to collect fresh fish from Thinadhoo fishermen. Usually, Mifco always keep one of its collector vessels at Thinadhoo outer harbour for buying fish from islanders while procuring fish directly and leading logistical support to fisherman through additional fleet of MIFCO's own collector vessels. The core ability to withstand competition comes through delivering quality assured tuna rather than quantity and by responsibly sourcing it, despite the hardship of the process. MIFCO stands steadfast supporting our fisherman's tremendous effort to bring a progressive economic growth to Maldivian fishing industry.

3. DEFINITIONS

For the purpose of this Request for quotation (RFQ), the following words and expressions shall have the meaning hereby assigned to them except where the context otherwise requires: -

- 3.1 Employer' means the Maldives Industrial Fisheries Company limited (MIFCO) which expression shall unless excluded by or repugnant to the context include Employer's representative.
- 3.2 'Employer's Representative' means the staff, or any person authorized by who would be in charge of work and would sign the documents on behalf of the MIFCO.
- 3.3 'Supplier' referred in this document means the company, organization or individual engaged in rendering the required professional services & shall include all associates.

4. SCOPE OF THINADHOO PROJECT

Scope of the proposed Thinadhoo Project includes the following:

In general, the requirements for the Thinadhoo cold storage are as follows.

- a. Building of a 1000-ton storage capacity cold storage for frozen tuna to maintain temperature at -25°C.
- b. The cold storage is to be built with 2 stores each with capacity 500 tons in each store.
- c. Appropriate storage containers for cold stores should be provided. Each container should be able to hold about 1000 kg of frozen fish.
- d. The cold store should have ante room capable of maintaining room temperature at 0°C.
- e. The cold store is to be provided with brine freezing facilities.
- f. Brine freezing is to be provided for 120 tons of fresh tuna per 8 hours shift and to be operated for 2 shifts daily.
- g. Fresh fish is needed to be frozen to a backbone temperature of -10°C in less than 8 hours.
- h. Brine freezers are to be constructed in units of 10 tons capacity each.
- i. Loading and unloading facilities for brine tanks should be provided by means of overhead gantry cranes.
- j. Frozen fish are needed to be sorted into different sizes or weight, and facilities should be provided for the purpose.
- k. Fish handling equipment are needed to be provide.

I. Provision of power and other needed utilities are needed to be provided.

- Cold storage will consist of 2 X 500MT cold stores arranged in a row and including a thermally enclosed and cooled entrance gallery (with heated anti-ice floor) for forklift traffic.
- Cold store entrance doors will be powered or manually actuated. Cold store cooling load will include a margin for cooldown of frozen tuna from -16°C to -25°C.
- Cold store refrigeration evaporator units will include hot gas defrost capability. Lighting and vacuum relief will be included.
- Condensers will be cooled by direct sea water. Sea water will be taken from the lagoon and out fall will pass into the lagoon as well.
- Cold store and brine area affluent discharge
- Site Map and layout of the facility is attached in Appendix A

5. SCOPE OF ASSESSMENT

5.1 Main objective of this EIA should be to assess the environmental and social aspects associated with the proposed Thinadhoo cold storage and its associated facilities and ensure that significant environmental and social impacts of the proposed project are considered and assessed at the planning stage of the project.

5.2 Specific areas to be covered should include:

- Background, rationale, and justification of the project.
- Detailed description of the project.
- Identify the relevant Laws, Regulations, Guidelines and Procedures applicable to the project.
- Conduct Stakeholder consultation and engagement, and disclosure of the project information.
- Undertake environmental and baseline assessment of the project location.
- Identify and assess the potential environmental and social impacts due to project implementation and formulate measures to address these impacts.
- Provide information on the consideration of alternatives to avoid and/or minimize environmental and social impacts.
- Prepare the environmental and social mitigation plans to address the adverse impacts.
- Describe the implementation and institutional arrangement for managing environmental and social impacts.

- Prepare a monitoring plan.

6. GENERAL INFORMATION FOR BIDDERS.

- 6.1 The Contractor is not obliged to award the work at the lowest price offered. The highest points in the bid evaluation will be considered for award of the work. Points will be awarded based on the information contained in the submitted tender document. If the information is incomplete, you will get fewer points. The information submitted must be accurate. If the information submitted is proved to be incorrect, the bid will be rejected.
- 6.2 Supplier shall be responsible for careful examination of all quotation and documents. It is a responsibility of the supplier to collect and clarify all the necessary information prior to bidding and no alteration to submitted offer will be accepted by the Employer after the offer is submitted.
- 6.3 Quotation currency should be in Maldivian Rufiya (MVR). The quotation price must be written without erasures, both in figures and in words. In case of discrepancy between figures and words, the words shall prevail.
- 6.4 Each supplier must submit only one proposal by itself. A supplier who submits or participates in more than one quotation will be disqualified. If Employer discovers or has a reason to believe that collusion exists among any/all quotations, any/all such quotations will be rejected, and all participants in such collusion will be excluded from consideration for future quotation for the same work.
- 6.5 The quotation shall be typed or written in indelible ink and signed by authorized signatories. Any change should be initialled.
- 6.6 Work once awarded cannot be outsourced.
- 6.7 Any Forms related to the RFQ shall be filled and submitted with the quotation.
- 6.8 Amendments Before the deadline for submission of quotations, the Employer may modify the RFQ by issuing addenda. To give prospective suppliers reasonable time in which to take an addendum into account in preparing their quotations, the Employer shall extend, as necessary, the deadline for submission of quotations.
- 6.9 Deadline for submission of quotation may be extended at the discretion of Employer.
- 6.10 Quotation submitted after deadline shall be rejected.
- 6.11 Quotation is to be submitted via email to the e-mail address given below.
- 6.12 If the email is not received to below email, the Employer will assume no responsibility for the misplacement or premature evaluation of quotations.
- 6.13 The award shall be notified to the successful supplier by the Employer within the validity date of the quotation.

6.14 The committee will review each quotation and perform a detailed evaluation based on the evaluation criteria described in this document.

6.15 In the event where the prices received are above the prices anticipated or where the submitted quotations are not representatives of the prices in the general market, MIFCO reserves the right to negotiate.

7. REQUIRED DOCUMENTS.

7.1 Quotation with Price, Duration and Payment terms

7.2 Experience proven documents

8. EVALUATION CRITERIA AS FOLLOWS.

Criteria	Marks
Proposed Price	50
Duration	25
Experience	25

9. EVALUATION GUIDELINES

Marks shall be distributed on Pro-rata basis. The highest scorer would get maximum from each category (number 8).

Criteria	Weightage
<p>Proposed Price</p> <ul style="list-style-type: none"> The lowest price will receive the highest marks and the marks for the rest will be given on pro rata basis. 	50%
<p>Duration</p> <ul style="list-style-type: none"> Lowest duration offered would achieve the highest. Higher Proposal will receive lesser marks in proportion to the lowest quoted. 	25%
<p>Experience</p> <ul style="list-style-type: none"> Have completely delivered more than 10 similar projects within the last 5 years (25% marks). Have completely delivered more than 5 similar projects within the last 5 years (15% marks). Have completely delivered more than 3 projects within the last 5 years (10% marks). 	25%

10. QUOTATION VALIDITY

The quotation shall remain valid for 30 (Thirty) days after the deadline for date of quotation submission.

11. QUERIES

Any query regarding this RFQ should be sent by e-mail to bid@mifco.mv at least 2 days before the date of submission of the bid.

12. INFORMATION SESSION

An information session will be held on **10th May 2023 at 11:00 am** in the meeting room of the MIFCO Head Office. Bidders who are interested in participating in this bid but are unable to attend the information session physically may participate in an online information session.

To register for the online session, interested bidders must submit an email to bid@mifco.mv expressing their interest before **10:00 am** on **10th May 2023**.

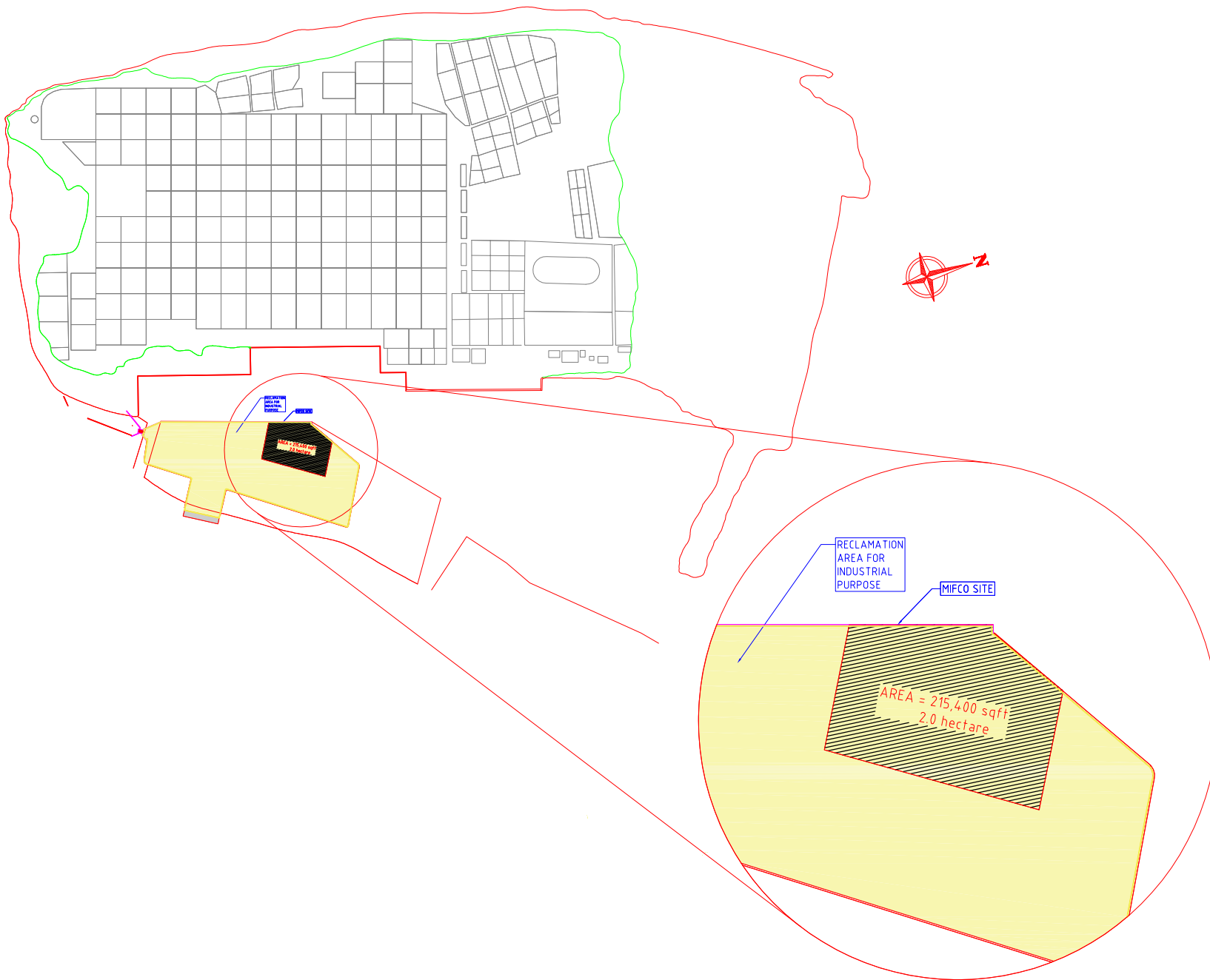
Only bidders who attend the information session, whether in-person or online, will be eligible to participate in the bid.

13. DATE OF SUBMISSION OF BIDS:

The deadline for submission of bids is **15th May 2023 at 01:00 pm**. Bids submitted after the deadline and incomplete bids will not be accepted. Bids should be submitted to contract@mifco.mv email.

APPENDIX A

Site Map and Layout Drawing



PROJECT TITLE:

1000MT COLD STORE AT G.DH THINADHOO

DRAWING TITLE:

SITE LOCATION

CLIENT:

MALDIVES INDUSTRIAL FISHERIES COMPANY LIMITED

CONSULTANT:

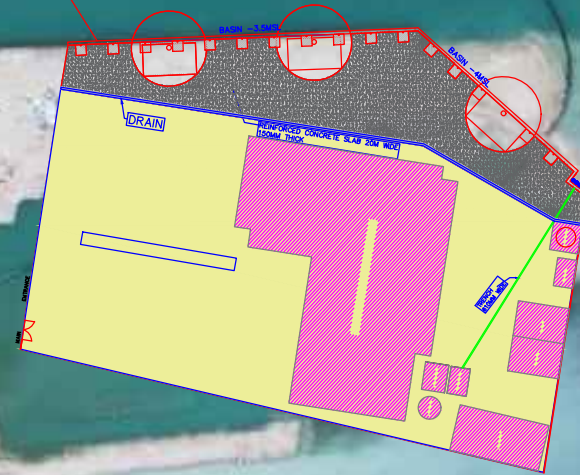
REVISION DATE:

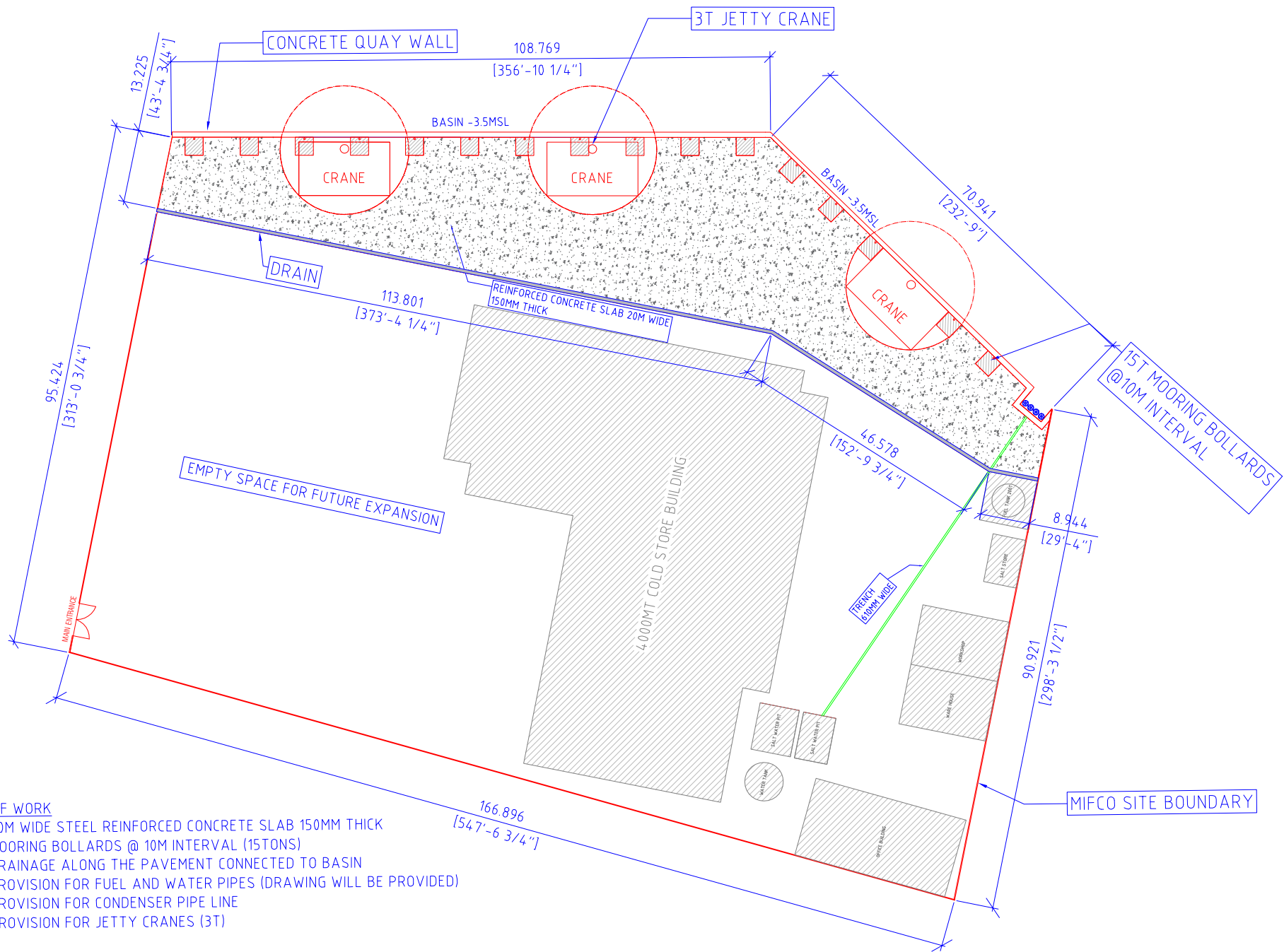
25-03-2023

DRAWN BY:

MUSLIM ABDUL HAKEEM

1000MT COLD STORAGE & 120MT BRINE FREEZER BUILDING SITE





SCOPE OF WORK

- x 20M WIDE STEEL REINFORCED CONCRETE SLAB 150MM THICK
- x MOORING BOLLARDS @ 10M INTERVAL (15TONS)
- x DRAINAGE ALONG THE PAVEMENT CONNECTED TO BASIN
- x PROVISION FOR FUEL AND WATER PIPES (DRAWING WILL BE PROVIDED)
- x PROVISION FOR CONDENSER PIPE LINE
- x PROVISION FOR JETTY CRANES (3T)

PROJECT TITLE:
 1000MT COLD STORE AT G.DH THINADHOO

DRAWING TITLE:
 PLAN

CLIENT:
 MALDIVES INDUSTRIAL FISHERIES COMPANY LIMITED

CONSULTANT:

REVISION DATE:
 25-03-2023

DRAWN BY:
 MUSLIM ABDUL HAKEEM