

بِسْمِ اللّٰهِ الرَّحْمٰنِ الرَّحِیْمِ

Secretariate of the Fuvahmulah City Council  
Fuvahmulah, Republic of Maldives



މުވާދުމުގެ ސަބަބުން ސަލާމަތް ގެ ސަބަބުން  
މުވާދުމުގެ ސަބަބުން ސަލާމަތް ގެ ސަބަބުން

މުވާދުމުގެ ސަބަބުން ސަލާމަތް ގެ ސަބަބުން

މުވާދުމުގެ ސަބަބުން ސަލާމަތް ގެ ސަބަބުން ސަލާމަތް ގެ ސަބަބުން ސަލާމަތް ގެ ސަބަބުން  
މުވާދުމުގެ ސަބަބުން ސަލާމަތް ގެ ސަބަބުން (IUL)468-APS/468/2023/166

31/5/2023

މުވާދުމުގެ ސަބަބުން ސަލާމަތް ގެ ސަބަބުން  
މުވާދުމުގެ ސަބަބުން ސަލާމަތް ގެ ސަބަބުން























# **TERMS OF REFERENCE**

CONCEPT NOTE OF **BANDAARA KILHI PROTECTED AREA**

## Contents

<b>1. INTRODUCTION</b> .....	3
<b>2. OBJECTIVES</b> .....	3
<b>3. SCOPE OF WORK</b> .....	3
<b>4. DELIVERABLES</b> .....	4
<b>5. DURATION</b> .....	4
<b>6. APPENDIX</b> .....	5
<b>6.1 Bandaara kilhi protected area</b> .....	5

## 1. INTRODUCTION

Located between Huvadhoo and Addu atoll, Fuvahmulah is 5km long and is the second most southern island of the Maldives archipelago with a resident population of 13511. Fuvahmulah is the only administrative atoll consisting of one island in Maldives making it unique and isolated. The people of Fuvahmulah are known for their hospitality and friendly nature. Mother Nature has bestowed Fuvahmulah with beautiful wetlands and exceptional geographical features which are connected to the past, present and future of the livelihood of the local community.

Opening of Fuvahmulah Nature Park on 14<sup>th</sup> September 2018 was a stepping stone to the recreational tourism of Fuvahmulah. With the Nature Park, people became more aware of the importance of conserving the natural resources and using them sustainably. The boardwalks and canoe rides at the lake gave people more access to the picturesque scenery of the wetlands. In addition to that, the diving industry grew rapidly and more tourists visited all year round to see tiger sharks and the marine mega fauna. Hence, Fuvahmulah became a popular destination among locals and tourists. Following this, Fuvahmulah got internationally recognized as Biosphere Reserve by UNESCO in 28<sup>th</sup> October 2020. Therefore, to maintain this recognition, sustainable development of resources is of utmost importance to make the Fuvahmulah experience more favorable to the visitors.

As the breathtaking wetlands of Dhadimagi kilhi and Bandaara kilhi are one of the most valuable assets of Fuvahmulah, further development of these areas are necessary to increase the pool of visitors. However, government funds are not enough to develop the area ideally. Hence this “*Terms of Reference*” highlights the expected deliverables which could be used to acquire funds from international funding organizations and for planning in the various stages of development.

## 2. OBJECTIVES

Main objectives of this project are:

- Develop a concept plan for Bandaara Kilhi protected area which can be used to acquire funds.
- Creating opportunities to increase income of the Nature Park by introducing more recreational activities so that the park becomes a self-sustaining one.
- Providing more activities which can be enjoyed by the locals and tourists visiting the park.

## 3. SCOPE OF WORK

The scope of work includes the concept design for the following areas/features/structures.

3.1 Walkway through the wetland area. Includes canopy walks, tree houses, rest areas, photo points, fishing points, birding spots

3.2 Tourism area – eco lodges

3.3 Bike lane along the boundary of protected area

3.4 Camping area

3.5 Visitor Center

Should cater to the following

- Visitor Center / Information Counter
- Exhibition Area / Discovery Center
- Theater / Auditorium
- Conference Facilities / Multi-function rooms

- Restaurant / Café
- Souvenir Shop
- Co-working space
- Fitness Center
- Administrative Office
- Mother's Room
- Toilets
- Vehicle Parking

### 3.6 Kodakilhi walkway

## **4. DELIVERABLES**

The deliverable of shall be the following:

- 4.1 Concept brief (PDF)
- 4.2 Location plan (PDF and CAD)
- 4.3 Site plan showing the surrounding context (PDF and CAD)
- 4.4 Floor plans and elevations (PDF and CAD)
- 4.5 Schematic Diagram of the proposed plan (PDF)
- 4.6 Mood board (PDF)
- 4.7 Interior and exterior perspective images where relevant (PDF)

## **5. DURATION**

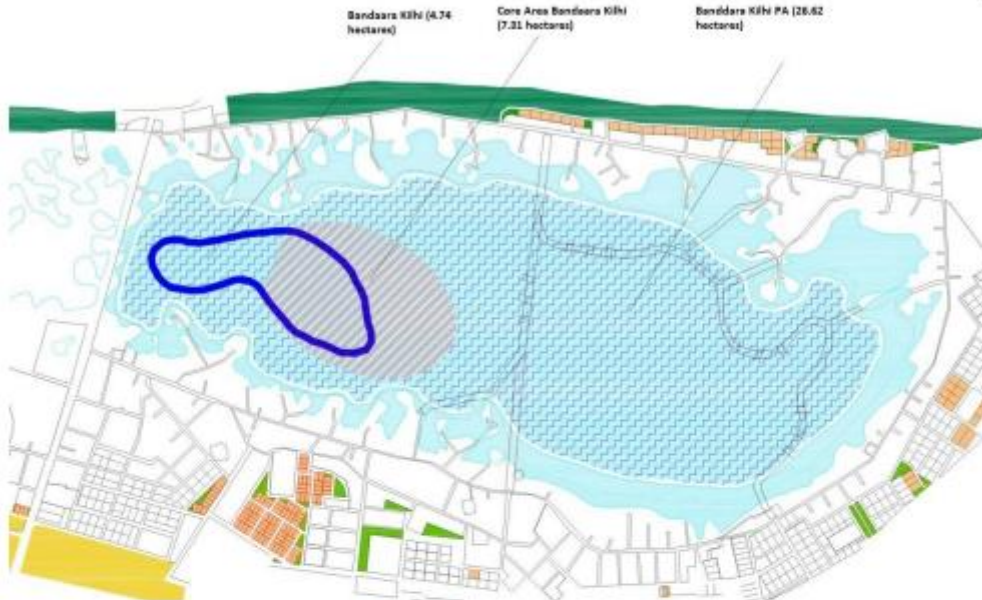
The consultant is expected to provide their services within a period of maximum 13 weeks

## 6. APPENDIX

### 6.1 Bandaara kilhi protected area

பேர்திட்டம் 1: பாண்டாரா கில்லி பாதுகாக்கப்பட்ட பகுதி

பாண்டாரா கில்லி பாதுகாக்கப்பட்ட பகுதி



பேர்திட்டம் 1: பாண்டாரா கில்லி பாதுகாக்கப்பட்ட பகுதி

0°17'50.21"S, 73°25'47.37"E  
 0°17'50.27"S, 73°25'48.26"E  
 0°17'51.40"S, 73°25'52.07"E  
 0°17'54.08"S, 73°25'52.54"E  
 0°17'56.45"S, 73°25'55.58"E  
 0°18'11.62"S, 73°26'3.72"E  
 0°18'14.77"S, 73°26'2.71"E  
 0°18'18.87"S, 73°25'49.45"E  
 0°18'17.45"S, 73°25'48.08"E  
 0°18'9.06"S, 73°25'48.62"E

0°18'7.87"S, 73°25'46.66"E  
 0°18'2.99"S, 73°25'43.45"E  
 0°18'0.85"S, 73°25'41.01"E  
 0°17'57.58"S, 73°25'39.64"E  
 0°17'53.54"S, 73°25'39.76"E  
 0°17'49.20"S, 73°25'37.56"E  
 0°17'45.51"S, 73°25'37.86"E  
 0°17'44.56"S, 73°25'40.06"E  
 0°17'45.57"S, 73°25'42.91"E



# **TERMS OF REFERENCE**

**CONCEPT NOTE OF DHADIMAGI KILHI PROTECTED AREA**

## Contents

<b>1. INTRODUCTION</b> .....	3
<b>2. OBJECTIVES</b> .....	3
<b>3. SCOPE OF WORK</b> .....	3
<b>4. DELIVERABLES</b> .....	4
<b>5. DURATION</b> .....	4
<b>6. APPENDIX</b> .....	5
<b>6.1 Dhadimagi kilhi protected area</b> .....	5

## 1. INTRODUCTION

Located between Huvadhoo and Addu atoll, Fuvahmulah is 5km long and is the second most southern island of the Maldives archipelago with a resident population of 13511. Fuvahmulah is the only administrative atoll consisting of one island in Maldives making it unique and isolated. The people of Fuvahmulah are known for their hospitality and friendly nature. Mother Nature has bestowed Fuvahmulah with beautiful wetlands and exceptional geographical features which are connected to the past, present and future of the livelihood of the local community.

Opening of Fuvahmulah Nature Park on 14<sup>th</sup> September 2018 was a stepping stone to the recreational tourism of Fuvahmulah. With the Nature Park, people became more aware of the importance of conserving the natural resources and using them sustainably. The boardwalks and canoe rides at the lake gave people more access to the picturesque scenery of the wetlands. In addition to that, the diving industry grew rapidly and more tourists visited all year round to see tiger sharks and the marine mega fauna. Hence, Fuvahmulah became a popular destination among locals and tourists. Following this, Fuvahmulah got internationally recognized as Biosphere Reserve by UNESCO in 28<sup>th</sup> October 2020. Therefore, to maintain this recognition, sustainable development of resources is of utmost importance to make the Fuvahmulah experience more favorable to the visitors.

As the breathtaking wetlands of Dhadimagi kilhi and Bandaara kilhi are one of the most valuable assets of Fuvahmulah, further development of these areas are necessary to increase the pool of visitors. However, government funds are not enough to develop the area ideally. Hence this “*Terms of Reference*” highlights the expected deliverables which could be used to acquire funds from international funding organizations and for planning in the various stages of development.

## 2. OBJECTIVES

Main objectives of this project are:

- Develop a concept plan for Dhadimagi kilhi protected area which can be used to acquire funds.
- Creating opportunities to increase income of the Nature Park by introducing more recreational activities so that the park becomes a self-sustaining one.
- Providing more activities which can be enjoyed by the locals and tourists visiting the park.

## 3. SCOPE OF WORK

3.1 Walkway through the wetland area. Includes canopy walks, tree houses, rest areas, photo points, fishing points, birding spots

3.2 Tourism area – eco lodges

3.3 Bike lane along the boundary of protected area

3.4 Camping area

3.5 Visitor center

Should cater to the following

- Visitor Center / Information Counter
- Exhibition Area / Discovery Center
- Theater / Auditorium
- Conference Facilities / Multi-function rooms
- Restaurant / Café
- Souvenir Shop
- Co-working space

- Fitness Center
- Administrative Office
- Mother's Room
- Toilets
- Vehicle Parking

3.6 Water park facilities

3.7 Zipline across wetland area

3.8 Floating platform for releasing boats and canoes

#### **4. DELIVERABLES**

The scope of works and the expected output or deliverable of the consultant shall be (but not limited to) the following:

- Concept brief (PDF)
- Location plan (PDF and CAD)
- Site plan showing the surrounding context (PDF and CAD)
- Floor plans and elevations (PDF and CAD)
- Schematic Diagram of the proposed plan (PDF)
- Mood board (PDF)
- Interior and exterior perspective images where relevant (PDF)

NOTE: All the structures shall not pass through the core area of the protected area. Appendix 1 shows the boundary of the protected area.

#### **5. DURATION**

The consultant is expected to provide their services within a period of maximum 13 weeks

## 6. APPENDIX

### 6.1 Dhadimagi kilhi protected area

مناطق محفوظه در منطقه سد سد سد



در سراسر منطقه در تمام نقاط و در تمام نقاط

0°16'52.43"S, 73°24'58.78"E  
 0°16'53.23"S, 73°25'3.09"E  
 0°16'54.68"S, 73°25'4.19"E  
 0°16'56.39"S, 73°25'9.25"E  
 0°17'2.05"S, 73°25'12.21"E  
 0°17'4.60"S, 73°25'15.31"E  
 0°17'9.91"S, 73°25'17.62"E  
 0°17'14.27"S, 73°25'18.47"E  
 0°17'16.68"S, 73°25'20.82"E  
 0°17'20.49"S, 73°25'21.02"E  
 0°17'23.24"S, 73°25'21.63"E

0°17'26.20"S, 73°25'20.22"E  
 0°17'22.09"S, 73°25'7.65"E  
 0°17'19.98"S, 73°25'4.04"E  
 0°17'19.53"S, 73°25'1.44"E  
 0°17'19.83"S, 73°24'54.97"E  
 0°17'14.87"S, 73°24'46.21"E  
 0°17'12.27"S, 73°24'45.55"E  
 0°17'6.41"S, 73°24'47.26"E  
 0°17'4.30"S, 73°24'49.31"E  
 0°16'59.24"S, 73°24'52.37"E  
 0°16'56.04"S, 73°24'53.32"E