

Project Title:

BOSWER SHED @ FSM S.GAN SITE

Design Approval:

.....

Recom. Approval:

.....

Approved:

.....

Sheet Contents:

.....

Revision Notes:

.....

Location:

Island

Designed by:

Ahmed Nisham Hassan

Drawn by:

Ahmed Nisham Hassan

Project Code:

Date: 14/06/2023

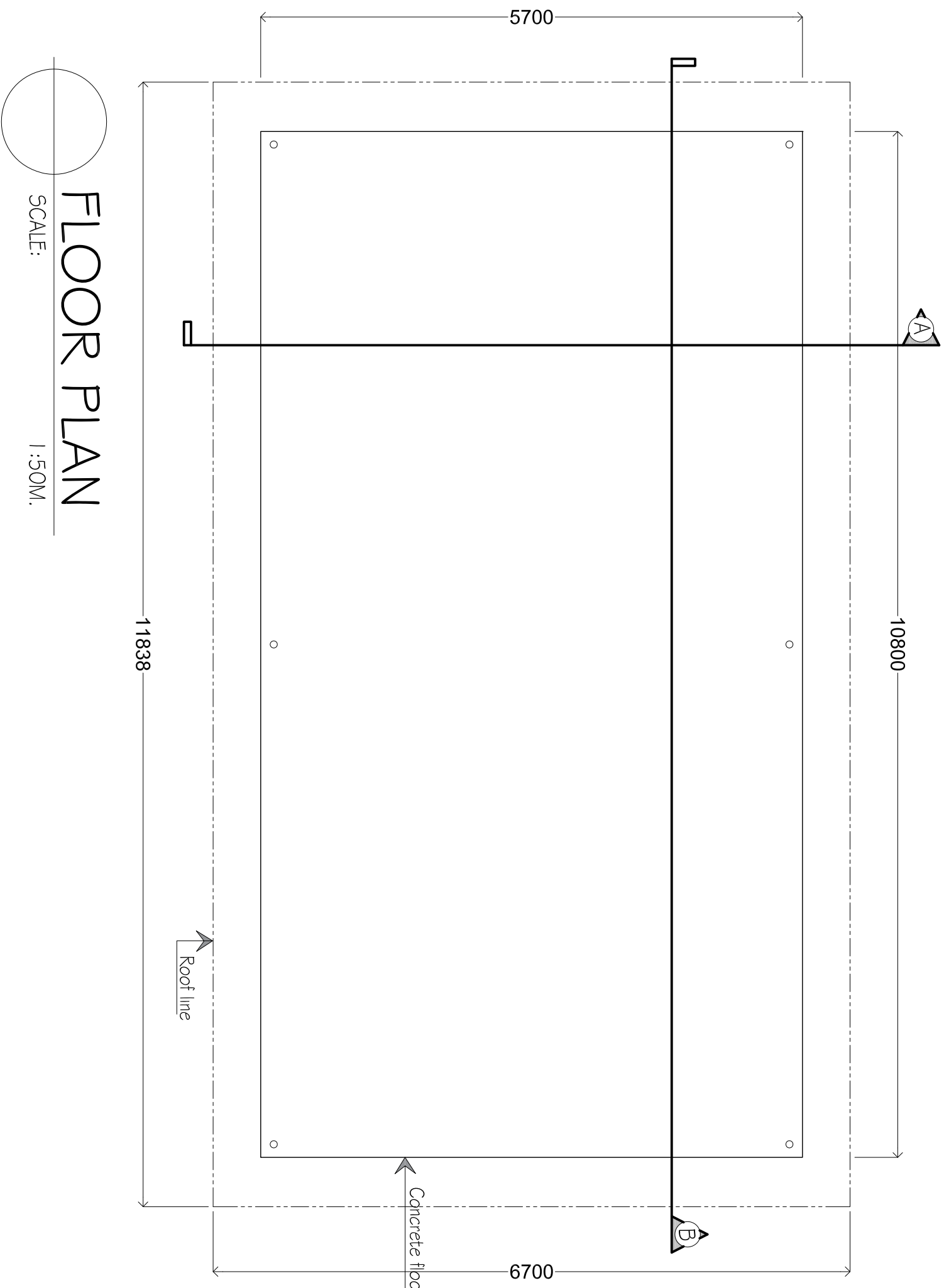
Sheet No: 1

The contractors must check all dimensions on site prior to the commencement of any work.



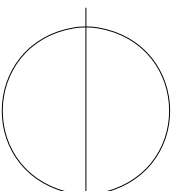
FSM

Fuel Supplies Maldives Pvt.Ltd
FSM Building 4th Floor Block - A, 200232
Bodunhuranaru Magu, Male', Maldives



FLOOR PLAN

SCALE: 1:50M.



The drawing, concept and design contained here the properties of Fuel Supplies Maldives Pvt. Ltd. Use of any kind or copy of whole or part of this drawing, concept or design or use on other projects or sites other than that specified on this drawing is strictly prohibited.

Project Title:

BOSWER SHED @ FSM S.GAN SITE

Design Approval:

Recom. Approval:

Approved:

Sheet Contents:

Revision Notes:

Location:

Island

Designed by:

Ahmed Nisham Hassan

Drawn by:

Ahmed Nisham Hassan

Project Code:

Date: 14/06/2023

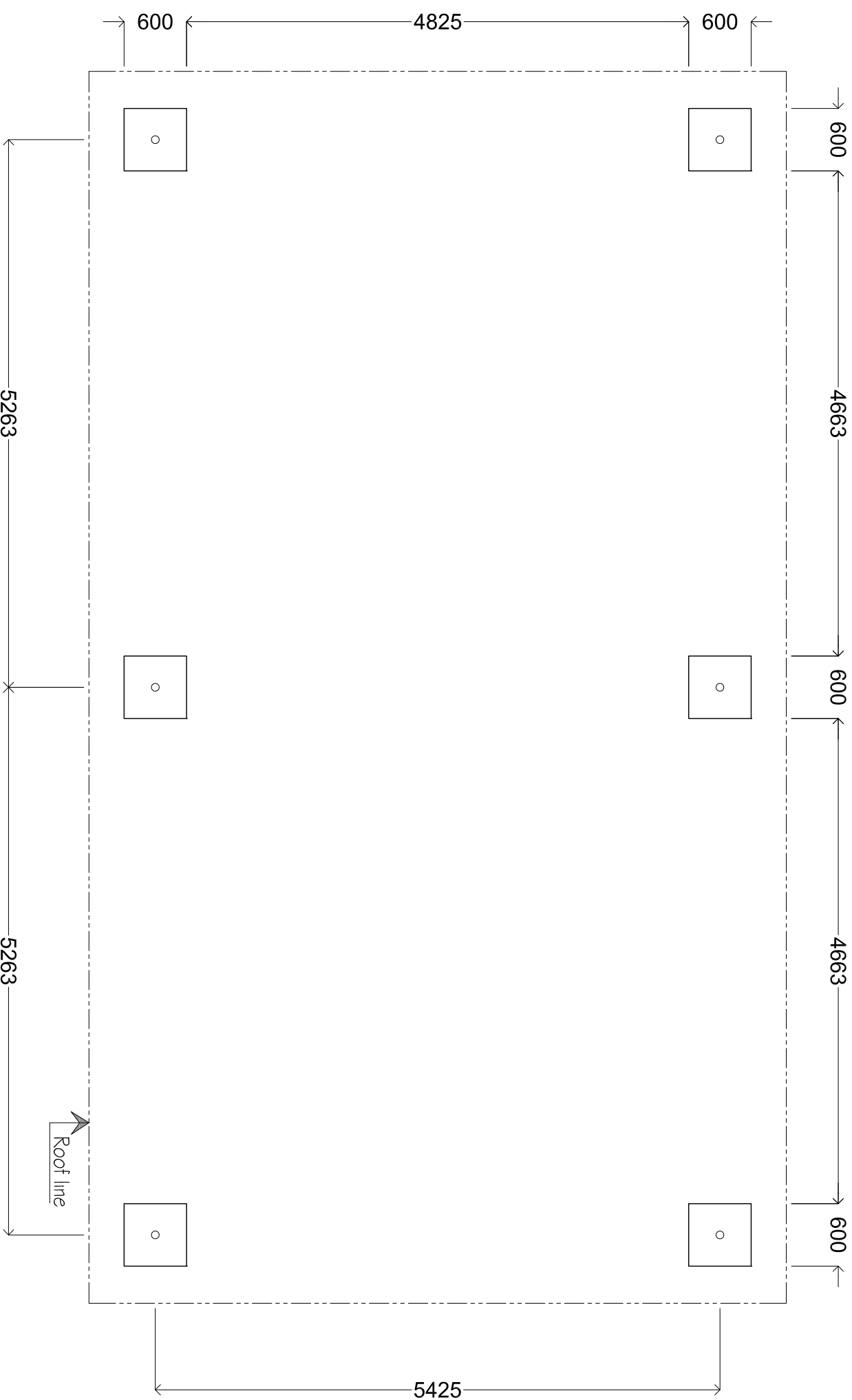
Sheet No: 1



Fuel Supplies Maldives Pvt.Ltd
FSM Building 4th Floor Block - A, 200232
Bodunthuraidaanu Magu, Male', Maldives



The drawing, concept and design contained here the properties of Fuel Supplies Maldives Pvt. Ltd. Use of any kind or copy of whole or part of this drawing, concept or design or use on other projects or sites other than that specified on this drawing is strictly prohibited.



FOOTING LAYOUT

SCALE:

1:50M.

Project Title:

BOSWER SHED @ FSM S.GAN SITE

Design Approval:

.....

Recom. Approval:

.....

Approved:

.....

Sheet Contents:

.....

Revision Notes:

.....

Location:

Island

Designed by:

Ahmed Nisham Hassan

Drawn by:

Ahmed Nisham Hassan

Project Code:

Date: 14/06/2023

Sheet No: 1

The contractors must check all dimensions on site prior to the commencement of any work.

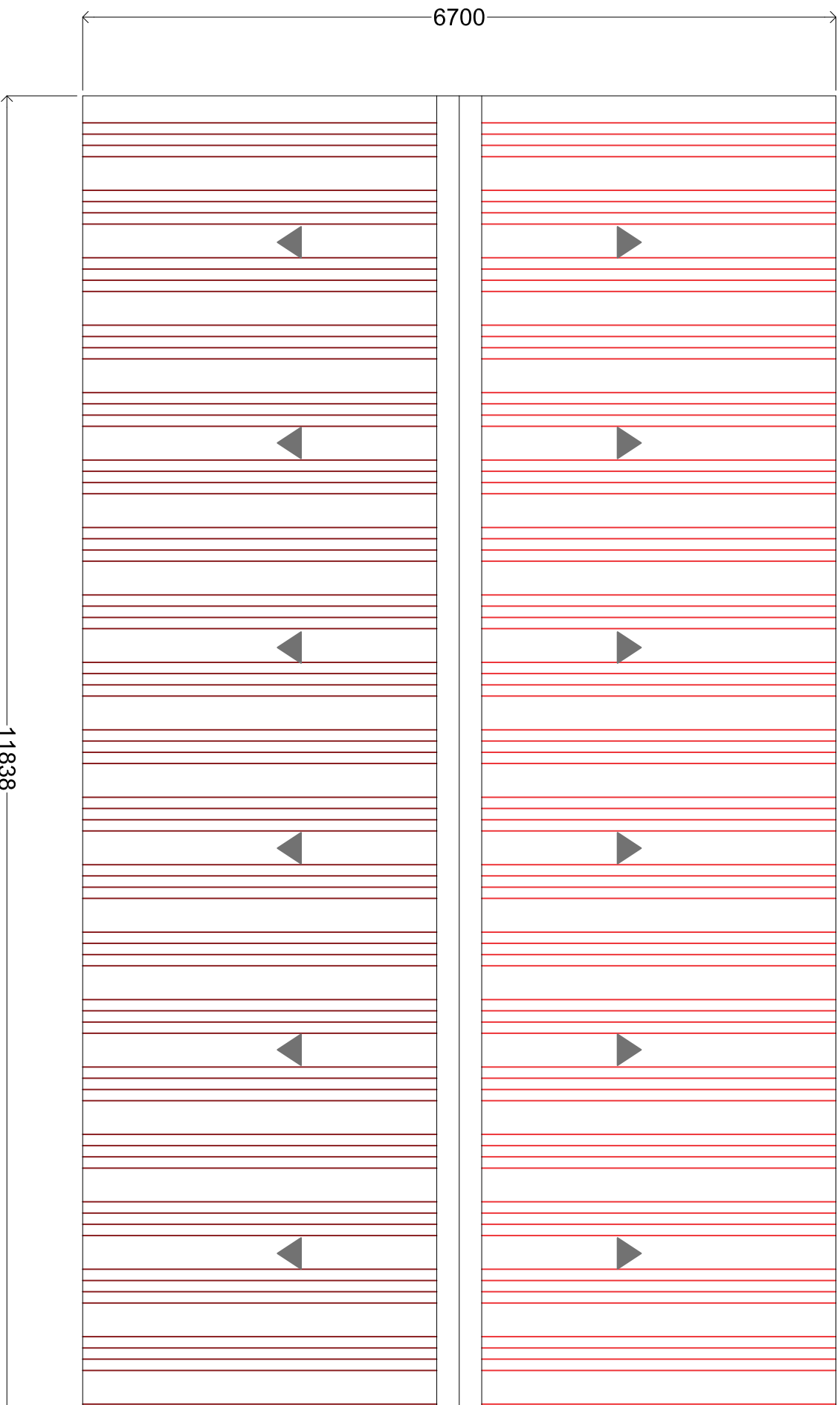


FSM

Fuel Supplies Maldives Pvt.Ltd
FSM Building 4th Floor Block - A, 200232
Bodunburaidanu Magu, Male', Maldives



The drawing, concept and design contained here the properties of Fuel Supplies Maldives Pvt. Ltd. Use of any kind or copy of whole or part of this drawing, concept or design or use on other projects or sites other than that specified on this drawing is strictly prohibited.



ROOF PLAN

SCALE: 1:50M.

Project Title:

BOSWER SHED @ FSM S.GAN SITE

Design Approval:

.....

Recom. Approval:

.....

Approved:

.....

Sheet Contents:

.....

Revision Notes:

.....

Location:

Island

Designed by:

Ahmed Nisham Hassan

Drawn by:

Ahmed Nisham Hassan

Project Code:

Date: 14/06/2023

Sheet No: 1

The contractors must check all dimensions on site prior to the commencement of any work.

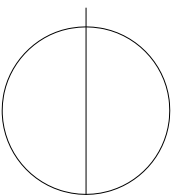
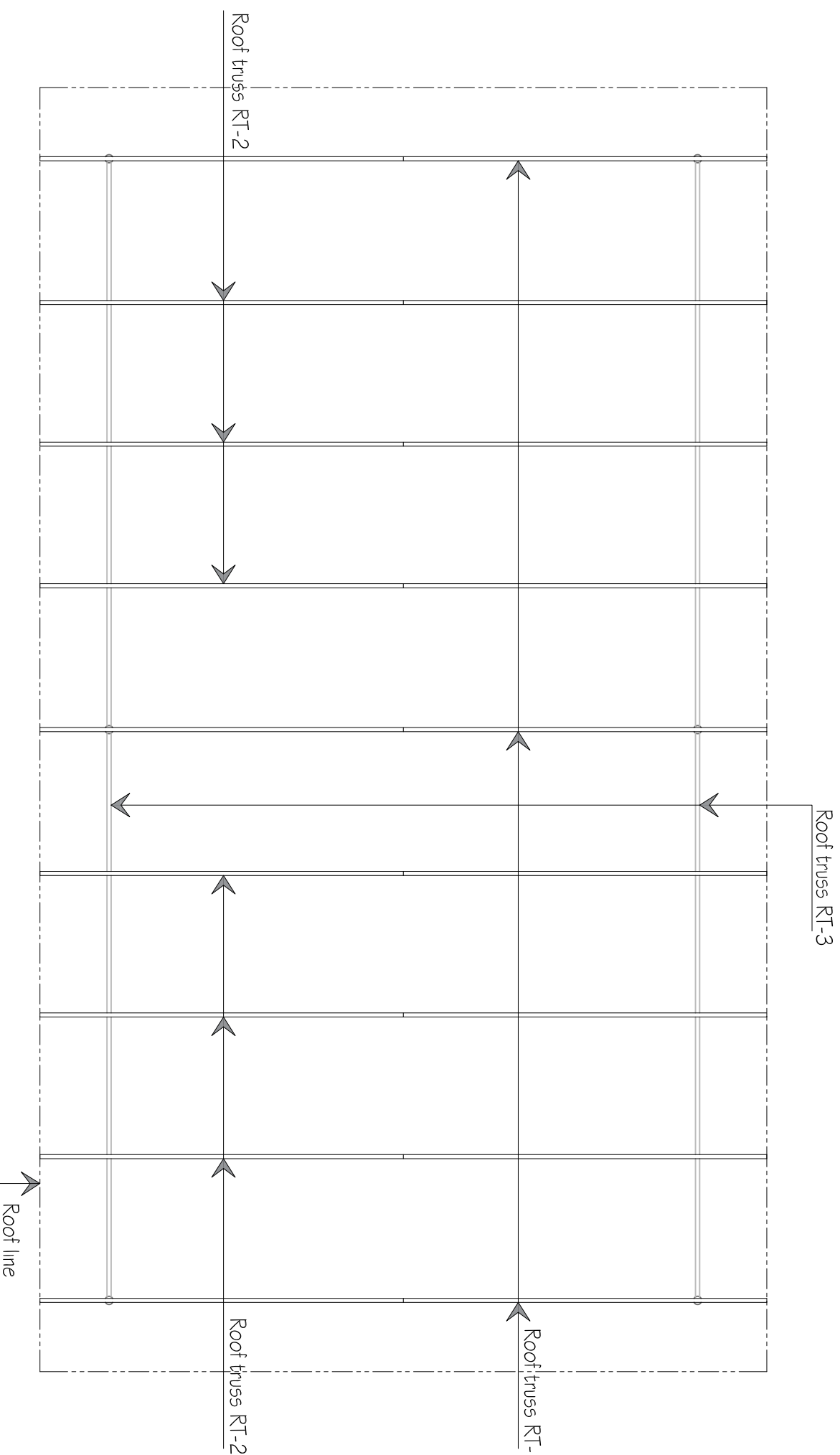


FSM

Fuel Supplies Maldives Pvt.Ltd
FSM Building 4th Floor Block - A, 200232
Bodunhuranaru Magu, Male', Maldives



The drawing, concept and design contained here the properties of Fuel Supplies Maldives Pvt. Ltd. Use of any kind or copy of whole or part of this drawing, concept or design or use on other projects or sites other than that specified on this drawing is strictly prohibited.



ROOF TRUSS LAYOUT

SCALE:

1 : 100M.

Project Title:

BOSWER SHED @ FSM S.GAN SITE

Design Approval:

25mm x25m Box pipe
Roof Battens @600mm

Recom. Approval:

Approved:

Approved:

Sheet Contents:

Revision Notes:

Location:

Island

Designed by:

Ahmed Nisham Hassan

Drawn by:

Ahmed Nisham Hassan

Project Code:

Date:

Sheet No: 1

The contractors must check all dimensions on site prior to the commencement of any work.



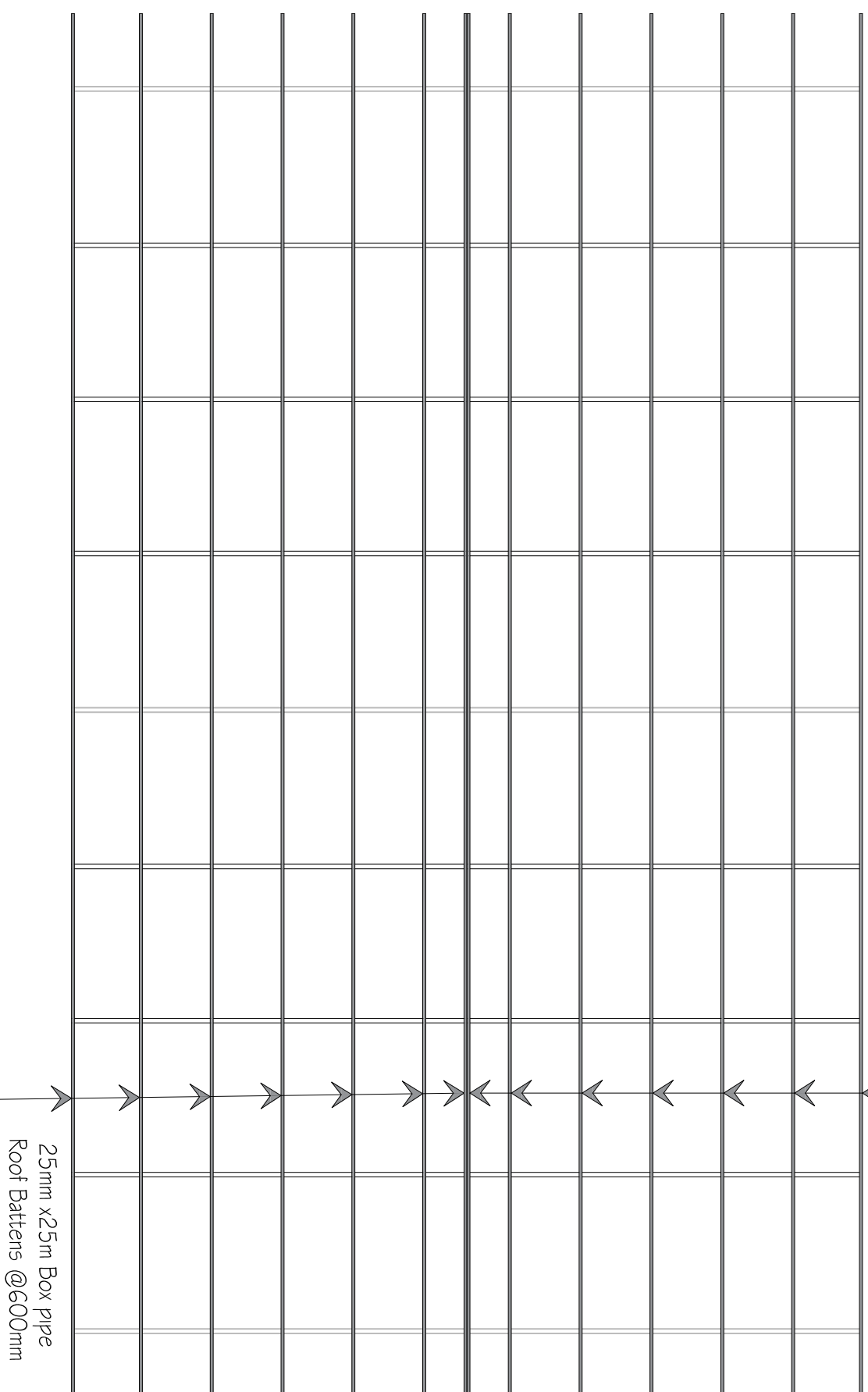
FSM
Fuel Supplies Maldives Pvt.Ltd
FSM Building 4th Floor Block - A, 200232,
Bodunthuraidaanu Magu, Male', Maldives



ROOF BATTENS LAYOUT

SCALE:

1 : 100M.



Project Title:

BOSWER SHED @ FSM S.GAN SITE

Design Approval:

.....

Recom. Approval:

.....

Approved:

.....

Sheet Contents:

.....

Revision Notes:

.....

Location:

Island

Designed by:

Ahmed Nisham Hassan

Drawn by:

Ahmed Nisham Hassan

Project Code:

Date: 14/06/2023

Sheet No: 1

The contractors must check all dimensions on site prior to the commencement of any work.

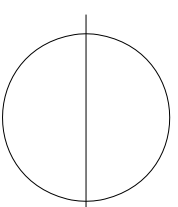
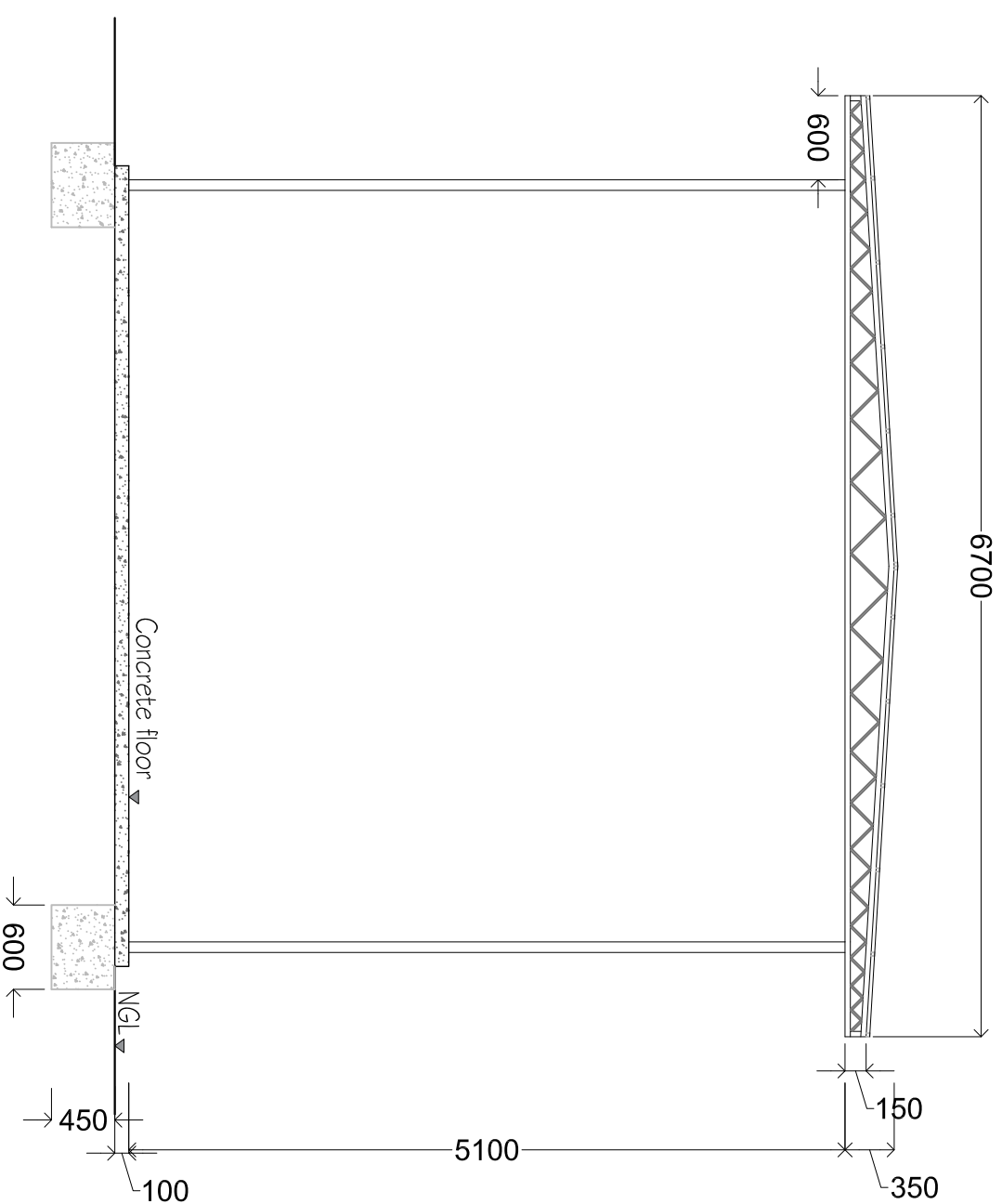


FSM

Fuel Supplies Maldives Pvt.Ltd
FSM Building 4th Floor Block - A, 200232,
Bodunhuranu Magu, Male', Maldives



The drawing, concept and design contained here the properties of Fuel Supplies Maldives Pvt. Ltd. Use of any kind or copy of whole or part of this drawing, concept or design or use on other projects or sites other than that specified on this drawing is strictly prohibited.



SECTION THRU 'A'

SCALE:

1:50M.

Project Title:

BOSWER SHED @ FSM S.GAN SITE

Design Approval:

.....

Recom. Approval:

.....

Approved:

.....

Sheet Contents:

.....

Revision Notes:

.....

Location:

Island

Designed by:

Ahmed Nisham Hassan

Drawn by:

Ahmed Nisham Hassan

Project Code:

Date: 14/06/2023

Sheet No: 1

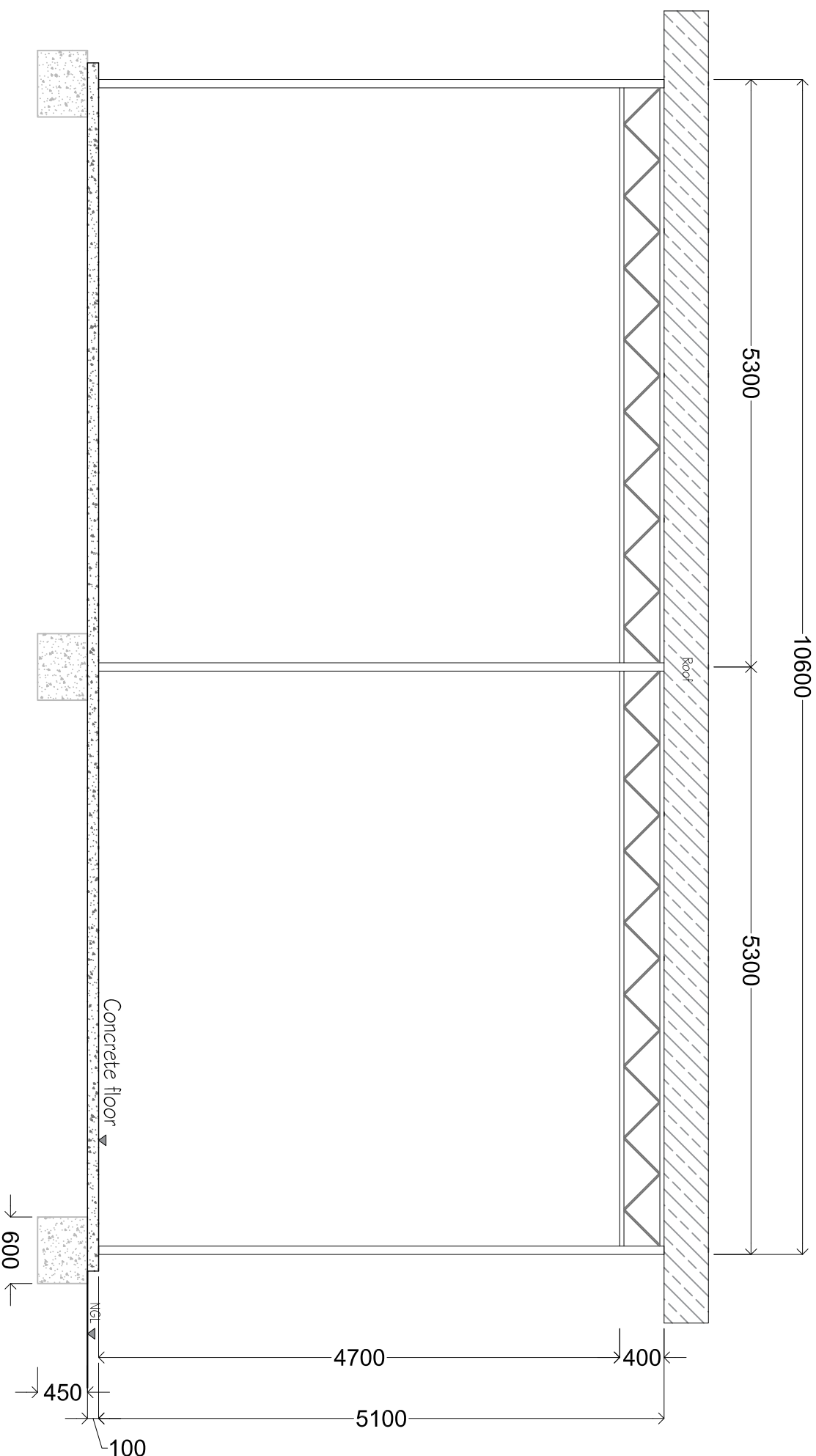
The contractors must check all dimensions on site prior to the commencement of any work.



FSM
Fuel Supplies Maldives Pvt.Ltd
FSM Building 4th Floor Block - A, 200232
Bodunburaidaanu Magu, Male', Maldives



The drawing, concept and design contained here the properties of Fuel Supplies Maldives Pvt. Ltd. Use of any kind or copy of whole or part of this drawing, concept or design or use on other projects or sites other than that specified on this drawing is strictly prohibited.



SECTION THRU 'B'

SCALE: 1:50M.

Project Title:

**BOSWER SHED
@ FSM S.GAN SITE**

Design Approval:

.....

Recom. Approval:

.....

Approved:

.....

Sheet Contents:

.....

Revision Notes:

.....

Location:

Island

Designed by:

Ahmed Nisham Hassan

Drawn by:

Ahmed Nisham Hassan

Project Code:

Date: 14/06/2023

Sheet No: 1

The contractors must check all dimensions on site prior to the commencement of any work.

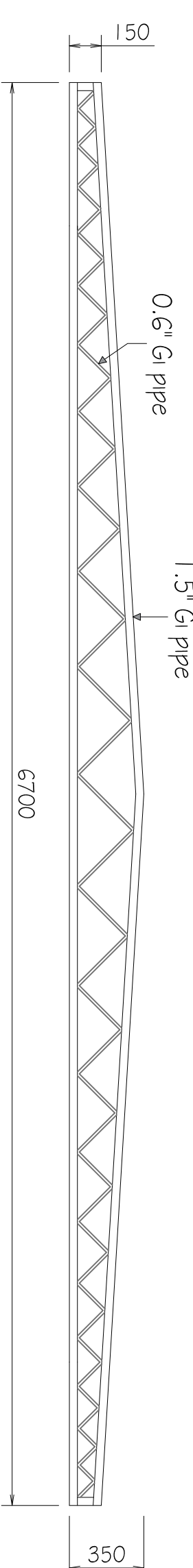


FSM

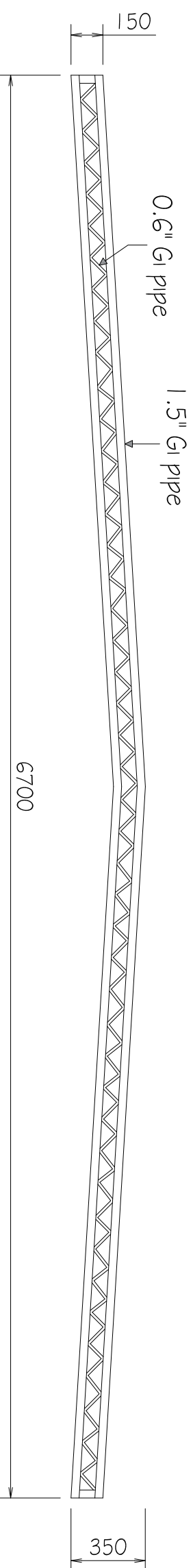
Fuel Supplies Maldives Pvt.Ltd
FSM Building 4th Floor Block - A, 200232
Bodunhuranaru Magu, Male', Maldives



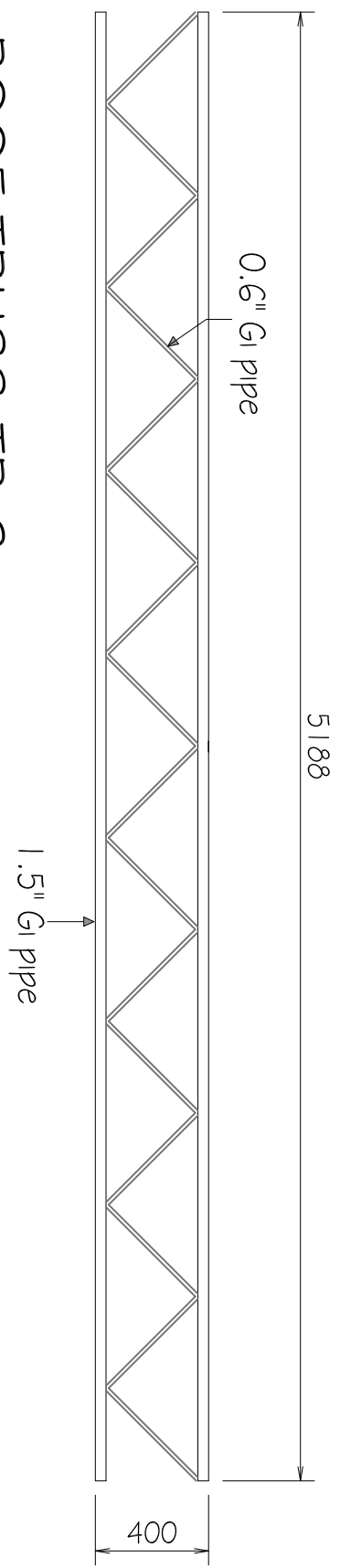
The drawing, concept and design contained here the properties of Fuel Supplies Maldives Pvt. Ltd. Use of any kind or copy of whole or part of this drawing, concept or design or use on other projects or sites other than that specified on this drawing is strictly prohibited.



ROOF TRUSS TR-1



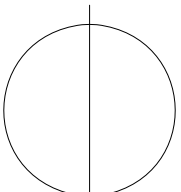
ROOF TRUSS TR-2



ROOF TRUSS TR-3

ROOF TRUSS DETAILS

SCALE:



N.T.S.

Project Title:

BOSWER SHED @ FSM S.GAN SITE

Design Approval:

.....

Recom. Approval:

.....

Approved:

.....

Sheet Contents:

.....

Revision Notes:

.....

Location:

Island

Designed by:

Ahmed Nisham Hassan

Drawn by:

Ahmed Nisham Hassan

Project Code:

Date: 14/06/2023

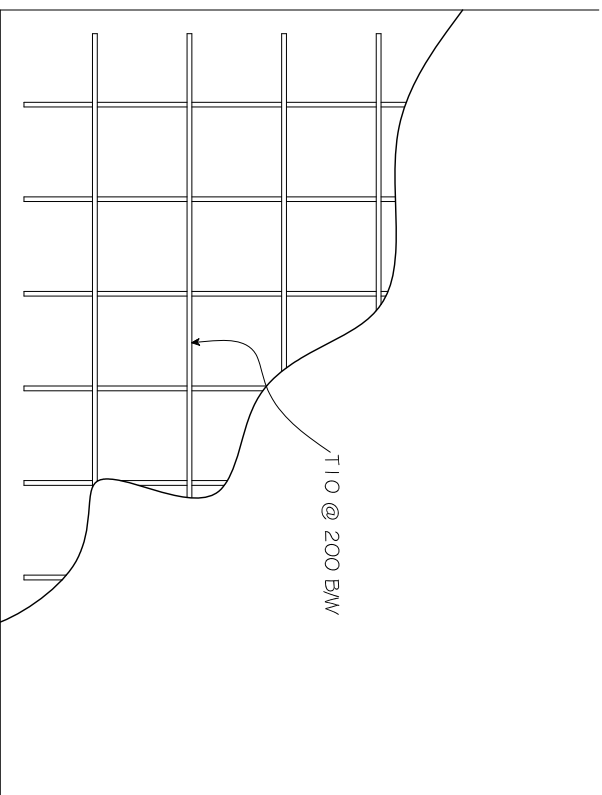
Sheet No: 1

The contractors must check all dimensions on site prior to the commencement of any work.

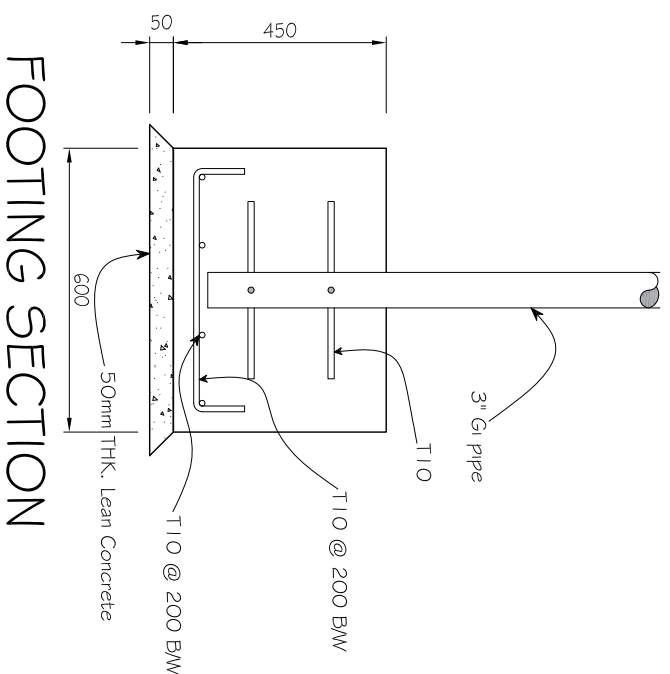


FSM

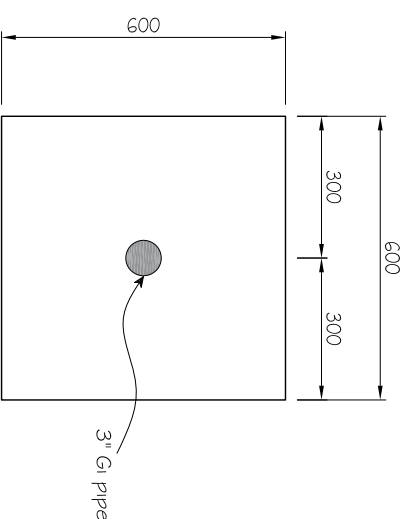
Fuel Supplies Maldives Pvt.Ltd
FSM Building 4th Floor Block - A, 200232,
Bodunburaidanu Magu, Male', Maldives



CONCRETE FLOOR DETAIL
SCALE: N.T.S.



FOOTING SECTION



FOOTING PLAN

FOUNDATION DETAIL
SCALE: N.T.S.

The drawing, concept and design contained here the properties of Fuel Supplies Maldives Pvt. Ltd. Use of any kind or copy of whole or part of this drawing, concept or design or use on other projects or sites other than that specified on this drawing is strictly prohibited.