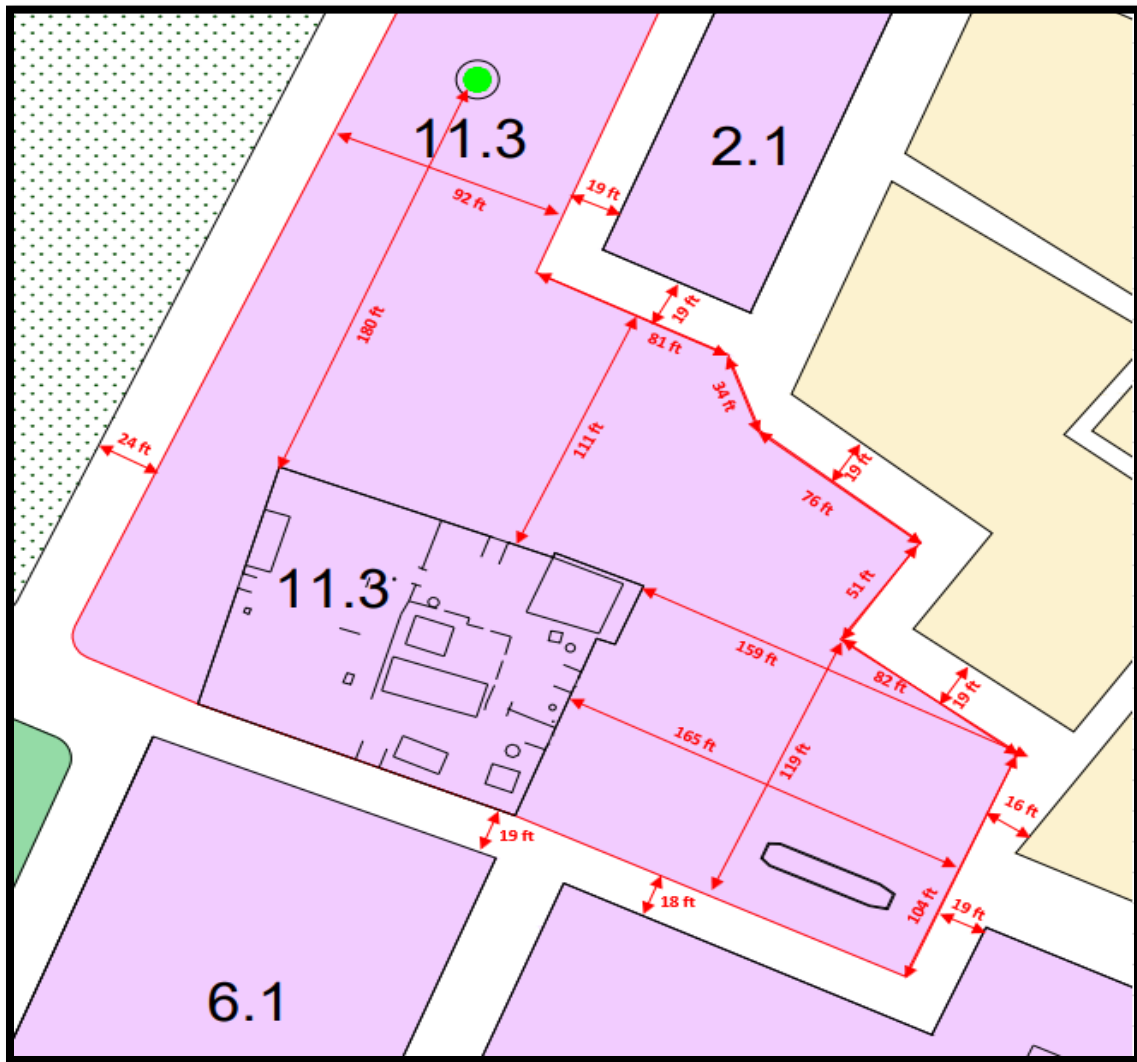


Information Sheet of Landscaping Ha.Utheemu Palace surrounding Area
Project

Concept of landscaping Ha.Utheemu.Uthimu Palace surrounding area, detailed drawings in accordance with concept document and technical specification, finishing and prized BOQ.



1. The landscape plan should be designed to add value and protection to the property without altering its cultural value-

بِسْمِ اللّٰهِ الرَّحْمٰنِ الرَّحِیْمِ



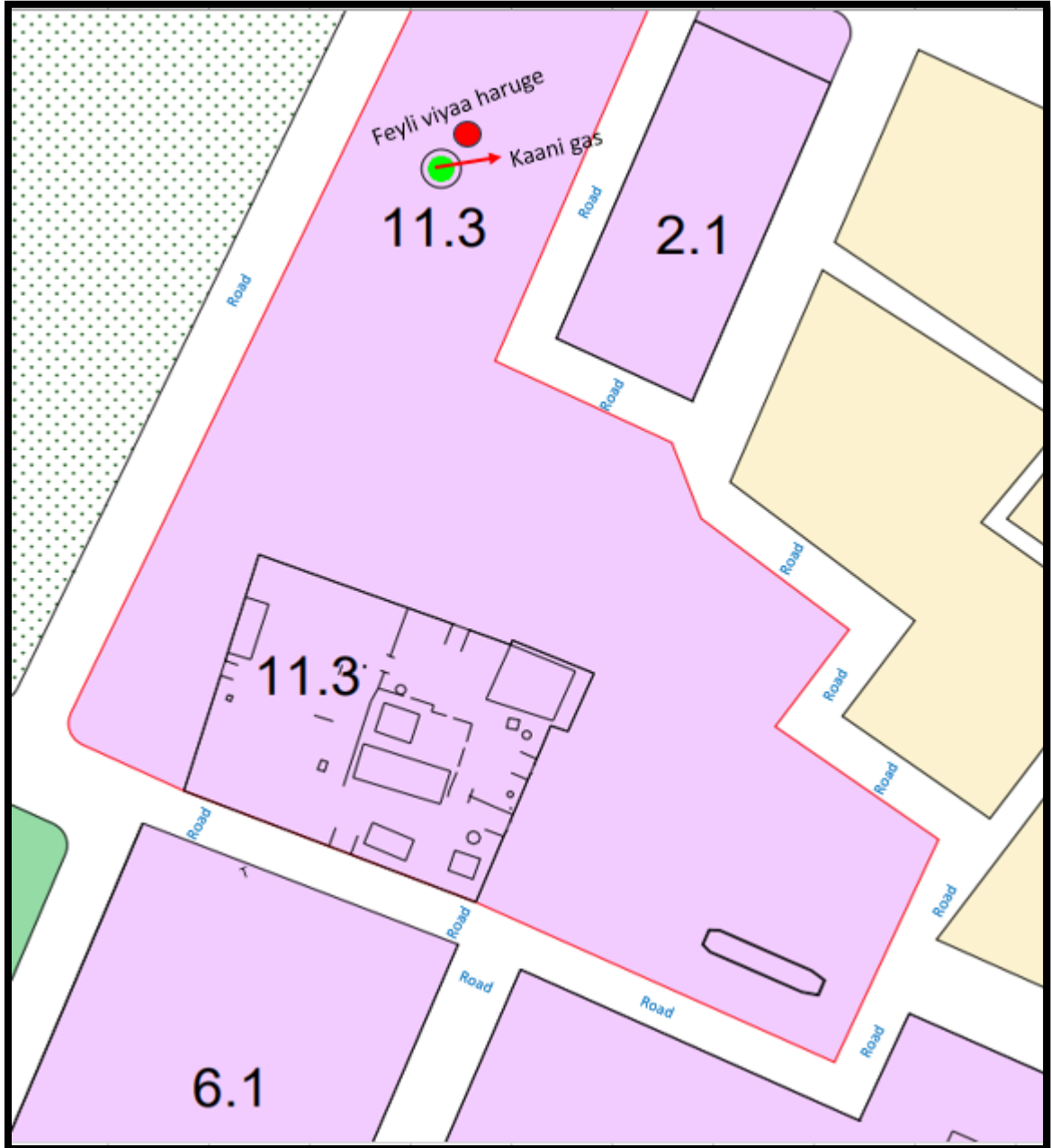
ދިވެހިރާއްޖޭގެ ޖުމްހޫރިއްޔާ ގެ ދެކުނު ތިލަދުނުމަތީ ސަރަޙައްދުގެ ޖުމްހޫރީ ޖަލްސާގެ ސެކްރެޓޭރިއެޓް

SECRETARIAT OF UTHEEM COUNCIL
NORTH THILANDHUNMATHI, REP. OF MALDIVES

2. The sections need to include in the landscape plan are:

- a. To show nationality (design a place to put a large flag)
- b. Making a model of Traditional weaving hut “ Feyli viyaa haruge “ neaxt to the Historical Tree “ Kadakaanigas “ (It can be shown to the visitors how to do the work).
- c. Waiting area for visiting guests (with digital queue system in waiting area)
- d. Parks (child and adult friendly).
- e. Design of the museum and outdoor area of the Boduthakurufaanu Memorial Center to show the culture of Utheemu.
- f. Garbage bins are placed.
- g. Design of a heritage trail to connect to other cultural heritage areas by installing sign boards on the roads and the location and design of the plaque of the sponsor of the work.
- h. Make a pond in front of the palace without any damage to the palace (the pond should not lose the originality of the place and include a boundary of garden trees around it).

The chart marks the locations and roads where the parts of the landscape should be included



Road to the historical mosque (Kandhuvalu Mosque)





3. While preparing the landscape plan, you should pay attention to:

- a. Design the location to ensure the security and safety of the palace area (identify locations for surveillance cameras, design and plan for a security room if necessary).
- b. Have easy circulation on the palace area and heritage trail (visitors can easily walk and accessibility for everyone) vehicles should not be accessible to the vacant land in front of the palace, and boundaries.
- c. Design of circulation flow for palace area and museum located in BMC grounds.
- d. The lighting, water and electricity plan of the Palace area and Heritage Trail should be designed to accommodate large events as well as maintenance of the venue (the Palace area is a venue for flag ceremonies and other major national events).
- e. Design outdoor chairs/benches/boxes to be of good quality that will last longer in the rain and sun.
- f. The materials used in the landscape plan should be available in Maldives and easy to maintain in a sustainable manner.
- g. The plants in the landscape plan should be easy to maintain without damaging the site.
- h. Develop a site plan that identifies main accesses and service accesses to ensure waste management of the site.
- i. Proper drainage system/plan in the palace grounds.
- j. Develop site plans to ensure that the palace area is fire safe (the palace area is designated as a non-smoking area and a certain area is smokable).

4. The list of drawings to be submitted is given below

- a. Site plan (marking buildings and areas, landscape, dustbins, benches, outdoor lights, restrooms, location information boards, etc.).
- b. Current landscape plan (trees, roads and circulation marked).
- c. Landscape plan after design (with trees, roads and circulation marked).



- d. Heritage Walk Trail Plan (for printable quality on large board) - colored chart marking cultural heritage sites and route to them.
- e. Floor plans of buildings (floor plan, 4 elevations, 2 sections, roof plan) in case of new building in the whole area.
- f. Detail Engineer Drawings.
- g. Fire escape plan for the entire area.
- h. Detail drawings (details) (e.g., monuments, benches, drains, museum furniture, cabinets, etc.)
- i. Provide interior furniture and layout of the museum of Boduthakurufaanu Memorial centre and outdoor area.
- j. Mechanical / Electrical Plan.
- k. Drainage Plan.
- l. Surveillance Plan (Security Camera).
- m. Plumbing and Water Supply Plan.
- n. Interior Finishings Descriptions.

5. Prized BOQ

- a. The cost of the parts to be demolished / removed at the time of development of the entire area is known separately.
- b. Must be constructed (so that the values of individual parts of the concept of the whole are known).
- c. Interior Finishing (Material List).
- d. Lighting, Electrical, Surveillance, Mechanic, Plumbing, Drainage
- e. Fire
- f. Landscape section (trees, dustbin, bench, outdoor light, location information board).

بِسْمِ اللّٰهِ الرَّحْمٰنِ الرَّحِیْمِ



ދިވެހިރާއްޖޭގެ ޖުމްހޫރިއްޔާ ގުޅިގެން
ދެކުނު ތިލަންދުނުމަތީ ސަރަޙައްދުގެ ޖުމްހޫރީ ޖަނާބު ސަރުކާރުގެ ދަށުން

SECRETARIAT OF UTHEEM COUNCIL
NORTH THILANDHUNMATHI, REP. OF MALDIVES

6. Create 3D perspectives of how the entire area will look during the day and night.
7. Share hard and soft copies of drawings and documents (share soft and PDF files of AutoCAD drawings).
8. Detail documents shall be prepared after submission of draft documents to the council for approval.
9. Work on a timeline for submitting drawings.
10. Act No. 2019/12 (Cultural Heritage Act of Maldives) and the rules issued in connection with this Act.
11. Transportation and site visit expenses for this work shall be borne by the applicant himself.

75-76