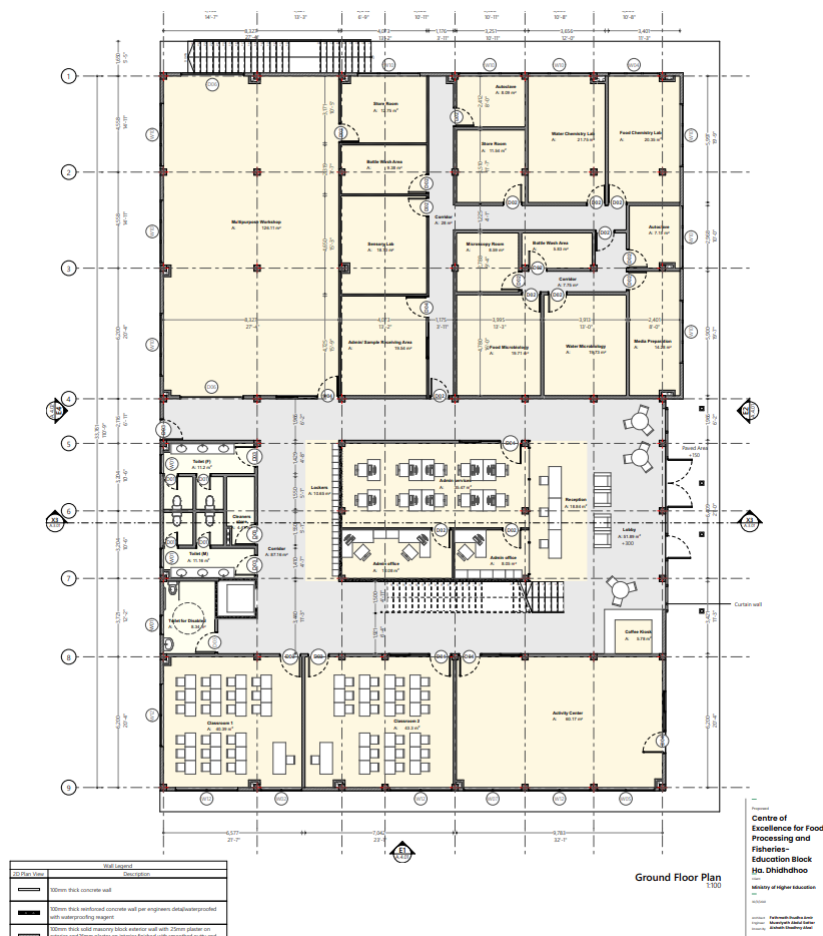


PROCUREMENT OF FURNITURE FOR TVET WORKSHOPS

As the transition to assuming control of the ground floor at Ha. Atoll Technical Institute nears, it is imperative that the TVET workshops are fully furnished before operations can begin. Emphasis is placed on ensuring that the workshops are fully furnished and equipped, thereby facilitating the efficient implementation of programs for skill development. By attentively furnishing the workshop, an environment conducive to hands-on learning and extensive practical training is created, laying the groundwork for the successful launch of operations.

Equipment for these workshops is purchased under a different procurement by world bank. This document only focuses on the furniture of the workshop that comprises of storage shelves, workstation benches and lecturer station.

TVET Furniture is needed for the following workshops



- **MULTI-PURPOSE WORKSHOP**

Various different Skills programs will be conducted in the multi-purpose workshop.

- Automotive engineering
- Marine Engineering
- Electric and Electronics
- Welding
- Refrigeration and air-conditioning

WORKSTATION BENCHES

Workstation benches in TVET workshops are purpose-built furniture units designed to provide students with dedicated spaces for hands-on learning and skill development. These benches are equipped with tools, storage compartments, and work surfaces tailored to specific vocational tasks. They offer a safe and organized environment where students can practice practical skills, work individually or collaboratively, and simulate real-world work scenarios. Workstation benches play a crucial role in fostering efficient, focused, and practical learning experiences within technical and vocational education and training settings.

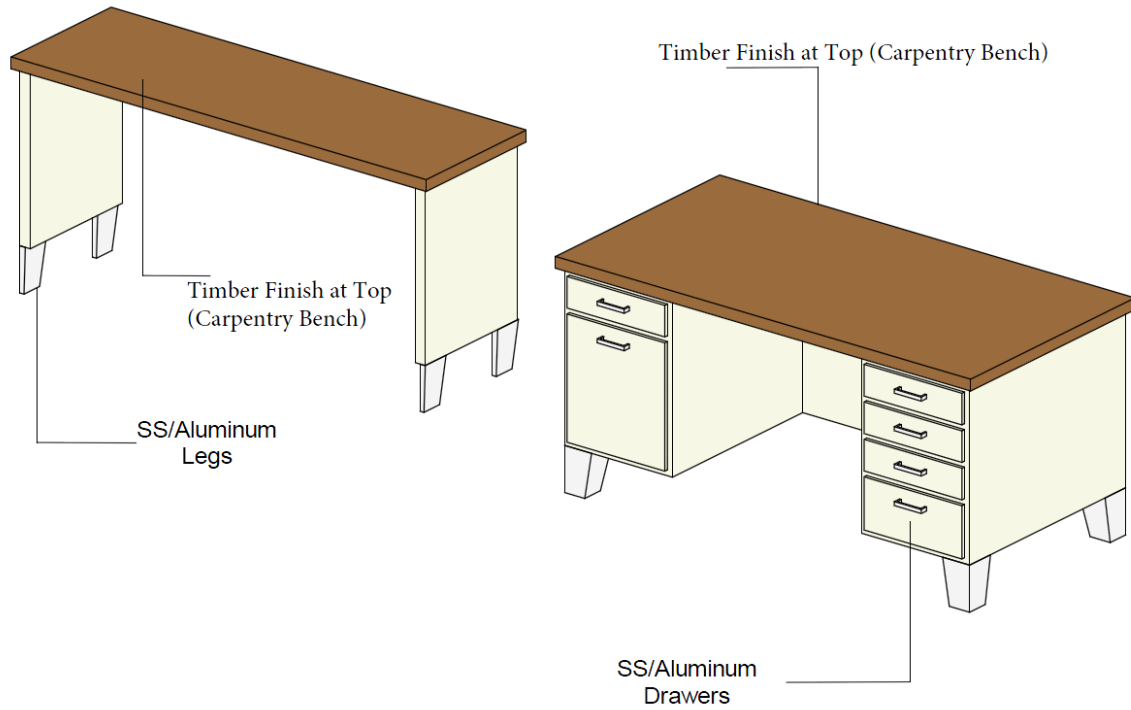
Type A



Type B



Item	Description	Qty
Workstation benches (Metal Type A)	Frame & Legs Needs to be Metal with proper protective coating. Top Finish needs to be min 3mm Stainless steel (Scratchproof sheet) Approx. Dimensions 2400L x 1200W x 850H Drawers To be included.	6
Workstation benches (Metal Type B)	Frame & Legs Needs to be Metal with proper protective coating. Top Finish needs to be min 3mm Stainless steel (Scratchproof sheet) Approx. Dimensions 2400L x 600W x 850H Drawers To be included.	12



Bench 1 (2440L x 600W x 850H) mm

Table 1 (2440L x 1220W x 850H) mm

Item	Description	Qty
Workstation benches (Wood bench 1)	Frame & Legs Metal/Hardwood Timber with proper protective coating. Top Finish needs to be min 20mm thick Timber Solid hardwood. Approx. Dimensions 2440L x 600W x 850H.	6
Workstation Table (Wood Table 1)	Frame & Legs Metal/Hardwood Timber with proper protective coating. Top Finish needs to be min 20mm thick Timber Solid hardwood. Approx. Dimensions 2440L x 1220W x 850H Drawers To be included.	6

Storage racks

Storage racks in workshop for TVET provide efficient tool organization, easy access, and enhanced safety. They optimize space, streamline training, and maintain a professional environment. Well-designed racks facilitate quick tool retrieval, improving learning outcomes and overall workshop functionality.



Item	Description	Qty
Storage racks	Frame Needs to be Metal with proper protective coating / Water resistance and weatherproof. Top Finish of racks to be Stainless steel (Scratchproof sheet) Approx. Dimensions 2400L x 450W x 2000H	12

Lecturer table & Chair



Item	Description	Qty
<p>Lecturer station</p>	<ul style="list-style-type: none"> - 1 nos Table & 1 nos Chair <p><u>Executive Office Table</u></p> <ul style="list-style-type: none"> - Executive Office Table - Gloss finishing - Color: Mainly white, Grey and black / Other colors allowed slightly. - Material: Particle Board with Melamine panel - Table Top: Approximately 25mm - Leg: Approximately 1.2mm Thickness Metal Chromed Leg - Dimensions: Approximately L2200*D2000*H750mm - In-built drawer or separate drawer to be installed under the table top. Preferred size: H 5", W 12" , L14" , must have a lock 	<p style="text-align: center;">04</p>
	<p><u>Executive Chair</u> Contemporary Office Chair Color: Gray</p>	