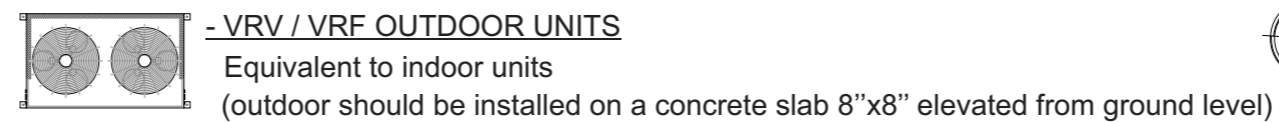
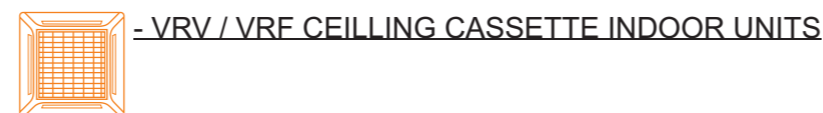


PIPE LINE DETAILS



EQUIPMENT DETAILS



NOTE:

*VRV / VRF System is to be quoted floorwise

*Insulation should be minimum 1inch thickness (SUPERLON).

*Pipe line & drain pipe (outside the building) should be laid in PVC CASING.

ELECTRICAL

*Contractor needs to install electrical socket's / waterproof isolator for each unit which requires power (indoor / outdoor).

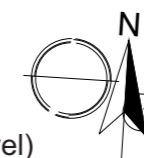
- AIR CURTAIN X 3 LOCATION
(refer to drawing for measurements)

- INDOOR UNIT BTU DETAILS

- 1 - FLAMMABLE STORE: 30,000BTU X 2 UNIT.
- 2 - BONDED STORE: 18,000BTU X 6 UNIT.
12,000BTU X 1 UNIT.
- 3 - QUARANTINE STORE: 12,000BTU X 1 UNIT.
- 4 - UNSERVICABLE STORE: 18,000BTU X 1 UNIT.
- 5 - LOGISTIC OFFICE: 12,000BTU X 1 UNIT.
- 6 - PACKING AREA: 24,000BTU X 1 UNIT.
- 7 - RECEIVING AREA: 24,000BTU X 1 UNIT

- OUTDOOR UNIT BTU DETAILS

- 1- 270,000BTU OUTDOOR UNIT

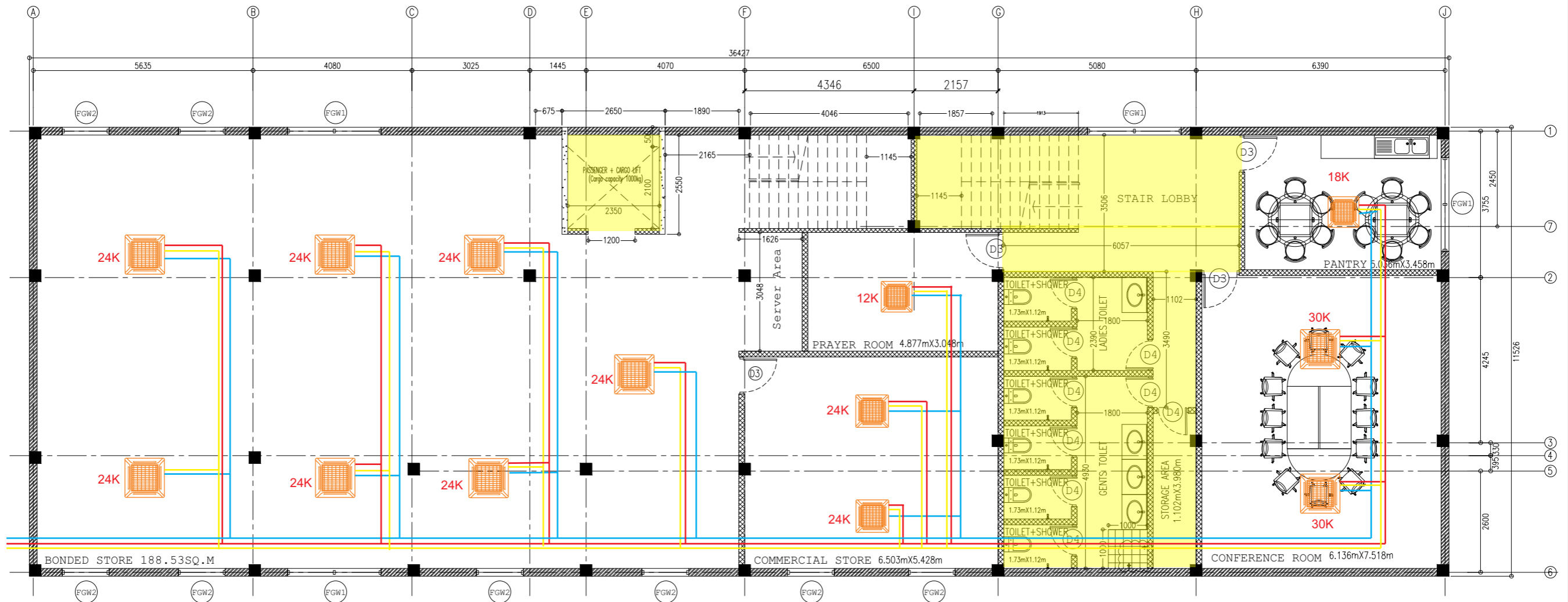


GROUND FLOOR PLAN

SD-A-01-Rev03

SCALE=1:100

All areas other than



- INDOOR UNIT BTU DETAILS

- 1 - PRAYER ROOM: 12,000BTU X 1 UNIT.
- 2 - BONDED STORE: 24,000BTU X 7 UNIT.
- 3 - COMMERCIAL STORE: 24,000BTU X 2 UNIT.
- 4 - PANTRY: 18,000BTU X 1 UNIT.
- 5 - CONFERENCE ROOM: 30,000BTU X 2 UNIT.

- OUTDOOR UNIT BTU DETAILS

- 1- 306,000BTU OUTDOOR UNIT

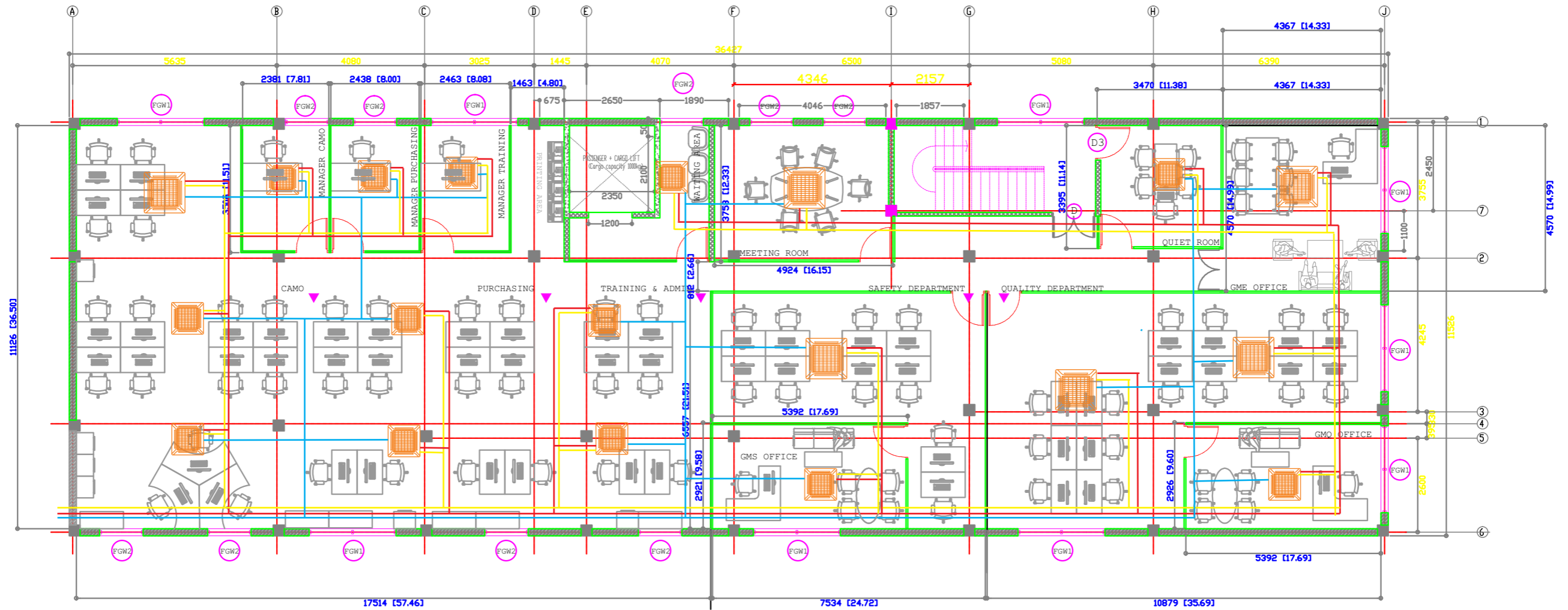
	6Inch Hollow block wall
	4Inch Hollow block wall
	RC wall(See Details) SD-IASL-EB-S-06



FIRST FLOOR PLAN

01-SD-A-02-Rev02

SCALE=1:100



- INDOOR UNIT BTU DETAILS

- | | |
|---|---------------------|
| 1 - GME OFFICE: | 18,000BTU X 1 UNIT. |
| 2 - QUIET ROOM: | 12,000BTU X 1 UNIT. |
| 3 - MEETING ROOM: | 18,000BTU X 1 UNIT. |
| 4 - WAITING AREA: | 9,000BTU X 1 UNIT. |
| 5 - MANAGER TRAINING: | 9,000BTU X 1 UNIT. |
| 6 - MANAGER PURCHASING: | 9,000BTU X 1 UNIT. |
| 7 - MANAGER CAMO: | 9,000BTU X 1 UNIT. |
| 8 - CAMO / PURCHASING / TRAINING & ADMIN: | 18,000BTU X 7 UNIT. |
| 9 - SAFETY DEP: | 24,000BTU X 1 UNIT. |
| 10 - GMS OFFICE: | 18,000BTU X 1 UNIT. |
| 11 - QUALITY DEP: | 18,000BTU X 2 UNIT. |
| 12 - GMQ OFFICE: | 12,000BTU X 1 UNIT. |

- OUTDOOR UNIT BTU DETAILS

- 1- 300,000BTU OUTDOOR UNIT

	6Inch Hollow block wall
	4Inch Hollow block wall
	RC wall(See Details) SD-IASL-EB-S-06

SECOND FLOOR PLAN