
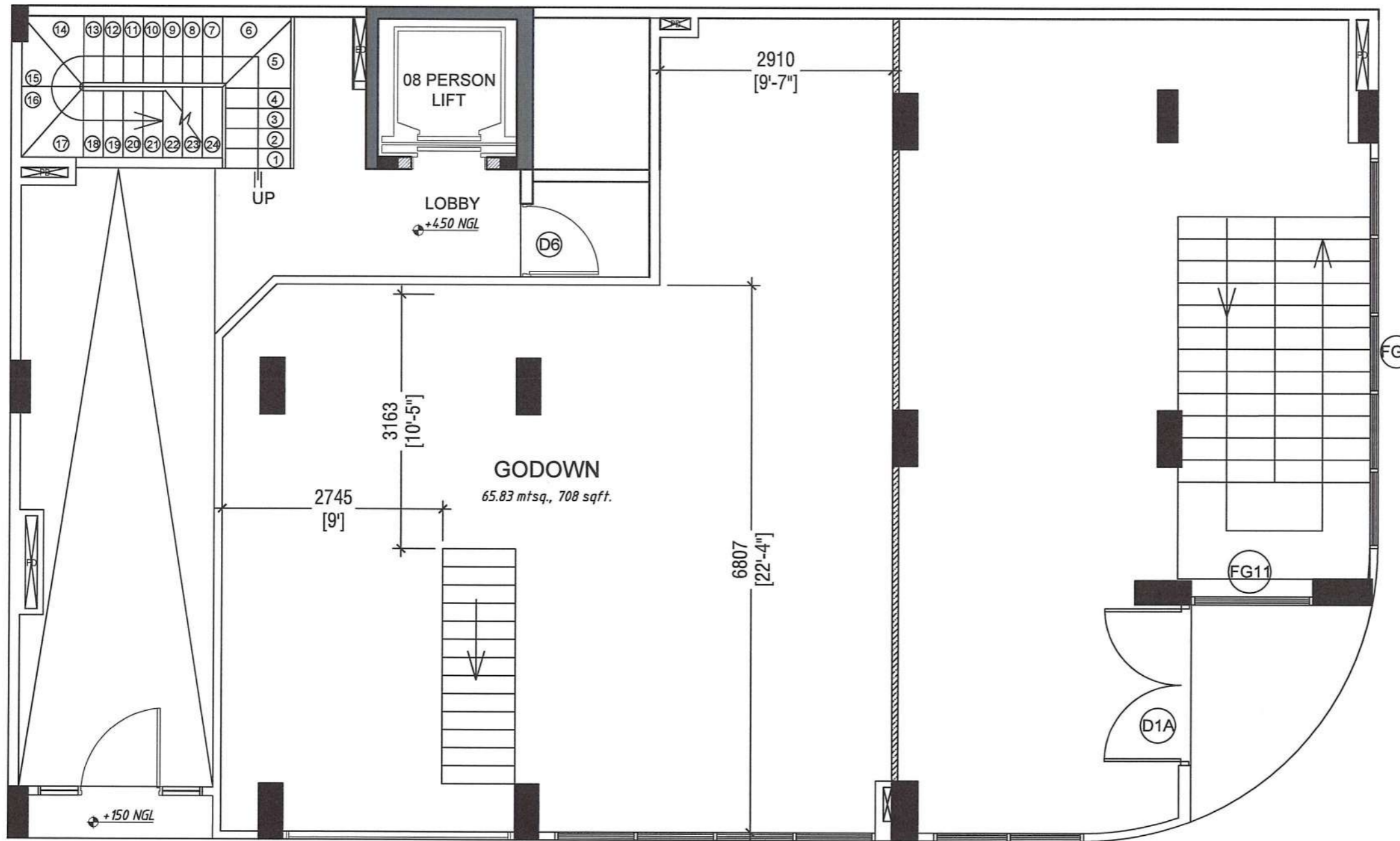


GROUND FLOOR PLAN


SCALE 1: 100

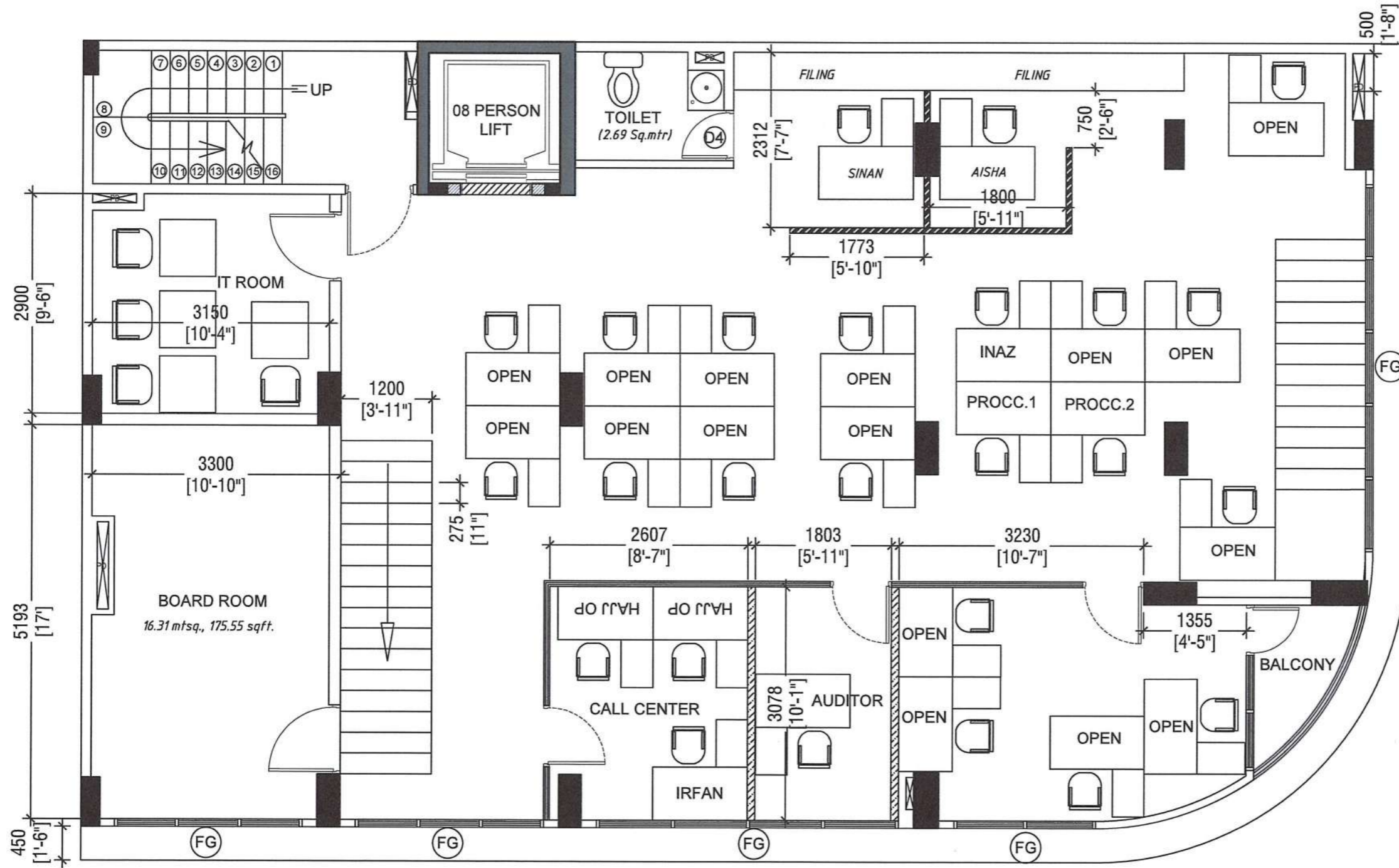
 4" thk. Gypsum board partition with WPC door wall full height



RAISED GROUND FLOOR PLAN


SCALE 1: 100

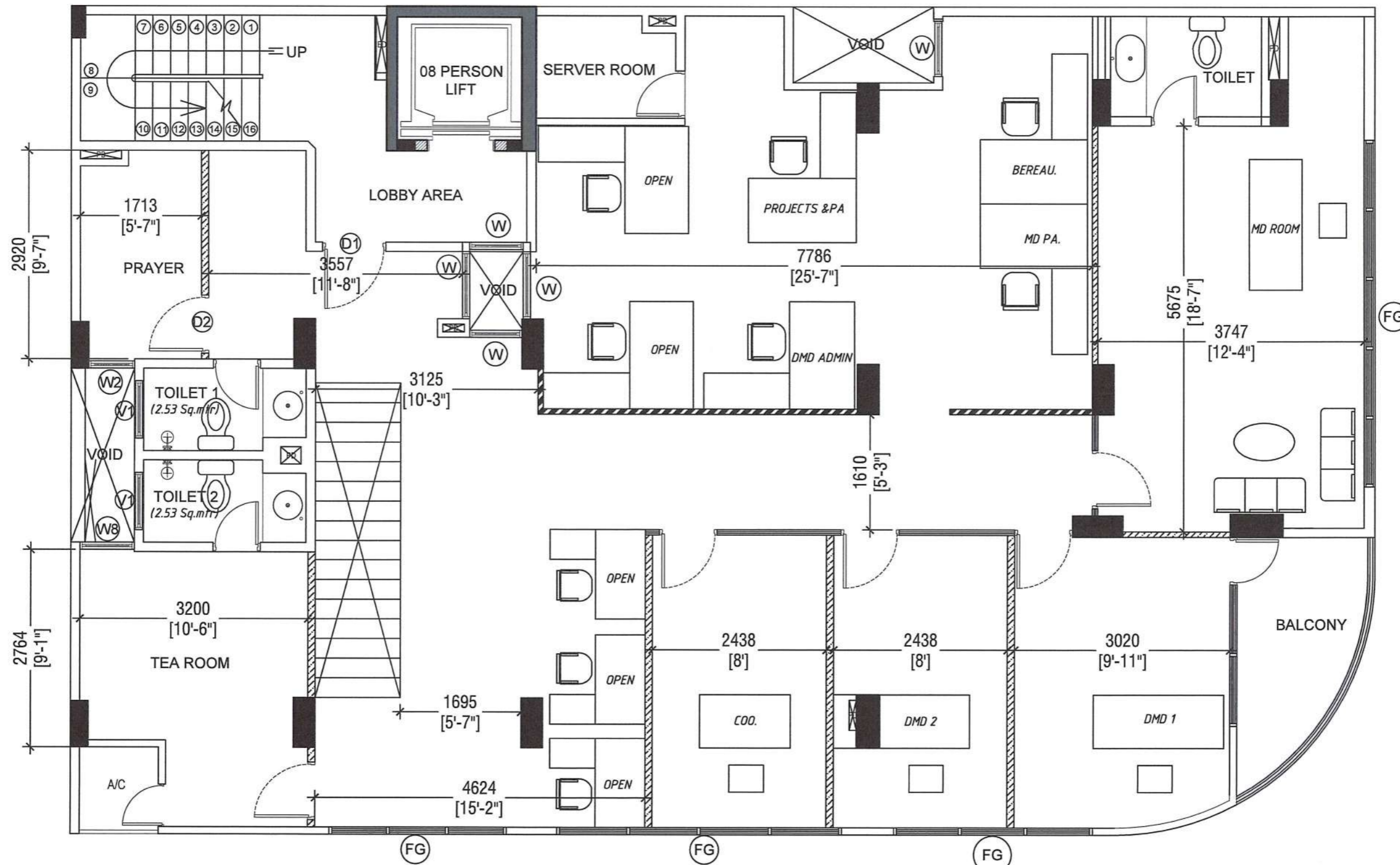
 4" thk. Gypsum board partition with WPC door wall full height



FIRST FLOOR PLAN


SCALE 1: 100


-  4" thk. Gypsum board partition with WPC door wall full height with glass
-  Aluminum framed glass partition with height 1200mm
-  Aluminum partition full height with glass door




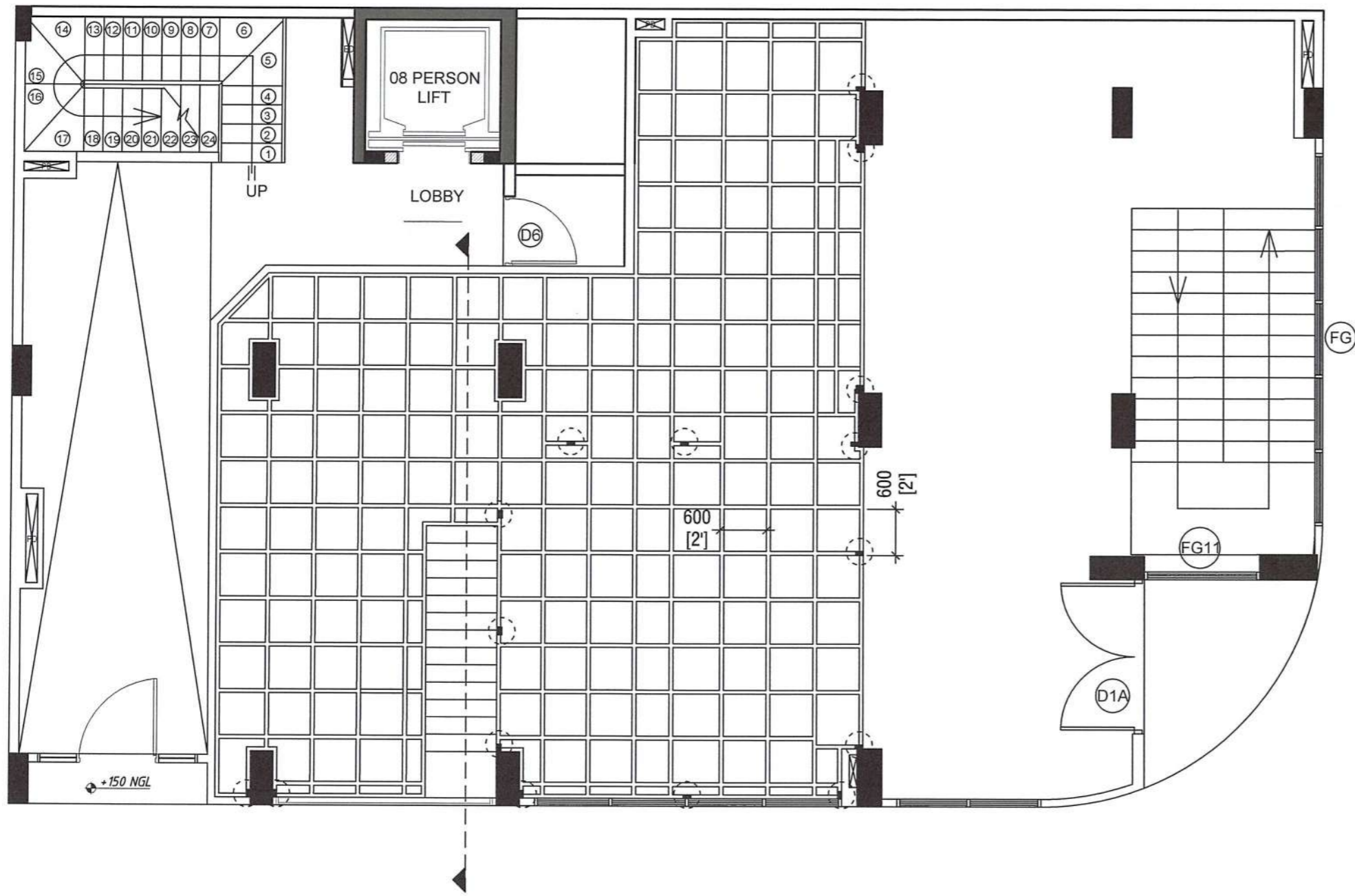
SECOND FLOOR PLAN

SCALE 1: 100

 4" thk. Gypsum board partition with WPC door wall full height with glass

 Aluminum framed glass partition with height 1200mm

 Aluminum partition full height with glass door

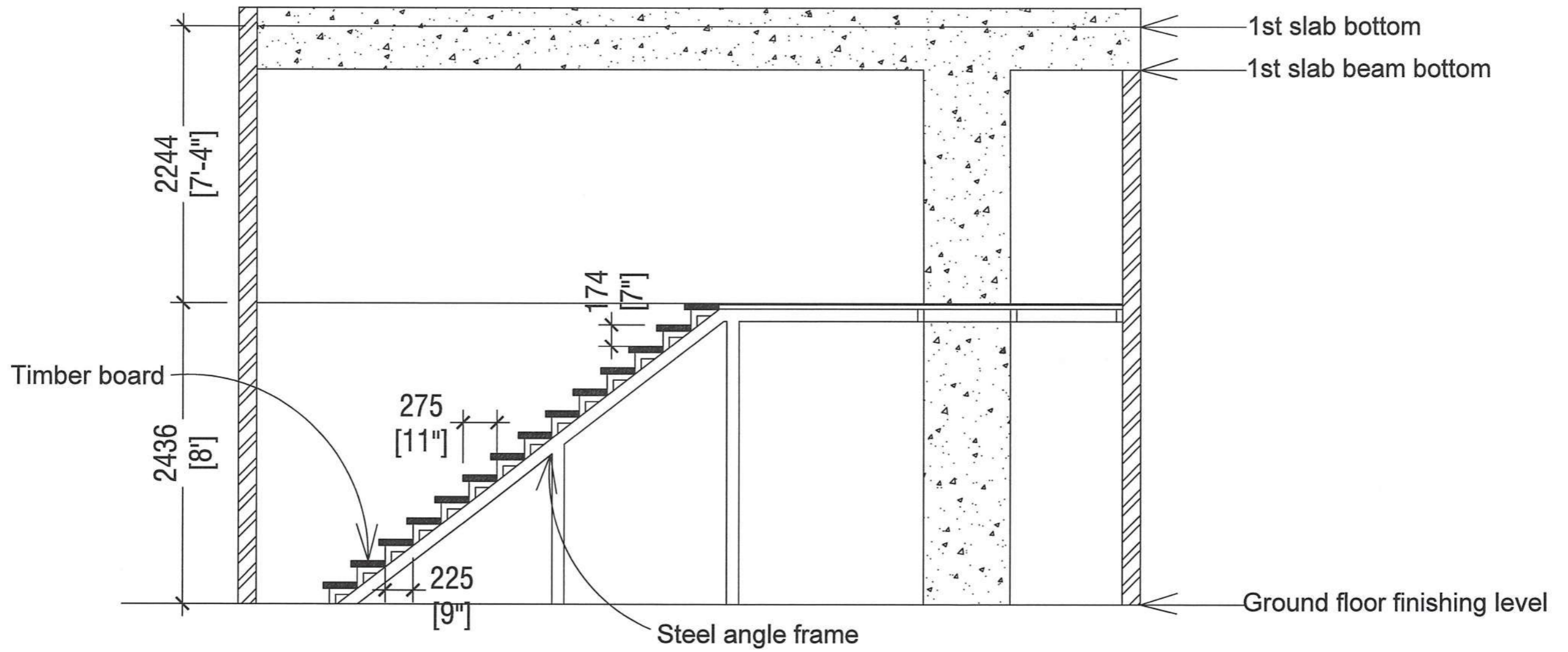


RAISED GROUND FLOOR PLAN

SCALE 1: 100

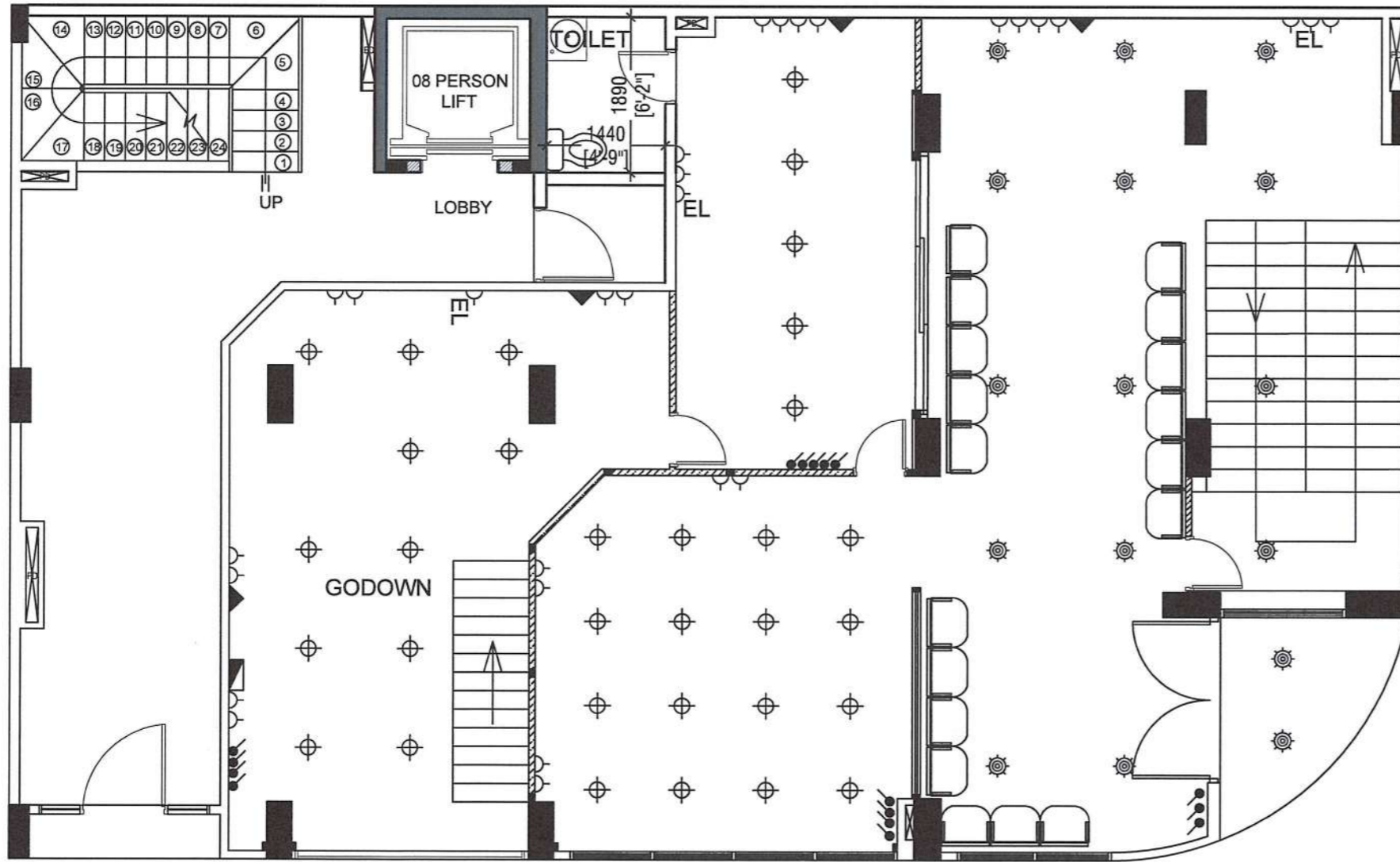
-  4"x2" GI column
-  4"x4" GI column

Note: Deck support on masonry walls with anchor bolt 600mm c/c
Deck frame 4"x2" hollow section



Ground floor section

SCALE 1: 100



GROUND FLOOR ELECTRICAL LAYOUT
 SCALE 1: 100

-  Ceiling Fan
-  Ceiling Mounted Light
-  Distribution Board
-  Emergency Light @ 2100 Level
-  13amp. Socket @ 450 Level (Unless Specified)
-  Phone & Internet Outlet @ 450 Level

Note: Refer A/C drawing for 15Amp socket location



RAISED GROUND FLOOR ELECTRICAL LAYOUT

SCALE 1: 100



Ceiling Fan



Ceiling Mounted Light



Distribution Board



Emergency Light @ 2100 Level

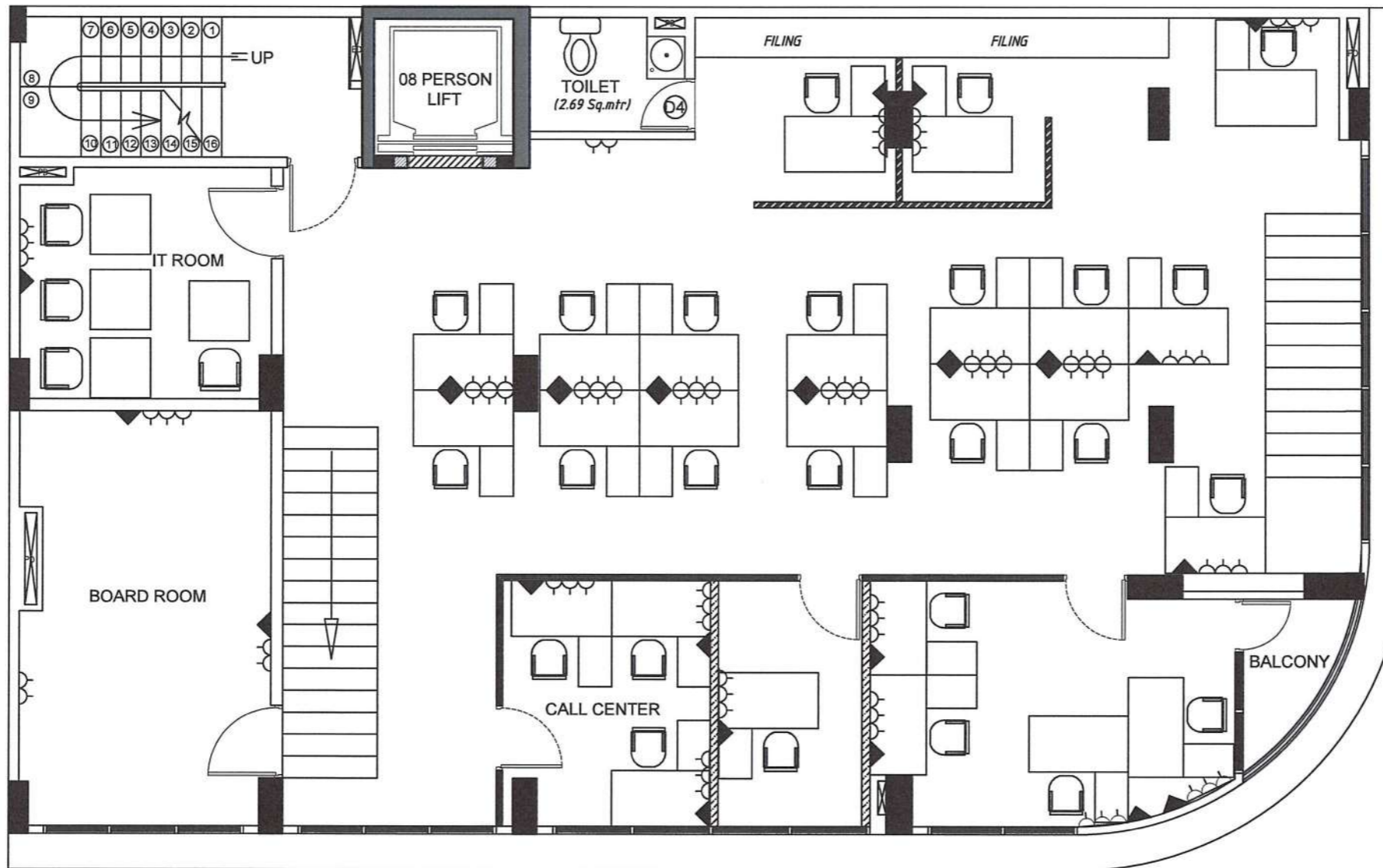


13amp. Socket @ 450 Level (Unless Specified)



Phone & Internet Outlet @ 450 Level

Note: Refer A/C drawing for 15Amp socket location



FIRST FLOOR PLAN (29-01-2024)

SCALE 1: 100



Ceiling Fan



Ceiling Mounted Light



Distribution Board



Emergency Light @ 2100 Level

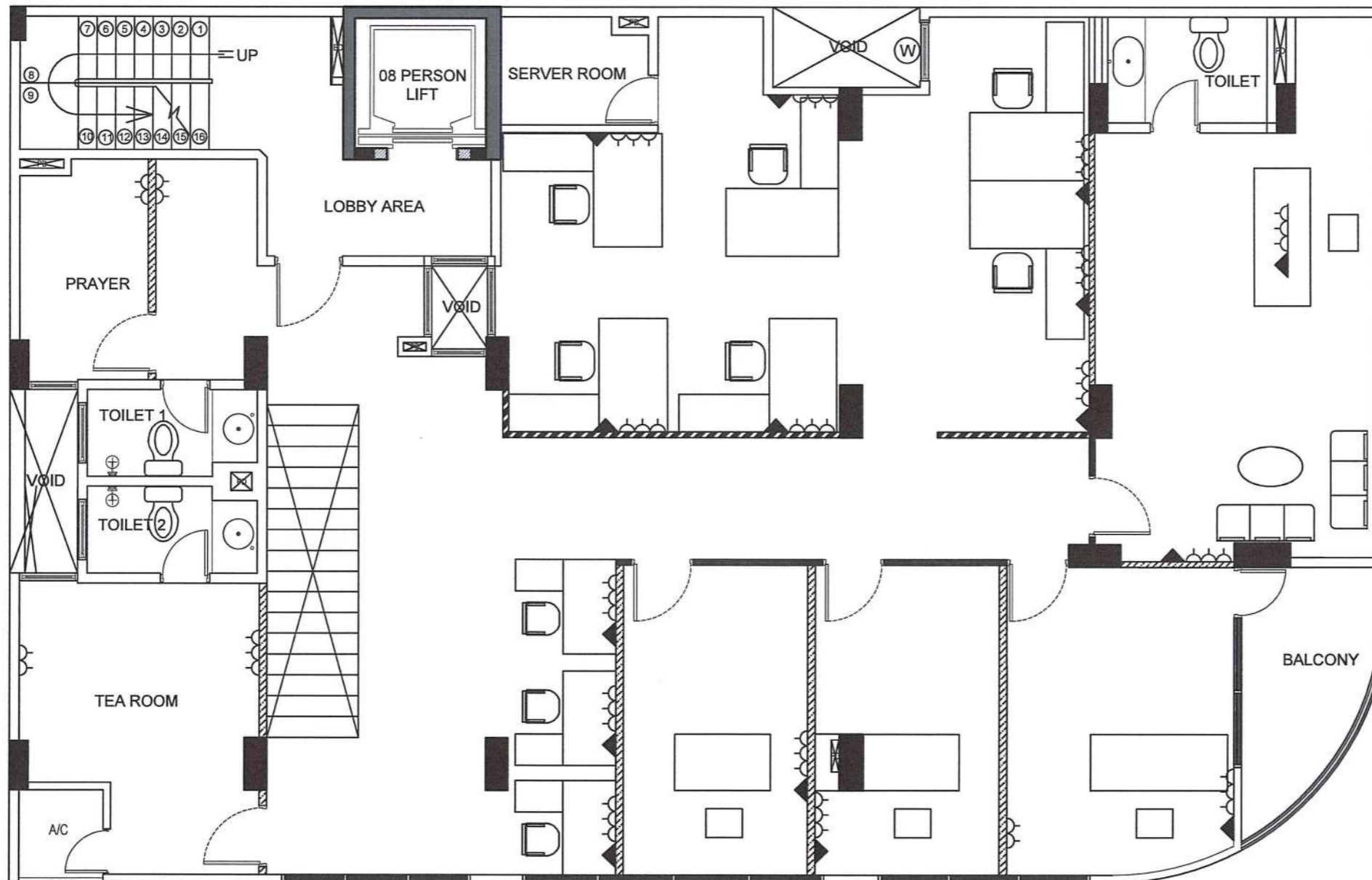


13amp. Socket @ 450 Level (Unless Specified)



Phone & Internet Outlet @ 450 Level

Note: Refer A/C drawing for 15Amp socket location



SECOND FLOOR ELECTRICAL LAYOUT

SCALE 1: 100



Ceiling Fan

Ceiling Mounted Light

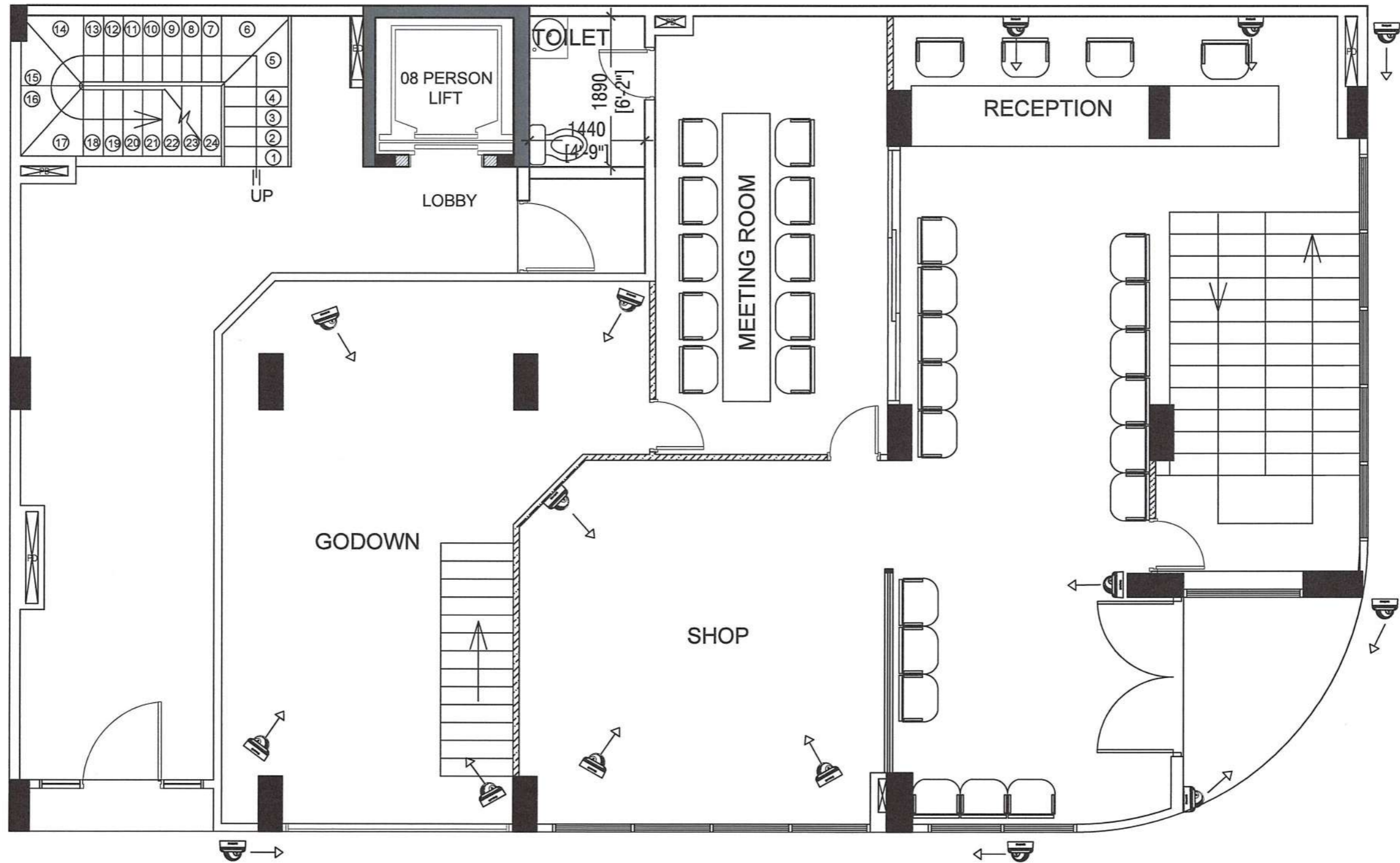
Distribution Board

Emergency Light @ 2100 Level

13amp. Socket @ 450 Level (Unless Specified)

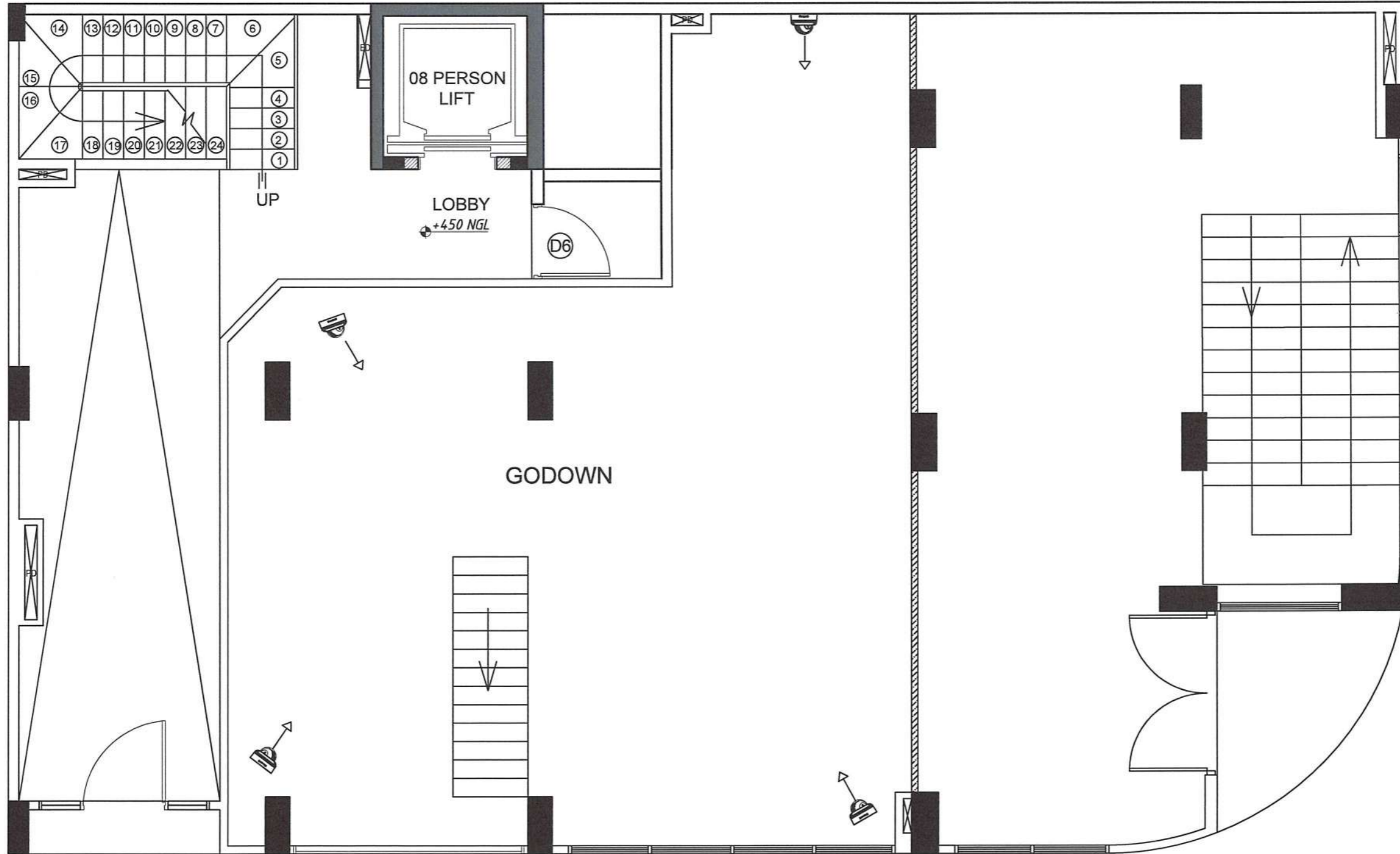
Phone & Internet Outlet @ 450 Level

Note: Refer A/C drawing for 15Amp socket location



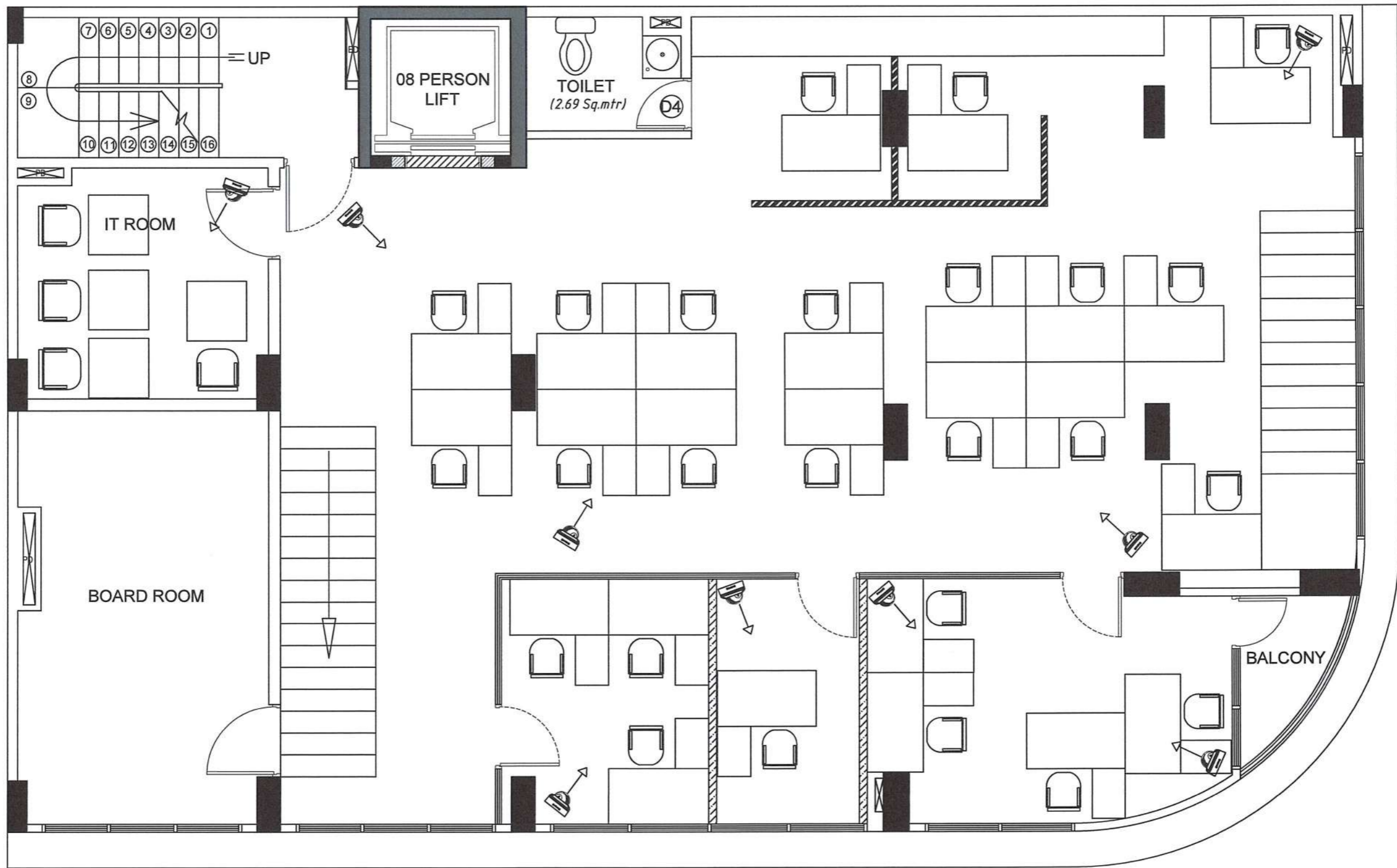
GROUND CAMERA LAYOUT

SCALE 1: 100



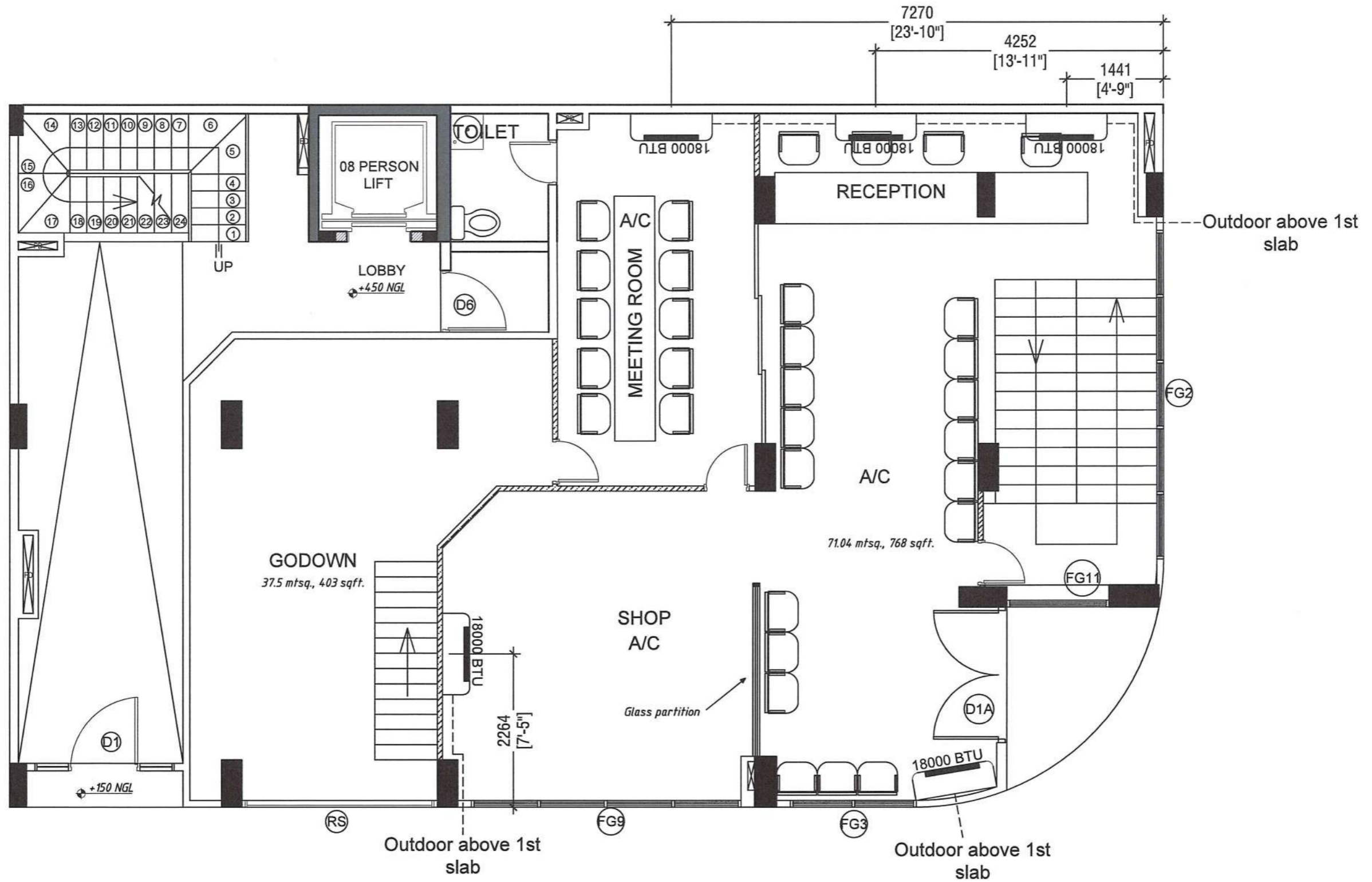
RAISED GROUND FLOOR CAMERA LAYOUT

SCALE 1: 100





FIRST FLOOR CAMERA LAYOUT

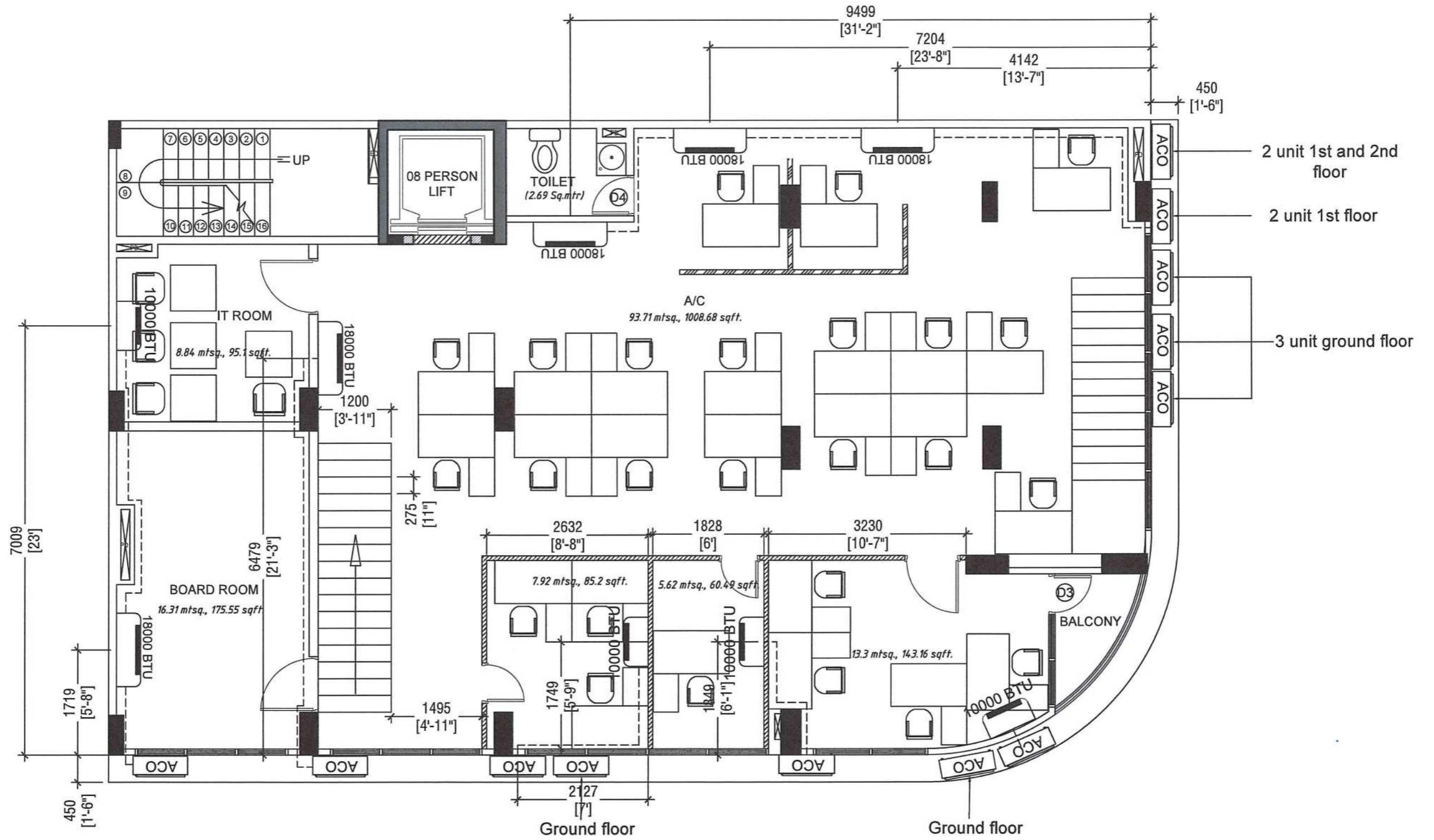
SCALE 1: 100



GROUND FLOOR A/C LAYOUT

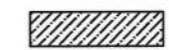

SCALE 1: 100

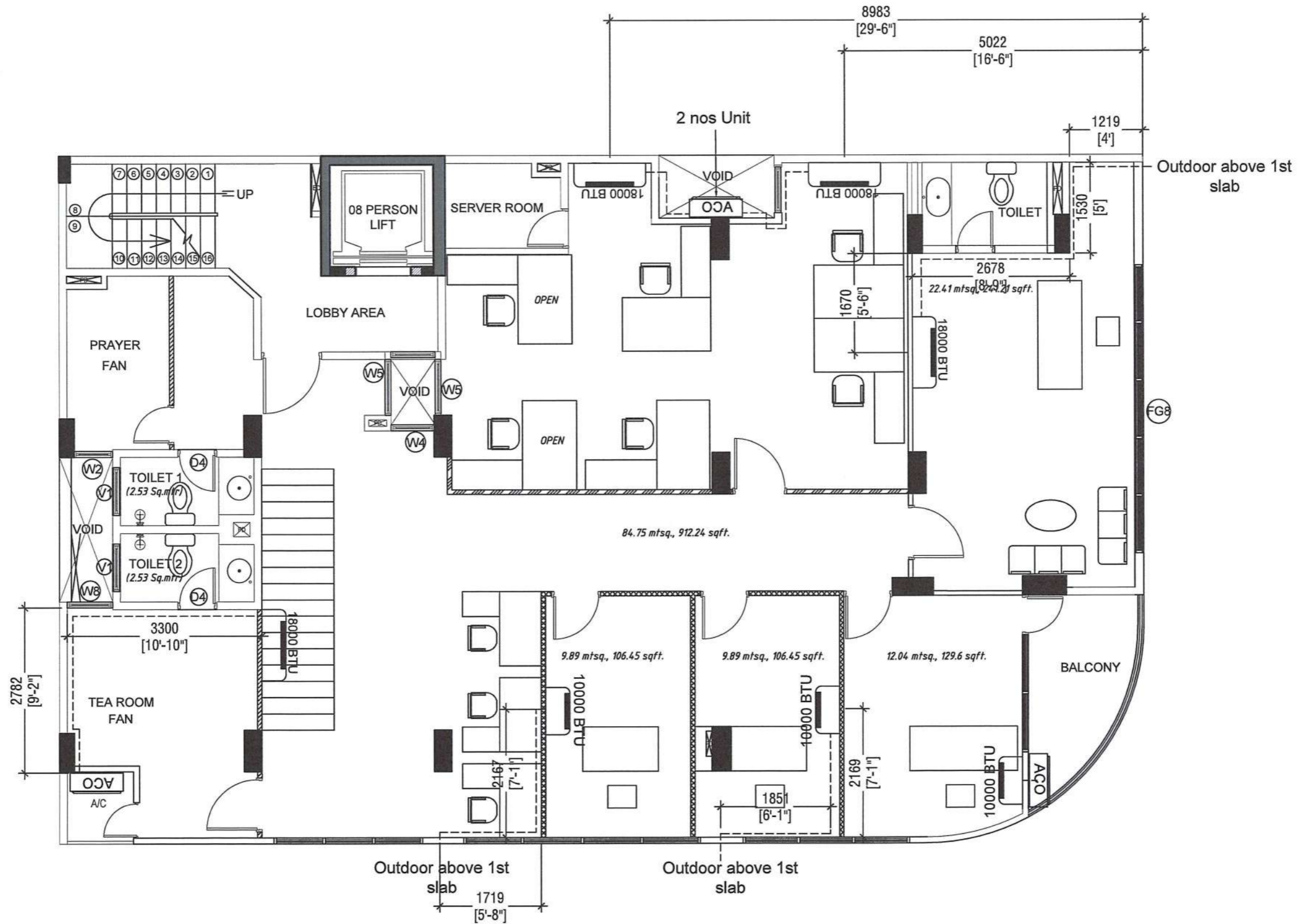
-  4" thk. Gypsum board partition with WPC door wall full height
-  Aluminum framed glass partition with glass door height 1200mm



FIRST FLOOR /C LAYOUT


SCALE 1: 100


-  4" thk. Gypsum board partition with WPC door wall full height
-  Aluminum framed glass partition with glass door height 1200mm



SECOND FLOOR A/C LAYOUT

SCALE 1: 100

 4" thk. Gypsum board partition with WPC door wall full height

 Aluminum framed glass partition with glass door height 1200mm