





<p>موضوع: گزارش کارآموزی دانشجویان                  تاریخ: 14 دسامبر 2024                  ساعت: 10:35</p>	
<p>موضوع: بررسی و تحلیل داده‌های 6 ساله (2018-2023)</p>	24.1
<p>موضوع: تحلیل آماری داده‌های 20000.00 (میانگین)</p>	28.1
<p>موضوع: تحلیل آماری داده‌های 30 (میانگین)</p>	28.2
<p>موضوع: تحلیل آماری داده‌های 2 (میانگین)</p>	30.1
<p>موضوع: گزارش کارآموزی دانشجویان</p>	36.1















- 21.1. 21. دسمبر ۲۰۲۴ء  
 ۲۱.۱. 21. دسمبر ۲۰۲۴ء  
 ۲۱.۲. 21. دسمبر ۲۰۲۴ء  
 22. 22. دسمبر ۲۰۲۴ء  
 22.1. 22. دسمبر ۲۰۲۴ء  
 22.1.1. 22.1.1. دسمبر ۲۰۲۴ء  
 22.1.2. 22.1.2. دسمبر ۲۰۲۴ء  
 22.1.3. 22.1.3. دسمبر ۲۰۲۴ء  
 23. 23. دسمبر ۲۰۲۴ء  
 23.1. 23.1. دسمبر ۲۰۲۴ء  
 24. 24. دسمبر ۲۰۲۴ء  
 24.1. 24.1. دسمبر ۲۰۲۴ء  
 25. 25. دسمبر ۲۰۲۴ء  
 25.1. 25.1. دسمبر ۲۰۲۴ء  
 26. 26. دسمبر ۲۰۲۴ء  
 26.1. 26.1. دسمبر ۲۰۲۴ء  
 27. 27. دسمبر ۲۰۲۴ء  
 27.1. 27.1. دسمبر ۲۰۲۴ء





قَوَسِ سَوَسْتَرِ سَوَسْتَرِ سَوَسْتَرِ 7 (سَوَسْتَرِ) قَوَسِ سَوَسْتَرِ سَوَسْتَرِ، دَوَسْتَرِ سَوَسْتَرِ،  
دَوَسْتَرِ سَوَسْتَرِ سَوَسْتَرِ سَوَسْتَرِ دَوَسْتَرِ سَوَسْتَرِ سَوَسْتَرِ، قَوَسِ سَوَسْتَرِ دَوَسْتَرِ سَوَسْتَرِ  
سَوَسْتَرِ سَوَسْتَرِ سَوَسْتَرِ 13-K/CIR/2018/01 ؤ قَوَسِ 19 دَوَسْتَرِ "سَوَسْتَرِ دَوَسْتَرِ  
دَوَسْتَرِ سَوَسْتَرِ سَوَسْتَرِ سَوَسْتَرِ سَوَسْتَرِ سَوَسْتَرِ " PR-14 قَوَسِ سَوَسْتَرِ سَوَسْتَرِ  
سَوَسْتَرِ سَوَسْتَرِ.

31.4. قَوَسِ سَوَسْتَرِ دَوَسْتَرِ سَوَسْتَرِ 17.09 دَوَسْتَرِ سَوَسْتَرِ سَوَسْتَرِ سَوَسْتَرِ سَوَسْتَرِ  
دَوَسْتَرِ سَوَسْتَرِ سَوَسْتَرِ سَوَسْتَرِ سَوَسْتَرِ سَوَسْتَرِ، قَوَسِ سَوَسْتَرِ سَوَسْتَرِ  
سَوَسْتَرِ سَوَسْتَرِ سَوَسْتَرِ سَوَسْتَرِ سَوَسْتَرِ سَوَسْتَرِ سَوَسْتَرِ سَوَسْتَرِ.

32. دَوَسْتَرِ سَوَسْتَرِ 32.1. قَوَسِ سَوَسْتَرِ دَوَسْتَرِ سَوَسْتَرِ 17.11 دَوَسْتَرِ سَوَسْتَرِ سَوَسْتَرِ سَوَسْتَرِ  
قَوَسِ دَوَسْتَرِ سَوَسْتَرِ سَوَسْتَرِ سَوَسْتَرِ سَوَسْتَرِ "دَوَسْتَرِ سَوَسْتَرِ سَوَسْتَرِ  
سَوَسْتَرِ سَوَسْتَرِ سَوَسْتَرِ، قَوَسِ سَوَسْتَرِ سَوَسْتَرِ سَوَسْتَرِ 13-K/CIR/2018/01  
ؤ قَوَسِ 21 دَوَسْتَرِ "سَوَسْتَرِ سَوَسْتَرِ سَوَسْتَرِ سَوَسْتَرِ سَوَسْتَرِ سَوَسْتَرِ  
دَوَسْتَرِ سَوَسْتَرِ سَوَسْتَرِ سَوَسْتَرِ سَوَسْتَرِ سَوَسْتَرِ سَوَسْتَرِ " - سَوَسْتَرِ  
دَوَسْتَرِ " PR-16 قَوَسِ سَوَسْتَرِ سَوَسْتَرِ.

قَوَسِ  
دَوَسْتَرِ  
سَوَسْتَرِ  
سَوَسْتَرِ















3 - جدول

دستور و ضوابط و ضوابط

1. دستور و ضوابط و ضوابط		
1.1	دستور	
1.2	مجلس سبک دہلی کے ضوابط و ضوابط	
1.3	مجلس سبک دہلی کے ضوابط	
1.4	مجلس سبک دہلی کے ضوابط	
1.5	مجلس سبک دہلی کے ضوابط و ضوابط	
1.6	مجلس سبک دہلی کے ضوابط	
1.7	مجلس سبک دہلی کے ضوابط	
1.8	مجلس سبک دہلی کے ضوابط	
2. دستور و ضوابط و ضوابط (مجلس سبک دہلی کے ضوابط و ضوابط، مجلس سبک دہلی کے ضوابط و ضوابط)		
#	دستور	ضوابط
	مجلس سبک دہلی کے ضوابط	
	مجلس سبک دہلی کے ضوابط	
	مجلس سبک دہلی کے ضوابط	
3. دستور و ضوابط و ضوابط		





### Form of Bid Security (Bank Guarantee)

WHEREAS, .....[name of Bidder] (hereinafter called “the Bidder”) has submitted his Bid for the Tender no.....issued by the Ministry of Education on .....for Supplying/Purchasing of .....[name of Contract] (hereinafter called “the Bid”).

KNOW ALL PEOPLE by these presents that We ..... [name of Bank] of ..... [name of country] having our registered office at ..... (hereinafter called “the Bank”) are bound unto .....[name of Purchaser] (hereinafter called “the Purchaser”) in the sum of \*..... for which payment well and truly to be made to the said Purchaser, the Bank binds itself, its successors, and assigns by these presents.

SEALED with the Common Seal of the said Bank this .....day of .....20.....

THE CONDITIONS of this obligation are:

- (1) If, after Bid opening, the Bidder withdraws his Bid during the period of Bid validity specified in the Form of Bid;
- or
- (2) If the Bidder having been notified of the acceptance of his Bid by the Purchaser during the period of Bid validity:
  - (a) fails or refuses to execute the Form of Agreement in accordance with the Instructions to Bidders, if required; or
  - (b) fails or refuses to furnish the Performance Security, in accordance with the Instruction to Bidders; or
  - (c) does not accept the correction of the Bid Price pursuant to Clause 27,

\* The Bidder should insert the amount of the Guarantee in words and figures denominated in Maldivian Rufiyaa. This figure should be the same as shown in Clause 16.1 of the Instructions to Bidders.

we undertake to pay to the Purchaser up to the above amount upon receipt of his first written demand, without the Purchaser’s having to substantiate his demand, provided that in his demand the Purchaser will note that the amount claimed by him is due to him owing to the occurrence of one or any of the three conditions, specifying the occurred condition or conditions.

This Guarantee will remain in force up to and including the date ..... days after the deadline for submission of bids as such deadline is stated in the Instructions to Bidders or as it may be extended by the Purchaser, notice of which extension(s) to the Bank is hereby waived. Any demand in respect of this Guarantee should reach the Bank not later than the above date.

DATE..... SIGNATURE OF THE BANK

WITNESS ..... SEAL

[signature, name, and address]

8 - ބޭނުންކުރާ ގޮތުގައި

ކަނޑުކަނޑުކުރާ ބޭނުންކުރާ ގޮތުގައި

# Form of Performance Bank Guarantee (Unconditional)

To: .....  
[name & address of Purchaser]  
.....  
.....

WHEREAS ..... [name and address of Supplier] (hereinafter called “the Supplier”) has undertaken, in pursuance of Contract No. .... dated ..... to execute ..... [name of Contract and brief description of Works] (hereinafter called “the Contract”);

AND WHEREAS it has been stipulated by you in the said Contract that the Supplier shall furnish you with a Bank Guarantee by a recognized bank for the sum specified therein as security for compliance with his obligations in accordance with the Contract;

AND WHEREAS we have agreed to give the Supplier such a Bank Guarantee;

NOW THEREFORE we hereby affirm that we are the Guarantor and responsible to you, on behalf of the Supplier, up to a total of \*..... [amount of Guarantee] ..... [amount in words], such sum being payable in the types and proportions of currencies in which the Contract Price is payable, and we undertake to pay you, upon your first written demand and without cavil or argument, any sum or sums within the limits of ..... [amount of Guarantee] as aforesaid without your needing to prove or to show grounds or reasons for your demand for the sum specified therein.

\*An amount is to be inserted by the Guarantor, representing the percentage of the Contract Price specified in the Contract, in Maldivian Rufiyaa.

We hereby waive the necessity of your demanding the said debt from the Supplier before presenting us with the demand.

We further agree that no change or addition to or other modification of the terms of the Contract or of the Works to be performed there under or of any of the Contract documents which may be made between you and the Supplier shall in any way release us from any liability under this Guarantee, and we hereby waive notice of any such change, addition, or modification.

This Guarantee shall be valid until the date of issue of the Defects Correction Certificate.

SIGNATURE AND SEAL OF THE GUARANTOR .....

Name of Bank .....

Address .....

.....

.....

Date .....



٩ - مرفوع

٥ - مرفوع

مرفوع	
مرفوع	مرفوع
مرفوع	33.1
مرفوع	33.2
مرفوع	33.3
مرفوع	33.4
مرفوع	37

Supply and Delivery of Recondition Excavator Ihavandhoo Council

To be specified by Vendor

Excavator/ Kobelco Brand: (preferred)	<b>KOBELCO SK75 (Vendor MUST specify)</b>	
Type:	EXCAVATOR	
Capacity	07or 09 Tons	
Country of Origin	Japan	
Color	Standard Color	
Runing Hours	10000 below	
Year of Manufacture	2021 or later	
Drive Type	Right Hand Drive (RHD)	
Crawler	Special crawler frame design	
Brake	Automatic swing brake	
Suspension	Air / Mechanical	
Cab Capacity	1person	
Air Conditioner	Installed	
Fuel Type	Diesel	
Engine type	Yamma/Cat/ ISUZU 4LE2XCUA	
Capacity	Net Power 55 hp (41 kw) No of cylinders 4	
Transmission	Manual Gear	
Type	Rigid metal body	
Material	Steel	
Control	Working mode selector (H-mode, S-mode)	
Standard	I.S.O (Others, please specify)	
Minimum 1 Year		
<ul style="list-style-type: none"> <li>• All the Specification Sheets must be presented with the Proposal.</li> <li>• All the standard safety features must be included.</li> </ul>		







	Year of Manufacture	2021 or later	
	Drive Type	Right Hand Drive (RHD)	
	Crawler	Special crawler frame design	
	Brake	Automatic swing brake	
	Suspension	Air / Mechanical	
<b>Cab</b>	Cab Capacity	1person	
	Air Conditioner	Installed	
<b>Engine</b>	Fuel Type	Diesel	
	Engine type	Yamma/Cat/ ISUZU 4LE2XCUA	
	Capacity	Net Power 55 hp (41 kw) No of cylinders 4	
<b>Gearbox</b>	Transmission	Manual Gear	
<b>Rear Body</b>	Type	Rigid metal body	
	Material	Steel	
	Control	Working mode selector (H-mode, S-mode)	
	Standard	I.S.O (Others, please specify)	
<b>Warranty</b>	Minimum 1 Year		
<ul style="list-style-type: none"> <li>• All the Specification Sheets must be presented with the Proposal.</li> <li>• All the standard safety features must be included.</li> </ul>			

**SK75**  
SK75-8

**STANDARD EQUIPMENT**

**ENGINE**

- Engine, ISUZU 4LEZKGA engine with turbocharger and intercooler
- Automatic engine deceleration
- Auto Idle Stop (AIS)
- Batteries (2 x12V - 64 Ah)
- Starting motor (24 V- 3.2 kW), 30 A alternator
- Double element air cleaner

**CONTROL**

- Working mode selector (H-mode, S-mode)

**SWING SYSTEM & TRAVEL SYSTEM**

- Swing rebound prevention system
- Two-speed travel with automatic shift down
- Sealed & lubricated track links
- Grease-type track adjusters
- Automatic swing brake

**MIRRORS & LIGHTS**

- Rear view mirrors
- Front working lights

**CAB & CONTROL**

- Left and right control lever, control handle
- Horn, electric
- Integrated operation panel
- Large cab
- Ashtray
- Cigarette lighter
- Cab light (interior)
- Coat hook
- Storage case
- Cup holder
- Detachable floor mat
- Seatbelt
- Headrest
- Handrails
- Defroster
- Wiper with two spray type washers
- Front window with pull-type upper half and detachable lower half
- Easy-to-read multi-display monitor
- Automatic air conditioner
- Emergency escape hammer
- Radio

Note: Standard and optional equipment may vary. Consult your KOBELCO dealer for specifics.

Note: This catalog may contain attachments and optional equipment that are not available in your area. And it may contain photographs of machines with specifications that differ from those of machines sold in your areas. Please consult your nearest KOBELCO distributor for those items you require. Due to our policy of continuous product improvements all designs and specifications are subject to change without advance notice. Copyright by KOBELCO CONSTRUCTION MACHINERY CO., LTD. No part of this catalog may be reproduced in any manner without notice.

**KOBELCO CONSTRUCTION MACHINERY CO., LTD.**  
17-1, Higashi-Gotanda 2-chome, Shinagawa-ku, Tokyo 141-8626 JAPAN  
Tel: +81 (0) 3-5789-2148 Fax: +81 (0) 3-5789-2135  
www.kobelco-kenki.co.jp/english\_index.html

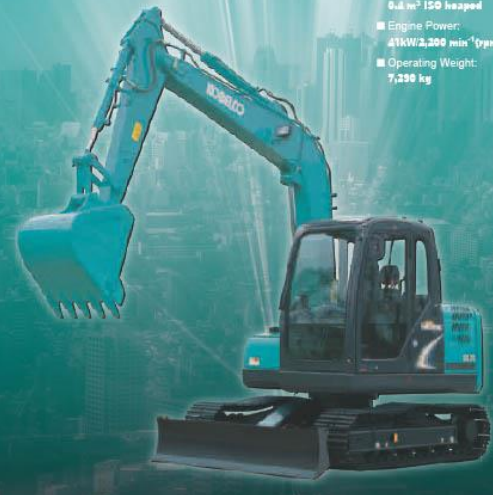
Inquiries To:

Bulletin No. ACERA GEOSPEC SUPER SK75-8-SEASIA-101  
2014K000000P Printed in Japan

ACERA GEOSPEC SK75-8

**KOBELCO**

**ACERA** Hydraulic Excavators  
**GEOSPEC**  
**SUPER** **SK75**



- Bucket Capacity: 0.4 m<sup>3</sup> ISO heaped
- Engine Power: 41kW/2,205 min<sup>-1</sup>(rpm)
- Operating Weight: 7,250 kg

**We Save You Fuel**  
Advancing a Low Carbon Society

# Powerful, Flexible, Large Bucket Capacity



The new ACERA GEOSPEC series utilizes the cutting edge technologies of KOBELCO, demonstrating the superior problem-solving capability of hydraulic excavators in today's construction industry. The smooth power maximizes operation capability, minimizes consumption and reaches a new stage for environmental protection.

Equipped with a newly designed power system, the ACERA GEOSPEC series completely prevents its failures of low oil consumption and high productivity. It will meet customers' latest demands while maintaining basic performance. Due to the adoption of cabs for large excavators, operators will not feel easily even when working for long periods. The sturdy body and reliable components make maintenance much easier. The debut of the SK75-8 model makes it the most reliable product in the ACERA GEOSPEC series for various customers.

**NEXT-3E**

Pursuing the "Three E's"  
The Perfection of Next-Generation,  
Network Performance

**Enhancement**

Greater Performance Capacity

- New hydraulic circuit load sensing system installed
- High-efficiency PFR-pump fuel injection engine
- Powerful travel and arm/bucket digging force

**Economy**

Improved Cost Efficiency

- Advanced power plant that reduces fuel consumption
- Easy maintenance that reduces upkeep costs
- High structural durability and reliability that retain machine value longer

**Environment**

Features That Go Easy on the Earth

- Auto Idle Stop as standard equipment

**GEOSPEC ACERA GEOSPEC**

The "GEOSPEC" in GEOSPEC expresses our deep respect for our planet, and for the 6000 ground where excavators will be used eternally. This is accompanied by SPEC, which refers to the performance specifications needed to get the job done efficiently as we carry on the tradition of the ground-friendly ACERA series.



# ACERA GEOSPEC SUPER

Capable and powerful GEOSPEC SUPER!

## Reduce unnecessary consumption with powerful operation power!

### "Top-Class" Powerful Digging

Max. arm crowding force: **39.4 kN (4.0tf)**  
 Max. bucket digging force: **52.7 kN (5.4tf)**

### Shorter Cycle Times

Swing Speed: **11.5min<sup>-1</sup>**

### Significant Extension of Continuous Working Hours

The combination of a large-capacity fuel tank and excellent fuel efficiency provides maximum extension for continuous operation hours. Fuel tank capacity: **140L**

### Light Lever Operation

Lighter levers mean less operator fatigue over long hours of operation.

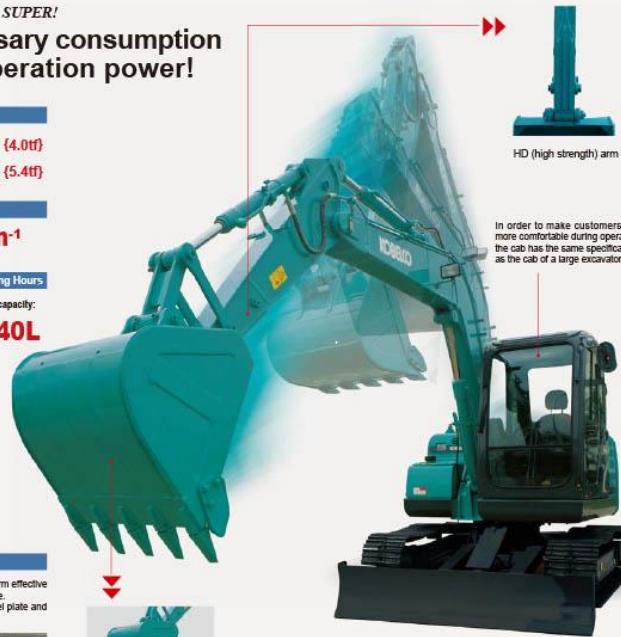


### Dozer blade (Optional)

The unique curve of the dozer blade helps to perform effective blade operation by turning up soil forward like a wave. The square-pipe-shaped arm is made of thick steel plate and boasts a high torsional rigidity.



**0.4m<sup>3</sup>**  
Large capacity bucket



In order to make customers feel more comfortable during operation, the cab has the same specifications as the cab of a large excavator.

Photos in this catalog are the optional specs with dozer blade.

## Performance

### Simple Select: Two Digging Modes



Mode select switch

**S-Mode:** For normal operations with lower fuel consumption.  
**H-Mode:** For heavy duty when a higher performance level is required.

### Technology 1 New Hydraulic System

The use of one pump and a load sensing system reduces hydraulic power loss. A new hydraulic system has been installed that keeps energy loss to the minimum through circuits that minimize pressure loss, an advanced high efficiency pump, and other features. The load sensing system is powerful and makes simultaneous operations easy, and KOBELCO's unique tuning makes starts smoother. Together they achieve a feel in the control levers that is most "natural", closest to what the operator expects.

### Technology 2 Highly reliable engine



The new engine is a PFR-pump fuel injection engine for high reliability. It is equipped with cooled EGR that lowers the temperature of the air intake to reduce its oxygen concentration. It achieves big reductions in particulate matter (PM) and NOx emissions while boosting output.

### Technology 3 Total Tuning Through Advanced ITCS Control

The next-generation engine control is governed by a new version of ITCS, which responds quickly to sudden changes in hydraulic load to ensure that the engine runs as efficiently as possible with a minimum of wasted output.

**ITCS** (Intelligent Total Control System) is an advanced, computerized system that provides comprehensive control of all machine functions.

# ACERA GEOSPEC SUPER

Easy to maintain GEOSPEC SUPER!

## Easy and convenient operation!

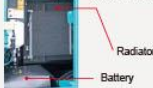
### Comfortable "On the Ground" Maintenance



All of the components that require regular maintenance are laid out for easy access. Newly designed, the bonnet opens widely and at a lower level.

### The battery and radiator are configured in the left case cover.

Easy to clean cooling unit



### Double-Element Air Cleaner as Standard



The large-capacity element features a double-filter structure that keeps the engine running clean even in dusty environments.

Air cleaner (double element)

### Highly-Durable Super-fine Filter



Super-fine filter

The high-capacity hydraulic oil filter incorporates glass fiber with superior cleaning power and durability. With a replacement cycle of 1,000 hours and a construction that allows replacement of the filter elements only, it's both highly effective and highly economical.

Space is reserved for tools and grease etc., which are necessary for daily maintenance and repair.



The engine is located at the center of the portion for easy inspection and repair.



Air cleaner  
 Engine oil filter  
 Radiator reservoir tank

### More Efficient Maintenance Inside the Cab

Chair Dimensions



Checkmate floor mat with handles for easy removal. A floor drain is located under the mat.  
 Easy-access base box. More finely differentiated flange make it easier to locate malfunctions.  
 Air conditioner filter can be easily removed without tools for cleaning.  
 Hour meter can be checked while standing on the ground.  
 Special crawler frame design is easily cleaned of mud.

### Monitor Display with Essential Information for Accurate Maintenance Checks



Display only the maintenance information that's needed, when it's needed.  
 Self-diagnostic function that provides early-warning detection and display of electrical system malfunctions.  
 Record function of previous breakdowns including irregular and transient malfunctions.

### The main control valve is located in the right case cover for easy inspection and repair.



Fuel filter  
 Pre fuel filter (with built-in water separator)  
 Hydraulic control valve



# GEOSPEC SUPER

Clean and comfortable GEOSPEC SUPER!  
**Equipped with the same cab as a large excavator!**

**Wide Field of View Liberates the Operator**  
 The front field of view easily clears ISO standards, while the peripheral view reduces blind spots to a minimum.



- A long wiper covers a wide area for a broad view in bad weather.
- Back mirrors provide a safe view of the rear.
- Reinforced green glass windows meet European standards.

**Wide-Access Cab Ensures Smooth Entry/Exit**  
 The cab entry angle for easy entrance and exit.



**Reduced Vibration for Fatigue-Free Operation**  
 The rigid cab construction and liquid-filled viscous cab mounts minimize cab vibration. In addition, the use of new lower rollers on the crawlers cuts travel vibration in half compared with previous models.



**Reduced Vibration for Fatigue-Free Operation**



• New reclining seat can be lowered well down to the back.



• Large cup holder

## Comfort and Safety

Delicate and complete GEOSPEC!  
**Take various scenarios into consideration to prevent any potential danger!**

**Safety Features That Take Various Scenarios into Consideration**



• Firewall separates the pump compartment from the engine



• Hammer for emergency exit

**Newly Designed Information Display Prioritizes Visual Recognition**



The analog gauge provides information that's easy to read regardless of the operating environment. The information display screen has been enlarged, and a visor is attached to further enhance visibility.



## Specifications

SK75  
SK75-2

### Engine

Model	ISUZU A6E300QA
Type	Direct Injection, water-cooled, 4-cycle diesel engine with turbocharger, Intercooler (Complies with EU (DIRM) Stage IIIA, US Tier III, and act on regulation, etc. of emissions from non-road special motor vehicles (Japan))
No. of cylinders	4
Bore and stroke	85 mm x 96 mm
Displacement	2,179 L
Rated power output	42 kW (2,200 min <sup>-1</sup> ) (ISO14396:2002) 41 kW (2,200 min <sup>-1</sup> ) (ISO14396:2002)
Max. torque	211 N.m/1,600 min <sup>-1</sup> (perm) (ISO14396:2002) 200 N.m/1,600 min <sup>-1</sup> (perm) (ISO14396:2002)

\*100 kW (136 hp) EU reg. rate

### Travel System

Travel motors	2 x axial-piston, two-step motors
Travel brakes	Hydraulic brake per motor
Parking brakes	Oil disc brake per motor
Travel shoes	39 each side
Travel speed	5.3 / 2.8 km/h
Gradeability	70 % (35°)

### Cab & Control

Cab	All-weather, sound-suppressed steel cab mounted on the silicon-sealed viscous mounts and equipped with a heavy, insulated floor mat.
Control	Two hand levers and two foot pedals for travel Two hand levers for excavating and swing Electric rotary-type engine throttle

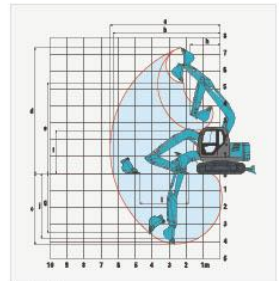
### Refilling Capacities & Lubrications

Fuel tank	140 L
Cooling system	8.5 L
Engine oil	11 L
Travel reduction gear	2 x 5.3 L
Swing reduction gear	1.5 L
Hydraulic oil tank	67 L 107 L

### Working Ranges

Range	Arm	Standard	Unit:m
a- Max. digging reach at ground level		6.46	
b- Max. digging depth at ground level		6.31	
c- Max. digging height		4.17	
e- Max. dumping height		7.4	
f- Min. dumping clearance		6.33	
f- Min. dumping clearance		2.52	
g- Max. vertical wall digging depth		3.48	
h- Min. swing radius		1.78	
i- Horizontal digging stroke at ground level		2.85	
j- Digging depth for 2.4 m (8') flat bottom		3.81	
Bucket capacity ISO 6049		0.4	m <sup>3</sup>

Digging Force (ISO 6049)	Unit: kN (kgf)
Arm length	Standard 1.71 m
Bucket digging force	62.7 (6,370)
Arm crawling force	39.4 (4,000)



### Dimensions

Dimensions	Standard	Unit: mm
A Overall length	6,200	
B Overall height (to top of boom)	2,450	
C Overall width of crawler	2,320	
D Overall height (to top of ear)	2,750	
E Ground clearance of ear end	746	
F Ground clearance	380	

Dimensions	Unit: mm
G Tail swing radius	1,700
H Tumbler distance	2,210
I Overall length of crawler	2,820
J Track gauge	1,670
K Shoe width	450
L Overall width of upperstructure	2,110
M Dozer blade (up/down)	475 (287) / 505

\* Without including height of shoe lip  
 \*\* For dozer

### Swing System

Swing motor	Axial piston motor
Brake	Hydraulic; locking automatically when the swing control lever is in the neutral position
Parking brake	Oil disc brake, hydraulic operated automatically
Swing speed	11.5 min <sup>-1</sup> (11.5 rpm)
Tail swing radius	1,750 mm
Min. front swing radius	1,760 mm

### Attachments

Use	Backhoe bucket Standard
Bucket capacity ISO heaped m <sup>3</sup>	0.4
With side cutters mm	970
Without side cutters mm	870
No. of bucket teeth	5
Bucket weight kg	230
Combination	1.71 m standard arm



### Operating Weight & Ground Pressure

In standard trim, with standard boom, 1.71 m arm, 0.4 m ISO heaped bucket, and dozer	Triple ground pressure (level height)	
	mm	kg
Shoe width	450	
Overall width	2,320	
Ground pressure	33.7 (0.31)	
Operating weight		1,290