

بِسْمِ اللَّهِ الرَّحْمَنِ الرَّحِيمِ



الجمهورية الجزائرية الديمقراطية الشعبية

الوزارة الوطنية للتعليم، العلوم والتكنولوجيا
البلدية
الولاية

الولاية رقم: 248/2024/10

الولاية رقم: (IUL)248-PRU/248/2024/38

28 جمادى الآخرة 2024

الولاية رقم: 248/2024/10
الولاية رقم: (IUL)248-PRU/248/2024/38

1 වැනි කොටස

පුවත් සටහන

පුවත් නිවාඩු වැනි වාර්තාව		පුවත් නිවාඩු
<p>1.1.1 වාර්තාවක් ලෙසින් වාර්තා කළ පුවත් සටහන</p>	<p>ඊරිමි 2024/10/248</p>	<p>1.1</p>
<p>(IUL)248-PRU/248/2024/38</p>	<p>ඊරිමි 2024/10/248</p>	<p>ඊරිමි 2024</p>
<p>පුවත් සටහනක් ලෙසින් පුවත් සටහනක් ලෙසින් පුවත් සටහනක් ලෙසින්</p>		<p>8.1</p>
<p>procurement@ihavandhoo.gov.mv</p>		<p>2024 ඊරිමි 28 සිට 2024 ඊරිමි 18 දක්වා</p>
<p>14:00 සිට 18:00 දක්වා</p>		<p>9.1</p>
<p>පුවත් සටහනක් ලෙසින් පුවත් සටහනක් ලෙසින් පුවත් සටහනක් ලෙසින්</p>		<p>9.2</p>
<p>6500285</p>		<p>13.1</p>
<p>procurement@ihavandhoo.gov.mv</p>		<p>14</p>
<p>ඊරිමි 2024 ඊරිමි 25 දක්වා</p>		<p>18.1</p>
<p>11:00</p>		<p>20.1</p>

<p>موضوع: قرارداد اجاره ملک در شهر تهران تاریخ: 25 دسامبر 2024 ساعت: 11:05</p>	
<p>مبلغ قرارداد: 6 میلیارد تومان.</p>	24.1
<p>مبلغ پیش‌پرداخت: 20000.00 (دو بیست هزار تومان)</p>	28.1
<p>مدت قرارداد: 30 (سی ماه)</p>	28.2
<p>تاریخ انعقاد قرارداد: 2 دسامبر</p>	30.1
<p>محل قرارداد: تهران، خیابان ولیعصر</p>	36.1

سۆز ۋە ھۆججەت 2 - سۆز ئىشلىتىش قانۇنىدا ئۆزگەرتىش ۋە قىسقارتىش

(1) ئۆزگەرتىش ۋە قىسقارتىش

1.1 سۆز ئۆزگەرتىش ۋە قىسقارتىش تۈزۈمىگە ئۆزگەرتىش ۋە قىسقارتىش قىلىشقا توغرا كېلىدىغان بولسا، ئۆزگەرتىش ۋە قىسقارتىش قىلىشقا تونۇش قويۇش كېرەك. سۆز ئۆزگەرتىش ۋە قىسقارتىش قىلىشقا تونۇش قويۇش قىلىشقا تونۇش قويۇش كېرەك.

2. سۆز ئۆزگەرتىش ۋە قىسقارتىش تۈزۈمىگە ئۆزگەرتىش ۋە قىسقارتىش قىلىشقا تونۇش قويۇش كېرەك. (ئۆزگەرتىش تۈزۈمى: 18/2014) ۋە تۈزۈم ۋە تۈزۈم ئۆزگەرتىش تۈزۈمىگە ئۆزگەرتىش ۋە قىسقارتىش قىلىشقا تونۇش قويۇش كېرەك.

2.1.1 تۈزۈم ئۆزگەرتىش ۋە قىسقارتىش تۈزۈمىگە ئۆزگەرتىش ۋە قىسقارتىش قىلىشقا تونۇش قويۇش كېرەك.

2.1.2 تۈزۈم ئۆزگەرتىش ۋە قىسقارتىش تۈزۈمىگە ئۆزگەرتىش ۋە قىسقارتىش قىلىشقا تونۇش قويۇش كېرەك.

2.1.3 تۈزۈم ئۆزگەرتىش ۋە قىسقارتىش تۈزۈمىگە ئۆزگەرتىش ۋە قىسقارتىش قىلىشقا تونۇش قويۇش كېرەك.

2.1.4 تۈزۈم ئۆزگەرتىش ۋە قىسقارتىش تۈزۈمىگە ئۆزگەرتىش ۋە قىسقارتىش قىلىشقا تونۇش قويۇش كېرەك.

2.2 تۈزۈم ئۆزگەرتىش ۋە قىسقارتىش تۈزۈمىگە ئۆزگەرتىش ۋە قىسقارتىش قىلىشقا تونۇش قويۇش كېرەك. تۈزۈم ئۆزگەرتىش ۋە قىسقارتىش تۈزۈمىگە ئۆزگەرتىش ۋە قىسقارتىش قىلىشقا تونۇش قويۇش كېرەك.

2.3 تۈزۈم ئۆزگەرتىش ۋە قىسقارتىش تۈزۈمىگە ئۆزگەرتىش ۋە قىسقارتىش قىلىشقا تونۇش قويۇش كېرەك. تۈزۈم ئۆزگەرتىش ۋە قىسقارتىش تۈزۈمىگە ئۆزگەرتىش ۋە قىسقارتىش قىلىشقا تونۇش قويۇش كېرەك.

3. سۆز ئۆزگەرتىش ۋە قىسقارتىش تۈزۈمىگە ئۆزگەرتىش ۋە قىسقارتىش قىلىشقا تونۇش قويۇش كېرەك. 1 تۈزۈم، سۆز ئۆزگەرتىش ۋە قىسقارتىش تۈزۈمىگە ئۆزگەرتىش ۋە قىسقارتىش قىلىشقا تونۇش قويۇش كېرەك.

3.2 سۆز ئۆزگەرتىش ۋە قىسقارتىش تۈزۈمىگە ئۆزگەرتىش ۋە قىسقارتىش قىلىشقا تونۇش قويۇش كېرەك. (ئۆزگەرتىش تۈزۈمى: 18/2014) ۋە تۈزۈم ۋە تۈزۈم ئۆزگەرتىش تۈزۈمىگە ئۆزگەرتىش ۋە قىسقارتىش قىلىشقا تونۇش قويۇش كېرەك.

7.1.2 מוסד רשמי יחיד או מספר מוסדות רשמיים (מספר מוסדות-2)

7.1.3 ארגון המעסיק או ארגון אחר רשמי (מספר מוסדות-3)

7.1.4 עיתון או כתב עת (מספר מוסדות-4)

7.1.5 מוסד המעסיק או מוסד אחר (מספר מוסדות - 5)

7.1.6 ארגון המעסיק (מספר מוסדות - 6)

7.1.7 דו-סוגי או דו-צדדי (מספר מוסדות-7)

8.1 מוסדות אחרים, כולל מוסדות המעסיק או המעסיק, או מוסדות אחרים, כולל מוסדות המעסיק או המעסיק, או מוסדות אחרים, כולל מוסדות המעסיק או המעסיק. **8. מוסדות אחרים**

8.2 מוסדות רשמיים או מוסדות אחרים, כולל מוסדות המעסיק או המעסיק, או מוסדות אחרים, כולל מוסדות המעסיק או המעסיק. **8.2 מוסדות רשמיים**

8.3 מוסדות אחרים, כולל מוסדות המעסיק או המעסיק, או מוסדות אחרים, כולל מוסדות המעסיק או המעסיק, או מוסדות אחרים, כולל מוסדות המעסיק או המעסיק. **8.3 מוסדות אחרים**

9.1 מוסדות אחרים, כולל מוסדות המעסיק או המעסיק, או מוסדות אחרים, כולל מוסדות המעסיק או המעסיק, או מוסדות אחרים, כולל מוסדות המעסיק או המעסיק. **9. מוסדות אחרים**

9.2 מוסדות אחרים, כולל מוסדות המעסיק או המעסיק, או מוסדות אחרים, כולל מוסדות המעסיק או המעסיק, או מוסדות אחרים, כולל מוסדות המעסיק או המעסיק. **9.2 מוסדות אחרים**

9.3 מוסדות אחרים, כולל מוסדות המעסיק או המעסיק, או מוסדות אחרים, כולל מוסדות המעסיק או המעסיק, או מוסדות אחרים, כולל מוסדות המעסיק או המעסיק. **9.3 מוסדות אחרים**

10.1 מוסדות אחרים, כולל מוסדות המעסיק או המעסיק, או מוסדות אחרים, כולל מוסדות המעסיק או המעסיק, או מוסדות אחרים, כולל מוסדות המעסיק או המעסיק. **10. מוסדות אחרים**

10.2 מוסדות אחרים, כולל מוסדות המעסיק או המעסיק, או מוסדות אחרים, כולל מוסדות המעסיק או המעסיק, או מוסדות אחרים, כולל מוסדות המעסיק או המעסיק. **10.2 מוסדות אחרים**

(ס) מוסדות אחרים

שלוש עשרה - 3

הנהגות פשוטות המביאות להפחית את רמת האמון

- 33.1. "דבר האמון הוא תמיד ארוך" נאמר בלשון ארוכה, מרוב האנשים הנכבדים והרשומים לאיסורו ורמתו גבוהה.
- 33.2. "דבר האמון רחוק ומרומם" נאמר בלשון ארוכה, ודבר האמון נחשב כמשהו רחוק ומרומם.
- 33.3. "דבר האמון" נאמר בלשון ארוכה, מרוב האנשים הנכבדים והרשומים ונחשב כשום דבר רחוק ומרומם.
- 33.4. "דבר האמון רחוק" נאמר בלשון ארוכה, מרוב האנשים הנכבדים והרשומים ומרוב האנשים הרחוקים והמרוחקים.
- 33.5. "הנהגות פשוטות" נאמר בלשון ארוכה, דבר האמון הוא תמיד ארוך ומרומם, דבר האמון רחוק ומרומם, רחוק ומרומם, רחוק ומרומם, רחוק ומרומם.
- 34.1. דבר האמון רחוק ומרומם, מרוב האנשים הנכבדים והרשומים, מרוב האנשים הרחוקים והמרוחקים, מרוב האנשים הרחוקים והמרוחקים, מרוב האנשים הרחוקים והמרוחקים, מרוב האנשים הרחוקים והמרוחקים.
- 34.2. מרוב האנשים הרחוקים והמרוחקים, מרוב האנשים הרחוקים והמרוחקים, מרוב האנשים הרחוקים והמרוחקים, מרוב האנשים הרחוקים והמרוחקים, מרוב האנשים הרחוקים והמרוחקים, מרוב האנשים הרחוקים והמרוחקים.
- 34.3. דבר האמון רחוק ומרומם, מרוב האנשים הנכבדים והרשומים, מרוב האנשים הרחוקים והמרוחקים, מרוב האנשים הרחוקים והמרוחקים, מרוב האנשים הרחוקים והמרוחקים, מרוב האנשים הרחוקים והמרוחקים.
- 35.1. דבר האמון רחוק ומרומם, מרוב האנשים הנכבדים והרשומים, מרוב האנשים הרחוקים והמרוחקים, מרוב האנשים הרחוקים והמרוחקים, מרוב האנשים הרחוקים והמרוחקים, מרוב האנשים הרחוקים והמרוחקים.
- 35.2. 35.1. דבר האמון רחוק ומרומם, מרוב האנשים הנכבדים והרשומים, מרוב האנשים הרחוקים והמרוחקים, מרוב האנשים הרחוקים והמרוחקים, מרוב האנשים הרחוקים והמרוחקים, מרוב האנשים הרחוקים והמרוחקים.
- 36.1. מרוב האנשים הרחוקים והמרוחקים, מרוב האנשים הרחוקים והמרוחקים, מרוב האנשים הרחוקים והמרוחקים, מרוב האנשים הרחוקים והמרוחקים, מרוב האנשים הרחוקים והמרוחקים, מרוב האנשים הרחוקים והמרוחקים.
- 36.2. מרוב האנשים הרחוקים והמרוחקים, מרוב האנשים הרחוקים והמרוחקים, מרוב האנשים הרחוקים והמרוחקים, מרוב האנשים הרחוקים והמרוחקים, מרוב האנשים הרחוקים והמרוחקים, מרוב האנשים הרחוקים והמרוחקים.

6 د ژوند نامزدونه د سولناکوونکي، د قلمکونکي د سيمې څه پورې تړلي دي، انانور
کونړو ولسوالۍ د سولناکوونکي

7 سولناکوونکي د سولناکوونکي سولناکوونکي د سولناکوونکي انانور

8 سولناکوونکي د سولناکوونکي، د سولناکوونکي، د سولناکوونکي انانور،

سولناکوونکي د سولناکوونکي، د سولناکوونکي، د سولناکوونکي انانور

سولناکوونکي د سولناکوونکي، د سولناکوونکي انانور

سنة 4 -

سنة 1 -

سنة 1 -

سنة 1 -

#	تاريخ النشر
سنة 1 -	
1	سنة 2 (سنة 2)
2	سنة 3 (سنة 3)
3	سنة 4 (سنة 4)
4	سنة 5 (سنة 5)
5	سنة 6 (سنة 6)
6	سنة 7 (سنة 7)
7	سنة 8 (سنة 8)
8	سنة 9 (سنة 9)
9	سنة 10 (سنة 10)
سنة 10 -	
10	سنة 11 (سنة 11)
11	سنة 12 (سنة 12)
12	سنة 13 (سنة 13)
13	سنة 14 (سنة 14)
سنة 14 -	
14	سنة 15 (سنة 15)
15	سنة 16 (سنة 16)
16	سنة 17 (سنة 17)
17	سنة 18 (سنة 18)
18	سنة 19 (سنة 19)
19	سنة 20 (سنة 20)

3 - جدول المحتويات

محتويات التقرير السنوي

1. محتويات التقرير السنوي		
1.1	مقدمة	
1.2	معرض الصور من المعرض الوطني للفنون	
1.3	معرض الصور من المعرض الوطني للفنون	
1.4	معرض الصور من المعرض الوطني للفنون	
1.5	معرض الصور من المعرض الوطني للفنون	
1.6	معرض الصور من المعرض الوطني للفنون	
1.7	معرض الصور من المعرض الوطني للفنون	
1.8	معرض الصور من المعرض الوطني للفنون	
2. محتويات التقرير السنوي (المعرض الوطني للفنون، المعرض الوطني للفنون، المعرض الوطني للفنون)		
#	معرض	رقم
	معرض الصور من المعرض الوطني للفنون	
	معرض الصور من المعرض الوطني للفنون	
	معرض الصور من المعرض الوطني للفنون	
3. محتويات التقرير السنوي		

4 - جدول

جدول الموازنات العامة للعام ٢٠٢٤

الموازنة العامة للدولة للعام ٢٠٢٤			
#	الموازنة العامة للدولة	الموازنة العامة للدولة	الموازنة العامة للدولة
	الموازنة العامة للدولة		
الموازنة العامة للدولة للعام ٢٠٢٤			
#	الموازنة العامة للدولة	الموازنة العامة للدولة	الموازنة العامة للدولة
	الموازنة العامة للدولة		

مبلغ: ٢٠ مليار جنيه إجمالي الميزانية العامة للدولة للعام ٢٠٢٤. الميزانية العامة للدولة للعام ٢٠٢٤ تبلغ ١٠٠ مليار جنيه.

5 - حُجُوجِ

قَوْمِ 36 (بَحْرِ رَاكِبِ) دَ بَحْرِ قَوْمِ رَاكِبِ دَ بَحْرِ رَاكِبِ (قَوْمِ رَاكِبِ) دَ بَحْرِ رَاكِبِ

قَوْمِ رَاكِبِ قَوْمِ رَاكِبِ قَوْمِ رَاكِبِ قَوْمِ رَاكِبِ			
#	دَ بَحْرِ رَاكِبِ	دَ بَحْرِ رَاكِبِ قَوْمِ رَاكِبِ	دَ بَحْرِ رَاكِبِ رَاكِبِ
	حُجُوجِ		

سَوِيَرِ: بَحْرِ رَاكِبِ رَاكِبِ رَاكِبِ 20 بَحْرِ رَاكِبِ رَاكِبِ رَاكِبِ.

6 - حُجُوجِ

قَوْمِ رَاكِبِ رَاكِبِ رَاكِبِ رَاكِبِ رَاكِبِ رَاكِبِ

قَوْمِ رَاكِبِ	قَوْمِ رَاكِبِ قَوْمِ رَاكِبِ	قَوْمِ رَاكِبِ قَوْمِ رَاكِبِ
70	دَ بَحْرِ رَاكِبِ رَاكِبِ رَاكِبِ / دَ بَحْرِ رَاكِبِ رَاكِبِ $70 \times$	رَاكِبِ
5	دَ بَحْرِ رَاكِبِ قَوْمِ رَاكِبِ / دَ بَحْرِ رَاكِبِ رَاكِبِ $5 \times$	قَوْمِ رَاكِبِ
5	دَ بَحْرِ رَاكِبِ رَاكِبِ رَاكِبِ / دَ بَحْرِ رَاكِبِ رَاكِبِ $5 \times$	دَ بَحْرِ رَاكِبِ
10	دَ بَحْرِ رَاكِبِ رَاكِبِ رَاكِبِ رَاكِبِ رَاكِبِ رَاكِبِ 20 بَحْرِ رَاكِبِ رَاكِبِ رَاكِبِ 2 قَوْمِ رَاكِبِ	قَوْمِ رَاكِبِ
10	دَ بَحْرِ رَاكِبِ رَاكِبِ رَاكِبِ / دَ بَحْرِ رَاكِبِ رَاكِبِ $10 \times$	قَوْمِ رَاكِبِ
100	حُجُوجِ	

Form of Bid Security (Bank Guarantee)

WHEREAS,[name of Bidder] (hereinafter called “the Bidder”) has submitted his Bid for the Tender no.....issued by the Ministry of Education onfor Supplying/Purchasing of[name of Contract] (hereinafter called “the Bid”).

KNOW ALL PEOPLE by these presents that We [name of Bank] of [name of country] having our registered office at (hereinafter called “the Bank”) are bound unto[name of Purchaser] (hereinafter called “the Purchaser”) in the sum of *..... for which payment well and truly to be made to the said Purchaser, the Bank binds itself, its successors, and assigns by these presents.

SEALED with the Common Seal of the said Bank thisday of20.....

THE CONDITIONS of this obligation are:

- (1) If, after Bid opening, the Bidder withdraws his Bid during the period of Bid validity specified in the Form of Bid;
- or
- (2) If the Bidder having been notified of the acceptance of his Bid by the Purchaser during the period of Bid validity:
 - (a) fails or refuses to execute the Form of Agreement in accordance with the Instructions to Bidders, if required; or
 - (b) fails or refuses to furnish the Performance Security, in accordance with the Instruction to Bidders; or
 - (c) does not accept the correction of the Bid Price pursuant to Clause 27,

* The Bidder should insert the amount of the Guarantee in words and figures denominated in Maldivian Rufiyaa. This figure should be the same as shown in Clause 16.1 of the Instructions to Bidders.

we undertake to pay to the Purchaser up to the above amount upon receipt of his first written demand, without the Purchaser’s having to substantiate his demand, provided that in his demand the Purchaser will note that the amount claimed by him is due to him owing to the occurrence of one or any of the three conditions, specifying the occurred condition or conditions.

This Guarantee will remain in force up to and including the date days after the deadline for submission of bids as such deadline is stated in the Instructions to Bidders or as it may be extended by the Purchaser, notice of which extension(s) to the Bank is hereby waived. Any demand in respect of this Guarantee should reach the Bank not later than the above date.

DATE..... SIGNATURE OF THE BANK

WITNESS SEAL

[signature, name, and address]

8 - ބޭނުންކުރާ ބޭނުން

ފޯމް ޖެނެރަލް ޕަރފޯމަންސް ބޭނުންކުރާ ބޭނުން

Form of Performance Bank Guarantee (Unconditional)

To:
[name & address of Purchaser]
.....
.....

WHEREAS [name and address of Supplier] (hereinafter called “the Supplier”) has undertaken, in pursuance of Contract No. dated to execute [name of Contract and brief description of Works] (hereinafter called “the Contract”);

AND WHEREAS it has been stipulated by you in the said Contract that the Supplier shall furnish you with a Bank Guarantee by a recognized bank for the sum specified therein as security for compliance with his obligations in accordance with the Contract;

AND WHEREAS we have agreed to give the Supplier such a Bank Guarantee;

NOW THEREFORE we hereby affirm that we are the Guarantor and responsible to you, on behalf of the Supplier, up to a total of *..... [amount of Guarantee] [amount in words], such sum being payable in the types and proportions of currencies in which the Contract Price is payable, and we undertake to pay you, upon your first written demand and without cavil or argument, any sum or sums within the limits of [amount of Guarantee] as aforesaid without your needing to prove or to show grounds or reasons for your demand for the sum specified therein.

*An amount is to be inserted by the Guarantor, representing the percentage of the Contract Price specified in the Contract, in Maldivian Rufiyaa.

We hereby waive the necessity of your demanding the said debt from the Supplier before presenting us with the demand.

We further agree that no change or addition to or other modification of the terms of the Contract or of the Works to be performed there under or of any of the Contract documents which may be made between you and the Supplier shall in any way release us from any liability under this Guarantee, and we hereby waive notice of any such change, addition, or modification.

This Guarantee shall be valid until the date of issue of the Defects Correction Certificate.

SIGNATURE AND SEAL OF THE GUARANTOR

Name of Bank

Address

.....

.....

Date

9 - مذكرات

5 - مذكرات

مذكرات	
مذكرات	مذكرات
مذكرات	33.1
مذكرات	33.2
مذكرات	33.3
مذكرات	33.4
مذكرات	37

بیماروں - 10

سیدھے سیدھے

Supply and Delivery of recondition (KOBELCO R-200 Crane)Ihavandhoo Council			To be specified by Vendor
General	/ Brand: (preferred)	KOBELCO R-200 (Vendor MUST specify)	
	Type:	4-wheel drive (4WD), with 2-wheel drive (2WD) select for high speed mode.	
	Capacity	20 metric tonx2.5m	
	Country of Origin	Japan	
	PASSENGER:	1 person	
	GRADEABILITY	θ 0.6 (31°)	
	Running Hours	Below 700	
	MAX. TRAVEL SPPED:	49 km/h	
	HOOK BLOCK	4-sheave, Optional 20 metric ton block (or standard 16 metric ton block) with safety latch for main hoist, 2.9 metric ton hook with swivel and safety latch for aux. hoist.	
	TIRES	Front/Rear: 325/95 R24 161E ROAD	
	FUEL TANK Capacity	250 liters	
	OUTRIGGERS	Hydraulic H-type outriggers.	
	Year of Manufacture	2022 or later	
SAFETY DEVICES (Standard)	Moment limiter (auto-stop)	Swing lock device	
	Swing range limit device	Working range limit device	
	Boom telescope safety device	Overhoist prevention device (auto-stop)	
	Base machine inclination meter	Interceptive lever lock for on and off	
	Outrigger extension width automatic detecting device	Auxiliary brake for operating	
	Boom hoist safety device	Safety lock lever	
	Hydraulic safety valve	Sling wire lock	
	Boom telescoping default operation prevension device	Winch drum safety device Outrigger safety device	
	Swing flasher lamps	Anti-slip seat	
	Emergency steering device	Rear steering auto-lock	
Suspension lock device	Engine overrun warning buzzer		
Fully retracted length	6.7m		

Boom	Fully extended length	25.0m	
	Boom raising angle:	9 to 80°	
	Boom raising time:	39 sec	
	Boom telescoping time:	60 sec / 18.3 m	
JIB	Jib length	5.5 m	
	Winches	Mounted side by side, power hoisting and lowering with inching capability. Hydraulic motor drive, spur gear reduction, and counterbalance valve	
	Brakes	Band type, with negative brake modes.	
DRUMS	Main hoist	280 mm P.C.D. x 318 mm width	
	Aux hoist	280 mm P.C.D. x 170 mm width	
Wire Ropes	Main hoist	14mm dia x137m IWRC 6 X Fi (29) c/o hard twist rope	
	Aux hoist	14mm dia. X65m 4 x F (40) c/o anti twist rope	
LINE SPEED	Main hoist	98 m/min (at 4th layer)	
	Aux. hoist:	85 m/min (at 2nd layer)	
HYDRAULIC SYSTEM	PUMPS	2 variable plunger pumps and 3gear	
	1st pump	Boom hoist, boom telescope, and winch assist	
	2nd pump:	Outriggers, and winch system	
	3rd pump	Swing and steering	
	4th pump	Pilot circuits for the clutches and negative brake cylinders, steering,	
	5th pump	Steering assist system,	
	MOTORS	Two plunger motors power the main hoist, the auxiliary hoist, and the swing.	
ENGINE	MITSUBISHI 6D16-TE1/6D16-TUG turbocharged, water-cooled diesel engine with 4 cycles, 6 cylinders, and direct injection.		
	Max. output	136 kW at 2,800 min ⁻¹	
	Max. torque	637 N.m at 1,600 min.	
	Material	Steel	
	Standard	I.S.O (Others, please specify)	
Warranty	Minimum 1 Year		
<ul style="list-style-type: none"> • All the Specification Sheets must be presented with the Proposal. • All the standard safety features must be included. 			

دسره نامہ دی فہرست	دسره نامہ دی فہرست
<p>تہ: _____</p> <p>سرس: _____</p> <p>دنگو: _____</p> <p>موری سر: _____</p>	<p>تہ: _____</p> <p>سرس: _____</p> <p>دنگو: _____</p> <p>موری سر: _____</p>
<p>تہ: _____</p> <p>سرس: _____</p> <p>دنگو: _____</p> <p>موری سر: _____</p>	<p>تہ: _____</p> <p>سرس: _____</p> <p>دنگو: _____</p> <p>موری سر: _____</p>
<p>دسره نامہ دی فہرست</p>	<p>دسره نامہ دی فہرست</p>
<p>تہ: _____</p>	<p>تہ: _____</p>
<p>سرس: _____</p>	<p>سرس: _____</p>
<p>دنگو: _____</p>	<p>دنگو: _____</p>
<p>موری سر: _____</p>	<p>موری سر: _____</p>
<p>دسره نامہ دی فہرست</p>	<p>دسره نامہ دی فہرست</p>
<p>تہ: _____</p>	<p>تہ: _____</p>
<p>سرس: _____</p>	<p>سرس: _____</p>
<p>دنگو: _____</p>	<p>دنگو: _____</p>
<p>موری سر: _____</p>	<p>موری سر: _____</p>

7 - سہولتیں

کابیلکو R-200 نیشنل کرین / کابیلکو ریسٹورڈ / کابیلکو کرین

کابیلکو ریسٹورڈ / کابیلکو کرین

01 نمبر: KOBELCO R-200

سورجی ڈیپارٹمنٹ کی طرف سے فراہم کی جانے والی سہولتیں:

- 1- سورجی ڈیپارٹمنٹ کی طرف سے فراہم کی جانے والی سہولتیں ڈیپارٹمنٹ کی طرف سے فراہم کی جائیں گی۔ ڈیپارٹمنٹ سہولتیں فراہم کرنے والے کے ذریعے فراہم کی جائیں گی۔
- 2- سورجی ڈیپارٹمنٹ کے ذریعے فراہم کی جانے والی سہولتیں ڈیپارٹمنٹ کے ذریعے فراہم کی جائیں گی۔
- 3- ڈیپارٹمنٹ کے ذریعے فراہم کی جانے والی سہولتیں ڈیپارٹمنٹ کے ذریعے فراہم کی جائیں گی۔
- 4- سورجی ڈیپارٹمنٹ کے ذریعے فراہم کی جانے والی سہولتیں ڈیپارٹمنٹ کے ذریعے فراہم کی جائیں گی۔
- 5- ڈیپارٹمنٹ کے ذریعے فراہم کی جانے والی سہولتیں ڈیپارٹمنٹ کے ذریعے فراہم کی جائیں گی۔
- 6- ڈیپارٹمنٹ کے ذریعے فراہم کی جانے والی سہولتیں ڈیپارٹمنٹ کے ذریعے فراہم کی جائیں گی۔
- 7- ڈیپارٹمنٹ کے ذریعے فراہم کی جانے والی سہولتیں ڈیپارٹمنٹ کے ذریعے فراہم کی جائیں گی۔
- 8- ڈیپارٹمنٹ کے ذریعے فراہم کی جانے والی سہولتیں ڈیپارٹمنٹ کے ذریعے فراہم کی جائیں گی۔
- 9- ڈیپارٹمنٹ کے ذریعے فراہم کی جانے والی سہولتیں ڈیپارٹمنٹ کے ذریعے فراہم کی جائیں گی۔

Supply and Delivery of recondition (KOBELCO R-200 Crane)Ihavandhoo Council

To be specified by Vendor

General	/ Brand: (preferred)	KOBELCO R-200 (Vendor MUST specify)	
	Type:	4-wheel drive (4WD), with 2-wheel drive (2WD) select for high speed mode.	
	Capacity	20 metric tonx2.5m	
	Country of Origin	Japan	
	PASSENGER:	1 person	
	GRADEABILITY	θ 0.6 (31°)	
	Running Hours	Below 700	
	MAX. TRAVEL SPPED:	49 km/h	
	HOOK BLOCK	4-sheave, Optional 20 metric ton block (or standard 16 metric ton block) with safety	

		latch for main hoist, 2.9 metric ton hook with swivel and safety latch for aux. hoist.	
	TIRES	Front/Rear: 325/95 R24 161E ROAD	
	FUEL TANK Capacity	250 liters	
	OUTRIGGERS	Hydraulic H-type outriggers.	
	Year of Manufacture	2022 or later	
SAFETY DEVICES (Standard)	Moment limiter (auto-stop)	Swing lock device	
	Swing range limit device	Working range limit device	
	Boom telescope safety device	Overhoist prevention device (auto-stop)	
	Base machine inclination meter	Interceptive lever lock for on and off	
	Outrigger extension width automatic detecting device	Auxiliary brake for operating	
	Boom hoist safety device	Safety lock lever	
	Hydraulic safety valve	Sling wire lock	
	Boom telescoping default operation prevention device	Winch drum safety device Outrigger safety device	
	Swing flasher lamps	Anti-slip seat	
	Emergency steering device	Rear steering auto-lock	
	Suspension lock device	Engine overrun warning buzzer	
Boom	Fully retracted length	6.7m	
	Fully extended length	25.0m	
	Boom raising angle:	9 to 80°	
	Boom raising time:	39 sec	
	Boom telescoping time:	60 sec / 18.3 m	
JIB	Jib length	5.5 m	
	Winches	Mounted side by side, power hoisting and lowering with inching capability. Hydraulic motor drive, spur gear reduction, and counterbalance valve	
	Brakes	Band type, with negative brake modes.	
DRUMS	Main hoist	280 mm P.C.D. x 318 mm width	
	Aux hoist	280 mm P.C.D. x 170 mm width	
Wire Ropes	Main hoist	14mm dia x137m IWRC 6 X Fi (29) c/o hard twist rope	
	Aux hoist	14mm dia. X65m 4 x F (40) c/o anti twist rope	
LINE SPEED	Main hoist	98 m/min (at 4th layer)	
	Aux. hoist:	85 m/min (at 2nd layer)	
	PUMPS	2 variable plunger pumps and 3gear	

HYDRAULIC SYSTEM	1st pump	Boom hoist, boom telescope, and winch assist	
	2nd pump:	Outriggers, and winch system	
	3rd pump	Swing and steering	
	4th pump	Pilot circuits for the clutches and negative brake cylinders, steering,	
	5th pump	Steering assist system,	
	MOTORS	Two plunger motors power the main hoist, the auxiliary hoist, and the swing.	
ENGINE	MITSUBISHI 6D16-TE1/6D16-TUG turbocharged, water-cooled diesel engine with 4 cycles, 6 cylinders, and direct injection.	MITSUBISHI 6D16-TE1/6D16-TUG turbocharged, water-cooled diesel engine with 4 cycles, 6 cylinders, and direct injection.	
	Max. output	136 kW at 2,800 min ⁻¹	
	Max. torque	637 N.m at 1,600 min.	
	Material	Steel	
	Standard	I.S.O (Others, please specify)	
Warranty	Minimum 1 Year		
<ul style="list-style-type: none"> • All the Specification Sheets must be presented with the Proposal. • All the standard safety features must be included. 			

KOBELCO

NEW RK SERIES

ROUGH TERRAIN CRANE

RK200

SPECIFICATIONS

Max. Lifting Capacity: **20 tons x 2.5 m**

Max. Boom Length: **25.0 m**



KOBELCO CONSTRUCTION MACHINERY CO., LTD.

SPECIFICATIONS

UPPER STRUCTURE



SWING UNIT

A hydraulic piston motor drives the swing pinion through a deck-mounted planetary gear reducer for 360° continuous rotation.

Hydraulic flow into the swing motor is controlled by a manual valve in the swing circuit. The brake valve allows the operator to select free or automatic braking when the swing control lever is set in neutral.

SWING PARKING BRAKE: manual disc brake

SWING GEAR: Internal spur gear

SLEWING RING: Integral with the swing gear, with a single row of ball bearings.

SWING SPEED: 2.8 min⁻¹(rpm)



WINCHES

Mounted side by side, power hoisting and lowering with inching capability. Hydraulic motor drive, spur gear reduction, and counterbalance valve.

BRAKES

Band type, with negative brake modes.

DRUMS

Main hoist: 280 mm P.C.D. x 318 mm width

Aux. hoist: 280 mm P.C.D. x 170 mm width

WIRE ROPES

Main hoist	14 mm dia. x 137 m	IWRC 6 X Fi (29) c/o hard twist rope 4 x F (40) c/o anti twist rope (Europe area)
Aux. hoist	14 mm dia. x 65 m	IWRC 6 X Fi (29) c/o hard twist rope 4 x F (40) c/o anti twist rope (Europe area)

LINE SPEED

Main hoist: 98 m/min (at 4th layer)

Aux. hoist: 85 m/min (at 2nd layer)

BOOM HOIST

One-double acting hydraulic cylinder with holding valve.



BOOM TELESCOPE

Full power telescoping by two hydraulic cylinders with holding valves and telescoping assistance cables for the boom tip section.

CONTROLS

Five hand control levers for swing, telescope (with pedal), main winch, auxiliary winch, and boom hoist (with pedal). These are remote-control type without steps and can be stored in their bases when not in use.

Other controls include: two short levers for main and auxiliary winch clutches and negative brake ON-OFF; one short lever for swing parking brake; one lever for telescope change; one lever for transmission gear selection; two pedals for main and (auxiliary winch drum brakes); throttle control; and one travel brake pedal.



OPERATOR'S CAB

All-weather, wide-view cab with safety glass, sliding door, roll-down window, and sashless roof window with wiper. Adjustable driver's seat with seat belt.

SAFETY DEVICES (Standard)

Moment limiter (auto-stop)	Swing lock device
Swing range limit device	Working range limit device
Boom telescope safety device	Overhoist prevention device (auto-stop)
Base machine inclination meter	Interceptive lever lock for on and off
Outrigger extension width automatic detecting device	Auxiliary brake for operating
Boom hoist safety device	Safety lock lever
Hydraulic safety valve	Sling wire lock
Boom telescoping default operation prevention device	Winch drum safety device
Swing flasher lamps	Outrigger safety device
	Anti-slip seat

HYDRAULIC SYSTEM



PUMPS

2 variable plunger pumps and 3gear

1st pump : Boom hoist, boom telescope, and winch assist

2nd pump : Outriggers, and winch system

3rd pump : Swing and steering

4th pump : Pilot circuits for the clutches and negative brake cylinders, steering, and air conditioner.

5th pump : Steering assist system,

MOTORS : Two plunger motors power the main hoist, the auxiliary hoist, and the swing.

CONTROL VALVES

Upper

One 5-stack valve : Winch, boom telescope, and boom hoist

One 4-stack valve : Clutch and brake

One 1-stack valve : Swing

Lower

Solenoid valves : Outriggers and suspension lock system

One 2-stack valve : Steering

OIL RESERVOIR : 250 liters

RK200

CARRIER



TYPE

4-wheel drive (4WD), with 2-wheel drive (2WD) select for high speed mode.

MAX. TRAVEL SPEED: 49 km/h

GRADEABILITY: $\tan \theta$ 0.6 (31°)

PASSENGER: 1 person



OUTRIGGERS

Type: Hydraulic H-type outriggers.

Control: Eight double-acting hydraulic cylinders provide independent horizontal and vertical movement for each outrigger. Outriggers can be set from inside the cab or at the side of the carrier.

Outrigger extension	5.1m	4.8m	4.2m	3.2m	1.825m
---------------------	------	------	------	------	--------



ENGINE

MITSUBISHI 6D16-TE1/6D16-TUG (for Europe) turbocharged, water-cooled diesel engine with 4 cycles, 6 cylinders, and direct injection.

Max. output	136 kW at 2,800 min ⁻¹
	141 kW at 2,800 min ⁻¹ (Europe area)
Max. torque	637 N·m at 1,600 min ⁻¹
	637 N·m at 1,600 min ⁻¹ (Europe area)

Displacement..... 7,545 cc

ELECTRICAL SYSTEM

24-volt DC system with two 12-volt batteries

FUEL TANK

Capacity 250 liters

TORQUE CONVERTER

3 element, single-stage, 2 phases, torque converter with manually and automatically controlled lock-up clutch.

TRANSMISSION

3-speed for forward and 1-speed for reverse with high-low shift.

BRAKES

Service: Hydraulic and air booster disc brakes on all wheels.

Auxiliary: Torque converter lock-up linked electronic control exhaust brake.

Parking: Propel shaft brake internal expansion type with auxiliary brake for crane operation.



STEERING

Hydraulic power steering system with emergency steering device and about-face steering compensation device.

Steering modes:

Normal: 2W (front)	Rear: 2W (rear)
Cramp: 4W	Crab: 4W

SUSPENSION

Front and rear axles are fitted with leaf springs with shock absorbers.

FRONT/REAR AXLES

Fully floating drive-steer type axles.



AXLE LOADING

Gross-Vehicle Weight	19,535 kg
Front-Vehicle Weight	9,620 kg
Rear-Vehicle Weight	9,915 kg

TIRES

Front/Rear: 325/95 R24 161E ROAD

LIGHTS

Headlights	License plate light
Clearance light	Directional lights
Parking lights	Back light

SAFETY DEVICES

Emergency steering device
Rear steering auto-lock
Suspension lock device
Engine overrun warning buzzer
Reverse travel buzzer

ATTACHMENTS



BOOM

Boom consists of a boom base and four power telescoping sections. The first sections extended separately as do the 2nd and 3rd sections, and 4th and 5th sections synchronized.

All-welded, high tensile strength steel box construction.

Max. rated lifting capacity: 20.0 metric ton x 2.5 m

Fully retracted length 6.7 m

Fully extended length 25.0 m

Boom raising angle: -9 to 80°

Boom raising time: 39 sec

Boom telescoping time: 60 sec / 18.3 m



JIB

Compressed truss-type jib extendable to stored alongside boom. Jib swing down under the boom and twist to set out. Jib offsets 5°, 17°, and 30° with suspension rods.

Jib length 5.5 m

AUXILIARY SHEAVE

The auxiliary sheave permits one-part line operation.



HOOK BLOCK

4-sheave, Optional 20 metric ton block (or standard 16 metric ton block) with safety latch for main hoist, 2.9 metric ton hook with swivel and safety latch for aux. hoist.

LIFTING CAPACITIES

NOTES:

OPERATION WITH OUTRIGGERS

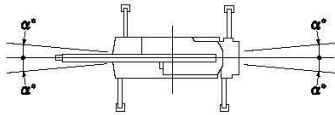
- Rated load do not exceed 75% of the tipping loads with machine set horizontally on a firm and level ground, satisfy the specified stability over the front, and include weight of hook block(s) and other handling accessories. Ratings shown in \square are based on the machine's structural strength, and others are determined by the machine's stability.
- The working radius given in the charts allow for loaded boom deflection. Always operate the machine on the basis of actual operating radius.
- Weight of hooks, hook blocks, slings and other lifting devices are a part of the total load. Their total weight must be subtracted load to obtain the weight that can be lifted.

Hooks	20-ton	16-ton	2.9-ton
Weight	155 kg (opt.)	140 kg	45 kg

- Maximum outrigger extension is 5.1 m. Three intermediate extension positions are also provided at 4.8 m, 4.2 m and 3.2 m. Minimum outrigger extension is 1.825 m.

Over-the-front area

Over-the-rear area



Outrigger extension	4.8m	4.2m	3.2m	Min. outrigger extension
α°	33'	28'	20'	5'

- Rated load in the over-the-side whole around various depending on the extension position of outriggers. Therefore, crane operation must be performed based on the rating chart corresponding to each extended outrigger position.
- To determine load ratings that fall between those shown in the charts, proceed as follows:
 - For boom lengths not listed use rating for next longer boom length or next shorter boom length, whichever is smaller.
 - For load radii not shown, use rating for next larger radius.
- Ratings of the auxiliary sheave are the same as main boom ratings, but should not exceed 2,900kg. Ratings of the auxiliary sheave are calculated by deducting 20-ton hook weight (155 kg) or 16-ton hook weight (140 kg) from main boom ratings.
- Jib operation must be based on the main boom angle.
- Ratings of the boom with extended jib are calculated by deducting 350 kg besides the weight of 20-ton hook block and the sling wire from the rated loads. At this time, do not use the auxiliary sheave.
- In such a condition not shown in the rating chart, operation is impossible. Lowering the boom over critical degrees leads to overturn even with no load. Be careful extremely.
- Standard hoist reevings are shown below. Rated single-line pull must not exceed 2,900 kg.

Boom length	6.7m		11.3m	15.9m to 25.0m	Jib aux. sheave
Hook	20-ton	16-ton	16-ton	16-ton	2.9-ton
No. of reeving	8	6	6	4	1

- In order to prevent a load from falling down to mistake of operation, do not use free-fall in crane operation.
- In lifting load operation in an oblique direction (direction toward the outrigger), sometimes the outrigger float in the diagonal side against the lifted load may be raised depending on a condition. This is caused by torsional rigidity and deflection of the carrier frame, and stability is not lost. The stability of this machine in operation within the rating is secured in the condition that the machine is set horizontally on a level and firm ground.

OPERATION WITHOUT OUTRIGGERS (ON TIRES)

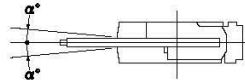
- Rated load do not exceed 75% of the tipping loads with machine set horizontally on a firm and level ground, satisfy the specified stability over the front, and include weight of hook block(s) and other handling accessories. Ratings shown in \square are based on the machine's structural strength, and others are determined by the machine's stability. Tire specified air pressure is set to 900 kPa (9.0 kgf/cm²).
- The working radius given in the charts allow for loaded boom deflection. Always operate the machine on the basis of actual operating radius.
- Weight of hooks, hook blocks, slings and other lifting devices are a part of the total load. Their total weight must be subtracted load to obtain the weight that can be lifted.

Hooks	16-ton	2.9-ton
Weight	140 kg	45 kg

*Tire specified air pressure: 900kPa (9.0 kgf/cm²)

- Load ratings differ for over-the-front and over-the-side operation. Care must e taken to avoid overload when swinging a load from an over-the-front position to an over-the-side position.

Over-the-front area



On tires	Stationery	Pick & carry
α° (FRONT)	1'	1'

- Ratings of the auxiliary sheave are the same as main boom ratings, but should not exceed 2,900 kg. Ratings of the auxiliary sheave are calculated by deducting 20-ton hook weight (155 kg) or 16-ton hook weight (140 kg) from main boom ratings.
- Do not use jib operation and free fall.
- Parking brake and auxiliary operation brake must be applied during stationary load lifting.
- Pick and carry operations must be done in the low travel mode.
- During pick and carry operations, keep the load close to the ground to avoid swaying, and travel no faster than 2.0 km/h. Avoid cornering, sudden starts (acceleration), and sudden braking. Boom must be centered over the front area.
- Do not operate the crane functions while carrying the load.
- Standard hoist reevings are shown below. Single-line load must not exceed 2,900 kg.

Boom length	6.7m		11.3m to 20.4m	Jib aux. sheave
Hook	20-ton	16-ton	16-ton	2.9-ton
No. of reeving	4	4	4	1

BOOM LIFTING CAPACITIES

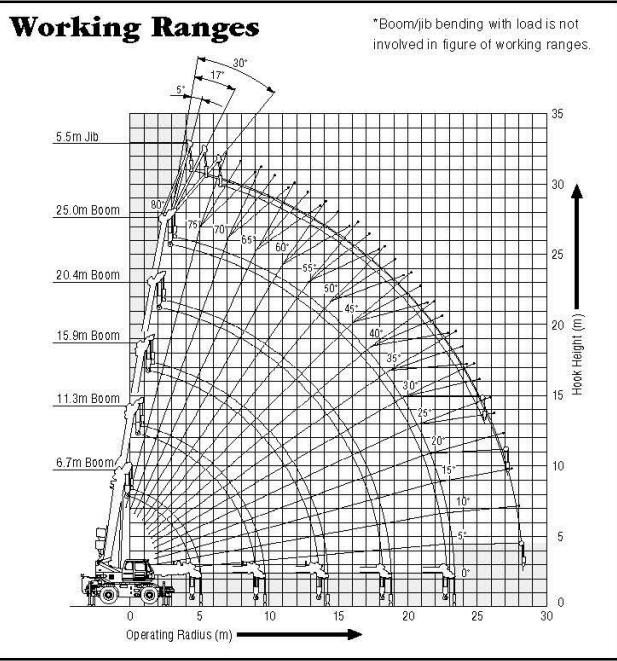
RK200

Main Boom Lifting Capacities with Outriggers

Unit: metric ton

MAIN Operating radius (m)	With outriggers in 5.1m position 360° swing area Boom length in meters					With outriggers in 4.8m position Over the side Boom length in meters					With outriggers in 4.2m position Over the side Boom length in meters					With outriggers in 3.2m position Over the side Boom length in meters				
	6.7	11.3	15.9	20.4	25.0	6.7	11.3	15.9	20.4	25.0	6.7	11.3	15.9	20.4	25.0	6.7	11.3	15.9	20.4	25.0
	2.5	20.00	12.00	9.00	7.00		16.00	12.00	9.00	7.00		16.00	12.00	9.00	7.00		16.00	12.00	9.00	7.00
3.0	16.00	12.00	9.00	7.00		16.00	12.00	9.00	7.00		16.00	12.00	9.00	7.00		13.00	12.00	9.00	7.00	
3.5	14.00	12.00	9.00	7.00	5.00	14.00	12.00	9.00	7.00	5.00	14.00	12.00	9.00	7.00	5.00	10.00	10.00	9.00	7.00	5.00
4.0	12.50	12.00	9.00	7.00	5.00	12.50	12.00	9.00	7.00	5.00	12.50	12.00	9.00	7.00	5.00	7.70	7.80	7.20	7.00	5.00
4.5	11.50	11.10	8.50	7.00	5.00	11.50	11.10	8.50	7.00	5.00	11.20	10.55	8.30	7.00	5.00	5.40	6.20	6.10	6.45	5.00
5.0		10.25	8.05	7.00	5.00		10.15	8.05	7.00	5.00		9.15	7.65	7.00	5.00		5.10	5.00	5.30	5.00
5.5		9.40	7.60	6.60	4.75		9.10	7.60	6.60	4.75		7.75	6.95	6.55	4.75		4.30	4.20	4.50	4.70
6.0		8.55	7.15	6.20	4.55		8.05	7.10	6.20	4.55		6.55	6.30	6.10	4.55		3.60	3.60	3.85	4.05
6.5		7.70	6.70	5.80	4.35		7.00	6.60	5.80	4.35		5.65	5.60	5.70	4.35		3.10	3.10	3.35	3.55
7.0		6.85	6.20	5.50	4.15		6.20	6.05	5.50	4.15		4.90	4.95	5.25	4.15		2.70	2.70	2.95	3.10
7.5		6.00	5.70	5.15	3.90		5.40	5.45	5.15	3.90		4.30	4.40	4.70	3.95		2.40	2.35	2.60	2.80
8.0		5.30	5.20	4.85	3.70		4.75	4.80	4.80	3.70		3.80	3.85	4.20	3.70		2.10	2.05	2.30	2.50
9.0		4.25	4.25	4.30	3.30		3.80	3.85	4.10	3.30		3.05	3.10	3.40	3.30		1.65	1.60	1.85	2.00
10.0			3.50	3.75	3.00			3.15	3.45	3.00			2.50	2.80	2.90			1.25	1.50	1.65
11.0			2.90	3.20	2.70			2.60	2.90	2.70			2.05	2.35	2.50			1.00	1.20	1.35
12.0			2.45	2.75	2.50			2.20	2.45	2.45			1.70	1.95	2.15			0.80	1.00	1.15
13.0			2.05	2.35	2.30			1.85	2.10	2.20			1.40	1.65	1.85			0.63	0.80	0.95
14.0			1.85	2.05	2.10			1.70	1.80	1.95			1.25	1.45	1.60			0.50	0.65	0.80
15.0			(13.6m)	1.75	1.90			(13.6m)	1.55	1.70			(13.6m)	1.20	1.40			(13.6m)	0.55	0.65
16.0				1.50	1.70				1.35	1.50				1.00	1.20				0.40	0.55
17.0				1.32	1.50				1.15	1.30				0.80	1.00					0.45
18.0				1.15	1.30				0.95	1.15				0.65	0.85					0.35
19.0				1.15	1.15				0.90	1.00				0.60	0.70					
20.0				(18.1m)	1.00				(18.1m)	0.85				(18.1m)	0.60					
21.0					0.90					0.75					0.50					
22.0					0.80					0.65					0.40					
22.7					0.74					0.60					0.35					
Min. boom angle	0°	0°	0°	0°	0°	0°	0°	0°	0°	0°	0°	0°	0°	0°	0°	0°	0°	0°	29°	37°

MAIN Operating radius (m)	With outriggers in min. position Over the side Boom length in meters				
	6.7	11.3	15.9	20.4	25.0
2.5	7.75	7.80	7.80	7.00	
3.0	5.55	5.60	5.60	6.10	
3.5	4.20	4.30	4.25	4.70	4.70
4.0	3.30	3.40	3.35	3.70	3.80
4.5	2.65	2.70	2.70	3.00	3.10
5.0		2.20	2.25	2.55	2.65
5.5		1.80	1.85	2.10	2.25
6.0		1.50	1.55	1.80	1.90
6.5		1.25	1.30	1.55	1.65
7.0		1.05	1.05	1.30	1.45
7.5		0.85	0.85	1.15	1.30
8.0		0.70	0.70	0.95	1.10
9.0			0.45	0.70	0.85
10.0				0.30	0.65
11.0					0.50
12.0					0.30
13.0					
14.0					
15.0					
16.0					
17.0					
18.0					
19.0					
20.0					
21.0					
22.0					
22.7					
Min. boom angle	0°	29°	45°	52°	57°



BOOM LIFTING CAPACITIES

Main Boom Lifting Capacities without Outriggers

Unit: metric ton

MAIN Operating radius (m)	Stationary								Pick & Carry (under 2 km/h)							
	360° swing area				Over the front				360° swing area				Over the front			
	Boom length in meters				Boom length in meters				Boom length in meters				Boom length in meters			
	6.7	11.3	15.9	20.4	6.7	11.3	15.9	20.4	6.7	11.3	15.9	20.4	6.7	11.3	15.9	20.4
3.0	4.40	4.50	4.65	5.00	9.50	8.50	8.50	6.50	4.35	4.40	4.45	3.00	7.00	7.20	6.50	6.00
3.5	3.50	3.65	3.70	4.00	8.30	8.30	8.30	6.50	3.30	3.35	3.60	3.00	6.15	6.30	5.75	6.00
4.0	2.80	2.90	3.00	3.30	7.30	7.30	7.30	6.50	2.60	2.65	2.85	3.00	5.40	5.60	5.00	5.60
4.5	2.20	2.40	2.45	2.75	6.60	6.10	6.10	6.50	2.10	2.10	2.30	2.50	4.75	4.70	4.15	4.80
5.0		1.90	2.00	2.30		5.00	5.10	5.35		1.75	1.90	2.10		3.90	3.50	4.10
5.5		1.60	1.65	2.00		4.20	4.25	4.45		1.45	1.55	1.80		3.30	3.00	3.50
6.0		1.30	1.35	1.70		3.50	3.60	3.90		1.20	1.30	1.50		2.80	2.65	3.00
6.5		1.05	1.10	1.40		3.00	3.10	3.33		1.00	1.10	1.30		2.40	2.30	2.60
7.0		0.85	0.90	1.20		2.65	2.59	2.89		0.80	0.90	1.10		2.10	2.00	2.30
7.5		0.65	0.70	1.00		2.30	2.19	2.54		0.65	0.70	0.90		1.85	1.80	2.05
8.0		0.50	0.50	0.80		2.00	1.89	2.25		0.50	0.50	0.77		1.60	1.65	1.80
9.0				0.55		1.50	1.49	1.79				0.50		1.30	1.30	1.50
10.0				0.35			1.17	1.39				0.30			1.00	1.20
11.0							0.86	1.12							0.70	1.00
12.0							0.64	0.89							0.55	0.80
13.0							0.44	0.70							0.40	0.65
14.0								0.51								0.55
15.0								0.37								0.45
16.0																0.35
17.0																0.30
Min. boom angle	0°	29°	48°	55°	0°	11°	19°	22°	0°	29°	48°	55°	0°	11°	19°	22°

JIB LIFTING CAPACITIES

5.1 M Boom angle	With outriggers in 5.1m position (360° swing area)					
	5.5 m Jib					
	Jib angle:5°		Jib angle:17°		Jib angle:30°	
Operating radius (m)	Rated Load (metric ton)	Operating radius (m)	Rated Load (metric ton)	Operating radius (m)	Rated Load (metric ton)	
80°	4.7	2.00	5.9	1.50	6.8	1.20
75°	7.6	2.00	8.6	1.50	9.4	1.20
70°	10.3	2.00	11.2	1.50	11.8	1.20
65°	12.7	1.62	13.4	1.25	14.1	1.12
60°	14.9	1.35	15.7	1.09	16.3	1.02
55°	17.0	1.15	17.6	0.98	18.3	0.91
50°	19.0	1.00	19.6	0.87	20.1	0.82
45°	20.8	0.87	21.4	0.78	21.8	0.75
40°	22.5	0.75	22.9	0.70	23.1	0.68
35°	23.9	0.65	24.3	0.62	24.4	0.60
30°	25.2	0.56	25.4	0.54	25.4	0.52
25°	26.2	0.48	26.4	0.46		
20°	27.1	0.41	27.1	0.38		
15°	27.7	0.35				
10°	28.0	0.30				
5°	28.3	0.25				
Min. boom angle		5°		20°		30°

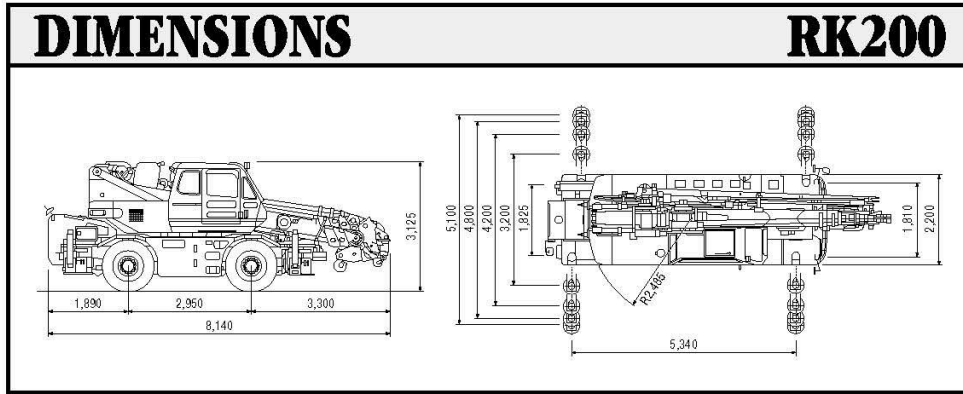
RK200

Unit: metric ton

4.8 M	With outriggers in 4.8 m position (over the side)					
	5.5 m Jib					
	Jib angle:5°		Jib angle:17°		Jib angle:30°	
Boom angle	Operating radius (m)	Rated Load (metric ton)	Operating radius (m)	Rated Load (metric ton)	Operating radius (m)	Rated Load (metric ton)
80°	4.7	2.00	5.9	1.50	6.8	1.20
75°	7.6	2.00	8.6	1.50	9.4	1.20
70°	10.3	2.00	11.2	1.50	11.8	1.20
65°	12.7	1.62	13.4	1.25	14.1	1.12
60°	14.9	1.35	15.7	1.09	16.3	1.02
55°	17.0	1.15	17.6	0.98	18.3	0.91
50°	19.0	1.00	19.6	0.87	20.1	0.82
45°	20.8	0.85	21.4	0.76	21.8	0.73
40°	22.5	0.70	22.9	0.66	23.1	0.63
35°	23.9	0.58	24.3	0.55	24.4	0.53
30°	25.2	0.47	25.4	0.45	25.4	0.41
25°	26.2	0.38	26.4	0.33		
20°	27.1	0.27				
Min. boom angle	20°		25°		30°	

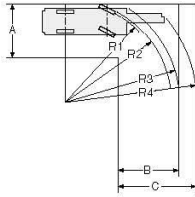
4.2 M	With outriggers in 4.2 m position (over the side)					
	5.5 m Jib					
	Jib angle:5°		Jib angle:17°		Jib angle:30°	
Boom angle	Operating radius (m)	Rated Load (metric ton)	Operating radius (m)	Rated Load (metric ton)	Operating radius (m)	Rated Load (metric ton)
80°	4.7	2.00	5.9	1.50	6.8	1.20
75°	7.6	2.00	8.6	1.50	9.4	1.20
70°	10.3	2.00	11.2	1.50	11.8	1.20
65°	12.7	1.60	13.4	1.25	14.0	1.06
60°	14.9	1.32	15.7	1.09	16.3	0.94
55°	17.0	1.07	17.6	0.93	18.3	0.82
50°	19.0	0.85	19.6	0.78	20.1	0.69
45°	20.8	0.65	21.4	0.63	21.7	0.57
40°	22.5	0.50	22.9	0.49	23.1	0.45
35°	23.9	0.35	24.3	0.35	24.4	0.32
30°	25.2	0.25				
Min. boom angle	30°		35°		35°	

3.2 M	With outriggers in 3.2 m position (over the side)					
	5.5 m Jib					
	Jib angle:5°		Jib angle:17°		Jib angle:30°	
Boom angle	Operating radius (m)	Rated Load (metric ton)	Operating radius (m)	Rated Load (metric ton)	Operating radius (m)	Rated Load (metric ton)
80°	4.7	2.00	5.9	1.50	6.8	1.20
75°	7.6	2.00	8.6	1.50	9.4	1.20
70°	10.3	2.00	11.2	1.50	11.8	1.20
65°	12.7	1.50	13.3	1.15	14.0	1.00
60°	14.7	0.98	15.5	0.84	16.3	0.78
55°	16.7	0.65	17.5	0.58	18.3	0.56
50°	18.8	0.43	19.5	0.40	20.1	0.37
45°	20.6	0.22				
Min. boom angle	45°		50°		50°	



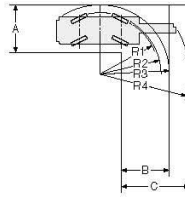
TURNING RADIUS

2-Drive Steering (Front)



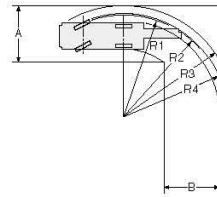
R1	Minimum turning radius	8.60m
R2	Tire clearance with cab	8.78m
R3	Carrier clearance	9.39m
R4	Boom clearance	9.78m
A	Entrance width (carrier)	4.63m
B	Exit width (tires)	4.63m
C	Exit width (boom)	5.02m

4-Drive Steering



R1	Minimum turning radius	4.73m
R2	Tire clearance with cab	4.94m
R3	Carrier clearance	5.53m
R4	Boom clearance	6.15m
A	Entrance width (carrier)	3.79m
B	Exit width (tires)	3.79m
C	Exit width (boom)	4.38m

2-Drive Steering (Rear)



R1	Minimum turning radius	8.60m
R2	Tire clearance with cab	8.78m
R3	Carrier clearance	9.39m
R4	Boom clearance	8.30m
A	Entrance width (carrier)	4.62m
B	Exit width (tires)	4.62m

STANDARD EQUIPMENT

Engine tachometer
Tachograph
Hourmeter
Engine over running alarm
Paper-element air cleaner
Two working lights
Horn
Towing hooks (one front, one rear)
Outrigger plates
Oil cooler
Cab heater/defroster
Air conditioner
Operation Manual: one set

OTHER AMENITIES

Radio
Cigarette lighter
Ashtray
Sun visor
Floor mat
Windshield wiper/washer

OPTIONAL EQUIPMENT

Extra hydraulic oil cooler for hydraulic system

Note: Due to our policy of continual product improvements all designs and specifications are subject to change without advance notice.

KOBELCO CONSTRUCTION MACHINERY CO., LTD.

3-13, Nihonbashi 1-chome, Chuo-ku, TOKYO, 103-8246 JAPAN
Tel: ++81 (0)3 3278-7080/ Fax: ++81 (0)3 3278-7138