

# MARINE OPERATION CENTER

ARCHITECTURAL CONCEPT DRAWINGS

31-FEBRUARY-2024



INFRASTRUCTURE AND BUILDING DEVELOPMENT  
MALDIVES

PROJECT TITLE:

MARINE OPERATION CENTER

MALDIVES POLICE SERVICE SEAL & SIGN

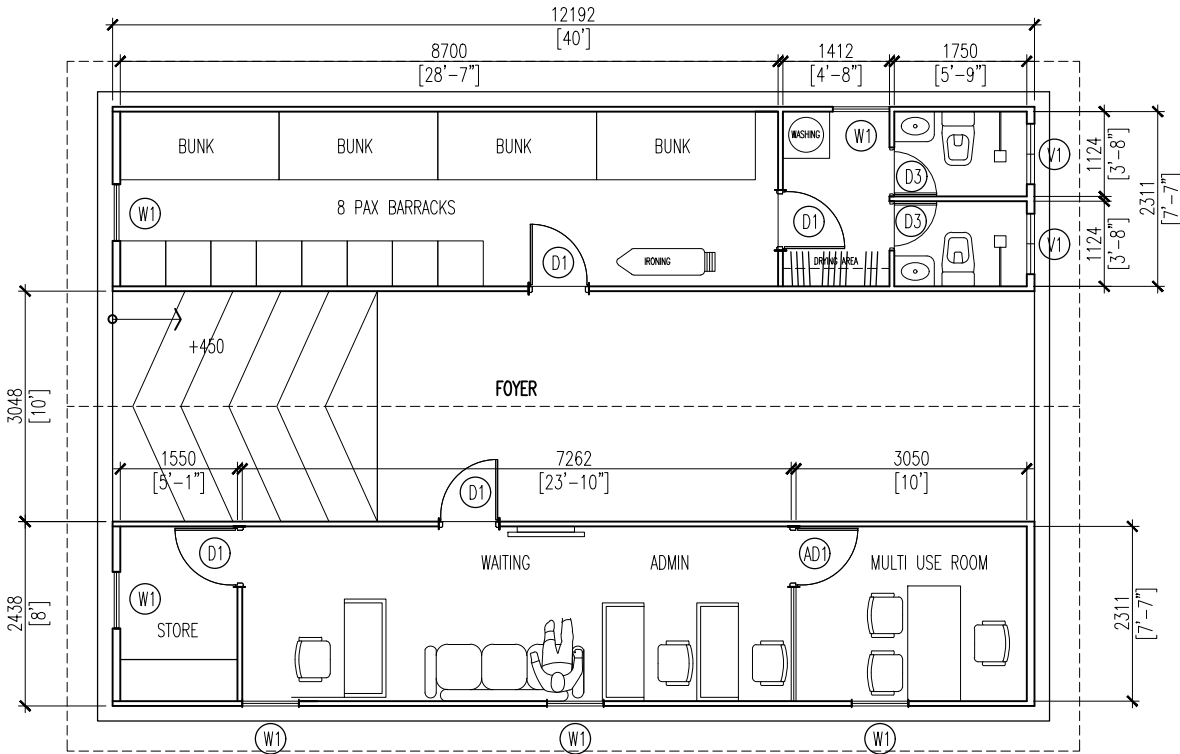
CONTRACTORS SEAL & SIGN

ARCHITECT/DESIGNER      DRAFTED BY

ARCHITECTURAL DRAWINGS

SHEET NO.      31-JANUARY-2024

A-01



GR FLOOR LAYOUT  
SCALE 1:100



INFRASTRUCTURE AND BUILDING DEVELOPMENT  
MALDIVES

PROJECT TITLE:  
MARINE OPERATION CENTER

MALDIVES POLICE SERVICE SEAL & SIGN

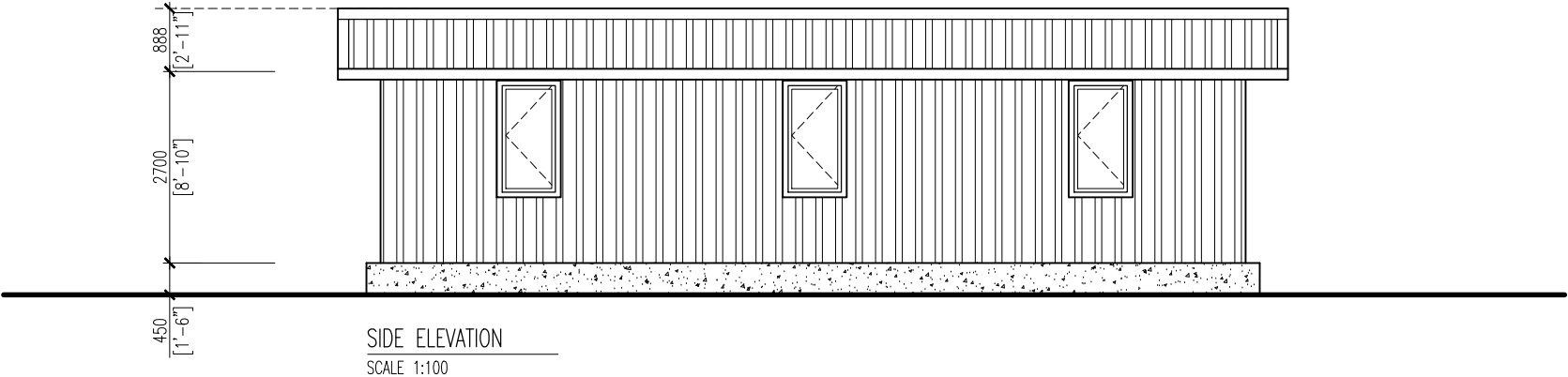
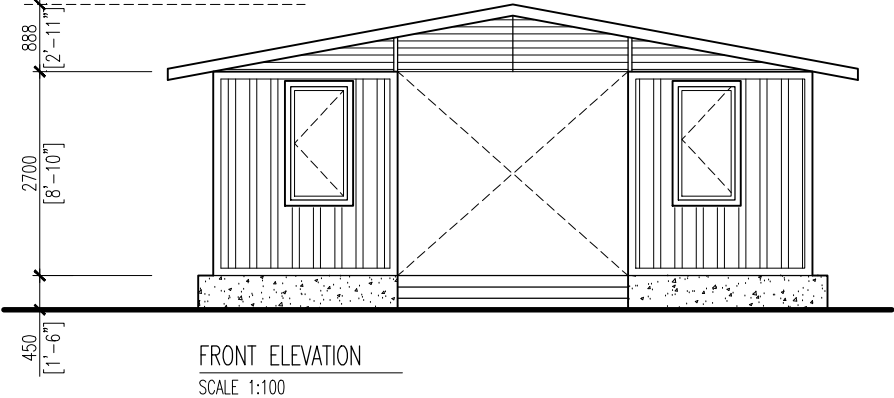
CONTRACTORS SEAL & SIGN

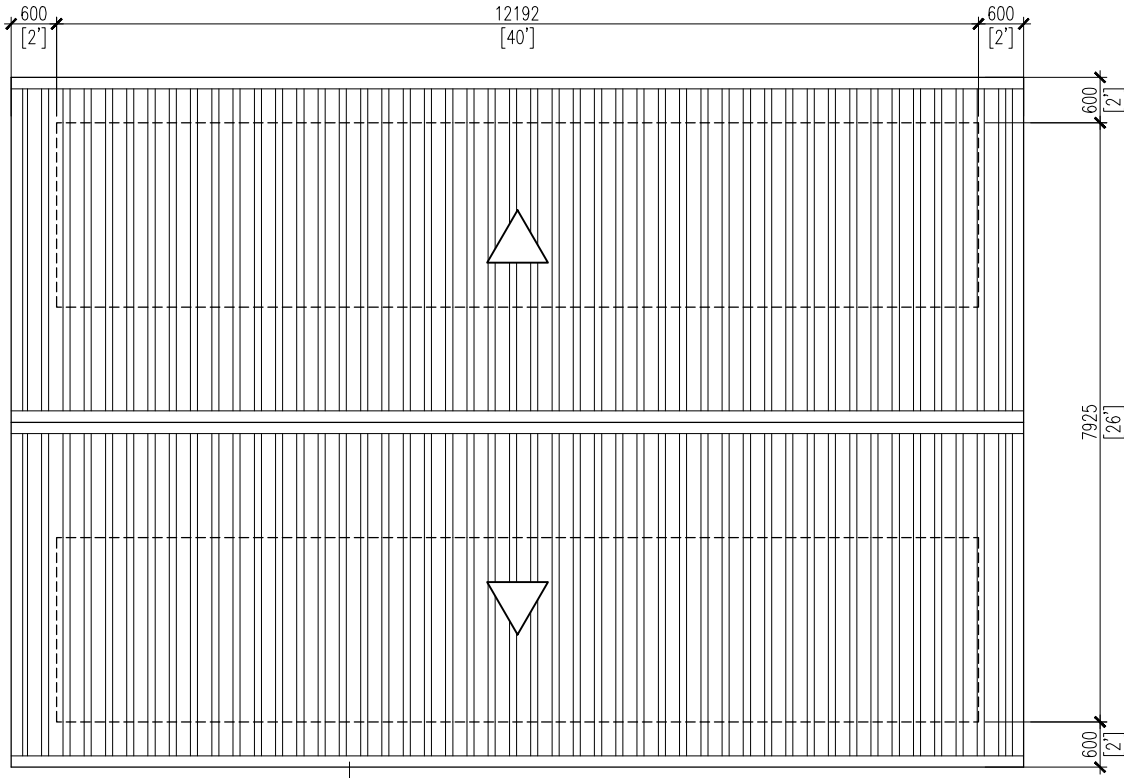
ARCHITECT/DESIGNER      DRAFTED BY

ARCHITECTURAL DRAWINGS

SHEET NO.      31-JANUARY-2024

A-02





ROOF  
SCALE 1:100

PVC GUTTER



INFRASTRUCTURE AND BUILDING DEVELOPMENT  
MALDIVES

PROJECT TITLE:  
MARINE OPERATION CENTER

MALDIVES POLICE SERVICE SEAL & SIGN

CONTRACTORS SEAL & SIGN

ARCHITECT/DESIGNER      DRAFTED BY

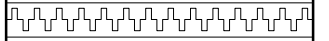
ARCHITECTURAL DRAWINGS

SHEET NO.      31-JANUARY-2024

A-03



INFRASTRUCTURE AND BUILDING DEVELOPMENT  
MALDIVES



PROJECT TITLE:  
MARINE OPERATION CENTER

MALDIVES POLICE SERVICE SEAL & SIGN

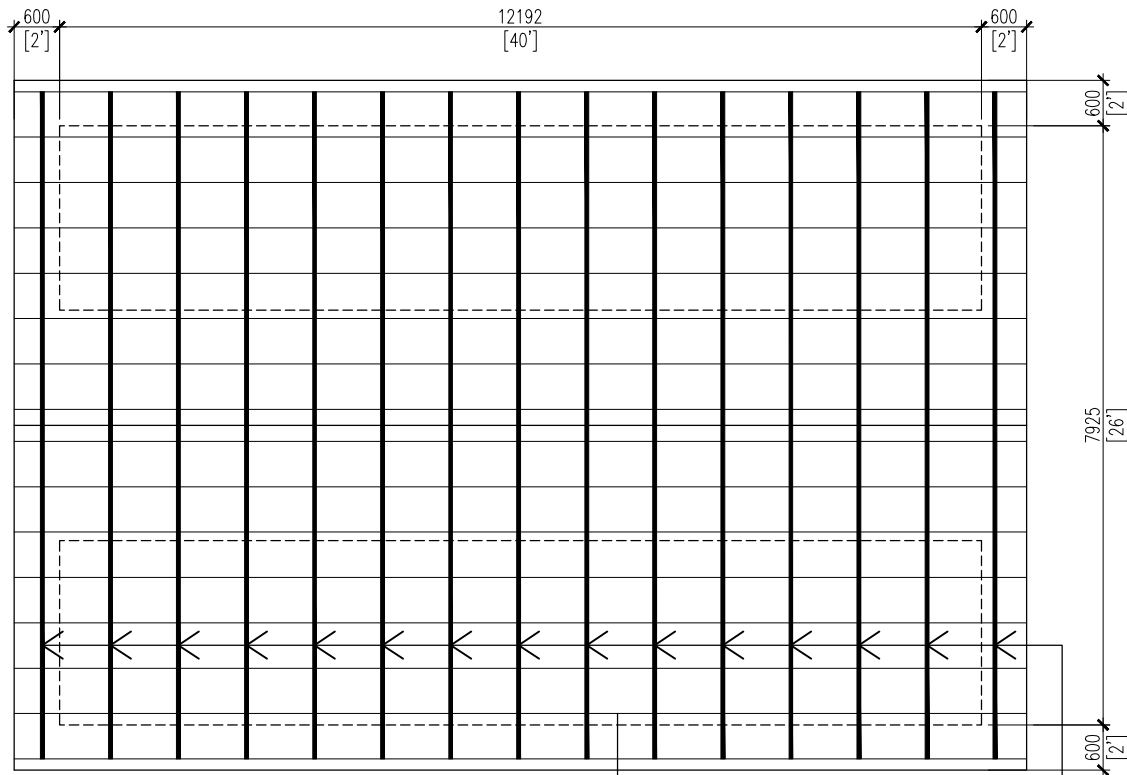
CONTRACTORS SEAL & SIGN

ARCHITECT/DESIGNER      DRAFTED BY

ARCHITECTURAL DRAWINGS

SHEET NO.      31-JANUARY-2024

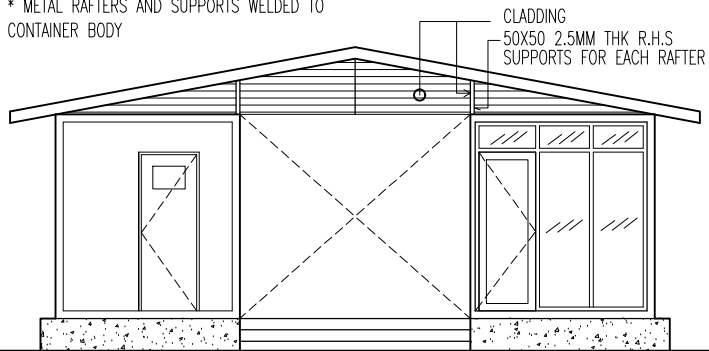
A-04



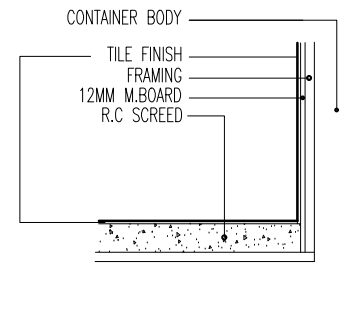
ROOF STRUCTURE  
SCALE 1:100

METAL 2.5MM THK R.H.S 50X100@900 C/C  
50X50 L-SECTION @ 600 C/C

\* METAL RAFTERS AND SUPPORTS WELDED TO  
CONTAINER BODY



SECTION X-X  
SCALE 1:100



TOILET FINISHES DETAIL  
SCALE NTS



INFRASTRUCTURE AND BUILDING DEVELOPMENT  
MALDIVES

PROJECT TITLE:

MARINE OPERATION CENTER

MALDIVES POLICE SERVICE SEAL & SIGN

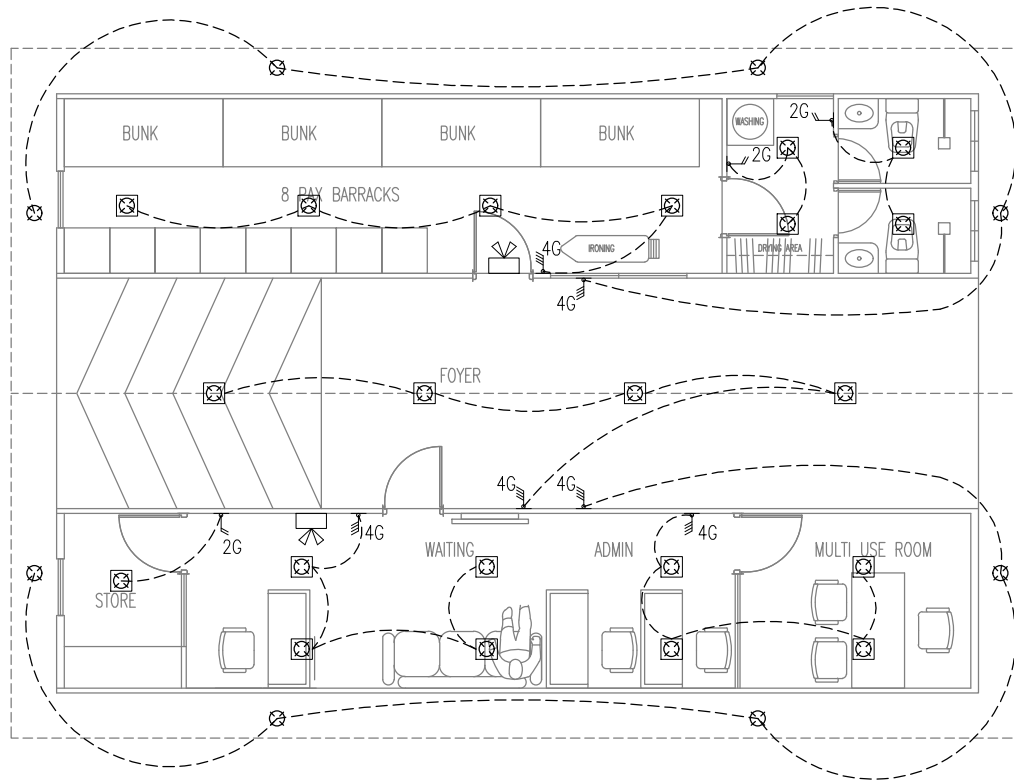
CONTRACTORS SEAL & SIGN

ARCHITECT/DESIGNER      DRAFTED BY

ARCHITECTURAL DRAWINGS

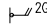
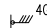



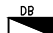
SHEET NO.      31-JANUARY-2024

A-05



GR FLOOR LIGHTS PLAN  
SCALE 1:100

ELECTRICAL LEGEND

-  ONE WAY SWITCH 1.2M (2GNG)
-  ONE WAY SWITCH 1.2M (4GNG)
-  CEILING RECESSED WEATHER PROOF 9W(WHITE) LED LIGHT
-  CEILING MOUNT 18W(WHITE) LED LIGHT
-  EMERGENCY LIGHT HIGH FLUX WHITE LED (8 HRS BATTERY CHARGE)
-  D-BOARD



INFRASTRUCTURE AND BUILDING DEVELOPMENT  
MALDIVES

PROJECT TITLE:  
MARINE OPERATION CENTER

MALDIVES POLICE SERVICE SEAL & SIGN

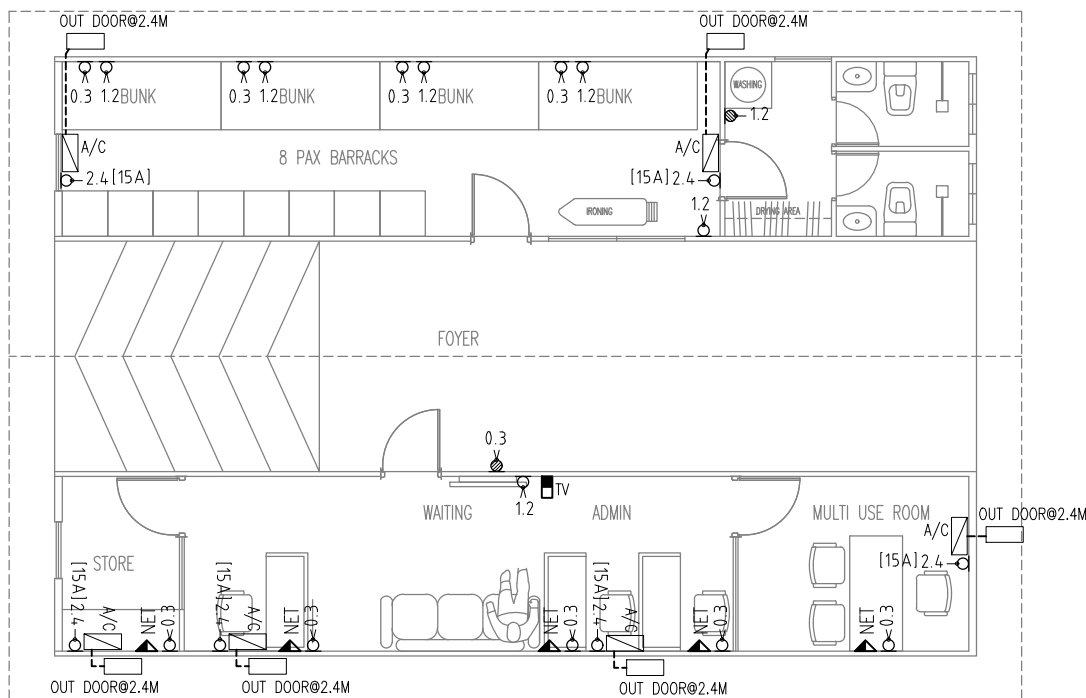
CONTRACTORS SEAL & SIGN

ARCHITECT/DESIGNER      DRAFTED BY

ARCHITECTURAL DRAWINGS

SHEET NO.      31-JANUARY-2024

A-06

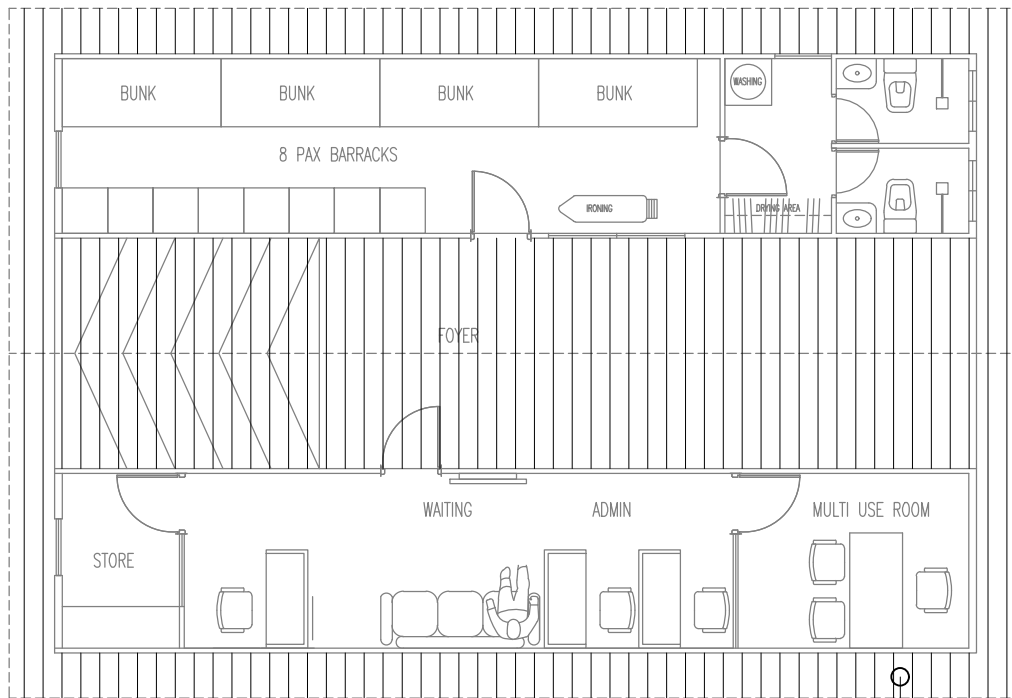


### ELECTRICAL LEGEND

- POWER SOCKET 1.2M (2GNG)
- POWER SOCKET 0.3M (2GNG)
- POWER SOCKET[WEATHER PROOF] 0.3M (2GNG)
- POWER SOCKET[WEATHER PROOF] 1.2M (1GNG)
- POWER SOCKET 2.4M (1GNG)
- NETWORK SOCKET
- TELEVISION OUTLET
- AIR CONDITIONING INDOOR UNIT
- AIR CONDITIONING OUTDOOR UNIT

### GR FLOOR POWER PLAN

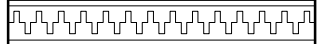
SCALE 1:100



ROOF CEILING PLAN  
SCALE 1:100



INFRASTRUCTURE AND BUILDING DEVELOPMENT  
MALDIVES



PROJECT TITLE:  
MARINE OPERATION CENTER

MALDIVES POLICE SERVICE SEAL & SIGN

CONTRACTORS SEAL & SIGN

ARCHITECT/DESIGNER      DRAFTED BY

ARCHITECTURAL DRAWINGS

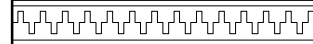
SHEET NO.      31-JANUARY-2024

A-07





INFRASTRUCTURE AND BUILDING DEVELOPMENT  
MALDIVES



PROJECT TITLE:

MARINE OPERATION CENTER

MALDIVES POLICE SERVICE SEAL & SIGN

CONTRACTORS SEAL & SIGN

ARCHITECT/DESIGNER      DRAFTED BY

ARCHITECTURAL DRAWINGS

SHEET NO.      31-JANUARY-2024

A-08

D01	AREA	
	OPEN AREA	
DESCRIPTION	ENTRANCE DOOR	
MATERIALS	ALUMINUM,ALUMINUM CLADDING AND GLASS	
ACCESSORIES	<ul style="list-style-type: none"> <li>- 4 NOS BEARING HINGE</li> <li>- MORTISE LOCK,PNEUMETIC DOOR CLOSER,</li> <li>- FLOOR FIX MAGNETIC DOOR STOPPER</li> <li>- BOTTOM SWEEP NYLON BRUSH</li> </ul>	
FINISHING	- POWDER COATED DARK GRAY	

W1	AREA	
	OPEN AREA	
DESCRIPTION	SIDE HUNG WINDOW	
MATERIALS	CLEAR GLASS AND ALUMINUM	
ACCESSORIES	<ul style="list-style-type: none"> <li>- HINGE</li> <li>- HANDLE LOCK</li> </ul>	
FINISHING	- POWDER COATED DARK GRAY	

1. CONFIRM ACTUAL MEASUREMENTS ON SITE BEFORE FABRICATION
2. SUBMIT ACCESSORIES AND SHOP DRAWINGS FOR APPROVAL
3. ALL DOOR/WINDOWS VIEWED FROM EXTERIOR

NGL= NATURAL GROUND LEVEL FFL= FINISHED FLOOR LEVEL FG= FIXED GLASS

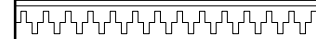
WD=WOOD CG=CLEAR GLASS LW=LOUVERS RG=REFLECTIVE GLASS

## DOOR WINDOW SCHEDULE

SCALE 1:50



INFRASTRUCTURE AND BUILDING DEVELOPMENT  
MALDIVES



PROJECT TITLE:

MARINE OPERATION CENTER

MALDIVES POLICE SERVICE SEAL & SIGN

CONTRACTORS SEAL & SIGN

ARCHITECT/DESIGNER      DRAFTED BY

ARCHITECTURAL DRAWINGS

SHEET NO.      31-JANUARY-2024

A-09

AD1	AREA	
	OPEN AREA	
DESCRIPTION	WINDOW	
MATERIALS	CLEAR GLASS AND ALUMINUM	
ACCESSORIES	<ul style="list-style-type: none"> <li>- HINGE</li> <li>- HANDLE LOCK</li> </ul>	
FINISHING	- POWDER COATED DARK GRAY	

1. CONFIRM ACTUAL MEASUREMENTS ON SITE BEFORE FABRICATION
  2. SUBMIT ACCESSORIES AND SHOP DRAWINGS FOR APPROVAL
  3. ALL DOOR/WINDOWS VIEWED FROM EXTERIOR
- NGL= NATURAL GROUND LEVEL FFL= FINISHED FLOOR LEVEL FG= FIXED GLASS  
WD=WOOD CG=CLEAR GLASS LW=LOUVERS RG=REFLECTIVE GLASS

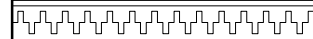
## DOOR WINDOW SCHEDULE

SCALE 1:50

D3	AREA	
	OPEN AREA	
DESCRIPTION	TOILET DOOR	
MATERIALS	ALUMINUM DOOR	
ACCESSORIES	<ul style="list-style-type: none"> <li>- 4 NOS BEARING HINGE [WITH SS SCREWS]</li> <li>- KNOB LOCK,</li> <li>- FLOOR FIX MAGNETIC DOOR STOPPER</li> </ul>	
FINISHING	WHITE COLOR	



INFRASTRUCTURE AND BUILDING DEVELOPMENT  
MALDIVES



PROJECT TITLE:

MARINE OPERATION CENTER

MALDIVES POLICE SERVICE SEAL & SIGN

CONTRACTORS SEAL & SIGN

ARCHITECT/DESIGNER      DRAFTED BY

ARCHITECTURAL DRAWINGS

SHEET NO.      31-JANUARY-2024

A-10

V01	AREA	
	OPEN AREA	
DESCRIPTION	LOUVERED ALUMINUM WINDOW	
MATERIALS	ALUMINUM	
ACCESSORIES	-	
FINISHING	POWDER COATED WHITE	

1. CONFIRM ACTUAL MEASUREMENTS ON SITE BEFORE FABRICATION
  2. SUBMIT ACCESSORIES AND SHOP DRAWINGS FOR APPROVAL
  3. ALL DOOR/WINDOWS VIEWED FROM EXTERIOR
- NGL= NATURAL GROUND LEVEL FFL= FINISHED FLOOR LEVEL FG= FIXED GLASS  
WD=WOOD CG=CLEAR GLASS LW=LOUVERS RG=REFLECTIVE GLASS

## DOOR WINDOW SCHEDULE

SCALE 1:50