

Welcome to Sh. Komandoo monument

The following is the document which consists of the details of the monument which represents Sh.Komandoo. This monument will be placed at the upfront of the island, welcoming all the visitors to the island.

The Monument (Details)

Body / Circles

(From left to right)

- Circle 1 (offset): Diameter 3 feet, offset size 10-inch, width 8 inches.
- Circle 2: Diameter 5 feet, width 8 inches.
- Circle 3 (offset): Diameter 8 feet, offset size 1 feet 6-inch, width 8 inches.
- Circle 4: Diameter 5 feet, width 8 inches.
- Circle 5: (offset): Diameter 3 feet, offset size 10-inch, width 8 inches.

The circles will be placed side by side (circle 1 to the very left) with a gap of 5 inches in between each circle. Constructed using a durable material such as concrete, cement or fiber glass, each circle will be textured and painted with stark white shade (#c9c3bd).

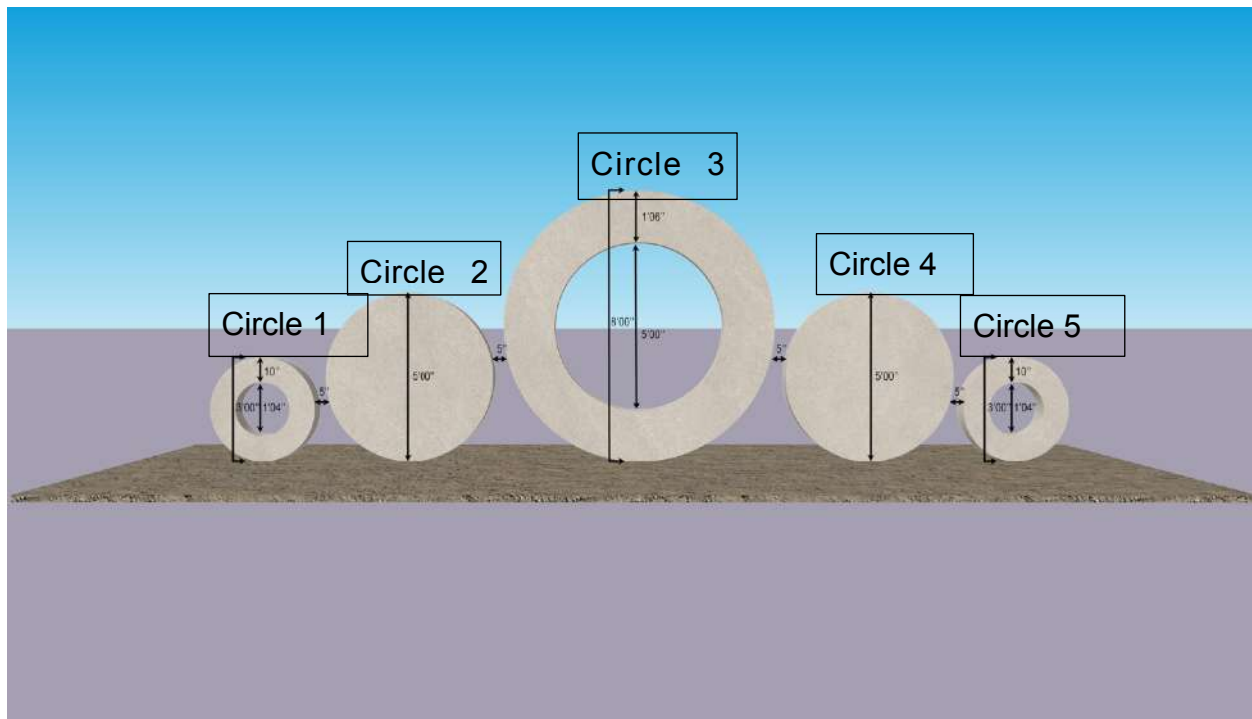


Figure 1 Circles Front

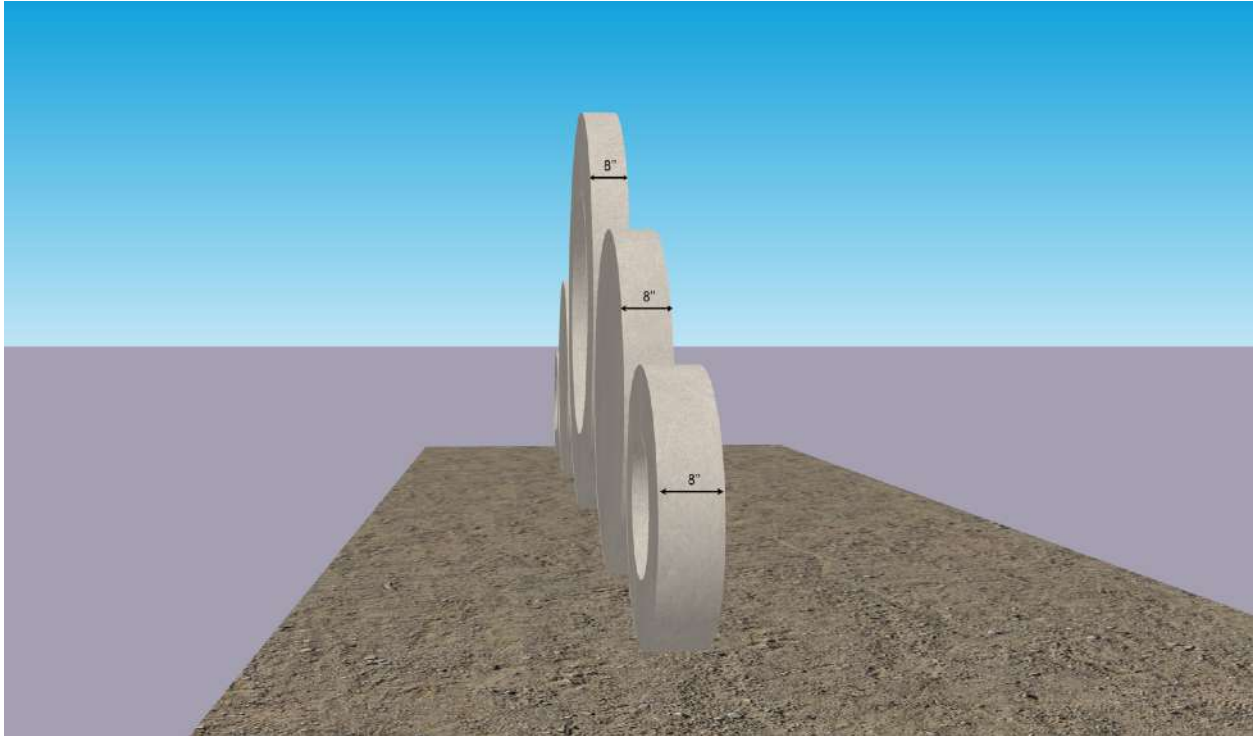


Figure 2 Circles Side



Figure 3 Texture and Color

Spheres

(From left to right)

- Sphere 1: 2 feet 6 inch.
- Sphere 2: 1 feet 7 inch.
- Sphere 3: 1 feet 7 inch.
- Sphere 4: 2 feet 6 inch.

The spheres will be placed, forming a curve with a gap of 4 feet 5 inches in between each sphere. Constructed using a durable material, concrete cement, each circle will be textured and painted with stark white shade (#c9c3bd). These will be placed in front of the circles. The distance between the circles and spheres 1 and 4 is 3 feet 3 inch. and the distance between the circles to the spheres 2 and 3 is 5 feet.

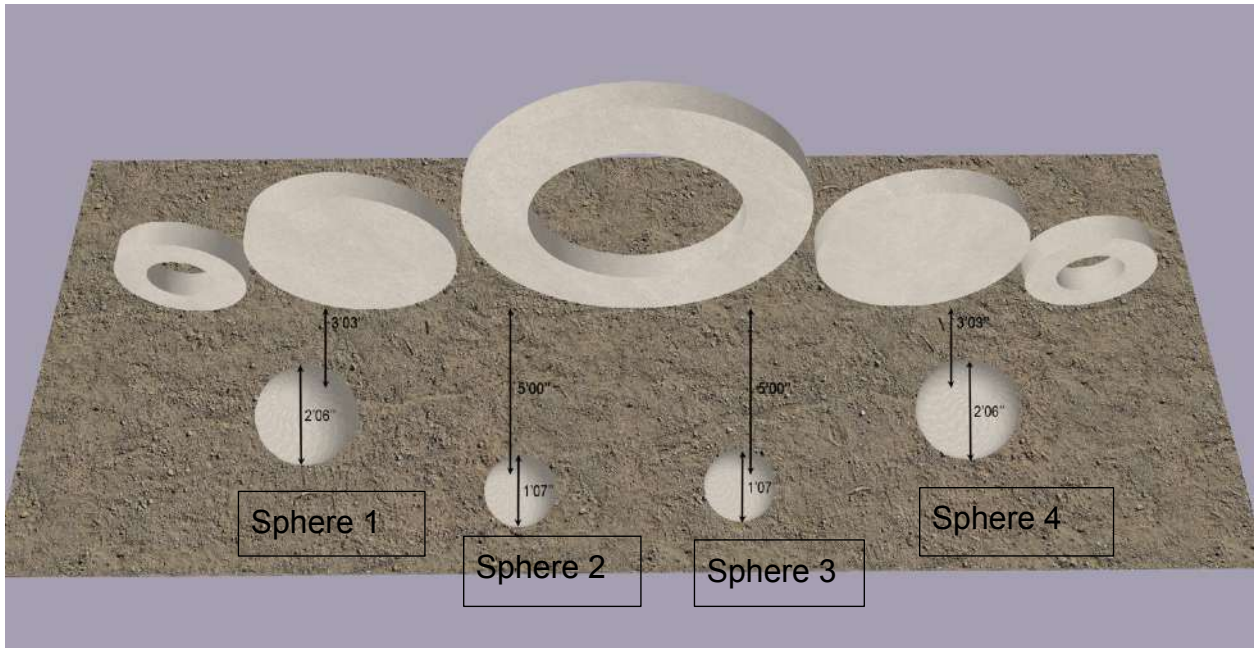


Figure 4 Spheres



Figure 5 Texture and Color

Chain

4 pieces of 5 feet 5 inches of stainless steel chains will be attached between each spheres forming a small downward curve. These chains would be attached using a O-hook sleeve anchors bolted to the side of the spheres.



Figure 4.1 chains

Typography / texts

The text “WELCOME TO KOMANDOO” will be placed along the upper half of circle number 3 with cutout stainless steel letters. The text highlighting the monumental information about Komandoo will be placed on circle number 4 in English and circle number 2 in Dhivehi. This information will also be written with stainless steel cutout letters.

- Welcome to Komandoo font: Helvetica
- Welcome to Komandoo size: 7 inches (letter height), letters extrude 2 inches.
- Text on circle 2... (to be decided)
- Text on circle 4... (to be decided)

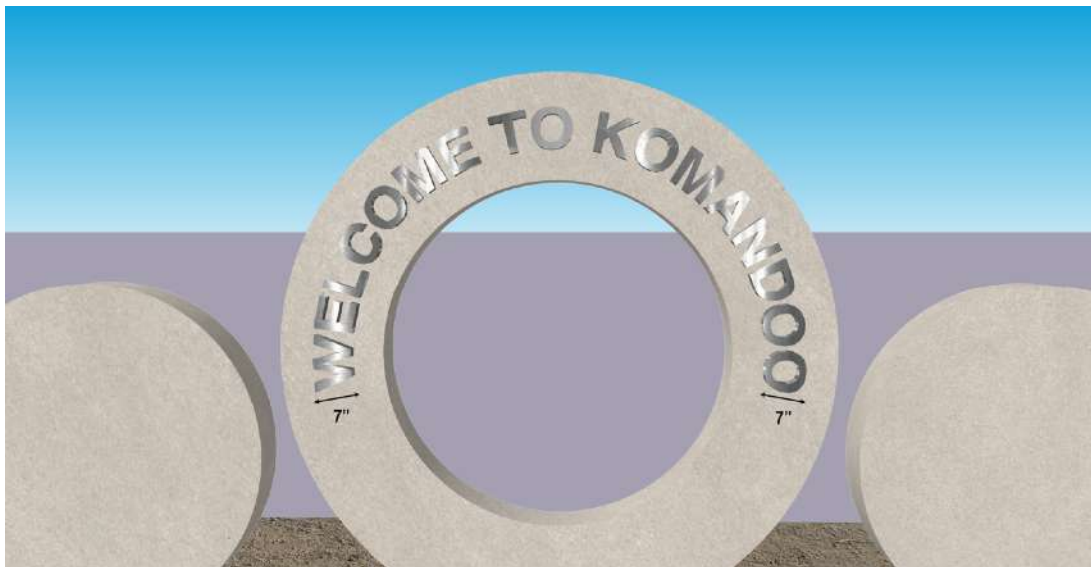


Figure 5 WELCOME TO KOMANDOO



Figure 6 THE LOBSTER ISLAND



Figure 7 EHBAIVANTHA KOMANDOO

The Lobster

The lobster representing Komandoo the Lobster Island, will be mounted in the center of circle no.3. The lobster cutout will be made of stainless-steel material with all the necessary details engraved or printed on it.

- Lobster height: 4 feet 3 inch.
- Lobster width: 6 mm



Figure 8 Lobster

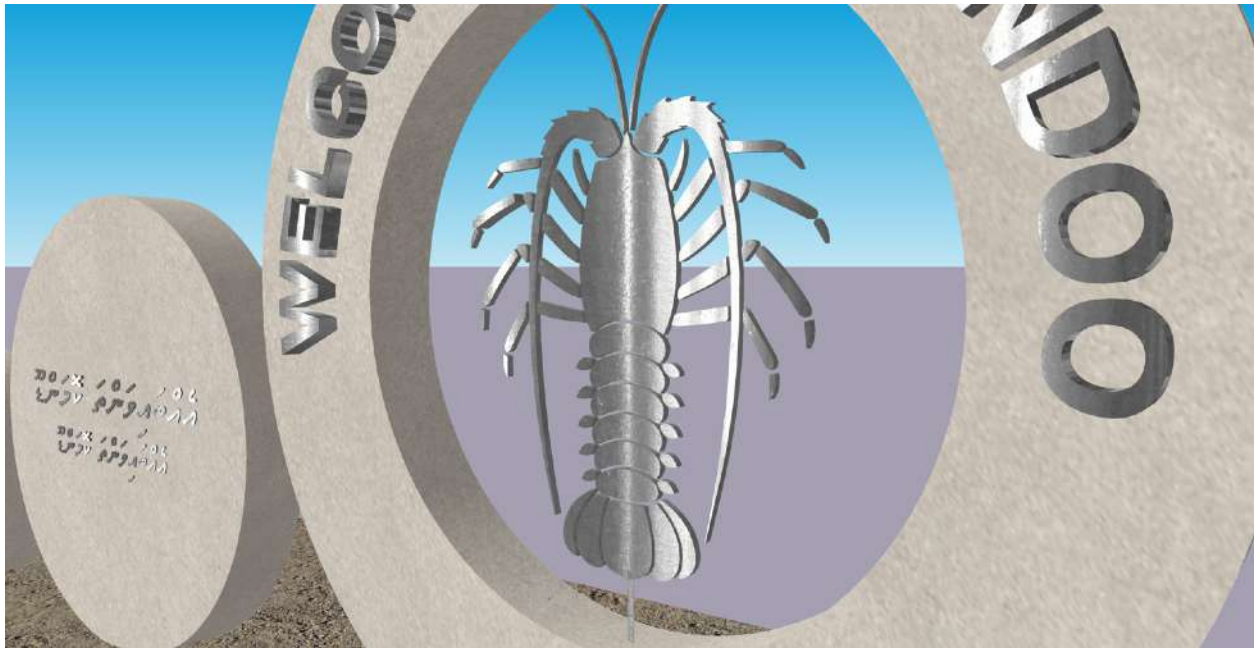


Figure 9 Lobster

Trees / Plants

- Small plants:

A row of small plants (2-2.5 feet tall) will be planted right in front of the circles. This row of plants can consist of 3-4 varieties of low maintenance plants.



Figure 10 Small Plants



Figure 11 Small Plants

- Back trees:
As shown in the sample figure below, this monument consists of 4 trees (pine trees) planted right behind the circles.

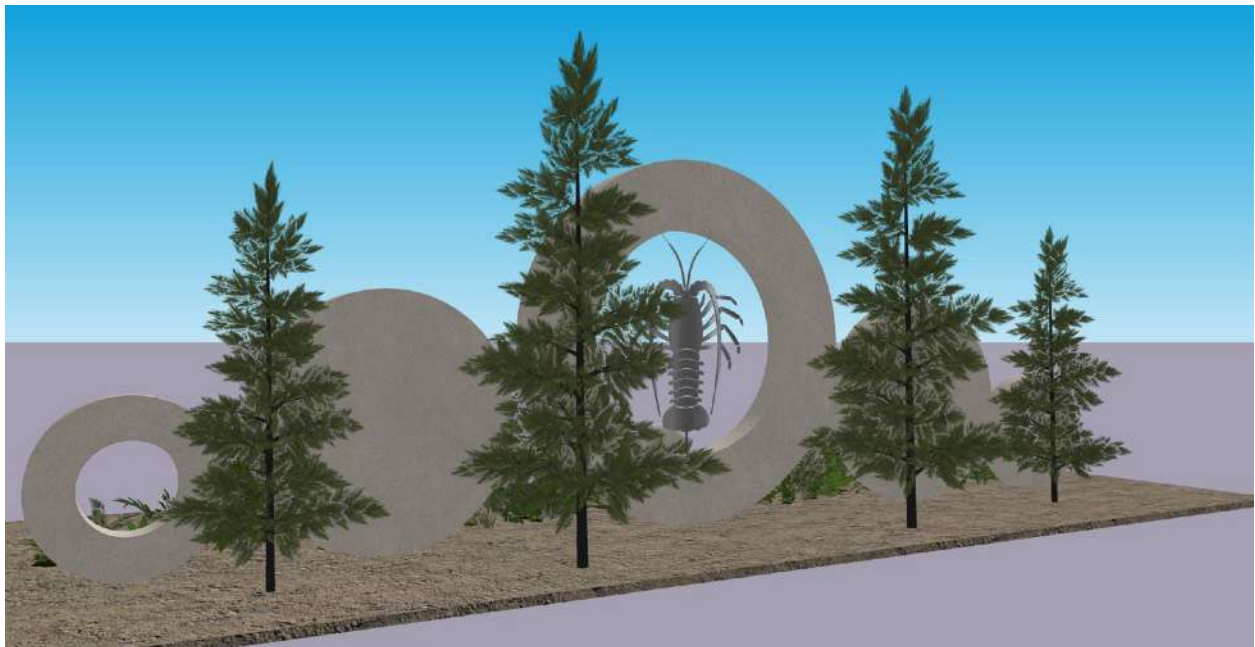


Figure 12 Trees



Figure 13 Trees

- Synthetic/real grass carpet:
The spheres will be placed on the grass carpet measuring 5 feet in width and 27 feet in length, in front of the circles.



Figure 14 Grass

Pebbles

The area (3 feet width, 27 feet length) starting from the trees up to the grass carpet will be filled with pebbles. These pebbles will cover the ground under the circles and around the row of plants as well.



Figure 15 Pebbles

Lights

- LED flood lights
 - Light 1 (warm white), behind sphere 1, spotting on circle 1
 - Light 2 (warm white), behind sphere 1, spotting on circle 2
 - Light 3 (soft white), behind sphere 2, spotting on circle 3
 - Light 4 (soft white), behind sphere 3, spotting on circle 3
 - Light 5 (warm white), behind sphere 4, spotting on circle 4
 - Light 6 (warm white), behind sphere 4, spotting on circle 5



Figure 16 Flood lights

- Plinth lights / in-ground well lights
-

For spheres number 1 and 4 there will be three plinth lights allocated and for spheres 2 and 3 there will be 2 plinth lights allocated. These lights will be placed in the ground in front of each sphere, illuminating the light on the lower half of the sphere.

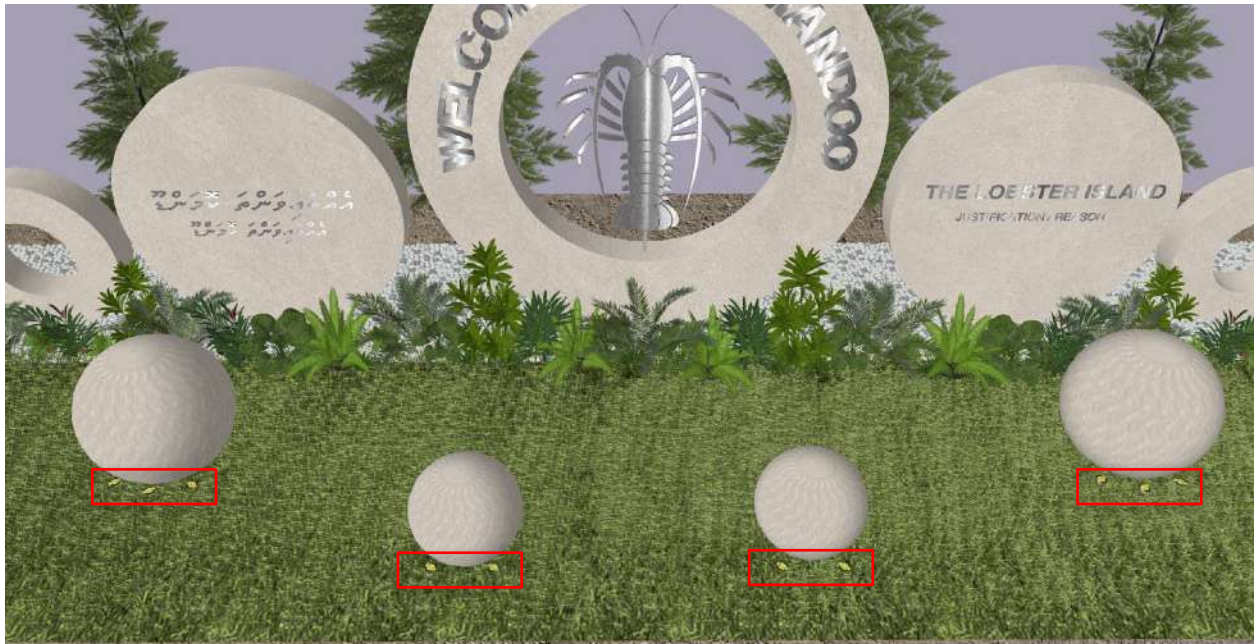
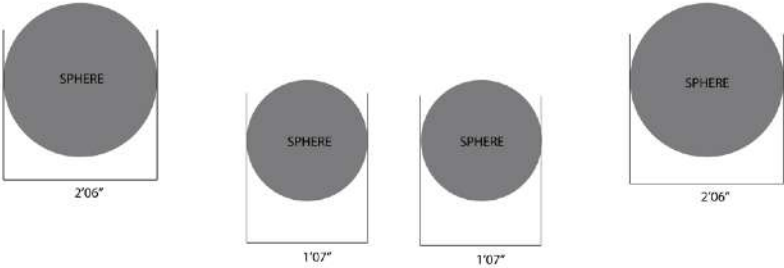
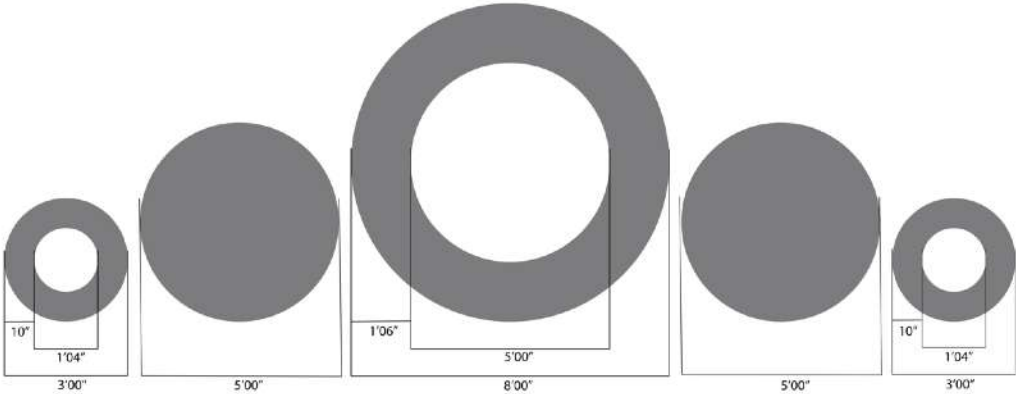


Figure 17 Plinth lights

GRAYSCALE

GRAYSCALE



Models

