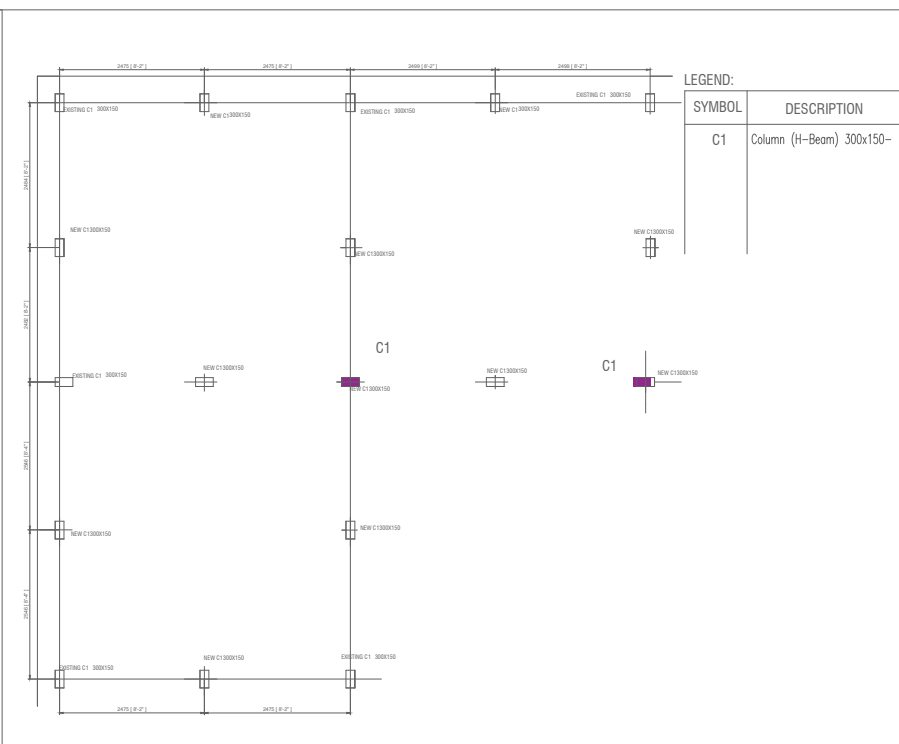
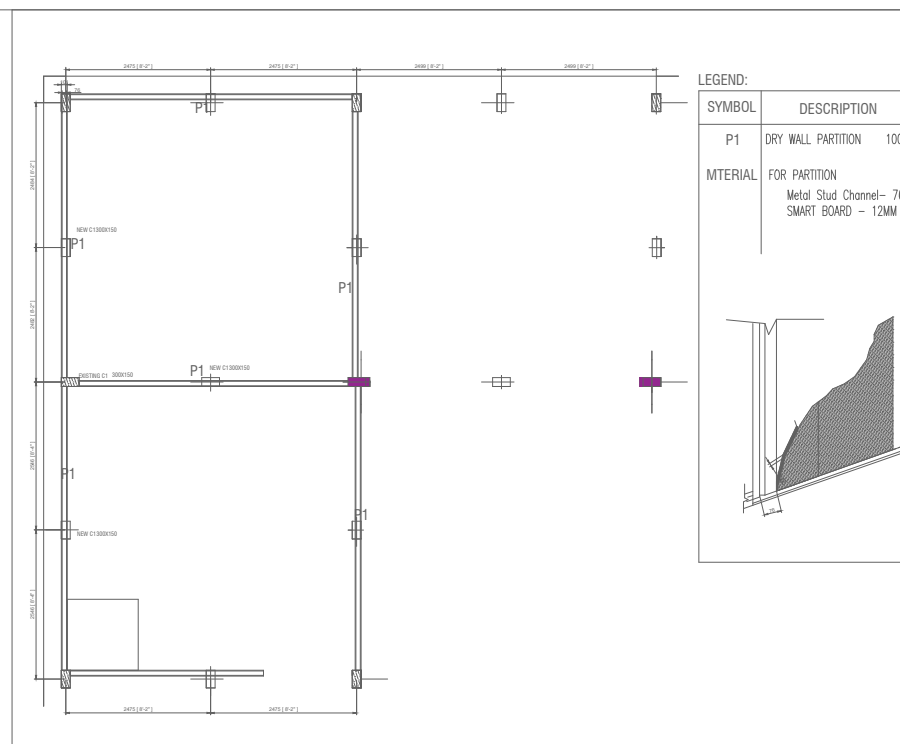


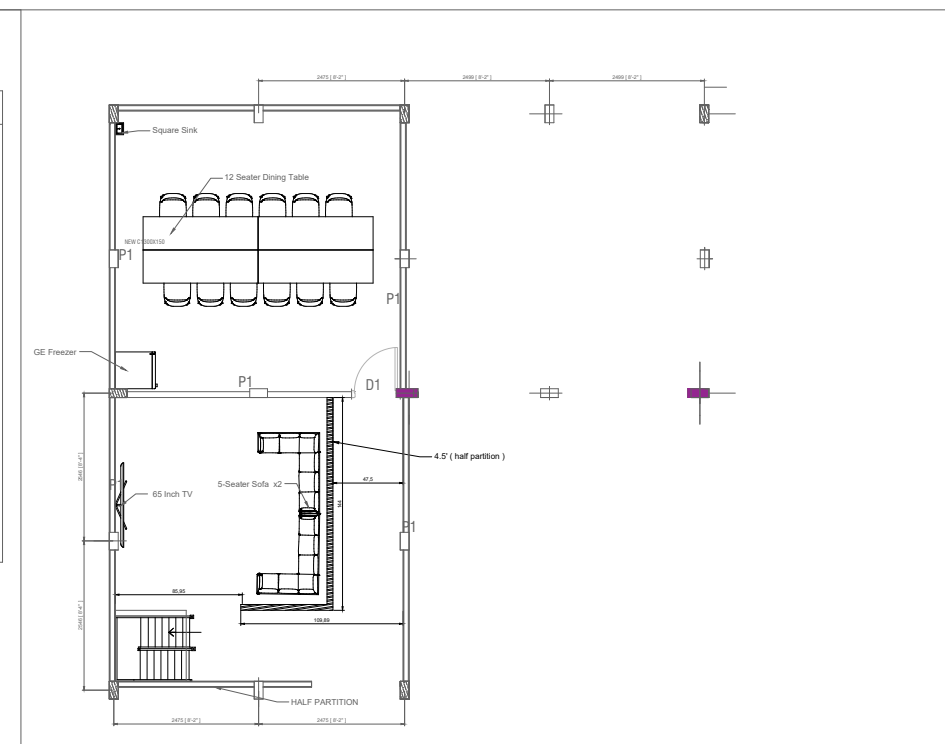
FOOTING LAYOUT



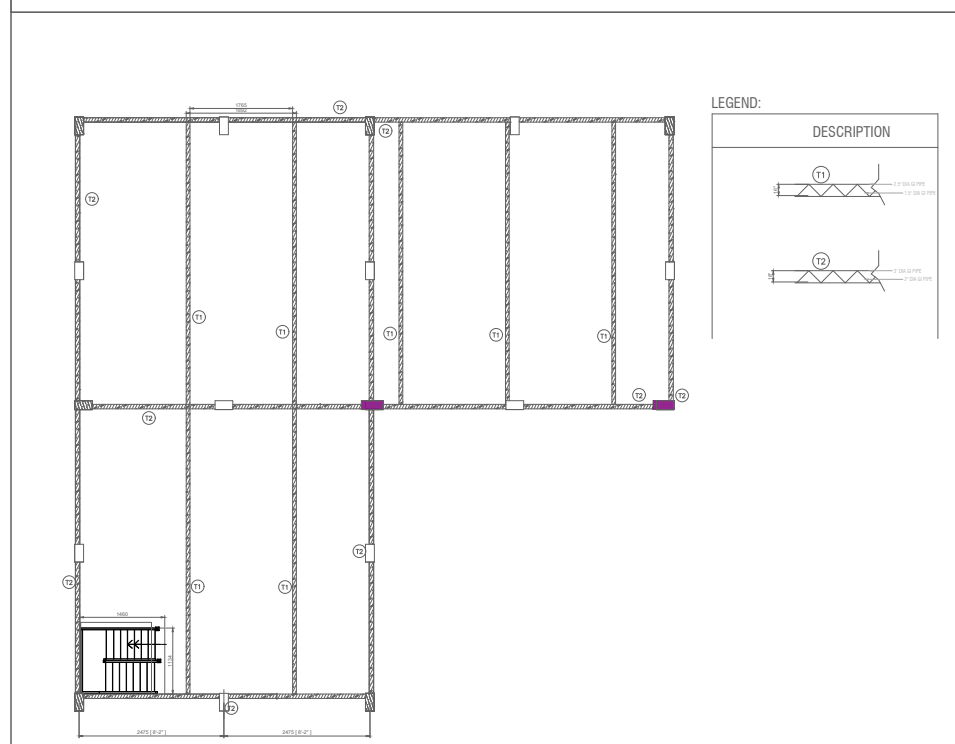
COLUMN LAYOUT



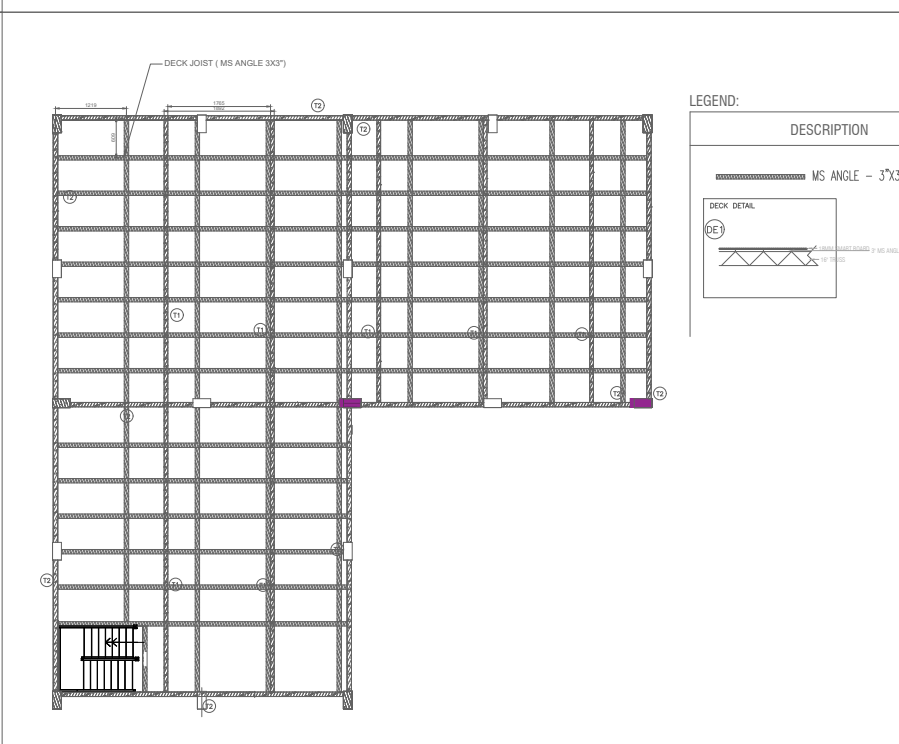
GROUND FLOOR PARTITION LAYOUT



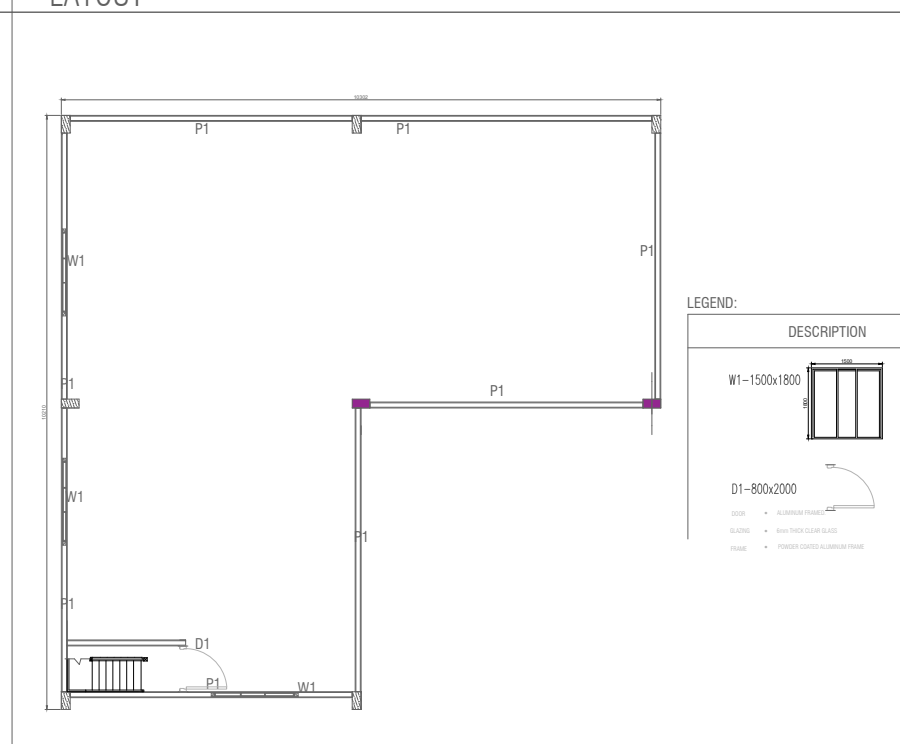
GROUND FLOOR PLAN LAYOUT



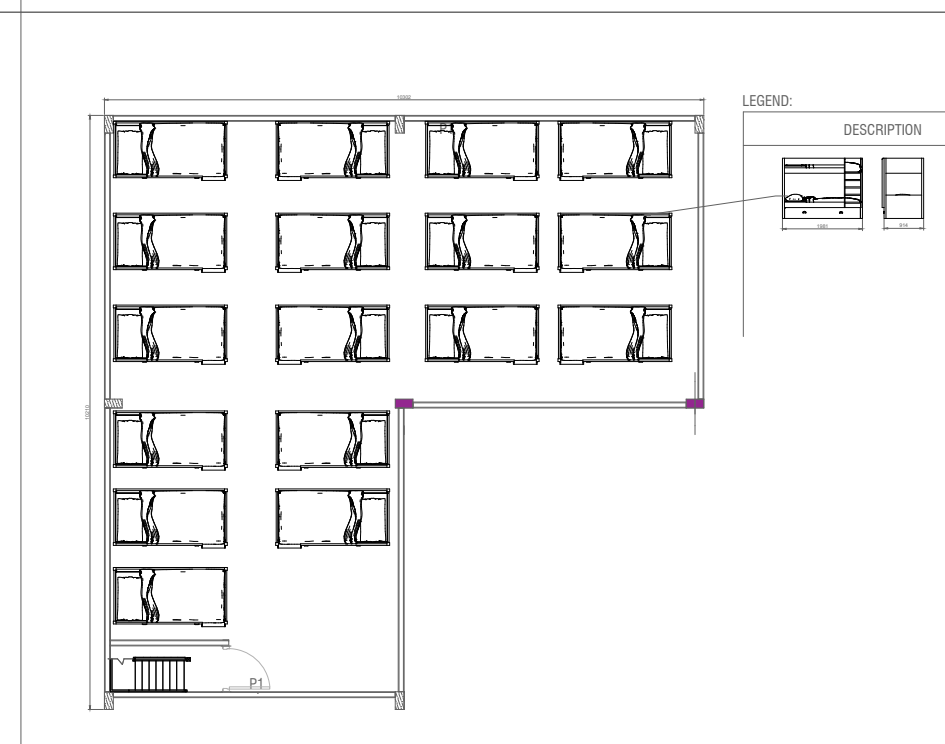
FLOOR DECK SUPPORT TRUSS LAYOUT



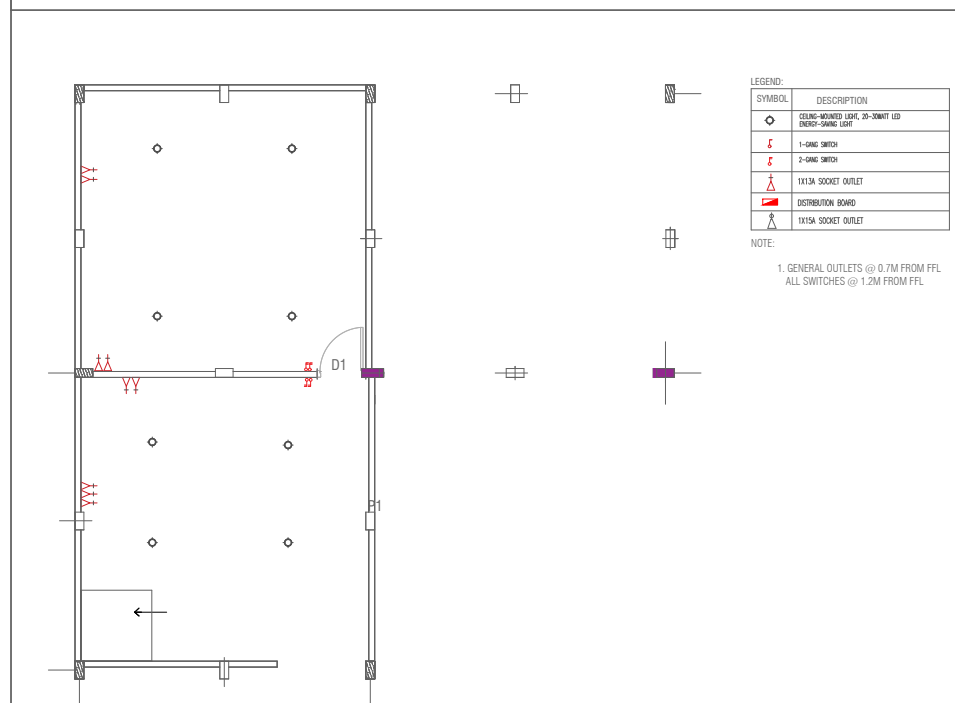
FLOOR DECK JOIST LAYOUT



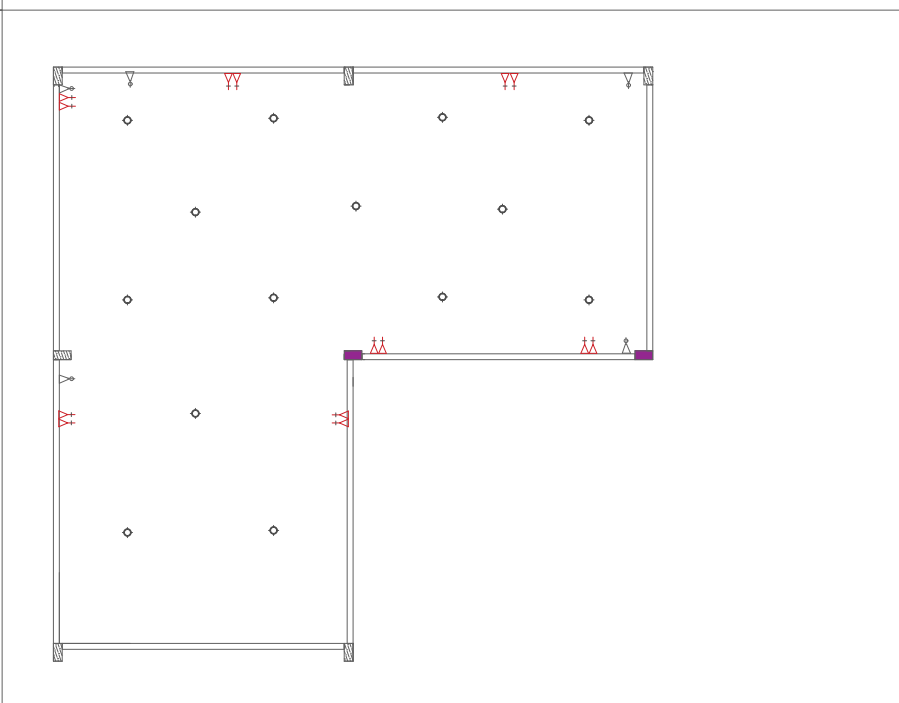
FIRST FLOOR PARTITION LAYOUT



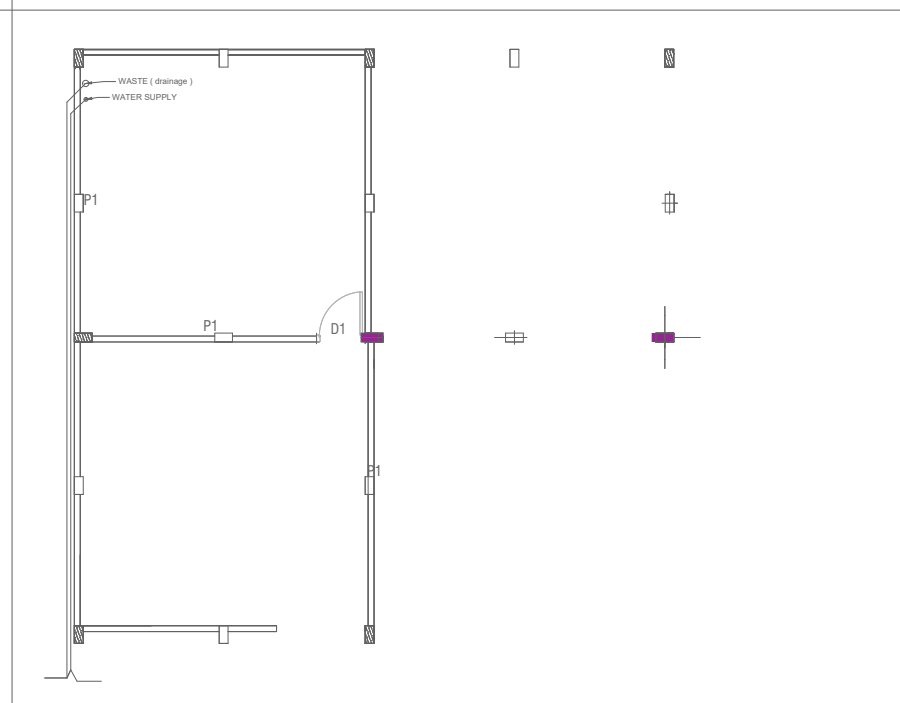
FIRST FLOOR PLAN LAYOUT



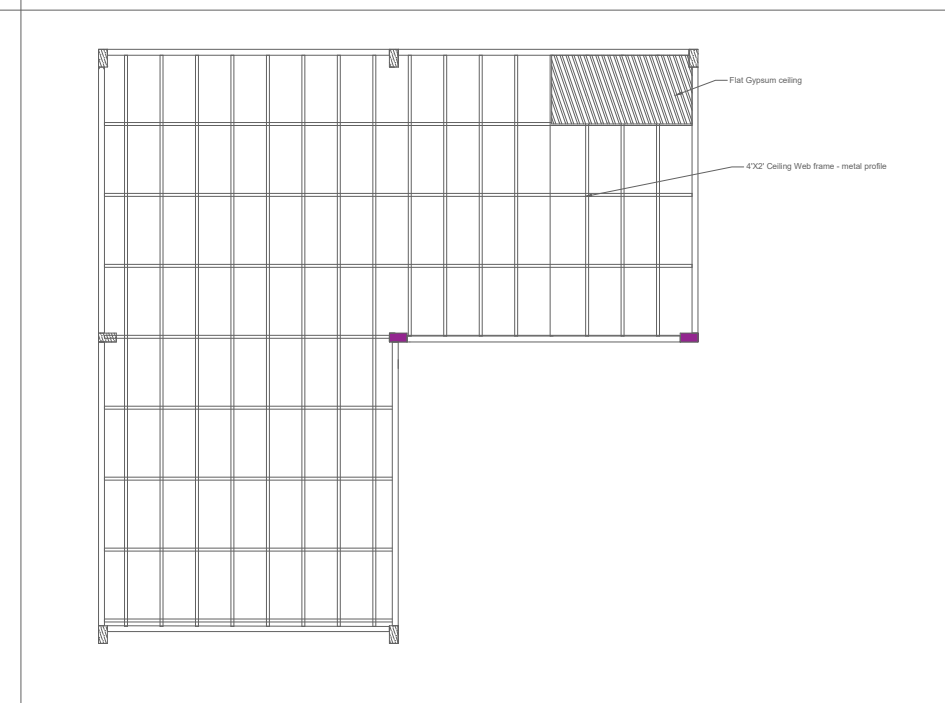
GROUND FLOOR LIGHTING / POWER PLAN LAYOUT



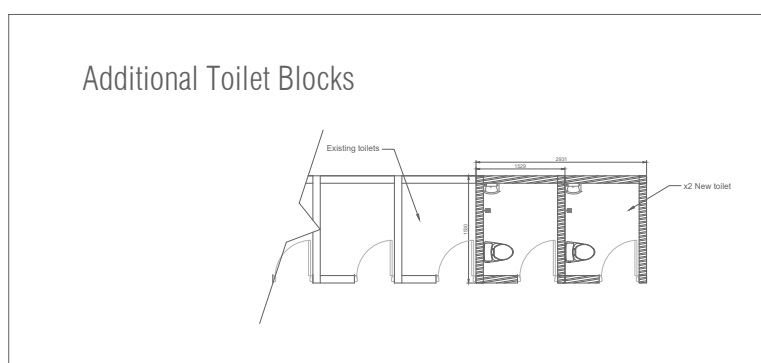
FIRST FLOOR LIGHTING / POWER PLAN LAYOUT

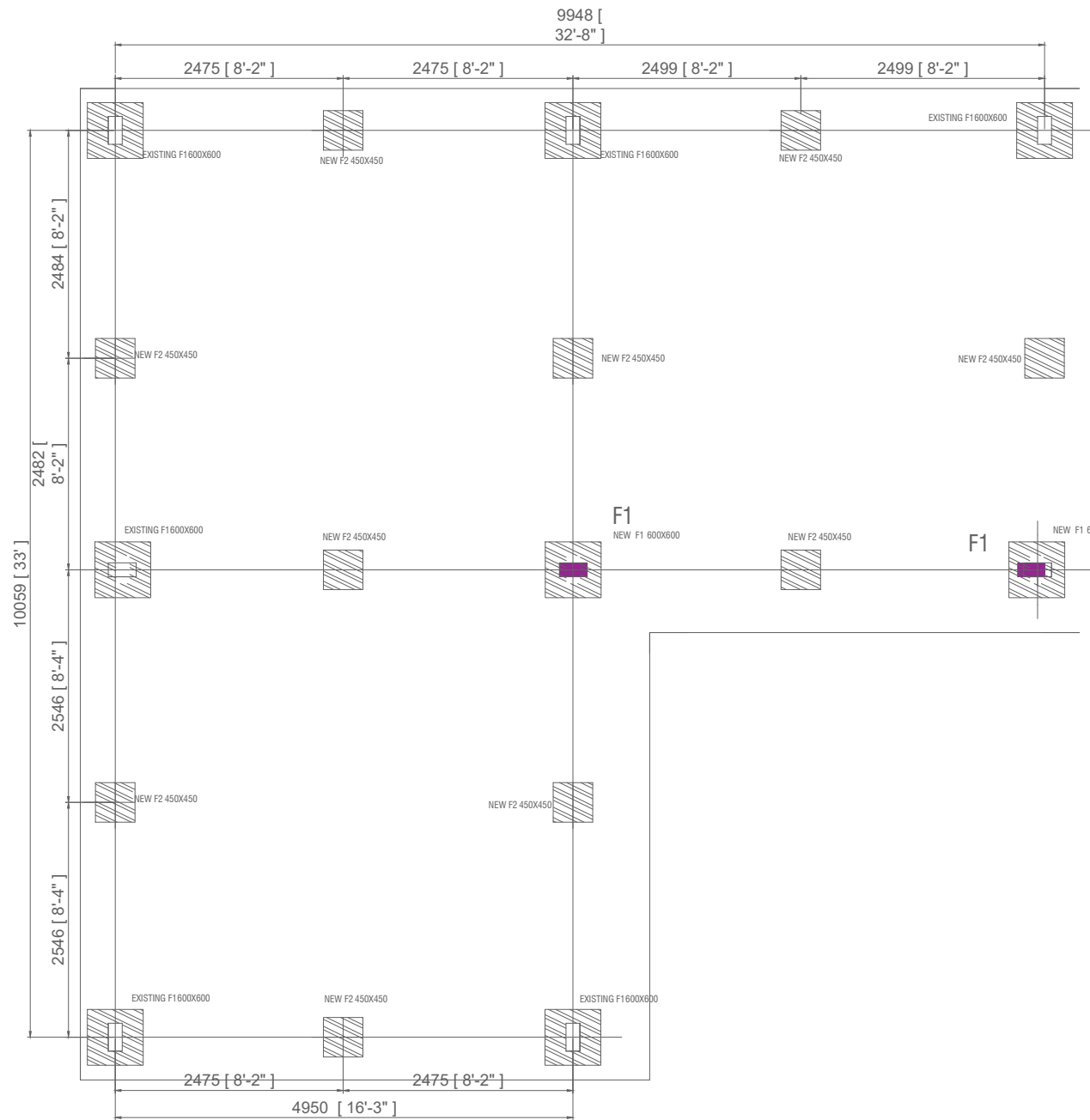


GROUND FLOOR WATER SUPPLY AND PLUMBING



FIRST FLOOR CEILING PLAN

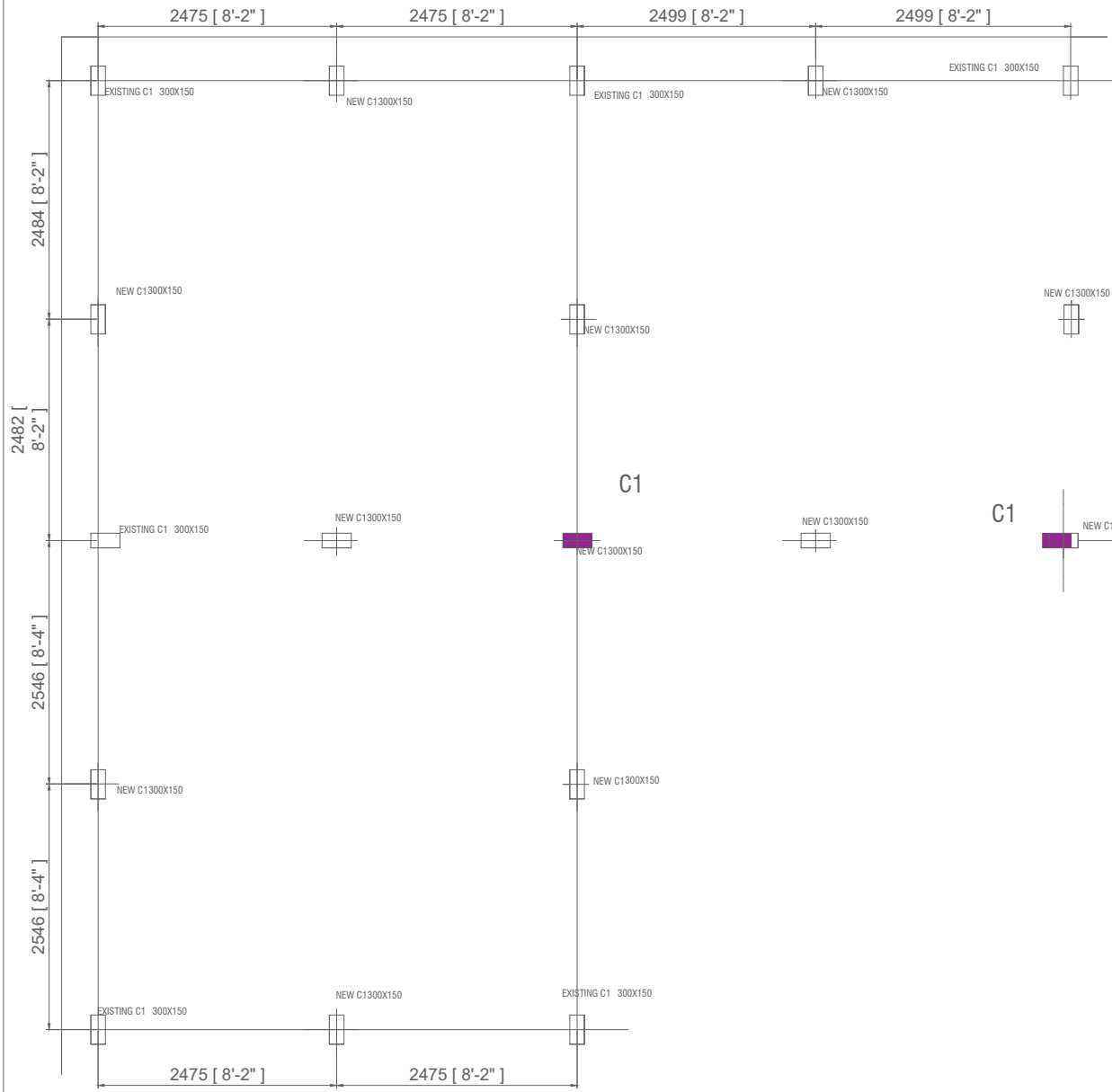




LEGEND:

SYMBOL	DESCRIPTION
F1	footings- 600x600
F2	footings- 450x450

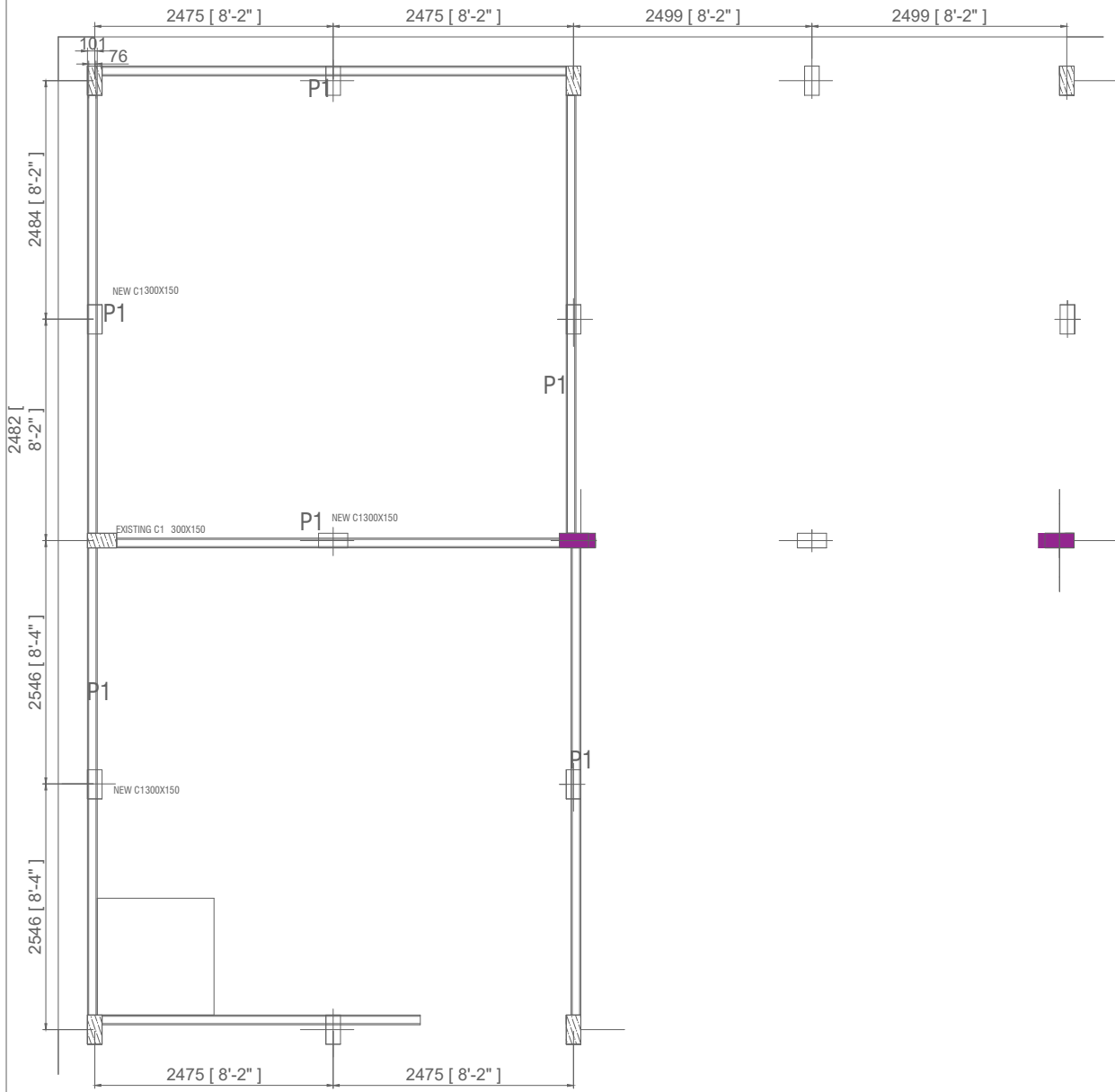
# FOOTING LAYOUT



LEGEND:

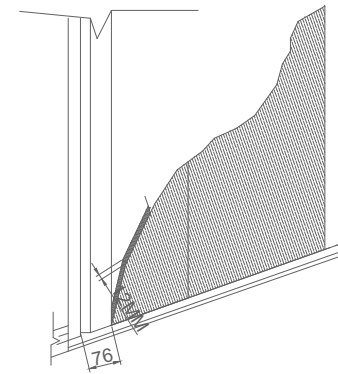
SYMBOL	DESCRIPTION
C1	Column (H-Beam) 300x150-

# COLUMN LAYOUT

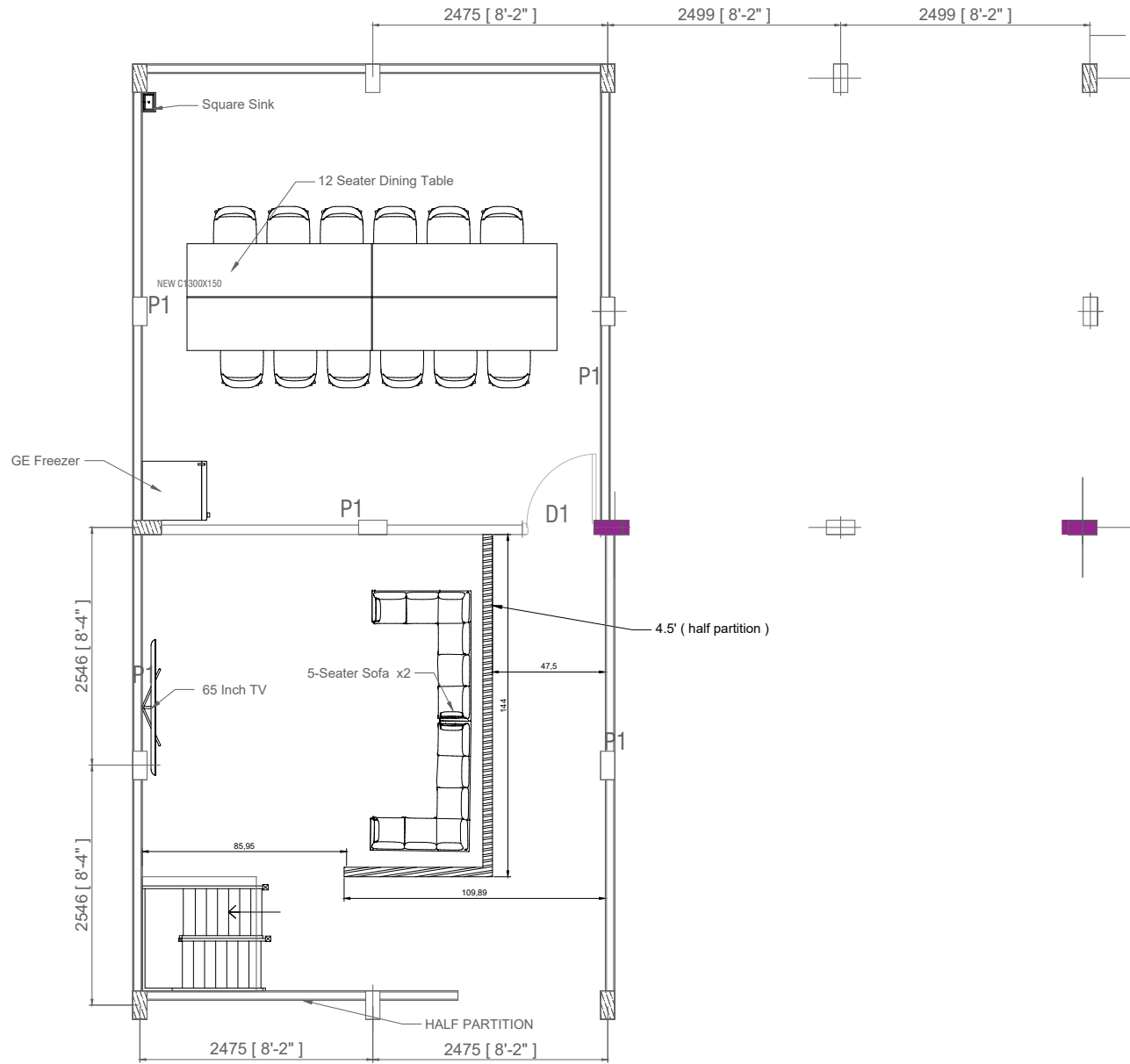


LEGEND:

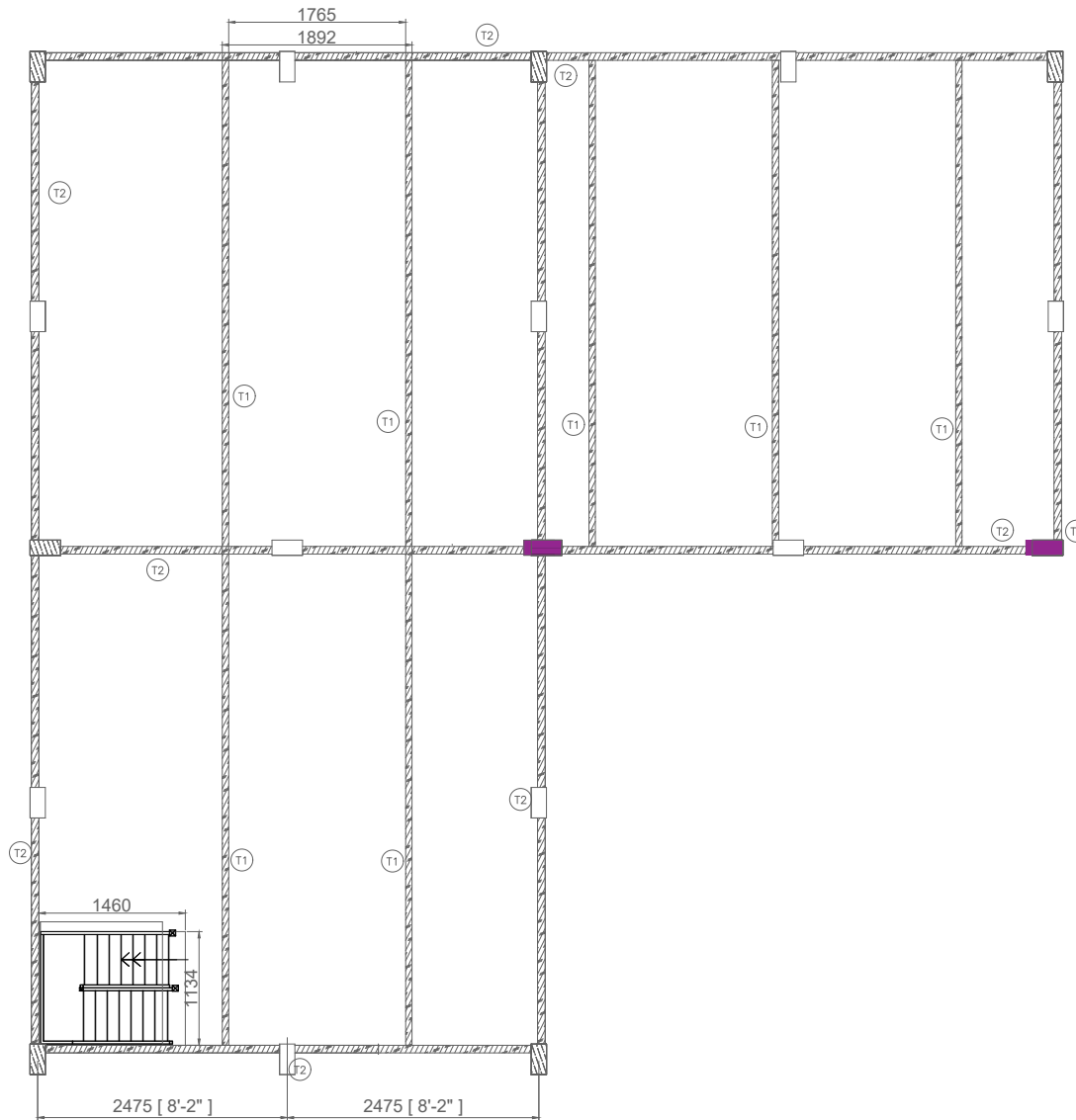
SYMBOL	DESCRIPTION
P1	DRY WALL PARTITION 100mm
MATERIAL	FOR PARTITION Metal Stud Channel- 76X25 SMART BOARD - 12MM



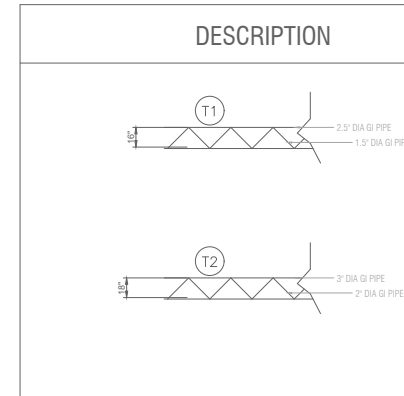
# GROUND FLOOR PARTITION LAYOUT



GROUND FLOOR PLAN LAYOUT

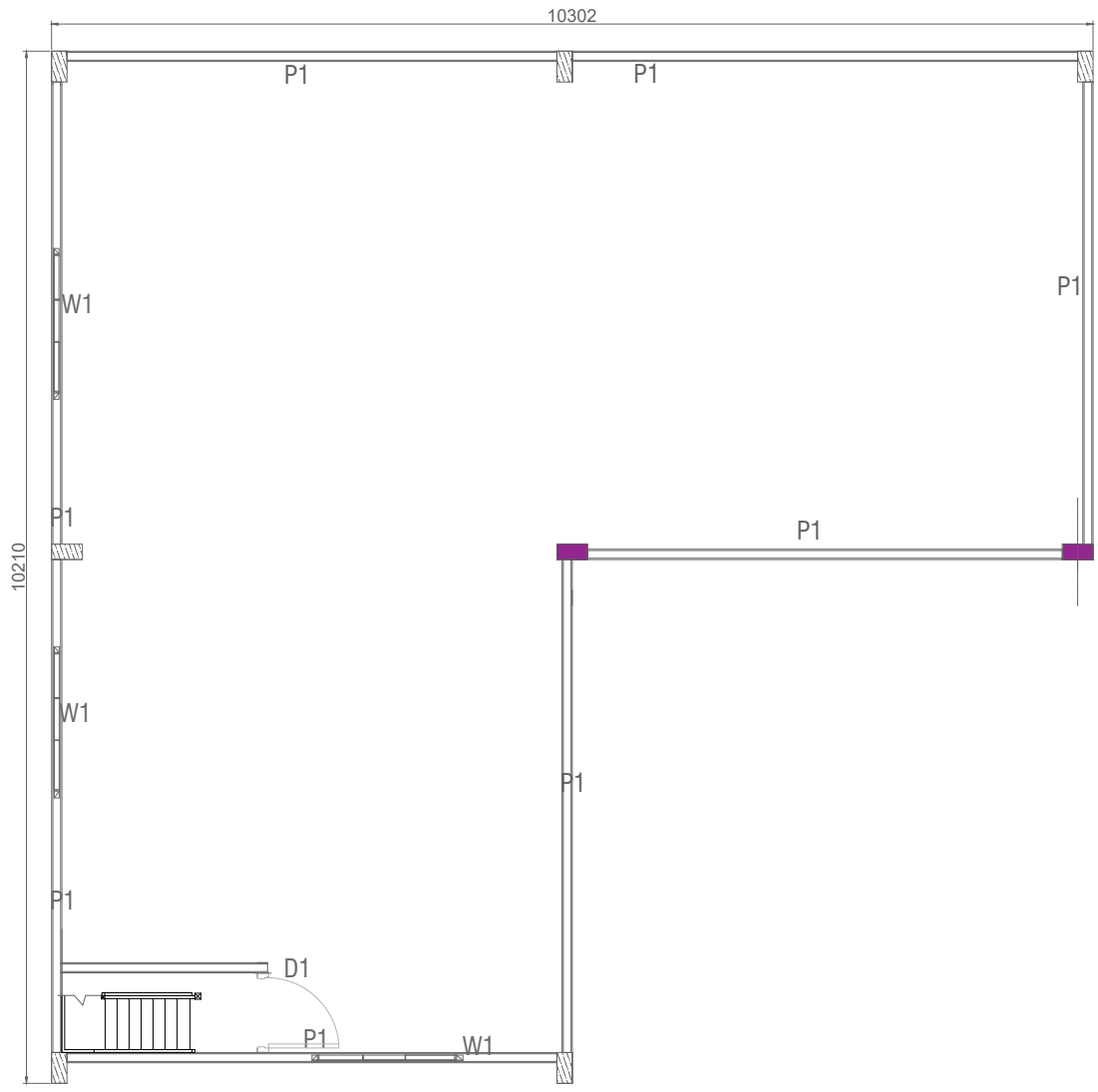


LEGEND:



FLOOR DECK SUPPORT TRUSS  
LAYOUT



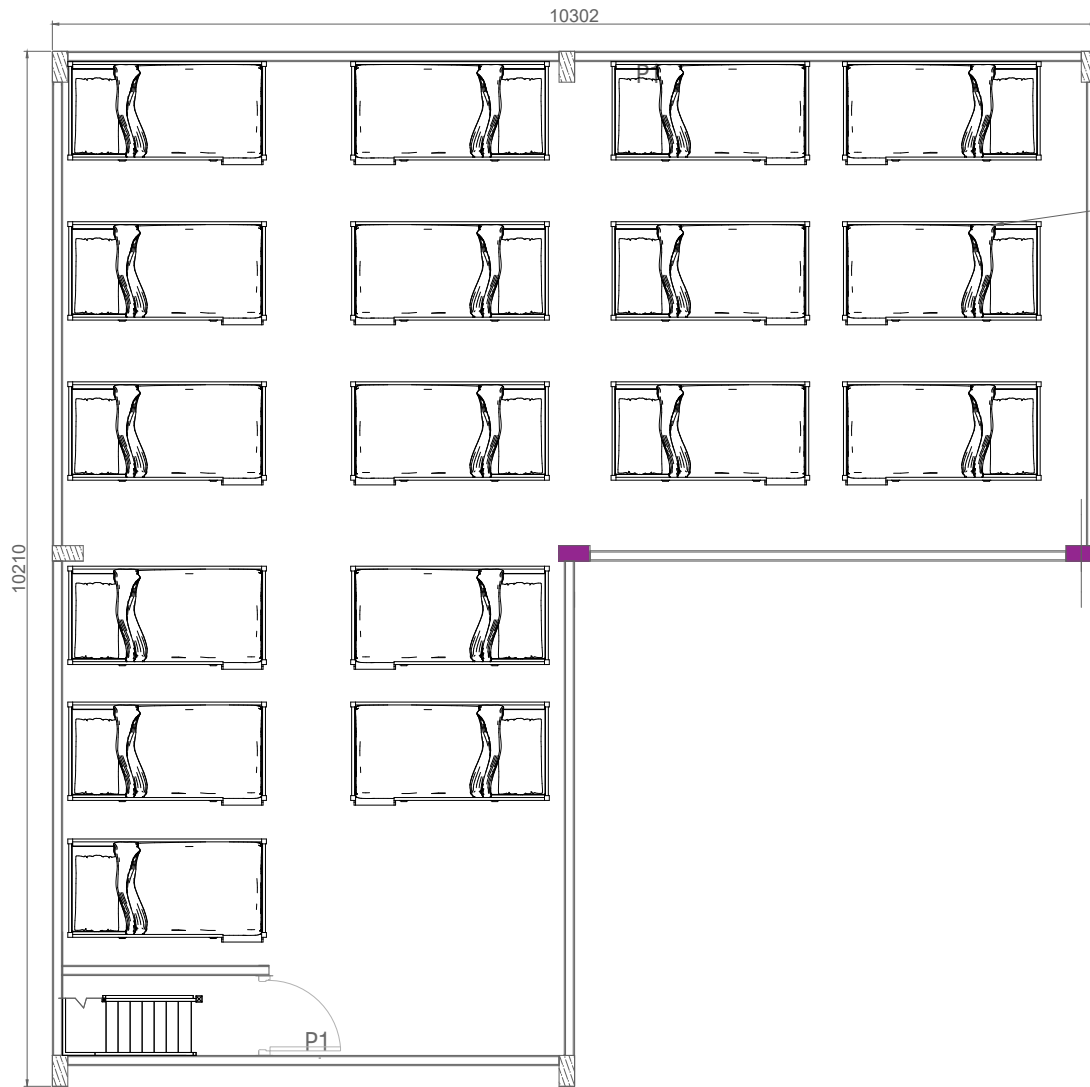


LEGEND:

DESCRIPTION	
W1-1500x1800	
D1-800x2000	
DOOR	<ul style="list-style-type: none"> <li>• ALUMINUM FRAMED</li> </ul>
GLAZING	<ul style="list-style-type: none"> <li>• 6mm THICK CLEAR GLASS</li> </ul>
FRAME	<ul style="list-style-type: none"> <li>• POWDER COATED ALUMINUM FRAME</li> </ul>

FIRST FLOOR PARTITION LAYOUT

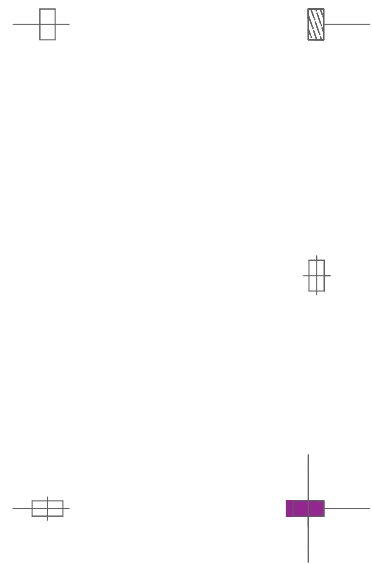
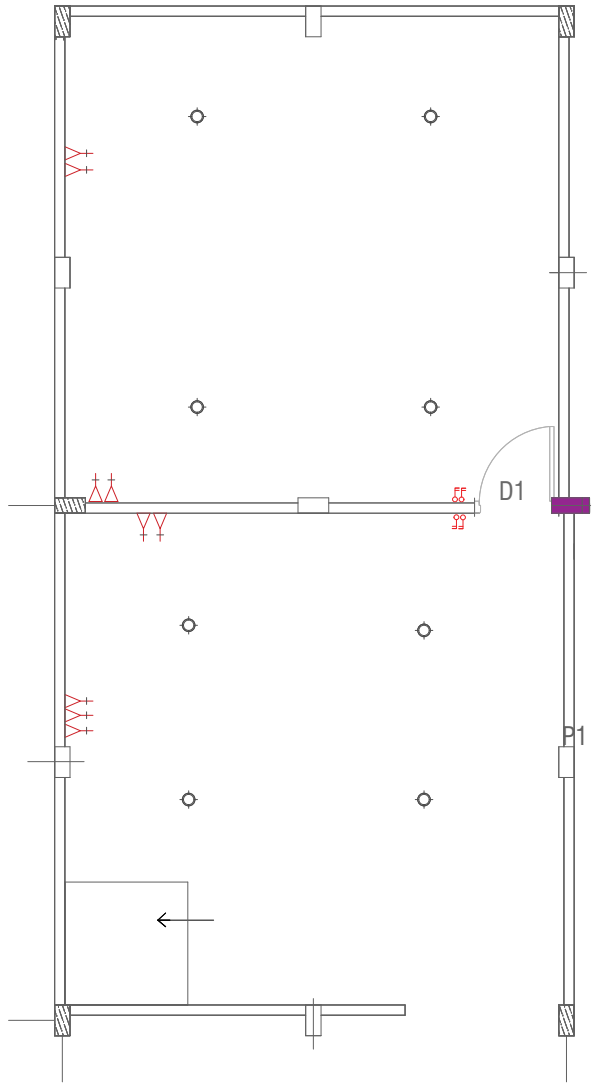




LEGEND:

DESCRIPTION	
1981	914

FIRST FLOOR PLAN LAYOUT



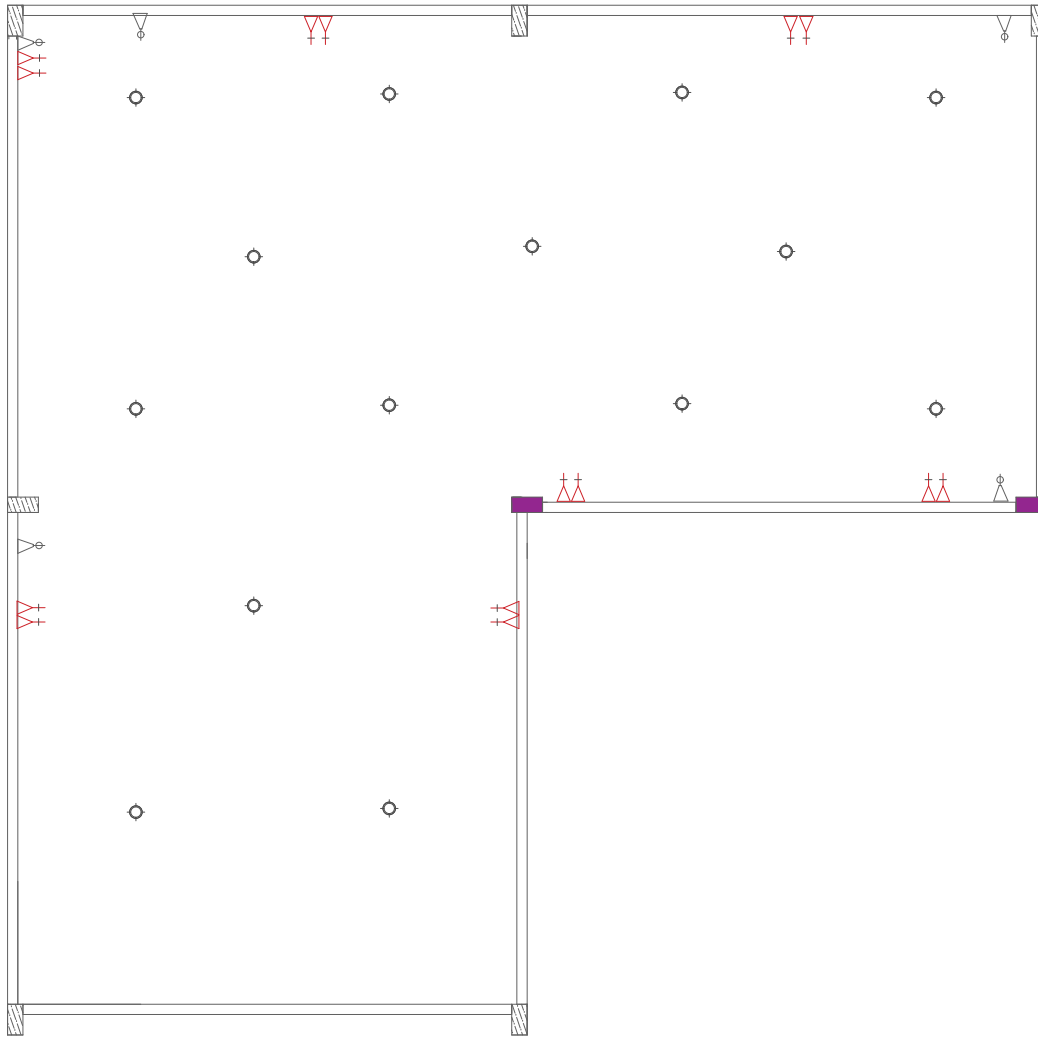
LEGEND:

SYMBOL	DESCRIPTION
	CEILING-MOUNTED LIGHT, 20-30WATT LED ENERGY-SAVING LIGHT
	1-GANG SWITCH
	2-GANG SWITCH
	1X13A SOCKET OUTLET
	DISTRIBUTION BOARD
	1X15A SOCKET OUTLET

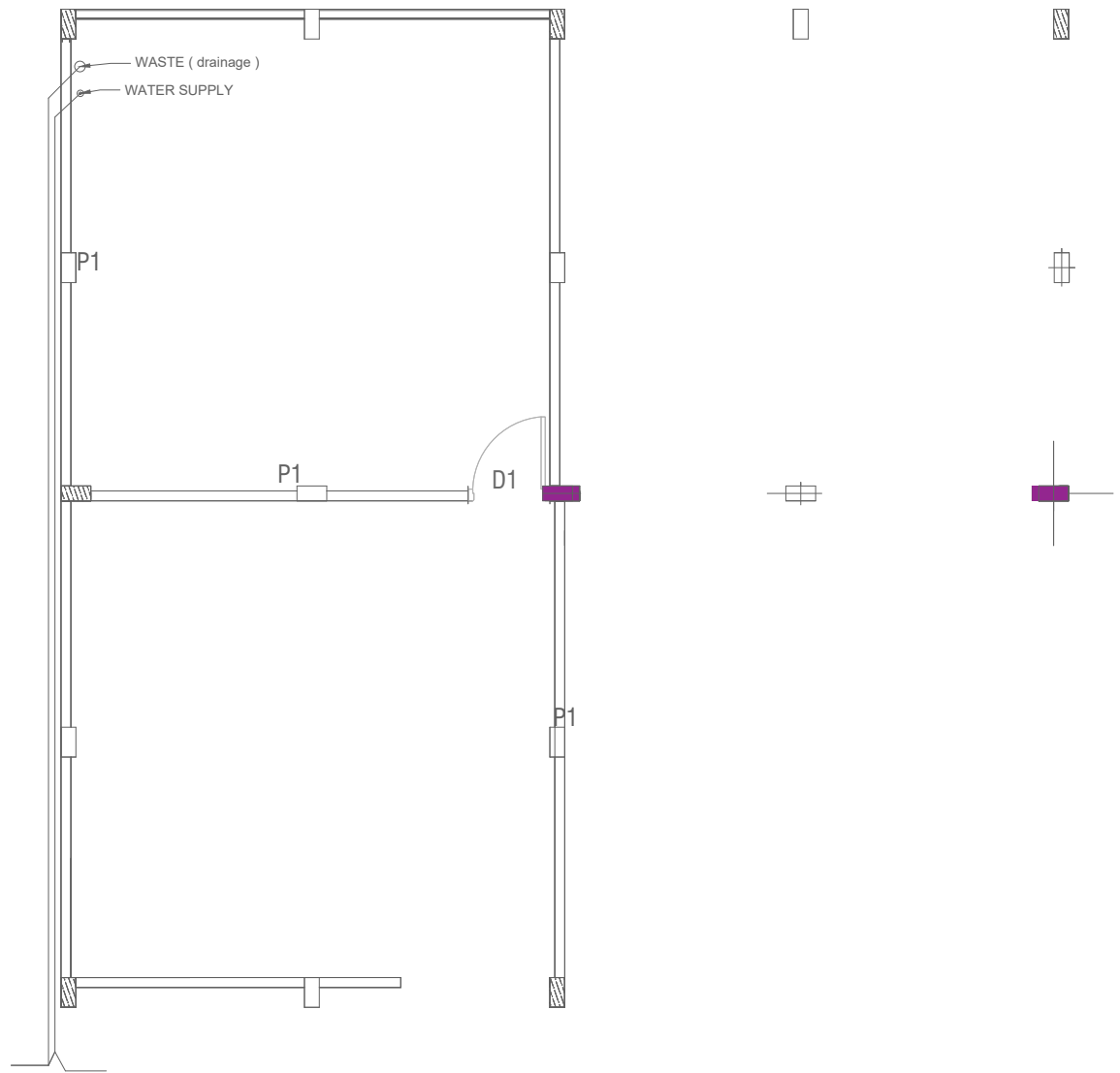
NOTE:

1. GENERAL OUTLETS @ 0.7M FROM FFL  
ALL SWITCHES @ 1.2M FROM FFL

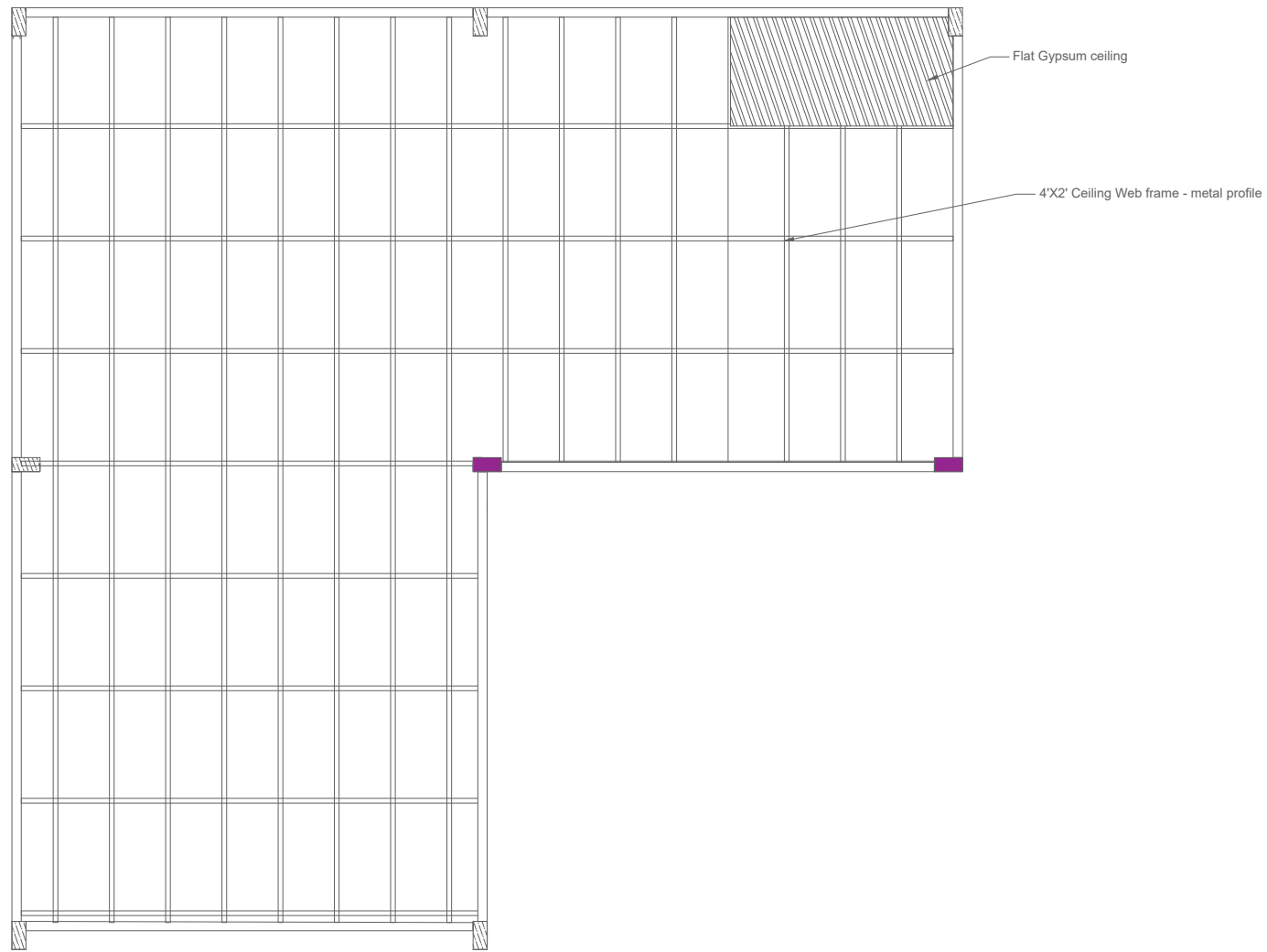
## GROUND FLOOR LIGHTING / POWER PLAN LAYOUT



FIRST FLOOR LIGHTING / POWER  
PLAN LAYOUT



GROUND FLOOR WATER SUPPLY  
AND PLUMBING



FIRST FLOOR CEILING PLAN

# Additional Toilet Blocks

