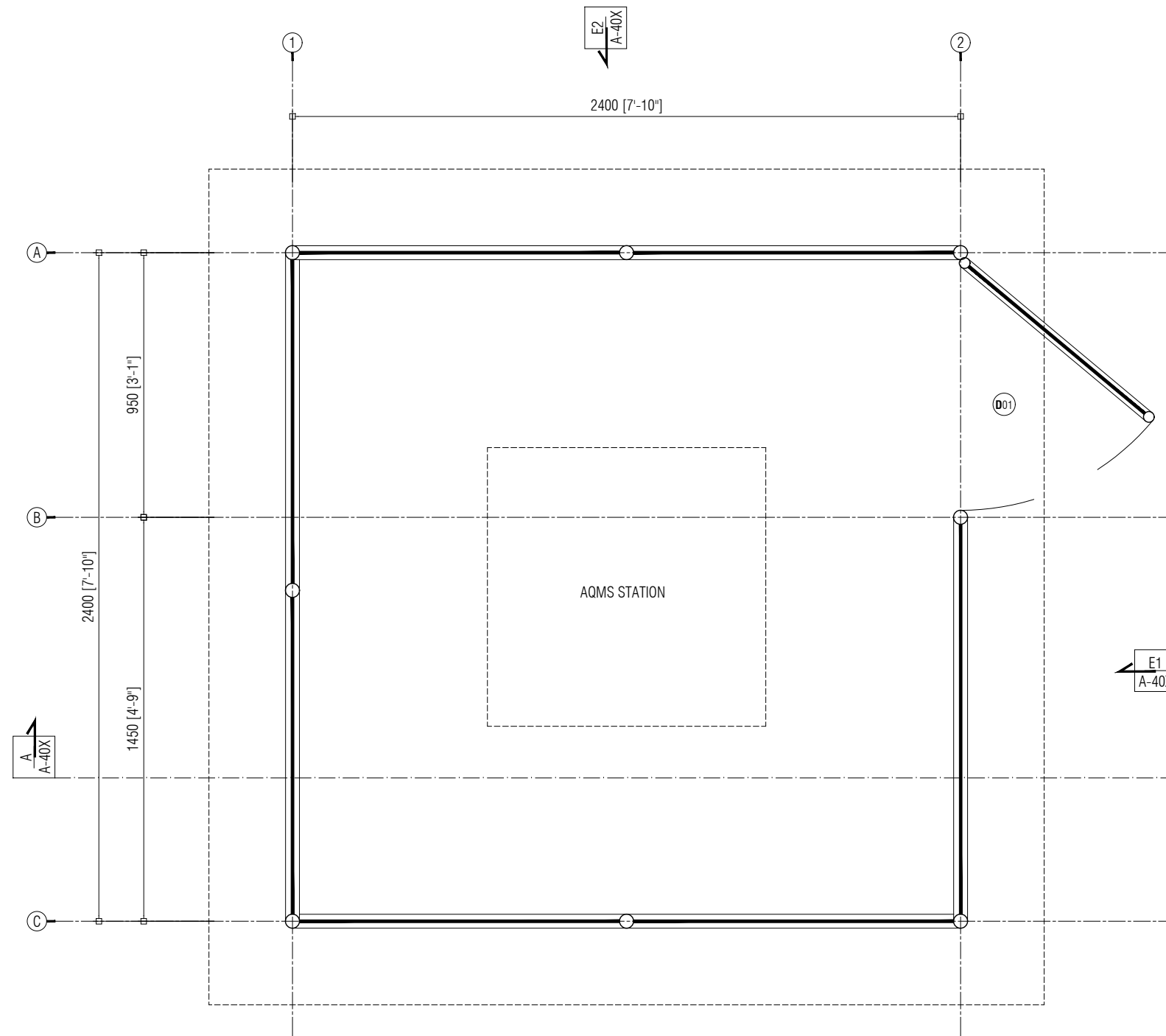


AQMS STATION SHED

DETAIL DRAWINGS

APRIL 2026





GROUND FLOOR PLAN

SCALE 1:20

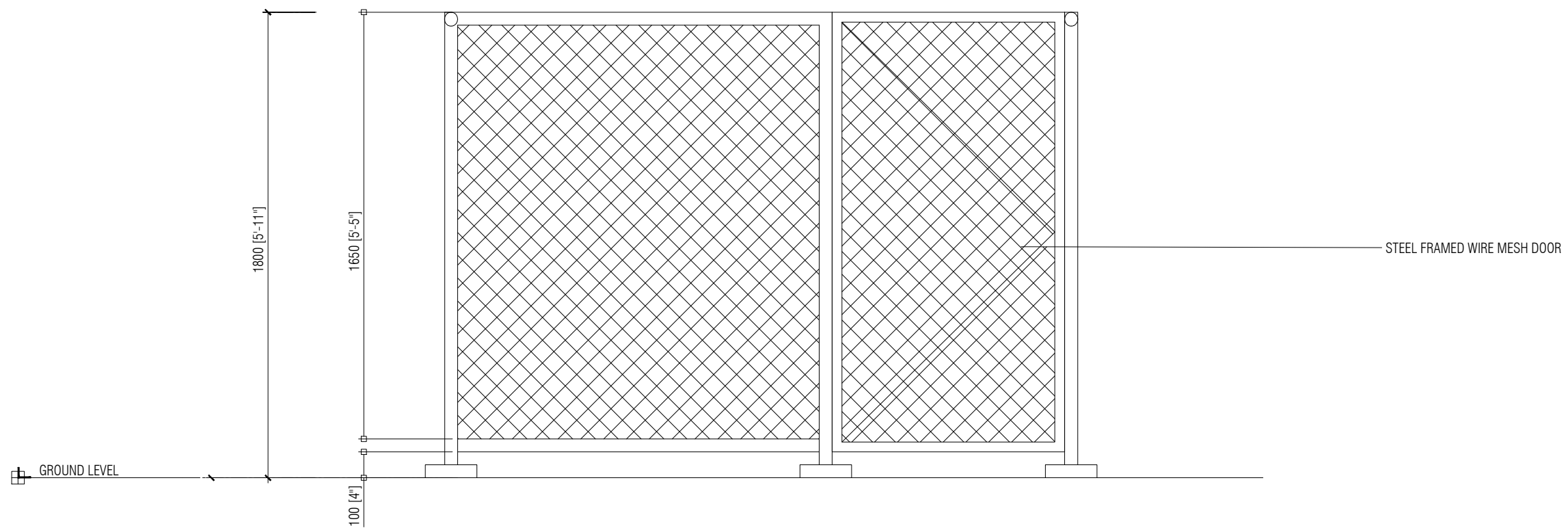


SHEET CONTENT

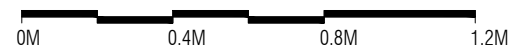
GROUND FLOOR PLAN

SHEET NO.

A 01



ELEVATION - E1
SCALE 1:20



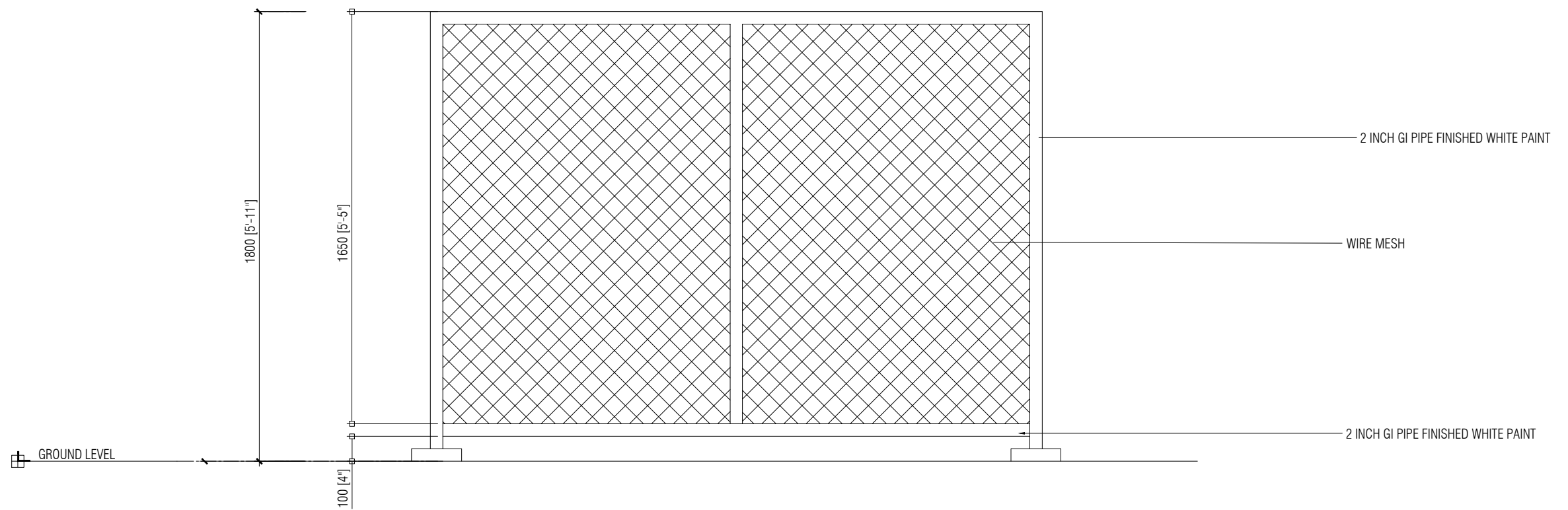
SHEET CONTENT

ELEVATION - E1

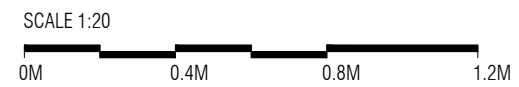
SHEET NO.

A 02





ELEVATION - E2

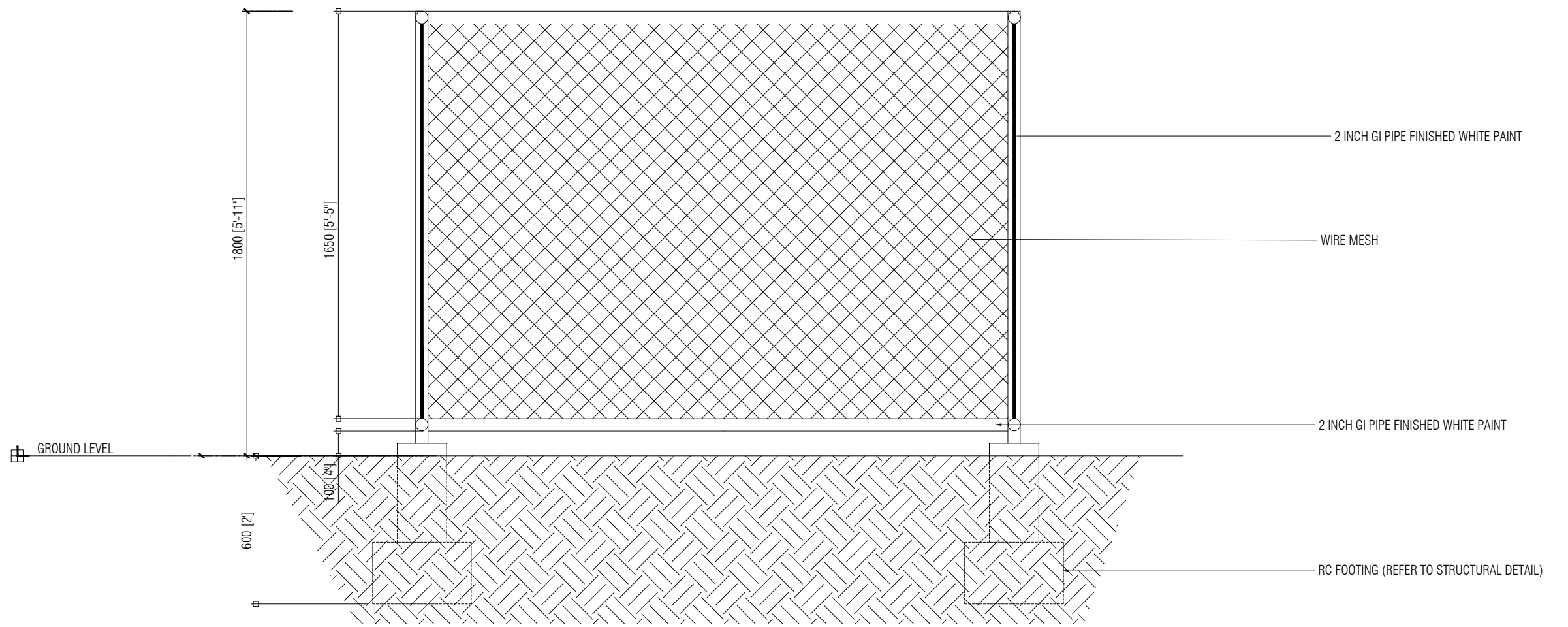


SHEET CONTENT
ELEVATION - E2

SHEET NO.

A 03





SECTION - A
SCALE 1:20

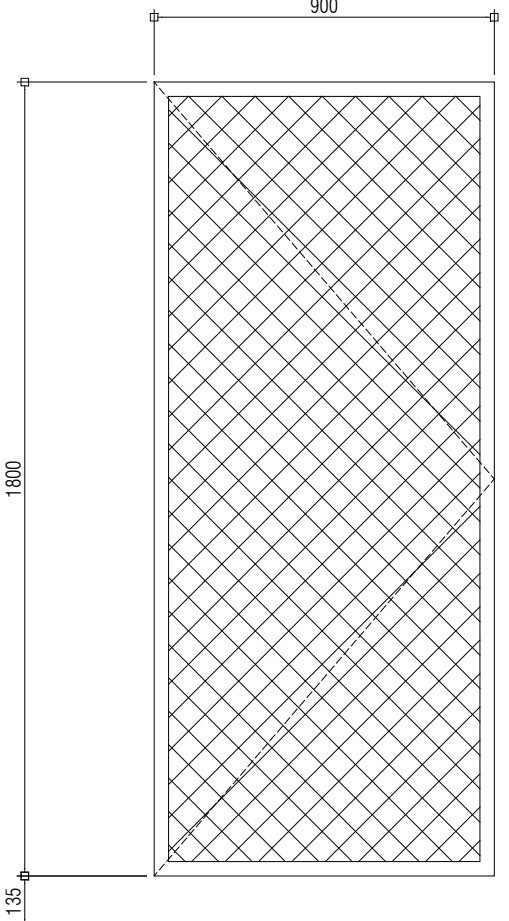


SHEET CONTENT
SECTION - A

SHEET NO.

A 04



DOOR/ WINDOW NAME	D01
ELEVATION	 <p>The drawing shows a vertical door with a wire mesh panel. The mesh panel is 900 units wide and 1800 units high. The entire door assembly is 1.35 units high from the finished floor level (FFL) to the top of the frame.</p>
FFL	
DOOR	<ul style="list-style-type: none"> ● METAL FRAMED DOOR
FRAME	<ul style="list-style-type: none"> ● 1.5 INCH GI PIPE FRAME
HARDWARE	<ul style="list-style-type: none"> ● 1NO. OPENABLE DOOR PANEL WITH WIRE MESH ● 4NOS. HINGES ● 1NO. LOCKSET WITH HANDLE
REMARKS	<ul style="list-style-type: none"> ● FINISHED WITH SELECTED PAINT

DOOR SCHEDULE

SCALE NTS



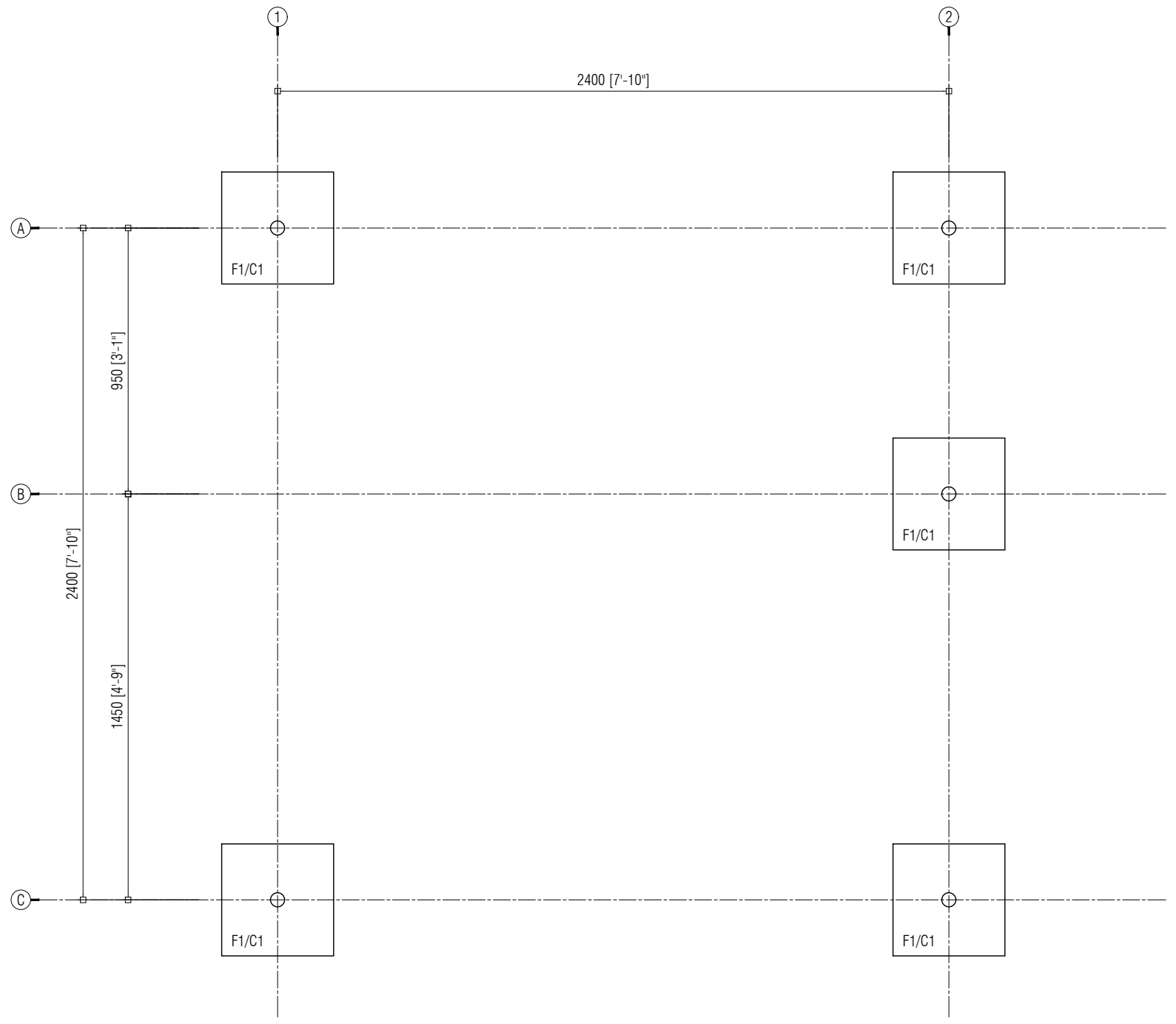
SHEET CONTENT

DOOR SCHEDULE

SHEET NO.

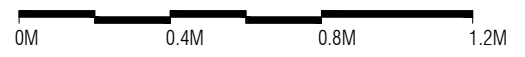
A 05





FOUNDATION PLAN

SCALE 1:20

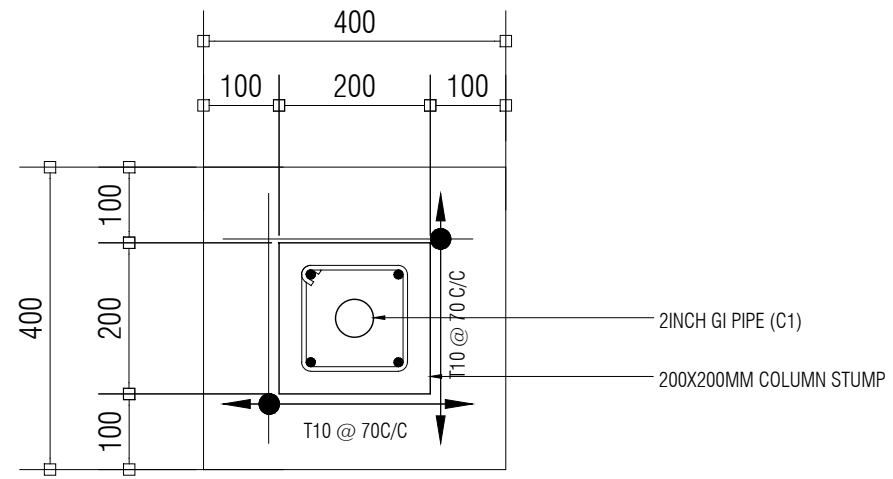


SHEET CONTENT
FOUNDATION PLAN

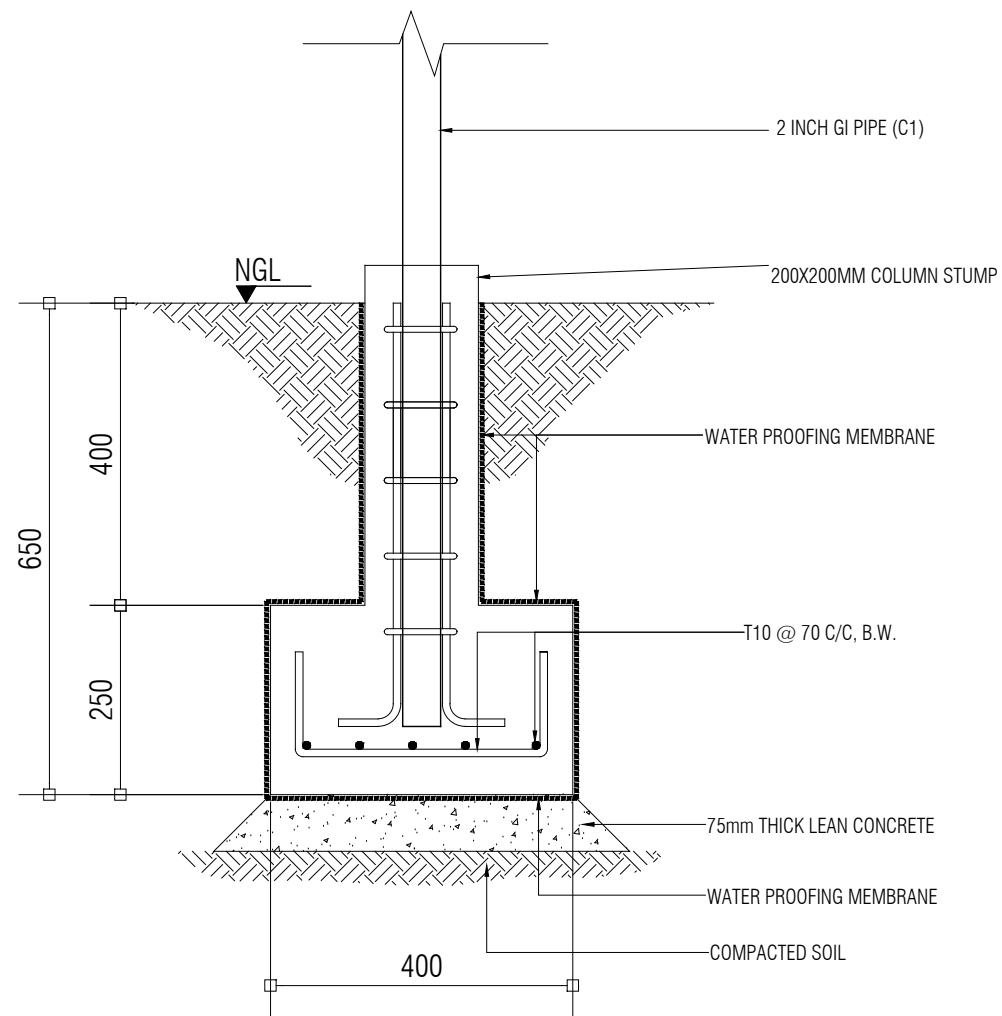
SHEET NO.

S 01





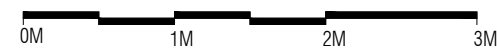
F1 (PLAN VIEW)



F1 (SECTION)

FOOTING DETAIL

SCALE 1:10



NOTE
 CONCRETE STRENGTH = 25 MPa
 CONCRETE COVER FOR FOOTING = 50 MM
 CONCRETE COVER FOR COLUMN STUMP = 40 MM

SHEET CONTENT

STRUCTURAL DETAIL

SHEET NO.

S 02

