

PROPOSED SERVICE DRAWINGS

TRANSPORT AUTHORITY,
REGIONAL AIRPORTS AUTHORITY,
MINISTRY OF TRANSPORT
AND CIVIL AVIATION

1ST, 2ND, 3RD & 4TH FLOOR
CHANBEYLI VILLA

LIGHTING, POWER, ELV & HVAC DRAWINGS

CLIENT: MoTCA

DEC 2019



Associates Architects

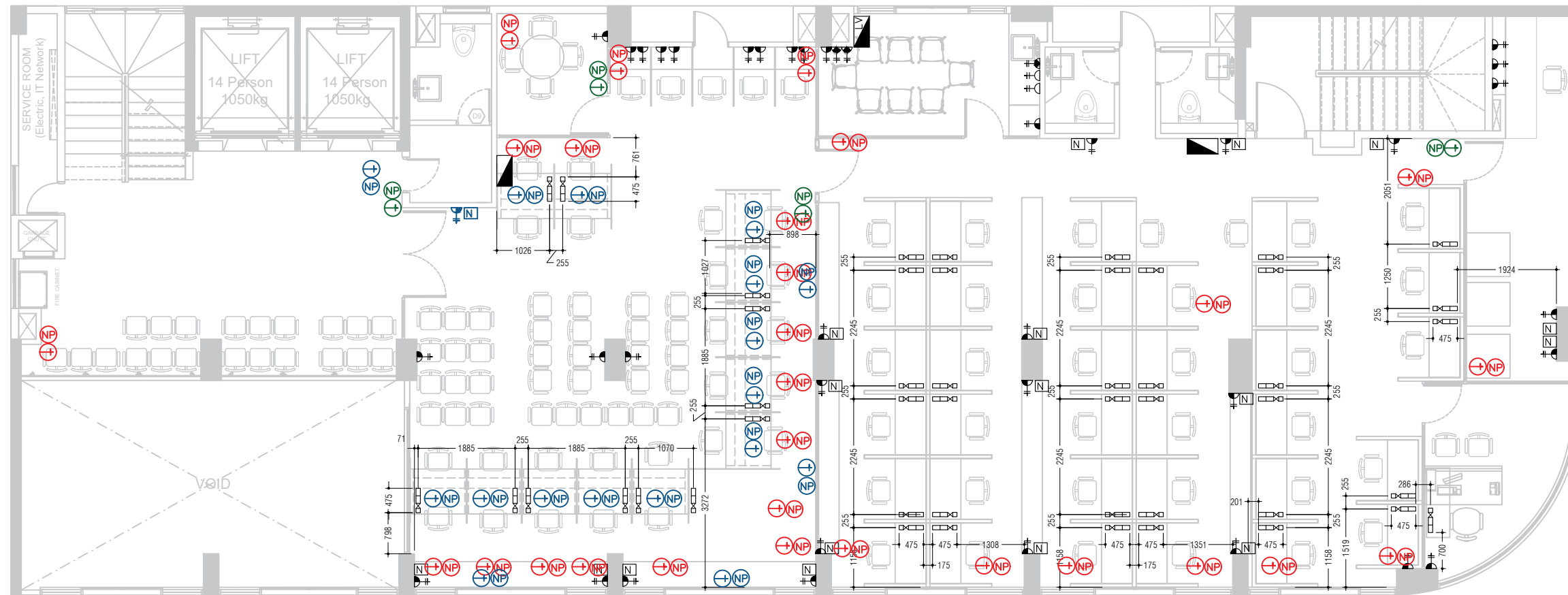
S M A S S O C I A T E S A R C H I T E C T S
RIHIKURI (1ST FLOOR), NIROLHU MAGU
NEIGHBORHOOD 1, HULHUMALE'
TEL: (960) 7826260, (960) 7977119
EMAIL: SM.ASSOC.ARCH@GMAIL.COM



SM Associates Architects

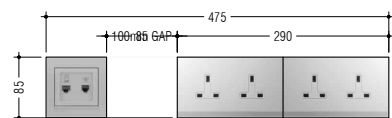
RIHIKURI (1ST FLOOR), NIROLHU MAGU NEIGHBORHOOD 1, HULHUMALE' TEL: (960) 7826260, (960)7977119 EMAIL: SM.ASSOC.ARCH@GMAIL.COM

NOTES:



COLOR REFERENCE-

- POWER & DATA FOR QUEUEBEE SYSTEM
- POWER & DATA FOR ACCESS CONTROL SYSTEM
- POWER & DATA FOR CCTV NETWORK



TYPICAL ARRANGEMENT FOR 2X 2 GANG 13 AMP SOCKET & RJ45 (IP TELEPHONE) & RJ45 (INTERNET) OUTLETS MOUNTED 300mm ABOVE FFL UNLESS OTHERWISE STATED.

SYMBOL	DESCRIPTION
	SECONDARY DISTRIBUTION BOARD
	2X 2 GANG 13 AMP SOCKET + DATA & TELEPHONE COMBO MOUNTED ON FLOOR UNLESS OTHERWISE STATED. 100mm GAP TO BE PROVIDED IN BETWEEN 13AMP SOCKET & DATA & TELEPHONE COMBO. REFER DETAIL.
	1X13A SOCKET OUTLET AT 1200mm ABOVE FFL
	1X13A SOCKET OUTLET AT 300mm ABOVE FFL
	2X13A SOCKET OUTLET AT 300mm ABOVE FFL
	2X13A SOCKET OUTLET AT 1200mm ABOVE FFL
	DATA & TELEPHONE COMBO OUTLET.
	DATA OUTLET FIXED TO WALL OR FLOOR (AS SHOWN).
	TELEPHONE OUTLET.
	CATV POINT

SYMBOL	DESCRIPTION
	1X13A SOCKET OUTLET AT 2350mm ABOVE FFL
	1X13A SOCKET OUTLET AT 2350mm ABOVE FFL
	2X13A SOCKET OUTLET AT FLOOR
	2X13A SOCKET OUTLET FIXED TO CEILING
	1X13A SOCKET OUTLET FIXED TO CEILING
	1X CAT6 CABLE COMING FROM DISTRIBUTION BOX TERMINATED AT CEILING.
	IT DISTRIBUTION SWITCH
	VGA CABLE TERMINATION
	HDMI CABLE TERMINATION

NOTE:

- 1) ALL DATA, CATV & TELEPHONE CABLES TO BE TERMINATED AT IT DISTRIBUTION SWITCH.
- 2) 2 X FIBER OPTIC CABLES (1 UPLINK, 1 REDUNDANCY) TO BE LAID FROM MAIN SERVER ROOM (IN 3RD FLOOR) TO ALL DISTRIBUTION SWITCHES.



NO.	DESCRIPTION	DATE
REV A0	ISSUED FOR CONSTRUCTION	01- DEC -19

MoTCA

PROPOSED SERVICES DRAWINGS FOR OFFICE INTERIOR - TA, RA, MoTCA

Client: Min. of TRANSPORT & CIVIL AVIATION

Services Design By: MURUSHID/SAMAAH

Design Detailer: MURUSHID/SAMAAH

Drawing Title: AS SHOWN

Issue: IFC Date: DEC 2019 Pages: 12

Scale: 1:100 Paper: A3

Dwg #: AR1922-EL05- REV[A0]



Associates Architects

RIHIKURI (1ST FLOOR), NIROLHU MAGU
NEIGHBORHOOD 1, HULHUMALE'
TEL: (960) 7826260, (960)7977119
EMAIL: SM.ASSOC.ARCH@GMAIL.COM

NOTES:

NO.	DESCRIPTION	DATE
REV A0	ISSUED FOR CONSTRUCTION	01- DEC -19

MoTCA

PROPOSED SERVICES DRAWINGS FOR
OFFICE INTERIOR - TA, RA, MoTCA

Client: Min. of TRANSPORT & CIVIL AVIATION

Services Design By: MURUSHID/SAMAHAH

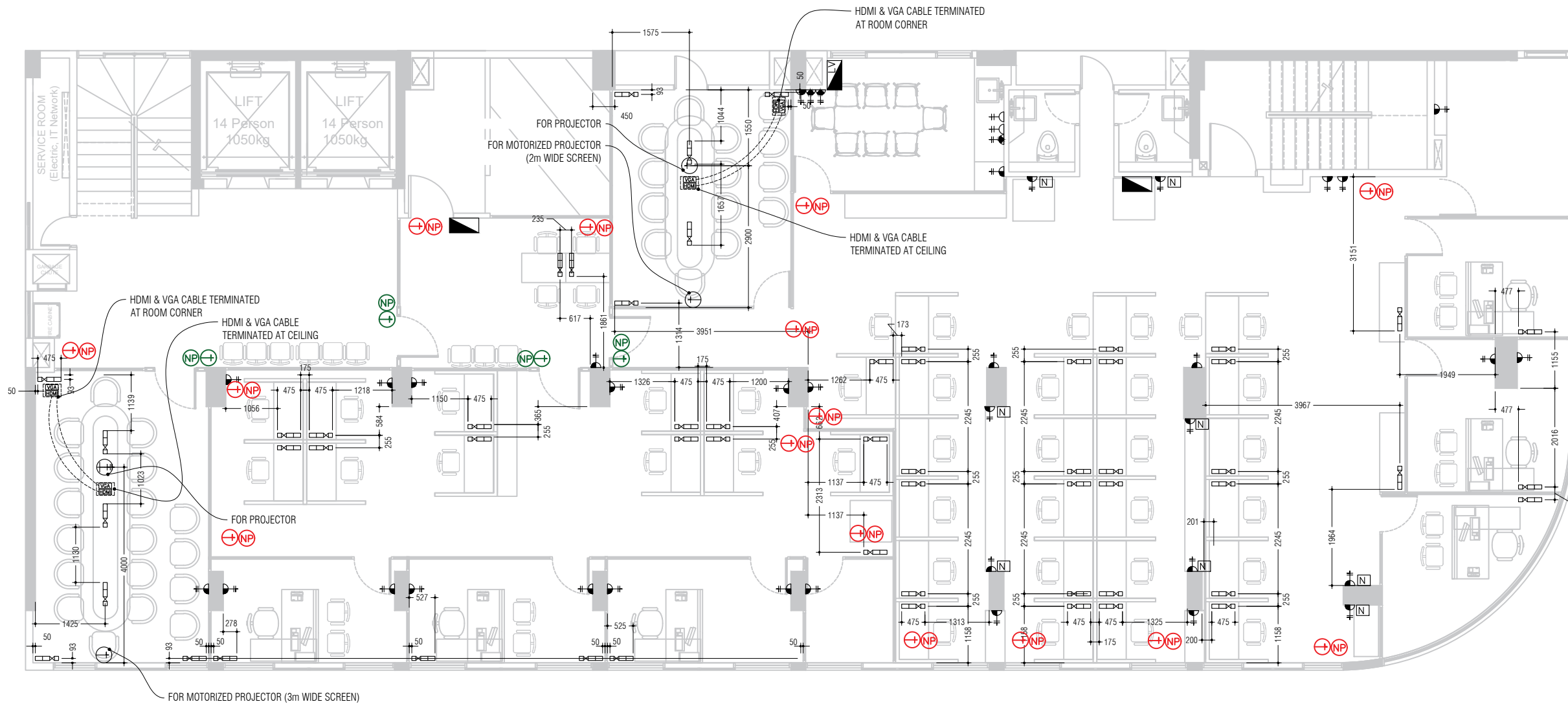
Design Detailer: MURUSHID/SAMAHAH

Drawing Title: AS SHOWN

Issue: IFC Date: DEC 2019 Pages: 12

Scale: 1:100 Paper: A3

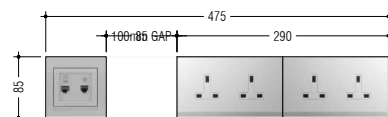
Dwg #: AR1922-EL06- REV[A0]



COLOR REFERENCE-

POWER & DATA FOR ACCESS CONTROL SYSTEM

POWER & DATA FOR CCTV NETWORK



TYPICAL ARRANGEMENT FOR 2X 2 GANG 13 AMP SOCKET & RJ45 (IP TELEPHONE) & RJ45 (INTERNET) OUTLETS MOUNTED 300mm ABOVE FFL UNLESS OTHERWISE STATED.

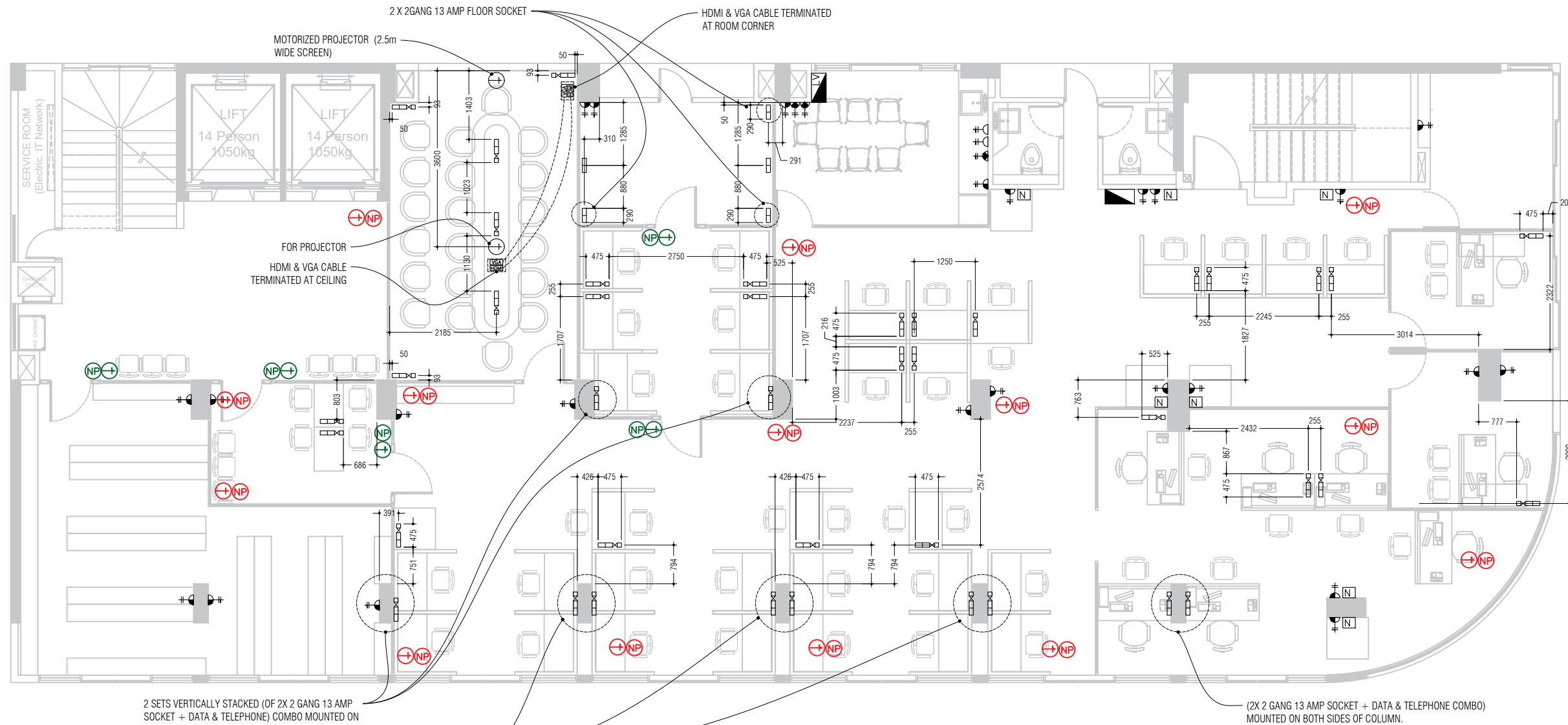
SYMBOL	DESCRIPTION
	SECONDARY DISTRIBUTION BOARD
	2X 2 GANG 13 AMP SOCKET + DATA & TELEPHONE COMBO MOUNTED ON FLOOR UNLESS OTHERWISE STATED. 100mm GAP TO BE PROVIDED IN BETWEEN 13AMP SOCKET & DATA & TELEPHONE COMBO. REFER DETAIL.
	1X13A SOCKET OUTLET AT 1200mm ABOVE FFL
	1X13A SOCKET OUTLET AT 300mm ABOVE FFL
	2X13A SOCKET OUTLET AT 300mm ABOVE FFL
	2X13A SOCKET OUTLET AT 1200mm ABOVE FFL
	DATA & TELEPHONE COMBO OUTLET.
	DATA OUTLET FIXED TO WALL OR FLOOR (AS SHOWN).
	TELEPHONE OUTLET.
	CATV POINT

SYMBOL	DESCRIPTION
	1X13A SOCKET OUTLET AT 2350mm ABOVE FFL
	1X13A SOCKET OUTLET AT 2350mm ABOVE FFL
	2X13A SOCKET OUTLET AT FLOOR
	2X13A SOCKET OUTLET FIXED TO CEILING
	1X13A SOCKET OUTLET FIXED TO CEILING
	1X CAT6 CABLE COMING FROM DISTRIBUTION BOX TERMINATED AT CEILING.
	IT DISTRIBUTION SWITCH
	VGA CABLE TERMINATION
	HDMI CABLE TERMINATION

NOTE:

- ALL DATA, CATV & TELEPHONE CABLES TO BE TERMINATED AT IT DISTRIBUTION SWITCH.
- 2 X FIBER OPTIC CABLES (1 UPLINK, 1 REDUNDANCY) TO BE LAID FROM MAIN SERVER ROOM (IN 3RD FLOOR) TO ALL DISTRIBUTION SWITCHES.

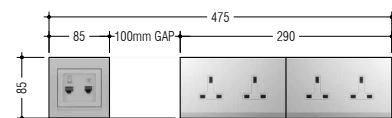
NOTES:



2 SETS VERTICALLY STACKED (OF 2X 2 GANG 13 AMP SOCKET + DATA & TELEPHONE COMBO) MOUNTED ON ONE SIDE OF COLUMN.

2 SETS VERTICALLY STACKED (2X 2 GANG 13 AMP SOCKET + DATA & TELEPHONE COMBO) MOUNTED ON BOTH SIDES OF COLUMN.

COLOR REFERENCE-
 POWER & DATA FOR ACCESS CONTROL SYSTEM
 POWER & DATA FOR CCTV NETWORK



TYPICAL ARRANGEMENT FOR 2X 2 GANG 13 AMP SOCKET & RJ45 (IP TELEPHONE) & RJ45 (INTERNET) OUTLETS MOUNTED 300mm ABOVE FFL UNLESS OTHERWISE STATED.

SYMBOL	DESCRIPTION
	SECONDARY DISTRIBUTION BOARD
	2X 2 GANG 13 AMP SOCKET + DATA & TELEPHONE COMBO MOUNTED ON FLOOR UNLESS OTHERWISE STATED. 100mm GAP TO BE PROVIDED IN BETWEEN 13AMP SOCKET & DATA & TELEPHONE COMBO. REFER DETAIL.
	1X13A SOCKET OUTLET AT 1200mm ABOVE FFL
	1X13A SOCKET OUTLET AT 300mm ABOVE FFL
	2X13A SOCKET OUTLET AT 300mm ABOVE FFL
	2X13A SOCKET OUTLET AT 1200mm ABOVE FFL
	DATA & TELEPHONE COMBO OUTLET.
	DATA OUTLET FIXED TO WALL OR FLOOR (AS SHOWN).
	TELEPHONE OUTLET.
	CATV POINT

SYMBOL	DESCRIPTION
	1X13A SOCKET OUTLET AT 2350mm ABOVE FFL
	1X13A SOCKET OUTLET AT 2350mm ABOVE FFL
	2X13A SOCKET OUTLET AT FLOOR
	2X13A SOCKET OUTLET FIXED TO CEILING
	1X13A SOCKET OUTLET FIXED TO CEILING
	1X CAT6 CABLE COMING FROM DISTRIBUTION BOX TERMINATED AT CEILING.
	IT DISTRIBUTION SWITCH
	VGA CABLE TERMINATION
	HDMI CABLE TERMINATION

- NOTE:
- 1) ALL DATA, CATV & TELEPHONE CABLES TO BE TERMINATED AT IT DISTRIBUTION SWITCH.
 - 2) 2 X FIBER OPTIC CABLES (1 UPLINK, 1 REDUNDANCY) TO BE LAID FROM MAIN SERVER ROOM (IN 3RD FLOOR) TO ALL DISTRIBUTION SWITCHES.

NO.	DESCRIPTION	DATE
REV A0	ISSUED FOR CONSTRUCTION	01- DEC -19

MoTCA

PROPOSED SERVICES DRAWINGS FOR OFFICE INTERIOR - TA, RA, MoTCA

Client: Min. of TRANSPORT & CIVIL AVIATION

Services Design By: MURUSHID/SAMAAH

Design Detailer: MURUSHID/SAMAAH

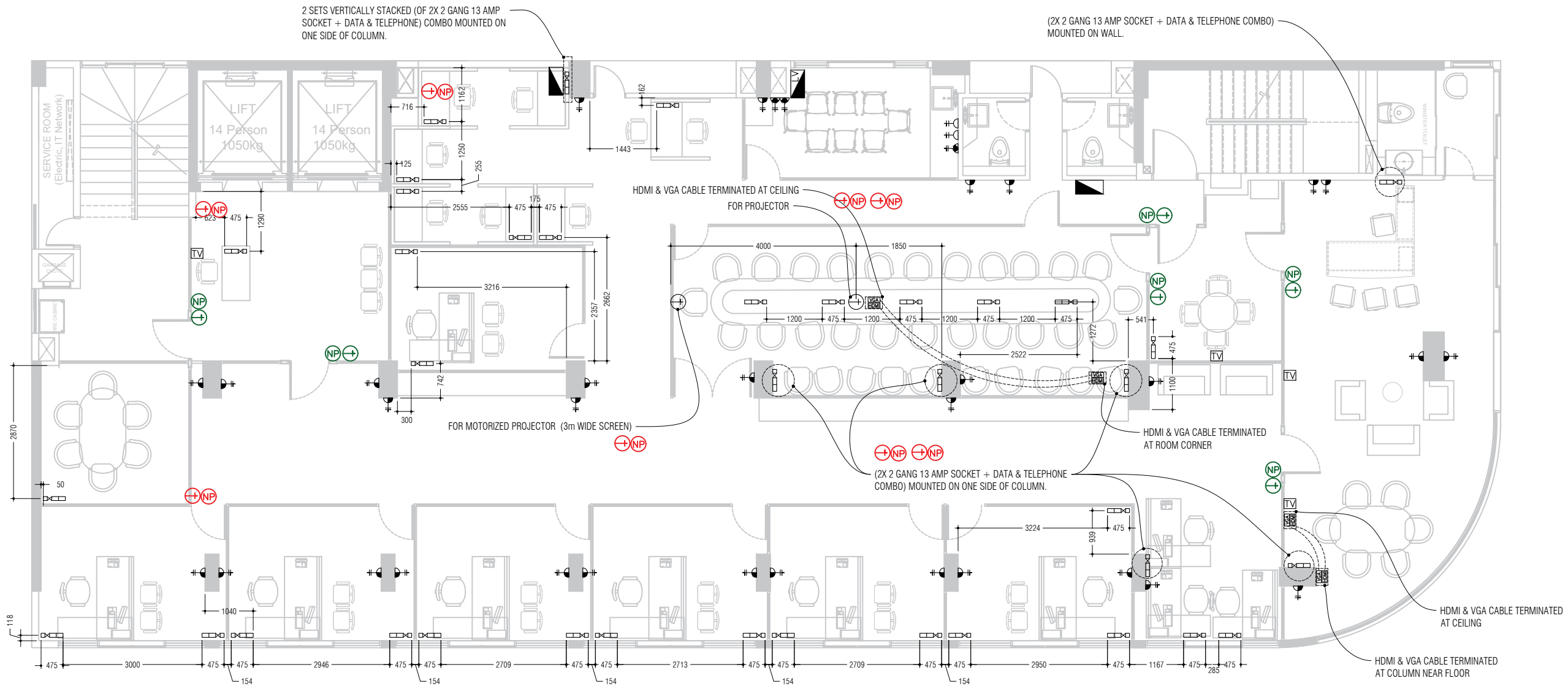
Drawing Title: AS SHOWN

Issue: IFC Date: DEC 2019 Pages: 12

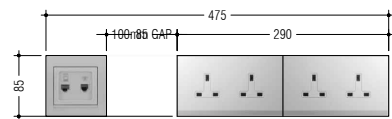
Scale: 1:100 Paper: A3

Dwg #: AR1922-EL07- REV[A0]

NOTES:



COLOR REFERENCE-
 POWER & DATA FOR ACCESS CONTROL SYSTEM
 POWER & DATA FOR CCTV NETWORK



TYPICAL ARRANGEMENT FOR 2X 2 GANG 13 AMP SOCKET & RJ45 (IP TELEPHONE) & RJ45 (INTERNET) OUTLETS MOUNTED 300mm ABOVE FFL UNLESS OTHERWISE STATED.

SYMBOL	DESCRIPTION
	SECONDARY DISTRIBUTION BOARD
	2X 2 GANG 13 AMP SOCKET + DATA & TELEPHONE COMBO MOUNTED ON FLOOR UNLESS OTHERWISE STATED. 100mm GAP TO BE PROVIDED IN BETWEEN 13AMP SOCKET & DATA & TELEPHONE COMBO. REFER DETAIL.
	1X13A SOCKET OUTLET AT 1200mm ABOVE FFL
	1X13A SOCKET OUTLET AT 300mm ABOVE FFL
	2X13A SOCKET OUTLET AT 300mm ABOVE FFL
	2X13A SOCKET OUTLET AT 1200mm ABOVE FFL
	DATA & TELEPHONE COMBO OUTLET.
	DATA OUTLET FIXED TO WALL OR FLOOR (AS SHOWN).
	TELEPHONE OUTLET.
	CATV POINT

SYMBOL	DESCRIPTION
	1X13A SOCKET OUTLET AT 2350mm ABOVE FFL
	1X13A SOCKET OUTLET AT 2350mm ABOVE FFL
	2X13A SOCKET OUTLET AT FLOOR
	2X13A SOCKET OUTLET FIXED TO CEILING
	1X13A SOCKET OUTLET FIXED TO CEILING
	1X CAT6 CABLE COMING FROM DISTRIBUTION BOX TERMINATED AT CEILING.
	IT DISTRIBUTION SWITCH
	VGA CABLE TERMINATION
	HDMI CABLE TERMINATION

- NOTE:
- 1) ALL DATA, CATV & TELEPHONE CABLES TO BE TERMINATED AT IT DISTRIBUTION SWITCH.
 - 2) 2 X FIBER OPTIC CABLES (1 UPLINK, 1 REDUNDANCY) TO BE LAID FROM MAIN SERVER ROOM (IN 3RD FLOOR) TO ALL DISTRIBUTION SWITCHES.

NO.	DESCRIPTION	DATE
REV A0	ISSUED FOR CONSTRUCTION	01- DEC -19

MoTCA

PROPOSED SERVICES DRAWINGS FOR OFFICE INTERIOR - TA, RA, MoTCA

Client: Min. of TRANSPORT & CIVIL AVIATION

Services Design By: MURUSHID/SAMAAH

Design Detailer: MURUSHID/SAMAAH

Drawing Title: AS SHOWN

Issue: IFC Date: DEC 2019 Pages: 12

Scale: 1:100 Paper: A3

Dwg #: AR1922-EL08- REV[A0]