

بِسْمِ اللّٰهِ الرَّحْمٰنِ الرَّحِیْمِ



## حکومت پنجاب

پنجاب پبلک سروس کمیشن: راجپوتانہ پبلک سروس کمیشن اور دیگر سرکاری اداروں کے لیے

پنجاب پبلک سروس کمیشن: 248/2026/04

پنجاب پبلک سروس کمیشن: (IUL)248-PRU/248/2026/41

22 جنوری 2026

راجپوتانہ پبلک سروس کمیشن  
پنجاب پبلک سروس کمیشن



<p>تاریخ: 05 جون 2026                  وقت: 11:30</p>	
<p>اساتذہ کرام کی طرف سے 6 گھنٹوں کی امتحان دیا جائے گا۔</p>	24.1
<p>اساتذہ کرام کی طرف سے 30 گھنٹوں کی امتحان دیا جائے گا۔</p>	28.1
<p>اساتذہ کرام کی طرف سے 30 گھنٹوں کی امتحان دیا جائے گا۔</p>	28.2
<p>اساتذہ کرام کی طرف سے 30 گھنٹوں کی امتحان دیا جائے گا۔</p>	30.1









16.2. מספר הנכנסים למערכת ייעוץ המבחנים יוגדר על ידי מנהל המבחנים ויכלול את כל המועמדים אשר נרשמו למבחנים.

16.2.1 מספר הנכנסים למערכת ייעוץ המבחנים יוגדר על ידי מנהל המבחנים ויכלול את כל המועמדים אשר נרשמו למבחנים.

16.2.2 מספר הנכנסים למערכת ייעוץ המבחנים יוגדר על ידי מנהל המבחנים ויכלול את כל המועמדים אשר נרשמו למבחנים.

(א) מספר המועמדים אשר ייקבעו למערכת ייעוץ המבחנים יוגדר על ידי מנהל המבחנים ויכלול את כל המועמדים אשר נרשמו למבחנים.

(ב) אולם, במקרה של קשיים טכניים או אחרים, יוכל מנהל המבחנים להגדיל את מספר המועמדים אשר ייקבעו למערכת ייעוץ המבחנים.

(ג) תהליך דרישת המועמדים למערכת ייעוץ המבחנים יוגדר על ידי מנהל המבחנים ויכלול את כל המועמדים אשר נרשמו למבחנים.

16.2.3 המועמדים אשר ייקבעו למערכת ייעוץ המבחנים יוגדרו על ידי מנהל המבחנים ויכלולו את כל המועמדים אשר נרשמו למבחנים.

(א) מספר המועמדים אשר ייקבעו למערכת ייעוץ המבחנים יוגדר על ידי מנהל המבחנים ויכלול את כל המועמדים אשר נרשמו למבחנים.

(ב) מספר המועמדים אשר ייקבעו למערכת ייעוץ המבחנים יוגדר על ידי מנהל המבחנים ויכלול את כל המועמדים אשר נרשמו למבחנים.

(ג) במקרה של קשיים טכניים או אחרים, יוכל מנהל המבחנים להגדיל את מספר המועמדים אשר ייקבעו למערכת ייעוץ המבחנים.

(ד) מספר המועמדים אשר ייקבעו למערכת ייעוץ המבחנים יוגדר על ידי מנהל המבחנים ויכלול את כל המועמדים אשר נרשמו למבחנים.

(ה) אולם, במקרה של קשיים טכניים או אחרים, יוכל מנהל המבחנים להגדיל את מספר המועמדים אשר ייקבעו למערכת ייעוץ המבחנים.

16.3. אולם, במקרה של קשיים טכניים או אחרים, יוכל מנהל המבחנים להגדיל את מספר המועמדים אשר ייקבעו למערכת ייעוץ המבחנים.

16.3.1 מספר המועמדים אשר ייקבעו למערכת ייעוץ המבחנים יוגדר על ידי מנהל המבחנים ויכלול את כל המועמדים אשר נרשמו למבחנים.



- 21.1. 21. 21.1. 21.1.1. 21.1.2. 21.1.3. 23.1. 24.1. 25.1. 26.1. 27.1.















2 - قىسىم

سۆز تۈزۈش

1. سۆز تۈزۈش قىسمىدا دېيىلگەن	
1.1	سۆز
1.2	ئۇنۋان
2. سۆز تۈزۈش قىسمىدا دېيىلگەن	
2.1	بىر تىلدا سۆز
2.2	بىر تىلدا سۆز
3. سۆز تۈزۈش قىسمىدا دېيىلگەن	
3.1	سۆز تۈزۈش
	بىر تىلدا
	بىر تىلدا:
3.2	بىر تىلدا (بىر تىلدا)
3.3	بىر تىلدا (بىر تىلدا)
4. سۆز تۈزۈش قىسمىدا دېيىلگەن	
4.1	بىر تىلدا سۆز تۈزۈش قىسمىدا دېيىلگەن، بىر تىلدا سۆز تۈزۈش قىسمىدا دېيىلگەن / بىر تىلدا سۆز تۈزۈش قىسمىدا دېيىلگەن، بىر تىلدا سۆز تۈزۈش قىسمىدا دېيىلگەن / بىر تىلدا سۆز تۈزۈش قىسمىدا دېيىلگەن.
4.2	بىر تىلدا سۆز تۈزۈش قىسمىدا دېيىلگەن، بىر تىلدا سۆز تۈزۈش قىسمىدا دېيىلگەن / بىر تىلدا سۆز تۈزۈش قىسمىدا دېيىلگەن، بىر تىلدا سۆز تۈزۈش قىسمىدا دېيىلگەن.
4.3	بىر تىلدا سۆز تۈزۈش قىسمىدا دېيىلگەن، بىر تىلدا سۆز تۈزۈش قىسمىدا دېيىلگەن / بىر تىلدا سۆز تۈزۈش قىسمىدا دېيىلگەن، بىر تىلدا سۆز تۈزۈش قىسمىدا دېيىلگەن.
5. سۆز تۈزۈش قىسمىدا دېيىلگەن	
	سۆز
	سۆز
	سۆز
	سۆز

3 - جدول المحتويات

محتويات الكتاب

1. محتويات الكتاب		
1.1	مقدمة	
1.2	مقدمة المؤلف	
1.3	مقدمة المترجم	
1.4	مقدمة الناشر	
1.5	مقدمة المجلس الأعلى للثقافة	
1.6	مقدمة اللجنة العلمية	
1.7	مقدمة اللجنة التنفيذية	
1.8	مقدمة المجلس القومي للدراسات والبحوث	
2. محتويات الكتاب		
#	المحتوى	الصفحة
	مقدمة المؤلف	1
	مقدمة المترجم	2
	مقدمة الناشر	3
	مقدمة المجلس الأعلى للثقافة	4
	مقدمة اللجنة العلمية	5
	مقدمة اللجنة التنفيذية	6
	مقدمة المجلس القومي للدراسات والبحوث	7
3. محتويات الكتاب		

4 - جدول

جدول التقييمات الخاصة بالبرامج

مؤشر أداء برنامجي التقييمات الخاصة بالبرامج			
#	البرنامج المراد تقييمه	البرنامج المراد تقييمه	البرنامج المراد تقييمه
جدول			
مؤشر أداء برنامجي التقييمات الخاصة بالبرامج			
#	البرنامج المراد تقييمه	البرنامج المراد تقييمه	البرنامج المراد تقييمه
جدول			

ملاحظة: يؤخذ التقييمات الخاصة بالبرامج من 20 برنامجاً التقييمات الخاصة بالبرامج. أما التقييمات الخاصة بالبرامج من 100 برنامجاً التقييمات الخاصة بالبرامج.



7 - ބަންދު

ބަންދުގެ ސަބަބުން

### Form of Bid Security (Bank Guarantee)

WHEREAS, .....[name of Bidder] (hereinafter called “the Bidder”) has submitted his Bid for the Tender no.....issued by the Ministry of Education on .....for Supplying/Purchasing of .....[name of Contract] (hereinafter called “the Bid”).

KNOW ALL PEOPLE by these presents that We ..... [name of Bank] of ..... [name of country] having our registered office at ..... (hereinafter called “the Bank”) are bound unto .....[name of Purchaser] (hereinafter called “the Purchaser”) in the sum of \*..... for which payment well and truly to be made to the said Purchaser, the Bank binds itself, its successors, and assigns by these presents.

SEALED with the Common Seal of the said Bank this .....day of .....20.....

THE CONDITIONS of this obligation are:

- (1) If, after Bid opening, the Bidder withdraws his Bid during the period of Bid validity specified in the Form of Bid;
- or
- (2) If the Bidder having been notified of the acceptance of his Bid by the Purchaser during the period of Bid validity:
  - (a) fails or refuses to execute the Form of Agreement in accordance with the Instructions to Bidders, if required; or
  - (b) fails or refuses to furnish the Performance Security, in accordance with the Instruction to Bidders; or
  - (c) does not accept the correction of the Bid Price pursuant to Clause 27,

\* The Bidder should insert the amount of the Guarantee in words and figures denominated in Maldivian Rufiyaa. This figure should be the same as shown in Clause 16.1 of the Instructions to Bidders.

we undertake to pay to the Purchaser up to the above amount upon receipt of his first written demand, without the Purchaser’s having to substantiate his demand, provided that in his demand the Purchaser will note that the amount claimed by him is due to him owing to the occurrence of one or any of the three conditions, specifying the occurred condition or conditions.

This Guarantee will remain in force up to and including the date ..... days after the deadline for submission of bids as such deadline is stated in the Instructions to Bidders or as it may be extended by the Purchaser, notice of which extension(s) to the Bank is hereby waived. Any demand in respect of this Guarantee should reach the Bank not later than the above date.

DATE..... SIGNATURE OF THE BANK

WITNESS ..... SEAL

[signature, name, and address]

8 - ޖަހަވާނު

ފޯމް ޖަހަވާނު ޖަހަވާނުގެ ޖަހަވާނު

# Form of Performance Bank Guarantee (Unconditional)

To: .....  
[name & address of Purchaser]  
.....  
.....

WHEREAS ..... [name and address of Supplier] (hereinafter called "the Supplier") has undertaken, in pursuance of Contract No. .... dated ..... to execute ..... [name of Contract and brief description of Works] (hereinafter called "the Contract");

AND WHEREAS it has been stipulated by you in the said Contract that the Supplier shall furnish you with a Bank Guarantee by a recognized bank for the sum specified therein as security for compliance with his obligations in accordance with the Contract;

AND WHEREAS we have agreed to give the Supplier such a Bank Guarantee;

NOW THEREFORE we hereby affirm that we are the Guarantor and responsible to you, on behalf of the Supplier, up to a total of \*..... [amount of Guarantee] ..... [amount in words], such sum being payable in the types and proportions of currencies in which the Contract Price is payable, and we undertake to pay you, upon your first written demand and without cavil or argument, any sum or sums within the limits of ..... [amount of Guarantee] as aforesaid without your needing to prove or to show grounds or reasons for your demand for the sum specified therein.

\*An amount is to be inserted by the Guarantor, representing the percentage of the Contract Price specified in the Contract, in Maldivian Rufiyaa.

We hereby waive the necessity of your demanding the said debt from the Supplier before presenting us with the demand.

We further agree that no change or addition to or other modification of the terms of the Contract or of the Works to be performed there under or of any of the Contract documents which may be made between you and the Supplier shall in any way release us from any liability under this Guarantee, and we hereby waive notice of any such change, addition, or modification.

This Guarantee shall be valid until the date of issue of the Defects Correction Certificate.

SIGNATURE AND SEAL OF THE GUARANTOR .....

Name of Bank .....

Address .....

.....

.....

9 -

مركز التجارة

## Outdoor LED Motion Sensor Ceiling Light

**Item:** Outdoor LED Motion Sensor Ceiling Light (IP65)

### Specification

- Type: Surface-mounted LED ceiling light with integrated PIR motion sensor.
- Housing: Die-cast aluminum or UV-resistant polycarbonate body with frosted polycarbonate diffuser.
- Wattage: 18–24 W.
- Input Voltage: 220–240 V AC, 50/60 Hz.
- Luminous Output: Minimum 1,800 lumens.
- Colour Temperature: 4000K (Neutral White) or 6500K (Cool White).
- Colour Rendering Index (CRI):  $\geq 80$ .
- Beam Angle:  $120^\circ$ .
- Motion Sensor Range: 5–8 m.
- Detection Angle:  $120^\circ$ – $360^\circ$  (depending on model).
- Time Delay: Adjustable from 10 seconds to 5 minutes.
- Ambient Light Control: Adjustable daylight sensor.
- Protection Rating: IP65 suitable for outdoor installation.
- Impact Resistance: IK08 minimum.
- Operating Temperature:  $-20^\circ\text{C}$  to  $+50^\circ\text{C}$ .
- Rated Lifetime: Minimum 50,000 hours.
- Mounting: Surface ceiling or soffit mounting.
- Certification: IEC, CE, RoHS compliant.
- Warranty: Minimum 2 years.



## Silicone Acetate Sanitary Sealant

**Item:** Acetate Cure Silicone Sealant

### Specification

- Type: One-component acetoxy curing silicone sealant.
- Colour: White, Clear, Black or as specified.
- Cartridge Size: 280–300 ml.

- Cure System: Moisture curing.
- Skin Formation Time: 10–20 minutes.
- Full Cure Rate: Approximately 2–3 mm per 24 hours.
- Service Temperature: -40°C to +150°C.
- Application Temperature: +5°C to +40°C.
- Excellent adhesion to:
  - Glass
  - Ceramic
  - Aluminium
  - Enamel
  - Non-porous surfaces
- Resistant to:
  - Water
  - UV radiation
  - Weathering
  - Mildew and fungi
- Suitable for:
  - Bathrooms
  - Kitchens
  - Wash basins
  - Shower enclosures
  - Window sealing
- Shelf Life: Minimum 12 months in unopened container.
- Manufacturer: Würth or approved equivalent.



## Surface Mount PVC Switch Box (Pattress Box)

**Item:** Surface Mounted PVC Back Box

### Specification

- Material: Flame-retardant rigid PVC.
- Colour: White.
- Type: Surface mounting.
- Size:
  - 1 Gang
  - 2 Gang
  - As indicated on drawings.
- Depth: 25 mm or 35 mm.
- Knockouts: Multiple cable entry points.

- Mounting Holes: Pre-moulded fixing holes.
- Brass Inserts: Corrosion-resistant brass threaded inserts.
- Insulation Voltage: 500 V.
- Impact Resistance: High impact PVC.
- UV Resistant: Yes.
- Standard: BS 4662 / IEC compliant.
- Suitable for switches, sockets and accessories.
- Operating Temperature: -5°C to +60°C.



•

## Twin 13A Switched Universal Socket Outlet

**Item:** Double Universal Switched Socket Outlet

### Specification

- Type: Twin switched universal socket outlet.
- Rated Voltage: 250 V AC.
- Rated Current: 13 A.
- Frequency: 50/60 Hz.
- Configuration: Universal socket compatible with multiple international plug types.
- Material:
  - Flame-retardant polycarbonate front plate.
  - High conductivity brass contacts.
- Colour: White.
- Finish: Gloss.
- Earth Terminal: Included.
- Terminal Type: Screw terminal.
- Mounting: Flush or surface.
- Protection: Shuttered socket outlets.
- Standard: BS 1363 / IEC 60884.
- Operating Temperature: -5°C to +40°C.
- Mechanical Life: Minimum 40,000 switching operations.
- Warranty: Minimum 2 years.



## Triple Gang 1-Way Light Switch

**Item:** 3 Gang 1-Way Switch

### Specification

- Type: Three-gang one-way light switch.
- Rated Voltage: 250 V AC.
- Rated Current: 10 A.
- Frequency: 50/60 Hz.
- Material:
  - Flame-retardant polycarbonate faceplate.
  - Brass terminals.
- Colour: White.
- Finish: Gloss.
- Mounting: Flush mounting.
- Terminal Type: Screw terminals.
- Contact Material: Silver alloy contacts.
- Mechanical Life: Minimum 40,000 operations.
- Electrical Life: Minimum 10,000 operations.
- Protection: IP20 (Indoor use).
- Standard: BS EN 60669-1 / IEC 60669.
- Operating Temperature: -5°C to +40°C.
- Warranty: Minimum 2 years.



### 6 Outdoor Switched Socket Outlet

Weatherproof double-gang switched socket outlet, 13A, 250V AC, IP66 rated, UV-resistant polycarbonate enclosure, hinged transparent cover, suitable for outdoor installation, complying with BS 1363.



### 6 PVC Casing / Trunking

PVC cable trunking/casing, white color, self-extinguishing rigid PVC, complete with cover, suitable for surface wiring installation. Typical size: 25mm × 16mm (or as specified).



### Dimmer Switch

1-Gang rotary dimmer switch, 220–240V AC, compatible with dimmable LED lamps, trailing-edge technology, white finish, rated 100W–250W depending on load.



### LED Panel Light (Round Recessed)

Round recessed LED panel light, 36W, 220–240V AC, 4000K neutral white, luminous output approximately 1500–1800 lumens, CRI >80, beam angle 120°, complete with LED driver.



### Outdoor LED Bulkhead Light

LED bulkhead wall/ceiling light, 18W, 2200 lumens, 4000K neutral white, beam angle 110°, IK08 impact resistance, IP65 weatherproof rating, suitable for outdoor use, wall or ceiling mounted.



### 2.5 mm<sup>2</sup> Electrical Cable Specification

- Conductor size: **2.5 mm<sup>2</sup>**
- Conductor material: **Annealed stranded copper**
- Number of cores: **Single core** (or as specified)



## Miniature Circuit Breaker (MCB) – 10A

- Type: **Miniature Circuit Breaker (MCB)**
- Current Rating: **10 Ampere (A)**
- Poles: **Single Pole (SP)**
- Rated Voltage: **230/240V AC**
- Frequency: **50/60 Hz**
- Breaking Capacity: **6 kA (minimum)**
- Tripping Curve: **Type B or Type C**
- Mounting: **DIN Rail Mounted**
- Standard: **IEC 60898-1**
- Application: **Lighting circuits and low-power electrical loads**
- Housing: **Flame-retardant thermoplastic**



## Distribution Board (DB) Box – 20 Way

- Type: **Electrical Distribution Board (DB)**
- Capacity: **20 Way / 20 Module**
- Mounting: **Surface Mounted or Flush Mounted**
- Material: **Powder-coated galvanized steel**
- Door Type: **Metal door / Transparent hinged door**
- Rated Voltage: **230/400V AC**
- Frequency: **50/60 Hz**
- Ingress Protection: **IP40 minimum (indoor use)**
- Busbar: **Copper busbar**
- Neutral Bar: **Included**
- Earth Bar: **Included**
- DIN Rail: **Included for MCB installation**
- Standard: **IEC 61439 or equivalent**
- Finish: **Corrosion-resistant powder coating**
- Application: **Housing and protection of MCBs, RCCBs, and electrical circuits**
- Complete with: **Mounting accessories, labeling, and internal wiring arrangements**















INFRASTRUCTURE AND BUILDING DEVELOPMENT

---

# ELECTRICAL PLANS

HA. IHAVANDHOO



INFRASTRUCTURE & BUILDING DEVELOPMENT  
MALDIVES POLICE SERVICE

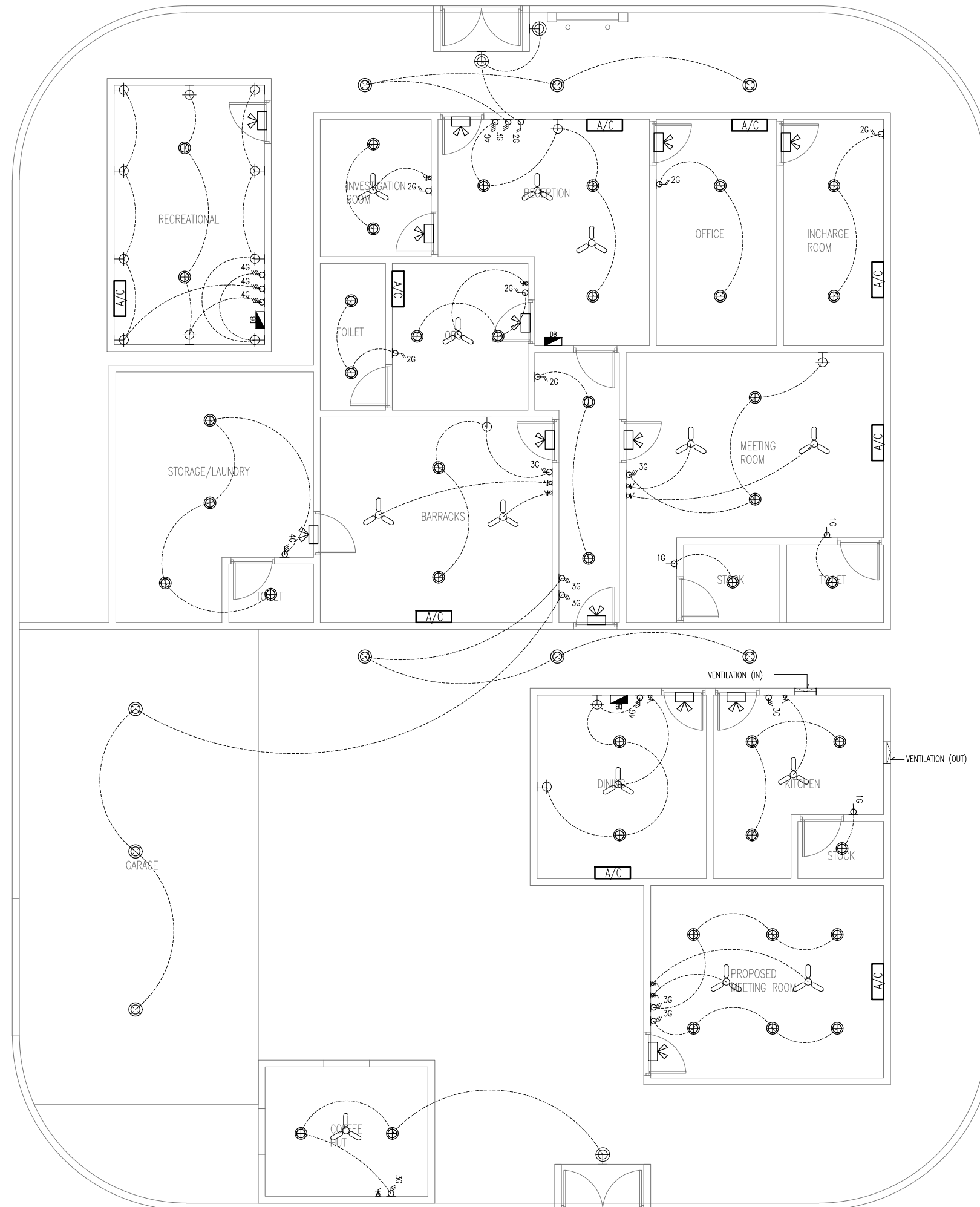
PROJECT TITLE:

HA. IHAVANDHOO POLICE STATION  
ELECTRICAL PLAN

ARCHITECT/DESIGNER	DRAFTED BY
	TSO SADIN SHAREEF
STRUCTURAL ENGINEER	DRAFTED BY
CHECKED BY	CHECKED BY
ADMINISTRATIVE DIRECTOR AHMED SADHEEM	INSP OF POLICE AHMED NIZAL

ARCHITECTURAL DRAWINGS	
SHEET NO.	DATE: 17-JUL-2025

E-01



	SWITCH WITH DIMMER
	1GNG SWITCH
	2GNG SWITCH
	3GNG SWITCH
	4GNG SWITCH
	CEILING MOUNT 18W LED LIGHT
	CEILING MOUNT 18W LED LIGHT WEATHER PROOF, LIGHT SENSOR SWITCH
	FAN
	ELECTRICAL DISTRIBUTION BOARD
	WALL MOUNT LED EMERGENCY LIGHT (PROVIDE 1.3A SINGLE SOCKET @ 2.8M I.E. INSIDE CEILING)
	A/C INDOOR UNIT WITH 15A POWER SOCKET
	VENTILATION
	WALL FIXED LIGHT @ 2.4M
	WALL FIXED WEATHER PROOF LIGHT @ 2.4M

LIGHTING AND A/C PLAN  
1:100



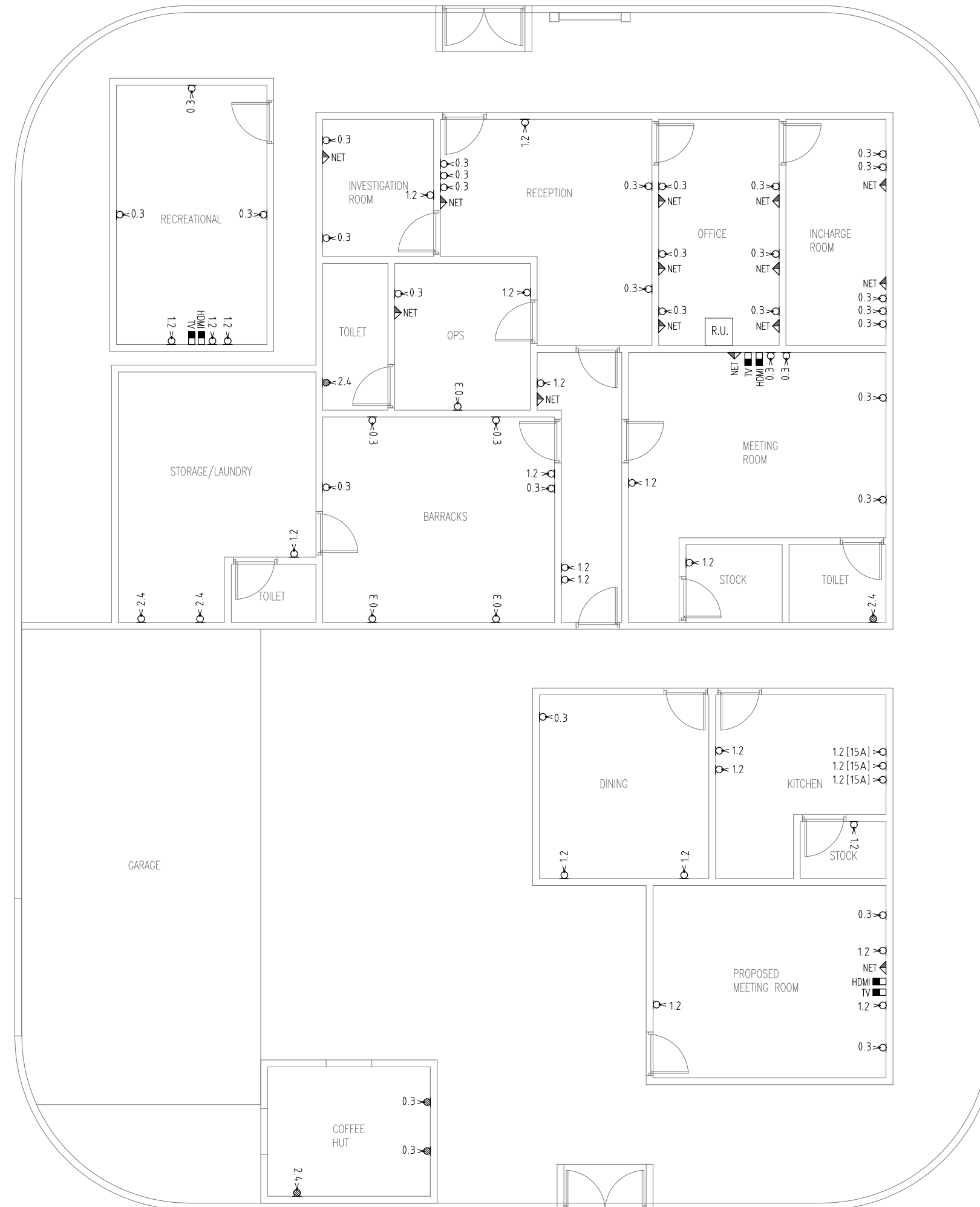
INFRASTRUCTURE & BUILDING DEVELOPMENT  
MALDIVES POLICE SERVICE

PROJECT TITLE:  
HA. IHAVANDHOO POLICE STATION  
ELECTRICAL PLAN

ARCHITECT/DESIGNER	DRAFTED BY
	TSO SADIN SHAREEF
STRUCTURAL ENGINEER	DRAFTED BY
CHECKED BY	CHECKED BY
ADMINISTRATIVE DIRECTOR AHMED SADHEEM	INSP OF POLICE AHMED NIZAL

ARCHITECTURAL DRAWINGS	
SHEET NO.	DATE: 17-JUL-2025

E-02



	POWER SOCKET 2.4M (2GNG)
	POWER SOCKET 1.2M (2GNG)
	POWER SOCKET 0.3M (2GNG)
	POWER SOCKET[WEATHER PROOF] 0.3M (2GNG)
	POWER SOCKET[WEATHER PROOF] 1.2M (2GNG)
	POWER SOCKET 0.3M 15 AMPERE (2GNG)
	POWER SOCKET 1.2M 15 AMPERE (2GNG)
	POWER SOCKET[WEATHER PROOF] 2.4M (2GNG)
	INTRANET DOUBLE GANG WITH SEPARATE CABLE
	CABLE TV POINT
	HDMI
	RACK UNIT

ELECTRICAL NETWORK PLAN  
1:100



INFRASTRUCTURE & BUILDING DEVELOPMENT  
MADHYES POLICE SERVICE



PROJECT TITLE:

HA. IHANANDHOO POLICE STATION  
ELECTRICAL PLAN

ARCHITECT/DESIGNER

DRAWN BY

TSO  
SADAN SHARMA

STRUCTURAL ENGINEER

DRAWN BY

CHECKED BY

ADMINISTRATIVE DIRECTOR  
AHMED SAOHEEM

CHECKED BY

NSP OF POL  
AHMED SAOHEEM

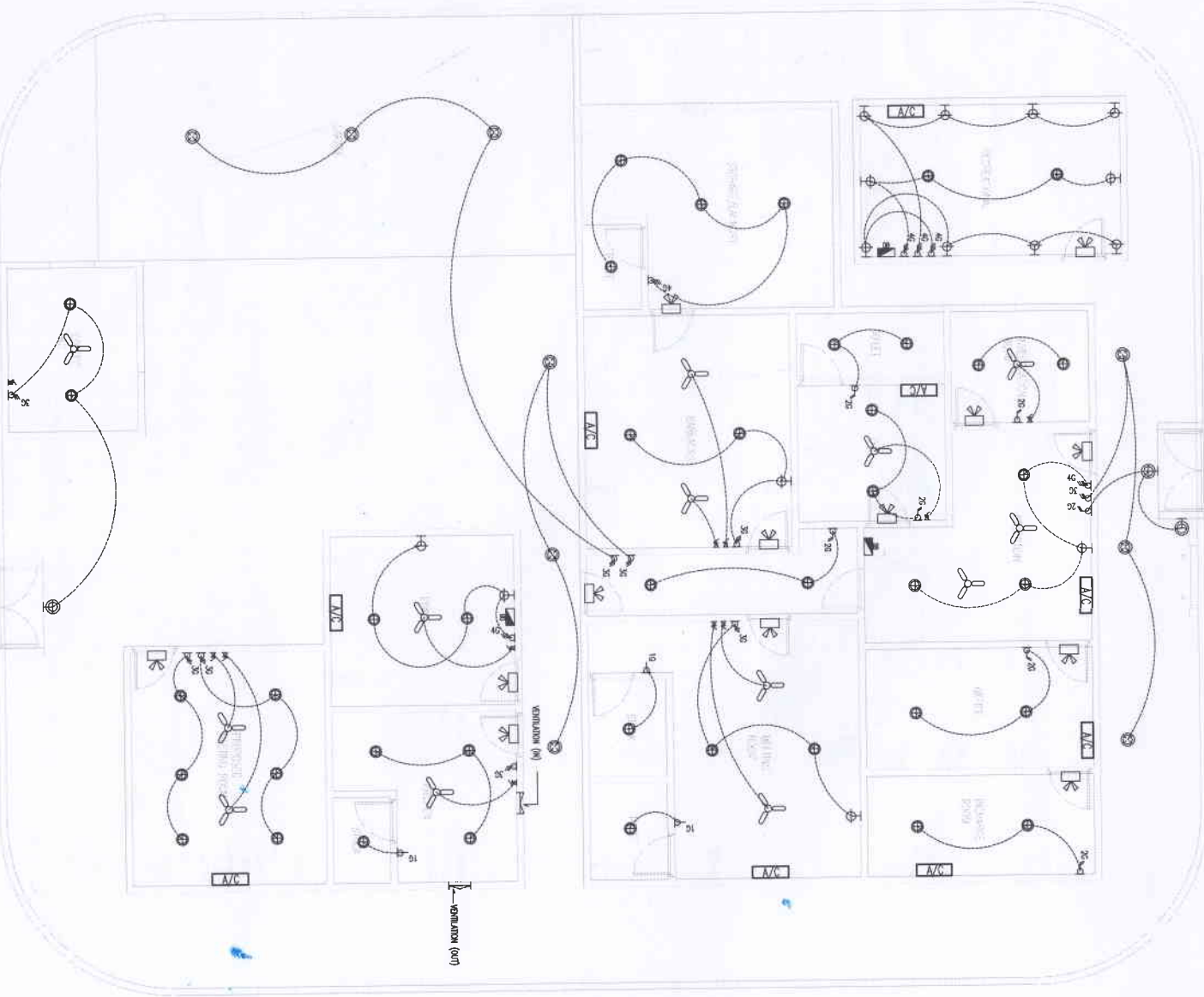
ARCHITECTURAL DRAWINGS

SHEET NO.

DATE: 17-11-2023

E-0

ELECTRIC AND A/C LEGEND	
SW	SWITCH WITH NUMBER
1W	1ONG SWITCH
2W	2ONG SWITCH
3W	3ONG SWITCH
4W	4ONG SWITCH
5W	5ONG SWITCH
6W	6ONG SWITCH
7W	7ONG SWITCH
8W	8ONG SWITCH
9W	9ONG SWITCH
10W	10ONG SWITCH
11W	11ONG SWITCH
12W	12ONG SWITCH
13W	13ONG SWITCH
14W	14ONG SWITCH
15W	15ONG SWITCH
16W	16ONG SWITCH
17W	17ONG SWITCH
18W	18ONG SWITCH
19W	19ONG SWITCH
20W	20ONG SWITCH
21W	21ONG SWITCH
22W	22ONG SWITCH
23W	23ONG SWITCH
24W	24ONG SWITCH
25W	25ONG SWITCH
26W	26ONG SWITCH
27W	27ONG SWITCH
28W	28ONG SWITCH
29W	29ONG SWITCH
30W	30ONG SWITCH
31W	31ONG SWITCH
32W	32ONG SWITCH
33W	33ONG SWITCH
34W	34ONG SWITCH
35W	35ONG SWITCH
36W	36ONG SWITCH
37W	37ONG SWITCH
38W	38ONG SWITCH
39W	39ONG SWITCH
40W	40ONG SWITCH
41W	41ONG SWITCH
42W	42ONG SWITCH
43W	43ONG SWITCH
44W	44ONG SWITCH
45W	45ONG SWITCH
46W	46ONG SWITCH
47W	47ONG SWITCH
48W	48ONG SWITCH
49W	49ONG SWITCH
50W	50ONG SWITCH
51W	51ONG SWITCH
52W	52ONG SWITCH
53W	53ONG SWITCH
54W	54ONG SWITCH
55W	55ONG SWITCH
56W	56ONG SWITCH
57W	57ONG SWITCH
58W	58ONG SWITCH
59W	59ONG SWITCH
60W	60ONG SWITCH
61W	61ONG SWITCH
62W	62ONG SWITCH
63W	63ONG SWITCH
64W	64ONG SWITCH
65W	65ONG SWITCH
66W	66ONG SWITCH
67W	67ONG SWITCH
68W	68ONG SWITCH
69W	69ONG SWITCH
70W	70ONG SWITCH
71W	71ONG SWITCH
72W	72ONG SWITCH
73W	73ONG SWITCH
74W	74ONG SWITCH
75W	75ONG SWITCH
76W	76ONG SWITCH
77W	77ONG SWITCH
78W	78ONG SWITCH
79W	79ONG SWITCH
80W	80ONG SWITCH
81W	81ONG SWITCH
82W	82ONG SWITCH
83W	83ONG SWITCH
84W	84ONG SWITCH
85W	85ONG SWITCH
86W	86ONG SWITCH
87W	87ONG SWITCH
88W	88ONG SWITCH
89W	89ONG SWITCH
90W	90ONG SWITCH
91W	91ONG SWITCH
92W	92ONG SWITCH
93W	93ONG SWITCH
94W	94ONG SWITCH
95W	95ONG SWITCH
96W	96ONG SWITCH
97W	97ONG SWITCH
98W	98ONG SWITCH
99W	99ONG SWITCH
100W	100ONG SWITCH



LIGHTING AND A/C PLAN  
1:100