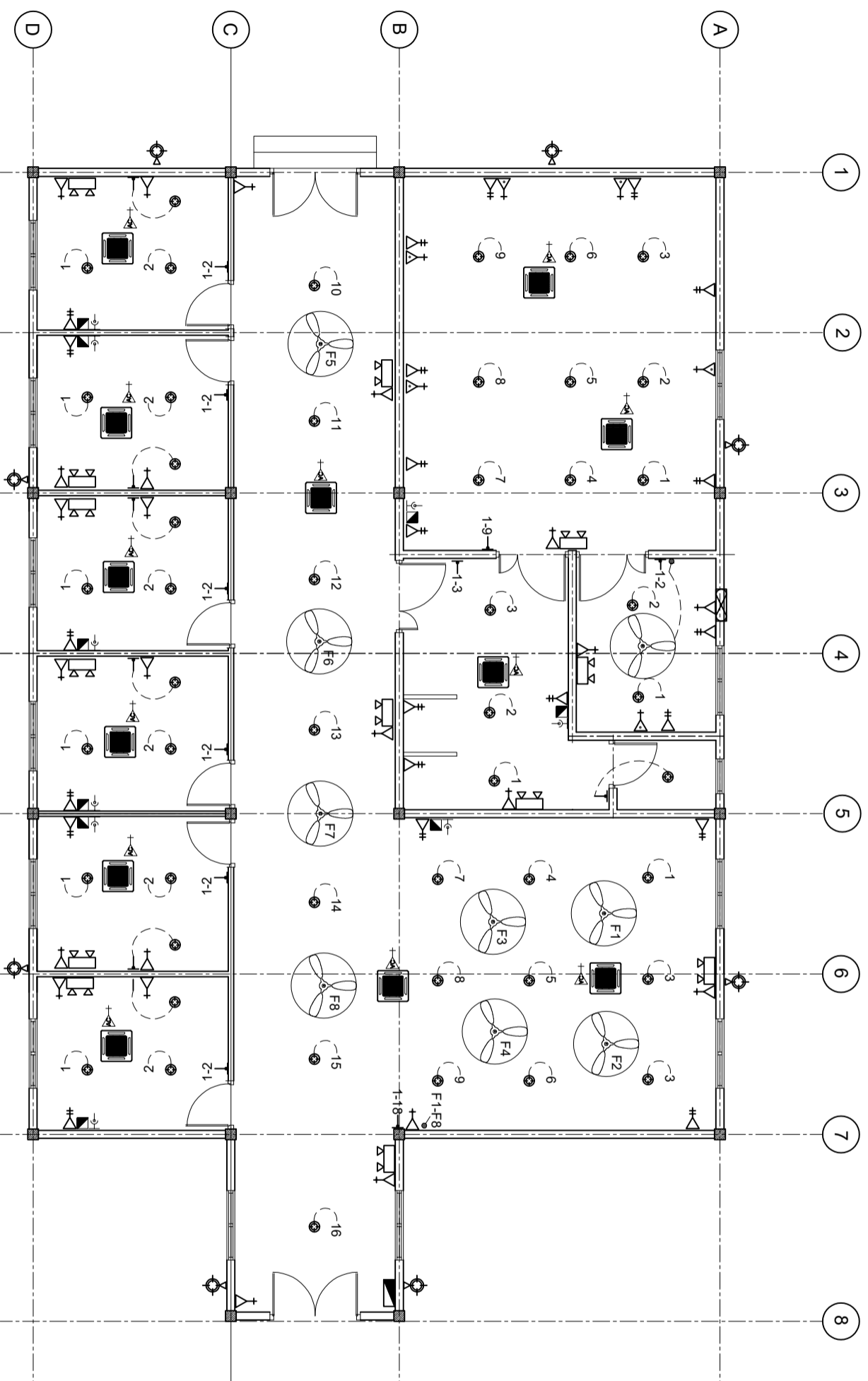


ELECTRICAL LAYOUT

SCALE: 1 : 100



LEGEND

SYMBOL	DESCRIPTION
	LED BULB WITH 150MM DOWN LIGHT
	1 x 13 AMP SOCKET OUTLET (1600MM ABOVE FFL)
	2 x 13 AMP SOCKET OUTLET (600MM ABOVE FFL)
	1 x 15 AMP SOCKET OUTLET (600MM ABOVE FFL)
	1 x 15 AMP AC SOCKET OUTLET (300MM BL.W, CEILING)
	TWO GANG SWITCH
	ONE WAY SWITCH
	EMERGENCY LIGHT
	DISTRIBUTION BOARD (WALL EMBEDDED)
	AC WALL MOUNT UNIT
	TELEPHONE SOCKET
	NETWORK SOCKET

LEGEND

SYMBOL	DESCRIPTION
	1 x 13 AMP SOCKET OUTLET (200MM BELOW CEILING)
	EXHAUST FAN
	FAN REGULATOR
	SW BULB WITH COVERED
	CEILING FAN 1200MM DIA.
	AC INDOOR UNIT, CEILING CASSETTE TYPE
	OUTDOOR LIGHT

SHEET CONTENTS :

REVISION NOTES:

PROJECT:
CONSTRUCTION OF OPD
AREA AT N. ATOLL
HOSPITAL.

CLIENT:
MINISTRY OF HEALTH

LOCATION:
N. MANADHOO ISLAND

CONTENTS: AS GIVEN

PROJECT MANAGER:
DESIGNER: ARIZ
CIV/STR. ENGINEER:
SURVEYED BY: .
DRAWN BY: ARIZ
CHECKED BY:
DATE : FEBRUARY 2020
SHEET NO. : /

