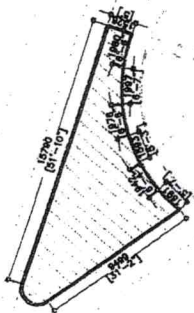


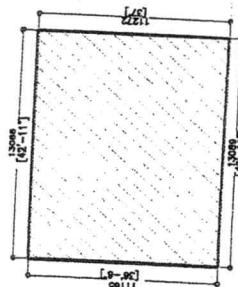
1 - CITY PARK (132)



132

ION 3 - SALAAHUDDEN BUILDING (170)

170



AMEENEE MAGU

ND

PROPOSED TEMPORARY LAND FOR OUTDOOR GYM
 PROX AREA = 1000 - 1500 SQFT

DEVELOPMENT CONTROLS
 - STRICTLY FOR ALLOCATED USE ONLY

MINISTRY OF NATIONAL PLANNING AND INFRASTRUCTURE

AMEENEE MAGU, HANFANNU 20392, MALÉ, REPUBLIC OF MALDIVES
 TEL: 3004300 FAX: 3004301 email: spn@planning.gov.mv

TITLE:
 DEVELOPMENT CONTROLS FOR ALL SITES

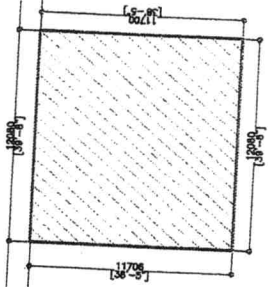
PROJECT:
 PROPOSED TEMPORARY LAND FOR OUTDOOR GYM

DRAWN BY: YR

SURVEYED BY:
SCALE:

LOCATION 2 - DHARUBAARUGE (344)

AMEENEE MAGU

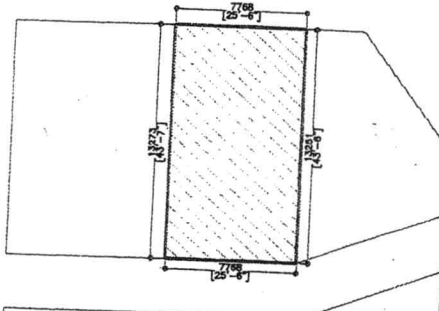


344

LOCATION 4 - BON'DIBAIY PARK (294)

MAJEEDHEE MAGU

294

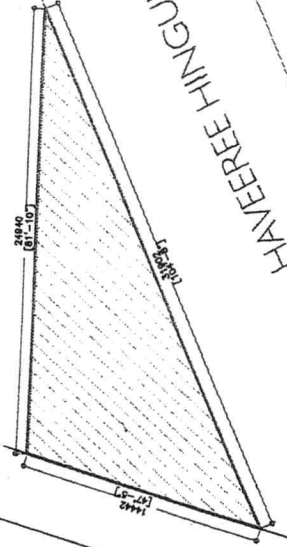


USES

- Outdoor Gym Facilities
- Open Recreational Use

LOCATION 4 - WEST PARK (395)

395



HAVEREER HINGUN

Map of MALÉ

