

ANNEX 1

		NOS required	vendor	
			rate	total
Waiting Bay 1	1.1 4 Seater Waiting Chair with Armrest	16		-
	1.2 3 Seater Waiting Chair with Disabled Symbol	3		-
	1.3 Waste Bins with Revolving Lid 50 Liters	2		-
Waiting Bay 2	2.1 4 Seater Waiting Chair with Armrest	16		-
	2.2 3 Seater Waiting Chair with Disabled Symbol	3		-
	2.3 Waste Bins with Revolving Lid 50 Liters	2		-
Ticketing Counter	3.1 Adjustable Chairs / Executive Low Back with Casters and Back Support	5		-
	3.2 Air conditioner split type 12000 btu	1		-
Feeding Pod	4.1 Comfortable Single Seater Sofa / synthetic leather finish	2		-
	4.2 Coffee Table L=600 x W=600 x H=600	2		-
	4.3 Refillable Soap Dispenser Wall Mount	1		-
Womens Toilet	5.1 Wash Basin Refillable Soap Dispenser Wall Mount	2		-
	5.2 Waste Bins with Foot Pedal Lid 10 Liters	4		-
	5.3 Sanitary Napkin Desposal Bin	4		-
	5.4 Womens Prayer Room Carpet Laying with cornice	11		-
Mens Toilet	6.1 Wash Basin Refillable Soap Dispenser Wall Mount	2		-
	6.2 Waste Bins with Foot Pedal Lid 10 Liters	4		-
	6.3 Mens Prayer Room Carpet Laying with cornice	11		-
Accesible Toilet / Disabled	7.1 Wash Basin Refillable Soap Dispenser Wall Mount	1		-
	7.2 Waste Bins with Foot Pedal Lid 10 Liters	1		-
	7.3 Standard Handrails / Foldable	1		-
Out Door Areas	8.1 Trash bins with Wheels 100 liters and Lid - Green Color for Recycle Waste	10		-
	8.2 Trash bins with Wheels 100 liters and Lid - Yellow Color for General Waste	10		-
	8.3 Out Door Water Proof Mat 3M 900 x 1200	6		-
Additional Items	#### ## Electric Powered Water Purifiers with hot/cold outlets and cup holder, with water supply &waste drain connection	2		-
	#### ## Name board, Waiting Bay 1 (english and dhivehi) (*1)	1		-
	#### ## Name board, Waiting Bay 2 (english and dhivehi) (*2)	1		-
	#### ## Name board Ticketing counter (*3)	1		-
	#### ## Name board office 1 (*4)	1		-
	#### ## Name board office 2 (*5)	1		-
	#### ## Disable toilet board/sign (*6)	1		-
	#### ## Men's wash area board (*7)	1		-
	#### ## Women's wash area board/sign (*13)	1		-
	#### ## Café area name board (*8)	1		-
	9.11 Retail Shop name board (*9)	1		-
	9.12 Convenience store name board (*10)	1		-
	9.13 Men's prayer room board/sign (*11)	1		-
	9.14 Women's prayer room board/sign (*12)	1		-
	9.15 Mother's room name board (*14)	1		-
	9.16 Drinks stall name board (*15)	1		-
	9.17 Serving area name board (*16)	1		-
	9.18 Mother's room Air conditioner 12000 btu	1		-

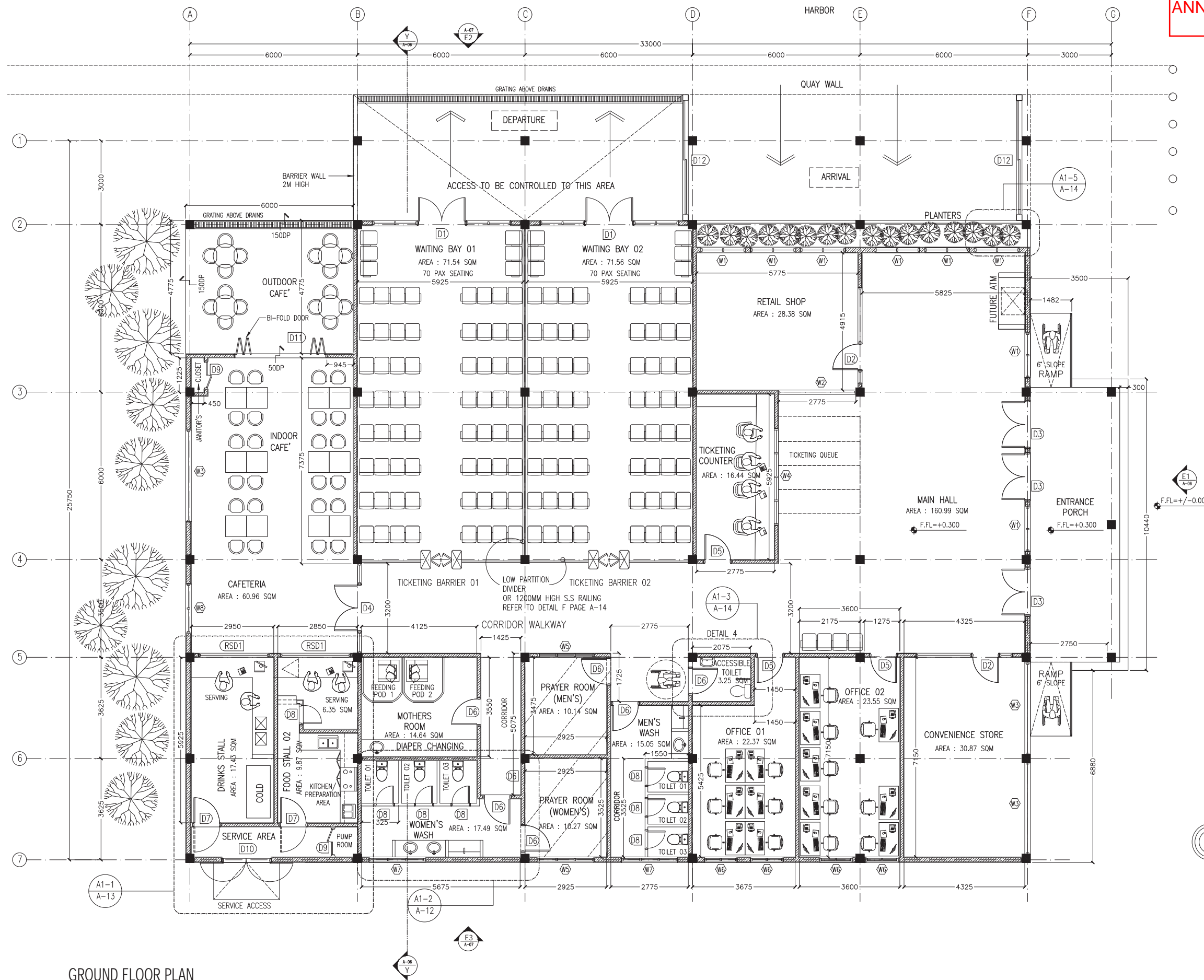
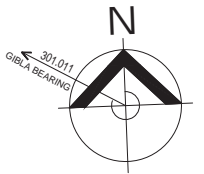
*1, *2, *3, *4, *5, *8, *9, *10, *14, *15, *16

Name board shall be made in both Dhivehi and English language font size English no less than 70 points, Dhivehi no less than 100 points, Boards should be of 3mm plastic with lettering To be approved by MNPHI prior to fabrication

*6, *7, *11, *12, *13

Boards/signs shall be of typical illustration/symbols, Boards should be of 3mm plastic with lettering To be approved by MNPHI prior to fabrication

ANNEX 2



KEY /LEGEND NOTES

	25-50 DROPS
	FINISHED FLOOR LEVELS
	FLOOR TRAPS
	GRATING ABOVE DRAINS
	200MM THK BLOCK MASONRY WALL (All EXTERIOR WALLS)
	150MM THK MASONRY WALL
	100MM THK MASONRY WALL
	SEMI AUTO TURNSTILE GATE ROD LENGTH: 500 MM (STANDARD). TURNSTILE SIZE AND ARM LENGTH CAN BE CUSTOMIZED ACCORDING TO CUSTOMERS REQUEST.

- NOTES:**
- CONMIX MOYA PROOF WS2 WATER PROOFING TO BE PROVIDED IN TOILETS
 - PROVIDE 50MM THICK WATER PROOFED SCREEDING
 - USE CONMIX C500 TILE ADHESIVE TO FIX ALL FLOOR AND WALL TILES
- FINISHES:**
- FLOOR TILES- 300MM X 300MM NON SKID CERAMIC FLOOR TILES WITH CONMIX C-800 TILE ADHESIVE
 - ACRYLIC EMULSION PAINT ON WALLS (PAINT SYSTEM TO BE USED : SEALER, PREMIER, TOPCOAT)
 - TOILET FLOORS- 300MM X 300MM NON SKID CERAMIC FLOOR TILES
 - ALL INTERIOR CEILINGS TO BE FINISHED WITH CONMIX CONPUTY (INTERIOR FINISH) WITH EMULSION PAINT AND ALL EXTERIOR CEILINGS TO BE FINISHED WITH CONMIX CONPUTY (EXTERIOR FINISH) WITH EMULSION PAINT
 - TOILET WALLS - 300MM X 600MM CERAMIC WALL TILES UP TO CEILING HEIGHT WITH CONMIX C-500 TILE ADHESIVE. USE BAL ENDURA SUPER GROUT OF APPROPRIATE COLOR FOR GROUTING BETWEEN TILES OF 2MM SPACING
 - ADD CONMIX MEGA FLOW MP TO ALL EXTERNAL PLASTER AND FOR WET AREA PLASTER

GROUND FLOOR PLAN
SCALE: 1:100