

PROJECT: LOT 11646 (D4-8) - OFFICE BUILDING

Scale: N.T.S

Drawn by: Jilan

Checked by:

Date: 8th July 2020

Remarks:

DRAWING: LOCATION MAP

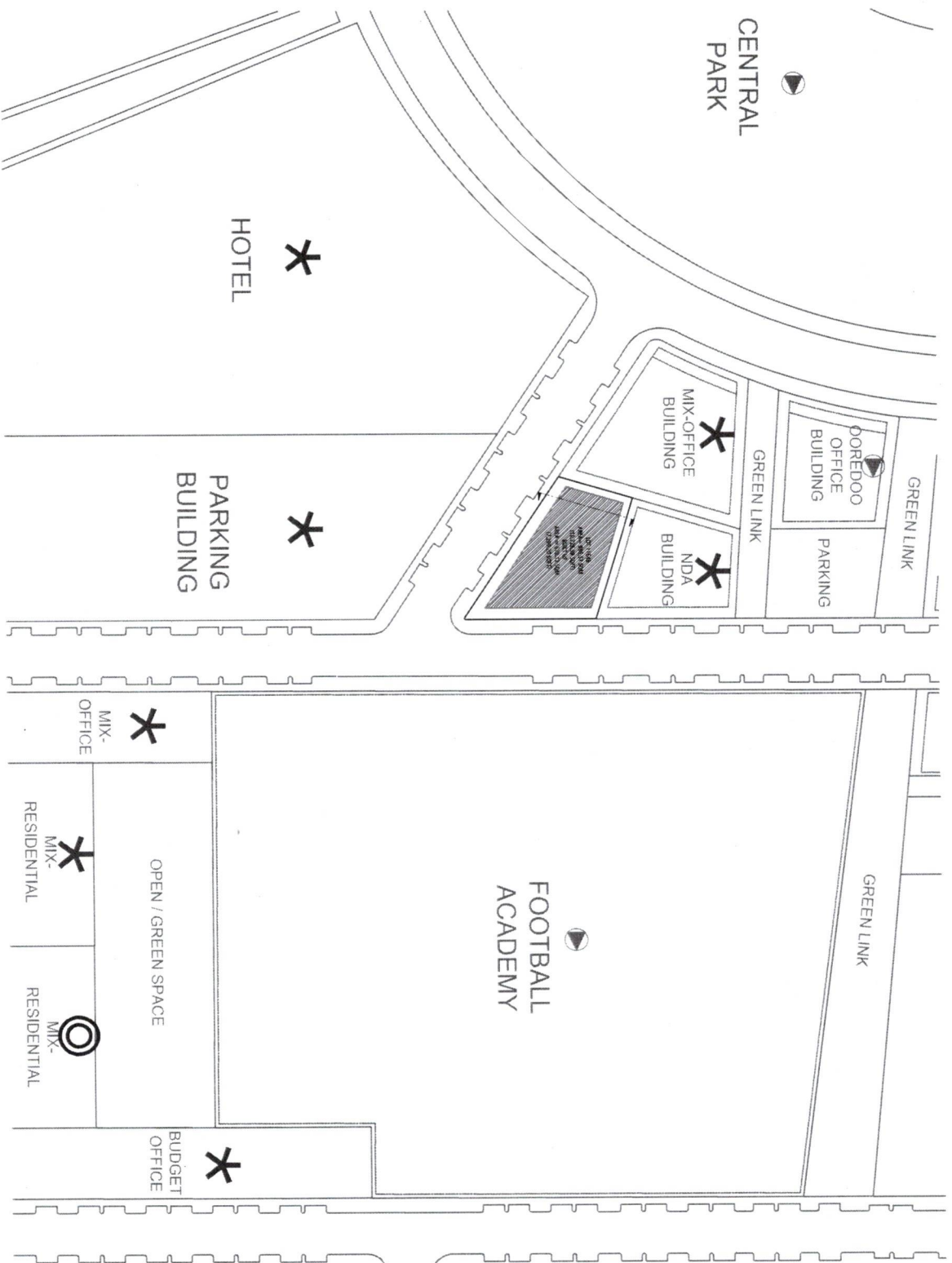


**HOUSING
DEVELOPMENT
CORPORATION**

PLANNING AND DEVELOPMENT DEPARTMENT
3RD FLOOR, HDC BUILDING HULHUMALE
REPUBLIC OF MALDIVES

TEL: +(960)3335353, FAX +(960)3335882

EMAIL: planning@hdc.com.mv



- LEGEND:
- ⊙ COMPLETED
 - ◐ ONGOING
 - * PLANNED



PROJECT: LOT 11646 (D4-8) - OFFICE BUILDING
Scale: N.T.S

Drawn by: Jilan

Checked by:

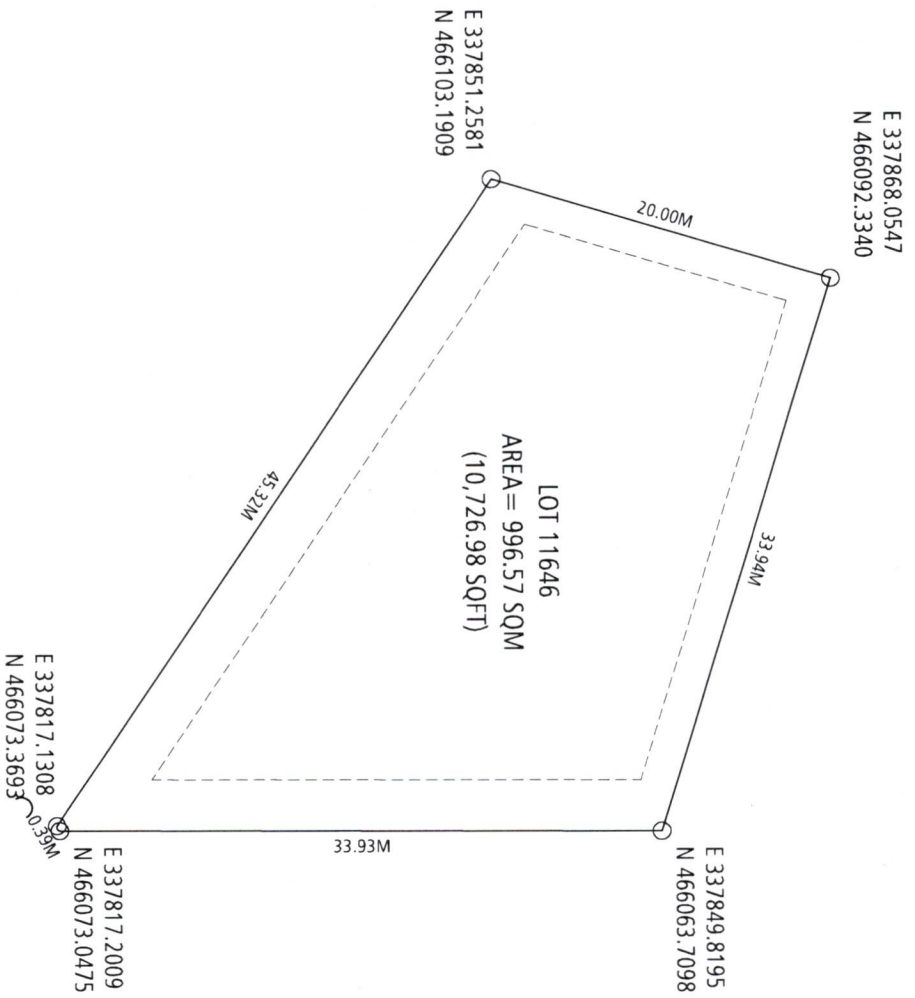
Date: 8th July 2020

Remarks:

DRAWING: SITE PLAN



PLANNING AND DEVELOPMENT DEPARTMENT
3RD FLOOR, HDC BUILDING HULHUMALE
REPUBLIC OF MALDIVES
TEL: +960/3353535, FAX: +960/3358882
EMAIL: planning@hdc.com.mv



PROJECT: LOT 11646 (D4-8) - OFFICE BUILDING

Scale: N.T.S

Drawn by: Jilan

Checked by:

Date: 8th July 2020

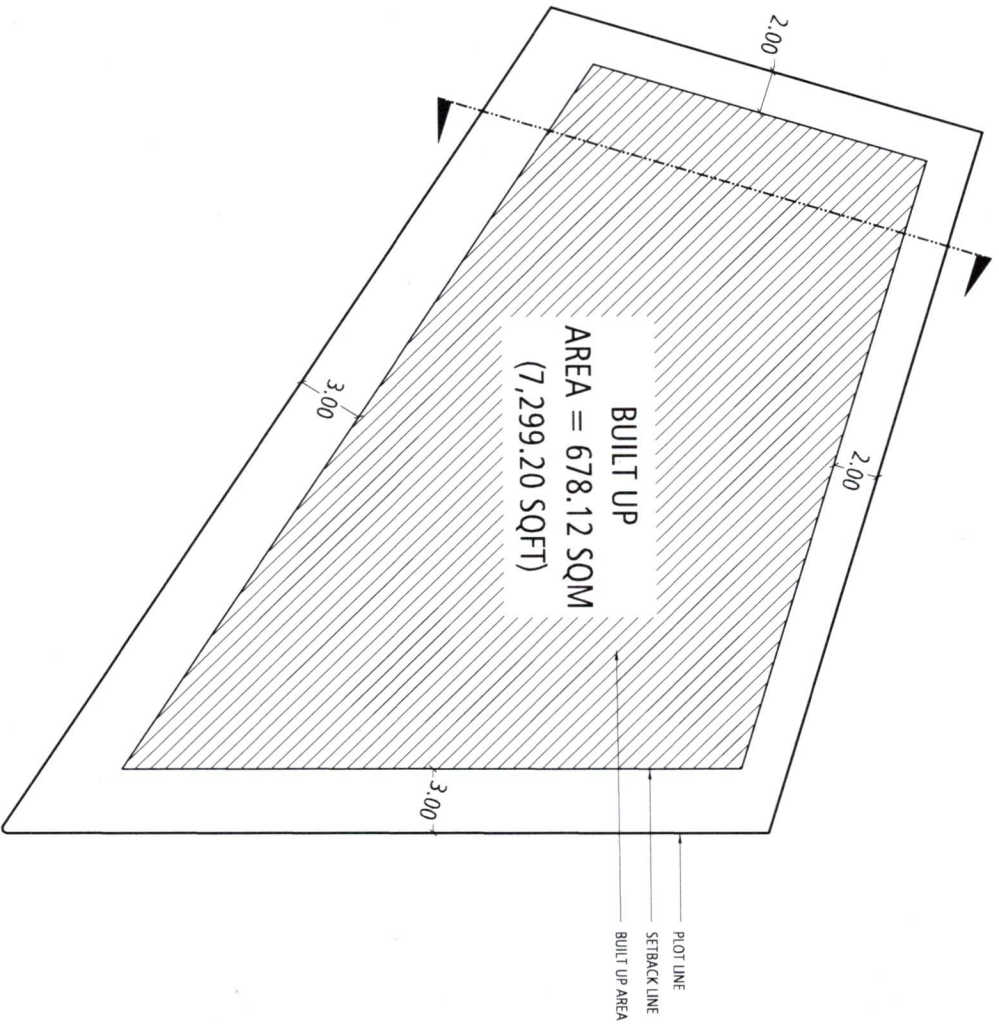
Remarks:

DRAWING: PLOT MAP



HOUSING
DEVELOPMENT
CORPORATION

PLANNING AND DEVELOPMENT DEPARTMENT
3RD FLOOR, HOC BUILDING HILHUMALE
REPUBLIC OF MALDIVES
TEL: +(960)3353535, FAX: +(960)3358892
EMAIL: planning@hdc.com.mv



Lot Number	Parcel Number	Description	Land Use	Plot Area	Foot Print	Gross Floor Area (G.F.A)	Plot Ratio (F.S.I)	Site Coverage	Max Height / Floors
11646	D4-8	Mixed Office Building	Mix-Office	996.57 SQM 10,726.98 SQFT	678.12 SQM 7,299.20 SQFT	3,254.97 SQM 35,036.16 SQFT	3.27	68%	6 Floors / 23.2m 19.2m bldg + 4m Lift Machine Room

PROJECT: LOT 11646 (D4-8) - OFFICE BUILDING

Scale: N.T.S

Drawn by: Jilan

Checked by:

Date: 8th July 2020

Remarks:

DRAWING: SETBACK PLAN



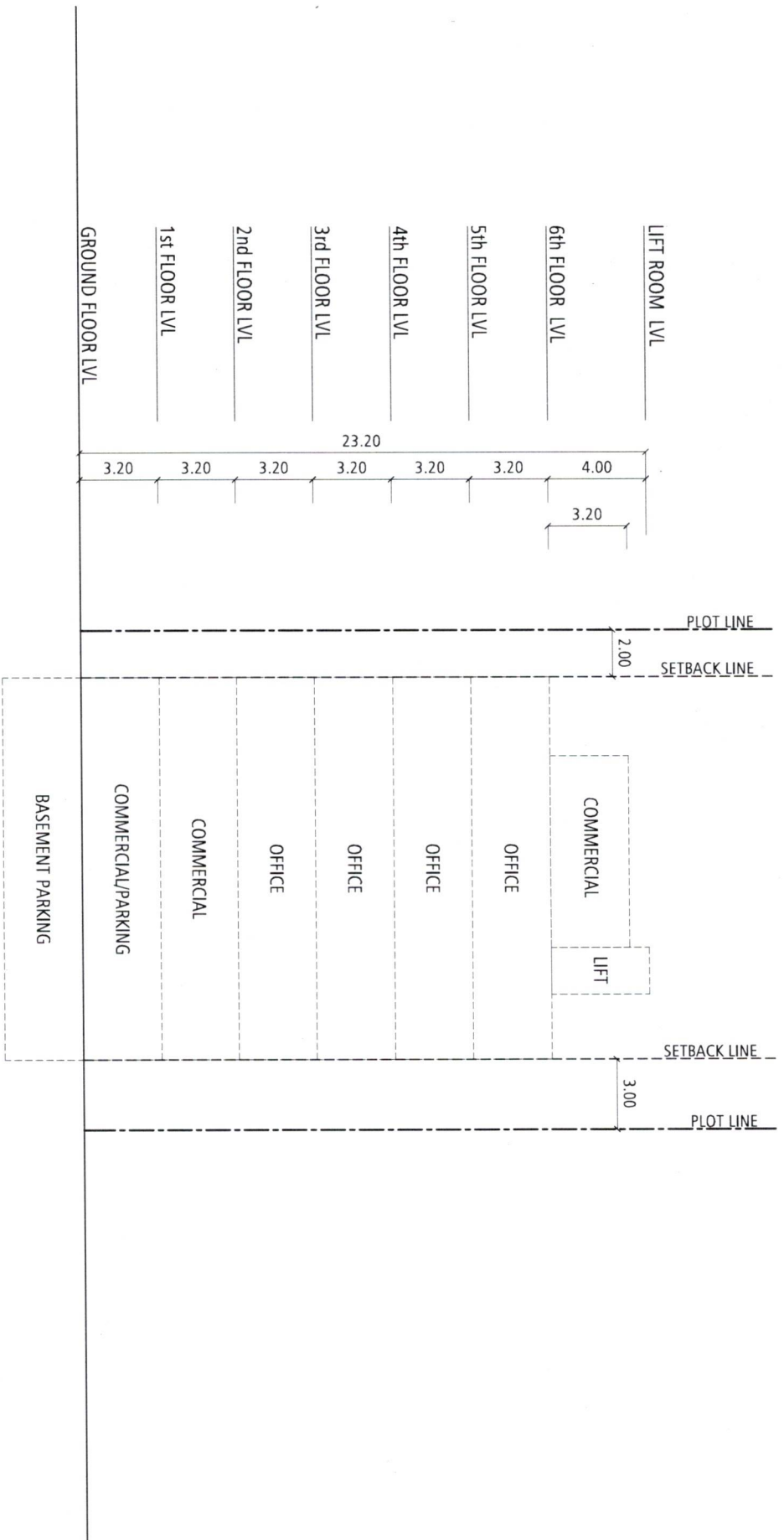
HOUSING
DEVELOPMENT
CORPORATION

PLANNING AND DEVELOPMENT DEPARTMENT
3RD FLOOR, HDC BUILDING HULHUMALE

REPUBLIC OF MALDIVES

TEL: +960(0)3353535, FAX: +960(0)3388892

EMAIL: planning@hdc.com.mv



Lot Number	Parcel Number	Description	Land Use	Plot Area	Foot Print	Gross Floor Area (G.F.A)	Plot Ratio (F.S.I)	Site Coverage	Max Height / Floors
11646	D4-8	Mixed Office Building	Mix-Office	996.57 SQM 10,726.98 SQFT	678.12 SQM 7,299.20 SQFT	3,254.97 SQM 35,036.16 SQFT	3.27	68%	6 Floors / 23.2m 19.2m bldg + 4m Lift Machine Room

PROJECT: LOT 11646 (D4-8) - OFFICE BUILDING

DRAWING: CONCEPTUAL SECTION

Scale: N.T.S

Drawn by: Jilan

Checked by:

Date: 8th July 2020

Remarks:



**HOUSING
DEVELOPMENT
CORPORATION**

PLANNING AND DEVELOPMENT DEPARTMENT
3RD FLOOR, HDC BUILDING HILLHUALA

REPUBLIC OF MALDIVES

TEL: +(960)3353535; FAX: +(960)3358892

EMAIL: planning@hdc.com.mv