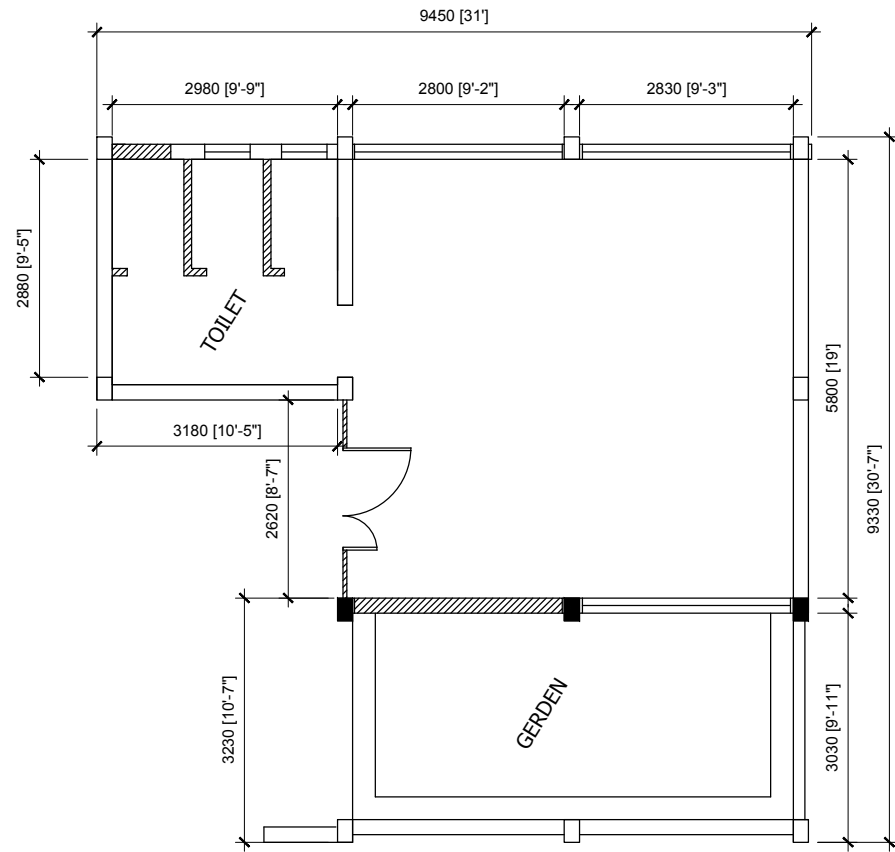
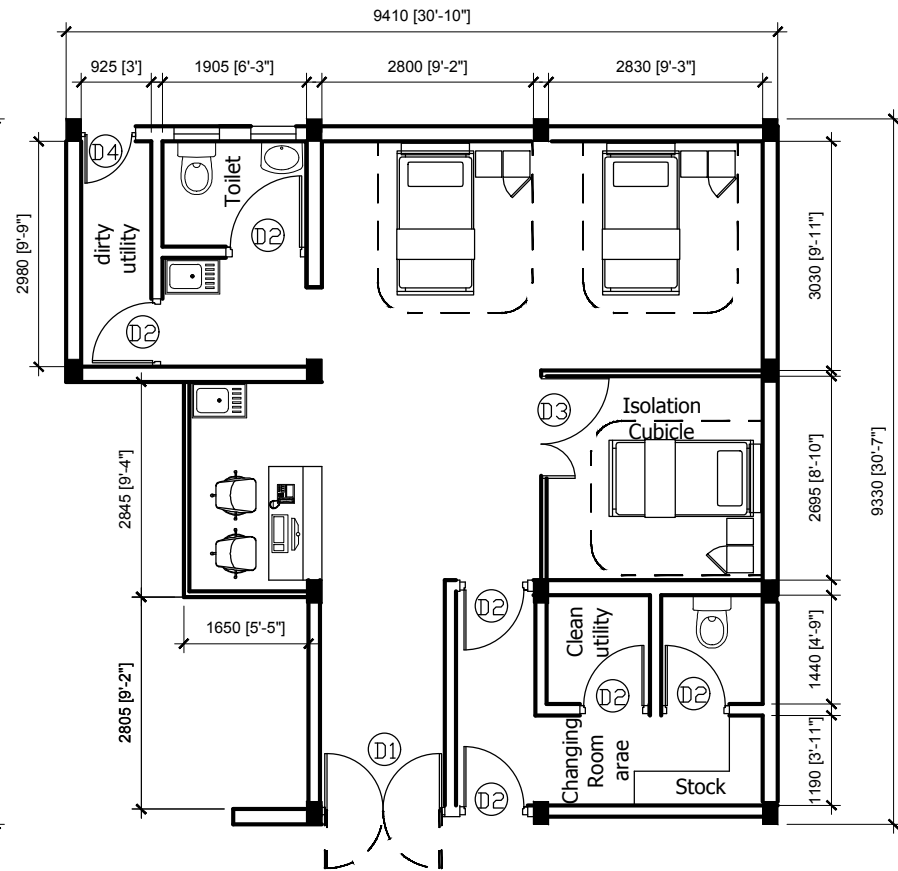


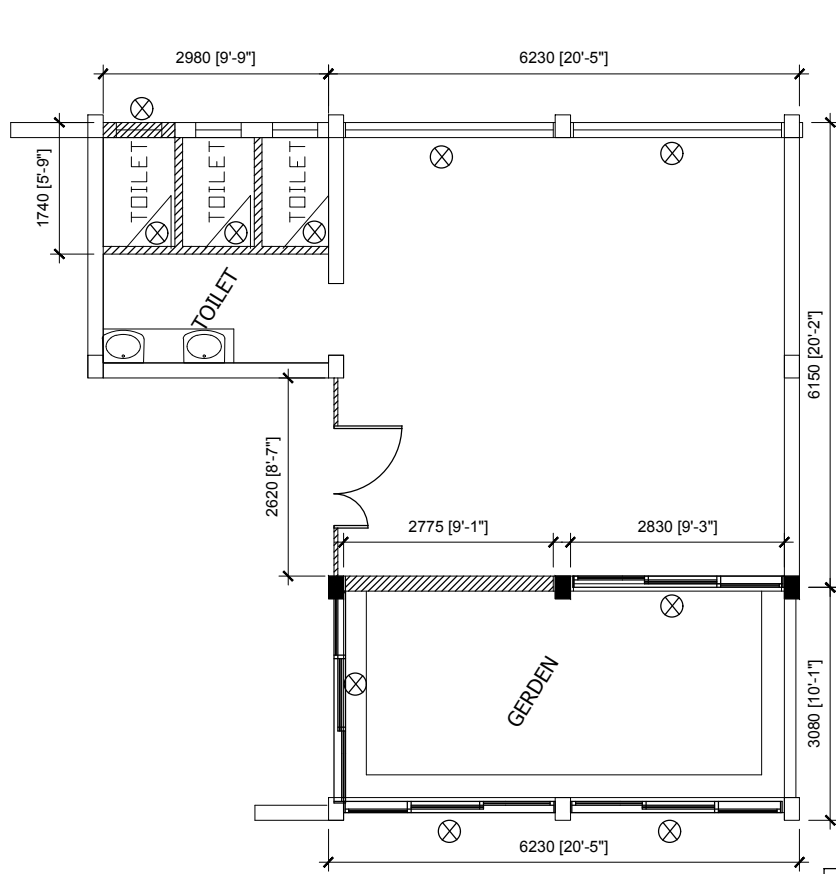
LH. ATOLL HOSPITAL MAIN BUILDING



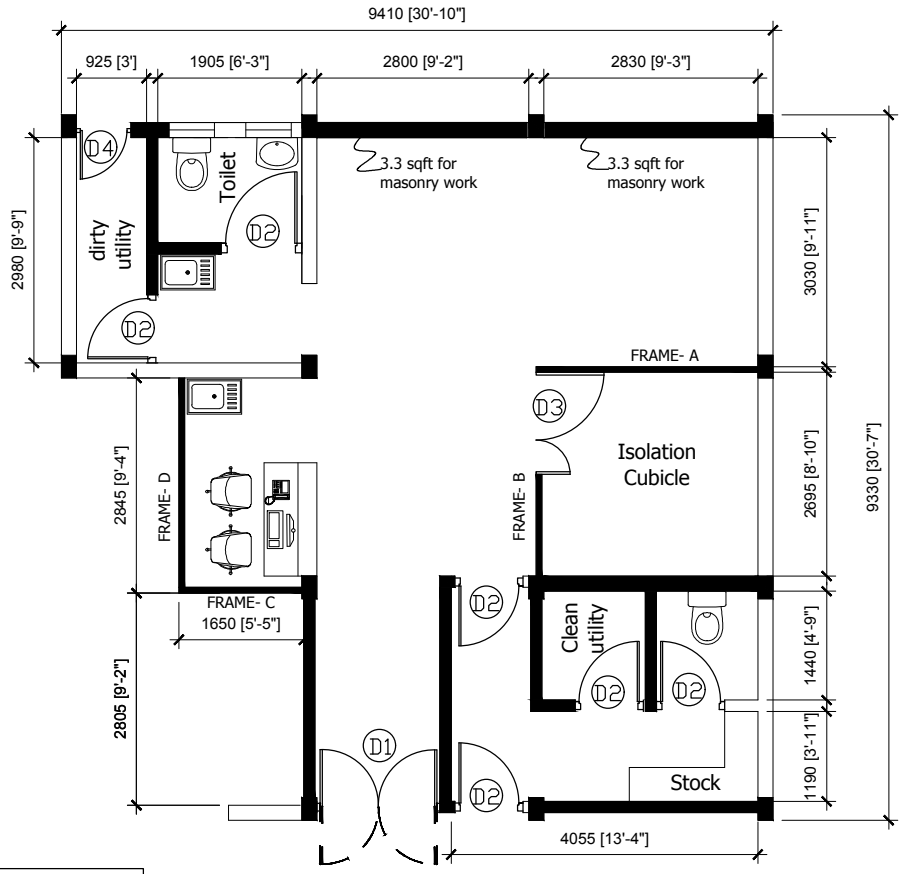
EXISTING FLOOR PLAN






PROPOSED DIALYSIS FLOOR PLAN

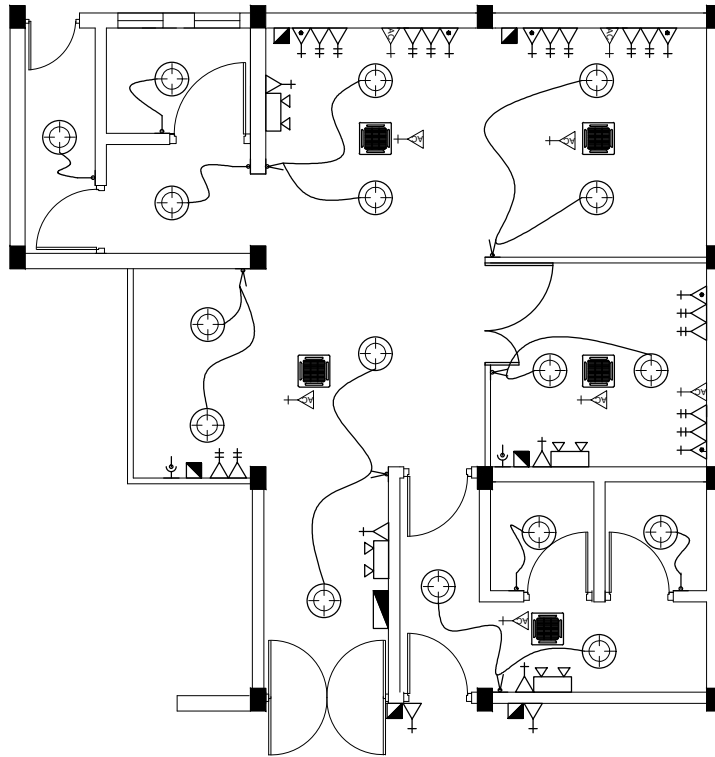


EXISTING WALL & DOORS PLAN



PROPOSED WALL & DOORS PLAN

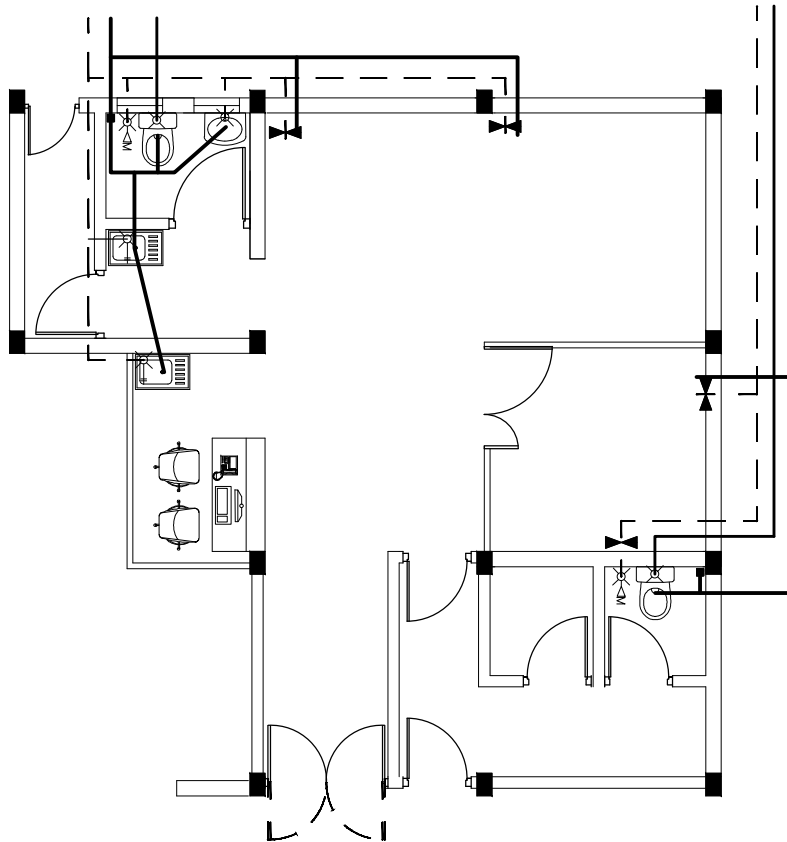
	Demolished wall
	New wall
	Remove door and window



ELECTRIC PLAN

LEGEND

SYMBOL	DESCRIPTION
	LED BULB WITH 150MM DOWN LIGHT
	1 x 13 AMP SOCKET OUTLET (300MM BLW, CEILING)
	2 x 13 AMP SOCKET OUTLET (600MM ABOVE FFL)
	1 x 15 AMP SOCKET OUTLET (600MM ABOVE FFL)
	1 x 15 AMP AC SOCKET OUTLET (300MM BLW, CEILING)
	TWO GANG SWITCH
	ONE WAY SWITCH
	EMERGENCY LIGHT
	DISTRIBUTION BOARD (WALL EMBEDDED)
	AC INDOOR UNIT, CEILING CASSETTE TYPE
	TELEPHONE SOCKET
	NETWORK SOCKET

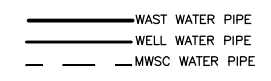


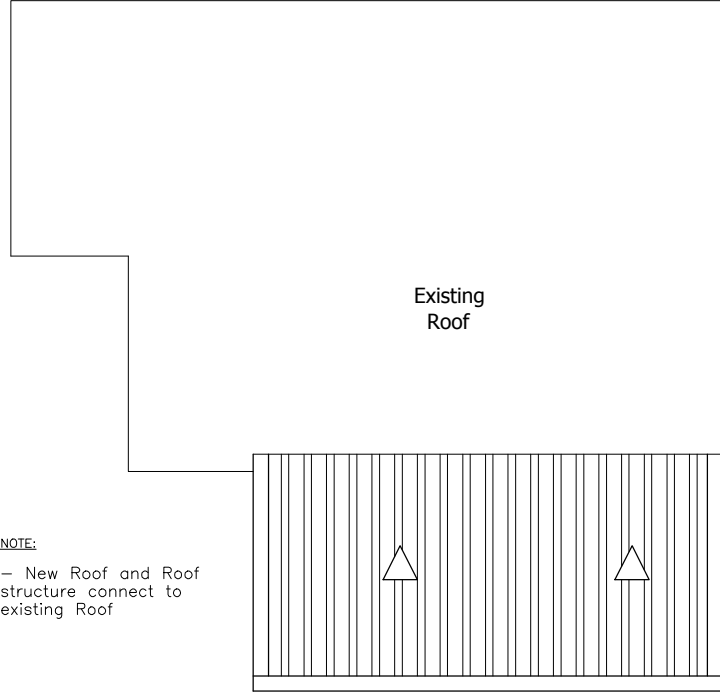
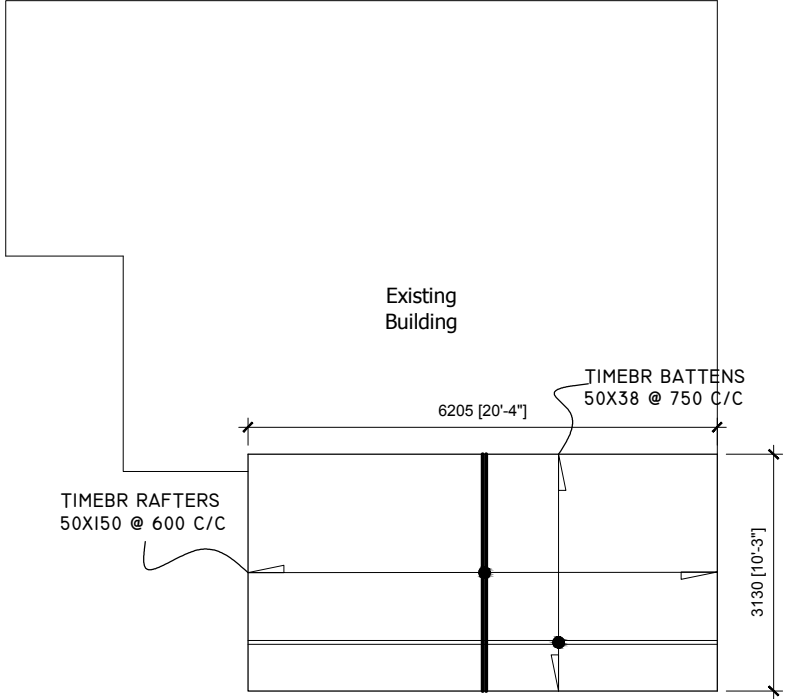
PLUMBING LAYOUT

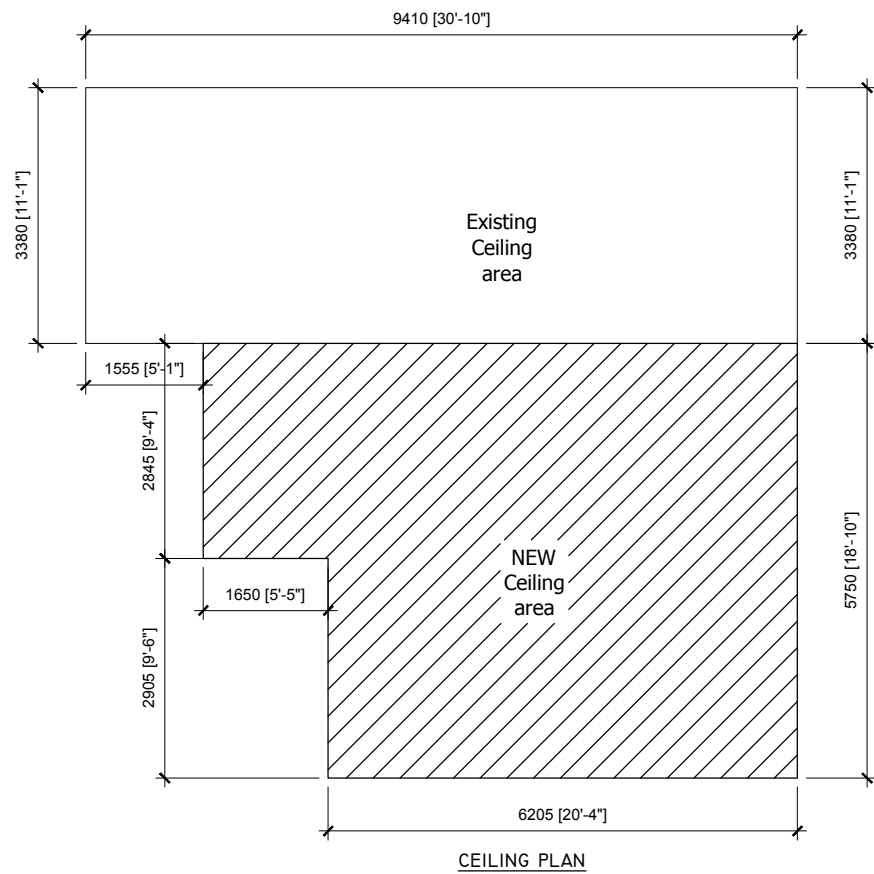
NOTE:

- THE CONNECTION TO THE TAPS SHOULD BE THROUGH A FAUCET ELBOW.
- ALL WELL WATER CONNECTIONS TO THE TOILET SHOULD BE CONTROLLED BY SINGLE BALL VALVE

■	FLOOR DRAIN
⊗	SHOWER
⊗M	MUSLIM SHOWER
⊗	FAWCET
⊗	STOP VALVE
⊗	ELBOW OPERATED TAP

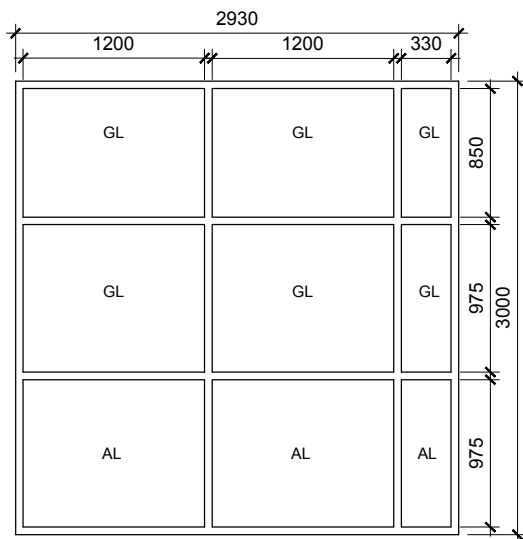






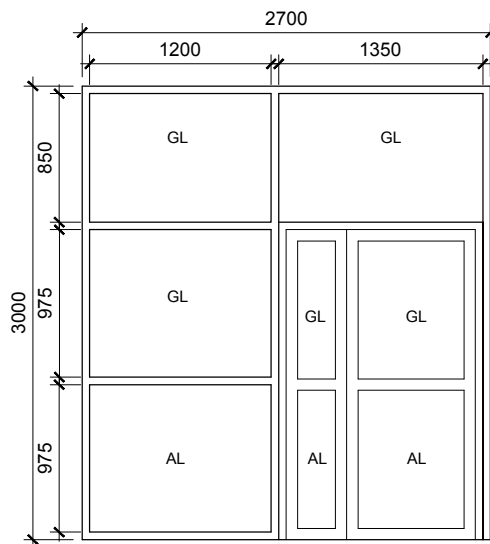
LABEL		D1	D2	D3	D4
PLAN					
ELEVATION					
FRAMES:	MATERIAL	ALUMINIUM	ALUMINIUM	ALUMINIUM	ALUMINIUM
	FINISH	ANODIZED	ANODIZED	ANODIZED	ANODIZED
PANEL:	MATERIAL	ALUMINIUM	ALUMINIUM	ALUMINIUM	ALUMINIUM
	FINISH	ANODIZED	ANODIZED	ANODIZED	ANODIZED
GLASS COLOUR		WHITE CORTED	WHITE CORTED	WHITE CORTED	WHITE CORTED

DOOR/WINDOW SHCHEDULE -1
SCALE - 1:50

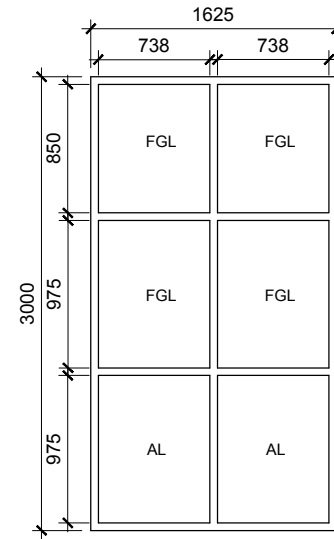


FRAME - A

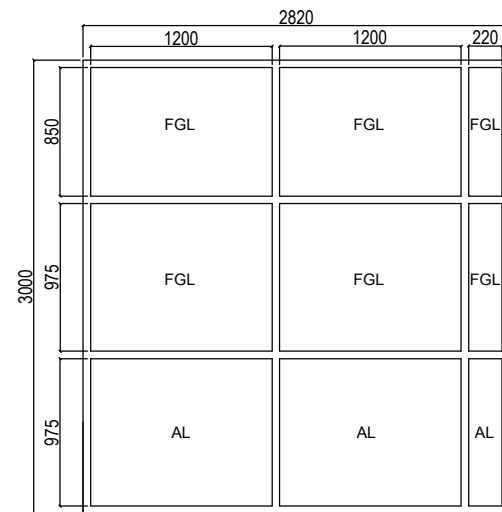
AL: Aluminium Sheet
 GL: Clear Glass
 FGL: Forested Glass



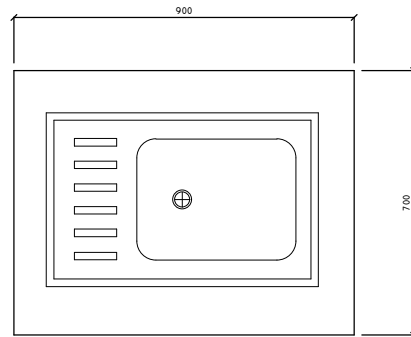
FRAME - B



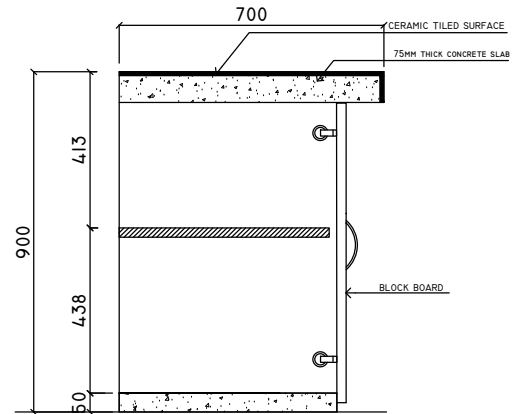
FRAME - C



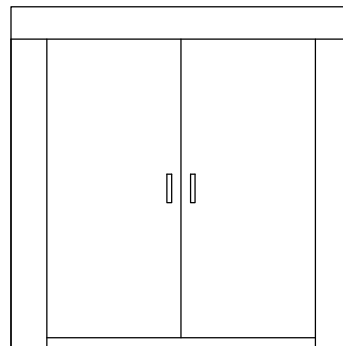
FRAME - D



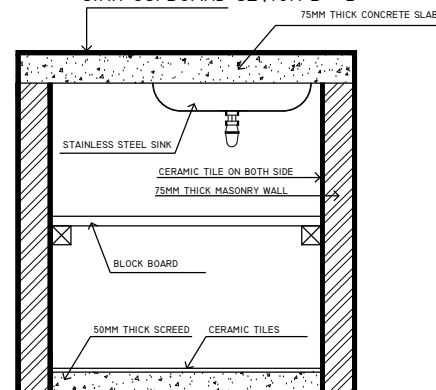
SINK TOP VIEW



SINK CUPBOARD SECTION B - B



SINK CUPBOARD REAR VIEW



NOTE: PLEASE CHECK ALL
MESUREMENTS ON SITE BEFOR CARRYING
OUT WORK

SAMPLE PREPARING AREA