

2021-2022 1000000000 2021-2022 1000000000 2021-2022 1000000000
2021-2022 1000000000 2021-2022 1000000000 2021-2022 1000000000

- 2021-2022 1000000000 2021-2022 1000000000 2021-2022 1000000000
- 2021-2022 1000000000 2021-2022 1000000000 2021-2022 1000000000
- 2021-2022 1000000000 2021-2022 1000000000 2021-2022 1000000000
- 2021-2022 1000000000 2021-2022 1000000000 2021-2022 1000000000
- 2021-2022 1000000000 2021-2022 1000000000 2021-2022 1000000000
- 2021-2022 1000000000 2021-2022 1000000000 2021-2022 1000000000

26 2021



Design, supply & installation of CCTV in mini sports Complex

Required minimum specification

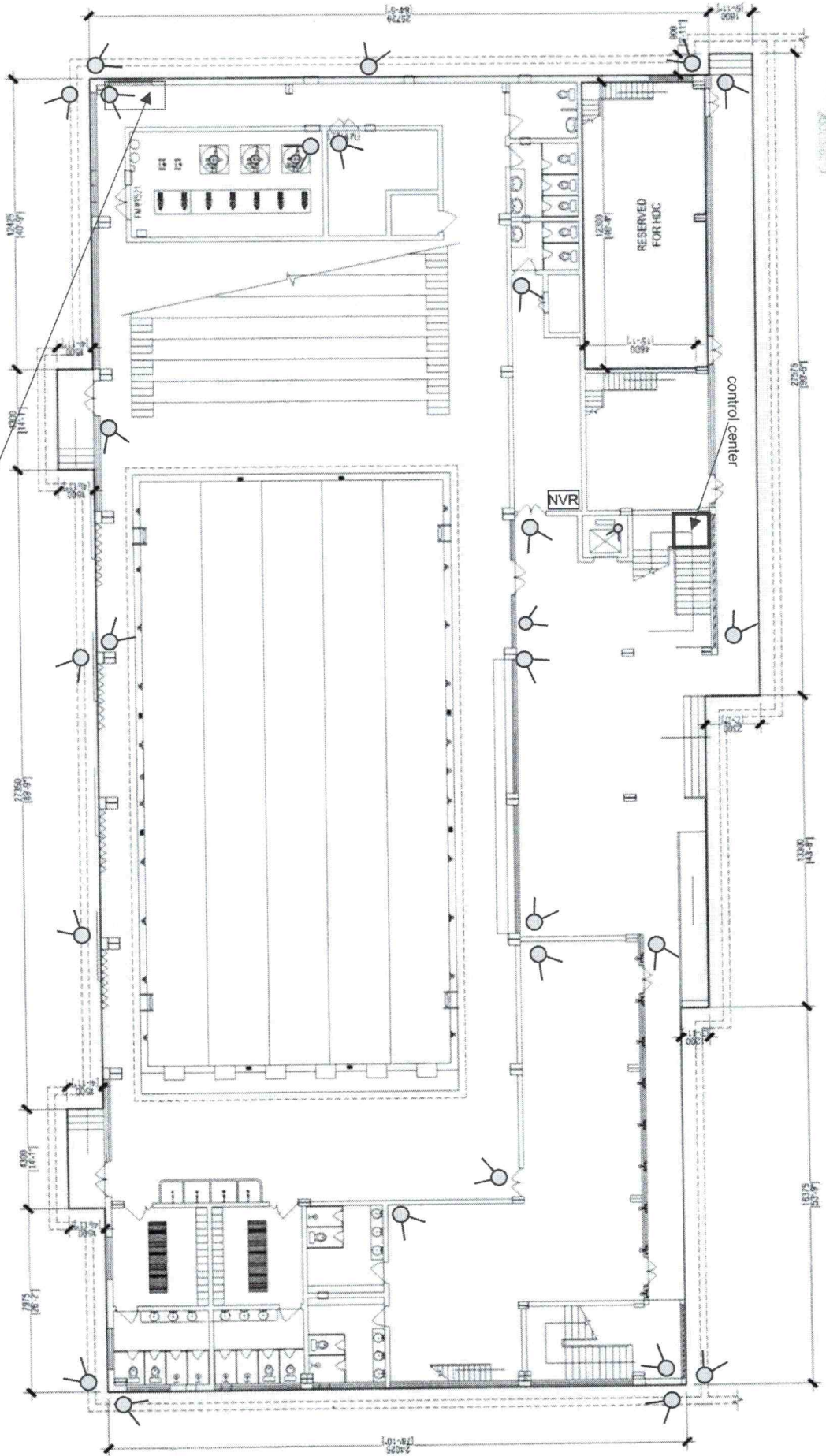
Hik vision CCTV Camera (dome & bullet camera)	<ul style="list-style-type: none"> • 6MP network IP camera • Must support onvif • Wide angel view (2.8mm) Lenses • Low lumens • Power via POE • On- Board Storage • Weatherproof • Vandal-Resistant • H.265+ • EXIR • WDR
Hik vision Lift camera	<ul style="list-style-type: none"> • 6MP network IP camera • Must support onvif • Wide angel view (2.8mm) Lenses • Low lumens • Power via POE • On- Board Storage • Weatherproof • Vandal-Resistant • H.265+
Network Cable	CAT6 UTP network Cables
TV	Minimum 75inch LED TV with Mounting Brackets X 2
UPS	Online 6KvA UPS system + 1hr backup (Control room)
Server Rack	48U Server Rack in Control room 9U network switch rack X 3
Life camera cable	CAT6 UTP network Cables
Fiber Optical Cable	4 core fiber Optic cable
NVR	<ul style="list-style-type: none"> • Must store minimum 30 Days of recording
Fiber Optic Switch	<ul style="list-style-type: none"> • Minimum 16x SFP port (with Transceivers)
POE Switch	<ul style="list-style-type: none"> • Minimum 2X SFP port (with Transceivers)

1. Ministry already has a Hik vision camera setup so we want to continue with Hik vision
2. All network and power cable must be labeled from both ends
3. All network cables must be crimp b standard
4. All materials required for the work must be purchased by the party who wins the bid
5. All network switches must be POE
6. Wiring and project document must be provided to ministry upon completion of the work.





Network Switch



Network Switch

