

**Tax
Appeal
Tribunal**

ދިވެހިސަރުކާރުގެ ގެޒެޓްގައި ބަޔާންކޮށްފައިވާ ގޮތުން

ޖުމްހޫރީ ސަރުކާރުގެ ގެޒެޓްގައި ބަޔާންކޮށްފައިވާ ގޮތުން 2015 ވަނަ އަހަރުގެ ޖުމްހޫރީ ސަރުކާރުގެ ގެޒެޓްގައި ބަޔާންކޮށްފައިވާ ގޮތުން

އިދިކޮޅު ނުވަތަ ސަރުކާރުގެ ގެޒެޓްގައި ބަޔާންކޮށްފައިވާ ގޮތުން (IUL)223/1/2021/36 (16 ސެޕްޓެމްބަރު 2021)



ޖުމްހޫރީ ސަރުކާރުގެ ގެޒެޓްގައި ބަޔާންކޮށްފައިވާ ގޮތުން
ދާއިރާ، ދިވެހިސަރުކާރުގެ ގެޒެޓްގައި ބަޔާންކޮށްފައިވާ ގޮތުން



1-4 - ڇوڪر ۽ سڃاڻپ ڇوڪر

(ر) ۾ ڏنل ڇوڪر ۽ سڃاڻپ ڇوڪر جي وٺڻ لاءِ ڇوڪر 3 ڏينهن جي اندر ڏيکارڻ گهرجن ٿا.

2 ڇوڪر جي اڻ ڇوڪر ڇوڪر

2-1 - ڇوڪر ۽ سڃاڻپ ڇوڪر ڇوڪر جي اڻ ڇوڪر ڇوڪر جي وٺڻ لاءِ ڇوڪر ڏيکارڻ گهرجن ٿا.

2-2 - ڇوڪر ۽ سڃاڻپ ڇوڪر ڇوڪر جي اڻ ڇوڪر ڇوڪر جي وٺڻ لاءِ ڇوڪر ڏيکارڻ گهرجن ٿا. (ڇوڪر 1 ڏينهن جي اندر ڏيکارڻ گهرجن ٿا).

2-3 - ڇوڪر ۽ سڃاڻپ ڇوڪر 1.1.4 ڏينهن جي اندر ڏيکارڻ گهرجن ٿا.

2-4 - ڇوڪر ۽ سڃاڻپ ڇوڪر ڇوڪر جي اڻ ڇوڪر ڇوڪر جي وٺڻ لاءِ ڇوڪر ڏيکارڻ گهرجن ٿا.

(ر) ڇوڪر ۽ سڃاڻپ ڇوڪر جي وٺڻ لاءِ ڇوڪر ڏيکارڻ گهرجن ٿا.

(ب) ڇوڪر ۽ سڃاڻپ ڇوڪر جي وٺڻ لاءِ ڇوڪر ڏيکارڻ گهرجن ٿا.

(س) ڇوڪر ۽ سڃاڻپ ڇوڪر جي وٺڻ لاءِ ڇوڪر ڏيکارڻ گهرجن ٿا.

(ڊ) ڇوڪر ۽ سڃاڻپ ڇوڪر جي وٺڻ لاءِ ڇوڪر ڏيکارڻ گهرجن ٿا.

(ه) ڇوڪر ۽ سڃاڻپ ڇوڪر جي وٺڻ لاءِ ڇوڪر ڏيکارڻ گهرجن ٿا.

(و) ڇوڪر ۽ سڃاڻپ ڇوڪر جي وٺڻ لاءِ ڇوڪر ڏيکارڻ گهرجن ٿا.

(ز) ڇوڪر ۽ سڃاڻپ ڇوڪر جي وٺڻ لاءِ ڇوڪر ڏيکارڻ گهرجن ٿا.

2-5 - ڇوڪر ۽ سڃاڻپ ڇوڪر ڇوڪر جي اڻ ڇوڪر ڇوڪر جي وٺڻ لاءِ ڇوڪر ڏيکارڻ گهرجن ٿا.

2-6 - ڇوڪر ۽ سڃاڻپ ڇوڪر ڇوڪر جي اڻ ڇوڪر ڇوڪر جي وٺڻ لاءِ ڇوڪر ڏيکارڻ گهرجن ٿا.

2-7 - ڇوڪر ۽ سڃاڻپ ڇوڪر ڇوڪر جي اڻ ڇوڪر ڇوڪر جي وٺڻ لاءِ ڇوڪر ڏيکارڻ گهرجن ٿا.

2-8 - ڇوڪر ۽ سڃاڻپ ڇوڪر 45 (سڀني ڏينهن) ڏينهن جي اندر ڏيکارڻ گهرجن ٿا.

2-9 - ڇوڪر ۽ سڃاڻپ ڇوڪر ڇوڪر جي اڻ ڇوڪر ڇوڪر جي وٺڻ لاءِ ڇوڪر ڏيکارڻ گهرجن ٿا.



3-1-2-3-4-5-6-7-8-9-10

- 3-1- 3-2- 3-3- 3-4- 3-5- 3-6- 3-7- 3-8- 3-9- 3-10-

4-1-2-3

- 4-1- 4-2- 4-3-

5-1-2-3

- 5-1- 5-2- 5-3-



2021

(IUL)223/1/2021/36 (16) 2021

.....

#	2021	2021
		2021
1		2021
2		2021
3		2021
4		2021
5		2021
6		2021
7		2021
8		2021
9		2021
		2021
1		2021
		2021
1		2021
2		2021
3		2021
4		2021

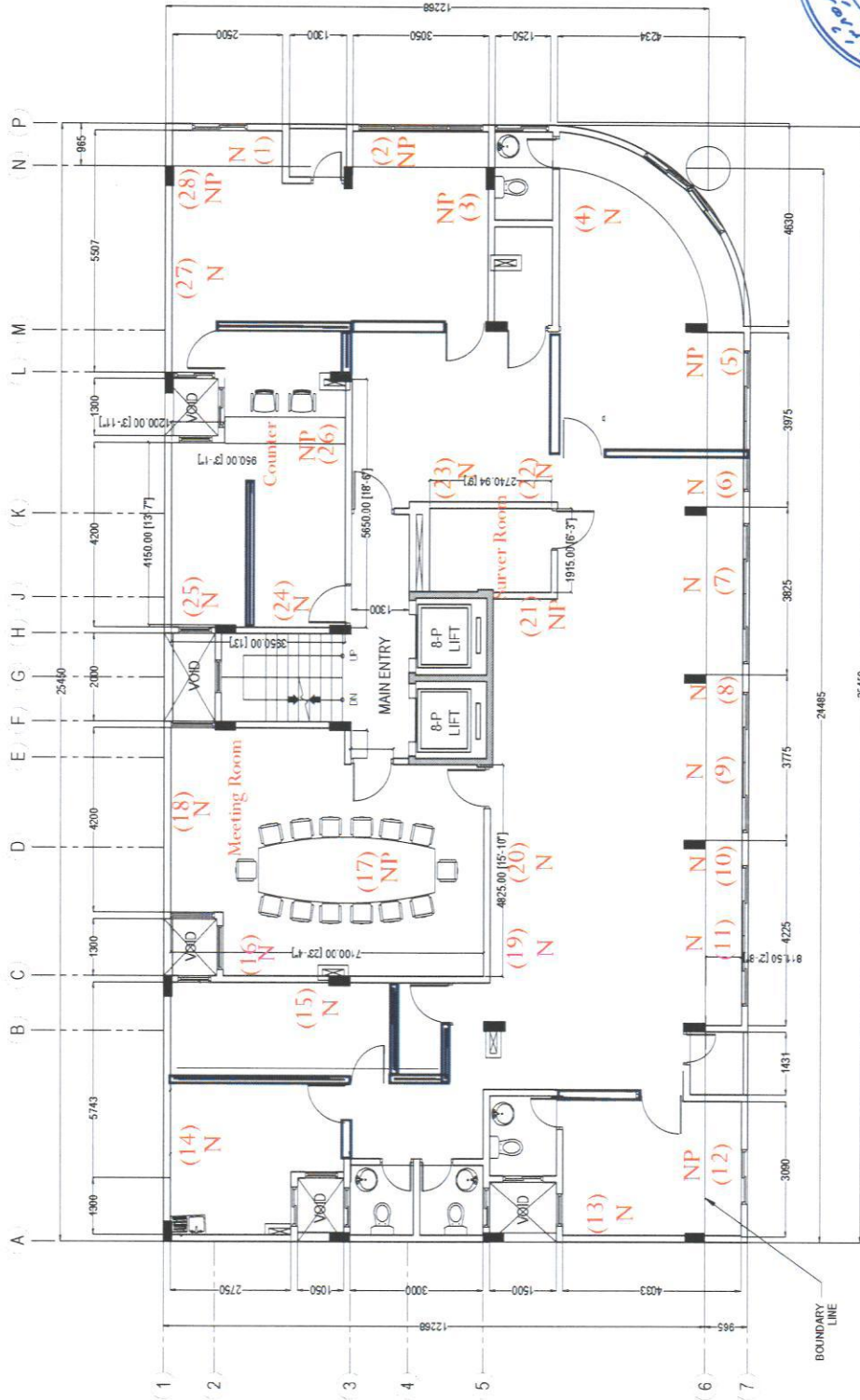
2021

.....





Annex 2



NP (Network and Phone)
 N (Network)

2ND FLOOR PLAN
 SCALE 1:100

1- Door Lock System (2nd Floor)

1. ZKTeco MA300 biometric fingerprint reader
 - a. FR1200, a fingerprint reader with RS485 communication interface (x2) (2nd and 3rd Floor)
 - b. Single door Electromagnetic lock
 - c. 12V DC Power supply with backup battery
 - d. Installation and configuration

2- CCTV Camera (2nd Floor)

1. Hikivision 4 MP WDR Fixed Network Camera (x2)
 - b. Network cabling, 2 points– (Cat-6)
 - c. Installation and Configuration

3- WIFI Access points (2nd Floor)

1. Ubiquiti Networks UAP-AC-PRO UniFi Access point (x4)
 - b. Network cabling, 4 points– (Cat-6)
 - c. Installation and configuration

4- Networking (2nd Floor)

1. 48 Port POE Manageable network switch (x2)
2. 24 Port Cat6 Patch Panel (x2)

5- PABX Setup for 2nd floor

1. Uplink cables from 3rd floor to 2nd floor
2. Total number of cables -5, Cat-5e (Uplink cables)
3. Connection from 3rd floor PABX to 2nd floor points
4. Installation of face plates (8 Points-Annex 2) (Plates will be provided)
5. Cable management, Casing works (Inside the server room)

6- Network Connections (2nd Floor)

1. Uplink cables from 3rd floor to 2nd floor – 2 Cables (Cat-6)
2. Moving server from 3rd floor to 2nd floor
3. Patching cables to server rack (Patch panel) with patch codes
4. Trace all network points
5. Installation of face plates (28 Points-Annex 2) (Plates will be provided)

