



Road Development Corporation Limited

Republic of Maldives

Terms of Reference for

Procuring a T650- Drive Motor for Bobcat Skid Loader

Date: 05th September 2021

1. BACKGROUND

Road Development Corporation Limited, an incorporated limited liability company operating under the registration number C10482019 and having its registered office at MSL Building, First Floor, Male', Republic of Maldives (herein after called and referred to as "the Employer"), wishes to receive bids for the Procuring a Bobcat Skid Loader – T650 Drive Motor.

2. DRIVE MOTOR SPECIFICATION

Type: Bobcat Skid Loader

MNR: R921812275

Typ: MCR10F1070F250Z32B5V1L48S F42S0395M

SN: 2409217

FD: 16W35 7481

3. SCOPE OF WORK

The employer will be financing for the Purchasing of T650- Drive Motor of Bobcat Skid Loader.

4. EXPECTED OUTPUTS

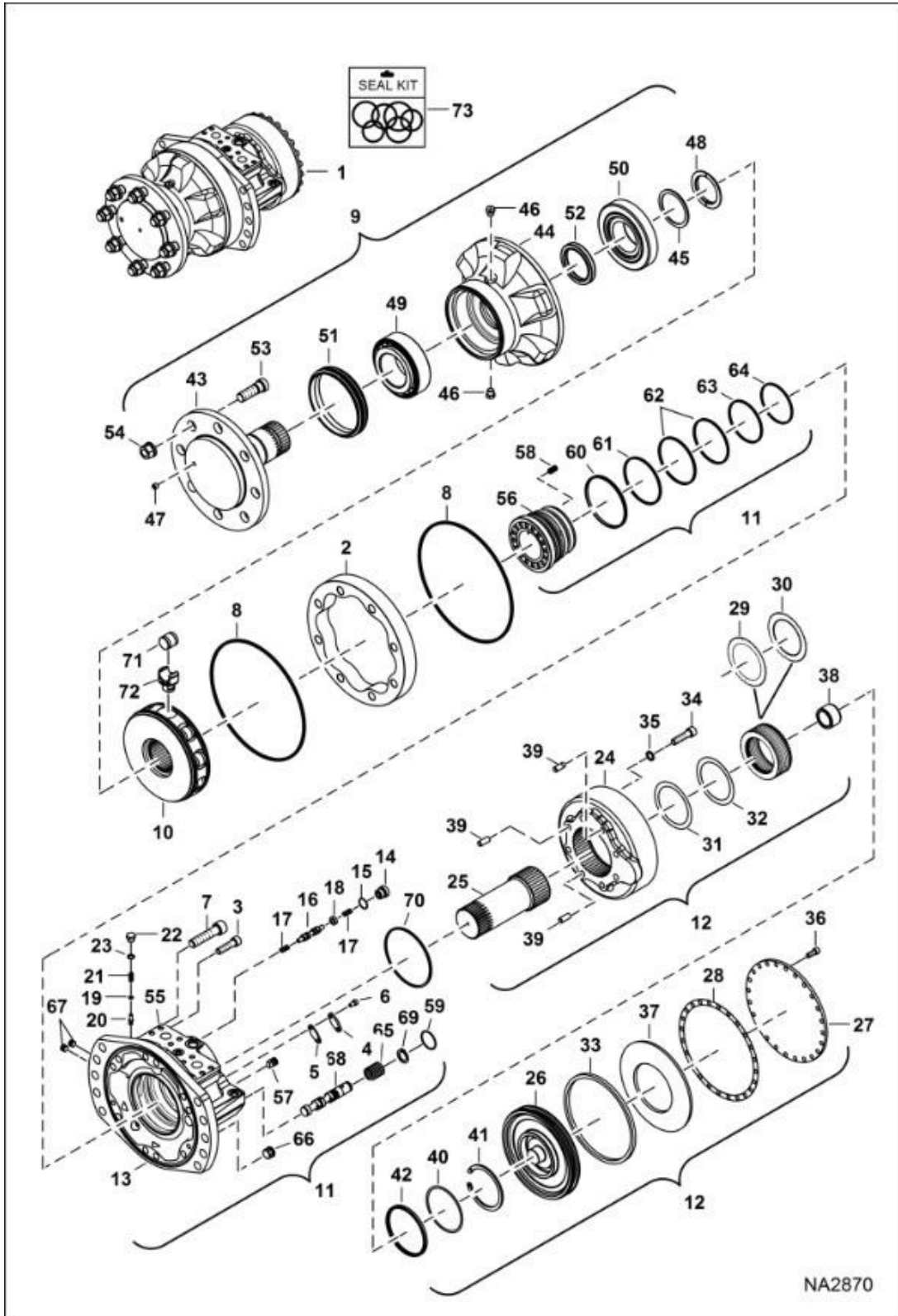
The expected outputs we wish to have in this will be updated in the catalogue 1-73. The catalogue will be attached with this.

5. SPECIFICATION

Title: Hydrostatic Motor & Brake (2-Speed)

Model Number: (S/N A3P011001 - A3P014874, A3P111001 - A3P112374)T650

Serial Number: A3P011001 & Above, A3P111001 & Above



Ref.	Part Number	Description	S/N	Qty
1		MOTOR, DRIVE HYD 2-SPD, MOTOR, DRIVE HYD 2-SPD, Model R921810899 - Ref. 2-70 - NLA - Use 7010257REM - Was 7010257, A		1
1	7010257REM	MOTOR, DRIVE HYD 2-SPD		1
1	7349882	MOTOR DRIVE HYDR 2-SPD		1
1	7349882REM	MOTOR DRIVE HYDR 2-SPEED		1
1		MOTOR, DRIVE HYD 2-SPD, MOTOR, DRIVE HYD 2-SPD, NLA - Model R921812129 - Ref. 2-70 - Was 7281453, D		1
2		CAM, CAM, NLA - Order motor - Was 7020889, A		1
3	7020890	BOLT		2
4	6688716	COVER		1
5	6688377	GASKET, Was 6688717, A		1
6	7020891	BOLT		2
7	7020892	BOLT		10
8	6676597	O-RING, Was 6691216, A		2
9	7020893	CASE, FRONT ASSY, Ref. 44-52 - does not include Ref. 53 or 54		1
10	7273676	BLOCK CYLINDER, Was 7024971, A		1
11	7020895	HOUSING, ASSY, Ref. 56-70		1
12	7020896	BRAKE, ASSY, Ref. 24-42		1
13	7020897	HOUSING		1
14	6691227	PLUG		1
15	6689133	O-RING		1
16	6675866	SPOOL, Was 6690041, A		1
17	6674841	SPRING, Was 6690042, D		2
18	6675867	WASHER, Was 6690043, D		1
19	6674343	SHIM, Was 6690044, D		1

Ref.	Part Number	Description	S/ N	Qty
20	6675868	POPPET, Was 6690045, A		1
21	6674344	SPRING, Was 6690046, D		1
22	6674345	PLUG, Was 6690047, D		1
23	6676038	O-RING, Was 6689132, D		1
24	7020898	HOUSING		1
25	7020899	SHAFT		1
26	6681638	PISTON, Was 6691230, A		1
27	6691098	COVER, Was 6691231, A		1
28	6674720	GASKET, MOTOR HYD, Was 6691232		1
29	6674713	BRAKE, DISC, inner		16
30	6674714	BRAKE, DISC, outer		21
31	6674722	SHIM, Was 6691235, A		1
32	6691236	SHIM		1
33	6674728	SEAL, RING, Was 6691237, A		1
34	6691238	BOLT		5
35	6674708	WASHER, Was 6691239, A		5
36	6689128	BOLT, Was 6691240, A		24
37	6678780	WASHER, Was 6691241, A		1
38	6674734	BUSHING, Was 6691243, A		1
39	6691244	PIN		3
40		O-RING, O-RING, A		1
41		SNAP RING, SNAP RING, W/O pin holes, A		1
42		SEAL, SEAL, A		1
42	7414710	SEAL BRAKE		1
42		O-RING, O-RING, A		1

Ref.	Part Number	Description	S/N	Qty
43	6674054	SHAFT, Was 7020900, A		1
44	7020901	HOUSING		1
45	6691208	KIT WASHER		1
46	7008700	PLUG		2
47	6680019	PLUG, Was 6691209, A		1
48	6660016	RING, SPLIT, Was 6691210, A		1
49	6660017	BEARING, Was 6689117, A		1
50	6660018	BEARING MOTOR DRIVE, Was 6689118, A		1
51	6691211	SEAL		1
52	6674056	SEAL, Was 6691212, A		1
53	7020902	STUD		8
54	7020903	NUT		8
55	7020904	ROLLER		8
56	7020905	DISTRIBUTOR		1
57	6660032	STOP PIN, Was 6691220, A		1
58	6660033	SPRING, Was 6691221, A		16
59	7020906	SEAL, Was 7020706, B,D		1
60	7020907	SEAL		1
61	7020908	SEAL		1
62	7020909	SEAL		2
63	7020910	SEAL		1
64	7020911	SEAL		1
65	7020912	SPRING		1
66	6689129	PLUG		1
67	7020913	PLUG		2

Ref.	Part Number	Description	S/N	Qty
68	7020914	SPOOL		1
69	7020915	CLIP		1
70	7020916	SEAL		1
71	7020904	ROLLER		1
72	7024972	PISTON, MOTOR		1
73	7024970	KIT, SEAL, Ref. 8, 15, 23, 28, 33, 40, 51, 52, 59-64 & 70		1