

ANNEX 1

RADIOLOGY DEPARTMENT GOWN & SCRUB LIST

#	DETAILS	QTY
1	PEDIATRIC GOWN (OPEN) - SHORT SLEEVE SHIRT AND PANTS -SIZE (S)	5
2	PEDIATRIC GOWN (OPEN) - SHORT SLEEVE SHIRT AND PANTS -SIZE(M)	5
3	PEDIATRIC GOWN (OPEN) - SHORT SLEEVE SHIRT AND PANTS -SIZE (L)	10
4	PAEDIATRIC GOWN (OPEN) - FULL SLEEVE SHIRT AND PANTS -SIZE (S)	5
5	PAEDIATRIC GOWN (OPEN) - FULL SLEEVE SHIRT AND PANTS -SIZE (M)	5
6	PAEDIATRIC GOWN (OPEN) - FULL SLEEVE SHIRT AND PANTS -SIZE (L)	10
7	PEDIATRIC GOWN (CLOSED) - SHORT SLEEVE SHIRT AND PANTS -SIZE (S)	5
8	PEDIATRIC GOWN (CLOSED) - SHORT SLEEVE SHIRT AND PANTS -SIZE (M)	5
9	PEDIATRIC GOWN (CLOSED) - SHORT SLEEVE SHIRT AND PANTS -SIZE (L)	10
10	PAEDIATRIC GOWN (CLOSED) - FULL SLEEVE SHIRT AND PANTS -SIZE (S)	5
11	PAEDIATRIC GOWN (CLOSED) - FULL SLEEVE SHIRT AND PANTS -SIZE (M)	5
12	PAEDIATRIC GOWN (CLOSED) - FULL SLEEVE SHIRT AND PANTS -SIZE (L)	10
13	ADULT GOWN (OPEN) - SHORT SLEEVE SHIRT AND PANTS -SIZE(M)	10
14	ADULT GOWN (OPEN) - SHORT SLEEVE SHIRT AND PANTS -SIZE(L)	10
15	ADULT GOWN (OPEN) - SHORT SLEEVE SHIRT AND PANTS -SIZE (XL)	10
16	ADULT GOWN (OPEN) - SHORT SLEEVE SHIRT AND PANTS -SIZE (XXL)	5
17	ADULT GOWN (OPEN) - FULL SLEEVE SHIRT AND PANTS -SIZE (M)	10
18	ADULT GOWN (OPEN) - FULL SLEEVE SHIRT AND PANTS -SIZE (L)	10
19	ADULT GOWN (OPEN) - FULL SLEEVE SHIRT AND PANTS -SIZE (XL)	10
20	ADULT GOWN (OPEN) - FULL SLEEVE SHIRT AND PANTS -SIZE (XXL)	5
21	ADULT GOWN (CLOSED) - SHORT SLEEVE SHIRT AND PANTS -SIZE (M)	40
22	ADULT GOWN (CLOSED) - SHORT SLEEVE SHIRT AND PANTS -SIZE (L)	30
23	ADULT GOWN (CLOSED) - SHORT SLEEVE SHIRT AND PANTS -SIZE (XL)	10
24	ADULT GOWN (CLOSED) - SHORT SLEEVE SHIRT AND PANTS -SIZE (XXL)	5
25	ADULT GOWN (CLOSED) - FULL SLEEVE SHIRT AND PANTS -SIZE (M)	40
26	ADULT GOWN (CLOSED) - FULL SLEEVE SHIRT AND PANTS -SIZE (L)	30
27	ADULT GOWN (CLOSED) - FULL SLEEVE SHIRT AND PANTS -SIZE (XL)	10
28	ADULT GOWN (CLOSED) - FULL SLEEVE SHIRT AND PANTS -SIZE (XXL)	5
29	LONG PEDIATRIC GOWN-SHORT SLEEVE -SIZE (S)	10
30	LONG PEDIATRIC GOWN-SHORT SLEEVE -SIZE (M)	10
31	LONG PEDIATRIC GOWN-SHORT SLEEVE -SIZE (L)	10
32	LONG ADULT GOWN-SHORT SLEEVE -SIZE (M)	30
33	LONG ADULT GOWN-SHORT SLEEVE -SIZE (L)	30
34	LONG ADULT GOWN-SHORT SLEEVE -SIZE (XL)	20
35	LONG ADULT GOWN-SHORT SLEEVE -SIZE (XXL)	10



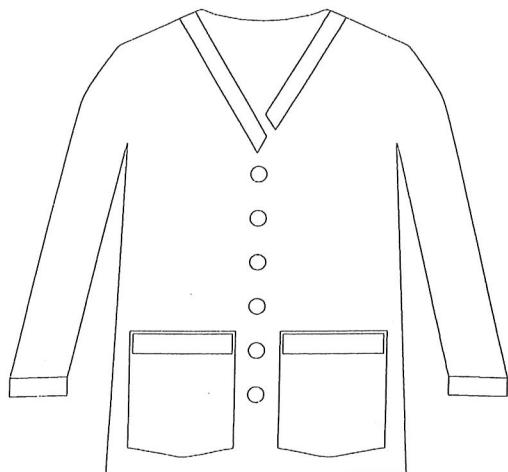
36	PATIENT HEAD SCARF(COTTON STRETCH MATERIAL) -SIZE (S)	40
37	PATIENT HEAD SCARF(COTTON STRETCH MATERIAL) -SIZE (M)	40
38	STAFF SCRUB (SHORT SLEEVE AND FULL SLEEVE)	15



Staff Scrubs

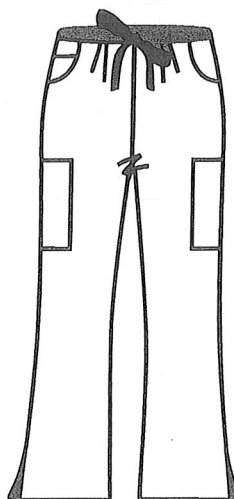
Top

(S, M, L)





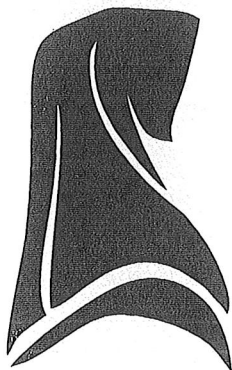
Pants

(S, M, L)



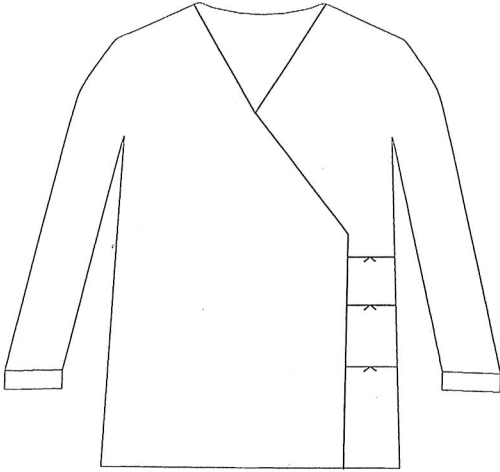
Hijab (S, M)

- Elastic waist for pants.
- Both full sleeve and half sleeve.
- Sky blue.  Navy blue on collar, pockets and hijab 

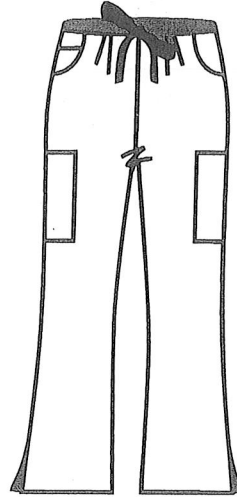


Mammogram / Fluoroscopy

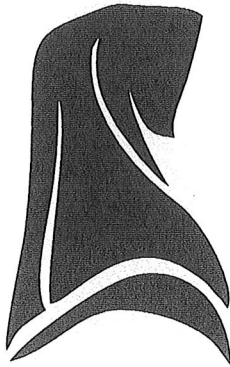
Top



Pants



Hijab (S, M)

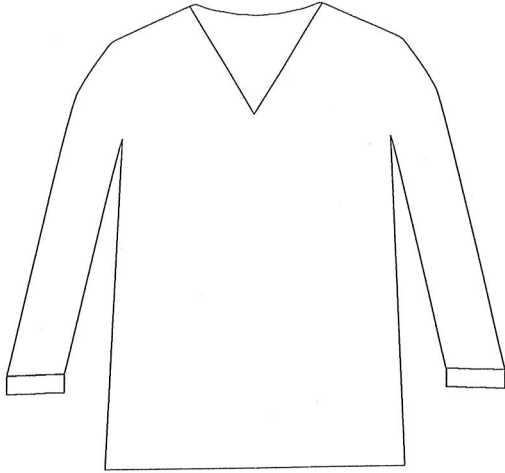


- Sizes – S, M, L.
- Teal color
- Adjustable waist

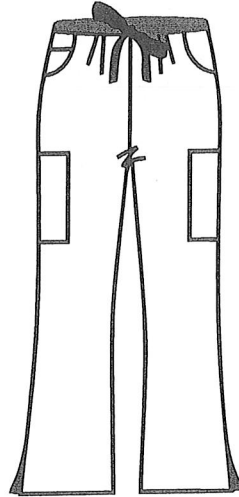


Patient Scrubs (CT/MRI/X-Ray)

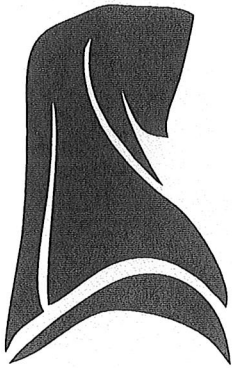
Top



Pants



Hijab (S, M)



- Pediatric - S, M, L.
- Adult -S, M, L.
- Both full sleeve and half sleeve.
- Teal color
- Adjustable waist.

