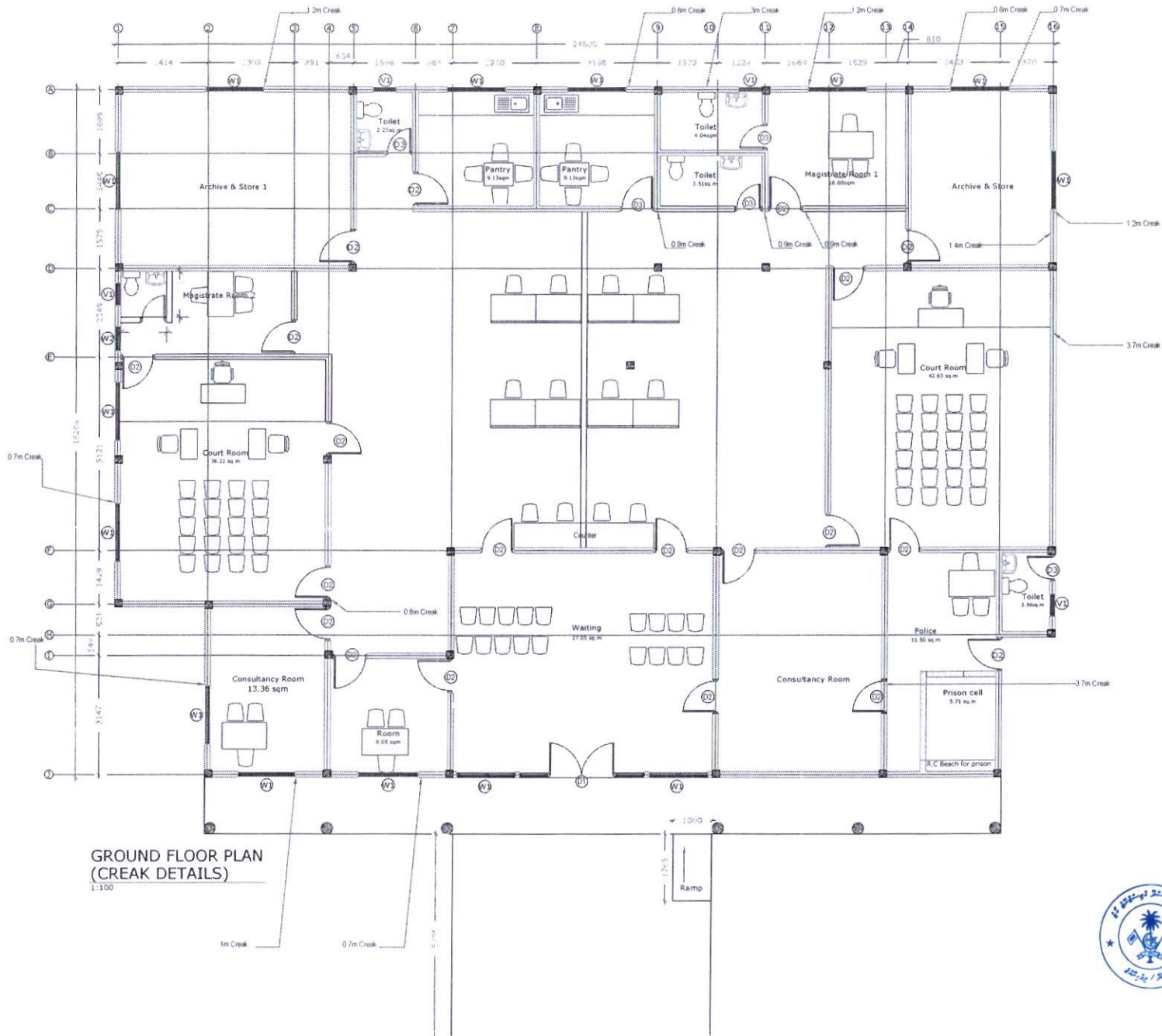
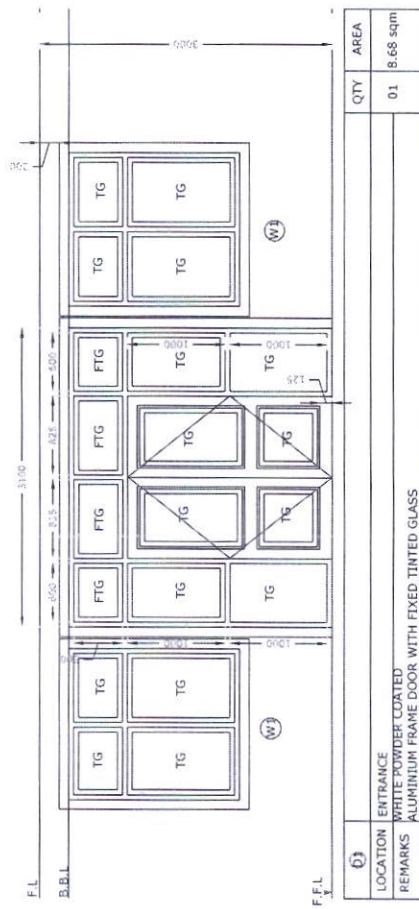
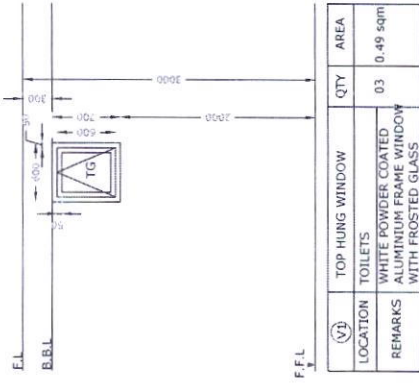


**GROUND FLOOR PLAN**  
3:1100

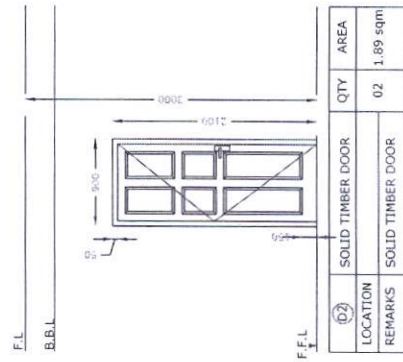




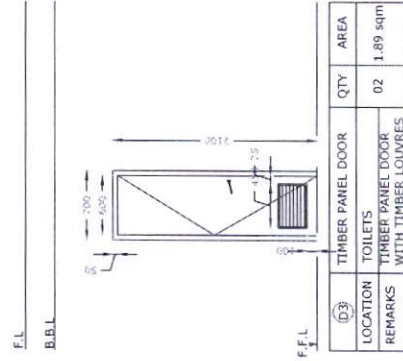
LOCATION	ENTRANCE	QTY	AREA
REMARKS	WHITE POWDER COATED ALUMINIUM FRAME DOOR WITH FIXED TINTED GLASS	01	8.68 sqm



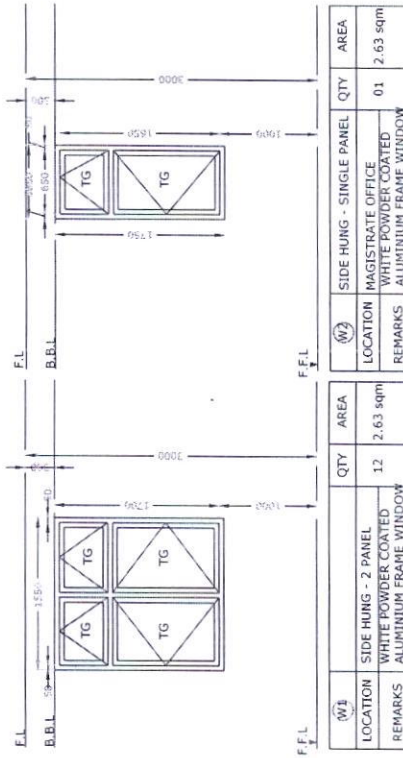
LOCATION	TOILETS	QTY	AREA
REMARKS	WHITE POWDER COATED ALUMINIUM FRAME WINDOW WITH FROSTED GLASS	03	0.49 sqm



LOCATION	SOLID TIMBER DOOR	QTY	AREA
REMARKS	SOLID TIMBER DOOR	02	1.89 sqm



LOCATION	TIMBER PANEL DOOR	QTY	AREA
REMARKS	TOILETS TIMBER PANEL DOOR WITH TIMBER LOUVRES	02	1.89 sqm

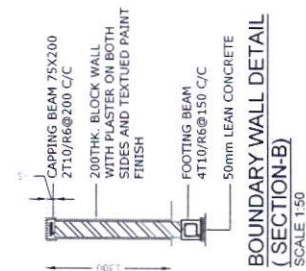
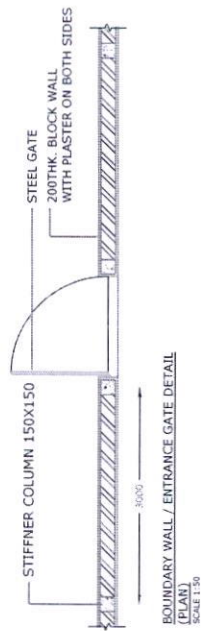
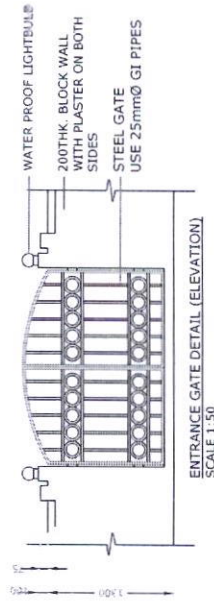
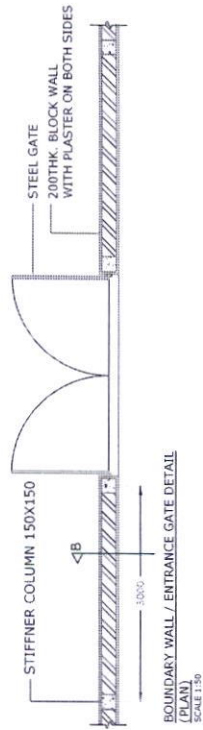


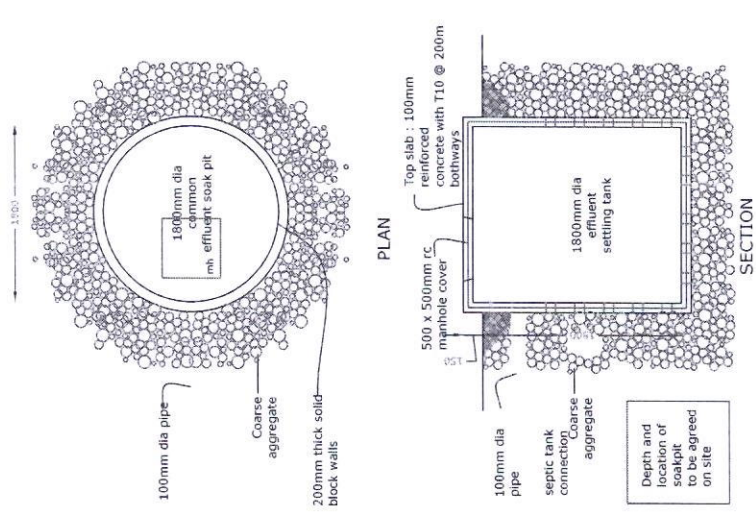
LOCATION	SIDE HUNG - 2 PANEL	QTY	AREA
REMARKS	WHITE POWDER COATED ALUMINIUM FRAME WINDOW WITH TINTED GLASS	12	2.63 sqm

LOCATION	SIDE HUNG - SINGLE PANEL	QTY	AREA
REMARKS	MAGISTRATE OFFICE WHITE POWDER COATED ALUMINIUM FRAME WINDOW WITH TINTED GLASS	01	2.63 sqm

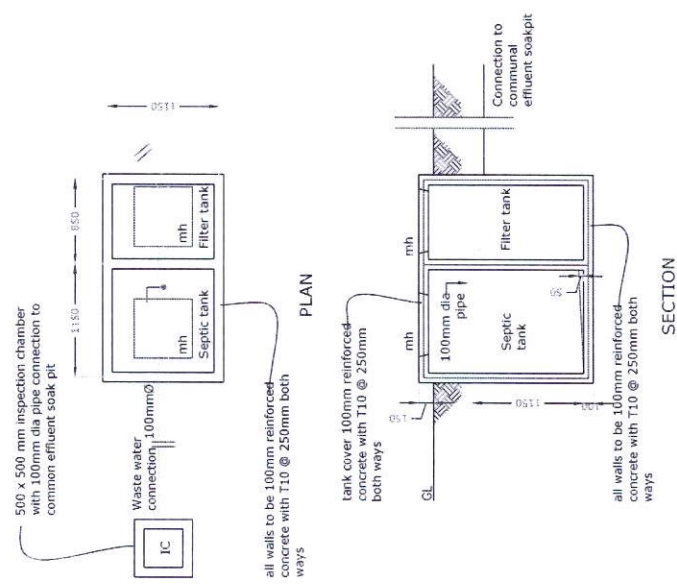
DOOR & WINDOW SCHEDULE  
1:50





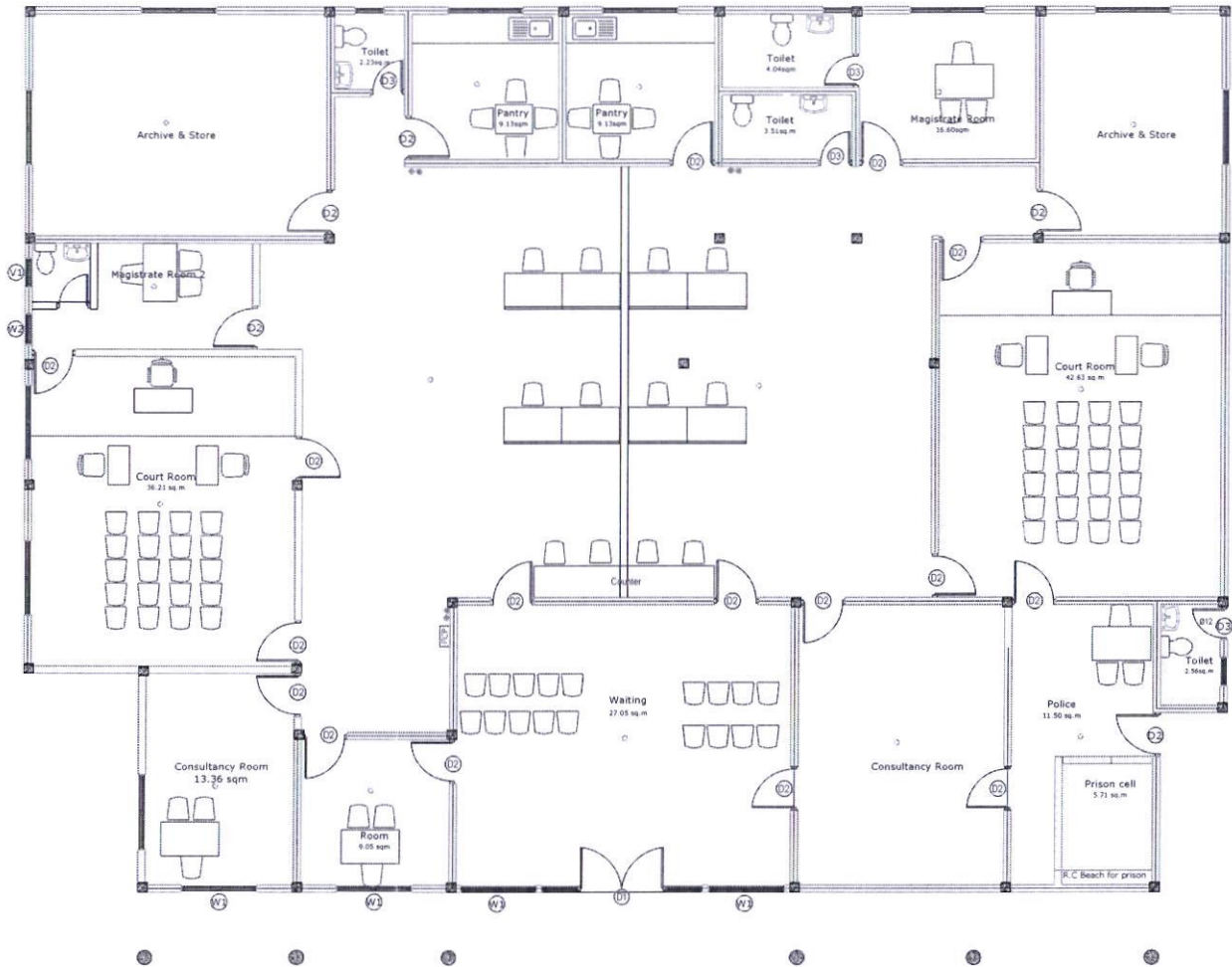


COMMUNAL SOAK PIT DETAIL  
1:50



SEPTIC TANK DETAIL  
1:50





- NOTE**
- SMOKE ALARM 5 NOS
  - ◆ FOUR LITER H2O FIRE EXTINGUISHER
  - ◆ TWO LITER CO2 FIRE EXTINGUISHER
  - FIRE SERVICE CONTROL PANEL

**GROUND FLOOR FIRE FIGHTING SYSTEM**  
SCALE 1:100

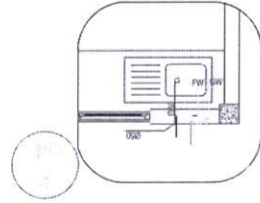
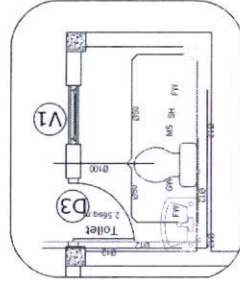
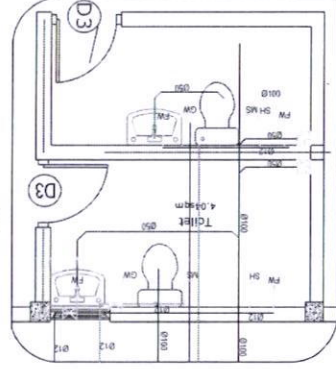
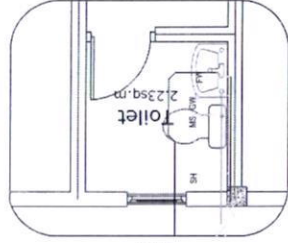




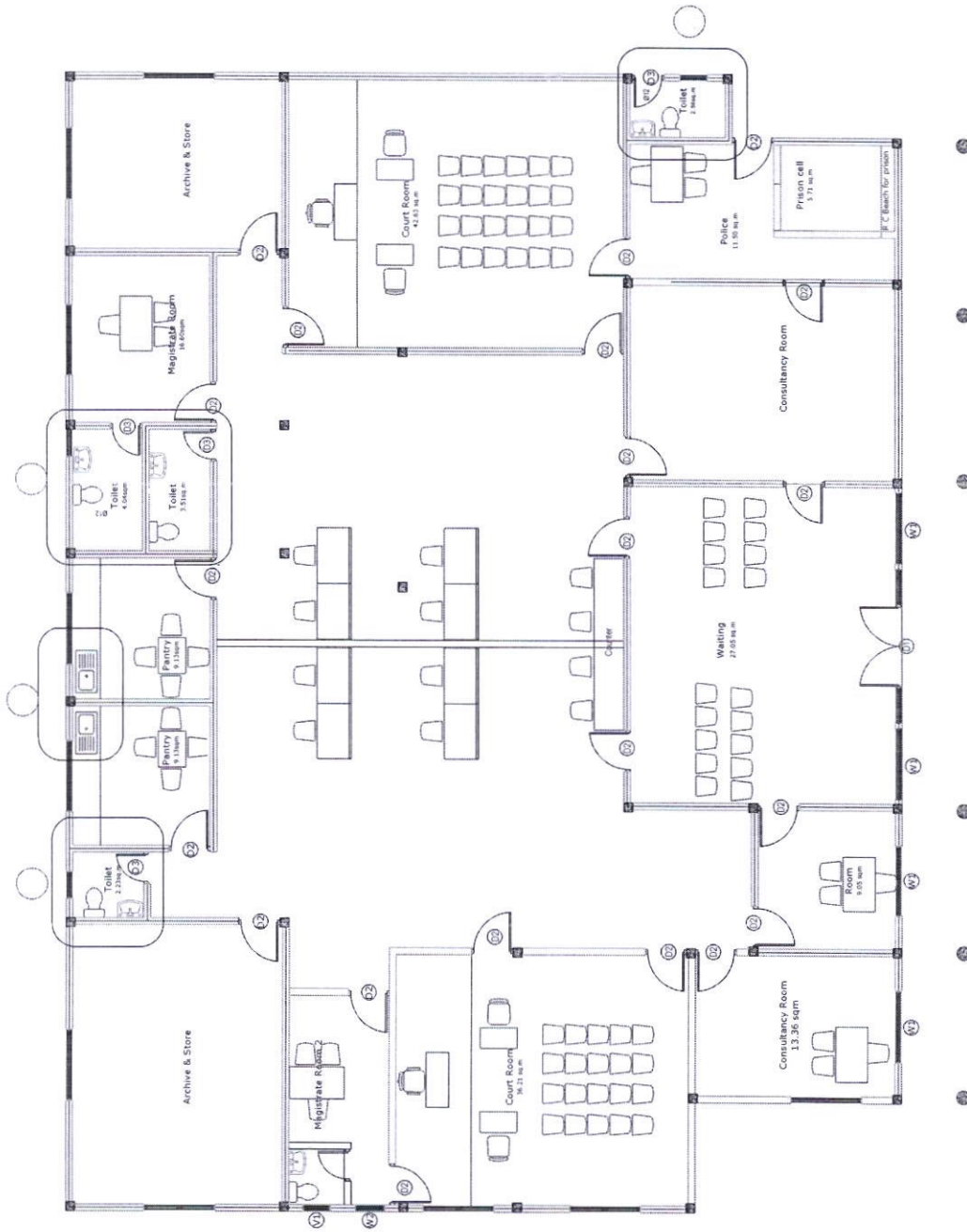
# PLUMBING DETAILS

1:50

- SYMBOLS LEGEND (PLUMBING)**
- \_\_\_\_\_ Soliwwaste pipe
  - \_\_\_\_\_ Sonmnd Waste pipe
  - \_\_\_\_\_ Sonmnd Vent pipe
  - \_\_\_\_\_ Fresh water pipe
  - \_\_\_\_\_ Ground well water pipe
  - Step Gate valve
  - Non Return Valve
  - Hand Shower
  - M.W.S.C. Water Meter
  - Grease Trap
  - Inspection Chamber
  - MWSC Inspection chamber
  - Rain water catch Basin
  - Floor Drain with water Trap
  - Floor clean out
  - Roof Drain with strainer
  - Wash Basin
  - Kitchen Sink
  - Water Closet
  - Shower
  - Rainwater Downpipe
  - Ground water Tap
  - Fresh water Tap
  - Ground water pump (Electric)
  - Ground water pump (Duplicable)

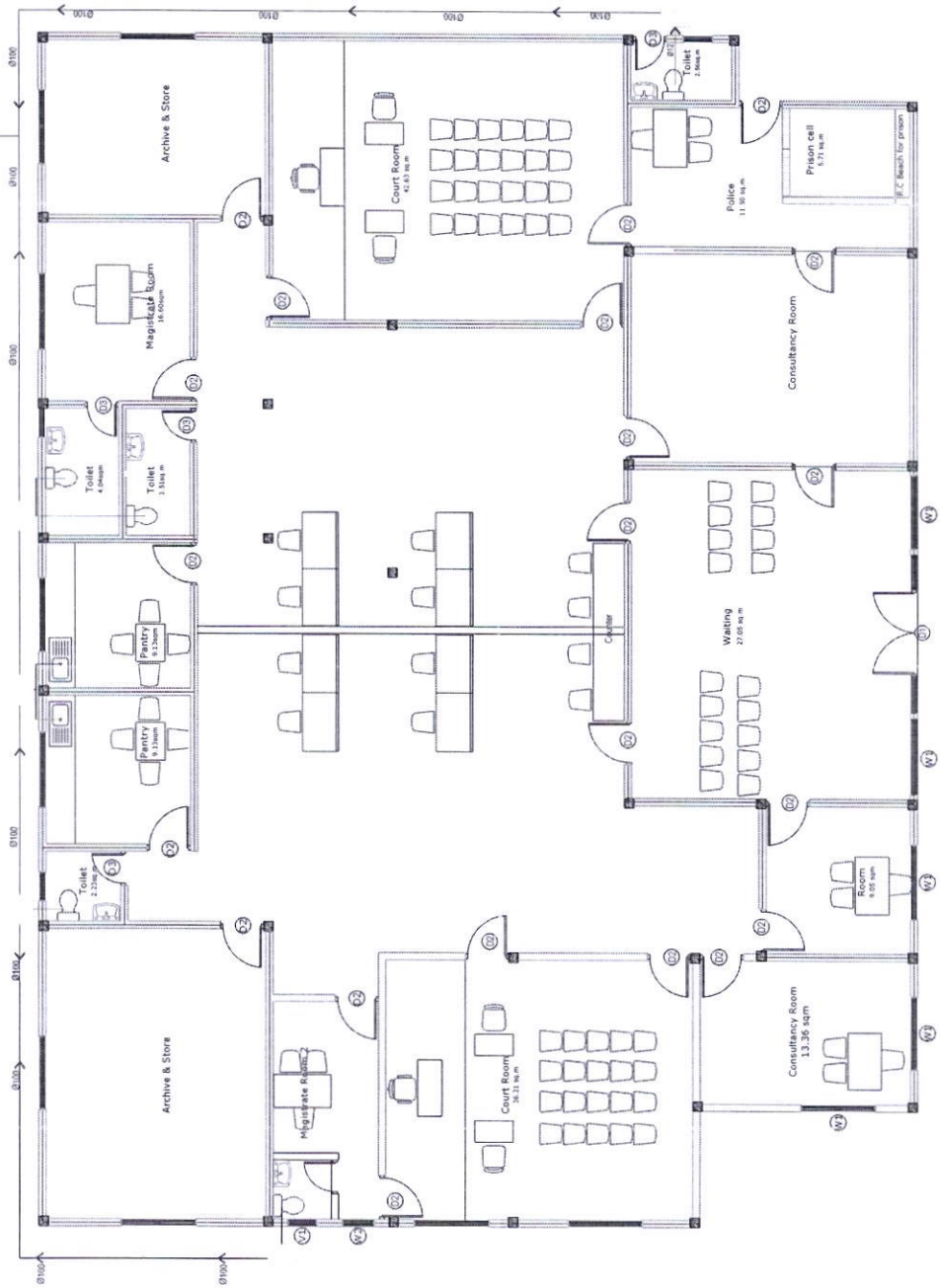


Vertical line extending from the logo to the bottom of the page.

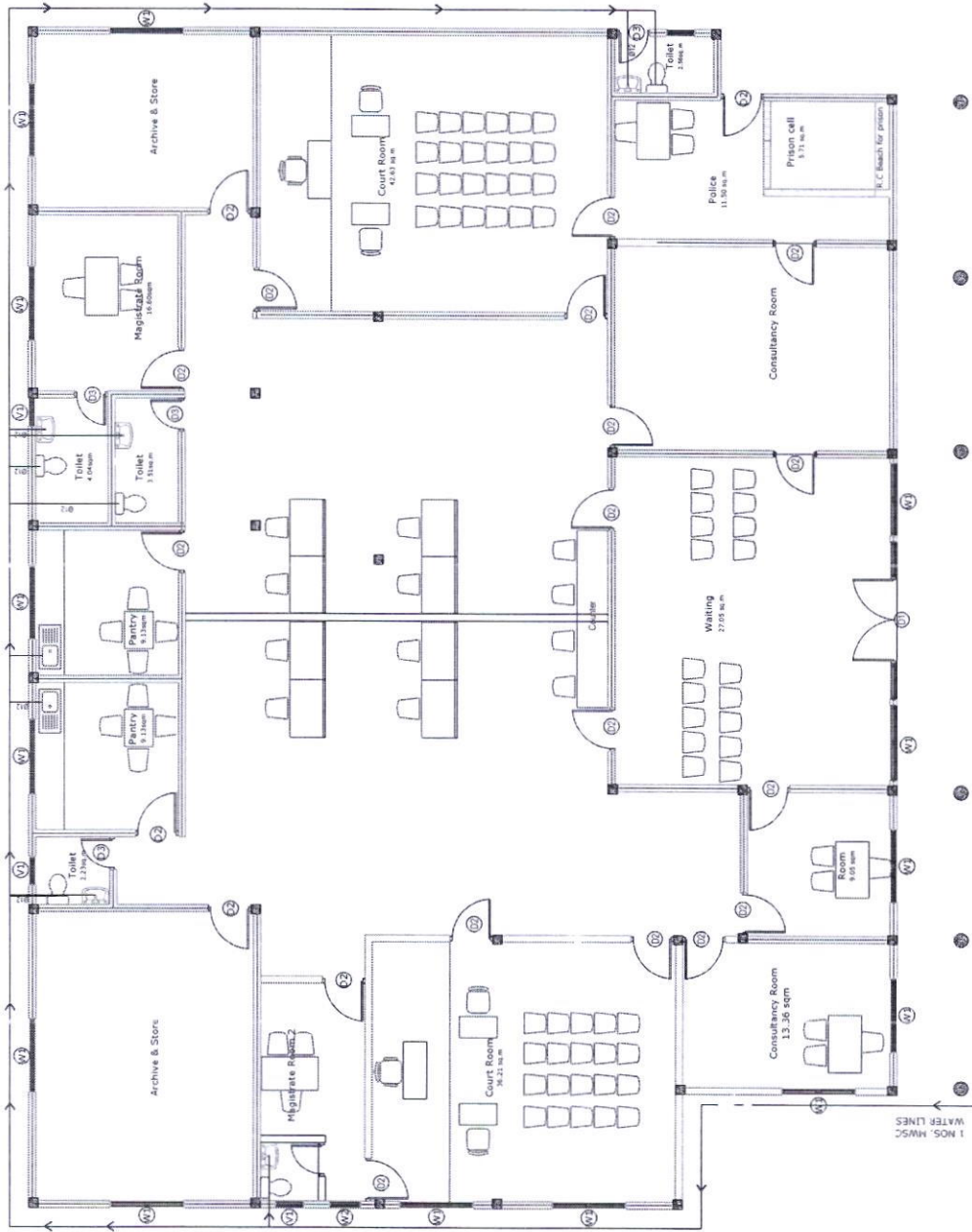


PLUMBING LAYOUT  
1:100

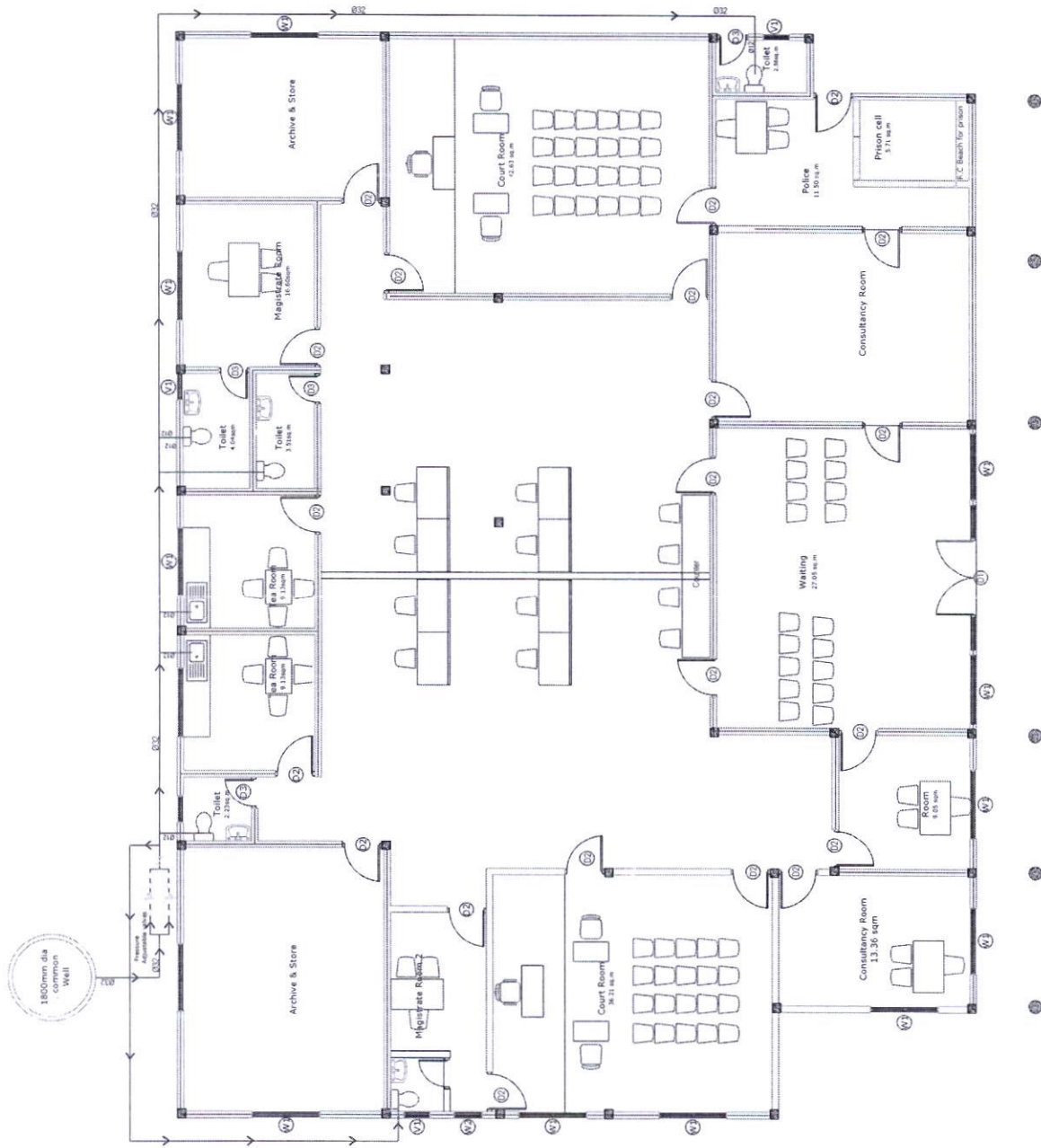




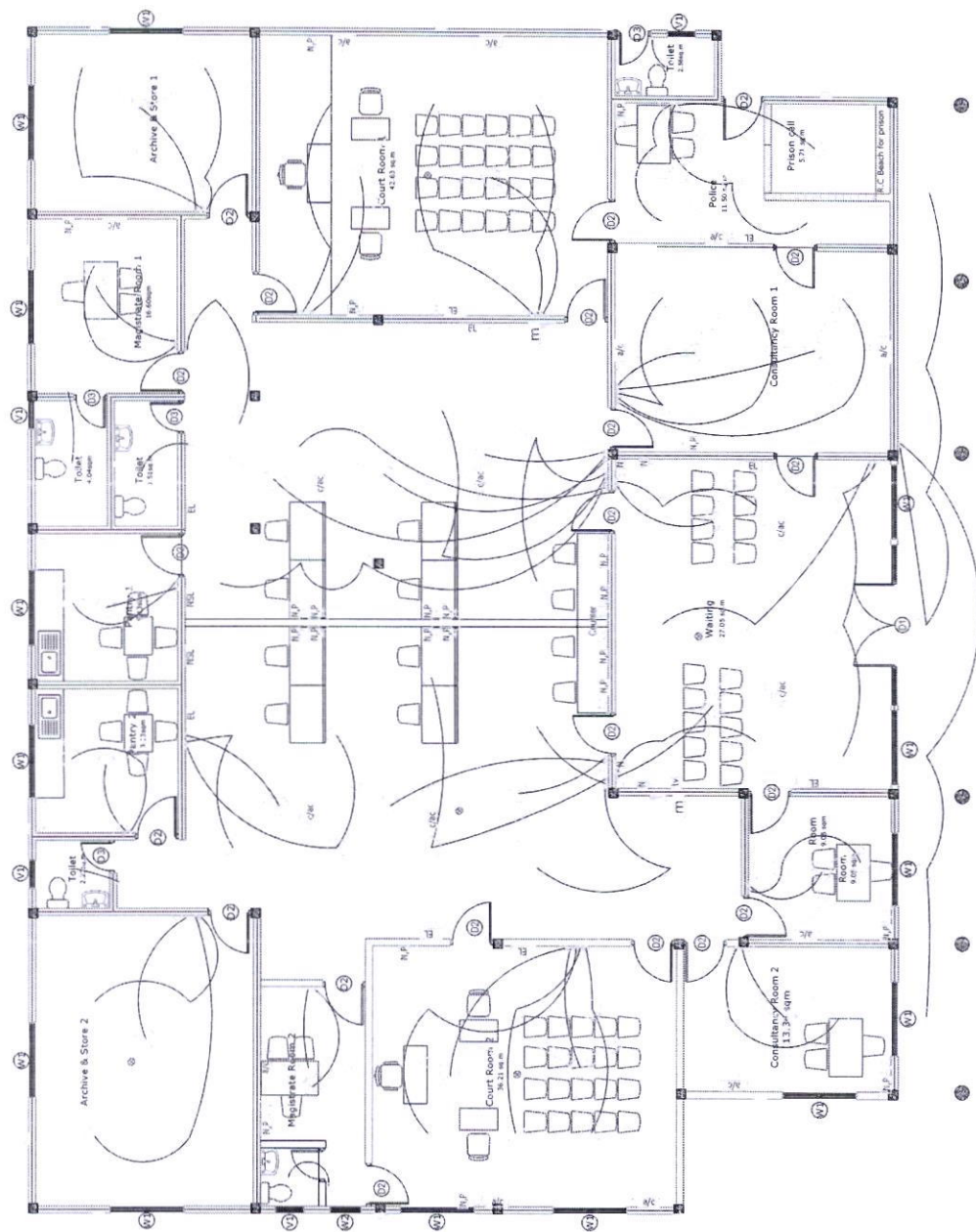
MAIN SEWAGE AND SOIL WASTE DISPOSAL LAYOUT  
1:100



MAIN M.W.S.C. (FRESH WATER) SUPPLY LAYOUT  
1:100



MAIN GROUND WATER SUPPLY LAYOUT  
1:100



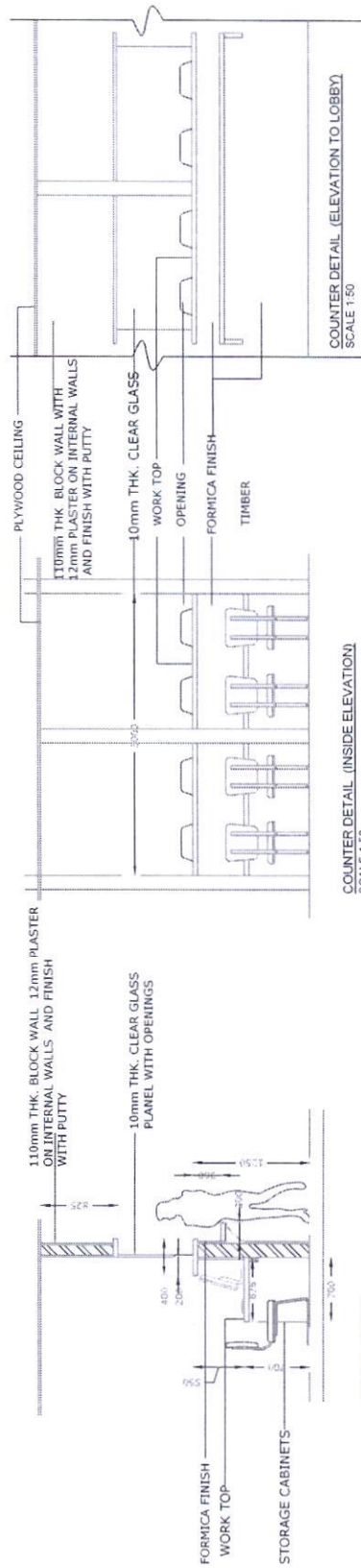
**LEGEND**

- Fan
- Circular LED light single 4"
- Socket 2x13A
- Socket 13A
- Socket 15A
- Fan Dimmer Switch
- Switch one way
- Switch two way
- D-Board
- Main Board
- Emergency light (2Hrs)
- Wall mount water proof light
- CEILING RECESSED LIGHT
- WALL MOUNT AIR CONDITION
- CALLING MOUNT AIR CONDITION
- NETWORK & TELEPHONE
- CABLE TV POINT
- NETWORK SWITCH LOCATION

**Note:**  
 - All sockets for A/C and emergency lights at 300mm below the ceiling level and the rest at 400mm above floor level switches at the height at 1300mm  
 - Wall Mount lights at 300 below ceiling level

**EXTERIOR LIGHT SWITCHES**(front and separate from the rest)

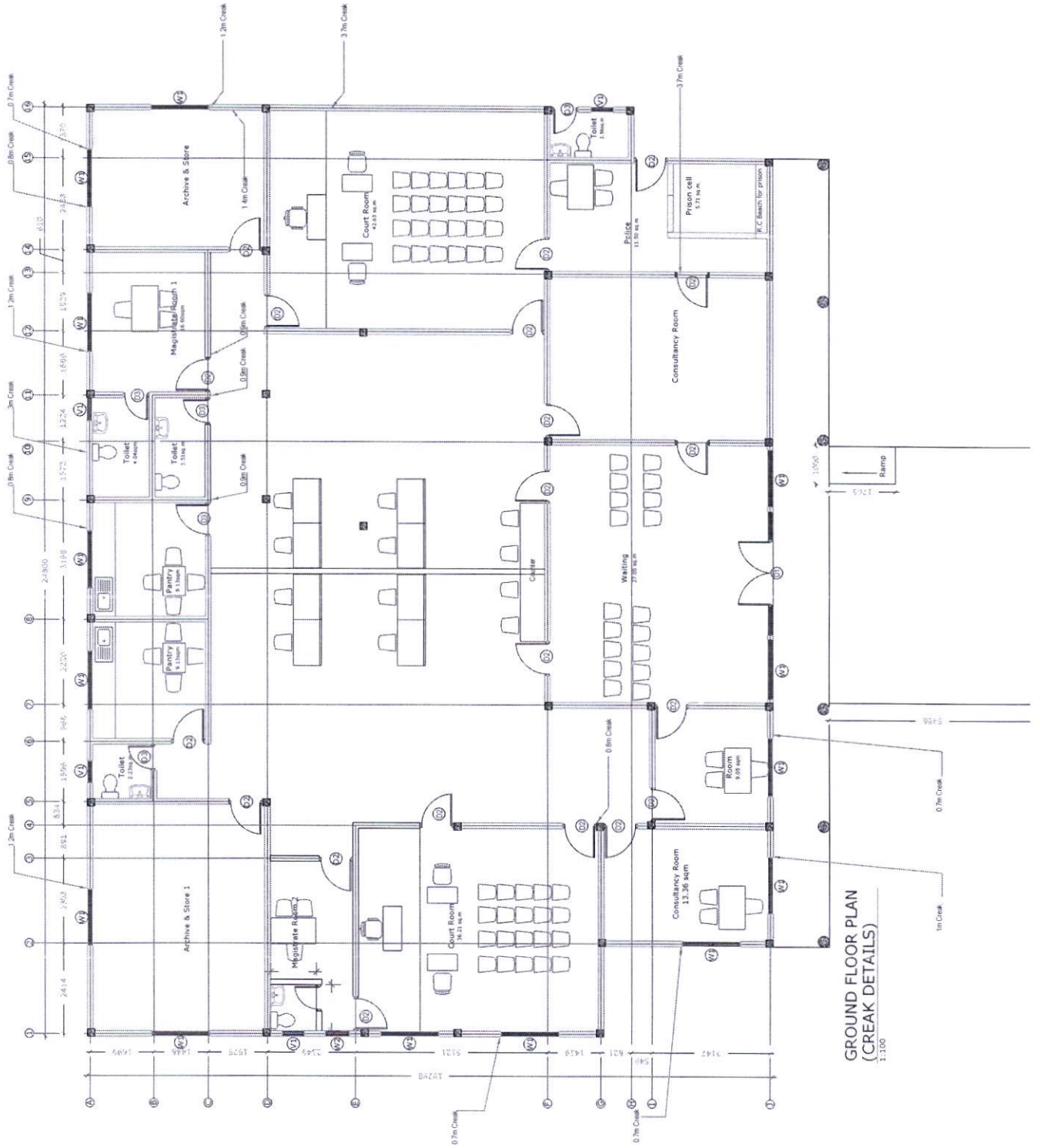
**SCHEMATIC ELECTRICAL LAYOUT**  
 1:100



COUNTER DETAIL  
(SECTION)  
SCALE 1:50

COUNTER DETAIL (INSIDE ELEVATION)  
SCALE 1:50

COUNTER DETAIL (ELEVATION TO LOBBY)  
SCALE 1:50



GROUND FLOOR PLAN  
(CREEK DETAILS)  
1:300